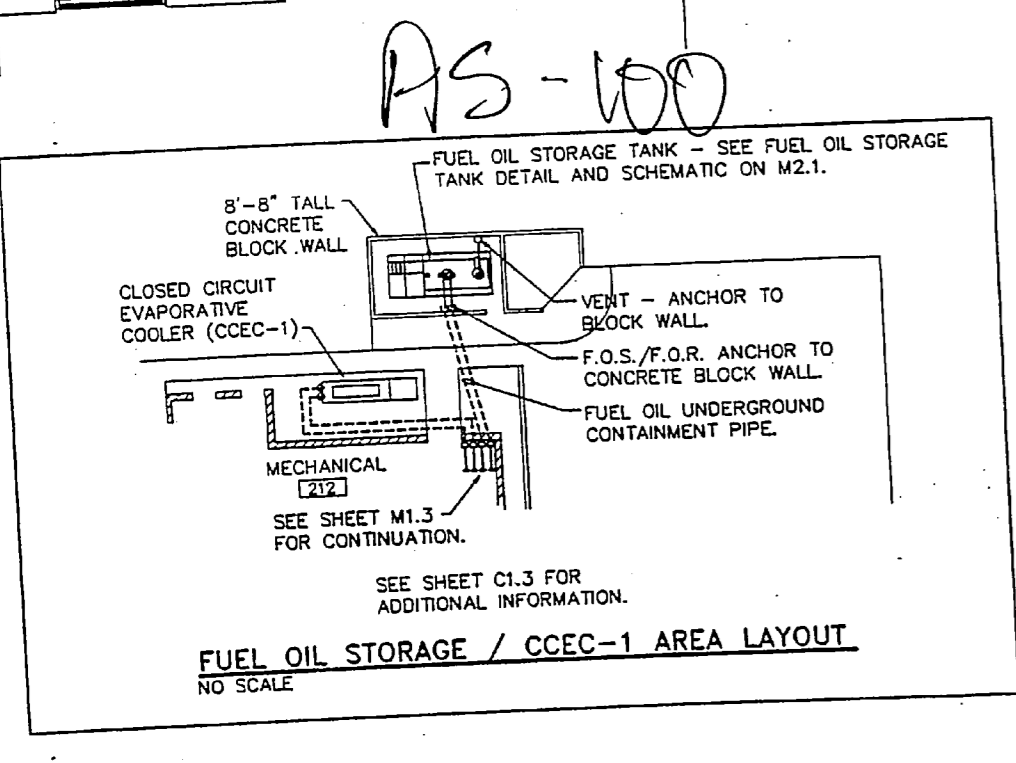


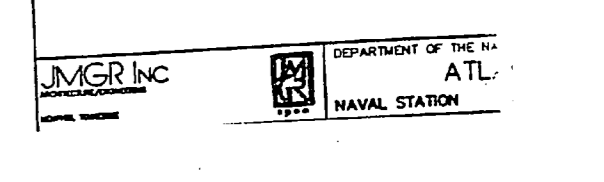
AS-100

FLOOR PLAN D: MECHANICAL

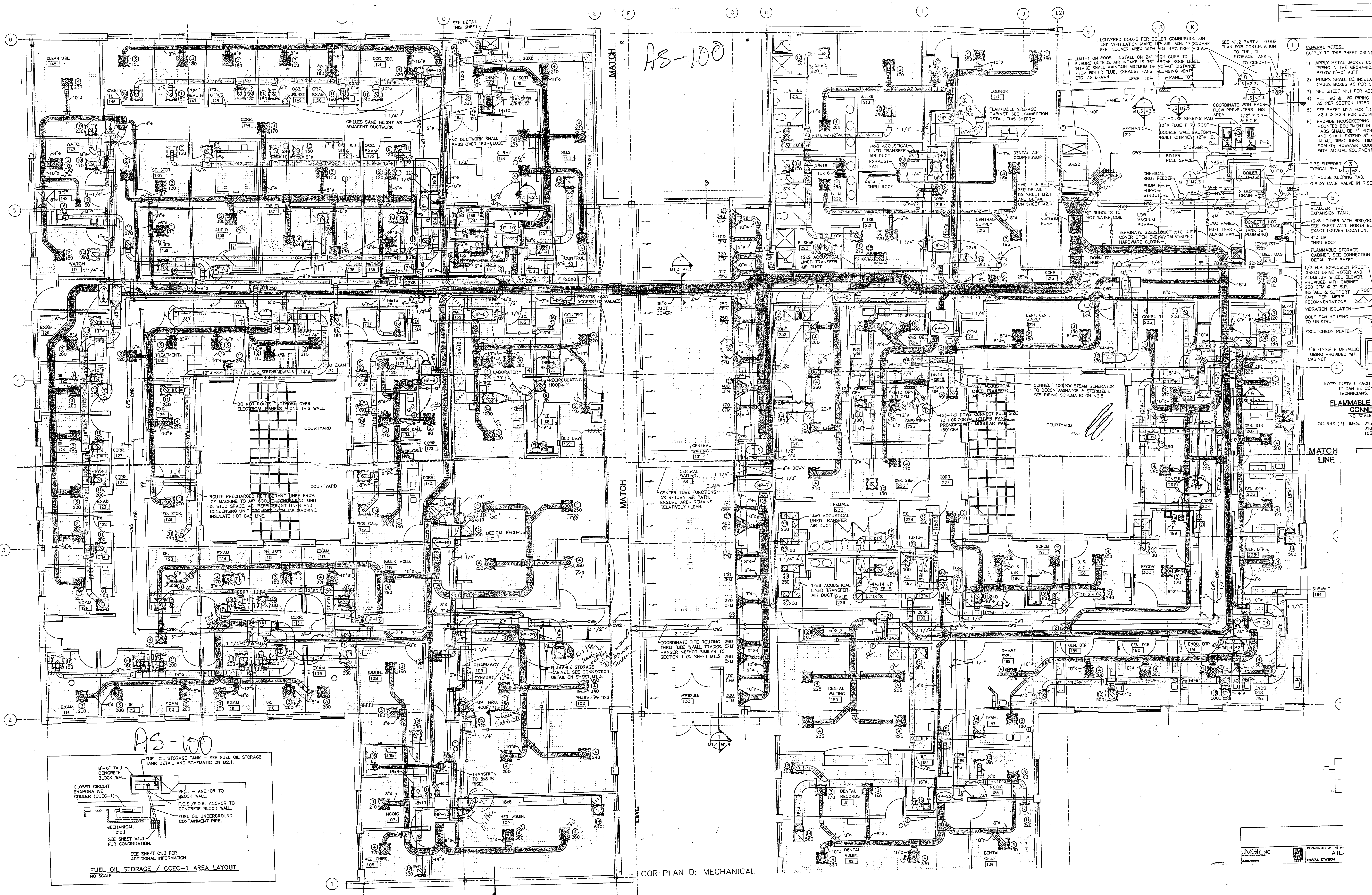


FLOOR PLAN B: MECHANICAL

- GENERAL NOTES:** (APPLY TO THIS SHEET ONLY)
- 1) APPLY METAL JACKET CO-PIPE IN THE MECHANICAL AREAS AS PER SECTION 15230
  - 2) SEE SHEET M1.1 FOR ADDITIONAL EQUIPMENT
  - 3) SEE SHEET M1.2 FOR ADDITIONAL EQUIPMENT
  - 4) ALL WIRE & CABLE SHALL BE AS PER SECTION 15230
  - 5) PROVIDE HOUSEKEEPING PADS FOR ALL EQUIPMENT. PADS SHALL BE 4" HIGH AND SHALL EXTEND 6" IN ALL DIRECTIONS. DMC SHALL PROVIDE HOUSEKEEPING PADS WITH ACTUAL EQUIPMENT.
  - 6) PROVIDE HOUSEKEEPING PADS FOR ALL EQUIPMENT. PADS SHALL BE 4" HIGH AND SHALL EXTEND 6" IN ALL DIRECTIONS. DMC SHALL PROVIDE HOUSEKEEPING PADS WITH ACTUAL EQUIPMENT.
  - 7) PROVIDE HOUSEKEEPING PADS FOR ALL EQUIPMENT. PADS SHALL BE 4" HIGH AND SHALL EXTEND 6" IN ALL DIRECTIONS. DMC SHALL PROVIDE HOUSEKEEPING PADS WITH ACTUAL EQUIPMENT.
  - 8) PROVIDE HOUSEKEEPING PADS FOR ALL EQUIPMENT. PADS SHALL BE 4" HIGH AND SHALL EXTEND 6" IN ALL DIRECTIONS. DMC SHALL PROVIDE HOUSEKEEPING PADS WITH ACTUAL EQUIPMENT.
  - 9) PROVIDE HOUSEKEEPING PADS FOR ALL EQUIPMENT. PADS SHALL BE 4" HIGH AND SHALL EXTEND 6" IN ALL DIRECTIONS. DMC SHALL PROVIDE HOUSEKEEPING PADS WITH ACTUAL EQUIPMENT.
  - 10) PROVIDE HOUSEKEEPING PADS FOR ALL EQUIPMENT. PADS SHALL BE 4" HIGH AND SHALL EXTEND 6" IN ALL DIRECTIONS. DMC SHALL PROVIDE HOUSEKEEPING PADS WITH ACTUAL EQUIPMENT.
- FLAMMABLE CONNECTIONS:**  
CONNECTIONS TO BE MADE TO THE FOLLOWING EQUIPMENT:  
1. 1/2" H.P. EXPLOSION PROOF DIRECT DRIVE MOTOR AND ALUMINUM WHEEL BLOWER.  
2. 250 CFM @ 3" S.P. FAN PER MFR'S RECOMMENDATIONS.  
3. 3" FLEXIBLE METALLIC TUBING PROVIDED WITH CABINET.
- NOTE:** INSTALL EACH F.F. IT CAN BE CONVEYED.
- CONNECTIONS:**  
CONNECTIONS TO BE MADE TO THE FOLLOWING EQUIPMENT:  
1. 1/2" H.P. EXPLOSION PROOF DIRECT DRIVE MOTOR AND ALUMINUM WHEEL BLOWER.  
2. 250 CFM @ 3" S.P. FAN PER MFR'S RECOMMENDATIONS.  
3. 3" FLEXIBLE METALLIC TUBING PROVIDED WITH CABINET.
- DOORS:** (3) TIMES 215 C. 103.7







FLOOR PLAN B: MECHANICAL



