



UNITED STATES MARINE CORPS
2d Force Service Support Group (Rein)
Fleet Marine Force, Atlantic
Camp Lejeune, North Carolina 28542-5701

IN REPLY REFER TO:

11000

42

5 Aug 1985

FIRST ENDORSEMENT on CO, 2d MaintBn ltr 11000 4/N/R of 2 Aug 1985

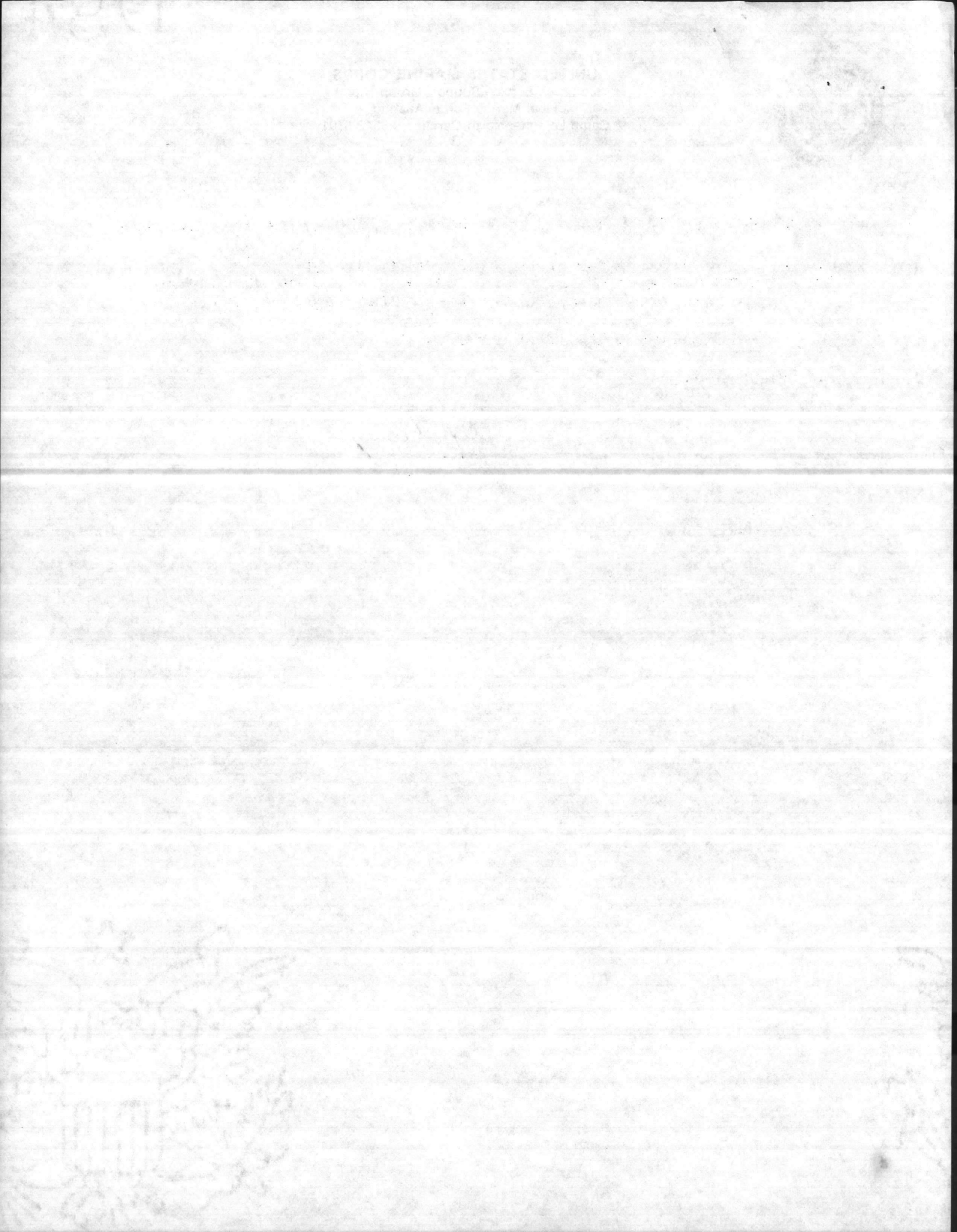
From: Commanding General, 2d Force Service Support Group (REIN)
To: Commanding General, Marine Corps Base, Camp Lejeune NC
(Attn: Mr. Brant, Public Works Planning Section)

Subj: INFORMATION CONCERNING PROJECT P-257

1. Forwarded.

D. A. Cerveny
D. A. CERVENY
By direction

Copy to:
CO, 2d MaintBn





UNITED STATES MARINE CORPS
2d Maintenance Battalion
2d Force Service Support Group (Rein)
Fleet Marine Force, Atlantic
Camp Lejeune, North Carolina 28542-5704

IN REPLY REFER TO:

11000
4/N/R
2 Aug 85

From: Commanding Officer, 2d Maintenance Battalion
To: Commanding General, Marine Corps Base, Camp Lejeune (Attn: AC/S Fac/OIC PW)
Via: Commanding General, 2d Force Service Support Group (Attn: AC/S CSS, Engr Spt/Fac)

Subj: PLANNING INFORMATION FOR NEW IMA INSPECTION STATION
(P-257)

Ref: (a) Phoncon btwn Mr. Dale Lee, Proj Mgr, Olson Assoc, and 1stLt NAZAROFF, Logistics Officer, 2d Maint Bn of 24 Jun 85

Encl: (1) Vehicle Dimensions/Weights of representative Motor Transport and Engineer Wheeled Vehicles.
(2) Vehicle Dimensions of representative Ordnance and Engineer tracked Vehicles
(3) Overlay for P-257

1. As requested during the reference, a thorough review of the planned inspection station (P-257) was conducted.

2. Enclosures (1) and (2) depict the dimensions/weights of the various vehicles the inspection station is planned to accommodate. In addition, the following comments apply to the subject plan.

a. Stalls A and C should be designed (both width and height) to accommodate the complete range of vehicles listed in enclosure (1). We recommend the pits be forty inches wide. Pit A should be twenty-five feet long. Pit C should be twenty feet long.

b. Stall D should be designed (both width and height) to accommodate the range of vehicles listed in enclosure (2). We recommend the pit be fifty inches wide and twenty-five feet long.

3. Enclosure (3) provides an overlay depicting our proposed layout recommendations. In addition, we identified the following design requirements:

a. No lifts will be needed. The availability of three pits as noted, would satisfy our requirements. The pits should be equipped with the following:

(1) Six electrical outlets per pit (three on each side).

Subj: ' PLANNING INFORMATION FOR NEW IMA INSPECTION STATION (P-257

(2) Four compressed air outlets, with hoses, per pit for air and power tools.

(3) Recessed lighting in pit walls for good visibility in the pits and under the vehicles

(4) Drains leading to an oil separator at the bottom of each pit.

(5) Recesses to support planks for use as a flat surface.

b. Each of the bays surrounding the pits should be equipped with:

(1) Two deep sinks with hot and cold water per bay, one each on opposing walls.

(2) Mercury vapor lights for general lighting.

(3) Overhead quartz radiant infrared heaters to provide heat in bays which require constant opening and high ventilation.

(4) Two eye wash stations per bay, one each on opposing walls.

(5) Four overhead electrical drop cords per pit.

(6) Exhaust tubes and ventilation for the range of anticipated vehicles are required in stalls A, B, C, and D. Stall D should be equipped with sufficient ventilation to dissipate exhaust fumes as hot as 1,200 degrees Fahrenheit produced by the M-1 Tank.

(7) Four 110 Volt, 60 cycle outlets per wall in each bay.

c. The administrative/support spaces should be modified and equipped as follows:

(1) Lavatories with industrial-type hand wash sinks and one shower stall in each head (male and female). For planning purposes approximately 15 Marines will be working in the facility. Of this number, 3 are anticipated to be female.

(2) Foot-operated faucets for sinks in the lavatories.

(3) Good general outdoor/security lighting in areas surrounding the inspection station.

(4) No vending area and no independent deep sink area except as noted above.

(5) Full view windows on each side of the administrative offices for visual control of maintenance functions in bays.

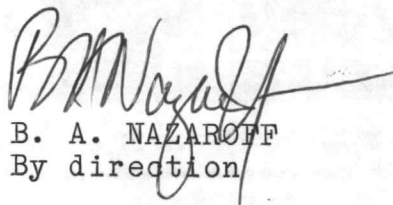
SUBJ: PLANNING INFORMATION FOR NEW IMA INSPECTION STATION (P-257)

- (6) Two outdoor 110 volt 60 cycle outlets on each wall.
- (7) Six 110 volt, 60 cycle outlets in the office spaces.
- (8) Two 110 volt, 60 cycle outlets per lavatory.
- (9) Four telephone hook-ups in administrative spaces.

d. The wash rack area adjacent to the inspection station should be able to accommodate the same range/types of vehicles as the inspection station bays. In addition, the following should be incorporated:

- (1) Steam/hot water for cleaning vehicles.
- (2) Drains to an oil separator.
- (3) Lubrication outlets with 30 and 90 weight oil pumps and lubrication grease dispensers.
- (4) Good general outdoor/security lighting.

4. If you have any questions, please call First Lieutenant Nazaroff at 451-5222 or 3989.


B. A. NAZAROFF
By direction

Copy to:
All company commanders
OIC, PW (Attn Mr. Jones)

UNITED STATES DEPARTMENT OF JUSTICE
FEDERAL BUREAU OF INVESTIGATION

MEMORANDUM FOR THE DIRECTOR

DATE: 10/15/54

TO: SAC, NEW YORK

FROM: SAC, NEW YORK

RE: [Illegible]

[Illegible]

[Illegible]

[Illegible]

[Illegible]

[Illegible]

[Illegible]

[Illegible]

[Illegible]

VEHICLE DIMENSION MOTOR TRANSPORT/ENGINEER WHEELED VEHICLES

TAMCN	NOMEN	INTERNAL/ EXTERNAL DISTANCE BETWEEN FRONT WHEEL	INTERNAL/ EXTERNAL DISTANCE BETWEEN REAR WHEEL	DISTANCE BETWEEN FRONT AND REAR WHEELS	WT (LB)	HT (MAX)	L (MAX)
MOTOR TRANSPORT WHEELED VEHICLES							
D1061	M814	62"/86"	46"/98"	206"	21,479	116"	304"
D1140	M123AIC	63"/99.5"	48.5"/114"	211.5"	30,230	112"	288.8"
D1190	M109A3	58"/79"	47"/93"	178"	15,881	130"	263"
D0918	M1010	58.6"/83"	56.6"/86"	131.5"	5,900	99"	220.7"
D1215	M816	62"/86"	46"/98"	206"	36,129	106"	356"
D1180	M997	85"/85"	85"/85"	130"	5,000	72"	180"
D1020	M561	72"/72"	72"/72"	161"	10,200	98.8"	226.6"
D1160	M151A2	46"/62"	46"/64.3"	85"	2,400	71"	132.7"
D1064	A/S32P- 19A	61"/98"	59"/96"	170"	24,260	120"	325"
D0209	MK 48/15	61"/98"	62"/96"	259"	50,550	102"	444"
ENGINEER WHEELED VEHICLES							
B0399	MC2500	66"/116"	66"/116"	146"	71,470	12'8"	529"
B2565	MC4000	49"/81"	49"/81"	94"	8,000	85.7"	198.5"
B2465	MC10000	60"/101"	60"/101"	102"	34,600	139"	213.5"

Enclosure (1)

VEHICLE DIMENSIONS ORDNANCE/ENGINEER TRACKED VEHICLES

TAMCN	NOMEN	INTERNAL/ EXTERNAL DISTANCE BETWEEN TRACKS	INTERNAL/ EXTERNAL DISTANCE BETWEEN TRACKS	DISTANCE BETWEEN FRONT AND REAR WHEELS	WT (LB)	HT (MAX)	L (MAX)
ORDNANCE TRACKED VEHICLES							
E0663	M109A3	88"/124"	SAME	TRACKS	43,500	120.43"	356"
E0845	LVTP7A1	86.7"/128.72"	SAME	TRACKS	49,800	128.5"	312.75
E0692	M110A2	88"/124"	SAME	TRACKS	55,600	115"	294"
E1377	M88A1	7'3"/11'3"	SAME	TRACKS	105,000	10'3"	27'1 1/2"
E1855	M60A1	87"/143"	SAME	TRACKS	97,000	128.2"	273.5"
	M1 TANK	88"/136"	SAME	TRACKS	120,000	113.6"	354.2"

ENGINEER TRACKED VEHICLES

B2462	D7G	54 1/2"/103"	54 1/2"/103"	TRACKS	44,350	129.1"	208"
B2468	MRS-1-100	98"/131"	98"/131"	125" F&R 265" REAR AXLE TRACTOR REAR AXLE SCRAPER	65,400	147"	131"

Enclosure (2)

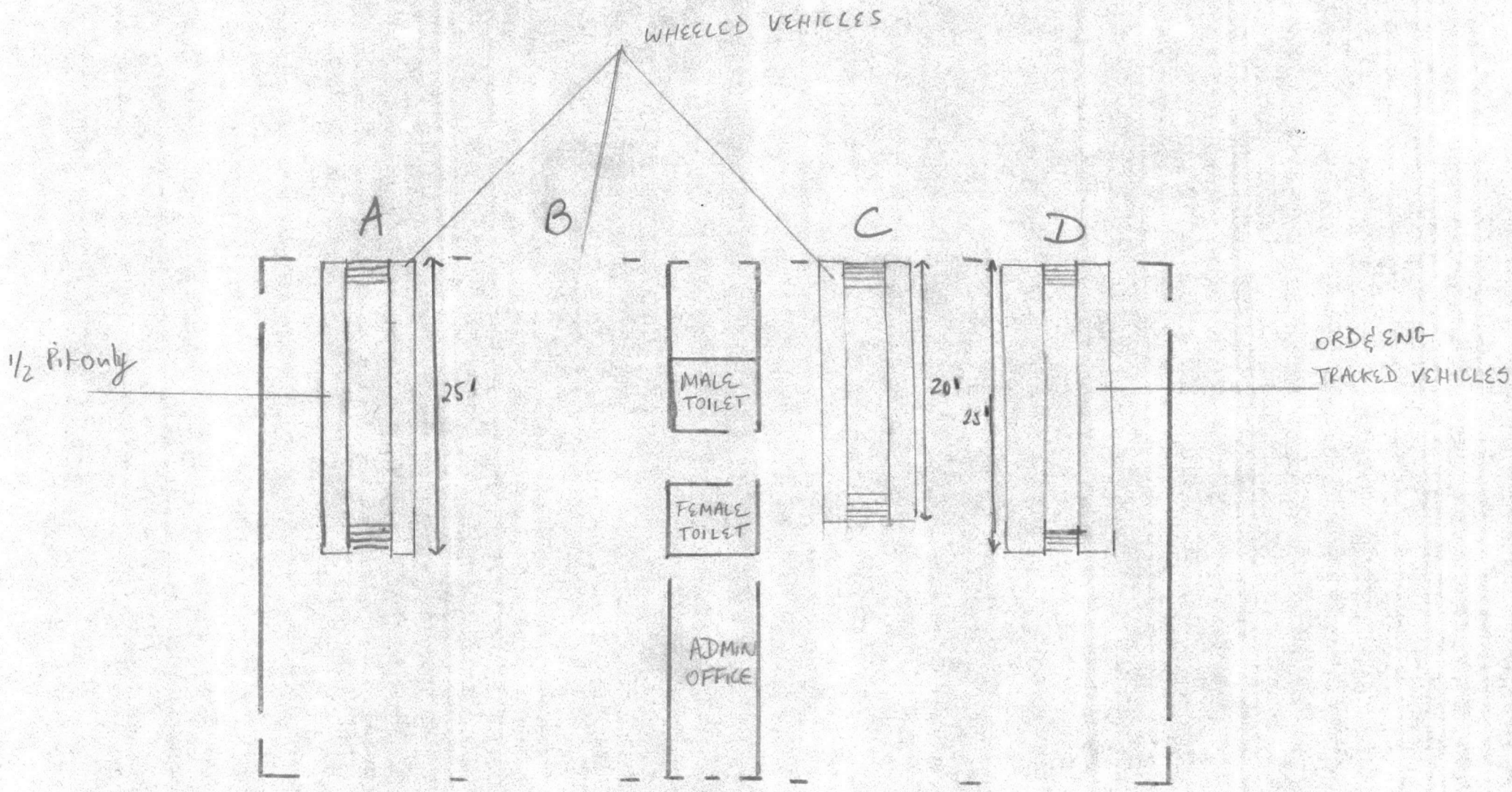
DATE	AMOUNT	DESCRIPTION	ACCOUNT	CLASS	STATUS
1911	100.00
1912	200.00
1913	300.00
1914	400.00
1915	500.00
1916	600.00
1917	700.00
1918	800.00
1919	900.00
1920	1000.00

UNITED STATES DEPARTMENT OF AGRICULTURE

DATE	AMOUNT	DESCRIPTION	ACCOUNT	CLASS	STATUS
1921	1100.00
1922	1200.00
1923	1300.00
1924	1400.00
1925	1500.00
1926	1600.00
1927	1700.00
1928	1800.00
1929	1900.00
1930	2000.00

UNITED STATES DEPARTMENT OF AGRICULTURE

UNITED STATES DEPARTMENT OF AGRICULTURE
 OFFICE OF THE ASSISTANT SECRETARY
 WASHINGTON, D. C.

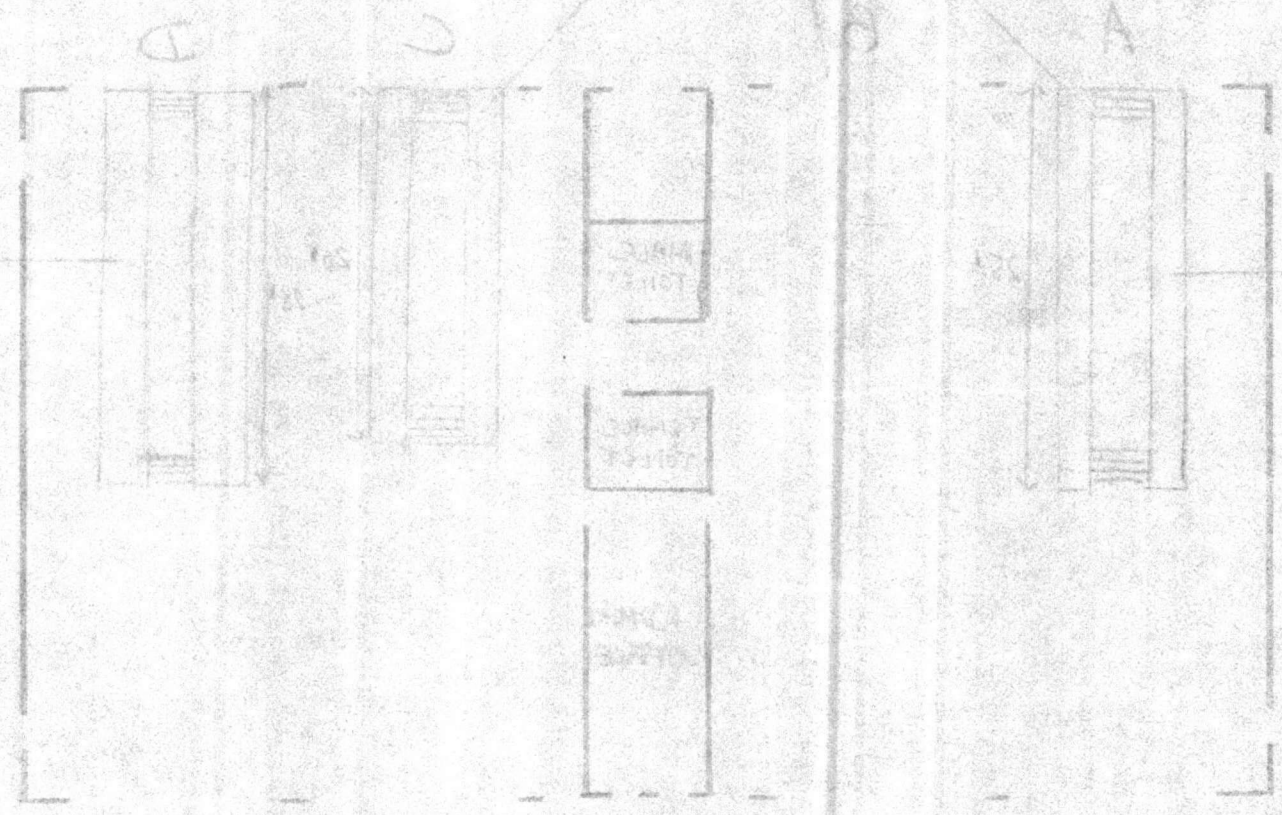


END (3)

OVERLAY FOR
 PROPOSED INSPECTION STATION
 NAVFAC 1294508

TRUCK VEHICLES
ORDERS

PHYSICAL REFLECTOR



INVESTIGATION REPORT
 PROPOSED INSPECTION STATION
 OVERLAY FOR

END (3)

11000
42
5 Aug 1985

FIRST ENDORSEMENT on CO, 2d MaintBn ltr 11000 4/N/R of 2 Aug 1985

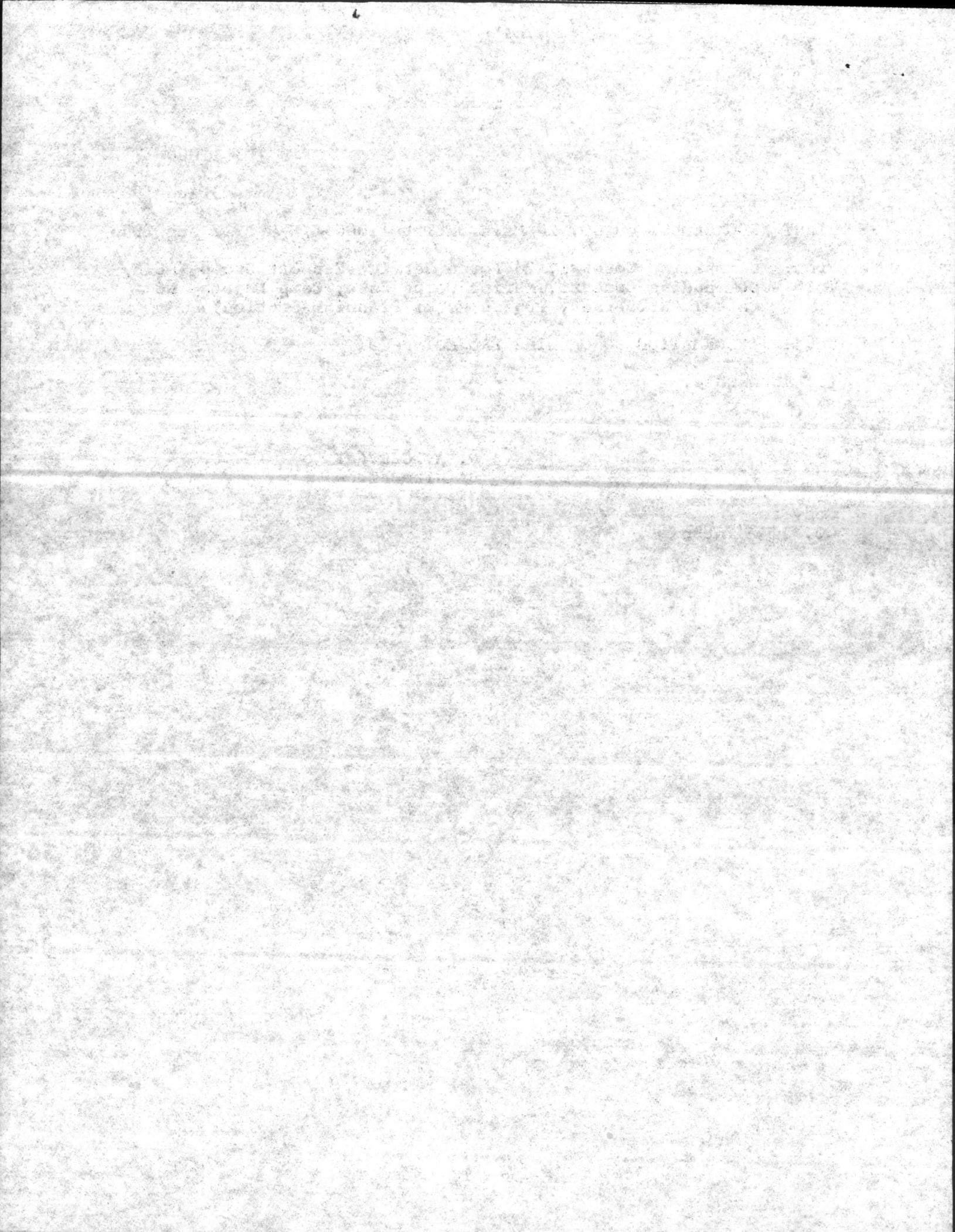
From: Commanding General, 2d Force Service Support Group (REIN)
To: Commanding General, Marine Corps Base, Camp Lejeune NC
(Attn: Mr. Brant, Public Works Planning Section)

Subj: INFORMATION CONCERNING PROJECT P-257

1. Forwarded.

D. A. CERVENY
By direction

Copy to:
CO, 2d MaintBn





UNITED STATES MARINE CORPS
2d Maintenance Battalion
2d Force Service Support Group (Rein)
Fleet Marine Force, Atlantic
Camp Lejeune, North Carolina 28542-5704

IN REPLY REFER TO:

11000
4/N/R
2 Aug 85

From: Commanding Officer, 2d Maintenance Battalion
To: Commanding General, Marine Corps Base, Camp Lejeune (Attn: AC/S Fac/OIC PW)
Via: Commanding General, 2d Force Service Support Group (Attn: AC/S CSS, Engr Spt/Fac)

Subj: PLANNING INFORMATION FOR NEW IMA INSPECTION STATION
(P-257)

Ref: (a) Phoncon btwn Mr. Dale Lee, Proj Mgr, Olson Assoc, and 1stLt NAZAROFF, Logistics Officer, 2d Maint Bn of 24 Jun 85

Encl: (1) Vehicle Dimensions/Weights of representative Motor Transport and Engineer Wheeled Vehicles.
(2) Vehicle Dimensions of representative Ordnance and Engineer tracked Vehicles
(3) Overlay for P-257

1. As requested during the reference, a thorough review of the planned inspection station (P-257) was conducted.

2. Enclosures (1) and (2) depict the dimensions/weights of the various vehicles the inspection station is planned to accommodate. In addition, the following comments apply to the subject plan.

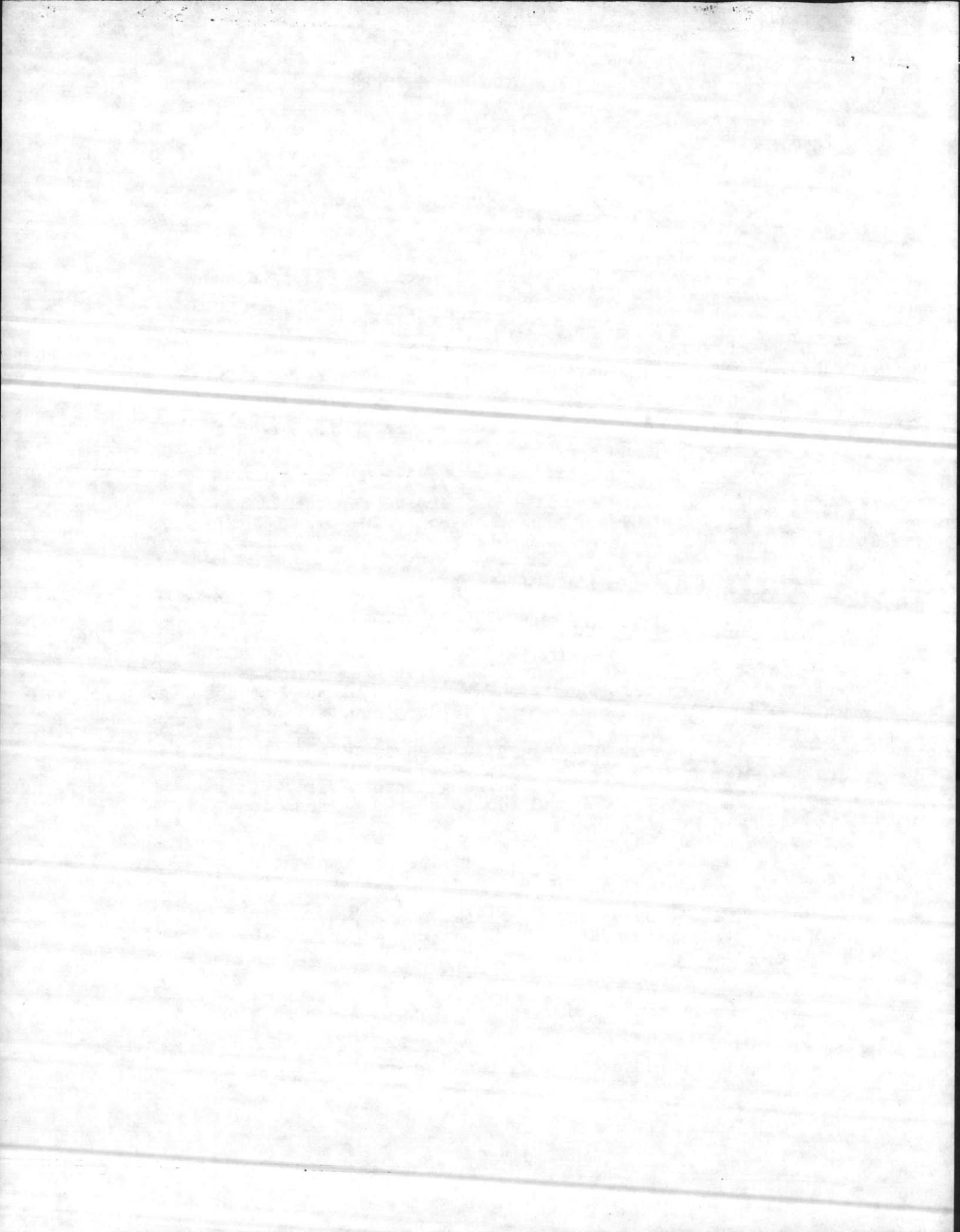
a. Stalls A and C should be designed (both width and height) to accommodate the complete range of vehicles listed in enclosure (1). We recommend the pits be forty inches wide. Pit A should be twenty-five feet long. Pit C should be twenty feet long.

b. Stall D should be designed (both width and height) to accommodate the range of vehicles listed in enclosure (2). We recommend the pit be fifty inches wide and twenty-five feet long.

3. Enclosure (3) provides an overlay depicting our proposed layout recommendations. In addition, we identified the following design requirements:

a. No lifts will be needed. The availability of three pits as noted, would satisfy our requirements. The pits should be equipped with the following:

(1) Six electrical outlets per pit (three on each side).



Subj: PLANNING INFORMATION FOR NEW IMA INSPECTION STATION (P-257)

(2) Four compressed air outlets, with hoses, per pit for air and power tools.

(3) Recessed lighting in pit walls for good visibility in the pits and under the vehicles

(4) Drains leading to an oil separator at the bottom of each pit.

(5) Recesses to support planks for use as a flat surface.

b. Each of the bays surrounding the pits should be equipped with:

(1) Two deep sinks with hot and cold water per bay, one each on opposing walls.

(2) Mercury vapor lights for general lighting.

(3) Overhead quartz radiant infrared heaters to provide heat in bays which require constant opening and high ventilation.

(4) Two eye wash stations per bay, one each on opposing walls.

(5) Four overhead electrical drop cords per pit.

(6) Exhaust tubes and ventilation for the range of anticipated vehicles are required in stalls A, B, C, and D. Stall D should be equipped with sufficient ventilation to dissipate exhaust fumes as hot as 1,200 degrees Fahrenheit produced by the M-1 Tank.

(7) Four 110 Volt, 60 cycle outlets per wall in each bay.

c. The administrative/support spaces should be modified and equipped as follows:

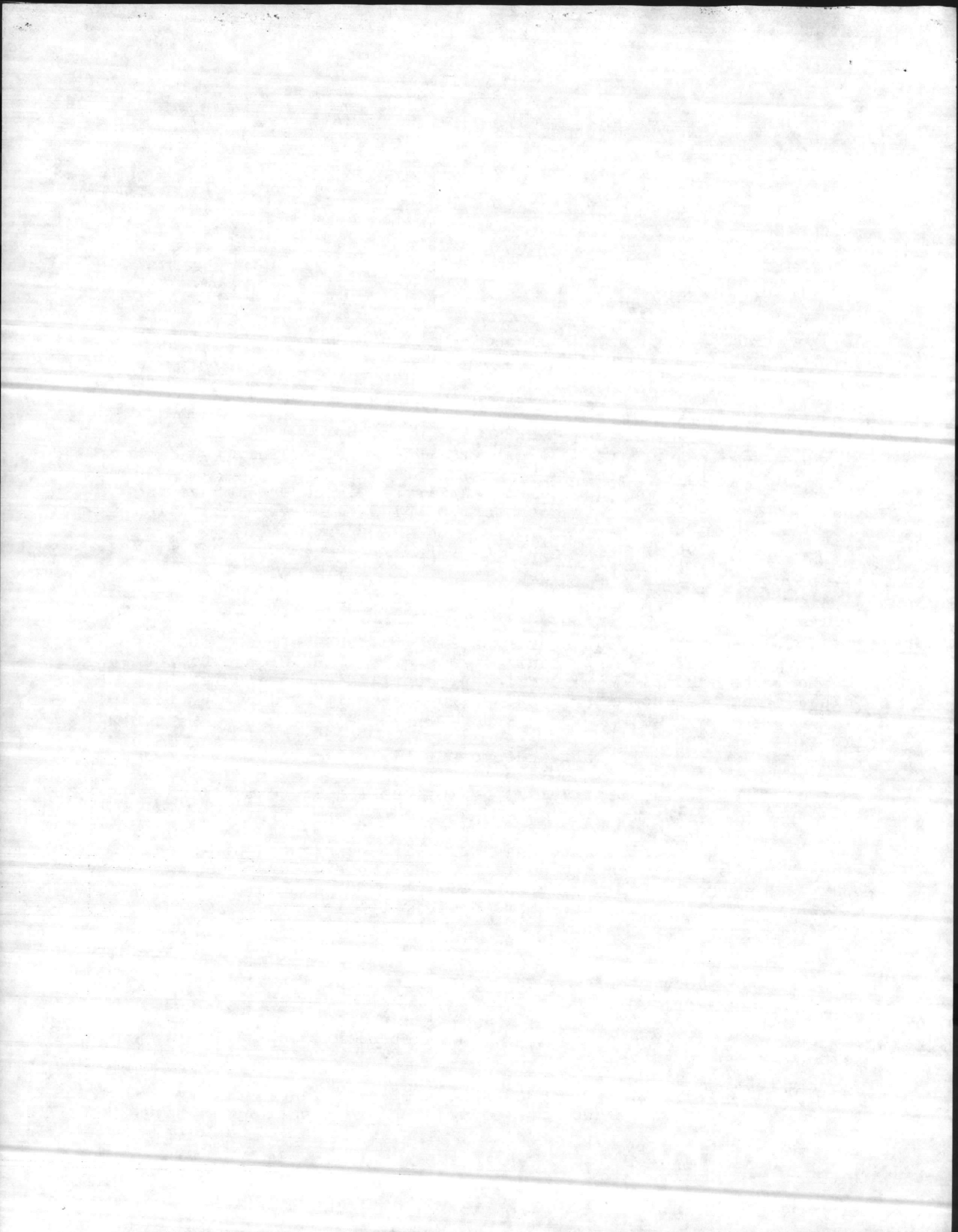
(1) Lavatories with industrial-type hand wash sinks and one shower stall in each head (male and female). For planning purposes approximately 15 Marines will be working in the facility. Of this number, 3 are anticipated to be female.

(2) Foot-operated faucets for sinks in the lavatories.

(3) Good general outdoor/security lighting in areas surrounding the inspection station.

(4) No vending area and no independent deep sink area except as noted above.

(5) Full view windows on each side of the administrative offices for visual control of maintenance functions in bays.



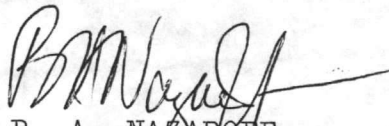
SUBJ: PLANNING INFORMATION FOR NEW IMA INSPECTION STATION (P-257)

- (6) Two outdoor 110 volt 60 cycle outlets on each wall.
- (7) Six 110 volt, 60 cycle outlets in the office spaces.
- (8) Two 110 volt, 60 cycle outlets per lavatory.
- (9) Four telephone hook-ups in administrative spaces.

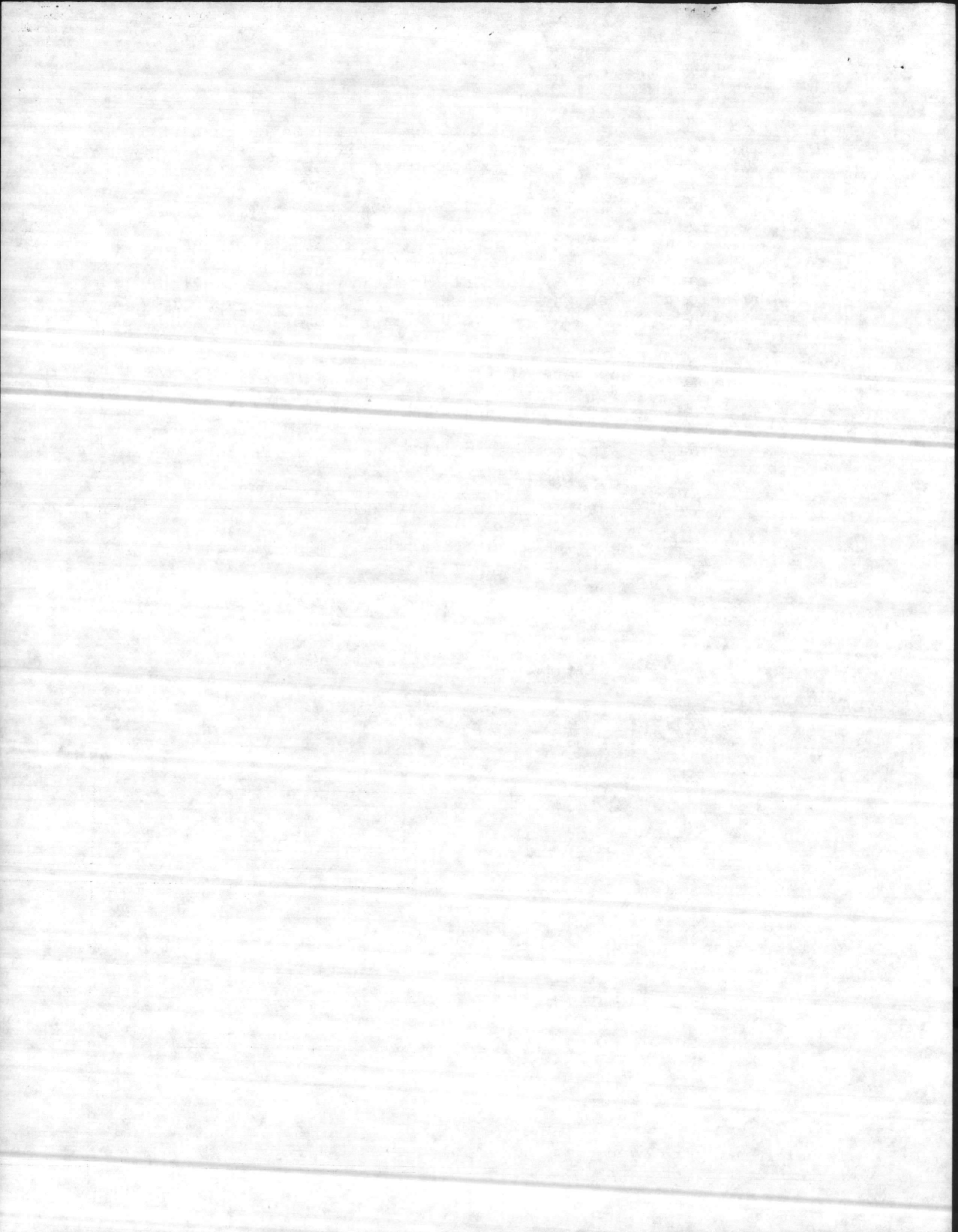
d. The wash rack area adjacent to the inspection station should be able to accommodate the same range/types of vehicles as the inspection station bays. In addition, the following should be incorporated:

- (1) Steam/hot water for cleaning vehicles.
- (2) Drains to an oil separator.
- (3) Lubrication outlets with 30 and 90 weight oil pumps and lubrication grease dispensers.
- (4) Good general outdoor/security lighting.

4. If you have any questions, please call First Lieutenant Nazaroff at 451-5222 or 3989.


B. A. NAZAROFF
By direction

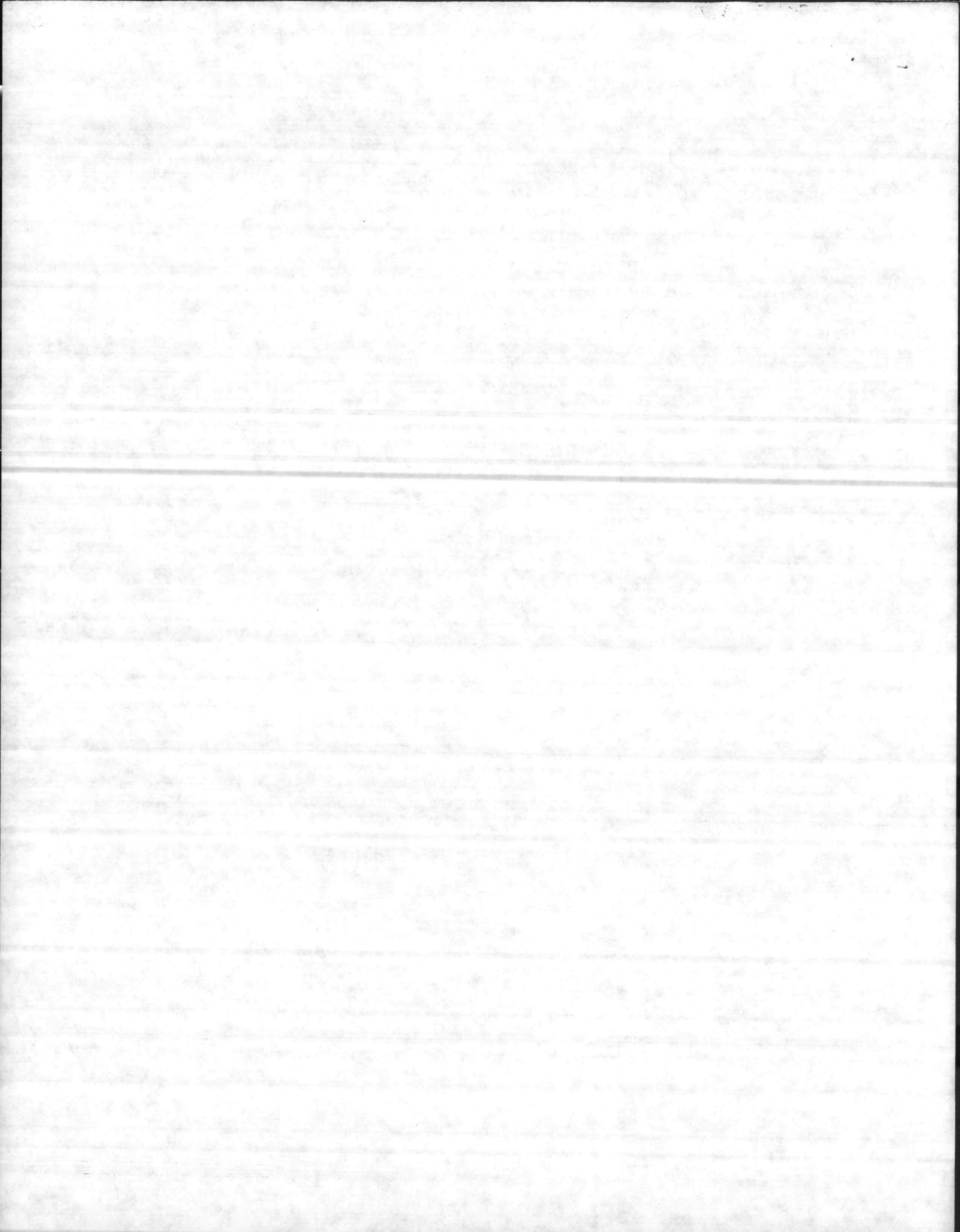
Copy to:
All company commanders
OIC, PW (Attn Mr. Jones)



VEHICLE DIMENSION MOTOR TRANSPORT/ENGINEER WHEELED VEHICLES

TAMCN	NOMEN	INTERNAL/ EXTERNAL DISTANCE BETWEEN FRONT WHEEL	INTERNAL/ EXTERNAL DISTANCE BETWEEN REAR WHEEL	DISTANCE BETWEEN FRONT AND REAR WHEELS	WT (LB)	HT (MAX)	L (MAX)
MOTOR TRANSPORT WHEELED VEHICLES							
D1061	M814	62"/86"	46"/98"	206"	21,479	116"	304"
D1140	M123AIC	63"/99.5"	48.5"/114"	211.5"	30,230	112"	288.8"
D1190	M109A3	58"/79"	47"/93"	178"	15,881	130"	263"
D0918	M1010	58.6"/83"	56.6"/86"	131.5"	5,900	99"	220.7"
D1215	M816	62"/86"	46"/98"	206"	36,129	106"	356"
D1180	M997	85"/85"	85"/85"	130"	5,000	72"	180"
D1020	M561	72"/72"	72"/72"	161"	10,200	98.8"	226.6"
D1160	M151A2	46"/62"	46"/64.3"	85"	2,400	71"	132.7"
D1064	A/S32P- 19A	61"/98"	59"/96"	170"	24,260	120"	325"
D0209	MK 48/15	61"/98"	62"/96"	259"	50,550	102"	444"
ENGINEER WHEELED VEHICLES							
B0399	MC2500	66"/116"	66"/116"	146"	71,470	12'8"	529"
B2565	MC4000	49"/81"	49"/81"	94"	8,000	85.7"	198.5"
B2465	MC10000	60"/101"	60"/101"	102"	34,600	139"	213.5"

Enclosure (1)

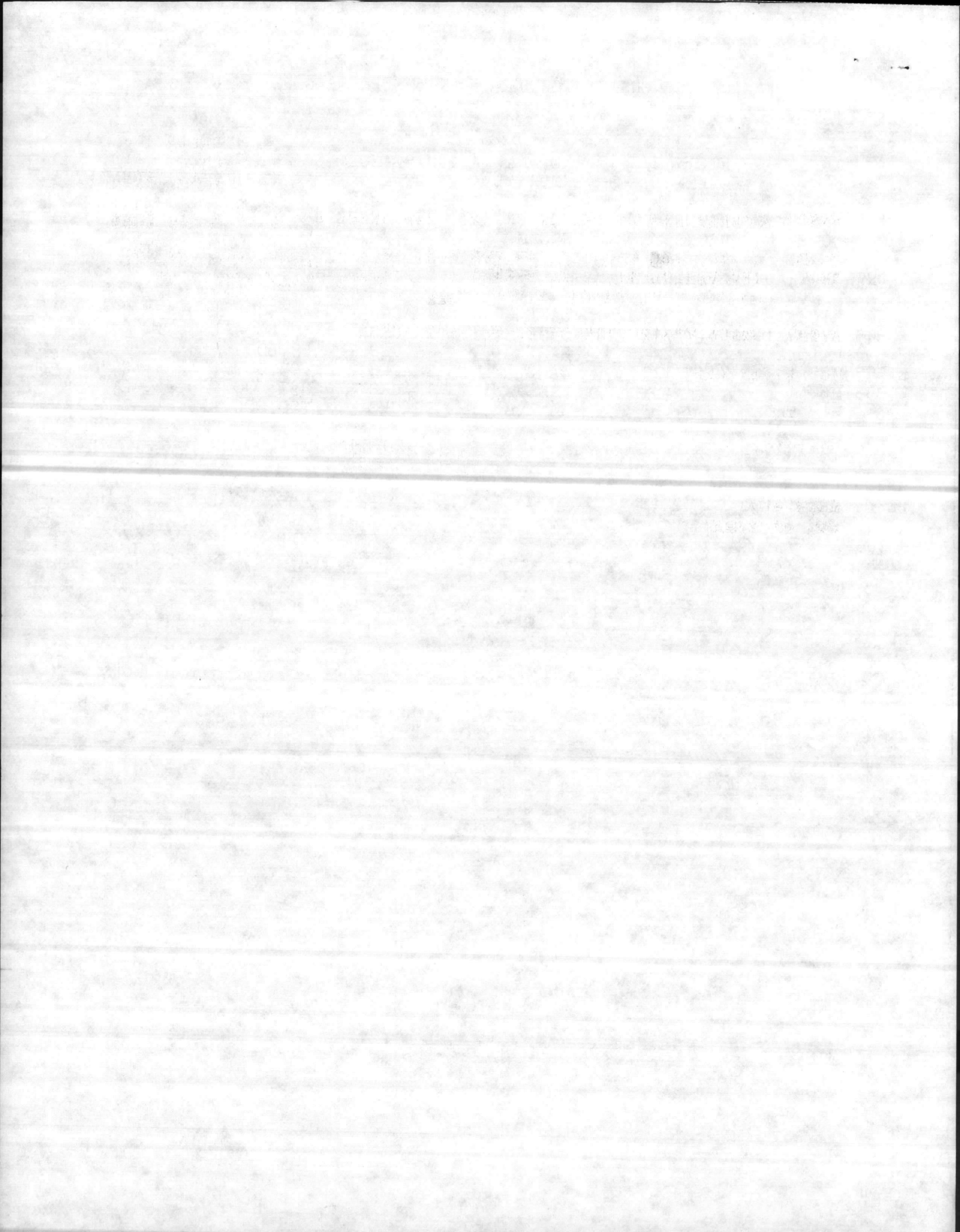


VEHICLE DIMENSIONS ORDNANCE/ENGINEER TRACKED VEHICLES

TAMCN NOMEN	INTERNAL/ EXTERNAL DISTANCE BETWEEN TRACKS	INTERNAL/ EXTERNAL DISTANCE BETWEEN TRACKS	DISTANCE BETWEEN FRONT AND REAR WHEELS	WT (LB)	HT (MAX)	L (MAX)
ORDNANCE TRACKED VEHICLES						
EO663 M109A3	88"/124"	SAME	TRACKS	43,500	120.43"	356"
EO845 LVTP7A1	86.7"/128.72"	SAME	TRACKS	49,800	128.5"	312.75
EO692 M110A2	88"/124"	SAME	TRACKS	55,600	115"	294"
E1377 M88A1	7'3"/11'3"	SAME	TRACKS	105,000	10'3"	27'1 1/2"
E1855 M60A1	87"/143"	SAME	TRACKS	97,000	128.2"	273.5"
M1 TANK	88"/136"	SAME	TRACKS	120,000	113.6"	354.2"

ENGINEER TRACKED VEHICLES

B2462 D7G	54 1/2"/103"	54 1/2"/103"	TRACKS	44,350	129.1"	208"
B2468 MRS-1-100	98"/131"	98"/131"	125" F&R 265" REAR AXLE TRACTOR REAR AXLE SCRAPER	65,400	147"	131"



11000
42
5 Aug 1985

FIRST ENDORSEMENT on CO, 2d MaintBn ltr 11000 4/N/R of 2 Aug 1985

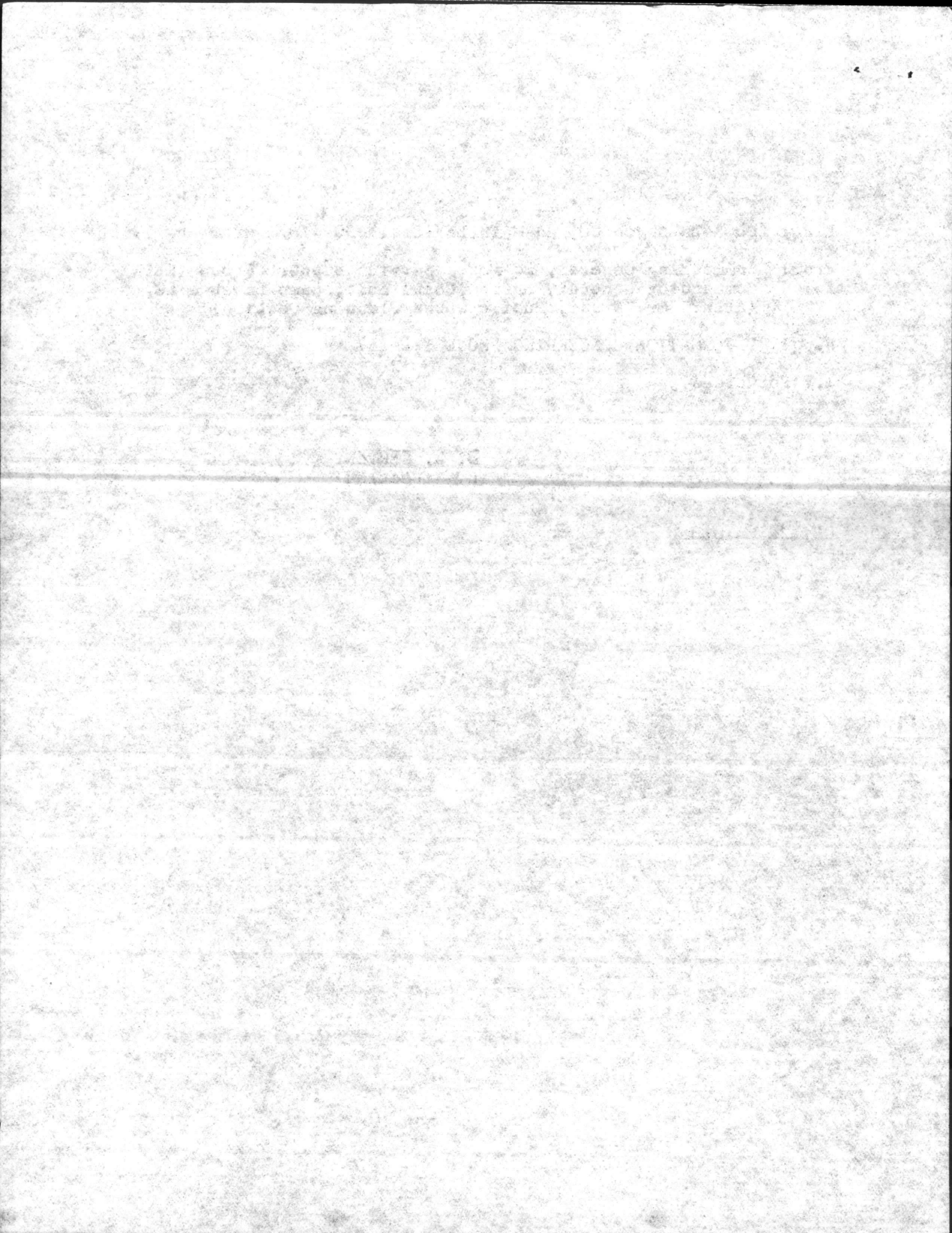
From: Commanding General, 2d Force Service Support Group (REIN)
To: Commanding General, Marine Corps Base, Camp Lejeune NC
(Attn: Mr. Brant, Public Works Planning Section)

Subj: INFORMATION CONCERNING PROJECT P-257

1. Forwarded.

D. A. CERVENY
By direction

Copy to:
CO, 2d MaintBn





UNITED STATES MARINE CORPS
2d Maintenance Battalion
2d Force Service Support Group (Rein)
Fleet Marine Force, Atlantic
Camp Lejeune, North Carolina 28542-5704

IN REPLY REFER TO:

11000
4/N/R
2 Aug 85

From: Commanding Officer, 2d Maintenance Battalion
To: Commanding General, Marine Corps Base, Camp Lejeune (Attn: AC/S Fac/OIC PW)
Via: Commanding General, 2d Force Service Support Group (Attn: AC/S CSS, Engr Spt/Fac)

Subj: PLANNING INFORMATION FOR NEW IMA INSPECTION STATION (P-257)

Ref: (a) Phoncon btwn Mr. Dale Lee, Proj Mgr, Olson Assoc, and 1stLt NAZAROFF, Logistics Officer, 2d Maint Bn of 24 Jun 85

Encl: (1) Vehicle Dimensions/Weights of representative Motor Transport and Engineer Wheeled Vehicles.
(2) Vehicle Dimensions of representative Ordnance and Engineer tracked Vehicles
(3) Overlay for P-257

1. As requested during the reference, a thorough review of the planned inspection station (P-257) was conducted.

2. Enclosures (1) and (2) depict the dimensions/weights of the various vehicles the inspection station is planned to accommodate. In addition, the following comments apply to the subject plan.

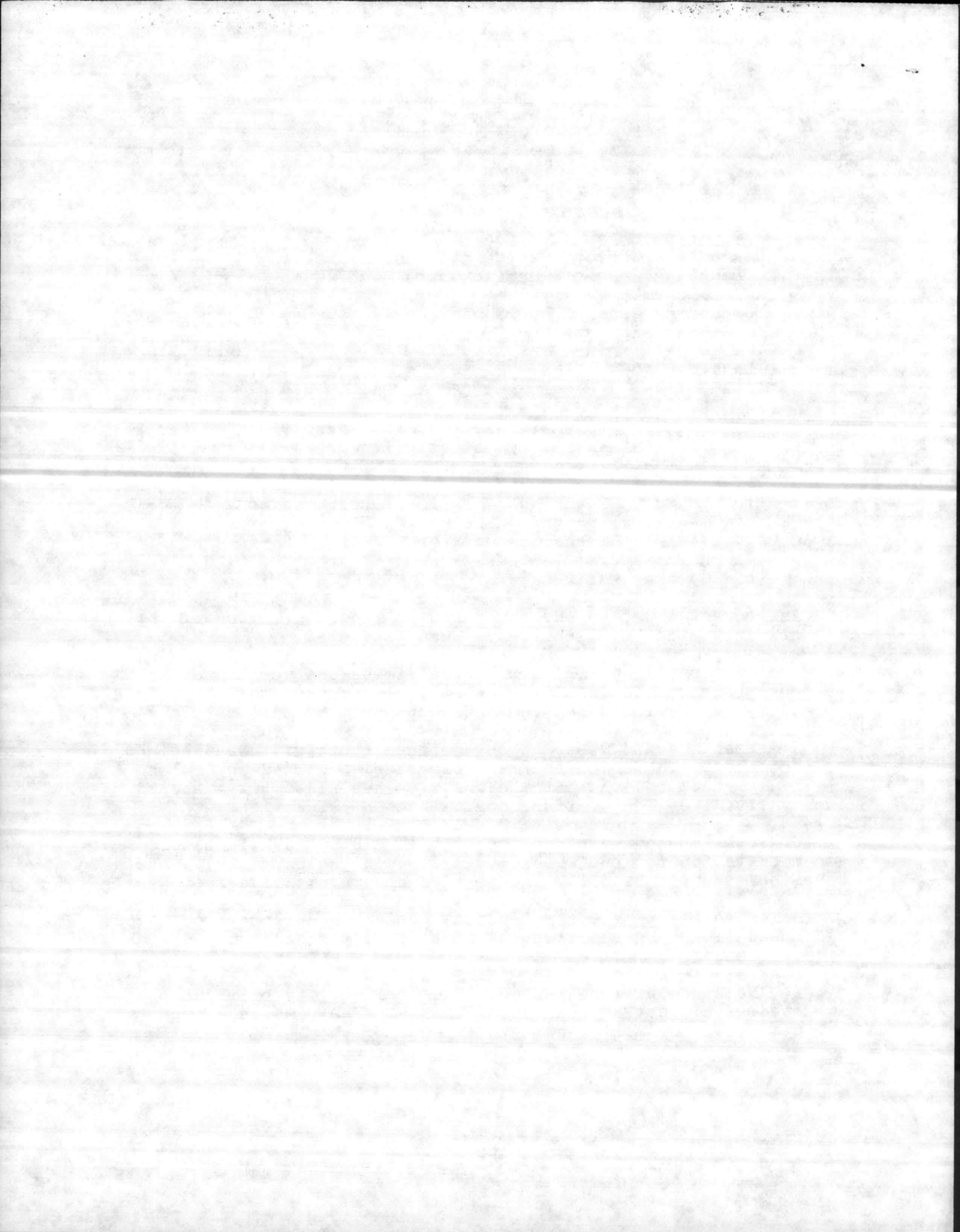
a. Stalls A and C should be designed (both width and height) to accommodate the complete range of vehicles listed in enclosure (1). We recommend the pits be forty inches wide. Pit A should be twenty-five feet long. Pit C should be twenty feet long.

b. Stall D should be designed (both width and height) to accommodate the range of vehicles listed in enclosure (2). We recommend the pit be fifty inches wide and twenty-five feet long.

3. Enclosure (3) provides an overlay depicting our proposed layout recommendations. In addition, we identified the following design requirements:

a. No lifts will be needed. The availability of three pits as noted, would satisfy our requirements. The pits should be equipped with the following:

(1) Six electrical outlets per pit (three on each side).



Subj: PLANNING INFORMATION FOR NEW IMA INSPECTION STATION (P-257)

(2) Four compressed air outlets, with hoses, per pit for air and power tools.

(3) Recessed lighting in pit walls for good visibility in the pits and under the vehicles

(4) Drains leading to an oil separator at the bottom of each pit.

(5) Recesses to support planks for use as a flat surface.

b. Each of the bays surrounding the pits should be equipped with:

(1) Two deep sinks with hot and cold water per bay, one each on opposing walls.

(2) Mercury vapor lights for general lighting.

(3) Overhead quartz radiant infrared heaters to provide heat in bays which require constant opening and high ventilation.

(4) Two eye wash stations per bay, one each on opposing walls.

(5) Four overhead electrical drop cords per pit.

(6) Exhaust tubes and ventilation for the range of anticipated vehicles are required in stalls A, B, C, and D. Stall D should be equipped with sufficient ventilation to dissipate exhaust fumes as hot as 1,200 degrees Fahrenheit produced by the M-1 Tank.

(7) Four 110 Volt, 60 cycle outlets per wall in each bay.

c. The administrative/support spaces should be modified and equipped as follows:

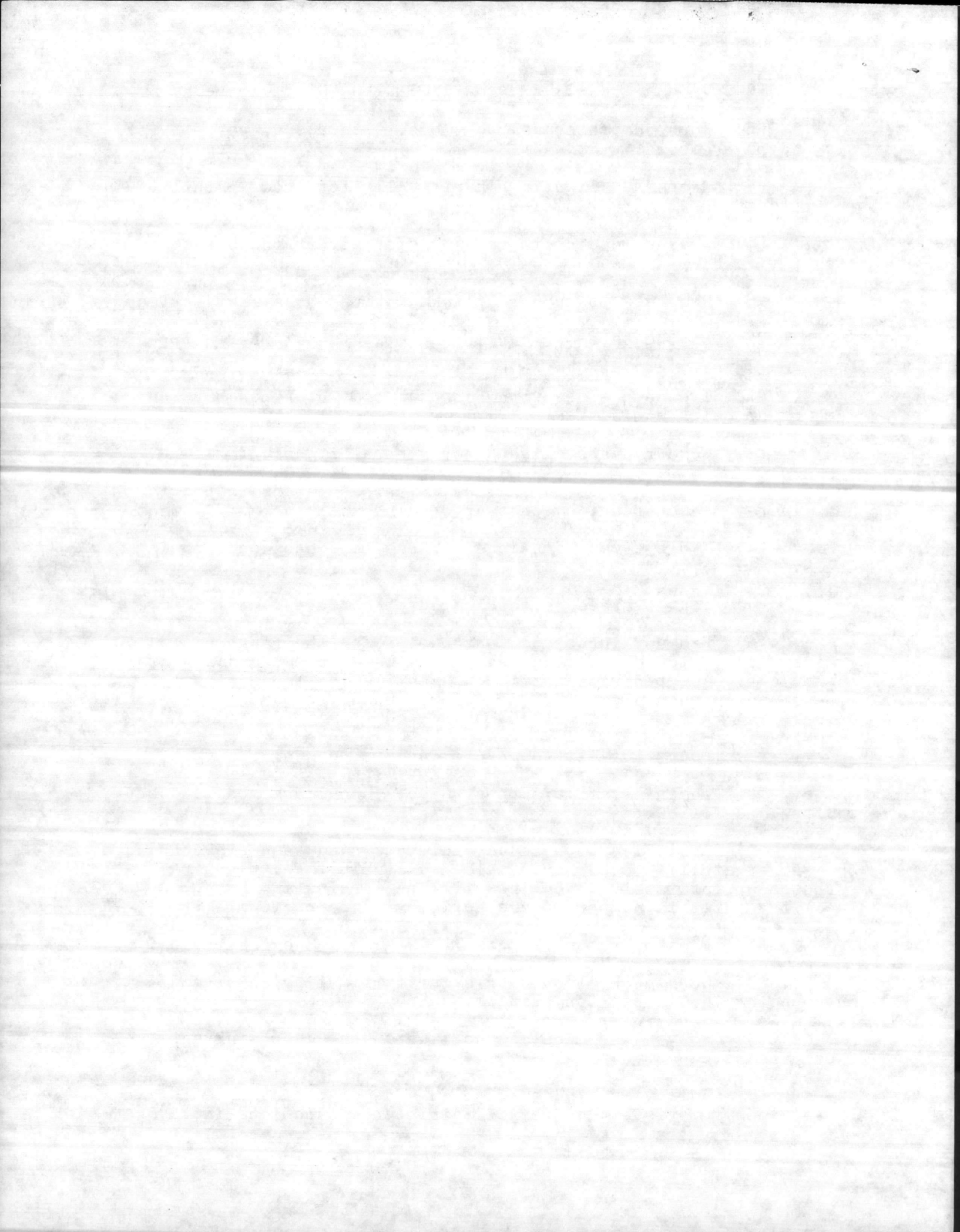
(1) Lavatories with industrial-type hand wash sinks and one shower stall in each head (male and female). For planning purposes approximately 15 Marines will be working in the facility. Of this number, 3 are anticipated to be female.

(2) Foot-operated faucets for sinks in the lavatories.

(3) Good general outdoor/security lighting in areas surrounding the inspection station.

(4) No vending area and no independent deep sink area except as noted above.

(5) Full view windows on each side of the administrative offices for visual control of maintenance functions in bays.



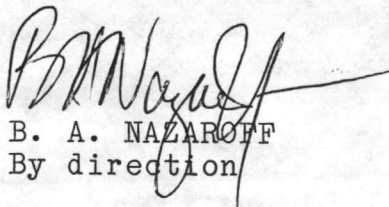
SUBJ: PLANNING INFORMATION FOR NEW IMA INSPECTION STATION (P-257)

- (6) Two outdoor 110 volt 60 cycle outlets on each wall.
- (7) Six 110 volt, 60 cycle outlets in the office spaces.
- (8) Two 110 volt, 60 cycle outlets per lavatory.
- (9) Four telephone hook-ups in administrative spaces.

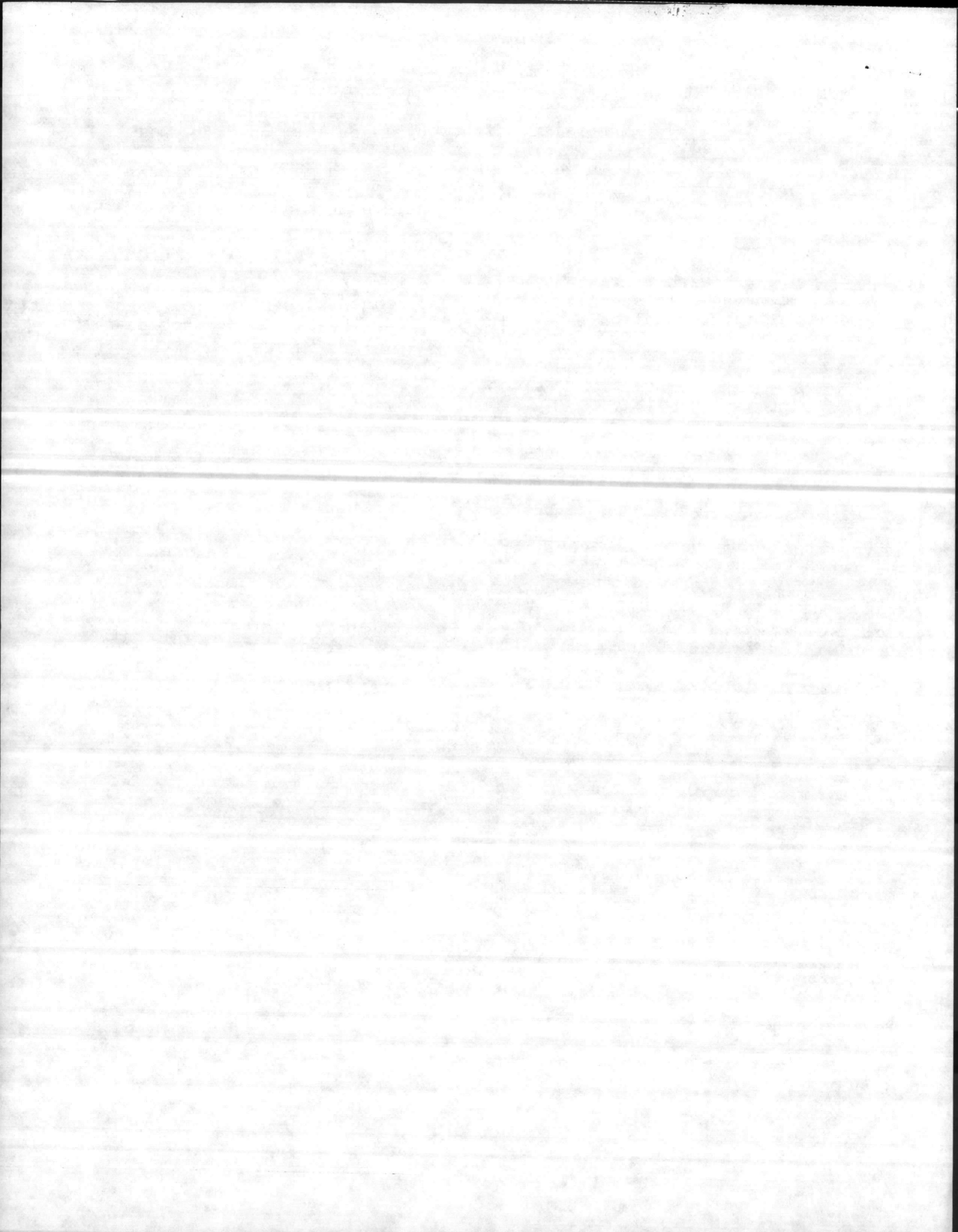
d. The wash rack area adjacent to the inspection station should be able to accommodate the same range/types of vehicles as the inspection station bays. In addition, the following should be incorporated:

- (1) Steam/hot water for cleaning vehicles.
- (2) Drains to an oil separator.
- (3) Lubrication outlets with 30 and 90 weight oil pumps and lubrication grease dispensers.
- (4) Good general outdoor/security lighting.

4. If you have any questions, please call First Lieutenant Nazaroff at 451-5222 or 3989.


B. A. NAZAROFF
By direction

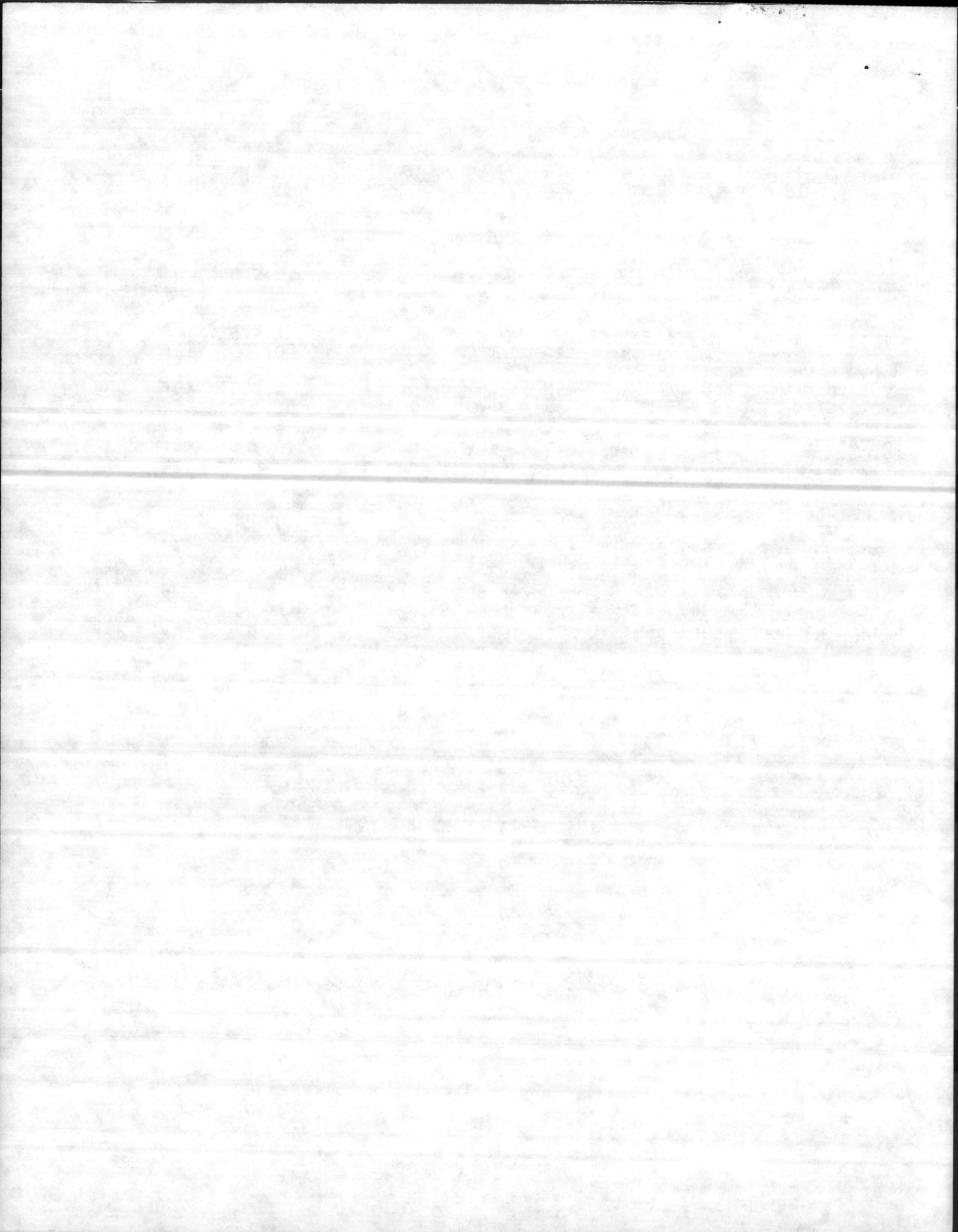
Copy to:
All company commanders
OIC, PW (Attn Mr. Jones)



VEHICLE DIMENSION MOTOR TRANSPORT/ENGINEER WHEELED VEHICLES

TAMCN	NOMEN	INTERNAL/ EXTERNAL DISTANCE BETWEEN FRONT WHEEL	INTERNAL/ EXTERNAL DISTANCE BETWEEN REAR WHEEL	DISTANCE BETWEEN FRONT AND REAR WHEELS	WT (LB)	HT (MAX)	L (MAX)
MOTOR TRANSPORT WHEELED VEHICLES							
D1061	M814	62"/86"	46"/98"	206"	21,479	116"	304"
D1140	M123AIC	63"/99.5"	48.5"/114"	211.5"	30,230	112"	288.8"
D1190	M109A3	58"/79"	47"/93"	178"	15,881	130"	263"
D0918	M1010	58.6"/83"	56.6"/86"	131.5"	5,900	99"	220.7"
D1215	M816	62"/86"	46"/98"	206"	36,129	106"	356"
D1180	M997	85"/85"	85"/85"	130"	5,000	72"	180"
D1020	M561	72"/72"	72"/72"	161"	10,200	98.8"	226.6"
D1160	M151A2	46"/62"	46"/64.3"	85"	2,400	71"	132.7"
D1064	A/S32P- 19A	61"/98"	59"/96"	170"	24,260	120"	325"
D0209	MK 48/15	61"/98"	62"/96"	259"	50,550	102"	444"
ENGINEER WHEELED VEHICLES							
B0399	MC2500	66"/116"	66"/116"	146"	71,470	12'8"	529"
B2565	MC4000	49"/81"	49"/81"	94"	8,000	85.7"	198.5"
B2465	MC10000	60"/101"	60"/101"	102"	34,600	139"	213.5"

Enclosure (1)



VEHICLE DIMENSIONS ORDNANCE/ENGINEER TRACKED VEHICLES

TAMCN NOMEN	INTERNAL/ EXTERNAL DISTANCE BETWEEN TRACKS	INTERNAL/ EXTERNAL DISTANCE BETWEEN TRACKS	DISTANCE BETWEEN FRONT AND REAR WHEELS	WT (LB)	HT (MAX)	L (MAX)
ORDNANCE TRACKED VEHICLES						
E0663 M109A3	88"/124"	SAME	TRACKS	43,500	120.43"	356"
E0845 LVTP7A1	86.7"/128.72"	SAME	TRACKS	49,800	128.5"	312.75
E0692 M110A2	88"/124	SAME	TRACKS	55,600	115"	294"
E1377 M88A1	7'3"/11'3"	SAME	TRACKS	105,000	10'3"	27'1 1/2"
E1855 M60A1	87"/143"	SAME	TRACKS	97,000	128.2"	273.5"
M1 TANK	88"/136"	SAME	TRACKS	120,000	113.6"	354.2"

ENGINEER TRACKED VEHICLES

B2462 D7G	54 1/2"/103"	54 1/2"/103"	TRACKS	44,350	129.1"	208"
B2468 MRS-1-100	98"/131"	98"/131"	125" F&R 265" REAR AXLE TRACTOR REAR AXLE SCRAPER	65,400	147"	131"

Enclosure (2)

