



Digital Archaeology






Netscape: Version 4.75-20000815

Back Forward Reload Home Search Netscape Images Print Security Shop Stop

Location: <http://www.hrc.uimin.ac.uk> What's Related



HYPERMEDIA RESEARCH CENTRE

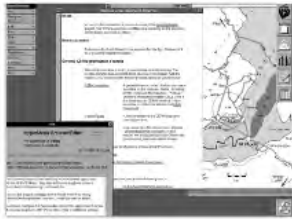
HyperMedia

- [Manifesto](#) — the first hypermedia article
- [MA degree course brochure](#) — about the course
- [MA Students' pages](#) — studying with the HRC

© J. Meller



SAE AS - DAN!



Expedia.com



COMMERCIAL WEB



EXPERIMENTAL WEB



PRE-SOCIAL WEB



SARE AS - 004!

The screenshot displays the WorldWideWeb browser interface. On the left is a vertical menu with options: Info, Navigate, Document, Edit, Find, Links, Style, Print, Page layout, Windows, Services, Hide, and Quit. The main window is titled 'Welcome to the Universe of HyperText' and contains the following text:

Home

Access to this information is provided as part of the [WorldWideWeb](#) project. The WWW project does not take responsibility for the accuracy of information provided by others.

How to proceed

References to other information are represented like [this](#). Double-click on it to jump to related information.

General CERN Information sources

Now choose an area in which you would like to start browsing. The system currently has access to three sources of information. With the indexes, you should use the keyword search option on your browser.

[CERN Information](#) A general keyword index of information made available by the computer centre, including CERN, Cray and IBM help files, "Writeups", and the Computer Newsletter (CNL). (This is the same data on CERNVM which is also available on CERNVM with the VM FIND command.)

[Yellow Pages](#) A keyword index to the CERN telephone book by function.

You can access the internet news scheme (See [information for new users](#)). News articles are distributed typically CERN-wide or worldwide, and have a finite lifetime.

may be of general interest at CERN include

[Technology Interest Group](#) news.

machine, see also the following topics:

[on this WorldWideWeb application](#)

On the right side of the browser window is a map of the CERN facility near Geneva, Switzerland. The map shows the LEP accelerator ring, various buildings like the Fermi-Voltaire building, and the JAC (Johns Accelerator Centre). A scale bar indicates 0 to 5 km. A compass rose points towards Paris. A toolbar on the right contains icons for navigation and editing.

At the bottom of the browser window, there is a small window titled 'Info' with the following text:

HyperMedia Browser/Editor

An exercise in global information availability

by Tim Berners-Lee

Text which is not constrained to be linear

edia: Information which is not constrained linear... or to be text.

This is the first version of the NextStep WorldWideWeb application with the libWWW library. Bug reports to www-bug@info.cern.ch. Check the list of known bugs in the web too.

This was the original prototype for the World-Wide Web. Many browsers for other platforms now exist. Read the web for details.

You should configure the newsreader code in this application to know where your local news (NNTP) server is. Type in a terminal window

WORD

Books Culture Your Move

DEC 30

WORD TV



FEATURES



The Eskimos' Hundred Words for Snow

Let it flap, let it priyakli, let it shlim! By Phil James. Requires the Shockwave plug-in.



12-18 Holiday Post-e-Card Mailing Machine '99

Now is the time to send happy seasonal greetings to all of your friends and associates! Fully personalized and free of charge for two whole weeks of deluxe seasonal pleasure. Requires the Shockwave plug-in.



11-18 My Life as a Lawyer

Jonathan Foreman works 100-hour weeks for a guy called "Caligula."



Personals
We met 10/24, #1 train. You had Psych book, I had black cap.

MONTHLY



PIXEL TIME

Y2K
Draw and win.



THE THING

@2000
By Ichiro Akawa



FRED

Fred Gets a Job

Month	Year	Event
Dec	2000	
Nov	2000	
Oct	2000	
Sep	2000	
Aug	2000	
Jul	2000	
Jun	2000	
May	2000	
Apr	2000	
Mar	2000	
Feb	2000	
Jan	2000	

DAILY

THU 12-23



Horoscopes From The Lavender Planet

WED 12-22



USA Waste
The Christmas Winner

TUE 12-21



Toozeday Komix

MON 12-20



Work
Chef

SAT 12-18



Talk Inn
I Ain't Never Goin' Back To...

FRI 12-17



Staff Home Page
Rize

Home
About
Contact
Privacy
Terms

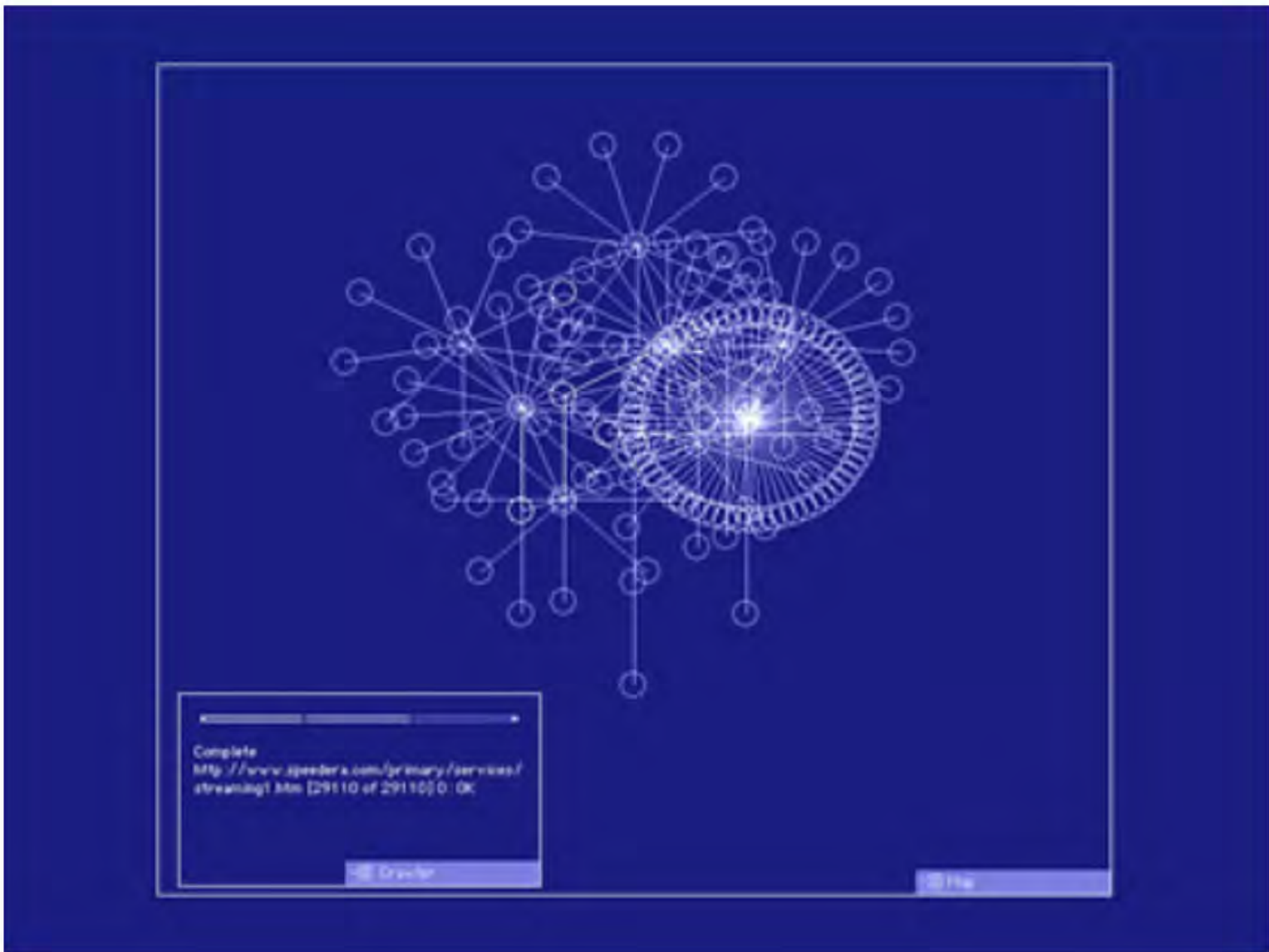


ML MODERN LIVING

99-95		 animated gif-loop
94-90		
89-85		
84-80		
79-75		
74-70		
69-65		
64-60		
59-55		
54-50		
49-45		
44-40		
39-35		
34-30		
29-25		
24-20		
19-15		
14-10		

ML MODERN LIVING *10 'Dental care' 78-k 07-03-1998

© H. Hoogerbrugge





COMMUNICATION





SUBMIT

[PHOTOS](#)

[CHICKEN MASK](#)

[TELL A FRIEND](#)

[BK TENDERCRISP](#)

Official Burger King site: ™ & © 2011 Burger King Brands, Inc. (USA only). ™ & © 2011 Burger King Corporation (outside USA). All rights reserved.









ARCHAEOLOGY





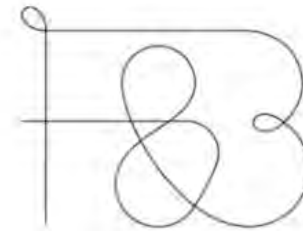
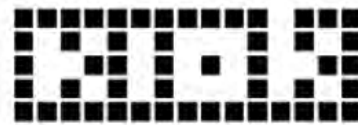
DIGIT

thebarbariangroup



firstborn®

deepend



R/GA

antirom



AKQA

> LATERAL

WE ARE INSPIRED BY THE FUTURE,
WE DO NOT CELEBRATE THE PAST

Play-Create



















THANKS HELEN!





FIRST TIME TRAGEDY,
SECOND TIME FARCE



**INTERNET
WEEK**
NEW YORK.
JUNE 6-13, 2011













WE'LL TAKE THE CASH



THANKS ABBIE!

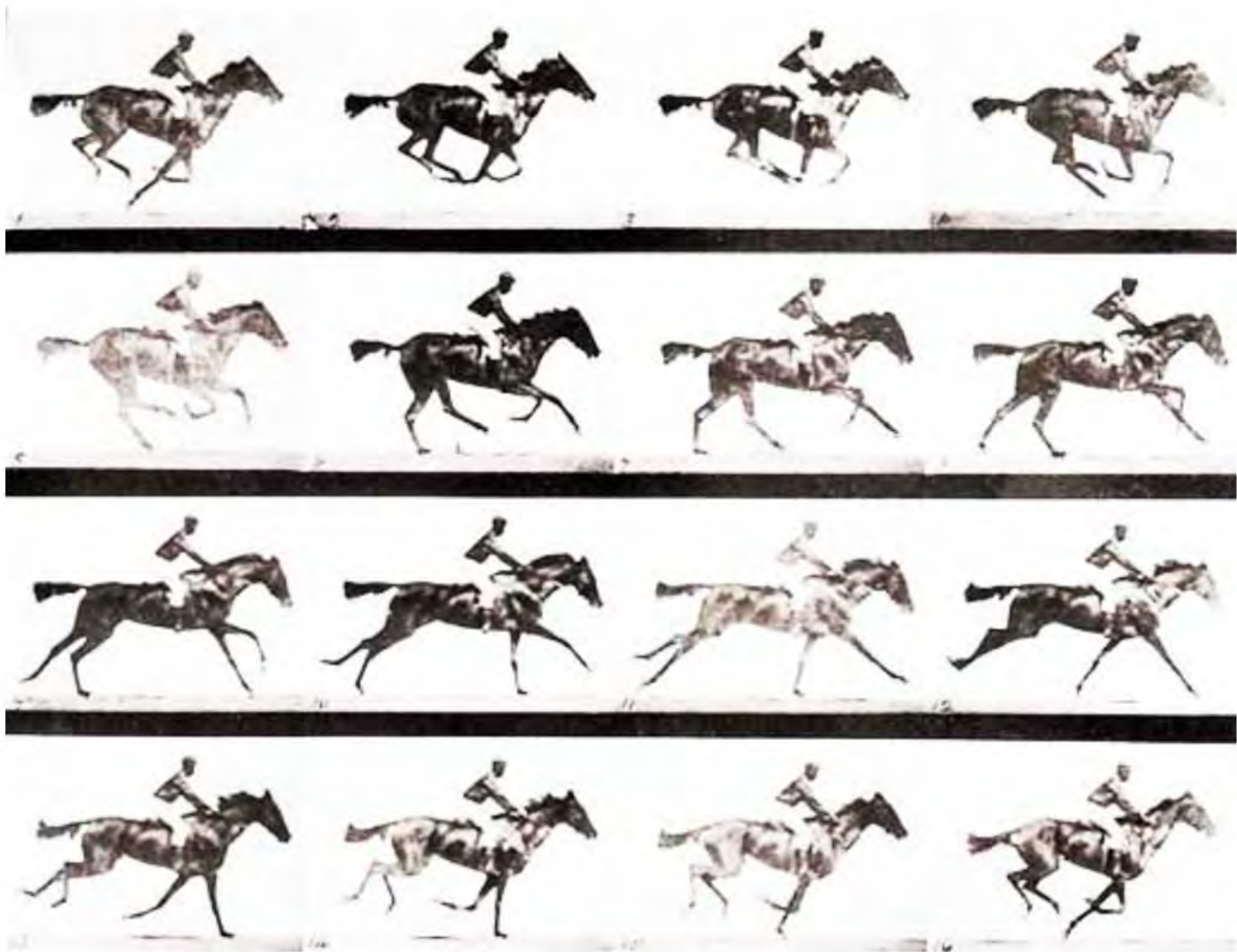






can to ARMS!









Story

JIM.FOULTON@STORYWORLDWIDE.COM

@JIM-FOULTON