



MrSID™ Macintosh Stand Alone Viewer

Version 2.0

INTRODUCTION

The MrSID Stand Alone Viewer displays images that have been encoded into the MrSID format. Each MrSID image file contains data from multiple resolutions stored in a single pixel database. The MrSID Viewer starts viewing an image at the smallest resolution view, and allows complete control to zoom, pan, navigate and investigate through larger and smaller zoom levels. The Viewer uses Selective Decompression™ to decode only the portion of an image necessary for viewing. This makes rapid viewing of large images possible, while maintaining maximum image quality. With the MrSID Stand Alone Viewer, you can also export any part of the image to TIFF at any resolution. The MrSID Stand Alone Viewer is available at no charge for individual use, so that the largest possible number of people have the ability to view MrSID imagery.

TABLE OF CONTENTS

INTRODUCTION	1
TABLE OF CONTENTS	1
ABOUT LIZARDTECH	2
ABOUT THIS MANUAL	2
CHAPTER 1: GETTING STARTED	3
System requirements	3
Installation instructions	3
Preparing to use the product	3
Technical Support information	3
Technical support prep	4
<i>LizardTech Email Technical Support</i>	4
CHAPTER 2: USING THE PRODUCT	5
Launching MrSID Stand Alone Viewer	5
Opening an Image	5
The MrSID Stand Alone Viewer Window	6
MrSID Stand Alone Viewer Tools	7
<i>Zooming</i>	7
<i>Panning</i>	7
<i>Save as TIFF</i>	7
<i>Printing</i>	7
CHAPTER 3: TROUBLESHOOTING GUIDE	9
CONTACTING LIZARDTECH	10

ABOUT LIZARDTECH

LizardTech is a Seattle-based, privately held company that provides software and technology to enable instant access to massive raster imagery. LizardTech has developed specific solutions that address the needs of government and industry, including the geospatial, medical and publishing markets.

LizardTech's MrSID is the most advanced and powerful imaging environment on the market today. MrSID was developed at Los Alamos National Laboratory (LANL) by the same team that developed the current FBI standard for fingerprint image compression. The MrSID Portable Image Format has been developed specifically for customers who work with extremely large files (GB and TB), need incredibly fast access to their images via standard network, Internet and wireless protocols, and demand visually lossless image compression for mission-critical decision making.

LizardTech is a global company with a network of high profile customers and strategic partners. In 1998, LizardTech was voted the Washington Software Alliance's Most Promising New Company.

Additional information about LizardTech and the full line of MrSID software solutions can be found on the World Wide Web at www.lizardtech.com.

ABOUT THIS MANUAL

The MrSID Stand Alone Viewer User Guide provides detailed information about using the MrSID Stand Alone Viewer. Please use this document as a reference tool. It provides instructions for using MrSID on the Mac OS™ platform. This guide assumes you have a working knowledge of your computer and your operating system – including the ability to use a mouse, understand standard menu options and keystroke commands as well as the ability to open, save and close files. For any help with these functions, please refer to your Mac OS documentation.

System requirements

- An Apple Power Macintosh computer.
- Mac OS version 8.5 or later.
- Minimum of 96 MB of RAM with 20 MB RAM allocated to the MrSID Stand Alone Viewer.
- 2 MB available hard-disk space for installation.
- Additional hard-disk space required; amount varies depending on image size.
- Color monitor with 24-bit or greater video card.
- Internet connection for product download.

Installation instructions

You must install the MrSID Stand Alone Viewer onto your Macintosh computer; you cannot run the program from the Internet.

1. Download the MrSID Stand Alone Viewer from the LizardTech Web site.
2. Drag the file into your **Applications** folder on your Mac OS. The application is now installed. No further installation procedure is required.

Preparing to use the product

Once the MrSID Stand Alone Viewer is installed, there are just a few more steps you must complete before using your product. First, double-check your memory allocation for the Viewer. To check the memory allocation, navigate to the **MrSID Stand Alone Viewer** icon. You must modify the actual application itself and not an alias to the application.

1. Single click on the icon to highlight it, and choose **FileGet Info** or use the keyboard shortcut **Command-I**.
2. Choose **Memory** from the drop-down box. In the dialog box that appears, enter the minimum and preferred memory amounts for the application.
3. Close the **Memory** dialog box, and you can use your applications as usual. For more information about memory management, see your Mac OS manuals.

Technical Support information

If you are having trouble with the software, we recommend you follow these few steps that may resolve your problem before emailing our technical support department:

- **Read our Troubleshooting Guide:** the [Troubleshooting](#) section of this manual provides suggestions for dealing with known issues in the components of MrSID Stand Alone Viewer, and also provides information about features that you may have questions about.
- **Visit our online Technical Support database:** LizardTech provides technical support via our website at <http://www.lizardtech.com/support/db>.

You will find answers to the most common questions you may have about using and troubleshooting MrSID components in the **Support** section of our website, and in the Troubleshooting section of this document.

Technical support prep

If your problem persists, we're here to help. Before emailing, please take a moment to answer these simple questions. Possible answers are provided in parentheses after the question to make things easier for you:

1. Which operating system and version are you using? (Mac OS Version __)
2. How much free hard drive space do you have? (10-100 MB, 101-500 MB, Over 500 MB)
3. How much RAM do you have? (Under 64 MB, 64-128 MB, Over 128 MB)
4. How much RAM do you have allocated to the MrSID Stand Alone Viewer?
5. What are you doing when the problem occurs?
 - Opening a MrSID file.
 - Saving a MrSID file from Photoshop
 - Printing a MrSID image.
 - Other.
6. Does it happen every time? If not, do you know what specific event triggers the problem?
7. Are you getting an error message? If so, please write down the exact error message.

LizardTech Email Technical Support

For help with the MrSID Stand Alone Viewer you can send an email to techsupport@lizardtech.com. You can expect a 3-5 day turnaround on email support questions. Please include the information from the checklist above, and indicate in the subject field of your message that you are writing regarding the MrSID Macintosh Stand Alone Viewer.

CHAPTER 2: USING THE PRODUCT

Launching MrSID Stand Alone Viewer

To launch the MrSID Stand Alone Viewer, locate the **MrSID Stand Alone Viewer** icon and double click on it.

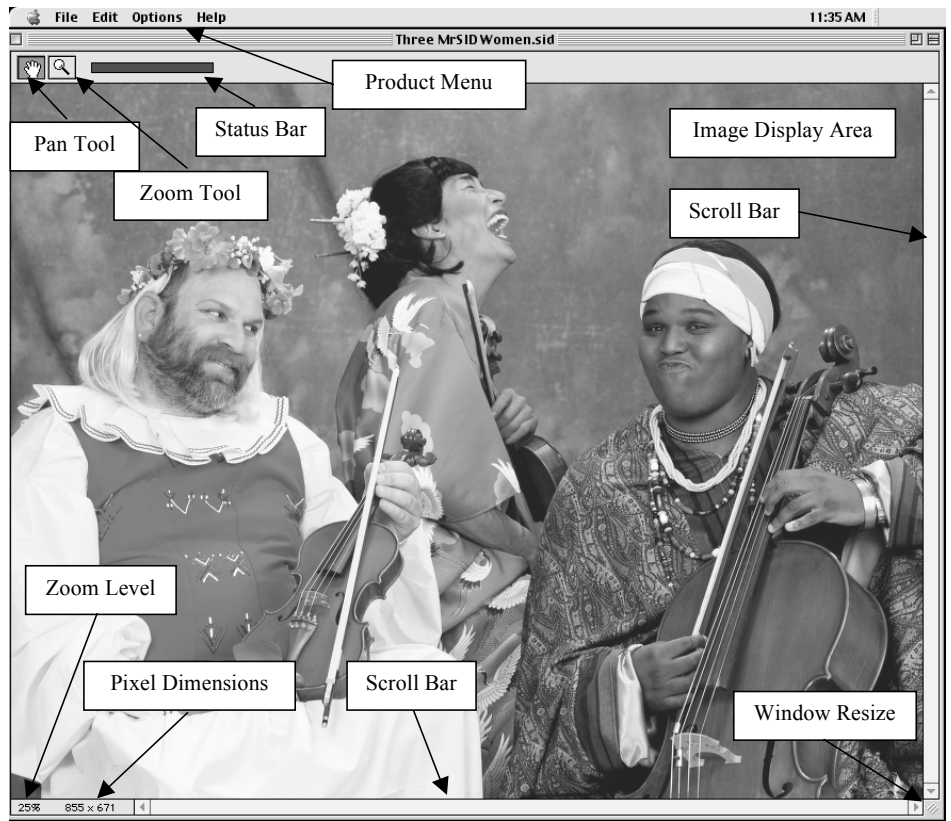
Opening an Image

To open a MrSID image using the MrSID Stand Alone Viewer, select **Open** from the **File** menu. Navigate to a MrSID image and select it. The MrSID image will open at a resolution which allows the entire image to display on your monitor. The MrSID Viewer Image Display Area bounding box will adjust to the dimensions of the displayed image. If the thumbnail view of the image exceeds the available viewing area, the Viewer will display as much of the image as possible with the upper left hand pixel of the image positioned in the upper left hand corner of the viewing window.

When opening multiple MrSID images into the Viewer, each image will be opened in a separate window.

Note: Please remember to click on the window bars to switch between multiple windows.

The image below outlines the key sections of the MrSID Viewer window.



Status Bar	The Status bar shows redraw progress after panning or zooming.
Pan Tool	The Pan button changes the mouse cursor to pan mode. With the cursor in pan mode, click and hold the mouse button; you may drag the image view in any direction. When you release the mouse button, the new location comes into focus.
Zoom Tool	With the cursor in zoom-in mode, click on an area of your image; the selected area will zoom into the image with the display centered on the point you clicked on. By holding the Option key down and clicking on the image, the Zoom tool will zoom out.
Image Display Area	The Image Display Area is the part of the window that displays your MrSID image. The display updates in near-real-time as you pan and zoom.
Scroll Bars	The MrSID Viewer has two scroll bars for panning the image data. The left-right scroll bar is located across the bottom of the image display area. The up-down scroll bar is located across the right side of the image display area.
Scale Level	The Scale Level shows the percentage of the image displayed.
Pixel Dimensions	Indicates the size of the image in pixels.

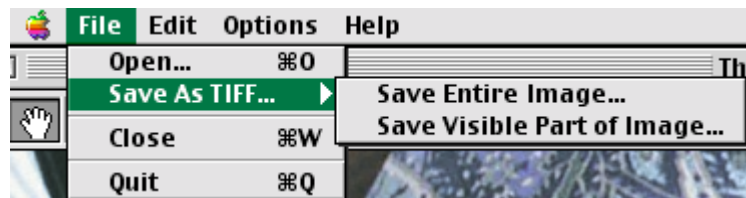
Window Resize	By clicking on the Window Resize area, you can drag the MrSID Viewer Window to the desired display size.
---------------	--

MrSID Stand Alone Viewer Tools

Zooming The **Zoom** tool (magnifying glass icon) lets you zoom in and out of the image. With the cursor in zoom-in mode, click on an area of your image; the selected area will zoom into the image with the display centered on the point you clicked on. You can zoom into the image until you have reached 100% of the image data. To zoom out of the image, hold the **Option** key down and click on the image. The current zoom level is displayed at the bottom left corner of the image window.

Panning The **Pan** button (hand icon) allows you to navigate through the image. With the cursor in pan mode, click and hold the mouse button; you can drag the image data in any direction. When the image is being dragged, it will appear pixelated. When you release the mouse button, however, the new location will come into focus. You can also pan the image by using the image scroll bars found at the bottom and right of the image window.

Save as TIFF The MrSID Stand Alone Viewer allows you to save a MrSID file out as a TIFF. This decompresses the MrSID image or MrSID image area back to the original file size. To save the entire image as a TIFF, zoom in to 100%, and select **Save Entire Image**. When **Save Visible Part of Image** is used, only the area displayed in the Image Window will be saved out as a TIFF.



Printing The MrSID Stand Alone Viewer is intended for opening and viewing MrSID images on the screen. It currently has no printing abilities.

To print MrSID images you may either make a PICT file, or a TIFF file of your image, and print that file.

The PICT picture file can be created and printed without any additional software, but will be a relatively low-resolution “screen shot” of the original image.

A TIFF will generally maintain a higher resolution, but will be larger, will print more slowly, and requires additional software applications you may or may not have.

Creating and printing a PICT picture file:

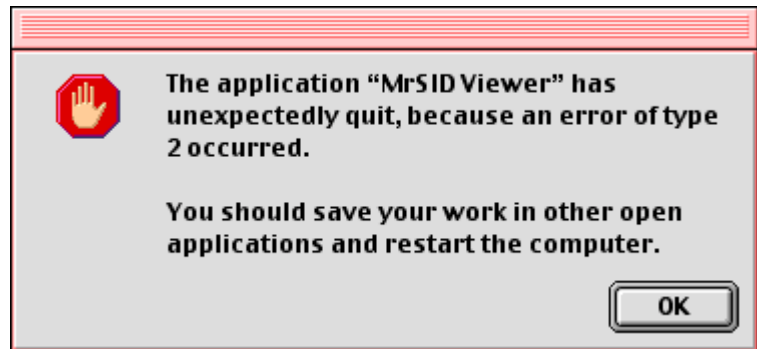
1. Press the **Command, Shift, Caps Lock** and **4** keys on the keyboard, all at once. The cursor will change into a bulls-eye pattern.
2. Click the bulls-eye cursor anywhere in the MrSID Stand Alone Viewer window.

3. The image in the window will be saved as a PICT file at the top level of your Mac HD.
4. Double-click on the PICT file to open it in SimpleText.
5. Select **Print** from the **File** menu to print the image.
6. See the “taking pictures of your screen” section of the Apple Macintosh manual for more information.

Creating and printing a TIFF file:

1. See the instructions above for saving as a TIFF.
2. Open the TIFF image in an application (such as Adobe Photoshop) that supports the TIFF format.
3. Use that application’s printing functions to print the image.

1. When you have a number of images are opened in the MrSID Viewer and you run out of resources, the MrSID Viewer will display an error 2 message and quit. Allocate more memory to MrSID and relaunch the program.



2. To save a copy of the entire image, at its original decompressed size, you must view the image at 100% and then choose **File / Save as TIFF / Save Entire Image**. If you are viewing the image at a size other than 100%, and choose to **Save Entire Image**, the currently-viewed zoom level will be saved instead of the image's original decompressed size.
3. If you drag the a MrSID file onto the **MrSID Stand Alone Viewer** icon and it does not automatically launch, you are experiencing a Macintosh resource issue. To correct this, rebuild your desktop by holding the **Command** and **Option** keys down and restarting your computer. After you have rebuilt your desktop, you should be able to drag and drop a MrSID image onto the Viewer icon with no problem.
4. When the MrSID Stand Alone Viewer is low on resources, an error message will display indicating, "Sorry, an error occurred. This file was possibly not a MrSID file." If you receive this message, first check to ensure the file is a MrSID file—if it is, you have run out of memory. Quit the application and allocate more memory to the Viewer.
5. When an image is opened and you resize the window or pan the image using the scroll bars, the **Status Bar** does not appear.
6. If the arrow keys are used for zooming or scrolling, the image will both shift and zoom. The Stand Alone Viewer was designed to be navigated using the mouse.
7. When an image is zoomed to a point where either the width or height is greater than 32,767 pixels, the scroll bar becomes inactive and scrolling and panning are disabled. This occurs because the Macintosh default maximum value for a scroll bar and the maximum pixel value for any rectangle coordinate is 32,767.
8. When an image is zoomed to a point where either the width or height is greater than 32,767 pixels, and then zoomed back out, the image will re-orient itself in the viewer to the upper left-hand coordinates of the image.

CONTACTING LIZARDTECH

If you have any questions regarding your MrSID viewing or encoding product, please do not hesitate to contact us.

LizardTech, Inc.
The National Building
1008 Western Ave • Second Floor • Seattle, WA 98104
Phone 206-652-5211 • Fax 206-652-0880
<http://www.lizardtech.com>
techsupport@lizardtech.com
©1999 LizardTech Incorporated. All rights reserved.

LizardTech, the LizardTech logo, and MrSID are registered trademarks; and the Portable Image Format, Seamless Wavelet Compression, Selective Decompression, Imaging Environment, and Pixel Database are trademarks of LizardTech, Inc.

Apple, Mac OS and Macintosh are trademarks of Apple Computer, Inc. registered in the U.S. and other countries. All other trademarks are the property of their respective owners.

No part of this document may be reproduced or transmitted by any means without permission from the copyright holder.

MrSID Mac Standalone Viewer User Guide 0120002.0