



Determination of the $\delta^{15}\text{N}$ and $\delta^{18}\text{O}$ of Nitrate in Water; RSIL Lab Code 2900

Chapter 17 of
Section C, Stable Isotope-Ratio Methods
Book 10, Methods of the Reston Stable Isotope
Laboratory

Techniques and Methods 10–C17

U.S. Department of the Interior
U.S. Geological Survey

This page left blank intentionally.

Determination of the $\delta^{15}\text{N}$ and $\delta^{18}\text{O}$ of Nitrate in Water; RSIL Lab Code 2900

By Tyler B. Coplen, Haiping Qi, Kinga Révész, Karen Casciotti, and Janet E. Hannon

Chapter 17 of
Section C, Stable Isotope-Ratio Methods
**Book 10, Methods of the Reston Stable Isotope
Laboratory**

Edited by Kinga Révész and Tyler B. Coplen

Techniques and Methods 10–C17

**U.S. Department of the Interior
U.S. Geological Survey**

U.S. Department of the Interior
KEN SALAZAR, Secretary

U.S. Geological Survey
Marcia K. McNutt, Director

U.S. Geological Survey, Reston, Virginia: 2012
Version 1.0, 2007
Version 1.1, 2012

For sale by U.S. Geological Survey, Information Services
Box 25286, Denver Federal Center
Denver, CO 80225

For more information about the USGS and its products:
Telephone: 1-888-ASK-USGS
World Wide Web: <http://www.usgs.gov/>

Any use of trade, product, or firm names in this publication is for descriptive purposes only and does not imply endorsement by the U.S. Government.

Although this report is in the public domain, permission must be secured from the individual copyright owners to reproduce any copyrighted material contained within this report.

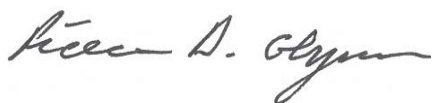
Suggested citation:

Coplen, T.B., Qi, Haiping, Révész, Kinga, Casciotti, Karen, and Hannon, J.E., 2012, Determination of the $\delta^{15}\text{N}$ and $\delta^{18}\text{O}$ of nitrate in water; RSIL lab code 2900, chap. 17 of *Stable isotope-ratio methods*, sec. C of Révész, Kinga, and Coplen, T.B. eds., *Methods of the Reston Stable Isotope Laboratory* (slightly revised from version 1.0 released in 2007): U.S. Geological Survey Techniques and Methods, book 10, 35 p., available only at <http://pubs.usgs.gov/tm/2006/tm10c17/>. (Supersedes version 1.0 released in 2007.)

Foreword

The Reston Stable Isotope Laboratory (RSIL) provides stable isotope analyses on a routine basis for a large user community within the U.S. Geological Survey (USGS) and elsewhere. The RSIL also serves the USGS National Research Program (NRP) through its project on Stable Isotope Fractionation in Hydrologic Processes. The NRP conducts basic and problem-oriented hydrologic research in support of the mission of the USGS. The stable isotope project conducts research on the use of isotope-ratio measurements in studies of water resources and environmental quality. One objective of this project is to develop new techniques for isotopic analysis of hydrogen, nitrogen, oxygen, carbon, and sulfur in environmental samples. New analytical techniques expand the range of tools available for studying the movement of those elements in hydrologic and biogeochemical systems. Another objective of the project is to test new applications of isotope measurements in specific field settings. Field studies of isotope behavior have contributed to understanding water-supply sustainability, groundwater/surface-water interactions, paleoclimate history, biologic cycling of nutrients, groundwater contamination, and natural remediation. This project also contributes to the improvement of measurement science and the development of isotope databases.

Book 10 of the Techniques and Methods Series of the USGS contains detailed descriptions of methods of the RSIL, including routine analytical methods called standard operating procedures (SOPs), along with safety guidelines, maintenance procedures, and other information about the operation of the RSIL. Section C of book 10 contains the SOPs for a variety of methods to measure stable isotope ratios, each of which constitutes a chapter. Each chapter is limited to a narrow field of subject matter to permit flexibility in revision as the need arises.



Pierre Glynn
Chief, Branch of Regional Research, Eastern Region

This page left blank intentionally.

Contents

Foreword.....	iii
Summary of Procedure.....	1
Reporting Units and Operational Range.....	1
Reference Materials and Documentation.....	2
Reference Materials Used, Storage Requirements, and Shelf Life.....	2
Documentation.....	3
Labware, Instrumentation, and Reagents.....	3
Sample Collection, Preparation, Analysis, Retention Times, and Disposal.....	5
Sample Containers, Preservation, and Handling Requirements.....	5
Sample Preparation and Time Requirements.....	6
Performing the Analysis and Time Requirements.....	6
Problematic Samples.....	7
Interferences.....	7
Troubleshooting and Bench Notes.....	8
Maintenance and Maintenance Records.....	8
Sample Retention Time and Disposal.....	8
Data Acquisition, Processing, Evaluation, Quality Control, and Quality Assurance.....	9
Laboratory Information Management System for Light Stable Isotope (LIMS-LSI).....	9
Quality Control (QC) Samples.....	9
Acceptance Criteria for All QC Samples.....	9
Corrective Action Requirements.....	10
Responsible Parties for All QA/QC Functions for Procedures Covered in RSIL SOPs.....	10
Data Management and Records.....	10
Health, Safety, and Waste-Disposal Information.....	10
Applicable Health and (or) Safety Issues.....	10
Personal Protection.....	10
Electrical Hazards.....	10
Chemical Hazards.....	11
Gas Cylinder Handling.....	11
Biological Hazards.....	11
Specific Waste-Disposal Requirements.....	11
Revision History.....	12
References Cited.....	14
Appendix A. Step-by-Step Procedure to Log-In Samples to LIMS-LSI.....	15
Appendix B. Step-by-Step Procedure to Print a Template and a Samples-to-Be-Analyzed List.....	16
Template.....	16
Appendix C. Step-by-Step Preparation Procedure for Nitrogen Isotopic Analysis of Nitrate by Bacterial Denitrification.....	18
Making the Plates.....	18
Preparing the Tryptic Soy Broth (TSB).....	18
Testing Bacteria for Incomplete Conversion of Nitrate.....	19
Harvesting the Bacteria—Concentrating Culture by Centrifugation.....	20
Adding Concentrated Cell Culture to Sample Vial and Purging Headspace and Adding Samples.....	20
Appendix D. Step-by-Step Procedure to Add Sample Information to Sequence Table.....	31
Appendix E. Step-by-Step Procedure to Transfer Data to LIMS-LSI, to Transfer Data to Back-Up Computer, and to Reevaluate Old Data.....	32
Appendix F. Step-by-Step Procedure to Determine and Apply Correction Factors and Evaluate Data.....	33

Appendix G. Daily Check List	34
Appendix H. Step-by-Step Procedure to Report Data.....	35

Figures

1. Schematic of Modified Finnigan MAT (now Thermo Scientific) GasBench 2 Inlet System.	4
2. Schematic of a continuous flow isotope-ratio mass spectrometer (CF-IRMS) (modified from Clark and Fritz, 1997).....	5
B-1. Sample list generated by LIMS.....	16
C-1. Tryptic soy broth (TSB), with KNO_3 , prepared, mixed in 9-L bottle (yellow liquid) and divided into 500-g aliquots.	21
C-2. Autoclaved for 60 minutes at 120 °C.....	21
C-3. Top view of 580-mL bottles with media ready to be autoclaved.	22
C-4. Tryptic Soy broth (TSB) without KNO_3 , prepared with 100-mL aliquots in 125-mL serum bottles.	22
C-5. Selecting a separate colony from the plate using a sterile flamed loop.	23
C-6. Selected colony is shown.....	23
C-7. Selected colony transferred to labeled tube containing 5 mL of TSB.....	24
C-8. Shaker showing 5 mL of culture before injection and showing previously prepared 580-mL bottles injected with bacteria.	24
C-9. A bottle of nitrate-free bacterial culture ready for use.	25
C-10. Centrifuge with four 250-mL bottles.....	25
C-11. Twenty-milliliter sample vial containing 3 mL of concentrated cell culture.	26
C-12. Mechanical crimper.....	26
C-13. PTFE/Aluminum-lined septa with aluminum crimps.....	27
C-14. Empty vial showing placement of vent needle.....	27
C-15. Manifold showing helium purging of 32 vials.	28
C-16. Loading vial with sample.....	28
C-17. Aluminum tray with inverted sample vials.	29
C-18. Finnigan MAT GasBench 2.	29
C-19. Sample tray with 32 vials and ¼-inch-thick aluminum plate to secure vials.....	30

Conversion Factors

Multiply	By	To Obtain
Length		
millimeter (mm)	0.03937	inch
centimeter (cm)	0.3937	inch
meter (m)	3.281	foot
Volume		
microliter (μL)	0.0610210^{-3}	cubic inch
milliliter (mL)	0.06102	cubic inch
cubic centimeter (cm^3)	0.06102	cubic inch
Mass		
nanogram (ng) = 10^{-3} μg	3.527×10^{-11}	ounce
microgram (μg) = 10^{-3} mg	3.527×10^{-8}	ounce
milligram (mg) = 10^{-3} g	3.527×10^{-5}	ounce
gram (g) = 10^{-3} (kg)	3.527×10^{-2}	ounce
kilogram = 10^3 g; 10^6 mg; 10^9 μg ; 10^{12} ng	2.205	pound
Density		
gram per cubic centimeter (g/cm^3)	0.5780	ounce per cubic inch
Temperature		
Celsius ($^{\circ}\text{C}$)	$^{\circ}\text{F} = 9/5 (^{\circ}\text{C}) + 32$	Fahrenheit ($^{\circ}\text{F}$)

Acronyms and Abbreviations

ANSI	American National Standards Institute
CF-IRMS	continuous flow isotope-ratio mass spectrometer
cm	centimeter
DIW	deionized water
g	gram
h	hour
HDPE	high-density polyethylene
IRMS	isotope-ratio mass spectrometer
LIMS-LSI	Laboratory Information Management System for Light Stable Isotopes
MSDS	Material Safety Data Sheets
mg	milligram
mg/L	milligram per liter
min	minute
mL	milliliter
mL/min	milliliter per minute
mm	millimeter
mm/s	millimeter per second
mM	millimolar
nmol	nanomole
NED	N-(1-naphthyl)ethylenediamine dihydrochloride)
NFPA	National Fire Protection Association
NWQL	National Water Quality Laboratory (USGS)
per mil, ‰	one part in one thousand parts, with value 10^{-3}
pF	picofarad
QA	quality assurance
QC	quality control
QC/QA	quality control/quality assurance
RSIL	Reston Stable Isotope Laboratory
SLAP	Standard Light Antarctic Precipitation
SOP	standard operating procedure
std	international measurement standard
TSA	tryptic soy agar
TSB	tryptic soy broth
USGS	U.S. Geological Survey
VSMOW	Vienna Standard Mean Ocean Water
µg	microgram
µM	micromolar

Symbols

Ω	ohm
<	less than
>	greater than
≤	less than or equal

Determination of the $\delta^{15}\text{N}$ and $\delta^{18}\text{O}$ of Nitrate in Water; RSIL Lab Code 2900

By Tyler B. Coplen¹, Haiping Qi¹, Kinga Révész¹, Karen Casciotti², and Janet E. Hannon¹

Summary of Procedure

The purpose of the Reston Stable Isotope Laboratory (RSIL) lab code 2900 is to determine the $\delta^{15}\text{N}$ and $\delta^{18}\text{O}$ of nitrate (NO_3^-) in water. The $\delta^{15}\text{N}$ and $\delta^{18}\text{O}$ of the dissolved NO_3^- are analyzed by converting the NO_3^- to nitrous oxide (N_2O), which serves as the analyte for mass spectrometry. A culture of denitrifying bacteria is used in the enzymatic conversion of the NO_3^- to N_2O , which follows the pathway shown in equation 1:



Because the bacteria *Pseudomonas aureofaciens* lack N_2O reductive activity, the reaction stops at N_2O , unlike the typical denitrification reaction that goes to N_2 . After several hours, the conversion is complete, and the N_2O is extracted from the vial, separated from volatile organic vapor and water vapor by an automated -65°C isopropanol-slush trap, a Nafion drier, a CO_2 and water removal unit (Costech #021020 carbon dioxide absorbent with $\text{Mg}(\text{ClO}_4)_2$), and trapped in a small-volume trap immersed in liquid nitrogen with a modified Finnigan MAT (now Thermo Scientific) GasBench 2 introduction system. After the N_2O is released, it is further purified by gas chromatography before introduction to the isotope-ratio mass spectrometer (IRMS). The IRMS is a Thermo Scientific Delta V Plus continuous flow IRMS (CF-IRMS). It has a universal triple collector, consisting of two wide cups with a narrow cup in the middle; it is capable of simultaneously measuring mass/charge (m/z) of the N_2O molecule 44, 45, and 46. The ion beams from these m/z values are as follows: $m/z = 44 = \text{N}_2\text{O} = {}^{14}\text{N}^{14}\text{N}^{16}\text{O}$; $m/z = 45 = \text{N}_2\text{O} = {}^{14}\text{N}^{15}\text{N}^{16}\text{O}$ or ${}^{14}\text{N}^{14}\text{N}^{17}\text{O}$; $m/z = 46 = \text{N}_2\text{O} = {}^{14}\text{N}^{14}\text{N}^{18}\text{O}$. The ${}^{17}\text{O}$ contributions to the m/z 44 and m/z 45 ion beams are accounted for before $\delta^{15}\text{N}$ values are reported.

Reporting Units and Operational Range

Variations in stable isotope ratios typically are small. Stable isotope ratios commonly are measured and expressed as the relative difference in the ratio of the number of the less abundant isotope (usually the heavy isotope) to the number of the more abundant isotope (usually the light isotope) of a sample with respect to the measurement standard, std (Coplen, 2011). This relative difference is designated $\delta^i\text{E}$, which is a shortened form of $\delta({}^i\text{E}/\text{E})$ or $\delta({}^i\text{E})$, and is defined according to equation 2 (Coplen, 2011):

$$\delta^i\text{E} = \delta({}^i\text{E}) = \delta({}^i\text{E}/{}^j\text{E}) = \frac{N({}^i\text{E})_{\text{P}}/N({}^j\text{E})_{\text{P}} - N({}^i\text{E})_{\text{std}}/N({}^j\text{E})_{\text{std}}}{N({}^i\text{E})_{\text{std}}/N({}^j\text{E})_{\text{std}}} \quad (2)$$

¹ U.S. Geological Survey, Reston Stable Isotope Laboratory, Reston, Virginia 20192

² Stanford University, Department of Environmental Earth System Science, 397 Panama Mall, California 94305-2210

where $N({}^i\text{E})_p$ and $N({}^j\text{E})_p$ are the numbers of the two isotopes ${}^i\text{E}$ and ${}^j\text{E}$ of element E in specimen P and equivalent parameters follow for the international measurement standard, “std.” A positive $\delta^i\text{E}$ value indicates that the specimen is enriched in the heavy isotope, ${}^i\text{E}$, relative to the std. A negative $\delta^i\text{E}$ value indicates that the specimen is depleted in the heavy isotope, ${}^i\text{E}$, relative to the std. For stable nitrogen isotope–amount ratios, $\delta^{15}\text{N}$ is defined as follows:

$$\delta^{15}\text{N} = \delta({}^{15}\text{N}) = \delta({}^{15}\text{N}/{}^{14}\text{N}) = \frac{N({}^{15}\text{N})_p/N({}^{14}\text{N})_p - N({}^{15}\text{N})_{\text{std}}/N({}^{14}\text{N})_{\text{std}}}{N({}^{15}\text{N})_{\text{std}}/N({}^{14}\text{N})_{\text{std}}} \quad (3)$$

For stable oxygen isotope–amount ratios, $\delta^{18}\text{O}$ is defined as follows:

$$\delta^{18}\text{O} = \delta({}^{18}\text{O}) = \delta({}^{18}\text{O}/{}^{16}\text{O}) = \frac{N({}^{18}\text{O})_p/N({}^{16}\text{O})_p - N({}^{18}\text{O})_{\text{std}}/N({}^{16}\text{O})_{\text{std}}}{N({}^{18}\text{O})_{\text{std}}/N({}^{16}\text{O})_{\text{std}}} \quad (4)$$

The primary reference material for relative nitrogen isotope-ratio measurements ($\delta^{15}\text{N}$) is atmospheric nitrogen gas (N_2), which is widespread and homogeneous and, by convention, has a $\delta^{15}\text{N}$ consensus value of 0 (Mariotti, 1983). The primary reference material for relative oxygen isotope-ratio measurements ($\delta^{18}\text{O}$) is Vienna Standard Mean Ocean Water (VSMOW), which by convention has a consensus value of 0 (Gonfiantini, 1978; Coplen, 1996). By interspersing internationally distributed isotopic reference materials with accepted δ values among unknown samples, the δ values can be determined on normalized $\delta^{15}\text{N}$ and $\delta^{18}\text{O}$ scales. The $\delta^{15}\text{N}$ scale is determined by analyzing reference materials IAEA-N-1 and USGS32, which have assigned values of +0.43 and +180 ‰, respectively (Böhlke and Coplen, 1995). The $\delta^{18}\text{O}$ scale is determined by analyzing reference materials VSMOW and Standard Light Antarctic Precipitation (SLAP), which have consensus values of 0 and –55.5 ‰, respectively. The $\delta^{15}\text{N}$ or $\delta^{18}\text{O}$ measurements are made with a CF-IRMS, which alternately measures the isotope ratios of the sample N_2O gas and one or more injections of the “working reference” N_2O gas. Values of $\delta^{15}\text{N}$ and $\delta^{18}\text{O}$ typically are reported in parts per thousand (‰).

The system was tested by analyzing pure inorganic samples (potassium and sodium nitrates). The routine analysis requires 0.28 $\mu\text{g N}$; however, the system is capable of analyzing samples as small as 0.03 microgram (μg) nitrogen in one sample aliquot. The $\delta^{15}\text{N}$ values of reference materials ranged from approximately –1.8 ‰ to +180 ‰, which covers much of the range of isotopic composition of natural samples. The $\delta^{18}\text{O}$ ranged from approximately –28 ‰ to +57 ‰, which covers much of the range of isotopic composition of natural samples. No memory effect was observed. The uncertainties of precision and accuracy were less than ± 0.25 ‰ and less than ± 0.5 ‰ for the $\delta^{15}\text{N}$ and $\delta^{18}\text{O}$ measurements, respectively.

Reference Materials and Documentation

Reference Materials Used, Storage Requirements, and Shelf Life

Internationally distributed reference materials used in the RSIL are solid nitrogen-bearing materials, which have a wide range of isotopic composition. In the measurement of $\delta^{15}\text{N}$, USGS34 potassium nitrate (KNO_3) with a $\delta^{15}\text{N}$ value of –1.8 ‰ (Böhlke and others, 2003) and a USGS32 KNO_3 with a $\delta^{15}\text{N}$ value of

+180 ‰ (Böhlke and others, 1993) are used. For $\delta^{18}\text{O}$ measurement, samples are referenced using USGS34 with a $\delta^{18}\text{O}_{\text{VSMOW-SLAP}}$ value of -27.9 ‰ and USGS35 sodium nitrate (NaNO_3) with a $\delta^{18}\text{O}_{\text{VSMOW-SLAP}}$ value of $+57.5$ ‰ (Böhlke and others, 2003). The USGS35 reference has a nonterrestrial $n(^{18}\text{O})/n(^{17}\text{O})$ ratio; therefore, its $\delta^{15}\text{N}$ value should not be used as a reference for this method.

All of these reference materials are stored in the RSIL at room temperature in glass bottles capped with Teflon-coated or cone-shaped caps to keep moisture out. Their shelf life is indefinite.

Primary stocks of 20-millimolar (mM) reference nitrates are prepared by dissolving solid references, and they are stored in a refrigerator at 5 °C. The 20-micromolar (μM) secondary working stock solutions are prepared every 1 to 2 months, by diluting the primary stocks. These 20- μM working stocks are also stored in a refrigerator between uses and are analyzed along with the samples in amounts identical to that of the samples analyzed in a particular batch.

Documentation

All calibration results are stored in the Laboratory Information Management System for Light Stable Isotopes (LIMS-LSI) (Coplen, 2000) under sample identifiers N-7, N-34, and N-35. All daily sample process templates are saved in a binder.

Labware, Instrumentation, and Reagents

Preparatory labware and apparatus include beakers, watch glasses, 580-milliliters (mL) glass serum bottles, Petri dishes, flasks, a torch, sterile plastic test tubes, spreading loop, a laboratory shaker, freezers, a refrigerator, an autoclave, and a tabletop centrifuge.

The analytical apparatus consists of three different units: (1) an automated sample extraction and analysis system, (2) IRMS, and (3) computer software. The automated sample extraction and analysis system is a modified and improved version (Coplen and others, 2004) of the Finnigan MAT GasBench 2 (fig. 1), first described by Sigman and others (2001) and by Casciotti and others (2002).

The automated sample extraction and analysis unit is constructed to hold 32 samples and is furnished with a CTC Analytical CombiPAL robotic sampling arm by which the sample ultimately is sent to the IRMS through a volatile organic vapor and water removal unit (an automated -65 °C isopropanol-slush trap), a water removal unit (Nafion drier), CO_2 and water removal unit (Costech #021020 carbon dioxide absorbent and $\text{Mg}(\text{ClO}_4)_2$ /Ascarite trap), a cryogenic trap, a GC column, another water removal unit (Nafion drier), and an open split. To eliminate the need for an automatic liquid-nitrogen-trap filler, the stroke of the trap of the Finnigan MAT GasBench 2 was increased from 25 centimeter (cm) to 40 cm by replacing the SMC model C85KN20-250 piston with a model C85KN20-400 piston. The liquid nitrogen dewar of the Finnigan MAT GasBench 2 was replaced by one with an inner diameter of 9.5 cm and an inner depth of 49 cm, which held liquid nitrogen for 20 h. The CTC CombiPAL autosampler is fitted with a LEAP Technologies, Inc. headspace sampler (P/N PAL. VENTTOOL). Helium enters the sample vial through a 17-cm-long 22s-gauge side-hole inlet needle (Hamilton #17305). Helium and sample gas exit the sample vial through a 22-gauge sidehole outlet needle. Bending of the inlet needle during septum penetration is minimized by using a 22s-gauge needle and by reducing the Z-axis motor speed of the CombiPAL to 500 millimeters per second (mm/s). The helium inlet needle is held by a VICI bulkhead-reducing union (ZBRU1.5) mounted in a 1-mL CombiPAL syringe holder. The lower needle guide of the CombiPAL was lowered 4 cm by adding a pair of 4-cm stainless steel extenders. The Finnigan MAT sample holder was replaced with a 32-hole VT32-20 CombiPAL sample holder, which was screwed to the base of the CombiPAL. Because the friction of the needles in the vial septum is sufficiently high to pull vials with samples out of the sample holder, a 32-hole (2.222-cm diameter holes), 6.3-millimeter (mm)-thick aluminum plate was positioned over the vials and held down by screws extending from the sample holder. The CTC Analytical CombiPAL autosampler allows separate helium inflow (25 milliliters

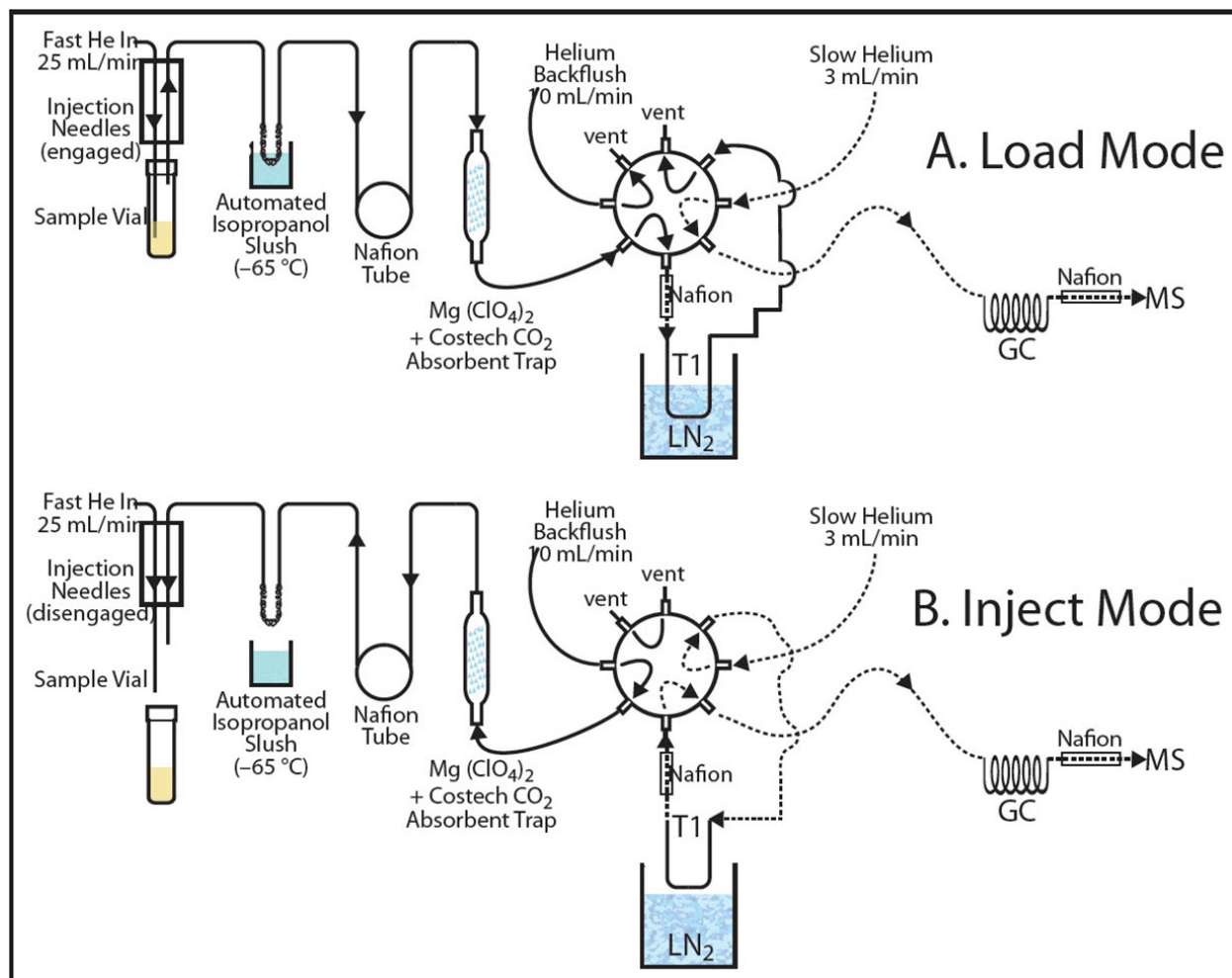


Figure 1. Schematic of Modified Finnigan MAT (now Thermo Scientific) GasBench 2 Inlet System.

per minute (mL/min)) to purge the entire vial and a helium + N₂O outflow for sample collection. The purged sample flows through a Nafion water removal tube and is collected for 13 minutes (min) in the cryogenic trap (95 × 0.16-cm-outside-diameter, stainless steel) submerged in liquid N₂ (-192 °C). By removing the trap from liquid N₂, the sample warms to room temperature, and the sublimed sample is released to the GC (PorapLOT Q CP7551, held at room temperature) under a helium flow rate of 3 mL/min through a Nafion drier, an open split that limits the flow to 0.3 mL/min, and ultimately into the IRMS. To ensure sufficient separation of CO₂ and N₂O, the original 25-m PorapLOT Q CP7551 GC column has been extended to 37.5 m.

The IRMS is a Thermo Scientific Delta V Plus CF-IRMS (fig. 2). The fundamental principle of the CF-IRMS technique is that a carrier gas transports the analyte through an initial stage of online chemistry for conversion to a form acceptable by the IRMS (Brenna and others, 1997), in this case N₂O gas. This is an automated system generating online, high-precision δ values. In the IRMS, gas molecules are ionized in a source by electrons emitted from a hot filament. The ions are accelerated into an analyzer, forming an ion beam, are separated in a magnetic field, and then collected in Faraday-cup collectors. The ion-beam intensities are measured with electrometers. This IRMS has a universal triple collector, consisting of two wide cups with a narrow cup in the middle; it is capable of simultaneously measuring m/z 44, 45, and 46. The resistor-capacitor combination on the electrometers used to measure these masses are as follows:

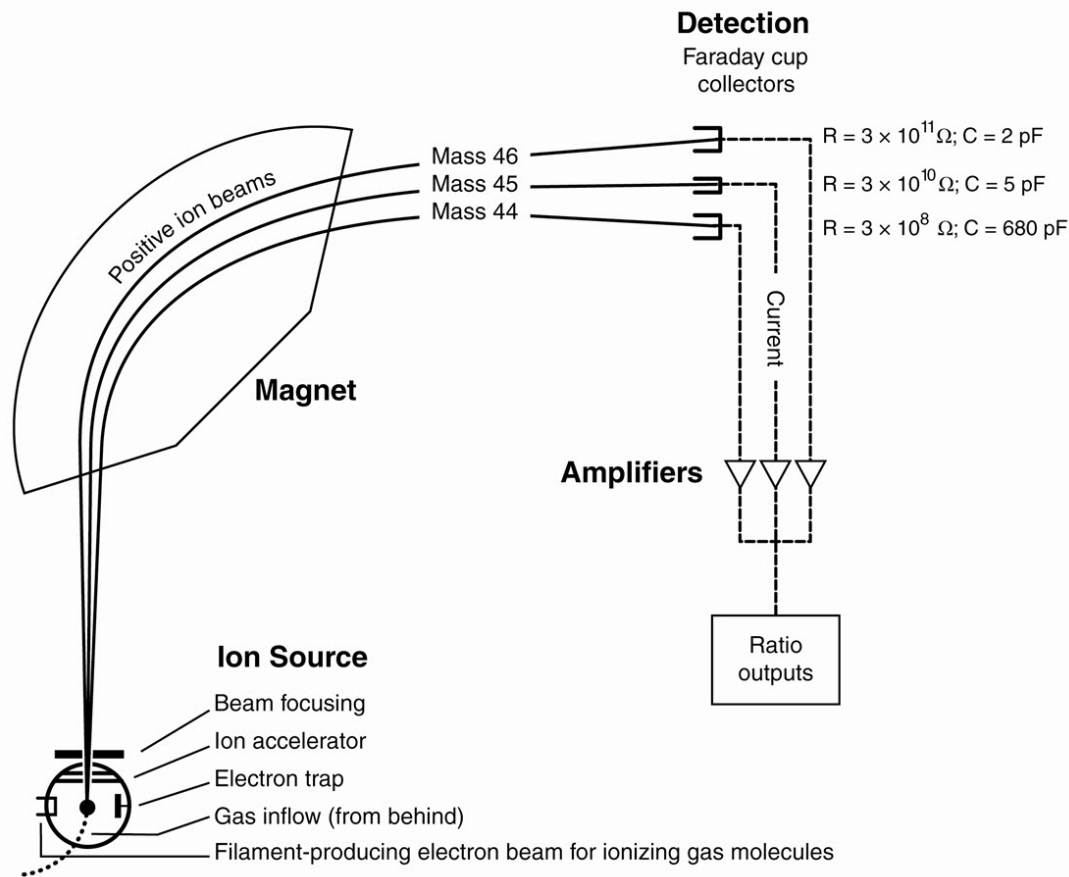


Figure 2. Schematic of a continuous flow isotope-ratio mass spectrometer (CF-IRMS) (modified from Clark and Fritz, 1997).

3×10^8 ohms (Ω) and 680 picofarads (pF) for cup 1, $3 \times 10^{10} \Omega$ and 5 pF for cup 2, and $3 \times 10^{11} \Omega$ and 2 pF for cup 3.

The Thermo Scientific ISODAT 2.0 software (1) controls the Finnigan MAT GasBench 2 preparation system, (2) operates the IRMS, (3) acquires data from the IRMS, and (4) calculates delta values.

Sample Collection, Preparation, Analysis, Retention Times, and Disposal

Sample Containers, Preservation, and Handling Requirements

Each sample is collected in a maximum size of 4 oz (125 mL) amber, high-density polyethylene (HDPE) (Q33FLD or Q405FLD in USGS's One-Stop Shopping online store) bottle, untreated, shipped capped by a Polyseal cap, and stored frozen or at 4 °C to minimize microbiological activity. The bottles are labeled with isotopes whose concentrations are to be determined with the respective laboratory code or schedule number. The sample should be filtered through a 0.25- μ filter; the bottle should be filled with

sample with the water level at a maximum of three quarters of the volume of the bottle to allow for expansion during freezing. The sample size required will depend on NO_3^- concentration. A minimum total amount of 0.002 milligram (mg) of NO_3^- as nitrogen is required; therefore, the minimum sample concentration should be 0.03 milligram per liter (mg/L) as N. The submitter must provide the concentration of NO_3^- in the sample to the RSIL before the sample can be analyzed. Obtaining National Water Quality Laboratory (NWQL) analysis LC 1975 or LC 1979 and reporting concentration to the RSIL is fully satisfactory.

Sample Preparation and Time Requirements

Sample preparation involves logging samples into the LIMS-LSI (see appendix A). The logging-in procedure involves logging samples in batches to LIMS-LSI that could contain from 1 to 100 samples per batch (also called a project), printing labels for each sample, and printing a summary project report. Each sample label contains the Field ID (the identifier by which the sample submitter knows each sample) and the unique RSIL Lab ID assigned by the LIMS-LSI. The summary project report is inserted into a three-ring binder titled “Samples in Progress.”

A sample work-order sheet is created by LIMS-LSI by printing a “Template” and a “Samples to be Analyzed” form; step-by-step procedures are given in appendix B. The time requirement for sample preparation is about 1 to 5 days.

Performing the Analysis and Time Requirements

A denitrifier culture is prepared by cultivating the appropriate strain of *Pseudomonas aureofaciens* for $\delta^{15}\text{N}$ determination. Using tryptic soy broth (TSB) medium amended with 10-mM NO_3^- and 15-mM NH_4^+ , the bacteria are first inoculated in a starter tube that contains 5 mL of culture medium. The bacteria are allowed to grow overnight, and then transferred into autoclaved 580-mL serum bottles containing 500 mL of medium.

The bacteria (5- to 10-day-old cultures) are harvested by centrifugation in four 200-mL centrifuge bottles and resuspended with a total of 100 mL of new medium that contains no NO_3^- to achieve a 5-fold increase in concentration. Several drops of antifoaming agent are added to the 100-mL concentrated cells. The 3-mL concentrated cells are dispensed into thirty-two 20-mL headspace vials. The vials are sealed with a Teflon-aluminum-lined silicone septum and purged with helium for 1 h. At this point, the TSB in the vials should be NO_3^- and nitrite (NO_2^-) free, and the headspace helium should be N_2O free.

An amount between 1 and 10 mL of a sample containing dissolved NO_3^- is added to the prepared vials to achieve a constant amount of analyte N_2O , typically 10 to 20 nanomoles (nmol). For this reason, the sample submitter must provide the NO_3^- concentrations of each sample. After the samples are injected, the sample vials are stored upside down for at least 2 h to minimize leakage through the septum while NO_3^- is converted to N_2O . The step-by-step procedure is given in appendix C.

After a 2-h conversion, the 32 vials that typically have 20 unknown samples and 12 references, among which are 4 vials of N-7 (USGS32; KNO_3), 4 vials of N-34 (USGS34; KNO_3), and 4 vials of N-35 (USGS35), are analyzed. N-7 and N-34 are used to calibrate $\delta^{15}\text{N}$ values, and N-34 and N-35 are used to calibrate $\delta^{18}\text{O}$ values. The sample vials are loaded into a 32-position aluminum tray that is accessed by the autosampler. The process is automated and controlled by the ISODAT 2.0 mass spectrometer program; therefore, it requires entering sample identifications into the “Sequence Table” in ISODAT 2.0, choosing appropriate “Methods” (the method that controls the CTC Analytical CombiPAL system and the method that controls the analysis, both of which were set up previously in the system), and starting sequence acquisition. The step-by-step procedure is given in appendix D.

For each sample analysis, the vial is purged by the autosampler for 13 min using helium gas at a flow rate of 30 mL/min. The flow from the exit needle is directed through a -65°C isopropanol-slush trap, a Nafion drier, followed by $\text{Mg}(\text{ClO}_4)_2$ and Costech #021020 carbon dioxide absorbent to remove

volatile organic vapor, water, and CO₂ from the gas stream before trapping N₂O under liquid nitrogen. The N₂O is then released from the liquid nitrogen trap and is passed through a PoraPLOT Q CP7551 GC column and on to the IRMS.

After the analyses are completed, the data are exported from the ISODAT 2.0 database to a removable disc or “memory stick” (see appendix E) and imported to LIMS-LSI and transferred to a Data Back-Up Computer. Final daily correction factors are determined (see appendix F) based on the daily analyses of reference materials using equations 5 and 6, which are represented with numerical values:

$$+180 \text{ ‰} = m \times \delta^{15}\text{N}_{\text{USGS32/workingrefgas}} + b \quad (5)$$

$$-1.8 \text{ ‰} = m \times \delta^{15}\text{N}_{\text{USGS34/workingrefgas}} + b \quad (6)$$

The values +180 ‰ and –1.8 ‰ are the assigned values of the two international reference materials, USGS32 and USGS34, respectively. The $\delta^{15}\text{N}$ values in equations 5 and 6 are the mean daily delta values of the respective international reference materials relative to the working reference gas; b is the additive correction factor, and m is the expansion coefficient correction factor. Oxygen isotopic correction factors are determined in the same way; however, the values of the oxygen isotopic internationally distributed reference materials should be used, and the $\delta^{18}\text{O}$ values in the equations would be the daily delta values of the respective internationally distributed reference materials relative to the working reference gas. When two or more reference materials with different isotopic compositions are analyzed, the correction for sample blank does not need to be applied if the magnitude of the blank in the samples and reference materials is identical. However, if only a single reference material is analyzed, only one-point calibration is possible; therefore, a blank correction must be applied.

If replicates do not agree within acceptable tolerances, they are analyzed until acceptable statistics are achieved. The computerized LIMS-LSI will not release data until the statistics are acceptable. The time requirement for performing the analyses described earlier is a minimum of 2 days if the bacterial culture is already prepared.

The systematic procedure is listed in the “Lab Procedures” binder. The supervisor should review suggested changes before they are adopted.

Problematic Samples

Problematic samples include (1) samples that have concentrations less than 14 µg of nitrogen per liter, (2) samples that have a mixture of NO₃[–] and NO₂[–], because this technique does not distinguish between these two forms of nitrogen, and (3) samples that have been poisoned with mercury chloride or other preservatives. Samples that have anomalous $n(^{17}\text{O})/n(^{16}\text{O})$ ratios can be problematic for $\delta^{15}\text{N}$ analysis because the $\delta^{15}\text{N}$ calculation assumes that the fractionation of oxygen isotopes in the NO₃[–] is mass dependent, that is, that $\delta^{17}\text{O} = 0.52 \times \delta^{18}\text{O}$. For samples containing atmospheric NO₃[–] that have excess ¹⁷O, the bacterial method may overestimate the $\delta^{15}\text{N}$ values by as much as 1 to 2 ‰. Therefore, for samples that are expected to contain more than 20-percent atmospheric NO₃[–], users should contact the RSIL for methods to quantify $\delta^{17}\text{O}$ values and determine accurate $\delta^{15}\text{N}$ values.

Interferences

Because CO₂ has the same m/z values as N₂O, it poses an analytical interference if it is not completely removed from the sample stream. Ammonia (NH₄⁺) and dissolved organic nitrogen do not cause interference. To ensure a sufficient separation of CO₂ from N₂O, the original 25-m PoraPLOT Q CP7551 GC column has been extended to 37.5 m in length.

When analyzing KOH- or NaOH-preserved samples with a typical pH of about 11, if weaker or older bacteria are used, the N₂O yield and isotopic results can be affected because very basic sample solutions can kill the denitrifier bacteria, especially for samples containing very small amounts of nitrate. In such a case, several milliliters of raw sample are needed.

When analyzing very dirty samples (microbial rich), such as landfill samples, sewage contaminated samples, etc, if the samples are only filtered by 0.45- μ m filters, the small microbes (<0.45 μ M) can compete with denitrifier bacteria. Consequently, unreliable N₂O yield and isotopic results can be observed.

Troubleshooting and Bench Notes

Bacterial growth during the initial culture phase is monitored by the amount of NO₃⁻ remaining in the medium solution. In a healthy culture, NO₂⁻ is completely consumed in 5 to 7 days. If NO₃⁻ is not completely consumed in 7 days, the culture is discarded.

Maintenance and Maintenance Records

Stocks of bacteria are in a -80 °C freezer. New plates are streaked from that stock and transferred on agar plates. After 3 to 5 days, the second plates are streaked by individual colonies from the first plates. Likewise, the third-generation plates can be streaked from the second plates. The working cultures are inoculated only from the second and third-generation plates. The history of all working cultures is kept in a culture log, with the bacterial strain, date of inoculation, source of inoculum, and date of harvest.

The isopropanol-slush trap is replaced every few weeks. The Nafion driers require replacement every 8 to 10 months. The Mg(ClO₄)₂ and Costech #021020 carbon dioxide absorbent is repacked every 1 to 2 months. The GC is baked out (150 °C overnight) as needed.

The IRMS requires a daily check (see appendix G). A logbook is kept for each IRMS with notes concerning maintenance checks, normal settings, problems, and repairs.

Routine maintenance is necessary for the upkeep of the IRMS vacuum system, including (1) checking the pump performance from time to time, (2) changing the pump oil, and (3) changing the oil cartridge in each turbomolecular pump at 6-month intervals. Pump conditions, such as date of oil changes, problems, and repairs, are listed in the pump database (file path C:\RSIL\vacuum pumps).

Maintenance of ISODAT 2.0 includes importing/transferring results from the ISODAT 2.0 database to the LIMS-LSI computer hard disk and the Data Back-Up computer hard disk (appendix E).

Sample Retention Time and Disposal

Samples are retained in the RSIL for at least 4 months after reporting data. Samples are then discarded unless the submitter has requested that the samples be returned.

The ISODAT sample files from the IRMS computer are kept indefinitely on two different hard disks of the Data Back-Up computer. Paper reports are kept for a few weeks. Analytical results from the IRMS are exported to LIMS-LSI and kept indefinitely. No data are entered by hand, and no manual calculations are performed on the data.

Data Acquisition, Processing, Evaluation, Quality Control, and Quality Assurance

Laboratory Information Management System for Light Stable Isotope (LIMS-LSI)

In the RSIL, the LIMS-LSI (Coplen, 2000) is used for data processing and evaluation. This system is a database program capable of (1) storing information about samples, (2) storing the results of mass spectrometric delta values of samples after importing from the ISODAT database, (3) calculating analytical results using standardized algorithms stored in a database, (4) normalizing delta values using isotopic reference materials, and (5) generating templates to facilitate loading of samples. With this system, the following are ensured: (1) quality assurance (QA), (2) laboratory efficiency, (3) reduction of workload and errors owing to the elimination of retyping of data by laboratory personnel, and (4) a decrease of errors in data reported to sample submitters. This database provides a complete record of information on how laboratory reference materials have been analyzed and provides a record of what correction factors have been used as an audit trail for the RSIL.

Quality Control (QC) Samples

Samples are prepared and analyzed in batches—a maximum of 32 daily. Each batch contains approximately 12 vials of 3 reference materials; one pair depleted in ^{15}N and ^{18}O and another pair enriched in ^{15}N and ^{18}O . All of these reference materials serve as QC samples.

Daily, the analyst (1) examines the computer printouts for indications of analytical problems, (2) determines the daily additive and expansion correction factors by the LIMS-LSI, and (3) applies correction factors to isotopic data. The values of these correction factors along with the date and range of analysis numbers are recorded manually in the laboratory “GasBench Book” even though the data are already in the LIMS-LSI. After printing the list of isotopic results from the “Table of Samples in Progress,” the analyst reviews the results, determines which samples need to be analyzed a third time to achieve acceptable results (i.e., $\Delta\delta \leq 0.25$ ‰ for $\delta^{15}\text{N}$ and 0.5 ‰ for $\delta^{18}\text{O}$), and puts them back to the template. The final average isotopic values for each QC sample, with dates and analysis numbers, are recorded manually in the laboratory “GasBench book” even though the data are already in LIMS-LSI.

Acceptance Criteria for All QC Samples

Acceptance criteria for QC samples are the same as acceptance criteria for the samples. The rules are as follows:

- If standard deviation is less than or equal to 0.25 ‰ for $\delta^{15}\text{N}$ and less than or equal to 0.5 ‰ for $\delta^{18}\text{O}$, use mean delta.
- If there are three or more analyses, delete the outlier and recalculate.
- If standard deviation of this recalculation is less than or equal to 0.25 ‰ for $\delta^{15}\text{N}$ and less than or equal to 0.5 ‰ for $\delta^{18}\text{O}$, use the mean from this recalculation.
- If none of the above is the case, the result is not acceptable and corrective action is required.

The RSIL estimates the expanded uncertainty ($U = 2\mu$) of $\delta^{15}\text{N}$ and $\delta^{18}\text{O}$ measurement results. The expanded uncertainty provides an envelope that represents a 95-percent probability of encompassing the true value that has been determined from the aggregation of measurement results over a period of time. The expanded uncertainty can be determined using the guide to the expression of uncertainty (Joint Committee for Guides in Metrology, Working Group 1 (JCGM/WG1), 2010). The application of expanded uncertainty to the reporting of stable isotope measurements is discussed by Coplen and others

(2006). The estimated expanded uncertainty of $\delta^{15}\text{N}$ measurement results for samples with nitrate concentrations of at least 0.06 mg/L as nitrogen is ± 0.5 ‰ unless otherwise specified, and this value is conservative. The estimated expanded uncertainty of $\delta^{18}\text{O}$ measurement results for samples with nitrate concentrations of at least 0.06 mg/L as nitrogen is ± 0.5 ‰ unless otherwise specified, and this value is conservative. If any given sample were resubmitted to the RSIL for nitrogen and oxygen isotopic analysis, the measured values would fall within the uncertainty bounds of the previous results more than 95 percent of the time. The $\delta^{15}\text{N}$ and $\delta^{18}\text{O}$ uncertainties for nitrate samples with concentrations less than 0.06 mg/L as nitrogen are both ± 1.0 ‰ unless otherwise specified.

Corrective Action Requirements

If an analyst finds any problem with the daily reference-sample data, the analyst contacts the supervisor. The troubleshooting process requires an evaluation and reanalysis of certain samples to identify the origin of the problem.

If samples do not give satisfactory results after three or more separate analyses, the analyst averages all the data and reports the mean value. Such analytical results are indicated with a comment, and the customer will be advised by e-mail or other means.

Responsible Parties for All QA/QC Functions for Procedures Covered in RSIL SOPs

The analyst, with supervisor approval, is responsible for qualifying data and notifying customers.

Data Management and Records

In addition to evaluating daily sample analyses, every week, an analyst evaluates the data project-by-project, reports results to the customers, and files final project data reports in the laboratory “Correspondence” binder (appendix H).

Health, Safety, and Waste-Disposal Information

Applicable Health and (or) Safety Issues

Personal Protection

Safety glasses and protective gloves are recommended whenever samples are handled, especially when the samples are of biological origin. For other precautions and safety procedures, consult the Material Safety Data Sheets (MSDS); they are on file in the laboratory and at the URL <http://www.ilpi.com/msds/#Manufacturers>. This URL provides links to the MSDSs of most chemical companies.

Electrical Hazards

Electrical systems must conform to the National Electric Code, National Fire Protection Association Code (NFPA 70–1971), and the American National Standards Institute (ANSI) Code (C1–1971). For more information, consult the U.S. Geological Survey’s *Safety and Environmental Health Handbook* (U.S. Geological Survey, 2002, sec. 4–4.1).

Shock hazards exist inside the instruments. Only an authorized service representative or an individual with training in electronic repair must remove panels or circuit boards where voltages are greater than 20 volts. The instruments require a third-wire protective grounding conductor. Three-to-two wire adapters are unsafe for these instruments.

Chemical Hazards

Use protective gloves to handle all chemicals.

Gas Cylinder Handling

Compressed gas cylinders must be handled and stored according to the U.S. Geological Survey's *Safety and Environmental Health Handbook* (U.S. Geological Survey, 2002, sec. 4–4.5.1). Each cylinder must be (1) carefully inspected when received; (2) securely fastened at all times with an approved chain assembly or belt; (3) capped at all times when not in use; (4) capped when transported; (5) transported only by a properly designed vehicle (hand truck); and (6) stored separately with other full, empty, flammable, or oxidizing tanks of gas, as appropriate.

Biological Hazards

The bacteria used in this method are not a significant health hazard. However, infection may occur if bacterial culture comes in contact with open wounds or if needles that have been used with the bacteria puncture the skin. If contact with bacterial culture occurs, wash the affected area thoroughly with water and use an alcohol swab (70-percent EtOH) to cleanse the affected area.

The used or old bacterial cultures should be killed by autoclaving at 120 °C for 30 min before sink disposal.

Needles that have been used with the bacteria should be placed in a “Sharps” container, sealed, and disposed of when the container is full. The container should be labeled “biological hazard” and disposed of in the same manner in which hazardous chemicals are disposed.

Specific Waste-Disposal Requirements

The used or old bacterial culture should be killed by autoclaving at 120 °C for 30 min before disposal in the sink.

Revision History

Publication Series and Series Number: Techniques and Methods 10–C17 (Book 10, Section C, Chapter 17)

Publication Title: Determination of the $\delta^{15}\text{N}$ and $\delta^{18}\text{O}$ of Nitrate in Water; RSIL Lab Code 2900

Publication Authorship: Coplen, Tyler B., Qi, Haiping, Révész, Kinga, Casciotti, Karen, and Hannon, Janet E.

Version 1.0, released 2007

Version 1.1, released 2012

Summary of Revised Product Components

Component	Description	Last Revised In Publication Version	Date of Last Revision
Title	Replaced $\delta(^{15}\text{N}/^{14}\text{N})$ by $\delta^{15}\text{N}$ and $\delta(^{18}\text{O}/^{16}\text{O})$ by $\delta^{18}\text{O}$ to be in accordance with recommendations of the Commission on Isotopic Abundances and Atomic Weights of the International Union of Pure and Applied Chemistry.	1.1	July 2012
Authorship	Tyler B. Coplen, Haiping Qi, and Janet E. Hannon added as coauthors.	1.1	July 2012
Summary of procedure	Updated text to reflect improved method of Coplen and others (2004) and new instrumentation.	1.1	July 2012
Reporting units and operational range	Updated text to reflect expression of delta values with number ratios.	1.1	July 2012
Reference materials and documentation	Updated text to reflect improved method of Coplen and others (2004).	1.1	July 2012
Labware, instrumentation, and reagents	Updated text to reflect improved method of Coplen and others (2004) and new instrumentation.	1.1	July 2012
Sample collection, preparation, analysis, retention times, and disposal	Updated text to reflect improved method of Coplen and others (2004) and to reflect that samples are no longer submitted through the National Water Quality Laboratory (NWQL).	1.1	July 2012

Data acquisition, processing, evaluation, quality control, and quality assurance	Updated text to reflect improved method of Coplen and others (2004) and to reflect that samples are no longer submitted through the National Water Quality Laboratory (NWQL).	1.1	July 2012
Health, safety, and waste-disposal information	Updated text to reflect improved method of Coplen and others (2004).	1.1	July 2012
References cited	Added four references.	1.1	July 2012
Appendix A	Updated text to reflect that samples are no longer submitted through the National Water Quality Laboratory (NWQL).	1.1	July 2012
Appendix B	Updated text to reflect improved method of Coplen and others (2004).	1.1	July 2012
Appendix C	Updated text to reflect improved method of Coplen and others (2004).	1.1	July 2012
Appendix H	Updated text to reflect that samples are no longer submitted through the National Water Quality Laboratory (NWQL).	1.1	July 2012
Main text footer	Removed from document.	1.1	July 2012

References Cited

- Böhlke, J.K., Gwinn, C.J., and Coplen, T.B., 1993, New reference materials for nitrogen-isotope-ratio measurements: *Geostandards Newsletter*, v. 17, p. 159–164.
- Böhlke, J.K., and Coplen, T.B., 1995, Interlaboratory comparison of reference materials for nitrogen-isotope-ratio measurements, *in* Reference and Intercomparison Materials for Stable Isotopes of Light Elements: Vienna, Austria, International Atomic Energy Agency, IAEA–TECDOC–825, p. 51–66.
- Böhlke, J.K., Mroczkowski, S.J., and Coplen, T.B., 2003, Oxygen isotopes in nitrate: New reference materials for ^{18}O : ^{17}O : ^{16}O measurements and observations on nitrate-water equilibration: *Rapid Communications in Mass Spectrometry*, v. 17, p. 1835–1846.
- Brenna, J.T., Corso, T.N., Tobias, H.J., and Caimi, R.J., 1997, High-precision continuous-flow isotope-ratio mass spectrometry: *Mass Spectrometry Reviews*, v. 16, p. 227–258.
- Casciotti, K.L., Sigman, D.M., Hastings, M., Böhlke, J.K., and Hilkert, Andreas, 2002, Measurement of the oxygen isotopic composition of nitrate in seawater and freshwater using the denitrifier method: *Analytical Chemistry*, v. 74, p. 4905–4912.
- Clark, Ian, and Fritz, Peter, 1997, *Environmental isotopes in hydrogeology*: Boca Raton, Fla., Lewis Publishers, 328 p.
- Coplen, T.B., 1996, New guideline for the reporting of stable hydrogen, carbon and oxygen isotope ratio data: *Geochimica Cosmochimica Acta*, v. 60, p. 36–59.
- Coplen, T.B., 2000, A guide for the laboratory information management system (LIMS) for light stable isotopes—Version 7 and 8: U.S. Geological Survey Open-File Report 00–345, 121 p., accessed April 27, 2012, at <http://water.usgs.gov/software/code/geochemical/lims/doc/ofr00345.pdf>.
- Coplen, T.B., 2011, Guidelines and recommended terms for expression of stable-isotope-ratio and gas-ratio measurement results: *Rapid Communications in Mass Spectrometry*, v. 25, p. 2538–2560, accessed April 27, 2012, at <http://onlinelibrary.wiley.com/doi/10.1002/rcm.5129/abstract>.
- Coplen, T.B., Böhlke, J.K., and Casciotti, K.L., 2004, Using dual-bacterial denitrification to improve $\delta^{15}\text{N}$ determinations of nitrates containing mass-independent ^{17}O : *Rapid Communications in Mass Spectrometry*, v. 18, p. 245–250.
- Coplen, T.B., Brand, W.A., Gehre, Matthias, Gröning, Manfred, Meijer, H.A.J., Toman, Blaza, and Verkouteren, R.M., 2006, New guidelines for $\delta^{13}\text{C}$ measurements: *Analytical Chemistry*, v. 78, no. 7, p. 2439–2441.
- Gonfiantini, R., 1978, The δ -notation and the mass-spectrometric measurement techniques, *in* Gat, J.R., and Gonfiantini, R., eds., *Stable isotope hydrology: deuterium and oxygen-18 in the water cycle*. International Atomic Energy Agency, Technical Report Series No 210, chap. 4. p. 35–85.
- Joint Committee for Guides in Metrology, Working Group 1 (JCGM/WG1), 2010, Evaluation of measurement data—Guide to the expression of uncertainty in measurement (known as the GUM) (2010 corrected version of the first edition of 2008): Joint Committee for Guides in Metrology [publication] JCGM 100:2008, 120 p., accessed July 16, 2012, at <http://www.bipm.org/en/publications/guides/>.
- Mariotti, A., 1983, Atmospheric nitrogen is a reliable standard for natural ^{15}N abundance measurements: *Nature*, v. 303, p. 685–687.
- Sigman, D.M., Casciotti, K.L., Andreani, M., Barford, C., Galanter, M., and Böhlke, J.K., 2001, A bacterial method for the nitrogen isotopic analysis of nitrate in seawater and freshwater: *Analytical Chemistry*, v. 73, p. 4145–4153.
- U.S. Geological Survey, 2002, USGS handbook 445–3–H, *Safety and environmental health handbook*, 435 p.

Appendix A. Step-by-Step Procedure to Log-In Samples to LIMS-LSI

1. For sample submitter:
 - a. Download “Standard Submission Excel Form” or the “QWDATA Compatible Submission Excel Form” from the RSIL Web site at <http://isotopes.usgs.gov/>.
 - b. Fill out the requested sample information.
 - c. Send a diskette or CD and a hard copy along with the samples or e-mail the completed RSIL Excel worksheet to isotopes@usgs.gov.
2. For RSIL personnel:
 - a. Match up information on sample bottles with the submitted “Standard Submission Excel Form” or the “QWDATA Compatible Submission Excel Form.”
 - b. Enter all Standard Submission Excel Form or “QWDATA Compatible Submission Excel Form” information into LIMS-LSI by loading media. Submission date is the date samples are logged in.
 - c. Use “Import a New Project From Excel Submission” in LIMS-LSI to assign G#s.
 - d. Print out one project report and container labels (one for each sample).
 - e. Put a label on each sample bottle and cross-check Field IDs between bottles and Excel worksheet forms.
 - f. Punch holes in the original Excel worksheet and all the project information you have and put in “Samples-in-Progress” binder.

Appendix B. Step-by-Step Procedure to Print a Template and a Samples-to-Be-Analyzed List

Template

1. Use “Create a Sample List -->” in LIMS-LSI (fig. B-1).
2. Select appropriate template and mass spectrometer for GasBench, aureofaciens, and N&O.
3. Design analysis sequence with 32 ports.
4. Click “Create Sample List for Mass Spec.”
5. Add any sample information you want in column “Sample/Extraction Info.”
6. Click “Save and Print.”
7. Insert diskette to receive sample headings.
8. Click “OK.”
9. Exit LIMS-LSI.
10. Write sample amount (mL) needed to be loaded into each vial and write the date that samples should be analyzed on the paper template.

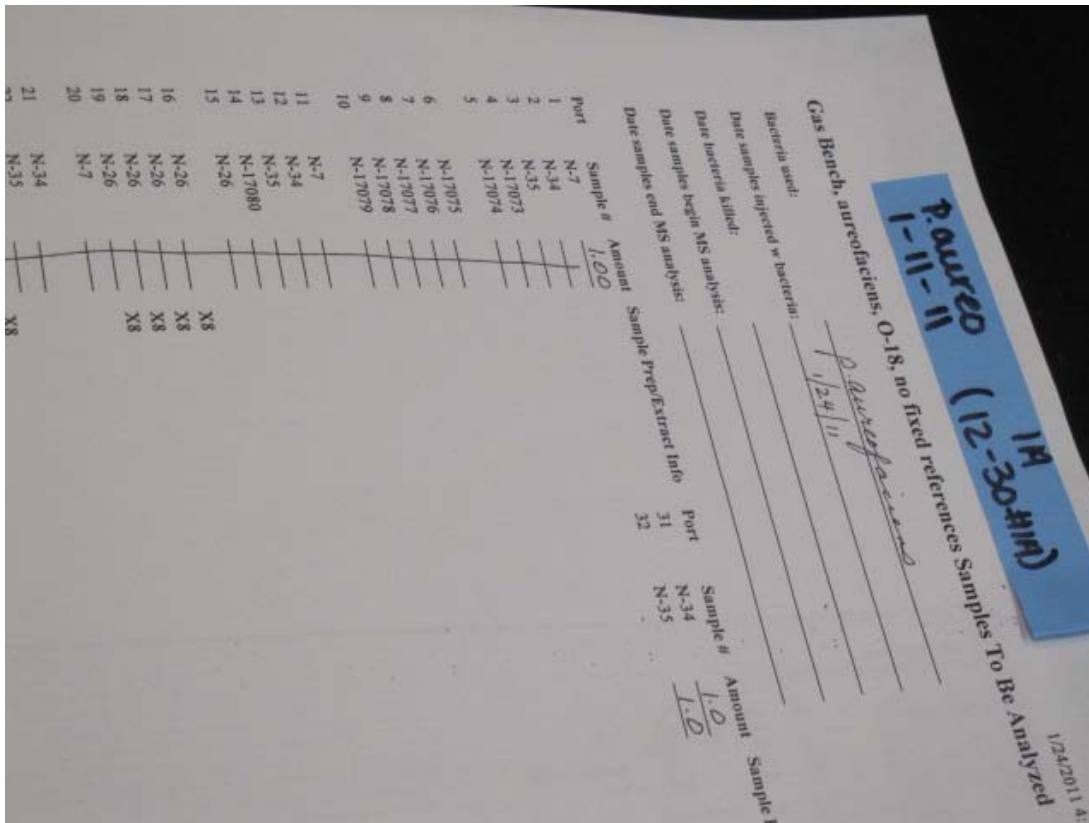


Figure B-1. Sample list generated by LIMS.

Samples to be Analyzed List 10/20/2003 3:54:33 PM
 [N-7, N-34, and N-35 are reference materials]

Port	Sample Number	Amount
1	N-7	
2	N-34	
3	G-70	
4	G-71	
5	G-72	
6	G-73	
7	G-74	
8	G-75	
9	N-34	
10	N-7	
11	G-76	
12	G-77	
13	G-78	
14	G-79	
15	G-80	
16	G-81	
17	G-82	
18	G-83	
19	G-84	
20	N-35	
21	G-85	
22	G-86	
23	G-87	
24	G-88	
25	G-89	
26	G-90	
27	G-91	
28	G-92	
29	G-93	
30	G-94	
31	N-35	
32	N-7	

Appendix C. Step-by-Step Preparation Procedure for Nitrogen Isotopic Analysis of Nitrate by Bacterial Denitrification

Making the Plates

1. Preparing the plates:
 - a. Mix together:
 - i. 23 grams (g) of tryptic soy agar (TSA).
 - ii. 0.5 g of KNO_3 .
 - iii. 500 mL of E-pure or Milli-Q water.
 - b. Autoclave for 30 min at 120 °C.
 - c. Cool ~15 min (until you can handle the flask with a gloved hand).
 - d. Pour into sterile plastic Petri dishes, flaming the lip of the flask every 3 to 4 plates (500 mL of solution should make ~20 plates).
 - e. Allow the plates to solidify overnight.
 - f. Place all plates in a plastic bag. Label the bag with a piece of tape; include type of plates (TSA, plus NO_3^-), today's date, and initials of technician who made the plates.
 - g. Store plates in the refrigerator until use.
2. Streaking the bacteria:
 - a. Remove the small box that contains the small tube of frozen stocks of *Pseudomonas aureofaciens* American, Type Culture Collection (ATCC)13985 from the -80 °C freezer.
 - b. Take bacteria from the frozen stock: Do not wait for the vial to thaw—use a sterile toothpick to scrape a very small amount of bacterial slush from the tube. CLOSE the tube before doing anything else. The frozen stocks are our most important resource.
 - c. Lightly touch the surface of a plate with the toothpick to transfer the bacterial slush. It should form a small puddle.
 - d. Using a flamed loop, spread the puddle by streaking back and forth through it. Flame the loop. Proceed with streaking by crossing trails twice with tracks of the first streak. Flame the loop. Cross trails twice with the second streak and proceed. This plate will be numbered as #1.
 - e. To streak new plates from earlier plates: Using a single colony from #1 plate, streak, flame, streak, flame, streak (as above from frozen stocks). This plate will be numbered as #2.
 - f. Plate labeling:
 - i. Strain (*Pseudomonas aureofaciens*).
 - ii. Plate number.
 - iii. Today's date.
 - iv. Source information in parentheses (“freezer” or date of earlier plate).
 - g. Plates take 3 to 5 days to mature so one will typically go through a round each week.
- h. Keep plate lineages together for ease of organization. Discard old plate lineages when a new #2 plate has matured and is ready to be used for inoculating. If streaking #3s also streak new #1s on the same day.

Preparing the Tryptic Soy Broth (TSB)

1. Wash the 580-mL medium bottles (580-mL bottle with vial neck (23 × 75.5-mm diameter and height, 20-mL volume)):
 - a. Brush and wash inside with Liqui-Nox detergent.
 - b. Rinse with warm water and deionized water (DIW).
 - c. Bake in 200 °C oven overnight.

2. Making the medium: (making 7000 mL of medium and distributing it into fourteen 580-mL serum bottles):
 - a. Mix together (fig. C-1):
 - i. 210 g of DIFCO Tryptic soy broth (TSB).
 - ii. 7.0 g of KNO_3 .
 - iii. 3.5 g of $(\text{NH}_4)_2\text{SO}_4$.
 - iv. 34.3 g of potassium phosphate.
 - b. Add 7000 mL of DIW.
 - c. Transfer the well-homogenized, 500 mL of medium into a 580-mL bottle by peristaltic pump.
 - d. Seal bottles with blue butyl stoppers and aluminum crimp-seals.
 - e. Autoclave for 60 min; the time starts after the autoclave reached 120 °C (figs. C-2 and C-3).
3. Making the NO_3^- -free medium: (making 2000 mL of medium and transferring it into twenty 100-mL serum bottles):
 - a. Mix together:
 - i. 30 g of Tryptic soy broth.
 - ii. 0.5 g of $(\text{NH}_4)_2\text{SO}_4$.
 - iii. 4.9 g of KH_2PO_4 .
 - b. Add 2000 mL of DIW.
 - c. Transfer the well-homogenized, 100-mL volume of NO_3^- -free medium into 160-mL serum bottles by peristaltic pump.
 - d. Autoclave for 60 min; the time starts after the autoclave reaches 120 °C (fig. C-4).
4. Incubating the bacteria:
 - a. Measure 5 mL of autoclaved medium into a sterile plastic test tube.
 - b. Using a well-flamed loop, pick a colony from a #1 or #2 plate (figs. C-5 and C-6).
 - c. Open the tube and touch the end of the loop to the inside of the tube or swish the end of the loop in the broth to transfer the colony. Whichever you do, do it quickly. Get in and out of the bottle as quickly as possible (fig. C-7).
 - d. Label tube with the following information:
 - i. Bacteria strain.
 - ii. Today's date.
 - iii. Source of the inoculum (plate number and date).
 - e. Incubate the tube on a shaker overnight (fig. C-8). This is good for 1 or 2 days.
 - f. Add 5 mL of starting solution to each 580-mL culture bottle and enter each inoculated bottle in the Culture Log, one line per bottle.
 - g. Put the bottles on the shaker, and grow the bacteria for a week.
5. Generally, inoculations will be performed as often as needed to supply a sufficient supply for the following week. These cultures will grow for a week before they are harvested.

Testing Bacteria for Incomplete Conversion of Nitrate

1. Withdraw 1 mL of solution from each 580-mL culture to be harvested.
2. Add 40 μL of sulfanilamide to convert NO_3^- to NO_2^- .
3. Add 40 μL of N-(1-naphthyl) ethylenediamine dihydrochloride (NED), which turns to pink if any NO_2^- is present in the solution.
4. If it turns pink, it indicates that the bacteria has not quantitatively converted NO_3^- to N_2O , and the bottle should not be used until further testing shows no pink coloring. A cloudy culture should be visible after 5 days. When consumption of the NO_3^- is complete, label the bottle as ready for use (fig. C-9).

Harvesting the Bacteria—Concentrating Culture by Centrifugation

1. Evenly distribute 500 mL of culture into four 250-mL centrifuge bottles by weighing.
2. Screw caps on tightly and put the bottles into centrifuge, making sure they balance each other (fig. C-10).
3. Centrifuge the bottles for 15 min at 18 °C and 3800 rpm. (Bacteria should be pelleted on the bottom of the bottle).
4. Discard clear medium supernatant, taking care not to disturb the ring of bacteria.
5. Add 15 mL from a 100-mL, NO_3^- -free medium unit to each centrifuge bottle.
6. Swirl bottles to re-suspend the bacteria and transfer to a sterile 250-mL beaker.
7. Use remaining NO_3^- -free medium for rinsing all four centrifuge bottles, adding the rinse to the 250-mL beaker.
8. Add 10 drops antifoam B solution to the beaker.

Adding Concentrated Cell Culture to Sample Vial and Purging Headspace and Adding Samples

1. Dispense 3 mL of concentrated cell culture into each sample vial (fig. C-11).
2. Using a mechanical crimper (fig. C-12), seal vials with Teflon-aluminum-lined silicone septum inserted into aluminum crimps (fig. C-13).
3. Insert a helium vent needle (1.5-in. long, 25 gauge) into vial (fig. C-14).
4. Insert each vial upside down into helium purging manifold.
5. Purge vials with 3 to 4 psi helium for 1 hour (h) (fig. C-15).
6. Inject a sufficient amount of sample water to produce 5 to 20 nmol N_2O (1 to 10 mL) with an airtight syringe equipped with a 25-gauge needle (fig. C-16). If the amount of water needed is more than 4 mL, insert a venting needle while injecting to avoid over pressurization. Mix well by inverting the vial several times.
7. Turn the vial upside down (fig. C-17) and incubate for 2 h.
8. Samples now are ready to be loaded on the Finnigan MAT GasBench 2 (fig. C-18) for isotope analysis. Loaded samples are shown in fig. C-19.



Figure C-1. Tryptic soy broth (TSB), with KNO₃, prepared, mixed in 9-L bottle (yellow liquid), and divided into 500-g aliquots.



Figure C-2. Autoclaved for 60 minutes at 120 °C.



Figure C-3. Top view of 580-mL bottles with media ready to be autoclaved.



Figure C-4. Tryptic Soy broth (TSB) without KNO_3 , prepared with 100-mL aliquots in 125-mL serum bottles.



Figure C-5. Selecting a separate colony from the plate using a sterile flamed loop.



Figure C-6. Selected colony is shown.



Figure C-7. Selected colony transferred to labeled tube containing 5 mL of TSB.

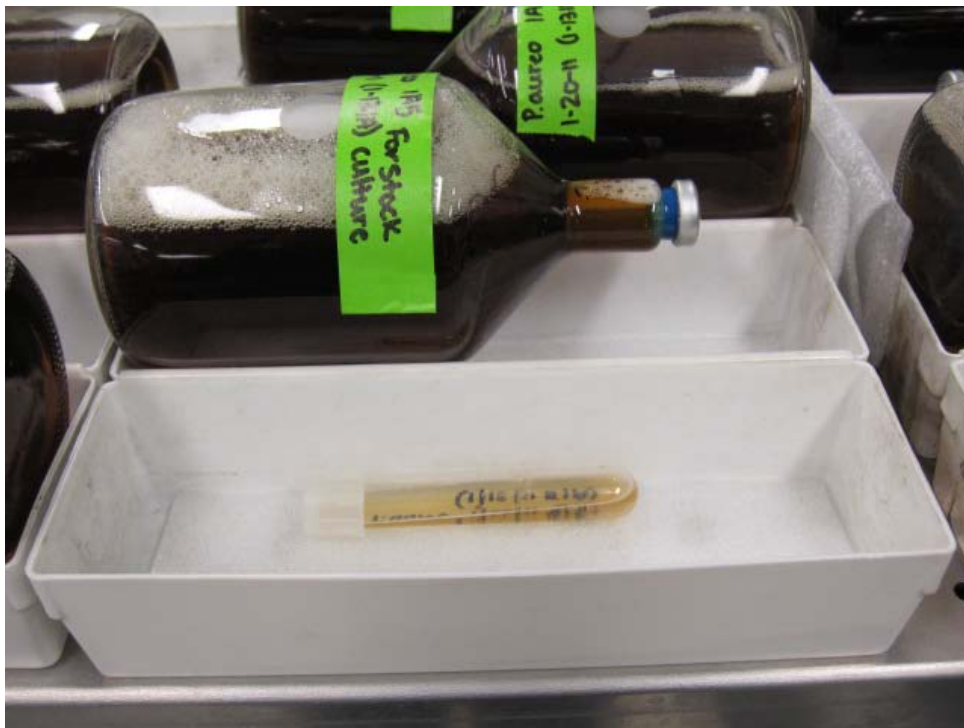


Figure C-8. Shaker showing 5 mL of culture before injection and showing previously prepared 580-mL bottles injected with bacteria.

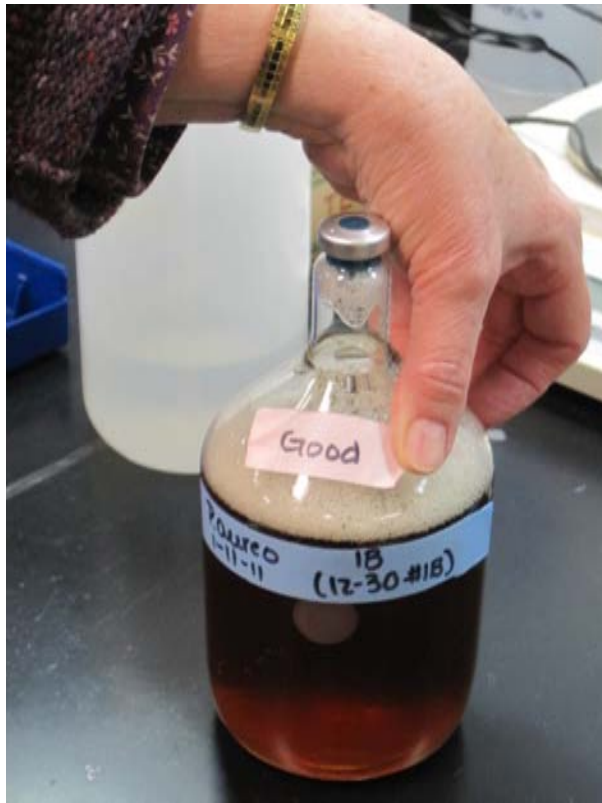


Figure C-9. A bottle of nitrate-free bacterial culture ready for use.



Figure C-10. Centrifuge with four 250-mL bottles.



Figure C-11. Twenty-milliliter sample vial containing 3 mL of concentrated cell culture.



Figure C-12. Mechanical crimper.



Figure C-13. PTFE/Aluminum-lined septa with aluminum crimps.



Figure C-14. Empty vial showing placement of vent needle.

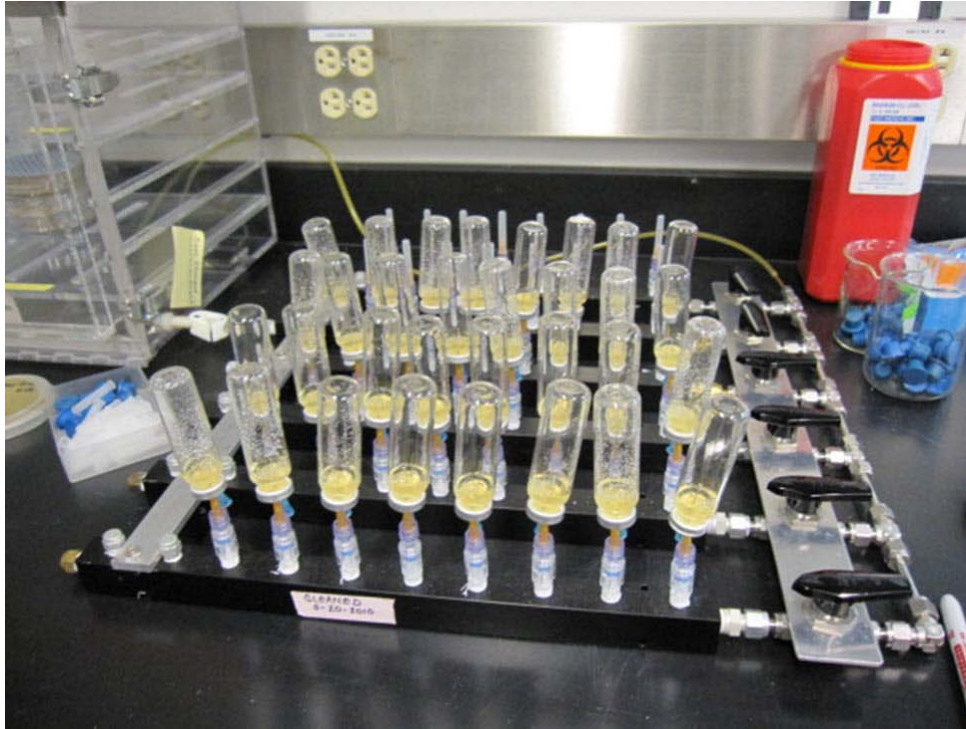


Figure C-15. Manifold showing helium purging of 32 vials.



Figure C-16. Loading vial with sample.



Figure C-17. Aluminum tray with inverted sample vials.

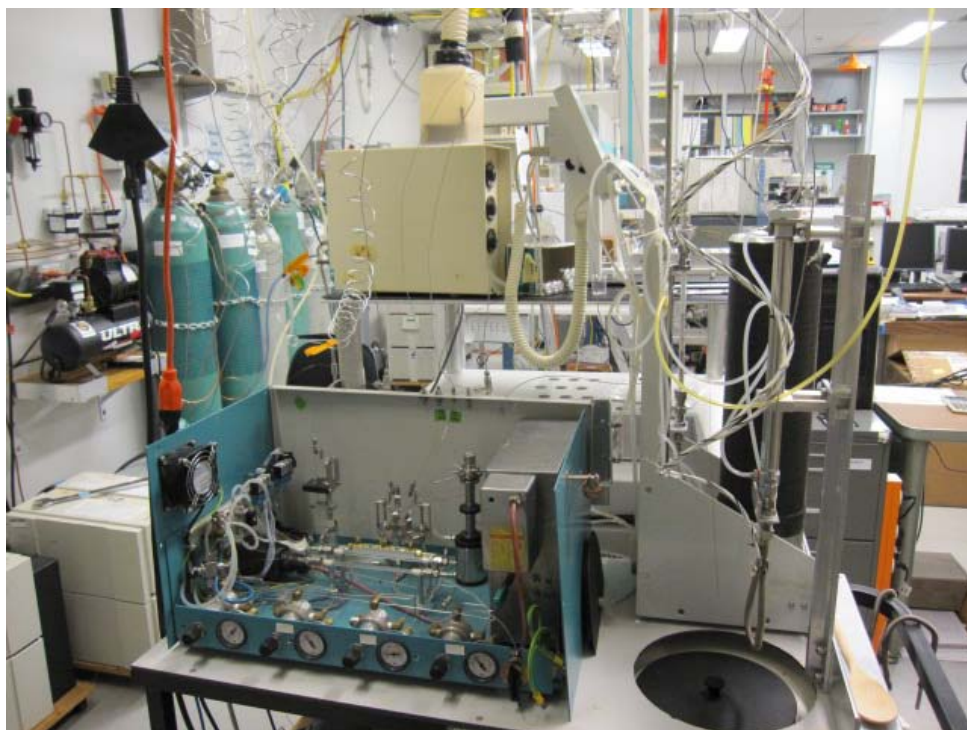


Figure C-18. Finnigan MAT GasBench 2.



Figure C–19. Sample tray with 32 vials and a ¼-inch-thick aluminum plate to secure vials.

Appendix D. Step-by-Step Procedure to Add Sample Information to Sequence Table

1. Insert the diskette with sample headings generated by LIMS-LSI.
2. Open sequence table in Excel.
3. Open “N₂O Sample Sequence File” under the GB configuration.
4. Copy the sequence template from Excel and paste it to sequence table of the mass spectrometer’s data acquisition and control computer.
5. Select the appropriate “method” for each sample.
6. Define a reference line and blank line (as needed).
7. Start.
8. Give Folder Name: Comment.
 - a. Select pre: “Date.”
9. Give File Name: leave it empty.
 - a. Select pre: “Analyzes #.”
 - b. Select post: “Identifier 1.”
 - c. Select: “Print Result.”
10. Click OK.
11. Wait for first sample to be analyzed.

Appendix E. Step-by-Step Procedure to Transfer Data to LIMS-LSI, to Transfer Data to Back-Up Computer, and to Reevaluate Old Data

1. Transfer data to LIMS-LSI:
 - a. Start LIMS.
 - b. Choose "Import Data From Instruments."
 - c. Choose mass spectrometer, for example "H --> Hercules."
 - d. Click "Import."
 - e. Select the file that will be imported.
 - f. Depending upon the mass spectrometer, the user may be given the opportunity to select the columns containing the isotope data. Enter column names as appropriate for the isotope or isotopes to be imported.
 - g. Click "Import." Note: Sample ID, sample weight, Peak Area, Analyses #s are automatically imported to LIMS-LSI.
2. Transfer data to Data Back-Up computer:
 - a. Go to Windows Explorer in the Data Back-Up computer.
 - b. Find the drive where your back ups are stored.
 - c. Choose: "RSIL."
 - d. Choose: "Mass. Spec. Analysis Back Up."
 - e. Choose the mass spectrometer. For example, "H," which stands for "Hercules," a Thermo Scientific Delta V Plus IRMS.
 - f. Under that folder create a new folder. The name of the folder should be the date range of the analyses that one wishes to back up.
 - g. Transfer data to that folder.
 - h. Make back ups every 2 weeks or so, as needed.
3. Reevaluate old data:
 - a. Find your samples in the Data Back-Up computer.
 - b. Transfer data by a memory stick to the computer where a virtual version of ISODAT 2.0 is installed.
 - c. Reevaluate your data.

Appendix F. Step-by-Step Procedure to Determine and Apply Correction Factors and Evaluate Data

1. Open “Apply Data Normalization” in LIMS-LSI.
2. Select instrument and isotope, for example “H (Hercules) for 34S.”
3. Select “Query.”
4. Double click on the last sample analyzed on that day.
5. Evaluate data of the reference materials.
6. Choose “Normalize with all References.”
7. Click “Apply Normalization -->.”
8. Print out correction factor sheet.
9. Report daily reference values and correction factors along with date and range of analysis number to the “EA” binder.
10. Go back to LIMS-LSI main menu by closing open windows.
11. Choose “Print/Save Analyses in Progress”:
 - a. Choose appropriate isotope.
 - b. Choose appropriate prefix (W for water, N for nitrogen, S for sulfur).
 - c. Enter sample ID range from “Samples-to-Be-Analyzed” sheet.
 - d. Click Print.
12. Review results and identify samples that need to be re-analyzed.
13. Add the samples needing analyses to the Samples to Be Analyzed:
 - a. Go back to LIMS-LSI main menu.
 - b. Open “Create a Sample List -->.”
 - c. Select appropriate sample list for the mass spectrometer and the samples that are to be analyzed.
 - d. Find each sample in the “List of samples.”
 - e. Change entry in “Repeats” column from 0 to 1.
 - f. Close Windows and exit LIMS-LSI.

Appendix G. Daily Check List

Analyst in charge: _____ Date: _____

1. Change the working reference gas tank and helium gas tank if the pressure is <500 psi. Order new ones for spares; the reference gas is research grade, helium; the carrier gas is zero grade.
2. Change the Nafion every 10 months, and change the water and CO₂ trap every 1 to 2 months.
3. Replace isopropanol-slush trap daily. Clean the used trap with ethanol and DIW, and dry it in a 150 °C oven.
4. Clean the sample-transfer line (1/32-inch diameter stainless steel tubing) between the needle and the isopropanol-slush trap every 6 months by injecting ethanol and DIW.

THESE ITEMS ARE TO BE CHECKED OFF AS YOU CHECK THEM DAILY!

1. Check the helium and reference gas flow. []
2. Check the background masses. []

Cups	Mass	Intensity (V)	Mass	Intensity (V)	Resistor (Ω)	Capacity (pF)
1	28	0.007		0	3×10^9	680
2	29	0.003	18	1.256	3×10^{10}	5
3	30	0.083	18	6.818	3×10^{11}	2

3. Check the peak center. []
4. Analyze the Ref on/off method 10 times to stabilize the IRMS (STD should be < 0.1 %). []

ConFlo II Pressure Setting N ₂ O (bar)	N ₂ O signal (V) Mass 45 on Cup 2
0.25	0.638
0.50	1.59
0.75 Optimal setting	2.653
1.00	3.921
1.25	5.315
1.50	7.059
1.75	8.778
2.00	>10.8

5. Record the analysis date, the project, the sample submitter, and the mass spectrometer analysis number in the electronic lab-log book (in xls format). Also record the instrument working status.

Appendix H. Step-by-Step Procedure to Report Data

1. Open “Store Samples in Progress” in LIMS-LSI.
2. Choose the appropriate isotope.
3. Choose sample ID range from “Sample in Progress” print out.
4. Store data.
5. Go back to the main menu of LIMS-LSI.
6. Open “Project” and find the appropriate project in the list.
7. Select “Print Report” and check whether the project report contains all the results. If not, search for the missing results in the database.
8. Select “Results,” transfer data in Excel format or (and) text format to a diskette, and report data to customer through e-mail.
9. Click “Print Report” to print a project report and put it in the “Correspondence” binder along with all the other documents in the “Samples In Progress” binder that are related to this project.