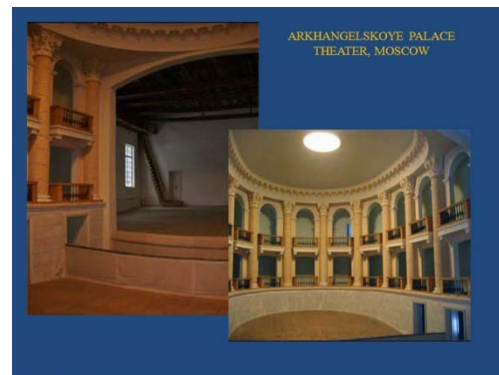
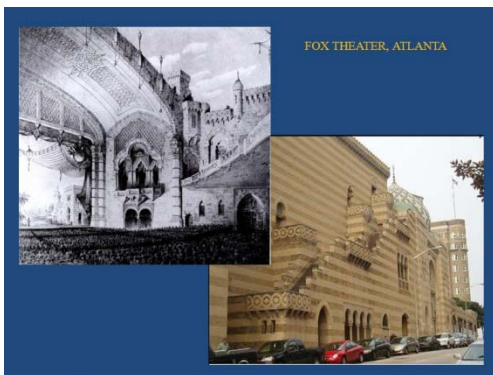


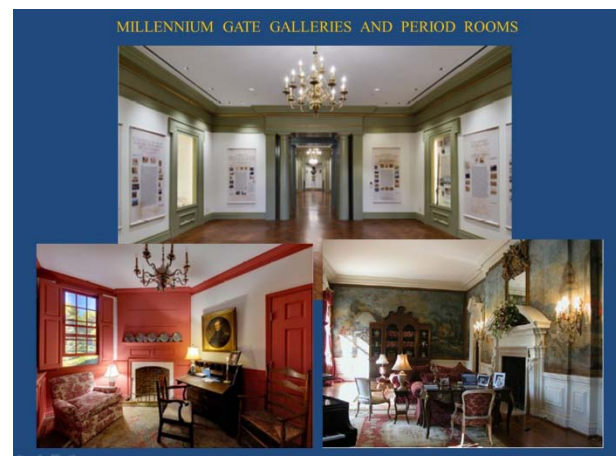
Rodney Mims Cook Jr.
President
National Monuments Foundation

Testimony on “THE PROPOSED DWIGHT D. EISENHOWER MEMORIAL”
March 20, 2012

My name is Rodney Mims Cook Jr. and I am President of the National Monuments Foundation. I appreciate the honor of being invited here to share with you my opinions based on thirty years of experience within the traditional architectural world. The National Monuments Foundation's purpose is to build monuments, museums, parks and civic spaces for the ages which will uplift the communities in which they are built, through a classical approach. The foundation creates self-sustaining destination landmarks of national, historical and aesthetic relevance with a strong focus on interactive technology. We make history cool.



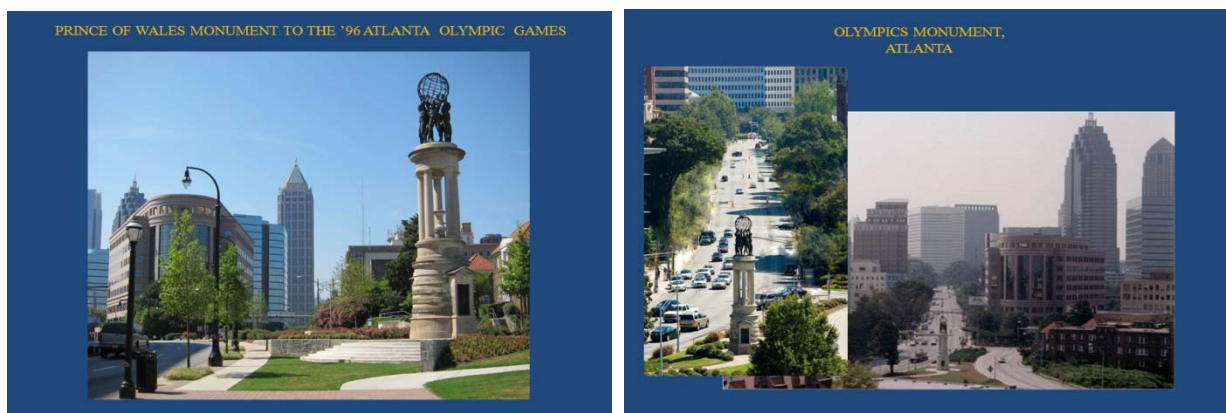
We are among the few organizations that design, build, own, operate and maintain civic assets. I have read that Mr. Gehry thinks there are no great sculptors left in the world. I disagree and a number of great works from various global sculptors are identified in some of our images. We are headquartered in the Millennium Gate Georgia History Museum, a 100-foot tall triumphal arch based on the Arch of Titus in the Roman Forum. This 21 million dollar ensemble is set in a four acre park on a lake in Midtown Atlanta, surrounded by allegorical sculpture.



I was asked by the National Civic Art Society to judge the alternative competition for the Dwight D. Eisenhower Memorial. Having studied Mr. Gehry's design for some time, it was my conclusion that, though Mr. Gehry was a gifted architect, I believed that his style was ill-suited to achieve the monument required to honor as revered and accomplished a person as General Eisenhower. I declined their invitation, indicating that I thought it my patriotic duty to enter the competition instead and to encourage my friends to enter as well. I did so with a years-long colleague of mine, Michael Franck.

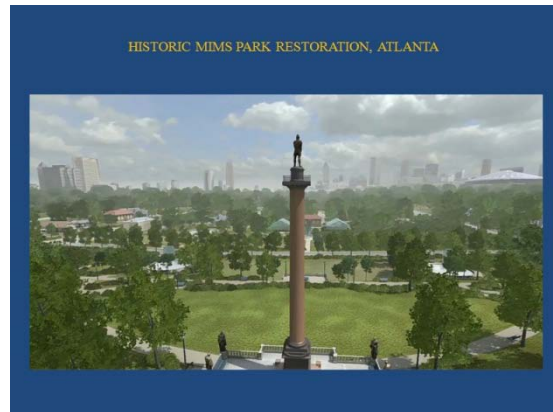


I would like to disclose that my technology companies, Vizerra USA and VIMtrek, through our partner SmartBIM, work in a strategic alliance with Gehry Technology on the use of Building Information Modeling to allow buildings and monuments to be designed, built and maintained in a high standard of energy efficiency. I have enjoyed a friendship with a number of members of the Eisenhower family for years. I am an emeritus board member of the Institute of Classical Architecture and Art, which was a co-sponsor of the alternative competition. Michael Franck and I were among the winners of that competition. As a result of all of these issues, should there be another competition, I will not enter it.

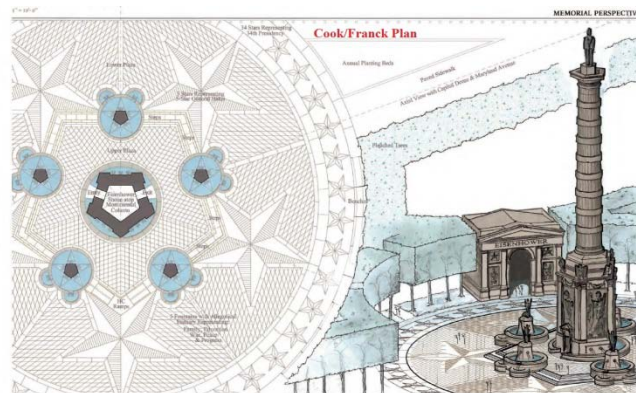
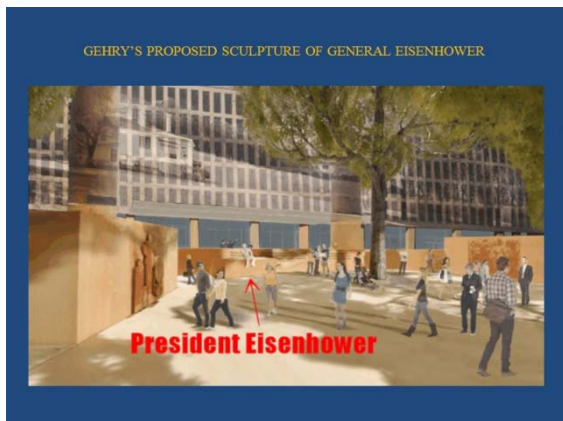


The rules of classicism are hierarchical. Precedent matters and our research of General Eisenhower called for a marshal design. We studied some of the greatest military leaders in history and tradition for the greatest of them was a triumphal column. The tallest ever supports Lord Nelson, in central London, which is 170 feet. Nelson saved England. Eisenhower saved England and Europe and hierarchy calls for a taller column for the General. At 178 feet, it would have been the tallest commemorative column on Earth. Our design placed him in his preferred simple soldier's D-Day uniform. The column is surrounded by 8 bands representing his years in the presidency. The plaza surrounding the column base is circular and contains 34 stars

corresponding to his being the 34th president. There are five allegorical statues atop the fountains surrounding this circular plaza representing Family, Education, Progress, War and Peace. The cost is 51 million dollars.



Cities are very fragile. The Eisenhower Memorial design could successfully achieve a renaissance in this precinct of Washington that was marred by Brutalist style urban renewal in the mid to late 20th century. In a city that is overflowing with green-scapes and parks, this site provides one of the most important urban circumstances to provide Washington her principle successful civic square, as called for by the McMillan Plan. A “theater for the automobile”, which is how Mr. Gehry describes his design, will continue the exodus of inhabitants as soon as they are allowed to leave their Brutalist office workplaces. A design must conform with the 1791 L’Enfant Plan, which was enacted by President Washington, directed by Jefferson, and came to fruition in the 1901-2 Senate Park Improvement Plan (commonly known as the McMillan Plan).



The L’Enfant and McMillan plans are the *fundamental zoning codes* for the city and Monumental Core. No subsequent zoning plan put forth by NPS, NCPC, or any other agency has ever replaced them. The Gehry plan, having gone through the GSA Design Excellence Program, has attempted to compromise this rule. The memorial commission and Gehry intend to redefine what it means to build a memorial, far exceeding the congressional mandate to build a memorial to honor Eisenhower’s accomplishments.

NEWINGTON-CROSEY EXHIBITION GALLERY, NEW YORK



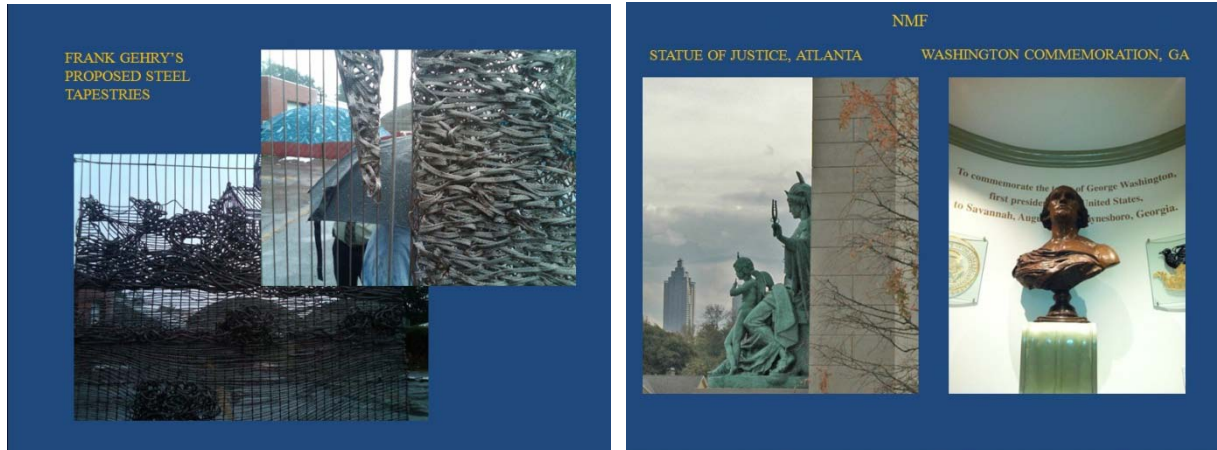
NMF- JOHN AND JOHN QUINCY ADAMS MEMORIAL, OPTIONS 2 AND 3



PEACE AND JUSTICE GATES, ATLANTA



The National Monuments Foundation builds monuments from materials that last for centuries. Mr. Gehry does not typically spec this type of material. It is my understanding that the gigantic fence that is described as a tapestry is promoted by the Gehry team as larger than the Hollywood sign. In urban environments, acid rain, bird droppings and air quality will seriously disintegrate this feature and most likely cause security issues for pedestrians below. The only positive thing I can say about this is that most likely very few people would ever go there and so there is less chance that a large piece of junk would fall on someone's head. Trash collection in public spaces just happens. The wind blows, visitors are careless and here, this is particularly a problem. Gusts will blow standard city trash all over the 600-foot long fence. We have to clean our Millennium Gate park every day and the cost to clean Gehry's enormous structure, every day, will be expensive. This will be a giant trash filter for an entire area. Have you ever forgotten to change your air-conditioning filters for a few months? Mr. Gehry said that the pylons were inspired by Eisenhower Interstate Bridge supports. The pylons will need titanic footings to carry this weight, so a great deal of the cost is underground. I have heard that the pylons are to be concrete, stone and/or metal depending on who you spoke to last. Each has maintenance problems, but due to continual design changes, I am unable to help you at the present time with pylon issues.



Fine Arts Commissioner McKinnell said “[I]f I can be facetious, the tapestry, when you and I are long gone, will disintegrate and the columns will be left and it will be like [the Roman ruins of] Paestum and it will be marvelous. So I think that is wonderful. I seriously think that is wonderful.” I have been to Paestum and have studied it thoroughly. This will not look like Paestum. This will look like the pylon ruins of the Embarcadero highway after the San Francisco earthquake.

The Gehry memorial is currently described as a 120 million dollar gesture, though it changes every time I speak to someone new. Tens of millions have been spent to date on a model that is still changing and that very few Americans like. Though Eisenhower belongs to all of us, he truly belongs to the Eisenhower family and their opposition must be honored. Successive generations of this family have continued to serve our country and we owe them respect as much for that service as we do for their heritage. The Millennium Gate cost 21 million dollars and has beautiful interiors, world-class allegorical bronze sculpture and an extraordinary high-tech interactive theater within a four acre park. If you compare the two monuments, the annual maintenance cost of the Millennium Gate is \$312,000. I can only guess, since the plan is always changing, that it would be in the millions, per year, for the Gehry memorial. 120 million dollars just to begin this is a giant financial boondoggle. You may have six Millennium Gates for the cost of one Gehry memorial, on similar sized sites. Regarding Mr. Gehry’s fee, I attach the most recently published Atlanta Gross Architectural Revenue list. Perkins and Will tops the list at 53 million dollars, second is TVS at 31 million and they go down from there. These are the annual fees of extremely large firms for an entire year. If they got a Gehry-type commission, they would only have to design one project a year!

Gehry, though talented in his style, does not have the inclination to do the job the Eisenhower family and the American people need. Our generation will be judged in centuries to come by this work, so close to the greatest symbol of democratic government ever built. **Do you want to be judged by this?** Please call for a new and open competition.

ATLANTA'S TOP 25 ARCHITECTURAL FIRMS

Ranked by Atlanta gross architectural revenue

Rank This Year	Last Year	Firm	2010 Atlanta gross architectural revenue*	2010 construction value of Atlanta projects*	Number of registered architects in Atlanta/Companywide	Total full-time staff in Atlanta/Companywide	Atlanta gross architectural revenue per Atlanta staff member	Partial listing of areas of specialty	Managing principal(s)	Year est. in Atlanta
1.	(4)	Perkins+Will Inc. 1315 Peachtree St. N.E. Atlanta, Ga. 30309 (404) 873-2300 www.perkinswill.com	\$53,188,472 \$375,806,546	\$175,564,038	131 858	215 1,578	\$247,388	health care, science and technology, K-12 education, higher education, corporate, commercial, civic	Willard Larisy	1977
2.	(2)	tvdesign 2700 Promenade Two, 1230 Peachtree St. N.E. Atlanta, Ga. 30309 (404) 888-6800 www.tvdesign.com	\$31,411,600 \$32,698,500	NA	63 71	157 172	\$192,700	architecture, interior design, sustainable design, planning, urban design	Mark Carter, Steve Clem, Teresa Edmister, Mike Ezell, Foster Lynn, Andrew McLean, Roger Neuenchwander, Tom Porter, Scott Sickerle, Becky Ward	1968
3.	(4)	Heery International Inc. 999 Peachtree St. N.E. Atlanta, Ga. 30309 (404) 881-9880 www.heery.com	\$25,908,000 \$155,899,000	\$8,000,000	47 146	192 794	\$156,960	commercial, institutional, judicial, sports, educational facilities	Bill Heitz, Greg Peirce	1952
4.	(3)	Lord, Aeck & Sargent Inc. 1201 Peachtree St. N.E., Suite 300 Atlanta, Ga. 30361 (877) 929-1400 www.lordaeck.com	\$23,918,688 \$27,786,509	\$166,430,000	52 61	113 137	\$211,670	science, education, historic preservation, arts and culture, housing, mixed-use	Joe Greco	1942
5.	(6)	Stanley Beaman & Sears Inc. 180 Peachtree St. N.W., Suite 600 Atlanta, Ga. 30303 www.stanleybeamansears.com (404) 524-2200	\$18,449,257 \$18,449,257	NA	20 20	56 56	\$348,099	health care, higher education, research, arts	Kimberly Stanley, Betsy Boaman, Burn Sears, Don Giltis, Veronique Pryor	1991
6.	(5)	Smallwood, Reynolds, Stewart, Stewart & Associates Inc. 3565 Piedmont Road N.E., Suite 303 Atlanta, Ga. 30305 www.sts38.com (404) 233-5485	\$17,724,834 \$17,724,834	\$264,000,000	21 48	67 137	NA	office, corporate, mixed-use, hospitality, health care, educational, industrial	Howard H. Stewart, Gil Garrison, Charles G. Hull	1979
7.	(9)	Niles Bolton Associates Inc. 3060 Peachtree Road N.W., Suite 600 Atlanta, Ga. 30305 www.nilesbolton.com (404) 365-7600	\$17,370,000 \$19,300,000	\$94,000,000	31 37	74 88	NA	mixed-use, clubs, education, multifamily housing, transportation	G. Niles Bolton, Ray Kimsey, Dan Meacham, Bill vonHedemann	1975
8.	(NR)	Merrick & Co. 229 Peachtree St. N.E., Suite 800 Atlanta, Ga. 30303 www.merrick.com (404) 739-5100	\$14,900,000 \$38,400,000	\$165,000,000	3 12	49 478	\$300,000	civil and site engineering, structural engineering, architecture, mechanical/electrical engineering	David Luke	2000
9.	(8)	Cooper Carry Inc. 191 Peachtree St. N.E., Suite 2400 Atlanta, Ga. 30303 www.coopercarry.com (404) 237-2000	\$12,345,135 \$19,215,360	NA	64 85	126 165	\$97,977	mixed-use, hospitality, corporate, office, government, education, science and technology, retail, residential, urban/community planning, transit, health care	Jerome M. Cooper, Kevin R. Cantley, Roger L. Miller, David W. Kitchens	1960
10.	(10)	Rosser International Inc. 524 West Peachtree St. N.W. Atlanta, Ga. 30308 www.rosser.com (404) 876-3800	\$11,200,000 \$12,500,000	\$116,000,000	14 16	70 80	\$160,000	justice, sports and public assembly, higher education, corporate, military, aviation	Bill Griffin, Ray Ashe, Buddy Golson, Fred Krenson, John Wyle	1947
11.	(7)	HDR Architecture 1100 Peachtree St. N.E., Suite 400 Atlanta, Ga. 30309 www.hdrinc.com (404) 815-1212	\$10,690,000 \$358,700,000	\$376,700,000	10 620	48 1,638	\$222,708	complex architectural/engineering design and building solutions for laboratories, science and technology and health-care facilities	F. Chip Bullock Jr.	1999
12.	(11)	Leo A. Daly Co. 10 10th St., Suite 200 Atlanta, Ga. 30309 www.leoadaly.com (404) 874-8333	\$9,750,000 \$110,000,000	\$72,000,000	9 146	37 863	\$260,000	higher education, science and technology, health care, government, aviation, libraries	Jerry G. Voith	1985
13.	(12)	Heilmuth, Obata + Kassabaum Inc. (HOK) 191 Peachtree St. N.E. Atlanta, Ga. 30303 (404) 439-9000 www.hok.com	\$9,037,000 \$391,000,000	\$151,000,000	16 382	49 1,853	\$184,000	cultural, corporate, science and technology, government/justice, health care	John Eisenlau, Todd Bertsch	1986
14.	(20)	Phillips Partnership P.C. 400 Perimeter Center Terrace, Suite 650 Atlanta, Ga. 30346 (770) 394-1616 www.phillipspart.com	\$8,214,568 \$8,214,568	NA	7 7	72 75	\$114,092	retail, multifamily, hospitality, mixed-use	Jerry J. Phillips	2001
15.	(NR)	Urban Design Group 400 Galleria Parkway, Suite 1400 Atlanta, Ga. 30339 www.urbandesigngroup.com (770) 444-9630	\$8,059,773 \$8,895,381	NA	8 16	18 40	\$234,801	hospitality, gaming/entertainment, mixed-use developments, restaurants, libraries, office	Donald C. Buenger, Ken Rlyne	1989
16.	(13)	CDH Partners Inc. 675 Tower Road Marietta, Ga. 30060 www.cdhpartners.com (770) 423-0016	\$7,471,000 \$7,471,000	\$106,729,000	11 11	50 50	\$149,420	medical, educational, religious, assisted living, engineering	William E. Chegwidden, David Strickland, Thomas K. Smith, Melissa A. Cantrell, Timothy A. Parnam	1977
17.	(18)	Howell Rusk Dodson - Architects^A 3355 Lenox Road N.E., Suite 1190 Atlanta, Ga. 30326 www.hrd-arch.com (404) 266-9631	\$7,433,975 \$7,433,975	\$128,000,000	12 12	26 26	\$285,922	health care, telecommunications	Oren C. Rusk Jr.	1909
18.	(19)	Robertson/Loia/ Roof P.C. 3460 Preston Ridge Road, Suite 215 Alpharetta, Ga. 30005 (770) 674-2600 www.rlrfpc.com	\$7,044,000 \$7,044,000	\$125,000,000	8 8	51 51	\$138,000	retail, educational, commercial, medical	L. Taylor Robertson, Duane P. Roof	1980
19.	(17)	THW Design 2100 RiverEdge Parkway, Suite 900 Atlanta, Ga. 30328 www.thw.com (404) 916-2220	\$6,528,215 \$6,703,215	\$31,000,000	15 16	42 43	\$155,434	high-rise, mixed-use and community developments for senior living and affordable housing	Mark Tilden, Jim Hudgins, John Enwright	1957
20.	(NR)	Smith Carter Architects and Engineers 1123 Zonolite Road, Suite 25 Atlanta, Ga. 30306 www.smithcarter.com (404) 815-2053	\$6,459,248 \$33,324,641	\$35,000,000	10 37	39 200	\$165,622	biomedical laboratories, chemical/biological containment facilities, university research facilities, animal/wildlife facilities	Leslie Gartner	2000
21.	(25)	Wakefield Inc. 5155 Peachtree Parkway, Building 300 Norcross, Ga. 30092 www.wbassoc.com (770) 209-9393	\$6,400,000 \$7,000,000	\$75,000,000	9 10	48 52	NA	mixed-use retail, commercial, industrial, municipal, residential, interior design	John B. Beasley Jr., R. Lamar Wakefield	1980
22.	(NR)	Greenberg Farrow Architecture Inc. 1430 West Peachtree St. N.W., Suite 200 Atlanta, Ga. 30309 www.greenbergfarrow.com (404) 601-4000	\$5,900,000 \$26,200,000	\$15,000,000	8 35	57 160	NA	retail, restaurants, high-rise residential, mixed-use	Essie Ghadrani, Hughes Thompson, John Nourzad, Navid Maqami	1974
23.	(15)	Pleper O'Brien Herr Architects Ltd. 3000 Royal Blvd. S. Alpharetta, Ga. 30022 www.poharchitects.com (770) 569-1706	\$5,776,073 \$5,776,073	\$190,000,000	10 12	27 32	\$180,502	commercial, data centers, institutional, industrial, religious, automotive	Charles J. O'Brien III, Terry Herr, Jeff Pleper, David Holt, Johnny Hembree, Anthony Turpin, Richard Kramer, Charles J. O'Brien IV, Loren Wright	1971
24.	(21)	Stevens & Wilkinson Inc.^A 100 Peachtree St. N.W., Suite 2500 Atlanta, Ga. 30303 www.stevens-wilkinson.com (404) 522-8888	\$5,445,000 \$10,640,000	\$65,000,000	15 23	48 85	\$113,000	education, government, mixed-use/hospitality, office/workplace, health care	Ron Stang, Bill Clark, Lee Morris	1919
25.	(NR)	Collins Cooper Carusi Architects Inc. 3391 Peachtree Road N.E., Suite 400 Atlanta, Ga. 30326 www.collinscoopercarusi.com (404) 873-0001	\$5,007,776 \$5,007,776	\$193,713,020	20 20	35 35	\$185,473	K-12 education, higher education, recreation, religious, interior architecture	Michael Collins, Sandy Cooper, Tracy Carusi, Jeffrey Juliano, Eric Richardson	1987

* Refers to gross architectural revenue for work done out of the Atlanta office, regardless of where the project was located.

** Refers to projects in the 20-county metro Atlanta area.

^A Company submitted a statement of verification supporting figures.

NA - Not available or not applicable

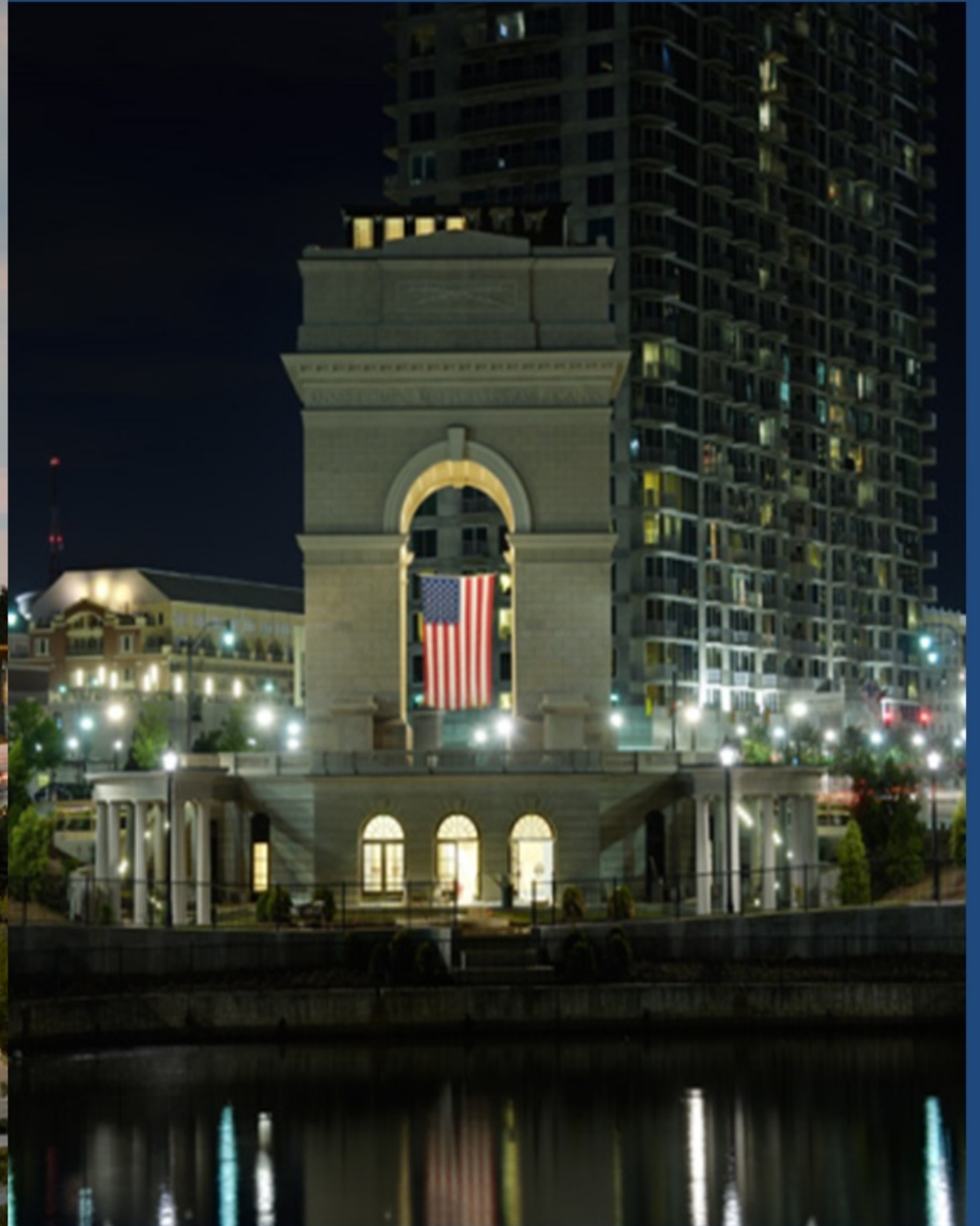
NR - Not ranked or not relevant

SOURCES: Atlanta Business Chronicle research and the companies

It is not the intent of this list to endorse the participants or to imply that the listing of a company indicates its quality. Although every attempt is made to ensure the accuracy and thoroughness of Atlanta Business Chronicle charts, omissions sometimes occur. All information listed is based on responses from the companies to Atlanta Business Chronicle surveys. Please send corrections or additions on company letterhead to Rachel Gates, Research Associate, Atlanta Business Chronicle, 3423 Piedmont Road, Suite 400, Atlanta, Ga. 30305, or e-mail rgates@abjournal.com.



MILLENNIUM GATE MUSEUM, ATLANTA, EAST AND WEST FRONTS



MILLENNIUM GATE GALLERIES AND PERIOD ROOMS

