



# **OUTDOOR RECREATION FORT SILL, OK**

*Your One-Stop Shop for Outdoor Fun and Adventure!*

## **ADVENTURE CENTER**

2502 Sheridan Road  
(Inside the RecPlex)  
580.355.8270  
1.800.375.8270

## **Lake Elmer Thomas Recreation Area (LETRA)**

7463 Deer Creek Canyon Road  
580.442.5854



# Adventure Center

Located in the south end of the RecPlex

## Hours of Operation

### **Summer Hours** (28 May - 7 September)

Monday	8:30 a.m. - 4:30 p.m.
Tuesday - Thursday	9:00 a.m. - 4:30 p.m.
Friday	8:30 a.m. - 5:00 p.m.
Saturday	8:00a.m.- 12:00p.m.
Sunday & Holidays	Closed

### **Winter Hours**

Monday - Friday	9:00 a.m. - 4:00 p.m.
Saturday	8:00a.m.- 12:00p.m.
Sunday & Holidays	Closed

The Outdoor Adventure Center is located in the RecPlex and offers patrons a large variety of rental items such as tents, canoes, camping supplies, moon bounces, and carnival games.

All rental fees are paid in full at the time of reservation. Cash cleaning deposits are required from all campers and will be refunded when the items are returned clean.

All motor boats require a boaters safety course which can be taken online at [www.boat-ed.com](http://www.boat-ed.com). Certificate required.

Cancellations must be made a minimum of 72 hours in advance. It is policy that cash refunds will not be made. However, rain checks and credits will be issued.

Equipment returned late will be assessed a basic late fee of \$5 per day in addition to the rental fee. Some items are assigned a specific late fee, check the listing in this booklet.

ID is required for all reservations.



<b>BOATING</b>	<b>DAILY</b>	<b>WEEKEND</b>	<b>WEEKLY</b>
2-person Touring Kayak	\$10.00	\$20.00	\$50.00
16' Tracker Boat	\$45.00	\$80.00	\$225.00
Canoe	\$10.00	\$20.00	\$50.00
Rod & Reel	\$3.00	\$6.00	\$15.00
Ski	\$2.00	\$4.00	\$10.00
<b>MISCELLANEOUS</b>			
Battery Operated Pump	\$3.00	\$6.00	\$15.00
CPT Chair w/Table	\$6.00	\$12.00	\$30.00
CPT Chair	\$5.00	\$10.00	\$25.00
Honda Generators 2000	\$30.00	\$60.00	\$150.00
Honda Generators 3000	\$40.00	\$80.00	\$200.00
10x10 Bug Screen	\$5.00	\$10.00	\$25.00
10x10 Windshield	\$5.00	\$10.00	\$25.00
Frisbee	\$1.00	\$2.00	\$5.00
Soccer Ball	\$1.00	\$2.00	\$5.00
Basketball	\$1.00	\$2.00	\$5.00
Air Dancer	\$20.00	\$40.00	\$100.00
Magellan GPS	\$8.00	\$16.00	\$40.00
Air Mattress (Queen)	\$10.00	\$20.00	\$50.00
Air Mattress (Twin)	\$5.00	\$10.00	\$25.00
Santa Suit/Easter Bunny Suit	\$30.00	\$60.00	\$150.00
Cargo Trailer (5x8)	\$20.00	\$40.00	\$100.00
Cargo Trailer (6x10)	\$30.00	\$60.00	\$150.00
<b>TABLE AND CHAIRS</b>			
6 foot Folding Table	\$5.00	\$10.00	\$25.00
Folding Chairs (15)	\$22.00	\$44.00	\$110.00
Folding Chairs (50)	\$50.00	\$100.00	\$250.00
Folding Chair Bulk (100)	\$75.00	\$150.00	\$375.00
Small Folding Picnic Table	\$5.00	\$10.00	\$25.00
Large Folding Picnic Table	\$20.00	\$40.00	\$100.00
<b>FOOD EQUIPMENT</b>			
Popcorn Machine	\$16.00	\$32.00	\$80.00
Hot Dog Machine	\$16.00	\$32.00	\$80.00
Sno Cone Machine	\$16.00	\$32.00	\$80.00
Nacho Machine	\$16.00	\$32.00	\$80.00
Cotton Candy Machine	\$27.00	\$54.00	\$135.00
Chocolate Fountain	\$40.00	\$80.00	\$200.00
Champagne Fountain	\$40.00	\$80.00	\$200.00
Caramel Apple Machine	\$20.00	\$40.00	\$100.00
Margarita Machine	\$16.00	\$32.00	\$80.00
<b>CAMPING GEAR</b>			
Ice Chest, Small	\$1.00	\$2.00	\$5.00
Ice Chest, Medium	\$4.00	\$8.00	\$20.00
Ice Chest, Medium w/Wheels	\$5.00	\$10.00	\$25.00
Ice Chest, Large	\$6.00	\$12.00	\$30.00
Party Cooler, Plastic	\$5.00	\$10.00	\$25.00
Party Cooler, Stainless Steel	\$7.00	\$14.00	\$35.00
Large Tub	\$12.00	\$24.00	\$60.00
Ice Vault	\$8.00	\$16.00	\$40.00

Hot Water on Demand	\$20.00	\$40.00	\$100.00
5 Gal Water Jug	\$2.00	\$4.00	\$10.00
Portable Refrigerator/Freezer	\$40.00	\$80.00	\$200.00
Lantern	\$3.00	\$6.00	\$15.00
Battery Operated Lantern	\$4.00	\$8.00	\$20.00
Lantern w/Case	\$3.00	\$6.00	\$15.00
Lantern w/Radio	\$5.00	\$10.00	\$25.00
Lantern (Full Size)	\$5.00	\$10.00	\$25.00
Propane Torch	\$3.00	\$6.00	\$15.00
Mr. Heater	\$5.00	\$10.00	\$25.00
Cot	\$2.00	\$4.00	\$10.00
Single Burner Stove	\$2.00	\$4.00	\$10.00
Stove (2 burner)	\$3.00	\$6.00	\$15.00
Portable Fryer	\$20.00	\$40.00	\$100.00
Propane Grill	\$6.00	\$12.00	\$30.00
Propane Skillet	\$6.00	\$12.00	\$30.00
Tilt Fan	\$3.00	\$6.00	\$15.00
Misting Fan	\$4.00	\$8.00	\$20.00
Fire Pit	\$5.00	\$10.00	\$25.00
Foam Pads	\$1.00	\$2.00	\$5.00
Sleeping Bag	\$3.00	\$6.00	\$15.00
Tent, 2-3 person	\$6.00	\$12.00	\$30.00
Tent, 4-6 person	\$10.00	\$20.00	\$50.00
3 Room Tent	\$12.00	\$24.00	\$60.00
Basic Camping Pkg *includes 2-3 person tent, (2) sleeping bags, lantern & stove	\$17.00	\$34.00	\$85.00
Family Pkg *includes 4-6 person tent, (4) sleeping bags, lantern & stove	\$26.00	\$52.00	\$130.00
10x10 Gazebo	\$20.00	\$40.00	\$100.00
10x20 Gazebo	\$40.00	\$80.00	\$200.00
Sun Shade 11x13	\$15.00	\$30.00	\$75.00
Towed Grill	\$30.00	\$60.00	\$150.00
40 Gal Grill	\$10.00	\$20.00	\$50.00
55 Drum Grill	\$25.00	\$50.00	\$125.00
Smoker	\$6.00	\$12.00	\$30.00

All equipment is to be returned clean. Some items require a cleaning deposit.  
The cleaning fee on grills is \$25; on any other items the fee is \$10 per item.

<b>CAMPING TRAILERS</b>	<b>DAILY</b>	<b>WEEKEND</b>	<b>WEEKLY</b>
31' Cavalier *Heat & air, 1 full size bed, 2 pull outs, set of bunk beds, full size refrigerator, Lp gas (\$50 cash cleaning fee required)	\$80.00	\$160.00	\$400.00
21' Salem *Heat& air, 1 full size bed, 2 pull out bed, 1 bunk bed, bathroom, kitchen, CD player, Lp gas and awning	\$60.00	\$110.00	\$275.00
19' Surveyor *Heat & air 1 full size bed, 1 pull out bed, bathroom, kitchen, CD player, Lp gas and awning	\$50.00	\$90.00	\$225.00
Medicine Creek Campers * Heat & air, 1 full size bed, 2 pull outs, set of bunk beds, full size refrigerator, Lp gas , towels, dishes, & pots and pans (\$50 cash cleaning fee required)	\$40.00	\$120.00	\$140.00 <b>Monthly</b> \$450.00

\* \$100 credit card deposit on campers.

<b>GAMES</b>	<b>DAILY</b>	<b>WEEKEND</b>	<b>WEEKLY</b>
Croquet Set	\$5.00	\$10.00	\$25.00
Horse Shoes	\$3.00	\$6.00	\$15.00
Child Horse Shoes	\$1.00	\$2.00	\$5.00
Potato Sacks	\$5.00	\$10.00	\$25.00
Softball Kit	\$11.00	\$22.00	\$55.00
Flag Football	\$11.00	\$22.00	\$55.00
Bulls Eye	\$40.00	N/A	N/A
Limbo Rock	\$5.00	\$10.00	\$25.00
Limbo	\$35.00	\$70.00	\$175.00
Tug-O-War Rope	\$3.00	\$6.00	\$15.00
Volleyball w/Net	\$3.00	\$6.00	\$15.00
Volleyball Package	\$6.00	\$12.00	\$30.00
Child's Bowling	\$5.00	\$10.00	\$25.00
Big Foot Race/Down a Clown	\$20.00	\$40.00	\$100.00
(T) Ring Toss/Bean Toss/Hoop Shot	\$20.00	\$40.00	\$100.00
Tic-Tac-Toss	\$25.00	N/A	N/A
Trio Toss	\$20.00	\$40.00	\$100.00
Pin the Tail on the Donkey	\$25.00	N/A	N/A
Dunk Tank	\$48.00	\$96.00	\$240.00
Money Machine	\$100.00	N/A	N/A
Sumo Suits/Kid's Sumo	\$80.00	N/A	N/A
1 on 1 Hoop	\$40.00	\$80.00	\$200.00
Easy Striker	\$90.00	N/A	N/A
Kiddie Striker	\$25.00	\$50.00	\$125.00
Blongo	\$10.00	\$20.00	\$50.00
Plinko	\$10.00	\$20.00	\$50.00
Tip-a-Troll	\$20.00	\$40.00	\$100.00
Krazy Kans	\$20.00	\$40.00	\$100.00
Frog Hop/ Cue Ball	\$25.00	\$50.00	\$125.00
Skee Roll	\$25.00	\$50.00	\$125.00
Bicycle w/Helmet	\$5.00	\$10.00	\$25.00
Bicycle Rack	\$5.00	\$10.00	\$25.00
Bicycle Trailer	\$5.00	\$10.00	\$25.00
Ring Toss	\$4.00	\$8.00	\$20.00
Fundex Bullseye	\$5.00	\$10.00	\$25.00
Baggo	\$10.00	\$20.00	\$50.00
Pig Race	\$40.00	\$80.00	\$200.00
<b>INFLATABLES</b>			
Moon Bounces (*castle, princess castle, sport bounce, bouncy tank, house, dino)	\$85.00	N/A	N/A
Human Pretzel	\$90.00	N/A	N/A
Inflatable Movie Screen	\$100.00	N/A	N/A
Cartoon Combo (w/Trailer 1 7/8 ball to bow)	\$155.00	N/A	N/A
Boxing Ring *1 set red gloves, 1 set blue gloves, red face protector, blue face protector	\$100.00	N/A	N/A
Velcro Wall (* 3 Suits S,M,L)	\$140.00	N/A	N/A
Tug-N-Dunk	\$140.00	N/A	N/A
2 Lane Bungee Run	\$140.00	N/A	N/A
Gladiator Joust	\$140.00	N/A	N/A



## VEHICLE, BOAT, RV & MINI STORAGE

The Adventure Center offers both long and short term vehicle storage & mini storage units. Vehicles are stored with a variety of options and price ranges. The facility offers controlled, restricted access for your property's protection.

Mini storage (5x9)	\$20/Month
Large pull thru space	\$25/Month
Outdoor back-in space	\$20/Month
Covered space	\$30/Month





# Medicine Creek RV Park

Medicine Creek has a beautifully shaded RV park located along the banks.

\*There are six full service sites, two rental camper sites and two dry pads with no service. Check-in and check-out is noon daily. This is the perfect place for visiting friends & relatives. PCS, ETS, TDY and retired personnel are encouraged to use the park.

\*Reservations may be made by visiting the Adventure Center or calling during regular hours. Sponsors may make arrangements for their non-military guests.

* Full Service Sites	\$12/Night
* Dry Pads	\$5/Night
* Rental Campers	\$40/Night

\* Personnel arriving after duty hours may call ahead and receive a site number, then check-in the next day.

**PLEASE NOTE- A RESERVATION GUARANTEES YOU A SPACE IN THE PARK- NOT A SPECIFIC SITE.**



# Parks

Fort Sill has the perfect spot for your next picnic. You can reserve one of the five outdoor parks at the Adventure Center. These parks can be reserved for your family outings or group at no charge.



## **CO-OP Park**

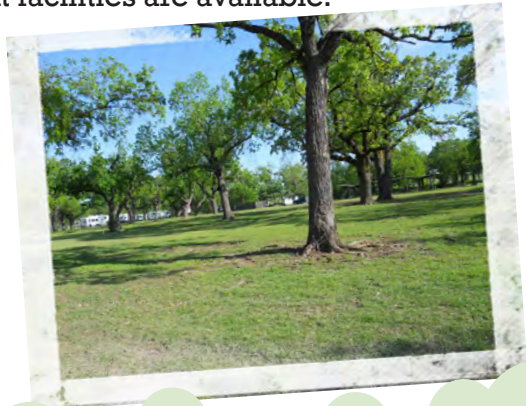
Located on Upton Rd between Fort Sill Blvd and Quinette Rd. Next to Martha Song Bird Nature Area makes this park perfect for a rest after a nature hike. Includes playgrounds and the NEOS interactive electronic game.



## **Medicine Creek Park**

Located along the banks of historic Medicine Creek, across from the Nature Center.

Pavilion and permanent facilities are available.





## **Ambrosia Spring Park**

A secluded park, nestled in the woods.  
Pavilion and primitive facilities are available.



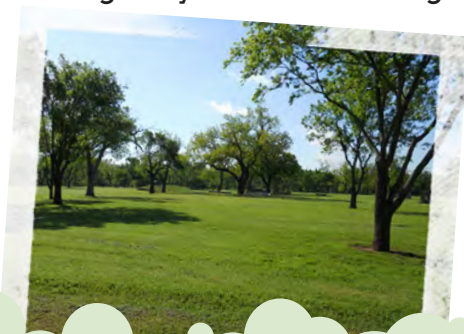
## **Quinette Park**

A large open park with space for games and events.  
Pavilion and primitive facilities are available.



## **Rucker Park**

An open park with plenty of space for games and events.  
Originally built as a training site for the 1930's Army  
Equestrian Team.



# Rec Hut

(Bldg. 602) - next to Butner Field

*Feel like playing some tennis or skating,  
but don't have the equipment?*

The Rec Hut can meet your needs. Roller skates, roller blades and tennis racquets are available for check out. Equipment checkout is quick and easy; bring your picture ID and it will be returned to you when the equipment is returned. May be available by reservation by calling the Fort Sill Sports Office at (580) 442-3269 or 442-5623.

## Hours of Operation

### **Summer Hours** (Memorial Day Weekend - Labor Day)

Monday - Wednesday	1:00 p.m. - 8:00 p.m.
Thursday - Saturday	12:00 p.m. - 10:00 p.m.
Sunday	12:00 p.m. - 6:00 p.m.

### **Winter Hours** (Tuesday following Labor Day - Last Day of School)

Thursday - Friday	5:00 p.m. - 10:00 p.m.
Saturday	12:00 p.m. - 10:00 p.m.
Sunday	12:00 p.m. - 6:00 p.m.



# Lake Elmer Thomas Recreation Area (LETRA)

7463 Deer Creek Canyon Road  
(580) 442-5854

Lake Elmer Thomas Recreation Area (LETRA) is Fort Sill's premier lake-side recreation area surrounded by the breathtaking Wichita Mountains. The 360-acre lake is surrounded by a sandy beach and picturesque native prairie. LETRA is open-year round for camping, fishing, swimming, miniature golf, picnics, and beautiful views. Admission to LETRA is free to the public. The facilities and services at LETRA are provided for your leisure time recreation. Should you have any questions or need assistance, do not hesitate to contact the management or other employees in the park.

## Patronage

Lake Elmer Thomas Recreation Area is open to the public. A picture ID is required for all persons 16 years of age or older to enter Fort Sill. This can be a driver's license, school ID or even a passport.

## Country Store

The Country Store is a small convenience store offering items from batteries to charcoal. It has a full line of fishing tackle, and bait is also available.

## The Lodge

The Lodge is an impressive facility with a beautiful deck overlooking the lake and Mount Scott. Catch a glimpse of buffalo on the Refuge. During the summer season, the Lodge is a restaurant. However, in the off season, it is available to rent for parties and other group functions. The rental fee is \$25 per hour with a minimum of 2 hours, not to exceed 4 hours for the day.

## Scuba Diving

The lake is open year round for recreational scuba diving. Dive flags must be used. Divers entering the water from the military side, check-in and out at the administration office.

## Boating

LETRA is a no-wake lake. The boat ramp is located on the east side of the park with ample space for cars, trucks and trailers. Remember...NO jet skis or water skiing. Proceed only at a trolling speed. Violators may be ticketed by the State Game Wardens.

## Fishing

All fisherman, 16 years and older, must possess a current Oklahoma state fishing license which can be purchased in the Country Store. A Fort Sill permit is not required.

## LETRA Cabins and Camping

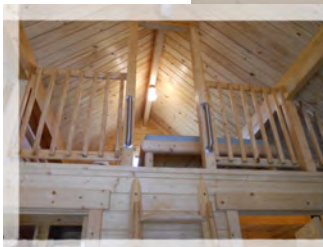
The LETRA cabins are ideal for the campers who like the camping experience with the comfort of home. Cabins come equipped with coffee maker, refrigerator, microwave, dishes and utensils, two burner stove, linens, towels, bathroom with shower, and a television/DVD. Cabins are available in 3 sizes; small, medium and large, and prices vary on the sizes and the time of year.

<b>Modern Cabins</b>	<b>Off-Season Daily Military/Civilian</b>	<b>Peak-Season Daily Military/Civilian</b>
Small *Sleeps 4 max. 1 Full size bed/1 Futon	\$45/\$55	\$55/\$65
Medium *Sleeps 6 max. 2 Full size beds/1 Futon	\$55/\$65	\$65/\$75
Large *Sleeps 7 max. 2 Full size beds/1 Twin bed /1 Futon	\$65/\$75	\$75/\$85

<b>Primitive Cabins</b>	<b>Off-Season Daily Military/Civilian</b>	<b>Peak-Season Daily Military/Civilian</b>
The very basic in indoor camping with a variety of capacity and sleeping arrangements.	\$30/\$40	\$30/\$40

<b>RV Site Rentals</b>	<b>Off-Season Daily Military/Civilian</b>	<b>Peak-Season Daily Military/Civilian</b>
The LETRA RV Park has level, pull through sites with water, sewer, and 30 or 50 amp service.	\$16/\$16	\$16/\$21

<b>Tents Sites</b>	<b>Tent Permit</b>	<b>Tent Permit with Tent Rental</b>
Tent camping is available at LETRA year round. Sites are first come, first serve and some sites come with a small covered pavilion, grill and picnic table.	\$6	\$15



<b>Moon Bounces</b>	<b>Price per day</b>
Princess Castle	\$60
Barn Jumper	\$60
Sports Jumper	\$60

\*These moon bounces are for LETRA on site use only and can not be taken off premises.  
 \*A generator is available for rent for \$20 per day.



**Seasonal Activities:**

- \* Double Flume Water Slide
- \* Bath House and Beach
- \* Beach Snack Bar
- \* Miniature Golf Course
- \* Restaurant
- \* Paddle boats, canoes, bikes, Country Store and much more.

**Year Round Activities:**

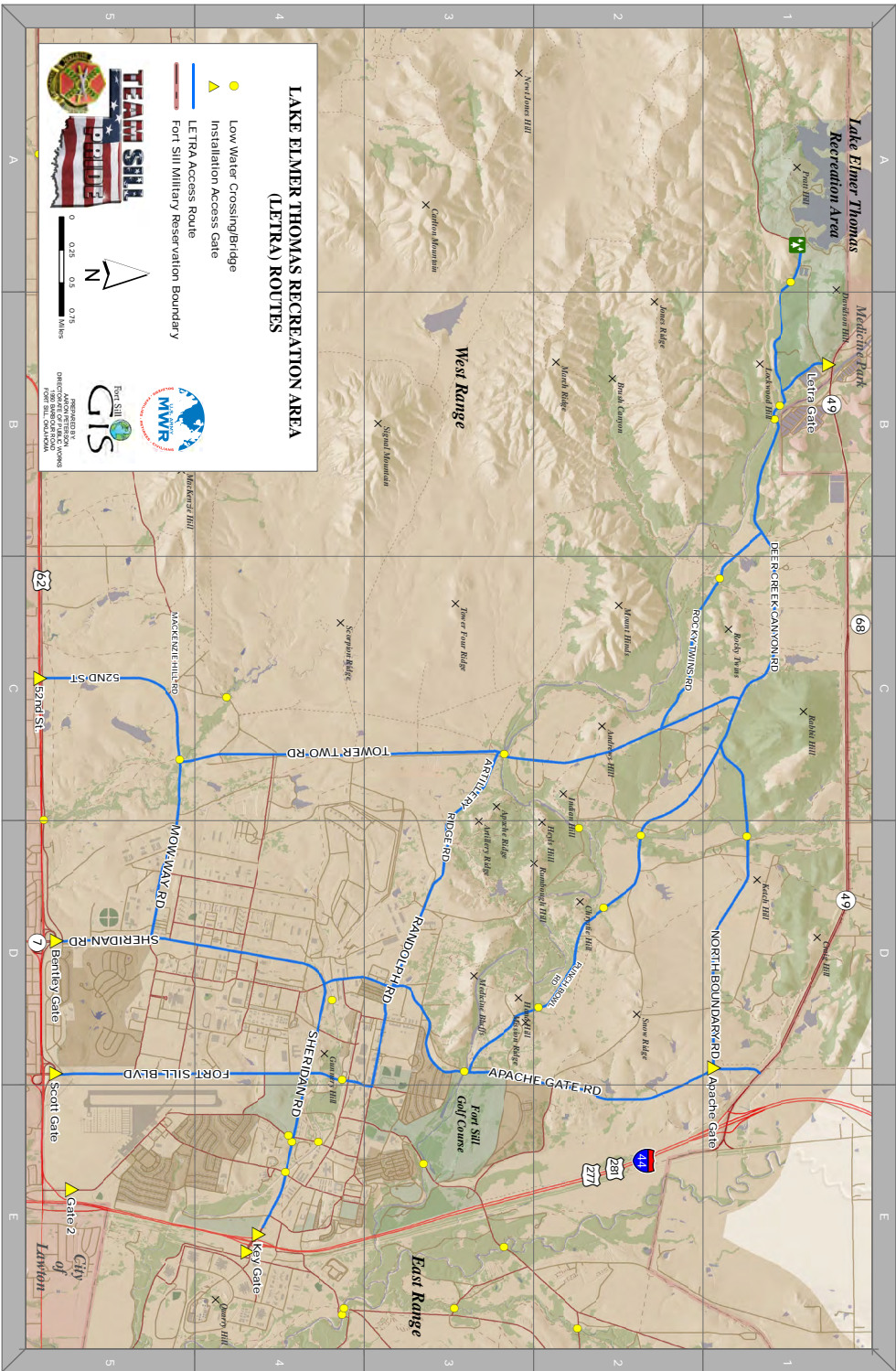
- \* 62 RV Campsites w/Full Hookups
- \* Picnic Pavilions with Grills
- \* Playgrounds
- \* Laundry Facility
- \* Boat Launch
- \* Fishing

## **Lake Elmer Thomas Recreation Area**

Enter Key Gate from I-44 (you are now on Sheridan) Turn Right on Currie, Turn Left on Randolph, Turn Right on Tower Two road (be cautious of the water crossings) Go approx. 1.8 miles. Turn Left on Deer Creek Canyon Road (not labeled...) Go approx. 3.6 miles and LETRA is on your right!

For more information and reservations, contact LETRA at (580) 442-5854.





Items available for rent



Velcro Wall



Bouncy Tank



Princess Castle



Gladiator Joust



5 in 1  
Cartoon  
Combo



[www.sillmwr.com](http://www.sillmwr.com)