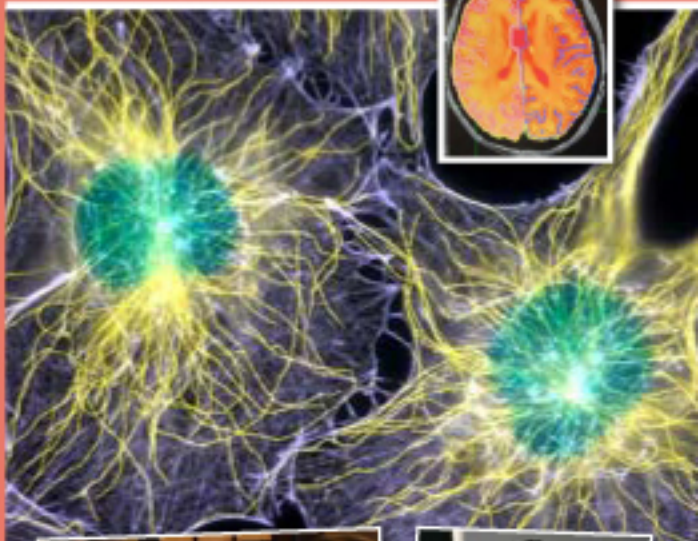
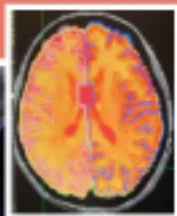


CLINICAL RESEARCH
FELLOWSHIP PROGRAMS

Psychiatry

National Institute of Mental Health
Division of Intramural Research Programs



National Institutes of Health
National Institute of Mental Health
Department of Health and Human Services



NIMH
National Institute
of Mental Health

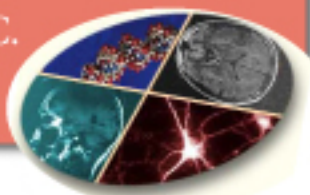
CLINICAL FELLOWSHIP PROGRAMS IN

Psychiatry*

The Clinical Fellowship Program is designed to attract and inspire future academic psychiatrists and train them for successful research careers in the clinical neurosciences.

This NIMH program utilizes the deep and varied resources of the National Institutes of Health (NIH) Division of Intramural Research Programs (IRP), the NIH Clinical Center (CC) and the expertise of world-renowned researchers.

Research training is conducted in Bethesda, Maryland; collaborative clinical training programs are located in Washington, D.C.



National Institute of Mental Health
Intramural Research Programs
NIH Clinical Center
National Institutes of Health
Department of Health and Human Services

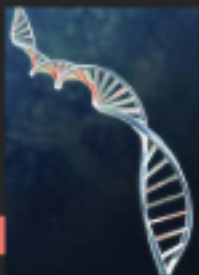
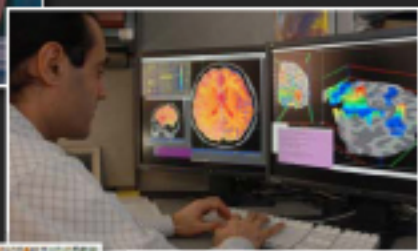
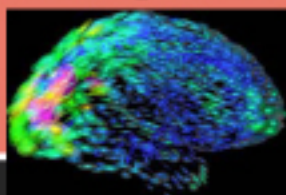


AREAS *of* RESEARCH

OPPORTUNITIES

- > Mood and Anxiety Disorders
- > Behavioral Endocrinology
- > Child & Adolescent Psychiatry
- > Developmental Neuropsychiatry
- > Bipolar Spectrum Disorders
- > Schizophrenia
- > Cognitive Neuroscience
- > Psychosomatic Medicine
- > More

http://intramural.nimh.nih.gov/research/res_areas.html



OVERVIEW of NIMH IRP CLINICAL FELLOWSHIP

The National Institute of Mental Health (NIMH) Division of Intramural Research Programs (IRP) offers extensive training opportunities in clinical and translational research in psychiatry and neuroscience. The core training program is mentorship-driven and focuses on the acquisition and refinement of research skills including the evaluation and clinical care of research subjects, development of research protocols, performance of clinical and/or laboratory research, and preparation and presentation of study results. Clinical Research Fellows join specialty research groups that study the mechanisms or treatments of major psychiatric illnesses. Emphasis in these programs is on psychopharmacology, behavioral endocrinology, psychosomatic medicine, child psychiatry, brain imaging, molecular biology, and neurogenetics. Successful candidates have a strong background in research and a commitment to an academic career path.

Clinical and research training are integrated during the three-year clinical fellowship program. Fellows assume responsibility for the evaluation and clinical care of inpatient and/or outpatient research subjects in addition to providing on-call psychiatric consultations to NIH Clinical Center patients. Research design, methodology, statistical analysis, and data presentation skills are developed through interaction with mentors, didactic sessions, and practical experiences. Trainees are exposed to specialized coursework including the Principles and Practice of Clinical Research, Neurobiology of Mental Illness, Grant-Writing and Clinical Research Bioethics. For trainees with primarily laboratory interests, basic research training opportunities are also available.

** Applicants can be from related medical specialties such as Neurology.*

CONTACT: Joyce Y. Chung, M.D. Training Director
(301) 496-9675 | chungj@mail.nih.gov

ACGME TRAINING OPPORTUNITIES



PGY4 Residency Training Program

The NIMH IRP offers an ACGME-approved residency program for the fourth year of post graduate psychiatric training (PGY₄).

This program offers research training in the area of biological psychiatry and is conceptualized as an elective fourth year of residency. Successful candidates have completed all required psychiatry residency rotations and satisfied all core competencies. Residents who transfer to the NIMH usually continue as a clinical fellow for two additional years of research training.

<http://www.cc.nih.gov/training/gme/programs/psychiatry.html>



Combined Child Psychiatry and Research Fellowship

The Children's National Medical Center (CNMC) and the NIMH IRP offer a combined

three-year ACGME-approved child and adolescent psychiatry and research fellowship for qualified applicants. Time is shared between both sites with the goal to recruit and train outstanding psychiatrists in the diagnosis, treatment and clinical management of children and adolescents with psychiatric disorders. Trainees are considered to be clinical research fellows and engage in the same mentorship driven process to gain focused research experience in child and adolescent psychiatry.

http://www.childrensnational.org/child_adolescent_psychiatry.aspx
[Click on the tab "Length of Training"]



Psychosomatic Medicine (PM) Fellowship Program

This one-year joint ACGME accredited fellowship provides comprehensive training

in Psychosomatic Medicine (Consultation-Liaison Psychiatry). It includes experiences in diverse cutting-edge academic and research centers, with six months at the NIH Clinical Center and six months at the Washington Hospital Center. In addition, fellows spend one day per week at Georgetown University Medical Center, the institutional sponsor, for outpatient PM activities and core didactics.

<http://www.georgetownuniversityhospital.org/body.cfm?id=555739>

ADMISSIONS

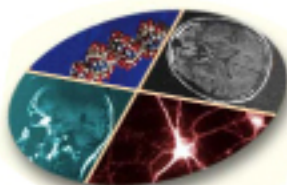
Review NIMH IRP website for more information on research areas and investigator mentors. Interviews can be scheduled throughout the year.

APPLICATION PROCESS

Contact the Training Director to discuss qualifications for the program, submit CV and cover letter.

FOR MORE INFORMATION

Joyce Y. Chung, M.D.
Training Director
Clinical Fellowship Program
NIH Clinical Center, NIMH
10-CRC, Rm 6-5340, MSC 1276
10 Center Drive
Bethesda, MD 20892-1276
Tel: (301) 496-9675
E-mail: chungj@mail.nih.gov



<http://intramural.nimh.nih.gov/>
[NIMH Division of Intramural Research Programs]

<http://intramural.nimh.nih.gov/oft/index.html>
[Office of Fellowship Training]

National Institutes of Health
National Institute of Mental Health
Department of Health and Human Services



NIMH
National Institute
of Mental Health