



INTERNATIONAL
TRADE
ADMINISTRATION

Steel Import Monitor Tutorial

Overview of the Import Monitor

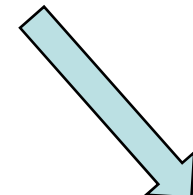
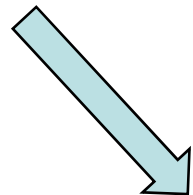
Tutorial Overview

This Tutorial will cover:

- **Data table features**
- **Types of data views available**
 - **Product view**
 - **Country view**
 - **HTS view**
 - **Graphs**
 - **Summary tables**
- **Additional data**

Data Table Features

Tables in the Import Monitor allow you to view the import data compiled from two different sources: Census Bureau data and Steel Import Licensing data.



Graph	Country	Census Data												License Data		
		JAN08	FEB08	MAR08	APR08	MAY08	JUN08	JUL08	AUG08	SEP08	OCT08	NOV08	DEC08	JAN09	FEB09	MAR09
M	WORLD	2,419,196	2,252,849	2,332,179	2,702,525	2,268,814	2,476,551	2,638,789	2,310,852	2,674,915	2,828,485	2,183,803	1,874,759	2,148,659	1,506,455	748,321
M	CHINA	247,663	214,676	220,440	163,873	261,950	334,487	322,481	447,406	515,664	660,013	546,709	441,165	396,119	279,934	84,579
M	CANADA	669,422	607,619	658,467	705,445	630,408	609,755	596,238	440,736	498,180	466,386	301,766	243,537	256,484	273,650	117,767
M	KOREA	210,616	136,752	144,080	191,717	183,054	152,181	232,126	152,395	223,183	152,802	210,279	102,086	235,614	134,293	85,145
M	RUSSIA	13,712	57,701	70,755	124,047	73,451	49,268	129,421	138,282	73,983	69,715	101,369	116,637	197,812	66,193	3,757
M	MEXICO	278,115	290,863	289,838	278,552	268,428	235,793	249,972	225,170	213,338	337,021	119,844	111,857	169,970	183,461	59,526
M	JAPAN	149,157	80,494	131,203	190,525	107,959	113,818	172,459	158,718	114,166	144,259	134,515	105,511	134,749	93,015	79,672
M	TURKEY	63,000	65,701	27,509	142,939	5,158	31,509	33,742	11,700	97,107	65,118	141,579	65,505	101,720	88,294	54,243
M	INDIA	117,307	117,409	105,121	110,387	111,589	46,257	72,786	87,012	215,676	69,363	83,521	111,787	73,047	46,204	60,810
M	GERMANY	78,816	88,243	76,348	133,253	89,718	118,374	106,335	66,979	95,662	83,438	66,309	75,824	93,034	34,052	31,104

The tables sort data in order of descending volume imported during last three months of Census import data, including preliminary import data.

Data Table Features

- Census reports of imports of steel mill products come from the Census Bureau's foreign trade division: http://www.census.gov/foreign-trade/Press-Release/steel_index.html
- License data are collected by the Commerce Department via licenses collected from individual import shipments. These data are aggregated, checked for outliers and errors, and used to provide early information to the public.
- The Import Monitor records imports from both sources and is updated on a regular basis, with Census data updates occurring twice a month and licensing data updates occurring weekly, as footnoted at the bottom of tables and graphs.

Data Table Features

Twice a month, Census releases import statistics on steel – first the preliminary statistics, followed by the official month’s statistics approximately two weeks later. When preliminary Census import data becomes available, it is added as a yellow column in the table.

Graph	Country	Census Data												License Data		
		JAN08	FEB08	MAR08	APR08	MAY08	JUN08	JUL08	AUG08	SEP08	OCT08	NOV08	DEC08	JAN09	FEB09	MAR09
M	WORLD	2,419,196	2,252,849	2,332,179	2,702,525	2,268,814	2,476,551	2,638,789	2,310,852	2,674,915	2,828,485	2,183,803	1,874,759	2,148,659	1,408,455	748,321
M	CHINA	247,663	214,676	220,440	163,873	261,950	334,487	322,481	447,406	515,664	660,013	546,709	441,165	396,119	243,428	280,157
M	CANADA	669,422	607,619	658,467	705,445	630,408	609,755	596,238	440,736	498,180	466,386	301,766	243,537	256,484	274,567	273,654
M	KOREA	210,616	136,752	144,080	191,717	183,054	152,181	232,126	152,395	223,183	152,802	210,279	102,086	235,614	134,293	85,148
M	RUSSIA	13,712	57,701	70,755	124,047	73,451	49,208	129,421	138,282	73,983	69,715	101,369	116,637	197,812	59,665	66,193
M	MEXICO	278,115	290,863	289,838	278,552	268,428	235,793	249,972	225,170	213,338	337,021	119,844	111,857	169,970	175,710	183,461
M	JAPAN	149,157	80,494	131,203	190,525	107,959	113,818	172,459	158,718	114,166	144,259	134,515	105,511	134,749	90,261	93,016
M	TURKEY	63,000	65,701	27,509	142,939	5,158	31,509	33,742	11,700	97,107	65,118	141,579	65,505	101,720	61,068	88,294
M	INDIA	117,307	117,409	105,121	110,387	111,589	46,257	72,786	87,012	215,676	69,363	83,521	111,787	73,047	68,071	46,222
M	GERMANY	78,816	109,964	52,342	156,464	92,846	154,488	96,617	80,865	96,878	105,606	34,085	101,281	39,550	59,265	56,414
M	BRAZIL	116,494	109,964	52,342	156,464	92,846	154,488	96,617	80,865	96,878	105,606	34,085	101,281	39,550	59,265	56,414

Licensing data are reported for the same month as preliminary data, and both are replaced in the table with Census final data when it is released monthly.

Types of Data Views Available

The Import Monitor offers three primary categories to view steel mill import data:

- Product view
- Country view
- Harmonized Tariff Schedule (HTS) view

Types of Data Views – Product View

The product view offers 15 months of Census and license import data displaying country of origin detail for all steel mill products...

US Imports of Steel Mill Products

FOR All Steel Mill Products

Quantity in Metric Tons

Same Table - US Dollars

Same Table - Average Unit Value

'C & A' = Carbon and Alloy products, 'S' = Stainless products

Graph	Country	Census Data										
		JAN08	FEB08	MAR08	APR08	MAY08	JUN08	JUL08	AUG08	SEP08	OCT08	NOV08
M	WORLD	2,419,196	2,252,849	2,332,179	2,702,525	2,268,814	2,476,551	2,638,789	2,310,852	2,674,915	2,828,485	2,183,803
M	CHINA	247,663	214,676	220,440	163,873	261,950	334,487	322,481	447,406	515,664	660,013	546,709
M	CANADA	669,422	607,619	658,467	705,445	630,408	609,755	596,238	440,736	498,180	466,386	301,766
M	KOREA	210,616	136,752	144,080	191,717	183,054	152,181	232,126	152,395	223,183	152,802	210,279
M	MEXICO	278,115	290,863	289,838	278,552	268,428	235,793	249,972	225,170	213,338	337,021	119,844
M	RUSSIA	13,712	57,701	70,755	124,047	73,451	49,268	129,421	138,282	73,983	69,715	101,369
M	JAPAN	149,157	80,494	131,203	190,525	107,959	113,818	172,459	158,718	114,166	144,259	134,515
M	INDIA	117,307	117,409	105,121	110,387	111,589	46,257	72,786	87,012	215,676	69,363	83,521

US Imports of Steel Mill Products

FOR Sheets Hot Rolled -- C & A

Quantity in Metric Tons

Same Table - US Dollars

Same Table - Average Unit Value

'C & A' = Carbon and Alloy products, 'S' = Stainless products

Graph	Country	Census Data										
		JAN08	FEB08	MAR08	APR08	MAY08	JUN08	JUL08	AUG08	SEP08	OCT08	NOV08
M	WORLD	219,120	225,957	173,798	246,790	238,641	223,417	218,168	206,031	239,696	214,943	138,091
M	CANADA	114,230	80,885	67,809	97,191	87,702	74,384	77,701	55,903	63,022	52,748	26,335
M	KOREA	30,425	56,212	57,670	58,024	63,872	65,394	65,585	35,430	60,625	32,048	55,897
M	MEXICO	4,846	7,094	8,609	8,413	5,092	4,589	4,848	5,402	8,621	15,071	15,978
M	AUSTRALIA	52,069	48,934	21,898	29,824	51,536	44,020	40,881	55,800	68,399	62,865	22.6
M	TURKEY	.	0.49	138.0
M	SWEDEN	4,829	2,439	3,017	2,489	2,884	5,359	2,248	4,078	3,333	1,116	8,668
M	FRANCE	6,737	3,704	1,237	7,591	6,570	3,999	2,667	6,181	5,861	4,801	4,761

... or a specific steel mill product group. Product groups use 10 digit HTS codes to categorize steel mill products by type of product.

Types of Data Views – Country View

The country view offers 15 months of import data displaying steel mill product group detail for all countries...

US Imports of Steel Mill Products

FROM WORLD

Quantity in Metric Tons

[Same Table - US Dollars](#)

[Same Table - Average Unit Value](#)

'C & A' = Carbon and Alloy products, 'S' = Stainless products

Graph	Product	Census Data											
		JAN08	FEB08	MAR08	APR08	MAY08	JUN08	JUL08	AUG08	SEP08	OCT08	NOV08	DEC08
All Steel Mill Products													
M	All Steel Mill Products	2,419,196	2,252,849	2,332,179	2,702,525	2,268,814	2,476,551	2,638,789	2,310,852	2,674,915	2,828,485	2,183,803	1,874,759
Carbon and Alloy Products													
M	All Carbon and Alloy Products	2,336,651	2,166,107	2,243,699	2,611,246	2,177,715	2,389,365	2,542,842	2,226,981	2,603,831	2,749,004	2,110,094	1,814,790
M	Oil Country Goods -- C & A	193,894	133,794	199,844	171,527	207,309	236,157	284,014	289,382	428,530	471,961	506,839	417,652
M	Line Pipe -- C & A	277,392	263,219	248,313	255,591	244,650	257,202	255,925	169,805	253,012	257,104	232,739	205,688
M	Blooms, Billets and Slabs -- C & A	408,530	491,765	403,963	670,189	402,592	539,563	590,893	438,335	439,520	557,864	158,181	186,097
M	Sheets Hot Rolled -- C & A	219,120	225,957	173,798	246,790	238,641	223,417	218,168	208,031	239,696	214,943	138,091	137,436
M	Sheets & Strip Galv Hot Dipped -- C & A	135,159	102,648	151,644	104,324	197,727	123,255	147,047	132,566	179,810	157,402	108,878	112,357

US Imports of Steel Mill Products

FROM CANADA

Quantity in Metric Tons

[Same Table - US Dollars](#)

[Same Table - Average Unit Value](#)

'C & A' = Carbon and Alloy products, 'S' = Stainless products

Graph	Product	Census Data											
		JAN08	FEB08	MAR08	APR08	MAY08	JUN08	JUL08	AUG08	SEP08	OCT08	NOV08	DEC08
All Steel Mill Products													
M	All Steel Mill Products	669,422	607,619	658,467	705,445	630,408	609,755	596,238	440,736	498,180	466,386	301,766	243,537
Carbon and Alloy Products													
M	All Carbon and Alloy Products	667,622	605,886	656,494	703,524	628,640	607,765	594,762	439,312	496,332	464,757	300,453	242,592
M	Sheets Hot Rolled -- C & A	114,230	80,885	67,809	97,191	87,702	74,384	77,701	55,903	63,022	52,748	26,335	30,632
M	Plates in Coils -- C & A	52,835	46,087	65,681	67,264	53,974	49,284	55,813	42,191	55,058	41,536	37,475	24,812
M	Sheets & Strip Galv Hot Dipped -- C & A	42,272	45,025	48,476	48,090	49,118	40,467	39,219	34,165	43,881	37,884	27,525	22,389
M	Bars/Hot rolled -- C & A	47,655	38,831	47,506	51,266	48,826	48,536	47,307	34,887	31,297	37,323	26,958	27,620
M	Wire Rods -- C & A	43,264	38,718	31,372	37,878	37,369	32,246	31,662	30,141	31,736	25,370	20,658	19,887

... or a specific country.

Types of Data Views – Product and Country Views

The product and country views can also be displayed in three different units of measurement: volume in metric tons, entered customs value in US dollars, and average unit value per metric ton.

US Imports of Steel Mill Products

FOR All Steel Mill Products

Entered Customs Value in Thousands of US Dollars

Same Table - Metric Tons

Same Table - Average Unit Value

'C & A' = Carbon and Alloy products, 'S' = Stainless products

Graph	Country	Census Data						
		FEB08	MAR08	APR08	MAY08	JUN08	JUL08	AUG08
M	WORLD	\$2,327,430	\$2,531,852	\$2,857,895	\$2,725,776	\$3,097,491	\$3,501,267	\$3,174,174
M	CHINA	\$258,085	\$261,272	\$239,040	\$326,736	\$424,598	\$435,198	\$574,174
M	CANADA	\$519,215	\$599,549	\$658,583	\$675,358	\$726,359	\$724,957	\$660,174
M	KOREA	\$112,545	\$123,248	\$169,135	\$166,976	\$149,151	\$245,538	\$188,174
M	MEXICO	\$255,488	\$256,028	\$266,544	\$293,192	\$279,185	\$330,606	\$300,174
M	RUSSIA	\$37,174	\$48,249	\$87,993	\$55,833	\$38,789	\$122,084	\$133,174

US Imports of Steel Mill Products

FROM WORLD

Average Unit Value in US\$ per Metric Ton

Same Table - Metric Tons

Same Table - US Dollars

'C & A' = Carbon and Alloy products, 'S' = Stainless products

Graph	Product	Census Data						
		FEB08	MAR08	APR08	MAY08	JUN08	JUL08	AUG08
								All Steel Mill Products
M	All Steel Mill Products	\$1,033	\$1,086	\$1,057	\$1,201	\$1,251	\$1,327	\$1,374
								Carbon and Alloy Products
M	All Carbon and Alloy Products	\$887	\$934	\$923	\$1,038	\$1,102	\$1,181	\$1,232
M	Oil Country Goods -- C & A	\$1,085	\$1,175	\$1,226	\$1,243	\$1,347	\$1,506	\$1,510
M	Line Pipe -- C & A	\$1,237	\$1,205	\$1,275	\$1,304	\$1,325	\$1,368	\$1,371
M	Blooms, Billets and Slabs -- C & A	\$605	\$593	\$624	\$742	\$822	\$900	\$1,002
M	Sheets Hot Rolled -- C & A	\$591	\$641	\$681	\$763	\$862	\$953	\$995

Types of Data Views – HTS View

The HTS view displays the volume and average unit value for the most recent 4 months of license import data for all 6 digit HTS codes...

US Imports of Steel Mill Products
 HTS Code All Products
 FROM WORLD
 Quantities in Metric Tons

Product	HTS Description	DEC08		JAN09		FEB09		MAR09	
		Tons	AUV (\$/ton)	Tons	AUV (\$/ton)	Tons	AUV (\$/ton)	Tons	AUV (\$/ton)
All Products	All Products	1,841,665.7	\$1,487.86	2,073,751.0	\$1,372.54	1,506,703.8	\$1,278.29	1,102,035.0	\$1,314.27
730429	CASING AND TUBING,OIL,GAS DRILLING, IRON OR STEEL	289,500.0	\$1,966.21	280,613.2	\$2,075.78	178,663.9	\$1,964.36	100,019.8	\$2,102.83
720712	SMFD IR/NAL STL LT. 25 PCT CRB RECT CS WID 2X THK	152,399.0	\$649.79	148,238.5	\$571.93	78,942.2	\$578.42	35,010.1	\$426.43
730629	Casing/Tubing,I/S, Wld O/T Ss, Riveted Or Sim Clsd, Nes, For Oil/Gas Drilling	99,688.0	\$1,474.46	126,032.5	\$1,365.01	82,346.1	\$1,242.24	49,149.1	\$1,228.83
720839	FLAT-HOT-ROLL IRN,NONALY STL,COIL,>3MM THICK,NESOI	70,838.5	\$672.28	67,173.5	\$571.47	83,624.5	\$541.83	49,651.8	\$566.07
721049	FR IR/NAS CTD/PLTD W ZINC NT ELEC NT CORR 600MM OM	83,626.7	\$1,089.66	74,315.5	\$980.38	49,185.1	\$913.89	54,182.5	\$781.11
730630	PIPE ETC NESOI, WELD CIR CR SECT, IRON OR NONAL ST	83,671.2	\$1,674.53	86,406.2	\$1,305.30	38,649.9	\$1,248.76	29,923.8	\$1,286.52

US Imports of Steel Mill Products
 HTS Code 730429
 (CASING AND TUBING,OIL,GAS DRILLING, IRON OR STEEL)
 Quantities in Metric Tons

[Product groups covered by HTS Code 730429](#)

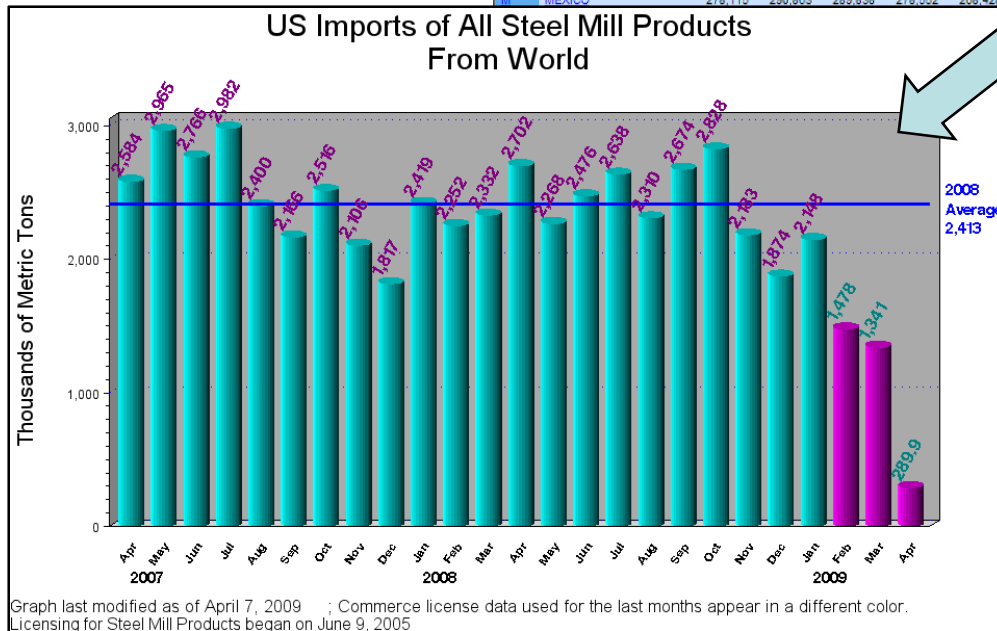
Country	DEC08		JAN09		FEB09		MAR09	
	Tons	AUV (\$/ton)	Tons	AUV (\$/ton)	Tons	AUV (\$/ton)	Tons	AUV (\$/ton)
WORLD	289,500.0	\$1,966.21	280,613.2	\$2,075.78	178,663.9	\$1,964.36	126,237.5	\$2,045.32
CHINA	195,125.4	\$1,701.14	176,080.4	\$1,755.64	131,061.6	\$1,735.88	68,916.1	\$1,693.42
GERMANY	9,081.9	\$2,283.58	19,407.9	\$2,499.44	1,190.2	\$3,119.29	13,905.1	\$2,048.39
JAPAN	12,668.2	\$2,284.66	12,160.4	\$2,859.10	2,386.4	\$3,693.17	12,838.3	\$2,625.94
INDIA	22,649.6	\$2,240.54	1,627.7	\$1,893.67	6,538.3	\$1,936.59	2,419.5	\$2,277.96
RUSSIA	33.8	\$1,135.70	17,207.3	\$2,102.06	8,472.1	\$2,120.18	5,316.3	\$2,100.72
ARGENTINA	12,470.4	\$2,888.55	11,378.7	\$2,954.97	3,089.8	\$2,739.95	2,329.9	\$3,414.99
AUSTRIA	7,786.8	\$2,914.31	5,819.6	\$2,822.91	5,897.3	\$2,764.07	6,107.8	\$2,698.66

... or a specific 6 digit HTS code.

Types of Data Views – Graphs

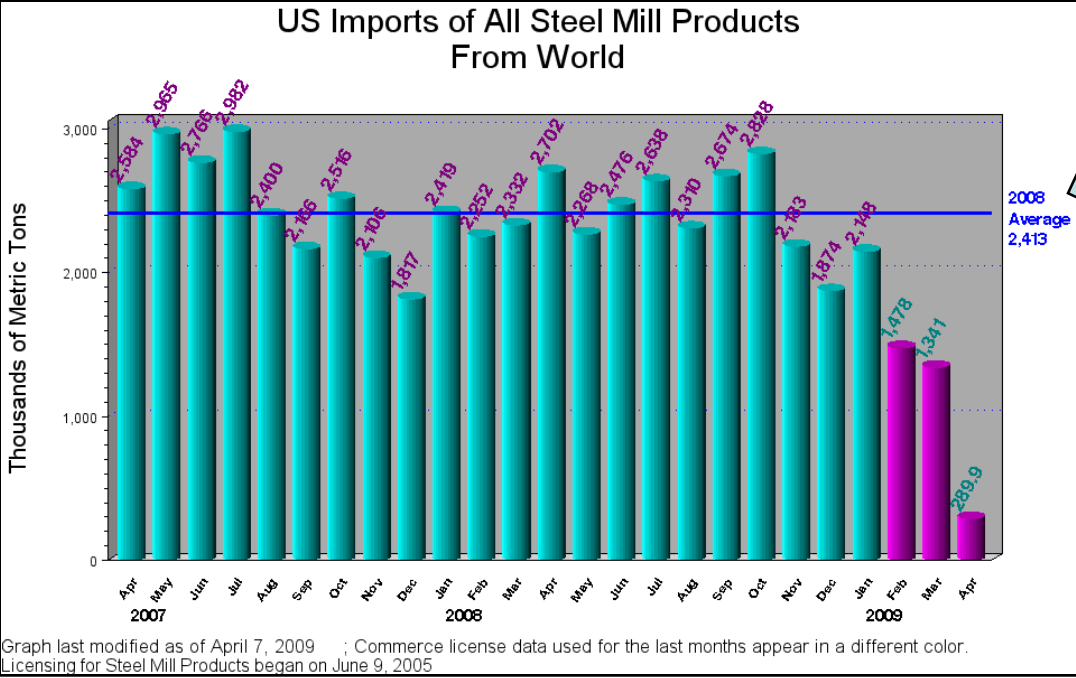
The 15 month product and country tables may also be viewed as graphs.

Graph	Country	Census Data												Preliminary Census Data	License Data		
		JAN08	FEB08	MAR08	APR08	MAY08	JUN08	JUL08	AUG08	SEP08	OCT08	NOV08	DEC08	JAN09	FEB09	FEB09	MAR09
M	WORLD	2,419,196	2,252,849	2,332,179	2,702,526	2,268,814	2,476,551	2,638,789	2,310,852	2,674,915	2,828,485	2,183,803	1,874,759	2,148,659	1,408,448	1,506,703	1,102,034
M	CHINA	247,663	214,676	220,440	163,873	261,950	334,487	322,481	447,500	515,664	660,013	546,709	441,165	396,119	243,428	280,157	111,091
M	CANADA	669,422	607,619	658,467	705,445	630,408	609,755	596,237	515,000	498,180	466,366	301,766	243,537	256,484	274,567	273,654	189,587
M	KOREA	210,616	136,752	144,080	191,717	183,054	152,181	152,395	223,183	152,802	210,279	102,086	236,614	126,019	134,293	109,525	
M	MEXICO	278,116	290,863	289,838	278,552	268,428	237,972	225,170	213,338	337,021	119,844	111,857	169,970	175,710	183,461	82,125	
								129,421	138,282	73,983	69,715	101,369	116,637	197,812	59,665	66,193	6,191
								113,818	172,459	158,718	114,166	144,259	134,515	105,511	134,749	90,261	133,604
								48,257	72,786	87,012	215,676	69,363	83,521	111,787	73,047	46,222	78,168
								31,509	33,742	11,700	97,107	65,118	141,579	65,505	101,720	61,088	67,880
								154,488	96,617	80,885	96,878	105,606	34,085	101,281	39,550	56,414	37,238



Types of Data Views – Graphs

Graphs display 25 months of combined import data, with Census data shown in blue and license data in purple.



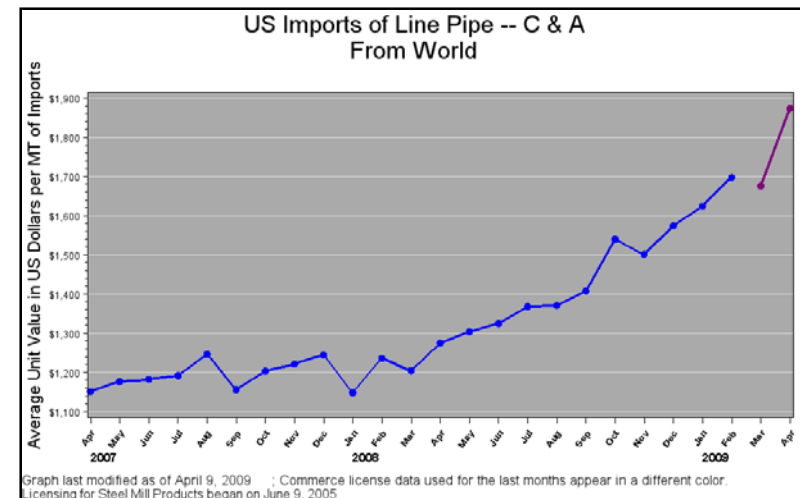
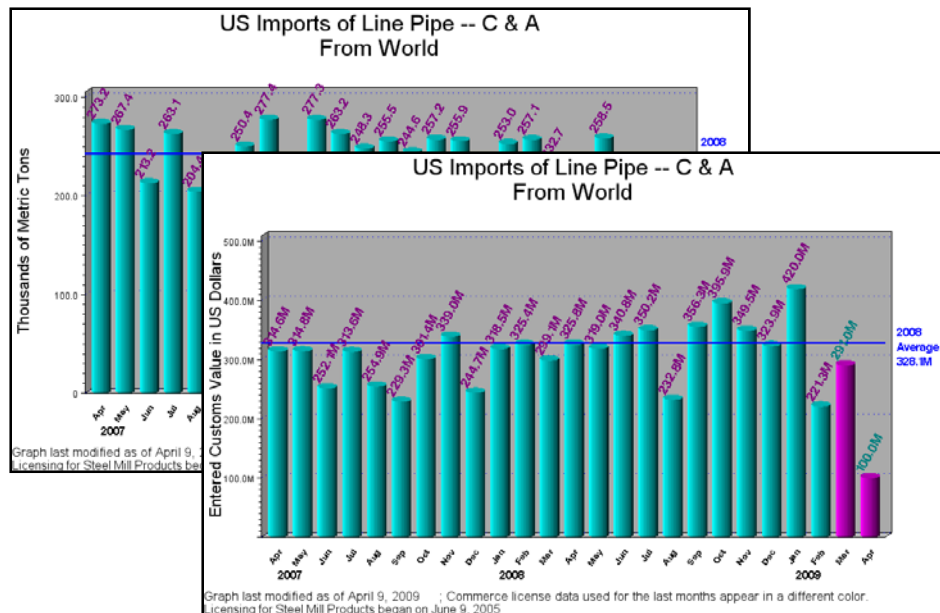
The horizontal line indicates the monthly average of import data for the previous year and is used to offer a comparison of monthly data.

Types of Data Views – Graphs

Import Monitor graphs display in two formats, depending upon the unit of measurement selected in the corresponding table.

Volume and value data are presented as bar graphs.

Average unit value data are presented as a line graph.



Additional Views

Tables are available which show the 6 digit HTS codes that make up each product group.

HTS Codes For Line Pipe -- C & A

HTS Code	Description
730419	Line Pipe, O/T Stainless Steel, Seamless, Of A Kind Used For Oil Or Gas Pipelines
730511	PIPE, OIL LINE ETC OV16IN IR ST, LONG SUB ARC WELD
730512	PIPE, OIL LINE ETC OV16IN IR OR ST, LONGI WD NESOI
730519	PIPE, OIL LINE ETC OV16IN IR OR STEEL, CLOSE NESOI
730619	Pipe, Line, Welded O/T Ss, Riveted Or Sim Closed, Nes, For Oil/Gas Pipeline

February Data Comparison: Preliminary Census and License Data (in metric tons)

Product	February 2009 Preliminary Census Data	February 2009 License Data	February 2009 Census - License	Percent Difference: License relative to Census
All Products	1,408,448	1,478,965	-70,518	(5%)
Bars-Cold Finished -- C & A	20,673	22,165	-1,492	(7%)
Bars-Cold Finished -- S	4,834	5,056	-222	(5%)
Bars-Hot rolled -- C & A	58,306	60,433	-2,127	(4%)
Bars-Hot rolled -- S	1,151	1,161	-11	(1%)

The Import Monitor also provides the option to compare licensing data with Census data for all product groups. (Table is available from the 'Detailed Data Search' link on the SIMA home page.)

Additional Views

Also available are tables detailing the percentage that each product group makes up of a 6 digit HTS category. The tables offer an historic comparison of import data using 2004 Census data and the most recent 1 year of licensing data.

In the example shown, HTS code 730431 is made up of three 10 digit codes, two of which fall into the mechanical tubing product group (7304313000 and 7304316050) and one which falls into the pressure tubing product group (7304316010).

Product Groups Included in HTS Code 730431
Based on 2004 Census Data

6-digit HTS Code	Product Groups	2004 Census Data		Licensing Data Early Warning April 2008- April 2009	
		Percentage of Product's Quantity Makes of 6-digit code	Percentage of Product's Value Makes of 6-digit code	Percentage of Product's Quantity Makes of 6-digit code	Percentage of Product's Value Makes of 6-digit code
730431	Mechanical Tubing -- C & A	56.98%	59.78%	62.61%	57.06%
	Pressure Tubing -- C & A	43.02%	40.22%	37.39%	42.94%

The percentages reflect the proportions of volume and value import data reflected by mechanical and pressure tubing for imports of HTS code 730431 in the two time periods.

A reference table matching a 10 digit code to its product group can be found on the SIMA website at: http://ia.ita.doc.gov/steel/license/SMP_byHTS-070109.pdf

Additional Views – Summary Tables

Steel import data can also be viewed using both monthly and annual summary tables.

The monthly summary tables show 15 months of data using four aggregate product categories – pipe and tube, flat products, long products, and semi-finished – for both carbon & alloy and stainless steel.

US Imports of Steel Mill Products

[FROM WORLD](#)

Quantity in Metric Tons

[Same Table - US Dollars](#)

[Same Table - Average Unit Value](#)

'C & A' = Carbon and Alloy products, 'S' = Stainless products

Graph	Product	Census Data								
		FEB08	MAR08	APR08	MAY08	JUN08	JUL08	AUG08	SEP08	
All Steel Mill Products										
M	All Steel Mill Products	2,252,849	2,332,179	2,702,525	2,268,814	2,476,551	2,638,789	2,310,852	2,674,915	
Carbon and Alloy Products										
M	All Carbon and Alloy Products	2,166,107	2,243,699	2,611,246	2,177,715	2,389,365	2,542,842	2,226,981	2,603,831	
M	Pipe and Tube -- C & A	552,279	654,565	619,979	619,322	700,715	729,027	634,602	894,405	
M	Flat Products -- C & A	640,995	694,875	703,576	752,707	687,528	740,667	691,877	885,617	
M	Long Products -- C & A	480,884	489,972	617,077	402,832	461,212	482,168	461,898	383,864	
M	Semi-Finished -- C & A	491,948	404,285	670,613	402,853	539,909	590,978	438,603	439,943	
Stainless Products										
M	All Stainless Products	86,741	88,480	91,279	91,098	87,186	95,947	83,871	71,084	
M	Flat Products -- S	47,883	47,959	48,018	48,745	44,609	48,873	40,541	33,589	
M	Pipe and Tube -- S	11,534	13,512	14,770	16,429	15,482	15,674	16,309	15,499	
M	Long Products -- S	15,193	16,324	17,716	16,753	16,900	18,976	16,586	14,517	
M	Semi-Finished -- S	12,130	10,682	10,773	9,169	10,193	12,422	10,433	7,478	

SOURCE: US Department of Commerce, Import Administration

Additional Views – Summary Tables

The annual summary tables use Census final import data to display either annual total import data...

US Imports of Steel Mill Products
FOR All Steel Mill Products
Quantity in Metric Tons

[Same Table - Annual US Dollars](#)

[Same Table - Average Unit Value](#)

[Same Table - Monthly Average Metric Tons](#)

[Same Table - Monthly Average US Dollars](#)

'C & A' = Carbon and Alloy products, 'S' = Stainless products

Country	Census Data									
	Annual Total Quantity 2001	Annual Total Quantity 2002	Annual Total Quantity 2003	Annual Total Quantity 2004	Annual Total Quantity 2005	Annual Total Quantity 2006	Annual Total Quantity 2007	Annual Total Quantity 2008	Total Quantity YTD Jan through Jan 2008	Annual Total Quantity 2009 (through January final)
WORLD	27,288,156	29,652,211	20,978,967	32,484,663	29,128,435	41,071,051	30,158,201	28,963,723	2,419,196	2,148,659
CANADA	4,227,654	5,240,952	4,826,106	4,956,358	5,351,177	5,400,093	6,110,712	6,427,963	669,422	256,484
CHINA	691,229	749,797	582,898	1,676,120	2,153,803	4,889,683	4,184,720	4,376,533	247,663	396,119
MEXICO	2,713,071	3,407,916	2,919,753	3,879,959	3,732,340	3,302,968	2,861,617	2,898,796	278,115	169,970
KOREA	2,020,063	1,676,804	1,078,978	1,490,560	1,641,953	2,534,555	1,817,951	2,091,277	210,616	235,614
JAPAN	1,862,502	1,480,181	933,065	1,279,630	1,252,290	1,905,551	1,536,058	1,602,788	149,157	134,749

Country	Census Data									
	Monthly Average Quantity 2001	Monthly Average Quantity 2002	Monthly Average Quantity 2003	Monthly Average Quantity 2004	Monthly Average Quantity 2005	Monthly Average Quantity 2006	Monthly Average Quantity 2007	Monthly Average Quantity 2008	Monthly Average Quantity YTD Jan through Jan 2008	Monthly Average Quantity 2009 (through January final)
WORLD	2,274,013	2,471,017	1,748,247	2,707,055	2,427,369	3,422,587	2,513,183	2,413,643	2,419,196	2,148,659
CANADA	352,304	436,746	402,175	413,029	445,931	450,007	509,226	535,663	669,422	256,484
CHINA	57,602	62,483	48,574	139,676	179,483	407,473	348,726	364,711	247,663	396,119
MEXICO	226,089	283,993	243,312	323,329	311,028	275,247	238,468	241,566	278,115	169,970
KOREA	168,338	139,733	89,914	124,213	136,829	211,212	151,495	174,273	210,616	235,614
JAPAN	155,208	123,348	77,755	106,635	104,357	158,795	128,004	133,565	149,157	134,749

... or monthly average import data.

Additional Views – Summary Tables

The annual summaries also provide the option to view data in additional units of measurement – volume, value, and average unit value – for both annual total tables and monthly average tables.

US Imports of Steel Mill Products
FOR All Steel Mill Products
Entered Customs Value in Thousands of US Dollars

Country	Census Data					
	Monthly Average Value 2001	Monthly Average Value 2002	Monthly Average Value 2003	Monthly Average Value 2004	Monthly Average Value 2005	Monthly Average Value 2006
WORLD	\$980,527	\$1,007,306	\$863,111	\$1,781,684	\$1,943,420	\$2,604,315
CANADA	\$182,062	\$228,667	\$220,754	\$303,906	\$356,841	\$386,315
CHINA	\$23,513	\$21,566	\$22,044	\$91,381	\$139,648	\$298,890
MEXICO	\$74,800	\$100,370	\$99,340	\$196,786	\$212,190	\$198,780
KOREA	\$64,934	\$53,125	\$39,587	\$79,763	\$106,954	\$150,955

US Imports of Steel Mill Products
FOR All Steel Mill Products
Average Unit Value in US\$ per Metric Ton


Country	Census Data					
	AUV 2001	AUV 2002	AUV 2003	AUV 2004	AUV 2005	AUV 2006
WORLD	\$422	\$408	\$494	\$658	\$801	\$761
CANADA	\$517	\$524	\$549	\$736	\$800	\$858
CHINA	\$408	\$345	\$454	\$654	\$778	\$734
MEXICO	\$330	\$353	\$408	\$609	\$682	\$722
KOREA	\$386	\$380	\$440	\$642	\$782	\$715

Additional Data – Raw License Data

The Import Monitor contains the option to export three months of the latest license data into a text file. This option allows users to generate their own data sets and graphs and is updated weekly.

The file has a “.txt” extension and is comma delimited, containing the variables country name, 6 digit HTS, quantity, value, average unit value, and month of import.

[http://hq-web03.ita.doc.gov/License/Surge.nsf/webfiles/MonthlyExport/\\$file/exportlicense.txt?op=element](http://hq-web03.ita.doc.gov/License/Surge.nsf/webfiles/MonthlyExport/$file/exportlicense.txt?op=element)



```
country,HTS_Code,quantity,value,Price,Date
"Licensing Data Through April 9, 2009",,,,,
ALGERIA,721931,0.001,100.000,100000.00,FEB2009
ALGERIA,All Products,0.001,100.000,100000.00,FEB2009
ARGENTINA,721491,0.029,36.450,1256.90,MAR2009
ARGENTINA,730419,2944.778,8788766.360,2984.53,FEB2009
ARGENTINA,730419,1078.610,3098633.450,2872.80,MAR2009
ARGENTINA,730429,3089.763,8465807.130,2739.95,FEB2009
ARGENTINA,730429,2329.906,7956596.330,3414.99,MAR2009
ARGENTINA,730431,54.938,150503.890,2739.52,FEB2009
ARGENTINA,730431,140.404,403652.070,2874.93,MAR2009
ARGENTINA,730431,93.491,235307.340,2516.90,APR2009
ARGENTINA,730439,218.197,701678.880,3215.80,FEB2009
ARGENTINA,730439,291.140,1022054.230,3510.52,MAR2009
ARGENTINA,730439,14.499,68435.000,4719.98,APR2009
ARGENTINA,730441,1.893,43416.150,22935.10,FEB2009
ARGENTINA,730441,3.479,42947.000,12344.64,APR2009
ARGENTINA,730451,60.742,189785.450,3124.45,FEB2009
ARGENTINA,730451,32.121,119396.830,3717.10,MAR2009
ARGENTINA,730459,227.256,676483.830,2976.75,FEB2009
ARGENTINA,730459,192.471,524713.820,2726.20,MAR2009
ARGENTINA,730531,28.472,344076.680,12084.74,MAR2009
ARGENTINA,730650,0.001,16.010,16010.00,MAR2009
ARGENTINA,All Products,6597.567,19016441.690,2882.34,FEB2009
ARGENTINA,All Products,4093.154,13469175.870,3290.66,MAR2009
ARGENTINA,All Products,111.469,346689.340,3110.19,APR2009
AUSTRALIA,720610,17.478,23400.000,1338.83,FEB2009
AUSTRALIA,720720,36.522,50080.800,1371.25,APR2009
AUSTRALIA,720837,3137.020,1423691.760,453.84,MAR2009
```

Additional Data – Notable Trends

SIMA also offers a statistical trend report on notable increases and decreases in steel imports. The tables use a ratio of current 3 month data to historic 9 month data to detect significant increases or decreases in steel imports by country and product. The trends are reported as a percentage change of quantity.

Notable Increases in SIMA's Steel Import Trends by Country and Product				
Country names are links to corresponding SIMA graphs				
Country	Product	Average monthly quantity January 2009 - March 2009 (metric tons)	Average monthly quantity April 2008 - December 2008 (metric tons)	Percent change from Historic to Current average quantity
FINLAND	Plates in Coils -- C & A	6,970	162	199%
TURKEY	Bars-Hot rolled -- C & A	13,420	486	660%
AUSTRALIA	Sheets & Strip Galv Hot Dipped -- C & A	5,169	944	447%
MEXICO	Sheets Cold Rolled -- C & A	14,764	5,088	190%

The notable trends report is available from the SIMA website at:
http://ia.ita.doc.gov/steel/license/smp/trends/Report_Trend.htm

Contact SIMA

SIMA Team Contact Information

Import Administration

Office of Policy

14th & Constitution Ave., NW, Suite 2837

Washington, DC 20230

Phone: (202) 482-2105

Fax: (202) 501-1377

Steel_License@ita.doc.gov

<http://ia.ita.doc.gov/steel/license>

Published 7/8/2009