



*U.S. Army Space and Missile Defense Command/
Army Forces Strategic Command*



Army Space – An Operational Perspective

COL Timothy Coffin

Deputy Commander for Operations

**U.S. Army Space and Missile Defense Command/
Army Forces Strategic Command**

**As Presented to the Space and Cyberspace Warfare Symposium
Lance P. Sijan Chapter, Air Force Association
Keystone, CO**

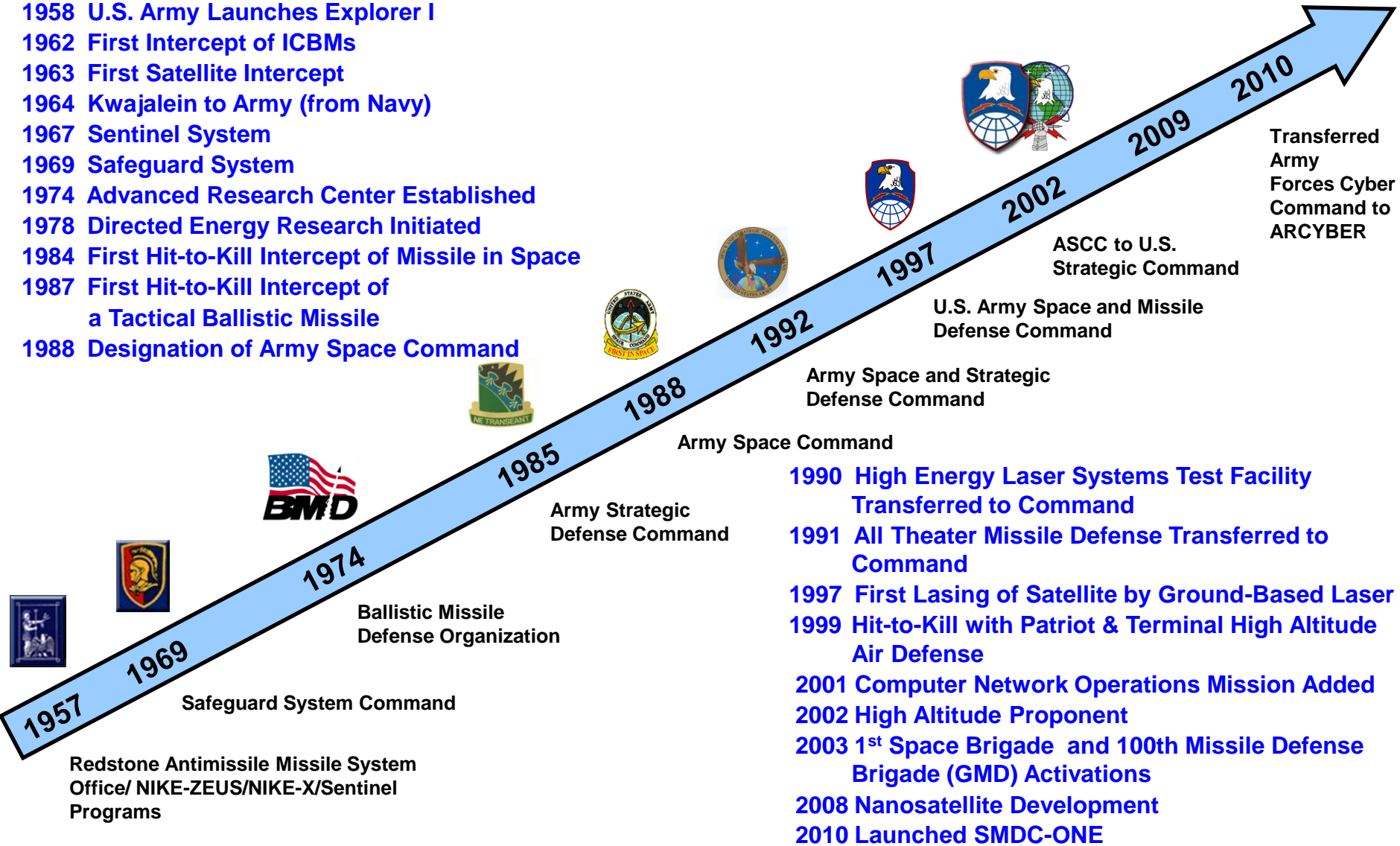
15 June 2011



U.S. Army Space and Missile Defense Command/ Army Forces Strategic Command



- 1958 U.S. Army Launches Explorer I
- 1962 First Intercept of ICBMs
- 1963 First Satellite Intercept
- 1964 Kwajalein to Army (from Navy)
- 1967 Sentinel System
- 1969 Safeguard System
- 1974 Advanced Research Center Established
- 1978 Directed Energy Research Initiated
- 1984 First Hit-to-Kill Intercept of Missile in Space
- 1987 First Hit-to-Kill Intercept of a Tactical Ballistic Missile
- 1988 Designation of Army Space Command



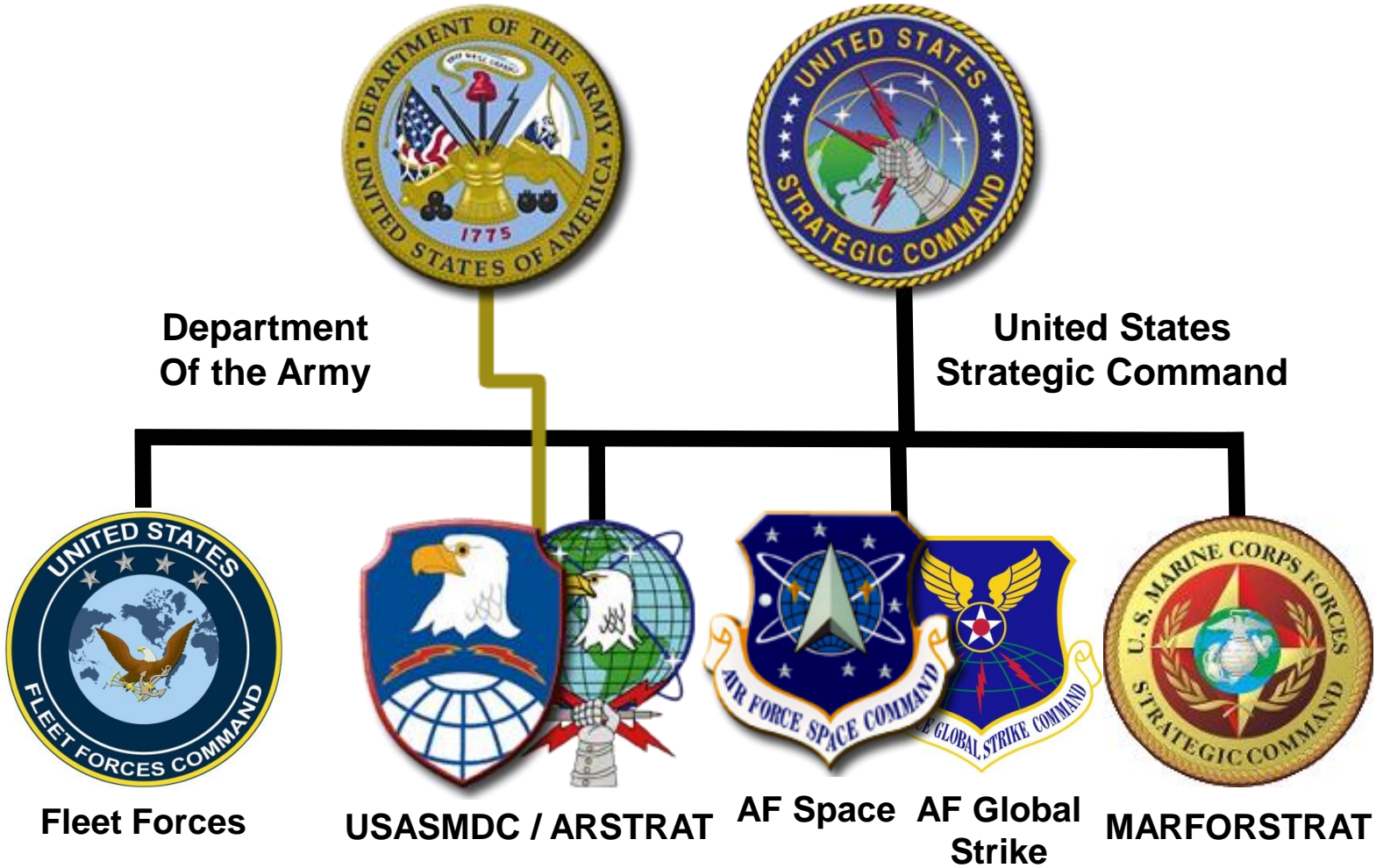
- 1990 High Energy Laser Systems Test Facility Transferred to Command
- 1991 All Theater Missile Defense Transferred to Command
- 1997 First Lasing of Satellite by Ground-Based Laser
- 1999 Hit-to-Kill with Patriot & Terminal High Altitude Air Defense
- 2001 Computer Network Operations Mission Added
- 2002 High Altitude Proponent
- 2003 1st Space Brigade and 100th Missile Defense Brigade (GMD) Activations
- 2008 Nanosatellite Development

“Secure the High Ground”

The sun never sets on USASMDC/ARSTRAT



Our Reporting Chain (Army and Combatant Command)





U.S. Army Space and Missile Defense Command/ Army Forces Strategic Command



HQ
US Strategic
Command

US Army Forces
(SMDC/ARSTRAT)



US Navy Forces
(Fleet Forces
Command)



US Air Forces
(Strike – 8th AF)
(Space – 14th AF)



US Marine Corps
Forces
(Marine Corps
Combat Development
Command)



JFCC
IMD

Army
Forces
Strategic
Command



JFCC
ISR

Defense
Intelligence
Agency



CYBER
COMMAND

National
Security
Agency



SCC-WMD

Defense
Threat
Reduction
Agency



JIOWC

Air Intel
Agency



JFCC
Global
Strike

8th Air
Force



JFCC
Space

14th Air
Force



Mission

USASMDC/ARSTRAT conducts space and missile defense operations and provides planning, integration, control and coordination of Army forces and capabilities in support of U.S. Strategic Command missions; serves as the Army force modernization proponent for space, high altitude and global missile defense; serves as the Army operational integrator for global missile defense; and conducts mission-related research and development in support of Army Title 10 responsibilities.

USASMDC/ARSTRAT Mission Essential Task List (METL)

- **Provide National Strategic Intelligence**
- **Manage Global Integrated Missile Defense Capabilities**
- **Provide Space Capabilities**
- **Provide Global C4 Services**
- **Coordinate Strategic Information Operations**
- **Conduct Force Development**



*U.S. Army Space and Missile Defense Command/
Army Forces Strategic Command*



USASMDC/ARSTRAT Core Tasks

The Army's force modernization proponent for Space, High Altitude, and Global Missile Defense; the Army's operational integrator for Global Missile Defense:

- **Provide trained and ready space and missile defense forces and capabilities to the COCOMs and to the Warfighter**
- **Build future Space and Missile Defense forces**
- **Research, test, and integrate Space, Missile Defense, directed energy, and related technologies**

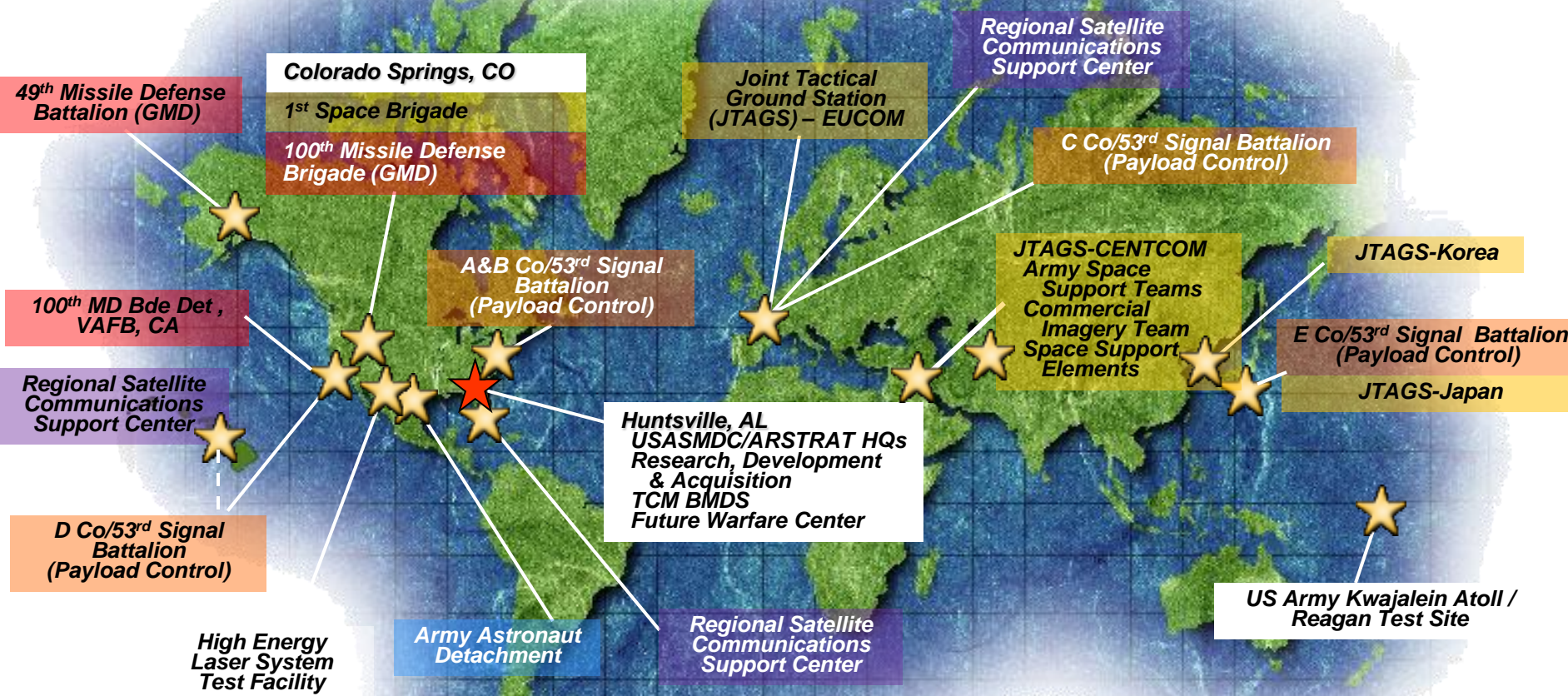


*U.S. Army Space and Missile Defense Command/
Army Forces Strategic Command*



USASMDC / ARSTRAT

A Global Command



"Secure the High Ground"

The sun never sets on USASMDC/ARSTRAT



Warfighting Concepts

- Mission command
- Movement and maneuver
- Intelligence
- Protection
- Fires
- Sustainment





Space Strategy

Our space strategy rests on three essential tenets:

- **Enable the Army's enduring mission by providing space-enabled capabilities to support of current operations and support future transformation efforts**
- **Leverage existing DOD, national, commercial and international space-based capabilities**
- **Pursue cross-domain solutions to create a resilient architecture to mitigate threats, vulnerabilities and assure access to critical capabilities needed to sustain land force operations**



Army Space Usage

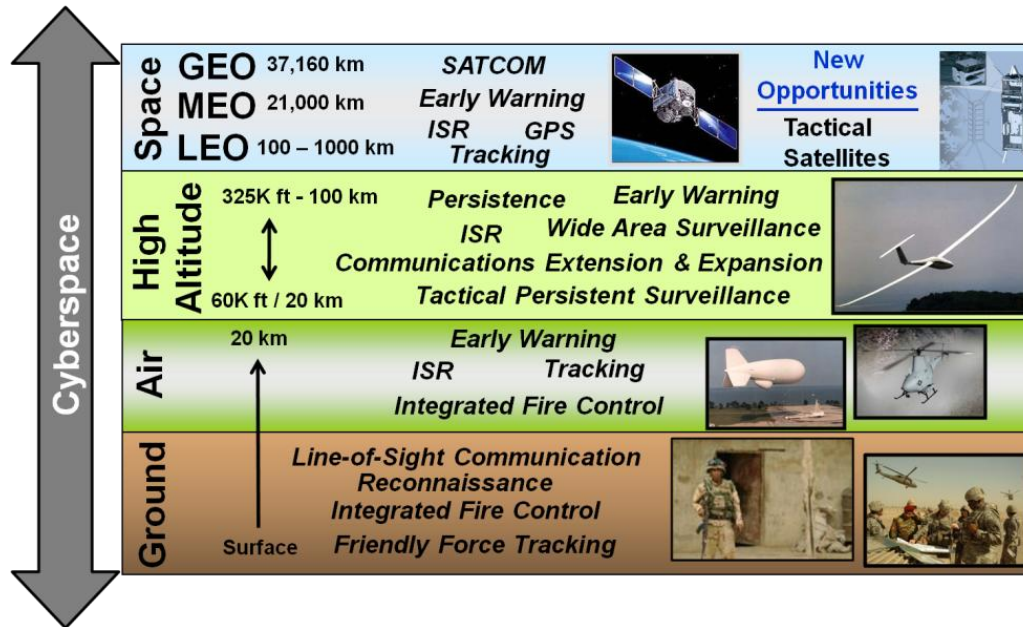
The Army is reliant on space-based systems

- **GPS**
- **Communication satellites**
- **Weather satellites**
- **Intelligence collection platforms**





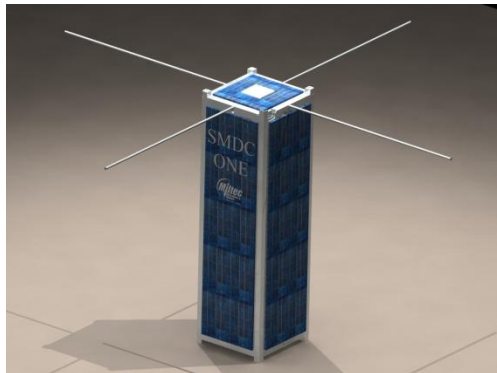
Multidomain Solutions



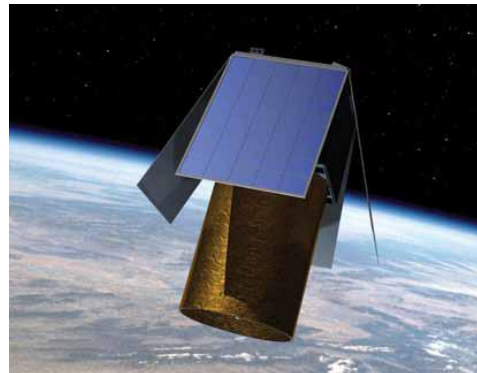


Operationally Responsive Space

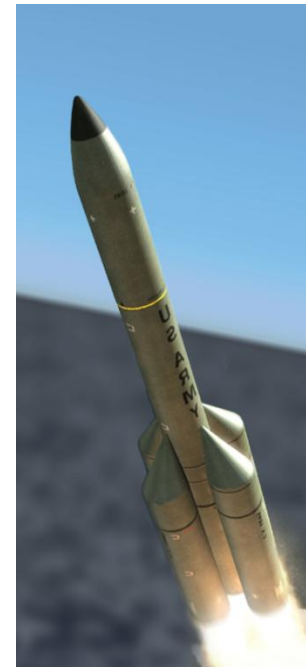
- **Nanosatellites**
 - **SMDC-ONE**
 - **Kestrel Eye**
- **Multipurpose NanoMissile System**



SMDC-ONE



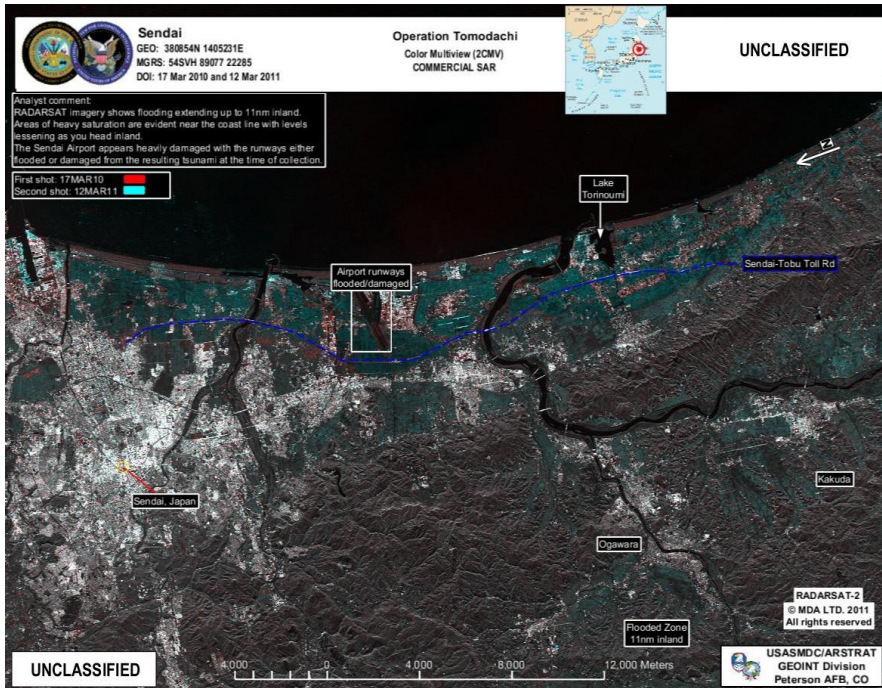
Kestrel Eye



MNMS



Japan – Libya – Alabama





Deployments

- **Army Space Support Teams**
- **Commercial Imagery Teams**
- **Space Coordination Elements**
- **Alerts for North Korean and Chinese Missile Events**





Joint Exercises

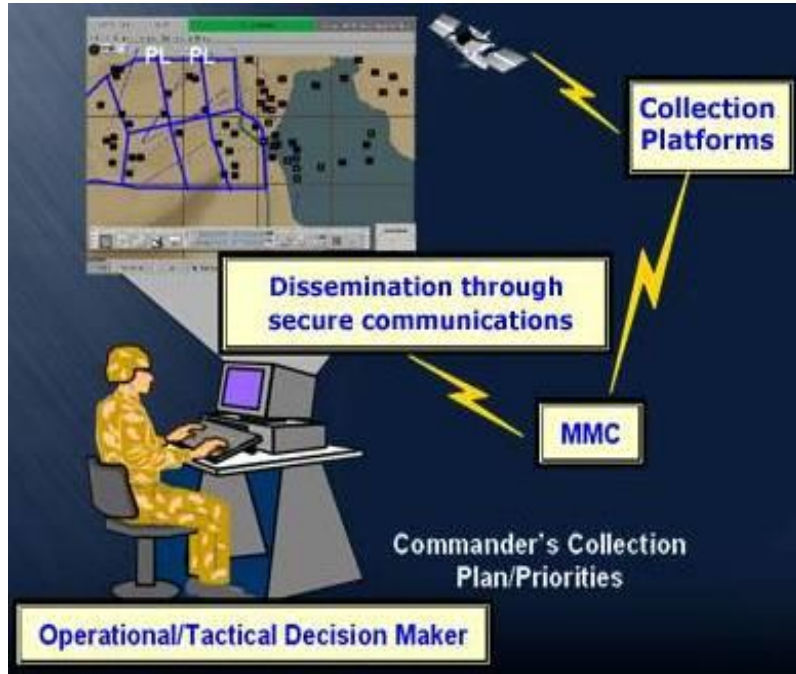
Participation includes:

- **Space-based communications**
- **Intelligence**
- **Ballistic missile early warning**





Joint Friendly Force Tracking Mission Management Center



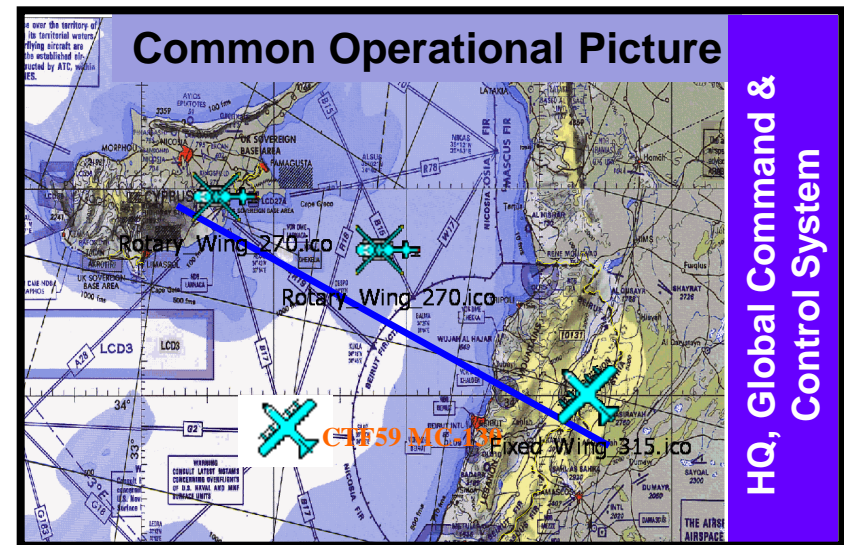
Operational Concept

- Executes the JFFT mission on behalf of USSTRATCOM
- JFFT support using national technical means and other DOD and commercial architectures

“Secure the High Ground”

Mission

Provide continuous JFFT support to combatant commanders, other government agencies, and coalition users to enable situational awareness, C2, and fratricide prevention via a Common Operational Picture (COP)



The sun never sets on USASMDC/ARSTRAT



COL Coffin's Perspective

- Importance of getting it right for forward COCOM
- Having correct policies and authorities
- Don't leave sanctuary for adversaries
- Near real-time capabilities
 - Understand battlefield
 - Rapid decisions, including approval
 - Shape and influence battlefield

