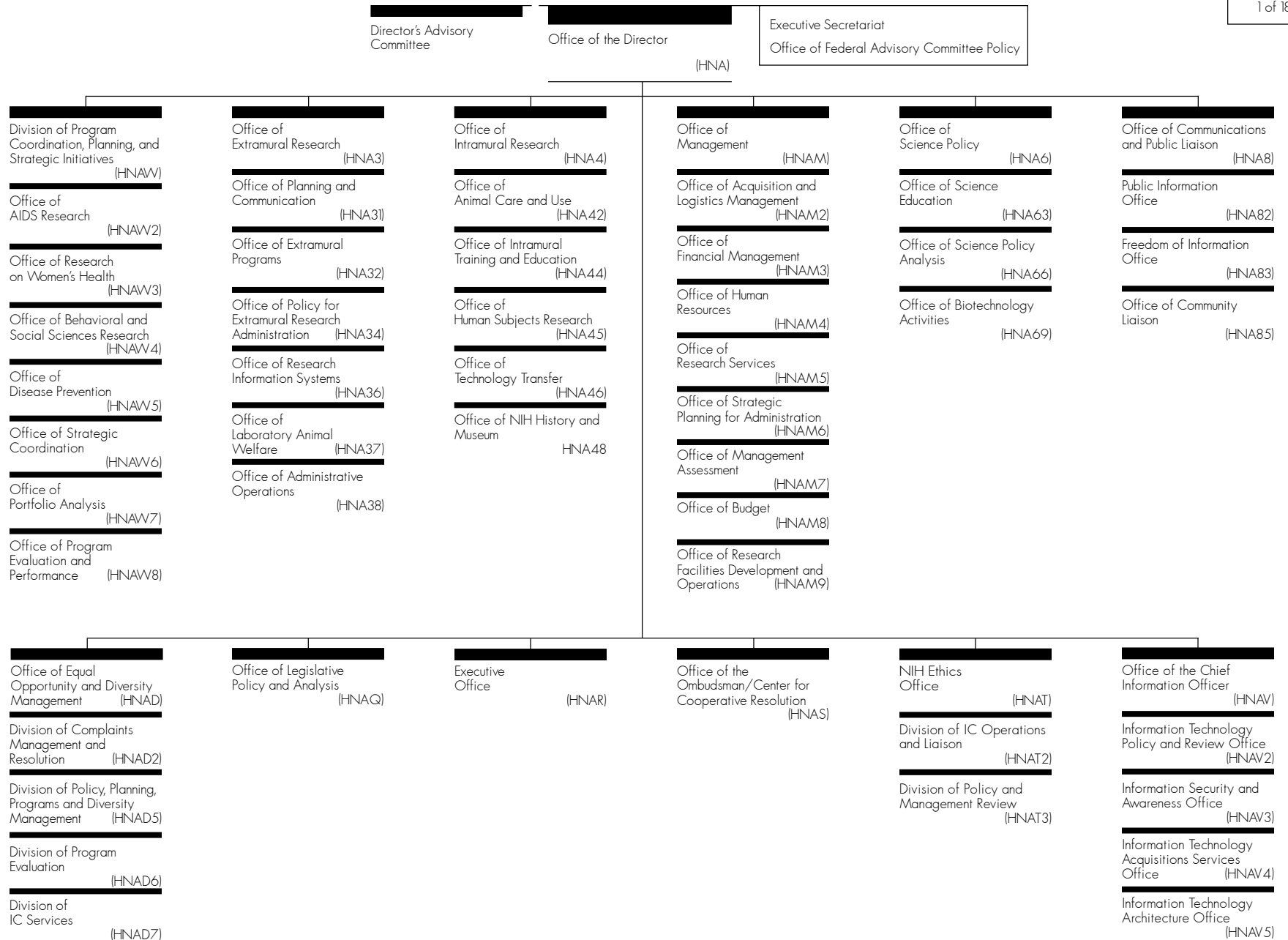


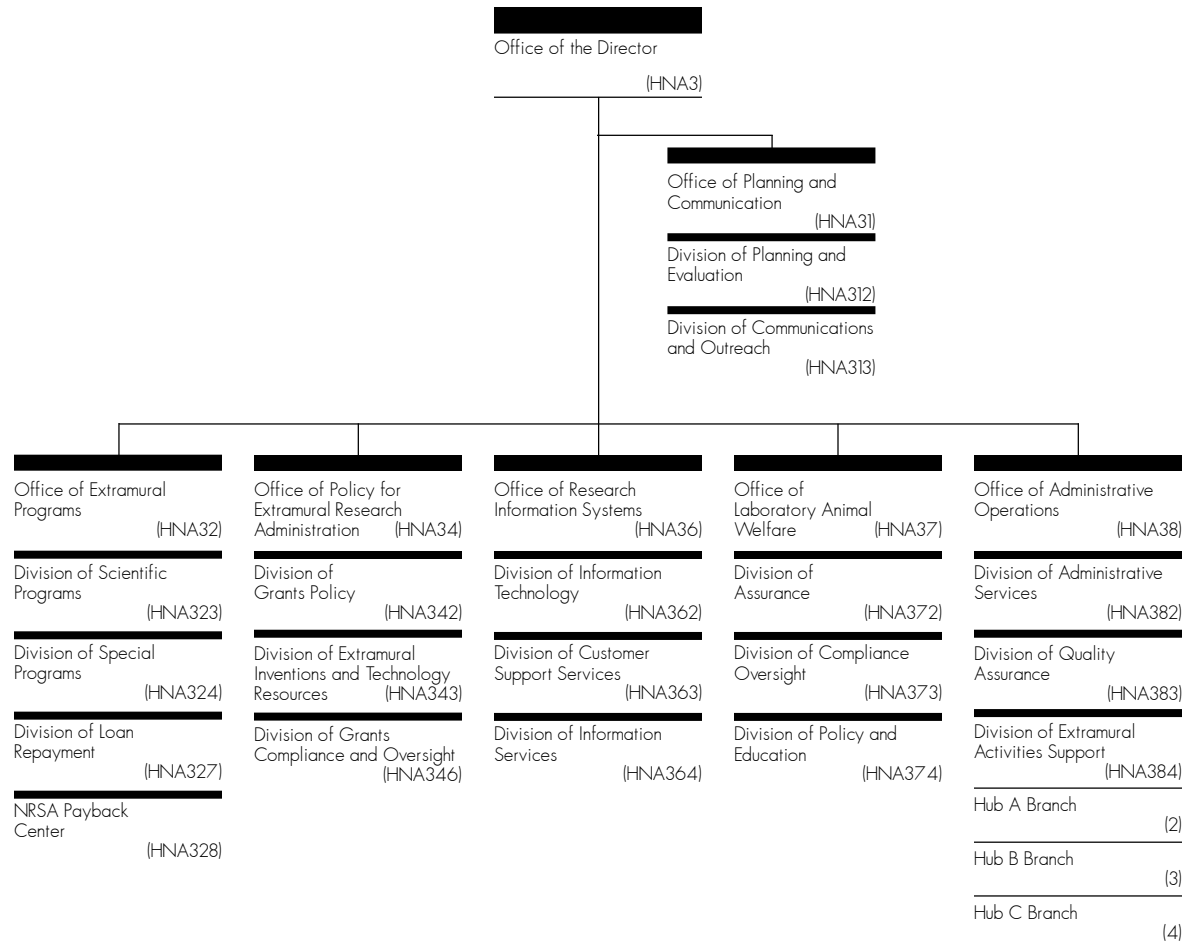
Office of the Director, NIH



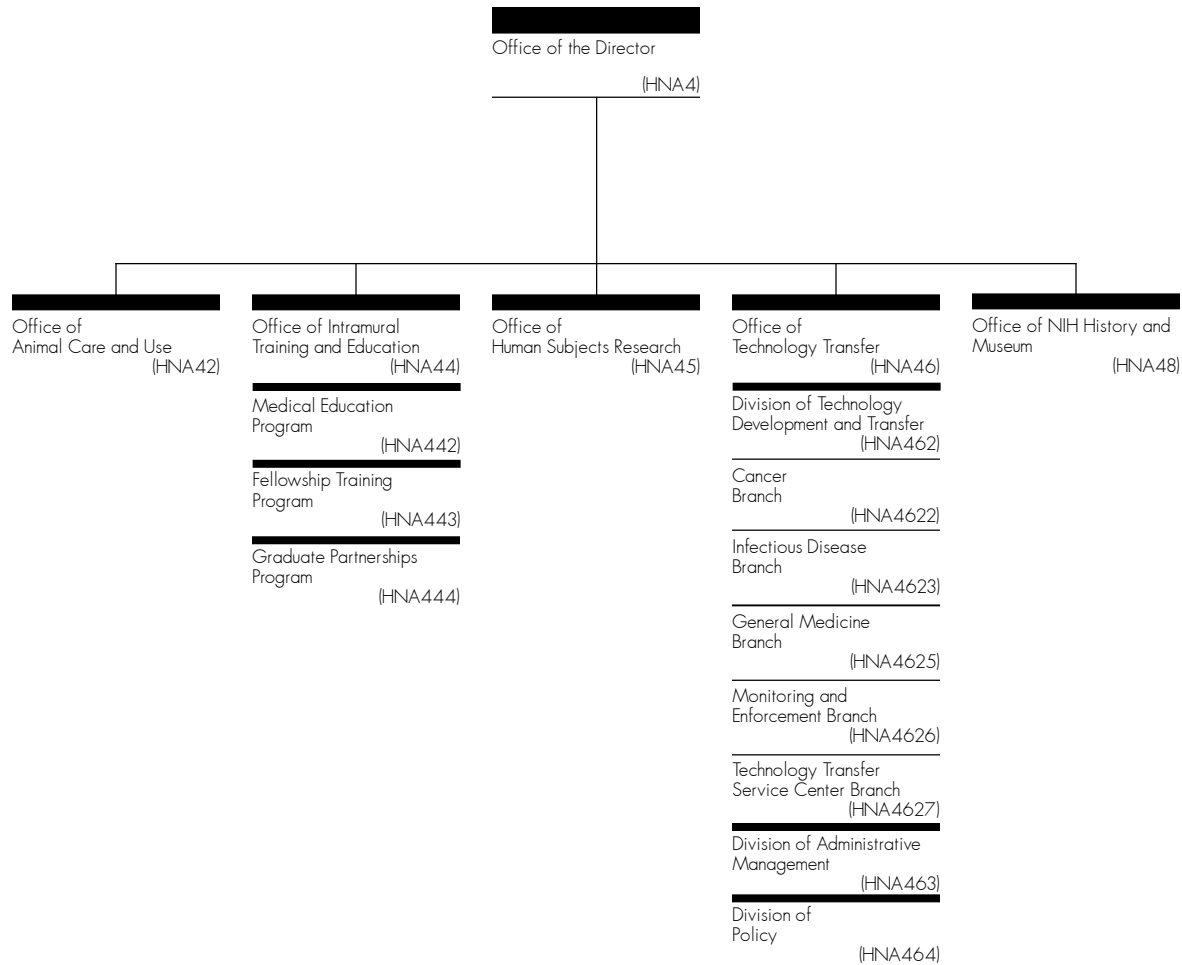
Division of Program Coordination, Planning, and Strategic Initiatives



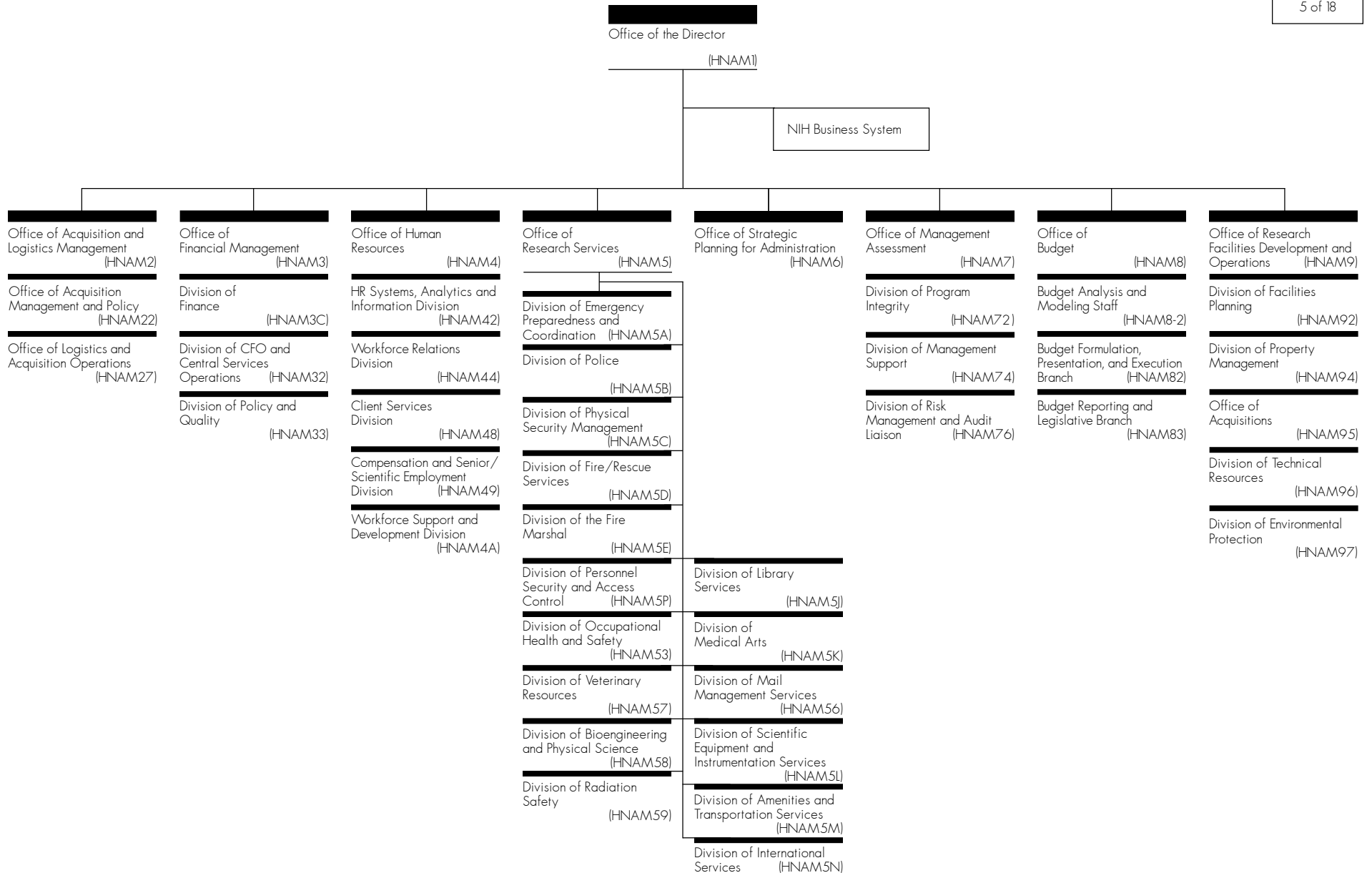
Office of Extramural Research



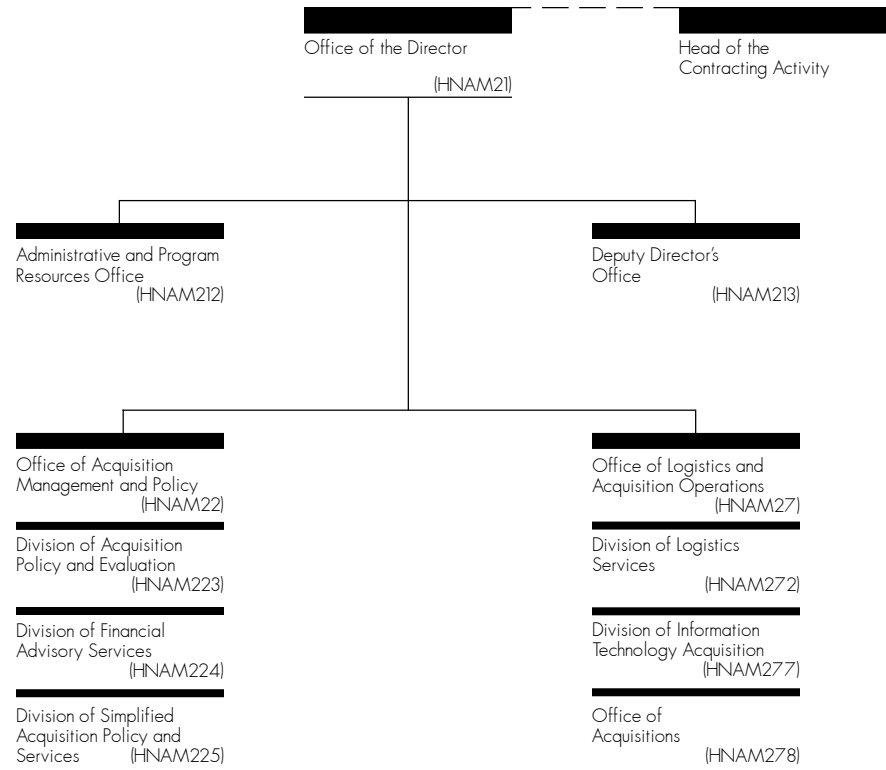
Office of Intramural Research



Office of Management



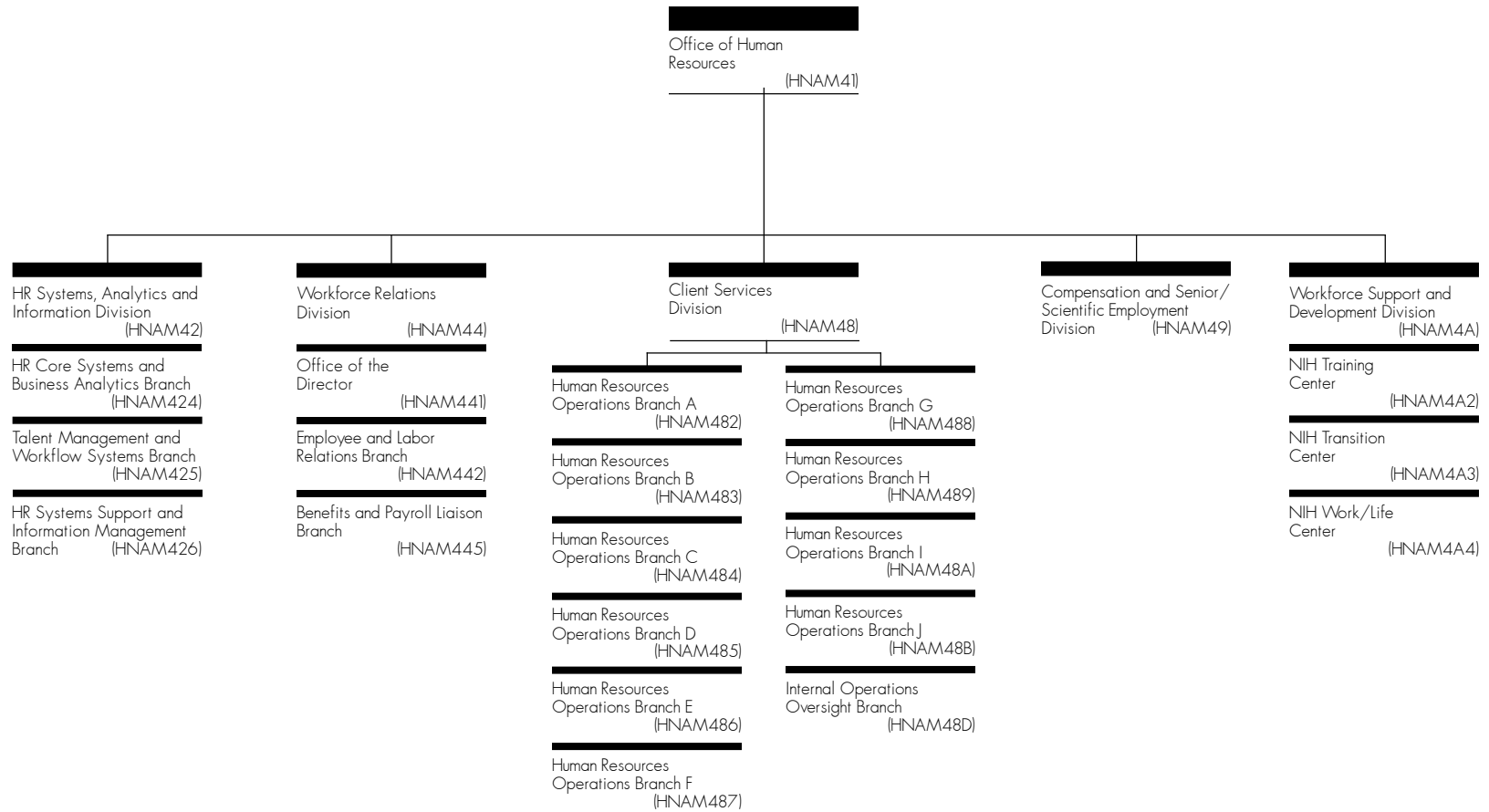
Office of Acquisition and Logistics Management



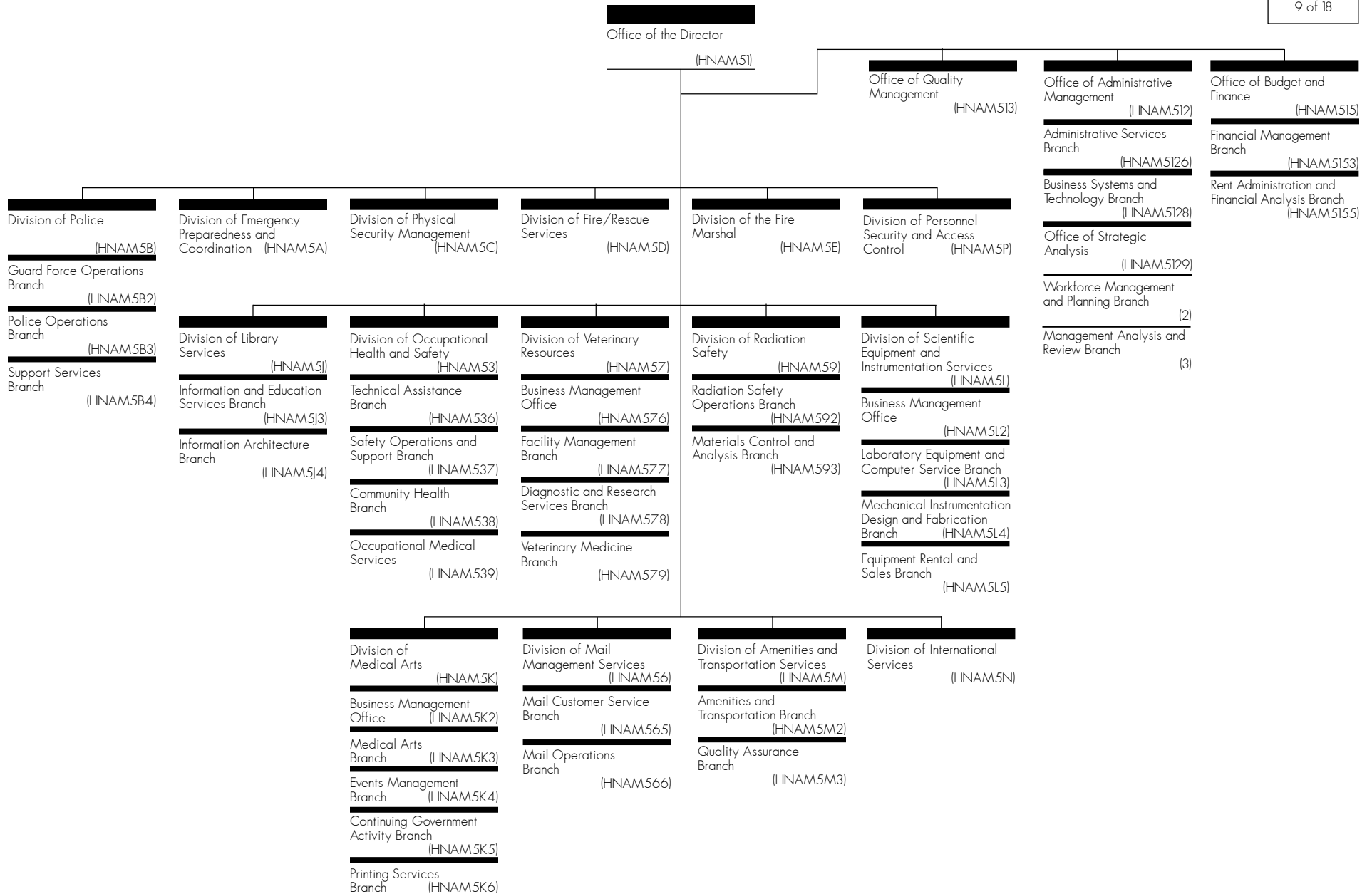
Office of Financial Management



Office of Human Resources



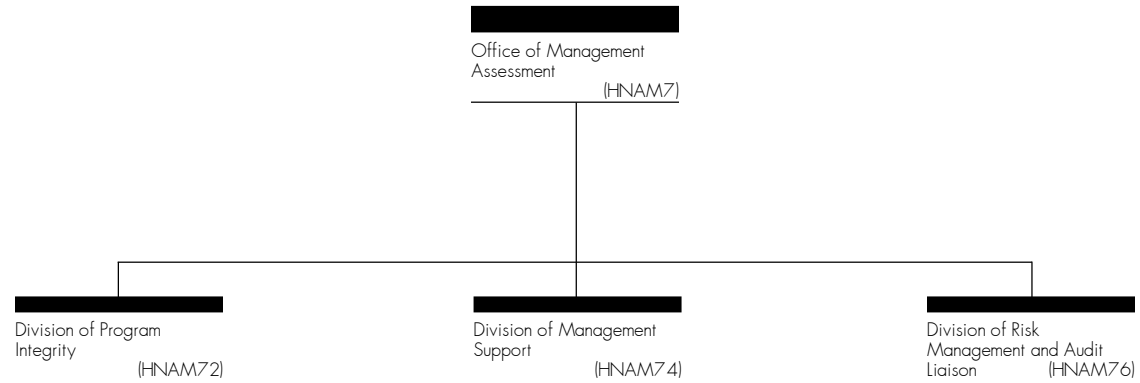
Office of Research Services



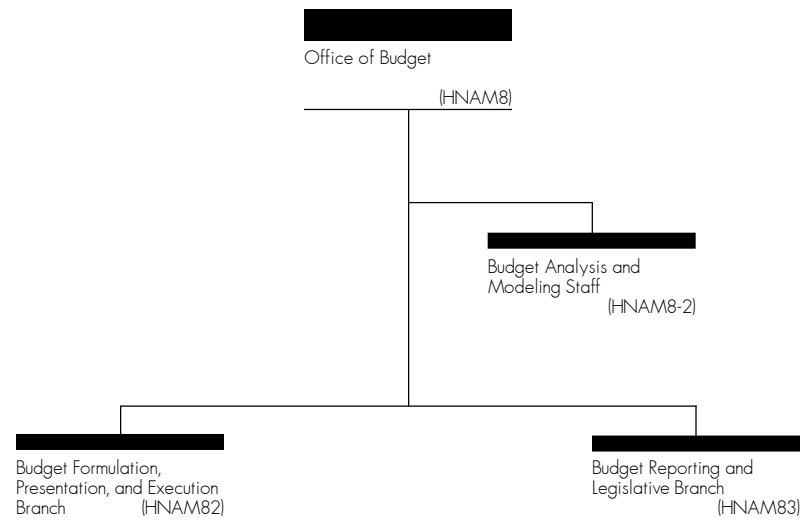
**Office of Strategic Planning
for Administration**


Office of Strategic
Planning for Administration
(HNAMÓ)

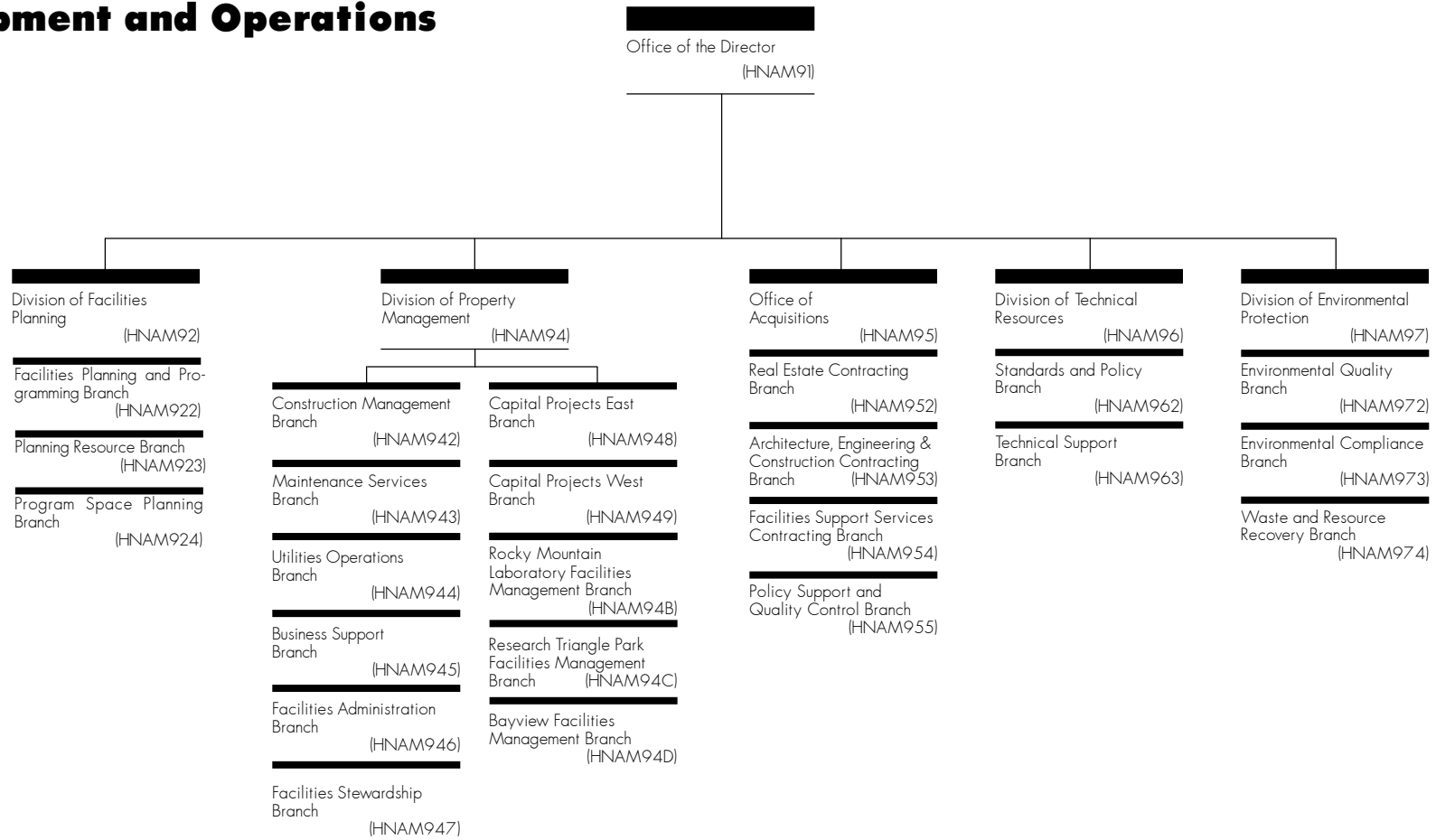
Office of Management Assessment



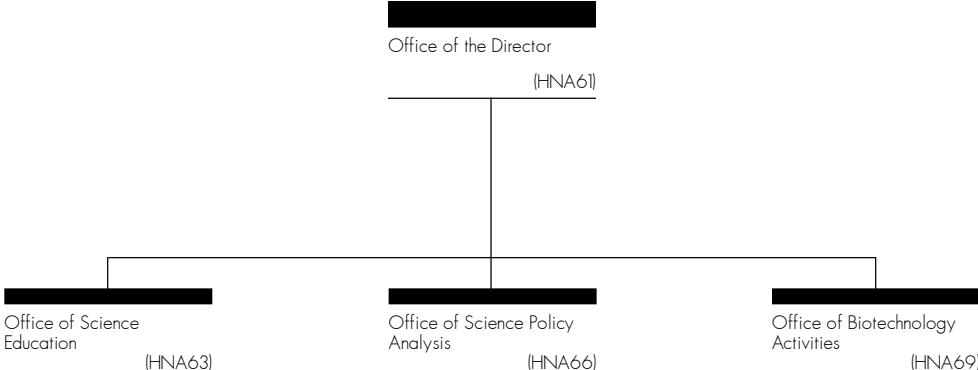
Office of Budget



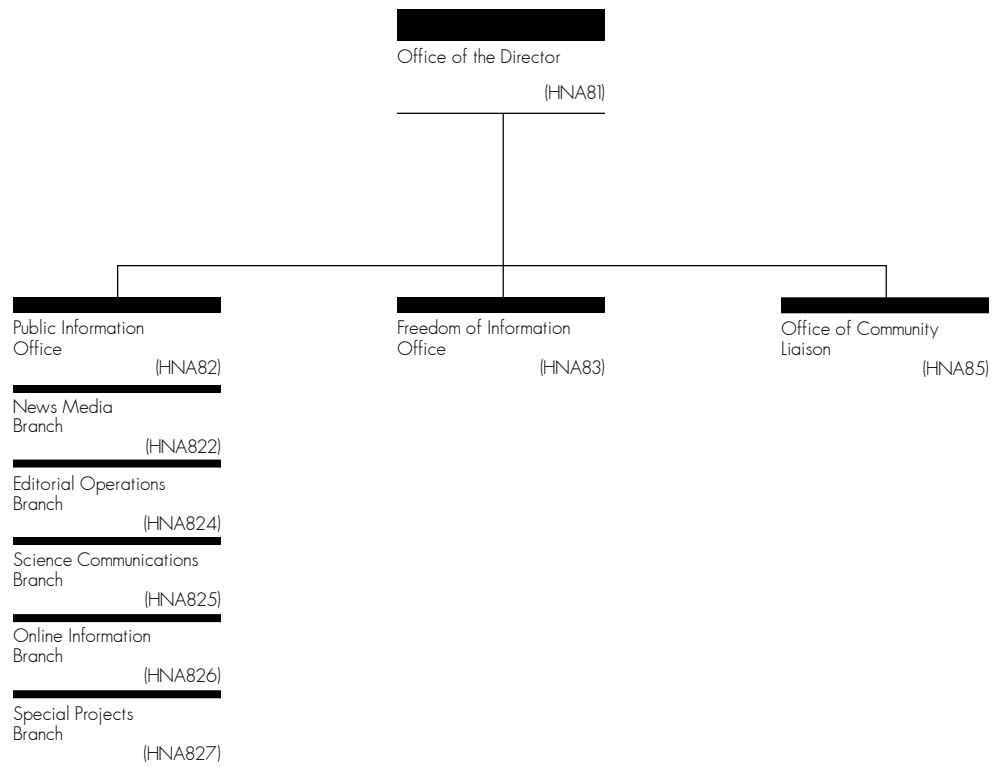
Office of Research Facilities Development and Operations



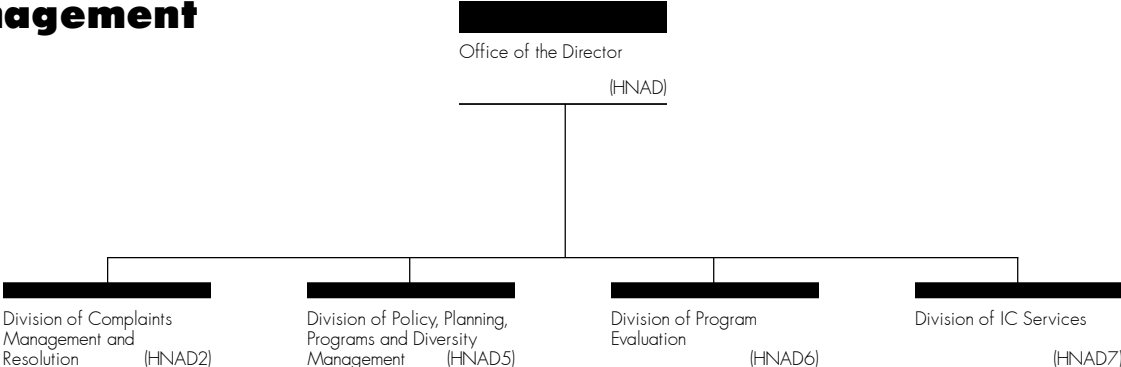
Office of Science Policy



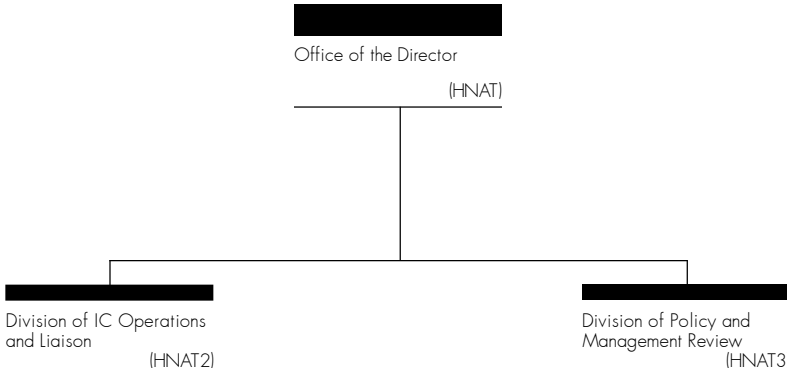
Office of Communications and Public Liaison



Office of Equal Opportunity and Diversity Management



NIH Ethics Office



Office of the Chief Information Officer

