

## BASIC CANCER RESEARCH IN CANCER HEALTH DISPARITIES (R21/U01)

### Overview

This Funding Opportunity Announcement (FOA) encourages research grant applications from investigators interested in conducting basic research into the causes and mechanisms of cancer health disparities. This FOA is also designed to facilitate the growth of a nationwide cohort of scientists with a high level of basic research expertise in cancer health disparities research who can develop resources and tools necessary for conducting such research.

### Mechanisms of Support/Awards

U01 and R21 award mechanisms will be supported by this funding opportunity. The total project period for applications using the U01 award mechanism may not exceed 5 years; direct costs are limited to \$250,000/year. The R21 award mechanism may not exceed 2 years; direct costs are limited to \$275,000 over a two-year period, with no more than \$200,000 in direct costs allowed in any single year. The U01 and R21 applications are not renewable.

### Research Objectives

Applications should focus on basic mechanistic research to investigate the biological/genetic factors associated with cancer health disparities.

### AT A GLANCE

Submission Deadlines:  
November 20, 2014

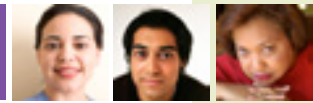
Award Budget:  
\$250,000/year direct costs for up to 5 years (U01)  
\$275,000 direct costs for up to 2 years (R21)

For this FOA, the NCI is particularly interested in the interplay of race/ethnicity and cancer biology. These awards will provide support for, developing and testing new methodologies, prevention strategies, research technology, as well as secondary analysis of existing data, self-contained research projects, and innovative studies that provide a basis for more extended research in cancer disparities. Research topics may include, but are not limited to, the following examples:

- Ethnic differences in HPV strain types/ infection prevalence;
- Polymorphisms in liver detoxification enzymes;
- Differences in gene expression profiles in triple negative breast tumors in African-American women; and
- Polymorphisms and copy number variations in key cellular processes related to cancer disparities.

For the full text of these PARs, visit:

<http://grants.nih.gov/grants/guide/pa-files/PAR-12-095.html> (U01)



## BASIC CANCER RESEARCH IN CANCER HEALTH DISPARITIES (R21/U01)

### Eligibility Requirements

Any individual(s) with the skills, knowledge, and resources necessary to carry out the proposed basic research in cancer health disparities is invited to work with his/her organization to develop an application for support as the Program Director/Principal Investigator (PD/PI). Individuals from underrepresented racial and ethnic groups as well as individuals with disabilities are always encouraged to apply for NIH support. Researchers focused on behavioral or community-based projects are not eligible for this award.

### Review

Applications will be evaluated for scientific and technical merit by (an) appropriate Scientific Review Group(s), in accordance with NIH peer review policy and procedures, using the stated review criteria. Review assignments will be shown in the eRA Commons.

### Further Assistance

#### Grants.gov Customer Support

Phone: (800) 518-4726

Email: [support@grants.gov](mailto:support@grants.gov)

#### GrantsInfo

Telephone: (301) 435-0714

Email: [grantsInfo@od.nih.gov](mailto:grantsInfo@od.nih.gov)

#### eRA Commons Help Desk

Phone: (301) 402-7469 or (866) 504-9552

Email: [commons@od.nih.gov](mailto:commons@od.nih.gov)

#### Grant Writing Tip Sheets

[http://grants.nih.gov/grants/grant\\_tips.htm](http://grants.nih.gov/grants/grant_tips.htm)

### Inquiries

#### Center to Reduce Cancer Health Disparities

Rina Das, Ph.D.

Disparities Research Branch

Center to Reduce Cancer Health Disparities

National Cancer Institute

6116 Executive Blvd., Suite 602, MSC 8341

Bethesda, MD 20892

Telephone: (301) 496-8589

Fax: (301) 435-9225

Email: [dasr2@mail.nih.gov](mailto:dasr2@mail.nih.gov)

#### Division of Cancer Biology

Phillip J. Daschner, M.Sc.

Division of Cancer Biology

National Cancer Institute

Executive Plaza North, Room 5014

6130 Executive Blvd., MSC 7344

Bethesda, MD 20892

Telephone: (301) 496-1951

Fax: (301) 496-2025

Email: [PD93U@nih.gov](mailto:PD93U@nih.gov)

#### Division of Cancer Prevention

John A. Milner, Ph.D.

Nutritional Science Research Group

Division of Cancer Prevention

National Cancer Institute

Executive Plaza North, Suite 3164

6130 Executive Blvd., MSC 7328

Bethesda, MD 20892

Telephone: (301) 496-0118

Fax: (301) 480-3925

Email: [milnerj@mail.nih.gov](mailto:milnerj@mail.nih.gov)

#### Financial/Grants Management

Crystal Wolfrey

Office of Grants Administration

National Cancer Institute

6120 Executive Blvd., EPS Suite 243, MSC 7150

Bethesda, MD 20892

Telephone: (301) 496-8634

Fax: (301) 496-8601

Email: [wolfrey@mail.nih.gov](mailto:wolfrey@mail.nih.gov)



Scan this QR code with your mobile device to go to CRCHD's home page