

## Welcome to TOXMAP<sup>®</sup>

TOXMAP is a Geographic Information System (GIS) from the National Library of Medicine (NLM).

TOXMAP creates U.S. maps to help users visually explore data from the EPA's Toxics Release Inventory (TRI) ([www.epa.gov/tri/](http://www.epa.gov/tri/)) and Superfund Programs ([www.epa.gov/superfund/](http://www.epa.gov/superfund/)).

TOXMAP allows users to customize searches in order to create nationwide, regional, or local area maps showing TRI chemicals released **on-site** into the air, water, and ground. It also identifies the releasing facilities, color-codes release amounts for a single year or year range, and provides multi-year aggregate chemical release data and trends over time, starting with 1988. Maps can also show locations of Superfund sites on the National Priority List (NPL) and all chemical contaminants present at these sites.

TOXMAP also overlays map data such as US Census demographics, income figures from the Bureau of Economic Analysis and health data from the National Cancer Institute and the National Center for Health Statistics.

NLM has an extensive collection of toxicology and environmental health references (TOXLINE<sup>®</sup>), as well as a rich resource of data on hazardous chemical substances (HSDB<sup>®</sup>) in the TOXNET<sup>®</sup> databases.

## Also from the National Library of Medicine

**Household Products Database:** Chemical ingredients in household products and manufacturer-issued safety information (<http://householdproducts.nlm.nih.gov>)

**Haz-Map<sup>®</sup>:** Occupational health information on the connection between work exposures and disease (<http://hazmap.nlm.nih.gov>)

**MedlinePlus<sup>®</sup>:** Health and drug information for consumers (<http://medlineplus.gov>)

**MEDLINE/PubMed<sup>®</sup>:** index to biomedical journals (<http://pubmed.gov>)

**Tox Town<sup>®</sup>:** Toxic chemicals and environmental health risks where you live and work (<http://toxtown.nlm.nih.gov>)

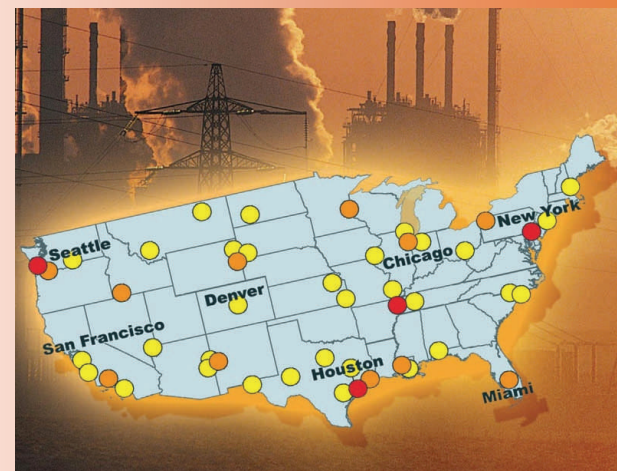
**TOXNET<sup>®</sup>:** Databases on toxic chemicals and environmental health (<http://toxnet.nlm.nih.gov>)

## National Library of Medicine Web site

(<http://www.nlm.nih.gov>)  
National Library of Medicine  
8600 Rockville Pike  
Bethesda, MD 20894  
1-888-FIND-NLM  
[tehip@tehl.nlm.nih.gov](mailto:tehip@tehl.nlm.nih.gov)



# TOXMAP<sup>®</sup>



## Mapping a Path to Environmental Health Data

[toxmap.nlm.nih.gov](http://toxmap.nlm.nih.gov)

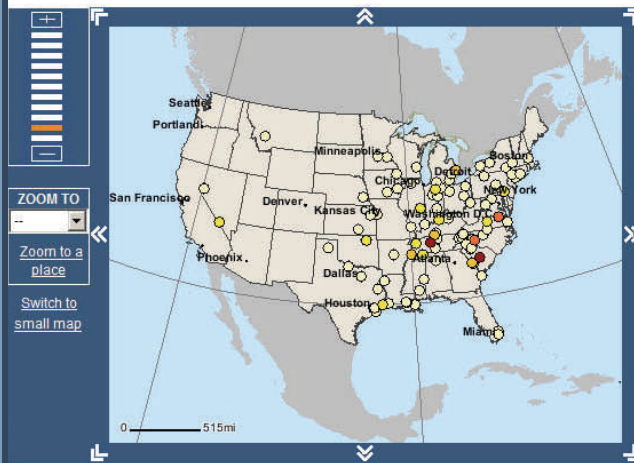
## On-site Toluene aggregate releases over 500,000 lbs from 2002-2007

Search Results [Edit Search] [Save Results] [TRI]

Show search details

Toluene (RN: 108-88-3)

TRI - 94 on-site TRI releases reported in search results



**MAP CONTROLS**

TRI [Save results] Superfund [Save results] Demographic [Save results]

None  
 Facilities : 2007  
 Releases : 2007

None  
 All NPL  
 NPL Final  
 NPL Deleted  
 NPL Proposed

None  
 Population Density - 2000

[Apply other demographics](#)

[Search chemical](#) | [Define a combo map](#) | [Start over](#)



## San Francisco area TRI facilities with details of one facility

Search Results [Edit Search] [Save Results] [TRI]

All TRI Reporting Facilities: All Chemicals

TRI - Map shows 77 of 51,235 TRI facilities reporting nationwide between 1988-2007



**7. COURTAULDS AEROSPACE** TRI Facility ID: 94710DSTNC1608F

1608 4TH ST  
BERKELEY, CA 94710-1776

Latitude: 37° 52' 29" N  
Longitude: 122° 18' 8" W

Emissions Estimates: This facility last reported in 1995.

Chemical (summary table)	Release Amount (lbs./all years)	%	Distribution By Chemical*
1) Methyl ethyl ketone	57,648	33.4%	
2) Toluene	23,379	13.5%	
3) 1,1,1-Trichloroethane	20,457	11.9%	
4) Xylene (mixed isomers)	15,484	9%	
5) Methyl isobutyl ketone	13,819	8%	
6) Other chemicals	41,783	24.2%	
<b>TOTAL</b>	<b>172,570</b>		

\*Percent may not add to 100 because of rounding.  
 \*\* Small values may not be visible on chart. Refer to the Emissions Estimates table. Mouseover bars for release percentages.

[All chemicals reported by this facility](#)  
[Releases summary table for this facility](#)

## Benzene releases and Superfund sites with Benzene in EPA Region 6, overlaid with mortality data

Search Results [Edit Search] [Save Results] [TRI] [Superfund]

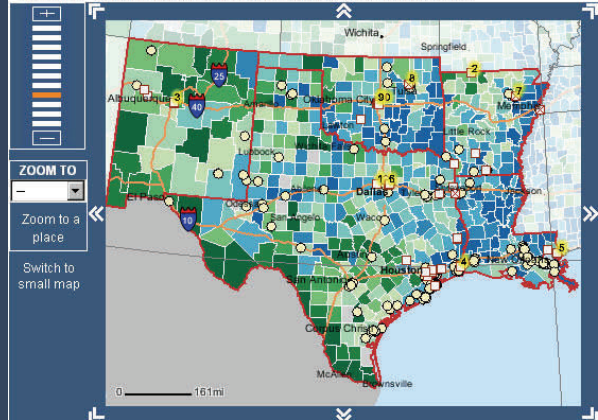
EPA Region 6

Region [Set Region] [Regional TRI Summary]: Louisiana, Arkansas, Oklahoma, New Mexico,

Benzene (RN: 71-43-2)

TRI - Map shows 206 of 206 on-site TRI releases reported in this region in 2007

Superfund - Map shows 39 of 39 NPL sites in this region with this contaminant



**MAP CONTROLS**

TRI [Save results] Superfund [Save results] Demographic [Save results]

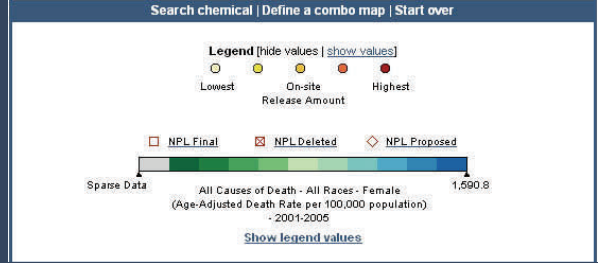
None  
 Facilities : 2007  
 Releases : 2007  
 Trends

None  
 All NPL  
 NPL Final  
 NPL Deleted  
 NPL Proposed

None  
 All Causes of Death - All Races - Female - 2001-2005

[Apply other demographics](#)

[Search chemical](#) | [Define a combo map](#) | [Start over](#)



## Use TOXMAP to:

- Locate TRI (Toxics Release Inventory) facilities and Superfund sites
- Discover on-site chemicals released in your geographic area
- Discover chemicals present at hazardous waste sites
- Map cancer mortality, US census, and other demographic data
- Save search results as text or launch them in Google Maps® and Google Earth®
- Learn about potential health effects

**1. AIR FORCE PLANT #4 (GENERAL DYNAMICS)** EPA ID Number: TX7572024605

GRANTS LANE  
FORT WORTH, TX 76108

Latitude: 32° 46' 40" N  
Longitude: 97° 27' 0" W

Status: NPL Final (08/30/1990)

Hazard Ranking System (HRS) Score: 39.92 (max. 100)

**Information about this site:**

- [EPA Progress profile](#)
- [CDC/ATSDR Documents](#)
- [EPA Contaminants list](#)
- [CDC/ATSDR Contaminants list](#)

**Alphabetical List of Contaminants**

1,1-Dichloroethane
1,2,4-Trimethyl benzene
1,2-Dichloroethane
1,3,5-Trimethylbenzene
Barium
Show All