

**FM 4-20.64** (FM 10-64)  
January 2007

---

---

## **Mortuary Affairs Operations**

---

---

---

---

**Headquarters, Department of the Army**

---

---

**DISTRIBUTION RESTRICTION:** Approved for public release; distribution is unlimited.

This publication is available at  
Army Knowledge Online ([www.us.army.mil](http://www.us.army.mil)) and  
General Dennis J. Reimer Training and Doctrine  
Digital Library at ([www.train.army.mil](http://www.train.army.mil)).

# Mortuary Affairs Operations

## Contents

	<b>Page</b>
<b>PREFACE .....</b>	<b>iv</b>
<b>Chapter 1 MORTUARY AFFAIRS OVERVIEW.....</b>	<b>1-1</b>
Mission .....	1-1
Theater Relationships .....	1-2
Theater MA Operations .....	1-3
Staff MA Responsibilities.....	1-5
Employment of MA Assets .....	1-6
Search and Recovery.....	1-7
<b>Chapter 2 QUARTERMASTER COLLECTION COMPANY (MORTUARY AFFAIRS) .....</b>	<b>2-1</b>
Mission .....	2-1
Responsibilities.....	2-1
Organization .....	2-2
Assignment and Allocation .....	2-3
Capabilities .....	2-4
Mobility.....	2-4
Required Support .....	2-5
Site Selection/Establishment.....	2-5
Operations .....	2-5
<b>Chapter 3 QUARTERMASTER MORTUARY AFFAIRS COMPANY .....</b>	<b>3-1</b>
Mission .....	3-1
Responsibilities.....	3-1
Organization .....	3-2
Assignment and Allocation .....	3-4
Capabilities .....	3-5
Mobility.....	3-5
Required Support .....	3-5

---

**Distribution Restriction:** Approved for public release; distribution is unlimited.

**\*This publication supersedes FM 10-64, 2 February 1999.**

## Contents

---

	Site Selection/Establishment .....	3-6
	Operations.....	3-6
<b>Chapter 4</b>	<b>MORTUARY AFFAIRS IN FULL SPECTRUM OPERATIONS .....</b>	<b>4-1</b>
	Offensive Operations .....	4-1
	Defensive Operations .....	4-2
	Stability Operations.....	4-2
	Support Operations.....	4-3
	Multinational and Joint Operations .....	4-3
<b>Chapter 5</b>	<b>UNIT MORTUARY AFFAIRS RESPONSIBILITIES .....</b>	<b>5-1</b>
	Search and Recovery .....	5-1
	Integration of Assigned MA Assets.....	5-3
	Personal Effects .....	5-4
<b>Appendix A</b>	<b>SAMPLE UNIT MORTUARY AFFAIRS SOP .....</b>	<b>A-1</b>
<b>Appendix B</b>	<b>SAMPLE OPERATION ORDER MORTUARY AFFAIRS APPENDIX .....</b>	<b>B-1</b>
<b>Appendix C</b>	<b>FORMS AND REPORTS.....</b>	<b>C-1</b>
	<b>GLOSSARY .....</b>	<b>Glossary- 1</b>
	<b>REFERENCES.....</b>	<b>References- 1</b>

## Figures

Figure 1-1. Theater organization .....	1-2
Figure 1-2. MA concept of operation .....	1-4
Figure 2-1. QM Collection Company (MA) organization chart.....	2-2
Figure 3-1. QM MA Company (EAC) organization chart .....	3-3
Figure A-1. Sample unit mortuary affairs SOP .....	A-1
Figure A-1. Sample unit mortuary affairs SOP .....	A-2
Figure A-1. Sample unit mortuary affairs SOP .....	A-3
Figure A-1. Sample unit mortuary affairs SOP .....	A-4
Figure B-1. Sample operation order mortuary affairs appendix.....	B-1
Figure B-1. Sample operation order mortuary affairs appendix.....	B-2
Figure B-1. Sample operation order mortuary affairs appendix.....	B-3
Figure C-1. DD Form 565 .....	C-4
Figure C-2. DD Form 567 .....	C-7
Figure C-3. DD Form 1074 .....	C-10
Figure C-4. DD Form 1075 .....	C-13
Figure C-5. DD Form 1076 .....	C-17
Figure C-6. DD Form 1077 .....	C-20
Figure C-7. DD Form 1079 .....	C-23
Figure C-8. Report of suspected atrocity .....	C-24
Figure C-9. Report of unrecovered remains .....	C-25
Figure C-10. Report of Incident.....	C-26

Figure C-11. Report of area clearance..... C-27  
Figure C-12. Report of Unrecovered/Missing Major Portions ..... C-28

# Preface

This manual serves as a planning and operations guide for all personnel involved in mortuary affairs (MA) within a theater of operations (TO). These personnel must ensure the MA mission is completed with available personnel and equipment. They must also know the types of problems they may face in performing the MA mission. This manual will assist in determining operational capabilities and limitations and help guide the allocation of resources to successfully complete the mission.

This manual outlines existing doctrine and relates policy, procedures, and standards. This publication applies to the Active Army (AA), Army National Guard (ARNG)/Army National Guard of the United States, and United States Army Reserve (USAR) unless otherwise stated. It is designed for use as a guide to operations and procedures by commanders, supervisors, and planners. The use of Automated Information Systems (AIS) that are used to execute business functions is common throughout the sustainment mission area. The specific automation requirements and functional software applications that will support MA operations for the total Army are under development. Automated systems include the Global Combat Support System (GCSS), Force XXI Battle Command Brigade and Below (FBCB2), Movement Tracking System (MTS), Battle Command Sustainment Support System (BCS3), the Defense Casualty Information Processing System (DCIPS), and other related AISs at all force levels. These automated systems will provide the automated means to fulfill the MA requirements given in this manual.

This manual is a doctrinal guide to MA operations within an area of operations (AO) within a Joint TO. As such, it gives the mission and organization of the MA force structure. The manual also explains the role of the various levels of command in the TO. Command relationships between the different brigade combat teams (BCTs), the division, the corps, and the theater are current as of the publication date of this manual. This manual should be used in conjunction with JP 4-06 and AR 638-2.

The Armed Forces are charged with defending the nation and its people. This extends to safeguarding the natural environment. Former Chief of Staff General Dennis Reimer has stated "Environment responsibility involves all of us." The environmental ethic must be part of how Soldiers live and train. By working together, the Armed Forces can forge a premiere environmental stewardship program. Protection of the environment, while providing tough, realistic training, is the key to ensuring the Army is trained and ready to fight present and future enemies. All leaders are expected to serve as the Army's environmental stewards and have a personal and professional responsibility to understand and support the Army's environmental program. Violations of environmental laws and regulations can lead to civil and criminal liability, as well as liability under the Uniform Code of Military Justice (UCMJ). Leaders should ensure that unit personnel are properly trained and equipped to achieve environmental legal compliance. Special consideration should be given to storing, handling, and transporting hazardous materials and wastes that are inherent to the MA mission. Pollution-prevention techniques should be followed wherever possible. Such methods are preferred because they cost less than environmental cleanup and prevent adverse public opinion. Related publications are listed in the references section of this publication.

The proponent for this publication is the United States Army Training and Doctrine Command (TRADOC). Users of this manual are encouraged to recommend changes and submit comments for its improvement. For each change, key the comments to the specific page and paragraph in which the change is recommended. Provide justification for each comment to ensure understanding and complete evaluation. Send comments and recommendations on DA Form 2028 (*Recommended Changes to Publications and Blank Forms*) to Commander, U.S. Army Quartermaster Center and School (USAQMC&S), ATTN: ATSM-MA, 1201 22d Street, Fort Lee, VA 23801-1601.

Direct e-mail questions to the U.S. Army Mortuary Affairs Center (MAC) at [MACweb@lee.army.mil](mailto:MACweb@lee.army.mil).

Users should not view this manual as a sole source of information. Other supporting publications are referenced throughout this manual. A list of publications supporting this manual is provided in the references section.

# Chapter 1

## Mortuary Affairs Overview

---

*Show me the manner in which a nation or a community cares for its dead and I will measure with mathematical exactness the tender sympathies of its people, their respect for the laws of the land and their loyalty to high ideals.*

William Gladstone

---

### MISSION

1-1. As today's Army continues its transformation to the future force, it must remain ready to fight the enemies of both today and tomorrow. As the rise of noncontiguous conflicts demands faster and more deployable fighting units, the Department of Defense (DOD) and the American public will continue to demand the expeditious return of deceased personnel. The Army's role within the Joint Mortuary Affairs Program (JMAP) will continue to be one of the nation's most important and sensitive missions throughout the foreseeable future.

1-2. As the DOD executive agent for the JMAP, the Army is responsible for providing MA support to all Service components during peacetime. Eligible recipients include, but are not limited to, U.S. Service members and their eligible dependents, DOD civilians, contractors, and other authorized civilians assigned outside the continental United States (OCONUS). During wartime, the MA mission is expanded to the joint operations area (JOA), providing MA support to coalition and allied forces, upon request; enemy personnel killed in combat or who die while in U.S. custody; and local nationals as required. See AR 638-2 for a full listing of eligibility criteria and authorized benefits.

1-3. Generally, the Joint Mortuary Affairs Office (JMAO) will appoint a lead agent within a JOA that oversees all MA functions. Based upon theater or operational requirements, policies may be developed for handling remains and personal effects (PE) of personnel not listed in AR 638-2. The JMAO has oversight of all MA operations within the JOA; any questions concerning policies within that theater must be directed to that office for clarification. See JP 4-06 and CJCSM 3500.05A for the duties and responsibilities of the JMAO.

1-4. Current joint MA policy states that the remains of all members of the Armed Forces of the United States must be returned for permanent disposition according to the desires of the person authorized to direct disposition (PADD). Personal effects will be returned to the person eligible to receive effects (PERE). The JMAP is divided into three subprograms which represent the spectrum of joint operations across the globe. The three programs are Current Death, Concurrent Return, and Graves Registration. For specifics on each of these programs, reference chapter 1, section II of AR 638-2.

1-5. The role of the MA specialist (Military Occupational Specialty 92M) is to search for, recover, tentatively identify, and coordinate evacuating remains to the continental United States (CONUS) through a structured evacuation system. The function of the 92M Noncommissioned Officer (NCO) is to ensure subordinate personnel and unit leaders are trained to standard on current MA policies and procedures. The MA specialist is also responsible for the inventory, safeguard, and evacuation of PE of U.S. Service members, coalition and allied forces, enemy combatants, civilians on the battlefield, and others as required.

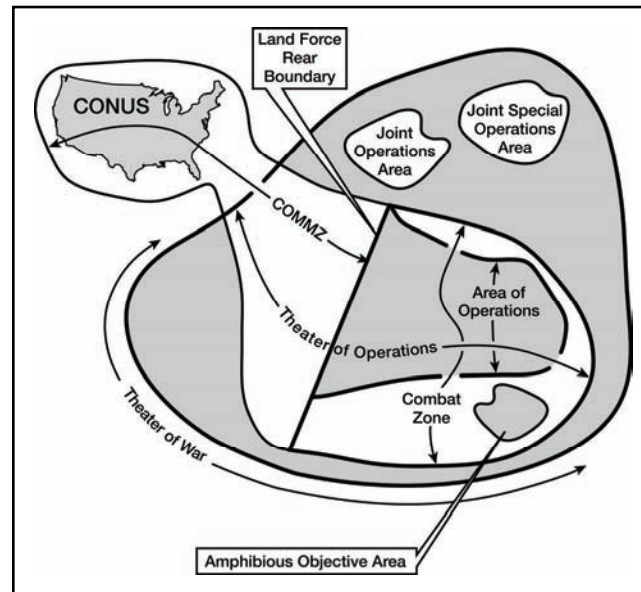
1-6. In every case, MA personnel, in conjunction with unit personnel, will attempt to tentatively identify the deceased prior to evacuating the remains. Preserving all identification media is paramount to a speedy return of remains to the PADD. However, evacuation will not be delayed for tentative identification. If required and authorized, MA personnel will conduct temporary interment, disinterment or reinterment

operations. The MA Specialist provides backup support and guidance for initial search and recovery during combat operations; the primary responsibility within an area of responsibility (AOR) lies with the unit commander.

## THEATER RELATIONSHIPS

### OPERATIONAL LEVEL

1-7. The operational framework for Army forces rests within the combatant commander's theater organization (figure 1-1). Geographic combatant commanders (GCC), commanders with geographic responsibilities, designate theaters of war, TOs, combat zones, and communication zones (COMMZ) as they see fit. A TO is a subarea within a theater of war as defined by a combatant commander within which forces conduct or support specific combat operations. Different TOs within the same theater of war will normally be geographically separate and focused upon different enemy forces. TOs are usually of significant size allowing for operations over a significant period of time. FM 3-0 provides a detailed discussion of theater territorial organization.



**Figure 1-1. Theater organization**

1-8. Joint force commanders (JFCs) at all levels may establish subordinate operational areas (figure 1-1). JP 3-0 discusses the assignment and responsibilities associated with establishing JOA within a TO. Due to the unique structure of the MA evacuation channel, MA generally operates within a JOA. The JMAO has responsibility for the JMAP within a JOA. For more information on JMAO responsibilities, reference JP 4-06.

1-9. The key areas concerning the deployment and execution of the MA mission include the COMMZ and the combat zone. The COMMZ is the area within the TO that contains the lines of communication (LOC), establishments for supply and evacuation, and other agencies required for immediate support of the field forces. In a contiguous area of operations (AO), the COMMZ is generally located behind but contiguous to the combat zone. Within a noncontiguous AO, the COMMZ may be commingled with the combat zone. The combat zone is the area required by combat forces for the conduct of combat operations, generally the area forward of the corps rear boundary.

1-10. The Theater Sustainment Command (TSC) is normally the Army Service component commander's major organization responsible to provide common-user logistics (CUL) within the TO. The TSC is responsible for providing the Army Service Component Command (ASCC) with a common logistical



picture, maximizing throughput to provide follow-on sustainment. Each TSC is responsible for developing an operational level MA appendix tailored to its unique TO. For more information on the TSC, see FM 4-93.4.

1-11. The theater level headquarters is assigned command and control (C2) over the JOA. The regional combatant commander will tailor the theater command structure to meet the needs of the joint forces in the TO. The theater command is organized and equipped primarily as the ASCC for the Regional Component Command (RCC). The theater commander normally acts as the ASCC and is responsible for all administrative control (ADCON) of all Army forces in the RCC. There will be additional modular sustainment brigades specifically tailored to support the assigned division and BCTs.

1-12. Operational level MA planners must establish and continually update operation plans (OPLANs) and estimates, as these are the documents that are used to build the time-phased force and deployment list (TPFDL). For more information on building operational level estimates and OPLANs, reference Chairman of the Joint Chiefs of Staff Manual (CJCSM) 3500.05A, CJCSM 3500.05C, and CJCSM 3122.03A.

## TACTICAL LEVEL

1-13. Tactical level MA planners are responsible for developing MA plans and support to Army units capable of defeating a level III threat. Though the tactical MA planner is often located at the Division G-4 level, the BCT has become the Army's primary organization for tactical engagement of the enemy.

1-14. The three standard BCT designs are the Infantry BCT (IBCT), Heavy BCT (HBCT), and the Stryker BCT (SBCT). The higher command element of the BCT is the division. In major combat operations, the division will typically operate with a variable number of BCTs. If a division or corps headquarters is assigned responsibility of a JOA, it is known as a division or corps AOR.

1-15. Tactical level MA planners must establish and update OPLANs and estimates. For information and guidance on developing these documents, see FM 5-0.

## THEATER MA OPERATIONS

1-16. MA operations occur at all levels of a TO. The MA program starts at the unit level with search and recovery operations and continues until remains are returned to the PADD and all PE are returned to the PERE. The MA Program covers the initial search and recovery, tentative identification, coordinated evacuation, and decontamination (if necessary) of remains and PE.

1-17. The MA mission starts at the unit level. Each unit is responsible for designating a search and recovery team to conduct search and recovery operations during the combat phase of operations. Unit commanders are responsible for the initial search and recovery operations within their AOR. Upon recovering remains the unit search and recovery team will evacuate those remains to the closest MA collection point (MACP). For more information on establishing search and recovery teams, see chapter 5.

1-18. MA personnel set up MACPs, theater mortuary evacuation points (TMEPs) and PE depots throughout the JOA (figure 1-2). Remains recovered by unit initial search and recovery operations are evacuated to the nearest MACP. From the receiving MACP, MA personnel evacuate the remains to the TMEP. The preferred method of evacuation is directly from the initial MACP to the TMEP; however, the tactical situation may dictate that remains be evacuated through several MACPs before reaching the TMEP.

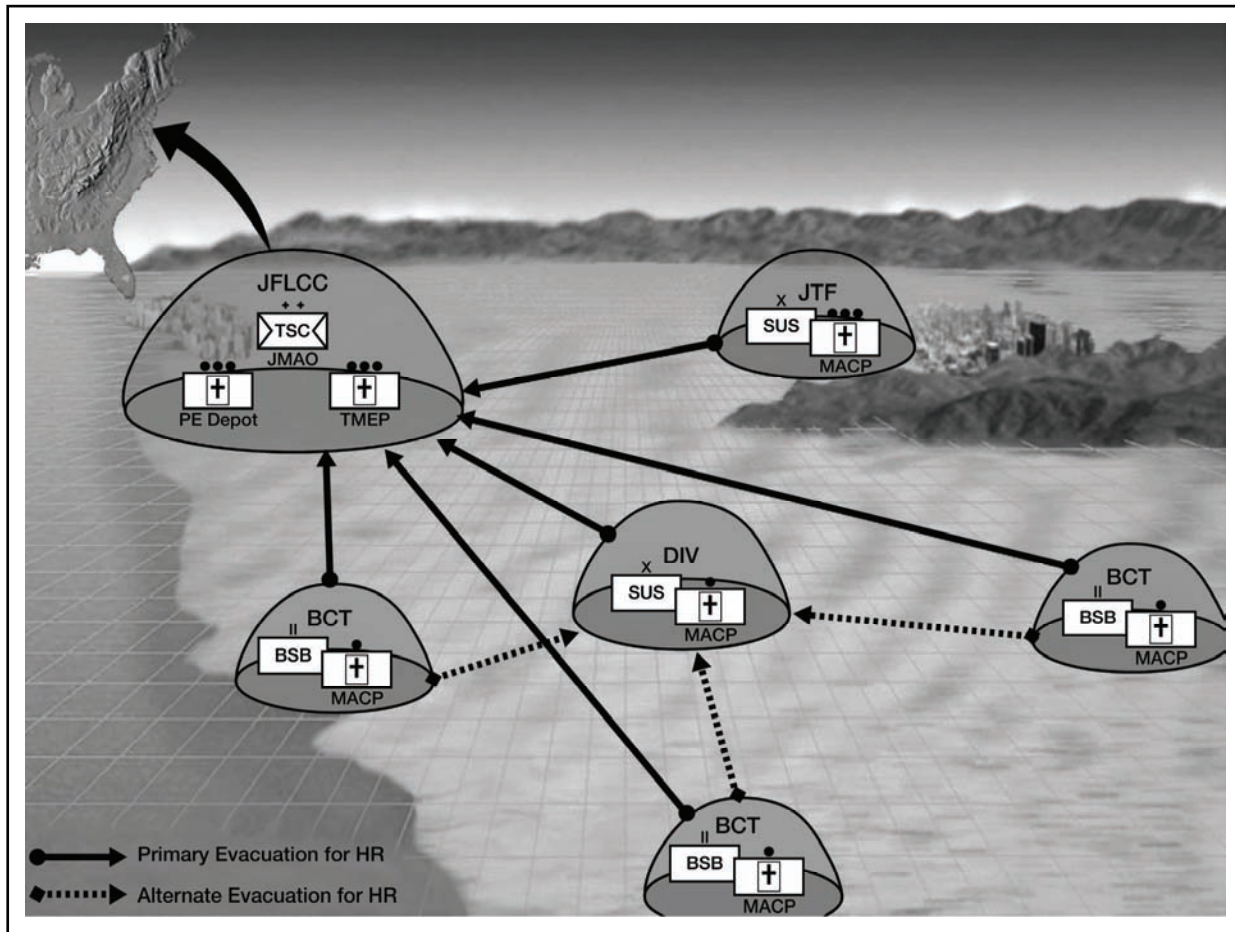


Figure 1-2. MA concept of operation

1-19. The TSC commander or a designated representative determines the responsibility and placement of theater MA assets within the JOA. Normally, this is accomplished through coordination with the JMAO. The TSC commander together with the JMAO must produce a plan that places MA assets where they can best support both current and future operations within the JOA. This places an inherent responsibility upon the JMAO and TSC to ensure that MA assets are properly assigned to the TPFDL during the planning process.

1-20. MA operations must be planned in detail from the unit through the joint level. They must be included in OPLANs, contingency plans (CONPLANs), and standing operating procedures (SOPs) at both the operational and tactical level of operations. These plans and procedures should cover unit responsibilities as well as the employment, relocation criteria, and allocation of MA personnel and equipment throughout the JOA.

- MA Staff Planning Considerations**
- Type of operation
  - MA units on TPFDD
  - Unit structures/capabilities
  - Unit locations/relocations
  - Number of troops supported
  - Noncombatants affected
  - Coalition/allied support
  - Coalition/allied requirements
  - Host nation support
  - Local MA policies
  - Local burial customs
  - Embedded media relations

## STAFF MA RESPONSIBILITIES

1-21. MA staff planners must be sure to include MA estimates within the unit's overall logistics estimate. These estimates are then used to prepare the command to handle anticipated fatalities. MA staff planners must be able to quickly address any staff or command concern. Each TO has its own unique criteria that must be coupled with the contemporary operational environment (COE) and included within the planning process. MA planners must create a plan that is not only tailored to both their TO and the COE, but one that is adaptable to meet all anticipated future contingencies or operations.

1-22. Each brigade support battalion and sustainment brigade is assigned MA personnel within their respective modified table(s) of organization and equipment (MTOE) to assist them in their MA planning and training. MA planners must be adept at anticipating and understanding the support requirements of the tactical plan or independent course(s) of action (COA). Additionally, the MA planner must be able to assess sustainment feasibility, while identifying support requirements for synchronization with the commander's intent. The MA staff officer/NCO assigned must ensure that all subordinate units—

- Develop MA plans and procedures at all levels of command.
- Coordinate MA support at all levels within the TO. Units in theater or arriving in theater must be kept informed of reporting procedures, local MA policies, current operation order (OPORD) annexes, SOPs, and command guidance.
- Assist in logistical estimate planning required to support not only the full spectrum of military operations but also possible military and civilian mass fatality incidents.
- Develop, coordinate, and complete required mission analysis, formulate staff recommendations, and prepare the MA support annex for the OPLAN.
- Obtain the MA support concept of the GCC and the JMAO of the planned TO. Continue to request the MA support concept down to the level of staff the planner is assigned.
- Ensure that units are knowledgeable on MA plans and annexes prior to deployment.
- Identify and train company level recovery teams.

1-23. The staff planner is the key individual in the operational concept. These individuals initiate the entire planning process. Key MA staff officer/NCO planning responsibilities include—

- Prepare a MA running estimate for each proposed COA.
- Resolve any MA logistical problems as soon as the situation permits.
- Advise commanders on MA operations.
- The planning considerations for creating MA annexes to OPLANS are similar to creating any other annex for an OPLAN. Planners must ensure all known factors are taken into account during the development process.
- Validate all MA planning assumptions throughout the military decisionmaking process (MDMP) as defined in FM 5-0.
- Ensure all supported units have established a team for initial search and recovery, tentative identification and evacuation to a MACP. See chapter 5 for non-MA unit responsibilities.
- Ensure all supported units have a validated MA SOP prior to deployment. See appendix A for a sample SOP.
- Identify procedures for handling deceased local nationals, enemy combatants and coalition, and allied Soldiers. Lacking policy or guidance from the JMAO, all remains are handled in the same manner. Ideally, once positive identification has been made, MA personnel are informed on proper disposition of non-U.S. remains.

### MA Staff Input

- MA map overlay
- OPLAN/OPORD annex development
- Mission requirements vs. on-hand assets
- Allocation of MA assets
- Prioritization of MA assets
- Identify temporary interment sites
- Evacuation flowchart

1-24. Staff planners who are developing MA operations must be aware of several factors that affect MA activities and operations. These include the following:

- The type of conflict—regional or global.
- The size of the COMMZ and combat zone for a contiguous AO. The lack of a COMMZ for a noncontiguous AO.
- Logistical resources available, including assets within the AOR, existing contingency contracts, pre-positioned assets, and assets within the time-phased force deployment data (TPFDD).
- The level of infrastructure development, including fixed facilities for mortuaries and airfields for evacuation.
- Facts and figures on casualty estimates for different levels of conflict intensity within the different phases of the OPLAN.
- How to best use modular MA assets to fully support the commander's intent and concept of execution. MA assets from the MA Quartermaster (QM) Collection Company are able to be deployed at the MA team level.
- Procedures for reporting war crimes and violations of the Uniform Code of Military Justice and the Geneva and Hague Conventions.

1-25. Non-MA company level units in theater must be involved in the MA mission and operations. Units must identify search and recovery teams to recover remains within their AOR. The teams must be briefed on local customs and courtesies on dealing with remains. The teams must be instilled with the MA motto that all remains are to be treated with the utmost "dignity, reverence, and respect". For more information on non-MA unit responsibilities, see chapter 5.

## EMPLOYMENT OF MA ASSETS

1-26. MA-qualified officers or 92M NCO's Additional Skill Identifier 4V (ASI 4V) are responsible for planning the employment of MA assets assigned to the command in support of operations. MA staff planners—

- Provide guidance on prestocking essential MA equipment, supplies, forms, and publications.
- Ensure that subordinate units are training according to OPLAN annexes.
- Ensure that deploying MA assets and unit MA plans are certified prior to deployment.
- Develop and assess MA TPFDD.
- Determine the readiness posture, capabilities, and limitations of each unit.
- Publish local MA policy directives, mutual cooperation agreements, or international agreements as units flow into the TO.
- Establish a means to maintain records of transferring remains and PE to host nation and coalition/allied forces.
- Evaluate each unit that is to be assigned an MA asset.
- Ensure MA equipment and personnel shortages are filled.
- Provide guidance on estimated times for unit deployments.
- Establish liaisons with other MA staff from the JMAO through the MACP.
- Integrate the current chemical, biological, radiological and nuclear (CBRN) threat into the MA plan.
- Initiate a reporting system within the TO or the assigned level of command.
- Establish communications with all supported and supporting MA units, JMAO, transportation assets, and units providing logistical support.
- Coordinate a PE evacuation system.
- Coordinate with movement control personnel for transporting remains and PE by surface and by air.
- Provide input to the appropriate staff concerning MA operations.

- Ensure that media requests are routed through the local public affairs office (PAO).
- Ensure that matters concerning family members are routed through higher HQ or the JMAO.

1-27. During multinational operations, MA staff planners must ensure that joint doctrine takes precedence. Specifically, it is imperative that MA planners and MA personnel process all remains in the same manner in accordance with JP 4-06 and all applicable international and cooperative agreements in the specific TO.

## **SEARCH AND RECOVERY**

1-28. Search and recovery is the first step in the MA process. Search and recovery operations have two distinct phases: conflict recovery and area clearance.

### **CONFLICT RECOVERY PHASE**

1-29. The conflict recovery phase of search and recovery begins immediately. Unit commanders are responsible for the search and recovery of all remains in their AO. If additional augmentation is required, it may be requested through the units' higher headquarters. See chapter 5 for more information and planning criteria for unit search and recovery operations during the conflict recovery phase.

1-30. As the conflict develops, the situation changes, or the unit relocates, the unit's higher headquarters may assign additional assets to assist with security or actual search and recovery. Unit commanders may request to use MA specialists from the closest MACP to assist with the search and recovery operations. See chapter 2 of this FM for MACP allocation, responsibilities, and capabilities. However, to take MA personnel from the MACP will degrade that MACP's capability to process and evacuate other remains. Units must make every effort to recover remains during this phase. Failing to do so will significantly delay or prevent the return of remains to their loved ones.

### **AREA CLEARANCE PHASE**

1-31. Area clearance is a final and thorough search and recovery for all remains and PE not previously recovered during the conflict recovery phase. It begins as soon as the tactical and logistical situations permit. Area clearance planning and execution is covered in JP 4-06.

**This page intentionally left blank.**

## Chapter 2

# Quartermaster Collection Company (Mortuary Affairs)

---

*They go where others fear to go; they do the things that others will not do; they surround themselves with sorrow, tragedy and grief and call it their job; they do it willingly, not for themselves, but for their country.*

Commonwealth of Virginia Commendation to the 54<sup>th</sup> QM Company (MA), 2002

---

## MISSION

2-1. The Quartermaster Collection Company (MA), Standard Requirement Code (SRC) 10490F, mission is to establish, operate, and maintain MACPs. Company personnel conduct search, recovery, and evacuation operations for deceased U.S. Military and certain U.S. civilian and allied personnel; dispose of PE; and maintain essential records and reports. The company is designed to be modular; maintaining the ability to deploy at the section level. This modularity is essential to support the full spectrum of Army operations in the COE.

2-2. To enhance modularity and deployability, the Quartermaster Collection Company, has four sub-SRCs each with its own unique mission and SRC:

- **The Headquarters Platoon** (SRC: 10548FA) mission is to provide command and control, administrative, logistical, and field feeding support and unit level maintenance management to the QM Collection Company (MA).
- **The Support Operations Section** (SRC: 10548FB) mission is to coordinate and control MA operations.
- **The Forward Collection Platoon** (SRC: 10548FC) mission is to establish, operate, and maintain up to four MACPs. Conduct limited search and evacuation operations of deceased U.S. Military, certain U.S. civilian and Coalition personnel, receive, inventory, and coordinate evacuation of PE with remains; maintain essential records and reports.
- **The Main Collection Platoon** (SRC: 10548FD) mission is to establish, operate, and maintain a Corps Main Collection Point that receives remains and PE from the Forward Collection Points.

## RESPONSIBILITIES

2-3. The QM Collection Company (MA) is designed to deploy, set up, and operate MACPs. The MACPs receive, process, and coordinate the evacuation of deceased U.S. Military, certain U.S. civilian personnel, coalition forces and their accompanying PE. The company's specified duties are to—

- Conduct limited search and recovery missions, as required.
- Set up and operate MACPs, with refrigeration capability, within the Brigade Support Battalion support area.
- Set up and operate a main MACP, with refrigeration capability, within the Sustainment Brigade area.
- Maintain essential records and reports.

2-4. While the specified tasks of the QM Collection Company are extensive, additional on-order responsibilities include the following:

- Set up and operate a TMEP until the arrival of the QM Company (EAC).
- Set up and operate a PE depot until the arrival of the QM Company (EAC).
- When supplied the necessary equipment and augmenting personnel (*Per JP 4-06*), establish, operate, and maintain a mortuary affairs decontamination collection point (MADCP).
- Conduct temporary interment and disinterment operations as directed by the GCC.
- Respond to CONUS or U.S. Territory peacetime mass fatality incidents as requested and authorized by the Department of Homeland Security, in accordance with DOD Directive 3025.1 and the National Response Plan (NRP)
- Respond to OCONUS peacetime mass fatality incidents as requested and authorized by the State Department and in accordance with DOD Directive 5100.46.

2-5. Commanders and staff planners must understand that the QM Collection Company (MA) ability to accomplish their tables of organization and equipment (TOE) mission is degraded as it is tasked to perform additional duties and responsibilities outside the scope of that mission. The QM Collection Company (MA) commander, or a designated representative, must continually inform the chain of command about current responsibilities and the capabilities of the unit. The chain of command must also be informed on how the additional assigned responsibility will impact the ability of the QM Collection Company (MA) to adapt and flex to future operations within the COE.

## ORGANIZATION

2-6. The QM Collection Company (MA) (figure 2-1) comprises a headquarters element, support operations cell, and six platoons.

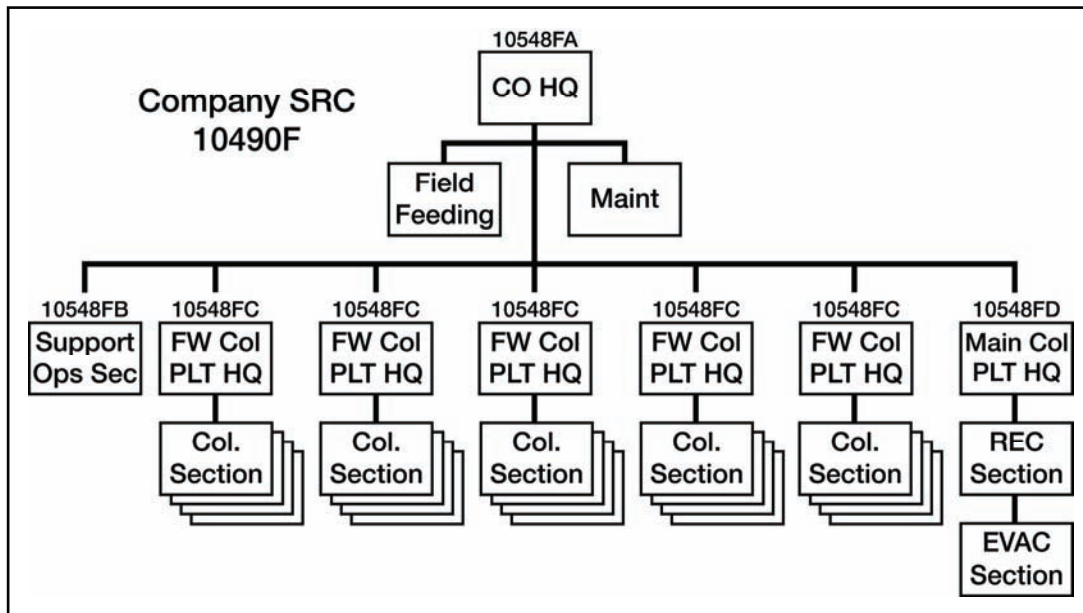


Figure 2-1. QM Collection Company (MA) organization chart

2-7. The headquarters element contains the headquarters, food service, and maintenance sections. Each section within the headquarters element has a specific function.

- The headquarters section is responsible for providing command and control (C2), administrative support, and logistical support to the company and any attached elements operating within the company. This section also operates as the net control station (NCS) for the company.
- The maintenance section provides unit level maintenance management, supervision of the company’s subordinate units, unit level equipment repair, and vehicle recovery for the company.



The MA commander or the early entry module (EEM) officer in charge (OIC) will place and assign maintenance personnel to best support the unit.

- The field feeding section provides field feeding for the company when the company is co-located with the platoons. When the platoons are dispersed, the MA company commander or the EEM OIC will allocate or assign field feeding assets to best support the mission.

2-8. The support operations section is responsible for the properly allocating and placing MA assets on the battlefield. In the deployment phase this section acts as the MA EEM that deploys with other advance forces to the JOA. Upon arrival on the battlefield, the section reports to the Theater Sustainment Command (TSC) MA officer for integration into the G4, Sustainment Operations Division. Commanders must understand that this section must be integrated as soon as possible and be positioned where it can best support the further integration of MA assets in order for the MA mission to be successful. Once integrated this cell acts as a coordination and logistics hub for the assignment and placement of all MA assets going through the reception, staging, onward movement, and integration (RSOI) into the JOA. Once all Company MA Assets have been deployed this section is responsible for the oversight and overall execution of the MA mission at the corps level.

2-9. The five forward collection platoons are organized into a headquarters element and four collection sections, each of which establishes a MACP. Each MACP will generally be assigned to support a BCT sized element. Upon establishment, the MACPs receive, process, and coordinate evacuation of remains and associated PE. Each MACP is able to receive, process, and coordinate evacuation for 20 remains and associated PE per day.

2-10. The main collection platoon is organized into three sections: headquarters, receiving, and evacuation. Together these sections provide MA direct support (DS) to the corps. Upon establishment, the main collection platoon receives remains and PE from the forward MACPs. Additionally, the main collection point maintains the ability to receive remains and PE directly from surrounding units on an area support basis. The main collection platoon then coordinates evacuation of received remains and PE to the TMEP. The main collection platoon may be tasked to act as the MADCP or the TMEP until the QM MA Company (EAC) arrives in Theater.

2-11. The QM collection company (MA) may be tasked to operate a TMEP, PE depot and to inter/disinter remains until the QM MA Company (EAC) arrives in theater. These are nonresourced missions and will reduce the capabilities of the forward collection point operations.

## **ASSIGNMENT AND ALLOCATION**

2-12. The QM Collection Company is assigned to a TSC, TOE 63702A. If the TSC is not fully deployed to theater, the QM Collection Company assets will be assigned to the highest sustainment unit located within that theater until the TSC is established. During full deployment the company can support a force of 179,000 Soldiers, or up to 20 individual BCT equivalent units. Individual sections may be deployed from the company as the mission and logistics requirements dictate. This allows supported units the flexibility required to operate effectively within the COE. However, the increased modularity places additional responsibility upon MA staff officers to produce and maintain accurate MA estimates. The estimates prepared are used for planning both the timeline and the number of assets deploying.

2-13. Forward collection platoons are assigned to the Brigade Support Battalion for allocation to the different BCTs within a division. The Headquarters element from this platoon will be assigned to the Sustainment Brigade of that division. Each BCT size element will be assigned a section from the Forward Collection Platoon. This section is responsible for providing DS to the BCT by establishing a MACP. Because the AO is a nonfixed structure, the number of forward collection platoons and sections assigned within an AO will vary by operation.

2-14. The Main Collection Platoon placement within the AO is based upon the JMAO and Theater Command guidance. Normally the platoon will be assigned to a sustainment brigade within the TSC. The platoon will be the primary asset called upon to establish a MADCP and may be used to augment different MACPs based upon forecasted mission requirements and the COE.

2-15. The support operations section will be integrated in the TSC, G4 sustainment operations cell. The company support operations section is responsible for the oversight of all MA assets in the TO and for tracking the proper evacuation and shipment of all remains and PE.

2-16. Upon full company deployment, or by the needs of the theater, the commander of the QM Collection Company (MA) will become the subject matter expert advisor to the TSC, G4 Sustainment Operations Division. The Commander will also act as a liaison between the JMAO, TSC, and supported units with the responsibility to ensure proper MACP placement and MA troop care. The QM Collection Company commander's primary responsibility is to ensure the MA mission is accomplished in accordance with JMAO and GCC intent. The QM Collection Company commander must be given the flexibility required to ensure mission success.

2-17. The first sergeant of the QM Collection Company (MA) is attached to the TSC, G4 Sustainment Operations Division upon deployment. Once assigned the first sergeant will become the subject matter expert for the organization. He or she is then responsible for preparation and review of the MA appendix/annex within all OPLAN/OPORDs while still administering the inherent first sergeant responsibility of caring for the troops. This is done by ensuring that that all MA troops are properly assigned to their supported units and that they are given the proper support needed to accomplish the MA mission.

## **CAPABILITIES**

2-18. At TOE level 1 the company is capable of establishing 20 MACPS and a support operations cell. In addition, the company is able to establish a main collection point.

- Each MACP is capable of processing up to 20 remains per day. This capability includes the receipt, processing, and evacuation of remains along with the receipt, inventory, and evacuation of all PE associated with the remains.
- The support operations cell is able to act as the EEM to assist the TSC, G4 Sustainment Operations Division with the integration of all RSOI MA Units.
- The main collection point is capable of processing 400 remains per day received from the forward MACPs.

2-19. At TOE Level 2 the operational capabilities of the Company are reduced to approximately 90 percent of the TOE Level 1 capabilities.

2-20. At TOE Level 3 the operational capabilities of the Company are reduced to approximately 80 percent of the TOE Level 1 capabilities.

2-21. The operational capabilities drop significantly if the Company is also tasked to conduct search and recovery operations, operate a TMEP, conduct MADCP operations, or conduct temporary interment/disinterment operations.

2-22. Soldiers assigned to support a unit can assist in the coordinated defense of that unit's area. Supported unit commanders must realize that when the MA Soldiers are given additional defense responsibilities, the MACP processing capability is reduced. When consolidated the entire company can provide unit level food service support and maintenance on all organic equipment, except communication security equipment.

2-23. Personnel strength levels determine other capabilities, which are described within TOE 10490F.

## **MOBILITY**

2-24. The QM Collection Company can move 100 percent of its TOE equipment and supplies in a single lift by using 100 percent of its authorized organic transportation assets. The MACP should not move until all remains have been processed and evacuated.

2-25. If individually deployed, the forward collection sections are 100 percent mobile using organic section equipment upon evacuation of all remains. Individually deployed the main collection point is also 100 percent mobile when using 100 percent of organic equipment and upon evacuation of all remains.

## REQUIRED SUPPORT

2-26. The company is capable of providing its own unit maintenance (except communications security [COMSEC] maintenance) and food service when colocated.

2-27. When deployed in support of operations the individual sections and platoons require external support. The supported unit is often tasked to provide this support. This is especially challenging for the staff planner because of the low density of the equipment and repair parts of much of the essential MA equipment.

2-28. When determining the placement of the MACPs the commander and first sergeant of the QM Collection Company must ensure that the appropriate C2 structure is in place. FM 5-0 lists support and reporting responsibilities for the different C2 applications.

2-29. MA Command controlled supplies and equipment will be managed by the JMAO and “pushed” to the MA elements. Based upon the operational situation, reusable command controlled items, such as human remains transfer cases (TCs) may be “pushed” down to the MACP level based upon the COE.

2-30. If exposed to a CBRN environment the QM Collection Company has minimal capability for decontamination operations. The unit relies upon the supported element to provide hasty decontamination operations and upon the Corps Decontamination Company for deliberate decontamination operations.

- | Required Support                |
|---------------------------------|
| • Life support                  |
| • Religious/spiritual health    |
| • Combat health                 |
| • Legal                         |
| • Financial                     |
| • Engineering                   |
| • Additional transportation     |
| • Personnel services            |
| • Unit level COMSEC maintenance |

## SITE SELECTION/ESTABLISHMENT

2-31. Site selection is dependent upon which unit the MA assets are attached and the defensive structure of those units. Generally the MACP will be colocated with the Brigade Support Area and need to be integrated into the overall defense plan. MACP specific site selection criteria can be found in JP 4-06.

2-32. Upon arrival at a new location, the MACP noncommissioned officer in charge (NCOIC) will notify both the supported unit and the MA higher headquarters. The NCOIC will then implement the priorities of work. Once the MACP is established the NCOIC will notify both the supported unit and the MA higher headquarters that the MACP is ready to receive remains.

## OPERATIONS

2-33. MA leaders must continually produce estimates, through which operational shortfalls are identified. Once shortfalls are identified impacts and mitigations must be implemented to ensure mission success.

2-34. Before deploying to a specific JOA, the commander, or a designated representative, must coordinate with the TSC representatives. The key areas of coordination are synchronizing TPFDD—specifically matching unit personnel to unit equipment—and identifying equipment shortfalls.

2-35. Upon deployment the commander and first sergeant must work closely with the TSC, G4, Sustainment Operations Division. This coordination provides the MA leaders visibility over transportation, personnel, and logistics assets throughout the TO for MA issues. This also allows the MA Leadership to mitigate any MA issues, specifically those concerning transportation, communications, and C2.

2-36. Ideally the Collection Company's EEM coordinates with the individual incoming MACPs and links them up with their supported units during the RSOI process. This requires initiative on the part of the EEM and Forward Collection Platoon leaders or platoon sergeants. After each of the four sections from the Forward Collection Platoon is assigned, the platoon leader and platoon sergeant become senior MA advisors to the division or task force logistics planners.

2-37. The MACP NCOIC will report to the BCT Commander for C2; however MA issues will still be reported through MA channels. Additional reporting requirements are based upon the supported units logistics situation report (LOGSITREP) SOP.

2-38. The MACP NCOIC is also responsible for initiating MACP priorities of work. This specifically includes establishing and maintaining site security over the collection point. As more reporters and media are embedded into our fighting forces, MA Leaders need to ensure they are controlling access to the processing area. An MA Leader has an inherent responsibility to ensure that family members do not see their loved one on a newscast before being notified by the Casualty Assistance Command (CAC).

2-39. MA Leaders at all levels should coordinate daily with the appropriate individuals who have oversight for MA issues. They must also attend recurring briefings to obtain current and vital information needed to make informed MA decisions. This will ensure the accurate flow of information on MA issues passed through the chain of command.

2-40. When refrigeration of remains is required, MA Leaders must use the "first-in, first-out" (FIFO) concept. The first remains placed in the refrigeration unit will be the first remains to be removed for processing and evacuation.

- The refrigeration is not to be used as a "storage" unit and should not be factored into the planning estimates as such. The refrigeration unit is to be used strictly to hold remains until they can be processed.
- No other items, such as Class I (food and perishables) or medicines should be placed in MA refrigeration assets.
- If additional MACP refrigeration assets are required, the NCOIC should contact the Brigade Support Battalion (BSB) Support Operations Office (SPO) or Division G-4 to initiate augmentation by external units or local contract.

2-41. Based on the unique stresses placed upon the MA Soldier, the QM Collection Company (MA) is designed to allow 6-month rotations during long operations. MA Leaders must ensure that after these deployments Soldiers are allowed to decompress after dealing with death daily. MA leaders should coordinate with the local chaplain and mental health personnel to plan and implement a decompression program upon a Soldiers' return from deployment.

#### **Sample Priorities of Work**

- Tie in with adjacent units
- Establish site security
- Establish communication
- Establish life, personnel, medical and engineer support
- Establish habitual transportation link
- Prepare road network
- Prepare refrigeration
- Construct munitions holding area
- Prepare to receive remains

## Chapter 3

# Quartermaster MORTUARY AFFAIRS Company (Echelons Above Corps)

---

*During wars or in peacetime, no part of the mission of the Army is more sensitive than the responsibility for the care and burial of the dead of the armed forces.*

---

Florence Cannon, QM Professional Bulletin, 1952

---

## MISSION

3-1. The Quartermaster Mortuary Affairs Company (echelons above corps [EAC]), SRC: 10690F, mission is to establish, operate, and maintain up to two TMEPs to move deceased U.S. Military, coalition, and civilian personnel to CONUS/OCONUS military mortuaries or conduct theater interment operations; establish and operate up to five MACPs; and establish and operate a personal effects depot. There is currently one QM MA Company (EAC) in a Reserve status.

3-2. To enhance deployability, there are five sub-SRCs within the Quartermaster Mortuary Affairs Company (EAC). The Headquarters Platoon, Support Operations Section, Personal Effects Platoon, Evacuation/Mortuary Platoon, and the Collection Platoon each have their own unique mission and SRC.

- The Headquarters Platoon (SRC: 10568FA) mission is to provide C2, administrative, logistical, field feeding support, and unit level maintenance management to the Quartermaster (QM) Mortuary Affairs Company (EAC).
- The Support Operations Section (SRC: 10568FB) mission is to coordinate and control MA operations.
- The Personal Effects Platoon (SRC: 10568FC) mission is to receive, store, safeguard, and ship PE of remains processed in theater.
- The Evacuation/Mortuary Platoon (SRC: 10568FD) mission is to operate a TMEP and/or a temporary interment site.
- The Collection Platoon (SRC: 10568FE) mission is to recover, receive, process, secure, account, and evacuate deceased U.S. Military and certain U.S. civilian personnel.

## RESPONSIBILITIES

3-3. The QM MA Company (EAC) is designed to deploy, set up, and operate within a TO. The company's specified duties are to—

- Set up and operate up to two TMEPs to receive, process, and coordinate evacuation of deceased U.S. Military and certain U.S. civilian personnel to CONUS/OCONUS military mortuaries.
- Set up and operate up to five MACPs within the theater area to receive, process, and coordinate evacuation of deceased U.S. Military and certain U.S. civilian personnel and their accompanying PE.
- Set up and operate up to two temporary interment sites (upon approval of the GCC). The interment sites will receive, process, and inter deceased U.S. Military, certain U.S. civilian, coalition, local national (if disposition cannot be determined), enemy personnel, and all associated PE.

- Set up and operate a theater PE depot to store, safeguard, and coordinate shipment of the PE of remains and missing Soldiers in theater.

3-4. While the specified tasks of the QM MA Company (EAC) are extensive; additional on-order responsibilities include the following:

- When augmented with table of distribution and allowances (TDA) personnel and host nation support, the company can operate one in-theater mortuary that will receive, process, embalm, and coordinate evacuation of deceased U.S. Military and certain U.S. Civilian personnel to CONUS/OCONUS military mortuaries.
- When supplied the necessary equipment and augmenting personnel (*Per JP 4-06*), establish, operate, and maintain a MADCP.
- Respond to CONUS or U.S. Territory peacetime mass fatality incidents as requested and authorized by the Department of Homeland Security, in accordance with DOD Directive 3025.1 and the NRP
- Respond to OCONUS peacetime mass fatality incidents as requested and authorized by the State Department and in accordance with DOD Directive 5100.46.

3-5. Commanders and staff planners must understand that as the QM MA Company (EAC) is tasked to perform additional duties outside the scope of their TOE mission, that mission becomes degraded. Examples of external missions include area defense, supported units details, and taskings. The QM MA Company (EAC) commander, or a designated representative, must continually inform the chain of command about current responsibilities and the capabilities of the unit. The chain of command must also be informed about how the additional responsibility will impact the ability of the company to conduct future operations within the COE.

## ORGANIZATION

3-6. The QM MA Company (EAC) (figure 3-1) comprises a headquarters element, support operations section, and four platoons.

3-7. The headquarters element contains the headquarters, food service, and maintenance sections. Each section within the headquarters element has a specific function.

3-8. The headquarters section is responsible for providing C2, administrative, and logistical support to the company and any attached elements operating within the company. The section also operates as the alternate net control station (ANCS) for the company.

3-9. The maintenance section provides unit level maintenance management, supervision of the company's subordinate units, unit level equipment repair, and vehicle recovery for the company. When the platoons are dispersed the EAC Commander or EEM OIC will direct placement of the maintenance section to best support the unit.

3-10. The field feeding section provides field feeding for the company when the company is colocated with all the platoons. When the platoons are not colocated the EAC Commander or EEM OIC will direct placement of the field feeding section to best support the unit.

3-11. The Support Operations Section is responsible for the proper allocation and placement of the company's MA assets on the battlefield. Upon arrival, the section reports to the TSC MA officer for integration into the TSC G4, Sustainment Operations Division. Once integrated, this cell coordinates and controls assigned MACPs; search and recovery operations; and evacuation operations for deceased U.S. Military, certain U.S. civilian, and coalition personnel. The QM MA Company (EAC) Support Operations Section must establish communication with the QM Collection Company (MA) Support Operations Section as soon as logistically possible. This is necessary to establish a common operating picture (COP) of all MA operations. Additionally the Support Operations Section is the primary NCS for the QM MA Company (EAC).

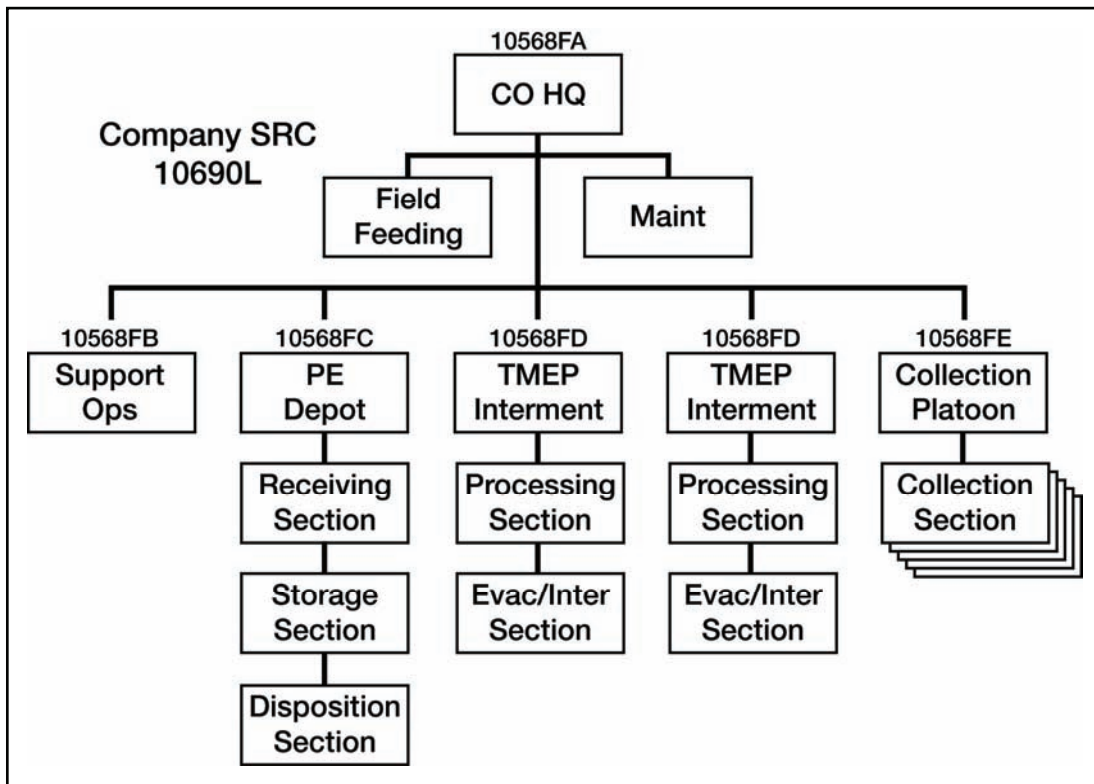


Figure 3-1. QM MA Company (EAC) organization chart

3-12. The PE Platoon receives, stores, safeguards, and ships personal effects of remains processed in theater. The platoon is organized into a headquarters element and three additional sections: receiving, storage, and disposition.

- The headquarters section provides supervision, coordination, and scheduling for operational elements of the platoon.
- The receiving section receives associated PE from the MACPs and also PE left in the unit areas for all individuals under custody, control or jurisdiction of the Army.
- The storage section stores and safeguards all PE received by the receiving section.
- The disposition section ships PE processed in the theater. The items will be shipped in accordance with AR 638-2. Human Resources Command (HRC) and Casualty Memorial Affairs Operations Center (CMAOC) provide assistance

3-13. The Evacuation/Mortuary Platoon is responsible for the operation of a TMEP and/or a temporary interment site. The platoon is organized into a headquarters element and two additional sections: processing and evacuation/temporary interment.

- The headquarters section provides supervision and coordination for operating elements of the platoon. The section is also responsible for managing operations and ensuring quality control of the TMEP.
- The processing section processes remains received from the forward collection platoons. The section may also receive remains directly from local units that have sustained casualties.
- The evacuation/interment section operates a TMEP. The TMEP is responsible for processing and evacuating remains out of theater. The TMEP must also be prepared to receive augmentation to support interment or mortuary operations within the TO.

3-14. The Collection Platoon is organized into five sections, each of which establishes a MACP. The MACPs receive, process, and coordinate evacuation of remains and associated PE. Each MACP is able to receive, process, and coordinate evacuation for 20 remains.

## **ASSIGNMENT AND ALLOCATION**

3-15. The QM MA Company (EAC) is assigned to a TSC to provide MA support on an area basis to the TO. During full deployment the company can support a force of 165,000 Soldiers. Additionally, individual sections may be deployed from the company as the mission and logistical requirements dictate. This allows supported units the flexibility required to operate within the COE. However, the increased modularity places additional responsibility upon the MA staff officer to produce accurate MA estimates. The estimates prepared are used as the key planning factors for determining both the deployment timeline and assets deploying.

3-16. As the QM MA Company (EAC) is designed to support operations across an entire theater, placement of assets must be thoroughly coordinated. The key commands that determine actual placement of many of the assets are the JMAO, and the TSC Sustainment Operations Division. The EAC company commander and first sergeant play an integral role in the coordination between these staff elements. They must take the initiative and be aggressive during the planning process to ensure proper assets and personnel arrive to establish the necessary operations to ensure the MA mission success.

3-17. Once coordination is complete and unit placement is determined, the placement location must be published to the units within the JOA. All remains within the JOA will be evacuated through the TMEP. Therefore, this notification must be to all Services, not just Army forces.

3-18. The PE Depot Platoon may or may not be located within the JOA. If it is determined that the PE depot best supports the mission by being assigned within the JOA, then it will generally be colocated with the TMEP. All units must know the location of the PE depot as they are required to send the PE of killed in action (KIA) and missing in action (MIA) Soldiers and civilians through this element. Additionally the PE Depot must be prepared to accept the PE of enemy combatants, local nationals, coalition partners, and any other individual who is killed within the JOA.

3-19. The Evacuation/Interment Platoons will generally be assigned to the Sustainment Command (Expeditionary) or a sustainment brigade assigned to the theater within the assigned JOA. The assigned location must be near an aerial port of embarkation (APOE). The Evacuation/Interment Platoon must be assigned to an area that is large enough to support the TMEP mission. For more information on the TMEP mission, reference JP 4-06.

3-20. Upon full company deployment, the commander of the QM MA Company (EAC) will be the subject matter expert advisor to the lead agent of the JMAO and TSC, G4 Sustainment Operations Division. The commander will also act as a liaison between the JMAO and TSC, with the responsibility to ensure proper placement and care of all QM MA Company (EAC) assets. It is imperative that the commander integrate into the JMAO and establish communications with all participating Services and coalition partners to ensure dissemination of important MA policies and procedures unique to the JOA.

3-21. At a point designated by the JMAO and the QM MA Company (EAC) commander, the Support Operations Section will be integrated in the TSC, G4 Sustainment Operations Division. The Company Support Operations Section is responsible for MA planning within the JOA. This includes overseeing all theater MA assets and tracking the proper evacuation and shipment of all remains and PE.

3-22. The first sergeant of the QM MA Company (EAC) is attached to the JMAO upon deployment. Once assigned, he or she will become the subject matter expert for the JOA. The first sergeant is responsible for preparation and review of the MA appendix/annex within the joint OPLAN/OPORD while still administering the inherent first sergeant responsibility of caring for the troops. This is done by ensuring that all MA troops are properly assigned to their supported units and that they are given the proper support needed to accomplish the MA mission.



## CAPABILITIES

3-23. At TOE Level 1 the company is capable of establishing two TMEPs for coordinating the receipt, processing, and evacuation of remains. The company can also establish a PE depot for coordinating the receipt, processing, and evacuation of PE. In addition to the TMEPs and PE depot, the company can establish up to 5 MACPs, which are able to receive, process, and coordinate evacuation for a total of 20 remains per day, including the receipt and inventory of associated PE.

- Each TMEP platoon is capable of processing and coordinating the evacuation for up to 250 remains per day.
- If the two TMEP platoons combine and are augmented with civilian TDA personnel, the company can operate one in-theater mortuary capable of embalming and coordinating the evacuation for up to 50 remains
- If operating under the Graves Registration Program and augmented by engineer support, each TMEP Platoon is capable of interring up to 250 remains per day.
- Each MACP is capable of processing up to 20 remains per day. This capability includes the receipt, processing, and evacuation of remains along with the receipt, inventory, and evacuation of all PE associated with the remains.

3-24. At TOE Level 2 the operational capabilities of the company are reduced to approximately 90 percent of the TOE Level 1 capabilities.

3-25. At TOE Level 3 the operational capabilities of the company are reduced to approximately 80 percent of the TOE Level 1 capabilities.

3-26. Soldiers assigned to support a unit can assist in the coordinated defense of that unit's area. When consolidated, the company can provide unit level food service support and maintenance on all organic equipment, except communication security equipment.

3-27. Personnel strength levels determine other capabilities, which are described within TOE 10690F

## MOBILITY

3-28. The QM MA Company (EAC) can move 100 percent of its TOE equipment and supplies in a single lift by using 33 percent of its authorized organic transportation assets. The unit should not relocate until all received remains are completely processed and evacuated.

3-29. If individually deployed, the MACPs are 100 percent mobile using organic section equipment upon evacuation of all remains.

## REQUIRED SUPPORT

3-30. The company is capable of providing its own unit maintenance (except COMSEC maintenance) and food service when the company is collocated.

3-31. When deployed in support of operations, the individual sections and platoons require external support. The support is often provided by the appropriate sustainment brigade. This support relationship is especially challenging for the staff planner because of the low density of the equipment and repair parts of much of the essential MA equipment.

3-32. When allocating the placement of the MACPs the commander and first sergeant of the QM MA Company (EAC) must ensure that the appropriate C2 structure is in place. FM 5-0 lists support and reporting responsibilities for the different C2 applications.

### Required Support

- Life support
- Religious/spiritual health
- Combat health
- Legal
- Financial
- Engineering
- Additional transportation
- Personnel services
- Unit level COMSEC maintenance

3-33. MA Command controlled supplies and equipment, such as U.S. flags, will be managed by the JMAO and “pushed” to MA elements. Based upon the COE, reusable command controlled items, such as human remains TCs may be “pushed” down to the MACP level based upon the COE.

## SITE SELECTION/ESTABLISHMENT

3-34. Site selection for the MACPs is dependent upon the unit of attachment and the defensive structure of the units. Generally the MACPs will be assigned to the ASGs to provide theater support on an area basis. Once assigned to a support unit within the ASG the MA personnel and assets will be tied into that assigned unit’s overall defense plan. MACP specific site selection criteria can be found in JP 4-06.

3-35. Site selection for the TMEP is based upon the locations of major APOEs within the TO. The TMEP must have quick, easy access to both flight lines and helipads. Remains will most likely arrive to the TMEP in either rotary or fixed wing aircraft. Additionally, as coordinating and evacuating remains to the mortuary is done via strategic air lift, the evacuation section of the TMEP must be able to directly contact Air Mobility Command (AMC). Preference is given to fixed facilities for actual layout and operation of the TMEP. For additional information on site selection for a TMEP, reference JP 4-06.

3-36. Once established, the TMEP can function as a PE transfer point for pre-inventoried PE. When functioning as a PE transfer point, the TMEP will receive, store, safeguard, and coordinate evacuation for pre-inventoried PE from the units in theater.

3-37. Upon arrival at an assigned location the platoon/section NCOIC will notify both the assigned unit and the MA higher headquarters. The NCOIC will then implement work priorities in order to quickly begin receiving remains. Once the MACP is established and ready to receive remains the NCOIC will inform both the supported unit and the MA higher headquarters.

## OPERATIONS

3-38. When deployed, MA leaders must strive to identify shortfalls within their operations. Once identified they must inform the command about the shortfall and the costs associated with mitigating or not mitigating the shortfall. It is imperative that MA leaders are continually updating the supported commands about shortfalls and their impacts on MA capabilities.

3-39. Prior to deploying to a specific theater the commander or a designated representative must coordinate with the TSC representatives for the deployment. The key areas of coordination are TPFDD synchronization—specifically matching unit personnel to unit equipment—and identification of equipment shortfalls.

3-40. Upon deployment the commander and first sergeant must work closely with the TSC, Assistant Chief of Staff (ACofS), G4, Sustainment Operations Division. This coordination provides the MA leaders visibility over transportation, personnel, and logistics assets throughout the TO for MA issues. This relationship also provides the MA leadership the assets necessary to mitigate any MA issues immediately—specifically any issues concerning transportation, communications, and C2.

3-41. Ideally the individual MACPs will link up with their supported units following the RSOI process. This requires initiative on the part of the Collection Platoon leader and platoon sergeant. After each of the five sections from the Collection Platoon is assigned, the platoon leader and Platoon Sergeant become senior MA Advisors to the Sustainment Operations Division of the senior sustainment element (the TSC or sustainment brigade)..

3-42. NCOICs of all QM MA Company (EAC) units will report to the Commander of the SC(E) to which they are attached. However, MA issues will still be

### Sample Priorities of Work

- Tie in with adjacent units
- Establish site security
- Establish communication
- Establish life, personnel, medical and engineer support
- Establish habitual transportation link
- Prepare road network
- Prepare refrigeration
- Construct munitions holding area
- Prepare to receive remains

reported through MA channels. Additional reporting requirements are based upon the supported units LOGSITREP SOP.

3-43. NCOICs are also responsible for initiating priorities of work to expedite the establishment of their MA site. This specifically includes establishing and maintaining site security over the site. As more reporters and media are embedded into our fighting forces, MA leaders need to ensure they are controlling access to the receiving, processing, and evacuation areas. MA leaders have an inherent responsibility to ensure that family members do not see their loved one on a newscast before being notified by the CAC.

3-44. MA leaders at all levels should coordinate daily with the appropriate individuals who have oversight for MA issues. They must also attend recurring briefings to obtain current and vital information needed to make informed MA decisions. This will ensure the accurate flow of information on MA issues passes through the chain of command.

3-45. When refrigeration of remains is required, MA leaders must use the FIFO concept. The first remains placed in the refrigeration unit will be the first remains removed for processing and evacuation.

- The refrigeration unit is not to be used as a “storage” unit and should not be factored into the planning estimates as such. The refrigeration unit is to be used strictly to hold remains until they can be processed.
- No other items, such as Class I or medicines should be placed inside MA refrigeration facilities.
- If additional MACP refrigeration assets are required, the NCOIC should contact the Sustainment Operations Division of the supported unit to initiate augmentation by external units or local contract.

3-46. It is essential that leaders give Soldiers the tools and assets necessary to deal with the stresses they encounter while deployed. MA leaders must ensure that after deployments Soldiers are allowed to decompress after dealing with death daily. This is done by coordinating with the chaplain and mental health personnel to plan and implement a decompression program upon a Soldiers’ return from deployment.

**This page intentionally left blank.**

## Chapter 4

# Mortuary Affairs in Full Spectrum Operations

---

*The importance of mortuary affairs on the modern battlefield is evident. The U.S. citizens expect a fallen soldier to be brought back home. The basis of mortuary affairs is found in the training of soldiers, search and recovery procedures, identification of fallen comrades, and appropriate burial that includes the performance of military rites for the deceased. The bottom line in today's Army is that soldiers train to find, recover, identify, and bring home all fallen comrades. The goal is no more unknown soldiers.*

QM Professional Bulletin, Winter 1998

---

In all environments, the initiative of Army leaders, agility of Army units, depth of Army resources, and versatility of Army Soldiers combine to allow Army Forces to conduct decisive full spectrum operations. Commanders synchronize offensive, defensive, stability, and support operations to defeat any enemy or dominate any situation—anywhere, anytime. While FM 3-0 describes the doctrine of full spectrum operations, this chapter specifically discusses MA support to those operations, providing a guide to MA planners. MA has a direct influence upon operations through its effect on the morale of Soldiers, civilians, public opinion, the national will, the ethical treatment of enemy combatants and local nationals.

## OFFENSIVE OPERATIONS

4-1. Offensive operations are characterized by speed, precision, mobility, and high intensity. These operations generally seek to seize, retain, and exploit the initiative to defeat the enemy decisively. Army forces attack simultaneously throughout the area of operations (AO) to throw enemies off balance, overwhelm their capabilities, disrupt their defenses, and ensure their defeat or destruction. Often during offensive operations, planning is conducted in a time-constrained environment where the focus is to quickly develop a flexible, tactically sound, and fully integrated and synchronized plan.

4-2. Casualty rates of friendly forces tend to be higher during offensive operations. The higher casualty rate is generally coupled with fast-paced forward movement of troops and material. With these characteristics in mind the MA planner must ensure that adequate assets are allocated and placed for the operations. Plans should be flexible enough to allow for units to adapt to the rapidly changing situation. In addition to operational flexibility, MA plans must provide mobility and options to the combatant commander. The MA planner must ensure that the commander is not limited to one COA because of mismanagement or inadequate MA planning.

4-3. Planners must consider the higher casualty rates as well as the more frequent moving of the logistics bases associated with offensive operations. Often during offensive operations ground LOCs are congested with the forward movement of troops and material. Additionally, on the noncontiguous battlefield the LOCs may begin to lengthen between the rapidly moving force and the support areas from which the MA personnel will be working. These factors place greater importance on MA planners coordinating the expedient evacuation of remains. Remains must be evacuated to the TMEP as quickly as logistically possible using every evacuation means available to the unit.

4-4. MA Planners must continually emphasize the importance of evacuating remains using any assets available, specifically ground and air backhaul. The fact that evacuating remains is always a national priority, coupled with the instability and congestion of ground LOCs, places greater emphasis on air evacuation during offensive operations. Refrigeration assets are not to be used as a “storage” area. They are only authorized for holding remains until all processing is complete and evacuation assets have arrived.

## DEFENSIVE OPERATIONS

4-5. Defensive operations are not a passive activity nor are they stationary units awaiting an attack. Defensive operations use mobile and static elements. Operationally, the defense is used to buy time, economize forces, and develop conditions favorable for resuming offensive operations. Commanders will position sustainment MA assets to best support the forces in the defense and survive.

4-6. Sustainment MA planners must have full understanding of the operations and the commander’s intent. Specifically, planners must be prepared to reassume any offensive operations projected to follow the defense. The plan must take into account both the enemy’s most probable course of action (MPCOA) and the most dangerous course of action (MDCOA). These two courses of action will have direct impact on the placement of MA assets in the AO. Specifically, these COAs will determine current and projected locations of the MACPs and MADCP.

4-7. MA planners must strive to support the defense in depth. Because of the fixed nature of MA assets and evacuation routes, they are more vulnerable to enemy action. MA planners must identify both primary and secondary LOCs for evacuating the remains of friendly, enemy, and local nationals. Owing to the unique nature of defensive operations, MA units will handle fewer friendly remains but have the chance of handling increased numbers of enemy and local remains. Planners must be aware of this, and ensure that policies and procedures are established for the prompt, dignified return of these remains to local government officials. Coordination may be made with the JMAO for clarification on these policies. Only the GCC can authorize temporary interment of remains and only when no evacuation means exist.

4-8. Individual units must identify MA evacuation plans for all units, including reconnaissance assets located away from the defensive lines. Additionally, units must develop contingency plans and/or alternate evacuation routes for remains if their supporting MACP is lost to enemy activity. As with all operations, refrigeration assets are not to be used for the “storage” of remains. Refrigeration units are used only to hold remains until all processing is complete and evacuation assets have arrived. MA units must arrange to evacuate the remains to the TMEP as quickly as possible.

## STABILITY OPERATIONS

4-9. Stability operations are often conducted in noncontiguous areas of operation (AOs). Stability operations are often time and manpower intensive; they are inherently complex and place great demands on small units. The MA planner must take into account the noncontiguous operational environment. MA assets must be placed into positions that best support the commander’s intent and increase the effectiveness of the overall mission. Sustainment and MA in stability operations often involve supporting U.S. and multinational forces in a wide range of missions. These missions range from long-term logistics-focused operations in humanitarian and civic assistance (HCA) to major short-notice peace enforcement missions. Sustainment, specifically MA assets, must be tailored to the specific requirements of the stability mission.

4-10. Often MA assets operate far from their traditional LOCs. MA Units must be tailored to the actual mission, and may therefore be deployed in nontraditional methods. For example, an MACP positioned on an APOE in a small-scale stability operation may serve as its own TMEP if the estimated casualty rate is less than 20 per day. In such a situation the MA planner must ensure that evacuation assets leaving the APOE have the capability of reaching a port of entry (POE) mortuary.

### **Operation Uphold Democracy**

U.S. forces return fire, killing 10 Haitians. Not having clear guidance, the unit placed the remains in an unrefrigerated warehouse. Remains were held for 20 hours, until U.S. forces convinced local hospital officials to accept the remains. The hospital administrator ordered civilians to bury the remains because of the lack of a refrigerated mortuary facility. The Haitian government then requested to have the remains disinterred and transported to the capital for a state funeral. The U.S. ambassador and theater commander agreed to the request and U.S. Soldiers from the 54<sup>th</sup> Quartermaster Collection Company (MA) located and disinterred the remains, evacuating them to the Haitian capital. If the MA Annex had addressed the issue and policies had been in place, the remains could have been immediately returned to the local national control, eliminating the potential for negative media coverage or political relations.

4-11. For MA personnel, stability operations often result in frequent and direct contact with the local population. Planners must define the process of how to return civilian remains to the local government. This includes not only the remains of the local national population, but those of any additional subcontractors brought into the AO in support of the operation. Due to the increased contact with the local population, MA personnel may be required to operate locally contracted equipment and/or facilities. The contracted equipment may be either integrated into the existing MA assets or used to establish separate MA facilities.

4-12. As offensive and defensive operations may be necessary to defeat enemies that oppose a stability operation, MA plans for stability operations must remain flexible at all times. MA plans should include handling the remains of joint and multinational coalition soldiers, civilians, and contractors in the AO. Often the desired end-state of stability operations is not a short-term goal but requires a long-term commitment. Owing to the unique nature of the MA mission, a long-term plan must include a rotation schedule for MA personnel. The schedule must include adequate time for a battle handoff to the incoming unit and decompression time for the returning personnel.

## **SUPPORT OPERATIONS**

4-13. Generally, the adversaries in support operations are disease, hunger, or the consequences of disaster. Often the operations are short in duration and meant to assist the local government in regaining control of the situation. Sustainment operations are often the primary focus, and therefore the decisive factor within support operations.

4-14. The key to success in support operations is interagency coordination. MA planners must coordinate not only with other Army units, but also other Services, agencies, and nongovernmental organizations (NGO). Actual agencies requiring coordination will vary depending on the operation.

4-15. The mission of MA personnel within support operations varies widely and is based upon the specific requests from the host government. Often MA personnel will be required to quickly deploy to the specific region or nation in support of a natural disaster. This gives the force limited time for preparation, and it will often deploy only with mission-essential equipment and personnel tailored to support the request. Therefore, it is essential that MA planners clearly understand the host government's request and convey the full requirements to the deploying force.

4-16. Additional information and guidance concerning MA support operations can be found in JP 4-06.

## **MULTINATIONAL AND JOINT OPERATIONS**

4-17. Although each country is responsible for providing sustainment and MA support for the forces it deploys, varying degrees of common user logistics (CUL) support in multinational operations can be expected to achieve economy of effort and to avoid duplication. Allies and coalition partners can delineate responsibilities among themselves based upon theater requirements. They may also request U.S. MA

support through the JMAO. As stated within JP 4-06, the JMAO is the deciding authority on MA support to other nations.

4-18. Multinational commanders typically form multinational sustainment staff sections to facilitate sustainment coordination and support multinational operations. The TSC may serve as the building block for this organization. Ultimately, MA planners must be represented within this multinational sustainment staff. Multinational MA planning is a major challenge. Possible problem areas include cultural differences, doctrinal differences, interoperability of C2 systems, competition and jealousies among Services and nations, and national resource limitations. MA reporting and visibility is required within multinational operations as is required in purely U.S. operations. No matter what the overall mission, U.S. MA planners must strive to ensure that all remains are treated with the appropriate dignity, reverence, and respect.

4-19. Army Field Services, of which MA is a part, are equivalent to the Services functions of Joint Logistics. Joint MA responsibilities are covered in JP 4-0 and JP 4-06.



## Chapter 5

# Unit Mortuary Affairs Responsibilities

Commanders of all units within the DOD have the responsibility to care for deceased personnel within their AO. This responsibility includes the search for, recovery, and evacuation of remains and associated PE to the MACP. In addition to the initial search and recovery of remains within the AO, unit commanders are responsible for the proper integration of all MA assets.

### SEARCH AND RECOVERY

5-1. The search for and recovery of remains is the first step in the care and handling of deceased personnel. A search and recovery operation is the systematic process of searching for remains and PE, plotting and recording their locations, and evacuating them to an MA facility. Commanders must make every reasonable effort to successfully search for, recover, and evacuate all remains within their AO.

5-2. Commanders may be tasked to conduct search and recovery operations for remains of individuals of other nations or Services. Commanders at all levels must understand that search and recovery operations are a unit level task during the conflict phase. When remains are located in an area, often the unit responsible for that AO will be tasked with conducting the search and recovery. The tasked unit may request additional support or advice from their supporting MACP, but ultimately the tasked unit is responsible. Guidelines for planning, coordinating, and executing search and recovery operations are listed in JP 4-06.

### SEARCH AND RECOVERY TEAM

5-3. All commanders must have a search and recovery team appointed on orders within their unit. This team should consist of at least five Soldiers, with a minimum of one NCO assigned as the team leader. The team leader is ultimately responsible for the safety of the team members and the success of the mission.

5-4. MA NCOs assigned to support battalions are responsible for the training of Non-MA unit search and recovery teams. Unit commanders will ensure that this training is conducted at least semiannually. If additional training support is required, a mobile training team (MTT) may be requested from the MAC located at Ft. Lee, VA. MA units or MACP teams may be requested through command channels for integration into scheduled Combined Training Center (CTC) rotations. Requests will be approved by FORSCOM depending upon unit availability.

5-5. Team members must clearly understand the unique requirements and demands that are encountered when dealing with human remains. Unit leaders must ensure that all appointed team members are given the high-risk occupation immunizations (reference AR 40-562) in addition to access to mental health and spiritual support as needed.

### SEARCH AND RECOVERY PLANNING

5-6. The tasked unit commander or designated NCOIC is responsible for overall team safety and information gathering concerning the search and recovery. The safety of the search and recovery team is paramount to the success of

#### Required S&R Information

- Enemy activity
- Required security
- Recovery site
- Number of remains (if known)
- Required search and recovery personnel
- Transportation to and from recovery site
- Required supplies
- EOD support
- Engineer support
- Witness statements required
- Communication requirements
- Weather

the mission.

5-7. Once all the pertinent information is gathered, coordination must be initiated. As the factors of mission, enemy, terrain and weather, troops and support available, time available, civil considerations (METT-TC) will greatly influence different missions, search and recovery teams may require coordination with several different outside agencies or units. It is essential to mission success that personnel are present who are familiar with the equipment and munitions located at the search and recovery site. Some specialists include explosive ordinance disposal (EOD), engineers, CBRN and any others required. Additionally, designated team leaders will select a search pattern to be used by the team upon arrival at the search and recovery site. Sample search patterns and additional coordination requirements are listed within JP 4-06.

### Search and Recovery Steps

- Secure the area
- Search the area during daylight hours
- Sketch and record data
- Check for booby traps
- Tag all remains/portions/effects
- Load/evacuate to nearest MA facility

5-8. Search and recovery operations will only be conducted during daylight hours. Team leaders will ensure that strict search discipline is maintained and that the whole area is searched completely. The team leader ensures that the search and recovery is conducted in the proper manner and the proper report(s) (*Human Remains Search and Recovery Status Report – REMAINSARSTAT*) is completed (*FM 101-5-2, U.S. Army Reports and Message Formats*). If remains are irretrievable or incomplete (missing major portions), the proper reports will be initiated (see appendix C).

## HEALTH AND SANITATION

5-9. One of the intrinsic dangers of search and recovery operations is the sustained contact with human remains. Proper personal health and sanitation practices are vitally important as handling remains in various stages of decomposition can result in both medical and biological hazards. Infectious organisms may be associated with remains and the areas where remains are found or processed. The necessary handling of remains during search and recovery operations may cause these organisms to spread to those physically handling the remains. Therefore, each search and recovery team member and any other personnel involved in the recovery, evacuation, or processing of remains must ensure successful implementation of health and sanitation procedures.

5-10. To prevent the spread of infection, personnel handling remains should adhere to the following health and sanitation guidelines:

- Always wear disposable surgical or rubber gloves when handling remains. Discard the gloves after each use.
- Wear a protective oral-nasal mask designed to protect inhalation of infectious organisms.
- Scrub hands, forearms, and any other body portion that came into contact with the remains or the bodily fluids of the remains. Use a medicated or disinfectant soap.
- Shower, cleansing the entire body, including the hair at the end of the duty day in which remains were handled.
- Dispose of all contaminated protective equipment in the proper manner. Dispose of items by either incinerating them or turning them over to the proper biological hazard collection facility.
- Thoroughly disinfect all equipment that came into contact with the remains or fluids of the remains.

5-11. Additional guidelines for the protection of personnel handling remains can be found in TG 195 and JP 4-06.

## SUPPLIES

5-12. Commanders of all units in the DOD are responsible for the initial search and recovery of remains located within their AO. The personnel assigned as search and recovery team members are responsible for ensuring that the required MA supplies are on hand and serviceable.

5-13. Quantities of supplies within a packing list should be based upon 10 percent of the unit's strength. A sample packing list of MA supplies and equipment includes the following (NSNs can be found in JP 4-06):

- Pouch, human remains.
- Bag, personal effects.
- Litter.
- Zip-lock bags (12 inches x 12 inches).
- Metal pegs/engineer flags.
- Tags—plastic-coated fiber preferred.
- Railcar seals (serial numbered).
- Graph paper.
- DD Form 565 (*Statement of Recognition of Deceased*).
- DD Form 567 (*Record of Search and Recovery*).
- DD Form 1075 (*Convoy List of Remains of Deceased Personnel*).
- DD Form 1076 (*Military Operations Record of Personal Effects of Deceased Personnel*).

## INTEGRATION OF ASSIGNED MA ASSETS

5-14. MA companies and personnel are deployed throughout the entire JOA and therefore require proper integration and support to successfully carry out their mission. Staff elements at all levels of command must understand the importance of providing the proper support to MA personnel. Often the MA mission is not thought about until it is too late. Commanders must ensure that adequate planning and support is in place to prevent an MA mission failure. Several vital military and political objectives hinge upon the success of the MA mission. A failure within the MA mission or disrespectful handling of remains can have a negative impact on one of the following key areas:

- Troop morale within the losing unit.
- National public support.
- Coalition support.
- Local national support.
- Enemy treatment of remains and/or prisoners.

## OPERATIONAL LEVEL INTEGRATION

5-15. Successful integration begins at the operational level. MA planners must carry out several key steps to ensure the MA mission does not fail. These processes are not linear and may occur simultaneously. Additionally, the TPFDD is not static; units arriving are based upon real-world situations and events. Therefore, MA planners are required to continually update and rework their portion of the OPLAN.

- The first step is a thorough TPFDL scrub to ensure adequate MA resources are allocated to the theater. This determination is based upon OPLAN analysis and casualty estimates for all forces and civilians in the JOA.
- Next, the MA planner will assign allocated MA resources to specific units listed on the TPFDL. This allocation of resources is based upon OPLAN analysis and is designed to ensure that adequate MA resources are positioned to support current and future operations. The proper C2 relationship must be clearly identified and articulated to subordinate units. (See appendix B.)
- Once MA resources are allocated to a specific unit, MA planners will ensure that these MA assets will flow into the same APOE, SPOE, or staging area as the supported unit. To expedite this integration, MA planners will ensure MA personnel arrive with, or as close as possible to, the MA equipment.
- Once MA personnel and equipment arrive and link up, they must successfully integrate into their supported unit. Successful integration of MA assets with the supported unit facilitates the completion of the RSOI process and allows the GCC to generate combat power.

## TACTICAL LEVEL INTEGRATION

5-16. Tactical units must strive to ensure successful integration of their assigned MA equipment and personnel. Logistics planners must execute several key steps to achieve this goal.

- Units will receive allocated MA assets from higher command; once assigned, every effort must be made to complete the integration process prior to the unit starting operations. If successful integration is not possible, it is the staff planners' responsibility to ensure that commanders are informed of the tactical and political risks associated with conducting operations with no MA assets.
- Planners must develop and inform the supported unit of their C2 relationship with MA assets. To facilitate the proper reporting and reassignment of MA assets, it is imperative that this relationship is clearly defined and understood.
- All subordinate units must be informed on the proper evacuation procedures for both human remains and PE. This includes PE associated with the remains and PE left in the unit areas.

5-17. Planners must ensure that all subordinate units are informed about the priorities for forward and rearward movement of troops and material. Evacuation of human remains must always be of the utmost priority.

## PERSONAL EFFECTS

5-18. AR 638-2 and DA Pamphlet 638-2 are the references used when determining the disposition of PE. This FM is not intended to be used as a sole source of information for handling PE. AR 638-2 provides a listing of personnel for whom the Army has jurisdiction concerning PE.

5-19. PE are the moveable personal property of the deceased or missing person. PE include but are not limited to—

- Jewelry (watches, rings, bracelets, earrings, and so forth).
- Personal clothing.
- Personal papers (letters, receipts, will, and so forth).
- Books and stationary items (religious publications, reference volumes, magazines, paperbacks, pens and pencils, and so forth).
- Personal hygiene articles (shaving cream, razor, toothbrush, cosmetics, and so forth).
- Electronic appliances and accessories (personal computer and related equipment, radio, televisions, compact discs, digital video disks, audio tapes, and so forth).
- Tools.
- Household goods.
- Personal vehicles, such as automobiles and trucks.
- Hobby material, craft supplies, collections.
- Religious items, such as Bibles, Torahs, Korans, rosaries, menorahs, and so forth.
- Sporting equipment.
- Money.

5-20. While the list of PE is long, several items are not considered PE. When inventorying PE, units must identify and segregate the following:

- Classified material, either digital or hard-copy.
- Organizational clothing and individual equipment (OCIE).
- Hazardous materials, explosives, flammables, corrosives, and/or oils.
- Contraband items, such as drugs, war trophies, and so forth.
- Items not of sentimental or saleable value that may damage other PE in shipment (open mouthwash, open containers of soda, food, and so forth).
- Items damaging to the memory of the decedent (see AR 638-2, chapter 20).

5-21. PE can be found in several areas on and off remains and in or around unit areas. PE found on the remains are often referred to as associated PE. Associated PE are inventoried and secured at the receiving MACP. It is

the unit's responsibility to inventory, safeguard, and ship PE located in the unit area for all killed and missing Soldiers. Per AR 638-2, when inventorying PE outside a TO (current death), use DA Form 54 (*Record of Personal Effects*); in a TO (concurrent return/graves registration), use the DD Form 1076 (See appendix C). Responsibilities for different areas where PE are found include, but are not limited to—

- On the remains—the PE are considered associated PE and are inventoried at the first possible MA facility within the evacuation process.
- At the unit—the disposition of PE is a unit responsibility with Casualty Assistance Command assistance and guidance. During the Current Death Program, the unit will send the PE directly to the PERE. During Concurrent Return, the unit will send the PE to their supporting PE depot.
- In hospitals—often PE and clothing are removed from the decedent while being treated medically. These items should be logged on a DA Form 4160 (*Patient's Personal Effects and Clothing Record*). It is essential that the appointed summary court martial officer (SCMO) follow up on these items. Often they will be returned to the losing unit for them to inventory and ship.
- In rear areas—IT is the responsibility of the commander with summary court martial authority in that area to appoint an additional SCMO, generally the rear detachment commander, to inventory and ship all PE within the Army's jurisdiction in accordance with AR 638-2.

## **UNIT ACTIONS**

5-22. The unit commander of deceased, missing, and captured Soldiers has operational responsibility to recover, safeguard, and make further disposition of the effects of members of his or her command. Per AR 638-2, an SCMO will be appointed by the summary court martial convening authority over the decedent's unit. The unit must assist the SCMO in quickly and accurately inventorying all PE for shipment to the proper location. Units must keep AR 638-2 and DA Pam 638-2 on hand to facilitate the quick and accurate inventory and evacuation of PE.

5-23. It is a judgment call of the unit SCMO responsible for inventorying the PE to determine if an item may or may not be damaging to the memory of the decedent. Items determined to be damaging to the decedent will be inventoried on a form that is not forwarded to the PERE and the effects will be destroyed. Have a Soldier who was close to the deceased or missing personnel assist with the process of determining and segregating items that may or may not be damaging to the deceased or missing personnel. If no determination can be made at the unit level, the items will be inventoried and sent to the appropriate PE Depot.

5-24. Per AR 638-2 and DA Pam 638-2, the SCMO will complete a certificate of destruction for all items destroyed and a certificate of items withdrawn for all items withdrawn. Items listed on these certificates will not be included on DA Form 54 or DD Form 1076.

## **TACTICS, TECHNIQUES, AND PROCEDURES**

5-25. PE disposition is an extremely sensitive area for the loved ones of the deceased. Often the successful return of PE is one of the lasting contacts that loved ones have with the deceased or missing personnel. This mission must be conducted quickly and accurately; there is no margin for error. Units can use several tactics, techniques, and procedures (TTP) to assist them with inventorying PE:

- Always inventory PE in two-person teams. While one person describes the object, the other will transcribe what is described onto the appropriate inventory form.
- Fill out the inventory form (DD Form 1076 or DA Form 54, depending on location) in triplicate. One copy goes with the case file of the deceased or missing person, one copy goes with the PE, and one copy will remain with the unit.
- All paper currency must be inventoried by denomination and serial number.
- Initiate a separate inventory form for items that will be signed for by different entities. For example, the Defense Finance and Accounting Service (DFAS) will sign only for cash; therefore, inventory all cash on a separate form.
- Units should maintain a record of all inventories conducted to preserve chain of custody.
- Include serial numbers of every piece of PE that has a serial number.

- Do not describe items by what you believe them to be. Do not automatically assume that gold-colored wedding bands are gold or that the clear stones are diamonds.
- Ensure that the items being inventoried are not on a Government hand receipt.

## Appendix A

# Sample Unit Mortuary Affairs SOP

**1. PURPOSE.** To establish procedures for the recovery, identification, and disposition of remains and personal effects of remains found on the battlefield within the 34th Infantry Division (ID).

**2. GENERAL.** Mortuary Affairs (MA) operations within the 34th ID are conducted at the BSB and infantry brigade combat team (IBCT) level. Additional mortuary support is provided through the 1<sup>st</sup> Sustainment Command (E) when a Quartermaster Company Mortuary Affairs (MA) is attached or OPCON.

### **3. RESPONSIBILITIES.**

**a. 1st COSCOM.** 1<sup>st</sup> Sustainment Command (E) is the executive agent for MA activities in the XVIII Airborne Corps:

(1) Provide direct support (DS) to units within the corps area of responsibility (AOR) in processing, identifying and evacuating human remains and personal effects.

(2) Arrange for additional assets for individual units when recovery of remains exceeds their capabilities in the corps AOR.

(3) Provide technical assistance in the recovery and processing of human remains to units.

(4) Coordinate with the Joint Mortuary Affairs Office (JMAO).

(5) Investigate all congressional inquiries as required by the JMAO.

(6) Coordinate through echelons above corps (EAC) for mortuary specific items required to conduct mortuary operations.

(7) Track the number of remains processed through the corps/Joint Task Force (JTF) collection points.

(8) Develop and publish supporting plans and procedures for MA operations.

(9) Coordinate with EAC and other designated agencies (for example, the International Red Cross) for transferring the remains of deceased allied, enemy, or civilian personnel.

(10) Coordinate through JMAO to geographic combatant commander for permission to establish temporary interment/disinterment operation if needed.

(11) Coordinate evacuation of human remains from collection points to the theater's mortuary evacuation point/personal effects depot.

**Figure A-1. Sample unit mortuary affairs SOP**

(12) Maintain adequate supplies of mortuary affairs specific items to conduct daily operations.

(13) Inform the G-4 of problems at the collection points that must be resolved by corps.

**b. Assistant Chief of Staff (ACofS, G4)**

(1) Provide staff supervision over MA in the division.

(2) Develop policies and procedures regarding the proper disposition of human remains and personal effects within the division AO.

**c. Divisional units.**

(1) 1st, 2nd, 3rd, and 4th IBCT will be responsible for coordinating and providing life support for MA collection points within their AOR.

(2) Conduct search, recovery, and evacuation operations of all deceased personnel within their AOR, regardless of branch of Service or nationality.

(3) Transport remains and personal effects by the most expeditious means to the nearest collection point.

(4) Establish and train company recovery teams in accordance with FM 10-64 and JP 4-06. Units must ensure team members have required vaccinations and personal protective equipment (PPE) in accordance with the U. S. Army Center for Health Promotion and Preventive Medicine (USACHPPM) Training Guide (TG) 195.

(5) Develop hasty evacuation plan for removing remains in the event that the number of KIA overwhelms MA teams.

(6) Each IBCT is required to have on hand 10 percent of human remains pouches of unit strength. The only remains pouches authorized for use is national stock number (NSN) 9930-01-331-6244 type 2A.

**4. DIVISION MORTUARY AFFAIRS OPERATIONS.**

**a. Intent.** The division policy is to immediately recover, process, and evacuate remains (with personal effects) from the area of operations to corps. The division goal is to achieve this as soon as it is tactically possible, using the following flow of remains:

(1) Clear the area of operations in 2 hours.

(2) Remains will be processed NLT 4 hours after arrival at the collection point. Augment personnel if necessary.

(3) Command emphasis must be placed on remains evacuation to minimize decomposition and ensure the remains of our fallen comrades are treated with the utmost dignity, reverence, and respect.

**Figure A-1. Sample unit mortuary affairs SOP**



(4) CENTCOM 638-1 states: PARA 4.4.6. Departure ceremonies, fallen Soldier details, or other ceremonies are not authorized in theater unless specifically approved in writing by the first general officer in the chain of command. Such requests may only be approved if they will not delay the scheduled evacuation of the deceased's remains. Such requests must be considered on a case-by-case basis, and a copy of the approved request must be provided to the Theater Mortuary Affairs Executive Agent TMAEA at least 12 hours before the scheduled departure time of the aircraft to ensure proper arrangements can be made with the Air Force.

(5) Human remains being transported from place of death to the mortuary affairs collection point (MACP) or from MACP to MACP via vehicle or rotary aircraft will be placed in a human remains pouch. Remains traveling on fixed-wing aircraft must be transported in a transfer case.

(6) Secretary of Defense (SecDef) MEMO, 3 December 2003, *Subject: Policy on Forensic Investigation of Service Members Killed in Service* (located within the Armed Forces Medical Examiner system), requires that human remains be placed in a human remains pouch with a minimum of handling, consistent with personnel safety. Do not remove any gear (including helmets, vests, safety equipment, or other organizational equipment) or clothing. All items on the remains, except weapons, ammunition, classified documents, and hazardous material, are to be shipped with the remains. Organizational items will be returned to the supply system when the Office of the Armed Forces Medical Examiner (OAFME) releases the remains.

**b. Recovery of remains:**

(1) Unit commanders are responsible for recovering deceased personnel within their area of responsibility. Searches will be made as the tactical situation permits. Augmentation may be required to conduct search operations.

(2) Units are required to provide the necessary logistical support and security to conduct recovery operations.

(3) Conduct all recovery operations in accordance with JP 4-06.

(4) Keep remains shrouded at all times and under constant security. Remains should be shrouded in a human remains pouch or other suitable material (i.e. poncho, blanket, or sheet).

(5) Units are responsible for the control of remains until received at a MA collection point.

(6) Units are responsible for the immediate evacuation of remains to the nearest MA collection point. The unit representative will take custody of the decedent's weapon and mission critical equipment. All individual body armor and protective gear will be evacuated with the remains.

(7) Medical facilities are responsible for evacuation of deceased personnel to the nearest MA collection point. No amputated limbs from surgical operations will be accepted by the collection point personnel. The medical facility is responsible for disposing of amputations.

(8) Photographs or note-taking devices are prohibited.

**Figure A-1. Sample unit mortuary affairs SOP**

**c. Temporary interment.** The division commander's intent is to evacuate remains as soon as it is tactically possible. When this cannot be accomplished, refrigeration storage is the next option. Interment is the last available option, only authorized by the geographic combatant commander.

(1) Inter all remains in accordance with JP 4-06 and FM 10-64.

(2) Complete a DD Form 551 for each temporary interment and forward to corps ACoS, G4/JMAO.

(3) 10th MTN DIV units will not assist in mass burial of local civilian dead except when requested by the corps civil affairs and approved by the corps commander.

(4) Inventory all personal effects using DD Form 1076. The personal effects and one copy of the DD Form 1076 are placed in a watertight container, attached securely, and interred with the remains.

**d. Disposition of personal effects.**

(1) Effects found on the remains of any U.S. personnel will accompany the remains through the channel of evacuation to the collection point. All personal effects found around the remains will be placed in a separate personal effects bag and shipped to the same collection point as the remains. At each stage of the evacuation process, examine the personal effects for identification value. Turn over the effects to the personal effects depot for disposition after processing at the TMEP is completed.

(2) The person delivering and the person receiving the remains jointly inventory effects found on the remains and around the remains at the first MA collection point. Inventory the effects on DD Form 1076. Place the original and all remaining copies of DD Form 1076 with the personal effects in a personal effects bag, attach the bag securely to the right wrist of the remains, and evacuate the bag with the remains to the intermediate collection point or TMEP.

(3) At each point of transfer in the channel of evacuation of remains and effects, the person accepting and the person relinquishing custody of the remains and effects must verify the security tag on the transfer case and verify that it isn't broken. If security seal is broken, inventory personal effects to ensure that it matches the original DD Form 1076. If personal effects are missing, conduct an internal investigation, and if not resolved, contact the criminal investigation division (CID) for further investigations.

**Figure A-1. Sample unit mortuary affairs SOP**

## Appendix B

# Sample Operation Order Mortuary Affairs Appendix

The MA mission relies on successful integration and coordination of multiple agencies. This can only be accomplished through diligent and thorough planning. The purpose of this appendix is to provide planning guidance for the development of a mortuary affairs appendix to OPLANS and CONPLANS with or without TPFDDs and functional plans (FUNCPLANS).

### CHARACTERISTICS

B-1. MA plans and orders are the way that MA planners expect to support the commander's mission and intent. MA planners must fully integrate the MA concept of support into the plan at both the operational and tactical level. It is not enough merely to verbalize or write the concept of support; the MA planner must continually coordinate with affected units and agencies in order for the plan to be successful.

B-2. MA planners use existing facts and necessary assumptions in OPLANS to ensure mission success. It is essential that MA Planners continually strive to validate assumptions and eliminate any false facts or assumptions. For more on orders production, see FM 5-0 (*Army Planning and Orders Production*).

<p><b>CLASSIFICATION</b></p> <p><b>HQ EUCOM</b> <b>APO AE 09128</b> <b>28 February 1999</b></p> <p><b><u>APPENDIX 3 TO ANNEX D TO USCINCUER OPLAN 4999-99 ( )</u></b></p> <p><b>MORTUARY AFFAIRS ( )</b></p> <p>( ) <b>References:</b> DODD 1300.22, Joint Publication 4-06, Service regulations, support agreements, and other documents necessary for a complete understanding of this appendix.</p> <p>1. ( ) <b>Situation.</b> Identify any significant factors that may influence mortuary affairs (MA) activities in support of this OPLAN. Use the following subparagraphs to the extent necessary.</p> <p style="padding-left: 40px;">a. ( ) <b>Enemy.</b> Refer to Annex B, Intelligence (standard OPORD annex). Access the effect of enemy capabilities and probable courses of action (COAs) on MA activities.</p> <p style="padding-left: 40px;">b.( ) <b>Friendly.</b> Include any coalition military forces and U.S. civilian agencies that will support the assigned Forces in accomplishing MA activities.</p>
--

**Figure B-1. Sample operation order mortuary affairs appendix**

## 2. ( ) Execution.

**a. ( ) Concept of Operations.** State the general concept of MA support of the Forces assigned for implementation of the OPLAN and comment on MA facilities, interment, and evacuation policies existing at the onset of hostilities versus the time when additional forces and resources became available. Project when the theater interment and evacuation policy may change. Comment on mass fatality policies and the processing of CBRN contaminated remains.

**b. ( ) Task.** In separate numbered subparagraphs for each applicable component, identify specific responsibilities for MA activities. Indicate by component, responsibility for as many of the following as applicable:

(1) ( ) Mortuary affairs support of forces for each U.S. military Service.

(2) ( ) Surface and aerial evacuation of human remains (HR) and personal effects (PE).

(3) ( ) Establishment and operation of various MA facilities: mortuary affairs collection points (MACPs), theater mortuary evacuation point (TMEP), and PE depot. Indicate the command and support relationships for each facility.

(4) ( ) Establishment and operation of a MADCP.

(5) ( ) Establishment and operation of temporary interment sites.

(6) ( ) Activation and staffing of the Joint Mortuary Affairs Office (JMAO) and the establishment of sub area JMAOs as needed.

(7) ( ) Designate theater executive agent and Theater Mortuary Affairs Office (TMAO).

**c. ( ) Coordinating Instructions.** Include general instructions applicable to two or more components. Include, if applicable, items such as—

(1) ( ) Arrangements concerning MA support of U.S. forces under OPCON of other than U.S. command.

(2) ( ) Agreements with coalition nations, U.S. Government and nongovernmental agencies for MA support of allied forces and civilian personnel in areas where U.S. forces are operating.

(3) ( ) Advisory services to support allied or host nation MA activities.

(4) ( ) Approving authority for use of temporary interment.

(5) ( ) Providing J-1 information for joint fatality reporting. Establish JMAO reporting requirements.

(6) ( ) Special instructions for operations involving special operations forces.

(7) ( ) Armed Forces medical examiner support.

**Figure B-1. Sample operation order mortuary affairs appendix**

**d. ( ) Special Guidance.** Include guidance and policy, not discussed elsewhere, concerning the search, recovery, tentative identification, evacuation or temporary interment of U.S. military, coalition force, civilian, enemy or detainee dead under the jurisdiction of U.S. forces. Also discuss the recovery and handling of personal effects, assignments and duties of a summary court martial officer, and the distribution and retention of related reports and records. If applicable include the following:

(1) ( ) Uniform procedures for maintaining continuous accountability of HR and PE at all MA Activities.

(2) ( ) Evacuation of HR and PE intra-theater, between theater, and CONUS.

(3) ( ) Possible transfer of HR and PE of coalition or enemy personnel to representatives of the coalition or host country concerned.

(4) ( ) Identity of specific collection locations where non-U.S. fatalities will be evacuated, if applicable.

**3. ( ) Administration and Logistics.** Refer to Annex D, Logistics. Provide a concept for furnishing logistics and administrative support for the MA activities and, as appropriate, include guidance on the following:

a. ( ) Discuss equipment and resource requirements that may be filled by LOGCAP or host nation support.

b. ( ) Use of U.S. forces non-MA personnel, coalition forces, contractor or host nation civilians to augment MA facilities.

**4. ( ) Command, Control, Communications, and Computer Systems (C4).** Summarize special C4 systems and command procedures required to conduct MA. Refer to appropriate section of annex K (standard OORDER annex).

Figure B-1. Sample operation order mortuary affairs appendix

**This page intentionally left blank.**

## Appendix C

# Forms and Reports

When personnel search for, recover, and evacuate remains, forms and reports detailing the mission must be completed. This appendix provides the user with a detailed set of instructions for completing necessary forms and reports. All Department of Defense (DD) forms can be located via the internet at <http://www.dtic.mil/whs/directives/infomgt/forms/formsprogram.htm>. Department of the Army (DA) forms may also be located via the internet at <http://www.usapa.army.mil>.

### NECESSARY FORMS

C-1. Proper documentation with forms completed fully and accurately is required for the MA mission to be successful. The following is a list of forms that are necessary for the MA mission. Forms may be required that are not listed in this appendix; if that is the case, MA personnel will reference the proper document for accurate form completion.

- DD Form 565, *Statement of Recognition of Deceased*.
- DD Form 567, *Record of Search and Recovery*.
- DD Form 1074, *Questionnaire of Local Inhabitants*.
- DD Form 1075, *Convoy List of Remains of Deceased Personnel*.
- DD Form 1076, *Military Operations Record of Personal Effects of Deceased Personnel*.
- DD Form 1077, *Collection Point Register of Remains*.
- DD Form 1079, *Interment/Disinterment Register*.

C-2. Often MA personnel will be required to complete required shipping documentation. The following list contains some possible documents that may be required. However, additional or even different documentation may be required based upon local theater policy. As movement and hazardous material forms and procedures change periodically, contact your local movement control team (MCT) for more information.

- DD Form 836, *Dangerous Goods Shipping Paper/Declaration and Emergency Response Information for Hazardous Materials Transported by Government Vehicles/Containers or Vessels*.
- DD Form 1384, *Transportation Control and Movement Document*.
- DD Form 1387, *Military Shipping Label*.
- S-7511, *Shippers Declaration of Dangerous Goods* (Forms are provided in theater or may be purchased through IATA).

### DD FORM 565

C-3. The DD Form 565 as shown in figure C-1 is used for visual identification of a decedent by an individual who knew that person well and/or have knowledge of the decedent's distinguishing physical characteristics. Entries on this form must fall within guidelines. If any entry cannot be verified, the terms "UNKNOWN" or "UNK" will be used as applicable.

C-4. Due to the importance of preserving forensic evidence regarding the cause of death of Soldiers killed in action, MA personnel must not remove clothing and military equipment (such as individual protective

equipment) when looking for identifying marks. Additionally, the remains may not be washed to determine identifying marks because washing the remains may result in the loss of forensic evidence.

C-5. MA personnel at the first receiving MA facility ensure that DD Form 565 is prepared for each remains. Both the person making the visual recognition and a witness must sign the form. Additionally, MA personnel may want to interview people who were in the recovery area. Sometimes, no one recognizes the remains, but the interview still may provide help in providing tentative identification. The original and one copy of the form are evacuated with the remains. One copy is kept in the processing files of the MA facility.

**BLOCK 1. TENTATIVELY IDENTIFIED DECEDENT.**

- 1a Name of decedent (*Last, First, MI or Unidentified*).
- 1b Rank. Enter officer, warrant officer, enlisted grade, or civilian and alphanumeric grade (for example, O-3, WO-3, E-7, or GS-10), coalition, local national, or enemy/insurgent.
- 1c Social security number (SSN). The social security number or Service number of the decedent.
- 1d Organization. Enter the decedent's unit of assignment.
- 1e Service. Enter component: U.S. Air Force, U.S. Army, U.S. Navy, U.S. Coast Guard, U.S. Marine Corps, coalition, enemy/insurgent, or local national.

**BLOCK 2. I HAVE PERSONALLY VIEWED THE REMAINS TENTATIVELY IDENTIFIED ABOVE. RECOGNITION IS BASED ON THE FOLLOWING:**

- 2a Sex. Enter the sex of the remains (male/female).
- 2b Approximate age (years). Enter the approximate age of the decedent.
- 2c Approximate height (inches). Enter the approximate height of the decedent.
- 2d Race. Enter the race of the decedent if it can be determined: Caucasoid, Negroid, or Mongoloid.
- 2e Hair color. Enter the hair color of the decedent if it can be determined. If brown indicate light or dark as applicable.
- 2f Build/muscularity. Enter the build of the decedent: slender, medium, heavy, or obese.
- 2g Identifying marks. Fully describe by type and location all known scars, tattoos, birthmarks, amputations, and other body markings/criteria to support the tentative identification.
- 2h Remarks. Annotate any additional information.

**BLOCK 3. DETAILS OF VIEWING.**

- 3a Date. Enter the date of the viewing as YYYYMMDD.
- 3b Time. Enter the time of the viewing as HHMM
- 3c Place. Enter the location of the viewing. If possible include military grid coordinates for the location.

**BLOCK 4. PERSON MAKING VISUAL IDENTIFICATION.**

- 4a Name. Enter the name of the person making the visual identification (*Last, First, MI*).
- 4b Rank. Enter the grade of the person making the visual identification as officer, warrant officer, enlisted, or civilian and alphanumeric grade (for example O-3, WO-3, E-7, or GS-10).
- 4c SSN. Enter the social security number or Service number of the person conducting the visual identification.
- 4d Organization. Enter the unit or organization of the person conducting the visual identification.
- 4e Signature. The person conducting the visual identification must sign in this block after verifying that all information on the form is correct.
- 4f Date signed. Signer must enter the date signed in the following format: YYYYMMDD.



- 4g Relationship to the deceased. Enter the relationship the person conducting the visual identification had with the decedent (for example, commander, first sergeant, platoon sergeant/leader, friend, relative, and so forth).
- 4h Length of time you have known the deceased. Enter the time the visual identifier has known the decedent in months or years.

**BLOCK 5. WITNESS.**

- 5a Name. Enter the name of the person (*Last, First, MI*) who witnessed the identification. This person must certify that the individual identified in block 4 viewed the remains and the annotated items in block 2 are true to the best of his or her knowledge.
- 5b Rank. Enter the grade of the witness if applicable. Annotate officer, warrant officer, enlisted or civilian and alphanumeric grade (O-3, WO-3, E-7, or GS-10).
- 5c Title. Enter the witness's title or position.
- 5d Organization. Enter the unit or organization of the witness.
- 5e Signature. Once the witness signs the form, he or she attests that all the information entered in Blocks 1 through 4 are true to the best of his or her knowledge.
- 5f Date signed. Enter date the witness signs the form in YYYYMMDD format.

<b>STATEMENT OF RECOGNITION OF DECEASED</b>			
<b>PRIVACY ACT STATEMENT</b>			
<p><b>AUTHORITY:</b> 10 USC Sections 1481 through 1488, EO 9397, Nov. 1943 (SSN).</p> <p><b>PURPOSE AND USE:</b> This form is used to establish initial identification of deceased personnel.</p> <p><b>DISCLOSURE:</b> Personal information provided on this form is given on a voluntary basis. Failure to provide this information, however, may result in improper identification of the deceased person and person making visual identification.</p>			
<b>1. TENTATIVELY IDENTIFIED DECEDENT</b>			
a. NAME ( <i>Last, First, Middle Initial</i> ) ( <i>or Unidentified</i> )	b. RANK	c. SSN	
d. ORGANIZATION	e. SERVICE		
<b>2. I HAVE PERSONALLY VIEWED THE REMAINS TENTATIVELY IDENTIFIED ABOVE. RECOGNITION IS BASED ON THE FOLLOWING.</b>			
a. SEX	b. APPROXIMATE AGE ( <i>Years</i> )	c. APPROXIMATE HEIGHT	d. RACE
e. HAIR COLOR ( <i>If brown, indicate light or dark, as applicable</i> )		f. BUILD/MUSCULARITY ( <i>Slender, medium, heavy or obese</i> )	
g. IDENTIFYING MARKS ( <i>Fully describe by type and location ALL known scars, tattoos, birthmarks, amputations or other body markings to support the identification.</i> )			
h. REMARKS			
<b>3. DETAILS OF VIEWING</b>			
a. DATE ( <i>YYYYMMDD</i> )	b. TIME	c. PLACE	
<b>4. PERSON MAKING VISUAL IDENTIFICATION</b>			
a. NAME ( <i>Last, First, Middle Initial</i> )	b. RANK	c. SSN	
d. ORGANIZATION	e. SIGNATURE	f. DATE SIGNED ( <i>YYYYMMDD</i> )	
g. RELATIONSHIP TO DECEASED ( <i>CDR, ISG, Friend, Relative, etc.</i> )		h. LENGTH OF TIME YOU KNEW DECEASED ( <i>Number of months or years</i> )	
<b>5. WITNESS</b>			
I certify that the individual identified in Item 4 has viewed the remains in my presence, and that to the best of my knowledge and belief the above statements are true.			
a. NAME ( <i>Last, First, Middle Initial</i> )	b. RANK	c. TITLE	
d. ORGANIZATION	e. SIGNATURE	f. DATE SIGNED ( <i>YYYYMMDD</i> )	

Sample

Figure C-1. DD Form 565

**DD FORM 567**

C-6. Search and recovery team members or personnel at a receiving MA facility (MACP, TMEP, and so forth) prepare the DD Form 567 for each remains recovered during the search and recovery mission. Team members also prepare this form if no remains are found. This is done to provide information about the search. This form is used for field search cases in the area clearance phase of search and recovery. It is prepared in triplicate with the MA facility keeping one copy and the original and remaining copy forwarded with the remains.

C-7. The DD Form 567 (figure C-2) is used to establish initial identification of deceased personnel. Do not leave blocks in this form blank, fill unnecessary blocks with either "NONE" or "N/A" and if information is unknown enter either "UNKNOWN" or "UNK".

**BLOCK 1. DATE.**

**1** Date. The date the report was initiated as YYYYMMDD.

**BLOCK 2. DECEDENT.**

**2a** Name. The believed to be name of the decedent (*Last, First, MI or Unidentified*).

**2b** Rank. The grade of the decedent as officer, warrant officer, enlisted or civilian and alphanumeric grade (for example, O-3, WO-3, E-7, or GS-10).

**2c** Social security number. The social security number or Service number of the decedent.

**2d** Race. The race of the decedent if it can be determined: Caucasoid, Negroid, or Mongoloid.

**2e** Organization. The deceased's unit of assignment, organization, coalition, enemy, or local national.

**BLOCK 3. TYPE OF SEARCH.**

**3** Type of search. Enter whether it is an **initial** or **subsequent** search.

**BLOCK 4. DATE OF MISSION.**

**4** Date of mission. The date of the mission execution as YYYYMMDD.

**BLOCK 5. FIELD SEARCH NUMBER.**

**5** Field search number. If there is a field search number, the JMAO will provide it before the team conducts the search and recovery mission.

**BLOCK 6. SEARCH AND RECOVERY NUMBER.**

**6** Search and recovery number. The search and recovery number assigned to the mission (*Per JP 4-06*).

**BLOCK 7. EVACUATION NUMBER.**

**7** Evacuation number. The evacuation number assigned to the remains.

**BLOCK 8. DATE OF RECOVERY.**

**8** Date of recovery. The date the remains were recovered as YYYYMMDD.

**BLOCK 9. NATIONALITY.**

**9** Nationality. The country of citizenship and origin of the remains, if known.

**BLOCK 10. ESTIMATED TIME OF DEATH.**

**10** Estimated time of death. The estimated time of death as YYYYMMDD.

**BLOCK 11. PLACE OF RECOVERY.**

- 11** Place of recovery. Indicate map sheet number, grid coordinates, name of nearest village or town; name description or number of roads, mountains, or other landmarks; type of grave (shallow, deep, surface); type of position (artillery, infantry). If recovered from a vehicle, tank, or aircraft, give the position therein.

**BLOCK 12. IDENTIFICATION MEDIA FOUND IN GRAVE AND/OR SURROUNDING AREA.**

- 12** Identification media found in grave and/or surrounding area. Include serial numbers found on vehicles, tanks, aircraft, and weapons.

**BLOCK 13. OTHER REMAINS RECOVERED ON THIS MISSION.**

---

*Note.* All remains listed here must have an additional DD Form 567 listing them as the principle decedent. This block is for grouping remains into a single area or incident.

---

- 13a** Search and recovery number. Enter the search and recovery number assigned to the specific remains (for example 002/AR54/1 of 2). A search and recovery number consists of 3 parts:
- Search and recovery mission number.
  - Unit conducting search and recovery.
  - The number of this remains of the total number of remains found (for example, 1 of 2, 2 of 2, and so on.). If additional space is needed continue to Block 13b.
- 13b** A continuation of block 13a. Additional remains may be listed on the back of the form if necessary.

**BLOCK 14. RECOVERY TEAM MEMBERS.**

- 14a** Name. Enter each recovery team member's name (*Last, First, MI*).
- 14b** Rank. The grade of the recovery team member listed: officer, warrant officer, enlisted, or civilian and alphanumeric grade (for example, O-3, WO-3, E-7, or GS-10).
- 14c** Organization. The recovery team member's unit of assignment, organization, coalition, or local national.

**BLOCK 15. TEAM LEADER.**

- 15a** Name. The name of the recovery team leader (*Last, First, MI*).
- 15b** Rank. The grade of the recovery team leader as officer, warrant officer, enlisted, or civilian and alphanumeric grade (for example, O-3, WO-3, E-7, or GS-10).
- 15c** Organization. The recovery team leader's unit of assignment, organization, coalition, or local national.
- 15d** Signature. Team leader signs the form here after verifying the accuracy of the information.
- 15e** Date signed. Date team leader signed the form as YYYYMMDD.

**BLOCK 16. RECEIVING OFFICIAL.**

- 16a** Name. The name of the receiving official (*Last, First, MI*).
- 16b** Rank. The grade of the receiving official as officer, warrant officer, enlisted, or civilian and alphanumeric grade (for example, O-3, WO-3, E-7, or GS-10).
- 16c** Organization. The receiving official's unit of assignment, organization, coalition, or local national.
- 16d** Signature. The receiving official signs the form here after verifying the accuracy of the information.
- 16e** Date signed. Date receiving official signed the form as YYYYMMDD

RECORD OF SEARCH AND RECOVERY				1. DATE (YYYYMMDD)
<b>PRIVACY ACT STATEMENT</b>				
AUTHORITY: 10 USC Sections 1481 through 1488, EO 9397, Nov. 1943 (SSN).				
PURPOSE AND USE: This form is used to establish initial identification of deceased personnel.				
DISCLOSURE: Personal information provided on this form is given on a voluntary basis. Failure to provide this information, however, may result in improper identification of the deceased person and person making visual identification.				
<b>2. DECEDENT</b>				
a. NAME (Last, First, Middle Initial) (or Unidentified)	b. RANK	c. SSN	d. RACE	e. ORGANIZATION
<b>3. TYPE OF SEARCH</b>	<b>4. DATE OF MISSION</b> (YYYYMMDD)	<b>5. FIELD SEARCH NUMBER</b>		<b>6. SEARCH AND RECOVERY NUMBER</b>
<b>7. EVACUATION NUMBER</b>	<b>8. DATE OF RECOVERY</b> (YYYYMMDD)	<b>9. NATIONALITY</b>	<b>10. ESTIMATED DATE OF DEATH</b> (YYYYMMDD)	
<b>11. PLACE OF RECOVERY</b> (Indicate map sheet number, grid coordinates, name of nearest village or town, name, description, or number of roads, mountains or other landmarks; type of grave (shallow, deep, surface); type of position (artillery, infantry). If recovered from a vehicle, tank or plane, give position therein.)				
<b>12. IDENTIFICATION MEDIA FOUND IN GRAVE AND/OR SURROUNDING AREA</b> (Include serial numbers found on vehicles, tanks, aircraft and weapons.)				
<b>13. OTHER REMAINS RECOVERED ON THIS MISSION</b> (Use continuation sheet if necessary.)		<b>14. RECOVERY TEAM MEMBERS</b>		
SEARCH AND RECOVERY NO. a.	SEARCH AND RECOVERY NO. b.	NAME (Last, First, Middle Initial) a.	RANK b.	ORGANIZATION c.
<b>15. TEAM LEADER</b>				
a. NAME (Last, First, Middle Initial)	b. RANK	c. ORGANIZATION		
d. SIGNATURE				e. DATE SIGNED (YYYYMMDD)
<b>16. RECEIVING OFFICIAL</b>				
a. NAME (Last, First, Middle Initial)	b. RANK	c. ORGANIZATION		
d. SIGNATURE				e. DATE SIGNED (YYYYMMDD)

DD FORM 567, JUL 1998 (EG)

PREVIOUS EDITION MAY BE USED.

Recat

Designed using Perform Pro, WHS/DIOR, Jun 98

Figure C-2. DD Form 567

**DD FORM 1074**

C-8. The DD Form 1074 as shown in figure C-3 is used anytime citizens of a search area are questioned about deceased or missing personnel. All entries on this form must be completed; if any entry cannot be verified, the term “UNKNOWN” or “UNK” will be used. Additionally, if a question in any block does not apply, “N/A” will be placed within that block.

C-9. MA personnel at the first receiving MA facility ensure that a DD Form 1074 is prepared for each interviewed person. The original and one copy of the form are evacuated with the remains. One copy is kept in the processing MA facility’s file.

**BLOCK 1. PERSON INTERVIEWED.**

- 1a** Name. The name of the person interviewed (*Last, First, MI or Unidentified*).
- 1b** Address. The address of the person interviewed.
- 1c** Occupation. The occupation of the person interviewed.
- 1d** Date interviewed. The date the person was interviewed.

**BLOCK 2. ARE THERE BELIEVED TO BE U.S. FORCES INTERRED IN THIS AREA?**

- 2a** Check the answer given by the person interviewed: Yes or No. If “yes,” finish block 2 otherwise skip to block 3.
- 2b** Who interred the remains? Place the response in this block.
- 2c** Date of death. The date the person interviewed believes the Service member died in the YYYYMMDD format.
- 2d** Date of interment. The date the person interviewed believes the remains were interred in the YYYYMMDD format.
- 2e** Where were the remains interred? The location where remains of U.S. Forces were interred, ensure to include grid coordinates.

**BLOCK 3. ARE THE REMAINS BELIEVED TO BE U.S. FORCES ABOVE GROUND IN THIS AREA?**

- 3a** Check the answer given by the person interviewed: Yes or No. If “yes”, finish block 3, otherwise skip to block 4.
- 3b** Who found the remains? Enter the name of the person the interviewer believes to have found the remains.
- 3c** Where are the remains now? Enter the location where the person interviewed believes the remains to be located to include grid coordinates.
- 3d** Date of death. The date of death given by the person being interviewed in the YYYYMMDD format.

**BLOCK 4. WAS THE PERSON WHO FOUND THE REMAINS A WITNESS TO THE DEATH?**

- 4** Enter an “X” in the appropriate box.

**BLOCK 5. WERE REMAINS RECOVERED FROM AN AIRCRAFT OR ARMORED VEHICLE?**

- 5** Enter an “X” in the appropriate box. If “yes”, then describe type, marking, and crew position in the space provided.

**BLOCK 6. IS THE AREA WHERE REMAINS ARE LOCATED MINED AND/OR BOOBY TRAPPED?**

- 6** Enter an “X” in the appropriate box. If “yes”, then describe in block 12.

**BLOCK 7. WERE THE REMAINS TENTATIVELY IDENTIFIED PRIOR TO BURIAL?**

- 7a** Enter an “X” in the appropriate box. If “yes”, complete block 7b, otherwise continue to block 8.
- 7b(1)** Person who tentatively identified the remains. The name of the person who tentatively identified the decedent (*Last, First, MI*).

**7b(2)** Title. The professional title of the person who provided the tentative identification.

**7b(3)** Address. The street address of the person who provided the tentative identification.

**BLOCK 8. WERE PERSONAL EFFECTS RECOVERED WITH THE REMAINS?**

**8a** Enter an "X" in the appropriate box. If "yes", complete block 8b and describe in block 12, otherwise continue to block 9.

**8b** Where are the Effects Now? The location where the person interviewed believes the personal effects are now. Describe in block 12.

**BLOCK 9. WAS GOVERNMENT PROPERTY FOUND AND/OR RECOVERED WITH REMAINS?**

**9a** Enter an "X" in the appropriate box. If "yes", complete block 9b and describe in block 12, otherwise continue on to block 10.

**9b** Where is Property Now? The location where the person interviewed believes the personal effects are now. Describe in block 12.

**BLOCK 10. WERE U.S. FORCES PERSONNEL GIVEN MEDICAL TREATMENT PRIOR TO DEATH?**

**10a** Enter an "X" in the appropriate box. If "yes", complete blocks 10b-10d, otherwise continue to block 11.

**10b** Who provided medical aid? Enter who the person interviewed witness providing the medical aid.

**10c** Name of Medical Facility. Enter the name of the medical facility where the witness saw the decedent treated.

**10d** Location of the Medical Facility. Enter the location, to include grid coordinates, of the medical facility that treated the decedent.

**BLOCK 11. WERE U.S. FORCES PERSONNEL MISTREATED PRIOR TO OR AFTER DEATH?**

**11a** Enter an "X" in the appropriate box. If "yes", complete blocks 11b and 11c describing events in block 12, otherwise continue on to block 12.

**11b** Who mistreated the personnel? Enter who the witness saw mistreating the decedent.

**11c(1)** Witness to mistreatment. The name of who actually witnessed the mistreatment (*Last, First, MI*).

**11c(2)** Address. Address of the person who actually witnessed the mistreatment.

**BLOCK 12. ADDITIONAL INFORMATION.**

**12** Enter any additional information that was not covered in blocks 1-11 here. You may use a continuation sheet if required.

**BLOCK 13. PREPARING OFFICIAL.**

**13a** Name. The name of the preparing official (*Last, First, MI*).

**13b** Rank. The grade of the preparing official as officer, warrant officer, enlisted or civilian and alphanumeric grade (for example, O-3, WO-3, E-7, or GS-10).

**13c** Organization. The preparing official's unit of assignment or organization.

**13d** Signature. The signature of the preparing official.

**13e** Date signed. Date the preparing official signed the document, entered as YYYYMMDD.

QUESTIONNAIRE OF LOCAL INHABITANTS				
<b>PRIVACY ACT STATEMENT</b>				
AUTHORITY: 10 USC Sections 1481 through 1488, EO 9397, Nov. 1943 (SSN).				
PURPOSE AND USE: This form is used to establish initial identification of deceased personnel.				
DISCLOSURE: Personal information provided on this form is given on a voluntary basis. Failure to provide this information, however, may result in improper identification of the deceased person and person making visual identification.				
1. PERSON INTERVIEWED a. NAME (Last, First, Middle Initial)		b. ADDRESS		
c. OCCUPATION		d. DATE INTERVIEWED (YYYYMMDD)		
2a. ARE THERE REMAINS BELIEVED TO BE U.S. FORCES INTERRED IN THIS AREA? (If Yes, complete 2b., c., d., and e.)		YES		b. WHO INTERRED THE REMAINS?
		NO		
c. DATE OF DEATH (YYYYMMDD)	d. DATE OF INTERMENT (YYYYMMDD)	e. WHERE WERE THE REMAINS INTERRED? (Include grid coordinates)		
3a. ARE THERE REMAINS BELIEVED TO BE U.S. FORCES ABOVE GROUND IN THIS AREA? (If Yes, complete 3b., c., and d.)		YES		b. WHO FOUND THE REMAINS?
		NO		
c. WHERE ARE THE REMAINS NOW? (Include grid coordinates)				d. DATE OF DEATH (YYYYMMDD)
4. WAS THE PERSON WHO FOUND THE REMAINS A WITNESS TO THE DEATH?		YES		5. WERE REMAINS RECOVERED FROM AN AIRCRAFT OR ARMORED VEHICLE? (If Yes, describe type, marking, and crew position.)
		NO		
6. IS THE AREA WHERE REMAINS ARE LOCATED MINED AND/OR BOOBYTRAPPED? (If Yes, describe in Item 12.)		YES		YES
		NO		
7a. WERE THE REMAINS TENTATIVELY IDENTIFIED PRIOR TO BURIAL? (If Yes, complete 7b.)		YES		NO
		NO		
b. PERSON WHO TENTATIVELY IDENTIFIED THE REMAINS: (1) NAME (Last, First, Middle Initial)		(2) TITLE	(3) ADDRESS	
8a. WERE PERSONAL EFFECTS RECOVERED WITH REMAINS? (If Yes, complete 8b. and describe in Item 12.)		YES		b. WHERE ARE EFFECTS NOW?
		NO		
9a. WAS GOVERNMENT PROPERTY FOUND AND/OR RECOVERED WITH REMAINS? (If Yes, complete 9b. and describe in Item 12.)		YES		b. WHERE IS PROPERTY NOW?
		NO		
10a. WERE U.S. FORCES PERSONNEL GIVEN MEDICAL TREATMENT PRIOR TO DEATH? (If Yes, complete 10b., c., and d.)		YES		b. WHO PROVIDED MEDICAL AID?
		NO		
c. NAME OF MEDICAL FACILITY		d. LOCATION OF MEDICAL FACILITY		
11a. WERE U.S. FORCES PERSONNEL MISTREATED PRIOR TO OR AFTER DEATH? (If Yes, complete 11b. and c. and explain in Item 12.)		YES		b. WHO MISTREATED THE PERSONNEL?
		NO		
c. WITNESS TO MISTREATMENT (1) NAME (Last, First, Middle Initial)		(2) ADDRESS		
12. ADDITIONAL INFORMATION (Use continuation sheet if necessary)				
13. PREPARING OFFICIAL a. NAME (Last, First, Middle Initial)		b. RANK	c. ORGANIZATION	d. SIGNATURE
				e. DATE SIGNED (YYYYMMDD)

DD FORM 1074, JUL 1998 (EG)

PREVIOUS EDITION MAY BE USED.

Reset

Designed using Perform Pro, WHS/DIOR, Jun 98

Figure C-3. DD Form 1074



**DD FORM 1075**

C-10. The DD Form 1075 as shown in figure C-4 is completed by MA Personnel at a MA facility (MACP, TMEP, and so forth). All remains evacuated within an individual convoy or lift is listed on this form. The convoy commander or crew chief will sign for the remains and begin the evacuation. If any entry on this form cannot be verified, use the terms "UNKNOWN" or "UNK" as applicable.

C-11. MA personnel at the MA facility initiating the evacuation will ensure that a DD Form 1075 is prepared listing each remains to be evacuated within a single serial. The original copy of the form is evacuated with the remains. One copy is kept in the processing MA facility's file.

**BLOCK 1. FROM.**

- 1 From. The designation of the MA Facility or unit initiating the shipment of remains.

**BLOCK 2. TO.**

- 2 To. The destination of the remains.

**BLOCK 3. DATE PREPARED.**

- 3 Date Prepared. Enter the date the form was prepared as YYYYMMDD.

**BLOCK 4. PAGE.**

- 4 Page. Enter the individual page number in relation to the series of page numbers (1 of 2, 3 of 4, and so forth).

**BLOCK 5. VEHICLE/AIRCRAFT ID NUMBER.**

- 5 Vehicle/Aircraft ID Number. Enter bumper numbers, tail numbers and any other information identifying mode of transportation.

**BLOCK 6. EVACUATION NUMBER.**

- 6 Evacuation Number. Enter the evacuation number assigned during processing (*Per JP 4-06*).

**BLOCK 7. TENTATIVELY IDENTIFIED DECEDENT.**

- 7a Name. Enter the name of the decedent believed-to-be (*[BTB]: Last, First, MI; or UNKNOWN*).
- 7b Grade. The grade of the decedent entered as officer, warrant officer, enlisted or civilian and alphanumeric grade (for example, O-3, WO-3, E-7, or GS-10).
- 7c SSN. The Social Security or Serial Number of the decedent, if known.
- 7d Organization. The decedent's unit of assignment or organization, if known.

**BLOCK 8. AIRCRAFT/VEHICLE DEPARTED.**

- 8a Time. The time the convoy/aircraft departed the shipping unit entered as HHMM.
- 8b Date. The date the convoy/aircraft departed the shipping unit entered as YYYYMMDD.

**BLOCK 9. AIRCRAFT/VEHICLE COMMANDER.**

- 9a Name. The name of the aircraft or vehicle commander (*Last, First, MI*).
- 9b Grade. The grade of the aircraft or vehicle commander entered as officer, warrant officer, enlisted or civilian and alphanumeric grade (for example, O-3, WO-3, E-7, or GS-10).
- 9c Organization. The assigned unit or organization of the aircraft or vehicle commander.
- 9d Signature. Signature of the aircraft or vehicle commander.
- 9e Date signed. Date aircraft or vehicle commander signed the form entered as YYYYDDMM.

**BLOCK 10. AIRCRAFT/VEHICLE ARRIVED.**

- 10a Time. The time the vehicle arrived to the receiving MA facility entered as HHMM.

- 10b** Date. The date the vehicle arrived to the receiving MA facility entered as YYYYMMDD.

**BLOCK 11. RECEIVING OFFICIAL.**

- 11a** Name. The name of the receiving official (*Last, First, MI*).
- 11b** Grade. The grade of the receiving official entered as officer, warrant officer, enlisted or civilian and alphanumeric grade (for example, O-3, WO-3, E-7, or GS-10).
- 11c** Organization. The assigned unit or organization of the receiving official.
- 11d** Signature. Signature of the receiving official.
- 11e** Date signed. Date the receiving official signed the form entered as YYYYMMDD.

**BLOCK 12. ADDITIONAL INFORMATION.**

- 12** Enter any additional information that was not covered in blocks 1-11 here. You may use a continuation sheet if required.

CONVOY LIST OF REMAINS OF DECEASED PERSONNEL				
<b>PRIVACY ACT STATEMENT</b> AUTHORITY: 10 USC Sections 1481 through 1488, EO 9397, Nov. 1943 (SSN). PURPOSE AND USE: This form is used to establish initial identification of deceased personnel. DISCLOSURE: Personal information provided on this form is given on a voluntary basis. Failure to provide this information, however, may result in improper identification of the deceased person and person making visual identification.				
1. FROM	2. TO	3. DATE PREPARED <i>(YYYYMMDD)</i>	4. PAGE  OF PAGES	
5. VEHICLE/AIRCRAFT ID NUMBER	6. EVACUATION NUMBER	7. TENTATIVELY IDENTIFIED DECEDENT <i>(If unidentified, so state)</i>		
		a. NAME <i>(Last, First, Middle Initial)</i>	b. GRADE	c. SSN
8. AIRCRAFT/VEHICLE DEPARTED	9. AIRCRAFT/VEHICLE COMMANDER			
a. TIME	a. NAME <i>(Last, First, Middle Initial)</i>	b. GRADE	c. ORGANIZATION	
b. DATE <i>(YYYYMMDD)</i>	d. SIGNATURE		e. DATE SIGNED <i>(YYYYMMDD)</i>	
10. AIRCRAFT/VEHICLE ARRIVED	11. RECEIVING OFFICIAL			
a. TIME	a. NAME <i>(Last, First, Middle Initial)</i>	b. GRADE	c. ORGANIZATION	
b. DATE <i>(YYYYMMDD)</i>	d. SIGNATURE		e. DATE SIGNED <i>(YYYYMMDD)</i>	

DD FORM 1075, JUL 1998 (EG)

PREVIOUS EDITION MAY BE USED.

Recept
 Designed using Perform Pro, WHS/DIOR, Jun 98

Figure C-4. DD Form 1075

C-12. The DD Form 1076 (*Military Operations Record of Personal Effects of Deceased Personnel*) as shown in figure C-5 may be completed by the losing unit, treating medical facility or MA personnel. This form is used in all TOs, but not in the CONUS. All PE received with or belonging to the remains are listed on the form. If no effects are with the remains, this is noted on the form and, if known, the reason there are no effects is stated. If any entry on this form cannot be verified, use the terms “UNKNOWN” or “UNK” as applicable.

C-13. PE is divided into two categories; associated and unassociated. Associated PE is inventoried by MA personnel at the receiving MA facility. Due to the importance of preserving forensic evidence regarding the cause of death of Service members killed in action, MA personnel must not remove clothing and/or military equipment (such as individual protective equipment) when inventorying PE. All PE must be inventoried and evacuated on the remains. The DD Form 1076 is completed in triplicate when inventorying associated PE. The original is placed in the PE Bag with the PE, which the unit safeguards until the PE is evacuated with the remains. The PE must be re-inventoried and signed for at each stop in the evacuation process.

C-14. Unassociated PE is all PE belonging to the decedent that is not associated with the remains. This is the losing unit’s responsibility to inventory and evacuate to the theater PE depot (see chapter 5). The original copy of the unit’s inventory is forwarded with the PE. The unit keeps one copy for their unit files.

**BLOCK 1. DATE.**

- 1 Date. The date the form was initiated entered as YYYYMMDD.

**BLOCK 2. PAGE.**

- 2 Page. Enter the individual page number in relation to the series of page numbers (1 of 2, 3 of 4, and so forth).

**BLOCK 3. TENTATIVELY IDENTIFIED DECEDENT.**

- 3a Name. The name of the decedent entered as or BTB: Last, First, MI or UNKNOWN.
- 3b Grade. Grade of the decedent entered as officer, warrant officer, enlisted grade, or civilian and alphanumeric grade.
- 3c SSN. Social security number or Service number of the decedent.
- 3d Organization. Enter the decedent’s unit of assignment.
- 3e Status. Enter accountability status (i.e. KIA, MIA, WIA)
- 3f Date of status. Enter the date of status as YYYYMMDD.

**BLOCK 4. PLACE OF RECOVERY.**

- 4 Place of recovery. List the closes town or village; include map name and grid coordinates of PE recovery.

**BLOCK 5. DATE OF RECOVERY.**

- 5 Date of recovery. Date the PE was recovered entered as YYYYMMDD.

**BLOCK 6. EVACUATION NUMBERS.**

- 6 Evacuation numbers. Enter the evacuation numbers assigned during PE processing (*Per JP 4-06*).

**BLOCK 7. INVENTORY OF EFFECTS.**

- 7a Quantity. Give the exact amount of each item inventoried (each [EA], set [ST], pair [PR], and so forth).
- 7b Description. Write a brief and complete description of each item (examples: cigarette lighter, inscribed ZIPPO, silver-tone in color, initials “WCC” inscribed on front or watch, yellow in color with black band, inscribed “Timex” and serial # 000154”). Never specify metal or jewel type; only list the color or tone, as several types of metal and jewelry look similar.

- 7c** Received. Enter a check mark “✓” or an “X” and the initials of the person receiving the property. If the item was not received, a line is drawn through the description, and the person delivering **and** the person receiving initial the correction.
- 7d** Condition. Enter one of the follow conditions: excellent, good, or poor.
- Excellent—visually outstanding.
  - Good—visually operable or working, no rips, no tears, nothing visually broken, not burned, and so forth.
  - Poor—not visually operable or working, rips, tears, broken, burned, and so on.
- 7e** Disposition. Enter one of the following dispositions: turned-in, destroyed, Service member, PERE, shipped with remains, hand-carried, or summary court officer (SCO)/SCMO.
- Turn-in—item turned-in to military inventory.
  - Destroyed—only used on the initial DD Form 1076 for items prescribed in AR 638-2.
  - Service-member—item returned/given to the Service member.
  - PERE—item given to PERE or actual place of disposition (for example, Federal Bureau of Investigation [FBI], museum, and so forth).
  - Shipped with remains—item shipped at the request of the PADD/PERE.
  - Hand-carried—item hand-carried by an escort.
  - SCO/SCMO—item turned over to the SCO or SCMO for screening.

---

**BLOCK 8. FUNDS/NEGOTIABLE INSTRUMENTS/OTHER HIGH VALUE ITEMS TRANSMITTED WITH EFFECTS.**

---

*Note.* Items such as cash, credit cards, or other obvious high-valued items will be entered here. These items will NOT be included in block 7.

---

- 8a** Quantity. Enter the exact amount of each item inventoried.
- 8b** Description. Enter a brief, detailed description of each item. (examples: two one-dollar bills, U.S. currency, serial numbers D73083702H, E78839847I or one ring, yellow in color with clear stone, initials “DJH” inscribed on inside of band.)
- 8c** Received. Enter a check mark “✓” or an “X” and the initials of the person receiving the property. If the item was not received, a line is drawn through the description, and the person delivering **and** the person receiving initial this block.
- 8d** Condition. Enter one of the follow conditions: excellent, good, or poor.
- Excellent—visually outstanding.
  - Good—visually operable or working, no rips, no tears, nothing visually broken, not burned, etcetera.
  - Poor—not visually operable or working, rips, tears, broken, burned, etcetera.
- 8e** Disposition. Enter one of the following dispositions: turned-in, destroyed, Service member, PERE, shipped with remains, hand-carried, or SCMO.
- Turned-in—item turned-in to military inventory.
  - Destroyed—only used on the initial DD Form 1076 for items prescribed in AR 638-2.
  - Service-member—item returned/given to the Service member.
  - PERE—item given to PERE or actual place of disposition (for example, the FBI, museum, etcetera).

- Shipped with remains—item shipped at the request of the PADD/PERE.
- Hand-carried—item hand-carried by an escort.
- SCMO—item turned over to the SCMO for screening.

**BLOCK 9. EFFECTS INVENTORIED ABOVE REPRESENT.**

- 9 Place an “X” in the appropriate block.

**BLOCK 10. PREPARING OFFICIAL.**

- 10a** Name. The name (*Last, First, MI*) of the preparing official to include position title, such as., MACP, TMEP, mortuary, and so forth.
- 10b** Grade. The grade of the preparing official entered as officer, warrant officer, enlisted or civilian and alphanumeric grade (for example, O-3, WO-3, E-7, or GS-10).
- 10c** Organization. The assigned unit or organization of the preparing official.
- 10d** Signature. Signature of the preparing official.
- 10e** Date signed. Date preparing official signed the form as YYYYMMDD.

**BLOCK 11. RECEIVING OFFICIAL.**

- 11a** Name. The name (*Last, First, MI*) of the receiving official to include position title, such as SCMO, summary court officer (SCO), CAO, MACP, TMEP, mortuary, Joint Personal Effects Depot (JPED), and so forth.
- 11b** Grade. The grade of the receiving official entered as officer, warrant officer, enlisted or civilian and alphanumeric grade (for example, O-3, WO-3, E-7, or GS-10).
- 11c** Organization. The assigned unit or organization of the receiving official.
- 11d** Signature. Signature of the receiving official.
- 11e** Date signed. Date the receiving official signed the form entered as YYYYMMDD.

**BLOCK 12. RECEIVING OFFICIAL.**

- 12a** Name. The name (*Last, First, MI*) of the receiving official (include position title, such as SCMO, SCO, CAO, MACP, TMEP, mortuary, JPED, and so forth).
- 12b** Grade. The grade of the receiving official entered as officer, warrant officer, enlisted or civilian and alphanumeric grade (for example, O-3, WO-3, E-7, or GS-10).
- 12c** Organization. The assigned unit or organization of the receiving official.
- 12d** Signature. Signature of the receiving official.
- 12e** Date signed. Date the receiving official signed the form entered as YYYYMMDD.

<b>RECORD OF PERSONAL PROPERTY/PERSONAL EFFECTS</b>				<b>1. DATE</b> (YYYYMMDD)	<b>2. PAGE</b>  <b>OF PAGES</b>
<b>PRIVACY ACT STATEMENT</b>					
<p><b>AUTHORITY:</b> 10 USC Sections 1481 through 1488, EO 9397, Nov. 1943 (SSN).</p> <p><b>PURPOSE AND USE:</b> This form is used to establish association of personal property/personal effects.</p> <p><b>DISCLOSURE:</b> Personal information provided on this form is given on a voluntary basis. Failure to provide this information, however, may result in improper identification of the personal effects/personal belongings.</p>					
<b>3. PERSONAL PROPERTY/PERSONAL EFFECTS BELIEVED TO BE OF:</b>					
a. NAME (Last, First, Middle Initial) (or Unidentified)	b. GRADE	c. SSN	d. ORGANIZATION	e. STATUS	f. DATE OF STATUS (YYYYMMDD)
<b>4. PLACE OF RECOVERY</b> (include grid coordinates)			<b>5. DATE OF RECOVERY</b> (YYYYMMDD)	<b>6. EVACUATION NUMBER</b>	
<b>7. INVENTORY OF PERSONAL PROPERTY/PERSONAL EFFECTS</b> <span style="float: right;">Use DD Form 1076C for additional entries.</span>					
a. QUANTITY	b. DESCRIPTION	c. RECEIVED	d. CONDITION	e. DISPOSITION	
<b>8. FUNDS/NEGOTIABLE INSTRUMENTS/OTHER HIGH VALUE ITEMS TRANSMITTED WITH EFFECTS</b> <span style="float: right;">Use DD Form 1076C for additional entries.</span>					
a. QUANTITY	b. DESCRIPTION	c. RECEIVED	d. CONDITION	e. DISPOSITION	
<b>9. PREPARING OFFICIAL</b>					
I certify that the accuracy and propriety of the above inventory is in accordance with the current DoD directives governing it.					
a. NAME (Last, First, Middle Initial)		b. GRADE	c. ORGANIZATION		
d. SIGNATURE			e. POSITION	f. DATE SIGNED (YYYYMMDD)	
<b>10. RECEIVING OFFICIALS</b>					
I certify that the above listing comprises all the personal property and/or personal effects located in this area. I also certify that all my other responsibilities under current DoD regulations and applicable directives have been read and understood.					
a. NAME (Last, First, Middle Initial)		b. GRADE	c. ORGANIZATION		
d. SIGNATURE			e. POSITION	f. DATE SIGNED (YYYYMMDD)	
a. NAME (Last, First, Middle Initial)		b. GRADE	c. ORGANIZATION		
d. SIGNATURE			e. POSITION	f. DATE SIGNED (YYYYMMDD)	
a. NAME (Last, First, Middle Initial)		b. GRADE	c. ORGANIZATION		
d. SIGNATURE			e. POSITION	f. DATE SIGNED (YYYYMMDD)	
<b>11. PERSON ELIGIBLE TO RECEIVE EFFECTS (PERE)</b> <span style="float: right;">PERE determination is the responsibility of an appointed Summary Court Martial Officer.</span>					
I understand that delivery of the personal property and/or personal effects to me does not in itself vest title for this property or effects in me. Further, I accept this property/effects contingent upon possible disposition to others in accordance with applicable state laws.					
a. NAME (Last, First, Middle Initial)		b. SIGNATURE	c. Were Personal Effects Invented before Receipt? (X as appropriate)		d. DATE SIGNED (YYYYMMDD)
			<input type="checkbox"/> YES <input type="checkbox"/> NO		

DD FORM 1076, AUG 2005

PREVIOUS EDITIONS ARE OBSOLETE

Figure C-5. DD Form 1076

**DD FORM 1077**

C-15. The DD Form 1077 shown in figure C-6 must be completed by personnel at a MA facility. A new form must be initiated for each 24-hour period running from 0001 through 2400. MA Facilities may use as many forms per day as required. Originals of the DD Form 1077 are filed at the MA facility until the facility is closed, at which time disposition instructions per AR 25-400-2 (*The Army Records Information Management System (ARIMS)*) are applied.

C-16. After completing all the data for remains on the form, a horizontal line will be drawn under those data entries. This line provides the senior personnel from the delivering unit a place to sign verifying the delivery of remains and the accuracy of data entered. This person should sign above the line drawn for each entry. After the last remains of the 24-hour period is received, a horizontal line will also be drawn under that entry and underneath that line, enter the words “nothing follows.” If no remains are received during the 24-hour period, “no remains received” is entered across the face of the form. If remains are received and any entry on this form cannot be verified, use the terms “UNKNOWN” or “UNK” as applicable.

C-17. DD Form 1077 will not be filed until all remains listed are evacuated. The MA facility NCOIC/OIC will place the date in the lower right corner when all remains listed are evacuated. This will close-out the form allowing it to be filed.

**BLOCK 1. DATE OF REPORT.**

- 1 Date of report. The date the form was initiated entered as YYYYMMDD. I

**BLOCK 2. PAGE.**

- 2 Page. Enter the individual page number in relation to the series of page numbers (1 of 2, 3 of 4, and so on).

**BLOCK 3. COLLECTION POINT NAME.**

- 3 Collection point name. Enter the collection point name or number.

**BLOCK 4. COLLECTION POINT LOCATION.**

- 4 Collection point location. Enter the location using grid coordinates with map reference number.

**BLOCK 5. ORGANIZATION OPERATING COLLECTION POINT.**

- 5 Organization operating collection point. Enter the parent unit of the MA facility and the unit to which that facility is attached, if applicable (for example, 54<sup>th</sup> QM Company/115<sup>th</sup> FSB, 1CD).

**BLOCK 6. EVACUATION NUMBER.**

- 6 Evacuation number. Enter the evacuation number assigned to the remains upon receipt (*Per JP 4-06*).

**BLOCK 7. INFORMATION ON DECEASED.**

- 7a Name. The name of the decedent, if known (*BTB: Last, First, MI or Unidentified*). If remains are unidentified do not enter unknown, enter “Unidentified”.
- 7b Rank. The grade of the decedent entered as officer, warrant officer, enlisted or civilian and alphanumeric grade (for example, O-3, WO-3, E-7, or GS-10).
- 7c SSN. The social security number or serial number of the decedent, if known.
- 7d Organization. The assigned unit or organization of the decedent, if known.



**BLOCK 8. SEARCH AND RECOVERY NUMBER.**

- 8 Search and recovery number. The search and recovery number assigned to the remains by the search and recovery team. This number is transferred from the DD Form 567.

**BLOCK 9. NAME OF PERSON AND/OR UNIT RECOVERING REMAINS.**

- 9 Name of person and/or unit recovering remains. The unit and NCOIC/OIC of the search and recovery team obtained from the DD Form 567. If a DD Form 567 is unavailable, enter the name and unit of those who delivered the remains to the MA facility.

**BLOCK 10. PLACE OF RECOVERY.**

- 10 Place of recovery. The location from which the remains were recovered including grid coordinates and map reference from the DD Form 567. If a DD Form 567 is unavailable, attempt to retrieve this information from those delivering the remains to the MA facility.

**BLOCK 11. DATE RECOVERED.**

- 11 Date recovered. The date the remains were recovered as obtained from DD Form 567. If a DD Form 567 is unavailable, retrieve this information from those delivering the remains to the MA facility.

**BLOCK 12. UNIT RECEIVED FROM.**

- 12 Unit received from. The unit actually delivering the remains to the MA facility. MA personnel must ensure that the senior person delivering remains signs DD Form 1077 for each remains delivered. This is to verify delivery of remains and accuracy of data entered.

**BLOCK 13. REMAINS EVACUATION TO.**

- 13 Remains evacuated to. The unit to which the remains were shipped. Only place an entry in this block when the remains are actually evacuated.

COLLECTION POINT REGISTER OF DECEASED PERSONNEL		1. DATE OF REPORT		2. PAGE OF PAGES				
3. COLLECTION POINT NAME		4. COLLECTION POINT LOCATION (includes grid coordinates)				5. ORGANIZATION OPERATING COLLECTION POINT		
6. EVACUATION NUMBER	7. INFORMATION ON DECEASED		8. SEARCH AND RECOVERY NUMBER	9. NAME OF PERSON AND/OR UNIT RECOVERING REMAINS	10. PLACE OF RECOVERY (include grid coordinates)	11. DATE RECOVERED	12. UNIT RECEIVED FROM	13. REMAINS EVACUATED TO
	a. NAME (Last, First, Middle Initial) (if unidentified, so state)	b. RANK						

DD Form 1077, JUL 84

Previous editions are obsolete.

Figure C-6. DD Form 1077

**DD FORM 1079**

5-26. The DD Form 1079 as shown in figure C-6 is a record of the processing and burial of each remains at a temporary interment site. It is completed by MA personnel located at the interment site. The original and one copy of the DD Form 1079 are kept at the interment site until it is closed and all remains are disinterred, at which time, the original is forwarded to the JMAO. The JMAO is responsible for disposition as dictated by AR 25-400-2 (*The Army Records Information Management System (ARIMS)*). An additional copy is maintained by the MA unit conducting the interment/disinterment mission.

5-27. When using DD Form 1079 a new form must be initiated for each individual row of interment or disinterment (See JP 4-06). If any entry cannot be verified, an entry of "UNKNOWN" or "UNK" will be entered.

**BLOCK 1. DATE OF REPORT.**

- 1 Date of report. Enter the date the form was initiated as YYYYMMDD.

**BLOCK 2. PAGE.**

- 2 Page. Enter the individual page number in relation to the series of page numbers (1 of 2, 3 of 4, and so forth).

**BLOCK 3. UNIT OPERATING INTERMENT/DISINTERMENT SITE.**

- 3 Unit operating interment/disinterment site. Enter the designation of the unit performing the interment/disinterment mission. If more than one unit is performing the mission, enter the unit with command authority over the mission.

**BLOCK 4. LOCATION OF THE SITE.**

- 4 Location of the site. Enter the location of the interment/disinterment site using grid coordinates with map reference number.

**BLOCK 5. PROCESSING NUMBER.**

- 5 Processing number. Enter the assigned processing number. Refer to JP 4-06 (*Joint Tactics, Techniques, and Procedures for Mortuary Affairs in Joint Operations*) for determining this number.

**BLOCK 6. INFORMATION ON THE TENTATIVELY IDENTIFIED DECEDENT.**

- 6a Name. The name of the decedent, if known (*BTB: Last, First, MI or Unidentified*). If remains are unidentified, do not enter unknown; enter "Unidentified."
- 6b Grade. The grade of the decedent entered as officer, warrant officer, enlisted, or civilian and alphanumeric grade (for example, O-3, WO-3, E-7, or GS-10).
- 6c SSN. The social security number or serial number of the decedent, if known.
- 6d Branch of Service. The branch of Service of the decedent if known or applicable; for example, U.S. Army, U.S. Navy, U.S. Marine Corps, U.S. Coast Guard, U.S. Air Force, DOD/DA civilian, or coalition/enemy equivalent.
- 6e Organization. The assigned unit or organization of the decedent, if known.

**BLOCK 7. UNIT DELIVERING REMAINS.**

- 7 Unit delivering remains. The unit delivering the remains to the interment site.

**BLOCK 8. DATE RECEIVED.**

- 8 Date received. Enter date the remains were received at the interment/disinterment site as YYYYMMDD.

**BLOCK 9. DATE OF INTERMENT/DISINTERMENT.**

**9** Date of interment/disinterment. Enter the date the remains were interred or disinterred as YYYYMMDD.

**BLOCK 10. INTERMENT/DISINTERMENT LOCATION.**

**10a** Row. The row number where the decedent was interred/disinterred.

**10b** Space. The space within a row where the decedent was interred/disinterred.



## REPORTS

C-18. MA reports are prepared in memorandum format as prescribed by AR 25-50 (*Preparing and Managing Correspondence*). Reports provide the JMAO with an overview of the MA situation within the theater. Samples of common MA reports are listed below; however, additional reports not listed may be necessary as the situation dictates.

- Report of atrocity.
- Report of unrecoverable remains.
- Report of incident.
- Report of area clearance.
- Report of nonrecoverability of major missing portions.

### REPORT OF ATROCITY.

C-19. If the recovery teams inform the collection point of an atrocity, the collection point personnel will prepare an atrocity report in memorandum format (*Per AR 25-50*). In the report (see figure C-8), suspected reasons or causes of the atrocity must be provided. Once complete, the memorandum is forwarded to the JMAO. This information will be used as necessary by the JMAO to initiate an investigation.



	<p><b>CLASSIFICATION</b></p> <p><b>DEPARTMENT OF THE ARMY</b>          UNIT, HIGHER UNIT (<i>If Applicable</i>)          Street Address (<i>If Applicable</i>)          City, State Zip Code+4</p>
<p>REPLY TO ATTENTION OF</p>	
<p>OFFICE SYMBOL</p> <p>MEMORANDUM FOR Commander, Joint Mortuary Affairs Office</p> <p>SUBJECT: Report of Suspected Atrocity</p> <p>1. This collection point #(Enter MACP #) has received from the (Enter unit), the remains of (Enter number of, unit and nationality of remains).</p> <p>2. All remains were recovered from grid coordinates (Enter grid coordinates) on map # (Enter map reference number), by a search and recovery team dispatched from collection point # (Enter MACP #).</p> <p>3. All remains received were (Briefly explain suspected atrocity).</p> <p>FOR THE COMMANDER:</p>   <p style="text-align: right;">NAME RANK, BRANCH/SERVICE Duty Description</p>	<p>DATE</p>

Figure C-8. Report of suspected atrocity

**REPORT OF UNRECOVERED REMAINS.**

C-20. The report of unrecovered remains (see figure C-9) is prepared in memorandum format by the responsible commander when he or she knows where unrecovered remains are located but has not assets needed to recover the remains due to the tactical situation. The report includes, but is not limited to, the number and location of remains, reasons the remains were not recovered, and other relevant information. The responsible commander forwards this report through channels to the JMAO.

	<b>CLASSIFICATION</b>	
	<b>DEPARTMENT OF THE ARMY</b> UNIT, HIGHER UNIT <i>(If Applicable)</i> Street Address <i>(If Applicable)</i> City, State Zip Code+4	
REPLY TO ATTENTION OF	OFFICE SYMBOL	DATE
MEMORANDUM FOR Commander, Joint Mortuary Affairs Office		
SUBJECT: Report of Unrecovered Remains		
<ol style="list-style-type: none"> <li>1. This confirms <i>(verbal/written)</i> communication of <i>(Enter Date)</i>.</li> <li>2. <i>(Enter name and Social Security/Serial Number of who reported unrecovered remains)</i>, reported the suspected location of <i>(Enter the number and nationality of unrecovered remains)</i> remains to me on <i>(Enter Date)</i>.</li> <li>3. The unrecovered remains are <i>(Enter the suspected location of the unrecovered remains to include grid coordinates and map reference)</i>.</li> <li>4. Because the <i>(Briefly Explain why the remains were not recovered)</i>. More information is found within <i>(Enter the situation or commanders' report for the incident)</i>.</li> <li>5. If necessary, a recovery party can be led to the above-mentioned site when the situation permits.</li> </ol>		
FOR THE COMMANDER:		
	NAME	
	RANK, BRANCH/SERVICE	
	Duty Description	


**Figure C-9. Report of unrecovered remains**

**REPORT OF INCIDENT.**

C-21. The report of incident (figure C-10) is prepared in memorandum format to help identify deceased personnel killed in an accident or by any incident that might make identification difficult. The report includes, but is not limited to, the following information:


- Time and date.

- Location of the incident including grid coordinates and map reference numbers.
- Name, grade, social security number, and unit of each person involved in the incident.
- Status of survivors (if any).
- A narrative of what the incident entailed (what took place). The narrative should include all relevant information pertaining to the incident.
- A statement within the narrative that indicates a thorough search and recovery was or was not conducted.
- The name, grade, social security number or serial number, and unit or organization of the person making the report.

	<p><b>CLASSIFICATION</b></p> <p><b>DEPARTMENT OF THE ARMY</b>          UNIT, HIGHER UNIT <i>(If Applicable)</i>          Street Address <i>(If Applicable)</i>          City, State Zip Code+4</p>										
<p>REPLY TO ATTENTION OF</p>											
<p>OFFICE SYMBOL</p>	<p>DATE</p>										
<p>MEMORANDUM FOR Commander, Joint Mortuary Affairs Office</p> <p>SUBJECT: Report of Unrecovered Remains</p>											
<p>1. Incident: <i>Briefly describe the incident.</i></p>											
<p>2. Date Time Group: <i>Enter date time group of the incident.</i></p>											
<p>3. Location: <i>Enter the grid coordinates, map title and sheet number..</i></p>											
<p>4. Circumstances: <i>Enter information pertaining to the incident..</i></p>											
<p>5. Probable Cause: <i>Enter the probable cause of the incident.</i></p>											
<p>6. Personnel Involved:</p> <table style="width: 100%; border-collapse: collapse;"> <thead> <tr> <th style="text-align: left; border-bottom: 1px solid black;"><u>NAME</u></th> <th style="text-align: left; border-bottom: 1px solid black;"><u>SSN</u></th> <th style="text-align: left; border-bottom: 1px solid black;"><u>SERVICE</u></th> <th style="text-align: left; border-bottom: 1px solid black;"><u>UNIT</u></th> <th style="text-align: left; border-bottom: 1px solid black;"><u>DUTY DESCRIPTION</u></th> </tr> </thead> <tbody> <tr> <td> </td> <td> </td> <td> </td> <td> </td> <td> </td> </tr> </tbody> </table>		<u>NAME</u>	<u>SSN</u>	<u>SERVICE</u>	<u>UNIT</u>	<u>DUTY DESCRIPTION</u>					
<u>NAME</u>	<u>SSN</u>	<u>SERVICE</u>	<u>UNIT</u>	<u>DUTY DESCRIPTION</u>							
<p>7. Survivors. Enter names of survivors.</p>											
<p>8. Point of Contact:</p>											
<p>FOR THE COMMANDER:</p>											
<p>NAME RANK, BRANCH/SERVICE Duty Description</p>											

**Figure C-10. Report of Incident**



	<p><b>CLASSIFICATION</b></p> <p><b>DEPARTMENT OF THE ARMY</b>  UNIT, HIGHER UNIT <i>(If Applicable)</i>  Street Address <i>(If Applicable)</i>  City, State Zip Code+4</p>
<small>REPLY TO ATTENTION #</small>	
OFFICE SYMBOL	DATE
MEMORANDUM FOR Commander, Joint Mortuary Affairs Office	
SUBJECT: Report of Area Clearance	
<p>1. I certify that records of this office indicate this unit conducted a thorough search of the following area for remains of U.S. Forces, Coalition, and enemy personnel and, to the best of my knowledge all recoverable remains known to be in this area have been recovered.</p>	
<p>a. Map Sheet Number: <i>(Enter the Map Sheet Number)</i>.</p> <p>b. Map Series: <i>(Enter the Map Series)</i>.</p> <p>c. Map Title: <i>(Enter the Map Title)</i>.</p> <p>d. Grid Squares: <i>(Enter the grid squares cleared or COMPLETE if the entire map sheet is cleared)</i>.</p> <p>e. Scale: <i>(Enter the map scale)</i>.</p>	
<p>2. The area identified by the map sheet listed above has been determined "CLEARED" and no further organized searches will be conducted in this area.</p>	
<p>4. Point of contact for this memorandum is <i>(Enter the point of contact for this information)</i>.</p>	
FOR THE COMMANDER:	
NAME RANK, BRANCH/SERVICE Duty Description	

**Figure C-11. Report of area clearance**

**REPORT OF AREA CLEARANCE.**

C-22. The report of area clearance (figure C-11) is prepared in memorandum format when the final search of an area is complete. The OIC with the responsibility for the geographical area prepares and signs the report. The report is forwarded through channels to the JMAO.

	<p><b>CLASSIFICATION</b></p> <p><b>DEPARTMENT OF THE ARMY</b>                  UNIT, HIGHER UNIT <i>(If Applicable)</i>                  Street Address <i>(If Applicable)</i>                  City, State Zip Code+4</p>
<p>REPLY TO ATTENTION OF</p>	
<p>OFFICE SYMBOL</p>	<p>DATE</p>
<p>MEMORANDUM FOR Commander, Joint Mortuary Affairs Office</p> <p>SUBJECT: Report of Unrecovered / Missing Major Portions</p>	
<ol style="list-style-type: none"> <li>1. Reference search and recovery #: <i>(Enter search and recovery number)</i>.</li> <li>2. A thorough and systematic search covering a 100 meter radius of grid coordinate <i>(Enter grid coordinate)</i> was conducted. It was not possible to recover the complete remains, and no portions were found.</li> <li>3. The recovery was made under supervision of the Commander's representative, <i>(Enter the name of the representative)</i>, who was responsible for the area searched.</li> <li>4. <i>(Enter the name of verifying official)</i> of the <i>(Enter the unit and duty description of the verifying official)</i>, verified that the mission was conducted and there were no major portions found during the search.</li> <li>4. Point of contact for this memorandum is <i>(Enter the point of contact for this information)</i>.</li> </ol>	
<p>NAME RANK, BRANCH/SERVICE Duty Description</p>	

**Figure C-12. Report of Unrecovered/Missing Major Portions**

**REPORT OF UNRECOVERED/MISSING MAJOR PORTIONS.**

C-23. The report of unrecovered or missing major portions (figure C-12) is prepared in memorandum format when remains are missing major portions, such as an arm, leg, or head. The preparer of the report may be the unit of the deceased personnel, the leader of the recovery team, or the receiving MA facility. Tentative identification personnel in the MA facilities need to know that a thorough search was conducted and no additional portions of the deceased were or will be received by their facility. This report is forwarded through channels to the JMAO.

# Glossary

<b>Acronym/Term</b>	<b>Definition</b>
AA	Active Army
ACofS	Assistant Chief of Staff
ADCON	administrative control
AIS	automated information system
AMC	Air Mobility Command
ANCS	alternate net control station
AO	area of operations
AOR	area of responsibility
APOE	aerial port of embarkation
AR	Army regulation
ARNG	Army National Guard
ASCC	Army Service Component Command
ASG	area support group
ASI 4V	Additional Skill Identifier 4V
BCS3	Battle Command Sustainment Support System
BCT	brigade combat team
BSB	Brigade Support Battalion
BTB	believed-to-be
C2	command and control
CAC	Casualty Assistance Command
CBRN	chemical, biological, radiological, and nuclear
CENTCOM	U. S. Central Command
CID	criminal investigation division
CJCSM	Chairman of the Joint Chiefs of Staff Manual
CMAOC	Casualty Memorial Affairs Operations Center
COA	course(s) of action
COE	contemporary operational environment
COMMZ	communication zone
COMSEC	communications security
CONPLANS	contingency plans
CONUS	continental United States
CSS	combat service support
CTC	combined training center
CUL	common user logistics
DCIPS	Defense Casualty Information Processing System
DFAS	Defense Finance and Accounting Service
DIV	division

<b>DOD</b>	Department of Defense
<b>EAC</b>	echelons above corps
<b>EEM</b>	early entry module
<b>FBCB2</b>	Force XXI Battle Command Brigade and Below
<b>FBI</b>	Federal Bureau of Investigation
<b>FIFO</b>	first in, first out
<b>FUNCPLAN</b>	functional plan
<b>G-1</b>	personnel staff officer
<b>G-2</b>	intelligence staff officer
<b>G-4</b>	logistics staff officer
<b>GCC</b>	geographic combatant commanders
<b>GCSS</b>	Global Combat Support System
<b>HBCT</b>	heavy BCT
<b>IBCT</b>	infantry BCT
<b>JFC</b>	joint force commanders
<b>JMAO</b>	joint mortuary affairs office
<b>JMAP</b>	joint mortuary affairs program
<b>JOA</b>	joint operations area
<b>JP</b>	Joint Publication
<b>JPED</b>	Joint Personal Effects Depot
<b>JTF</b>	Joint Task Force
<b>KIA</b>	killed in action
<b>LOC</b>	lines of communication
<b>LOGSITREP</b>	logistics situation report
<b>MA</b>	mortuary affairs
<b>MAC</b>	U.S. Army Mortuary Affairs Center
<b>MACP</b>	mortuary affairs collection point
<b>MADCP</b>	mortuary affairs decontamination collection point
<b>MCT</b>	movement control team
<b>MDCOA</b>	most dangerous course of action
<b>MDMP</b>	military decision making process
<b>METT_TC</b>	mission, enemy, terrain and weather, troops and support available, time available, civil considerations
<b>MIA</b>	missing in action
<b>MPCOA</b>	most probable course of action
<b>MTOE</b>	modified table(s) of organization and equipment
<b>MTS</b>	Movement Tracking System
<b>MTT</b>	mobile training team
<b>NCO</b>	noncommissioned officer
<b>NCOIC</b>	noncommissioned officer in charge
<b>NCS</b>	net control station

<b>NG</b>	National Guard
<b>NGO</b>	nongovernmental organizations
<b>NSN</b>	national stock number
<b>OCIE</b>	organizational clothing and individual equipment
<b>OCONUS</b>	outside the continental United States
<b>TOE</b>	table of organization and equipment
<b>OAFME</b>	Office of the Armed Forces Medical Examiner
<b>OCIL</b>	organizational clothing and individual equipment
<b>OIC</b>	officer in charge
<b>OPLAN</b>	operation plan
<b>OPORD</b>	operation order
<b>PADD</b>	person authorized to direct disposition
<b>PAO</b>	public affairs office
<b>PE</b>	personal effects
<b>PERE</b>	person eligible to receive effects (PERE)
<b>POE</b>	port of entry
<b>PPE</b>	personal protective equipment
<b>QM</b>	quartermaster
<b>RCC</b>	Regional Component Command
<b>RSOI</b>	reception, staging, onward movement, and integration
<b>SBCT</b>	Stryker BCT
<b>SCMO</b>	summary court martial officer
<b>SCO</b>	summary court officer
<b>SecDef</b>	Secretary of Defense (JP 1-02)
<b>SOP</b>	standing operating procedures
<b>SPO</b>	Support Operations Office
<b>SRC</b>	standard requirement code
<b>SSN</b>	social security number
<b>ST</b>	set
<b>TC</b>	transfer case
<b>TDA</b>	table of distribution and allowance
<b>TG</b>	training guide
<b>TMAEA</b>	theater Mortuary Affairs executive agent
<b>TMEP</b>	theater mortuary evacuation point
<b>TO</b>	theater of operations
<b>TOE</b>	table of organization and equipment
<b>TPFDD</b>	time-phased force deployment data
<b>TPFDL</b>	time-phased force and deployment list
<b>TRADOC</b>	U. S. Army Training and Doctrine Command
<b>TSC</b>	Theater Sustainment Command
<b>TTP</b>	tactics, techniques, and procedures

<b>UCMJ</b>	Uniform Code of Military Justice
<b>UEx</b>	unit of employment
<b>USACHPPM</b>	U. S. Army Center for Health Promotion and Preventive Medicine
<b>USAR</b>	United States Army Reserve

# References

## JOINT PUBLICATIONS

Most joint publications are online at <http://www.dtic.mil/doctrine/jel/>.

- CJCSM 3122.03A. *Joint Operation Planning and Execution System Volume II* (Planning Formats and Guidance). 31 December 1999 (current as of 3 May 2004).
- CJCSM 3500.05A. *Joint Task Force Headquarters Master Training Guide*. 01 September 2003.
- CJCSM 3500.04D. *Universal Joint Task List*. 01 August 2005.
- JP 1-02. *Department of Defense Dictionary of Military and Associated Terms*. 12 April 2001 (As Amended Through 14 April 2006).
- JP 3-0. *Doctrine for Joint Operations*. 10 September 2001.
- JP 4-0. *Doctrine for Logistic Support of Joint Operations*. 06 April 2000.
- JP 4-06. *Mortuary Affairs in Joint Operations*. 5 June 2006.

## ARMY PUBLICATIONS

Most Army doctrinal publications are available online at <http://www.adtdl.army.mil>. Army regulations and pamphlets are produced only in electronic media. Most are available online at <http://www.usapa.army.mil>.

- ARTEP 10-498-30-MTP. *Mission Training Plan for Quartermaster Collection Company (Mortuary Affairs)*. 26 March 2001.
- ARTEP 10-698-30-MTP. *Mission Training Plan for Quartermaster Mortuary Affairs Company (Echelons Above Corps)*. 14 April 2000.
- AR 25-50. *Preparing and Managing Correspondence*. 3 June 2002.
- AR 25-400-2. *The Army Records Information Management System (ARIMS)*. 15 November 2004.
- AR 40-562. *Immunizations and Chemoprophylaxis*. 01 November 1995.
- AR 638-2. *Care and Disposition of Remains and Disposition of Personal Effects*. 22 December 2000.
- DA Pam 638-2. *Procedures for the Care and Disposition of Remains and Disposition of Personal Effects*. 22 December 2000.
- FM 1-02. *Operational Terms and Graphics*. 21 September 2004.
- FM 3-0. *Operations*. 14 June 2001.
- FM 3-07. *Stability and Support Operations*. 20 February 2003.
- FM 3-25.26. *Map Reading and Land Navigation*. 18 January 2005.
- FM 3-61.1. *Public Affairs, Tactics, Techniques, and Procedures*. 01 October 2000.
- FM 3-90. *Tactics*. 4 July 2001.
- FM 4-0. *Combat Service Support*. 29 August 2003.
- FM 4-01.30. *Movement Control*. 01 September 2003.
- FM 4-93.4. *Theater Support Command*. 15 April 2003.
- FM 5-0. *Army Planning and Orders Production*. 20 January 2005.
- FM 5-01.12. *Multi-Service Tactics, Techniques, and Procedures for Joint Task Force Liaison Officer Integration (JTF LNO Integration)*. 27 January 2003.
- FM 6-22.5. *Combat Stress* {MCRP 6-11C; NTTP 1-15M}. 23 June 2000.
- FM 7-15. *The Army Universal Task List*. 31 August 2003.

FM 8-51. *Combat Stress Control in a Theater of Operations Tactics, Techniques, and Procedures*. 29 September 1994 (will be revised as FM 4-02.51).

FM 22-51. *Leader's Manual for Combat Stress Control*. 29 September 1994 (will be revised as FM 6-22.5).

FM 100-8. *The Army in Multinational Operations*. 24 November 1997 (will be revised as FM 3-16).

FM 100-14. *Risk Management*. 23 April 1998 (will be revised as FM 5-19).

FM 100-17-3. *Reception, Staging, Onward Movement, and Integration*. 17 March 1999 (will be revised as FM 3-35).

FM 101-5-2. *United States Army Report and Message Formats*. 29 June 1999 (will be revised as FM 6-99.2).

FMI 4-90.1. *Heavy Brigade Combat Team Logistics* (Expires 15 March 2007). 15 March 2005.

## DEPARTMENT OF THE ARMY FORMS

DA Form 54. *Record of Personal Effects*.

DA Form 3161. *Request for Issue or Turn-In*.

DA Form 4160. *Patient's Personal Effects and Clothing Record*.

## DEPARTMENT OF DEFENSE FORMS

DD Form 2A. *Armed Forces of the United States—Geneva Conventions Identification Card*.

DD Form 565. *Statement of Recognition of Deceased*.

DD Form 567. *Record of Search and Recovery*.

DD Form 836. *Dangerous Goods Shipping Paper/Declaration and Emergency Response Information for Hazardous Materials Transported by Government Vehicles/Containers or Vessels*.

DD Form 1074. *Questionnaire of Local Inhabitants*.

DD Form 1075. *Convoy List of Remains of Deceased*.

DD Form 1076. *Military Operations Record of Personal Effects of Deceased Personnel*.

DD Form 1077. *Collection Point Register of Remains*.

DD Form 1079. *Interment/Disinterment Register*.

DD Form 1384. *Transportation Control and Movement Document*.

DD Form 1387. *Military Shipping Label (only available by purchase from IATA)*.

S-7511. *Shippers Declaration of Dangerous Goods* (Forms are provided in theater or may be purchased through IATA).

## OTHER MILITARY PUBLICATIONS

USACHPPM references can be downloaded from: <http://chppm-www.apgea.army.mil/>. Marine publications can be accessed through: <https://www.doctrine.quantico.usmc.mil/>.

MCDP 4. *Logistics*. 21 February 1997.

MCWP 4-1. *Logistical Operations*. 15 April 1999.

MCWP 4-11. *Tactical-Level Logistics*. 13 June 2000.

MCWP 4-12. *Operational-Level Logistics*. 30 January 2002.

USACHPPM TG 185. *Commander's Guide to the Health Risk Assessment Process*. January 1992.



- USACHPPM TG 190. *Guide to Managing Occupational Exposure to Bloodborne Pathogens*. April 2004.
- USACHPPM TG 195. *Guidelines for Protecting Mortuary Affairs Personnel from Potentially Infectious Materials*. October 2001.
- USACHPPM TG 217. *Hazardous Material/Hazardous Waste Management Guidance for Maneuver Brigades During Field and Contingency Operations*. October 2000.
- USACHPPM TG 240. *Combat Stress Behaviors*. June 2004.
- USACHPPM TG 241. *Battle Fatigue/Combat Stress Reaction*. June 2004.
- USACHPPM TG 242. *Battle Fatigue/Combat Stress Reaction Prevention: Leader Actions*. June 2004.
- USACHPPM TG 275. *Personal Protection Equipment Guide for Military Medical Treatment Facility Personnel Handling Casualties from Weapons of Mass Destruction and Terrorism Events*. August 2003.

## OTHER PUBLICATIONS

- DOD Directive 1300.22. *Mortuary Affairs Policy*. 03 February 2000 (Certified through 21 November 2003).
- DOD Directive 3025.1. *Military Support to Civil Authorities*. 15 January 1993.
- DOD Directive 5100.46. *Foreign Disaster Relief*. 04 December 1975.
- Department of Homeland Security. *National Response Plan*. December 2004.
- TG 195. *Guidelines for Protecting Mortuary Affairs Personnel from Potentially Infectious Materials*.

**This page intentionally left blank.**

By Order of the Secretary of the Army:

Official:



JOYCE E. MORROW

*Administrative Assistant to the  
Secretary of the Army*

0635301

PETER J. SCHOOMAKER  
*General, United States Army*  
*Chief of Staff*

**DISTRIBUTION:**

*Active Army, Army National Guard, and U. S. Army Reserve:* To be distributed in accordance with initial distribution number 115759, requirements for FM 4-20.64.

