



United States Department of Agriculture
National Agricultural Statistics Service



Cattle, Sheep & Goat Inventory

Executive Briefing

January 1, 2013

Survey Overview

- **January Cattle, Sheep and Goats**
 - Data Collection Period: Dec. 29 – Jan. 16
 - Sample Sizes
 - Cattle 39,600
 - Sheep & Goats 23,000
 - Collection Methods
 - Phone, mail, internet, personal interview
 - Data Items
 - Total Inventory
 - Inventory by Class
 - Calf/Lamb/Kid Crop



U.S. Cattle and Calves: Revisions to January 1, 2012

Item	Estimate 1,000 head	Change 1,000 head	Revision
All Cattle and Calves	90,769	0	0.00%
Calf Crop	35,313	0	0.00%
All Cows	39,387	+275	+0.70%
Beef Cows	30,158	+275	+0.92%
Bulls	2,096	+44	+2.14%
All Heifers	19,338	-50	-0.26%
Beef Replacement Heifers	5,262	+50	+0.96%
Milk Replacement Heifers	4,622	+95	+2.10%
Other Heifers	9,454	-195	-2.12%
Steers	15,833	-239	-1.49%
Calves < 500	14,115	-30	-0.21%



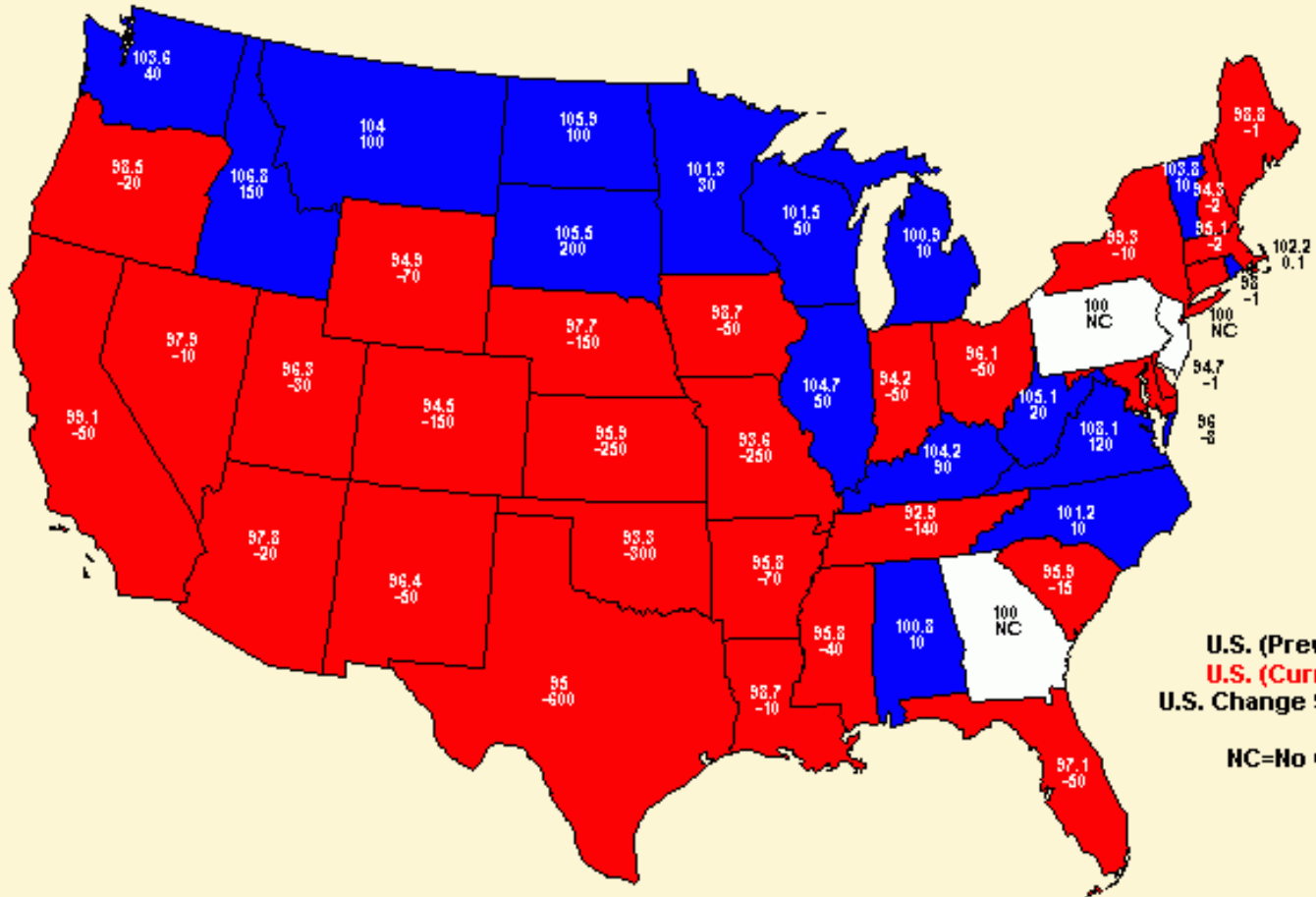
U.S. Cattle Inventory January 1



Items	2012	2013	% PY
	← 1,000 head →		
All Cattle & Calves	90,769	89,300	98%
Cows & Heifers that have Calved	39,387	38,515	98%
Beef Cows	30,158	29,295	97%
Milk Cows	9,230	9,220	100%
All Heifers 500 lbs & over	19,338	19,129	99%
For Beef Replacements	5,262	5,361	102%
Beef Repl. Expected to Calve	3,221	3,280	102%
For Milk Replacements	4,622	4,551	98%
Milk Repl. Expected to Calve	3,065	2,928	96%
Other Heifers	9,454	9,218	97%
Steers 500 lbs & over	15,833	15,813	100%
Bulls 500 lb & over	2,096	2,056	98%
Calves under 500 lbs	14,115	13,787	98%
Cattle on Feed	14,121	13,352	95%
Previous Year Calf Crop	35,313	34,279	97%

January 2013 Cattle Inventory - Percent of PY & Change

All Cattle and Calves



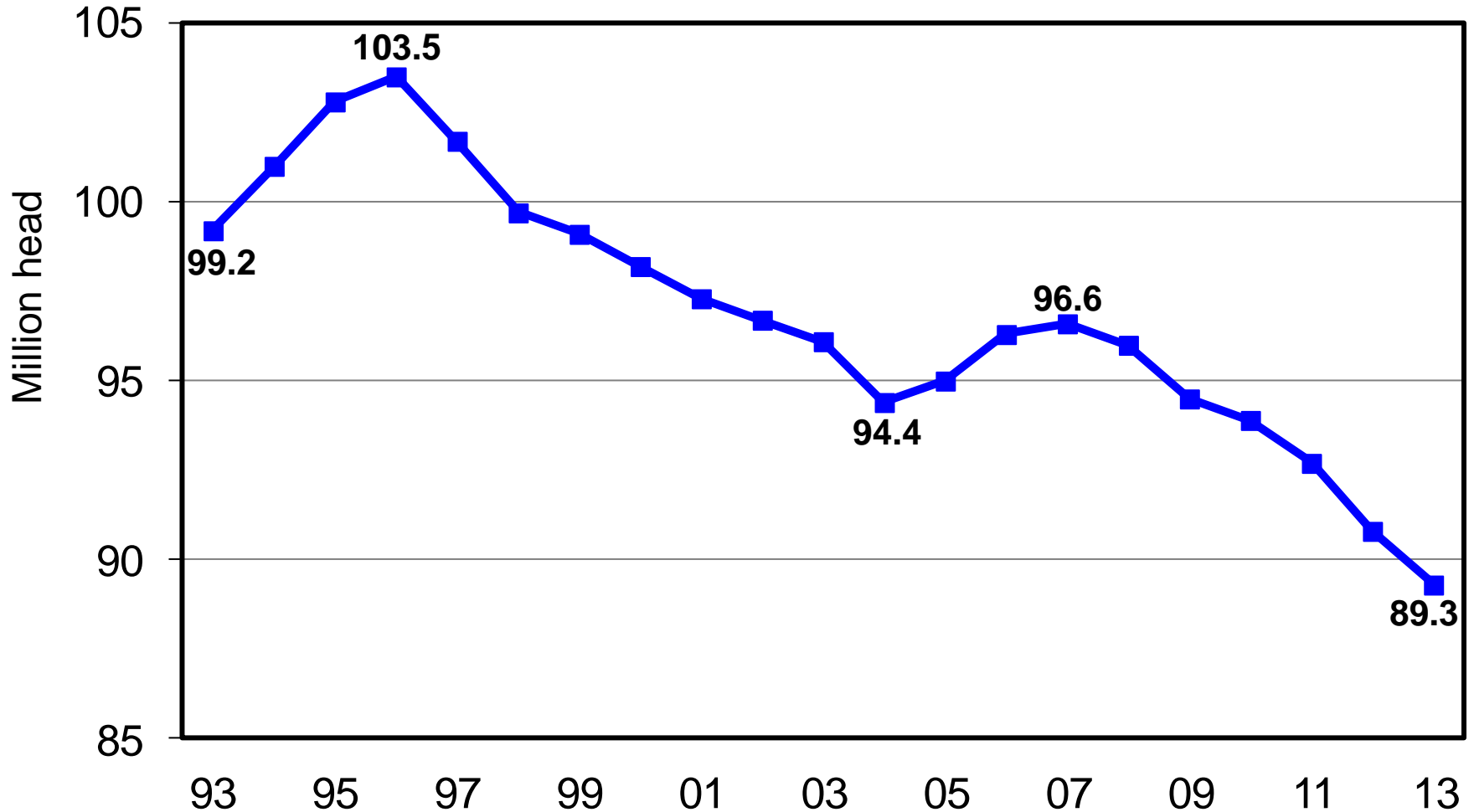
U.S. (Prev) 90768.5
U.S. (Curr) 89299.6
U.S. Change 98.40

NC=No Change

USDA NASS
1/30/13
8:07 AM

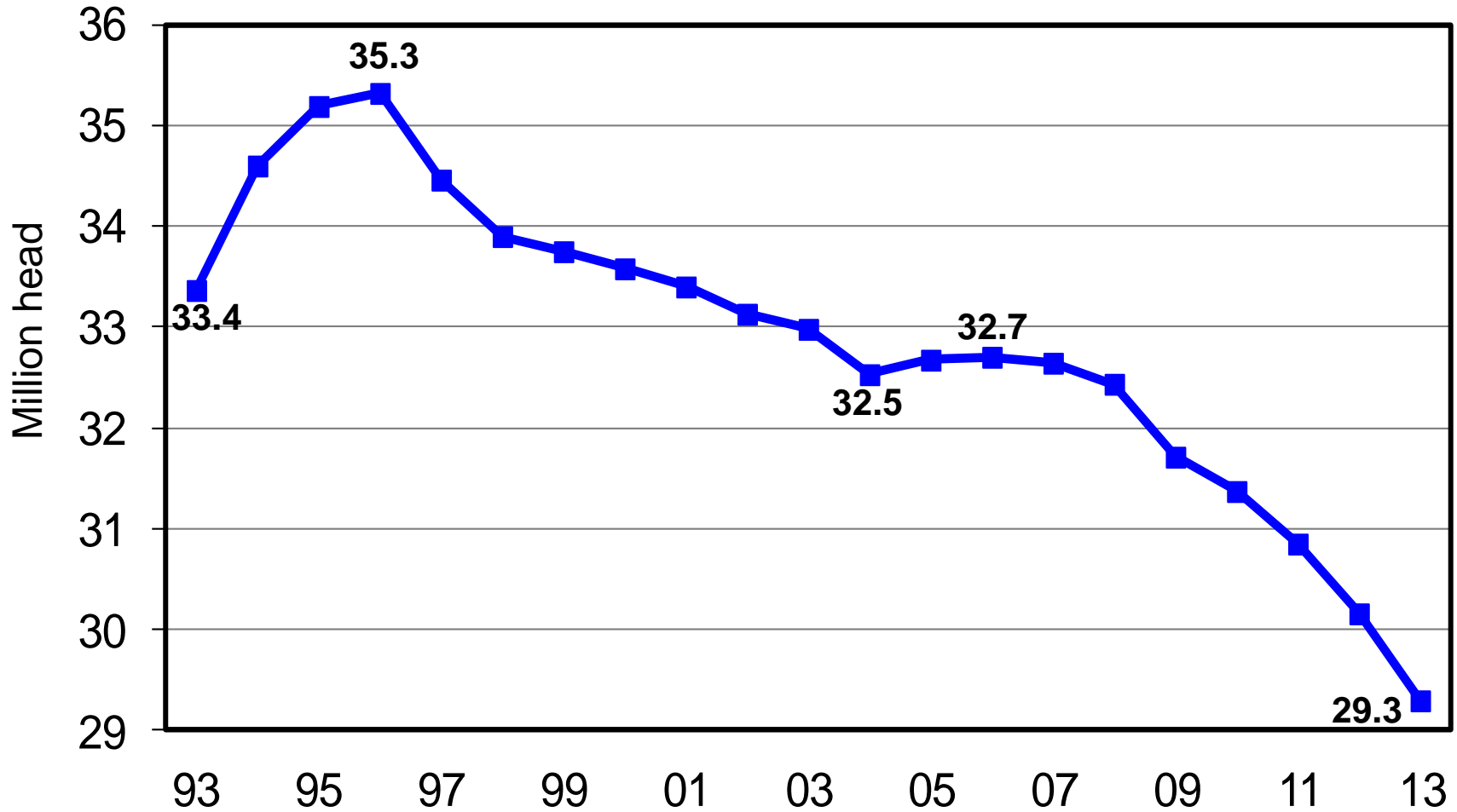
U.S. All Cattle & Calves

January 1, 1993 - 2013



U.S. Beef Cows

January 1, 1993 - 2013



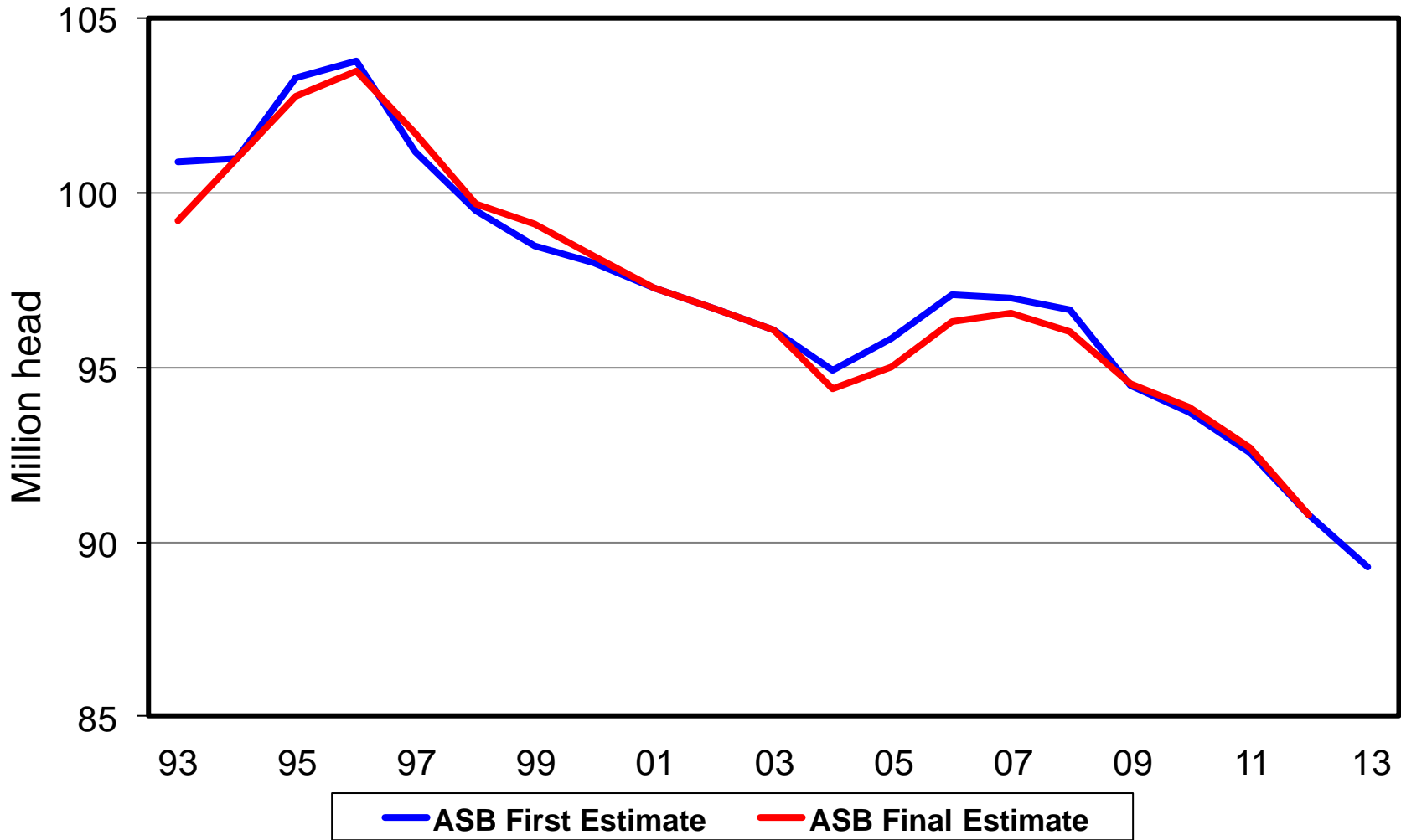
NASS Estimates Compared to Trade Expectations Percent of Previous Year

Inventory Items	NASS Estimate	Trade Average	Trade Range
All Cattle & Calves	98.4%	98.2%	97.2 – 99.0%
Beef Cows & Heifers that have Calved	97.8%	98.7%	97.2 – 100.5%
Calf Crop	97.1%	97.9%	97.4 – 98.8%

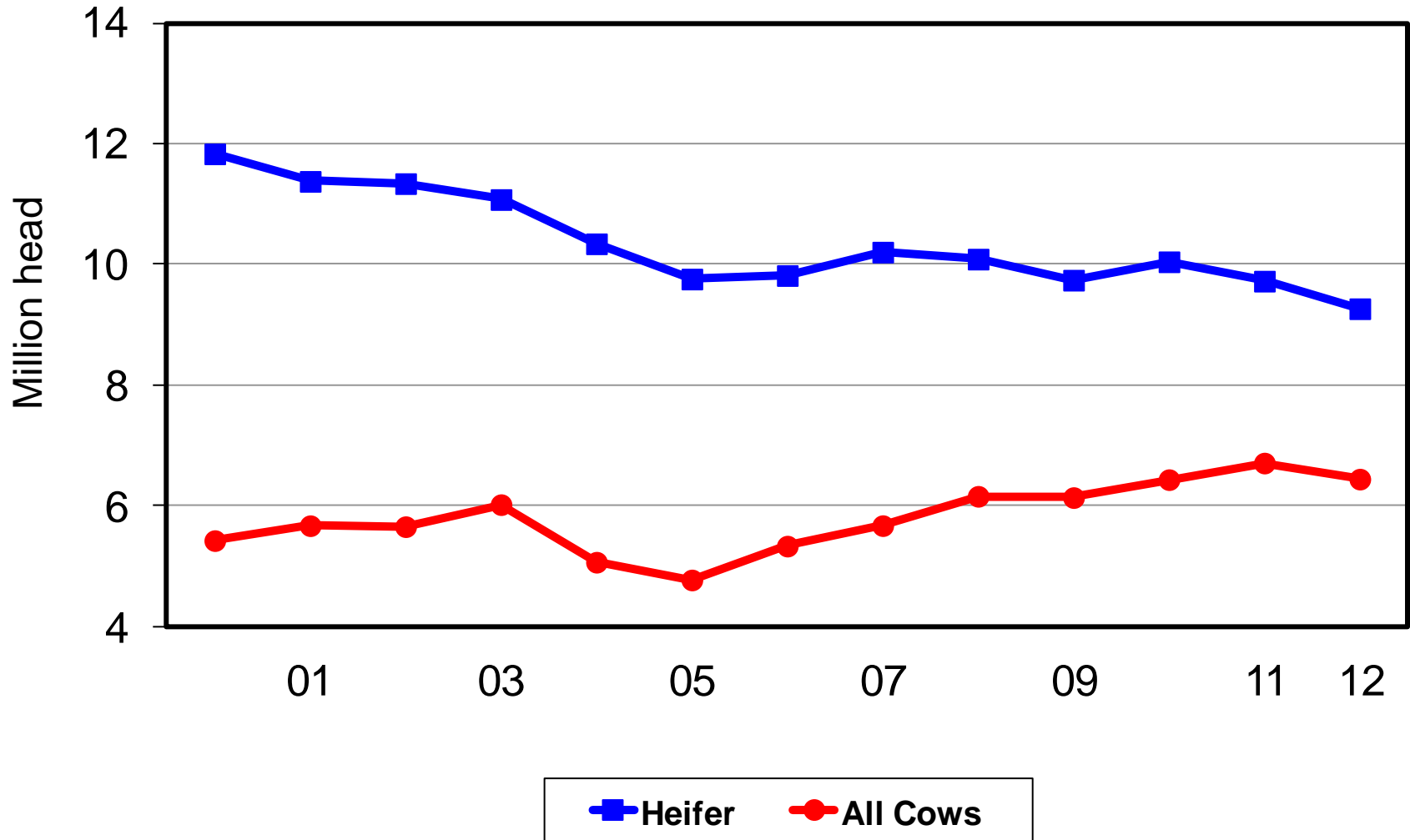
All Cattle Inventory

First Estimate Versus Final Estimate

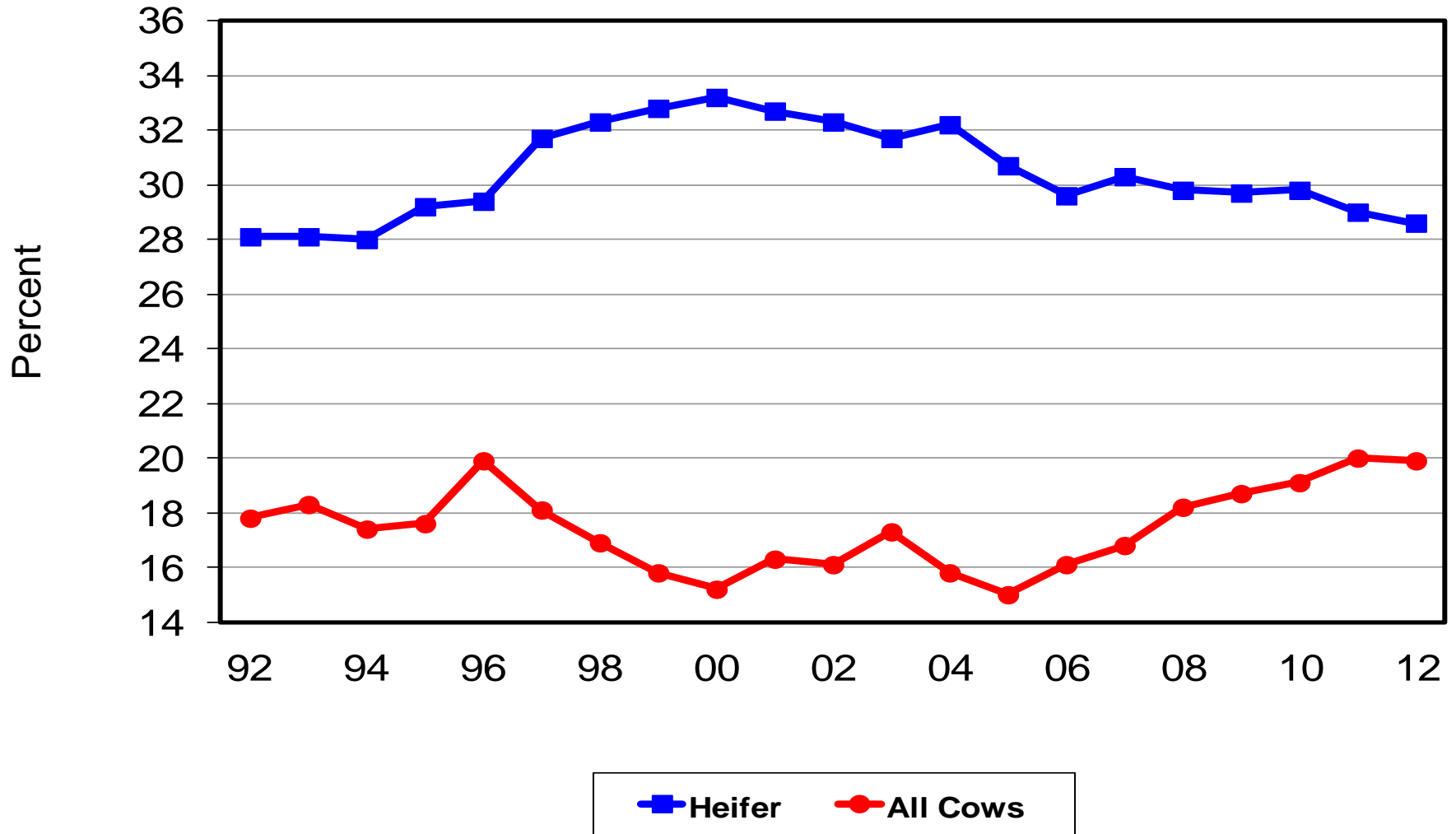
January 1, 1992 - 2012



FI Cow & Heifer Slaughter



All Cow & Heifer Slaughter as a Percent of Total Slaughter





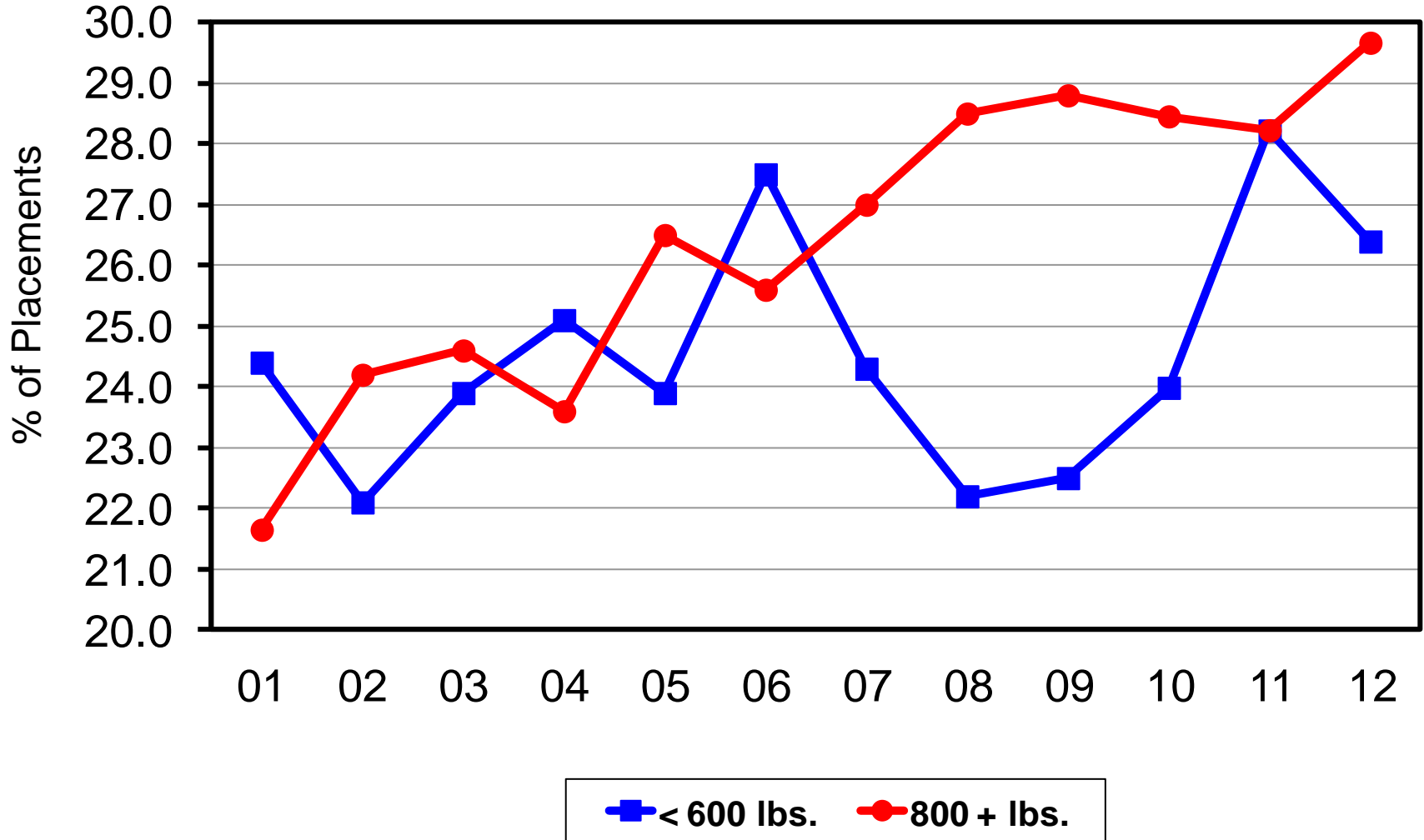
U.S. Feeder Cattle Supply on January 1

Item	2012	2013	% PY
	Thousand head		
Calves < 500 lbs	14,115	13,787	98%
Steers & Heifers > 500 lbs	25,287	25,030	99%
Total Supply	39,402	38,817	99%
Cattle on Feed	14,121	13,352	95%
Feeder Cattle Supply	25,280	25,466	101%
	Million head		
Number Grazing on Small Grain Pasture, 3 States	1.59	1.34	84%
Kansas, Oklahoma, Texas			

Totals may not add due to rounding

February 1, 2013

U.S. % of Total Placements by Size Group



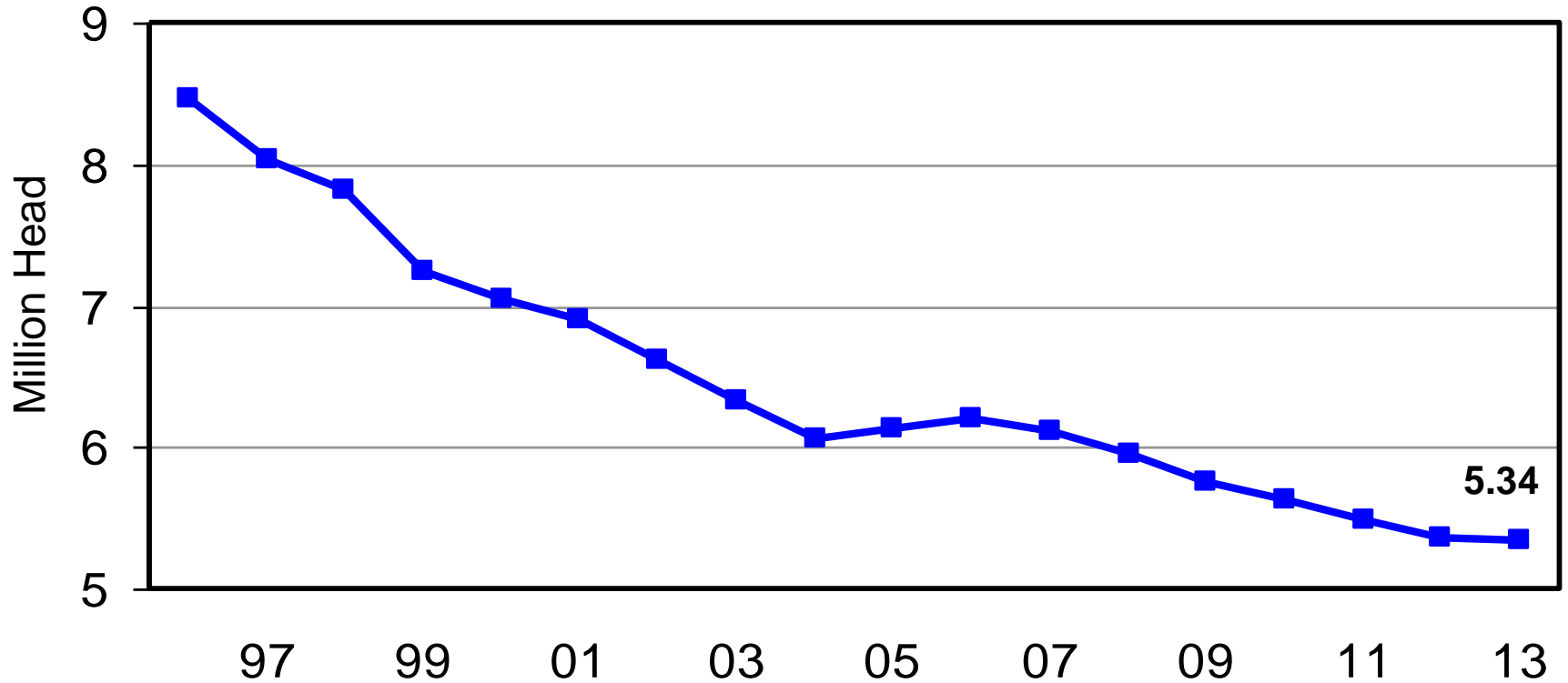


U.S. Sheep and Lamb Inventory, January 1

Items	2012	2013	% PY
	← 1,000 head →		
All Sheep & Lambs	5,365	5,335	99%
Market	1,370	1,360	99%
Breeding Sheep & Lambs	3,995	3,975	99%
Replacement Lambs Under One Year Old	660	660	100%
Ewes One Year Old and Older	3,165	3,140	99%
Rams One Year Old and Older	170	175	103%
Previous Year Lamb Crop	3,510	3,455	98%

U.S. Sheep and Lambs

January 1, 1996 - 2013



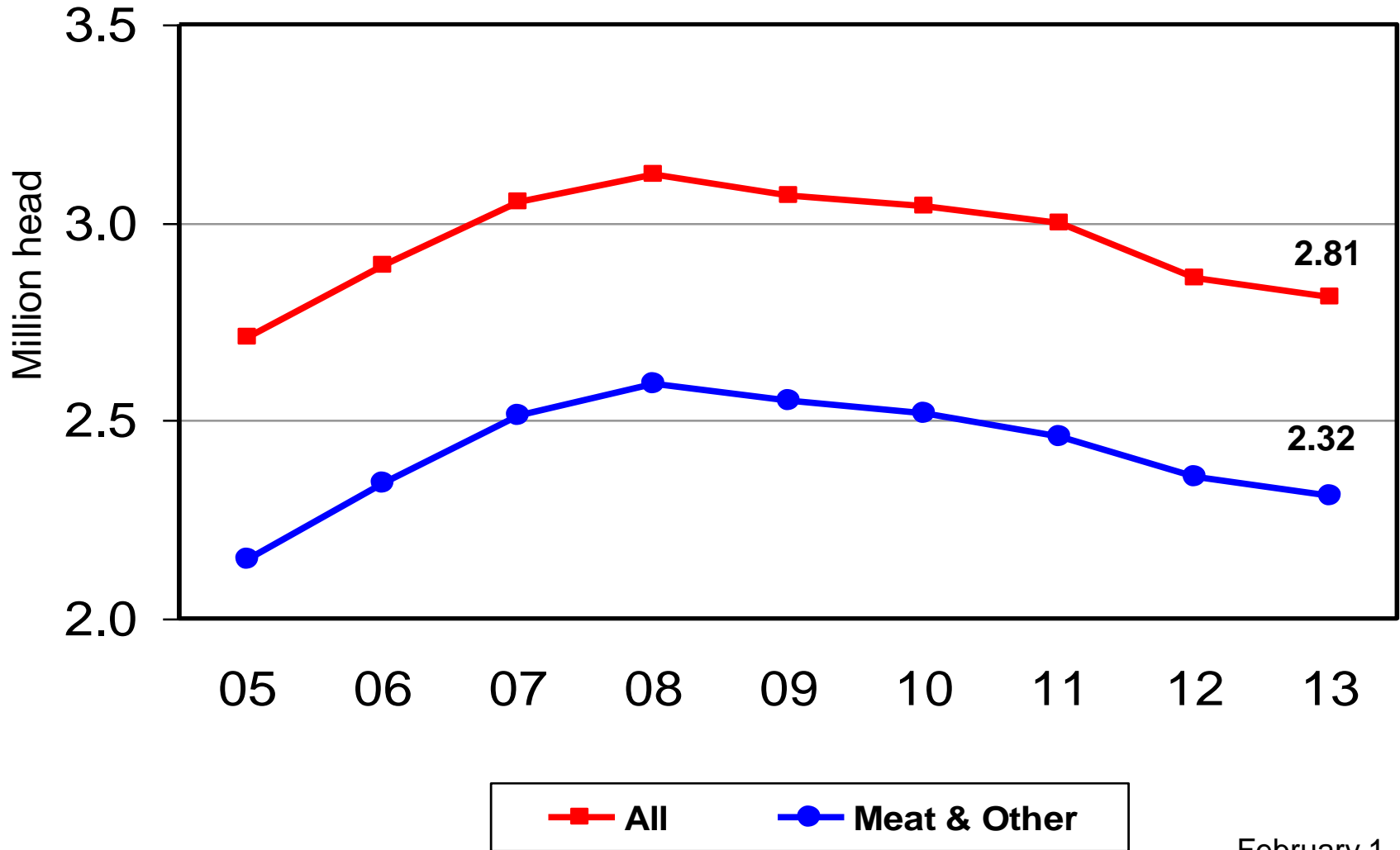


U.S. Goat and Kid Inventory, January 1

Items	2012	2013	% PY
	← 1,000 head →		
All Goats & Kids	2,862	2,811	98%
Breeding	2,375	2,321	98%
Replacement Kids < One Year Old	421	412	98%
Does > One Year Old	1,775	1,734	98%
Bucks > One Year Old	179	175	98%
Market	487	490	101%
Previous Year Kid Crop	1,879	1,787	95%

U.S. All Goats Inventory versus Meat and Other Goats Inventory

January 1, 2005 - 2013



U.S. Goat Inventory by Type

Items	2012	2013	% of PY
	1,000 head	1,000 head	
Total Goats	2,862.0	2,811.0	98%
Angora	146.0	136.0	93%
Milk	360.0	360.0	100%
Meat & Other	2,356.0	2,315.0	98%



United States Department of Agriculture
National Agricultural Statistics Service



Upcoming Reports

- | | |
|-------------|---|
| February 8 | Crop Production |
| February 19 | Farm Numbers and Livestock Operations |
| February 20 | Milk Production |
| February 21 | U.S. and Canadian Cattle, Sheep, and Hogs |
| February 22 | Cattle on Feed |



United States Department of Agriculture
National Agricultural Statistics Service



All Reports Available At
www.nass.usda.gov

For Questions Call or Email

202-720-3570

800-727-9540

nass@nass.usda.gov