




# President's Cancer Panel Update

**National Cancer Advisory Board  
February 8, 2011**

**LaSalle D. Leffall, Jr., M.D., F.A.C.S.**

# Outline

- President's Cancer Panel
  - 2009-2010 Meeting Series
  - 2009-2010 Report
  - 2010-2011 Meeting Series
- 
- A large, faint, light blue and yellow graphic of a sun with rays, positioned in the bottom right corner of the slide.



# The President's Cancer Panel



**LaSalle D. Leffall, Jr., M.D., F.A.C.S., Chair**

**Margaret L. Kripke, Ph.D.**

*Awaiting White House appointment of third Panel member*

**Executive Secretary: Abby Sandler, Ph.D.**



# Mission of the PCP

- The Panel shall monitor the development and execution of the activities of the National Cancer Program, and shall report directly to the President.
- Any delays or blockages in rapid execution of the Program shall immediately be brought to the attention of the President.

# 2009-2010 Meeting Series

## *America's Demographic and Cultural Transformation: Implications for the Cancer Enterprise*



# 2009-2010 Report

- Report draft in progress
- Release anticipated in February 2011

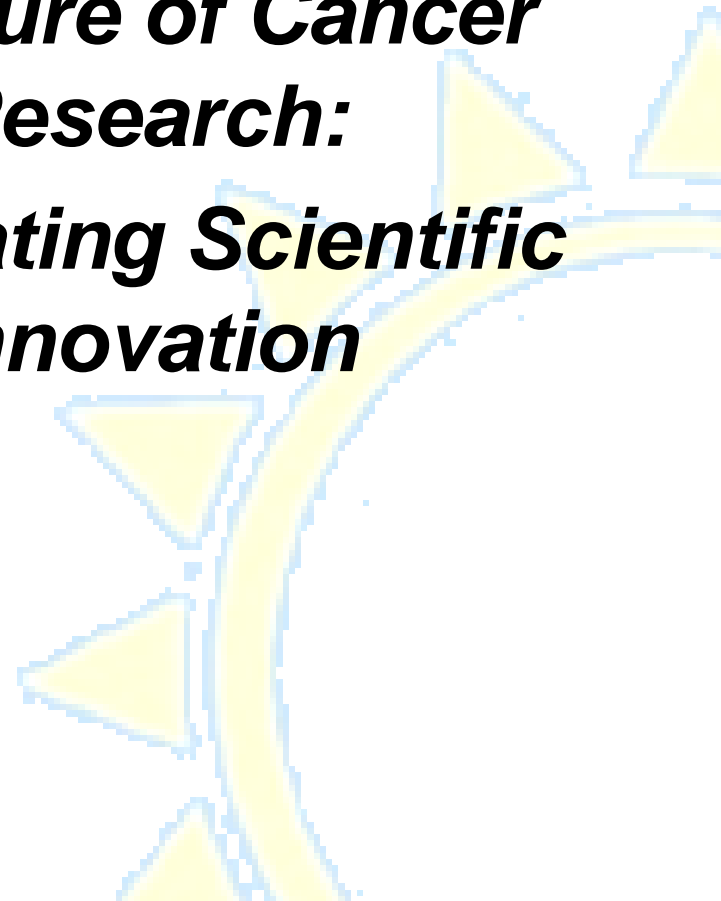




# 2010-2011 Meeting Series



***The Future of Cancer  
Research:  
Accelerating Scientific  
Innovation***



# 2010-2011 Meeting Series

- Inspired by the upcoming 40<sup>th</sup> anniversary of the 1971 National Cancer Act.
- Will attempt to better define the role of various stakeholders in the National Cancer Program (NCP).
- Will consider the best direction for the future of cancer research and the NCP.
- Will consider how the cancer community can utilize a broad array of scientific, computational, and emerging disciplines to accelerate progress of the NCP.





# 2010-2011 Series Information

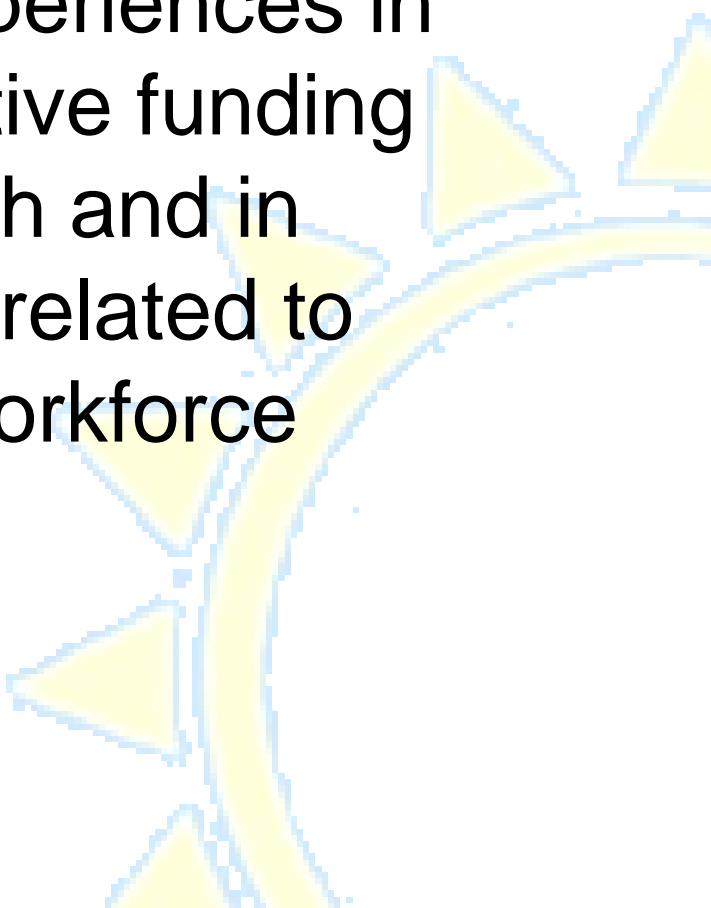
- Meeting information
  - Information flyer posted on PCP website:  
(<http://deainfo.nci.nih.gov/advisory/pcp/At-a-Glance10-11.pdf>)
- Dates and locations
  - September 22, 2010- Boston, MA
  - October 26, 2010- Philadelphia, PA
  - December 14, 2010- Bethesda, MD
  - February 1, 2011- Atlanta, GA

# Bethesda Meeting

- Meeting participants highlighted emerging models of clinical research that are dramatically changing the ways in which research projects are planned and conducted. Many organizations are using Internet-based and other technologies to engage patients in clinical research.
- The Panel also heard about the importance of NCP efforts to promote team science via multi-institutional and cross-disciplinary collaborations. Meeting participants emphasized the need for improved coordination of efforts within the NCP to maximize efficiency.

# Atlanta Meeting

Meeting participants were invited to discuss their experiences in developing innovative funding models for research and in addressing issues related to clinical research workforce shortages.

A large, faint, stylized yellow sun with rays is visible in the background on the right side of the slide.

# 2011-2012 Series

- The topic for the Panel's next series has not yet been decided given the uncertainty regarding the future composition of the Panel.
- The slot on the Panel last held by Lance Armstrong has been vacant for more than two years, and the current Panel members are serving well beyond the scheduled end of their terms.



# 2011-2012 Series

- The Panel and its staff are engaged in internal discussions about possible topics for a 2011-2012 series.
- Possible topics include 1) cancer prevention and 2) the global cancer epidemic and research needs.
- Input regarding these or other topics is welcome.



# Contact Information

President's Cancer Panel  
6116 Executive Blvd  
Suite 220, MSC 8349  
Bethesda, MD 20814-8349  
301.451.9399  
pcp-r@mail.nih.gov

**<http://pcp.cancer.gov>**