

Table 19.1
Non-Hodgkin Lymphoma

Trends in SEER Incidence^{ab} and U.S. Mortality^c Using the Joinpoint Regression Program,
1975-2007 With up to Four Joinpoints, 1992-2007 With up to Two Joinpoints,
Both Sexes by Race/Ethnicity

	Joinpoint Trend 1		Joinpoint Trend 2		Joinpoint Trend 3		Joinpoint Trend 4		Joinpoint Trend 5		AAPC ^d	
	Years	APC	Years	APC	Years	APC	Years	APC	Years	APC	1998-2007	2003-2007
<u>SEER 9 Delay-Adjusted Incidence^a, 1975-2007</u>												
All Races	1975-1991	3.6*	1991-2007	0.6*							0.6*	0.6*
White	1975-1990	3.8*	1990-2007	0.8*							0.8*	0.8*
Black	1975-1995	4.6*	1995-2000	-2.6	2000-2004	5.7	2004-2007	-4.7			0.3	-2.2
<u>SEER 13 Delay-Adjusted Incidence^b, 1992-2007</u>												
All Races	1992-2007	0.4*									0.4*	0.4*
White	1992-2007	0.5*									0.5*	0.5*
Black	1992-2007	0.8*									0.8*	0.8*
<u>SEER 9 Observed Incidence^a, 1975-2007</u>												
All Races	1975-1991	3.7*	1991-2007	0.5*							0.5*	0.5*
White	1975-1991	3.7*	1991-2007	0.5*							0.5*	0.5*
Black	1975-1995	4.6*	1995-2000	-2.8	2000-2004	5.5	2004-2007	-5.6			-0.2	-2.9
<u>SEER 13 Observed Incidence^b, 1992-2007</u>												
All Races	1992-2007	0.3*									0.3*	0.3*
White	1992-2007	0.3*									0.3*	0.3*
White NH ^{ef}	1992-2007	0.5*									0.5*	0.5*
Black	1992-2007	0.5									0.5	0.5
Black NH ^{ef}	1992-2007	0.5									0.5	0.5
API ^e	1992-2007	-0.2									-0.2	-0.2
AI/AN ^{eg}	1992-2007	2.6									2.6	2.6
Hispanic ^f	1992-2007	-0.1									-0.1	-0.1
<u>U.S. Cancer Mortality^c, 1975-2007</u>												
All Races	1975-1991	2.5*	1991-1997	1.6*	1997-2007	-3.2*					-3.2*	-3.2*
White	1975-1991	2.5*	1991-1997	1.6*	1997-2007	-3.2*					-3.2*	-3.2*
Black	1975-1996	2.7*	1996-2007	-2.7*							-2.7*	-2.7*
<u>U.S. Cancer Mortality^c, 1992-2007</u>												
All Races	1992-1997	1.7*	1997-2007	-3.2*							-3.2*	-3.2*
White	1992-1997	1.7*	1997-2007	-3.2*							-3.2*	-3.2*
White NH ^{ef}	1992-1997	1.9*	1997-2007	-3.0*							-3.0*	-3.0*
Black	1992-1997	2.0	1997-2007	-2.9*							-2.9*	-2.9*
Black NH ^{ef}	1992-1997	2.6	1997-2007	-2.7*							-2.7*	-2.7*
API ^e	1992-2007	-2.2*									-2.2*	-2.2*
AI/AN ^{eg}	1992-2007	0.3									0.3	0.3
Hispanic ^f	1992-1997	2.7*	1997-2007	-3.2*							-3.2*	-3.2*

Joinpoint Regression Program Version 3.4.3, April 2010, National Cancer Institute. (<http://srab.cancer.gov/joinpoint/>).

The APC is the Annual Percent Change based on rates age-adjusted to the 2000 US Std Population (19 age groups - Census P25-1130).

^a Trends are from the SEER 9 areas (San Francisco, Connecticut, Detroit, Hawaii, Iowa, New Mexico, Seattle, Utah, and Atlanta).

^b Trends are from the SEER 13 areas (SEER 9 Areas, Los Angeles, San Jose-Monterey, Rural Georgia, and the Alaska Native Registry).

^c Trends are from US Mortality Files, National Center for Health Statistics, Centers for Disease Control and Prevention.

^d The AAPC is the Average Annual Percent Change and is based on the APCs calculated by Joinpoint.

^e API - Asian/Pacific Islander, AI/AN - American Indian/Alaska Native, NH - Non-Hispanic

^f Hispanic and Non-Hispanic are not mutually exclusive from whites, blacks, Asian/Pacific Islanders, and American Indians/Alaska

Natives. Incidence data for Hispanics and Non-Hispanics are based on NHIA and exclude cases from the Alaska Native Registry.

The Hispanic and Non-Hispanic mortality trends exclude deaths from CT, DC, ME, MD, MN, NH, NY, ND, OK and VT.

^g Data for American Indian/Alaska Native are based on the CHSDA (Contract Health Service Delivery Area) counties.

* The APC/AAPC is significantly different from zero ($p < .05$).

- Joinpoint regression line analysis could not be performed on data series.

Table 19.2
Non-Hodgkin Lymphoma

Trends in SEER Incidence^{ab} and U.S. Mortality^c Using the Joinpoint Regression Program,
1975-2007 With up to Four Joinpoints, 1992-2007 With up to Two Joinpoints,
Males by Race/Ethnicity

	Joinpoint Trend 1		Joinpoint Trend 2		Joinpoint Trend 3		Joinpoint Trend 4		Joinpoint Trend 5		AAPC ^d	
	Years	APC	Years	APC	Years	APC	Years	APC	Years	APC	1998-2007	2003-2007
<u>SEER 9 Delay-Adjusted Incidence^a, 1975-2007</u>												
All Races	1975-1991	4.2*	1991-2007	0.3*							0.3*	0.3*
White	1975-1990	4.5*	1990-2007	0.5*							0.5*	0.5*
Black	1975-1994	5.5*	1994-2007	-0.6							-0.6	-0.6
<u>SEER 13 Delay-Adjusted Incidence^b, 1992-2007</u>												
All Races	1992-2007	0.0									0.0	0.0
White	1992-2007	0.2									0.2	0.2
Black	1992-2007	-0.3									-0.3	-0.3
<u>SEER 9 Observed Incidence^a, 1975-2007</u>												
All Races	1975-1991	4.2*	1991-2007	0.2							0.2	0.2
White	1975-1990	4.5*	1990-2007	0.3*							0.3*	0.3*
Black	1975-1994	5.5*	1994-2007	-0.8							-0.8	-0.8
<u>SEER 13 Observed Incidence^b, 1992-2007</u>												
All Races	1992-2007	-0.1									-0.1	-0.1
White	1992-2007	0.0									0.0	0.0
White NH ^{ef}	1992-2007	0.2									0.2	0.2
Black	1992-2007	-0.5									-0.5	-0.5
Black NH ^{ef}	1992-2007	-0.6									-0.6	-0.6
API ^e	1992-2007	-0.4									-0.4	-0.4
AI/AN ^{eg}	1992-2007	2.1									2.1	2.1
Hispanic ^f	1992-2007	-0.6									-0.6	-0.6
<u>U.S. Cancer Mortality^c, 1975-2007</u>												
All Races	1975-1991	2.7*	1991-1997	1.6*	1997-2007	-3.0*					-3.0*	-3.0*
White	1975-1996	2.5*	1996-2007	-2.7*							-2.7*	-2.7*
Black	1975-1996	2.8*	1996-2007	-3.1*							-3.1*	-3.1*
<u>U.S. Cancer Mortality^c, 1992-2007</u>												
All Races	1992-1997	1.7*	1997-2007	-3.0*							-3.0*	-3.0*
White	1992-1997	1.7*	1997-2007	-2.9*							-2.9*	-2.9*
White NH ^{ef}	1992-1997	2.0*	1997-2007	-2.7*							-2.7*	-2.7*
Black	1992-1997	2.3	1997-2007	-3.3*							-3.3*	-3.3*
Black NH ^{ef}	1992-1996	4.0	1996-2007	-2.8*							-2.8*	-2.8*
API ^e	1992-2007	-2.3*									-2.3*	-2.3*
AI/AN ^{eg}	1992-2007	-1.0									-1.0	-1.0
Hispanic ^f	1992-1996	4.0	1996-2007	-3.4*							-3.4*	-3.4*

Joinpoint Regression Program Version 3.4.3, April 2010, National Cancer Institute. (<http://srab.cancer.gov/joinpoint/>).

The APC is the Annual Percent Change based on rates age-adjusted to the 2000 US Std Population (19 age groups - Census P25-1130).

^a Trends are from the SEER 9 areas (San Francisco, Connecticut, Detroit, Hawaii, Iowa, New Mexico, Seattle, Utah, and Atlanta).

^b Trends are from the SEER 13 areas (SEER 9 Areas, Los Angeles, San Jose-Monterey, Rural Georgia, and the Alaska Native Registry).

^c Trends are from US Mortality Files, National Center for Health Statistics, Centers for Disease Control and Prevention.

^d The AAPC is the Average Annual Percent Change and is based on the APCs calculated by Joinpoint.

^e API - Asian/Pacific Islander, AI/AN - American Indian/Alaska Native, NH - Non-Hispanic

^f Hispanic and Non-Hispanic are not mutually exclusive from whites, blacks, Asian/Pacific Islanders, and American Indians/Alaska

Natives. Incidence data for Hispanics and Non-Hispanics are based on NHIA and exclude cases from the Alaska Native Registry.

The Hispanic and Non-Hispanic mortality trends exclude deaths from CT, DC, ME, MD, MN, NH, NY, ND, OK and VT.

^g Data for American Indian/Alaska Native are based on the CHSDA (Contract Health Service Delivery Area) counties.

* The APC/AAPC is significantly different from zero ($p < .05$).

- Joinpoint regression line analysis could not be performed on data series.

Table 19.3
Non-Hodgkin LymphomaTrends in SEER Incidence^{ab} and U.S. Mortality^c Using the Joinpoint Regression Program,
1975-2007 With up to Four Joinpoints, 1992-2007 With up to Two Joinpoints,
Females by Race/Ethnicity

	Joinpoint Trend 1		Joinpoint Trend 2		Joinpoint Trend 3		Joinpoint Trend 4		Joinpoint Trend 5		AAPC ^d	
	Years	APC	Years	APC	Years	APC	Years	APC	Years	APC	1998-2007	2003-2007
<u>SEER 9 Delay-Adjusted Incidence^a, 1975-2007</u>												
All Races	1975-1990	2.9*	1990-2007	1.1*							1.1*	1.1*
White	1975-1990	2.9*	1990-2007	1.1*							1.1*	1.1*
Black	1975-2007	2.6*									2.6*	2.6*
<u>SEER 13 Delay-Adjusted Incidence^b, 1992-2007</u>												
All Races	1992-2004	1.3*	2004-2007	-1.2							0.4	-0.6
White	1992-2007	1.0*									1.0*	1.0*
Black	1992-2007	2.3*									2.3*	2.3*
<u>SEER 9 Observed Incidence^a, 1975-2007</u>												
All Races	1975-1990	2.8*	1990-2004	1.2*	2004-2007	-1.5					0.3	-0.8
White	1975-1990	3.0*	1990-2007	1.0*							1.0*	1.0*
Black	1975-2007	2.5*									2.5*	2.5*
<u>SEER 13 Observed Incidence^b, 1992-2007</u>												
All Races	1992-2004	1.2*	2004-2007	-1.8							0.2	-1.1
White	1992-2004	1.2*	2004-2007	-1.6							0.3	-0.9
White NH ^{ef}	1992-2004	1.3*	2004-2007	-1.4							0.4	-0.7
Black	1992-2007	2.0*									2.0*	2.0*
Black NH ^{ef}	1992-2007	2.0*									2.0*	2.0*
API ^e	1992-2007	0.2									0.2	0.2
AI/AN ^{eg}	1992-2007	3.4									3.4	3.4
Hispanic ^f	1992-2007	0.6*									0.6*	0.6*
<u>U.S. Cancer Mortality^c, 1975-2007</u>												
All Races	1975-1995	2.2*	1995-1998	-0.5	1998-2007	-3.6*					-3.6*	-3.6*
White	1975-1997	2.1*	1997-2007	-3.7*							-3.7*	-3.7*
Black	1975-1997	2.6*	1997-2007	-2.8*							-2.8*	-2.8*
<u>U.S. Cancer Mortality^c, 1992-2007</u>												
All Races	1992-1997	1.7*	1997-2007	-3.5*							-3.5*	-3.5*
White	1992-1997	1.7*	1997-2007	-3.5*							-3.5*	-3.5*
White NH ^{ef}	1992-1994	3.8*	1994-1998	0.0	1998-2007	-3.5*					-3.5*	-3.5*
Black	1992-1997	2.1	1997-2007	-2.5*							-2.5*	-2.5*
Black NH ^{ef}	1992-1997	2.9	1997-2007	-2.4*							-2.4*	-2.4*
API ^e	1992-2007	-1.8*									-1.8*	-1.8*
AI/AN ^{eg}	1992-2007	1.2									1.2	1.2
Hispanic ^f	1992-1997	3.1	1997-2007	-2.8*							-2.8*	-2.8*

Joinpoint Regression Program Version 3.4.3, April 2010, National Cancer Institute. (<http://srab.cancer.gov/joinpoint/>).

The APC is the Annual Percent Change based on rates age-adjusted to the 2000 US Std Population (19 age groups - Census P25-1130).

^a Trends are from the SEER 9 areas (San Francisco, Connecticut, Detroit, Hawaii, Iowa, New Mexico, Seattle, Utah, and Atlanta).^b Trends are from the SEER 13 areas (SEER 9 Areas, Los Angeles, San Jose-Monterey, Rural Georgia, and the Alaska Native Registry).^c Trends are from US Mortality Files, National Center for Health Statistics, Centers for Disease Control and Prevention.^d The AAPC is the Average Annual Percent Change and is based on the APCs calculated by Joinpoint.^e API - Asian/Pacific Islander, AI/AN - American Indian/Alaska Native, NH - Non-Hispanic^f Hispanic and Non-Hispanic are not mutually exclusive from whites, blacks, Asian/Pacific Islanders, and American Indians/Alaska

Natives. Incidence data for Hispanics and Non-Hispanics are based on NHIA and exclude cases from the Alaska Native Registry.

The Hispanic and Non-Hispanic mortality trends exclude deaths from CT, DC, ME, MD, MN, NH, NY, ND, OK and VT.

^g Data for American Indian/Alaska Native are based on the CHSDA (Contract Health Service Delivery Area) counties.

* The APC/AAPC is significantly different from zero (p<.05).

- Joinpoint regression line analysis could not be performed on data series.

Table 19.4
Non-Hodgkin Lymphoma

Delay-adjusted SEER Incidence^a Rates by Year, Race and Sex

Year of Diagnosis:	All Races			Whites			Blacks		
	Total	Males	Females	Total	Males	Females	Total	Males	Females
1975	11.06	12.89	9.58	11.61	13.49	10.11	6.36	7.31	5.31
1976	11.20	12.82	10.04	11.65	13.27	10.50	5.95	7.45	4.87
1977	11.18	12.92	9.82	11.64	13.50	10.20	6.64	7.23	6.10
1978	11.93	14.29	10.12	12.48	14.77	10.74	7.15	9.46	5.17
1979	12.51	14.19	11.20	12.98	14.58	11.75	8.39	11.81	5.91
1980	12.61	15.01	10.78	12.95	15.26	11.19	8.77	10.89	7.20
1981	13.59	15.91	11.81	14.06	16.35	12.35	7.42	10.59	4.98
1982	13.39	15.55	11.61	14.01	16.39	12.05	10.27	10.22	10.01
1983	13.99	16.61	11.96	14.64	17.52	12.42	10.28	10.89	9.62
1984	15.19	18.32	12.77	15.96	19.13	13.51	9.47	12.52	6.92
1985	15.50	18.36	13.17	16.27	19.22	13.86	9.90	11.96	8.33
1986	15.91	19.42	13.02	16.82	20.54	13.77	10.64	13.14	8.47
1987	16.76	20.79	13.45	17.72	22.15	14.04	10.49	10.56	10.10
1988	17.25	21.33	14.08	18.21	22.42	14.91	11.59	15.81	8.49
1989	17.35	21.64	13.83	18.36	23.03	14.51	11.64	14.19	9.74
1990	18.52	23.00	14.81	19.38	23.99	15.55	13.81	17.55	10.88
1991	18.81	23.73	14.60	19.70	24.84	15.30	14.06	18.77	10.40
1992	18.64	23.06	14.96	19.60	24.00	15.86	13.65	18.78	9.66
1993	18.87	23.48	15.02	19.68	24.35	15.73	14.09	19.44	9.70
1994	19.95	25.00	15.77	20.68	25.62	16.54	14.41	21.60	8.68
1995	19.97	25.40	15.43	20.72	26.19	16.06	16.60	23.43	11.31
1996	19.42	24.26	15.46	20.31	25.29	16.21	15.29	19.03	12.12
1997	19.98	24.49	16.47	20.91	25.24	17.51	16.34	24.10	10.91
1998	19.59	22.94	16.81	20.60	24.03	17.74	14.26	16.75	12.28
1999	19.94	24.63	16.26	20.96	25.60	17.28	14.29	18.51	11.08
2000	19.73	24.21	16.10	20.92	25.59	17.11	13.99	18.43	10.69
2001	19.98	24.38	16.41	20.85	25.48	17.06	15.91	18.31	13.78
2002	20.12	24.09	17.00	21.26	25.43	17.91	14.56	17.35	12.45
2003	20.65	24.75	17.51	21.84	26.11	18.51	16.11	19.60	13.61
2004	21.22	25.68	17.75	22.27	26.78	18.74	18.27	23.74	14.25
2005	20.61	25.26	16.87	21.87	26.55	18.07	16.55	19.67	13.98
2006	20.14	24.15	17.02	21.41	25.44	18.25	16.14	20.71	12.77
2007	20.89	25.46	17.24	22.25	27.08	18.28	15.15	17.84	13.10

Additional information on the model used to delay-adjust SEER Incidence rates can be found at (<http://srab.cancer.gov/delay/>).

^a SEER 9 areas (San Francisco, Connecticut, Detroit, Hawaii, Iowa, New Mexico, Seattle, Utah, and Atlanta).
Rates are per 100,000 and are age-adjusted to the 2000 US Std Population (19 age groups - Census P25-1130).

- Delay-adjusted rate is not shown for observed rates based on less than 16 cases for the time interval.

Table 19.5
Non-Hodgkin Lymphoma

Age-adjusted SEER Incidence^a Rates by Year, Race and Sex

Year of Diagnosis:	All Races			Whites			Blacks		
	Total	Males	Females	Total	Males	Females	Total	Males	Females
1975	11.06	12.89	9.58	11.61	13.49	10.11	6.36	7.31	5.31
1976	11.20	12.82	10.04	11.65	13.27	10.50	5.95	7.45	4.87
1977	11.18	12.92	9.82	11.64	13.50	10.20	6.64	7.23	6.10
1978	11.93	14.29	10.12	12.48	14.77	10.74	7.15	9.46	5.17
1979	12.51	14.19	11.20	12.98	14.58	11.75	8.39	11.81	5.91
1980	12.61	15.01	10.78	12.95	15.26	11.19	8.77	10.89	7.20
1981	13.59	15.91	11.81	14.06	16.35	12.35	7.42	10.59	4.98
1982	13.39	15.55	11.61	14.01	16.39	12.05	10.27	10.22	10.01
1983	13.99	16.61	11.96	14.64	17.51	12.42	10.28	10.88	9.62
1984	15.19	18.32	12.77	15.96	19.12	13.51	9.46	12.52	6.92
1985	15.49	18.36	13.17	16.26	19.21	13.85	9.89	11.96	8.32
1986	15.91	19.42	13.02	16.82	20.53	13.77	10.63	13.13	8.46
1987	16.75	20.79	13.44	17.71	22.13	14.03	10.48	10.55	10.09
1988	17.24	21.32	14.08	18.20	22.40	14.90	11.57	15.79	8.47
1989	17.33	21.63	13.82	18.34	23.00	14.49	11.62	14.17	9.72
1990	18.51	22.98	14.80	19.36	23.96	15.53	13.78	17.51	10.86
1991	18.79	23.71	14.59	19.67	24.80	15.28	14.03	18.72	10.37
1992	18.62	23.03	14.94	19.57	23.96	15.84	13.61	18.73	9.63
1993	18.85	23.45	15.00	19.64	24.30	15.70	14.04	19.37	9.67
1994	19.92	24.96	15.74	20.63	25.56	16.50	14.35	21.51	8.65
1995	19.93	25.35	15.40	20.66	26.12	16.01	16.51	23.32	11.25
1996	19.37	24.20	15.42	20.24	25.20	16.15	15.20	18.92	12.05
1997	19.93	24.42	16.42	20.83	25.14	17.44	16.23	23.93	10.84
1998	19.53	22.87	16.75	20.51	23.92	17.66	14.16	16.63	12.19
1999	19.85	24.53	16.18	20.82	25.43	17.17	14.15	18.32	10.97
2000	19.62	24.08	16.01	20.76	25.39	16.98	13.82	18.21	10.56
2001	19.86	24.22	16.31	20.65	25.25	16.90	15.68	18.05	13.59
2002	19.97	23.90	16.87	21.02	25.14	17.71	14.32	17.06	12.23
2003	20.45	24.52	17.35	21.54	25.75	18.25	15.79	19.21	13.33
2004	20.96	25.38	17.54	21.90	26.34	18.43	17.83	23.17	13.91
2005	20.31	24.89	16.63	21.42	26.01	17.70	16.08	19.11	13.58
2006	19.77	23.71	16.71	20.88	24.80	17.80	15.59	20.00	12.33
2007	20.22	24.64	16.68	21.33	25.96	17.53	14.33	16.87	12.38
1975-2007	17.60	21.50	14.50	18.34	22.34	15.15	13.07	16.55	10.33

^a SEER 9 areas (San Francisco, Connecticut, Detroit, Hawaii, Iowa, New Mexico, Seattle, Utah, and Atlanta).
Rates are per 100,000 and are age-adjusted to the 2000 US Std Population (19 age groups - Census P25-1130).
- Statistic not shown. Rate based on less than 16 cases for the time interval.

Table 19.6
Non-Hodgkin Lymphoma

Age-adjusted U.S. Death^a Rates by Year, Race and Sex

Year of Death:	All Races			Whites			Blacks		
	Total	Males	Females	Total	Males	Females	Total	Males	Females
1975	5.63	6.92	4.65	5.83	7.15	4.82	3.74	4.83	2.92
1976	5.71	6.87	4.83	5.94	7.14	5.03	3.54	4.54	2.76
1977	5.77	6.88	4.92	5.96	7.10	5.10	3.89	4.89	3.12
1978	5.93	7.30	4.90	6.15	7.53	5.12	3.90	5.40	2.81
1979	5.95	7.40	4.88	6.18	7.70	5.08	3.65	4.50	2.98
1980	6.23	7.47	5.29	6.47	7.74	5.52	3.99	5.15	3.12
1981	6.16	7.38	5.27	6.40	7.66	5.47	3.98	5.00	3.25
1982	6.55	7.98	5.49	6.83	8.29	5.74	4.12	5.23	3.29
1983	6.66	8.11	5.58	6.92	8.39	5.85	4.30	5.79	3.23
1984	6.76	8.15	5.75	7.05	8.50	6.01	4.19	5.28	3.39
1985	7.06	8.80	5.80	7.34	9.17	6.02	4.62	5.57	3.87
1986	7.31	8.98	6.05	7.59	9.25	6.33	4.95	6.64	3.70
1987	7.26	8.81	6.10	7.56	9.12	6.38	4.73	6.30	3.62
1988	7.52	9.28	6.24	7.82	9.59	6.53	5.01	6.82	3.72
1989	7.83	9.73	6.43	8.12	10.04	6.71	5.33	7.10	4.07
1990	7.87	9.97	6.34	8.16	10.32	6.58	5.39	7.13	4.17
1991	8.19	10.15	6.74	8.50	10.52	7.00	5.70	7.17	4.61
1992	8.22	10.30	6.69	8.53	10.66	6.96	5.64	7.23	4.45
1993	8.25	10.14	6.86	8.57	10.45	7.17	5.69	7.53	4.40
1994	8.63	10.75	7.10	9.00	11.20	7.41	5.54	6.82	4.56
1995	8.72	10.81	7.16	9.09	11.21	7.49	5.79	7.62	4.45
1996	8.75	10.94	7.14	9.09	11.29	7.46	6.21	8.25	4.74
1997	8.88	11.03	7.25	9.21	11.35	7.57	6.34	8.45	4.87
1998	8.69	10.85	7.10	9.03	11.27	7.38	5.99	7.50	4.89
1999	8.32	10.36	6.85	8.67	10.71	7.18	5.65	7.44	4.41
2000	8.16	10.19	6.69	8.53	10.62	7.01	5.20	6.61	4.17
2001	7.89	9.94	6.40	8.19	10.27	6.66	5.61	7.26	4.46
2002	7.62	9.60	6.17	7.93	9.98	6.40	5.41	6.86	4.41
2003	7.33	9.32	5.88	7.64	9.73	6.09	4.93	5.82	4.26
2004	7.04	8.86	5.68	7.32	9.20	5.91	5.00	6.21	4.11
2005	6.89	8.78	5.50	7.18	9.14	5.73	4.76	6.10	3.79
2006	6.68	8.41	5.37	6.95	8.71	5.60	4.92	6.28	3.91
2007	6.52	8.29	5.19	6.79	8.60	5.42	4.53	5.79	3.60
1975-2007	7.43	9.24	6.10	7.72	9.58	6.36	5.02	6.44	3.98

^a US Mortality Files, National Center for Health Statistics, Centers for Disease Control and Prevention.
Rates are per 100,000 and are age-adjusted to the 2000 US Std Population (19 age groups - Census P25-1130).
- Statistic not shown. Rate based on less than 16 cases for the time interval.

Table 19.7
Non-Hodgkin Lymphoma

SEER Incidence^a and U.S. Death^b Rates, Age-Adjusted and Age-Specific Rates, by Race and Sex

	All Races			Whites			Blacks		
	Total	Males	Females	Total	Males	Females	Total	Males	Females
<u>SEER Incidence</u>									
<u>Age at Diagnosis</u>									
Age-Adjusted Rates, 2003-2007									
All ages	19.6	23.6	16.5	20.5	24.6	17.2	14.7	17.8	12.3
Under 65	9.4	11.2	7.7	9.7	11.5	7.8	9.5	11.7	7.5
65 and over	90.1	109.3	77.0	95.5	115.4	81.9	51.2	60.6	45.1
All ages (IARC world std) ^c	13.1	15.6	10.9	13.6	16.2	11.3	10.7	13.0	8.8
Age-Specific Rates, 2003-2007									
<1	-	-	-	-	-	-	-	-	-
1-4	0.6	0.7	0.4	0.5	0.7	0.3	0.6	-	-
5-9	0.9	1.1	0.6	0.9	1.2	0.5	0.8	0.9	-
10-14	1.2	1.6	0.8	1.3	1.6	0.9	1.1	1.5	-
15-19	1.8	2.3	1.4	1.8	2.3	1.3	2.1	2.6	1.6
20-24	2.4	2.9	1.8	2.3	2.8	1.7	2.7	3.5	1.8
25-29	3.3	3.9	2.7	3.4	3.8	2.8	3.5	5.2	2.0
30-34	4.8	5.6	4.0	4.6	5.4	3.8	6.9	8.4	5.5
35-39	7.0	8.5	5.4	6.9	8.4	5.3	9.0	11.4	6.8
40-44	10.3	12.8	7.8	10.6	13.3	7.8	11.2	13.4	9.2
45-49	15.1	18.2	12.1	15.5	18.6	12.3	16.3	20.4	12.6
50-54	22.3	26.2	18.5	22.9	26.8	19.0	23.1	29.5	17.6
55-59	31.4	36.2	26.8	32.3	37.0	27.7	29.6	36.6	23.8
60-64	46.3	54.2	39.0	48.8	57.4	40.8	34.7	38.7	31.4
65-69	64.0	74.3	55.1	68.2	78.4	59.1	43.3	52.0	36.8
70-74	82.5	96.3	71.3	87.6	101.9	75.8	52.0	59.8	46.4
75-79	103.4	124.5	88.1	110.0	131.6	94.1	55.7	70.2	46.7
80-84	119.4	147.9	101.6	126.0	156.0	107.1	60.9	69.0	56.4
85+	106.7	142.3	89.7	112.1	150.2	94.2	48.0	55.2	45.0
<u>U.S. Mortality</u>									
<u>Age at Death</u>									
Age-Adjusted Rates, 2003-2007									
All ages	6.9	8.7	5.5	7.2	9.1	5.7	4.8	6.0	3.9
Under 65	1.9	2.4	1.4	1.9	2.4	1.4	2.2	2.9	1.6
65 and over	41.4	52.2	34.1	43.7	55.0	35.9	22.9	27.7	20.0
All ages (IARC world std) ^c	3.9	4.9	3.0	4.0	5.0	3.1	3.1	4.0	2.5
Age-Specific Rates, 2003-2007									
<1	-	-	-	-	-	-	-	-	-
1-4	0.0	0.0	-	0.0	-	-	-	-	-
5-9	0.1	0.1	0.0	0.1	0.1	0.0	-	-	-
10-14	0.1	0.2	0.1	0.1	0.1	0.1	0.1	0.2	-
15-19	0.2	0.3	0.1	0.2	0.3	0.1	0.3	0.3	0.2
20-24	0.4	0.5	0.3	0.4	0.5	0.3	0.6	0.7	0.5
25-29	0.5	0.6	0.4	0.5	0.6	0.3	0.9	1.0	0.8
30-34	0.7	0.8	0.5	0.6	0.7	0.5	1.1	1.4	0.8
35-39	0.9	1.2	0.7	0.9	1.1	0.7	1.4	1.6	1.2
40-44	1.6	2.1	1.1	1.5	2.0	1.0	2.3	3.1	1.7
45-49	2.6	3.4	1.9	2.5	3.2	1.8	3.7	5.0	2.5
50-54	4.4	5.7	3.1	4.4	5.6	3.1	5.3	7.4	3.5
55-59	7.4	9.5	5.5	7.6	9.6	5.6	7.6	10.2	5.5
60-64	12.6	15.8	9.6	12.9	16.3	9.8	11.6	14.9	9.0
65-69	19.8	25.3	15.0	20.8	26.5	15.8	14.9	19.3	11.6
70-74	31.0	38.8	24.7	32.7	40.7	26.0	20.5	26.2	16.6
75-79	46.8	58.0	38.7	49.4	61.2	40.7	25.2	28.8	23.1
80-84	64.1	80.5	53.9	67.7	84.9	56.9	29.9	34.9	27.3
85+	74.7	96.4	64.8	79.0	102.0	68.4	33.8	39.1	31.6

^a SEER 17 areas. Rates are per 100,000 and are age-adjusted to the 2000 US Std Population (19 age groups - Census P25-1130), unless noted.

^b US Mortality Files, National Center for Health Statistics, Centers for Disease Control and Prevention.

^c Rates are per 100,000 and are age-adjusted to the 2000 US Std Population (19 age groups - Census P25-1130), unless noted.

- Rates are per 100,000 and are age-adjusted to the IARC world standard population.

- Statistic not shown. Rate based on less than 16 cases for the time interval.

Table 19.8
Non-Hodgkin Lymphoma

5-Year Relative and Period Survival (Percent) by Race, Sex, Diagnosis Year and Age

	All Races			Whites			Blacks		
	Total	Males	Females	Total	Males	Females	Total	Males	Females
5-Year Relative Survival (Percent)									
Year of Diagnosis:									
1960-1963 ^a	-	-	-	31	31	31	-	-	-
1970-1973 ^a	-	-	-	41	39	43	-	-	-
1975-1977 ^b	48.1	47.0	49.2	48.5	47.9	49.1	49.1	42.7	56.3 ^f
1978-1980 ^b	49.8	47.8	51.9	49.9	48.1	51.7	52.3	48.0	58.1
1981-1983 ^b	52.4	52.1	52.8	52.7	52.4	53.0	50.6	49.8	51.5
1984-1986 ^b	53.4	51.5	55.4	53.8	52.1	55.7	47.7	44.9	51.3
1987-1989 ^b	52.3	48.6	56.9	52.8	49.1	57.3	47.4	42.4	53.5
1990-1992 ^b	51.8	47.2	57.8	52.9	48.2	58.7	42.0	37.8	47.7
1993-1995 ^b	53.8	49.5	59.4	54.6	50.6	59.8	42.1	35.4	54.9
1996-1998 ^b	60.4	58.2	63.1	61.2	59.0	63.9	54.5	52.4	57.5
1999-2006 ^b	69.1 ^e	67.1 ^e	71.4 ^e	70.5 ^e	68.9 ^e	72.3 ^e	60.0 ^e	54.5	66.4
5-Year Period Survival (Percent) ^{cd}									
Year of Diagnosis:									
1999-2006	69.2	67.7	70.9	70.1	68.9	71.4	59.9	55.1	65.7
Stage Distribution (%) 1999-2006 ^c									
All Stages									
Number of cases	87,471	46,769	40,702	74,220	39,631	34,589	6,436	3,520	2,916
Percent	100%	100%	100%	100%	100%	100%	100%	100%	100%
Localized	29	28	31	29	28	30	28	26	30
Regional	15	15	16	15	15	16	14	13	15
Distant	47	49	44	48	50	45	50	53	46
Unstaged	9	8	9	8	8	9	8	7	9
5-Year Relative Survival (Percent), 1999-2006 ^c									
Age at Diagnosis:									
Ages <45	75.0	71.6	80.8	77.3	73.8	83.1	60.5	55.6	68.1
Ages 45-54	75.5	71.8	80.9	77.4	73.8	82.8	59.9	53.4	69.2
Ages 55-64	72.2	68.6	76.8	73.1	69.9	77.1	63.4	56.3	72.1
Ages 65-74	64.7	61.2	68.3	65.3	61.8	68.8	55.0	47.2	61.7
Ages 75+	51.9	51.0	52.5	52.8	51.8	53.6	43.0	48.2	39.1
Ages <65	74.2	70.6	79.3	75.7	72.4	80.5	61.1	55.1	69.6
Ages 65+	58.5	56.7	60.1	59.2	57.4	60.8	50.4	47.8	51.5
Stage:									
All Stages	67.4	65.4	69.6	68.3	66.6	70.2	58.5	53.9	64.0
Localized	81.0	79.7	82.4	81.5	80.5	82.5	76.5	70.9	82.2
Regional	70.6	69.3	72.1	71.6	70.3	73.0	62.9	61.1	64.4
Distant	58.0	56.2	60.3	59.5	58.0	61.6	46.0	43.0	50.1
Unstaged	65.8	64.2	67.4	64.9	63.6	66.3	62.1	56.2	67.7

^a Based on End Results data from a series of hospital registries and one population-based registry.
^b Based on the SEER 9 areas (San Francisco, Connecticut, Detroit, Hawaii, Iowa, New Mexico, Seattle, Utah, Atlanta).
Based on follow-up of patients into 2007.
^c Based on the SEER 17 areas (San Francisco, Connecticut, Detroit, Hawaii, Iowa, New Mexico, Seattle, Utah, Atlanta, San Jose-Monterey, Los Angeles, Alaska Native Registry, Rural Georgia, California excluding SF/SJM/LA, Kentucky, Louisiana and New Jersey). California excluding SF/SJM/LA, Kentucky, Louisiana, and New Jersey contribute cases for diagnosis years 2000-2006. The remaining 13 SEER Areas contribute cases for the entire period 1999-2006. Based on follow-up of patients into 2007.
^d Period survival provides a more up-to-date estimate of survival by piecing together the most recent conditional survival estimates from several cohorts. It is computed here using three year calendar blocks (2004-2006: 0-1 year survival), (2003-2005: 1-2 year survival), (2002-2004: 2-3 year survival), (2001-2003: 3-4 year survival), (2000-2002: 4-5 years survival).
^e The difference between 1975-1977 and 1999-2006 is statistically significant (p<.05).
^f The standard error is between 5 and 10 percentage points.
^g The standard error is greater than 10 percentage points.
- Statistic could not be calculated due to fewer than 25 cases during the time period.

Table 19.9
Non-Hodgkin Lymphoma

SEER^a Relative Survival (Percent)
By Year of Diagnosis

All Races, Males and Females

Survival Time	Year of Diagnosis																			
	1975- 1979	1980- 1984	1985- 1989	1990	1991	1992	1993	1994	1995	1996	1997	1998	1999	2000	2001	2002	2003	2004	2005	2006
1-year	71.3	74.1	72.2	70.8	70.4	71.5	71.9	71.4	70.8	73.9	76.5	77.4	78.1	77.7	79.4	81.5	80.8	81.5	82.0	81.4
2-year	61.2	64.8	63.6	61.8	61.6	62.9	64.0	63.7	62.6	66.5	69.0	70.7	71.8	72.2	74.0	76.6	76.3	76.5	77.7	
3-year	55.8	59.7	59.2	57.2	57.3	58.7	59.4	59.4	58.2	63.0	65.7	67.3	67.9	68.8	71.2	74.0	74.2	74.4		
4-year	52.0	56.0	55.6	53.3	54.7	55.6	56.6	56.2	55.6	59.9	63.1	65.0	65.9	66.9	69.5	72.4	73.1			
5-year	48.6	52.6	52.5	51.0	52.0	52.5	54.0	54.0	53.2	57.5	60.9	62.7	63.9	65.6	67.8	70.9				
6-year	45.5	49.7	50.0	48.7	49.4	50.2	52.0	52.3	51.2	55.9	58.9	60.3	61.5	64.4	66.7					
7-year	43.1	47.5	47.9	46.1	46.6	47.9	50.5	50.6	49.7	54.3	57.1	58.8	60.0	62.9						
8-year	41.0	45.7	45.6	44.3	44.4	46.6	48.6	49.1	48.2	52.6	55.2	57.9	59.0							
9-year	39.3	43.9	43.9	43.1	42.9	45.7	47.4	47.6	47.3	51.9	54.2	56.6								
10-year	38.2	42.3	42.5	42.2	41.9	44.3	46.2	46.2	46.9	50.9	53.2									
11-year	36.9	41.3	41.4	40.6	40.7	43.2	45.1	44.9	46.0	49.7										
12-year	36.1	40.1	40.1	39.4	40.0	42.4	44.3	44.3	45.1											
13-year	35.4	39.2	39.2	38.4	39.5	41.6	42.9	43.0												
14-year	34.5	38.5	38.5	37.8	38.4	40.4	41.9													
15-year	33.5	37.5	37.7	37.6	37.2	39.9														
16-year	32.7	36.7	37.2	36.7	36.6															
17-year	32.5	36.3	36.7	36.6																
18-year	32.2	35.9	36.3																	
19-year	31.8	35.5																		
20-year	31.3	34.9																		

^a Based on the SEER 9 areas (San Francisco, Connecticut, Detroit, Hawaii, Iowa, New Mexico, Seattle, Utah, and Atlanta).

Table 19.10
Non-Hodgkin Lymphoma

SEER^a Relative Survival (Percent)
By Year of Diagnosis

All Races, Males

Year of Diagnosis

	1975- 1979	1980- 1984	1985- 1989	1990	1991	1992	1993	1994	1995	1996	1997	1998	1999	2000	2001	2002	2003	2004	2005	2006
Survival Time																				
1-year	70.6	73.7	69.8	66.7	66.8	68.4	68.7	68.1	67.3	71.9	75.7	75.5	76.8	76.8	78.3	81.2	80.1	80.7	81.4	81.7
2-year	60.4	64.8	61.1	57.7	57.3	58.3	59.7	60.2	59.0	64.0	67.6	68.8	70.1	71.0	72.0	75.8	75.3	76.0	76.6	
3-year	54.6	59.3	56.4	52.7	52.8	54.4	55.0	55.4	54.8	60.5	64.4	65.4	65.3	67.5	69.0	73.0	73.2	73.7		
4-year	50.7	55.4	52.4	48.9	50.2	50.8	52.0	52.2	52.1	57.0	61.6	63.3	62.9	64.9	66.9	71.2	71.8			
5-year	47.0	52.0	49.3	46.7	48.0	46.9	49.2	49.8	49.4	54.6	59.2	60.7	60.8	63.2	65.1	69.3				
6-year	44.3	48.8	46.7	45.0	45.3	45.2	47.3	48.4	47.5	52.3	57.3	58.2	58.1	62.1	63.6					
7-year	41.9	46.6	44.5	42.4	42.6	43.0	46.6	46.9	46.0	50.5	55.5	56.7	56.8	60.7						
8-year	40.1	44.8	42.4	40.8	40.3	41.8	44.8	45.1	44.4	48.9	53.4	55.7	56.1							
9-year	38.2	43.1	40.7	39.5	38.7	40.7	43.7	43.4	43.6	48.1	52.1	54.1								
10-year	36.9	41.3	39.4	38.8	37.7	39.2	43.0	42.2	43.2	47.3	50.9									
11-year	35.9	40.0	38.3	37.6	36.8	38.8	41.6	41.3	42.4	45.8										
12-year	35.3	39.1	37.1	36.3	36.2	38.1	41.0	40.6	41.1											
13-year	34.3	38.5	36.4	35.2	35.7	37.0	39.8	39.6												
14-year	33.2	37.8	35.6	34.6	34.8	35.1	38.7													
15-year	32.0	37.0	34.9	34.3	33.4	34.5														
16-year	31.3	36.0	34.3	33.0	32.7															
17-year	30.9	35.6	33.7	32.8																
18-year	30.8	35.4	33.3																	
19-year	30.6	35.2																		
20-year	30.4	34.6																		

^a Based on the SEER 9 areas (San Francisco, Connecticut, Detroit, Hawaii, Iowa, New Mexico, Seattle, Utah, and Atlanta).

Table 19.11
Non-Hodgkin Lymphoma

SEER^a Relative Survival (Percent)
By Year of Diagnosis

All Races, Females

Year of Diagnosis

	1975- 1979	1980- 1984	1985- 1989	1990	1991	1992	1993	1994	1995	1996	1997	1998	1999	2000	2001	2002	2003	2004	2005	2006
Survival Time																				
1-year	72.1	74.4	75.0	76.0	75.2	75.4	76.0	75.6	75.6	76.6	77.5	79.4	79.7	78.8	80.6	81.9	81.6	82.4	82.6	81.2
2-year	62.0	64.7	66.6	66.8	67.2	68.7	69.4	68.2	67.3	69.6	70.8	72.8	73.9	73.6	76.4	77.5	77.5	76.9	79.1	
3-year	57.0	60.1	62.4	62.9	63.3	64.1	65.1	64.5	62.7	66.3	67.3	69.4	71.1	70.5	73.8	75.2	75.2	75.2		
4-year	53.4	56.7	59.4	58.8	60.8	61.6	62.6	61.4	60.4	63.5	64.9	66.9	69.5	69.3	72.6	73.8	74.5			
5-year	50.1	53.4	56.4	56.4	57.3	59.6	60.2	59.6	58.5	61.2	62.9	65.0	67.5	68.6	71.0	72.6				
6-year	46.7	50.6	54.1	53.4	54.8	56.6	58.1	57.6	56.2	60.6	60.8	62.6	65.5	67.2	70.4					
7-year	44.2	48.5	51.9	50.9	51.9	54.3	55.4	55.4	54.7	59.2	59.1	61.3	63.8	65.6						
8-year	41.9	46.6	49.5	48.6	50.0	52.8	53.6	54.5	53.5	57.6	57.4	60.5	62.3							
9-year	40.5	44.8	47.8	47.6	48.8	52.1	52.2	53.4	52.6	56.8	56.7	59.5								
10-year	39.5	43.5	46.3	46.6	47.4	50.9	50.5	51.6	51.9	55.4	56.0									
11-year	37.9	42.6	45.2	44.5	46.1	48.9	49.9	49.8	51.2	54.8										
12-year	36.8	41.2	43.9	43.5	45.1	48.0	48.7	49.1	50.8											
13-year	36.5	40.1	42.7	42.6	44.7	47.4	47.3	47.8												
14-year	35.8	39.2	42.0	41.9	43.5	47.3	46.5													
15-year	34.9	38.0	41.2	41.6	42.8	47.1														
16-year	34.1	37.5	40.7	41.6	42.4															
17-year	33.9	37.0	40.6	41.6																
18-year	33.6	36.5	40.2																	
19-year	33.0	35.7																		
20-year	32.2	35.3																		

^a Based on the SEER 9 areas (San Francisco, Connecticut, Detroit, Hawaii, Iowa, New Mexico, Seattle, Utah, and Atlanta).

Table 19.12

Non-Hodgkin Lymphoma

Number of Cases

By SEER Location and Year of Diagnosis, 1975-2007

All Races, Males, All Ages

Year of Diagnosis

SEER Location	1975- 1979	1980- 1981	1982- 1983	1984- 1985	1986- 1987	1988- 1989	1990- 1991	1992- 1993	1994- 1995	1996- 1997	1998- 1999	2000- 2001	2002- 2003	2004- 2005	2006- 2007
SEER 9 ^b	5,222	2,506	2,702	3,174	3,626	3,988	4,568	4,727	5,317	5,241	5,247	5,521	5,720	6,155	6,176
SEER 9 except SF-Oakland	4,283	2,088	2,265	2,599	2,818	3,086	3,505	3,694	4,152	4,232	4,351	4,477	4,777	5,152	5,213
San Francisco- Oakland SMSA ^c	939	418	437	575	808	902	1,063	1,033	1,165	1,009	896	1,044	943	1,003	963
San Francisco City/County	245	96	123	210	326	393	467	410	449	352	213	255	218	280	210

Age-Adjusted Cancer Incidence Rates^a

By SEER Location and Year of Diagnosis, 1975-2007

All Races, Males, All Ages

Year of Diagnosis

SEER Location	1975- 1979	1980- 1981	1982- 1983	1984- 1985	1986- 1987	1988- 1989	1990- 1991	1992- 1993	1994- 1995	1996- 1997	1998- 1999	2000- 2001	2002- 2003	2004- 2005	2006- 2007
SEER 9 ^b	13.4	15.5	16.1	18.3	20.1	21.5	23.3	23.2	25.2	24.3	23.7	24.2	24.2	25.1	24.2
SEER 9 except SF-Oakland	13.2	15.4	16.1	18.1	18.8	20.0	21.7	21.8	23.5	23.5	23.4	23.3	24.1	25.0	24.2
San Francisco- Oakland SMSA ^c	14.8	15.8	16.0	19.5	26.7	28.5	31.7	30.5	33.5	28.7	25.1	28.4	24.9	25.7	23.9
San Francisco City/County	14.3	14.4	17.6	29.3	44.4	51.9	61.0	52.3	57.3	44.5	27.4	32.1	26.0	33.4	23.6

^a Rates are per 100,000 males and are age-adjusted to the 2000 US Std Population (19 age groups - Census P25-1130).

^b The SEER 9 areas are San Francisco-Oakland SMSA, Connecticut, Detroit, Hawaii, Iowa, New Mexico, Seattle, Utah and Atlanta.

^c The San Francisco-Oakland SMSA represents 15% of all persons in the SEER areas. For this age group, all SEER areas may not be generalizable to the United States for Non-Hodgkin Lymphoma.

- Statistic not shown. Rate based on less than 4 cases for the time interval.

Table 19.13

Non-Hodgkin Lymphoma

Number of Cases

By SEER Location and Year of Diagnosis, 1975-2007

All Races, Males, Ages 0-19

Year of Diagnosis

SEER Location	1975- 1979	1980- 1981	1982- 1983	1984- 1985	1986- 1987	1988- 1989	1990- 1991	1992- 1993	1994- 1995	1996- 1997	1998- 1999	2000- 2001	2002- 2003	2004- 2005	2006- 2007
SEER 9 ^b	223	88	108	89	94	85	100	89	119	105	105	120	126	107	104
SEER 9 except SF-Oakland	191	79	95	80	80	77	86	74	106	84	93	100	114	91	85
San Francisco- Oakland SMSA ^c	32	9	13	9	14	8	14	15	13	21	12	20	12	16	19
San Francisco City/County	9	<4	<4	<4	<4	0	<4	<4	<4	<4	<4	0	<4	<4	<4

Age-Adjusted Cancer Incidence Rates^a

By SEER Location and Year of Diagnosis, 1975-2007

All Races, Males, Ages 0-19

Year of Diagnosis

SEER Location	1975- 1979	1980- 1981	1982- 1983	1984- 1985	1986- 1987	1988- 1989	1990- 1991	1992- 1993	1994- 1995	1996- 1997	1998- 1999	2000- 2001	2002- 2003	2004- 2005	2006- 2007
SEER 9 ^b	1.2	1.3	1.6	1.3	1.4	1.3	1.5	1.3	1.6	1.4	1.4	1.5	1.6	1.4	1.3
SEER 9 except SF-Oakland	1.2	1.3	1.6	1.4	1.4	1.3	1.5	1.2	1.7	1.3	1.4	1.5	1.7	1.3	1.2
San Francisco- Oakland SMSA ^c	1.4	1.0	1.5	1.0	1.6	0.9	1.5	1.6	1.3	2.1	1.2	1.9	1.2	1.6	1.8
San Francisco City/County	2.3	-	-	-	-	0.0	-	-	-	-	-	0.0	-	-	-

^a Rates are per 100,000 males aged 0-19 and are age-adjusted to the 2000 US Std Population (19 age groups - Census P25-1130).

^b The SEER 9 areas are San Francisco-Oakland SMSA, Connecticut, Detroit, Hawaii, Iowa, New Mexico, Seattle, Utah and Atlanta.

^c The San Francisco-Oakland SMSA represents 15% of all persons in the SEER areas. For this age group, all SEER areas may not be generalizable to the United States for Non-Hodgkin Lymphoma.

- Statistic not shown. Rate based on less than 4 cases for the time interval.

Table 19.14

Non-Hodgkin Lymphoma

Number of Cases

By SEER Location and Year of Diagnosis, 1975-2007

All Races, Males, Ages 20-54

SEER Location	Year of Diagnosis														
	1975- 1979	1980- 1981	1982- 1983	1984- 1985	1986- 1987	1988- 1989	1990- 1991	1992- 1993	1994- 1995	1996- 1997	1998- 1999	2000- 2001	2002- 2003	2004- 2005	2006- 2007
SEER 9 ^b	1,464	687	723	955	1,210	1,409	1,763	1,832	2,083	1,753	1,605	1,680	1,603	1,710	1,610
SEER 9 except SF-Oakland	1,207	562	588	727	826	919	1,192	1,295	1,478	1,310	1,267	1,313	1,294	1,398	1,345
San Francisco- Oakland SMSA ^c	257	125	135	228	384	490	571	537	605	443	338	367	309	312	265
San Francisco City/County	58	29	34	105	215	288	333	303	316	223	105	114	110	111	84

Age-Adjusted Cancer Incidence Rates^a

By SEER Location and Year of Diagnosis, 1975-2007

All Races, Males, Ages 20-54

SEER Location	Year of Diagnosis														
	1975- 1979	1980- 1981	1982- 1983	1984- 1985	1986- 1987	1988- 1989	1990- 1991	1992- 1993	1994- 1995	1996- 1997	1998- 1999	2000- 2001	2002- 2003	2004- 2005	2006- 2007
SEER 9 ^b	6.9	7.9	8.2	10.4	12.4	13.5	15.9	15.6	16.9	13.7	12.1	12.2	11.4	12.0	11.0
SEER 9 except SF-Oakland	6.9	7.8	8.1	9.7	10.3	10.8	13.1	13.4	14.4	12.2	11.5	11.4	11.0	11.7	10.9
San Francisco- Oakland SMSA ^c	7.0	8.5	8.9	13.9	22.6	26.4	29.5	26.7	29.7	21.2	15.5	16.3	13.5	13.7	11.5
San Francisco City/County	6.7	8.8	9.4	27.2	56.5	71.5	81.3	72.3	74.2	50.5	23.0	24.7	22.9	23.2	17.2

^a Rates are per 100,000 males aged 20-54 and are age-adjusted to the 2000 US Std Population (19 age groups - Census P25-1130).

^b The SEER 9 areas are San Francisco-Oakland SMSA, Connecticut, Detroit, Hawaii, Iowa, New Mexico, Seattle, Utah and Atlanta.

^c The San Francisco-Oakland SMSA represents 15% of all persons in the SEER areas. For this age group, all SEER areas may not be generalizable to the United States for Non-Hodgkin Lymphoma.

- Statistic not shown. Rate based on less than 4 cases for the time interval.

Table 19.15

Non-Hodgkin Lymphoma

Number of Cases

By SEER Location and Year of Diagnosis, 1975-2007

All Races, Males, Ages 55+

Year of Diagnosis

SEER Location	1975- 1979	1980- 1981	1982- 1983	1984- 1985	1986- 1987	1988- 1989	1990- 1991	1992- 1993	1994- 1995	1996- 1997	1998- 1999	2000- 2001	2002- 2003	2004- 2005	2006- 2007
SEER 9 ^b	3,535	1,731	1,871	2,130	2,322	2,494	2,705	2,806	3,115	3,383	3,537	3,721	3,991	4,338	4,462
SEER 9 except SF-Oakland	2,885	1,447	1,582	1,792	1,912	2,090	2,227	2,325	2,568	2,838	2,991	3,064	3,369	3,663	3,783
San Francisco-Oakland SMSA ^c	650	284	289	338	410	404	478	481	547	545	546	657	622	675	679
San Francisco City/County	178	65	88	104	109	105	132	106	130	126	106	141	107	166	124

Age-Adjusted Cancer Incidence Rates^a

By SEER Location and Year of Diagnosis, 1975-2007

All Races, Males, Ages 55+

Year of Diagnosis

SEER Location	1975- 1979	1980- 1981	1982- 1983	1984- 1985	1986- 1987	1988- 1989	1990- 1991	1992- 1993	1994- 1995	1996- 1997	1998- 1999	2000- 2001	2002- 2003	2004- 2005	2006- 2007
SEER 9 ^b	45.1	52.2	53.9	59.7	63.3	67.2	70.1	70.5	76.1	80.0	80.8	82.4	84.5	87.8	85.6
SEER 9 except SF-Oakland	44.0	52.1	54.3	60.1	62.0	66.7	68.8	69.2	74.3	79.6	81.0	80.5	84.6	88.1	86.2
San Francisco-Oakland SMSA ^c	50.9	52.7	52.0	57.5	70.1	70.1	77.3	77.9	85.4	82.1	79.5	92.4	83.4	85.9	82.5
San Francisco City/County	48.2	44.6	59.8	72.7	73.9	75.7	93.3	74.7	91.4	87.2	72.7	92.7	66.9	98.8	67.9

^a Rates are per 100,000 males aged 55+ and are age-adjusted to the 2000 US Std Population (19 age groups - Census P25-1130).^b The SEER 9 areas are San Francisco-Oakland SMSA, Connecticut, Detroit, Hawaii, Iowa, New Mexico, Seattle, Utah and Atlanta.^c The San Francisco-Oakland SMSA represents 15% of all persons in the SEER areas. For this age group, all SEER areas may not be generalizable to the United States for Non-Hodgkin Lymphoma.

- Statistic not shown. Rate based on less than 4 cases for the time interval.

Table 19.16
Non-Hodgkin Lymphoma

Risk of Being Diagnosed With Cancer in 10, 20 and 30 Years,
Lifetime Risk of Being Diagnosed with Cancer Given Alive and Cancer-Free at Current Age, and
Lifetime Risk of Dying from Cancer Given Alive at Current Age
Both Sexes, 2005-2007 By Race/Ethnicity

Race/ Ethnicity	Current Age	Risk of Being Diagnosed with Cancer				Risk of Dying from Cancer	Race/ Ethnicity	Current Age	Risk of Being Diagnosed with Cancer				Risk of Dying from Cancer
		+10 yrs	+20 yrs	+30 yrs	Ever				+10 yrs	+20 yrs	+30 yrs	Ever	
All Races	0	0.01	0.02	0.05	2.10	0.80	Asian/ Pacific Islander	0	0.01	0.02	0.04	1.68	0.67
	10	0.02	0.04	0.10	2.12	0.81		10	0.01	0.03	0.07	1.69	0.67
	20	0.03	0.09	0.21	2.11	0.81		20	0.02	0.06	0.14	1.69	0.67
	30	0.06	0.18	0.43	2.10	0.82		30	0.04	0.12	0.27	1.67	0.67
	40	0.13	0.38	0.85	2.07	0.82		40	0.08	0.24	0.55	1.65	0.67
	50	0.26	0.74	1.39	2.00	0.82		50	0.16	0.48	0.97	1.59	0.67
	60	0.51	1.21	1.73	1.85	0.82		60	0.33	0.84	1.29	1.48	0.65
	70	0.80	1.39	-	1.53	0.77		70	0.55	1.04	-	1.25	0.60
80	0.83	-	-	1.03	0.62	80	0.59	-	-	0.85	0.46		
White	0	0.01	0.02	0.05	2.21	0.85	American Indian/ Alaska Native ^a	0	0.01	0.02	0.04	1.22	0.51
	10	0.02	0.04	0.10	2.23	0.86		10	0.01	0.03	0.08	1.24	0.52
	20	0.03	0.09	0.21	2.22	0.86		20	0.02	0.07	0.14	1.23	0.52
	30	0.06	0.18	0.44	2.21	0.86		30	0.05	0.11	0.25	1.23	0.53
	40	0.13	0.39	0.89	2.18	0.87		40	0.07	0.21	0.51	1.22	0.54
	50	0.27	0.78	1.48	2.11	0.87		50	0.15	0.46	0.77	1.20	0.55
	60	0.54	1.28	1.83	1.96	0.86		60	0.34	0.68	1.06	1.14	0.54
	70	0.85	1.47	-	1.62	0.81		70	0.40	0.85	-	0.93	0.49
80	0.88	-	-	1.07	0.65	80	0.63	-	-	0.74	0.43		
Black	0	0.01	0.02	0.05	1.20	0.44	Hispanic ^b	0	0.01	0.02	0.04	1.99	0.73
	10	0.02	0.05	0.12	1.22	0.45		10	0.01	0.04	0.08	2.00	0.73
	20	0.03	0.10	0.23	1.21	0.45		20	0.02	0.07	0.17	2.00	0.74
	30	0.07	0.20	0.43	1.20	0.45		30	0.05	0.15	0.36	1.99	0.74
	40	0.13	0.36	0.65	1.16	0.45		40	0.11	0.32	0.74	1.97	0.74
	50	0.24	0.55	0.85	1.08	0.44		50	0.22	0.64	1.22	1.90	0.74
	60	0.34	0.68	0.89	0.93	0.42		60	0.44	1.05	1.56	1.77	0.72
	70	0.41	0.68	-	0.73	0.37		70	0.68	1.24	-	1.48	0.66
80	0.40	-	-	0.49	0.29	80	0.73	-	-	1.04	0.51		

Devcan Version 6.5.0, June 2010, National Cancer Institute (<http://srab.cancer.gov/devcan/>).

Source: Incidence data are from the SEER 17 areas (San Francisco, Connecticut, Detroit, Hawaii, Iowa, New Mexico, Seattle, Utah, Atlanta, San Jose-Monterey, Los Angeles, Alaska Native Registry, Rural Georgia, California excluding SF/SJM/LA, Kentucky, Louisiana and New Jersey). Mortality data are from the NCHS public use data file for the total US.

^a Underlying incidence and mortality data for American Indian/Alaska Native are based on the CHSDA (Contract Health Service Delivery Area) counties.

^b Hispanic is not mutually exclusive from whites, blacks, Asian/Pacific Islanders, and American Indians/Alaska Natives.

Underlying incidence data for Hispanics are based on NHIA and exclude cases from the Alaska Native Registry.

Underlying mortality data for Hispanics exclude deaths from the District of Columbia, Minnesota, New Hampshire and North Dakota.

- Statistic could not be calculated.

A percent of 0.00 represents a value that is below 0.005.

Table 19.17
Non-Hodgkin Lymphoma

Risk of Being Diagnosed With Cancer in 10, 20 and 30 Years,
Lifetime Risk of Being Diagnosed with Cancer Given Alive and Cancer-Free at Current Age, and
Lifetime Risk of Dying from Cancer Given Alive at Current Age
Males, 2005-2007 By Race/Ethnicity

Race/ Ethnicity	Current Age	Risk of Being Diagnosed with Cancer				Risk of Dying from Cancer	Race/ Ethnicity	Current Age	Risk of Being Diagnosed with Cancer				Risk of Dying from Cancer
		+10 yrs	+20 yrs	+30 yrs	Ever				+10 yrs	+20 yrs	+30 yrs	Ever	
All Races	0	0.01	0.03	0.06	2.30	0.88	Asian/ Pacific Islander	0	0.01	0.02	0.04	1.97	0.79
	10	0.02	0.05	0.12	2.32	0.89		10	0.01	0.04	0.07	1.98	0.80
	20	0.03	0.10	0.25	2.32	0.90		20	0.02	0.06	0.15	1.98	0.80
	30	0.07	0.22	0.50	2.32	0.90		30	0.04	0.12	0.30	1.97	0.80
	40	0.15	0.44	0.97	2.28	0.91		40	0.09	0.27	0.65	1.95	0.80
	50	0.30	0.85	1.57	2.21	0.92		50	0.18	0.57	1.17	1.89	0.79
	60	0.60	1.38	1.94	2.06	0.91		60	0.41	1.03	1.57	1.79	0.77
	70	0.92	1.58	-	1.73	0.87		70	0.69	1.29	-	1.52	0.73
80	0.99	-	-	1.21	0.72	80	0.77	-	-	1.08	0.59		
White	0	0.01	0.03	0.06	2.43	0.93	American Indian/ Alaska Native ^a	0	0.00	0.01	0.03	1.35	0.53
	10	0.02	0.05	0.12	2.45	0.94		10	0.01	0.03	0.09	1.36	0.54
	20	0.03	0.10	0.25	2.44	0.95		20	0.03	0.08	0.16	1.37	0.55
	30	0.07	0.22	0.52	2.44	0.95		30	0.06	0.14	0.27	1.38	0.56
	40	0.16	0.46	1.02	2.41	0.96		40	0.08	0.22	0.64	1.37	0.58
	50	0.31	0.89	1.66	2.33	0.97		50	0.15	0.60	0.94	1.37	0.60
	60	0.63	1.46	2.05	2.17	0.97		60	0.49	0.87	1.24	1.34	0.62
	70	0.98	1.67	-	1.82	0.92		70	0.45	0.91	-	1.02	0.59
80	1.04	-	-	1.26	0.75	80	0.66	-	-	0.83	0.60		
Black	0	0.01	0.03	0.06	1.25	0.47	Hispanic ^b	0	0.01	0.02	0.05	2.03	0.79
	10	0.02	0.06	0.15	1.28	0.48		10	0.02	0.04	0.10	2.04	0.80
	20	0.04	0.13	0.28	1.27	0.49		20	0.03	0.08	0.21	2.04	0.80
	30	0.09	0.24	0.51	1.26	0.49		30	0.05	0.18	0.42	2.04	0.80
	40	0.15	0.43	0.75	1.20	0.49		40	0.13	0.38	0.82	2.01	0.81
	50	0.30	0.63	0.93	1.11	0.48		50	0.25	0.71	1.30	1.94	0.81
	60	0.39	0.73	0.92	0.94	0.45		60	0.49	1.12	1.62	1.80	0.80
	70	0.46	0.70	-	0.73	0.39		70	0.73	1.30	-	1.50	0.75
80	0.42	-	-	0.48	0.31	80	0.79	-	-	1.07	0.59		

Devcan Version 6.5.0, June 2010, National Cancer Institute (<http://srab.cancer.gov/devcan/>).

Source: Incidence data are from the SEER 17 areas (San Francisco, Connecticut, Detroit, Hawaii, Iowa, New Mexico, Seattle, Utah, Atlanta, San Jose-Monterey, Los Angeles, Alaska Native Registry, Rural Georgia, California excluding SF/SJM/LA, Kentucky, Louisiana and New Jersey). Mortality data are from the NCHS public use data file for the total US.

^a Underlying incidence and mortality data for American Indian/Alaska Native are based on the CHSDA (Contract Health Service Delivery Area) counties.

^b Hispanic is not mutually exclusive from whites, blacks, Asian/Pacific Islanders, and American Indians/Alaska Natives.

Underlying incidence data for Hispanics are based on NHIA and exclude cases from the Alaska Native Registry.

Underlying mortality data for Hispanics exclude deaths from the District of Columbia, Minnesota, New Hampshire and North Dakota.

- Statistic could not be calculated.

A percent of 0.00 represents a value that is below 0.005.

Table 19.18
Non-Hodgkin Lymphoma

Risk of Being Diagnosed With Cancer in 10, 20 and 30 Years,
Lifetime Risk of Being Diagnosed with Cancer Given Alive and Cancer-Free at Current Age, and
Lifetime Risk of Dying from Cancer Given Alive at Current Age
Females, 2005-2007 By Race/Ethnicity

Race/ Ethnicity	Current Age	Risk of Being Diagnosed with Cancer				Risk of Dying from Cancer	Race/ Ethnicity	Current Age	Risk of Being Diagnosed with Cancer				Risk of Dying from Cancer
		+10 yrs	+20 yrs	+30 yrs	Ever				+10 yrs	+20 yrs	+30 yrs	Ever	
All Races	0	0.00	0.02	0.04	1.92	0.73	Asian/ Pacific Islander	0	0.01	0.01	0.03	1.44	0.57
	10	0.01	0.03	0.08	1.93	0.74		10	0.01	0.03	0.06	1.44	0.57
	20	0.02	0.07	0.17	1.93	0.74		20	0.02	0.05	0.12	1.44	0.57
	30	0.05	0.15	0.36	1.92	0.74		30	0.04	0.11	0.24	1.42	0.57
	40	0.10	0.31	0.72	1.89	0.74		40	0.07	0.21	0.46	1.39	0.57
	50	0.22	0.64	1.23	1.82	0.75		50	0.14	0.40	0.81	1.34	0.56
	60	0.44	1.06	1.56	1.68	0.74		60	0.27	0.69	1.06	1.23	0.55
	70	0.69	1.25	-	1.39	0.70		70	0.45	0.84	-	1.03	0.50
80	0.73	-	-	0.92	0.57	80	0.46	-	-	0.68	0.36		
White	0	0.00	0.02	0.04	2.02	0.78	American Indian/ Alaska Native ^a	0	0.01	0.02	0.04	1.11	0.52
	10	0.01	0.03	0.08	2.04	0.78		10	0.02	0.04	0.07	1.12	0.53
	20	0.02	0.07	0.17	2.03	0.78		20	0.02	0.06	0.11	1.11	0.53
	30	0.05	0.14	0.37	2.02	0.79		30	0.03	0.09	0.23	1.10	0.53
	40	0.10	0.32	0.76	1.99	0.79		40	0.06	0.20	0.38	1.08	0.54
	50	0.23	0.67	1.31	1.93	0.79		50	0.14	0.33	0.62	1.06	0.54
	60	0.46	1.13	1.65	1.78	0.78		60	0.20	0.51	0.91	0.97	0.51
	70	0.74	1.33	-	1.46	0.74		70	0.35	0.81	-	0.88	0.45
80	0.77	-	-	0.96	0.60	80	0.61	-	-	0.70	0.35		
Black	0	0.00	0.02	0.04	1.16	0.41	Hispanic ^b	0	0.00	0.01	0.03	1.95	0.68
	10	0.01	0.03	0.09	1.18	0.42		10	0.01	0.03	0.06	1.96	0.69
	20	0.02	0.08	0.18	1.17	0.42		20	0.02	0.05	0.13	1.96	0.69
	30	0.06	0.16	0.35	1.15	0.42		30	0.04	0.12	0.30	1.95	0.69
	40	0.11	0.30	0.57	1.12	0.41		40	0.08	0.27	0.66	1.93	0.69
	50	0.20	0.48	0.78	1.05	0.41		50	0.19	0.58	1.15	1.87	0.68
	60	0.31	0.63	0.86	0.93	0.39		60	0.41	1.00	1.51	1.75	0.66
	70	0.38	0.66	-	0.73	0.35		70	0.64	1.19	-	1.46	0.60
80	0.40	-	-	0.50	0.28	80	0.69	-	-	1.02	0.46		

Devcan Version 6.5.0, June 2010, National Cancer Institute (<http://srab.cancer.gov/devcan/>).

Source: Incidence data are from the SEER 17 areas (San Francisco, Connecticut, Detroit, Hawaii, Iowa, New Mexico, Seattle, Utah, Atlanta, San Jose-Monterey, Los Angeles, Alaska Native Registry, Rural Georgia, California excluding SF/SJM/LA, Kentucky, Louisiana and New Jersey). Mortality data are from the NCHS public use data file for the total US.

^a Underlying incidence and mortality data for American Indian/Alaska Native are based on the CHSDA (Contract Health Service Delivery Area) counties.

^b Hispanic is not mutually exclusive from whites, blacks, Asian/Pacific Islanders, and American Indians/Alaska Natives.

Underlying incidence data for Hispanics are based on NHIA and exclude cases from the Alaska Native Registry.

Underlying mortality data for Hispanics exclude deaths from the District of Columbia, Minnesota, New Hampshire and North Dakota.

- Statistic could not be calculated.

A percent of 0.00 represents a value that is below 0.005.

Table 19.19
Non-Hodgkin Lymphoma

SEER Incidence and U.S. Mortality
Age-Adjusted Rates and Trends^a
By Race/Ethnicity and Sex

SEER Incidence	SEER 17 Areas ^b			SEER 13 Areas ^b			SEER 9 Areas ^b		
	Rate 2003-2007			Trend 1998-2007 ^c			Trend 1998-2007 ^d		
	Rate per 100,000 persons			AAPC (%)			AAPC (%)		
RACE/ETHNICITY	Total	Males	Females	Total	Males	Females	Total	Males	Females
All Races	19.6	23.6	16.5	0.3*	-0.1	0.2	0.5*	0.2	0.3
White	20.5	24.6	17.2	0.3*	0.0	0.3	0.5*	0.3*	1.0*
White Hispanic ^e	16.8	19.2	14.8	-0.3	-0.8*	0.5	-	-	-
White Non-Hispanic ^e	21.1	25.5	17.6	0.5*	0.2	0.4	-	-	-
Black	14.7	17.8	12.3	0.5	-0.5	2.0*	-0.2	-0.8	2.5*
Asian/Pacific Islander	12.9	15.7	10.8	-0.2	-0.4	0.2	-	-	-
Amer Ind/Alaska Nat ^f	11.4	12.5	10.6	2.6	-	-	-	-	-
Hispanic ^e	16.5	18.7	14.5	-0.1	-0.6	0.6*	-	-	-
<u>U.S. Mortality^g</u>									
	Rate 2003-2007			Trend 1998-2007 ^h					
	Rate per 100,000 persons			AAPC (%)					
RACE/ETHNICITY	Total	Males	Females	Total	Males	Females			
All Races	6.9	8.7	5.5	-3.2*	-3.0*	-3.5*			
White	7.2	9.1	5.7	-3.2*	-2.9*	-3.5*			
White Hispanic ^e	5.5	6.6	4.6	-3.1*	-3.3*	-2.8*			
White Non-Hispanic ^e	7.3	9.2	5.8	-3.0*	-2.7*	-3.5*			
Black	4.8	6.0	3.9	-2.9*	-3.3*	-2.5*			
Asian/Pacific Islander	4.4	5.5	3.5	-2.2*	-2.3*	-1.8*			
Amer Ind/Alaska Nat									
Total U.S.	3.8	4.3	3.4	-0.9	-1.3	-0.6			
CHSDA Counties	4.9	5.3	4.6	0.3	-1.0	1.2			
Non-CHSDA Counties	2.4	3.2	1.8	-3.0	-	-			
Hispanic ^e	5.3	6.3	4.4	-3.2*	-3.4*	-2.8*			

The AAPC is the Average Annual Percent Change over the time interval. The AAPCs are calculated by the Joinpoint Regression Program Version 3.4.3, April 2010, National Cancer Institute.

- Statistic not shown. Rate based on less than 16 cases for the time interval.

Trend based on less than 10 cases for at least one year within the time interval.

a Rates are age-adjusted to the 2000 US Std Population (19 age groups - Census P25-1130). Trends

b are based on rates age-adjusted to the 2000 US Std Population (19 age groups - Census P25-1130).

The SEER 9 areas are San Francisco, Connecticut, Detroit, Hawaii, Iowa, New Mexico, Seattle, Utah and Atlanta.

The SEER 13 areas comprise the SEER 9 areas plus San Jose-Monterey, Los Angeles, the Alaska Native Registry and Rural Georgia.

The SEER 17 areas comprise the SEER 13 areas plus California excluding SF/SJM/LA, Kentucky, Louisiana and New Jersey.

c The 1998-2007 AAPC estimates are based on a Joinpoint analysis with up to 2 Joinpoints over diagnosis years 1992-2007.

d The 1998-2007 AAPC estimates are based on a Joinpoint analysis with up to 4 Joinpoints over diagnosis years 1975-2007.

e Hispanic and Non-Hispanic are not mutually exclusive from whites, blacks, Asian/Pacific Islanders, and American Indians/Alaska Natives. Incidence data for Hispanics and Non-Hispanics are based on NHIA and exclude cases from the Alaska Native Registry. The 2003-2007 Hispanic and Non-Hispanic death rates exclude deaths from the District of Columbia, New Hampshire, and North Dakota. The 1998-2007 Hispanic and Non-Hispanic mortality trends exclude deaths from Connecticut, the District of Columbia, Maine, Maryland, Minnesota, New Hampshire, New York, North Dakota, Oklahoma and Vermont.

f Incidence data for American Indian/Alaska Native are based on the CHSDA(Contract Health Service Delivery Area) counties.

g US Mortality Files, National Center for Health Statistics, CDC.

h The 1998-2007 mortality AAPCs are based on a Joinpoint analysis using years of death 1992-2007.

* The APC is significantly different from zero (p<.05).

Table 19.20
Non-Hodgkin Lymphoma

Age-Adjusted SEER Incidence Rates^a
By Registry, Race and Sex

	All Races			Whites			Blacks		
	Total	Males	Females	Total	Males	Females	Total	Males	Females
<u>SEER Incidence Rates^a, 2003-2007</u>									
Atlanta & Rural Georgia	17.51	21.70	14.41	18.83	22.40	16.17	14.64	20.42	10.71
Atlanta	17.57	21.96	14.40	18.77	22.53	16.06	14.91	20.91	10.89
Rural Georgia	16.98	19.72	13.97	20.28	22.20	17.48	10.92	14.78	-
California	18.63	22.48	15.45	19.46	23.53	16.04	13.70	15.94	11.66
Greater Bay Area	19.85	24.65	15.90	21.73	27.11	17.20	14.86	17.61	12.35
San Francisco-Oakland	19.62	24.87	15.36	21.70	27.48	16.81	15.15	17.67	12.99
San Jose-Monterey	20.42	24.34	17.09	21.89	26.53	17.99	13.76	17.37	-
Los Angeles	17.92	21.27	15.17	19.10	22.77	16.07	14.03	16.36	12.04
Greater California	18.54	22.26	15.44	18.94	22.79	15.69	12.77	14.90	10.79
Connecticut	21.45	26.02	18.05	21.73	26.19	18.44	17.00	20.43	14.21
Detroit	21.85	25.53	19.12	23.12	26.97	20.18	16.71	19.69	14.65
Hawaii	15.55	19.38	12.43	19.06	24.60	13.86	-	-	-
Iowa	21.18	25.20	18.06	21.08	25.03	18.03	21.02	29.82	13.17
Kentucky	19.83	23.48	17.06	20.13	23.69	17.42	13.33	17.59	10.45
Louisiana	19.66	23.51	16.60	21.49	25.35	18.38	14.11	17.47	11.52
New Jersey	21.08	25.57	17.65	21.89	26.50	18.34	15.10	17.84	12.99
New Mexico	16.15	18.35	14.34	16.82	19.37	14.69	12.10	-	-
Seattle-Puget Sound	23.35	28.52	19.23	24.14	29.40	19.89	17.27	18.80	15.75
Utah	19.16	22.61	16.08	19.43	22.90	16.33	21.68	-	-
9 SEER Areas ^b	20.33	24.62	16.97	21.40	25.77	17.93	15.88	19.59	13.08
11 SEER Areas ^b	19.79	23.86	16.56	20.94	25.19	17.52	15.42	18.76	12.81
13 SEER Areas ^b	19.77	23.83	16.55	20.94	25.18	17.52	15.36	18.70	12.74
17 SEER Areas ^b	19.63	23.61	16.46	20.52	24.62	17.20	14.73	17.84	12.28

^a Rates are per 100,000 and are age-adjusted to the 2000 US Std Population (19 age groups - Census P25-1130)

^b The SEER 9 areas are San Francisco, Connecticut, Detroit, Hawaii, Iowa, New Mexico, Seattle, Utah and Atlanta.

The SEER 11 areas comprise the SEER 9 areas plus San Jose-Monterey and Los Angeles.

The SEER 13 areas comprise the SEER 11 areas plus the Alaska Native Registry and Rural Georgia.

The SEER 17 areas comprise the SEER 13 areas plus California excluding SF/SJM/LA, Kentucky, Louisiana and New Jersey.

- Statistic not shown. Rate based on less than 16 cases for the time interval.

Table 19.21
Non-Hodgkin Lymphoma

Age-Adjusted SEER Death Rates^a
By Registry, Race and Sex

	All Races			Whites			Blacks		
	Total	Males	Females	Total	Males	Females	Total	Males	Females
<u>SEER Death Rates^a, 2003-2007</u>									
Atlanta & Rural Georgia	5.86	7.29	4.91	6.48	7.74	5.62	4.04	6.18	2.76
Atlanta	5.87	7.38	4.89	6.47	7.78	5.58	4.05	6.40	2.72
Rural Georgia	6.21	6.91	5.40	7.21	-	6.52	-	-	-
California	6.55	8.34	5.19	6.92	8.86	5.43	5.34	6.05	4.60
Greater Bay Area	6.87	8.98	5.35	7.51	9.86	5.81	5.80	7.11	4.70
San Francisco-Oakland	6.86	9.25	5.16	7.54	10.23	5.61	5.92	6.96	5.01
San Jose-Monterey	6.87	8.41	5.73	7.41	9.14	6.15	-	-	-
Los Angeles	6.23	7.78	5.06	6.81	8.63	5.43	5.01	5.62	4.36
Greater California	6.59	8.36	5.20	6.80	8.67	5.34	5.42	5.82	4.83
Connecticut	6.83	8.77	5.47	6.96	8.93	5.58	4.23	4.77	3.69
Detroit	7.23	8.98	6.03	7.78	9.53	6.59	5.06	6.77	3.85
Hawaii	5.74	7.50	4.31	6.82	9.20	4.63	-	-	-
Iowa	7.43	9.53	5.90	7.51	9.63	5.96	-	-	-
Kentucky	7.49	9.61	5.98	7.68	9.84	6.16	4.36	5.49	3.45
Louisiana	7.31	9.35	5.83	7.92	10.22	6.27	5.44	6.44	4.63
New Jersey	7.10	8.94	5.77	7.47	9.39	6.08	4.70	5.80	3.81
New Mexico	5.99	7.42	4.86	6.14	7.73	4.87	-	-	-
Seattle-Puget Sound	7.27	9.36	5.66	7.53	9.73	5.82	5.97	7.37	-
Utah	6.57	8.11	5.21	6.65	8.20	5.27	-	-	-
9 SEER Areas ^b	6.82	8.74	5.41	7.20	9.20	5.72	4.81	6.31	3.74
11 SEER Areas ^b	6.70	8.51	5.35	7.14	9.08	5.69	4.88	6.17	3.90
13 SEER Areas ^b	6.68	8.49	5.35	7.13	9.07	5.69	4.86	6.14	3.88
17 SEER Areas ^b	6.79	8.62	5.43	7.17	9.11	5.71	4.97	6.08	4.07
Total U.S.	6.89	8.72	5.52	7.17	9.06	5.74	4.83	6.04	3.93

^a US Mortality Files, National Center for Health Statistics, Centers for Disease Control and Prevention.
Rates are per 100,000 and are age-adjusted to the 2000 US Std Population (19 age groups - Census P25-1130).

^b The SEER 9 areas are San Francisco, Connecticut, Detroit, Hawaii, Iowa, New Mexico, Seattle, Utah and Atlanta.
The SEER 11 areas comprise the SEER 9 areas plus San Jose-Monterey and Los Angeles.
The SEER 13 areas comprise the SEER 11 areas plus the Alaska Native Registry and Rural Georgia.
The SEER 17 areas comprise the SEER 13 areas plus California excluding SF/SJM/LA, Kentucky, Louisiana and New Jersey.
- Statistic not shown. Rate based on less than 16 cases for the time interval.

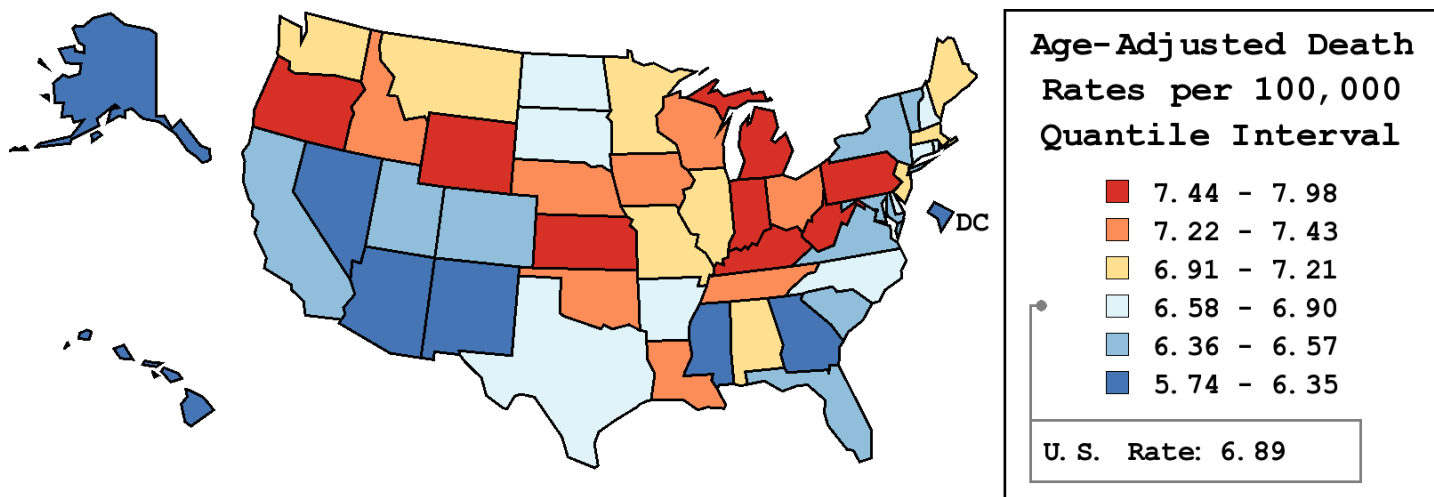
Table 19.22
Non-Hodgkin Lymphoma

Age-Adjusted Cancer Death^a Rates By State, All Races, 2003-2007

Males and Females

State	Rate	SE	Rank	PD
TOTAL U.S.	6.89	0.02		
High Five States				
West Virginia	7.98 ^b	0.27	(01)	15.90 ^c
Michigan	7.70 ^b	0.12	(02)	11.88
Indiana	7.68 ^b	0.16	(03)	11.49
Oregon	7.63 ^b	0.20	(04)	10.81
Pennsylvania	7.61 ^b	0.10	(05)	10.48
Low Five States				
Nevada	6.16	0.24	(47)	-10.47
D.C.	6.11	0.46	(48)	-11.25
New Mexico	5.99 ^b	0.25	(49)	-12.99
Alaska	5.87	0.58	(50)	-14.77
Hawaii	5.74 ^b	0.28	(51)	-16.67 ^c

State	Rate	SE	Rank	PD	State	Rate	SE	Rank	PD
Alabama	6.92	0.17	(25)	0.46	Montana	7.20	0.37	(18)	4.62
Alaska	5.87	0.58	(50)	-14.77	Nebraska	7.39	0.28	(13)	7.26
Arizona	6.21 ^b	0.14	(46)	-9.79	Nevada	6.16	0.24	(47)	-10.47
Arkansas	6.86	0.21	(27)	-0.31	New Hampshire	6.77	0.32	(29)	-1.63
California	6.55 ^b	0.06	(37)	-4.90	New Jersey	7.10	0.12	(22)	3.11
Colorado	6.43	0.18	(40)	-6.57	New Mexico	5.99 ^b	0.25	(49)	-12.99
Connecticut	6.83	0.19	(28)	-0.82	New York	6.36 ^b	0.08	(43)	-7.64
Delaware	6.75	0.39	(30)	-2.04	North Carolina	6.66	0.12	(32)	-3.28
D.C.	6.11	0.46	(48)	-11.25	North Dakota	6.66	0.42	(33)	-3.32
Florida	6.55 ^b	0.08	(36)	-4.87	Ohio	7.42 ^b	0.11	(12)	7.73
Georgia	6.32 ^b	0.13	(45)	-8.28	Oklahoma	7.38	0.20	(14)	7.11
Hawaii	5.74 ^b	0.28	(51)	-16.67 ^c	Oregon	7.63 ^b	0.20	(04)	10.81
Idaho	7.26	0.33	(16)	5.44	Pennsylvania	7.61 ^b	0.10	(05)	10.48
Illinois	7.12	0.11	(21)	3.39	Rhode Island	6.74	0.33	(31)	-2.06
Indiana	7.68 ^b	0.16	(03)	11.49	South Carolina	6.38	0.17	(42)	-7.41
Iowa	7.43	0.21	(10)	7.91	South Dakota	6.90	0.39	(26)	0.19
Kansas	7.51	0.23	(06)	9.03	Tennessee	7.43	0.16	(11)	7.87
Kentucky	7.49	0.19	(07)	8.73	Texas	6.59 ^b	0.08	(34)	-4.32
Louisiana	7.31	0.19	(15)	6.10	Utah	6.57	0.27	(35)	-4.52
Maine	7.18	0.31	(20)	4.34	Vermont	6.52	0.44	(38)	-5.32
Maryland	6.38	0.15	(41)	-7.40	Virginia	6.51	0.14	(39)	-5.47
Massachusetts	6.96	0.14	(23)	1.13	Washington	7.21	0.15	(17)	4.75
Michigan	7.70 ^b	0.12	(02)	11.88	West Virginia	7.98 ^b	0.27	(01)	15.90 ^c
Minnesota	7.19	0.17	(19)	4.44	Wisconsin	7.43	0.16	(09)	7.97
Mississippi	6.35	0.21	(44)	-7.78	Wyoming	7.48	0.54	(08)	8.65
Missouri	6.94	0.15	(24)	0.78					



^a US Mortality Files, National Center for Health Statistics, Centers for Disease Control and Prevention. Rates are per 100,000 and are age-adjusted to the 2000 US Std Population (19 age groups - Census P25-1130).
^b Difference between state rate and total U.S. rate is statistically significant ($p \leq .0002$).
^c Absolute percent difference between state rate and total U.S. rate is 15% or more.
SE Standard error of the rate.
PD Percent difference between state rate and total U.S. rate.

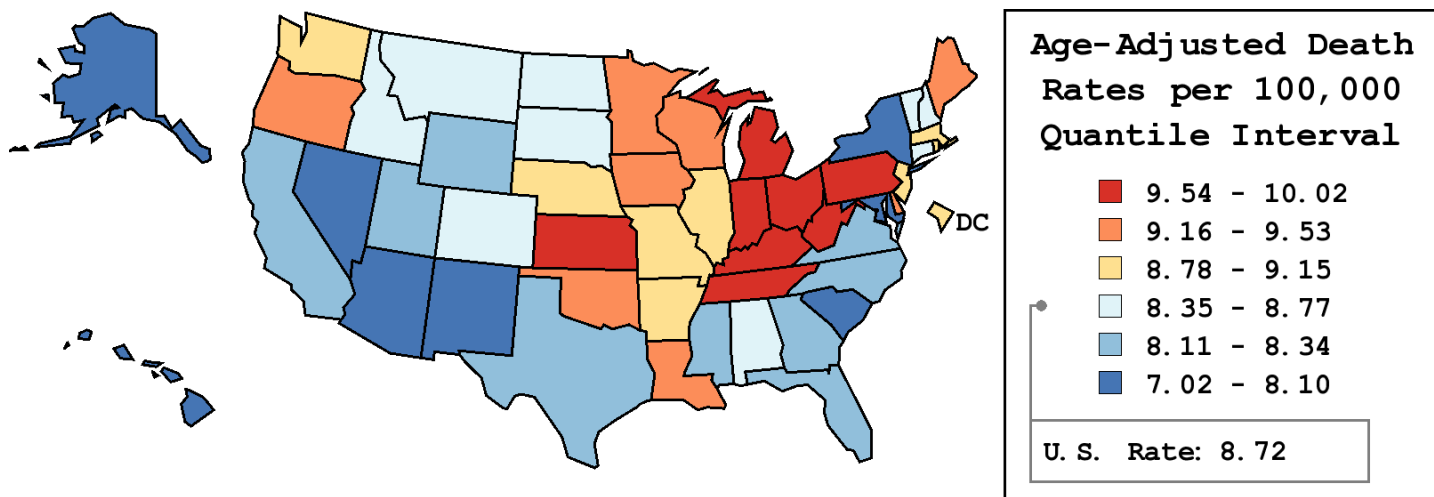
Table 19.23
Non-Hodgkin Lymphoma

Age-Adjusted Cancer Death^a Rates By State, All Races, 2003-2007

Males

State	Rate	SE	Rank	PD
TOTAL U.S.	8.72	0.04		
High Five States				
West Virginia	0.47	(01)	14.86	
Indiana ^b	0.28	(02)	14.74	
Kansas ^b	0.40	(03)	10.71	
Michigan	0.21	(04)	10.61	
Pennsylvania	0.18	(05)	10.25	
Low Five States				
Arizona ^b	0.24	(47)	-11.15	
Hawaii ^b	0.49	(48)	-14.04	
New Mexico	0.42	(49)	-14.92	
Alaska ^b	1.02	(50)	-15.57 ^c	
Nevada ^b	0.38	(51)	-19.46 ^c	

State	Rate	SE	Rank	PD	State	Rate	SE	Rank	PD
Alabama	8.60	0.30	(30)	-1.37	Montana	8.65	0.62	(29)	-0.80
Alaska	7.36	1.02	(50)	-15.57 ^c	Nebraska	9.08	0.48	(18)	4.07
Arizona	7.75 ^b	0.24	(47)	-11.15	Nevada	7.02 ^b	0.38	(51)	-19.46 ^c
Arkansas	8.91	0.37	(22)	2.13	New Hampshire	8.66	0.57	(28)	-0.69
California	8.34 ^b	0.11	(36)	-4.40	New Jersey	8.94	0.22	(20)	2.56
Colorado	8.37	0.32	(33)	-3.96	New Mexico	7.42	0.42	(49)	-14.92
Connecticut	8.77	0.33	(27)	0.53	New York	7.97 ^b	0.14	(46)	-8.65
Delaware	9.17	0.70	(16)	5.12	North Carolina	8.29	0.22	(38)	-4.92
D.C.	8.84	0.88	(24)	1.39	North Dakota	8.36	0.72	(34)	-4.15
Florida	8.26 ^b	0.13	(40)	-5.31	Ohio	9.55 ^b	0.20	(07)	9.57
Georgia	8.21	0.24	(41)	-5.88	Oklahoma	9.34	0.35	(14)	7.10
Hawaii	7.50	0.49	(48)	-14.04	Oregon	9.53	0.34	(09)	9.33
Idaho	8.43	0.53	(32)	-3.31	Pennsylvania	9.61 ^b	0.18	(05)	10.25
Illinois	9.15	0.19	(17)	4.94	Rhode Island	8.83	0.60	(25)	1.28
Indiana	10.01 ^b	0.28	(02)	14.74	South Carolina	8.00	0.30	(45)	-8.26
Iowa	9.53	0.36	(10)	9.32	South Dakota	8.77	0.67	(26)	0.58
Kansas	9.65	0.40	(03)	10.71	Tennessee	9.55	0.28	(08)	9.46
Kentucky	9.61	0.34	(06)	10.16	Texas	8.30	0.15	(37)	-4.87
Louisiana	9.35	0.33	(13)	7.25	Utah	8.11	0.45	(43)	-6.95
Maine	9.35	0.54	(12)	7.28	Vermont	8.53	0.79	(31)	-2.23
Maryland	8.10	0.28	(44)	-7.07	Virginia	8.19	0.24	(42)	-6.07
Massachusetts	8.92	0.25	(21)	2.27	Washington	9.04	0.27	(19)	3.67
Michigan	9.64 ^b	0.21	(04)	10.61	West Virginia	10.02	0.47	(01)	14.86
Minnesota	9.52	0.30	(11)	9.18	Wisconsin	9.32	0.28	(15)	6.87
Mississippi	8.29	0.38	(39)	-4.98	Wyoming	8.34	0.88	(35)	-4.34
Missouri	8.88	0.26	(23)	1.81					



^a US Mortality Files, National Center for Health Statistics, Centers for Disease Control and Prevention. Rates are per 100,000 and are age-adjusted to the 2000 US Std Population (19 age groups - Census P25-1130).
^b Difference between state rate and total U.S. rate is statistically significant ($p \leq .0002$).
^c Absolute percent difference between state rate and total U.S. rate is 15% or more.
SE Standard error of the rate.
PD Percent difference between state rate and total U.S. rate.

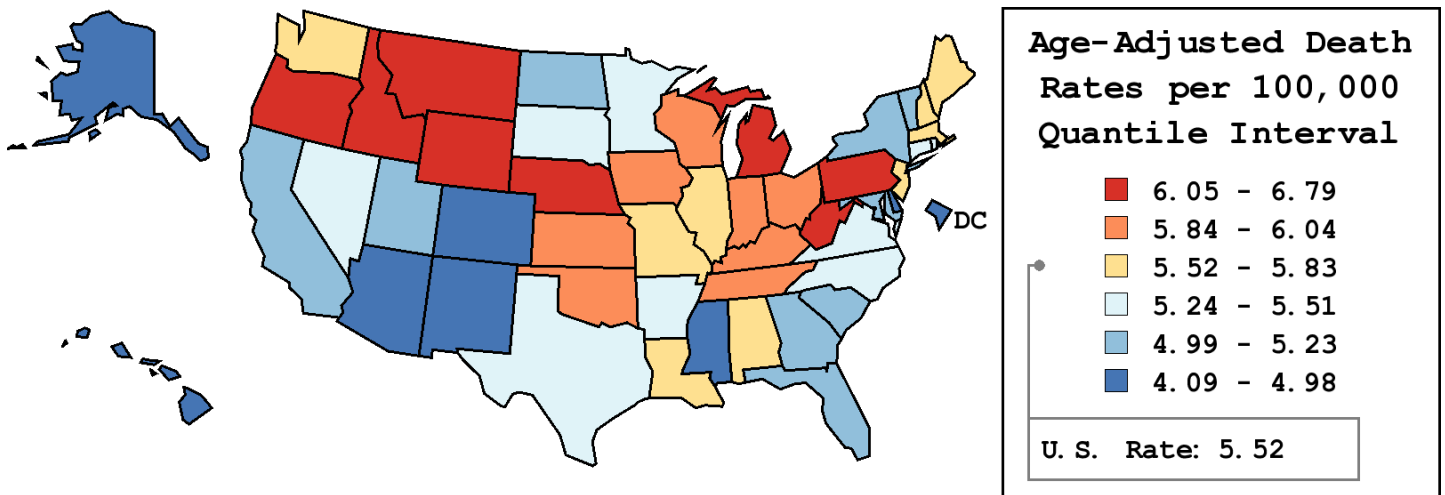
Table 19.24
Non-Hodgkin Lymphoma

Age-Adjusted Cancer Death^a Rates By State, All Races, 2003-2007

Females

State	Rate	SE	Rank	PD
TOTAL U.S.	5.52	0.03		
High Five States				
Wyoming	6.79	0.69	(01)	23.10 ^c
West Virginia	6.44	0.32	(02)	16.73 ^c
Michigan	6.31 ^b	0.15	(03)	14.28
Idaho	6.21	0.41	(04)	12.52
Oregon	6.18	0.24	(05)	12.03
Low Five States				
Mississippi	4.92	0.24	(47)	-10.89
New Mexico	4.86	0.30	(48)	-11.92
Alaska	4.80	0.71	(49)	-13.12
Hawaii	4.31 ^b	0.33	(50)	-21.99 ^c
D.C.	4.09	0.48	(51)	-25.88 ^c

State	Rate	SE	Rank	PD	State	Rate	SE	Rank	PD
Alabama	5.68	0.20	(21)	2.90	Montana	6.08	0.46	(08)	10.20
Alaska	4.80	0.71	(49)	-13.12	Nebraska	6.17	0.34	(06)	11.83
Arizona	4.92 ^b	0.17	(46)	-10.87	Nevada	5.26	0.31	(33)	-4.74
Arkansas	5.30	0.25	(31)	-4.03	New Hampshire	5.52	0.38	(25)	-0.03
California	5.19 ^b	0.08	(39)	-6.02	New Jersey	5.77	0.15	(19)	4.51
Colorado	4.98	0.21	(44)	-9.85	New Mexico	4.86	0.30	(48)	-11.92
Connecticut	5.47	0.22	(27)	-0.91	New York	5.19 ^b	0.09	(38)	-6.02
Delaware	4.96	0.44	(45)	-10.20	North Carolina	5.43	0.15	(28)	-1.55
D.C.	4.09	0.48	(51)	-25.88 ^c	North Dakota	5.21	0.49	(36)	-5.65
Florida	5.14 ^b	0.09	(40)	-6.84	Ohio	5.88	0.13	(15)	6.56
Georgia	4.99 ^b	0.15	(43)	-9.61	Oklahoma	5.88	0.23	(16)	6.52
Hawaii	4.31 ^b	0.33	(50)	-21.99 ^c	Oregon	6.18	0.24	(05)	12.03
Idaho	6.21	0.41	(04)	12.52	Pennsylvania	6.16 ^b	0.12	(07)	11.61
Illinois	5.70	0.12	(20)	3.32	Rhode Island	5.24	0.38	(34)	-5.08
Indiana	6.04	0.18	(09)	9.37	South Carolina	5.23	0.20	(35)	-5.17
Iowa	5.90	0.24	(13)	6.92	South Dakota	5.40	0.46	(29)	-2.16
Kansas	6.03	0.27	(10)	9.30	Tennessee	5.89	0.18	(14)	6.73
Kentucky	5.98	0.22	(12)	8.42	Texas	5.32	0.10	(30)	-3.53
Louisiana	5.83	0.22	(17)	5.56	Utah	5.21	0.32	(37)	-5.66
Maine	5.65	0.36	(23)	2.27	Vermont	5.13	0.52	(41)	-7.00
Maryland	5.08	0.18	(42)	-8.00	Virginia	5.26	0.16	(32)	-4.71
Massachusetts	5.67	0.16	(22)	2.65	Washington	5.78	0.18	(18)	4.78
Michigan	6.31 ^b	0.15	(03)	14.28	West Virginia	6.44	0.32	(02)	16.73 ^c
Minnesota	5.51	0.19	(26)	-0.20	Wisconsin	6.02	0.19	(11)	9.04
Mississippi	4.92	0.24	(47)	-10.89	Wyoming	6.79	0.69	(01)	23.10 ^c
Missouri	5.57	0.18	(24)	0.86					



^a US Mortality Files, National Center for Health Statistics, Centers for Disease Control and Prevention. Rates are per 100,000 and are age-adjusted to the 2000 US Std Population (19 age groups - Census P25-1130).
^b Difference between state rate and total U.S. rate is statistically significant ($p \leq .0002$).
^c Absolute percent difference between state rate and total U.S. rate is 15% or more.
SE Standard error of the rate.
PD Percent difference between state rate and total U.S. rate.

Table 19.25
Non-Hodgkin LymphomaEstimated United States Cancer Prevalence Counts^a on January 1, 2007
By Race/Ethnicity, Sex and Years Since Diagnosis

Years Since Diagnosis		0 to <5	5 to <10	10 to <15	15 to <20	20 to <25	25 to <30	0 to <17 ^e	0 to <32 ^e	>=32 ^g	Complete ^h	
Race	Sex											
All Races ^b	Both Sexes	182,913	110,861	63,509	35,794	20,435	10,965	373,820	427,401	10,924	438,325	
	Males	95,299	57,035	32,947	18,470	10,552	5,417	193,838	221,132	5,723	226,855	
	Females	87,614	53,826	30,562	17,324	9,883	5,548	179,982	206,269	5,201	211,470	
White ^b	Both Sexes	161,338	98,813	56,443	32,481	18,623	10,069	331,476	380,479	11,206	391,685	
	Males	84,198	50,949	29,300	16,811	9,634	4,977	172,148	197,183	6,253	203,436	
	Females	77,140	47,864	27,143	15,670	8,989	5,092	159,328	183,296	4,953	188,249	
Black ^b	Both Sexes	14,184	7,525	4,395	2,174	1,167	613	27,218	30,201	848	31,049	
	Males	7,216	3,766	2,221	1,066	580	269	13,735	15,187	372	15,559	
	Females	6,968	3,759	2,174	1,108	587	344	13,483	15,014	476	15,490	
Asian/ Pacific Islander ^c	Both Sexes	4,512	2,708	1,515	+	+	+	9,114	+	+	+	
	Males	2,334	1,432	761	+	+	+	4,732	+	+	+	
	Females	2,178	1,276	754	+	+	+	4,382	+	+	+	
Hispanic ^d	Both Sexes	11,455	6,593	3,495	+	+	+	22,381	+	+	+	
	Males	5,943	3,499	1,841	+	+	+	11,662	+	+	+	
	Females	5,512	3,094	1,654	+	+	+	10,719	+	+	+	

Estimated prevalence percent^a on January 1, 2007, of the SEER 11 population diagnosed in the previous 17 years
By Age at Prevalence, Race/Ethnicity and Sex

Age at Prevalence	All Ages	Age Specific (Crude)									Age-Adjusted ^f	
		0-9	10-19	20-29	30-39	40-49	50-59	60-69	70-79	80+	All Ages	
Race	Sex											
All Races ^c	Both Sexes	0.1078%	0.0023%	0.0110%	0.0209%	0.0371%	0.0814%	0.1652%	0.3072%	0.4837%	0.5123%	0.1092%
	Males	0.1134%	0.0029%	0.0145%	0.0253%	0.0431%	0.0969%	0.1856%	0.3453%	0.5413%	0.5781%	0.1244%
	Females	0.1023%	0.0017%	0.0074%	0.0161%	0.0309%	0.0658%	0.1456%	0.2728%	0.4390%	0.4756%	0.0961%
White ^c	Both Sexes	0.1197%	0.0024%	0.0111%	0.0219%	0.0388%	0.0853%	0.1751%	0.3304%	0.5290%	0.5480%	0.1169%
	Males	0.1251%	0.0031%	0.0146%	0.0268%	0.0453%	0.1014%	0.1965%	0.3680%	0.5907%	0.6147%	0.1326%
	Females	0.1142%	0.0017%	0.0074%	0.0166%	0.0318%	0.0687%	0.1541%	0.2955%	0.4798%	0.5112%	0.1030%
Black ^c	Both Sexes	0.0655%	0.0019%	0.0102%	0.0196%	0.0360%	0.0784%	0.1409%	0.2251%	0.2763%	0.2352%	0.0779%
	Males	0.0703%	0.0022%	0.0142%	0.0224%	0.0449%	0.0942%	0.1595%	0.2670%	0.2746%	0.2769%	0.0890%
	Females	0.0610%	0.0017%	0.0060%	0.0168%	0.0283%	0.0644%	0.1255%	0.1927%	0.2775%	0.2149%	0.0690%
Asian/ Pacific Islander ^c	Both Sexes	0.0686%	0.0017%	0.0108%	0.0156%	0.0244%	0.0533%	0.1043%	0.1810%	0.3033%	0.3623%	0.0705%
	Males	0.0726%	0.0021%	0.0134%	0.0204%	0.0251%	0.0627%	0.1135%	0.2037%	0.3484%	0.4261%	0.0807%
	Females	0.0650%	-	0.0079%	0.0108%	0.0238%	0.0445%	0.0963%	0.1617%	0.2701%	0.3209%	0.0623%
Hispanic ^d	Both Sexes	0.0488%	0.0018%	0.0087%	0.0145%	0.0275%	0.0586%	0.1182%	0.2120%	0.3666%	0.3778%	0.0797%
	Males	0.0492%	0.0020%	0.0117%	0.0181%	0.0325%	0.0658%	0.1316%	0.2061%	0.3821%	0.4041%	0.0855%
	Females	0.0482%	0.0015%	0.0056%	0.0101%	0.0216%	0.0510%	0.1053%	0.2170%	0.3553%	0.3624%	0.0742%

^a US 2007 cancer prevalence counts are based on 2007 cancer prevalence proportions from the SEER registries and 1/1/2007 US population estimates based on the average of 2006 and 2007 population estimates from the US Bureau of the Census. Prevalence was calculated using the First Malignant Primary Only for a person.

^{b c d} Statistics based on (b) SEER 9 Areas (c) SEER 11 Areas and Rural Georgia (d) NHIA for Hispanic for SEER 11 Areas and Rural Georgia.

^e Maximum limited-duration prevalence: 32 years for 1975-2007 SEER 9 data; 17 years for 1990-2007 SEER 11 data (used to calculate prevalence for Hispanics and Asian Pacific Islanders).

^f Percentages are age-adjusted to the 2000 US Standard Population (19 age groups - Census P25-1130) by 5-year age groups.

^{g h i} (g) Cases diagnosed more than 32 years ago were estimated using the completeness index method (Capocaccia et. al. 1997, Merrill et. al. 2000). (h) Complete prevalence is obtained by summing 0 to <32 and >=32. (i) Age-specific completeness index was approximated using empirical data from historical Connecticut tumor registry.

- Statistic not shown. Statistic based on fewer than 5 cases estimated alive in SEER for the time interval.

+ Not available.

Table 19.26
All Lymphoid Neoplasms With Detailed Non-Hodgkin Lymphoma Subtypes^a
SEER^b Incidence Rates and Annual Percent Change by Age at Diagnosis

All Races, Both Sexes, 2001-2007

Site	All Ages			Ages 0-19			Ages 20-64			Ages 65+		
	Rate	Count	APC	Rate	Count	APC	Rate	Count	APC	Rate	Count	APC
Lymphoid Neoplasm	34.8	178,721	-0.5	5.8	8,799	1.0	23.4	76,142	-1.0*	153.5	93,780	-0.3
1 Hodgkin Lymphoma	2.8	14,806	0.7*	1.2	1,791	1.3	3.3	10,436	-0.1	4.2	2,579	3.4*
2 Non-Hodgkin lymphoma	30.8	157,824	-0.4	4.6	6,960	1.0	19.5	63,573	-1.0*	142.9	87,291	-0.2
2(a) Non-Hodgkin lymphoma, B-cell	28.1	143,490	-0.2	3.2	4,855	4.1*	17.5	56,981	-0.8*	133.7	81,654	-0.1
2(a) 1. Precursor Non-Hodgkin lymphoma, B-cell	1.2	6,247	4.8*	2.5	3,843	5.0*	0.6	1,843	4.0*	0.9	561	6.3*
2(a) 2. Mature Non-Hodgkin lymphoma, B-cell	25.7	131,371	-0.4	0.6	965	0.6	16.3	53,112	-0.8*	126.6	77,294	-0.2
2(a) 2.1. Chronic/Small/Prolymphocytic/ Mantle B-cell Non-Hodgkin lymphoma	6.3	31,891	-1.6	-	-	-	3.2	10,456	-2.4*	35.0	21,420	-1.3
2(a) 2.1.1. Chronic/Small lymphocytic leukemia/lymphoma	5.5	28,092	-2.0*	-	-	-	2.7	9,050	-2.5*	31.1	19,030	-1.8
2(a) 2.1.2. Prolymphocytic leukemia, B-cell	0.0	141	-5.3	-	-	-	0.0	39	-	0.2	99	-
2(a) 2.1.3. Mantle-cell lymphoma	0.7	3,658	1.5	0.0	0	-	0.4	1,367	-0.9	3.8	2,291	2.8
2(a) 2.2. Lymphoplasmacytic lymphoma/ Waldenstrom macroglobulinemia	0.6	3,206	-3.7*	-	-	-	0.3	958	-4.2*	3.7	2,246	-3.5*
2(a) 2.2.1. Lymphoplasmacytic lymphoma	0.3	1,401	-0.3	0.0	0	-	0.1	441	-2.6	1.6	960	0.6
2(a) 2.2.2. Waldenstrom macroglobulinemia	0.4	1,805	-6.1*	-	-	-	0.2	517	-5.4*	2.1	1,286	-6.4*
2(a) 2.3. Diffuse large B-cell lymphoma (DLBCL)	6.9	35,259	-0.1	0.3	424	0.0	4.7	15,225	-0.8*	32.0	19,610	0.3
2(a) 2.3.1. DLBCL, NOS ^c	6.8	35,011	-0.2	0.3	413	-1.2	4.6	15,035	-1.0*	32.0	19,563	0.3
2(a) 2.3.2. Intravascular large B-cell lymphoma	0.0	35	-	0.0	0	-	-	-	-	0.0	23	-
2(a) 2.3.3. Primary effusion lymphoma	0.0	48	-	0.0	0	-	0.0	36	-	-	-	-
2(a) 2.3.4. Mediastinal large B-cell lymphoma	0.0	165	17.5*	-	-	-	0.0	142	15.4	-	-	-
2(a) 2.4. Burkitt lymphoma/leukemia	0.4	2,103	0.8	0.3	431	0.0	0.4	1,179	2.6	0.8	493	-2.4
2(a) 2.5. Marginal-zone lymphoma (MZL)	1.8	9,298	2.2*	0.0	37	-	1.2	3,919	0.1	8.8	5,342	3.5*
2(a) 2.5.1. Splenic MZL	0.1	629	3.3*	0.0	0	-	0.1	246	-1.8	0.6	383	6.3*
2(a) 2.5.2. Extranodal MZL, MALT ^c type	1.1	5,887	0.7	0.0	24	-	0.8	2,626	-0.5	5.3	3,237	1.5
2(a) 2.5.3. Nodal MZL	0.5	2,782	5.2*	-	-	-	0.3	1,047	2.4	2.8	1,722	6.7*
2(a) 2.6. Follicular lymphoma	3.7	19,001	1.1	0.0	49	-	3.0	9,808	0.5	15.1	9,144	1.8
2(a) 2.7. Hairy-cell leukemia	0.3	1,563	-1.7	0.0	0	-	0.3	1,005	-1.1	0.9	558	-2.7
2(a) 2.8. Plasma cell neoplasms	5.7	29,028	-0.9	-	-	-	3.2	10,555	-0.8	30.3	18,466	-1.0
2(a) 2.8.1. Plasmacytoma	0.4	1,812	0.0	-	-	-	0.3	908	-1.8	1.5	899	1.7
2(a) 2.8.2. Multiple myeloma/ plasma-cell leukemia	5.4	27,216	-1.0	-	-	-	2.9	9,647	-0.7	28.8	17,567	-1.1
2(a) 2.9. Heavy chain disease	0.0	22	-	0.0	0	-	-	-	-	-	-	-
2(a) 3. Non-Hodgkin lymphoma, B-cell, NOS ^c	1.2	5,872	0.3	0.0	47	-	0.6	2,026	-3.9*	6.2	3,799	2.3

^a The APC is the Annual Percent Change over the time interval.

Morton LM, Turner JJ, Cerhan JR, Linet MS, Treseler PA, Clarke CA, Jack A, Cozen W, Maynadié M, Spinelli JJ, Costantini AS, Rüdiger T, Scarpa A, Zheng T, Weisenburger DD. Proposed classification of lymphoid neoplasms for epidemiologic research from the Pathology Working Group of the International Lymphoma Epidemiology Consortium (InterLymph). *Blood*. 2007;110:695-708.

^b SEER 17 areas (San Francisco, Connecticut, Detroit, Hawaii, Iowa, New Mexico, Seattle, Utah, Atlanta, San Jose-Monterey, Los Angeles, Alaska Native Registry, Rural Georgia, California excluding SF/SJM/LA, Kentucky, Louisiana and New Jersey).

^c NOS = Not otherwise specified. MALT = Mucosa-associated lymphoid tissue. NK = Natural killer.

* The APC is significantly different from zero (p<.05).

- Statistic not shown. Rate based on less than 16 cases for the time interval.

Trend based on less than 10 cases for at least one year within the time interval.

Table 19.26 - continued
 All Lymphoid Neoplasms With Detailed Non-Hodgkin Lymphoma Subtypes
 SEER^b Incidence Rates and Annual Percent Change by Age at Diagnosis

All Races, Both Sexes, 2001-2007

Site	All Ages			Ages 0-19			Ages 20-64			Ages 65+		
	Rate	Count	APC	Rate	Count	APC	Rate	Count	APC	Rate	Count	APC
2(b) Non-Hodgkin lymphoma, T-cell	2.0	10,638	-0.8	0.7	1,113	-0.5	1.7	5,489	-1.7	6.6	4,036	0.2
2(b) 1. Precursor Non-Hodgkin lymphoma, T-cell	0.3	1,421	-0.3	0.5	753	-0.5	0.2	575	0.6	0.2	93	-3.2
2(b) 2. Mature Non-Hodgkin lymphoma, T-cell	1.8	9,095	-0.7	0.2	355	-1.0	1.5	4,852	-1.9	6.4	3,888	0.6
2(b) 2.1. Mycosis fungoides/Sezary syndrome	0.5	2,406	-2.0	0.0	55	-	0.4	1,447	-2.9	1.5	904	-1.6
2(b) 2.1.1. Mycosis fungoides	0.5	2,352	-1.9	0.0	55	-	0.4	1,428	-2.7	1.4	869	-1.5
2(b) 2.1.2. Sezary syndrome	0.0	54	-	0.0	0	-	0.0	19	-	0.1	35	-
2(b) 2.2. Peripheral T-cell lymphoma	1.1	5,870	-0.6	0.2	276	-3.3	0.9	2,962	-1.8	4.3	2,632	0.9
2(b) 2.2.1. Peripheral T-cell lymphoma, NOS ^c	0.4	2,064	-1.4	0.0	48	-	0.3	993	-3.5	1.7	1,023	0.8
2(b) 2.2.2. Angioimmunoblastic T-cell lymphoma	0.1	605	11.3*	-	-	-	0.1	240	11.1*	0.6	363	11.6*
2(b) 2.2.3. Subcutaneous panniculitis-like T-cell lymphoma	0.0	66	-	-	-	-	0.0	39	-	0.0	20	-
2(b) 2.2.4. Anaplastic large cell lymphoma, T-cell or null-cell type	0.3	1,376	-4.8*	0.1	175	-2.9	0.2	742	-6.1*	0.8	459	-3.4
2(b) 2.2.5. Hepatosplenic T-cell lymphoma	0.0	38	-	-	-	-	0.0	29	-	-	-	-
2(b) 2.2.6. Enteropathy-type T-cell lymphoma	0.0	64	-	0.0	0	-	0.0	35	-	0.0	29	-
2(b) 2.2.7. Cutaneous T-cell lymphoma, NOS ^c	0.2	1,125	-4.3*	-	-	-	0.2	598	-4.4	0.8	514	-4.1
2(b) 2.2.8. Primary cutaneous anaplastic large cell lymphoma	0.1	532	5.8*	0.0	25	-	0.1	286	8.0*	0.4	221	3.3
2(b) 2.3. Adult T-cell leukemia/lymphoma	0.0	191	-5.6	-	-	-	0.0	88	-	0.2	96	-
2(b) 2.4. NK ^c /T-cell lymphoma, nasal-type/aggressive NK ^c -cell leukemia	0.1	367	5.4	0.0	16	-	0.1	253	5.5	0.2	98	-
2(b) 2.5. T-cell large granular lymphocytic leukemia	0.0	120	-	-	-	-	0.0	44	-	0.1	75	-
2(b) 2.6. Prolymphocytic leukemia, T-cell	0.0	141	1.0	0.0	0	-	0.0	58	-	0.1	83	-
2(b) 3. Non-Hodgkin lymphoma, NOS ^c , T-cell	0.0	122	-7.4	-	-	-	0.0	62	-	0.1	55	-
2(c) Non-Hodgkin lymphoma, unknown lineage	0.7	3,696	-8.8*	0.6	992	-11.5*	0.3	1,103	-10.6*	2.6	1,601	-6.3*
2(c) 1. Precursor lymphoblastic leukemia/lymphoma, unknown lineage	0.3	1,665	-11.7*	0.6	975	-11.7*	0.1	393	-15.1*	0.5	297	-7.3*
2(c) 2. Prolymphocytic leukemia, unknown lineage	0.0	80	-	-	-	-	0.0	23	-	0.1	55	-
2(c) 3. Non-Hodgkin lymphoma, NOS ^c , unknown lineage	0.4	1,951	-6.6*	-	-	-	0.2	687	-8.0*	2.0	1,249	-6.0*
2(*) 1. Total precursor lymphoma/leukemia ^d	1.8	9,333	0.9	3.6	5,571	1.2	0.9	2,811	0.4	1.6	951	1.0
3 Composite Hodgkin lymphoma and Non-Hodgkin lymphoma	0.0	79	-	0.0	0	-	0.0	36	-	0.1	43	-
4 Lymphoid neoplasm, NOS ^c	1.2	6,012	-5.0*	0.0	48	-	0.6	2,097	-6.0*	6.2	3,867	-4.5*

^a The APC is the Annual Percent Change over the time interval.

Morton LM, et al. Proposed classification of lymphoid neoplasms for epidemiologic research from the Pathology Working Group of the International Lymphoma Epidemiology Consortium (InterLymph). Blood. 2007;110:695-708.

^b SEER 17 areas (San Francisco, Connecticut, Detroit, Hawaii, Iowa, New Mexico, Seattle, Utah, Atlanta, San Jose-Monterey, Los Angeles, Alaska Native Registry, Rural Georgia, California excluding SF/SJM/LA, Kentucky, Louisiana and New Jersey).

^c NOS = Not otherwise specified. MALT = Mucosa-associated lymphoid tissue. NK = Natural killer.

^d Total precursor lymphoma/leukemia is comprised of categories 2(a)1., 2(b)1., and 2(c)1.

* The APC is significantly different from zero (p<.05).

- Statistic not shown. Rate based on less than 16 cases for the time interval.

Trend based on less than 10 cases for at least one year within the time interval.

Table 19.27
All Lymphoid Neoplasms With Detailed Non-Hodgkin Lymphoma Subtypes^a
SEER^b Incidence Rates and Annual Percent Change by Age at Diagnosis

All Races, Males, 2001-2007

Site	All Ages			Ages 0-19			Ages 20-64			Ages 65+		
	Rate	Count	APC	Rate	Count	APC	Rate	Count	APC	Rate	Count	APC
Lymphoid Neoplasm	42.8	98,406	-0.5	6.6	5,158	1.2	27.9	44,650	-1.1*	194.3	48,598	-0.2
1 Hodgkin Lymphoma	3.1	8,098	0.9	1.3	977	2.0	3.6	5,790	-0.2	5.2	1,331	3.5
2 Non-Hodgkin lymphoma	38.3	87,123	-0.4	5.3	4,150	1.1	23.5	37,565	-1.1*	181.4	45,408	-0.1
2(a) Non-Hodgkin lymphoma, B-cell	34.8	78,759	-0.1	3.6	2,802	3.6	21.0	33,596	-0.8*	169.3	42,361	0.1
2(a) 1. Precursor Non-Hodgkin lymphoma, B-cell	1.3	3,410	4.5*	2.7	2,131	4.7	0.6	1,031	3.4*	1.0	248	6.2
2(a) 2. Mature Non-Hodgkin lymphoma, B-cell	32.1	72,319	-0.3	0.8	641	-0.1	19.7	31,412	-0.7*	160.8	40,266	-0.1
2(a) 2.1. Chronic/Small/Prolymphocytic/ Mantle B-cell Non-Hodgkin lymphoma	8.8	19,240	-1.7*	-	-	-	4.3	6,856	-2.7*	49.5	12,376	-1.4
2(a) 2.1.1. Chronic/Small lymphocytic leukemia/lymphoma	7.6	16,586	-2.3*	-	-	-	3.6	5,819	-2.9*	43.1	10,760	-2.1*
2(a) 2.1.2. Prolymphocytic leukemia, B-cell	0.0	87	-	-	-	-	0.0	23	-	0.3	63	-
2(a) 2.1.3. Mantle-cell lymphoma	1.1	2,567	2.1	0.0	0	-	0.6	1,014	-1.0	6.2	1,553	3.7
2(a) 2.2. Lymphoplasmacytic lymphoma/ Waldenstrom macroglobulinemia	0.9	1,873	-4.1*	-	-	-	0.3	554	-6.0*	5.3	1,318	-3.5
2(a) 2.2.1. Lymphoplasmacytic lymphoma	0.4	771	0.1	0.0	0	-	0.2	251	-4.6	2.1	520	1.8
2(a) 2.2.2. Waldenstrom macroglobulinemia	0.5	1,102	-6.9*	-	-	-	0.2	303	-6.9	3.2	798	-6.9*
2(a) 2.3. Diffuse large B-cell lymphoma (DLBCL)	8.3	18,975	0.1	0.3	242	-1.4	5.8	9,202	-0.8	38.2	9,531	0.7*
2(a) 2.3.1. DLBCL, NOS ^c	8.3	18,840	0.0	0.3	240	-1.7	5.7	9,097	-1.0	38.1	9,503	0.7*
2(a) 2.3.2. Intravascular large B-cell lymphoma	0.0	22	-	0.0	0	-	-	-	-	-	-	-
2(a) 2.3.3. Primary effusion lymphoma	0.0	42	-	0.0	0	-	0.0	33	-	-	-	-
2(a) 2.3.4. Mediastinal large B-cell lymphoma	0.0	71	-	-	-	-	0.0	63	-	-	-	-
2(a) 2.4. Burkitt lymphoma/leukemia	0.6	1,526	0.9	0.4	334	0.1	0.6	917	2.6	1.1	275	-2.7
2(a) 2.5. Marginal-zone lymphoma (MZL)	1.9	4,211	3.0*	0.0	17	-	1.2	1,855	1.7	9.3	2,339	3.8*
2(a) 2.5.1. Splenic MZL	0.1	297	4.6	0.0	0	-	0.1	121	-2.6	0.7	176	8.6*
2(a) 2.5.2. Extranodal MZL, MALT ^c type	1.2	2,623	1.0	-	-	-	0.8	1,199	1.2	5.6	1,415	1.1
2(a) 2.5.3. Nodal MZL	0.6	1,291	6.7*	-	-	-	0.3	535	4.3	3.0	748	7.9*
2(a) 2.6. Follicular lymphoma	4.0	9,394	1.3	0.0	34	-	3.2	5,145	0.1	16.6	4,215	2.4*
2(a) 2.7. Hairy-cell leukemia	0.5	1,229	-0.7	0.0	0	-	0.5	804	-0.9	1.7	425	-0.4
2(a) 2.8. Plasma cell neoplasms	7.2	15,857	-0.4	-	-	-	3.8	6,077	0.0	39.0	9,775	-0.6
2(a) 2.8.1. Plasmacytoma	0.5	1,139	0.2	-	-	-	0.4	608	-1.5	2.1	527	1.8
2(a) 2.8.2. Multiple myeloma/ plasma-cell leukemia	6.7	14,718	-0.5	-	-	-	3.4	5,469	0.2	36.9	9,248	-0.8
2(a) 2.9. Heavy chain disease	-	-	-	0.0	0	-	-	-	-	-	-	-
2(a) 3. Non-Hodgkin lymphoma, B-cell, NOS ^c	1.4	3,030	0.5	0.0	30	-	0.7	1,153	-4.7	7.5	1,847	2.9

^a The APC is the Annual Percent Change over the time interval.

Morton LM, Turner JJ, Cerhan JR, Linet MS, Treseler PA, Clarke CA, Jack A, Cozen W, Maynadié M, Spinelli JJ, Costantini AS, Rüdiger T, Scarpa A, Zheng T, Weisenburger DD. Proposed classification of lymphoid neoplasms for epidemiologic research from the Pathology Working Group of the International Lymphoma Epidemiology Consortium (InterLymph). *Blood*. 2007;110:695-708.

^b SEER 17 areas (San Francisco, Connecticut, Detroit, Hawaii, Iowa, New Mexico, Seattle, Utah, Atlanta, San Jose-Monterey, Los Angeles, Alaska Native Registry, Rural Georgia, California excluding SF/SJM/LA, Kentucky, Louisiana and New Jersey).

^c NOS = Not otherwise specified. MALT = Mucosa-associated lymphoid tissue. NK = Natural killer.

* The APC is significantly different from zero (p<.05).

- Statistic not shown. Rate based on less than 16 cases for the time interval.

Trend based on less than 10 cases for at least one year within the time interval.

Table 19.27 - continued
 All Lymphoid Neoplasms With Detailed Non-Hodgkin Lymphoma Subtypes
 SEER^b Incidence Rates and Annual Percent Change by Age at Diagnosis

All Races, Males, 2001-2007

Site	All Ages			Ages 0-19			Ages 20-64			Ages 65+		
	Rate	Count	APC	Rate	Count	APC	Rate	Count	APC	Rate	Count	APC
2(b) Non-Hodgkin lymphoma, T-cell	2.6	6,345	-1.7	1.0	773	1.4	2.1	3,283	-2.4	9.1	2,289	-1.7*
2(b) 1. Precursor Non-Hodgkin lymphoma, T-cell	0.4	984	-0.2	0.7	554	1.5	0.2	387	-1.7	0.2	43	-
2(b) 2. Mature Non-Hodgkin lymphoma, T-cell	2.2	5,289	-1.8	0.3	215	0.7	1.8	2,860	-2.5	8.8	2,214	-1.3*
2(b) 2.1. Mycosis fungoides/Sezary syndrome	0.6	1,375	-3.1	0.0	20	-	0.5	782	-1.6	2.3	573	-4.9*
2(b) 2.1.1. Mycosis fungoides	0.6	1,344	-3.0	0.0	20	-	0.5	773	-1.6	2.2	551	-4.8*
2(b) 2.1.2. Sezary syndrome	0.0	31	-	0.0	0	-	-	-	-	0.1	22	-
2(b) 2.2. Peripheral T-cell lymphoma	1.5	3,443	-1.7*	0.2	177	-0.2	1.1	1,808	-3.2*	5.8	1,458	-0.6
2(b) 2.2.1. Peripheral T-cell lymphoma, NOS ^c	0.5	1,222	-1.9	0.0	32	-	0.4	628	-4.1*	2.2	562	0.1
2(b) 2.2.2. Angioimmunoblastic T-cell lymphoma	0.1	315	9.2*	-	-	-	0.1	130	7.5	0.7	184	10.3*
2(b) 2.2.3. Subcutaneous panniculitis-like T-cell lymphoma	0.0	19	-	0.0	0	-	-	-	-	-	-	-
2(b) 2.2.4. Anaplastic large cell lymphoma, T-cell or null-cell type	0.4	862	-7.2*	0.1	116	0.7	0.3	491	-7.7*	1.0	255	-8.9*
2(b) 2.2.5. Hepatosplenic T-cell lymphoma	0.0	25	-	-	-	-	0.0	16	-	-	-	-
2(b) 2.2.6. Enteropathy-type T-cell lymphoma	0.0	40	-	0.0	0	-	0.0	21	-	0.1	19	-
2(b) 2.2.7. Cutaneous T-cell lymphoma, NOS ^c	0.3	652	-4.7	-	-	-	0.2	363	-4.8	1.1	282	-4.7
2(b) 2.2.8. Primary cutaneous anaplastic large cell lymphoma	0.1	308	6.7	-	-	-	0.1	149	9.2*	0.6	144	3.9
2(b) 2.3. Adult T-cell leukemia/lymphoma	0.0	98	-	-	-	-	0.0	50	-	0.2	42	-
2(b) 2.4. NK ^c /T-cell lymphoma, nasal-type/aggressive NK ^c -cell leukemia	0.1	237	5.6*	-	-	-	0.1	168	4.4	0.2	57	-
2(b) 2.5. T-cell large granular lymphocytic leukemia	0.0	62	-	0.0	0	-	0.0	20	-	0.2	42	-
2(b) 2.6. Prolymphocytic leukemia, T-cell	0.0	74	-	0.0	0	-	0.0	32	-	0.2	42	-
2(b) 3. Non-Hodgkin lymphoma, NOS ^c , T-cell	0.0	72	-	-	-	-	0.0	36	-	0.1	32	-
2(c) Non-Hodgkin lymphoma, unknown lineage	0.9	2,019	-8.5*	0.7	575	-11.0*	0.4	686	-9.8*	3.1	758	-6.2*
2(c) 1. Precursor lymphoblastic leukemia/lymphoma, unknown lineage	0.4	935	-11.1*	0.7	562	-11.2*	0.1	227	-14.6*	0.6	146	-6.3
2(c) 2. Prolymphocytic leukemia, unknown lineage	0.0	50	-	-	-	-	-	-	-	0.1	34	-
2(c) 3. Non-Hodgkin lymphoma, NOS ^c , unknown lineage	0.5	1,034	-6.6*	-	-	-	0.3	444	-7.2*	2.3	578	-6.3*
2(*) 1. Total precursor lymphoma/leukemia ^d	2.0	5,329	0.7	4.1	3,247	1.3	1.0	1,645	-0.5	1.7	437	0.4
3 Composite Hodgkin lymphoma and Non-Hodgkin lymphoma	0.0	40	-	0.0	0	-	0.0	23	-	0.1	17	-
4 Lymphoid neoplasm, NOS ^c	1.4	3,145	-5.0*	0.0	31	-	0.8	1,272	-6.0*	7.5	1,842	-4.4*

^a The APC is the Annual Percent Change over the time interval.
 Morton LM, et al. Proposed classification of lymphoid neoplasms for epidemiologic research from the Pathology Working Group of the International Lymphoma Epidemiology Consortium (InterLymph). Blood. 2007;110:695-708.

^b SEER 17 areas (San Francisco, Connecticut, Detroit, Hawaii, Iowa, New Mexico, Seattle, Utah, Atlanta, San Jose-Monterey, Los Angeles, Alaska Native Registry, Rural Georgia, California excluding SF/SJM/LA, Kentucky, Louisiana and New Jersey).

^c NOS = Not otherwise specified. MALT = Mucosa-associated lymphoid tissue. NK = Natural killer.

^d Total precursor lymphoma/leukemia is comprised of categories 2(a)1., 2(b)1., and 2(c)1.

* The APC is significantly different from zero (p<.05).

- Statistic not shown. Rate based on less than 16 cases for the time interval.
 Trend based on less than 10 cases for at least one year within the time interval.

Table 19.28
All Lymphoid Neoplasms With Detailed Non-Hodgkin Lymphoma Subtypes^a
SEER^b Incidence Rates and Annual Percent Change by Age at Diagnosis

All Races, Females, 2001-2007

Site	All Ages			Ages 0-19			Ages 20-64			Ages 65+		
	Rate	Count	APC	Rate	Count	APC	Rate	Count	APC	Rate	Count	APC
Lymphoid Neoplasm	28.4	80,315	-0.6	4.9	3,641	0.9	19.1	31,492	-1.0*	125.3	45,182	-0.5
1 Hodgkin Lymphoma	2.5	6,708	0.6	1.1	814	0.4	2.9	4,646	0.0	3.5	1,248	3.0
2 Non-Hodgkin lymphoma	25.0	70,701	-0.5	3.8	2,810	0.9	15.6	26,008	-1.0	116.4	41,883	-0.4
2(a) Non-Hodgkin lymphoma, B-cell	22.8	64,731	-0.3	2.8	2,053	4.8*	14.0	23,385	-0.8	109.2	39,293	-0.4
2(a) 1. Precursor Non-Hodgkin lymphoma, B-cell	1.1	2,837	5.2*	2.3	1,712	5.3*	0.5	812	4.5*	0.9	313	7.1*
2(a) 2. Mature Non-Hodgkin lymphoma, B-cell	20.8	59,052	-0.6	0.4	324	1.7	13.0	21,700	-0.9	103.0	37,028	-0.5
2(a) 2.1. Chronic/Small/Prolymphocytic/ Mantle B-cell Non-Hodgkin lymphoma	4.4	12,651	-1.6	-	-	-	2.1	3,600	-1.8	24.9	9,044	-1.6
2(a) 2.1.1. Chronic/Small lymphocytic leukemia/lymphoma	4.0	11,506	-1.8	-	-	-	1.9	3,231	-1.9	22.7	8,270	-1.7
2(a) 2.1.2. Prolymphocytic leukemia, B-cell	0.0	54	-	-	-	-	0.0	16	-	0.1	36	-
2(a) 2.1.3. Mantle-cell lymphoma	0.4	1,091	0.0	0.0	0	-	0.2	353	-1.0	2.1	738	0.5
2(a) 2.2. Lymphoplasmacytic lymphoma/ Waldenstrom macroglobulinemia	0.5	1,333	-2.9*	-	-	-	0.2	404	-1.9	2.6	928	-3.2*
2(a) 2.2.1. Lymphoplasmacytic lymphoma	0.2	630	-0.5	0.0	0	-	0.1	190	0.1	1.2	440	-0.6
2(a) 2.2.2. Waldenstrom macroglobulinemia	0.2	703	-4.9*	-	-	-	0.1	214	-3.6	1.4	488	-5.6
2(a) 2.3. Diffuse large B-cell lymphoma (DLBCL)	5.7	16,284	-0.4	0.2	182	1.3	3.6	6,023	-0.8	27.9	10,079	-0.1
2(a) 2.3.1. DLBCL, NOS ^c	5.7	16,171	-0.5	0.2	173	-1.0	3.6	5,938	-1.0	27.8	10,060	-0.1
2(a) 2.3.2. Intravascular large B-cell lymphoma	-	-	-	0.0	0	-	-	-	-	-	-	-
2(a) 2.3.3. Primary effusion lymphoma	-	-	-	0.0	0	-	-	-	-	-	-	-
2(a) 2.3.4. Mediastinal large B-cell lymphoma	0.0	94	-	-	-	-	0.1	79	-	-	-	-
2(a) 2.4. Burkitt lymphoma/leukemia	0.2	577	0.8	0.1	97	-	0.2	262	2.4	0.6	218	-0.8
2(a) 2.5. Marginal-zone lymphoma (MZL)	1.8	5,087	1.4	0.0	20	-	1.2	2,064	-1.2	8.4	3,003	3.1*
2(a) 2.5.1. Splenic MZL	0.1	332	1.7	0.0	0	-	0.1	125	-0.7	0.6	207	3.4
2(a) 2.5.2. Extranodal MZL, MALT ^c type	1.2	3,264	0.3	-	-	-	0.9	1,427	-1.8	5.1	1,822	1.8
2(a) 2.5.3. Nodal MZL	0.5	1,491	3.8*	-	-	-	0.3	512	0.5	2.7	974	5.6*
2(a) 2.6. Follicular lymphoma	3.4	9,607	1.0	-	-	-	2.8	4,663	0.9	14.0	4,929	1.2
2(a) 2.7. Hairy-cell leukemia	0.1	334	-5.8	0.0	0	-	0.1	201	-2.5	0.4	133	-
2(a) 2.8. Plasma cell neoplasms	4.6	13,171	-1.7	-	-	-	2.7	4,478	-2.0	24.2	8,691	-1.6
2(a) 2.8.1. Plasmacytoma	0.2	673	-0.4	-	-	-	0.2	300	-2.6	1.0	372	1.2
2(a) 2.8.2. Multiple myeloma/ plasma-cell leukemia	4.4	12,498	-1.8	-	-	-	2.5	4,178	-1.9	23.2	8,319	-1.7
2(a) 2.9. Heavy chain disease	-	-	-	0.0	0	-	-	-	-	-	-	-
2(a) 3. Non-Hodgkin lymphoma, B-cell, NOS ^c	1.0	2,842	0.2	0.0	17	-	0.5	873	-2.9	5.4	1,952	1.5

The APC is the Annual Percent Change over the time interval.

^a Morton LM, Turner JJ, Cerhan JR, Linet MS, Treseler PA, Clarke CA, Jack A, Cozen W, Maynadié M, Spinelli JJ, Costantini AS, Rüdiger T, Scarpa A, Zheng T, Weisenburger DD. Proposed classification of lymphoid neoplasms for epidemiologic research from the Pathology Working Group of the International Lymphoma Epidemiology Consortium (InterLymph). *Blood*. 2007;110:695-708.

^b SEER 17 areas (San Francisco, Connecticut, Detroit, Hawaii, Iowa, New Mexico, Seattle, Utah, Atlanta, San Jose-Monterey, Los Angeles, Alaska Native Registry, Rural Georgia, California excluding SF/SJM/LA, Kentucky, Louisiana and New Jersey).

^c NOS = Not otherwise specified. MALT = Mucosa-associated lymphoid tissue. NK = Natural killer.

* The APC is significantly different from zero (p<.05).

- Statistic not shown. Rate based on less than 16 cases for the time interval.

Trend based on less than 10 cases for at least one year within the time interval.

Table 19.28 - continued
 All Lymphoid Neoplasms With Detailed Non-Hodgkin Lymphoma Subtypes
 SEER^b Incidence Rates and Annual Percent Change by Age at Diagnosis

All Races, Females, 2001-2007

Site	All Ages			Ages 0-19			Ages 20-64			Ages 65+		
	Rate	Count	APC	Rate	Count	APC	Rate	Count	APC	Rate	Count	APC
2(b) Non-Hodgkin lymphoma, T-cell	1.5	4,293	0.2	0.5	340	-4.9	1.3	2,206	-0.6	4.9	1,747	2.4*
2(b) 1. Precursor Non-Hodgkin lymphoma, T-cell	0.2	437	-0.8	0.3	199	-5.7	0.1	188	5.1	0.1	50	-
2(b) 2. Mature Non-Hodgkin lymphoma, T-cell	1.4	3,806	0.4	0.2	140	-4.0	1.2	1,992	-1.2	4.7	1,674	2.8*
2(b) 2.1. Mycosis fungoides/Sezary syndrome	0.4	1,031	-1.1	0.0	35	-	0.4	665	-4.3*	0.9	331	4.0
2(b) 2.1.1. Mycosis fungoides	0.4	1,008	-0.9	0.0	35	-	0.4	655	-4.0*	0.9	318	4.1
2(b) 2.1.2. Sezary syndrome	0.0	23	-	0.0	0	-	-	-	-	-	-	-
2(b) 2.2. Peripheral T-cell lymphoma	0.9	2,427	0.7	0.1	99	-	0.7	1,154	0.2	3.3	1,174	2.2
2(b) 2.2.1. Peripheral T-cell lymphoma, NOS ^c	0.3	842	-0.8	0.0	16	-	0.2	365	-2.6	1.3	461	1.5
2(b) 2.2.2. Angioimmunoblastic T-cell lymphoma	0.1	290	13.4*	-	-	-	0.1	110	-	0.5	179	12.6*
2(b) 2.2.3. Subcutaneous panniculitis-like T-cell lymphoma	0.0	47	-	-	-	-	0.0	29	-	-	-	-
2(b) 2.2.4. Anaplastic large cell lymphoma, T-cell or null-cell type	0.2	514	-1.4	0.1	59	-	0.2	251	-2.9*	0.6	204	3.2
2(b) 2.2.5. Hepatosplenic T-cell lymphoma	-	-	-	0.0	0	-	-	-	-	0.0	0	-
2(b) 2.2.6. Enteropathy-type T-cell lymphoma	0.0	24	-	0.0	0	-	-	-	-	-	-	-
2(b) 2.2.7. Cutaneous T-cell lymphoma, NOS ^c	0.2	473	-4.6	-	-	-	0.1	235	-3.8	0.6	232	-5.2
2(b) 2.2.8. Primary cutaneous anaplastic large cell lymphoma	0.1	224	4.5	-	-	-	0.1	137	6.6	0.2	77	-
2(b) 2.3. Adult T-cell leukemia/lymphoma	0.0	93	-	-	-	-	0.0	38	-	0.1	54	-
2(b) 2.4. NK ^c /T-cell lymphoma, nasal-type/aggressive NK ^c -cell leukemia	0.0	130	4.5	-	-	-	0.1	85	-	0.1	41	-
2(b) 2.5. T-cell large granular lymphocytic leukemia	0.0	58	-	-	-	-	0.0	24	-	0.1	33	-
2(b) 2.6. Prolymphocytic leukemia, T-cell	0.0	67	-	0.0	0	-	0.0	26	-	0.1	41	-
2(b) 3. Non-Hodgkin lymphoma, NOS ^c , T-cell	0.0	50	-	-	-	-	0.0	26	-	0.1	23	-
2(c) Non-Hodgkin lymphoma, unknown lineage	0.6	1,677	-9.4*	0.6	417	-12.2*	0.3	417	-11.6*	2.3	843	-6.8*
2(c) 1. Precursor lymphoblastic leukemia/lymphoma, unknown lineage	0.3	730	-12.4*	0.6	413	-12.5*	0.1	166	-15.2*	0.4	151	-9.1*
2(c) 2. Prolymphocytic leukemia, unknown lineage	0.0	30	-	-	-	-	-	-	-	0.1	21	-
2(c) 3. Non-Hodgkin lymphoma, NOS ^c , unknown lineage	0.3	917	-6.9*	-	-	-	0.1	243	-9.5*	1.8	671	-6.1*
2(*) 1. Total precursor lymphoma/leukemia ^d	1.5	4,004	1.2	3.1	2,324	1.0	0.7	1,166	1.5	1.5	514	1.6
3 Composite Hodgkin lymphoma and Non-Hodgkin lymphoma	0.0	39	-	0.0	0	-	-	-	-	0.1	26	-
4 Lymphoid neoplasm, NOS ^c	1.0	2,867	-4.8*	0.0	17	-	0.5	825	-6.1*	5.3	2,025	-4.3*

The APC is the Annual Percent Change over the time interval.

^a Morton LM, et al. Proposed classification of lymphoid neoplasms for epidemiologic research from the Pathology Working Group of the International Lymphoma Epidemiology Consortium (InterLymph). Blood. 2007;110:695-708.

^b SEER 17 areas (San Francisco, Connecticut, Detroit, Hawaii, Iowa, New Mexico, Seattle, Utah, Atlanta, San Jose-Monterey, Los Angeles, Alaska Native Registry, Rural Georgia, California excluding SF/SJM/LA, Kentucky, Louisiana and New Jersey).

^c NOS = Not otherwise specified. MALT = Mucosa-associated lymphoid tissue. NK = Natural killer.

^d Total precursor lymphoma/leukemia is comprised of categories 2(a)1., 2(b)1., and 2(c)1.

* The APC is significantly different from zero (p<.05).

- Statistic not shown. Rate based on less than 16 cases for the time interval.

Trend based on less than 10 cases for at least one year within the time interval.

Table 19.29
All Lymphoid Neoplasms With Detailed Non-Hodgkin Lymphoma Subtypes

SEER^b 3-Year Relative Survival (Percent) by Age at Diagnosis

All Races, Both Sexes, 2001-2006

Site	Count	All Ages		Ages 0-19		Ages 20-64		Ages 65+	
		Percent (95% C.I.)	Percent (95% C.I.)	Percent (95% C.I.)	Percent (95% C.I.)	Percent (95% C.I.)	Percent (95% C.I.)		
Lymphoid Neoplasm	127,366	72.1 (71.8 , 72.4)	89.2 (88.4 , 90.0)	78.7 (78.3 , 79.0)	62.4 (61.9 , 62.9)				
1 Hodgkin Lymphoma	11,600	87.3 (86.6 , 88.0)	96.3 (95.1 , 97.2)	91.1 (90.4 , 91.8)	55.2 (52.2 , 58.1)				
2 Non-Hodgkin lymphoma	111,758	71.1 (70.8 , 71.4)	87.5 (86.5 , 88.3)	77.0 (76.6 , 77.4)	63.2 (62.7 , 63.8)				
2(a) Non-Hodgkin lymphoma, B-cell	101,243	71.7 (71.4 , 72.0)	89.8 (88.7 , 90.7)	78.1 (77.7 , 78.6)	64.0 (63.5 , 64.5)				
2(a) 1. Precursor Non-Hodgkin lymphoma, B-cell	4,956	71.1 (69.8 , 72.5)	90.7 (89.6 , 91.8)	38.9 (36.1 , 41.7)	14.5 (10.5 , 19.2)				
2(a) 2. Mature Non-Hodgkin lymphoma, B-cell	92,156	71.8 (71.5 , 72.2)	85.9 (83.2 , 88.2)	79.6 (79.1 , 80.0)	64.3 (63.8 , 64.9)				
2(a) 2.1. Chronic/Small/Prolymphocytic/ Mantle B-cell Non-Hodgkin lymphoma	21,699	82.6 (81.9 , 83.3)	- (- , -)	89.7 (88.9 , 90.5)	77.9 (76.9 , 78.9)				
2(a) 2.1.1. Chronic/Small lymphocytic leukemia/lymphoma	19,185	85.1 (84.4 , 85.9)	- (- , -)	92.1 (91.3 , 92.9)	80.7 (79.6 , 81.7)				
2(a) 2.1.2. Prolymphocytic leukemia, B-cell	104	54.2 (42.2 , 64.7)	- (- , -)	61.3 (41.4 , 76.3)	48.4 (33.1 , 62.1)				
2(a) 2.1.3. Mantle-cell lymphoma	2,410	64.0 (61.6 , 66.3)	- (- , -)	74.4 (71.2 , 77.3)	55.1 (51.7 , 58.4)				
2(a) 2.2. Lymphoplasmacytic lymphoma/ Waldenstrom macroglobulinemia	2,118	81.5 (79.1 , 83.7)	- (- , -)	86.9 (83.8 , 89.5)	78.2 (74.9 , 81.2)				
2(a) 2.2.1. Lymphoplasmacytic lymphoma	882	80.0 (76.2 , 83.3)	- (- , -)	82.5 (77.2 , 86.6)	78.0 (72.6 , 82.5)				
2(a) 2.2.2. Waldenstrom macroglobulinemia	1,236	82.5 (79.3 , 85.3)	- (- , -)	90.2 (86.1 , 93.1)	78.2 (73.7 , 81.9)				
2(a) 2.3. Diffuse large B-cell lymphoma (DLBCL)	25,171	62.9 (62.2 , 63.6)	84.5 (80.1 , 88.0)	71.2 (70.3 , 72.0)	53.5 (52.4 , 54.5)				
2(a) 2.3.1. DLBCL, NOS ^c	24,991	62.9 (62.2 , 63.6)	84.8 (80.4 , 88.4)	71.1 (70.2 , 72.0)	53.5 (52.4 , 54.5)				
2(a) 2.3.2. Intravascular large B-cell lymphoma	-	- (- , -)	- (- , -)	- (- , -)	- (- , -)				
2(a) 2.3.3. Primary effusion lymphoma	28	19.8 (6.4 , 38.6)	- (- , -)	- (- , -)	- (- , -)				
2(a) 2.3.4. Mediastinal large B-cell lymphoma	133	85.8 (77.4 , 91.3)	- (- , -)	89.8 (81.2 , 94.6)	- (- , -)				
2(a) 2.4. Burkitt lymphoma/leukemia	1,595	56.1 (53.4 , 58.6)	85.4 (81.2 , 88.7)	51.7 (48.3 , 55.0)	32.0 (26.3 , 37.9)				
2(a) 2.5. Marginal-zone lymphoma (MZL)	6,246	92.2 (91.1 , 93.2)	100.0 (- , -)	95.9 (94.9 , 96.7)	88.3 (86.4 , 90.0)				
2(a) 2.5.1. Splenic MZL	418	85.0 (79.5 , 89.2)	- (- , -)	92.7 (86.4 , 96.1)	77.7 (68.7 , 84.4)				
2(a) 2.5.2. Extranodal MZL, MALT ^c type	3,989	95.3 (94.0 , 96.4)	- (- , -)	97.2 (96.2 , 98.0)	93.2 (90.7 , 95.1)				
2(a) 2.5.3. Nodal MZL	1,839	86.7 (84.3 , 88.8)	- (- , -)	92.9 (90.4 , 94.8)	80.8 (77.0 , 84.1)				
2(a) 2.6. Follicular lymphoma	13,630	88.5 (87.8 , 89.2)	94.2 (78.2 , 98.6)	92.6 (91.8 , 93.2)	82.7 (81.2 , 84.1)				
2(a) 2.7. Hairy-cell leukemia	1,153	95.9 (93.4 , 97.4)	- (- , -)	97.8 (95.9 , 98.9)	90.9 (83.6 , 95.0)				
2(a) 2.8. Plasma cell neoplasms	20,527	52.9 (52.1 , 53.7)	- (- , -)	64.8 (63.7 , 66.0)	43.7 (42.6 , 44.8)				
2(a) 2.8.1. Plasmacytoma	1,273	77.3 (74.3 , 80.0)	- (- , -)	85.1 (81.8 , 87.8)	66.0 (60.7 , 70.7)				
2(a) 2.8.2. Multiple myeloma/ plasma-cell leukemia	19,254	51.2 (50.4 , 52.1)	- (- , -)	62.9 (61.7 , 64.1)	42.6 (41.5 , 43.7)				
2(a) 2.9. Heavy chain disease	-	- (- , -)	- (- , -)	- (- , -)	- (- , -)				
2(a) 3. Non-Hodgkin lymphoma, B-cell, NOS ^c	4,131	69.4 (67.6 , 71.1)	89.7 (74.6 , 96.0)	75.7 (73.3 , 77.9)	64.0 (61.4 , 66.4)				

^a Morton LM, Turner JJ, Cerhan JR, Linet MS, Treseler PA, Clarke CA, Jack A, Cozen W, Maynadié M, Spinelli JJ, Costantini AS, Rüdiger T, Scarpa A, Zheng T, Weisenburger DD. Proposed classification of lymphoid neoplasms for epidemiologic research from the Pathology Working Group of the International Lymphoma Epidemiology Consortium (InterLymph). *Blood*. 2007;110:695-708.

^b SEER 17 areas (San Francisco, Connecticut, Detroit, Hawaii, Iowa, New Mexico, Seattle, Utah, Atlanta, San Jose-Monterey, Los Angeles, Alaska Native Registry, Rural Georgia, California excluding SF/SJM/LA, Kentucky, Louisiana and New Jersey).

^c NOS = Not otherwise specified. MALT = Mucosa-associated lymphoid tissue. NK = Natural killer.

- Statistic not displayed due to less than 25 cases.

Table 19.29 - continued
 All Lymphoid Neoplasms With Detailed Non-Hodgkin Lymphoma Subtypes

SEER^b 3-Year Relative Survival (Percent) by Age at Diagnosis

All Races, Both Sexes, 2001-2006

Site	All Ages		Ages 0-19		Ages 20-64		Ages 65+	
	Count	Percent (95% C.I.)	Percent (95% C.I.)	Percent (95% C.I.)	Percent (95% C.I.)	Percent (95% C.I.)		
2(b) Non-Hodgkin lymphoma, T-cell	7,759	65.6 (64.4 , 66.8)	77.1 (74.1 , 79.8)	69.2 (67.7 , 70.7)	53.9 (51.5 , 56.3)			
2(b) 1. Precursor Non-Hodgkin lymphoma, T-cell	1,167	63.1 (60.1 , 66.0)	77.4 (73.8 , 80.7)	48.8 (43.8 , 53.6)	11.8 (3.6 , 25.2)			
2(b) 2. Mature Non-Hodgkin lymphoma, T-cell	6,501	66.5 (65.1 , 67.8)	77.0 (71.6 , 81.6)	72.2 (70.6 , 73.7)	55.1 (52.6 , 57.5)			
2(b) 2.1. Mycosis fungoides/Sezary syndrome	1,735	92.9 (91.0 , 94.5)	97.5 (83.4 , 99.7)	95.5 (93.7 , 96.8)	87.0 (81.7 , 90.8)			
2(b) 2.1.1. Mycosis fungoides	1,699	93.3 (91.4 , 94.9)	97.5 (83.4 , 99.7)	95.7 (93.9 , 97.0)	87.7 (82.4 , 91.5)			
2(b) 2.1.2. Sezary syndrome	36	71.3 (49.6 , 85.0)	- (- , -)	- (- , -)	- (- , -)			
2(b) 2.2. Peripheral T-cell lymphoma	4,161	59.2 (57.4 , 60.8)	77.1 (71.1 , 82.1)	65.2 (63.0 , 67.2)	46.6 (43.6 , 49.5)			
2(b) 2.2.1. Peripheral T-cell lymphoma, NOS ^c	1,417	42.8 (39.9 , 45.6)	64.6 (47.3 , 77.5)	49.2 (45.4 , 53.0)	32.0 (27.8 , 36.3)			
2(b) 2.2.2. Angioimmunoblastic T-cell lymphoma	414	46.2 (40.4 , 51.8)	- (- , -)	54.9 (46.7 , 62.4)	38.1 (30.3 , 45.8)			
2(b) 2.2.3. Subcutaneous panniculitis-like T-cell lymphoma	52	60.6 (45.0 , 73.0)	- (- , -)	71.4 (50.1 , 84.9)	- (- , -)			
2(b) 2.2.4. Anaplastic large cell lymphoma, T-cell or null-cell type	1,037	58.6 (55.2 , 61.8)	79.7 (72.1 , 85.4)	61.6 (57.2 , 65.6)	38.6 (32.1 , 45.2)			
2(b) 2.2.5. Hepatosplenic T-cell lymphoma	34	19.6 (6.1 , 38.8)	- (- , -)	30.3 (10.5 , 53.3)	- (- , -)			
2(b) 2.2.6. Enteropathy-type T-cell lymphoma	43	21.2 (9.4 , 36.2)	- (- , -)	- (- , -)	- (- , -)			
2(b) 2.2.7. Cutaneous T-cell lymphoma, NOS ^c	812	84.7 (81.1 , 87.7)	- (- , -)	90.9 (87.2 , 93.5)	74.3 (67.1 , 80.2)			
2(b) 2.2.8. Primary cutaneous anaplastic large cell lymphoma	352	90.4 (85.0 , 94.0)	- (- , -)	92.5 (87.0 , 95.8)	86.4 (73.2 , 93.4)			
2(b) 2.3. Adult T-cell leukemia/lymphoma	143	31.6 (23.2 , 40.3)	- (- , -)	33.6 (21.5 , 46.0)	26.1 (15.0 , 38.6)			
2(b) 2.4. NK ^c /T-cell lymphoma, nasal-type/aggressive NK ^c -cell leukemia	269	35.4 (29.1 , 41.8)	- (- , -)	36.0 (28.6 , 43.5)	34.1 (21.7 , 46.7)			
2(b) 2.5. T-cell large granular lymphocytic leukemia	95	76.7 (63.4 , 85.8)	- (- , -)	88.2 (72.0 , 95.3)	64.6 (43.9 , 79.3)			
2(b) 2.6. Prolymphocytic leukemia, T-cell	98	29.9 (20.2 , 40.2)	- (- , -)	36.4 (22.1 , 50.8)	22.8 (11.1 , 37.1)			
2(b) 3. Non-Hodgkin lymphoma, NOS ^c , T-cell	91	39.4 (28.8 , 49.9)	- (- , -)	42.1 (28.2 , 55.4)	38.7 (22.1 , 55.1)			
2(c) Non-Hodgkin lymphoma, unknown lineage	2,756	64.4 (62.4 , 66.5)	88.2 (85.8 , 90.3)	56.7 (53.1 , 60.1)	47.4 (43.6 , 51.1)			
2(c) 1. Precursor lymphoblastic leukemia/lymphoma, unknown lineage	1,359	67.3 (64.6 , 69.9)	88.5 (86.1 , 90.6)	33.6 (28.1 , 39.3)	13.7 (8.5 , 20.0)			
2(c) 2. Prolymphocytic leukemia, unknown lineage	53	50.8 (34.2 , 65.2)	- (- , -)	- (- , -)	43.5 (23.3 , 62.2)			
2(c) 3. Non-Hodgkin lymphoma, NOS ^c , unknown lineage	1,344	61.8 (58.6 , 64.8)	- (- , -)	70.4 (66.0 , 74.4)	55.3 (50.8 , 59.5)			
2(*) 1. Total precursor lymphoma/leukemia ^d	7,482	69.2 (68.1 , 70.3)	88.5 (87.5 , 89.4)	40.3 (38.1 , 42.6)	14.2 (11.1 , 17.7)			
3 Composite Hodgkin lymphoma and Non-Hodgkin lymphoma	47	72.8 (54.6 , 84.6)	- (- , -)	- (- , -)	- (- , -)			
4 Lymphoid neoplasm, NOS ^c	3,961	53.6 (51.8 , 55.4)	78.1 (60.8 , 88.4)	62.9 (60.3 , 65.4)	45.8 (43.3 , 48.3)			

^a Morton LM, Turner JJ, Cerhan JR, Linet MS, Treseler PA, Clarke CA, Jack A, Cozen W, Maynadié M, Spinelli JJ, Costantini AS, Rüdiger T, Scarpa A, Zheng T, Weisenburger DD. Proposed classification of lymphoid neoplasms for epidemiologic research from the Pathology Working Group of the International Lymphoma Epidemiology Consortium (InterLymph). *Blood*. 2007;110:695-708.

^b SEER 17 areas (San Francisco, Connecticut, Detroit, Hawaii, Iowa, New Mexico, Seattle, Utah, Atlanta, San Jose-Monterey, Los Angeles, Alaska Native Registry, Rural Georgia, California excluding SF/SJM/LA, Kentucky, Louisiana and New Jersey).

^c NOS = Not otherwise specified. MALT = Mucosa-associated lymphoid tissue. NK = Natural killer.

^d Total precursor lymphoma/leukemia is comprised of categories 2(a)1., 2(b)1., and 2(c)1.

- Statistic not displayed due to less than 25 cases.

Table 19.30
All Lymphoid Neoplasms With Detailed Non-Hodgkin Lymphoma Subtypes

SEER^b 3-Year Relative Survival (Percent) by Age at Diagnosis

All Races, Males, 2001-2006

Site	All Ages		Ages 0-19		Ages 20-64		Ages 65+	
	Count	Percent (95% C.I.)	Percent (95% C.I.)	Percent (95% C.I.)	Percent (95% C.I.)	Percent (95% C.I.)	Percent (95% C.I.)	
Lymphoid Neoplasm	69,634	71.6 (71.2 , 72.0)	88.1 (87.1 , 89.1)	76.5 (76.0 , 77.0)	62.1 (61.4 , 62.9)			
1 Hodgkin Lymphoma	6,298	86.4 (85.4 , 87.4)	96.6 (94.8 , 97.7)	89.4 (88.4 , 90.4)	54.4 (50.0 , 58.5)			
2 Non-Hodgkin lymphoma	61,264	70.6 (70.1 , 71.0)	86.2 (85.0 , 87.4)	75.1 (74.5 , 75.6)	62.9 (62.2 , 63.6)			
2(a) Non-Hodgkin lymphoma, B-cell	55,099	71.2 (70.8 , 71.7)	89.2 (87.7 , 90.4)	76.3 (75.7 , 76.8)	63.6 (62.8 , 64.3)			
2(a) 1. Precursor Non-Hodgkin lymphoma, B-cell	2,754	70.6 (68.7 , 72.4)	89.6 (87.9 , 91.0)	37.5 (33.8 , 41.2)	14.8 (9.1 , 21.9)			
2(a) 2. Mature Non-Hodgkin lymphoma, B-cell	50,208	71.5 (71.0 , 71.9)	87.8 (84.6 , 90.4)	77.7 (77.1 , 78.3)	64.0 (63.2 , 64.8)			
2(a) 2.1. Chronic/Small/Prolymphocytic/ Mantle B-cell Non-Hodgkin lymphoma	12,959	81.7 (80.8 , 82.6)	- (- , -)	88.2 (87.2 , 89.2)	76.6 (75.1 , 77.9)			
2(a) 2.1.1. Chronic/Small lymphocytic leukemia/lymphoma	11,218	84.4 (83.4 , 85.3)	- (- , -)	90.7 (89.6 , 91.7)	79.5 (78.0 , 81.0)			
2(a) 2.1.2. Prolymphocytic leukemia, B-cell	56	64.2 (46.8 , 77.2)	- (- , -)	- (- , -)	59.9 (38.0 , 76.2)			
2(a) 2.1.3. Mantle-cell lymphoma	1,685	64.8 (61.9 , 67.6)	- (- , -)	74.7 (71.0 , 77.9)	55.2 (50.9 , 59.3)			
2(a) 2.2. Lymphoplasmacytic lymphoma/ Waldenstrom macroglobulinemia	1,224	80.2 (76.9 , 83.0)	- (- , -)	85.5 (81.2 , 88.9)	76.7 (72.0 , 80.6)			
2(a) 2.2.1. Lymphoplasmacytic lymphoma	478	77.6 (72.2 , 82.1)	- (- , -)	80.5 (73.3 , 85.9)	74.7 (66.8 , 81.1)			
2(a) 2.2.2. Waldenstrom macroglobulinemia	746	81.8 (77.5 , 85.4)	- (- , -)	89.3 (83.6 , 93.0)	77.8 (71.9 , 82.6)			
2(a) 2.3. Diffuse large B-cell lymphoma (DLBCL)	13,414	62.5 (61.5 , 63.4)	88.5 (82.9 , 92.4)	68.6 (67.4 , 69.7)	52.8 (51.2 , 54.4)			
2(a) 2.3.1. DLBCL, NOS ^c	13,319	62.4 (61.4 , 63.4)	88.4 (82.8 , 92.3)	68.5 (67.3 , 69.6)	52.8 (51.2 , 54.4)			
2(a) 2.3.2. Intravascular large B-cell lymphoma	-	- (- , -)	- (- , -)	- (- , -)	- (- , -)			
2(a) 2.3.3. Primary effusion lymphoma	-	- (- , -)	- (- , -)	- (- , -)	- (- , -)			
2(a) 2.3.4. Mediastinal large B-cell lymphoma	61	91.3 (78.5 , 96.6)	- (- , -)	93.8 (79.9 , 98.2)	- (- , -)			
2(a) 2.4. Burkitt lymphoma/leukemia	1,175	57.0 (53.9 , 59.9)	85.7 (80.9 , 89.4)	50.6 (46.7 , 54.3)	32.8 (25.0 , 40.7)			
2(a) 2.5. Marginal-zone lymphoma (MZL)	2,780	91.7 (89.9 , 93.1)	- (- , -)	93.8 (92.0 , 95.2)	88.9 (85.5 , 91.5)			
2(a) 2.5.1. Splenic MZL	189	84.4 (75.6 , 90.3)	- (- , -)	87.4 (76.4 , 93.5)	80.2 (65.1 , 89.2)			
2(a) 2.5.2. Extranodal MZL, MALT ^c type	1,745	94.6 (92.4 , 96.2)	- (- , -)	95.1 (93.0 , 96.6)	93.6 (88.8 , 96.4)			
2(a) 2.5.3. Nodal MZL	846	87.0 (83.3 , 89.9)	- (- , -)	92.0 (88.0 , 94.7)	81.1 (74.6 , 86.0)			
2(a) 2.6. Follicular lymphoma	6,758	87.9 (86.8 , 88.9)	95.4 (70.1 , 99.4)	91.4 (90.3 , 92.4)	81.6 (79.2 , 83.7)			
2(a) 2.7. Hairy-cell leukemia	907	96.1 (93.2 , 97.7)	- (- , -)	97.9 (95.6 , 99.0)	90.8 (81.8 , 95.5)			
2(a) 2.8. Plasma cell neoplasms	10,980	53.6 (52.5 , 54.8)	- (- , -)	64.0 (62.5 , 65.5)	44.4 (42.9 , 46.0)			
2(a) 2.8.1. Plasmacytoma	782	78.5 (74.7 , 81.8)	- (- , -)	85.5 (81.4 , 88.8)	65.7 (58.5 , 72.0)			
2(a) 2.8.2. Multiple myeloma/ plasma-cell leukemia	10,198	51.6 (50.5 , 52.8)	- (- , -)	61.6 (60.0 , 63.2)	43.3 (41.7 , 44.8)			
2(a) 2.9. Heavy chain disease	-	- (- , -)	- (- , -)	- (- , -)	- (- , -)			
2(a) 3. Non-Hodgkin lymphoma, B-cell, NOS ^c	2,137	67.0 (64.5 , 69.4)	87.7 (66.2 , 95.9)	72.7 (69.5 , 75.7)	60.7 (56.8 , 64.4)			

^a Morton LM, Turner JJ, Cerhan JR, Linet MS, Treseler PA, Clarke CA, Jack A, Cozen W, Maynadié M, Spinelli JJ, Costantini AS, Rüdiger T, Scarpa A, Zheng T, Weisenburger DD. Proposed classification of lymphoid neoplasms for epidemiologic research from the Pathology Working Group of the International Lymphoma Epidemiology Consortium (InterLymph). Blood. 2007;110:695-708.

^b SEER 17 areas (San Francisco, Connecticut, Detroit, Hawaii, Iowa, New Mexico, Seattle, Utah, Atlanta, San Jose-Monterey, Los Angeles, Alaska Native Registry, Rural Georgia, California excluding SF/SJM/LA, Kentucky, Louisiana and New Jersey).

^c NOS = Not otherwise specified. MALT = Mucosa-associated lymphoid tissue. NK = Natural killer.

- Statistic not displayed due to less than 25 cases.

Table 19.30 - continued
All Lymphoid Neoplasms With Detailed Non-Hodgkin Lymphoma Subtypes

SEER^b 3-Year Relative Survival (Percent) by Age at Diagnosis

All Races, Males, 2001-2006

Site	All Ages		Ages 0-19		Ages 20-64		Ages 65+	
	Count	Percent (95% C.I.)	Percent (95% C.I.)	Percent (95% C.I.)	Percent (95% C.I.)	Percent (95% C.I.)		
2(b) Non-Hodgkin lymphoma, T-cell	4,653	64.9 (63.3 , 66.5)	74.7 (70.9 , 78.0)	67.0 (65.0 , 68.9)	55.6 (52.3 , 58.8)			
2(b) 1. Precursor Non-Hodgkin lymphoma, T-cell	813	63.5 (59.8 , 66.9)	75.5 (71.1 , 79.4)	49.7 (43.7 , 55.5)	- (- , -)			
2(b) 2. Mature Non-Hodgkin lymphoma, T-cell	3,791	65.6 (63.8 , 67.3)	73.4 (65.8 , 79.6)	69.8 (67.7 , 71.8)	56.8 (53.4 , 60.0)			
2(b) 2.1. Mycosis fungoides/Sezary syndrome	984	93.1 (90.1 , 95.1)	- (- , -)	95.1 (92.3 , 96.9)	89.2 (82.0 , 93.6)			
2(b) 2.1.1. Mycosis fungoides	966	93.5 (90.6 , 95.6)	- (- , -)	95.5 (92.8 , 97.3)	89.6 (82.3 , 94.0)			
2(b) 2.1.2. Sezary syndrome	-	- (- , -)	- (- , -)	- (- , -)	- (- , -)			
2(b) 2.2. Peripheral T-cell lymphoma	2,462	58.4 (56.1 , 60.6)	73.5 (65.3 , 80.1)	63.5 (60.7 , 66.1)	46.3 (42.3 , 50.2)			
2(b) 2.2.1. Peripheral T-cell lymphoma, NOS ^c	849	44.2 (40.4 , 47.8)	69.8 (48.2 , 83.8)	48.3 (43.5 , 53.0)	34.8 (28.9 , 40.7)			
2(b) 2.2.2. Angioimmunoblastic T-cell lymphoma	216	44.8 (36.8 , 52.4)	- (- , -)	54.8 (43.8 , 64.4)	33.3 (22.6 , 44.4)			
2(b) 2.2.3. Subcutaneous panniculitis-like T-cell lymphoma	-	- (- , -)	- (- , -)	- (- , -)	- (- , -)			
2(b) 2.2.4. Anaplastic large cell lymphoma, T-cell or null-cell type	672	57.6 (53.4 , 61.6)	75.7 (65.5 , 83.3)	59.8 (54.5 , 64.7)	38.4 (29.7 , 47.0)			
2(b) 2.2.5. Hepatosplenic T-cell lymphoma	-	- (- , -)	- (- , -)	- (- , -)	- (- , -)			
2(b) 2.2.6. Enteropathy-type T-cell lymphoma	27	16.2 (4.4 , 34.6)	- (- , -)	- (- , -)	- (- , -)			
2(b) 2.2.7. Cutaneous T-cell lymphoma, NOS ^c	470	84.0 (79.1 , 87.9)	- (- , -)	90.9 (85.9 , 94.2)	70.9 (60.5 , 79.0)			
2(b) 2.2.8. Primary cutaneous anaplastic large cell lymphoma	191	87.8 (79.3 , 92.9)	- (- , -)	91.5 (82.4 , 96.0)	82.8 (65.3 , 92.0)			
2(b) 2.3. Adult T-cell leukemia/lymphoma	76	34.8 (23.1 , 46.7)	- (- , -)	30.1 (16.2 , 45.3)	33.5 (15.0 , 53.2)			
2(b) 2.4. NK ^c /T-cell lymphoma, nasal-type/aggressive NK ^c -cell leukemia	169	33.1 (25.4 , 40.9)	- (- , -)	33.2 (24.6 , 42.1)	29.0 (13.3 , 46.7)			
2(b) 2.5. T-cell large granular lymphocytic leukemia	50	71.8 (52.5 , 84.4)	- (- , -)	- (- , -)	60.3 (33.6 , 79.0)			
2(b) 2.6. Prolymphocytic leukemia, T-cell	50	33.2 (19.7 , 47.2)	- (- , -)	47.8 (26.7 , 66.2)	18.3 (5.6 , 36.8)			
2(b) 3. Non-Hodgkin lymphoma, NOS ^c , T-cell	49	37.2 (23.4 , 51.0)	- (- , -)	38.8 (20.5 , 56.7)	- (- , -)			
2(c) Non-Hodgkin lymphoma, unknown lineage	1,512	64.4 (61.6 , 67.1)	87.7 (84.3 , 90.3)	54.2 (49.6 , 58.6)	47.2 (41.4 , 52.7)			
2(c) 1. Precursor lymphoblastic leukemia/lymphoma, unknown lineage	774	68.2 (64.6 , 71.6)	88.0 (84.7 , 90.7)	33.2 (26.1 , 40.5)	17.7 (9.7 , 27.7)			
2(c) 2. Prolymphocytic leukemia, unknown lineage	33	47.8 (28.1 , 65.2)	- (- , -)	- (- , -)	- (- , -)			
2(c) 3. Non-Hodgkin lymphoma, NOS ^c , unknown lineage	705	60.6 (56.1 , 64.7)	- (- , -)	66.2 (60.5 , 71.3)	54.3 (47.4 , 60.6)			
2(*) 1. Total precursor lymphoma/leukemia ^d	4,341	68.9 (67.4 , 70.3)	86.9 (85.5 , 88.2)	40.0 (37.0 , 42.8)	15.1 (10.5 , 20.4)			
3 Composite Hodgkin lymphoma and Non-Hodgkin lymphoma	-	- (- , -)	- (- , -)	- (- , -)	- (- , -)			
4 Lymphoid neoplasm, NOS ^c	2,053	53.2 (50.7 , 55.7)	75.9 (54.0 , 88.4)	58.3 (54.9 , 61.6)	47.2 (43.4 , 50.9)			

^a Morton LM, Turner JJ, Cerhan JR, Linet MS, Treseler PA, Clarke CA, Jack A, Cozen W, Maynadié M, Spinelli JJ, Costantini AS, Rüdiger T, Scarpa A, Zheng T, Weisenburger DD. Proposed classification of lymphoid neoplasms for epidemiologic research from the Pathology Working Group of the International Lymphoma Epidemiology Consortium (InterLymph). *Blood*. 2007;110:695-708.

^b SEER 17 areas (San Francisco, Connecticut, Detroit, Hawaii, Iowa, New Mexico, Seattle, Utah, Atlanta, San Jose-Monterey, Los Angeles, Alaska Native Registry, Rural Georgia, California excluding SF/SJM/LA, Kentucky, Louisiana and New Jersey).

^c NOS = Not otherwise specified. MALT = Mucosa-associated lymphoid tissue. NK = Natural killer.

^d Total precursor lymphoma/leukemia is comprised of categories 2(a)1., 2(b)1., and 2(c)1.

- Statistic not displayed due to less than 25 cases.

Table 19.31
All Lymphoid Neoplasms With Detailed Non-Hodgkin Lymphoma Subtypes

SEER^b 3-Year Relative Survival (Percent) by Age at Diagnosis

All Races, Females, 2001-2006

Site	All Ages		Ages 0-19		Ages 20-64		Ages 65+	
	Count	Percent (95% C.I.)	Percent (95% C.I.)	Percent (95% C.I.)	Percent (95% C.I.)	Percent (95% C.I.)	Percent (95% C.I.)	
Lymphoid Neoplasm	57,732	72.8 (72.4 , 73.2)	90.8 (89.6 , 91.8)	81.7 (81.2 , 82.3)	62.6 (61.9 , 63.3)			
1 Hodgkin Lymphoma	5,302	88.4 (87.4 , 89.4)	95.9 (94.0 , 97.3)	93.1 (92.2 , 94.0)	56.1 (51.8 , 60.1)			
2 Non-Hodgkin lymphoma	50,494	71.7 (71.2 , 72.2)	89.3 (87.9 , 90.6)	79.9 (79.2 , 80.5)	63.6 (62.8 , 64.3)			
2(a) Non-Hodgkin lymphoma, B-cell	46,144	72.3 (71.8 , 72.8)	90.6 (89.0 , 92.0)	80.9 (80.2 , 81.5)	64.4 (63.6 , 65.1)			
2(a) 1. Precursor Non-Hodgkin lymphoma, B-cell	2,202	71.8 (69.7 , 73.8)	92.2 (90.6 , 93.6)	40.8 (36.5 , 45.0)	14.6 (9.3 , 21.0)			
2(a) 2. Mature Non-Hodgkin lymphoma, B-cell	41,948	72.3 (71.8 , 72.8)	82.1 (76.8 , 86.4)	82.4 (81.7 , 83.0)	64.7 (63.9 , 65.4)			
2(a) 2.1. Chronic/Small/Prolymphocytic/ Mantle B-cell Non-Hodgkin lymphoma	8,740	83.9 (82.8 , 85.0)	- (- , -)	92.6 (91.3 , 93.7)	79.6 (78.1 , 81.1)			
2(a) 2.1.1. Chronic/Small lymphocytic leukemia/lymphoma	7,967	86.2 (85.1 , 87.3)	- (- , -)	94.8 (93.6 , 95.8)	82.0 (80.4 , 83.5)			
2(a) 2.1.2. Prolymphocytic leukemia, B-cell	48	42.5 (26.3 , 57.7)	- (- , -)	- (- , -)	34.0 (15.7 , 53.3)			
2(a) 2.1.3. Mantle-cell lymphoma	725	62.0 (57.5 , 66.2)	- (- , -)	73.8 (67.1 , 79.3)	54.9 (49.1 , 60.4)			
2(a) 2.2. Lymphoplasmacytic lymphoma/ Waldenstrom macroglobulinemia	894	83.2 (79.6 , 86.3)	- (- , -)	88.8 (83.9 , 92.3)	80.1 (75.0 , 84.2)			
2(a) 2.2.1. Lymphoplasmacytic lymphoma	404	82.6 (76.9 , 87.0)	- (- , -)	85.4 (77.0 , 90.9)	81.0 (73.2 , 86.7)			
2(a) 2.2.2. Waldenstrom macroglobulinemia	490	83.4 (78.3 , 87.4)	- (- , -)	91.5 (84.8 , 95.4)	78.7 (71.6 , 84.2)			
2(a) 2.3. Diffuse large B-cell lymphoma (DLBCL)	11,757	63.5 (62.4 , 64.5)	79.1 (71.5 , 85.0)	75.2 (73.8 , 76.5)	54.0 (52.6 , 55.4)			
2(a) 2.3.1. DLBCL, NOS ^c	11,672	63.4 (62.4 , 64.4)	79.9 (72.1 , 85.7)	75.1 (73.7 , 76.4)	54.0 (52.6 , 55.5)			
2(a) 2.3.2. Intravascular large B-cell lymphoma	-	- (- , -)	- (- , -)	- (- , -)	- (- , -)			
2(a) 2.3.3. Primary effusion lymphoma	-	- (- , -)	- (- , -)	- (- , -)	- (- , -)			
2(a) 2.3.4. Mediastinal large B-cell lymphoma	72	81.0 (68.0 , 89.1)	- (- , -)	85.9 (72.2 , 93.2)	- (- , -)			
2(a) 2.4. Burkitt lymphoma/leukemia	420	53.3 (48.0 , 58.3)	84.1 (73.6 , 90.7)	55.9 (48.4 , 62.8)	30.5 (22.2 , 39.1)			
2(a) 2.5. Marginal-zone lymphoma (MZL)	3,466	92.7 (91.2 , 93.9)	- (- , -)	97.7 (96.5 , 98.5)	87.9 (85.4 , 90.1)			
2(a) 2.5.1. Splenic MZL	229	85.4 (77.6 , 90.6)	- (- , -)	97.4 (87.5 , 99.5)	75.5 (63.6 , 84.0)			
2(a) 2.5.2. Extranodal MZL, MALT ^c type	2,244	95.9 (94.2 , 97.2)	- (- , -)	98.7 (97.4 , 99.4)	92.8 (89.5 , 95.1)			
2(a) 2.5.3. Nodal MZL	993	86.4 (83.1 , 89.2)	- (- , -)	93.9 (90.3 , 96.3)	80.6 (75.6 , 84.8)			
2(a) 2.6. Follicular lymphoma	6,872	89.2 (88.1 , 90.1)	- (- , -)	93.9 (92.9 , 94.8)	83.6 (81.6 , 85.3)			
2(a) 2.7. Hairy-cell leukemia	246	94.4 (88.0 , 97.4)	- (- , -)	97.4 (91.9 , 99.2)	89.1 (73.0 , 95.8)			
2(a) 2.8. Plasma cell neoplasms	9,547	52.0 (50.8 , 53.2)	- (- , -)	65.9 (64.2 , 67.6)	43.0 (41.5 , 44.5)			
2(a) 2.8.1. Plasmacytoma	491	75.2 (70.2 , 79.6)	- (- , -)	84.0 (77.9 , 88.6)	65.7 (58.0 , 72.3)			
2(a) 2.8.2. Multiple myeloma/ plasma-cell leukemia	9,056	50.8 (49.5 , 52.0)	- (- , -)	64.6 (62.7 , 66.4)	42.0 (40.4 , 43.5)			
2(a) 2.9. Heavy chain disease	-	- (- , -)	- (- , -)	- (- , -)	- (- , -)			
2(a) 3. Non-Hodgkin lymphoma, B-cell, NOS ^c	1,994	71.9 (69.3 , 74.2)	- (- , -)	79.9 (76.3 , 82.9)	66.7 (63.2 , 69.9)			

^a Morton LM, Turner JJ, Cerhan JR, Linet MS, Treseler PA, Clarke CA, Jack A, Cozen W, Maynadié M, Spinelli JJ, Costantini AS, Rüdiger T, Scarpa A, Zheng T, Weisenburger DD. Proposed classification of lymphoid neoplasms for epidemiologic research from the Pathology Working Group of the International Lymphoma Epidemiology Consortium (InterLymph). *Blood*. 2007;110:695-708.

^b SEER 17 areas (San Francisco, Connecticut, Detroit, Hawaii, Iowa, New Mexico, Seattle, Utah, Atlanta, San Jose-Monterey, Los Angeles, Alaska Native Registry, Rural Georgia, California excluding SF/SJM/LA, Kentucky, Louisiana and New Jersey).

^c NOS = Not otherwise specified. MALT = Mucosa-associated lymphoid tissue. NK = Natural killer.

- Statistic not displayed due to less than 25 cases.

Table 19.31 - continued
All Lymphoid Neoplasms With Detailed Non-Hodgkin Lymphoma Subtypes

SEER^b 3-Year Relative Survival (Percent) by Age at Diagnosis

All Races, Females, 2001-2006

Site	All Ages		Ages 0-19		Ages 20-64		Ages 65+	
	Count	Percent (95% C.I.)	Percent (95% C.I.)	Percent (95% C.I.)	Percent (95% C.I.)	Percent (95% C.I.)		
2(b) Non-Hodgkin lymphoma, T-cell	3,106	66.7 (64.8 , 68.6)	82.3 (77.2 , 86.4)	72.7 (70.3 , 74.9)	51.9 (48.2 , 55.3)			
2(b) 1. Precursor Non-Hodgkin lymphoma, T-cell	354	62.5 (56.8 , 67.6)	82.5 (75.5 , 87.6)	46.9 (38.0 , 55.3)	17.6 (5.0 , 36.6)			
2(b) 2. Mature Non-Hodgkin lymphoma, T-cell	2,710	67.7 (65.6 , 69.7)	82.2 (74.0 , 88.1)	75.8 (73.3 , 78.0)	53.0 (49.3 , 56.6)			
2(b) 2.1. Mycosis fungoides/Sezary syndrome	751	92.8 (89.9 , 94.9)	96.2 (75.6 , 99.5)	96.0 (93.3 , 97.6)	82.9 (74.6 , 88.7)			
2(b) 2.1.1. Mycosis fungoides	733	93.2 (90.2 , 95.2)	96.2 (75.6 , 99.5)	95.9 (93.2 , 97.5)	84.3 (75.8 , 90.0)			
2(b) 2.1.2. Sezary syndrome	-	- (- , -)	- (- , -)	- (- , -)	- (- , -)			
2(b) 2.2. Peripheral T-cell lymphoma	1,699	60.3 (57.6 , 62.9)	82.9 (73.2 , 89.4)	67.9 (64.5 , 71.1)	47.0 (42.6 , 51.2)			
2(b) 2.2.1. Peripheral T-cell lymphoma, NOS ^c	568	40.5 (35.9 , 44.9)	- (- , -)	50.7 (44.3 , 56.8)	28.4 (22.5 , 34.5)			
2(b) 2.2.2. Angioimmunoblastic T-cell lymphoma	198	47.8 (39.4 , 55.7)	- (- , -)	55.0 (42.3 , 66.1)	42.4 (31.3 , 53.0)			
2(b) 2.2.3. Subcutaneous panniculitis-like T-cell lymphoma	37	65.2 (46.3 , 78.8)	- (- , -)	- (- , -)	- (- , -)			
2(b) 2.2.4. Anaplastic large cell lymphoma, T-cell or null-cell type	365	60.2 (54.4 , 65.5)	86.7 (74.0 , 93.5)	65.5 (57.8 , 72.1)	38.5 (28.6 , 48.3)			
2(b) 2.2.5. Hepatosplenic T-cell lymphoma	-	- (- , -)	- (- , -)	- (- , -)	- (- , -)			
2(b) 2.2.6. Enteropathy-type T-cell lymphoma	-	- (- , -)	- (- , -)	- (- , -)	- (- , -)			
2(b) 2.2.7. Cutaneous T-cell lymphoma, NOS ^c	342	85.6 (79.7 , 89.8)	- (- , -)	90.5 (84.3 , 94.3)	78.1 (67.1 , 85.8)			
2(b) 2.2.8. Primary cutaneous anaplastic large cell lymphoma	161	93.1 (84.9 , 97.0)	- (- , -)	93.2 (84.8 , 97.0)	91.5 (60.9 , 98.4)			
2(b) 2.3. Adult T-cell leukemia/lymphoma	67	27.4 (16.0 , 40.2)	- (- , -)	38.1 (17.4 , 58.8)	20.4 (8.5 , 35.9)			
2(b) 2.4. NK ^c /T-cell lymphoma, nasal-type/aggressive NK ^c -cell leukemia	100	39.3 (28.4 , 50.0)	- (- , -)	41.0 (26.9 , 54.6)	38.1 (20.6 , 55.4)			
2(b) 2.5. T-cell large granular lymphocytic leukemia	45	81.0 (59.9 , 91.7)	- (- , -)	- (- , -)	- (- , -)			
2(b) 2.6. Prolymphocytic leukemia, T-cell	48	26.5 (13.5 , 41.5)	- (- , -)	- (- , -)	28.0 (9.8 , 49.8)			
2(b) 3. Non-Hodgkin lymphoma, NOS ^c , T-cell	42	41.7 (25.6 , 57.0)	- (- , -)	- (- , -)	- (- , -)			
2(c) Non-Hodgkin lymphoma, unknown lineage	1,244	64.5 (61.3 , 67.5)	89.0 (85.2 , 91.9)	60.7 (54.7 , 66.1)	47.7 (42.5 , 52.6)			
2(c) 1. Precursor lymphoblastic leukemia/lymphoma, unknown lineage	585	66.1 (61.8 , 70.1)	89.2 (85.4 , 92.1)	34.2 (25.5 , 43.1)	9.6 (4.1 , 17.9)			
2(c) 2. Prolymphocytic leukemia, unknown lineage	-	- (- , -)	- (- , -)	- (- , -)	- (- , -)			
2(c) 3. Non-Hodgkin lymphoma, NOS ^c , unknown lineage	639	63.1 (58.4 , 67.5)	- (- , -)	77.9 (70.7 , 83.5)	56.0 (50.1 , 61.5)			
2(*) 1. Total precursor lymphoma/leukemia ^d	3,141	69.7 (67.9 , 71.4)	90.7 (89.3 , 92.0)	40.9 (37.4 , 44.4)	13.4 (9.3 , 18.2)			
3 Composite Hodgkin lymphoma and Non-Hodgkin lymphoma	28	74.5 (50.6 , 88.1)	- (- , -)	- (- , -)	- (- , -)			
4 Lymphoid neoplasm, NOS ^c	1,908	54.0 (51.3 , 56.7)	- (- , -)	70.2 (66.1 , 73.9)	44.7 (41.3 , 48.0)			

^a Morton LM, Turner JJ, Cerhan JR, Linet MS, Treseler PA, Clarke CA, Jack A, Cozen W, Maynadié M, Spinelli JJ, Costantini AS, Rüdiger T, Scarpa A, Zheng T, Weisenburger DD. Proposed classification of lymphoid neoplasms for epidemiologic research from the Pathology Working Group of the International Lymphoma Epidemiology Consortium (InterLymph). *Blood*. 2007;110:695-708.

^b SEER 17 areas (San Francisco, Connecticut, Detroit, Hawaii, Iowa, New Mexico, Seattle, Utah, Atlanta, San Jose-Monterey, Los Angeles, Alaska Native Registry, Rural Georgia, California excluding SF/SJM/LA, Kentucky, Louisiana and New Jersey).

^c NOS = Not otherwise specified. MALT = Mucosa-associated lymphoid tissue. NK = Natural killer.

^d Total precursor lymphoma/leukemia is comprised of categories 2(a)1., 2(b)1., and 2(c)1.

- Statistic not displayed due to less than 25 cases.

SEER Observed Incidence, SEER Delay Adjusted Incidence and US Death Rates^a Non-Hodgkin Lymphoma, by Race and Sex

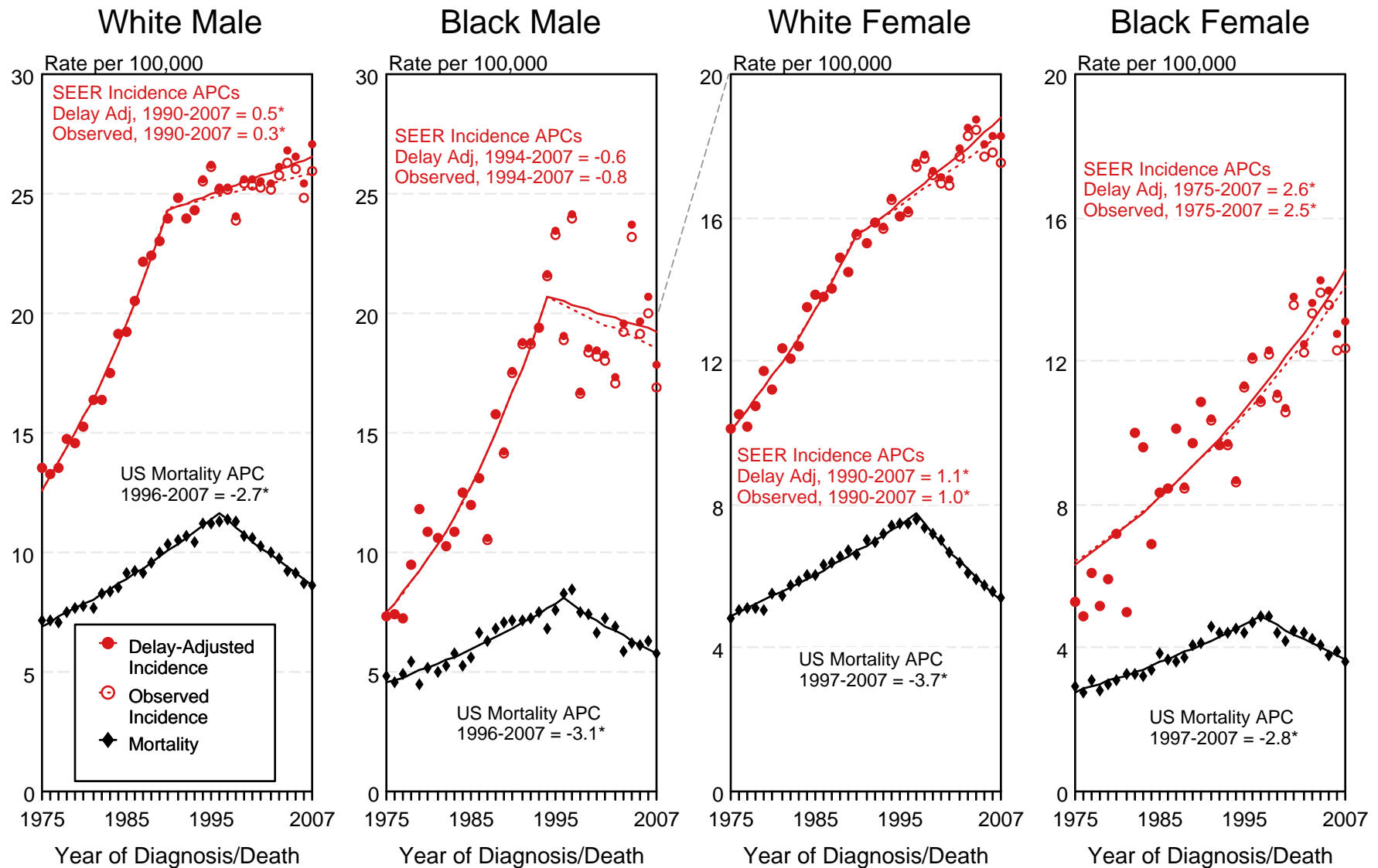


Figure 19.1

^a Source: SEER 9 areas and US Mortality Files (National Center for Health Statistics, CDC). Rates are age-adjusted to the 2000 US Std Population (19 age groups - Census P25-1103). Regression lines and APCs are calculated using the Joinpoint Regression Program Version 3.4.3, April 2010, National Cancer Institute. The APC is the Annual Percent Change for the regression line segments. The APC shown on the graph is for the most recent trend.
* The APC is significantly different from zero ($p < 0.05$).

SEER Incidence and US Death Rates^a Non-Hodgkin Lymphoma, Both Sexes

Joinpoint Analyses for Whites and Blacks from 1975-2007
and for Asian/Pacific Islanders, American Indians/Alaska Natives and Hispanics from 1992-2007

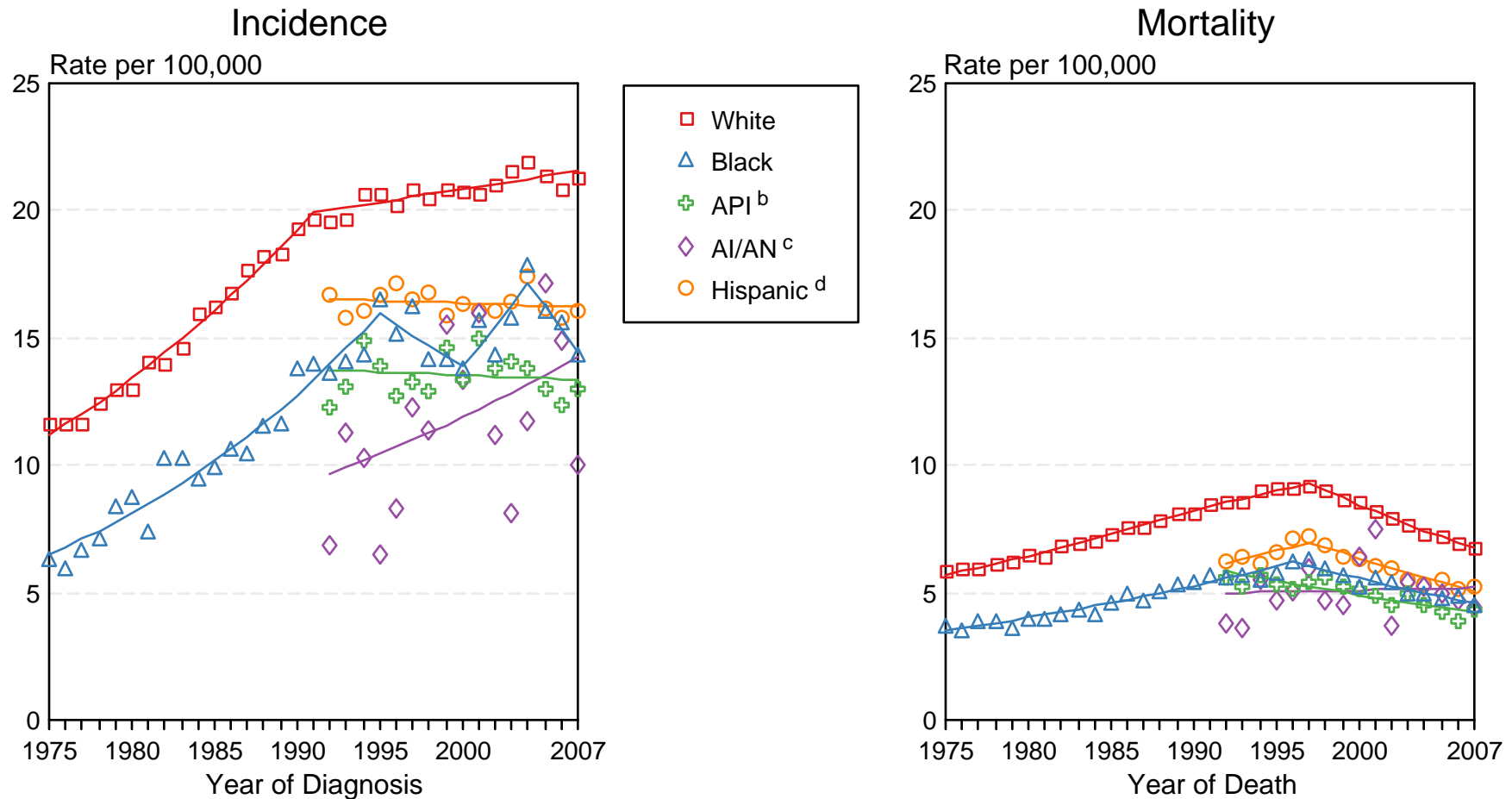


Figure 19.2

Source: Incidence data for whites and blacks are from the SEER 9 areas (San Francisco, Connecticut, Detroit, Hawaii, Iowa, New Mexico, Seattle, Utah, Atlanta). Incidence data for Asian/Pacific Islanders, American Indians/Alaska Natives and Hispanics are from the SEER 13 Areas (SEER 9 Areas, San Jose-Monterey, Los Angeles, Alaska Native Registry and Rural Georgia). Mortality data are from US Mortality Files, National Center for Health Statistics, CDC.

^a Rates are age-adjusted to the 2000 US Std Population (19 age groups - Census P25-1103).

Regression lines are calculated using the Joinpoint Regression Program Version 3.4.3, April 2010, National Cancer Institute. Joinpoint analyses for Whites and Blacks during the 1975-2007 period allow a maximum of 4 joinpoints. Analyses for other ethnic groups during the period 1992-2007 allow a maximum of 2 joinpoints.

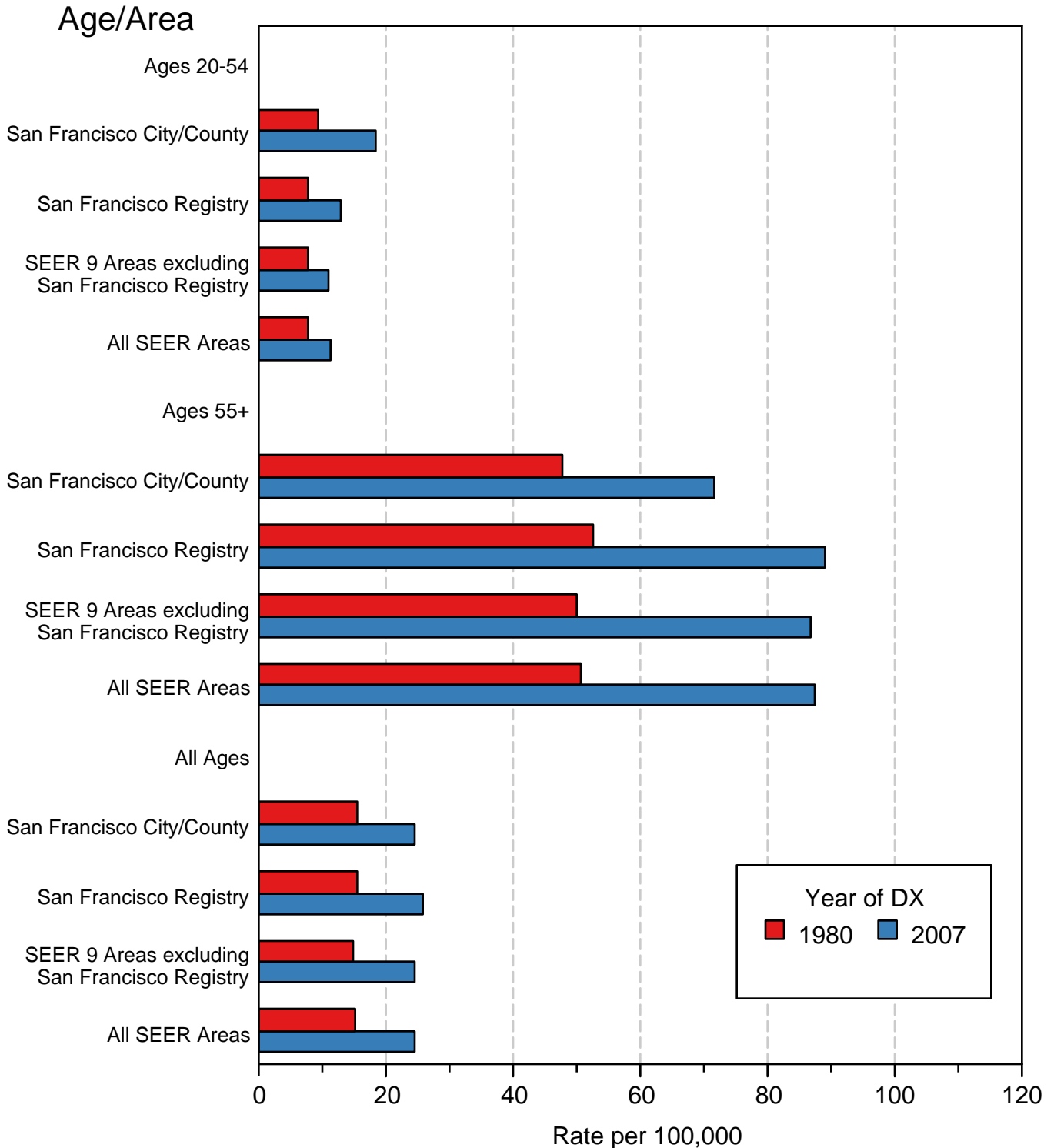
^b API = Asian/Pacific Islander.

^c AI/AN = American Indian/Alaska Native. Rates for American Indian/Alaska Native are based on the CHSDA(Contract Health Service Delivery Area) counties.

^d Hispanic is not mutually exclusive from whites, blacks, Asian/Pacific Islanders, and American Indians/Alaska Natives. Incidence data for Hispanics are based on NHIA and exclude cases from the Alaska Native Registry. Mortality data for Hispanics exclude cases from Connecticut, the District of Columbia, Maine, Maryland, Minnesota, New Hampshire, New York, North Dakota, Oklahoma, and Vermont.

Figure 19.3

Non-Hodgkin Lymphoma Incidence Rates, 1980 vs 2007 Males by Age at Diagnosis and SEER area



Source: SEER 9 areas. Rates are age-adjusted to the 2000 US Standard Population (19 age groups - Census P25-1103).

Non-Hodgkin Lymphoma SEER Incidence by Age 1975-1977 vs 2005-2007 All Races, Males

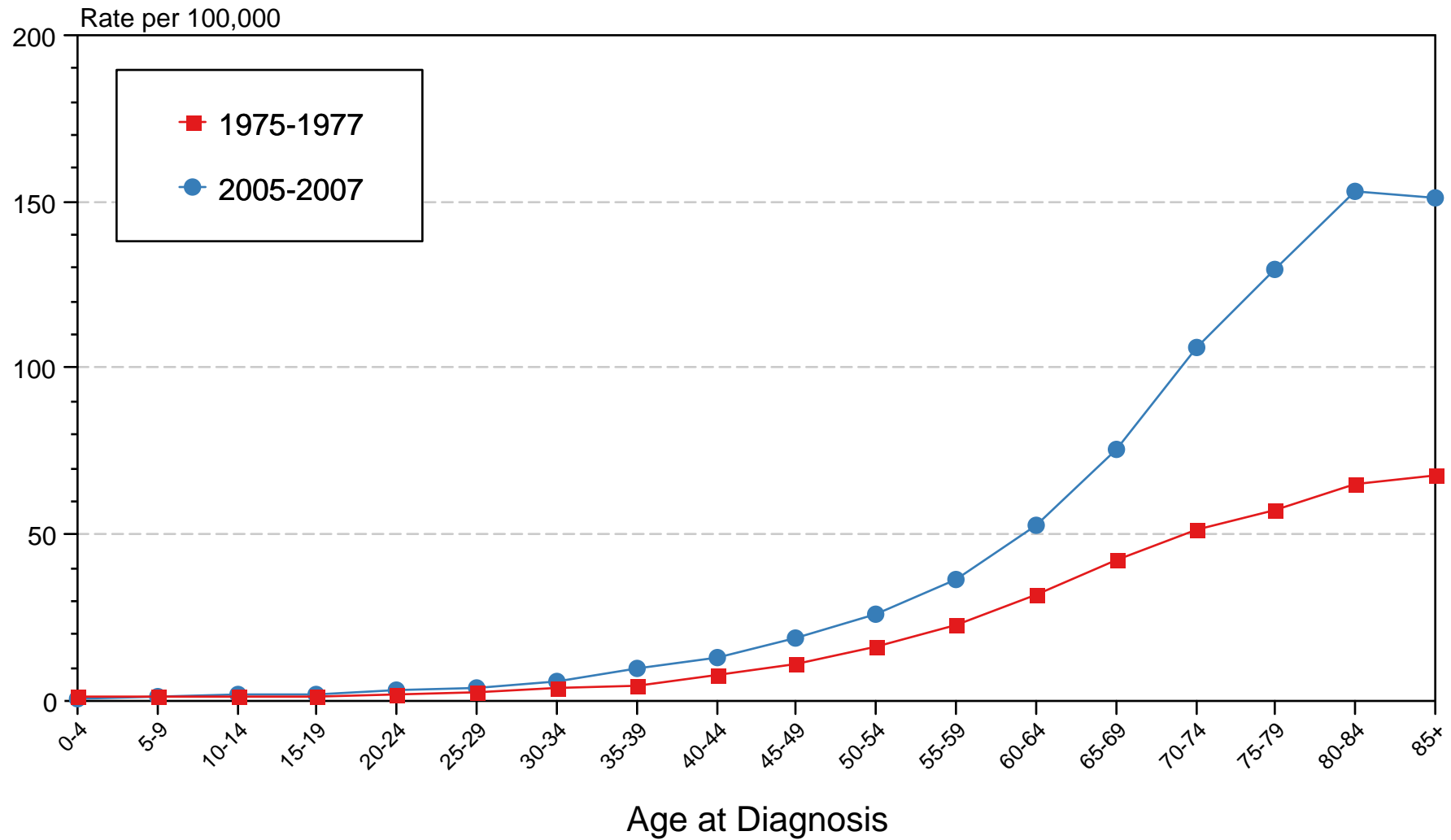


Figure 19.4

Source: SEER 9 areas. Rates are age-adjusted as appropriate to the 2000 US Std Population (19 age groups - Census P25-1103).

SEER Observed Incidence and SEER Delay Adjusted Incidence Rates^a SEER 9 Areas Compared to SEER 13 Areas Non-Hodgkin Lymphoma, Male, by Race

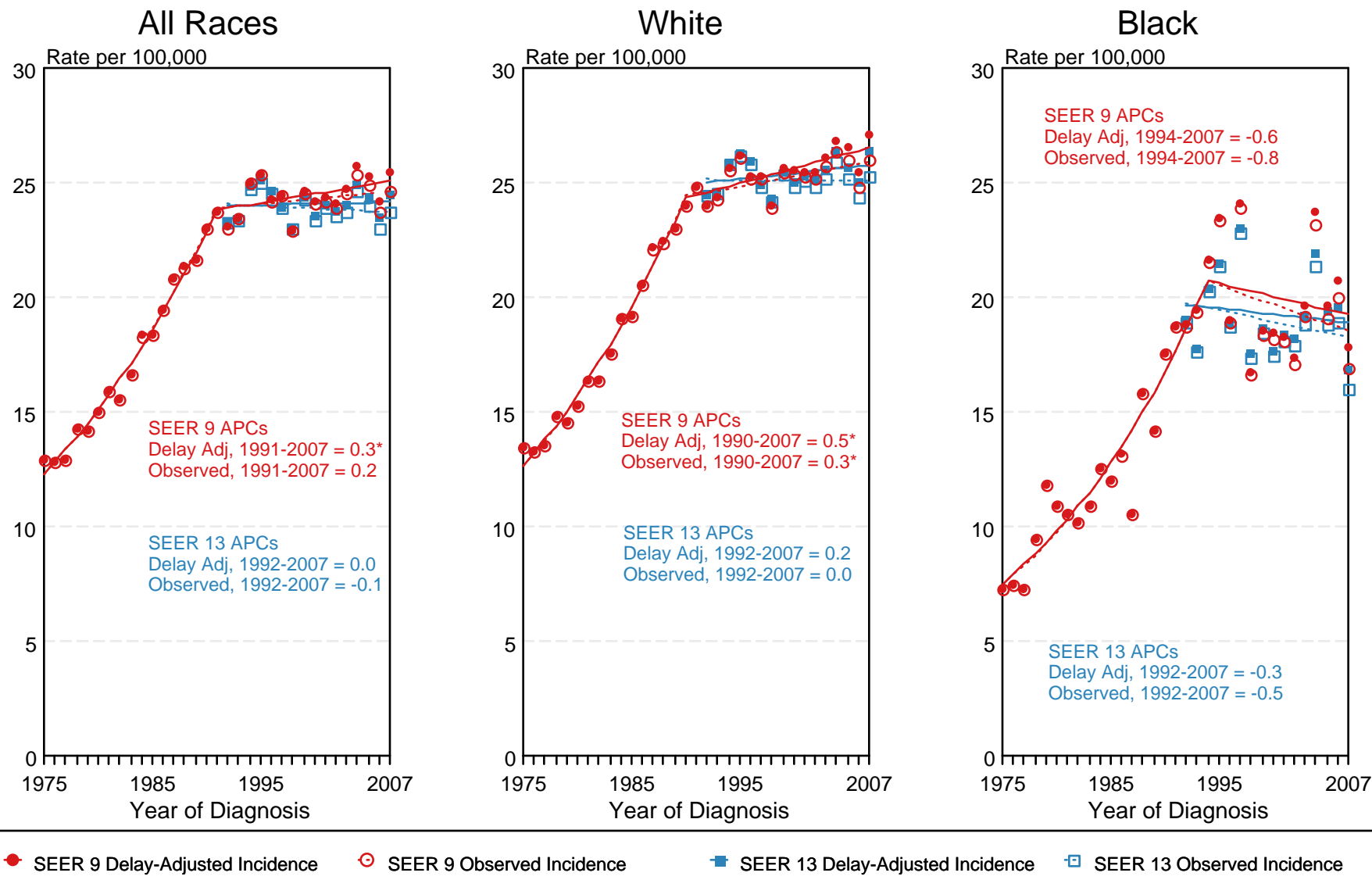


Figure 19.5

^a Source: SEER 9 areas and SEER 13 areas.
Rates are age-adjusted to the 2000 US Std Population (19 age groups - Census P25-1103).
Regression lines and APCs are calculated using the Joinpoint Regression Program Version 3.4.3, April 2010, National Cancer Institute.
The APC is the Annual Percent Change for the regression line segments. The APC shown on the graph is for the most recent trend.
* The APC is significantly different from zero ($p < 0.05$).

SEER Observed Incidence and SEER Delay Adjusted Incidence Rates^a SEER 9 Areas Compared to SEER 13 Areas Non-Hodgkin Lymphoma, Female, by Race

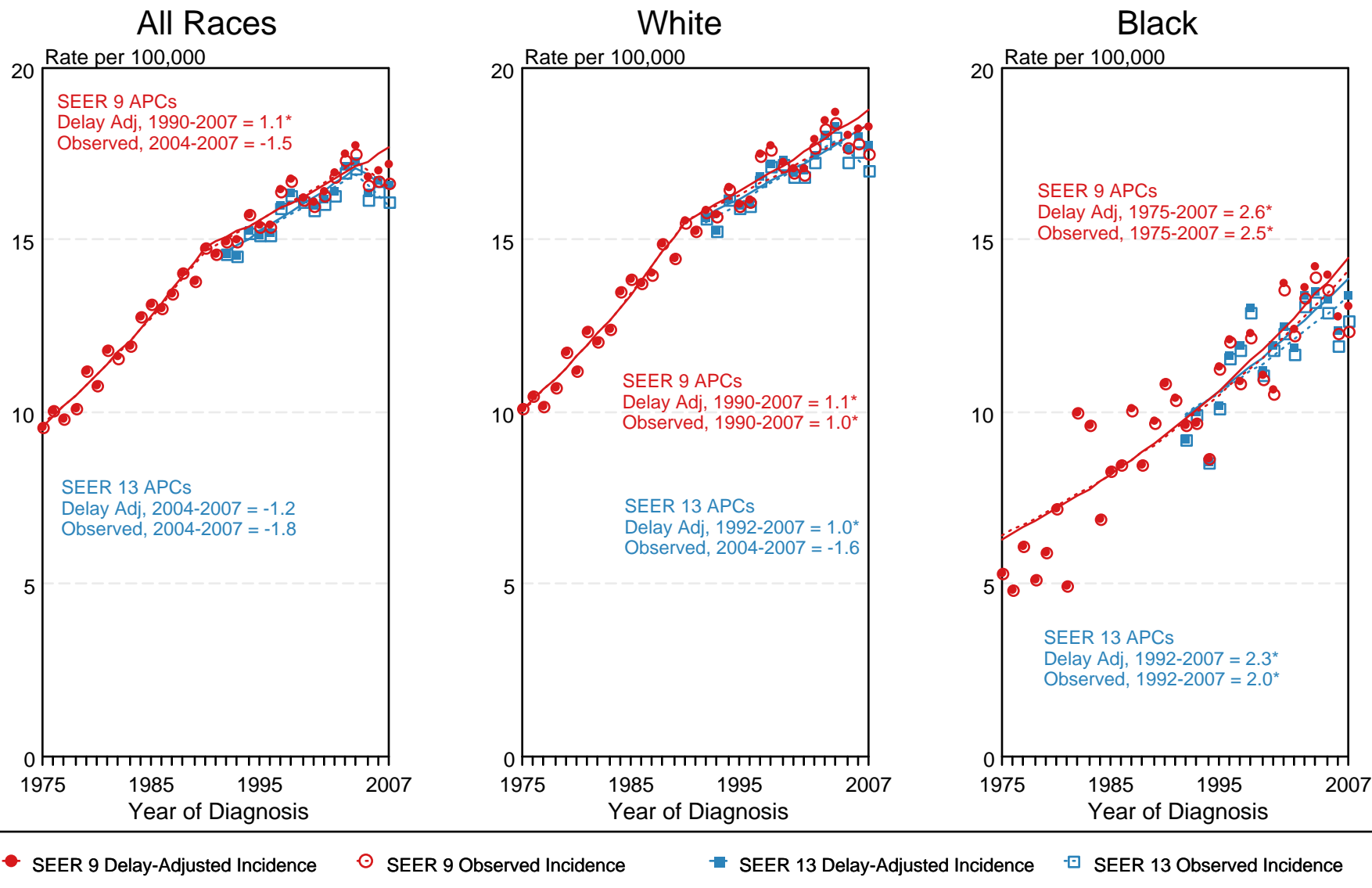


Figure 19.6

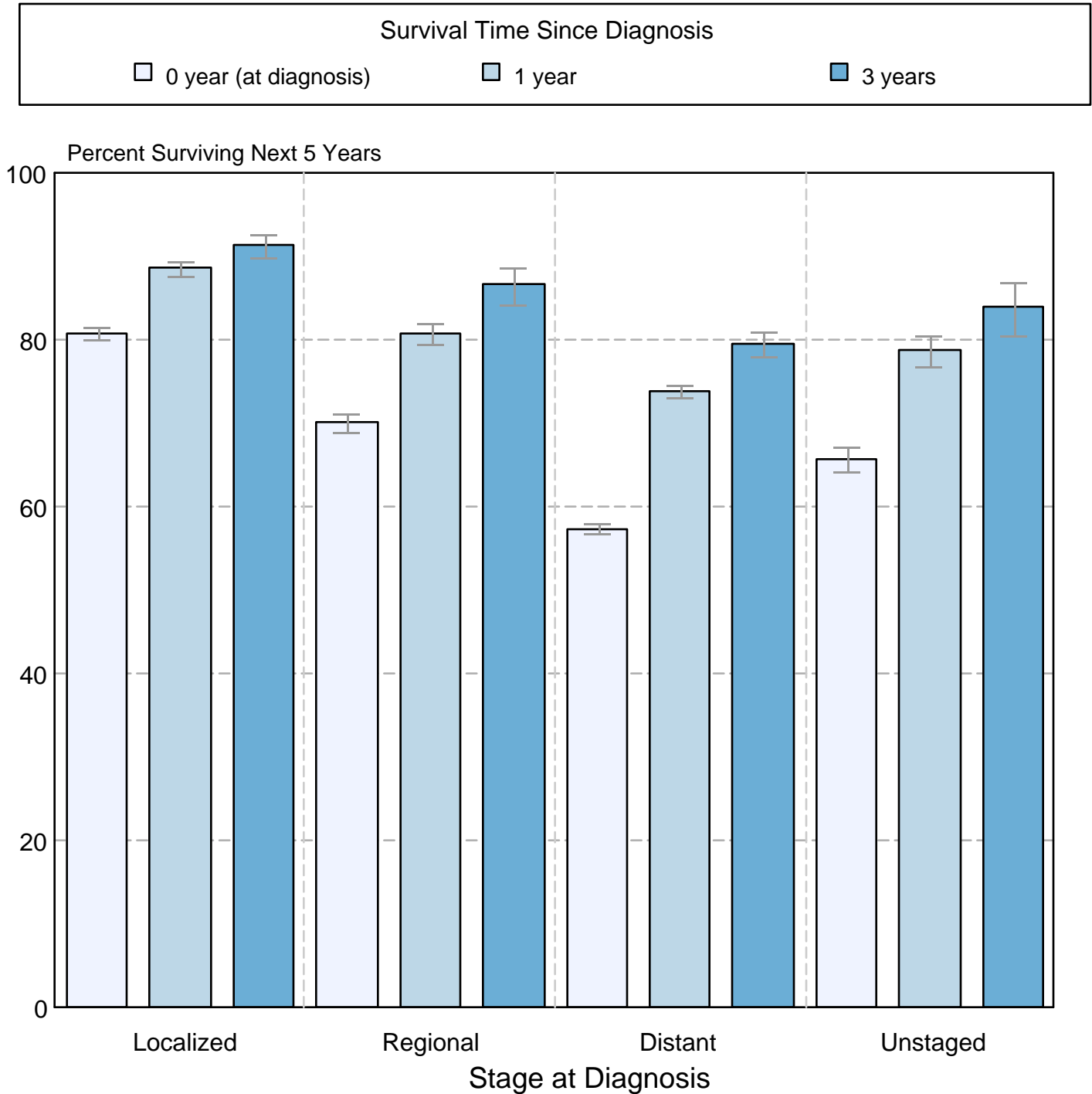
^a Source: SEER 9 areas and SEER 13 areas.
Rates are age-adjusted to the 2000 US Std Population (19 age groups - Census P25-1103).
Regression lines and APCs are calculated using the Joinpoint Regression Program Version 3.4.3, April 2010, National Cancer Institute.
The APC is the Annual Percent Change for the regression line segments. The APC shown on the graph is for the most recent trend.
* The APC is significantly different from zero ($p < 0.05$).

Figure 19.7

Non-Hodgkin Lymphoma

5-Year SEER Conditional Relative Survival and 95% Confidence Intervals

Probability of surviving the next 5 years given the cohort
has already survived 0, 1, or 3 years
1998-2006 by stage at diagnosis



Source: SEER 17 areas (San Francisco, Connecticut, Detroit, Hawaii, Iowa, New Mexico, Seattle, Utah, Atlanta, San Jose-Monterey, Los Angeles, Alaska Native Registry, Rural Georgia, California excluding SF/SJM/LA, Kentucky, Louisiana, and New Jersey). California excluding SF/SJM/LA, Kentucky, Louisiana, and New Jersey contribute cases for diagnosis years 2000-2006. The remaining 13 SEER Areas contribute cases for the entire period 1998-2006. Percent surviving is not shown if based on less than 25 cases. Confidence intervals are not shown if length of the confidence interval is greater than 5 times the standard error.