

Table 1.4  
Age-Adjusted SEER Incidence and U.S. Death Rates and 5-Year Relative Survival (Percent)  
By Primary Cancer Site, Sex and Time Period

Site	All Races								
	Incidence <sup>a</sup> (2003-2007)			US Mortality <sup>b</sup> (2003-2007)			Survival <sup>c</sup> (%) (1999-2006)		
	Total	Males	Females	Total	Males	Females	Total	Males	Females
All Sites	461.6	538.9	408.0	183.8	225.4	155.4	66.0	66.0	66.0
Oral Cavity & Pharynx:	10.4	15.4	6.1	2.5	3.9	1.4	60.9	59.8	63.6
Lip	0.7	1.2	0.3	0.0	0.0	0.0	90.4	90.1	91.3
Tongue	2.9	4.3	1.7	0.6	0.9	0.4	59.4	59.3	59.6
Salivary gland	1.3	1.7	1.0	0.2	0.4	0.1	73.7	67.9	81.1
Floor of mouth	0.6	0.9	0.3	0.0	0.1	0.0	53.1	50.8	59.0
Gum & other oral cavity	1.5	1.8	1.2	0.4	0.5	0.3	59.6	55.9	64.0
Nasopharynx	0.7	1.0	0.4	0.2	0.3	0.1	57.6	57.0	58.7
Tonsil	1.6	2.6	0.6	0.2	0.3	0.1	66.8	67.6	63.2
Oropharynx	0.4	0.6	0.2	0.2	0.3	0.1	38.4	38.7	37.8
Hypopharynx	0.7	1.2	0.3	0.1	0.2	0.0	29.4	29.1	30.5
Other oral cavity & pharynx	0.2	0.3	0.1	0.5	0.9	0.2	34.5	37.1	28.8
Digestive System:	87.0	106.1	71.7	44.0	56.4	34.2	45.2	43.3	47.4
Esophagus	4.5	7.8	1.9	4.4	7.8	1.7	17.0	16.8	17.7
Stomach	7.8	10.9	5.5	3.8	5.3	2.7	26.0	24.1	28.8
Small intestine	1.9	2.3	1.6	0.4	0.4	0.3	62.6	62.7	62.5
Colon & Rectum:	47.9	55.8	41.7	17.6	21.2	14.9	65.0	65.1	64.9
Colon	34.5	38.9	31.2	-	-	-	64.3	64.7	64.0
Rectum	13.4	16.9	10.6	-	-	-	66.5	65.9	67.2
Anus, anal canal & anorectum	1.6	1.4	1.8	0.2	0.2	0.2	66.2	60.8	69.8
Liver & intrahep. bile duct:	6.9	10.7	3.7	5.2	7.7	3.2	13.8	13.6	14.2
Liver	6.3	10.0	3.2	4.0	6.3	2.2	14.6	14.2	15.5
Intrahepatic bile duct	0.6	0.7	0.5	1.2	1.4	1.0	5.8	5.5	6.1
Gallbladder	1.2	0.9	1.5	0.6	0.5	0.8	15.9	14.1	16.5
Other biliary	1.8	2.2	1.5	0.5	0.6	0.4	16.8	17.8	15.6
Pancreas	11.7	13.3	10.5	10.7	12.3	9.4	5.6	5.3	5.9
Retroperitoneum	0.4	0.4	0.4	0.1	0.1	0.1	51.0	48.2	53.7
Peritoneum, omentum & mesentery	0.7	0.1	1.2	0.3	0.1	0.4	29.6	46.2	28.4
Other digestive system	0.5	0.6	0.5	0.3	0.3	0.2	11.4	10.9	11.8
Respiratory System:	66.8	83.6	54.3	54.0	71.5	41.2	19.0	18.4	19.8
Nose, nasal cavity & middle ear	0.7	0.9	0.5	0.2	0.2	0.1	56.3	54.6	58.2
Larynx	3.4	6.1	1.3	1.2	2.2	0.5	61.3	62.2	57.9
Lung & bronchus	62.5	76.2	52.4	52.5	68.8	40.6	15.8	13.5	18.3
Pleura <sup>d</sup>	0.0	0.1	0.0	0.1	0.1	0.0	28.8	28.0	29.8
Trachea & other respiratory organs	0.2	0.3	0.1	0.1	0.1	0.1	47.9	49.7	43.7
Bones & joints	0.9	1.0	0.8	0.4	0.5	0.4	68.2	65.0	72.2
Soft tissue (including heart)	3.2	3.8	2.7	1.3	1.4	1.1	66.9	66.6	67.3
Skin (excl. basal & squamous):	21.9	28.1	17.6	3.5	5.4	2.1	91.1	88.9	93.7
Melanoma of the skin	20.1	25.6	16.2	2.7	4.0	1.7	91.4	89.3	93.9
Other non-epithelial skin	1.8	2.5	1.4	0.8	1.4	0.4	88.0	84.8	91.9
Breast	66.5	1.2	122.9	13.5	0.3	24.0	89.0	86.0	89.0
Breast ( <i>in situ</i> )	15.9	0.1	30.0	-	-	-	100.0	100.0	100.0

Note: Incidence and death rates are per 100,000 and are age-adjusted to the 2000 US Std Population (19 age groups - Census P25-1130).

<sup>a</sup> SEER 17 areas (San Francisco, Connecticut, Detroit, Hawaii, Iowa, New Mexico, Seattle, Utah, Atlanta, San Jose-Monterey, Los Angeles, Alaska Native Registry, Rural Georgia, California excluding SF/SJM/LA, Kentucky, Louisiana and New Jersey).

<sup>b</sup> US Mortality Files, National Center for Health Statistics, Centers for Disease Control and Prevention.

<sup>c</sup> SEER 17 areas. California excluding SF/SJM/LA, Kentucky, Louisiana, and New Jersey contribute cases for diagnosis years 2000-2006. The remaining 13 SEER Areas contribute cases for the entire period 1999-2006.

<sup>d</sup> Mesotheliomas of the Pleura are included in the separate group Mesothelioma for incidence but are included in the Pleura grouping for mortality.

- Statistic could not be calculated due to less than 16 cases in the time interval.

Table 1.4 - continued  
 Age-Adjusted SEER Incidence and U.S. Death Rates and 5-Year Relative Survival (Percent)  
 By Primary Cancer Site, Sex and Time Period

All Races

Site	Incidence <sup>a</sup> (2003-2007)			US Mortality <sup>b</sup> (2003-2007)			Survival <sup>c</sup> (%) (1999-2006)		
	Total	Males	Females	Total	Males	Females	Total	Males	Females
Female Genital System:	25.8	-	48.1	9.0	-	16.0	69.5	-	69.5
Cervix uteri	4.2	-	8.1	1.3	-	2.4	70.2	-	70.2
Corpus uteri	12.3	-	22.9	1.1	-	1.9	83.8	-	83.8
Uterus, NOS	0.3	-	0.6	1.3	-	2.2	28.5	-	28.5
Ovary <sup>d</sup>	7.0	-	12.9	4.8	-	8.6	45.6	-	45.6
Vagina	0.4	-	0.7	0.1	-	0.2	51.4	-	51.4
Vulva	1.2	-	2.2	0.3	-	0.5	75.6	-	75.6
Other female genital system	0.4	-	0.7	0.1	-	0.2	64.3	-	64.3
Male Genital System:	73.0	163.4	-	9.7	25.2	-	98.7	98.7	-
Prostate	69.9	156.9	-	9.5	24.7	-	99.1	99.1	-
Testis	2.7	5.4	-	0.1	0.2	-	95.3	95.3	-
Penis	0.4	0.8	-	0.1	0.2	-	67.3	67.3	-
Other male genital system	0.1	0.2	-	0.0	0.0	-	85.8	85.8	-
Urinary System:	36.0	57.7	19.6	8.6	13.7	5.1	74.5	75.8	71.6
Urinary bladder	21.1	37.2	9.2	4.3	7.5	2.2	79.3	80.7	75.1
Kidney & renal pelvis	14.1	19.2	9.9	4.1	5.9	2.7	68.8	68.5	69.4
Ureter	0.6	0.8	0.4	0.1	0.1	0.1	53.3	56.8	48.4
Other urinary system	0.3	0.5	0.2	0.1	0.2	0.1	57.1	60.2	52.5
Eye & Orbit	0.8	1.0	0.7	0.1	0.1	0.1	83.6	82.1	85.3
Brain & Nervous System: <sup>e</sup>	6.5	7.6	5.5	4.3	5.2	3.5	35.1	33.1	37.6
Brain	6.1	7.2	5.0	-	-	-	31.8	30.3	33.6
Cranial nerves & other nervous system	0.4	0.4	0.4	-	-	-	80.4	76.9	83.6
Endocrine System:	10.9	6.0	15.8	0.8	0.8	0.8	94.9	89.6	96.6
Thyroid	10.2	5.2	15.2	0.5	0.5	0.5	97.3	94.4	98.0
Other endocrine & thymus	0.7	0.8	0.6	0.3	0.3	0.3	62.8	63.3	62.0
Lymphoma:	22.4	26.8	18.9	7.3	9.3	5.9	70.1	68.2	72.3
Hodgkin lymphoma	2.8	3.2	2.5	0.4	0.5	0.3	84.7	83.0	86.6
Non-Hodgkin lymphoma	19.6	23.6	16.5	6.9	8.7	5.5	67.4	65.4	69.6
Myeloma	5.6	7.1	4.5	3.6	4.4	2.9	38.2	39.3	36.9
Leukemia:	12.3	15.8	9.6	7.2	9.7	5.4	54.1	54.3	53.8
Lymphocytic:	6.2	8.2	4.6	2.1	2.9	1.4	74.2	73.7	75.0
Acute lymphocytic	1.6	1.9	1.4	0.5	0.6	0.4	65.2	64.9	65.7
Chronic lymphocytic	4.2	5.7	3.0	1.5	2.1	1.0	78.4	76.9	80.7
Other lymphocytic	0.4	0.7	0.2	0.1	0.2	0.1	82.9	86.4	73.4
Myeloid & Monocytic:	5.5	6.8	4.5	3.4	4.4	2.6	33.5	32.8	34.4
Acute myeloid	3.5	4.3	2.9	2.8	3.6	2.2	23.6	22.2	25.3
Chronic myeloid	1.5	2.0	1.1	0.4	0.5	0.3	56.8	56.3	57.6
Acute monocytic	0.3	0.3	0.3	0.0	0.0	0.0	24.3	23.0	25.5
Other myeloid & monocytic	0.2	0.2	0.1	0.2	0.3	0.1	32.2	30.9	32.7
Other leukemia:	0.7	0.8	0.6	1.8	2.3	1.4	25.9	24.6	27.4
Other acute leukemia	0.3	0.3	0.2	0.7	1.0	0.6	16.0	15.7	16.3
Aleukemic, subleukemic & NOS	0.4	0.5	0.4	1.0	1.4	0.8	34.4	32.1	36.9
Kaposi Sarcoma <sup>f</sup>	0.6	1.2	0.1	-	-	-	62.0	61.6	67.6
Mesothelioma <sup>f</sup>	1.1	1.9	0.4	-	-	-	7.6	5.6	14.0
Ill-defined & unspecified	9.7	11.0	8.6	13.9	17.6	11.3	16.9	20.4	13.5

Note: Incidence and death rates are per 100,000 and are age-adjusted to the 2000 US Std Population (19 age groups - Census P25-1130).

<sup>a</sup> SEER 17 areas (San Francisco, Connecticut, Detroit, Hawaii, Iowa, New Mexico, Seattle, Utah, Atlanta, San Jose-Monterey, Los Angeles, Alaska Native Registry, Rural Georgia, California excluding SF/SJM/LA, Kentucky, Louisiana and New Jersey).

<sup>b</sup> US Mortality Files, National Center for Health Statistics, Centers for Disease Control and Prevention.

<sup>c</sup> SEER 17 areas. California excluding SF/SJM/LA, Kentucky, Louisiana, and New Jersey contribute cases for diagnosis years 2000-2006. The remaining 13 SEER Areas contribute cases for the entire period 1999-2006.

<sup>d</sup> Ovary excludes borderline cases or histologies 8442, 8451, 8462, 8472, and 8473.

<sup>e</sup> Due to coding changes, Brain & Nervous System mortality are no longer shown separately.

<sup>f</sup> Rate not shown for mortality. Category did not exist in mortality coding until 1999.

- Statistic could not be calculated due to less than 16 cases in the time interval.

Table 1.5  
Age-Adjusted SEER Incidence and U.S. Death Rates and 5-Year Relative Survival (Percent)  
By Primary Cancer Site, Sex and Time Period

Site	Whites								
	Incidence <sup>a</sup> (2003-2007)			US Mortality <sup>b</sup> (2003-2007)			Survival <sup>c</sup> (%) (1999-2006)		
	Total	Males	Females	Total	Males	Females	Total	Males	Females
All Sites	469.2	541.5	419.6	182.4	222.5	155.0	66.9	66.8	67.0
Oral Cavity & Pharynx:	10.5	15.7	6.1	2.4	3.7	1.4	62.8	62.2	64.1
Lip	0.8	1.4	0.4	0.0	0.0	0.0	90.4	90.0	91.7
Tongue	3.1	4.5	1.7	0.6	0.9	0.4	61.8	61.9	61.7
Salivary gland	1.3	1.7	1.0	0.2	0.4	0.1	72.6	67.2	80.2
Floor of mouth	0.6	0.9	0.4	0.0	0.1	0.0	54.4	52.6	58.7
Gum & other oral cavity	1.5	1.7	1.2	0.4	0.5	0.3	60.2	57.3	63.8
Nasopharynx	0.4	0.6	0.2	0.2	0.2	0.1	52.8	54.3	48.9
Tonsil	1.7	2.8	0.6	0.2	0.3	0.1	69.6	70.7	64.9
Oropharynx	0.3	0.6	0.2	0.2	0.3	0.1	42.2	43.0	40.2
Hypopharynx	0.6	1.1	0.3	0.1	0.2	0.0	30.9	30.9	30.7
Other oral cavity & pharynx	0.2	0.3	0.1	0.5	0.8	0.2	37.5	41.0	30.0
Digestive System:	84.5	103.0	69.4	42.4	54.4	32.8	46.3	44.5	48.3
Esophagus	4.6	8.0	1.9	4.4	7.9	1.6	17.8	17.7	18.2
Stomach	6.8	9.6	4.7	3.3	4.6	2.4	24.4	22.6	27.4
Small intestine	1.9	2.2	1.6	0.3	0.4	0.3	64.5	65.0	63.9
Colon & Rectum:	47.4	55.4	40.9	17.1	20.6	14.4	65.9	66.0	65.7
Colon	34.1	38.6	30.6	-	-	-	65.4	65.7	65.1
Rectum	13.3	16.8	10.4	-	-	-	67.1	66.7	67.5
Anus, anal canal & anorectum	1.7	1.4	1.9	0.2	0.2	0.2	67.3	61.9	70.7
Liver & Intrahep. bile duct:	5.9	9.1	3.1	4.8	7.0	3.0	13.3	13.2	13.5
Liver	5.3	8.4	2.6	3.6	5.6	1.9	14.2	13.9	15.1
Intrahepatic bile duct	0.6	0.6	0.5	1.2	1.4	1.0	5.5	5.5	5.7
Gallbladder	1.1	0.8	1.4	0.6	0.4	0.8	15.7	13.2	16.7
Other biliary	1.7	2.1	1.5	0.5	0.6	0.4	16.9	18.6	15.1
Pancreas	11.6	13.2	10.3	10.5	12.2	9.1	5.6	5.4	5.7
Retroperitoneum	0.4	0.4	0.4	0.1	0.1	0.1	51.9	48.8	55.0
Peritoneum, omentum & mesentery	0.7	0.1	1.3	0.3	0.1	0.4	29.7	44.1	28.8
Other digestive system	0.5	0.6	0.4	0.3	0.3	0.2	11.0	10.7	11.2
Respiratory System:	68.2	83.5	56.7	54.4	70.8	42.2	19.3	18.7	20.1
Nose, nasal cavity & middle ear	0.7	0.9	0.5	0.1	0.2	0.1	56.3	54.1	58.8
Larynx	3.4	6.1	1.3	1.1	2.0	0.4	62.8	63.6	59.5
Lung & bronchus	63.8	76.3	54.7	52.9	68.3	41.6	16.1	13.8	18.6
Pleura <sup>d</sup>	0.0	0.1	0.0	0.1	0.2	0.0	28.5	25.8	33.6
Trachea & other respiratory organs	0.2	0.3	0.1	0.1	0.1	0.1	48.4	51.8	40.3
Bones & joints	0.9	1.1	0.8	0.5	0.6	0.4	68.1	64.2	72.8
Soft tissue (including heart)	3.2	3.9	2.7	1.3	1.5	1.1	67.4	67.1	67.8
Skin (excl. basal & squamous):	25.4	32.3	20.5	3.9	6.0	2.4	90.8	88.6	93.5
Melanoma of the skin	23.5	29.7	19.1	3.1	4.5	2.0	91.1	89.0	93.7
Other non-epithelial skin	1.9	2.6	1.4	0.9	1.5	0.4	86.6	83.2	90.4
Breast	67.9	1.2	126.5	13.1	0.3	23.4	90.2	87.0	90.2
Breast ( <i>in situ</i> )	16.0	0.1	30.5	-	-	-	100.0	100.0	100.0

Note: Incidence and death rates are per 100,000 and are age-adjusted to the 2000 US Std Population (19 age groups - Census P25-1130).

<sup>a</sup> SEER 17 areas (San Francisco, Connecticut, Detroit, Hawaii, Iowa, New Mexico, Seattle, Utah, Atlanta, San Jose-Monterey, Los Angeles, Alaska Native Registry, Rural Georgia, California excluding SF/SJM/LA, Kentucky, Louisiana and New Jersey).

<sup>b</sup> US Mortality Files, National Center for Health Statistics, Centers for Disease Control and Prevention.

<sup>c</sup> SEER 17 areas. California excluding SF/SJM/LA, Kentucky, Louisiana, and New Jersey contribute cases for diagnosis years 2000-2006. The remaining 13 SEER Areas contribute cases for the entire period 1999-2006.

<sup>d</sup> Mesotheliomas of the Pleura are included in the separate group Mesothelioma for incidence but are included in the Pleura grouping for mortality.

- Statistic could not be calculated due to less than 16 cases in the time interval.

Table 1.5 - continued  
Age-Adjusted SEER Incidence and U.S. Death Rates and 5-Year Relative Survival (Percent)  
By Primary Cancer Site, Sex and Time Period

Site	Whites								
	Incidence <sup>a</sup> (2003-2007)			US Mortality <sup>b</sup> (2003-2007)			Survival <sup>c</sup> (%) (1999-2006)		
	Total	Males	Females	Total	Males	Females	Total	Males	Females
Female Genital System:	26.4	-	49.6	8.8	-	15.9	70.6	-	70.6
Cervix uteri	4.0	-	7.9	1.2	-	2.2	71.7	-	71.7
Corpus uteri	12.7	-	23.9	1.0	-	1.8	85.6	-	85.6
Uterus, NOS	0.3	-	0.5	1.2	-	2.0	28.5	-	28.5
Ovary <sup>d</sup>	7.3	-	13.5	5.0	-	8.9	45.4	-	45.4
Vagina	0.4	-	0.7	0.1	-	0.2	53.6	-	53.6
Vulva	1.3	-	2.3	0.3	-	0.5	75.8	-	75.8
Other female genital system	0.4	-	0.8	0.1	-	0.2	63.4	-	63.4
Male Genital System:	71.3	157.8	-	9.0	23.3	-	99.2	99.2	-
Prostate	67.6	150.4	-	8.8	22.8	-	99.6	99.6	-
Testis	3.3	6.4	-	0.1	0.3	-	95.7	95.7	-
Penis	0.4	0.8	-	0.1	0.2	-	66.5	66.5	-
Other male genital system	0.1	0.2	-	0.0	0.0	-	88.2	88.2	-
Urinary System:	38.3	61.5	20.6	8.9	14.2	5.1	75.1	76.3	72.5
Urinary bladder	22.8	40.4	9.8	4.5	7.9	2.2	79.9	81.0	76.6
Kidney & renal pelvis	14.5	19.7	10.2	4.2	6.0	2.7	69.0	68.7	69.6
Ureter	0.6	0.9	0.4	0.1	0.2	0.1	53.3	57.1	48.1
Other urinary system	0.3	0.5	0.1	0.1	0.2	0.1	58.8	59.8	57.1
Eye & Orbit	0.9	1.1	0.8	0.1	0.1	0.1	83.3	81.8	85.0
Brain & Nervous System: <sup>e</sup>	7.1	8.4	6.0	4.6	5.6	3.8	34.3	32.6	36.5
Brain	6.7	8.0	5.5	-	-	-	31.1	29.9	32.6
Cranial nerves & other nervous system	0.4	0.4	0.4	-	-	-	81.2	78.5	83.7
Endocrine System:	11.4	6.3	16.6	0.8	0.8	0.7	95.3	90.2	97.0
Thyroid	10.7	5.5	16.0	0.5	0.5	0.5	97.6	94.6	98.2
Other endocrine & thymus	0.7	0.8	0.6	0.3	0.3	0.3	62.5	64.0	60.5
Lymphoma:	23.5	28.0	19.9	7.6	9.6	6.1	70.9	69.2	72.8
Hodgkin lymphoma	3.0	3.4	2.7	0.4	0.5	0.4	85.0	83.6	86.7
Non-Hodgkin lymphoma	20.5	24.6	17.2	7.2	9.1	5.7	68.3	66.6	70.2
Myeloma	5.2	6.7	4.1	3.3	4.2	2.7	38.0	39.4	36.2
Leukemia:	12.9	16.6	10.0	7.4	10.0	5.6	54.4	54.6	54.2
Lymphocytic:	6.6	8.8	4.9	2.1	3.0	1.5	74.6	74.0	75.4
Acute lymphocytic	1.8	2.0	1.5	0.5	0.6	0.4	65.5	65.3	65.8
Chronic lymphocytic	4.4	6.1	3.2	1.5	2.2	1.0	78.6	77.0	81.1
Other lymphocytic	0.4	0.7	0.2	0.1	0.2	0.1	83.0	86.7	73.2
Myeloid & Monocytic:	5.6	7.0	4.6	3.5	4.6	2.7	32.6	31.7	33.7
Acute myeloid	3.6	4.4	3.0	2.9	3.7	2.2	23.1	21.6	24.9
Chronic myeloid	1.5	2.0	1.2	0.4	0.5	0.3	55.4	54.7	56.4
Acute monocytic	0.3	0.4	0.3	0.0	0.1	0.0	24.4	22.3	26.4
Other myeloid & monocytic	0.2	0.2	0.1	0.2	0.3	0.1	31.0	29.9	31.1
Other leukemia:	0.7	0.8	0.6	1.8	2.4	1.4	24.8	23.7	26.1
Other acute leukemia	0.3	0.4	0.2	0.8	1.0	0.6	14.3	13.9	14.5
Aleukemic, subleukemic & NOS	0.4	0.5	0.3	1.0	1.4	0.8	34.5	32.8	36.2
Kaposi Sarcoma <sup>f</sup>	0.6	1.0	0.1	-	-	-	66.0	65.2	78.5
Mesothelioma <sup>f</sup>	1.2	2.1	0.5	-	-	-	7.1	5.2	13.4
Ill-defined & unspecified	9.8	11.2	8.7	13.9	17.5	11.3	17.7	21.9	13.7

Note: Incidence and death rates are per 100,000 and are age-adjusted to the 2000 US Std Population (19 age groups - Census P25-1130).

<sup>a</sup> SEER 17 areas (San Francisco, Connecticut, Detroit, Hawaii, Iowa, New Mexico, Seattle, Utah, Atlanta, San Jose-Monterey, Los Angeles, Alaska Native Registry, Rural Georgia, California excluding SF/SJM/LA, Kentucky, Louisiana and New Jersey).

<sup>b</sup> US Mortality Files, National Center for Health Statistics, Centers for Disease Control and Prevention.

<sup>c</sup> SEER 17 areas. California excluding SF/SJM/LA, Kentucky, Louisiana, and New Jersey contribute cases for diagnosis years 2000-2006. The remaining 13 SEER Areas contribute cases for the entire period 1999-2006.

<sup>d</sup> Ovary excludes borderline cases or histologies 8442, 8451, 8462, 8472, and 8473.

<sup>e</sup> Due to coding changes, Brain & Nervous System mortality are no longer shown separately.

<sup>f</sup> Rate not shown for mortality. Category did not exist in mortality coding until 1999.

- Statistic could not be calculated due to less than 16 cases in the time interval.

Table 1.6  
Age-Adjusted SEER Incidence and U.S. Death Rates and 5-Year Relative Survival (Percent)  
By Primary Cancer Site, Sex and Time Period

Site	Blacks								
	Incidence <sup>a</sup> (2003-2007)			US Mortality <sup>b</sup> (2003-2007)			Survival <sup>c</sup> (%) (1999-2006)		
	Total	Males	Females	Total	Males	Females	Total	Males	Females
All Sites	489.8	624.0	399.1	224.2	296.5	180.6	57.9	60.6	54.9
Oral Cavity & Pharynx:	10.2	16.1	5.8	3.6	6.3	1.5	42.2	37.5	53.2
Lip	0.1	0.1	-	-	-	-	87.4	90.8	81.5
Tongue	2.2	3.6	1.2	0.7	1.2	0.3	32.9	31.1	36.9
Salivary gland	1.0	1.1	1.0	0.2	0.2	0.1	72.9	65.4	79.3
Floor of mouth	0.6	1.0	0.3	0.1	0.1	-	42.0	36.7	58.4
Gum & other oral cavity	1.7	2.1	1.3	0.4	0.7	0.2	53.3	44.8	65.5
Nasopharynx	0.7	1.2	0.4	0.3	0.5	0.1	51.5	49.4	56.1
Tonsil	1.6	2.9	0.6	0.3	0.6	0.1	42.7	42.0	45.4
Oropharynx	0.7	1.2	0.3	0.4	0.7	0.2	20.7	20.5	21.4
Hypopharynx	1.2	2.3	0.4	0.2	0.4	0.0	21.3	19.8	27.3
Other oral cavity & pharynx	0.3	0.5	0.2	1.0	1.9	0.4	20.2	19.9	20.3
Digestive System:	109.5	133.9	92.0	60.4	79.1	47.4	38.4	35.2	41.7
Esophagus	5.4	8.9	2.9	5.1	8.9	2.5	11.2	10.2	13.8
Stomach	11.9	16.7	8.6	7.3	10.7	5.0	25.5	22.8	29.0
Small intestine	3.1	3.4	2.8	0.6	0.7	0.5	54.6	51.2	57.4
Colon & Rectum:	58.9	68.1	52.6	24.7	30.5	21.0	56.2	55.6	56.6
Colon	44.9	50.8	41.0	-	-	-	55.5	55.5	55.5
Rectum	14.0	17.2	11.6	-	-	-	58.1	55.9	60.3
Anus, anal canal & anorectum	1.7	1.7	1.7	0.2	0.2	0.2	58.3	51.4	64.7
Liver & Intrahep. bile duct:	8.6	14.0	4.4	7.0	11.1	3.9	9.5	8.4	12.2
Liver	8.1	13.6	3.9	5.9	9.8	3.0	9.7	8.7	12.3
Intrahepatic bile duct	0.5	0.4	0.5	1.1	1.2	0.9	6.0	2.7	9.3
Gallbladder	1.5	1.1	1.7	0.8	0.6	0.9	13.9	22.5	11.6
Other biliary	1.6	1.9	1.4	0.4	0.4	0.4	12.8	13.8	12.3
Pancreas	15.5	16.7	14.4	13.8	15.4	12.4	5.2	4.2	6.0
Retroperitoneum	0.4	0.4	0.4	0.1	0.1	0.1	41.0	37.2	42.9
Peritoneum, omentum & mesentery	0.4	0.1	0.6	0.2	0.1	0.2	31.1	58.5	25.4
Other digestive system	0.6	0.7	0.6	0.4	0.5	0.3	14.1	12.8	14.9
Respiratory System:	79.9	112.6	57.4	61.1	92.5	40.5	16.2	16.2	16.2
Nose, nasal cavity & middle ear	0.6	0.9	0.4	0.2	0.3	0.1	51.0	49.6	53.0
Larynx	5.4	10.3	1.9	2.3	4.6	0.7	50.7	51.8	46.6
Lung & bronchus	73.5	101.2	54.8	58.6	87.5	39.6	12.6	11.3	14.4
Pleura <sup>d</sup>	-	-	-	0.0	0.1	0.0	-	-	-
Trachea & other respiratory organs	0.2	0.2	0.2	0.1	0.1	0.1	43.1	37.1	52.9
Bones & joints	0.7	0.8	0.7	0.5	0.5	0.4	66.6	67.1	65.5
Soft tissue (including heart)	3.3	3.6	3.1	1.4	1.4	1.4	61.8	61.6	61.9
Skin (excl. basal & squamous):	2.2	2.2	2.2	0.9	1.4	0.6	87.1	85.0	88.8
Melanoma of the skin	1.0	1.1	1.0	0.4	0.5	0.4	74.6	70.0	77.9
Other non-epithelial skin	1.1	1.1	1.2	0.5	0.8	0.2	95.4	94.5	96.2
Breast	67.8	1.6	118.3	19.2	0.5	32.4	77.5	76.8	77.5
Breast ( <i>in situ</i> )	15.7	0.2	27.7	-	-	-	100.0	97.8	100.0

Note: Incidence and death rates are per 100,000 and are age-adjusted to the 2000 US Std Population (19 age groups - Census P25-1130).

<sup>a</sup> SEER 17 areas (San Francisco, Connecticut, Detroit, Hawaii, Iowa, New Mexico, Seattle, Utah, Atlanta, San Jose-Monterey, Los Angeles, Alaska Native Registry, Rural Georgia, California excluding SF/SJM/LA, Kentucky, Louisiana and New Jersey).

<sup>b</sup> US Mortality Files, National Center for Health Statistics, Centers for Disease Control and Prevention.

<sup>c</sup> SEER 17 areas. California excluding SF/SJM/LA, Kentucky, Louisiana, and New Jersey contribute cases for diagnosis years 2000-2006. The remaining 13 SEER Areas contribute cases for the entire period 1999-2006.

<sup>d</sup> Mesotheliomas of the Pleura are included in the separate group Mesothelioma for incidence but are included in the Pleura grouping for mortality.

- Statistic could not be calculated due to less than 16 cases in the time interval.

Table 1.6 - continued  
Age-Adjusted SEER Incidence and U.S. Death Rates and 5-Year Relative Survival (Percent)  
By Primary Cancer Site, Sex and Time Period

Site	Blacks								
	Incidence <sup>a</sup> (2003-2007)			US Mortality <sup>b</sup> (2003-2007)			Survival <sup>c</sup> (%) (1999-2006)		
	Total	Males	Females	Total	Males	Females	Total	Males	Females
Female Genital System:	25.2	-	44.2	11.7	-	19.7	55.5	-	55.5
Cervix uteri	5.6	-	10.1	2.5	-	4.4	60.7	-	60.7
Corpus uteri	11.2	-	19.4	1.9	-	3.2	62.3	-	62.3
Uterus, NOS	0.7	-	1.1	2.4	-	4.1	25.7	-	25.7
Ovary <sup>d</sup>	5.9	-	10.2	4.3	-	7.2	36.8	-	36.8
Vagina	0.6	-	1.0	0.2	-	0.3	41.9	-	41.9
Vulva	1.0	-	1.8	0.2	-	0.3	69.4	-	69.4
Other female genital system	0.4	-	0.6	0.1	-	0.2	62.7	-	62.7
Male Genital System:	98.8	236.9	-	19.5	54.6	-	95.7	95.7	-
Prostate	97.8	234.6	-	19.3	54.2	-	95.8	95.8	-
Testis	0.6	1.2	-	0.1	0.2	-	88.4	88.4	-
Penis	0.4	0.9	-	0.1	0.3	-	69.7	69.7	-
Other male genital system	0.1	0.2	-	0.0	0.0	-	76.0	76.0	-
Urinary System:	29.0	43.4	18.9	7.9	11.6	5.6	65.4	67.5	62.0
Urinary bladder	12.8	20.7	7.6	3.7	5.4	2.7	65.5	71.2	55.5
Kidney & renal pelvis	15.4	21.8	10.7	4.0	6.0	2.7	66.3	65.5	67.4
Ureter	0.3	0.3	0.3	0.1	0.0	0.1	43.9	45.6	39.9
Other urinary system	0.4	0.5	0.3	0.1	0.1	0.2	35.5	41.0	31.5
Eye & Orbit	0.2	0.3	0.2	0.0	0.0	0.0	80.6	80.9	79.5
Brain & Nervous System: <sup>e</sup>	4.0	4.7	3.5	2.5	3.1	2.0	39.4	34.8	44.4
Brain	3.6	4.4	3.1	-	-	-	34.9	31.3	39.1
Cranial nerves & other nervous system	0.4	0.3	0.4	-	-	-	74.7	68.1	79.1
Endocrine System:	7.0	3.8	9.8	0.8	0.7	0.9	91.0	83.0	93.2
Thyroid	6.2	3.0	8.9	0.5	0.3	0.5	94.7	90.9	95.4
Other endocrine & thymus	0.9	0.9	0.8	0.3	0.4	0.3	62.0	61.1	62.6
Lymphoma:	17.4	20.9	14.6	5.2	6.5	4.2	63.0	58.3	68.6
Hodgkin lymphoma	2.6	3.0	2.3	0.4	0.5	0.3	81.5	77.0	86.4
Non-Hodgkin lymphoma	14.7	17.8	12.3	4.8	6.0	3.9	58.5	53.9	64.0
Myeloma	11.7	14.3	10.0	6.7	8.1	5.8	37.9	37.7	38.0
Leukemia:	9.8	12.7	7.8	6.3	8.4	5.0	46.5	46.8	46.2
Lymphocytic:	4.1	5.8	2.9	1.8	2.7	1.2	63.3	60.9	66.2
Acute lymphocytic	0.9	1.1	0.8	0.3	0.4	0.3	60.0	56.9	63.4
Chronic lymphocytic	3.0	4.4	2.0	1.4	2.1	0.9	65.0	62.4	68.3
Other lymphocytic	0.2	0.4	0.1	0.1	0.2	0.1	65.6	69.5	56.0
Myeloid & Monocytic:	4.9	5.8	4.2	2.8	3.4	2.4	34.9	36.4	33.3
Acute myeloid	3.1	3.5	2.7	2.2	2.7	1.9	24.3	25.3	22.7
Chronic myeloid	1.5	1.9	1.2	0.4	0.6	0.3	56.5	56.5	56.3
Acute monocytic	0.2	0.2	0.2	0.0	-	-	18.3	18.3	17.2
Other myeloid & monocytic	0.2	0.2	0.2	0.2	0.2	0.1	36.1	30.0	40.4
Other leukemia:	0.8	1.0	0.7	1.7	2.2	1.4	26.0	22.5	29.0
Other acute leukemia	0.3	0.3	0.2	0.6	0.8	0.5	23.4	22.7	22.1
Aleukemic, subleukemic & NOS	0.6	0.7	0.5	1.1	1.5	0.9	26.2	22.3	30.3
Kaposi Sarcoma <sup>f</sup>	1.2	2.4	0.2	-	-	-	45.4	46.0	32.0
Mesothelioma <sup>f</sup>	0.6	1.2	0.3	-	-	-	11.5	8.8	15.8
Ill-defined & unspecified	11.1	12.7	9.9	16.6	21.8	13.1	11.2	11.8	10.7

Note: Incidence and death rates are per 100,000 and are age-adjusted to the 2000 US Std Population (19 age groups - Census P25-1130).

<sup>a</sup> SEER 17 areas (San Francisco, Connecticut, Detroit, Hawaii, Iowa, New Mexico, Seattle, Utah, Atlanta, San Jose-Monterey, Los Angeles, Alaska Native Registry, Rural Georgia, California excluding SF/SJM/LA, Kentucky, Louisiana and New Jersey).

<sup>b</sup> US Mortality Files, National Center for Health Statistics, Centers for Disease Control and Prevention.

<sup>c</sup> SEER 17 areas. California excluding SF/SJM/LA, Kentucky, Louisiana, and New Jersey contribute cases for diagnosis years 2000-2006. The remaining 13 SEER Areas contribute cases for the entire period 1999-2006.

<sup>d</sup> Ovary excludes borderline cases or histologies 8442, 8451, 8462, 8472, and 8473.

<sup>e</sup> Due to coding changes, Brain & Nervous System mortality are no longer shown separately.

<sup>f</sup> Rate not shown for mortality. Category did not exist in mortality coding until 1999.

- Statistic could not be calculated due to less than 16 cases in the time interval.

# SEER Incidence<sup>a</sup> and US Death Rates,<sup>b</sup> 2003 - 2007 5-Year Relative Survival,<sup>c</sup> 1999-2006 All Cancer Combined, by Race and Sex

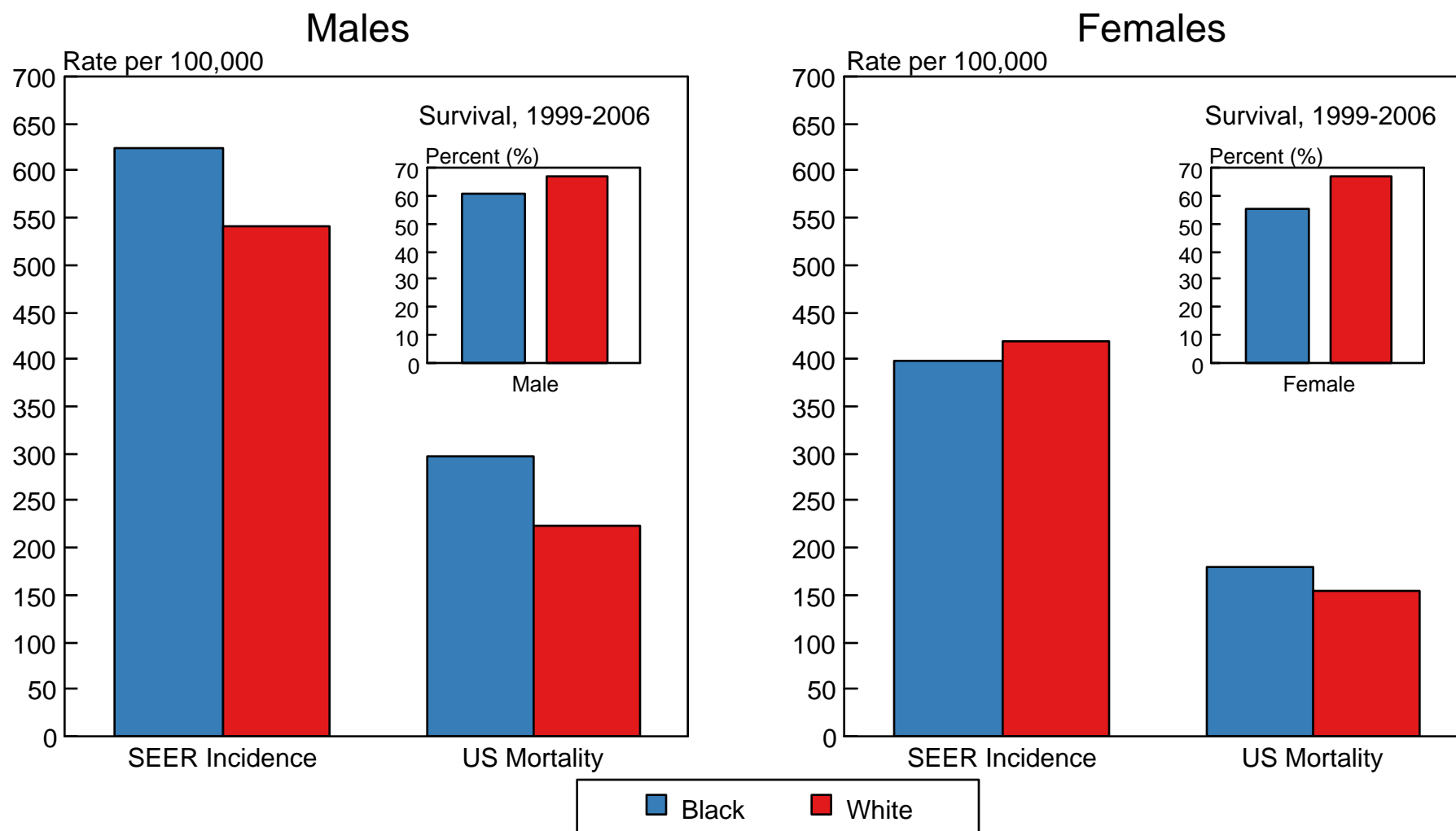
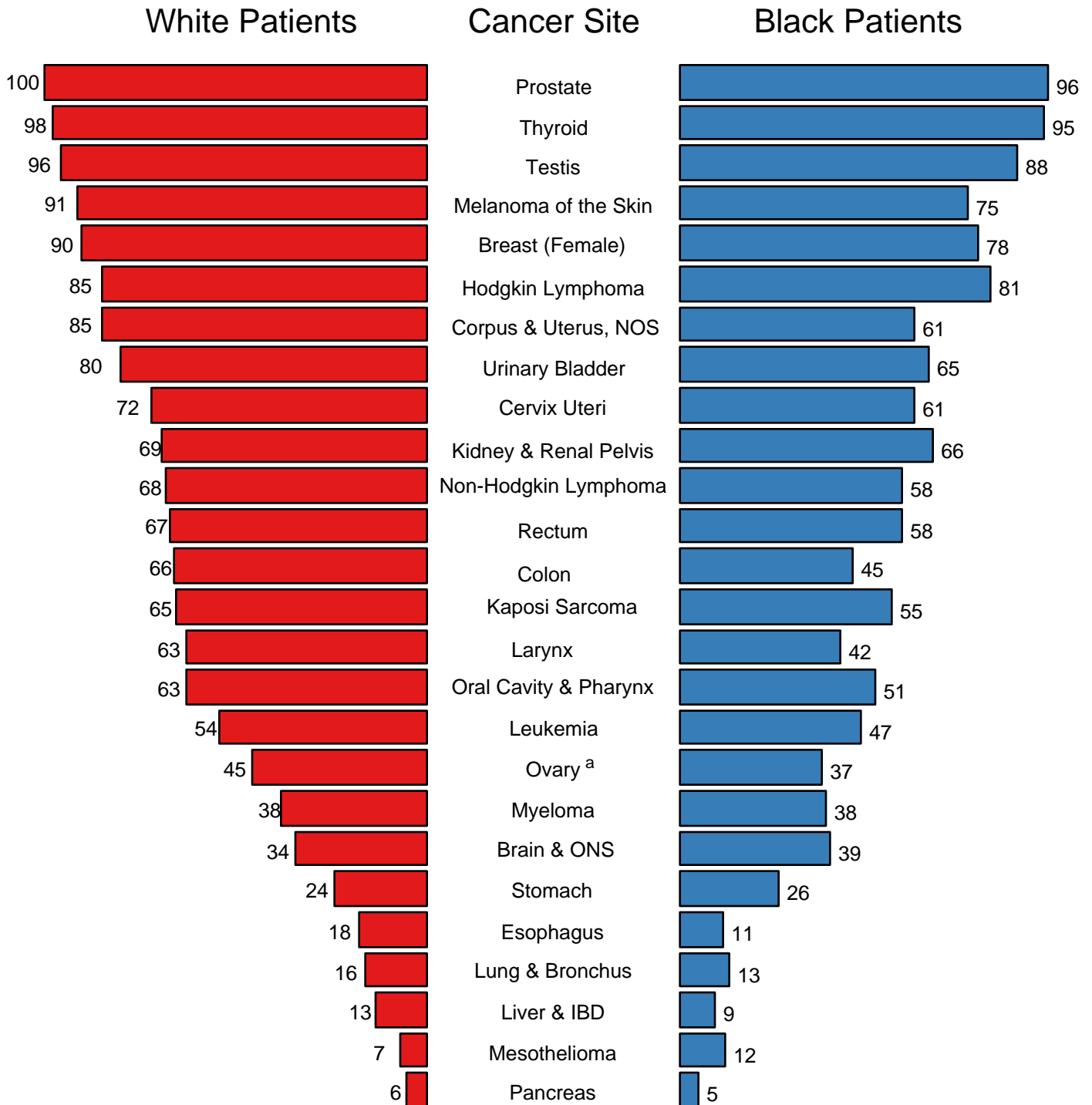


Figure 19

- <sup>a</sup> Incidence rates are from the SEER 17 areas (San Francisco, Connecticut, Detroit, Hawaii, Iowa, New Mexico, Seattle, Utah, Atlanta, San Jose-Monterey, Los Angeles, Alaska Native Registry, Rural Georgia, California excluding SF/SJM/LA, Kentucky, Louisiana, and New Jersey) and are age-adjusted to the 2000 US Std Population (19 age groups - Census P25-1103).
- <sup>b</sup> Death rates are from the US Mortality Files, National Center for Health Statistics, Centers for Disease Control and Prevention and are age-adjusted to the 2000 US Std Population (19 age groups - Census P25-1103).
- <sup>c</sup> Survival rates are from the SEER 17 areas (San Francisco, Connecticut, Detroit, Hawaii, Iowa, New Mexico, Seattle, Utah, Atlanta, San Jose-Monterey, Los Angeles, Alaska Native Registry, Rural Georgia, California excluding SF/SJM/LA, Kentucky, Louisiana, and New Jersey). California excluding SF/SJM/LA, Kentucky, Louisiana, and New Jersey contribute cases for diagnosis years 2000-2006. The remaining 13 SEER Areas contribute cases for the entire period 1999-2006.

Figure 1.11

## 5-Year Relative Survival (%) SEER Program, 1999-2006 Both Sexes, by Race and Cancer Site



Source: SEER 17 areas (San Francisco, Connecticut, Detroit, Hawaii, Iowa, New Mexico, Seattle, Utah, Atlanta, San Jose-Monterey, Los Angeles, Alaska Native Registry, Rural Georgia, California excluding SF/SJM/LA, Kentucky, Louisiana, and New Jersey). California excluding SF/SJM/LA, Kentucky, Louisiana, and New Jersey contribute cases for diagnosis years 2000-2006. The remaining 13 SEER Areas contribute cases for the entire period 1999-2006

<sup>a</sup> Ovary excludes borderline cases or histologies 8442, 8451, 8462, 8472, and 8473.



Table 2.8  
All Cancer Sites (Invasive)

5-Year Relative and Period Survival (Percent) by Race, Sex, Diagnosis Year and Age

	All Races			Whites			Blacks		
	Total	Males	Females	Total	Males	Females	Total	Males	Females
5-Year Relative Survival (Percent)									
Year of Diagnosis:									
1960-1963 <sup>a</sup>	-	-	-	39	-	-	27	-	-
1970-1973 <sup>a</sup>	-	-	-	43	-	-	31	-	-
1975-1977 <sup>b</sup>	50.3	42.4	57.3	51.2	43.5	58.0	39.9	32.8	47.3
1978-1980 <sup>b</sup>	50.3	43.8	56.4	51.3	45.1	57.0	39.6	33.3	46.6
1981-1983 <sup>b</sup>	51.5	46.0	56.7	52.6	47.4	57.5	39.6	34.3	45.6
1984-1986 <sup>b</sup>	53.6	47.8	59.0	54.8	49.3	60.0	40.8	35.5	46.5
1987-1989 <sup>b</sup>	56.4	51.6	61.1	57.8	53.3	62.1	43.6	38.8	48.9
1990-1992 <sup>b</sup>	60.7	59.3	62.3	62.3	61.1	63.5	48.1	47.1	49.2
1993-1995 <sup>b</sup>	62.4	61.4	63.4	63.6	62.7	64.5	53.1	54.1	51.9
1996-1998 <sup>b</sup>	64.6	63.9	65.3	65.8	65.1	66.4	55.7	57.7	53.4
1999-2006 <sup>b</sup>	67.8 <sup>e</sup>	67.9 <sup>e</sup>	67.7 <sup>e</sup>	69.1 <sup>e</sup>	69.2 <sup>e</sup>	69.0 <sup>e</sup>	59.2 <sup>e</sup>	62.1 <sup>e</sup>	55.9 <sup>e</sup>
5-Year Period Survival (Percent) <sup>cd</sup>									
Year of Diagnosis:									
1999-2006	66.7	66.8	66.5	67.5	67.5	67.5	58.6	61.5	55.3
5-Year Relative Survival (Percent), 1999-2006 <sup>c</sup>									
Age at Diagnosis:									
Ages <45	79.0	73.8	82.3	80.7	76.2	83.8	65.7	57.5	70.8
Ages 45-54	71.5	65.2	76.5	73.2	66.8	78.2	59.2	56.6	61.8
Ages 55-64	68.4	68.2	68.6	69.4	69.0	69.9	60.6	64.3	54.9
Ages 65-74	63.8	67.2	59.1	64.4	67.5	60.2	57.7	64.9	47.4
Ages 75+	53.5	58.2	49.2	54.3	58.6	50.5	43.6	51.6	36.9
Ages <65	71.8	68.4	75.0	73.2	69.7	76.4	61.3	60.7	61.9
Ages 65+	59.3	63.7	54.2	59.9	64.0	55.4	52.4	60.6	42.7

<sup>a</sup> Based on End Results data from a series of hospital registries and one population-based registry.  
<sup>b</sup> Based on the SEER 9 areas (San Francisco, Connecticut, Detroit, Hawaii, Iowa, New Mexico, Seattle, Utah, Atlanta).  
Based on follow-up of patients into 2007.  
<sup>c</sup> Based on the SEER 17 areas (San Francisco, Connecticut, Detroit, Hawaii, Iowa, New Mexico, Seattle, Utah, Atlanta, San Jose-Monterey, Los Angeles, Alaska Native Registry, Rural Georgia, California excluding SF/SJM/LA, Kentucky, Louisiana and New Jersey). California excluding SF/SJM/LA, Kentucky, Louisiana, and New Jersey contribute cases for diagnosis years 2000-2006. The remaining 13 SEER Areas contribute cases for the entire period 1999-2006. Based on follow-up of patients into 2007.  
<sup>d</sup> Period survival provides a more up-to-date estimate of survival by piecing together the most recent conditional survival estimates from several cohorts. It is computed here using three year calendar blocks (2004-2006: 0-1 year survival), (2003-2005: 1-2 year survival), (2002-2004: 2-3 year survival), (2001-2003: 3-4 year survival), (2000-2002: 4-5 years survival).  
<sup>e</sup> The difference between 1975-1977 and 1999-2006 is statistically significant (p<.05).  
<sup>f</sup> The standard error is between 5 and 10 percentage points.  
<sup>g</sup> The standard error is greater than 10 percentage points.  
- Statistic could not be calculated due to fewer than 25 cases during the time period.

Table 3.8  
Cancer of the Brain and Other Nervous System (Invasive)

5-Year Relative and Period Survival (Percent) by Race, Sex, Diagnosis Year, Stage and Age

	All Races			Whites			Blacks		
	Total	Males	Females	Total	Males	Females	Total	Males	Females
5-Year Relative Survival (Percent)									
Year of Diagnosis:									
1960-1963 <sup>a</sup>	-	-	-	18	16	21	19	17	21
1970-1973 <sup>a</sup>	-	-	-	20	18	22	19	19	19
1975-1977 <sup>b</sup>	23.7	22.2	25.8	23.1	21.6	25.0	26.6	20.7	35.9 <sup>f</sup>
1978-1980 <sup>b</sup>	25.1	23.9	26.5	24.6	23.5	25.8	29.1	29.4	28.4 <sup>f</sup>
1981-1983 <sup>b</sup>	25.5	24.5	26.7	24.7	24.0	25.7	32.5	33.4	30.6 <sup>f</sup>
1984-1986 <sup>b</sup>	28.7	27.6	30.1	28.0	26.8	29.5	32.2	34.3	29.4
1987-1989 <sup>b</sup>	30.8	29.2	32.7	30.1	28.3	32.5	33.2	34.8	31.0
1990-1992 <sup>b</sup>	32.2	32.7	31.5	31.3	31.7	30.7	41.1	43.0	38.7
1993-1995 <sup>b</sup>	34.2	34.9	33.3	33.0	33.3	32.5	42.8	47.6	37.4
1996-1998 <sup>b</sup>	33.1	32.5	33.7	32.4	32.1	32.8	36.6	35.0	38.1
1999-2006 <sup>b</sup>	36.3 <sup>e</sup>	34.4 <sup>e</sup>	38.8 <sup>e</sup>	35.4 <sup>e</sup>	33.9 <sup>e</sup>	37.3 <sup>e</sup>	41.4 <sup>e</sup>	35.8 <sup>e</sup>	47.5
5-Year Period Survival (Percent) <sup>cd</sup>									
Year of Diagnosis:									
1999-2006	35.8	33.7	38.3	34.9	33.1	36.9	42.0	37.1	46.9
Stage Distribution (%) 1999-2006 <sup>c</sup>									
All Stages									
Number of cases	31,350	17,423	13,927	27,528	15,387	12,141	1,966	1,031	935
Percent	100%	100%	100%	100%	100%	100%	100%	100%	100%
Localized	74	75	72	74	75	72	73	72	75
Regional	16	16	16	16	16	16	14	16	13
Distant	2	2	2	2	2	2	3	3	2
Unstaged	8	7	9	8	7	9	10	10	10
5-Year Relative Survival (Percent), 1999-2006 <sup>c</sup>									
Age at Diagnosis:									
Ages <45	64.6	61.7	68.3	65.5	62.8	68.9	58.6	52.7	65.3
Ages 45-54	30.1	26.7	35.1	29.5	26.1	34.4	32.6	26.9	39.3
Ages 55-64	15.2	12.8	18.7	14.6	12.6	17.6	18.7	14.0	24.1
Ages 65-74	8.0	6.1	10.3	7.7	5.8	9.9	10.1	8.0	12.2
Ages 75+	4.1	3.3	4.7	3.9	3.4	4.4	7.9	4.4	9.9
Ages <65	45.1	41.6	49.9	44.7	41.3	49.2	45.9	40.0	52.8
Ages 65+	6.3	5.0	7.6	6.0	4.8	7.2	9.2	6.9	11.1
Stage:									
All Stages	35.1	33.1	37.6	34.3	32.6	36.5	39.4	34.8	44.4
Localized	37.6	35.3	40.5	36.8	34.7	39.5	41.9	38.2	45.7
Regional	23.5	22.2	25.1	22.5	21.8	23.4	27.7	21.6	35.5
Distant	38.6	36.5	41.0	39.7	37.6	41.8	33.4 <sup>f</sup>	31.0 <sup>f</sup>	-
Unstaged	34.3	33.2	35.4	33.0	32.4	33.5	36.8	29.3 <sup>f</sup>	45.0 <sup>f</sup>

<sup>a</sup> Based on End Results data from a series of hospital registries and one population-based registry.

<sup>b</sup> Based on the SEER 9 areas (San Francisco, Connecticut, Detroit, Hawaii, Iowa, New Mexico, Seattle, Utah, Atlanta).

Based on follow-up of patients into 2007.

<sup>c</sup> Based on the SEER 17 areas (San Francisco, Connecticut, Detroit, Hawaii, Iowa, New Mexico, Seattle, Utah, Atlanta, San Jose-Monterey, Los Angeles, Alaska Native Registry, Rural Georgia, California excluding SF/SJM/LA, Kentucky, Louisiana and New Jersey). California excluding SF/SJM/LA, Kentucky, Louisiana, and New Jersey contribute cases for diagnosis years 2000-2006. The remaining 13 SEER Areas contribute cases for the entire period 1999-2006. Based on follow-up of patients into 2007.

<sup>d</sup> Period survival provides a more up-to-date estimate of survival by piecing together the most recent conditional survival estimates from several cohorts. It is computed here using three year calendar blocks (2004-2006: 0-1 year survival),

(2003-2005: 1-2 year survival), (2002-2004: 2-3 year survival), (2001-2003: 3-4 year survival), (2000-2002: 4-5 years survival).

<sup>e</sup> The difference between 1975-1977 and 1999-2006 is statistically significant ( $p < .05$ ).

<sup>f</sup> The standard error is between 5 and 10 percentage points.

<sup>g</sup> The standard error is greater than 10 percentage points.

- Statistic could not be calculated due to fewer than 25 cases during the time period.

Table 4.14  
Cancer of the Female Breast (Invasive)

5-Year Relative and Period Survival (Percent) by Race, Diagnosis Year, Stage and Age

	All Races, Females			White Females			Black Females		
	All	<50	50+	All	<50	50+	All	<50	50+
5-Year Relative Survival (Percent)									
Year of Diagnosis:									
1960-1963 <sup>a</sup>	-	-	-	63	-	-	46	-	-
1970-1973 <sup>a</sup>	-	-	-	68	-	-	51	-	-
1975-1977 <sup>b</sup>	75.3	76.7	74.8	76.1	77.9	75.4	62.4	62.4	62.3
1978-1980 <sup>b</sup>	74.8	75.6	74.6	75.5	76.2	75.3	63.9	67.2	62.0
1981-1983 <sup>b</sup>	76.6	77.5	76.4	77.6	78.7	77.3	64.1	65.4	63.4
1984-1986 <sup>b</sup>	79.4	77.9	79.9	80.5	79.7	80.8	65.3	63.9	66.1
1987-1989 <sup>b</sup>	84.3	81.5	85.3	85.4	82.9	86.2	71.3	69.6	72.3
1990-1992 <sup>b</sup>	85.4	83.4	86.2	86.7	85.2	87.3	71.7	70.2	72.6
1993-1995 <sup>b</sup>	86.7	84.3	87.5	88.0	86.3	88.6	72.8	70.2	74.4
1996-1998 <sup>b</sup>	88.5	86.6	89.3	89.7	88.3	90.2	76.4	74.0	77.9
1999-2006 <sup>b</sup>	89.9 <sup>e</sup>	88.7 <sup>e</sup>	90.4 <sup>e</sup>	91.2 <sup>e</sup>	90.4 <sup>e</sup>	91.6 <sup>e</sup>	78.4 <sup>e</sup>	77.2 <sup>e</sup>	79.0 <sup>e</sup>
5-Year Period Survival (Percent) <sup>cd</sup>									
Year of Diagnosis:									
1999-2006	89.2	88.2	89.5	90.5	89.9	90.7	77.2	76.2	77.8
Stage Distribution (%) 1999-2006 <sup>c</sup>									
All Stages									
Number of cases	314,500	79,068	235,432	261,313	61,267	200,046	28,425	9,372	19,053
Percent	100%	100%	100%	100%	100%	100%	100%	100%	100%
Localized	60	53	63	61	54	64	51	46	53
Regional	33	41	30	32	41	29	39	45	35
Distant	5	4	5	5	4	5	8	7	9
Unstaged	2	2	2	2	2	2	3	2	3
5-Year Relative Survival (Percent), 1999-2006 <sup>c</sup>									
Age at Diagnosis:									
Ages <45	86.3	-	-	87.7	-	-	75.4	-	-
Ages 45-54	89.5	-	-	90.9	-	-	78.4	-	-
Ages 55-64	90.0	-	-	91.0	-	-	78.8	-	-
Ages 65-74	90.3	-	-	91.2	-	-	80.7	-	-
Ages 75+	88.2	-	-	89.5	-	-	72.5	-	-
Ages <65	89.0	-	-	90.3	-	-	77.7	-	-
Ages 65+	89.4	-	-	90.4	-	-	77.4	-	-
Stage:									
All Stages	89.0	87.9	89.4	90.2	89.4	90.5	77.5	76.7	78.0
Localized	98.0	96.1	98.7	98.6	96.6	99.3	93.0	91.6	93.7
Regional	83.6	83.4	83.7	84.9	85.2	84.9	72.2	72.3	72.0
Distant	23.4	29.3	21.6	24.8	33.5	22.6	15.2	14.5	15.4
Unstaged	57.9	73.8	52.9	58.5	77.6	53.1	47.6	52.3	45.2
<i>In Situ</i> <sup>h</sup>	100.0	100.0	100.0	100.0	100.0	100.0	100.0	99.5	100.0

<sup>a</sup> Based on End Results data from a series of hospital registries and one population-based registry.

<sup>b</sup> Based on the SEER 9 areas (San Francisco, Connecticut, Detroit, Hawaii, Iowa, New Mexico, Seattle, Utah, Atlanta).

Based on follow-up of patients into 2007.

<sup>c</sup> Based on the SEER 17 areas (San Francisco, Connecticut, Detroit, Hawaii, Iowa, New Mexico, Seattle, Utah, Atlanta, San Jose-Monterey, Los Angeles, Alaska Native Registry, Rural Georgia, California excluding SF/SJM/LA, Kentucky, Louisiana and New Jersey). California excluding SF/SJM/LA, Kentucky, Louisiana, and New Jersey contribute cases for diagnosis years 2000-2006. The remaining 13 SEER Areas contribute cases for the entire period 1999-2006. Based on follow-up of patients into 2007.

<sup>d</sup> Period survival provides a more up-to-date estimate of survival by piecing together the most recent conditional survival estimates from several cohorts. It is computed here using three year calendar blocks (2004-2006: 0-1 year survival), (2003-2005: 1-2 year survival), (2002-2004: 2-3 year survival), (2001-2003: 3-4 year survival), (2000-2002: 4-5 years survival).

<sup>e</sup> The difference between 1975-1977 and 1999-2006 is statistically significant ( $p < .05$ ).

<sup>f</sup> The standard error is between 5 and 10 percentage points.

<sup>g</sup> The standard error is greater than 10 percentage points.

<sup>h</sup> *In situ* cases are not included in the All Stages group.

- Statistic could not be calculated due to fewer than 25 cases during the time period.

Table 5.8  
Cancer of the Cervix Uteri (Invasive)

5-Year Relative and Period Survival (Percent) by Race, Diagnosis Year, Stage and Age

	All Races, Females			White Females			Black Females		
	All	<50	50+	All	<50	50+	All	<50	50+
5-Year Relative Survival (Percent)									
Year of Diagnosis:									
1960-1963 <sup>a</sup>	-	-	-	58	-	-	47	-	-
1970-1973 <sup>a</sup>	-	-	-	64	-	-	61	-	-
1975-1977 <sup>b</sup>	70.1	82.5	58.7	70.8	83.9	59.1	65.2	75.5	55.3
1978-1980 <sup>b</sup>	68.5	78.5	58.9	69.3	79.8	59.4	61.6	70.5	52.7
1981-1983 <sup>b</sup>	68.3	79.6	56.5	68.9	80.7	56.3	61.6	73.7	49.4
1984-1986 <sup>b</sup>	68.2	78.0	56.3	70.0	79.7	57.5	58.5	68.1	48.4
1987-1989 <sup>b</sup>	71.1	79.6	59.4	73.6	82.6	59.9	58.1	63.4	53.1
1990-1992 <sup>b</sup>	70.6	79.0	58.3	72.0	81.2	57.9	58.8	63.4	52.3
1993-1995 <sup>b</sup>	73.3	81.8	60.6	74.8	83.4	60.7	64.1	71.0	54.3
1996-1998 <sup>b</sup>	73.5	81.1	61.5	74.7	82.8	60.5	65.2	67.7	61.5
1999-2006 <sup>b</sup>	71.1	80.9	56.6	72.5	83.1	55.9	63.5	70.6	54.3
5-Year Period Survival (Percent) <sup>cd</sup>									
Year of Diagnosis:									
1999-2006	69.1	77.4	57.5	70.6	79.0	58.2	59.0	67.3	48.5
Stage Distribution (%) 1999-2006 <sup>e</sup>									
All Stages									
Number of cases	22,952	12,930	10,022	17,585	10,159	7,426	2,967	1,563	1,404
Percent	100%	100%	100%	100%	100%	100%	100%	100%	100%
Localized	49	60	35	50	62	35	43	52	33
Regional	35	28	43	34	27	43	38	34	43
Distant	11	8	16	11	8	16	12	8	17
Unstaged	5	4	6	4	3	6	6	6	7
5-Year Relative Survival (Percent), 1999-2006 <sup>c</sup>									
Age at Diagnosis:									
Ages <45	80.8	-	-	82.4	-	-	70.5	-	-
Ages 45-54	69.2	-	-	70.2	-	-	60.0	-	-
Ages 55-64	61.0	-	-	60.8	-	-	54.1	-	-
Ages 65-74	56.2	-	-	56.5	-	-	46.8	-	-
Ages 75+	39.3	-	-	38.7	-	-	39.0	-	-
Ages <65	74.0	-	-	75.4	-	-	64.3	-	-
Ages 65+	49.6	-	-	49.7	-	-	43.7	-	-
Stage:									
All Stages	70.2	78.8	58.0	71.7	80.4	58.4	60.7	68.8	50.2
Localized	91.2	93.5	85.9	92.4	94.4	87.1	83.5	87.1	76.3
Regional	57.8	63.4	52.4	58.8	65.0	52.7	50.3	53.8	46.6
Distant	17.0	21.5	13.8	17.9	23.7	13.7	11.6	9.6	12.6
Unstaged	58.1	76.6	39.4	57.1	75.1	39.6	56.8	76.6 <sup>f</sup>	36.0 <sup>f</sup>

<sup>a</sup> Based on End Results data from a series of hospital registries and one population-based registry.

<sup>b</sup> Based on the SEER 9 areas (San Francisco, Connecticut, Detroit, Hawaii, Iowa, New Mexico, Seattle, Utah, Atlanta).

Based on follow-up of patients into 2007.

<sup>c</sup> Based on the SEER 17 areas (San Francisco, Connecticut, Detroit, Hawaii, Iowa, New Mexico, Seattle, Utah, Atlanta, San Jose-Monterey, Los Angeles, Alaska Native Registry, Rural Georgia, California excluding SF/SJM/LA, Kentucky, Louisiana and New Jersey). California excluding SF/SJM/LA, Kentucky, Louisiana, and New Jersey contribute cases for diagnosis years 2000-2006.

The remaining 13 SEER Areas contribute cases for the entire period 1999-2006. Based on follow-up of patients into 2007.

<sup>d</sup> Period survival provides a more up-to-date estimate of survival by piecing together the most recent conditional survival estimates from several cohorts. It is computed here using three year calendar blocks (2004-2006: 0-1 year survival),

(2003-2005: 1-2 year survival), (2002-2004: 2-3 year survival), (2001-2003: 3-4 year survival), (2000-2002: 4-5 years survival).

<sup>e</sup> The difference between 1975-1977 and 1999-2006 is statistically significant ( $p < .05$ ).

<sup>f</sup> The standard error is between 5 and 10 percentage points.

<sup>g</sup> The standard error is greater than 10 percentage points.

- Statistic could not be calculated due to fewer than 25 cases during the time period.

Table 6.12  
Cancer of the Colon and Rectum (Invasive)

5-Year Relative and Period Survival (Percent) by Race, Sex, Diagnosis Year, Stage and Age

	All Races			Whites			Blacks		
	Total	Males	Females	Total	Males	Females	Total	Males	Females
5-Year Relative Survival (Percent)									
Year of Diagnosis:									
1960-1963 <sup>a</sup>	-	-	-	-	-	-	-	-	-
1970-1973 <sup>a</sup>	-	-	-	-	-	-	-	-	-
1975-1977 <sup>b</sup>	51.0	50.0	51.9	51.2	50.3	52.0	46.3	44.6	47.3
1978-1980 <sup>b</sup>	52.4	51.4	53.3	52.7	51.7	53.7	46.2	44.3	47.5
1981-1983 <sup>b</sup>	55.3	54.9	55.6	55.6	55.5	55.7	47.5	44.0	50.3
1984-1986 <sup>b</sup>	58.7	58.6	58.7	59.4	59.4	59.4	49.2	48.2	50.0
1987-1989 <sup>b</sup>	60.6	60.8	60.4	61.1	61.5	60.7	53.3	51.0	55.2
1990-1992 <sup>b</sup>	62.2	62.1	62.4	63.0	62.8	63.2	53.6	55.3	52.1
1993-1995 <sup>b</sup>	61.1	60.7	61.5	61.7	61.2	62.1	52.9	52.0	53.6
1996-1998 <sup>b</sup>	63.7	63.5	63.9	64.3	64.1	64.6	55.1	55.7	54.7
1999-2006 <sup>b</sup>	66.6 <sup>e</sup>	66.9 <sup>e</sup>	66.3 <sup>e</sup>	67.9 <sup>e</sup>	68.4 <sup>e</sup>	67.3 <sup>e</sup>	56.7 <sup>e</sup>	55.7 <sup>e</sup>	57.5 <sup>e</sup>
5-Year Period Survival (Percent) <sup>cd</sup>									
Year of Diagnosis:									
1999-2006	65.9	65.9	65.9	66.7	66.9	66.5	57.4	56.2	58.4
Stage Distribution (%) 1999-2006 <sup>c</sup>									
All Stages									
Number of cases	216,332	109,322	107,010	175,966	89,586	86,380	21,989	10,145	11,844
Percent	100%	100%	100%	100%	100%	100%	100%	100%	100%
Localized	39	40	38	39	40	38	35	35	35
Regional	37	37	37	37	37	38	35	35	35
Distant	19	19	19	19	19	19	24	25	24
Unstaged	5	4	5	5	4	5	6	5	6
5-Year Relative Survival (Percent), 1999-2006 <sup>c</sup>									
Age at Diagnosis:									
Ages <45	67.1	65.9	68.5	68.7	67.1	70.6	59.0	57.6	60.4
Ages 45-54	68.9	68.0	70.1	70.0	69.1	71.1	59.1	56.8	61.3
Ages 55-64	67.5	67.1	68.1	68.5	68.0	69.2	59.0	58.5	59.5
Ages 65-74	66.0	65.7	66.4	66.7	66.3	67.0	58.2	57.5	58.8
Ages 75+	59.9	60.4	59.7	61.2	61.8	60.9	46.4	44.9	47.1
Ages <65	67.9	67.2	68.8	69.0	68.2	70.1	59.0	57.8	60.3
Ages 65+	62.9	63.3	62.6	63.8	64.3	63.4	52.8	52.6	53.0
Stage:									
All Stages	65.0	65.1	64.9	65.9	66.0	65.7	56.2	55.6	56.6
Localized	90.4	90.3	90.5	91.0	91.0	91.0	85.6	84.8	86.3
Regional	69.5	69.3	69.6	70.1	70.0	70.2	63.0	63.1	63.0
Distant	11.6	10.9	12.4	12.0	11.2	12.8	8.4	7.5	9.2
Unstaged	38.3	41.1	35.7	37.1	40.1	34.3	36.2	38.1	34.7

<sup>a</sup> Based on End Results data from a series of hospital registries and one population-based registry.

<sup>b</sup> Based on the SEER 9 areas (San Francisco, Connecticut, Detroit, Hawaii, Iowa, New Mexico, Seattle, Utah, Atlanta).

Based on follow-up of patients into 2007.

<sup>c</sup> Based on the SEER 17 areas (San Francisco, Connecticut, Detroit, Hawaii, Iowa, New Mexico, Seattle, Utah, Atlanta, San Jose-Monterey, Los Angeles, Alaska Native Registry, Rural Georgia, California excluding SF/SJM/LA, Kentucky, Louisiana and New Jersey). California excluding SF/SJM/LA, Kentucky, Louisiana, and New Jersey contribute cases for diagnosis years 2000-2006. The remaining 13 SEER Areas contribute cases for the entire period 1999-2006. Based on follow-up of patients into 2007.

<sup>d</sup> Period survival provides a more up-to-date estimate of survival by piecing together the most recent conditional survival estimates from several cohorts. It is computed here using three year calendar blocks (2004-2006: 0-1 year survival),

(2003-2005: 1-2 year survival), (2002-2004: 2-3 year survival), (2001-2003: 3-4 year survival), (2000-2002: 4-5 years survival).

<sup>e</sup> The difference between 1975-1977 and 1999-2006 is statistically significant ( $p < .05$ ).

<sup>f</sup> The standard error is between 5 and 10 percentage points.

<sup>g</sup> The standard error is greater than 10 percentage points.

- Statistic could not be calculated due to fewer than 25 cases during the time period.

Table 6.13  
Cancer of the Colon (Invasive)

5-Year Relative and Period Survival (Percent) by Race, Sex, Diagnosis Year, Stage and Age

	All Races			Whites			Blacks		
	Total	Males	Females	Total	Males	Females	Total	Males	Females
5-Year Relative Survival (Percent)									
Year of Diagnosis:									
1960-1963 <sup>a</sup>	-	-	-	43	42	44	34	32	35
1970-1973 <sup>a</sup>	-	-	-	49	47	50	37	36	38
1975-1977 <sup>b</sup>	51.7	51.0	52.3	51.9	51.3	52.4	46.6	45.6	47.0
1978-1980 <sup>b</sup>	53.3	52.3	54.2	53.5	52.4	54.4	49.5	48.0	50.5
1981-1983 <sup>b</sup>	56.3	56.8	55.9	56.6	57.3	55.9	49.7	46.0	52.3
1984-1986 <sup>b</sup>	59.2	59.6	58.8	59.9	60.3	59.5	50.0	49.7	50.3
1987-1989 <sup>b</sup>	61.3	61.8	60.8	61.8	62.5	61.1	53.2	51.5	54.5
1990-1992 <sup>b</sup>	63.0	63.3	62.7	63.8	64.1	63.5	54.1	55.8	52.8
1993-1995 <sup>b</sup>	61.0	60.9	61.0	61.6	61.5	61.7	52.4	51.8	52.7
1996-1998 <sup>b</sup>	63.3	63.5	63.2	64.1	64.2	64.0	54.7	56.0	53.6
1999-2006 <sup>b</sup>	65.8 <sup>e</sup>	66.2 <sup>e</sup>	65.4 <sup>e</sup>	67.2 <sup>e</sup>	67.8 <sup>e</sup>	66.6 <sup>e</sup>	55.4 <sup>e</sup>	54.4 <sup>e</sup>	56.2 <sup>e</sup>
5-Year Period Survival (Percent) <sup>cd</sup>									
Year of Diagnosis:									
1999-2006	65.3	65.6	65.0	66.1	66.6	65.7	57.0	56.3	57.6
Stage Distribution (%) 1999-2006 <sup>c</sup>									
All Stages									
Number of cases	153,409	73,833	79,576	124,827	60,539	64,288	16,597	7,414	9,183
Percent	100%	100%	100%	100%	100%	100%	100%	100%	100%
Localized	36	37	36	37	38	36	32	32	32
Regional	39	38	39	39	38	39	37	37	37
Distant	20	21	20	20	20	20	26	26	26
Unstaged	4	4	5	4	4	5	5	4	5
5-Year Relative Survival (Percent), 1999-2006 <sup>c</sup>									
Age at Diagnosis:									
Ages <45	66.0	66.1	66.0	67.9	66.6	69.2	59.1	61.7	56.7
Ages 45-54	66.5	65.7	67.3	67.7	67.2	68.4	57.1	54.9	59.1
Ages 55-64	66.1	65.9	66.4	67.3	67.0	67.6	57.6	57.8	57.4
Ages 65-74	65.8	65.7	65.8	66.5	66.5	66.5	58.2	57.7	58.7
Ages 75+	61.1	61.8	60.7	62.4	63.2	61.9	47.6	46.5	48.2
Ages <65	66.2	65.9	66.6	67.5	67.0	68.1	57.7	57.4	58.0
Ages 65+	63.3	63.9	62.8	64.3	65.0	63.8	53.3	53.2	53.3
Stage:									
All Stages	64.3	64.7	64.0	65.4	65.7	65.1	55.5	55.5	55.5
Localized	91.3	91.5	91.1	92.0	92.3	91.7	86.6	86.0	86.8
Regional	70.3	70.3	70.3	70.9	71.0	70.9	64.6	65.1	64.2
Distant	11.4	10.8	12.0	11.8	11.1	12.5	8.3	7.1	9.2
Unstaged	33.0	36.5	30.1	32.3	35.7	29.4	29.1	33.9	25.7

<sup>a</sup> Based on End Results data from a series of hospital registries and one population-based registry.  
<sup>b</sup> Based on the SEER 9 areas (San Francisco, Connecticut, Detroit, Hawaii, Iowa, New Mexico, Seattle, Utah, Atlanta).  
Based on follow-up of patients into 2007.  
<sup>c</sup> Based on the SEER 17 areas (San Francisco, Connecticut, Detroit, Hawaii, Iowa, New Mexico, Seattle, Utah, Atlanta, San Jose-Monterey, Los Angeles, Alaska Native Registry, Rural Georgia, California excluding SF/SJM/LA, Kentucky, Louisiana and New Jersey). California excluding SF/SJM/LA, Kentucky, Louisiana, and New Jersey contribute cases for diagnosis years 2000-2006. The remaining 13 SEER Areas contribute cases for the entire period 1999-2006. Based on follow-up of patients into 2007.  
<sup>d</sup> Period survival provides a more up-to-date estimate of survival by piecing together the most recent conditional survival estimates from several cohorts. It is computed here using three year calendar blocks (2004-2006: 0-1 year survival), (2003-2005: 1-2 year survival), (2002-2004: 2-3 year survival), (2001-2003: 3-4 year survival), (2000-2002: 4-5 years survival).  
<sup>e</sup> The difference between 1975-1977 and 1999-2006 is statistically significant (p<.05).  
<sup>f</sup> The standard error is between 5 and 10 percentage points.  
<sup>g</sup> The standard error is greater than 10 percentage points.  
- Statistic could not be calculated due to fewer than 25 cases during the time period.

Table 6.14  
Cancer of the Rectum (Invasive)

5-Year Relative and Period Survival (Percent) by Race, Sex, Diagnosis Year, Stage and Age

	All Races			Whites			Blacks		
	Total	Males	Females	Total	Males	Females	Total	Males	Females
5-Year Relative Survival (Percent)									
Year of Diagnosis:									
1960-1963 <sup>a</sup>	-	-	-	38	36	41	27	28	27
1970-1973 <sup>a</sup>	-	-	-	45	43	48	30	20	40
1975-1977 <sup>b</sup>	49.4	48.3	50.8	49.6	48.6	50.8	45.1	42.0	47.6
1978-1980 <sup>b</sup>	50.2	49.6	51.0	51.1	50.5	51.8	35.6	35.1	35.9
1981-1983 <sup>b</sup>	52.8	51.3	54.6	53.5	52.1	55.2	40.7	38.6	42.9
1984-1986 <sup>b</sup>	57.4	56.5	58.4	58.1	57.4	59.0	46.4	43.9	48.9
1987-1989 <sup>b</sup>	59.1	58.8	59.5	59.6	59.7	59.5	53.6	49.4	57.8
1990-1992 <sup>b</sup>	60.3	59.4	61.6	61.1	60.1	62.4	52.0	53.9	49.7
1993-1995 <sup>b</sup>	61.3	60.1	62.9	61.8	60.7	63.3	54.6	52.2	57.3
1996-1998 <sup>b</sup>	64.6	63.5	66.0	64.9	63.9	66.3	56.3	54.8	57.6
1999-2006 <sup>b</sup>	68.5 <sup>e</sup>	68.3 <sup>e</sup>	68.7 <sup>e</sup>	69.5 <sup>e</sup>	69.6 <sup>e</sup>	69.4 <sup>e</sup>	60.4 <sup>e</sup>	59.3 <sup>e</sup>	61.5 <sup>e</sup>
5-Year Period Survival (Percent) <sup>cd</sup>									
Year of Diagnosis:									
1999-2006	67.3	66.6	68.3	67.9	67.4	68.5	58.4	55.9	60.9
Stage Distribution (%) 1999-2006 <sup>c</sup>									
All Stages									
Number of cases	62,923	35,489	27,434	51,139	29,047	22,092	5,392	2,731	2,661
Percent	100%	100%	100%	100%	100%	100%	100%	100%	100%
Localized	44	44	45	44	44	44	42	40	44
Regional	33	34	32	34	34	33	30	31	28
Distant	17	17	16	17	17	16	20	22	18
Unstaged	6	5	7	6	5	6	8	8	9
5-Year Relative Survival (Percent), 1999-2006 <sup>c</sup>									
Age at Diagnosis:									
Ages <45	68.8	65.5	72.9	70.1	67.7	73.0	58.7	50.6	68.9
Ages 45-54	72.7	71.1	75.1	73.4	71.9	75.8	63.4	60.0	66.8
Ages 55-64	70.1	69.1	71.9	70.7	69.7	72.5	62.9	60.2	65.8
Ages 65-74	66.7	65.5	68.4	67.1	66.0	68.7	58.0	56.9	59.1
Ages 75+	55.9	56.2	55.8	57.2	57.7	56.8	40.5	37.9	41.2
Ages <65	70.9	69.3	73.3	71.6	70.2	73.8	62.3	58.6	66.7
Ages 65+	61.8	61.8	61.8	62.5	62.7	62.3	50.9	50.5	51.0
Stage:									
All Stages	66.5	65.9	67.2	67.1	66.7	67.5	58.1	55.9	60.3
Localized	88.6	88.3	89.1	89.1	88.8	89.5	83.4	82.2	84.6
Regional	67.1	67.1	67.1	67.8	67.8	67.9	57.0	56.6	57.2
Distant	12.3	11.1	14.0	12.5	11.5	14.0	9.1	9.0	9.2
Unstaged	47.1	47.7	46.3	45.3	46.5	43.8	48.2	44.1	51.0

<sup>a</sup> Based on End Results data from a series of hospital registries and one population-based registry.

<sup>b</sup> Based on the SEER 9 areas (San Francisco, Connecticut, Detroit, Hawaii, Iowa, New Mexico, Seattle, Utah, Atlanta).

Based on follow-up of patients into 2007.

<sup>c</sup> Based on the SEER 17 areas (San Francisco, Connecticut, Detroit, Hawaii, Iowa, New Mexico, Seattle, Utah, Atlanta, San Jose-Monterey, Los Angeles, Alaska Native Registry, Rural Georgia, California excluding SF/SJM/LA, Kentucky, Louisiana and New Jersey). California excluding SF/SJM/LA, Kentucky, Louisiana, and New Jersey contribute cases for diagnosis years 2000-2006. The remaining 13 SEER Areas contribute cases for the entire period 1999-2006. Based on follow-up of patients into 2007.

<sup>d</sup> Period survival provides a more up-to-date estimate of survival by piecing together the most recent conditional survival estimates from several cohorts. It is computed here using three year calendar blocks (2004-2006: 0-1 year survival),

(2003-2005: 1-2 year survival), (2002-2004: 2-3 year survival), (2001-2003: 3-4 year survival), (2000-2002: 4-5 years survival).

<sup>e</sup> The difference between 1975-1977 and 1999-2006 is statistically significant ( $p < .05$ ).

<sup>f</sup> The standard error is between 5 and 10 percentage points.

<sup>g</sup> The standard error is greater than 10 percentage points.

- Statistic could not be calculated due to fewer than 25 cases during the time period.

Table 7.8  
Cancer of the Corpus and Uterus, NOS (Invasive)

5-Year Relative and Period Survival (Percent) by Race, Diagnosis Year, Stage and Age

	All Races, Females			White Females			Black Females		
	All	<50	50+	All	<50	50+	All	<50	50+
5-Year Relative Survival (Percent)									
Year of Diagnosis:									
1960-1963 <sup>a</sup>	-	-	-	73	-	-	31	-	-
1970-1973 <sup>a</sup>	-	-	-	81	-	-	44	-	-
1975-1977 <sup>b</sup>	87.9	92.7	87.2	88.9	93.3	88.4	61.2	84.5 <sup>f</sup>	56.3
1978-1980 <sup>b</sup>	83.6	91.7	82.4	84.8	93.1	83.8	56.1	82.4 <sup>f</sup>	50.5
1981-1983 <sup>b</sup>	81.8	91.3	80.5	83.2	92.3	82.1	52.6	82.8 <sup>f</sup>	47.4
1984-1986 <sup>b</sup>	83.6	93.6	82.2	85.1	93.9	84.0	57.7	83.6 <sup>f</sup>	53.9
1987-1989 <sup>b</sup>	83.4	90.2	82.3	85.0	91.0	84.1	58.3	84.6 <sup>f</sup>	54.1
1990-1992 <sup>b</sup>	84.6	90.1	83.6	86.7	92.3	85.8	54.8	72.5 <sup>f</sup>	50.8
1993-1995 <sup>b</sup>	84.0	90.1	82.9	85.7	91.6	84.7	59.8	81.7	55.0
1996-1998 <sup>b</sup>	84.6	90.1	83.5	86.3	91.2	85.4	62.3	82.4	57.6
1999-2006 <sup>b</sup>	84.1 <sup>e</sup>	89.0 <sup>e</sup>	83.1 <sup>e</sup>	86.2 <sup>e</sup>	90.8	85.4 <sup>e</sup>	61.3	73.5	57.9
5-Year Period Survival (Percent) <sup>cd</sup>									
Year of Diagnosis:									
1999-2006	82.8	88.7	81.6	84.7	89.6	83.7	61.2	78.1	57.4
Stage Distribution (%) 1999-2006 <sup>c</sup>									
All Stages									
Number of cases	59,595	9,625	49,970	50,256	7,459	42,797	4,620	763	3,857
Percent	100%	100%	100%	100%	100%	100%	100%	100%	100%
Localized	69	73	68	70	74	70	53	63	51
Regional	19	17	20	19	17	19	25	17	27
Distant	8	7	8	7	6	8	15	13	16
Unstaged	4	4	4	4	3	4	6	7	6
5-Year Relative Survival (Percent), 1999-2006 <sup>c</sup>									
Age at Diagnosis:									
Ages <45	89.7	-	-	90.5	-	-	81.2	-	-
Ages 45-54	88.2	-	-	89.3	-	-	69.6	-	-
Ages 55-64	85.4	-	-	87.5	-	-	63.2	-	-
Ages 65-74	79.0	-	-	82.1	-	-	50.6	-	-
Ages 75+	71.7	-	-	73.9	-	-	45.4	-	-
Ages <65	87.0	-	-	88.6	-	-	68.7	-	-
Ages 65+	76.0	-	-	78.7	-	-	48.9	-	-
Stage:									
All Stages	82.7	89.1	81.3	84.5	89.9	83.5	60.6	78.0	56.6
Localized	95.5	96.4	95.3	96.3	96.5	96.3	84.1	91.9	81.8
Regional	67.5	81.2	64.9	69.9	82.5	67.6	45.1	69.8	41.5
Distant	17.1	29.5	15.0	18.4	32.3	16.2	9.9	17.9	8.4
Unstaged	55.5	86.7	48.3	55.8	85.8	49.7	37.3	81.4 <sup>f</sup>	25.7

<sup>a</sup> Based on End Results data from a series of hospital registries and one population-based registry.

<sup>b</sup> Based on the SEER 9 areas (San Francisco, Connecticut, Detroit, Hawaii, Iowa, New Mexico, Seattle, Utah, Atlanta).

Based on follow-up of patients into 2007.

<sup>c</sup> Based on the SEER 17 areas (San Francisco, Connecticut, Detroit, Hawaii, Iowa, New Mexico, Seattle, Utah, Atlanta, San Jose-Monterey, Los Angeles, Alaska Native Registry, Rural Georgia, California excluding SF/SJM/LA, Kentucky, Louisiana and New Jersey). California excluding SF/SJM/LA, Kentucky, Louisiana, and New Jersey contribute cases for diagnosis years 2000-2006. The remaining 13 SEER Areas contribute cases for the entire period 1999-2006. Based on follow-up of patients into 2007.

<sup>d</sup> Period survival provides a more up-to-date estimate of survival by piecing together the most recent conditional survival estimates from several cohorts. It is computed here using three year calendar blocks (2004-2006: 0-1 year survival),

(2003-2005: 1-2 year survival), (2002-2004: 2-3 year survival), (2001-2003: 3-4 year survival), (2000-2002: 4-5 years survival).

<sup>e</sup> The difference between 1975-1977 and 1999-2006 is statistically significant ( $p < .05$ ).

<sup>f</sup> The standard error is between 5 and 10 percentage points.

<sup>g</sup> The standard error is greater than 10 percentage points.

- Statistic could not be calculated due to fewer than 25 cases during the time period.



Table 8.8  
Cancer of the Esophagus (Invasive)

5-Year Relative and Period Survival (Percent) by Race, Sex, Diagnosis Year, Stage and Age

	All Races			Whites			Blacks		
	Total	Males	Females	Total	Males	Females	Total	Males	Females
5-Year Relative Survival (Percent)									
Year of Diagnosis:									
1960-1963 <sup>a</sup>	-	-	-	4	4	6	1	0	2
1970-1973 <sup>a</sup>	-	-	-	4	4	4	4	4	3
1975-1977 <sup>b</sup>	5.1	4.0	7.5	5.7	5.0	7.1	3.1	1.6	7.1
1978-1980 <sup>b</sup>	5.1	4.8	5.7	5.5	5.5	5.3	4.3	3.3	7.0
1981-1983 <sup>b</sup>	6.8	6.2	8.4	7.6	6.8	9.3	4.3	3.6	6.5
1984-1986 <sup>b</sup>	9.7	8.6	12.4	10.6	9.3	13.4	8.5	7.9	9.9
1987-1989 <sup>b</sup>	9.8	9.7	10.1	11.1	11.4	10.1	6.7	5.3	10.3
1990-1992 <sup>b</sup>	12.6	12.2	13.8	13.5	12.9	15.4	9.2	9.5	8.4
1993-1995 <sup>b</sup>	12.8	12.8	12.6	14.3	14.4	13.9	7.5	7.6	7.2
1996-1998 <sup>b</sup>	13.9	13.5	15.2	15.0	14.6	16.3	10.4	8.9	13.2
1999-2006 <sup>b</sup>	18.9 <sup>e</sup>	18.5 <sup>e</sup>	20.6 <sup>e</sup>	20.0 <sup>e</sup>	19.8 <sup>e</sup>	21.1 <sup>e</sup>	12.5 <sup>e</sup>	10.2 <sup>e</sup>	16.9 <sup>e</sup>
5-Year Period Survival (Percent) <sup>cd</sup>									
Year of Diagnosis:									
1999-2006	17.6	17.7	17.3	18.4	18.5	17.7	11.6	11.0	13.0
Stage Distribution (%) 1999-2006 <sup>c</sup>									
All Stages									
Number of cases	19,473	14,911	4,562	16,183	12,541	3,642	2,184	1,533	651
Percent	100%	100%	100%	100%	100%	100%	100%	100%	100%
Localized	23	22	25	24	23	26	20	19	22
Regional	31	31	28	30	31	27	32	32	31
Distant	32	34	26	32	33	25	32	34	29
Unstaged	15	13	20	14	13	21	16	15	18
5-Year Relative Survival (Percent), 1999-2006 <sup>c</sup>									
Age at Diagnosis:									
Ages <45	20.3	19.9	21.5	21.5	20.4	26.9	12.9	16.4 <sup>f</sup>	4.3
Ages 45-54	18.6	18.2	20.4	20.0	19.8	21.3	12.3	9.6	18.9
Ages 55-64	19.5	18.7	23.1	20.7	20.0	24.5	12.7	11.8	15.4
Ages 65-74	16.9	16.4	18.3	17.6	17.4	18.1	10.2	8.2	14.9
Ages 75+	12.2	12.0	12.6	12.6	12.3	13.2	7.8	9.2	5.5
Ages <65	19.2	18.7	22.2	20.5	20.0	23.8	12.5	11.3	15.9
Ages 65+	14.9	14.7	15.3	15.4	15.4	15.5	9.4	8.5	11.3
Stage:									
All Stages	17.0	16.8	17.7	17.8	17.7	18.2	11.2	10.2	13.8
Localized	37.4	38.8	33.0	39.2	40.9	33.8	21.4	20.3	23.8
Regional	18.8	18.1	21.2	19.9	19.4	21.6	12.0	10.1	17.8
Distant	3.2	3.0	3.8	3.3	3.2	3.8	2.3	1.5	4.1
Unstaged	12.1	11.7	12.7	11.4	11.2	11.9	14.1	15.4	11.1

<sup>a</sup> Based on End Results data from a series of hospital registries and one population-based registry.

<sup>b</sup> Based on the SEER 9 areas (San Francisco, Connecticut, Detroit, Hawaii, Iowa, New Mexico, Seattle, Utah, Atlanta).

Based on follow-up of patients into 2007.

<sup>c</sup> Based on the SEER 17 areas (San Francisco, Connecticut, Detroit, Hawaii, Iowa, New Mexico, Seattle, Utah, Atlanta, San Jose-Monterey, Los Angeles, Alaska Native Registry, Rural Georgia, California excluding SF/SJM/LA, Kentucky, Louisiana and New Jersey). California excluding SF/SJM/LA, Kentucky, Louisiana, and New Jersey contribute cases for diagnosis years 2000-2006. The remaining 13 SEER Areas contribute cases for the entire period 1999-2006. Based on follow-up of patients into 2007.

<sup>d</sup> Period survival provides a more up-to-date estimate of survival by piecing together the most recent conditional survival estimates from several cohorts. It is computed here using three year calendar blocks (2004-2006: 0-1 year survival),

(2003-2005: 1-2 year survival), (2002-2004: 2-3 year survival), (2001-2003: 3-4 year survival), (2000-2002: 4-5 years survival).

<sup>e</sup> The difference between 1975-1977 and 1999-2006 is statistically significant ( $p < .05$ ).

<sup>f</sup> The standard error is between 5 and 10 percentage points.

<sup>g</sup> The standard error is greater than 10 percentage points.

- Statistic could not be calculated due to fewer than 25 cases during the time period.

Table 9.8  
Hodgkin Lymphoma

5-Year Relative and Period Survival (Percent) by Race, Sex, Diagnosis Year and Age

	All Races			Whites			Blacks		
	Total	Males	Females	Total	Males	Females	Total	Males	Females
5-Year Relative Survival (Percent)									
Year of Diagnosis:									
1960-1963 <sup>a</sup>	-	-	-	40	34	48	-	-	-
1970-1973 <sup>a</sup>	-	-	-	67	66	69	-	-	-
1975-1977 <sup>b</sup>	73.6	71.9	75.8	74.0	72.3	76.1	71.4	69.4 <sup>f</sup>	75.5 <sup>f</sup>
1978-1980 <sup>b</sup>	73.3	72.1	75.0	73.5	71.7	75.8	71.7	75.8 <sup>f</sup>	64.0 <sup>f</sup>
1981-1983 <sup>b</sup>	75.6	74.3	77.3	76.0	75.1	77.1	73.5	71.2 <sup>f</sup>	77.4 <sup>f</sup>
1984-1986 <sup>b</sup>	79.5	77.7	81.7	80.0	78.2	82.3	74.8	75.5 <sup>f</sup>	72.3 <sup>f</sup>
1987-1989 <sup>b</sup>	80.4	77.8	83.6	81.0	78.1	84.5	72.8	72.2 <sup>f</sup>	73.4 <sup>f</sup>
1990-1992 <sup>b</sup>	82.8	80.5	85.6	84.0	82.4	85.9	73.9	64.1	84.4
1993-1995 <sup>b</sup>	82.9	80.2	86.0	83.4	81.1	86.2	78.5	74.3	82.9
1996-1998 <sup>b</sup>	85.9	85.1	86.8	86.7	85.2	88.3	81.2	83.8	78.5
1999-2006 <sup>b</sup>	86.8 <sup>e</sup>	85.2 <sup>e</sup>	88.5 <sup>e</sup>	87.7 <sup>e</sup>	86.6 <sup>e</sup>	89.0 <sup>e</sup>	81.7 <sup>e</sup>	77.1	86.5 <sup>e</sup>
5-Year Period Survival (Percent) <sup>cd</sup>									
Year of Diagnosis:									
1999-2006	84.6	83.4	85.9	84.9	83.9	86.1	81.1	78.2	83.8
Stage Distribution (%) 1999-2006 <sup>c</sup>									
All Stages									
Number of cases	14,359	7,801	6,558	12,057	6,539	5,518	1,493	797	696
Percent	100%	100%	100%	100%	100%	100%	100%	100%	100%
Localized	19	20	18	19	20	18	21	21	21
Regional	40	35	46	41	36	46	33	28	38
Distant	35	39	30	35	39	30	41	46	36
Unstaged	5	5	5	5	5	5	5	5	5
5-Year Relative Survival (Percent), 1999-2006 <sup>c</sup>									
Age at Diagnosis:									
Ages <45	92.1	90.8	93.5	92.9	91.8	94.1	85.5	81.4	89.6
Ages 45-54	82.8	79.8	87.5	83.8	80.7	88.6	73.9	70.5	79.8 <sup>f</sup>
Ages 55-64	73.3	69.7	78.4	73.0	70.3	76.9	75.2	63.2 <sup>f</sup>	86.4 <sup>f</sup>
Ages 65-74	56.7	54.2	59.6	56.6	54.0	59.7	61.4 <sup>f</sup>	59.3 <sup>f</sup>	57.5 <sup>g</sup>
Ages 75+	37.7	34.0	39.9	39.3	35.8	41.3	30.7 <sup>g</sup>	-	-
Ages <65	89.1	87.0	91.6	89.8	87.9	92.1	83.1	78.1	88.6
Ages 65+	49.1	47.6	50.5	49.7	48.2	51.1	52.3 <sup>f</sup>	49.7 <sup>f</sup>	50.9 <sup>g</sup>
Stage:									
All Stages	84.7	83.0	86.6	85.0	83.6	86.7	81.5	77.0	86.4
Localized	90.3	90.5	89.9	90.2	90.6	89.5	91.2	89.3	92.7
Regional	91.1	89.8	92.2	91.4	90.1	92.6	85.6	81.0	89.1
Distant	74.2	72.6	76.6	74.3	73.4	75.8	73.6	68.0	81.1
Unstaged	82.3	82.6	81.5	83.0	82.4	82.3	76.1 <sup>f</sup>	76.9 <sup>f</sup>	73.9 <sup>g</sup>

<sup>a</sup> Based on End Results data from a series of hospital registries and one population-based registry.<sup>b</sup> Based on the SEER 9 areas (San Francisco, Connecticut, Detroit, Hawaii, Iowa, New Mexico, Seattle, Utah, Atlanta).

Based on follow-up of patients into 2007.

<sup>c</sup> Based on the SEER 17 areas (San Francisco, Connecticut, Detroit, Hawaii, Iowa, New Mexico, Seattle, Utah, Atlanta, San Jose-Monterey, Los Angeles, Alaska Native Registry, Rural Georgia, California excluding SF/SJM/LA, Kentucky, Louisiana and New Jersey). California excluding SF/SJM/LA, Kentucky, Louisiana, and New Jersey contribute cases for diagnosis years 2000-2006.

The remaining 13 SEER Areas contribute cases for the entire period 1999-2006. Based on follow-up of patients into 2007.

<sup>d</sup> Period survival provides a more up-to-date estimate of survival by piecing together the most recent conditional survival estimates from several cohorts. It is computed here using three year calendar blocks (2004-2006: 0-1 year survival),

(2003-2005: 1-2 year survival), (2002-2004: 2-3 year survival), (2001-2003: 3-4 year survival), (2000-2002: 4-5 years survival).

<sup>e</sup> The difference between 1975-1977 and 1999-2006 is statistically significant (p<.05).<sup>f</sup> The standard error is between 5 and 10 percentage points.<sup>g</sup> The standard error is greater than 10 percentage points.

- Statistic could not be calculated due to fewer than 25 cases during the time period.

Table 10.6  
Kaposi Sarcoma

5-Year Relative and Period Survival (Percent) by Race, Sex, Diagnosis Year, Stage and Age

	All Races			Whites			Blacks		
	Total	Males	Females	Total	Males	Females	Total	Males	Females
5-Year Relative Survival (Percent)									
Year of Diagnosis:									
1960-1963 <sup>a</sup>	-	-	-	-	-	-	-	-	-
1970-1973 <sup>a</sup>	-	-	-	-	-	-	-	-	-
1975-1977 <sup>b</sup>	83.2 <sup>f</sup>	82.6 <sup>f</sup>	-	82.5 <sup>f</sup>	80.6 <sup>f</sup>	-	-	-	-
1978-1980 <sup>b</sup>	78.7 <sup>f</sup>	80.4 <sup>f</sup>	72.6 <sup>g</sup>	78.0 <sup>f</sup>	78.9 <sup>f</sup>	72.3 <sup>g</sup>	-	-	-
1981-1983 <sup>b</sup>	33.6	30.9	74.0 <sup>g</sup>	31.9	29.3	72.1 <sup>g</sup>	-	-	-
1984-1986 <sup>b</sup>	12.3	11.1	71.6 <sup>g</sup>	12.0	10.8	70.4 <sup>g</sup>	16.3	15.2	-
1987-1989 <sup>b</sup>	9.6	9.0	65.9 <sup>g</sup>	9.2	8.7	71.5 <sup>g</sup>	11.7	10.6	-
1990-1992 <sup>b</sup>	9.1	8.4	51.8 <sup>f</sup>	8.6	8.0	51.6 <sup>f</sup>	11.4	10.5	-
1993-1995 <sup>b</sup>	21.2	20.7	48.6 <sup>f</sup>	21.7	21.2	58.5 <sup>g</sup>	16.1	15.4	-
1996-1998 <sup>b</sup>	51.0	50.4	64.6 <sup>f</sup>	55.4	54.5	81.4 <sup>g</sup>	37.8	37.4	-
1999-2006 <sup>b</sup>	60.6 <sup>e</sup>	60.2 <sup>e</sup>	65.7 <sup>f</sup>	68.8 <sup>e</sup>	67.8 <sup>e</sup>	80.2 <sup>f</sup>	43.4	43.9	33.6 <sup>g</sup>
5-Year Period Survival (Percent) <sup>cd</sup>									
Year of Diagnosis:									
1999-2006	64.9	64.5	70.3	69.7	69.0	76.6	46.9	47.3	-
5-Year Relative Survival (Percent), 1999-2006 <sup>c</sup>									
Age at Diagnosis:									
Ages <45	57.7	58.1	40.2 <sup>f</sup>	62.2	62.2	-	44.1	45.2	16.5 <sup>f</sup>
Ages 45-54	57.6	58.6	-	59.6	60.5	-	44.2 <sup>f</sup>	45.4 <sup>f</sup>	-
Ages 55-64	74.8	75.4	-	77.1	77.3	-	51.9 <sup>g</sup>	51.4 <sup>g</sup>	-
Ages 65-74	77.9	80.0	69.0 <sup>f</sup>	76.1	78.1 <sup>f</sup>	68.8 <sup>g</sup>	-	-	-
Ages 75+	86.6 <sup>f</sup>	84.2 <sup>f</sup>	80.3 <sup>f</sup>	89.6 <sup>f</sup>	86.2 <sup>f</sup>	82.8 <sup>f</sup>	-	-	-
Ages <65	59.0	59.5	41.0 <sup>f</sup>	63.0	63.1	56.2 <sup>g</sup>	44.5	45.5	19.9 <sup>f</sup>
Ages 65+	83.1	82.8	79.5	83.9	82.5	81.5	73.5 <sup>g</sup>	-	-

<sup>a</sup> Based on End Results data from a series of hospital registries and one population-based registry.  
<sup>b</sup> Based on the SEER 9 areas (San Francisco, Connecticut, Detroit, Hawaii, Iowa, New Mexico, Seattle, Utah, Atlanta).  
Based on follow-up of patients into 2007.  
<sup>c</sup> Based on the SEER 17 areas (San Francisco, Connecticut, Detroit, Hawaii, Iowa, New Mexico, Seattle, Utah, Atlanta, San Jose-Monterey, Los Angeles, Alaska Native Registry, Rural Georgia, California excluding SF/SJM/LA, Kentucky, Louisiana and New Jersey). California excluding SF/SJM/LA, Kentucky, Louisiana, and New Jersey contribute cases for diagnosis years 2000-2006. The remaining 13 SEER Areas contribute cases for the entire period 1999-2006. Based on follow-up of patients into 2007.  
<sup>d</sup> Period survival provides a more up-to-date estimate of survival by piecing together the most recent conditional survival estimates from several cohorts. It is computed here using three year calendar blocks (2004-2006: 0-1 year survival), (2003-2005: 1-2 year survival), (2002-2004: 2-3 year survival), (2001-2003: 3-4 year survival), (2000-2002: 4-5 years survival).  
<sup>e</sup> The difference between 1975-1977 and 1999-2006 is statistically significant (p<.05).  
<sup>f</sup> The standard error is between 5 and 10 percentage points.  
<sup>g</sup> The standard error is greater than 10 percentage points.  
- Statistic could not be calculated due to fewer than 25 cases during the time period.

Table 11.8  
Cancer of the Kidney and Renal Pelvis (Invasive)

5-Year Relative and Period Survival (Percent) by Race, Sex, Diagnosis Year, Stage and Age

	All Races			Whites			Blacks		
	Total	Males	Females	Total	Males	Females	Total	Males	Females
5-Year Relative Survival (Percent)									
Year of Diagnosis:									
1960-1963 <sup>a</sup>	-	-	-	37	36	39	38	38	37
1970-1973 <sup>a</sup>	-	-	-	46	44	50	44	40	49
1975-1977 <sup>b</sup>	51.1	51.2	51.0	50.8	51.1	50.4	49.8	48.4	52.2 <sup>f</sup>
1978-1980 <sup>b</sup>	54.0	53.7	54.5	53.7	53.9	53.2	57.5	52.0	64.5 <sup>f</sup>
1981-1983 <sup>b</sup>	51.3	52.2	49.9	51.2	52.3	49.3	51.9	51.7	52.0
1984-1986 <sup>b</sup>	55.9	56.4	55.1	56.1	56.7	55.1	54.1	50.8	59.1
1987-1989 <sup>b</sup>	57.9	58.2	57.5	58.5	59.2	57.5	55.9	53.4	58.6
1990-1992 <sup>b</sup>	61.4	61.4	61.3	62.0	62.2	61.6	57.6	55.7	59.7
1993-1995 <sup>b</sup>	62.8	62.7	63.0	63.3	63.8	62.6	58.6	55.5	63.1
1996-1998 <sup>b</sup>	64.0	64.0	63.9	63.5	63.7	63.2	67.6	68.2	65.9
1999-2006 <sup>b</sup>	69.6 <sup>e</sup>	69.0 <sup>e</sup>	70.6 <sup>e</sup>	69.9 <sup>e</sup>	69.4 <sup>e</sup>	70.6 <sup>e</sup>	67.0 <sup>e</sup>	65.2 <sup>e</sup>	69.5 <sup>e</sup>
5-Year Period Survival (Percent) <sup>cd</sup>									
Year of Diagnosis:									
1999-2006	71.6	71.4	71.9	71.9	71.6	72.4	68.1	68.5	67.5
Stage Distribution (%) 1999-2006 <sup>c</sup>									
All Stages									
Number of cases	55,831	34,199	21,632	47,017	28,893	18,124	5,416	3,224	2,192
Percent	100%	100%	100%	100%	100%	100%	100%	100%	100%
Localized	59	58	61	59	58	61	64	63	66
Regional	18	18	17	18	19	17	13	13	13
Distant	19	20	17	19	20	17	18	19	17
Unstaged	4	4	5	4	4	5	5	4	5
5-Year Relative Survival (Percent), 1999-2006 <sup>c</sup>									
Age at Diagnosis:									
Ages <45	81.7	80.0	84.2	82.9	81.1	85.5	73.7	70.1	77.9
Ages 45-54	75.0	72.9	79.1	75.2	72.9	79.9	70.8	69.6	73.2
Ages 55-64	69.6	68.7	71.4	70.2	69.3	72.0	65.2	63.7	68.2
Ages 65-74	65.5	64.9	66.4	65.4	64.8	66.5	64.7	65.2	63.5
Ages 75+	55.3	56.9	53.8	56.1	57.9	54.3	48.9	47.6	49.5
Ages <65	74.0	72.3	77.1	74.4	72.7	77.7	69.5	67.4	73.0
Ages 65+	61.4	62.0	60.5	61.6	62.3	60.7	59.1	60.2	57.7
Stage:									
All Stages	68.8	68.5	69.4	69.0	68.7	69.6	66.3	65.5	67.4
Localized	90.3	90.2	90.4	90.9	90.8	91.0	85.2	85.2	85.1
Regional	62.7	64.4	59.6	63.0	64.8	59.9	57.6	58.8	55.4
Distant	10.6	11.4	9.3	10.2	11.1	8.5	12.0	10.7	13.9
Unstaged	37.8	38.5	36.4	36.5	38.1	34.0	38.9	35.2	42.0 <sup>f</sup>

<sup>a</sup> Based on End Results data from a series of hospital registries and one population-based registry.

<sup>b</sup> Based on the SEER 9 areas (San Francisco, Connecticut, Detroit, Hawaii, Iowa, New Mexico, Seattle, Utah, Atlanta).

Based on follow-up of patients into 2007.

<sup>c</sup> Based on the SEER 17 areas (San Francisco, Connecticut, Detroit, Hawaii, Iowa, New Mexico, Seattle, Utah, Atlanta, San Jose-Monterey, Los Angeles, Alaska Native Registry, Rural Georgia, California excluding SF/SJM/LA, Kentucky, Louisiana and New Jersey). California excluding SF/SJM/LA, Kentucky, Louisiana, and New Jersey contribute cases for diagnosis years 2000-2006. The remaining 13 SEER Areas contribute cases for the entire period 1999-2006. Based on follow-up of patients into 2007.

<sup>d</sup> Period survival provides a more up-to-date estimate of survival by piecing together the most recent conditional survival estimates from several cohorts. It is computed here using three year calendar blocks (2004-2006: 0-1 year survival),

(2003-2005: 1-2 year survival), (2002-2004: 2-3 year survival), (2001-2003: 3-4 year survival), (2000-2002: 4-5 years survival).

<sup>e</sup> The difference between 1975-1977 and 1999-2006 is statistically significant ( $p < .05$ ).

<sup>f</sup> The standard error is between 5 and 10 percentage points.

<sup>g</sup> The standard error is greater than 10 percentage points.

- Statistic could not be calculated due to fewer than 25 cases during the time period.

Table 12.8  
Cancer of the Larynx (Invasive)

5-Year Relative and Period Survival (Percent) by Race, Sex, Diagnosis Year, Stage and Age

	All Races			Whites			Blacks		
	Total	Males	Females	Total	Males	Females	Total	Males	Females
5-Year Relative Survival (Percent)									
Year of Diagnosis:									
1960-1963 <sup>a</sup>	-	-	-	53	54	46	-	-	-
1970-1973 <sup>a</sup>	-	-	-	62	63	56	-	-	-
1975-1977 <sup>b</sup>	66.8	67.5	62.9	67.5	68.4	62.6	59.1	58.1	63.7 <sup>f</sup>
1978-1980 <sup>b</sup>	65.9	66.1	64.5	66.8	67.1	65.3	57.0	57.3	56.0 <sup>f</sup>
1981-1983 <sup>b</sup>	68.6	68.8	67.7	70.0	70.2	69.2	56.5	57.2	53.1 <sup>f</sup>
1984-1986 <sup>b</sup>	65.8	66.5	62.4	67.7	68.4	64.3	52.9	53.4	50.9 <sup>f</sup>
1987-1989 <sup>b</sup>	66.4	67.4	62.3	67.7	69.2	61.9	57.0	55.0	62.6 <sup>f</sup>
1990-1992 <sup>b</sup>	66.3	67.1	63.1	68.2	68.9	65.5	53.2	53.8	51.0 <sup>f</sup>
1993-1995 <sup>b</sup>	64.0	65.6	57.3	65.6	67.4	58.2	53.1	54.4	47.9 <sup>f</sup>
1996-1998 <sup>b</sup>	65.4	67.2	59.3	67.4	68.9	61.9	54.0	57.2	44.6 <sup>f</sup>
1999-2006 <sup>b</sup>	62.9 <sup>e</sup>	63.5 <sup>e</sup>	60.8	65.4	66.0	63.1	49.3 <sup>e</sup>	50.0	47.0
5-Year Period Survival (Percent) <sup>cd</sup>									
Year of Diagnosis:									
1999-2006	60.4	61.4	56.4	61.8	62.8	57.8	50.0	51.3	44.5
Stage Distribution (%) 1999-2006 <sup>c</sup>									
All Stages									
Number of cases	16,095	12,917	3,178	13,078	10,456	2,622	2,323	1,865	458
Percent	100%	100%	100%	100%	100%	100%	100%	100%	100%
Localized	58	60	52	60	62	54	47	47	45
Regional	20	18	27	19	17	26	24	22	31
Distant	17	17	15	16	16	15	25	26	20
Unstaged	5	5	6	6	5	6	5	5	5
5-Year Relative Survival (Percent), 1999-2006 <sup>c</sup>									
Age at Diagnosis:									
Ages <45	71.3	69.8	74.5	73.7	72.2	76.9	58.4	55.9 <sup>f</sup>	64.6 <sup>f</sup>
Ages 45-54	62.1	62.5	60.4	65.8	66.2	63.9	47.5	48.0	45.3 <sup>f</sup>
Ages 55-64	61.7	62.3	58.6	63.2	63.9	60.1	51.0	52.1	46.7 <sup>f</sup>
Ages 65-74	60.5	61.6	56.0	60.5	61.5	56.8	54.3	57.3	43.0 <sup>f</sup>
Ages 75+	56.6	59.1	47.7	58.0	60.4	49.6	41.3 <sup>f</sup>	42.7 <sup>f</sup>	36.6 <sup>g</sup>
Ages <65	62.8	63.1	61.6	65.1	65.4	63.8	50.5	50.9	49.0
Ages 65+	59.4	61.0	53.4	59.9	61.3	54.5	51.1	53.7	41.4 <sup>f</sup>
Stage:									
All Stages	61.3	62.2	57.9	62.8	63.6	59.5	50.7	51.8	46.6
Localized	77.6	78.4	73.9	77.9	78.6	74.6	72.4	73.8	66.5
Regional	41.5	41.1	42.5	42.7	42.0	44.5	36.2	37.3	33.0
Distant	33.2	32.8	35.3	34.6	34.1	36.6	27.6	27.7	26.4 <sup>f</sup>
Unstaged	46.7	47.7	43.5 <sup>f</sup>	46.8	47.9	43.4 <sup>f</sup>	31.4 <sup>f</sup>	32.2 <sup>f</sup>	-

<sup>a</sup> Based on End Results data from a series of hospital registries and one population-based registry.

<sup>b</sup> Based on the SEER 9 areas (San Francisco, Connecticut, Detroit, Hawaii, Iowa, New Mexico, Seattle, Utah, Atlanta).

Based on follow-up of patients into 2007.

<sup>c</sup> Based on the SEER 17 areas (San Francisco, Connecticut, Detroit, Hawaii, Iowa, New Mexico, Seattle, Utah, Atlanta, San Jose-Monterey, Los Angeles, Alaska Native Registry, Rural Georgia, California excluding SF/SJM/LA, Kentucky, Louisiana and New Jersey). California excluding SF/SJM/LA, Kentucky, Louisiana, and New Jersey contribute cases for diagnosis years 2000-2006. The remaining 13 SEER Areas contribute cases for the entire period 1999-2006. Based on follow-up of patients into 2007.

<sup>d</sup> Period survival provides a more up-to-date estimate of survival by piecing together the most recent conditional survival estimates from several cohorts. It is computed here using three year calendar blocks (2004-2006: 0-1 year survival),

(2003-2005: 1-2 year survival), (2002-2004: 2-3 year survival), (2001-2003: 3-4 year survival), (2000-2002: 4-5 years survival).

<sup>e</sup> The difference between 1975-1977 and 1999-2006 is statistically significant ( $p < .05$ ).

<sup>f</sup> The standard error is between 5 and 10 percentage points.

<sup>g</sup> The standard error is greater than 10 percentage points.

- Statistic could not be calculated due to fewer than 25 cases during the time period.

Table 13.14  
Leukemia

5-Year Relative and Period Survival (Percent) by Race, Sex, Diagnosis Year and Age

	All Races			Whites			Blacks		
	Total	Males	Females	Total	Males	Females	Total	Males	Females
5-Year Relative Survival (Percent)									
Year of Diagnosis:									
1960-1963 <sup>a</sup>	-	-	-	14	-	-	-	-	-
1970-1973 <sup>a</sup>	-	-	-	22	-	-	-	-	-
1975-1977 <sup>b</sup>	35.6	34.5	36.8	36.1	35.2	37.2	33.6	30.5	36.8
1978-1980 <sup>b</sup>	37.7	36.7	39.0	38.4	37.5	39.7	29.3	28.8	30.0
1981-1983 <sup>b</sup>	39.1	38.8	39.5	40.1	39.9	40.4	34.1	33.4	35.0
1984-1986 <sup>b</sup>	42.0	41.5	42.7	43.3	42.9	43.9	33.7	32.6	35.0
1987-1989 <sup>b</sup>	44.5	46.0	42.6	45.6	47.6	43.0	36.8	35.0	39.0
1990-1992 <sup>b</sup>	46.8	46.4	47.4	48.1	48.2	48.1	37.2	31.8	43.1
1993-1995 <sup>b</sup>	48.9	49.6	48.0	50.0	50.7	49.0	42.3	41.8	42.9
1996-1998 <sup>b</sup>	49.9	50.1	49.5	51.3	51.1	51.5	39.4	40.2	38.2
1999-2006 <sup>b</sup>	55.3 <sup>e</sup>	55.7 <sup>e</sup>	54.9 <sup>e</sup>	56.2 <sup>e</sup>	56.5 <sup>e</sup>	55.8 <sup>e</sup>	47.2 <sup>e</sup>	48.3 <sup>e</sup>	46.0
5-Year Period Survival (Percent) <sup>cd</sup>									
Year of Diagnosis:									
1999-2006	56.6	56.7	56.4	56.8	56.9	56.6	49.6	49.9	49.5
5-Year Relative Survival (Percent), 1999-2006 <sup>c</sup>									
Age at Diagnosis:									
Ages <45	68.8	68.0	69.8	70.0	69.6	70.6	57.7	54.6	61.9
Ages 45-54	61.5	63.0	59.2	62.8	64.0	61.0	49.1	51.9	44.5
Ages 55-64	57.6	57.6	57.5	58.4	58.1	59.1	43.9	44.7	42.7
Ages 65-74	47.8	46.1	50.2	48.3	46.4	51.2	41.1	39.8	42.4
Ages 75+	33.9	33.1	34.7	34.5	33.7	35.2	25.9	24.2	26.7
Ages <65	63.9	63.7	64.2	64.9	64.7	65.3	52.3	51.5	53.4
Ages 65+	40.6	40.0	41.2	41.0	40.4	41.8	34.6	34.5	34.6

<sup>a</sup> Based on End Results data from a series of hospital registries and one population-based registry.<sup>b</sup> Based on the SEER 9 areas (San Francisco, Connecticut, Detroit, Hawaii, Iowa, New Mexico, Seattle, Utah, Atlanta).

Based on follow-up of patients into 2007.

<sup>c</sup> Based on the SEER 17 areas (San Francisco, Connecticut, Detroit, Hawaii, Iowa, New Mexico, Seattle, Utah, Atlanta, San Jose-Monterey, Los Angeles, Alaska Native Registry, Rural Georgia, California excluding SF/SJM/LA, Kentucky, Louisiana and New Jersey). California excluding SF/SJM/LA, Kentucky, Louisiana, and New Jersey contribute cases for diagnosis years 2000-2006. The remaining 13 SEER Areas contribute cases for the entire period 1999-2006. Based on follow-up of patients into 2007.<sup>d</sup> Period survival provides a more up-to-date estimate of survival by piecing together the most recent conditional survival estimates from several cohorts. It is computed here using three year calendar blocks (2004-2006: 0-1 year survival), (2003-2005: 1-2 year survival), (2002-2004: 2-3 year survival), (2001-2003: 3-4 year survival), (2000-2002: 4-5 years survival). The difference between 1975-1977 and 1999-2006 is statistically significant (p<.05).<sup>e</sup> The standard error is between 5 and 10 percentage points.<sup>f</sup> The standard error is greater than 10 percentage points.<sup>g</sup> The standard error is greater than 10 percentage points.

- Statistic could not be calculated due to fewer than 25 cases during the time period.

Table 13.15  
Lymphocytic Leukemia

5-Year Relative and Period Survival (Percent) by Race, Sex, Diagnosis Year and Age

	All Races			Whites			Blacks		
	Total	Males	Females	Total	Males	Females	Total	Males	Females
<u>Acute Lymphocytic Leukemia</u>									
5-Year Relative Survival (Percent)									
Year of Diagnosis:									
1975-1977 <sup>a</sup>	42.4	38.6	47.4	42.8	39.3	47.7	34.5 <sup>e</sup>	-	-
1978-1980 <sup>a</sup>	50.4	46.8	55.6	50.8	47.4	55.6	31.7 <sup>e</sup>	31.4 <sup>e</sup>	-
1981-1983 <sup>a</sup>	51.9	48.5	56.4	52.8	49.5	57.2	43.4 <sup>e</sup>	37.6 <sup>e</sup>	49.1 <sup>e</sup>
1984-1986 <sup>a</sup>	53.7	50.5	58.0	54.7	50.8	60.1	36.4 <sup>e</sup>	44.2 <sup>e</sup>	27.4 <sup>e</sup>
1987-1989 <sup>a</sup>	56.1	55.7	56.6	56.8	57.1	56.4	46.0 <sup>e</sup>	43.1 <sup>e</sup>	48.0 <sup>e</sup>
1990-1992 <sup>a</sup>	60.0	56.4	65.0	59.9	57.1	64.0	57.7 <sup>e</sup>	50.9 <sup>e</sup>	63.8 <sup>e</sup>
1993-1995 <sup>a</sup>	61.5	58.7	65.3	61.1	58.7	64.2	53.9 <sup>e</sup>	45.8 <sup>e</sup>	65.0 <sup>e</sup>
1996-1998 <sup>b</sup>	66.7	65.5	68.2	67.5	65.3	70.3	56.5 <sup>e</sup>	60.4 <sup>e</sup>	50.6 <sup>e</sup>
1999-2006 <sup>a</sup>	66.4 <sup>d</sup>	65.4 <sup>d</sup>	67.8 <sup>d</sup>	67.3 <sup>d</sup>	66.5 <sup>d</sup>	68.3 <sup>d</sup>	59.5 <sup>d</sup>	56.9 <sup>e</sup>	62.6 <sup>e</sup>
5-Year Period Survival (Percent) <sup>bc</sup>									
Year of Diagnosis:									
1999-2006	66.2	66.2	66.2	66.1	66.3	65.7	62.0	59.4	64.8
5-Year Relative Survival (Percent), 1999-2006 <sup>b</sup>									
Age at Diagnosis:									
Ages <45	75.0	73.4	77.2	75.5	74.2	77.4	69.1	63.8	75.8
Ages 45-54	26.6	25.8	27.7	26.4	24.7	28.7	17.7 <sup>e</sup>	-	-
Ages 55-64	18.1	17.6	18.7	18.5	17.7	19.7	-	-	-
Ages 65-74	9.8	8.6	11.2	10.6	9.6	11.9	-	-	-
Ages 75+	6.1	5.6	6.5	4.6	4.1	4.7	-	-	-
Ages <65	69.1	67.9	70.6	69.5	68.5	70.9	63.1	59.1	67.9
Ages 65+	8.4	7.3	8.9	8.3	7.3	8.5	4.4	-	-
<u>Chronic Lymphocytic Leukemia</u>									
5-Year Relative Survival (Percent)									
Year of Diagnosis:									
1975-1977 <sup>a</sup>	69.3	67.1	72.0	70.1	67.9	73.1	57.3 <sup>e</sup>	56.4 <sup>e</sup>	58.2 <sup>e</sup>
1978-1980 <sup>a</sup>	70.5	67.6	74.2	71.2	68.1	75.2	59.2 <sup>e</sup>	59.5 <sup>e</sup>	58.4 <sup>e</sup>
1981-1983 <sup>a</sup>	68.2	67.6	69.0	68.9	68.6	69.3	57.6 <sup>e</sup>	54.3 <sup>e</sup>	62.9 <sup>e</sup>
1984-1986 <sup>a</sup>	74.2	72.9	76.1	74.5	73.1	76.4	70.2 <sup>e</sup>	67.3 <sup>e</sup>	70.5 <sup>e</sup>
1987-1989 <sup>a</sup>	74.6	74.6	74.7	75.7	75.9	75.5	60.6	58.9 <sup>e</sup>	63.1 <sup>e</sup>
1990-1992 <sup>a</sup>	75.6	74.1	77.7	76.7	75.3	78.7	54.3	46.1 <sup>e</sup>	62.6 <sup>e</sup>
1993-1995 <sup>a</sup>	78.2	77.8	78.8	79.2	78.8	79.8	64.5	63.3 <sup>e</sup>	65.9 <sup>e</sup>
1996-1998 <sup>b</sup>	76.5	74.6	79.2	77.5	75.7	80.1	58.2 <sup>e</sup>	51.6 <sup>e</sup>	66.3 <sup>e</sup>
1999-2006 <sup>a</sup>	79.7 <sup>d</sup>	78.6 <sup>d</sup>	81.4 <sup>d</sup>	80.1 <sup>d</sup>	78.9 <sup>d</sup>	82.2 <sup>d</sup>	67.2	66.2	68.9 <sup>e</sup>
5-Year Period Survival (Percent) <sup>bc</sup>									
Year of Diagnosis:									
1999-2006	79.2	77.3	81.9	79.4	77.3	82.5	66.1	65.0	67.1
5-Year Relative Survival (Percent), 1999-2006 <sup>b</sup>									
Age at Diagnosis:									
Ages <45	91.1	89.2	94.3	92.8	90.7	96.5	71.5 <sup>e</sup>	-	-
Ages 45-54	88.8	87.5	91.5	89.8	88.2	93.1	72.5	74.0 <sup>e</sup>	68.8 <sup>f</sup>
Ages 55-64	85.0	82.3	90.5	85.5	83.0	90.7	68.3	62.8	79.2 <sup>e</sup>
Ages 65-74	80.7	77.5	85.5	81.0	77.5	86.4	70.0	67.6 <sup>e</sup>	72.5 <sup>e</sup>
Ages 75+	65.2	62.6	67.8	65.4	62.5	68.3	47.8	38.6 <sup>e</sup>	54.4 <sup>e</sup>
Ages <65	86.7	84.5	91.1	87.4	85.2	91.9	70.0	67.2	75.7
Ages 65+	72.9	70.7	75.6	73.0	70.6	76.0	60.9	57.0	64.3

<sup>a</sup> Based on the SEER 9 areas (San Francisco, Connecticut, Detroit, Hawaii, Iowa, New Mexico, Seattle, Utah, Atlanta).

Based on follow-up of patients into 2007.

<sup>b</sup> Based on the SEER 17 areas (San Francisco, Connecticut, Detroit, Hawaii, Iowa, New Mexico, Seattle, Utah, Atlanta, San Jose-Monterey, Los Angeles, Alaska Native Registry, Rural Georgia, California excluding SF/SJM/LA, Kentucky, Louisiana and New Jersey). California excluding SF/SJM/LA, Kentucky, Louisiana, and New Jersey contribute cases for diagnosis years 2000-2006. The remaining 13 SEER Areas contribute cases for the entire period 1999-2006. Based on follow-up of patients into 2007.

<sup>c</sup> Period survival provides a more up-to-date estimate of survival by piecing together the most recent conditional survival estimates from several cohorts. It is computed here using three year calendar blocks (2004-2006: 0-1 year survival), (2003-2005: 1-2 year survival), (2002-2004: 2-3 year survival), (2001-2003: 3-4 year survival), (2000-2002: 4-5 years survival).

<sup>d</sup> The difference between 1975-1977 and 1999-2006 is statistically significant (p<.05).

<sup>e</sup> The standard error is between 5 and 10 percentage points.

<sup>f</sup> The standard error is greater than 10 percentage points.

- Statistic could not be calculated due to fewer than 25 cases during the time period.

Table 13.16  
Myeloid Leukemia

5-Year Relative and Period Survival (Percent) by Race, Sex, Diagnosis Year and Age

	All Races			Whites			Blacks		
	Total	Males	Females	Total	Males	Females	Total	Males	Females
<u>Acute Myeloid Leukemia</u>									
5-Year Relative Survival (Percent)									
Year of Diagnosis:									
1975-1977 <sup>a</sup>	6.7	6.2	7.3	6.3	6.1	6.5	10.6	8.6	12.1 <sup>e</sup>
1978-1980 <sup>a</sup>	8.4	7.8	9.1	7.8	6.9	9.0	10.2	7.2	13.2
1981-1983 <sup>a</sup>	9.4	8.2	10.8	8.7	7.3	10.4	12.5	16.4 <sup>e</sup>	8.8
1984-1986 <sup>a</sup>	11.9	10.5	13.5	11.7	10.4	13.1	10.1	6.7	13.3
1987-1989 <sup>a</sup>	12.8	10.4	15.4	12.7	11.1	14.5	10.1	4.7	16.9 <sup>e</sup>
1990-1992 <sup>a</sup>	15.3	13.8	17.0	15.1	13.5	16.8	14.5	14.1	14.7
1993-1995 <sup>a</sup>	18.0	16.6	19.6	17.3	15.9	19.0	23.5	22.8 <sup>e</sup>	23.2
1996-1998 <sup>b</sup>	19.1	18.1	20.2	17.8	16.7	19.0	24.6	26.9 <sup>e</sup>	21.3 <sup>e</sup>
1999-2006 <sup>a</sup>	24.2 <sup>d</sup>	22.4 <sup>d</sup>	26.3 <sup>d</sup>	23.9 <sup>d</sup>	21.6 <sup>d</sup>	26.5 <sup>d</sup>	23.5 <sup>d</sup>	25.4 <sup>d</sup>	20.2
5-Year Period Survival (Percent) <sup>bc</sup>									
Year of Diagnosis:									
1999-2006	26.0	24.5	27.7	25.3	24.0	26.7	28.6	29.5	27.3
5-Year Relative Survival (Percent), 1999-2006 <sup>b</sup>									
Age at Diagnosis:									
Ages <45	52.1	49.9	54.6	53.3	51.4	55.4	42.0	40.4	43.6
Ages 45-54	32.0	31.5	32.7	32.8	32.3	33.6	25.6	25.4	25.4 <sup>e</sup>
Ages 55-64	19.7	16.9	23.3	19.5	16.6	23.4	17.1	16.5	16.9
Ages 65-74	8.7	6.8	11.2	8.5	6.6	11.3	8.0	6.2	9.7
Ages 75+	1.9	1.8	1.9	1.9	1.9	1.8	1.4	-	1.7
Ages <65	37.9	35.5	40.7	38.1	35.6	41.3	32.3	31.8	32.5
Ages 65+	5.1	4.5	5.8	5.0	4.4	5.7	5.4	4.5	5.8
<u>Chronic Myeloid Leukemia</u>									
5-Year Relative Survival (Percent)									
Year of Diagnosis:									
1975-1977 <sup>a</sup>	24.0	21.6	27.2	22.7	20.5	25.6	28.7 <sup>e</sup>	22.6 <sup>e</sup>	36.1 <sup>e</sup>
1978-1980 <sup>a</sup>	25.1	24.1	26.2	25.2	24.7	25.7	22.0 <sup>e</sup>	20.9 <sup>e</sup>	23.6 <sup>e</sup>
1981-1983 <sup>a</sup>	30.4	26.4	34.9	30.9	27.4	34.7	30.1	20.6 <sup>e</sup>	41.3 <sup>e</sup>
1984-1986 <sup>a</sup>	23.9	21.6	27.3	24.5	21.6	28.7	22.2	21.4 <sup>e</sup>	22.6 <sup>e</sup>
1987-1989 <sup>a</sup>	32.2	32.9	31.1	32.1	33.4	30.4	35.7 <sup>e</sup>	30.2 <sup>e</sup>	43.8 <sup>e</sup>
1990-1992 <sup>a</sup>	32.5	31.1	34.2	32.1	31.9	32.5	35.2 <sup>e</sup>	24.2 <sup>e</sup>	46.9 <sup>e</sup>
1993-1995 <sup>a</sup>	37.4	37.0	37.9	37.3	37.3	37.2	35.7 <sup>e</sup>	32.8 <sup>e</sup>	40.4 <sup>e</sup>
1996-1998 <sup>b</sup>	38.9	39.3	38.2	40.1	39.4	40.7	29.8 <sup>e</sup>	29.1 <sup>e</sup>	30.0 <sup>e</sup>
1999-2006 <sup>a</sup>	54.6 <sup>d</sup>	53.5 <sup>d</sup>	56.2 <sup>d</sup>	53.6 <sup>d</sup>	52.6 <sup>d</sup>	54.9 <sup>d</sup>	54.8 <sup>d</sup>	54.6 <sup>de</sup>	54.9 <sup>e</sup>
5-Year Period Survival (Percent) <sup>bc</sup>									
Year of Diagnosis:									
1999-2006	60.5	59.9	61.5	59.3	58.9	59.8	60.0	58.8	61.4
5-Year Relative Survival (Percent), 1999-2006 <sup>b</sup>									
Age at Diagnosis:									
Ages <45	78.2	76.7	80.5	79.0	77.1	82.0	70.8	70.5	70.9 <sup>e</sup>
Ages 45-54	77.4	75.6	79.7	78.0	77.4	78.5	67.0 <sup>e</sup>	59.3 <sup>e</sup>	73.9 <sup>e</sup>
Ages 55-64	63.0	62.2	64.4	63.3	61.6	66.0	53.9 <sup>e</sup>	59.4 <sup>e</sup>	44.8 <sup>e</sup>
Ages 65-74	39.5	35.9	45.3	38.4	34.3	44.9	35.8 <sup>e</sup>	33.6 <sup>e</sup>	38.6 <sup>e</sup>
Ages 75+	24.7	23.2	26.1	24.9	23.5	26.3	20.6 <sup>e</sup>	9.3 <sup>e</sup>	27.9 <sup>e</sup>
Ages <65	73.9	72.5	76.0	74.3	72.7	76.6	66.1	65.5	66.2
Ages 65+	31.7	30.0	33.8	31.1	29.2	33.3	30.0	26.1 <sup>e</sup>	33.6 <sup>e</sup>

<sup>a</sup> Based on the SEER 9 areas (San Francisco, Connecticut, Detroit, Hawaii, Iowa, New Mexico, Seattle, Utah, Atlanta).

Based on follow-up of patients into 2007.

<sup>b</sup> Based on the SEER 17 areas (San Francisco, Connecticut, Detroit, Hawaii, Iowa, New Mexico, Seattle, Utah, Atlanta, San Jose-Monterey, Los Angeles, Alaska Native Registry, Rural Georgia, California excluding SF/SJM/LA, Kentucky, Louisiana and New Jersey). California excluding SF/SJM/LA, Kentucky, Louisiana, and New Jersey contribute cases for diagnosis years 2000-2006. The remaining 13 SEER Areas contribute cases for the entire period 1999-2006. Based on follow-up of patients into 2007.

<sup>c</sup> Period survival provides a more up-to-date estimate of survival by piecing together the most recent conditional survival estimates from several cohorts. It is computed here using three year calendar blocks (2004-2006: 0-1 year survival), (2003-2005: 1-2 year survival), (2002-2004: 2-3 year survival), (2001-2003: 3-4 year survival), (2000-2002: 4-5 years survival).

<sup>d</sup> The difference between 1975-1977 and 1999-2006 is statistically significant (p<.05).

<sup>e</sup> The standard error is between 5 and 10 percentage points.

The standard error is greater than 10 percentage points.

- Statistic could not be calculated due to fewer than 25 cases during the time period.



Table 14.8  
Cancer of the Liver and Intrahepatic Bile Duct (Invasive)

5-Year Relative and Period Survival (Percent) by Race, Sex, Diagnosis Year, Stage and Age

	All Races			Whites			Blacks		
	Total	Males	Females	Total	Males	Females	Total	Males	Females
5-Year Relative Survival (Percent)									
Year of Diagnosis:									
1960-1963 <sup>a</sup>	-	-	-	-	-	-	-	-	-
1970-1973 <sup>a</sup>	-	-	-	-	-	-	-	-	-
1975-1977 <sup>b</sup>	3.7	2.0	6.7	3.7	2.1	6.1	1.9	0.0	5.9
1978-1980 <sup>b</sup>	3.6	2.3	5.8	3.5	2.3	5.2	3.8	3.2	5.1
1981-1983 <sup>b</sup>	4.0	3.3	5.3	4.3	3.5	5.5	3.0	2.1	4.9
1984-1986 <sup>b</sup>	6.1	3.8	10.2	6.1	3.9	10.0	4.5	2.2	9.5
1987-1989 <sup>b</sup>	5.1	3.3	8.7	6.1	3.6	10.2	2.9	1.6	5.1
1990-1992 <sup>b</sup>	5.9	5.1	7.5	6.8	5.6	8.9	2.7	2.0	3.7
1993-1995 <sup>b</sup>	5.9	5.5	6.7	5.6	5.2	6.4	4.2	2.8	7.8
1996-1998 <sup>b</sup>	8.8	8.4	9.8	8.8	7.7	11.1	4.6	5.8	2.2
1999-2006 <sup>b</sup>	14.4 <sup>e</sup>	14.3 <sup>e</sup>	14.6 <sup>e</sup>	13.7 <sup>e</sup>	13.7 <sup>e</sup>	13.8 <sup>e</sup>	9.5 <sup>e</sup>	8.0	13.6 <sup>e</sup>
5-Year Period Survival (Percent) <sup>cd</sup>									
Year of Diagnosis:									
1999-2006	15.4	15.1	16.1	15.1	14.9	15.4	9.9	8.7	12.9
Stage Distribution (%) 1999-2006 <sup>c</sup>									
All Stages									
Number of cases	29,844	20,999	8,845	20,212	14,190	6,022	3,311	2,403	908
Percent	100%	100%	100%	100%	100%	100%	100%	100%	100%
Localized	37	37	38	37	37	36	35	35	38
Regional	26	27	24	25	26	23	27	28	26
Distant	19	19	19	19	19	19	22	23	20
Unstaged	18	17	20	19	18	22	15	14	16
5-Year Relative Survival (Percent), 1999-2006 <sup>c</sup>									
Age at Diagnosis:									
Ages <45	27.7	25.4	33.8	30.8	27.8	37.5	16.1	14.8	19.3 <sup>f</sup>
Ages 45-54	17.7	16.9	21.5	18.4	17.6	21.9	10.7	9.4	16.4
Ages 55-64	15.1	14.1	18.3	15.0	14.0	18.6	8.1	6.6	12.8
Ages 65-74	10.8	10.2	11.9	8.8	8.4	9.6	8.8	7.2	10.9
Ages 75+	5.1	5.2	4.8	4.3	4.5	4.1	3.3	2.7	3.3
Ages <65	17.9	16.7	22.2	18.5	17.2	23.3	10.4	9.0	15.3
Ages 65+	8.3	8.3	8.3	6.8	6.9	6.7	7.2	6.5	7.9
Stage:									
All Stages	13.8	13.6	14.2	13.3	13.2	13.5	9.5	8.4	12.2
Localized	26.4	26.5	26.3	26.1	26.3	25.6	18.8	17.6	21.8
Regional	9.0	8.9	9.3	8.6	8.5	8.9	5.7	5.0	7.3
Distant	2.5	2.1	3.4	2.5	1.9	4.0	2.1	2.0	2.6
Unstaged	6.1	5.9	6.7	5.3	5.0	5.8	5.5	3.8	9.6

<sup>a</sup> Based on End Results data from a series of hospital registries and one population-based registry.

<sup>b</sup> Based on the SEER 9 areas (San Francisco, Connecticut, Detroit, Hawaii, Iowa, New Mexico, Seattle, Utah, Atlanta).

Based on follow-up of patients into 2007.

<sup>c</sup> Based on the SEER 17 areas (San Francisco, Connecticut, Detroit, Hawaii, Iowa, New Mexico, Seattle, Utah, Atlanta, San Jose-Monterey, Los Angeles, Alaska Native Registry, Rural Georgia, California excluding SF/SJM/LA, Kentucky, Louisiana and New Jersey). California excluding SF/SJM/LA, Kentucky, Louisiana, and New Jersey contribute cases for diagnosis years 2000-2006.

The remaining 13 SEER Areas contribute cases for the entire period 1999-2006. Based on follow-up of patients into 2007.

<sup>d</sup> Period survival provides a more up-to-date estimate of survival by piecing together the most recent conditional survival estimates from several cohorts. It is computed here using three year calendar blocks (2004-2006: 0-1 year survival),

(2003-2005: 1-2 year survival), (2002-2004: 2-3 year survival), (2001-2003: 3-4 year survival), (2000-2002: 4-5 years survival).

<sup>e</sup> The difference between 1975-1977 and 1999-2006 is statistically significant ( $p < .05$ ).

<sup>f</sup> The standard error is between 5 and 10 percentage points.

<sup>g</sup> The standard error is greater than 10 percentage points.

- Statistic could not be calculated due to fewer than 25 cases during the time period.

Table 15.12  
Cancer of the Lung and Bronchus (Invasive)

5-Year Relative and Period Survival (Percent) by Race, Sex, Diagnosis Year, Stage and Age

	All Races			Whites			Blacks		
	Total	Males	Females	Total	Males	Females	Total	Males	Females
5-Year Relative Survival (Percent)									
Year of Diagnosis:									
1960-1963 <sup>a</sup>	-	-	-	8	7	11	5	5	6
1970-1973 <sup>a</sup>	-	-	-	10	9	14	7	6	10
1975-1977 <sup>b</sup>	12.7	11.5	15.9	12.8	11.5	16.0	11.6	10.8	14.1
1978-1980 <sup>b</sup>	13.3	11.8	16.7	13.4	11.9	16.6	12.0	9.9	18.1
1981-1983 <sup>b</sup>	13.7	12.0	16.9	13.9	12.2	17.0	11.7	10.5	15.1
1984-1986 <sup>b</sup>	13.3	11.6	16.4	13.6	11.7	16.8	11.4	10.7	13.0
1987-1989 <sup>b</sup>	13.5	12.4	15.4	13.8	12.5	15.8	11.2	11.0	11.5
1990-1992 <sup>b</sup>	14.0	12.5	16.3	14.4	12.9	16.6	10.7	9.5	12.9
1993-1995 <sup>b</sup>	14.9	13.0	17.4	15.1	13.1	17.7	13.2	11.6	15.8
1996-1998 <sup>b</sup>	15.2	13.4	17.4	15.5	13.6	17.7	12.7	11.1	15.2
1999-2006 <sup>b</sup>	16.4 <sup>e</sup>	14.2 <sup>e</sup>	19.0 <sup>e</sup>	16.8 <sup>e</sup>	14.5 <sup>e</sup>	19.4 <sup>e</sup>	13.2 <sup>e</sup>	11.8 <sup>e</sup>	15.0
5-Year Period Survival (Percent) <sup>cd</sup>									
Year of Diagnosis:									
1999-2006	16.4	14.0	19.0	16.7	14.2	19.4	12.9	11.7	14.4
Stage Distribution (%) 1999-2006 <sup>c</sup>									
All Stages									
Number of cases	263,175	142,448	120,727	219,592	116,915	102,677	27,263	15,802	11,461
Percent	100%	100%	100%	100%	100%	100%	100%	100%	100%
Localized	15	13	16	15	14	17	12	11	14
Regional	22	22	22	22	22	22	22	23	22
Distant	56	57	54	55	56	53	60	60	58
Unstaged	8	7	8	8	7	8	6	6	6
5-Year Relative Survival (Percent), 1999-2006 <sup>c</sup>									
Age at Diagnosis:									
Ages <45	24.5	22.8	26.2	26.4	24.8	27.9	17.2	15.4	19.1
Ages 45-54	18.8	15.1	23.5	19.7	15.6	24.7	14.0	12.1	16.8
Ages 55-64	17.8	15.1	21.3	18.3	15.5	21.9	13.9	12.3	16.5
Ages 65-74	15.7	13.4	18.4	15.9	13.5	18.7	11.9	10.8	13.5
Ages 75+	11.3	9.8	12.7	11.6	10.1	12.9	8.6	7.9	9.3
Ages <65	18.6	15.6	22.4	19.3	16.1	23.1	14.2	12.4	16.9
Ages 65+	13.8	12.0	15.8	14.0	12.1	16.0	10.7	9.8	11.8
Stage:									
All Stages	15.8	13.5	18.3	16.1	13.8	18.6	12.6	11.3	14.4
Localized	52.9	48.1	57.4	53.5	48.8	57.8	45.1	41.6	49.0
Regional	24.0	21.8	26.6	24.1	21.8	26.7	20.9	19.9	22.3
Distant	3.5	3.0	4.2	3.5	2.9	4.2	3.1	2.8	3.4
Unstaged	8.7	7.6	9.9	8.4	7.2	9.5	10.6	9.8	11.7

<sup>a</sup> Based on End Results data from a series of hospital registries and one population-based registry.  
<sup>b</sup> Based on the SEER 9 areas (San Francisco, Connecticut, Detroit, Hawaii, Iowa, New Mexico, Seattle, Utah, Atlanta).  
Based on follow-up of patients into 2007.  
<sup>c</sup> Based on the SEER 17 areas (San Francisco, Connecticut, Detroit, Hawaii, Iowa, New Mexico, Seattle, Utah, Atlanta, San Jose-Monterey, Los Angeles, Alaska Native Registry, Rural Georgia, California excluding SF/SJM/LA, Kentucky, Louisiana and New Jersey). California excluding SF/SJM/LA, Kentucky, Louisiana, and New Jersey contribute cases for diagnosis years 2000-2006. The remaining 13 SEER Areas contribute cases for the entire period 1999-2006. Based on follow-up of patients into 2007.  
<sup>d</sup> Period survival provides a more up-to-date estimate of survival by piecing together the most recent conditional survival estimates from several cohorts. It is computed here using three year calendar blocks (2004-2006: 0-1 year survival), (2003-2005: 1-2 year survival), (2002-2004: 2-3 year survival), (2001-2003: 3-4 year survival), (2000-2002: 4-5 years survival).  
<sup>e</sup> The difference between 1975-1977 and 1999-2006 is statistically significant (p<.05).  
<sup>f</sup> The standard error is between 5 and 10 percentage points.  
<sup>g</sup> The standard error is greater than 10 percentage points.  
- Statistic could not be calculated due to fewer than 25 cases during the time period.

Table 15.13  
Small Cell Cancer of the Lung and Bronchus (Invasive)

5-Year Relative and Period Survival (Percent) by Race, Sex, Diagnosis Year, Stage and Age

	All Races			Whites			Blacks		
	Total	Males	Females	Total	Males	Females	Total	Males	Females
5-Year Relative Survival (Percent)									
Year of Diagnosis:									
1975-1977 <sup>a</sup>	3.7	3.2	4.8	3.7	3.1	4.9	3.8	3.9	3.6
1978-1980 <sup>a</sup>	4.4	3.3	6.6	4.5	3.4	6.6	3.2	2.4	5.0
1981-1983 <sup>a</sup>	4.8	3.7	6.4	4.8	3.8	6.2	5.6	4.3	8.5
1984-1986 <sup>a</sup>	4.7	3.6	6.5	4.9	3.7	6.7	3.6	2.3	5.6
1987-1989 <sup>a</sup>	5.2	4.0	6.7	5.3	4.0	6.9	3.9	3.4	4.7
1990-1992 <sup>a</sup>	5.6	4.7	6.6	5.7	4.7	6.8	4.0	3.9	3.9
1993-1995 <sup>a</sup>	6.6	5.4	8.0	6.5	5.3	7.8	6.9	4.6	9.9
1996-1998 <sup>b</sup>	6.2	5.4	7.0	6.4	5.6	7.2	3.9	2.7	5.2
1999-2006 <sup>a</sup>	6.3 <sup>d</sup>	5.1 <sup>d</sup>	7.5 <sup>d</sup>	6.3 <sup>d</sup>	4.7 <sup>d</sup>	7.8 <sup>d</sup>	5.3	5.7 <sup>d</sup>	4.7
5-Year Period Survival (Percent) <sup>bc</sup>									
Year of Diagnosis:									
1999-2006	6.4	5.2	7.6	6.4	5.1	7.7	5.4	5.3	5.6
Stage Distribution (%) 1999-2006 <sup>b</sup>									
All Stages									
Number of cases	35,769	18,256	17,513	31,466	15,795	15,671	2,827	1,505	1,322
Percent	100%	100%	100%	100%	100%	100%	100%	100%	100%
Localized	5	5	5	5	5	5	5	4	6
Regional	21	19	22	21	19	22	22	21	23
Distant	69	71	67	69	72	67	69	70	67
Unstaged	5	5	5	5	5	5	4	4	4
5-Year Relative Survival (Percent), 1999-2006 <sup>b</sup>									
Age at Diagnosis:									
Ages <45	10.3	9.6	11.0	10.6	9.7	11.6	7.4	9.2 <sup>e</sup>	-
Ages 45-54	9.0	6.7	11.6	9.3	7.0	11.8	6.4	3.6	9.7
Ages 55-64	7.3	5.7	9.2	7.4	5.4	9.4	6.4	7.1	5.4
Ages 65-74	5.4	4.9	5.9	5.3	4.5	6.0	3.5	4.6	2.5
Ages 75+	3.3	2.8	3.6	3.4	3.1	3.6	-	0.0	-
Ages <65	7.9	6.2	9.9	8.0	6.1	10.2	6.5	6.2	6.8
Ages 65+	4.6	4.1	5.0	4.6	4.0	5.1	2.8	3.3	2.4
Stage:									
All Stages	6.1	5.1	7.1	6.1	5.0	7.2	4.8	5.0	4.7
Localized	21.0	19.4	22.0	21.0	19.1	22.3	14.6	17.0 <sup>e</sup>	12.6
Regional	13.3	12.0	14.4	13.4	12.0	14.6	11.2	11.5	10.8
Distant	2.7	2.2	3.1	2.7	2.1	3.3	1.9	2.1	1.6
Unstaged	8.2	6.0	10.2	8.2	5.8	10.1	7.9	5.8	9.0

<sup>a</sup> Based on the SEER 9 areas (San Francisco, Connecticut, Detroit, Hawaii, Iowa, New Mexico, Seattle, Utah, Atlanta).

Based on follow-up of patients into 2007.

<sup>b</sup> Based on the SEER 17 areas (San Francisco, Connecticut, Detroit, Hawaii, Iowa, New Mexico, Seattle, Utah, Atlanta, San Jose-Monterey, Los Angeles, Alaska Native Registry, Rural Georgia, California excluding SF/SJM/LA, Kentucky, Louisiana and New Jersey). California excluding SF/SJM/LA, Kentucky, Louisiana, and New Jersey contribute cases for diagnosis years 2000-2006. The remaining 13 SEER Areas contribute cases for the entire period 1999-2006. Based on follow-up of patients into 2007.

<sup>c</sup> Period survival provides a more up-to-date estimate of survival by piecing together the most recent conditional survival estimates from several cohorts. It is computed here using three year calendar blocks (2004-2006: 0-1 year survival),

(2003-2005: 1-2 year survival), (2002-2004: 2-3 year survival), (2001-2003: 3-4 year survival), (2000-2002: 4-5 years survival).

<sup>d</sup> The difference between 1975-1977 and 1999-2006 is statistically significant ( $p < .05$ ).

<sup>e</sup> The standard error is between 5 and 10 percentage points.

<sup>f</sup> The standard error is greater than 10 percentage points.

- Statistic could not be calculated due to fewer than 25 cases during the time period.

Table 15.14  
Non-Small Cell Cancer of the Lung and Bronchus (Invasive)

5-Year Relative and Period Survival (Percent) by Race, Sex, Diagnosis Year, Stage and Age

	All Races			Whites			Blacks		
	Total	Males	Females	Total	Males	Females	Total	Males	Females
5-Year Relative Survival (Percent)									
Year of Diagnosis:									
1975-1977 <sup>a</sup>	14.2	12.8	18.0	14.4	12.9	18.1	12.6	11.5	16.3
1978-1980 <sup>a</sup>	15.0	13.4	18.8	15.2	13.6	18.9	13.2	10.9	20.0
1981-1983 <sup>a</sup>	15.5	13.6	19.5	15.9	13.9	19.9	12.6	11.3	16.1
1984-1986 <sup>a</sup>	15.2	13.2	18.8	15.5	13.4	19.3	12.6	11.8	14.6
1987-1989 <sup>a</sup>	15.3	14.0	17.6	15.7	14.2	18.2	12.3	12.0	12.7
1990-1992 <sup>a</sup>	15.8	13.9	18.6	16.3	14.5	19.0	11.6	10.1	14.4
1993-1995 <sup>a</sup>	16.5	14.3	19.5	16.9	14.6	20.0	14.0	12.4	16.8
1996-1998 <sup>b</sup>	16.9	14.8	19.5	17.2	15.0	19.9	13.8	11.9	16.8
1999-2006 <sup>a</sup>	18.2 <sup>d</sup>	15.6 <sup>d</sup>	21.2 <sup>d</sup>	18.8 <sup>d</sup>	16.1 <sup>d</sup>	21.7 <sup>d</sup>	14.1 <sup>d</sup>	12.4	16.4
5-Year Period Survival (Percent) <sup>bc</sup>									
Year of Diagnosis:									
1999-2006	18.1	15.4	21.1	18.5	15.7	21.6	13.8	12.4	15.6
Stage Distribution (%) 1999-2006 <sup>b</sup>									
All Stages									
Number of cases	227,406	124,192	103,214	188,126	101,120	87,006	24,436	14,297	10,139
Percent	100%	100%	100%	100%	100%	100%	100%	100%	100%
Localized	16	15	18	17	15	19	13	12	15
Regional	22	23	22	22	23	22	22	23	22
Distant	54	55	52	52	54	51	59	60	57
Unstaged	8	8	8	8	8	9	6	6	6
5-Year Relative Survival (Percent), 1999-2006 <sup>b</sup>									
Age at Diagnosis:									
Ages <45	26.2	24.3	28.1	28.6	26.9	30.2	17.8	15.8	20.0
Ages 45-54	20.5	16.5	25.6	21.8	17.2	27.3	14.9	12.9	17.7
Ages 55-64	19.9	16.9	24.1	20.7	17.5	24.9	14.9	12.9	18.2
Ages 65-74	17.5	14.7	21.0	17.9	15.0	21.3	13.0	11.4	15.1
Ages 75+	12.3	10.7	13.8	12.7	11.0	14.2	9.3	8.5	10.1
Ages <65	20.6	17.3	24.9	21.6	18.0	26.0	15.1	13.1	18.2
Ages 65+	15.2	13.1	17.6	15.5	13.3	17.9	11.6	10.4	13.0
Stage:									
All Stages	17.4	14.8	20.3	17.8	15.2	20.8	13.5	12.0	15.7
Localized	54.5	49.5	59.2	55.2	50.2	59.7	46.6	42.5	50.9
Regional	25.7	23.1	28.9	25.9	23.2	29.1	22.0	20.7	23.9
Distant	3.7	3.1	4.5	3.6	3.0	4.4	3.3	2.9	3.7
Unstaged	8.8	7.8	9.8	8.4	7.3	9.5	10.8	10.1	11.8

<sup>a</sup> Based on the SEER 9 areas (San Francisco, Connecticut, Detroit, Hawaii, Iowa, New Mexico, Seattle, Utah, Atlanta).  
Based on follow-up of patients into 2007.

<sup>b</sup> Based on the SEER 17 areas (San Francisco, Connecticut, Detroit, Hawaii, Iowa, New Mexico, Seattle, Utah, Atlanta, San Jose-Monterey, Los Angeles, Alaska Native Registry, Rural Georgia, California excluding SF/SJM/LA, Kentucky, Louisiana and New Jersey). California excluding SF/SJM/LA, Kentucky, Louisiana, and New Jersey contribute cases for diagnosis years 2000-2006. The remaining 13 SEER Areas contribute cases for the entire period 1999-2006. Based on follow-up of patients into 2007.

<sup>c</sup> Period survival provides a more up-to-date estimate of survival by piecing together the most recent conditional survival estimates from several cohorts. It is computed here using three year calendar blocks (2004-2006: 0-1 year survival), (2003-2005: 1-2 year survival), (2002-2004: 2-3 year survival), (2001-2003: 3-4 year survival), (2000-2002: 4-5 years survival).

<sup>d</sup> The difference between 1975-1977 and 1999-2006 is statistically significant ( $p < .05$ ).

<sup>e</sup> The standard error is between 5 and 10 percentage points.

<sup>f</sup> The standard error is greater than 10 percentage points.

- Statistic could not be calculated due to fewer than 25 cases during the time period.

Table 16.8  
Melanoma of the Skin (Invasive)

5-Year Relative and Period Survival (Percent) by Race, Sex, Diagnosis Year, Stage and Age

	All Races			Whites			Blacks		
	Total	Males	Females	Total	Males	Females	Total	Males	Females
5-Year Relative Survival (Percent)									
Year of Diagnosis:									
1960-1963 <sup>a</sup>	-	-	-	60	51	68	-	-	-
1970-1973 <sup>a</sup>	-	-	-	68	62	75	-	-	-
1975-1977 <sup>b</sup>	82.6	78.1	86.9	82.5	78.1	86.9	59.9 <sup>f</sup>	-	-
1978-1980 <sup>b</sup>	83.2	78.1	88.1	83.2	78.1	88.2	59.7 <sup>g</sup>	-	-
1981-1983 <sup>b</sup>	83.3	78.8	87.8	83.2	78.8	87.7	60.7 <sup>f</sup>	-	-
1984-1986 <sup>b</sup>	87.0	82.8	91.3	86.7	82.4	91.2	69.8 <sup>g</sup>	-	-
1987-1989 <sup>b</sup>	88.5	85.4	91.8	88.3	85.3	91.5	79.3 <sup>f</sup>	-	89.5 <sup>f</sup>
1990-1992 <sup>b</sup>	89.5	87.1	92.1	89.5	87.2	92.1	60.1 <sup>f</sup>	-	-
1993-1995 <sup>b</sup>	90.0	87.5	92.9	89.8	87.2	92.9	67.5 <sup>f</sup>	63.5 <sup>f</sup>	-
1996-1998 <sup>b</sup>	91.4	89.9	93.2	91.3	89.6	93.3	75.0 <sup>f</sup>	70.1 <sup>g</sup>	78.5 <sup>f</sup>
1999-2006 <sup>b</sup>	93.0 <sup>e</sup>	91.1 <sup>e</sup>	95.1 <sup>e</sup>	92.9 <sup>e</sup>	91.0 <sup>e</sup>	95.1 <sup>e</sup>	74.1 <sup>f</sup>	73.7 <sup>f</sup>	73.6 <sup>f</sup>
5-Year Period Survival (Percent) <sup>cd</sup>									
Year of Diagnosis:									
1999-2006	91.2	89.2	93.5	90.9	88.8	93.4	79.9	72.5	84.8
Stage Distribution (%) 1999-2006 <sup>c</sup>									
All Stages									
Number of cases	84,118	46,408	37,710	79,453	44,075	35,378	389	167	222
Percent	100%	100%	100%	100%	100%	100%	100%	100%	100%
Localized	84	82	86	84	82	86	58	51	64
Regional	8	9	7	9	9	7	21	21	21
Distant	4	4	3	4	5	3	13	19	8
Unstaged	4	4	4	4	4	4	8	8	7
5-Year Relative Survival (Percent), 1999-2006 <sup>c</sup>									
Age at Diagnosis:									
Ages <45	94.2	91.2	96.4	94.1	91.0	96.3	74.8	67.5 <sup>f</sup>	78.8 <sup>f</sup>
Ages 45-54	91.9	89.6	94.8	91.6	89.2	94.6	83.8 <sup>f</sup>	-	80.0 <sup>g</sup>
Ages 55-64	91.6	89.9	94.4	91.3	89.6	94.2	81.9 <sup>f</sup>	75.6 <sup>f</sup>	88.0 <sup>f</sup>
Ages 65-74	89.6	88.4	91.6	89.5	88.4	91.3	68.3 <sup>f</sup>	58.5 <sup>g</sup>	76.8 <sup>g</sup>
Ages 75+	84.9	83.9	86.0	84.7	83.8	85.8	57.1 <sup>f</sup>	51.3 <sup>g</sup>	56.8 <sup>g</sup>
Ages <65	92.8	90.3	95.5	92.5	90.0	95.3	78.6	75.0 <sup>f</sup>	81.2
Ages 65+	87.8	86.9	89.0	87.7	86.9	88.8	64.0 <sup>f</sup>	57.5 <sup>f</sup>	67.2 <sup>f</sup>
Stage:									
All Stages	91.4	89.3	93.9	91.1	89.0	93.7	74.6	70.0	77.9
Localized	98.0	97.3	98.7	97.8	97.2	98.5	92.9	89.0 <sup>f</sup>	94.8
Regional	62.1	58.5	67.5	62.5	58.7	68.2	44.7 <sup>f</sup>	55.3 <sup>g</sup>	33.1 <sup>g</sup>
Distant	15.9	14.9	18.0	15.4	14.7	17.1	32.7 <sup>f</sup>	31.0 <sup>f</sup>	-
Unstaged	76.0	73.2	79.7	74.8	72.0	78.5	68.4 <sup>g</sup>	-	-

<sup>a</sup> Based on End Results data from a series of hospital registries and one population-based registry.

<sup>b</sup> Based on the SEER 9 areas (San Francisco, Connecticut, Detroit, Hawaii, Iowa, New Mexico, Seattle, Utah, Atlanta).

Based on follow-up of patients into 2007.

<sup>c</sup> Based on the SEER 17 areas (San Francisco, Connecticut, Detroit, Hawaii, Iowa, New Mexico, Seattle, Utah, Atlanta, San Jose-Monterey, Los Angeles, Alaska Native Registry, Rural Georgia, California excluding SF/SJM/LA, Kentucky, Louisiana and New Jersey). California excluding SF/SJM/LA, Kentucky, Louisiana, and New Jersey contribute cases for diagnosis years 2000-2006. The remaining 13 SEER Areas contribute cases for the entire period 1999-2006. Based on follow-up of patients into 2007.

<sup>d</sup> Period survival provides a more up-to-date estimate of survival by piecing together the most recent conditional survival estimates from several cohorts. It is computed here using three year calendar blocks (2004-2006: 0-1 year survival),

(2003-2005: 1-2 year survival), (2002-2004: 2-3 year survival), (2001-2003: 3-4 year survival), (2000-2002: 4-5 years survival).

<sup>e</sup> The difference between 1975-1977 and 1999-2006 is statistically significant ( $p < .05$ ).

<sup>f</sup> The standard error is between 5 and 10 percentage points.

<sup>g</sup> The standard error is greater than 10 percentage points.

- Statistic could not be calculated due to fewer than 25 cases during the time period.

Table 17.4  
Mesothelioma

5-Year Relative and Period Survival (Percent) by Race, Sex, Diagnosis Year, Stage and Age

	All Races			Whites			Blacks		
	Total	Males	Females	Total	Males	Females	Total	Males	Females
5-Year Relative Survival (Percent)									
Year of Diagnosis:									
1960-1963 <sup>a</sup>	-	-	-	-	-	-	-	-	-
1970-1973 <sup>a</sup>	-	-	-	-	-	-	-	-	-
1975-1977 <sup>b</sup>	10.4	3.2	28.0 <sup>f</sup>	11.2	3.6	28.6 <sup>f</sup>	-	-	-
1978-1980 <sup>b</sup>	6.3	5.8	8.3	6.1	5.4	8.9	-	-	-
1981-1983 <sup>b</sup>	8.2	5.7	15.6	8.6	5.8	16.7	-	-	-
1984-1986 <sup>b</sup>	7.1	4.7	14.7	6.6	4.0	14.9	-	-	-
1987-1989 <sup>b</sup>	6.6	4.8	13.0	6.7	4.9	13.1	4.5	-	-
1990-1992 <sup>b</sup>	8.5	4.6	21.9	8.1	4.3	21.3	12.8 <sup>f</sup>	12.0 <sup>f</sup>	-
1993-1995 <sup>b</sup>	7.1	3.5	19.6	6.4	3.0	18.9	9.6 <sup>f</sup>	8.4 <sup>f</sup>	-
1996-1998 <sup>b</sup>	10.5	8.8	16.3	10.8	8.9	17.4	11.6 <sup>f</sup>	-	-
1999-2006 <sup>b</sup>	7.7	5.6 <sup>e</sup>	14.5	7.1	5.1 <sup>e</sup>	13.9	15.1 <sup>f</sup>	15.4 <sup>f</sup>	-
5-Year Period Survival (Percent) <sup>cd</sup>									
Year of Diagnosis:									
1999-2006	7.8	5.9	13.8	7.2	5.3	13.6	11.9	14.2	-
5-Year Relative Survival (Percent), 1999-2006 <sup>c</sup>									
Age at Diagnosis:									
Ages <45	39.7	34.2 <sup>f</sup>	46.0 <sup>f</sup>	36.1	33.3 <sup>f</sup>	39.6 <sup>f</sup>	-	-	-
Ages 45-54	15.7	11.1	22.7	14.8	10.3	21.7	29.7 <sup>f</sup>	-	-
Ages 55-64	7.5	5.5	15.3	7.4	4.8	18.1	3.5	5.4 <sup>f</sup>	-
Ages 65-74	6.0	6.0	6.4	5.9	5.9	6.1	5.1	5.1	-
Ages 75+	2.7	2.0	5.9	2.8	1.9	6.2	0.0	0.0	-
Ages <65	13.3	9.2	23.4	12.4	8.5	22.7	17.7	13.0 <sup>f</sup>	24.7 <sup>f</sup>
Ages 65+	4.2	3.8	6.1	4.2	3.7	6.2	3.4	4.1	0.0

<sup>a</sup> Based on End Results data from a series of hospital registries and one population-based registry.<sup>b</sup> Based on the SEER 9 areas (San Francisco, Connecticut, Detroit, Hawaii, Iowa, New Mexico, Seattle, Utah, Atlanta).

Based on follow-up of patients into 2007.

<sup>c</sup> Based on the SEER 17 areas (San Francisco, Connecticut, Detroit, Hawaii, Iowa, New Mexico, Seattle, Utah, Atlanta, San Jose-Monterey, Los Angeles, Alaska Native Registry, Rural Georgia, California excluding SF/SJM/LA, Kentucky, Louisiana and New Jersey). California excluding SF/SJM/LA, Kentucky, Louisiana, and New Jersey contribute cases for diagnosis years 2000-2006.<sup>d</sup> The remaining 13 SEER Areas contribute cases for the entire period 1999-2006. Based on follow-up of patients into 2007.

Period survival provides a more up-to-date estimate of survival by piecing together the most recent conditional survival estimates from several cohorts. It is computed here using three year calendar blocks (2004-2006: 0-1 year survival),

(2003-2005: 1-2 year survival), (2002-2004: 2-3 year survival), (2001-2003: 3-4 year survival), (2000-2002: 4-5 years survival).

<sup>e</sup> The difference between 1975-1977 and 1999-2006 is statistically significant (p<.05).<sup>f</sup> The standard error is between 5 and 10 percentage points.<sup>g</sup> The standard error is greater than 10 percentage points.

- Statistic could not be calculated due to fewer than 25 cases during the time period.

Table 18.8  
Myeloma

## 5-Year Relative and Period Survival (Percent) by Race, Sex, Diagnosis Year and Age

	All Races			Whites			Blacks		
	Total	Males	Females	Total	Males	Females	Total	Males	Females
5-Year Relative Survival (Percent)									
Year of Diagnosis:									
1960-1963 <sup>a</sup>	-	-	-	12	13	10	-	-	-
1970-1973 <sup>a</sup>	-	-	-	19	20	17	-	-	-
1975-1977 <sup>b</sup>	26.0	25.7	26.4	25.5	25.2	25.8	30.8	31.7	29.8
1978-1980 <sup>b</sup>	26.9	25.4	28.5	25.9	25.4	26.5	32.4	26.9	37.9
1981-1983 <sup>b</sup>	28.6	26.7	30.5	28.4	26.6	30.1	29.5	30.3	28.7
1984-1986 <sup>b</sup>	28.6	29.2	28.0	27.4	27.4	27.5	32.4	34.0	30.7
1987-1989 <sup>b</sup>	28.5	30.2	26.8	28.1	30.4	25.9	31.2	31.0	31.3
1990-1992 <sup>b</sup>	30.5	31.7	29.2	29.7	30.7	28.5	35.5	39.8	31.4
1993-1995 <sup>b</sup>	33.1	33.8	32.4	32.2	33.1	31.2	36.1	35.2	36.4
1996-1998 <sup>b</sup>	33.7	35.9	31.3	33.6	36.0	30.8	32.0	33.4	31.0
1999-2006 <sup>b</sup>	38.5 <sup>e</sup>	40.3 <sup>e</sup>	36.3 <sup>e</sup>	38.8 <sup>e</sup>	40.9 <sup>e</sup>	36.1 <sup>e</sup>	37.6 <sup>e</sup>	39.2	36.0
5-Year Period Survival (Percent) <sup>cd</sup>									
Year of Diagnosis:									
1999-2006	40.1	41.4	38.6	40.1	41.6	38.3	39.5	39.3	39.6
Stage Distribution (%) 1999-2006 <sup>c</sup>									
All Stages									
Number of cases	25,390	13,587	11,803	19,273	10,587	8,686	4,398	2,127	2,271
Percent	100%	100%	100%	100%	100%	100%	100%	100%	100%
Localized	5	6	4	5	6	4	3	4	3
Regional	0	0	0	0	0	0	0	0	0
Distant	95	94	96	95	94	96	97	96	97
Unstaged	0	0	0	0	0	0	0	0	0
5-Year Relative Survival (Percent), 1999-2006 <sup>c</sup>									
Age at Diagnosis:									
Ages <45	60.8	62.4	58.4	61.4	64.3	55.9	58.5	56.7 <sup>f</sup>	60.4
Ages 45-54	54.5	53.9	55.1	57.4	57.0	58.0	46.7	42.7	50.9
Ages 55-64	45.9	45.9	45.9	46.6	46.2	47.3	42.1	42.4	41.6
Ages 65-74	34.3	33.5	35.3	34.2	33.5	34.9	32.9	31.9	33.8
Ages 75+	21.3	21.5	21.2	20.9	21.3	20.6	21.8	22.0	21.7
Ages <65	50.6	50.7	50.5	51.9	51.9	51.8	46.3	44.6	47.9
Ages 65+	28.1	28.4	27.8	27.6	28.2	27.0	28.1	28.3	28.0
Stage:									
All Stages	38.2	39.3	36.9	38.0	39.4	36.2	37.9	37.7	38.0
Localized	70.6	76.9	59.2	70.9	77.2	58.4	61.9 <sup>f</sup>	69.7 <sup>f</sup>	52.4 <sup>f</sup>
Regional	-	-	-	-	-	-	-	-	-
Distant	36.4	36.8	36.0	36.1	36.7	35.3	37.0	36.3	37.5
Unstaged	-	-	-	-	-	-	-	-	-

<sup>a</sup> Based on End Results data from a series of hospital registries and one population-based registry.

<sup>b</sup> Based on the SEER 9 areas (San Francisco, Connecticut, Detroit, Hawaii, Iowa, New Mexico, Seattle, Utah, Atlanta).

Based on follow-up of patients into 2007.

<sup>c</sup> Based on the SEER 17 areas (San Francisco, Connecticut, Detroit, Hawaii, Iowa, New Mexico, Seattle, Utah, Atlanta, San Jose-Monterey, Los Angeles, Alaska Native Registry, Rural Georgia, California excluding SF/SJM/LA, Kentucky, Louisiana and New Jersey). California excluding SF/SJM/LA, Kentucky, Louisiana, and New Jersey contribute cases for diagnosis years 2000-2006. The remaining 13 SEER Areas contribute cases for the entire period 1999-2006. Based on follow-up of patients into 2007.

<sup>d</sup> Period survival provides a more up-to-date estimate of survival by piecing together the most recent conditional survival estimates from several cohorts. It is computed here using three year calendar blocks (2004-2006: 0-1 year survival),

(2003-2005: 1-2 year survival), (2002-2004: 2-3 year survival), (2001-2003: 3-4 year survival), (2000-2002: 4-5 years survival).

<sup>e</sup> The difference between 1975-1977 and 1999-2006 is statistically significant ( $p < .05$ ).

<sup>f</sup> The standard error is between 5 and 10 percentage points.

<sup>g</sup> The standard error is greater than 10 percentage points.

- Statistic could not be calculated due to fewer than 25 cases during the time period.

Table 19.8  
Non-Hodgkin Lymphoma

5-Year Relative and Period Survival (Percent) by Race, Sex, Diagnosis Year and Age

	All Races			Whites			Blacks		
	Total	Males	Females	Total	Males	Females	Total	Males	Females
5-Year Relative Survival (Percent)									
Year of Diagnosis:									
1960-1963 <sup>a</sup>	-	-	-	31	31	31	-	-	-
1970-1973 <sup>a</sup>	-	-	-	41	39	43	-	-	-
1975-1977 <sup>b</sup>	48.1	47.0	49.2	48.5	47.9	49.1	49.1	42.7	56.3 <sup>f</sup>
1978-1980 <sup>b</sup>	49.8	47.8	51.9	49.9	48.1	51.7	52.3	48.0	58.1
1981-1983 <sup>b</sup>	52.4	52.1	52.8	52.7	52.4	53.0	50.6	49.8	51.5
1984-1986 <sup>b</sup>	53.4	51.5	55.4	53.8	52.1	55.7	47.7	44.9	51.3
1987-1989 <sup>b</sup>	52.3	48.6	56.9	52.8	49.1	57.3	47.4	42.4	53.5
1990-1992 <sup>b</sup>	51.8	47.2	57.8	52.9	48.2	58.7	42.0	37.8	47.7
1993-1995 <sup>b</sup>	53.8	49.5	59.4	54.6	50.6	59.8	42.1	35.4	54.9
1996-1998 <sup>b</sup>	60.4	58.2	63.1	61.2	59.0	63.9	54.5	52.4	57.5
1999-2006 <sup>b</sup>	69.1 <sup>e</sup>	67.1 <sup>e</sup>	71.4 <sup>e</sup>	70.5 <sup>e</sup>	68.9 <sup>e</sup>	72.3 <sup>e</sup>	60.0 <sup>e</sup>	54.5	66.4
5-Year Period Survival (Percent) <sup>cd</sup>									
Year of Diagnosis:									
1999-2006	69.2	67.7	70.9	70.1	68.9	71.4	59.9	55.1	65.7
Stage Distribution (%) 1999-2006 <sup>c</sup>									
All Stages									
Number of cases	87,471	46,769	40,702	74,220	39,631	34,589	6,436	3,520	2,916
Percent	100%	100%	100%	100%	100%	100%	100%	100%	100%
Localized	29	28	31	29	28	30	28	26	30
Regional	15	15	16	15	15	16	14	13	15
Distant	47	49	44	48	50	45	50	53	46
Unstaged	9	8	9	8	8	9	8	7	9
5-Year Relative Survival (Percent), 1999-2006 <sup>c</sup>									
Age at Diagnosis:									
Ages <45	75.0	71.6	80.8	77.3	73.8	83.1	60.5	55.6	68.1
Ages 45-54	75.5	71.8	80.9	77.4	73.8	82.8	59.9	53.4	69.2
Ages 55-64	72.2	68.6	76.8	73.1	69.9	77.1	63.4	56.3	72.1
Ages 65-74	64.7	61.2	68.3	65.3	61.8	68.8	55.0	47.2	61.7
Ages 75+	51.9	51.0	52.5	52.8	51.8	53.6	43.0	48.2	39.1
Ages <65	74.2	70.6	79.3	75.7	72.4	80.5	61.1	55.1	69.6
Ages 65+	58.5	56.7	60.1	59.2	57.4	60.8	50.4	47.8	51.5
Stage:									
All Stages	67.4	65.4	69.6	68.3	66.6	70.2	58.5	53.9	64.0
Localized	81.0	79.7	82.4	81.5	80.5	82.5	76.5	70.9	82.2
Regional	70.6	69.3	72.1	71.6	70.3	73.0	62.9	61.1	64.4
Distant	58.0	56.2	60.3	59.5	58.0	61.6	46.0	43.0	50.1
Unstaged	65.8	64.2	67.4	64.9	63.6	66.3	62.1	56.2	67.7

<sup>a</sup> Based on End Results data from a series of hospital registries and one population-based registry.  
<sup>b</sup> Based on the SEER 9 areas (San Francisco, Connecticut, Detroit, Hawaii, Iowa, New Mexico, Seattle, Utah, Atlanta).  
Based on follow-up of patients into 2007.  
<sup>c</sup> Based on the SEER 17 areas (San Francisco, Connecticut, Detroit, Hawaii, Iowa, New Mexico, Seattle, Utah, Atlanta, San Jose-Monterey, Los Angeles, Alaska Native Registry, Rural Georgia, California excluding SF/SJM/LA, Kentucky, Louisiana and New Jersey). California excluding SF/SJM/LA, Kentucky, Louisiana, and New Jersey contribute cases for diagnosis years 2000-2006. The remaining 13 SEER Areas contribute cases for the entire period 1999-2006. Based on follow-up of patients into 2007.  
<sup>d</sup> Period survival provides a more up-to-date estimate of survival by piecing together the most recent conditional survival estimates from several cohorts. It is computed here using three year calendar blocks (2004-2006: 0-1 year survival), (2003-2005: 1-2 year survival), (2002-2004: 2-3 year survival), (2001-2003: 3-4 year survival), (2000-2002: 4-5 years survival).  
<sup>e</sup> The difference between 1975-1977 and 1999-2006 is statistically significant (p<.05).  
<sup>f</sup> The standard error is between 5 and 10 percentage points.  
<sup>g</sup> The standard error is greater than 10 percentage points.  
- Statistic could not be calculated due to fewer than 25 cases during the time period.



Table 20.10  
Cancer of the Oral Cavity and Pharynx (Invasive)

5-Year Relative and Period Survival (Percent) by Race, Sex, Diagnosis Year, Stage and Age

	All Races			Whites			Blacks		
	Total	Males	Females	Total	Males	Females	Total	Males	Females
5-Year Relative Survival (Percent)									
Year of Diagnosis:									
1960-1963 <sup>a</sup>	-	-	-	45	-	-	-	-	-
1970-1973 <sup>a</sup>	-	-	-	43	-	-	-	-	-
1975-1977 <sup>b</sup>	53.3	52.1	55.9	54.8	54.3	56.0	36.3	29.8	49.1
1978-1980 <sup>b</sup>	53.9	52.2	57.4	56.0	55.0	58.2	35.0	29.8	46.2
1981-1983 <sup>b</sup>	52.5	50.9	56.0	54.9	53.6	57.5	31.9	26.3	46.3
1984-1986 <sup>b</sup>	54.7	52.2	59.8	57.0	55.3	60.1	35.8	29.9	50.4
1987-1989 <sup>b</sup>	54.2	51.4	59.9	56.6	54.4	61.0	34.3	30.0	44.7
1990-1992 <sup>b</sup>	56.0	53.5	61.3	58.6	56.7	62.3	33.3	28.4	46.7
1993-1995 <sup>b</sup>	58.5	56.9	61.9	61.0	60.1	62.7	38.5	33.3	51.5
1996-1998 <sup>b</sup>	58.9	57.1	62.6	61.1	60.1	63.3	36.6	31.7	49.0
1999-2006 <sup>b</sup>	62.7 <sup>e</sup>	61.7 <sup>e</sup>	65.0 <sup>e</sup>	64.7 <sup>e</sup>	64.4 <sup>e</sup>	65.6 <sup>e</sup>	45.4 <sup>e</sup>	40.1 <sup>e</sup>	56.8
5-Year Period Survival (Percent) <sup>cd</sup>									
Year of Diagnosis:									
1999-2006	62.2	61.0	64.8	63.9	63.3	65.6	43.3	38.6	53.4
Stage Distribution (%) 1999-2006 <sup>c</sup>									
All Stages									
Number of cases	46,149	31,829	14,320	37,512	26,062	11,450	4,464	3,126	1,338
Percent	100%	100%	100%	100%	100%	100%	100%	100%	100%
Localized	33	30	42	35	31	44	21	17	31
Regional	46	49	38	45	49	37	51	54	44
Distant	14	15	13	13	13	11	21	22	18
Unstaged	7	7	7	7	6	7	7	6	7
5-Year Relative Survival (Percent), 1999-2006 <sup>c</sup>									
Age at Diagnosis:									
Ages <45	77.3	74.0	83.1	79.6	77.0	84.7	62.0	52.6	75.3
Ages 45-54	64.9	63.3	70.1	68.5	67.3	73.0	40.1	37.2	47.7
Ages 55-64	60.2	58.8	64.4	62.5	61.3	66.0	38.0	35.7	46.2
Ages 65-74	54.7	53.8	56.6	56.3	56.1	56.8	35.3	29.9	48.1
Ages 75+	49.1	48.2	49.9	50.2	49.5	50.9	36.8	30.0	43.4
Ages <65	65.4	63.2	71.4	67.9	66.2	73.0	44.0	39.3	55.8
Ages 65+	52.5	51.9	53.4	53.9	53.9	53.9	36.2	30.3	46.2
Stage:									
All Stages	60.9	59.8	63.6	62.8	62.2	64.1	42.2	37.5	53.2
Localized	82.5	81.7	83.8	83.0	82.6	83.7	74.0	66.4	83.6
Regional	54.7	55.8	51.7	56.8	58.6	51.3	36.7	34.7	42.4
Distant	32.2	31.3	34.7	32.2	31.5	34.0	24.0	22.6	27.8
Unstaged	53.2	51.9	55.8	53.7	52.5	55.7	37.2	32.7	46.6 <sup>f</sup>

<sup>a</sup> Based on End Results data from a series of hospital registries and one population-based registry.

<sup>b</sup> Based on the SEER 9 areas (San Francisco, Connecticut, Detroit, Hawaii, Iowa, New Mexico, Seattle, Utah, Atlanta).

Based on follow-up of patients into 2007.

<sup>c</sup> Based on the SEER 17 areas (San Francisco, Connecticut, Detroit, Hawaii, Iowa, New Mexico, Seattle, Utah, Atlanta, San Jose-Monterey, Los Angeles, Alaska Native Registry, Rural Georgia, California excluding SF/SJM/LA, Kentucky, Louisiana and New Jersey). California excluding SF/SJM/LA, Kentucky, Louisiana, and New Jersey contribute cases for diagnosis years 2000-2006. The remaining 13 SEER Areas contribute cases for the entire period 1999-2006. Based on follow-up of patients into 2007.

<sup>d</sup> Period survival provides a more up-to-date estimate of survival by piecing together the most recent conditional survival estimates from several cohorts. It is computed here using three year calendar blocks (2004-2006: 0-1 year survival),

(2003-2005: 1-2 year survival), (2002-2004: 2-3 year survival), (2001-2003: 3-4 year survival), (2000-2002: 4-5 years survival).

<sup>e</sup> The difference between 1975-1977 and 1999-2006 is statistically significant ( $p < .05$ ).

<sup>f</sup> The standard error is between 5 and 10 percentage points.

<sup>g</sup> The standard error is greater than 10 percentage points.

- Statistic could not be calculated due to fewer than 25 cases during the time period.

Table 21.8  
Cancer of the Ovary(Invasive)

5-Year Relative and Period Survival (Percent) by Race, Diagnosis Year, Stage and Age

	All Races, Females			White Females			Black Females		
	All	<65	65+	All	<65	65+	All	<65	65+
5-Year Relative Survival (Percent)									
Year of Diagnosis:									
1960-1963 <sup>a</sup>	-	-	-	32	-	-	32	-	-
1970-1973 <sup>a</sup>	-	-	-	36	-	-	32	-	-
1975-1977 <sup>b</sup>	37.3	44.4	22.1	36.6	43.7	21.7	43.2	49.3	25.7 <sup>f</sup>
1978-1980 <sup>b</sup>	38.9	47.5	22.5	38.1	46.7	22.7	40.3	49.7	13.0
1981-1983 <sup>b</sup>	40.6	50.6	24.4	40.3	50.6	24.4	39.2	46.0	23.4
1984-1986 <sup>b</sup>	39.9	49.7	25.0	39.0	48.7	24.7	41.0	53.1	21.3
1987-1989 <sup>b</sup>	40.0	51.3	24.8	40.0	51.5	25.2	35.2	47.3	17.9
1990-1992 <sup>b</sup>	42.6	55.6	25.6	42.5	56.2	25.6	38.0	50.1	17.7
1993-1995 <sup>b</sup>	43.6	55.9	28.1	42.7	55.5	27.6	43.2	55.4	27.3
1996-1998 <sup>b</sup>	45.7	57.2	29.8	45.2	56.8	29.9	41.0	52.7	22.2
1999-2006 <sup>b</sup>	45.3 <sup>e</sup>	55.9 <sup>e</sup>	29.1 <sup>e</sup>	45.0 <sup>e</sup>	56.0 <sup>e</sup>	29.5 <sup>e</sup>	36.7	44.7	20.9
5-Year Period Survival (Percent) <sup>cd</sup>									
Year of Diagnosis:									
1999-2006	46.2	56.8	29.6	46.3	56.8	30.7	37.0	47.8	17.3
Stage Distribution (%) 1999-2006 <sup>c</sup>									
All Stages									
Number of cases	33,718	18,513	15,205	28,677	15,244	13,433	2,387	1,422	965
Percent	100%	100%	100%	100%	100%	100%	100%	100%	100%
Localized	15	21	7	14	20	7	15	20	7
Regional	17	20	13	17	20	13	14	15	14
Distant	62	55	70	63	56	70	62	59	67
Unstaged	7	4	10	7	4	10	9	6	12
5-Year Relative Survival (Percent), 1999-2006 <sup>c</sup>									
Age at Diagnosis:									
Ages <45	73.1	-	-	73.6	-	-	66.3	-	-
Ages 45-54	57.5	-	-	58.5	-	-	41.8	-	-
Ages 55-64	45.0	-	-	45.3	-	-	32.3	-	-
Ages 65-74	34.9	-	-	35.3	-	-	22.9	-	-
Ages 75+	22.5	-	-	23.2	-	-	14.1	-	-
Ages <65	56.5	-	-	56.7	-	-	46.4	-	-
Ages 65+	28.9	-	-	29.4	-	-	19.3	-	-
Stage:									
All Stages	45.6	56.5	28.9	45.4	56.7	29.4	36.8	46.4	19.3
Localized	93.5	93.7	92.4	93.4	93.6	92.7	92.3	95.4	77.0 <sup>f</sup>
Regional	73.4	80.2	57.4	74.0	81.0	58.2	55.9	64.6	39.7 <sup>f</sup>
Distant	27.6	34.8	19.2	28.2	35.6	19.9	18.8	24.3	10.1
Unstaged	27.2	49.2	12.8	26.5	48.7	13.5	28.3	47.0 <sup>f</sup>	8.0

Ovary excludes borderline cases or histologies 8442, 8451, 8462, 8472, and 8473.

<sup>a</sup> Based on End Results data from a series of hospital registries and one population-based registry.<sup>b</sup> Based on the SEER 9 areas (San Francisco, Connecticut, Detroit, Hawaii, Iowa, New Mexico, Seattle, Utah, Atlanta).

Based on follow-up of patients into 2007.

<sup>c</sup> Based on the SEER 17 areas (San Francisco, Connecticut, Detroit, Hawaii, Iowa, New Mexico, Seattle, Utah, Atlanta, San Jose-Monterey, Los Angeles, Alaska Native Registry, Rural Georgia, California excluding SF/SJM/LA, Kentucky, Louisiana and New Jersey). California excluding SF/SJM/LA, Kentucky, Louisiana, and New Jersey contribute cases for diagnosis years 2000-2006.

The remaining 13 SEER Areas contribute cases for the entire period 1999-2006. Based on follow-up of patients into 2007.

<sup>d</sup> Period survival provides a more up-to-date estimate of survival by piecing together the most recent conditional survival estimates from several cohorts. It is computed here using three year calendar blocks (2004-2006: 0-1 year survival),

(2003-2005: 1-2 year survival), (2002-2004: 2-3 year survival), (2001-2003: 3-4 year survival), (2000-2002: 4-5 years survival).

<sup>e</sup> The difference between 1975-1977 and 1999-2006 is statistically significant (p<.05).<sup>f</sup> The standard error is between 5 and 10 percentage points.<sup>g</sup> The standard error is greater than 10 percentage points.

- Statistic could not be calculated due to fewer than 25 cases during the time period.

Table 22.8  
Cancer of the Pancreas (Invasive)

5-Year Relative and Period Survival (Percent) by Race, Sex, Diagnosis Year, Stage and Age

	All Races			Whites			Blacks		
	Total	Males	Females	Total	Males	Females	Total	Males	Females
5-Year Relative Survival (Percent)									
Year of Diagnosis:									
1960-1963 <sup>a</sup>	-	-	-	1	1	2	1	0	3
1970-1973 <sup>a</sup>	-	-	-	2	2	2	2	0	3
1975-1977 <sup>b</sup>	2.5	2.7	2.3	2.6	2.7	2.3	2.3	2.7	2.0
1978-1980 <sup>b</sup>	3.0	2.8	3.2	2.7	2.6	2.7	5.9	4.3	7.4
1981-1983 <sup>b</sup>	3.0	2.6	3.3	2.8	2.3	3.2	3.7	4.0	3.3
1984-1986 <sup>b</sup>	3.0	2.4	3.5	2.7	2.1	3.1	4.7	4.2	5.0
1987-1989 <sup>b</sup>	3.8	3.5	4.0	3.4	3.2	3.5	5.9	5.5	6.1
1990-1992 <sup>b</sup>	4.6	4.2	4.8	4.7	4.4	4.9	3.8	3.2	4.3
1993-1995 <sup>b</sup>	4.2	3.9	4.6	4.2	3.8	4.6	3.7	3.5	3.8
1996-1998 <sup>b</sup>	4.6	4.8	4.3	4.4	5.0	3.8	3.6	3.3	3.7
1999-2006 <sup>b</sup>	5.7 <sup>e</sup>	5.5 <sup>e</sup>	6.0 <sup>e</sup>	5.8 <sup>e</sup>	5.8 <sup>e</sup>	5.8 <sup>e</sup>	4.9 <sup>e</sup>	3.5	6.0 <sup>e</sup>
5-Year Period Survival (Percent) <sup>cd</sup>									
Year of Diagnosis:									
1999-2006	6.0	5.4	6.5	6.0	5.6	6.4	5.1	4.1	6.0
Stage Distribution (%) 1999-2006 <sup>c</sup>									
All Stages									
Number of cases	49,410	24,075	25,335	40,232	19,797	20,435	5,477	2,475	3,002
Percent	100%	100%	100%	100%	100%	100%	100%	100%	100%
Localized	8	7	9	8	7	9	9	7	10
Regional	26	26	26	26	26	26	24	24	25
Distant	53	56	50	52	55	49	55	60	52
Unstaged	14	12	15	14	12	16	12	10	14
5-Year Relative Survival (Percent), 1999-2006 <sup>c</sup>									
Age at Diagnosis:									
Ages <45	21.0	14.9	29.0	20.3	15.4	26.8	19.3	11.3	31.4 <sup>f</sup>
Ages 45-54	8.9	7.5	11.1	8.6	7.9	9.7	8.8	5.7	12.6
Ages 55-64	5.9	5.1	7.1	6.0	5.1	7.2	5.1	3.2	7.6
Ages 65-74	4.5	4.5	4.5	4.8	4.9	4.6	2.7	2.9	2.5
Ages 75+	2.8	3.1	2.6	2.9	2.9	2.9	2.0	2.5	1.8
Ages <65	8.5	6.8	10.8	8.3	7.0	10.1	8.0	5.0	11.7
Ages 65+	3.6	3.9	3.4	3.8	4.0	3.6	2.4	2.9	2.2
Stage:									
All Stages	5.6	5.3	5.9	5.6	5.4	5.7	5.2	4.2	6.0
Localized	22.5	20.4	24.1	22.9	21.7	23.8	16.4	11.1	19.6
Regional	8.8	8.5	9.0	8.8	8.8	8.8	7.6	5.7	9.1
Distant	1.9	2.0	1.7	1.7	1.9	1.5	2.1	2.3	1.9
Unstaged	5.0	5.8	4.3	4.8	5.7	4.0	6.3	6.5	6.0

<sup>a</sup> Based on End Results data from a series of hospital registries and one population-based registry.<sup>b</sup> Based on the SEER 9 areas (San Francisco, Connecticut, Detroit, Hawaii, Iowa, New Mexico, Seattle, Utah, Atlanta).

Based on follow-up of patients into 2007.

<sup>c</sup> Based on the SEER 17 areas (San Francisco, Connecticut, Detroit, Hawaii, Iowa, New Mexico, Seattle, Utah, Atlanta, San Jose-Monterey, Los Angeles, Alaska Native Registry, Rural Georgia, California excluding SF/SJM/LA, Kentucky, Louisiana and New Jersey). California excluding SF/SJM/LA, Kentucky, Louisiana, and New Jersey contribute cases for diagnosis years 2000-2006. The remaining 13 SEER Areas contribute cases for the entire period 1999-2006. Based on follow-up of patients into 2007.<sup>d</sup> Period survival provides a more up-to-date estimate of survival by piecing together the most recent conditional survival estimates from several cohorts. It is computed here using three year calendar blocks (2004-2006: 0-1 year survival),

(2003-2005: 1-2 year survival), (2002-2004: 2-3 year survival), (2001-2003: 3-4 year survival), (2000-2002: 4-5 years survival).

<sup>e</sup> The difference between 1975-1977 and 1999-2006 is statistically significant (p<.05).<sup>f</sup> The standard error is between 5 and 10 percentage points.<sup>g</sup> The standard error is greater than 10 percentage points.

- Statistic could not be calculated due to fewer than 25 cases during the time period.

Table 23.8  
Cancer of the Prostate (Invasive)

5-Year Relative and Period Survival (Percent) by Race, Diagnosis Year, Stage and Age

	All Races, Males			White Males			Black Males		
	All	<65	65+	All	<65	65+	All	<65	65+
5-Year Relative Survival (Percent)									
Year of Diagnosis:									
1960-1963 <sup>a</sup>	-	-	-	50	-	-	35	-	-
1970-1973 <sup>a</sup>	-	-	-	63	-	-	55	-	-
1975-1977 <sup>b</sup>	69.3	73.6	67.7	70.2	75.4	68.4	61.4	62.1	61.1
1978-1980 <sup>b</sup>	71.7	75.5	70.3	72.9	77.1	71.4	62.8	65.2	61.6
1981-1983 <sup>b</sup>	73.5	76.3	72.5	74.6	77.9	73.5	63.7	65.4	62.9
1984-1986 <sup>b</sup>	76.3	77.6	75.9	77.6	79.3	77.1	66.3	67.5	65.8
1987-1989 <sup>b</sup>	83.7	83.3	83.9	85.3	84.8	85.5	72.1	72.7	71.9
1990-1992 <sup>b</sup>	93.7	93.1	93.9	94.8	94.1	95.0	85.2	86.6	84.5
1993-1995 <sup>b</sup>	95.9	95.9	95.9	96.6	96.5	96.6	92.2	93.1	91.7
1996-1998 <sup>b</sup>	98.1	98.5	97.9	98.6	98.9	98.4	95.2	96.7	93.8
1999-2006 <sup>b</sup>	99.6 <sup>e</sup>	99.3 <sup>e</sup>	99.8 <sup>e</sup>	99.9 <sup>e</sup>	99.5 <sup>e</sup>	99.8 <sup>e</sup>	97.3 <sup>e</sup>	98.6 <sup>e</sup>	96.0 <sup>e</sup>
5-Year Period Survival (Percent) <sup>cd</sup>									
Year of Diagnosis:									
1999-2006	99.4	99.1	99.5	99.7	99.2	99.7	96.5	98.4	94.2
Stage Distribution (%) 1999-2006 <sup>c</sup>									
All Stages									
Number of cases	350,279	134,964	215,315	278,949	105,328	173,621	43,891	21,462	22,429
Percent	100%	100%	100%	100%	100%	100%	100%	100%	100%
Localized	80	78	82	80	77	82	79	78	80
Regional	12	18	8	12	19	9	11	16	7
Distant	4	3	5	4	3	5	6	5	7
Unstaged	3	2	5	3	1	4	3	2	5
5-Year Relative Survival (Percent), 1999-2006 <sup>c</sup>									
Age at Diagnosis:									
Ages <45	95.3	-	-	95.1	-	-	95.5	-	-
Ages 45-54	97.8	-	-	98.0	-	-	97.1	-	-
Ages 55-64	99.2	-	-	99.4	-	-	98.1	-	-
Ages 65-74	100.0	-	-	100.0	-	-	97.4	-	-
Ages 75+	97.7	-	-	98.4	-	-	86.5	-	-
Ages <65	98.8	-	-	99.0	-	-	97.7	-	-
Ages 65+	99.5	-	-	99.7	-	-	94.1	-	-
Stage:									
All Stages	99.1	98.8	99.5	99.6	99.0	99.7	95.9	97.7	94.1
Localized	100.0	100.0	100.0	100.0	100.0	100.0	100.0	100.0	100.0
Regional	100.0	100.0	100.0	100.0	99.8	100.0	100.0	100.0	99.8
Distant	30.2	31.2	29.8	29.7	30.9	29.3	28.9	30.0	28.2
Unstaged	75.0	84.6	72.3	75.3	84.4	73.0	65.2	80.4	58.5

<sup>a</sup> Based on End Results data from a series of hospital registries and one population-based registry.<sup>b</sup> Based on the SEER 9 areas (San Francisco, Connecticut, Detroit, Hawaii, Iowa, New Mexico, Seattle, Utah, Atlanta).

Based on follow-up of patients into 2007.

<sup>c</sup> Based on the SEER 17 areas (San Francisco, Connecticut, Detroit, Hawaii, Iowa, New Mexico, Seattle, Utah, Atlanta, San Jose-Monterey, Los Angeles, Alaska Native Registry, Rural Georgia, California excluding SF/SJM/LA, Kentucky, Louisiana and New Jersey). California excluding SF/SJM/LA, Kentucky, Louisiana, and New Jersey contribute cases for diagnosis years 2000-2006. The remaining 13 SEER Areas contribute cases for the entire period 1999-2006. Based on follow-up of patients into 2007.<sup>d</sup> Period survival provides a more up-to-date estimate of survival by piecing together the most recent conditional survival estimates from several cohorts. It is computed here using three year calendar blocks (2004-2006: 0-1 year survival),

(2003-2005: 1-2 year survival), (2002-2004: 2-3 year survival), (2001-2003: 3-4 year survival), (2000-2002: 4-5 years survival).

<sup>e</sup> The difference between 1975-1977 and 1999-2006 is statistically significant (p<.05).<sup>f</sup> The standard error is between 5 and 10 percentage points.<sup>g</sup> The standard error is greater than 10 percentage points.

- Statistic could not be calculated due to fewer than 25 cases during the time period.

Table 24.8  
Cancer of the Stomach (Invasive)

5-Year Relative and Period Survival (Percent) by Race, Sex, Diagnosis Year, Stage and Age

	All Races			Whites			Blacks		
	Total	Males	Females	Total	Males	Females	Total	Males	Females
5-Year Relative Survival (Percent)									
Year of Diagnosis:									
1960-1963 <sup>a</sup>	-	-	-	11	10	13	8	5	14
1970-1973 <sup>a</sup>	-	-	-	13	12	14	13	15	10
1975-1977 <sup>b</sup>	15.9	15.1	17.3	14.8	13.8	16.5	16.3	16.4	16.1
1978-1980 <sup>b</sup>	16.8	14.8	19.9	16.1	14.3	19.1	16.9	16.0	18.6
1981-1983 <sup>b</sup>	18.0	17.0	19.5	16.9	16.0	18.2	17.2	16.8	17.6
1984-1986 <sup>b</sup>	18.4	16.3	21.8	17.6	15.1	21.6	20.0	17.5	23.4
1987-1989 <sup>b</sup>	20.7	17.5	26.1	19.2	16.1	24.5	20.0	17.2	24.5
1990-1992 <sup>b</sup>	21.6	18.6	26.5	19.3	16.4	24.1	23.7	22.8	24.9
1993-1995 <sup>b</sup>	21.8	20.5	24.0	20.7	19.3	23.2	20.3	18.3	23.2
1996-1998 <sup>b</sup>	23.2	21.8	25.4	21.1	19.1	24.4	23.6	20.9	26.8
1999-2006 <sup>b</sup>	26.7 <sup>e</sup>	24.8 <sup>e</sup>	29.8 <sup>e</sup>	25.6 <sup>e</sup>	23.5 <sup>e</sup>	29.2 <sup>e</sup>	26.2 <sup>e</sup>	24.1 <sup>e</sup>	28.9 <sup>e</sup>
5-Year Period Survival (Percent) <sup>cd</sup>									
Year of Diagnosis:									
1999-2006	27.9	26.1	30.5	26.2	24.6	28.6	27.2	23.0	32.6
Stage Distribution (%) 1999-2006 <sup>c</sup>									
All Stages									
Number of cases	35,338	21,273	14,065	25,233	15,542	9,691	4,389	2,422	1,967
Percent	100%	100%	100%	100%	100%	100%	100%	100%	100%
Localized	23	22	25	23	22	25	24	22	26
Regional	32	33	29	31	33	28	30	32	29
Distant	34	35	32	34	35	33	33	36	30
Unstaged	11	10	14	11	10	14	13	11	15
5-Year Relative Survival (Percent), 1999-2006 <sup>c</sup>									
Age at Diagnosis:									
Ages <45	30.0	28.3	32.1	27.9	25.8	30.8	36.6	33.4	40.6
Ages 45-54	29.0	27.0	32.8	26.8	24.7	30.9	31.1	27.4	37.3
Ages 55-64	26.5	24.4	31.1	24.3	22.7	28.2	26.8	22.1	34.8
Ages 65-74	26.8	24.8	30.2	25.5	23.3	29.9	23.2	21.3	25.8
Ages 75+	22.0	19.9	24.3	21.2	19.4	23.2	17.2	12.5	19.8
Ages <65	28.0	25.9	31.9	25.8	23.8	29.7	30.4	26.3	37.1
Ages 65+	24.3	22.5	26.8	23.3	21.5	25.9	20.4	17.9	22.6
Stage:									
All Stages	26.0	24.1	28.8	24.4	22.6	27.4	25.5	22.8	29.0
Localized	62.5	59.1	67.1	60.4	56.6	65.8	58.5	56.9	60.2
Regional	27.0	26.1	28.7	25.5	24.9	26.7	27.5	25.0	30.9
Distant	3.4	3.4	3.4	3.1	3.1	3.1	3.9	3.0	5.1
Unstaged	17.3	13.6	21.6	16.0	12.0	20.9	16.3	12.2	19.6

<sup>a</sup> Based on End Results data from a series of hospital registries and one population-based registry.<sup>b</sup> Based on the SEER 9 areas (San Francisco, Connecticut, Detroit, Hawaii, Iowa, New Mexico, Seattle, Utah, Atlanta).

Based on follow-up of patients into 2007.

<sup>c</sup> Based on the SEER 17 areas (San Francisco, Connecticut, Detroit, Hawaii, Iowa, New Mexico, Seattle, Utah, Atlanta, San Jose-Monterey, Los Angeles, Alaska Native Registry, Rural Georgia, California excluding SF/SJM/LA, Kentucky, Louisiana and New Jersey). California excluding SF/SJM/LA, Kentucky, Louisiana, and New Jersey contribute cases for diagnosis years 2000-2006. The remaining 13 SEER Areas contribute cases for the entire period 1999-2006. Based on follow-up of patients into 2007.<sup>d</sup> Period survival provides a more up-to-date estimate of survival by piecing together the most recent conditional survival estimates from several cohorts. It is computed here using three year calendar blocks (2004-2006: 0-1 year survival),

(2003-2005: 1-2 year survival), (2002-2004: 2-3 year survival), (2001-2003: 3-4 year survival), (2000-2002: 4-5 years survival).

<sup>e</sup> The difference between 1975-1977 and 1999-2006 is statistically significant ( $p < .05$ ).<sup>f</sup> The standard error is between 5 and 10 percentage points.<sup>g</sup> The standard error is greater than 10 percentage points.

- Statistic could not be calculated due to fewer than 25 cases during the time period.

Table 25.8  
Cancer of the Testis (Invasive)

5-Year Relative and Period Survival (Percent) by Race, Diagnosis Year, Stage and Age

	All Races, Males			White Males			Black Males		
	All	<50	50+	All	<50	50+	All	<50	50+
5-Year Relative Survival (Percent)									
Year of Diagnosis:									
1960-1963 <sup>a</sup>	-	-	-	63	-	-	-	-	-
1970-1973 <sup>a</sup>	-	-	-	72	-	-	-	-	-
1975-1977 <sup>b</sup>	82.8	83.3	78.7	82.7	83.2	78.4	-	-	-
1978-1980 <sup>b</sup>	89.1	89.5	84.0	89.4	89.8	84.9	72.7 <sup>f</sup>	77.1 <sup>f</sup>	-
1981-1983 <sup>b</sup>	92.2	92.7	86.8	92.5	92.9	87.0	87.5 <sup>f</sup>	84.7 <sup>f</sup>	-
1984-1986 <sup>b</sup>	92.8	93.6	82.1	93.2	94.0	82.3	87.0 <sup>f</sup>	89.4 <sup>f</sup>	-
1987-1989 <sup>b</sup>	95.1	95.0	95.6	95.4	95.3	95.3	88.4 <sup>f</sup>	87.8 <sup>f</sup>	-
1990-1992 <sup>b</sup>	95.8	95.8	94.3	96.2	96.1	95.2	83.4 <sup>f</sup>	-	-
1993-1995 <sup>b</sup>	95.7	96.2	86.7	96.0	96.5	87.8	88.2	89.4	-
1996-1998 <sup>b</sup>	95.7	96.3	86.6	95.8	96.5	86.6	88.7	90.1	-
1999-2006 <sup>b</sup>	96.3 <sup>e</sup>	96.6 <sup>e</sup>	92.4 <sup>e</sup>	96.7 <sup>e</sup>	96.9 <sup>e</sup>	93.3 <sup>e</sup>	86.7	87.5	-
5-Year Period Survival (Percent) <sup>cd</sup>									
Year of Diagnosis:									
1999-2006	95.1	95.3	92.7	95.5	95.6	93.6	85.0	86.3	-
Stage Distribution (%) 1999-2006 <sup>c</sup>									
All Stages									
Number of cases	14,918	13,533	1,385	13,706	12,434	1,272	415	377	38
Percent	100%	100%	100%	100%	100%	100%	100%	100%	100%
Localized	70	70	69	70	70	70	60	61	50
Regional	17	17	16	17	17	16	20	20	21
Distant	11	11	11	11	11	11	17	17	18
Unstaged	2	1	3	2	1	3	2	1	11
5-Year Relative Survival (Percent), 1999-2006 <sup>c</sup>									
Age at Diagnosis:									
Ages <45	95.7	-	-	95.9	-	-	90.1	-	-
Ages 45-54	95.2	-	-	95.9	-	-	83.7 <sup>f</sup>	-	-
Ages 55-64	90.6	-	-	91.4	-	-	-	-	-
Ages 65-74	86.1	-	-	85.1	-	-	-	-	-
Ages 75+	64.8 <sup>g</sup>	-	-	76.4 <sup>g</sup>	-	-	-	-	-
Ages <65	95.5	-	-	95.8	-	-	88.6	-	-
Ages 65+	80.8	-	-	84.5 <sup>f</sup>	-	-	-	-	-
Stage:									
All Stages	95.3	95.6	92.4	95.7	95.8	93.5	88.4	89.8	71.4 <sup>f</sup>
Localized	99.2	99.3	97.8	99.2	99.3	98.2	99.4	99.7	-
Regional	96.0	96.0	95.1	96.5	96.3	96.9	85.5	88.5	-
Distant	71.5	72.5	59.8	72.3	73.3	60.6	55.7 <sup>f</sup>	55.4 <sup>f</sup>	-
Unstaged	87.2	90.9	68.4 <sup>f</sup>	89.5	91.6	75.9 <sup>f</sup>	-	-	-

<sup>a</sup> Based on End Results data from a series of hospital registries and one population-based registry.<sup>b</sup> Based on the SEER 9 areas (San Francisco, Connecticut, Detroit, Hawaii, Iowa, New Mexico, Seattle, Utah, Atlanta).

Based on follow-up of patients into 2007.

<sup>c</sup> Based on the SEER 17 areas (San Francisco, Connecticut, Detroit, Hawaii, Iowa, New Mexico, Seattle, Utah, Atlanta, San Jose-Monterey, Los Angeles, Alaska Native Registry, Rural Georgia, California excluding SF/SJM/LA, Kentucky, Louisiana and New Jersey). California excluding SF/SJM/LA, Kentucky, Louisiana, and New Jersey contribute cases for diagnosis years 2000-2006.

The remaining 13 SEER Areas contribute cases for the entire period 1999-2006. Based on follow-up of patients into 2007.

<sup>d</sup> Period survival provides a more up-to-date estimate of survival by piecing together the most recent conditional survival estimates from several cohorts. It is computed here using three year calendar blocks (2004-2006: 0-1 year survival),

(2003-2005: 1-2 year survival), (2002-2004: 2-3 year survival), (2001-2003: 3-4 year survival), (2000-2002: 4-5 years survival).

<sup>e</sup> The difference between 1975-1977 and 1999-2006 is statistically significant (p<.05).<sup>f</sup> The standard error is between 5 and 10 percentage points.<sup>g</sup> The standard error is greater than 10 percentage points.

- Statistic could not be calculated due to fewer than 25 cases during the time period.

Table 26.8  
Cancer of the Thyroid (Invasive)

5-Year Relative and Period Survival (Percent) by Race, Sex, Diagnosis Year, Stage and Age

	All Races			Whites			Blacks		
	Total	Males	Females	Total	Males	Females	Total	Males	Females
5-Year Relative Survival (Percent)									
Year of Diagnosis:									
1960-1963 <sup>a</sup>	-	-	-	83	75	87	-	-	-
1970-1973 <sup>a</sup>	-	-	-	86	82	87	-	-	-
1975-1977 <sup>b</sup>	93.3	92.8	93.5	93.1	92.4	93.3	90.8	-	91.9
1978-1980 <sup>b</sup>	93.1	88.4	94.6	92.6	88.7	93.8	90.5	68.8 <sup>g</sup>	95.8
1981-1983 <sup>b</sup>	94.3	92.9	94.7	93.7	91.7	94.4	96.6	100.0	93.7
1984-1986 <sup>b</sup>	93.9	91.0	94.9	94.0	90.6	94.8	90.0	86.2 <sup>f</sup>	90.8
1987-1989 <sup>b</sup>	95.1	92.4	95.9	94.9	92.4	95.5	92.5	91.2 <sup>f</sup>	92.6
1990-1992 <sup>b</sup>	95.0	91.2	96.2	95.6	92.4	96.6	87.3	84.6 <sup>f</sup>	88.2
1993-1995 <sup>b</sup>	96.0	92.6	97.0	96.1	92.5	97.2	93.4	88.2 <sup>f</sup>	94.5
1996-1998 <sup>b</sup>	96.2	91.7	97.4	96.5	92.2	97.8	95.4	86.2 <sup>f</sup>	96.7
1999-2006 <sup>b</sup>	97.4 <sup>e</sup>	94.7 <sup>e</sup>	98.2 <sup>e</sup>	97.6 <sup>e</sup>	95.0 <sup>e</sup>	98.4 <sup>e</sup>	95.4	92.6	95.9
5-Year Period Survival (Percent) <sup>cd</sup>									
Year of Diagnosis:									
1999-2006	97.4	94.2	98.3	97.7	94.3	98.5	95.7	93.2	95.9
Stage Distribution (%) 1999-2006 <sup>c</sup>									
All Stages									
Number of cases	44,818	10,328	34,490	37,008	8,823	28,185	2,646	495	2,151
Percent	100%	100%	100%	100%	100%	100%	100%	100%	100%
Localized	68	58	71	68	58	71	75	66	77
Regional	24	31	23	25	31	23	15	18	14
Distant	5	9	4	5	8	4	8	13	7
Unstaged	2	3	2	2	3	2	2	3	2
5-Year Relative Survival (Percent), 1999-2006 <sup>c</sup>									
Age at Diagnosis:									
Ages <45	99.4	98.3	99.6	99.5	98.5	99.7	98.4	93.1	99.2
Ages 45-54	98.5	95.5	99.4	98.7	95.7	99.6	95.3	87.6	96.8
Ages 55-64	96.1	93.7	97.0	96.4	93.6	97.6	92.8	91.0	92.0
Ages 65-74	91.7	87.7	93.6	92.3	88.6	94.2	87.0	83.9 <sup>f</sup>	87.9
Ages 75+	82.0	76.9	82.8	83.5	76.9	84.0	67.1 <sup>f</sup>	-	64.2 <sup>f</sup>
Ages <65	98.6	96.4	99.2	98.8	96.6	99.4	96.5	91.6	97.4
Ages 65+	88.6	84.8	89.8	89.4	85.3	90.4	81.8	84.5 <sup>f</sup>	81.0
Stage:									
All Stages	97.3	94.4	98.0	97.6	94.6	98.2	94.7	90.9	95.4
Localized	99.8	99.6	99.9	99.8	99.6	99.9	99.2	96.8	99.3
Regional	97.1	95.2	97.8	97.2	95.0	98.0	94.4	92.6	94.5
Distant	58.1	52.1	61.3	57.1	50.1	61.3	51.8	55.7 <sup>f</sup>	49.4 <sup>f</sup>
Unstaged	89.7	81.4	92.3	89.6	81.2	92.1	78.9 <sup>f</sup>	-	78.6 <sup>f</sup>

<sup>a</sup> Based on End Results data from a series of hospital registries and one population-based registry.<sup>b</sup> Based on the SEER 9 areas (San Francisco, Connecticut, Detroit, Hawaii, Iowa, New Mexico, Seattle, Utah, Atlanta).

Based on follow-up of patients into 2007.

<sup>c</sup> Based on the SEER 17 areas (San Francisco, Connecticut, Detroit, Hawaii, Iowa, New Mexico, Seattle, Utah, Atlanta, San Jose-Monterey, Los Angeles, Alaska Native Registry, Rural Georgia, California excluding SF/SJM/LA, Kentucky, Louisiana and New Jersey). California excluding SF/SJM/LA, Kentucky, Louisiana, and New Jersey contribute cases for diagnosis years 2000-2006. The remaining 13 SEER Areas contribute cases for the entire period 1999-2006. Based on follow-up of patients into 2007.<sup>d</sup> Period survival provides a more up-to-date estimate of survival by piecing together the most recent conditional survival estimates from several cohorts. It is computed here using three year calendar blocks (2004-2006: 0-1 year survival),

(2003-2005: 1-2 year survival), (2002-2004: 2-3 year survival), (2001-2003: 3-4 year survival), (2000-2002: 4-5 years survival).

<sup>e</sup> The difference between 1975-1977 and 1999-2006 is statistically significant (p<.05).<sup>f</sup> The standard error is between 5 and 10 percentage points.<sup>g</sup> The standard error is greater than 10 percentage points.

- Statistic could not be calculated due to fewer than 25 cases during the time period.

Table 27.8  
Cancer of the Urinary Bladder (Invasive and *In Situ*)

5-Year Relative and Period Survival (Percent) by Race, Sex, Diagnosis Year, Stage and Age

	All Races			Whites			Blacks		
	Total	Males	Females	Total	Males	Females	Total	Males	Females
5-Year Relative Survival (Percent)									
Year of Diagnosis:									
1960-1963 <sup>a</sup>	-	-	-	53	53	53	24	24	24
1970-1973 <sup>a</sup>	-	-	-	61	61	60	36	38	27
1975-1977 <sup>b</sup>	73.9	75.3	70.0	74.8	75.9	71.9	50.8	57.0	38.9 <sup>f</sup>
1978-1980 <sup>b</sup>	75.8	76.9	72.6	76.6	77.3	74.6	55.6	64.3	40.8
1981-1983 <sup>b</sup>	78.3	79.6	74.7	79.1	80.1	76.1	60.1	65.4	48.3 <sup>f</sup>
1984-1986 <sup>b</sup>	78.4	79.8	74.7	79.0	80.1	75.6	61.0	63.8	54.7 <sup>f</sup>
1987-1989 <sup>b</sup>	80.5	82.7	74.1	81.4	83.4	75.4	63.4	68.1	54.0 <sup>f</sup>
1990-1992 <sup>b</sup>	80.6	82.9	74.0	81.6	83.8	75.1	64.5	67.3	60.1
1993-1995 <sup>b</sup>	81.8	83.5	77.0	82.6	83.9	78.9	61.9	69.3	46.9
1996-1998 <sup>b</sup>	80.5	81.7	77.3	81.3	82.4	77.9	62.8	66.0	55.3
1999-2006 <sup>b</sup>	81.1 <sup>e</sup>	82.2 <sup>e</sup>	77.9 <sup>e</sup>	82.0 <sup>e</sup>	82.8 <sup>e</sup>	79.8 <sup>e</sup>	66.2 <sup>e</sup>	70.3 <sup>e</sup>	58.7 <sup>e</sup>
5-Year Period Survival (Percent) <sup>cd</sup>									
Year of Diagnosis:									
1999-2006	79.4	80.7	75.4	79.8	80.8	76.7	65.8	70.5	57.5
Stage Distribution (%) 1999-2006 <sup>c</sup>									
All Stages									
Number of cases	84,047	62,782	21,265	75,701	56,975	18,726	4,017	2,536	1,481
Percent	100%	100%	100%	100%	100%	100%	100%	100%	100%
In Situ	50	51	48	51	51	50	37	40	30
Localized	35	36	35	35	36	34	40	39	41
Regional	8	7	8	7	7	8	12	11	14
Distant	4	3	5	4	3	5	7	6	10
Unstaged	3	3	3	3	3	3	5	5	5
5-Year Relative Survival (Percent), 1999-2006 <sup>c</sup>									
Age at Diagnosis:									
Ages <45	90.4	91.2	88.4	91.3	91.8	89.9	77.9	79.0	74.4 <sup>f</sup>
Ages 45-54	85.2	85.4	84.6	85.9	85.7	86.5	72.2	76.9	59.5
Ages 55-64	84.1	84.3	83.5	84.6	84.6	84.7	71.6	73.6	66.5
Ages 65-74	79.1	79.9	76.3	79.6	80.0	78.1	65.5	72.5	52.3
Ages 75+	72.0	75.1	64.9	72.9	75.7	66.3	51.3	55.4	46.1
Ages <65	85.1	85.3	84.5	85.7	85.6	85.9	72.8	75.6	66.1
Ages 65+	75.7	77.8	70.1	76.4	78.1	71.7	58.8	65.2	49.6
Stage:									
All Stages	79.3	80.7	75.1	79.9	81.0	76.6	65.5	71.2	55.5
In Situ	96.6	96.7	96.4	96.7	96.6	97.0	94.0	97.0	86.1
Localized	73.3	75.1	67.6	73.7	75.4	68.4	63.2	66.5	57.1
Regional	36.1	37.2	33.2	36.5	37.2	34.7	30.1	36.2	21.7
Distant	5.6	5.9	5.2	5.7	6.2	4.5	6.1	0.0	8.6
Unstaged	55.3	59.5	44.9	54.0	57.8	43.9	44.3 <sup>f</sup>	48.4 <sup>f</sup>	35.8 <sup>f</sup>

<sup>a</sup> Based on End Results data from a series of hospital registries and one population-based registry.

<sup>b</sup> Based on the SEER 9 areas (San Francisco, Connecticut, Detroit, Hawaii, Iowa, New Mexico, Seattle, Utah, Atlanta).

Based on follow-up of patients into 2007.

<sup>c</sup> Based on the SEER 17 areas (San Francisco, Connecticut, Detroit, Hawaii, Iowa, New Mexico, Seattle, Utah, Atlanta, San Jose-Monterey, Los Angeles, Alaska Native Registry, Rural Georgia, California excluding SF/SJM/LA, Kentucky, Louisiana and New Jersey). California excluding SF/SJM/LA, Kentucky, Louisiana, and New Jersey contribute cases for diagnosis years 2000-2006. The remaining 13 SEER Areas contribute cases for the entire period 1999-2006. Based on follow-up of patients into 2007.

<sup>d</sup> Period survival provides a more up-to-date estimate of survival by piecing together the most recent conditional survival estimates from several cohorts. It is computed here using three year calendar blocks (2004-2006: 0-1 year survival),

(2003-2005: 1-2 year survival), (2002-2004: 2-3 year survival), (2001-2003: 3-4 year survival), (2000-2002: 4-5 years survival).

<sup>e</sup> The difference between 1975-1977 and 1999-2006 is statistically significant ( $p < .05$ ).

<sup>f</sup> The standard error is between 5 and 10 percentage points.

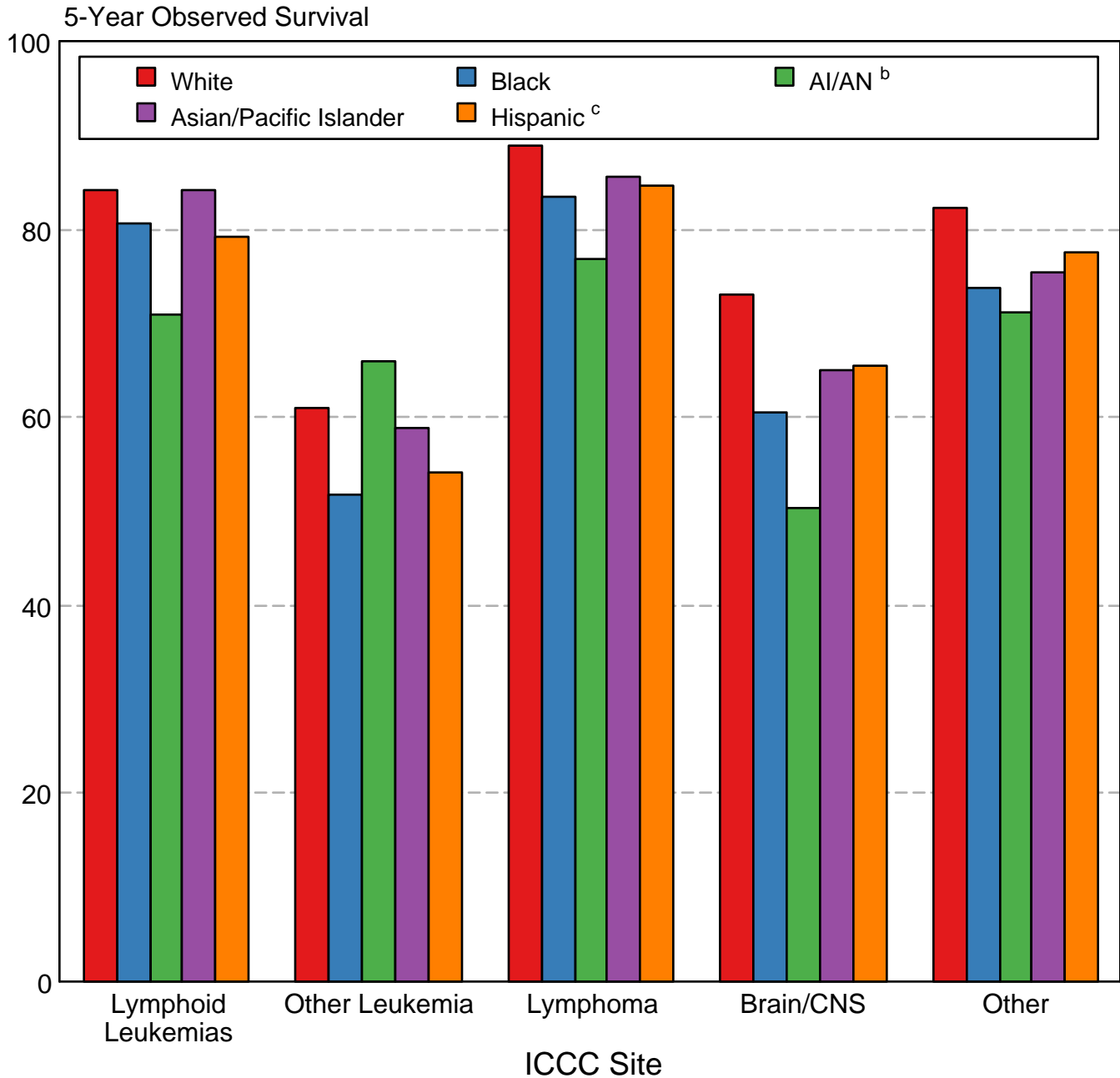
<sup>g</sup> The standard error is greater than 10 percentage points.

- Statistic could not be calculated due to fewer than 25 cases during the time period.



Figure 29.3

## Childhood Cancer 5-Year Observed Survival (%) by ICCC Group<sup>a</sup> and Race/Ethnicity Both Sexes, Under 20 Years of Age, 1999-2006



Source: SEER 17 areas (San Francisco, Connecticut, Detroit, Hawaii, Iowa, New Mexico, Seattle, Utah, Atlanta, San Jose-Monterey, Los Angeles, Alaska Native Registry, Rural Georgia, California excluding SF/SJM/LA, Kentucky, Louisiana, and New Jersey). California excluding SF/SJM/LA, Kentucky, Louisiana, and New Jersey contribute cases for diagnosis years 2000-2006. The remaining 13 SEER Areas contribute cases for the entire period 1999-2006.

International Classification of Childhood Cancer is based on ICD-O-3. Steliarova-Foucher E, Stiller C, Lacour B, Kaatsch P. International Classification of Childhood Cancer, Third Edition. Cancer. April 1, 2006; Vol 103, No. 7, pg 1457-1467.

<sup>a</sup> Excludes myelodysplastic syndromes (MDS) and benign brain tumors.

<sup>b</sup> American Indian/Alaska Native. Survival data for American Indian/Alaska Native are based on the CHSDA (Contract Health Service Delivery Area) counties.

<sup>c</sup> Hispanic is not mutually exclusive from whites, blacks, Asian/Pacific Islanders, and American Indians/Alaska Natives. Survival data for Hispanics are based on NHIA and excludes cases from the Alaska Native Registry and Kentucky.