

Table VII-1
CORPUS AND UTERUS, NOS CANCER (Invasive)

TRENDS IN SEER INCIDENCE AND U.S. MORTALITY, BY RACE AND AGE

	All Races, Females			White Females			Black Females		
	All	<50	50+	All	<50	50+	All	<50	50+
<u>INCIDENCE TRENDS (expressed in percents)§:</u>									
<u>1973-93</u>									
All Ages									
Percent Change (PC)	-28.1	-26.0	-28.4	-27.8	-28.9	-27.6	3.6	4.8	3.5
Est. Annual PC (EAPC)	-2.1★	-1.9★	-2.1★	-2.1★	-1.9★	-2.1★	-0.2	-1.7	0.0
Under 65									
Percent Change (PC)	-43.0	-	-	-43.4	-	-	11.8	-	-
Est. Annual PC (EAPC)	-3.5★	-	-	-3.5★	-	-	-0.1	-	-
65 and over									
Percent Change (PC)	3.2	-	-	5.9	-	-	-2.8	-	-
Est. Annual PC (EAPC)	0.1	-	-	0.3	-	-	-0.2	-	-
<u>1975-79 - ALL AGES</u>									
Percent Change (PC)	-18.5	-10.2	-19.5	-18.4	-9.7	-19.5	-3.5	12.2	-5.7
Est. Annual PC (EAPC)	-6.4★	-4.1	-6.7★	-6.4★	-4.3	-6.7★	-2.4	3.2	-3.2
<u>1989-93 - ALL AGES</u>									
Percent Change (PC)	-1.1	11.9	-2.9	-1.4	4.7	-2.2	-5.8	58.7	-11.0
Est. Annual PC (EAPC)	-0.4◆	3.7◆	-1.0◆	-0.4◆	1.4◇	-0.6◆	-2.3	17.3★◆	-4.1
<u>MORTALITY TRENDS (expressed in percents)δ:</u>									
<u>1973-93</u>									
All Ages									
Percent Change (PC)	-25.9	-49.3	-24.0	-26.5	-47.2	-24.9	-22.2	-62.1	-18.3
Est. Annual PC (EAPC)	-1.6★	-3.4★	-1.5★	-1.7★	-3.1★	-1.6★	-1.1★	-4.7★	-0.9★
Under 65									
Percent Change (PC)	-39.9	-	-	-39.4	-	-	-43.8	-	-
Est. Annual PC (EAPC)	-2.8★	-	-	-2.9★	-	-	-2.8★	-	-
65 and over									
Percent Change (PC)	-16.5	-	-	-18.2	-	-	-4.7	-	-
Est. Annual PC (EAPC)	-0.9★	-	-	-1.1★	-	-	-0.1	-	-
<u>1975-79 - ALL AGES</u>									
Percent Change (PC)	-4.7	-11.7	-4.2	-5.6	-11.6	-5.2	0.6	-12.3	1.7
Est. Annual PC (EAPC)	-1.5★	-5.1	-1.3★	-1.8★	-5.1	-1.6★	0.2	-4.9★	0.6
<u>1989-93 - ALL AGES</u>									
Percent Change (PC)	-2.6	-6.3	-2.4	-2.9	-8.9	-2.5	-1.4	-1.1	-1.5
Est. Annual PC (EAPC)	-0.8	-2.2	-0.7	-0.9	-2.9★	-0.7	-0.2	-0.9	-0.1

The Est. Annual PC is the Estimated Annual Percent Change (EAPC) over the time interval.

§ SEER Program.

δ NCHS public use tape.

★ The EAPC is significantly different from zero ($p < .05$).

◆ The EAPC for 1989-93 is significantly different from the EAPC for 1975-79 ($p < .05$).

◇ The EAPC for 1989-93 is significantly different from the EAPC for 1975-79 ($p < .10$).

- Statistic could not be calculated.

Table VII-2
CORPUS AND UTERUS, NOS CANCER (Invasive)

SEER INCIDENCES AND U.S. MORTALITY^δ RATES, AGE-ADJUSTED AND AGE-SPECIFIC RATES, BY RACE

	Incidences [§]			US Mortality ^δ		
	All Races, Females	White Females	Black Females	All Races, Females	White Females	Black Females
<u>AGE-SPECIFIC RATES, 1989-93</u>						
AGE AT DIAGNOSIS/DEATH:						
0-4	0.0	0.0	0.0	0.0	0.0	0.0
5-9	0.0	0.0	0.0	0.0	0.0	0.0
10-14	0.0	0.0	0.0	0.0	0.0	0.0
15-19	0.1	0.1	0.2	0.0	0.0	0.0
20-24	0.2	0.1	0.2	0.0	0.0	0.1
25-29	1.1	0.9	0.9	0.1	0.1	0.2
30-34	2.3	2.1	2.1	0.2	0.1	0.4
35-39	6.0	5.9	4.5	0.4	0.4	0.6
40-44	12.1	12.3	5.8	0.9	0.8	1.2
45-49	23.2	24.2	12.4	1.6	1.6	2.0
50-54	41.6	43.9	17.3	3.4	3.2	4.9
55-59	60.8	63.5	39.1	5.9	5.4	10.6
60-64	83.0	88.4	68.8	10.7	9.7	20.9
65-69	99.4	106.0	73.5	17.1	15.7	32.2
70-74	112.6	119.2	84.5	22.3	20.7	41.3
75-79	107.6	113.3	75.6	26.5	25.2	44.9
80-84	86.1	88.9	78.7	30.1	28.9	49.4
85+	68.7	69.1	74.3	35.2	34.3	50.1
<u>AGE-ADJUSTED RATES, 1989-93</u>						
AGE AT DIAGNOSIS/DEATH:						
All ages	21.4	22.4	15.0	3.4	3.2	5.9
Under 65	12.7	13.3	8.1	1.2	1.1	2.1
65 and over	100.7	106.2	77.5	23.1	21.8	40.4
All ages (world std.) [⊕]	17.6	18.5	12.2	2.6	2.4	4.5

§ SEER Program. Rates are per 100,000 and are age-adjusted to the 1970 U.S. standard population, except where noted.

δ NCHS public use tape. Rates are per 100,000 and are age-adjusted to the 1970 U.S. standard population, except where noted.

⊕ Rates are per 100,000 and are age-adjusted to the world standard population.

Table VII-3
CORPUS AND UTERUS, NOS CANCER (Invasive)

SEER INCIDENCE§ AND U.S. MORTALITYδ RATES, AGE-ADJUSTED RATES, BY RACE AND AGE

	All Races, Females			White Females			Black Females		
	All	<50	50+	All	<50	50+	All	<50	50+
<u>SEER INCIDENCE RATES</u>									
YEAR OF DIAGNOSIS:									
1973	28.4	5.3	99.6	29.5	5.4	103.8	15.0	2.2	54.3
1974	30.8	4.8	110.7	32.2	5.0	116.2	13.1	2.3	46.4
1975	32.1	4.9	116.1	33.6	5.0	121.8	17.1	2.7	61.8
1976	31.0	4.7	112.0	32.5	4.6	118.4	14.2	2.4	50.7
1977	28.5	4.3	103.1	29.8	4.3	108.3	17.1	2.6	61.9
1978	26.5	4.6	94.3	27.9	4.7	99.5	15.9	2.8	56.1
1979	24.9	4.0	89.4	26.0	4.0	93.9	14.4	2.9	49.9
1980	24.2	3.7	87.5	25.3	3.7	91.8	14.2	1.8	52.4
1981	24.0	4.1	85.5	25.0	4.0	89.9	14.3	2.0	52.4
1982	23.7	3.8	85.0	24.8	3.8	89.5	14.7	1.9	54.0
1983	23.4	3.6	84.4	24.6	3.7	89.0	16.0	2.5	57.6
1984	22.6	3.4	81.9	23.9	3.6	86.6	14.7	1.2	56.5
1985	22.0	3.4	79.5	23.1	3.6	83.6	15.4	1.6	57.7
1986	21.3	3.6	75.9	22.4	3.7	80.0	14.2	1.8	52.4
1987	21.5	3.7	76.5	22.7	3.9	80.7	13.3	1.2	50.7
1988	20.5	3.3	73.3	21.4	3.3	77.3	14.1	2.1	50.9
1989	21.3	3.4	76.4	22.2	3.6	79.6	16.4	1.4	62.8
1990	21.7	3.3	78.5	23.0	3.5	83.3	14.5	1.6	54.3
1991	21.3	3.3	77.0	22.4	3.3	81.3	14.7	2.3	53.2
1992	21.6	3.6	76.9	22.6	3.6	81.2	14.4	2.1	52.6
1993	21.0	3.9	73.6	21.9	3.8	78.0	14.7	2.7	51.6
1989-93	21.4	3.5	76.5	22.4	3.6	80.7	15.0	2.0	54.9
<u>U.S. MORTALITY RATES</u>									
YEAR OF DEATH:									
1973	4.6	0.5	17.4	4.3	0.4	16.4	8.0	1.1	29.5
1974	4.5	0.5	16.8	4.2	0.4	15.9	7.0	0.7	26.6
1975	4.3	0.4	16.4	4.1	0.4	15.7	6.6	0.7	24.8
1976	4.3	0.4	16.6	4.1	0.4	15.8	6.8	0.6	25.6
1977	4.3	0.4	16.2	4.0	0.4	15.4	7.0	0.6	26.5
1978	4.2	0.4	15.8	3.9	0.4	15.0	6.8	0.6	25.8
1979	4.1	0.3	15.7	3.8	0.3	14.9	6.6	0.6	25.4
1980	4.2	0.3	16.0	3.9	0.3	15.1	6.9	0.6	26.3
1981	4.0	0.3	15.3	3.8	0.3	14.6	6.1	0.4	23.8
1982	3.9	0.3	15.2	3.7	0.3	14.3	6.3	0.3	24.7
1983	3.9	0.3	15.1	3.7	0.2	14.4	6.0	0.5	23.1
1984	3.8	0.3	14.7	3.6	0.2	13.9	6.3	0.5	23.9
1985	3.7	0.3	14.5	3.6	0.3	13.7	6.1	0.4	23.6
1986	3.6	0.3	13.9	3.4	0.2	13.1	6.0	0.4	23.3
1987	3.6	0.3	13.7	3.4	0.2	13.0	5.9	0.4	22.9
1988	3.5	0.2	13.6	3.3	0.2	12.7	6.1	0.3	23.8
1989	3.4	0.3	13.2	3.2	0.3	12.3	5.9	0.4	23.0
1990	3.5	0.2	13.5	3.3	0.2	12.6	6.0	0.3	23.5
1991	3.4	0.2	12.9	3.1	0.2	12.0	6.0	0.4	23.3
1992	3.4	0.2	13.1	3.2	0.2	12.3	5.7	0.3	22.4
1993	3.4	0.2	12.9	3.1	0.2	12.0	6.0	0.3	23.4
1989-93	3.4	0.2	13.1	3.2	0.2	12.2	5.9	0.3	23.1

§ SEER Program. Rates are per 100,000 and are age-adjusted to the 1970 U.S. standard population.

δ NCHS public use tape. Rates are per 100,000 and are age-adjusted to the 1970 U.S. standard population.

Table VII-4
CORPUS AND UTERUS, NOS CANCER (Invasive)

SURVIVAL RATES, BY RACE, DIAGNOSIS YEAR, STAGE AND AGE

	All Races, Females			White Females			Black Females		
	All	<50	50+	All	<50	50+	All	<50	50+
<u>5-YR RELATIVE SURVIVAL RATES</u>									
YEAR OF DIAGNOSIS:									
1960-63 ^a	-	-	-	73	-	-	31	-	-
1970-73 ^a	-	-	-	81	-	-	44	-	-
1974-76 ^b	87.8	92.2	87.3	88.7	92.9	88.2	60.6	84.1 [†]	55.7
1977-79 ^b	84.9	92.2	84.0	86.3	92.9	85.4	57.8	82.4 [†]	52.1
1980-82 ^b	81.6	91.4	80.3	82.8	92.2	81.7	53.9	85.1 [†]	49.0
1983-85 ^b	83.2	92.9	82.0	84.9	93.6	83.9	54.1	81.0 [†]	50.2
1986-92 ^b	83.7 Ω	90.3	82.7 Ω	85.5 Ω	91.2	84.7 Ω	55.9	78.2	52.2
1986-92 ^b									
ALL STAGES	83.7	90.3	82.7	85.5	91.2	84.7	55.9	78.2	52.2
LOCALIZED	95.3	95.7	95.3	96.0	96.3	96.1	82.4	90.8	80.1
REGIONAL	66.0	78.4	64.4	69.3	78.9	68.1	37.5	-	34.8
DISTANT	26.1	52.6	23.6	27.9	54.2 [†]	25.4	12.8	-	11.1
UNSTAGED	55.7	76.2 [†]	52.0	57.9	75.3 [†]	55.1	31.4 [†]	-	23.2 [†]

STAGE DISTRIBUTION (%) 1986-92^b

ALL STAGES									
Number of cases	17,718	2,192	15,526	15,923	1,858	14,065	1,029	138	891
Percent	100%	100%	100%	100%	100%	100%	100%	100%	100%
LOCALIZED	73	79	73	75	80	74	51	64	49
REGIONAL	13	11	13	12	11	12	22	14	23
DISTANT	9	6	10	9	6	9	19	12	20
UNSTAGED	4	4	4	4	4	4	8	10	8

5-YR RELATIVE SURVIVAL RATES, 1986-92^b

AGE AT DIAGNOSIS:									
<45	89.9	-	-	90.2	-	-	84.2	-	-
45-54	90.1	-	-	91.2	-	-	66.9 [†]	-	-
55-64	86.3	-	-	88.5	-	-	61.0	-	-
65-74	83.0	-	-	85.3	-	-	47.2	-	-
75+	71.6	-	-	73.7	-	-	37.9 [†]	-	-
Under 65	87.9	-	-	89.4	-	-	66.7	-	-
65 and over	79.5	-	-	81.7	-	-	44.2	-	-

^a Rates are based on End Results data from a series of hospital registries and one population-based registry.

^b Rates are from the SEER Program. They are based on data from population-based registries in Connecticut, New Mexico, Utah, Iowa, Hawaii, Atlanta, Detroit, Seattle-Puget Sound and San Francisco-Oakland. Rates are based on follow-up of patients through 1993.

Ω The difference in rates between 1974-76 and 1986-92 is statistically significant ($p < .05$).

[†] The standard error of the survival rate is between 5 and 10 percentage points.

^{††} The standard error of the survival rate is greater than 10 percentage points.

- Statistic could not be calculated.

Table VII-5
 CORPUS AND UTERUS, NOS CANCER (Invasive)
 INCIDENCE, MORTALITY, AND SURVIVAL RATES

By Year of Diagnosis/Death

All Races, Females

Year of Diagnosis/Death

	1973	1974	1975	1976	1977	1978	1979	1980	1981	1982	1983	1984	1985	1986	1987	1988	1989	1990	1991	1992	1993
Incidence																					
SEER	28.4	30.8	32.1	31.0	28.5	26.5	24.9	24.2	24.0	23.7	23.4	22.6	22.0	21.3	21.5	20.5	21.3	21.7	21.3	21.6	21.0
Mortality																					
U.S.	4.6	4.5	4.3	4.3	4.3	4.2	4.1	4.2	4.0	3.9	3.9	3.8	3.7	3.6	3.6	3.5	3.4	3.5	3.4	3.4	3.4
SEER	4.5	4.4	3.9	4.2	4.2	4.1	4.0	4.2	4.1	4.3	4.2	4.0	4.1	3.4	3.3	3.3	3.5	3.4	3.4	3.5	3.3
Relative Survival Rates (SEER)																					
1-year	92.9	93.9	94.4	94.3	94.1	93.9	92.8	92.2	91.0	91.5	92.0	91.6	93.2	93.2	92.2	92.4	92.5	92.8	92.2	93.0	
2-year	89.3	90.4	91.7	91.1	89.8	90.0	88.6	86.2	86.3	86.4	87.1	87.4	88.4	87.3	87.7	88.5	88.3	88.4	88.4		
3-year	87.0	88.2	89.9	89.1	87.5	87.2	85.9	83.3	84.0	83.9	84.0	85.2	85.8	85.7	84.7	85.6	86.2	85.6			
4-year	86.5	87.7	88.5	88.3	85.9	85.4	84.5	81.8	82.7	83.2	82.8	84.3	84.2	84.5	84.0	84.2	85.2				
5-year	86.2	87.3	88.3	87.8	85.7	85.0	84.0	80.8	81.8	82.0	81.9	83.9	83.9	83.7	83.0	83.6					
6-year	85.7	87.0	88.1	87.2	85.2	84.8	83.7	80.6	81.6	81.8	81.6	83.8	83.4	83.5	82.2						
7-year	85.5	87.0	87.9	87.2	84.6	84.7	83.7	80.6	81.2	81.8	80.9	83.2	83.0	83.5							
8-year	85.5	87.0	87.9	87.2	84.6	84.7	83.7	80.3	80.8	81.7	80.6	83.2	82.9								
9-year	85.5	87.0	87.9	87.2	84.6	84.7	83.7	80.3	80.6	81.7	80.4	83.0									
10-year	85.5	87.0	87.9	87.2	84.5	84.7	83.7	80.3	80.5	81.7	80.4										
11-year	85.5	87.0	87.9	87.2	84.2	84.7	83.7	80.3	80.5	81.7											
12-year	85.5	87.0	87.9	87.2	84.2	84.7	83.7	80.3	80.5												
13-year	85.5	87.0	87.9	87.2	84.2	84.7	83.7	80.0													
14-year	85.5	87.0	87.9	87.2	84.2	84.7	83.6														
15-year	85.5	87.0	87.9	87.2	84.2	84.7															
16-year	85.5	87.0	87.9	87.2	84.2																
17-year	85.5	87.0	87.9	87.2																	
18-year	85.5	87.0	87.9																		
19-year	85.5	87.0																			
20-year	85.5																				

Note: Incidence and mortality rates are per 100,000 and are age-adjusted to the 1970 U.S. standard population.

Survival rates are relative rates expressed as percents.

Table VII-6
CORPUS AND UTERUS, NOS CANCER (Invasive)

Percent Diagnosed With Cancer In 10, 20 and 30 Years and In Remaining Lifetime,
 Given Cancer Free At Current Age By Race

Lifetime Risk (Percent) of Being Diagnosed With Cancer and
 Lifetime Risk (Percent) of Dying From Cancer

SEER Areas, 1991-93

All Races

Current Age	+10 yrs	+20 yrs	+30 yrs	Eventually
0	0.00	0.00	0.01	2.65
10	0.00	0.01	0.05	2.68
20	0.01	0.05	0.22	2.68
30	0.04	0.22	0.70	2.69
40	0.18	0.67	1.45	2.67
50	0.50	1.29	2.11	2.55
60	0.84	1.70	2.09	2.17

Lifetime Risk of Being Diagnosed = 2.65%
 Lifetime Risk of Dying = 0.53%

Whites

Current Age	+10 yrs	+20 yrs	+30 yrs	Eventually
0	0.00	0.00	0.01	2.81
10	0.00	0.01	0.05	2.83
20	0.01	0.04	0.22	2.84
30	0.04	0.22	0.73	2.85
40	0.18	0.70	1.54	2.83
50	0.53	1.38	2.25	2.70
60	0.90	1.82	2.22	2.29

Lifetime Risk of Being Diagnosed = 2.81%
 Lifetime Risk of Dying = 0.52%

Blacks

Current Age	+10 yrs	+20 yrs	+30 yrs	Eventually
0	0.00	0.00	0.01	1.59
10	0.00	0.01	0.04	1.63
20	0.01	0.04	0.14	1.63
30	0.03	0.14	0.39	1.64
40	0.10	0.36	0.88	1.64
50	0.27	0.82	1.28	1.61
60	0.61	1.12	1.41	1.48

Lifetime Risk of Being Diagnosed = 1.59%
 Lifetime Risk of Dying = 0.67%

Table VII-7
CORPUS AND UTERUS, NOS CANCER (Invasive)

AVERAGE ANNUAL AGE-ADJUSTED CANCER MORTALITY^δ RATES BY STATE, 1989-93

All Races, Females

State	Rate	SE	Rank	PD	State	Rate	SE	Rank	PD
TOTAL U.S.	3.4	0.02							
High Five States									
District of Columbia	4.5*	0.46	(01)	32.4					
New Jersey	3.9	0.12	(02)	14.7					
Pennsylvania	3.9⊕	0.09	(03)	14.7					
New York	3.9⊕	0.08	(04)	14.7					
Ohio	3.8	0.10	(05)	11.8					
Low Five States									
Hawaii	2.7*	0.30	(47)	-20.6					
Alaska	2.6*	0.64	(48)	-23.5					
Nevada	2.6*	0.27	(49)	-23.5					
Arizona	2.5⊕*	0.14	(50)	-26.5					
Wyoming	2.2*	0.41	(51)	-35.3					
Alabama	2.8*	0.14	(44)	-17.6	Montana	3.3	0.34	(23)	-2.9
Alaska	2.6*	0.64	(48)	-23.5	Nebraska	3.3	0.24	(21)	-2.9
Arizona	2.5⊕*	0.14	(50)	-26.5	Nevada	2.6*	0.27	(49)	-23.5
Arkansas	3.1	0.19	(35)	-8.8	New Hampshire	3.1	0.30	(38)	-8.8
California	3.3	0.06	(25)	-2.9	New Jersey	3.9	0.12	(02)	14.7
Colorado	2.8*	0.17	(46)	-17.6	New Mexico	3.0	0.26	(43)	-11.8
Connecticut	3.2	0.17	(29)	-5.9	New York	3.9⊕	0.08	(04)	14.7
Delaware	3.7	0.42	(08)	8.8	North Carolina	3.3	0.12	(20)	-2.9
District of Columbia	4.5*	0.46	(01)	32.4	North Dakota	3.3	0.39	(22)	-2.9
Florida	3.0	0.08	(39)	-11.8	Ohio	3.8	0.10	(05)	11.8
Georgia	3.0	0.13	(40)	-11.8	Oklahoma	3.2	0.17	(33)	-5.9
Hawaii	2.7*	0.30	(47)	-20.6	Oregon	3.3	0.18	(26)	-2.9
Idaho	2.8*	0.30	(45)	-17.6	Pennsylvania	3.9⊕	0.09	(03)	14.7
Illinois	3.7	0.10	(12)	8.8	Rhode Island	3.2	0.29	(28)	-5.9
Indiana	3.6	0.14	(13)	5.9	South Carolina	3.5	0.18	(16)	2.9
Iowa	3.6	0.19	(15)	5.9	South Dakota	3.1	0.36	(37)	-8.8
Kansas	3.6	0.21	(14)	5.9	Tennessee	3.4	0.14	(19)	0.0
Kentucky	3.3	0.16	(24)	-2.9	Texas	3.0	0.08	(41)	-11.8
Louisiana	3.2	0.16	(31)	-5.9	Utah	3.5	0.30	(17)	2.9
Maine	3.5	0.29	(18)	2.9	Vermont	3.7	0.46	(10)	8.8
Maryland	3.7	0.16	(07)	8.8	Virginia	3.1	0.13	(36)	-8.8
Massachusetts	3.3	0.12	(27)	-2.9	Washington	3.2	0.15	(34)	-5.9
Michigan	3.7	0.11	(11)	8.8	West Virginia	3.2	0.22	(32)	-5.9
Minnesota	3.2	0.15	(30)	-5.9	Wisconsin	3.7	0.15	(06)	8.8
Mississippi	3.0	0.19	(42)	-11.8	Wyoming	2.2*	0.41	(51)	-35.3
Missouri	3.7	0.15	(09)	8.8					

^δ NCHS public use tape. Rates are per 100,000 and are age-adjusted to the 1970 U.S. standard population.

SE Standard error of the rate.

PD Percent difference between state rate and total U.S. rate.

* Absolute difference between state rate and total U.S. rate is 15% or more.

⊕ Difference between state rate and total U.S. rate is statistically significant (p<=.0002).

Table VII-8
CORPUS AND UTERUS, NOS CANCER (Invasive)AGE-ADJUSTED SEER INCIDENCE RATES \S , SEER MORTALITY RATES δ , AND 5-YEAR RELATIVE SURVIVAL RATES ϕ
By Registry, Race and Age

	All Races, Females			White Females			Black Females		
	All	<50	50+	All	<50	50+	All	<50	50+
<u>SEER INCIDENCE RATES\S, 1989-93</u>									
REGISTRY									
Standard 9 registries	21.4	3.5	76.5	22.4	3.6	80.7	15.0	2.0	54.9
San Francisco-Oakland	20.9	3.0	76.1	23.1	2.8	85.6	14.3	2.0	52.4
Connecticut	22.9	3.9	81.7	23.5	4.0	83.7	15.2	1.8	56.6
Metropolitan Detroit	22.3	4.0	78.7	23.9	4.5	83.7	15.4	2.4	55.7
Hawaii	18.2	5.2	58.5	20.8	3.5	74.2	-	-	-
Iowa	21.5	3.6	76.7	21.6	3.7	76.8	-	-	-
New Mexico	16.5	3.7	56.1	16.9	3.7	57.8	-	-	-
Seattle-Puget Sound	23.6	3.2	86.5	24.1	3.3	88.4	12.7	0.5	50.3
Utah	22.9	3.4	83.1	23.1	3.3	84.0	-	-	-
Metropolitan Atlanta	18.1	2.6	65.8	19.0	2.9	68.6	15.4	1.9	57.0
San Jose-Monterey	20.5	2.8	75.0	21.9	2.7	80.8	7.0	2.9	19.6
Los Angeles	20.0	3.0	72.4	22.1	3.3	80.0	14.1	1.7	52.5
<u>SEER MORTALITY RATESδ, 1989-93</u>									
REGISTRY									
Standard 9 registries	3.4	0.2	13.2	3.3	0.2	12.8	5.2	0.3	20.5
San Francisco-Oakland	3.6	0.3	13.7	3.6	0.2	14.1	4.6	0.7	16.7
Connecticut	3.2	0.2	12.7	3.1	0.2	12.3	5.8	0.2	23.3
Metropolitan Detroit	3.8	0.2	14.9	3.4	0.2	13.2	5.4	0.3	21.4
Hawaii	2.7	0.4	10.0	2.7	0.3	9.9	-	-	-
Iowa	3.6	0.2	13.9	3.6	0.2	13.9	-	-	-
New Mexico	3.0	0.4	10.9	3.0	0.4	11.0	-	-	-
Seattle-Puget Sound	3.1	0.2	12.2	3.1	0.2	12.1	7.2	0.3	28.5
Utah	3.5	0.2	13.9	3.5	0.2	13.9	-	-	-
Metropolitan Atlanta	3.1	0.2	12.2	2.6	0.2	9.9	5.1	0.1	20.7
San Jose-Monterey	3.4	0.3	12.9	3.4	0.3	13.2	1.1	0.0	4.6
Los Angeles	3.5	0.2	13.7	3.4	0.3	13.3	5.9	0.3	23.2
<u>SURVIVAL RATESϕ, 1986-92</u>									
REGISTRY									
Standard 9 registries	83.7	90.3	82.7	85.5	91.2	84.7	55.9	78.2	52.2
San Francisco-Oakland	83.6	87.7	83.1	86.5	91.0	86.0	48.0	-	47.6 \uparrow
Connecticut	82.4	91.0	81.2	83.1	90.9	81.9	65.2 \uparrow	-	62.3 \uparrow
Metropolitan Detroit	80.1	90.4	78.4	84.0	91.7	82.7	54.7	80.9 \uparrow	50.6
Hawaii	84.1	87.6	82.7	88.5	69.3 \uparrow	91.9	-	-	-
Iowa	84.5	89.5	83.8	84.6	89.7	83.8	-	-	-
New Mexico	85.2	94.1	83.7	85.0	94.5	83.4	-	-	-
Seattle-Puget Sound	88.6	92.3	88.2	89.2	92.5	88.9	50.7 \uparrow	-	43.3 \uparrow
Utah	84.4	91.4	83.2	84.6	91.2	83.6	-	-	-
Metropolitan Atlanta	81.7	89.2	80.1	87.1	91.2	86.3	58.2	81.0 \uparrow	52.8 \uparrow

Note: San Jose-Monterey and Los Angeles are new SEER areas as of 1992 and their data are only used in this table and not other tables in this section.

\S SEER Program. Incidence rates are per 100,000 and are age-adjusted to the 1970 U.S. standard population.

δ NCHS public use tape. Mortality rates are per 100,000 and are age-adjusted to the 1970 U.S. standard population.

ϕ Survival rates are relative rates expressed as percents and are based on follow-up of patients through 1993.

\uparrow The standard error of the survival rate is between 5 and 10 percentage points.

\uparrow The standard error of the survival rate is greater than 10 percentage points.

- Statistic could not be calculated or populations are inadequate.

SEER Incidence and U.S. Mortality Corpus Uteri, Under 50 Years of Age By Race

White

Black

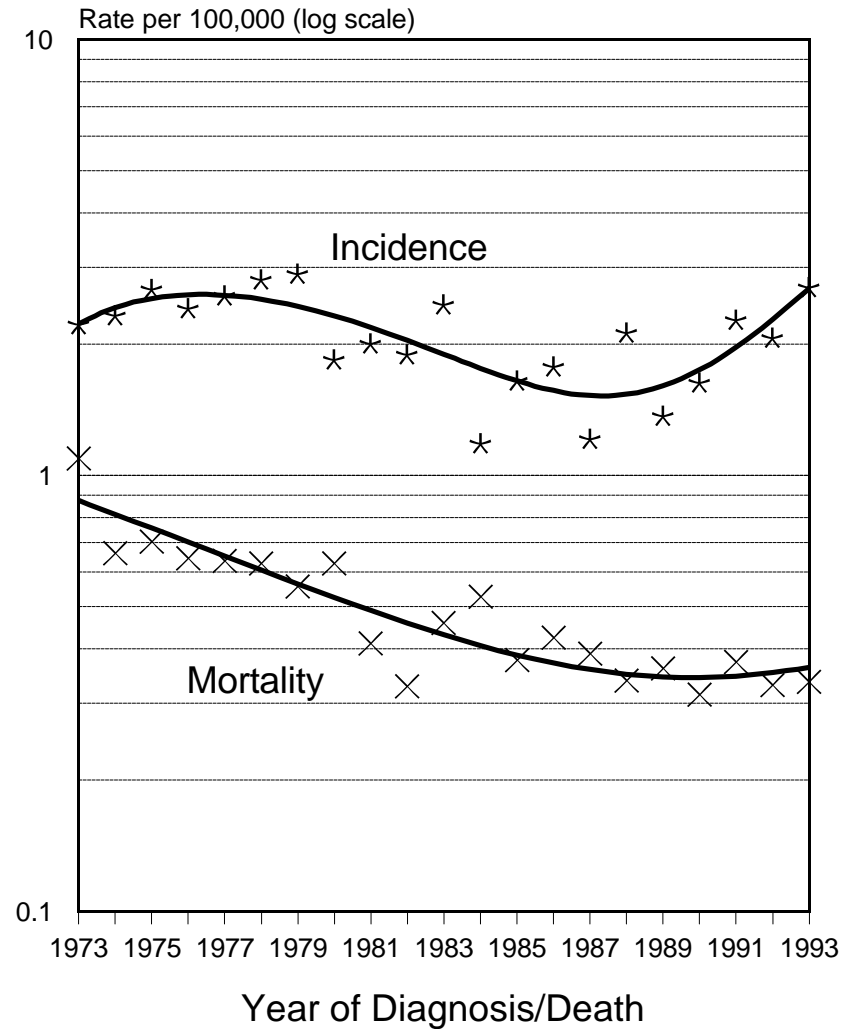
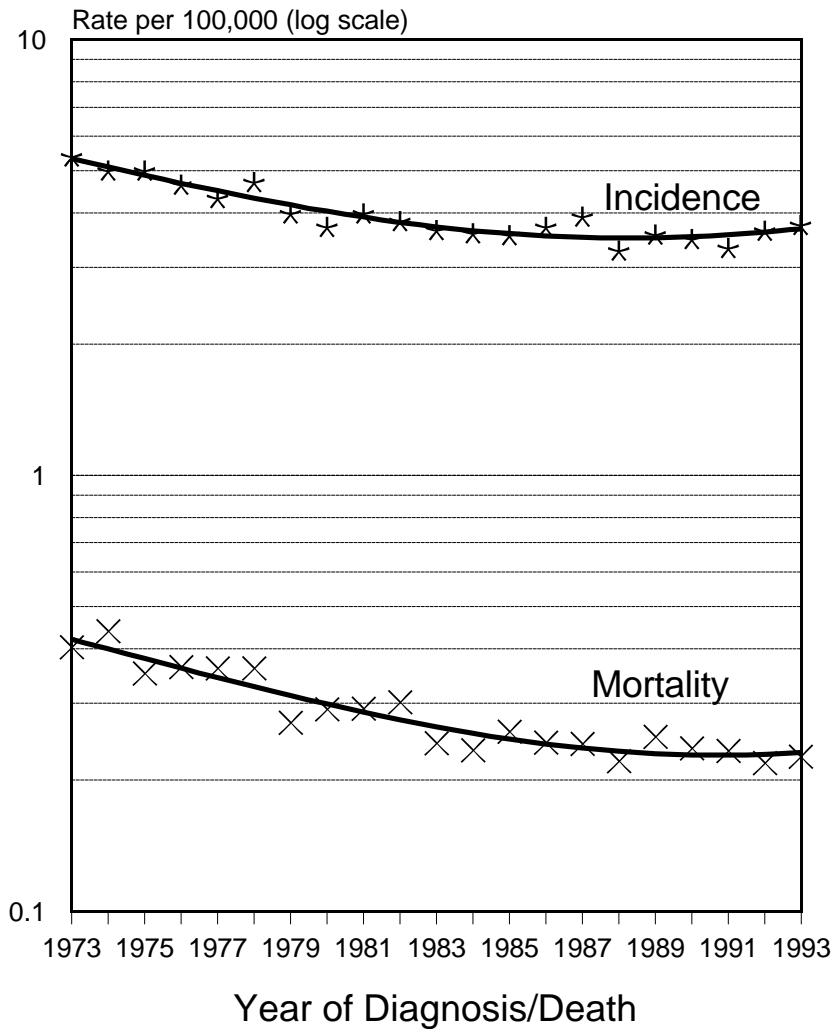
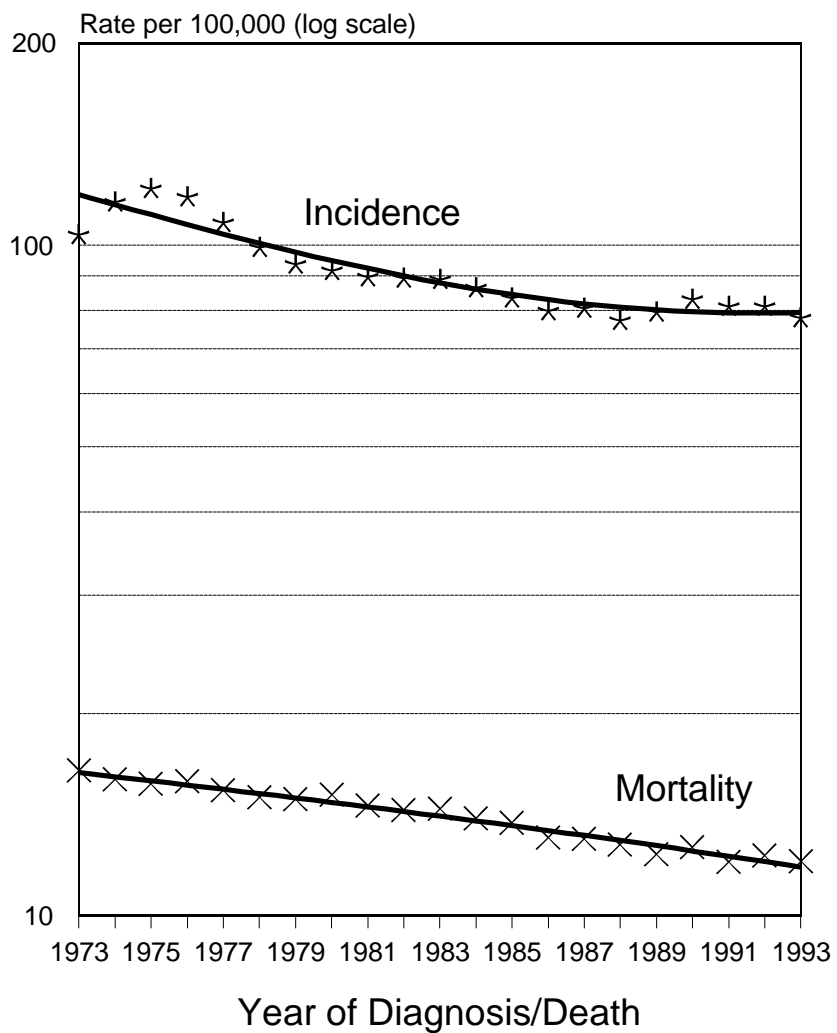


Figure VII-1

SEER Incidence and U.S. Mortality Corpus Uteri, Ages 50 and Over By Race

White



Black

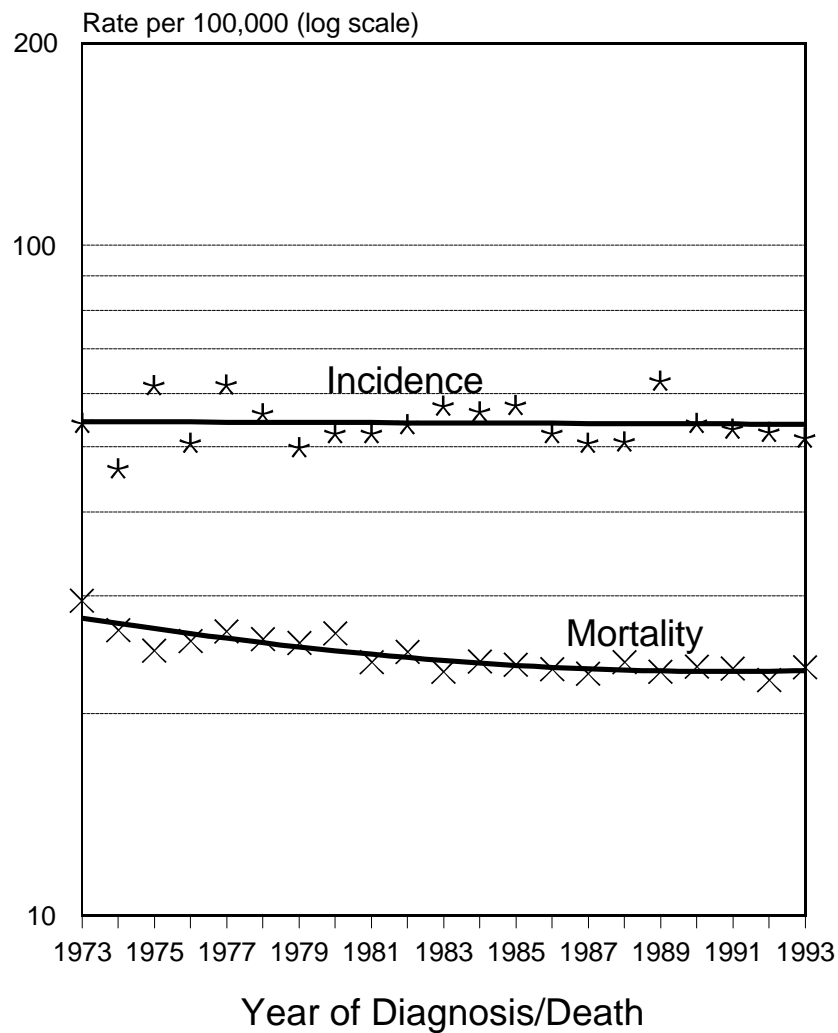


Figure VII-2