

Table II-1  
ALL SITES (Invasive)

TRENDS IN SEER INCIDENCE<sup>a</sup> AND U.S. MORTALITY<sup>b</sup> USING THE JOINPOINT REGRESSION PROGRAM, 1975-2003  
WITH UP TO THREE JOINPOINTS BY RACE AND SEX

		Joinpoint Segment 1		Joinpoint Segment 2		Joinpoint Segment 3		Joinpoint Segment 4	
		Year	APC	Year	APC	Year	APC	Year	APC
<u>SEER Cancer Incidence<sup>a</sup></u>									
All Races	Male and Female	1975-1992	1.4*	1992-2003	-0.4*				
All Races	Male	1975-1989	1.3*	1989-1992	5.0*	1992-1995	-4.4*	1995-2003	-0.3
All Races	Female	1975-1979	-0.2	1979-1987	1.5*	1987-2001	0.3*	2001-2003	-2.3
White	Male and Female	1975-1992	1.5*	1992-1995	-1.5	1995-2001	0.6	2001-2003	-2.9
White	Male	1975-1989	1.4*	1989-1992	4.8*	1992-1995	-4.6*	1995-2003	-0.2
White	Female	1975-1979	-0.1	1979-1987	1.6*	1987-2001	0.4*	2001-2003	-2.4
Black	Male and Female	1975-1984	1.6*	1984-1989	0.4	1989-1992	4.2*	1992-2003	-1.0*
Black	Male	1975-1981	2.8*	1981-1989	0.6	1989-1992	6.7*	1992-2003	-1.8*
Black	Female	1975-1991	1.1*	1991-2003	-0.2				
<u>SEER Delay-Adjusted Incidence<sup>a</sup></u>									
All Races	Male and Female	1975-1983	0.9*	1983-1992	1.8*	1992-1995	-1.5	1995-2003	0.1
All Races	Male	1975-1989	1.3*	1989-1992	5.1*	1992-1995	-4.5*	1995-2003	0.0
All Races	Female	1975-1979	-0.3	1979-1987	1.6*	1987-2003	0.3*		
White	Male and Female	1975-1982	0.9*	1982-1992	1.8*	1992-1995	-1.6	1995-2003	0.4*
White	Male	1975-1989	1.4*	1989-1992	5.0*	1992-1995	-4.7*	1995-2003	0.2
White	Female	1975-1979	-0.2	1979-1987	1.6*	1987-2003	0.4*		
Black	Male and Female	1975-1983	1.7*	1983-1989	0.6	1989-1992	4.0	1992-2003	-0.7*
Black	Male	1975-1981	2.8*	1981-1989	0.7	1989-1992	6.6*	1992-2003	-1.6*
Black	Female	1975-1991	1.1*	1991-2003	0.1				
<u>U.S. Cancer Mortality<sup>b</sup></u>									
All Races	Male and Female	1975-1990	0.5*	1990-1994	-0.4	1994-2003	-1.1*		
All Races	Male	1975-1979	1.0*	1979-1990	0.3*	1990-1993	-0.4	1993-2003	-1.6*
All Races	Female	1975-1992	0.5*	1992-2003	-0.8*				
White	Male and Female	1975-1992	0.4*	1992-2003	-1.0*				
White	Male	1975-1980	0.8*	1980-1992	0.2*	1992-2003	-1.4*		
White	Female	1975-1992	0.5*	1992-2003	-0.8*				
Black	Male and Female	1975-1983	1.3*	1983-1991	0.7*	1991-1995	-0.8	1995-2003	-1.7*
Black	Male	1975-1982	1.8*	1982-1990	1.0*	1990-1994	-0.5	1994-2003	-2.3*
Black	Female	1975-1991	1.0*	1991-1997	-0.5*	1997-2003	-1.1*		

Joinpoint Regression Program Version 3.1, April 2006, National Cancer Institute. (<http://srab.cancer.gov/joinpoint/>).

The APC is the Annual Percent Change based on rates age-adjusted to the 2000 US Std Population (19 age groups - Census P25-1130).

<sup>a</sup> Trends are from the SEER 9 areas (San Francisco, Connecticut, Detroit, Hawaii, Iowa, New Mexico, Seattle, Utah, and Atlanta).

<sup>b</sup> Trends are from the NCHS public use data file for the total US.

\* The APC is significantly different from zero (p<.05).

Table II-2  
ALL SITES (Invasive)

AGE ADJUSTED SEER INCIDENCE<sup>a</sup> RATES BY YEAR, RACE AND SEX

	<u>All Races</u>			<u>Whites</u>			<u>Blacks</u>		
	<u>Total</u>	<u>Males</u>	<u>Females</u>	<u>Total</u>	<u>Males</u>	<u>Females</u>	<u>Total</u>	<u>Males</u>	<u>Females</u>
<u>AGE-ADJUSTED RATES</u>									
<u>YEAR OF DIAGNOSIS:</u>									
1975	400.3	466.6	365.8	402.0	468.4	369.5	425.8	524.3	356.3
1976	407.2	481.0	367.2	409.6	481.6	373.2	427.2	552.7	340.3
1977	407.6	486.4	363.5	409.1	486.9	367.7	442.2	577.4	351.5
1978	407.2	488.3	362.0	409.8	489.8	367.9	436.3	570.5	343.9
1979	412.4	496.4	365.3	413.9	497.5	369.5	451.2	589.4	358.7
1980	417.7	505.5	367.7	419.2	505.0	373.0	466.7	614.0	366.0
1981	425.1	510.7	376.9	427.6	510.8	383.7	472.4	633.7	362.6
1982	424.3	510.9	376.1	427.6	512.2	383.3	465.1	621.9	359.2
1983	430.9	519.7	380.5	434.1	520.6	387.8	486.6	645.2	381.8
1984	439.6	525.1	392.1	443.2	527.1	399.2	487.1	643.4	384.6
1985	448.4	530.7	402.8	452.8	532.7	410.9	487.9	642.3	387.3
1986	451.0	537.9	401.9	455.5	542.4	408.6	493.0	642.6	396.0
1987	467.8	562.8	413.1	474.6	568.3	423.2	500.7	665.7	393.9
1988	463.5	557.9	408.9	469.8	564.4	417.4	503.4	656.7	404.1
1989	467.3	566.6	407.8	474.6	572.9	418.0	491.8	660.0	384.0
1990	481.2	591.8	414.9	488.0	598.1	424.2	520.0	697.9	407.1
1991	502.3	636.6	418.2	509.5	643.3	427.6	548.4	764.0	412.0
1992	509.8	657.1	414.2	515.6	661.5	422.8	566.9	806.3	411.9
1993	492.6	621.0	407.8	496.0	618.7	416.6	566.5	815.4	402.9
1994	482.5	588.5	412.7	486.1	585.9	422.0	555.0	778.7	407.2
1995	475.5	569.8	413.8	480.4	567.9	424.7	538.9	741.8	403.1
1996	477.3	570.1	416.7	482.5	570.5	426.6	536.3	721.5	413.6
1997	484.3	572.9	426.7	491.2	573.2	439.4	534.0	728.8	406.9
1998	485.7	569.5	431.8	493.9	572.4	444.8	528.2	711.0	410.4
1999	487.6	577.1	428.1	495.1	577.9	441.0	533.4	713.3	415.4
2000	481.9	574.5	418.6	492.0	577.6	434.4	519.5	701.2	397.5
2001	483.7	572.8	422.0	494.5	578.1	437.6	508.3	679.6	391.9
2002	478.9	563.5	420.6	487.7	567.6	433.1	522.7	680.4	416.3
2003	459.6	540.0	404.1	467.6	541.3	417.3	499.4	650.4	397.6
1975-2003	460.1	553.1	402.5	464.8	554.6	411.2	505.5	677.5	391.7

<sup>a</sup> SEER 9 areas (San Francisco, Connecticut, Detroit, Hawaii, Iowa, New Mexico, Seattle, Utah, and Atlanta). Rates are per 100,000 and are age-adjusted to the 2000 US Std Population (19 age groups - Census P25-1130).  
 - Statistic not shown. Rate based on less than 16 cases for the time interval.

Table II-3  
ALL SITES (Invasive)

AGE-ADJUSTED U.S. DEATH<sup>a</sup> RATES BY YEAR, RACE AND SEX

	<u>All Races</u>			<u>Whites</u>			<u>Blacks</u>		
	<u>Total</u>	<u>Males</u>	<u>Females</u>	<u>Total</u>	<u>Males</u>	<u>Females</u>	<u>Total</u>	<u>Males</u>	<u>Females</u>
<u>AGE-ADJUSTED RATES</u>									
<u>YEAR OF DEATH:</u>									
1975	199.1	258.4	160.0	196.3	254.0	159.0	235.5	320.5	174.2
1976	202.3	262.2	162.7	199.4	257.5	161.7	241.8	328.4	179.1
1977	203.0	264.2	162.9	199.7	258.8	161.6	246.4	337.9	181.6
1978	204.4	267.1	163.8	201.1	261.6	162.5	247.2	340.9	181.5
1979	204.5	268.7	163.1	201.2	263.2	161.7	249.0	344.7	182.7
1980	207.0	271.1	165.8	203.3	265.0	164.2	256.2	353.9	189.2
1981	206.4	269.8	165.9	202.6	263.3	164.6	256.8	358.6	187.5
1982	208.3	272.9	167.4	204.5	266.3	166.1	260.4	364.9	190.2
1983	209.2	274.1	168.3	205.2	267.2	166.7	263.8	369.3	193.2
1984	210.9	275.1	170.5	206.7	267.6	169.0	268.1	377.9	195.7
1985	211.3	275.7	171.0	207.3	268.2	169.6	268.1	377.8	196.3
1986	211.8	276.0	171.6	207.7	268.8	170.0	269.4	378.9	199.1
1987	211.9	276.3	171.5	207.8	269.0	169.9	271.1	383.2	199.9
1988	212.6	276.9	172.5	208.5	269.5	170.9	271.6	384.2	200.4
1989	214.3	278.5	174.3	210.0	270.2	172.9	275.9	395.3	200.9
1990	214.9	279.8	174.7	210.4	271.5	172.9	279.3	399.1	205.4
1991	215.1	279.1	175.3	210.6	271.2	173.4	279.0	395.9	207.4
1992	213.5	276.5	174.4	209.2	268.9	172.6	274.9	389.2	205.8
1993	213.4	275.9	174.6	209.2	267.9	172.8	277.1	394.8	206.3
1994	211.7	272.1	174.1	207.8	264.7	172.6	272.0	385.2	204.1
1995	209.9	268.5	173.4	206.1	261.5	171.7	269.5	379.0	204.5
1996	207.0	263.7	171.2	203.4	256.8	169.8	265.3	373.7	200.9
1997	203.6	258.1	169.0	199.9	251.6	167.3	262.1	363.2	202.5
1998	200.8	253.6	166.9	197.6	247.6	165.4	255.7	353.1	198.4
1999	200.7	252.8	167.2	197.8	247.1	165.9	253.8	349.2	197.5
2000	198.7	248.2	166.6	196.3	243.2	165.9	248.2	341.1	193.3
2001	195.9	244.1	164.3	193.6	239.4	163.5	244.2	332.6	192.0
2002	193.7	240.2	162.9	191.8	236.4	162.1	240.4	323.2	191.1
2003	190.1	234.1	160.5	188.3	230.6	159.7	234.5	311.4	188.2
1975-2003	206.4	265.3	168.7	203.0	259.1	167.4	260.0	361.7	195.7

<sup>a</sup> NCHS public use data file for the total US. Rates are per 100,000 and are age-adjusted to the 2000 US Std Population (19 age groups - Census P25-1130).

- Statistic not shown. Rate based on less than 16 cases for the time interval.

Table II-4  
ALL SITES (Invasive)

SEER INCIDENCE<sup>a</sup> AND U.S. DEATH<sup>b</sup> RATES, AGE-ADJUSTED AND AGE-SPECIFIC RATES, BY RACE AND SEX

	All Races			Whites			Blacks		
	Total	Males	Females	Total	Males	Females	Total	Males	Females
<u>SEER INCIDENCE</u>									
<u>AGE AT DIAGNOSIS</u>									
AGE-ADJUSTED RATES, 2000-2003									
All ages	471.3	558.1	412.0	478.4	558.3	424.6	504.4	666.4	395.4
Under 65	223.7	221.3	227.2	226.9	220.7	234.2	250.1	291.7	216.8
65 and over	2,183.2	2,886.7	1,689.4	2,217.2	2,892.0	1,740.5	2,262.4	3,256.2	1,630.0
All ages(IARC world std) <sup>c</sup>	319.3	365.5	285.5	324.7	365.9	294.9	346.3	448.7	272.7
AGE-SPECIFIC RATES, 2000-2003									
<1	23.2	23.0	23.3	24.3	24.5	24.2	16.9	14.5	19.3
1-4	20.5	22.3	18.7	21.9	23.8	19.9	13.4	13.5	13.2
5-9	11.2	11.9	10.5	12.0	12.7	11.2	8.3	8.7	7.8
10-14	12.5	13.0	11.9	13.1	13.7	12.4	9.8	10.4	9.1
15-19	21.0	22.8	19.2	22.9	24.9	20.7	13.2	14.0	12.3
20-24	32.8	31.4	34.2	35.7	34.5	37.0	21.4	18.1	24.7
25-29	52.1	44.3	60.4	56.0	48.0	64.7	38.8	32.3	44.8
30-34	80.1	61.3	99.4	83.9	64.9	104.1	68.4	49.8	85.5
35-39	124.6	89.0	160.7	127.6	91.5	165.2	118.9	86.0	148.8
40-44	206.6	145.6	267.3	209.5	146.9	273.3	209.3	166.8	247.7
45-49	340.7	272.2	407.4	341.9	269.0	414.7	382.1	362.7	399.1
50-54	551.2	529.3	572.1	553.7	521.0	585.8	661.9	765.7	573.5
55-59	884.6	964.1	809.7	888.9	946.5	833.5	1,070.5	1,416.9	782.6
60-64	1,302.2	1,555.3	1,071.3	1,323.1	1,548.9	1,113.3	1,515.3	2,093.4	1,050.2
65-69	1,801.4	2,297.2	1,377.1	1,840.7	2,304.7	1,435.1	1,991.5	2,861.6	1,328.7
70-74	2,179.8	2,872.1	1,629.4	2,225.6	2,886.3	1,689.8	2,288.0	3,323.7	1,569.1
75-79	2,451.5	3,269.3	1,879.1	2,488.4	3,270.3	1,938.1	2,484.8	3,604.0	1,791.1
80-84	2,460.0	3,261.9	1,962.4	2,476.8	3,243.7	2,001.3	2,450.0	3,504.8	1,880.1
85+	2,248.5	3,121.1	1,857.7	2,261.3	3,137.6	1,875.1	2,205.4	3,098.4	1,852.2
<u>U.S. MORTALITY</u>									
<u>AGE AT DEATH</u>									
AGE-ADJUSTED RATES, 2000-2003									
All ages	194.5	241.5	163.5	192.4	237.3	162.8	241.7	326.8	191.1
Under 65	64.2	69.0	59.8	62.3	66.4	58.4	90.3	104.5	78.9
65 and over	1,095.4	1,433.9	880.7	1,092.2	1,418.6	883.7	1,288.1	1,863.0	966.9
All ages(IARC world std) <sup>c</sup>	116.8	139.6	100.2	115.1	136.6	99.4	149.6	193.9	120.6
AGE-SPECIFIC RATES, 2000-2003									
<1	1.9	1.9	1.9	2.0	2.0	2.0	1.4	-	1.6
1-4	2.6	2.9	2.4	2.7	2.9	2.5	2.5	2.5	2.4
5-9	2.5	2.7	2.4	2.6	2.8	2.5	2.3	2.7	2.0
10-14	2.5	2.7	2.3	2.5	2.7	2.4	2.6	3.0	2.2
15-19	3.6	4.2	2.9	3.6	4.3	2.9	3.6	4.3	3.0
20-24	4.9	5.6	4.2	4.9	5.6	4.2	5.1	5.8	4.3
25-29	7.0	7.0	6.9	6.9	7.1	6.7	8.4	7.7	9.1
30-34	12.3	11.2	13.5	11.9	11.0	12.9	16.1	13.3	18.6
35-39	23.9	20.3	27.5	23.0	19.9	26.3	32.5	25.5	38.7
40-44	47.7	43.1	52.3	45.4	41.0	49.8	69.8	63.6	75.3
45-49	91.5	91.3	91.7	86.7	86.1	87.2	139.2	144.5	134.7
50-54	162.1	171.6	153.0	155.2	162.1	148.5	242.6	280.8	210.1
55-59	278.8	309.5	250.0	271.1	297.1	246.2	400.2	490.8	325.8
60-64	451.5	522.6	387.0	445.0	508.8	386.0	596.0	761.5	466.3
65-69	669.1	805.2	551.8	664.3	792.1	551.9	837.4	1,097.1	645.1
70-74	934.1	1,160.0	754.1	930.5	1,144.4	756.8	1,134.2	1,559.0	849.9
75-79	1,205.9	1,555.6	959.7	1,202.5	1,536.4	964.4	1,424.8	2,056.6	1,046.5
80-84	1,466.8	1,974.4	1,160.8	1,464.1	1,955.0	1,165.8	1,681.7	2,561.1	1,228.7
85+	1,748.2	2,550.1	1,407.2	1,749.1	2,542.5	1,411.7	1,908.2	3,037.4	1,478.1

<sup>a</sup> SEER 17 areas. Rates are per 100,000 and are age-adjusted to the 2000 US Std Population (19 age groups - Census P25-1130), unless noted.

<sup>b</sup> NCHS public use data file for the total US. Rates are per 100,000 and are age-adjusted to the 2000 US Std Population (19 age groups - Census P25-1130), unless noted.

<sup>c</sup> Rates are per 100,000 and are age-adjusted to the IARC world standard population.

- Statistic not shown. Rate based on less than 16 cases for the time interval.

Table II-5  
ALL SITES (Invasive)

SURVIVAL RATES, BY RACE, SEX, DIAGNOSIS YEAR AND AGE

	All Races			Whites			Blacks		
	Total	Males	Females	Total	Males	Females	Total	Males	Females
<u>5-YR RELATIVE SURVIVAL RATES</u>									
YEAR OF DIAGNOSIS:									
1960-1963 <sup>a</sup>	-	-	-	39	-	-	27	-	-
1970-1973 <sup>a</sup>	-	-	-	43	-	-	31	-	-
1975-1977 <sup>b</sup>	49.9	42.1	56.9	50.9	43.2	57.7	39.8	32.7	47.2
1978-1980 <sup>b</sup>	50.3	43.9	56.2	51.4	45.2	57.0	39.6	33.2	46.6
1981-1983 <sup>b</sup>	51.5	46.0	56.6	52.7	47.5	57.5	39.5	34.2	45.5
1984-1986 <sup>b</sup>	53.3	47.5	58.8	54.7	49.1	59.9	40.7	35.4	46.3
1987-1989 <sup>b</sup>	56.2	51.5	60.9	57.7	53.3	62.0	43.7	38.8	48.9
1990-1992 <sup>b</sup>	60.8	59.6	62.2	62.4	61.5	63.5	48.3	47.5	49.2
1993-1995 <sup>b</sup>	62.6	62.0	63.2	64.0	63.5	64.4	53.4	54.7	51.8
1996-2002 <sup>b</sup>	66.1 <sup>e</sup>	66.3 <sup>e</sup>	65.8 <sup>e</sup>	67.5 <sup>e</sup>	67.8 <sup>e</sup>	67.1 <sup>e</sup>	57.2 <sup>e</sup>	60.3 <sup>e</sup>	53.9 <sup>e</sup>
<u>5-YR PERIOD SURVIVAL RATES<sup>cd</sup></u>									
YEAR OF DIAGNOSIS:									
1996-2002	65.6	66.0	65.3	66.9	67.3	66.4	57.5	60.8	53.9
<u>5-YR RELATIVE SURVIVAL RATES, 1996-2002<sup>c</sup></u>									
AGE AT DIAGNOSIS:									
<45	76.6	70.5	80.6	78.9	73.5	82.6	62.0	53.5	67.6
45-54	70.0	63.0	75.4	71.9	65.1	77.1	58.1	54.7	61.5
55-64	67.2	67.1	67.4	68.7	68.5	69.0	59.6	63.6	53.5
65-74	63.7	67.6	58.5	64.7	68.5	59.9	57.5	65.7	45.8
75+	53.1	58.4	48.6	54.3	59.6	49.8	44.0	52.4	36.9
Under 65	70.4	66.6	73.9	72.2	68.6	75.5	59.7	58.9	60.5
65 and over	59.2	64.2	53.8	60.3	65.2	55.0	52.5	61.5	41.9

<sup>a</sup> Rates are based on End Results data from a series of hospital registries and one population-based registry.

<sup>b</sup> Rates are from the SEER 9 areas (San Francisco, Connecticut, Detroit, Hawaii, Iowa, New Mexico, Seattle, Utah, Atlanta).

Rates are based on follow-up of patients into 2003.

<sup>c</sup> Rates are from the SEER 17 areas (San Francisco, Connecticut, Detroit, Hawaii, Iowa, New Mexico, Seattle, Utah, Atlanta, San Jose-Monterey, Los Angeles, Alaska Native Registry, Rural Georgia, California excluding SF/SJM/LA, Kentucky, Louisiana and New Jersey). California excluding SF/SJM/LA, Kentucky, Louisiana, and New Jersey contribute cases for diagnosis years 2000-2002. The remaining 13 SEER Areas contribute cases for the entire period 1996-2002. Rates are based on follow-up of patients into 2003.

<sup>d</sup> Period survival provides a more up-to-date estimate of survival by piecing together the most recent conditional survival estimates from several cohorts. It is computed here using three calendar year blocks (2000-2002: 0-1 year survival), (1999-2001: 1-2 year survival), (1998-2000: 2-3 year survival), (1997-1999: 3-4 year survival), (1996-1998: 4-5 years survival).

<sup>e</sup> The difference in rates between 1975-1977 and 1996-2002 is statistically significant ( $p < .05$ ).

<sup>f</sup> The standard error of the survival rate is between 5 and 10 percentage points.

<sup>g</sup> The standard error of the survival rate is greater than 10 percentage points.

- Statistic could not be calculated due to fewer than 16 cases during the time period.

Table II-6  
 ALL SITES (Invasive)

SURVIVAL RATES<sup>a</sup>

By Year of Diagnosis

All Races, Males and Females

Year of Diagnosis

	1975- 1979	1980- 1984	1985	1986	1987	1988	1989	1990	1991	1992	1993	1994	1995	1996	1997	1998	1999	2000	2001	2002
Relative Survival Rates (SEER <sup>b</sup> )																				
1-year	69.9	71.6	73.0	73.5	74.2	74.2	74.7	75.7	77.3	77.9	77.3	77.1	77.2	77.6	78.3	78.6	79.3	79.6	80.1	80.2
2-year	60.3	62.1	63.7	64.2	65.3	65.4	66.2	67.3	69.2	70.4	70.1	69.7	70.0	70.8	71.5	72.1	72.9	73.4	74.1	
3-year	55.4	57.1	58.9	59.5	60.6	61.1	61.7	63.1	65.2	66.8	66.4	66.2	66.5	67.6	68.3	69.0	69.9	70.4		
4-year	52.2	53.8	55.6	56.5	57.7	58.3	58.9	60.4	62.7	64.5	64.1	63.8	64.4	65.5	66.3	67.1	68.1			
5-year	50.0	51.4	53.4	54.3	55.7	56.3	56.8	58.6	60.9	62.7	62.5	62.3	63.0	64.1	64.9	65.7				
6-year	48.3	49.6	51.8	52.7	54.0	54.7	55.3	57.1	59.5	61.4	61.4	61.2	61.9	63.1	63.9					
7-year	47.0	48.1	50.4	51.4	52.5	53.3	54.1	55.8	58.3	60.3	60.3	60.2	61.1	62.4						
8-year	45.9	46.9	49.4	50.4	51.5	52.2	53.0	54.9	57.3	59.4	59.4	59.6	60.5							
9-year	45.1	46.0	48.4	49.5	50.5	51.4	52.3	54.0	56.6	58.7	58.7	59.0								
10-year	44.2	45.2	47.6	48.8	49.9	50.7	51.6	53.3	56.0	58.1	58.1									
11-year	43.5	44.5	47.0	48.2	49.2	50.2	51.1	52.7	55.4	57.5										
12-year	43.0	44.0	46.5	47.7	48.7	49.5	50.5	52.2	54.9											
13-year	42.6	43.6	46.1	47.3	48.1	49.0	50.1	51.8												
14-year	42.3	43.2	45.7	46.9	47.8	48.7	49.8													
15-year	41.9	43.0	45.4	46.4	47.6	48.4														
16-year	41.7	42.6	45.1	46.2	47.4															
17-year	41.5	42.4	44.8	46.2																
18-year	41.4	42.3	44.7																	
19-year	41.4	42.2																		
20-year	41.4																			

<sup>a</sup> Survival rates are relative rates expressed as percents.

<sup>b</sup> Rates are from the SEER 9 areas (San Francisco, Connecticut, Detroit, Hawaii, Iowa, New Mexico, Seattle, Utah, and Atlanta).

Table II-7  
ALL SITES (Invasive)

SURVIVAL RATES<sup>a</sup>

By Year of Diagnosis

All Races, Males

Year of Diagnosis

	1975- 1979	1980- 1984	1985	1986	1987	1988	1989	1990	1991	1992	1993	1994	1995	1996	1997	1998	1999	2000	2001	2002
Relative Survival Rates (SEER <sup>b</sup> )																				
1-year	64.5	67.6	69.0	69.7	70.9	71.1	72.0	73.7	76.3	77.5	76.7	76.2	76.0	76.9	77.6	77.4	78.7	79.3	79.8	79.7
2-year	53.8	57.1	58.7	59.3	61.2	61.4	62.8	64.6	68.1	70.0	69.4	68.4	68.7	70.1	70.9	71.1	72.3	73.3	73.9	
3-year	48.5	51.9	53.6	54.3	56.1	56.5	58.0	60.3	64.2	66.7	65.9	65.1	65.4	67.0	68.0	68.1	69.5	70.6		
4-year	45.1	48.4	50.0	50.9	52.9	53.3	54.8	57.4	61.7	64.5	63.9	62.9	63.5	65.1	66.2	66.4	68.0			
5-year	42.7	45.8	47.6	48.7	50.7	51.2	52.6	55.5	59.8	62.9	62.3	61.6	62.2	63.9	65.0	65.4				
6-year	40.8	43.8	45.9	46.8	49.0	49.3	50.9	54.0	58.2	61.6	61.3	60.5	61.2	63.1	64.1					
7-year	39.3	42.2	44.4	45.4	47.2	47.6	49.4	52.4	57.0	60.4	60.2	59.6	60.5	62.5						
8-year	38.0	40.8	43.2	44.3	45.9	46.4	48.2	51.3	55.8	59.3	59.6	58.9	60.0							
9-year	36.9	39.8	42.1	43.1	44.8	45.4	47.2	50.4	55.0	58.6	58.7	58.3								
10-year	35.8	38.9	41.2	42.2	43.9	44.5	46.4	49.5	54.3	57.8	58.1									
11-year	34.9	38.1	40.5	41.6	43.2	44.0	45.7	48.7	53.6	57.2										
12-year	34.2	37.5	39.7	40.9	42.4	43.1	45.0	48.1	53.1											
13-year	33.6	37.0	39.3	40.4	41.9	42.4	44.3	47.7												
14-year	33.1	36.6	38.6	39.8	41.6	42.0	43.7													
15-year	32.7	36.3	38.3	39.3	41.2	41.5														
16-year	32.2	35.9	38.0	39.0	40.9															
17-year	31.9	35.6	37.7	39.0																
18-year	31.7	35.6	37.6																	
19-year	31.7	35.5																		
20-year	31.7																			

<sup>a</sup> Survival rates are relative rates expressed as percents.

<sup>b</sup> Rates are from the SEER 9 areas (San Francisco, Connecticut, Detroit, Hawaii, Iowa, New Mexico, Seattle, Utah, and Atlanta).

Table II-8  
 ALL SITES (Invasive)

SURVIVAL RATES<sup>a</sup>

By Year of Diagnosis

All Races, Females

Year of Diagnosis

	1975- 1979	1980- 1984	1985	1986	1987	1988	1989	1990	1991	1992	1993	1994	1995	1996	1997	1998	1999	2000	2001	2002
Relative Survival Rates (SEER <sup>b</sup> )																				
1-year	75.3	75.7	77.0	77.4	77.5	77.5	77.6	77.8	78.4	78.3	78.1	78.0	78.4	78.4	79.1	79.8	79.8	79.9	80.5	80.6
2-year	66.6	67.0	68.6	69.0	69.5	69.6	69.6	70.1	70.5	70.9	70.8	71.0	71.3	71.6	72.2	73.1	73.5	73.5	74.4	
3-year	61.9	62.1	64.0	64.6	65.1	65.6	65.5	66.0	66.3	66.9	66.9	67.3	67.7	68.1	68.7	69.8	70.2	70.3		
4-year	58.8	59.0	61.0	61.9	62.5	63.2	62.9	63.5	63.9	64.4	64.4	64.8	65.4	65.9	66.4	67.7	68.2			
5-year	56.7	56.7	58.8	59.7	60.4	61.2	61.0	61.8	62.1	62.5	62.7	63.2	63.8	64.2	64.9	66.0				
6-year	55.0	55.0	57.2	58.2	58.8	59.8	59.6	60.3	60.8	61.2	61.4	61.9	62.6	63.0	63.7					
7-year	53.7	53.5	55.9	56.9	57.5	58.5	58.5	59.2	59.7	60.1	60.3	60.8	61.6	62.4						
8-year	52.7	52.4	54.9	56.0	56.6	57.6	57.5	58.3	58.8	59.4	59.3	60.3	60.9							
9-year	51.8	51.4	53.8	55.2	55.7	56.8	57.0	57.5	58.1	58.9	58.7	59.7								
10-year	51.1	50.6	53.1	54.4	55.2	56.2	56.4	56.8	57.6	58.4	58.2									
11-year	50.4	49.9	52.5	53.9	54.5	55.6	55.9	56.3	57.2	57.8										
12-year	49.9	49.4	52.0	53.4	54.0	55.0	55.4	55.8	56.7											
13-year	49.5	48.9	51.6	53.0	53.3	54.5	55.1	55.4												
14-year	49.1	48.5	51.3	52.6	53.0	54.2	54.8													
15-year	48.7	48.2	50.9	52.1	52.7	54.0														
16-year	48.5	47.8	50.6	51.7	52.4															
17-year	48.3	47.5	50.1	51.6																
18-year	48.1	47.3	49.9																	
19-year	47.9	47.0																		
20-year	47.7																			

<sup>a</sup> Survival rates are relative rates expressed as percents.

<sup>b</sup> Rates are from the SEER 9 areas (San Francisco, Connecticut, Detroit, Hawaii, Iowa, New Mexico, Seattle, Utah, and Atlanta).



Table II-9  
ALL SITES (Invasive)

Percent Diagnosed With Cancer In 10, 20 and 30 Years and In Remaining Lifetime,  
Given Cancer Free At Current Age By Race and Sex

Lifetime Risk (Percent) of Being Diagnosed (17 SEER Areas) With Cancer and  
Lifetime Risk (Percent) of Dying (Total U.S.) From Cancer

2001-2003

Race/ Ethnicity	Current Age	Males				Females			
		+10 yrs	+20 yrs	+30 yrs	Eventually	+10 yrs	+20 yrs	+30 yrs	Eventually
All Races	0	0.17	0.35	0.71	45.31	0.15	0.31	0.78	37.86
	10	0.18	0.55	1.27	45.83	0.16	0.64	1.90	38.18
	20	0.37	1.09	3.09	45.97	0.48	1.74	4.79	38.17
	30	0.74	2.77	9.23	46.34	1.28	4.35	10.19	38.03
	40	2.08	8.69	22.54	46.67	3.14	9.09	18.29	37.49
	50	6.96	21.54	37.37	46.94	6.23	15.87	26.72	35.97
	60	16.58	34.60	43.67	45.49	10.57	22.48	30.60	32.63
White	0	0.18	0.38	0.77	45.28	0.16	0.33	0.83	38.88
	10	0.20	0.60	1.34	45.71	0.17	0.68	1.98	39.16
	20	0.40	1.15	3.14	45.83	0.51	1.81	4.92	39.14
	30	0.77	2.78	9.13	46.13	1.32	4.45	10.44	38.98
	40	2.06	8.55	22.42	46.39	3.19	9.30	18.86	38.40
	50	6.83	21.39	37.22	46.58	6.39	16.39	27.57	36.83
	60	16.50	34.42	43.29	45.02	10.96	23.22	31.41	33.37
Black	0	0.12	0.24	0.48	42.67	0.12	0.22	0.57	32.25
	10	0.13	0.37	1.01	43.75	0.11	0.47	1.56	32.87
	20	0.25	0.89	3.37	44.04	0.36	1.46	4.32	32.88
	30	0.66	3.21	11.94	44.98	1.11	4.01	9.51	32.89
	40	2.64	11.71	26.92	46.00	2.97	8.61	16.93	32.60
	50	9.87	26.42	40.28	47.18	6.01	14.86	24.04	31.53
	60	20.64	37.92	45.01	46.53	10.02	20.42	26.99	28.90
Asian/ Pacific Islander	0	0.15	0.28	0.51	39.99	0.12	0.25	0.57	32.65
	10	0.14	0.36	0.83	40.29	0.13	0.45	1.45	32.82
	20	0.23	0.69	1.96	40.33	0.32	1.32	3.88	32.79
	30	0.47	1.75	5.56	40.43	1.01	3.58	8.03	32.65
	40	1.29	5.14	14.48	40.42	2.61	7.12	13.52	32.05
	50	3.95	13.54	27.43	40.17	4.66	11.26	19.60	30.40
	60	10.27	25.16	35.74	38.81	7.02	15.89	23.85	27.38
Hispanic <sup>a</sup>	0	0.17	0.34	0.61	40.95	0.16	0.30	0.64	33.30
	10	0.17	0.45	0.96	41.34	0.14	0.49	1.49	33.51
	20	0.28	0.79	2.13	41.46	0.35	1.35	3.82	33.49
	30	0.52	1.87	6.32	41.74	1.01	3.50	7.97	33.35
	40	1.38	5.91	16.94	41.99	2.52	7.07	14.14	32.82
	50	4.72	16.21	30.84	42.29	4.71	12.04	21.01	31.39
	60	12.69	28.85	38.35	41.50	7.87	17.49	25.35	28.64

Race/Ethnicity	Lifetime Risk of Developing		Lifetime Risk of Dying	
	Males	Females	Males	Females
All Races	45.31%	37.86%	23.42%	19.82%
White	45.28%	38.88%	23.50%	20.04%
Black	42.67%	32.25%	23.89%	19.46%
Asian/Pacific Islander	39.99%	32.65%	20.68%	16.42%
Hispanic <sup>a</sup>	40.95%	33.30%	19.96%	15.67%

Devcan Version 6.1.0, April 2006, National Cancer Institute (<http://srab.cancer.gov/devcan/>).

Source: Incidence data are from the SEER 17 areas (San Francisco, Connecticut, Detroit, Hawaii, Iowa, New Mexico, Seattle, Utah, Atlanta, San Jose-Monterey, Los Angeles, Alaska Native Registry, Rural Georgia, California excluding SF/SJM/LA, Kentucky, Louisiana and New Jersey). Mortality data are from the NCHS public use data file for the total US.

<sup>a</sup> Hispanic is not mutually exclusive from Whites, Blacks, Asian/Pacific Islanders, and American Indians/Alaska Natives. Underlying incidence data for Hispanics are based on NHIA and exclude cases from Hawaii, Seattle, Alaska Native Registry and Kentucky. Underlying mortality data for Hispanics exclude deaths from Minnesota, New Hampshire and North Dakota.

Table II-10  
ALL SITES (Invasive)

SEER INCIDENCE AND U.S. MORTALITY  
AGE-ADJUSTED RATES AND TRENDS<sup>a</sup>  
By Race/Ethnicity and Sex

SEER Incidence

RACE/ETHNICITY	Rate 2000-2003 <sup>b</sup>			Trend 1994-2003 <sup>c</sup>		
	Rate per 100,000 persons			APC (%)		
	Total	Males	Females	Total	Males	Females
All Races	471.3	558.1	412.0	-0.4	-0.7*	-0.2
White	478.4	558.3	424.6	-0.3	-0.6*	-0.1
White Hispanic <sup>d</sup>	357.6	422.5	316.5	-0.8*	-1.1*	-0.5
White Non-Hispanic <sup>d</sup>	493.6	574.0	438.8	-0.2	-0.5*	0.0
Black	504.4	666.4	395.4	-0.9*	-1.5*	-0.4
Asian/Pacific Islander	315.6	361.8	285.4	-0.6*	-0.9*	-0.1
Amer Ind/Alaska Nat <sup>e</sup>	325.8	359.9	305.0	-1.4	-1.9	-0.8
Hispanic <sup>d</sup>	353.1	419.1	310.9	-0.7	-1.1*	-0.4

U.S. Mortality<sup>f</sup>

RACE/ETHNICITY	Rate 2000-2003			Trend 1994-2003		
	Rate per 100,000 persons			APC (%)		
	Total	Males	Females	Total	Males	Females
All Races	194.5	241.5	163.5	-1.1*	-1.6*	-0.9*
White	192.4	237.3	162.8	-1.0*	-1.4*	-0.8*
White Hispanic <sup>d</sup>	135.9	170.7	112.5	-0.9*	-1.5*	-0.5*
White Non-Hispanic <sup>d</sup>	196.3	241.7	166.3	-1.0*	-1.4*	-0.7*
Black	241.7	326.8	191.1	-1.6*	-2.3*	-1.0*
Asian/Pacific Islander	117.0	143.3	98.0	-1.8*	-2.1*	-1.2*
Amer Ind/Alaska Nat	127.0	150.0	111.1	-1.4*	-2.2*	-0.8
Hispanic <sup>d</sup>	131.0	165.1	108.1	-0.9*	-1.5*	-0.5*

- The APC is the Annual Percent Change over the time interval.
- Statistic not shown. Rate based on less than 16 cases for the time interval. Trend based on less than 10 cases for at least one year within the time interval.
- <sup>a</sup> Rates are age-adjusted to the 2000 US Std Population (19 age groups - Census P25-1130). Trends are based on rates age-adjusted to the 2000 US Std Population (19 age groups - Census P25-1130).
- <sup>b</sup> Incidence data used in calculating the rates are from the 17 SEER areas (San Francisco, Connecticut, Detroit, Hawaii, Iowa, New Mexico, Seattle, Utah, Atlanta, San Jose-Monterey, Los Angeles, Alaska Native Registry, Rural Georgia, California excluding SF/SJM/LA, Kentucky, Louisiana and New Jersey).
- <sup>c</sup> Incidence data used in calculating the trends are from the 13 SEER areas (San Francisco, Connecticut, Detroit, Hawaii, Iowa, New Mexico, Seattle, Utah, Atlanta, San Jose-Monterey, Los Angeles, Alaska Native Registry and Rural Georgia).
- <sup>d</sup> Hispanic and Non-Hispanic are not mutually exclusive from Whites, Blacks, Asian/Pacific Islanders, and American Indians/Alaska Natives. Incidence data for Hispanics and Non-Hispanics are based on NHIA and exclude cases from Hawaii, Seattle, Alaska Native Registry and Kentucky. The 2000-2003 Hispanic and Non-Hispanic death rates exclude deaths from Minnesota, New Hampshire and North Dakota. The 1994-2003 Hispanic and Non-Hispanic mortality trends exclude deaths from Maine, Minnesota, New Hampshire, North Dakota, and Oklahoma.
- <sup>e</sup> Incidence data for American Indians/Alaska Natives include cases from Connecticut, Detroit, Iowa, New Mexico, Seattle, Utah, Atlanta, and the Alaska Native Registry. Incidence rates are for diagnosis years 1999-2002. Incidence trends are for diagnosis years 1994-2002.
- <sup>f</sup> Mortality data are analyzed from a public use file provided by the National Center for Health Statistics (NCHS).
- \* The APC is significantly different from zero (p<.05).

Table II-11  
ALL SITES (Invasive)

AGE-ADJUSTED SEER INCIDENCE RATES<sup>a</sup>  
By Registry, Race/Ethnicity and Sex

	All Races			Whites		Blacks		Asian/Pacific Islanders		Hispanics <sup>b</sup>	
	Total	Males	Females	Males	Females	Males	Females	Males	Females	Males	Females
<u>SEER INCIDENCE RATES<sup>a</sup>, 2000-2003</u>											
REGISTRY											
17 SEER Areas <sup>c</sup>	471.3	558.1	412.0	558.3	424.6	666.4	395.4	361.8	285.4	419.1	310.9
13 SEER Areas <sup>c</sup>	463.3	546.9	406.2	551.0	422.1	665.1	393.4	375.3	295.7	409.8	301.4
11 SEER Areas <sup>c</sup>	463.3	546.9	406.3	551.1	422.2	665.4	394.6	375.3	295.6	409.8	301.5
9 SEER Areas <sup>c</sup>	475.8	562.4	416.1	565.8	430.4	677.5	400.8	390.4	299.9	419.8	312.3
San Francisco-Oakland	448.0	520.8	398.1	537.6	427.5	592.3	390.4	372.6	285.7	421.5	312.6
Connecticut	507.4	597.9	446.2	596.1	452.8	614.1	380.0	247.2	233.2	514.4	384.3
Metropolitan Detroit	533.6	662.8	446.8	639.6	457.5	768.4	429.8	340.3	205.6	421.4	342.5
Hawaii	414.6	479.8	370.3	575.1	438.7	515.1	212.1	432.8	343.0	-	-
Iowa	474.1	552.3	423.0	544.1	419.3	597.3	395.3	378.6	235.9	342.6	267.8
New Mexico	409.2	482.3	354.0	497.9	368.0	472.4	270.4	295.5	210.4	412.4	290.5
Seattle-Puget Sound	501.3	575.6	450.0	588.0	466.3	633.7	382.0	375.1	292.1	-	-
Utah	407.2	486.8	346.6	492.5	351.0	493.3	335.1	293.0	235.2	407.4	303.5
Metropolitan Atlanta	468.5	566.7	404.6	547.7	421.0	661.1	387.4	291.4	239.9	320.5	327.1
San Jose-Monterey	426.5	494.9	381.3	523.8	409.0	560.6	302.8	325.9	266.3	417.3	301.3
Los Angeles	433.9	511.1	382.5	506.6	399.0	641.1	382.3	360.9	296.8	402.4	294.6
Rural Georgia	440.0	570.2	347.3	534.2	363.6	647.1	320.3	-	-	-	-
California exclud. SF/SJM/LA	451.0	521.5	401.8	523.1	413.1	596.6	365.8	326.3	263.6	405.0	317.5
Kentucky	508.5	614.5	439.4	605.7	436.4	716.2	460.2	383.6	270.1	-	-
Louisiana	487.3	614.5	400.7	596.6	403.9	677.1	398.5	347.6	293.7	451.8	284.8
New Jersey	517.1	622.3	447.3	617.1	459.0	691.1	403.1	321.7	249.3	525.4	345.7

<sup>a</sup> Rates are per 100,000 and are age-adjusted to the 2000 US Std Population (19 age groups - Census P25-1130)

<sup>b</sup> Hispanic is not mutually exclusive from Whites, Blacks, Asian/Pacific Islanders, and American Indians/Alaska Natives.

Incidence data for Hispanics are based on NHIA and exclude cases from Hawaii, Seattle, Alaska Native Registry and Kentucky.

<sup>c</sup> The SEER 9 areas are San Francisco, Connecticut, Detroit, Hawaii, Iowa, New Mexico, Seattle, Utah and Atlanta.

The SEER 11 areas comprise the SEER 9 areas plus San Jose-Monterey and Los Angeles.

The SEER 13 areas comprise the SEER 11 areas plus the Alaska Native Registry and Rural Georgia.

The SEER 17 areas comprise the SEER 13 areas plus California excluding SF/SJM/LA, Kentucky, Louisiana and New Jersey

- Statistic not shown. Rate based on less than 16 cases for the time interval.

Table II-12  
ALL SITES (Invasive)

AGE-ADJUSTED SEER DEATH RATES<sup>a</sup>  
By Registry, Race/Ethnicity and Sex

	All Races			Whites		Blacks		Asian/Pacific Islanders		Hispanics <sup>b</sup>	
	Total	Males	Females	Males	Females	Males	Females	Males	Females	Males	Females
<u>SEER DEATH RATES<sup>a</sup>, 2000-2003</u>											
REGISTRY											
17 SEER Areas <sup>c</sup>	188.3	229.8	161.0	229.2	162.8	320.3	196.1	153.6	103.3	160.1	109.8
13 SEER Areas <sup>c</sup>	178.9	217.6	153.6	217.5	155.9	303.7	192.1	159.1	104.3	164.0	111.7
11 SEER Areas <sup>c</sup>	178.7	217.2	153.5	217.4	155.9	302.7	192.6	159.0	104.4	164.0	111.7
9 SEER Areas <sup>c</sup>	183.1	223.9	156.3	223.2	157.8	304.5	192.6	165.0	106.2	178.2	114.4
San Francisco-Oakland	176.6	210.9	154.2	213.6	162.7	317.7	203.4	159.4	104.6	156.5	104.9
Connecticut	185.5	226.2	159.9	225.4	159.9	276.8	172.9	70.9	82.9	157.6	88.4
Metropolitan Detroit	205.2	253.3	175.3	242.2	169.8	310.6	199.9	113.7	78.5	169.0	94.4
Hawaii	152.1	192.1	122.0	226.5	146.3	148.2	111.2	181.8	114.7	377.8	203.2
Iowa	188.6	236.0	157.7	235.2	157.6	349.7	208.2	186.0	103.6	137.6	92.5
New Mexico	170.5	210.8	141.7	212.8	144.8	288.7	131.7	161.2	99.1	197.6	132.0
Seattle-Puget Sound	190.4	228.0	164.7	230.2	168.0	289.7	193.1	169.0	112.8	138.2	107.8
Utah	146.1	179.9	122.3	180.1	122.5	254.0	136.9	164.3	93.5	159.9	90.6
Metropolitan Atlanta	187.7	234.0	160.7	213.5	151.3	312.7	188.7	130.0	83.2	114.4	74.9
San Jose-Monterey	155.2	181.5	138.6	189.9	148.7	275.4	150.7	137.5	93.5	142.3	106.4
Los Angeles	170.5	204.6	148.4	203.9	151.2	299.9	195.1	154.1	104.2	156.3	110.2
Rural Georgia	204.7	281.5	153.2	237.6	144.7	378.8	169.1	-	-	-	-
California exclud. SF/SJM/LA	183.3	218.6	159.2	222.4	163.0	289.3	186.7	147.1	106.8	156.3	111.1
Kentucky	227.5	297.3	182.4	294.2	180.5	372.7	224.0	182.0	117.3	178.4	167.8
Louisiana	225.2	293.3	181.1	270.9	171.6	374.1	208.4	142.8	118.4	151.0	92.3
New Jersey	199.8	241.2	174.1	238.2	175.2	320.4	194.0	110.9	76.2	151.1	93.2
Total U.S.	194.5	241.5	163.5	237.3	162.8	326.8	191.1	143.3	98.0	165.1	108.1

<sup>a</sup> NCHS public use data file for the total US. Rates are per 100,000 and are age-adjusted to the 2000 US Std Population (19 age groups - Census P25-1130).

<sup>b</sup> Hispanic is not mutually exclusive from Whites, Blacks, Asian/Pacific Islanders, and American Indians/Alaska Natives. The 2000-2003 Hispanic death rates do not include deaths from Minnesota, New Hampshire and North Dakota.

<sup>c</sup> The SEER 9 areas are San Francisco, Connecticut, Detroit, Hawaii, Iowa, New Mexico, Seattle, Utah and Atlanta.

The SEER 11 areas comprise the SEER 9 areas plus San Jose-Monterey and Los Angeles.

The SEER 13 areas comprise the SEER 11 areas plus the Alaska Native Registry and Rural Georgia.

The SEER 17 areas comprise the SEER 13 areas plus California excluding SF/SJM/LA, Kentucky, Louisiana and New Jersey

- Statistic not shown. Rate based on less than 16 cases for the time interval.

Table II-13  
ALL SITES (Invasive)AVERAGE ANNUAL AGE-ADJUSTED CANCER DEATH<sup>a</sup> RATES BY STATE, ALL RACES, 2000-2003

## Males and Females

State	Rate	SE	Rank	PD	State	Rate	SE	Rank	PD
TOTAL U.S.	194.5	0.13							
High Five States									
Kentucky	227.5 <sup>bc</sup>	1.18	(01)	17.0					
District of Columbia	227.5 <sup>bc</sup>	3.20	(02)	17.0					
Louisiana	225.2 <sup>bc</sup>	1.16	(03)	15.8					
Mississippi	217.5 <sup>bc</sup>	1.40	(04)	11.8					
West Virginia	217.1 <sup>bc</sup>	1.59	(05)	11.6					
Low Five States									
Arizona	173.7 <sup>bc</sup>	0.90	(47)	-10.7					
Colorado	171.2 <sup>bc</sup>	1.09	(48)	-12.0					
New Mexico	170.5 <sup>bc</sup>	1.56	(49)	-12.3					
Hawaii	152.1 <sup>bc</sup>	1.70	(50)	-21.8					
Utah	146.1 <sup>bc</sup>	1.51	(51)	-24.9					
Alabama	210.7 <sup>bc</sup>	1.07	(07)	8.3	Montana	190.8	2.20	(32)	-1.9
Alaska	195.6	3.99	(28)	0.6	Nebraska	183.6 <sup>bc</sup>	1.59	(43)	-5.6
Arizona	173.7 <sup>bc</sup>	0.90	(47)	-10.7	Nevada	205.9 <sup>bc</sup>	1.68	(13)	5.9
Arkansas	209.4 <sup>bc</sup>	1.34	(10)	7.7	New Hampshire	197.2	1.99	(27)	1.4
California	177.2 <sup>bc</sup>	0.38	(45)	-8.9	New Jersey	199.8 <sup>c</sup>	0.75	(23)	2.7
Colorado	171.2 <sup>bc</sup>	1.09	(48)	-12.0	New Mexico	170.5 <sup>bc</sup>	1.56	(49)	-12.3
Connecticut	185.5 <sup>c</sup>	1.11	(39)	-4.6	New York	185.1 <sup>c</sup>	0.48	(41)	-4.8
Delaware	203.9 <sup>c</sup>	2.49	(16)	4.8	North Carolina	200.8 <sup>c</sup>	0.79	(22)	3.2
District of Columbia	227.5 <sup>bc</sup>	3.20	(02)	17.0	North Dakota	180.8 <sup>bc</sup>	2.50	(44)	-7.0
Florida	185.3 <sup>c</sup>	0.47	(40)	-4.7	Ohio	207.5 <sup>bc</sup>	0.66	(11)	6.7
Georgia	202.1 <sup>c</sup>	0.87	(19)	3.9	Oklahoma	204.8 <sup>bc</sup>	1.19	(14)	5.3
Hawaii	152.1 <sup>bc</sup>	1.70	(50)	-21.8	Oregon	195.6	1.16	(29)	0.6
Idaho	176.2 <sup>bc</sup>	1.90	(46)	-9.4	Pennsylvania	201.3 <sup>c</sup>	0.58	(20)	3.5
Illinois	203.4 <sup>c</sup>	0.65	(17)	4.6	Rhode Island	198.0	2.04	(26)	1.8
Indiana	210.5 <sup>bc</sup>	0.93	(08)	8.2	South Carolina	207.1 <sup>bc</sup>	1.14	(12)	6.5
Iowa	188.6 <sup>c</sup>	1.18	(34)	-3.0	South Dakota	187.1	2.36	(37)	-3.8
Kansas	188.3 <sup>c</sup>	1.29	(35)	-3.2	Tennessee	214.9 <sup>bc</sup>	0.97	(06)	10.5
Kentucky	227.5 <sup>bc</sup>	1.18	(01)	17.0	Texas	191.9 <sup>c</sup>	0.53	(31)	-1.3
Louisiana	225.2 <sup>bc</sup>	1.16	(03)	15.8	Utah	146.1 <sup>bc</sup>	1.51	(51)	-24.9
Maine	209.5 <sup>bc</sup>	1.88	(09)	7.7	Vermont	190.0	2.71	(33)	-2.3
Maryland	202.3 <sup>c</sup>	1.00	(18)	4.0	Virginia	201.3 <sup>c</sup>	0.87	(21)	3.5
Massachusetts	199.6 <sup>c</sup>	0.85	(24)	2.6	Washington	192.0	0.93	(30)	-1.3
Michigan	198.3 <sup>c</sup>	0.71	(25)	2.0	West Virginia	217.1 <sup>bc</sup>	1.59	(05)	11.6
Minnesota	184.8 <sup>bc</sup>	0.97	(42)	-5.0	Wisconsin	188.2 <sup>c</sup>	0.91	(36)	-3.2
Mississippi	217.5 <sup>bc</sup>	1.40	(04)	11.8	Wyoming	186.0	3.12	(38)	-4.4
Missouri	204.4 <sup>bc</sup>	0.92	(15)	5.1					

<sup>a</sup> NCHS public use data file. Rates are per 100,000 and are age-adjusted to the 2000 US Std Population (19 age groups - Census P25-1130).

<sup>b</sup> Absolute percent difference between state rate and total U.S. rate is 5% or more.

<sup>c</sup> Difference between state rate and total U.S. rate is statistically significant (p<=.0002).

SE Standard error of the rate.

PD Percent difference between state rate and total U.S. rate.

Table II-14  
ALL SITES (Invasive)AVERAGE ANNUAL AGE-ADJUSTED CANCER DEATH<sup>a</sup> RATES BY STATE, ALL RACES, 2000-2003

## Males

State	Rate	SE	Rank	PD	State	Rate	SE	Rank	PD
TOTAL U.S.	241.5	0.23							
High Five States									
Kentucky	297.3 <sup>bc</sup>	2.16	(01)	23.1					
District of Columbia	296.4 <sup>bc</sup>	5.89	(02)	22.7					
Mississippi	294.6 <sup>bc</sup>	2.63	(03)	22.0					
Louisiana	293.3 <sup>bc</sup>	2.12	(04)	21.4					
Alabama	282.1 <sup>bc</sup>	1.99	(05)	16.8					
Low Five States									
New Mexico	210.8 <sup>bc</sup>	2.68	(47)	-12.7					
Arizona	209.7 <sup>bc</sup>	1.51	(48)	-13.2					
Colorado	207.5 <sup>bc</sup>	1.91	(49)	-14.1					
Hawaii	192.1 <sup>bc</sup>	2.87	(50)	-20.5					
Utah	179.9 <sup>bc</sup>	2.57	(51)	-25.5					
Alabama	282.1 <sup>bc</sup>	1.99	(05)	16.8	Montana	231.2	3.70	(36)	-4.3
Alaska	239.4	7.10	(29)	-0.9	Nebraska	225.6 <sup>bc</sup>	2.72	(42)	-6.6
Arizona	209.7 <sup>bc</sup>	1.51	(48)	-13.2	Nevada	244.9	2.81	(25)	1.4
Arkansas	273.5 <sup>bc</sup>	2.40	(08)	13.3	New Hampshire	243.2	3.47	(26)	0.7
California	211.5 <sup>bc</sup>	0.65	(46)	-12.4	New Jersey	241.2	1.30	(28)	-0.1
Colorado	207.5 <sup>bc</sup>	1.91	(49)	-14.1	New Mexico	210.8 <sup>bc</sup>	2.68	(47)	-12.7
Connecticut	226.2 <sup>bc</sup>	1.91	(41)	-6.3	New York	224.9 <sup>bc</sup>	0.85	(43)	-6.9
Delaware	251.0	4.33	(19)	3.9	North Carolina	261.3 <sup>bc</sup>	1.46	(12)	8.2
District of Columbia	296.4 <sup>bc</sup>	5.89	(02)	22.7	North Dakota	228.1 <sup>b</sup>	4.26	(38)	-5.5
Florida	227.9 <sup>bc</sup>	0.79	(40)	-5.6	Ohio	259.5 <sup>bc</sup>	1.16	(13)	7.5
Georgia	262.1 <sup>bc</sup>	1.62	(11)	8.5	Oklahoma	259.1 <sup>bc</sup>	2.10	(14)	7.3
Hawaii	192.1 <sup>bc</sup>	2.87	(50)	-20.5	Oregon	233.3 <sup>c</sup>	1.94	(33)	-3.4
Idaho	213.5 <sup>bc</sup>	3.18	(45)	-11.6	Pennsylvania	250.8 <sup>c</sup>	1.02	(20)	3.9
Illinois	254.1 <sup>bc</sup>	1.14	(17)	5.2	Rhode Island	245.3	3.57	(24)	1.6
Indiana	265.5 <sup>bc</sup>	1.65	(10)	9.9	South Carolina	275.2 <sup>bc</sup>	2.11	(07)	14.0
Iowa	236.0	2.05	(30)	-2.3	South Dakota	233.1	4.02	(34)	-3.5
Kansas	233.4 <sup>c</sup>	2.23	(32)	-3.4	Tennessee	280.5 <sup>bc</sup>	1.77	(06)	16.1
Kentucky	297.3 <sup>bc</sup>	2.16	(01)	23.1	Texas	241.5	0.94	(27)	0.0
Louisiana	293.3 <sup>bc</sup>	2.12	(04)	21.4	Utah	179.9 <sup>bc</sup>	2.57	(51)	-25.5
Maine	258.3 <sup>bc</sup>	3.27	(15)	7.0	Vermont	232.4	4.70	(35)	-3.8
Maryland	249.2 <sup>c</sup>	1.76	(21)	3.2	Virginia	253.2 <sup>c</sup>	1.56	(18)	4.8
Massachusetts	245.7	1.49	(22)	1.7	Washington	229.6 <sup>c</sup>	1.56	(37)	-4.9
Michigan	245.4	1.23	(23)	1.6	West Virginia	269.8 <sup>bc</sup>	2.79	(09)	11.7
Minnesota	228.0 <sup>bc</sup>	1.68	(39)	-5.6	Wisconsin	234.2 <sup>c</sup>	1.58	(31)	-3.0
Mississippi	294.6 <sup>bc</sup>	2.63	(03)	22.0	Wyoming	223.7 <sup>b</sup>	5.31	(44)	-7.4
Missouri	255.2 <sup>bc</sup>	1.62	(16)	5.7					

<sup>a</sup> NCHS public use data file. Rates are per 100,000 and are age-adjusted to the 2000 US Std Population (19 age groups - Census P25-1130).

<sup>b</sup> Absolute percent difference between state rate and total U.S. rate is 5% or more.

<sup>c</sup> Difference between state rate and total U.S. rate is statistically significant ( $p \leq .0002$ ).

SE Standard error of the rate.

PD Percent difference between state rate and total U.S. rate.

Table II-15  
ALL SITES (Invasive)AVERAGE ANNUAL AGE-ADJUSTED CANCER DEATH<sup>a</sup> RATES BY STATE, ALL RACES, 2000-2003

## Females

State	Rate	SE	Rank	PD	State	Rate	SE	Rank	PD
TOTAL U.S.	163.5	0.16							
High Five States									
District of Columbia	184.6 <sup>bc</sup>	3.75	(01)	12.9					
Kentucky	182.4 <sup>bc</sup>	1.39	(02)	11.6					
West Virginia	182.1 <sup>bc</sup>	1.94	(03)	11.4					
Louisiana	181.1 <sup>bc</sup>	1.37	(04)	10.8					
Maine	177.2 <sup>bc</sup>	2.30	(05)	8.4					
Low Five States									
Colorado	148.2 <sup>bc</sup>	1.35	(47)	-9.4					
Arizona	147.3 <sup>bc</sup>	1.12	(48)	-9.9					
New Mexico	141.7 <sup>bc</sup>	1.90	(49)	-13.3					
Utah	122.3 <sup>bc</sup>	1.85	(50)	-25.2					
Hawaii	122.0 <sup>bc</sup>	2.06	(51)	-25.4					
Alabama	165.2	1.24	(27)	1.0	Montana	162.8	2.74	(30)	-0.4
Alaska	165.3	4.85	(26)	1.1	Nebraska	155.8 <sup>c</sup>	1.96	(41)	-4.7
Arizona	147.3 <sup>bc</sup>	1.12	(48)	-9.9	Nevada	176.1 <sup>bc</sup>	2.09	(06)	7.7
Arkansas	166.7	1.59	(24)	2.0	New Hampshire	166.8	2.44	(23)	2.0
California	154.3 <sup>bc</sup>	0.47	(43)	-5.6	New Jersey	174.1 <sup>bc</sup>	0.92	(08)	6.5
Colorado	148.2 <sup>bc</sup>	1.35	(47)	-9.4	New Mexico	141.7 <sup>bc</sup>	1.90	(49)	-13.3
Connecticut	159.9	1.36	(35)	-2.2	New York	160.7 <sup>c</sup>	0.59	(33)	-1.7
Delaware	172.1 <sup>b</sup>	3.04	(11)	5.3	North Carolina	162.6	0.94	(31)	-0.6
District of Columbia	184.6 <sup>bc</sup>	3.75	(01)	12.9	North Dakota	148.9 <sup>bc</sup>	3.08	(46)	-8.9
Florida	153.6 <sup>bc</sup>	0.58	(44)	-6.1	Ohio	174.0 <sup>bc</sup>	0.80	(09)	6.4
Georgia	164.8	1.02	(28)	0.8	Oklahoma	168.8 <sup>c</sup>	1.44	(19)	3.2
Hawaii	122.0 <sup>bc</sup>	2.06	(51)	-25.4	Oregon	170.2 <sup>c</sup>	1.46	(16)	4.1
Idaho	150.2 <sup>bc</sup>	2.37	(45)	-8.1	Pennsylvania	170.0 <sup>c</sup>	0.72	(17)	4.0
Illinois	171.6 <sup>bc</sup>	0.78	(13)	5.0	Rhode Island	168.8	2.51	(18)	3.2
Indiana	175.4 <sup>bc</sup>	1.12	(07)	7.3	South Carolina	162.9	1.33	(29)	-0.4
Iowa	157.7 <sup>c</sup>	1.46	(39)	-3.5	South Dakota	155.7	2.92	(42)	-4.8
Kansas	159.0	1.60	(36)	-2.8	Tennessee	172.4 <sup>bc</sup>	1.14	(10)	5.4
Kentucky	182.4 <sup>bc</sup>	1.39	(02)	11.6	Texas	158.6 <sup>c</sup>	0.63	(37)	-3.0
Louisiana	181.1 <sup>bc</sup>	1.37	(04)	10.8	Utah	122.3 <sup>bc</sup>	1.85	(50)	-25.2
Maine	177.2 <sup>bc</sup>	2.30	(05)	8.4	Vermont	162.1	3.34	(32)	-0.9
Maryland	171.7 <sup>bc</sup>	1.21	(12)	5.0	Virginia	168.2 <sup>c</sup>	1.04	(21)	2.9
Massachusetts	171.0 <sup>c</sup>	1.04	(15)	4.6	Washington	166.4	1.15	(25)	1.8
Michigan	167.7 <sup>c</sup>	0.86	(22)	2.6	West Virginia	182.1 <sup>bc</sup>	1.94	(03)	11.4
Minnesota	157.1 <sup>c</sup>	1.20	(40)	-3.9	Wisconsin	158.5 <sup>c</sup>	1.12	(38)	-3.1
Mississippi	168.5	1.63	(20)	3.1	Wyoming	160.3	3.89	(34)	-2.0
Missouri	171.1 <sup>c</sup>	1.12	(14)	4.6					

<sup>a</sup> NCHS public use data file. Rates are per 100,000 and are age-adjusted to the 2000 US Std Population (19 age groups - Census P25-1130).

<sup>b</sup> Absolute percent difference between state rate and total U.S. rate is 5% or more.

<sup>c</sup> Difference between state rate and total U.S. rate is statistically significant (p<=.0002).

SE Standard error of the rate.

PD Percent difference between state rate and total U.S. rate.

Table II-16  
ALL SITES (Invasive)Estimated United States Cancer Prevalence Counts<sup>a</sup> on January 1, 2003  
By Race/Ethnicity, Sex and Years Since Diagnosis

Years Since Diagnosis	0 to <5	5 to <10	10 to <15	15 to <20	20 to <25	0 to <13 <sup>e</sup>	0 to <28 <sup>e</sup>	>=28 <sup>g</sup>	Complete <sup>h</sup>
<b>Race/Sex</b>									
All Races <sup>b</sup>	3,962,252	2,511,031	1,605,669	924,744	564,549	7,559,653	9,822,273	673,712	10,495,985
Males	2,012,274	1,244,498	717,207	332,858	179,942	3,770,369	4,554,140	138,242	4,692,382
Females	1,949,978	1,266,533	888,462	591,886	384,607	3,789,284	5,268,133	535,470	5,803,603
White <sup>b</sup>	3,442,564	2,213,728	1,450,941	842,073	516,600	6,635,621	8,698,301	596,996	9,295,297
Males	1,736,715	1,087,998	650,645	304,446	166,160	3,288,860	4,008,076	127,969	4,136,045
Females	1,705,849	1,125,730	800,296	537,627	350,440	3,346,761	4,690,225	469,027	5,159,252
Black <sup>b</sup>	361,605	208,112	107,160	55,249	32,825	643,940	779,028	37,221	816,249
Males	196,730	114,039	47,712	18,925	9,172	346,414	389,648	4,256	393,904
Females	164,875	94,073	59,448	36,324	23,653	297,526	389,380	32,965	422,345
Asian/Pacific Islander <sup>c</sup>	89,637	48,904	+	+	+	157,208	+	+	+
Males	39,159	20,104	+	+	+	66,122	+	+	+
Females	50,478	28,800	+	+	+	91,086	+	+	+
Hispanic <sup>d</sup>	197,915	110,621	+	+	+	354,861	+	+	+
Males	96,036	52,006	+	+	+	167,076	+	+	+
Females	101,879	58,615	+	+	+	187,785	+	+	+

Estimated prevalence percent<sup>a</sup> on January 1, 2003, of the SEER 11 population diagnosed in the previous 10 years  
By Age at Prevalence, Race/Ethnicity and Sex

Age at Prevalence	Age Specific (Crude)										Age-Adjusted <sup>f</sup>
	All Ages	0-9	10-19	20-29	30-39	40-49	50-59	60-69	70-79	80+	All Ages
<b>Race/Sex</b>											
All Races <sup>c</sup>	1.9814%	0.0768%	0.1062%	0.2104%	0.5283%	1.2572%	3.0482%	6.6866%	10.6455%	10.0716%	2.1199%
Males	1.9956%	0.0805%	0.1135%	0.1943%	0.4104%	0.8423%	2.5543%	7.7010%	14.6841%	14.4892%	2.4448%
Females	1.9676%	0.0729%	0.0985%	0.2273%	0.6497%	1.6678%	3.5165%	5.7819%	7.6049%	7.6709%	1.9260%
White <sup>c</sup>	2.1570%	0.0830%	0.1160%	0.2329%	0.5747%	1.3185%	3.1557%	6.9973%	11.0680%	10.2418%	2.2061%
Males	2.1418%	0.0868%	0.1238%	0.2155%	0.4544%	0.8883%	2.6042%	7.8891%	14.9232%	14.4624%	2.4951%
Females	2.1721%	0.0790%	0.1078%	0.2517%	0.7036%	1.7581%	3.6939%	6.1814%	8.1122%	7.9806%	2.0416%
Black <sup>c</sup>	1.4627%	0.0494%	0.0718%	0.1362%	0.3876%	1.0606%	3.0732%	7.0856%	10.6798%	8.7713%	2.0473%
Males	1.6751%	0.0478%	0.0767%	0.1203%	0.2747%	0.7684%	3.2879%	10.0411%	17.5713%	14.6300%	2.8295%
Females	1.2704%	0.0512%	0.0668%	0.1510%	0.4875%	1.3167%	2.8952%	4.7686%	6.1511%	5.9829%	1.5501%
Asian/Pacific Islander <sup>c</sup>	1.2518%	0.0626%	0.0804%	0.1312%	0.3326%	0.9321%	2.0757%	3.8570%	6.7205%	7.6464%	1.3969%
Males	1.1453%	0.0694%	0.0867%	0.1168%	0.2069%	0.4809%	1.2944%	3.8179%	9.2331%	10.9872%	1.4822%
Females	1.3516%	0.0555%	0.0736%	0.1455%	0.4515%	1.3396%	2.7596%	3.8896%	4.9006%	5.3938%	1.3718%
Hispanic <sup>d</sup>	0.7866%	0.0716%	0.0954%	0.1401%	0.3580%	0.8862%	2.0074%	4.3784%	7.5976%	7.2520%	1.4755%
Males	0.7218%	0.0740%	0.1034%	0.1292%	0.2591%	0.4908%	1.4776%	5.0627%	11.1673%	11.1041%	1.7353%
Females	0.8547%	0.0692%	0.0869%	0.1529%	0.4705%	1.2922%	2.4962%	3.8135%	5.0495%	5.0865%	1.3425%

- <sup>a</sup> US 2003 cancer prevalence counts are based on 2003 cancer prevalence proportions from the SEER registries and 1/1/2003 US population estimates based on the average of 2002 and 2003 population estimates from the US Bureau of the Census. Prevalence was calculated using the First Malignant Primary Only for a person.
- <sup>b c d</sup> Statistics based on (b) SEER 9 Areas (c) SEER 11 Areas and Rural Georgia (d) NHIA for Hispanic for SEER 11 Areas and Rural Georgia excluding Hawaii and Seattle.
- <sup>e</sup> Maximum limited-duration prevalence: 28 years for 1975-2003 SEER 9 data; 13 years for 1990-2003 SEER 11 data (used to calculate prevalence for Hispanics and Asian Pacific Islanders).
- <sup>f</sup> Percentages are age-adjusted to the 2000 US standard population by 5-year age groups.
- <sup>g h</sup> (g) Cases diagnosed more than 28 years ago were estimated using the completeness index method (Capocaccia et. al. 1997, Merrill et. al. 2000). (h) Complete prevalence is obtained by summing 0 to <28 and >=28.
- Statistic not shown. Statistic based on fewer than 5 cases estimated alive in SEER for the time interval.
- + Not available.



# SEER Incidence, Delay Adjusted Incidence and US Death Rates+ All Cancer Sites, by Race and Sex

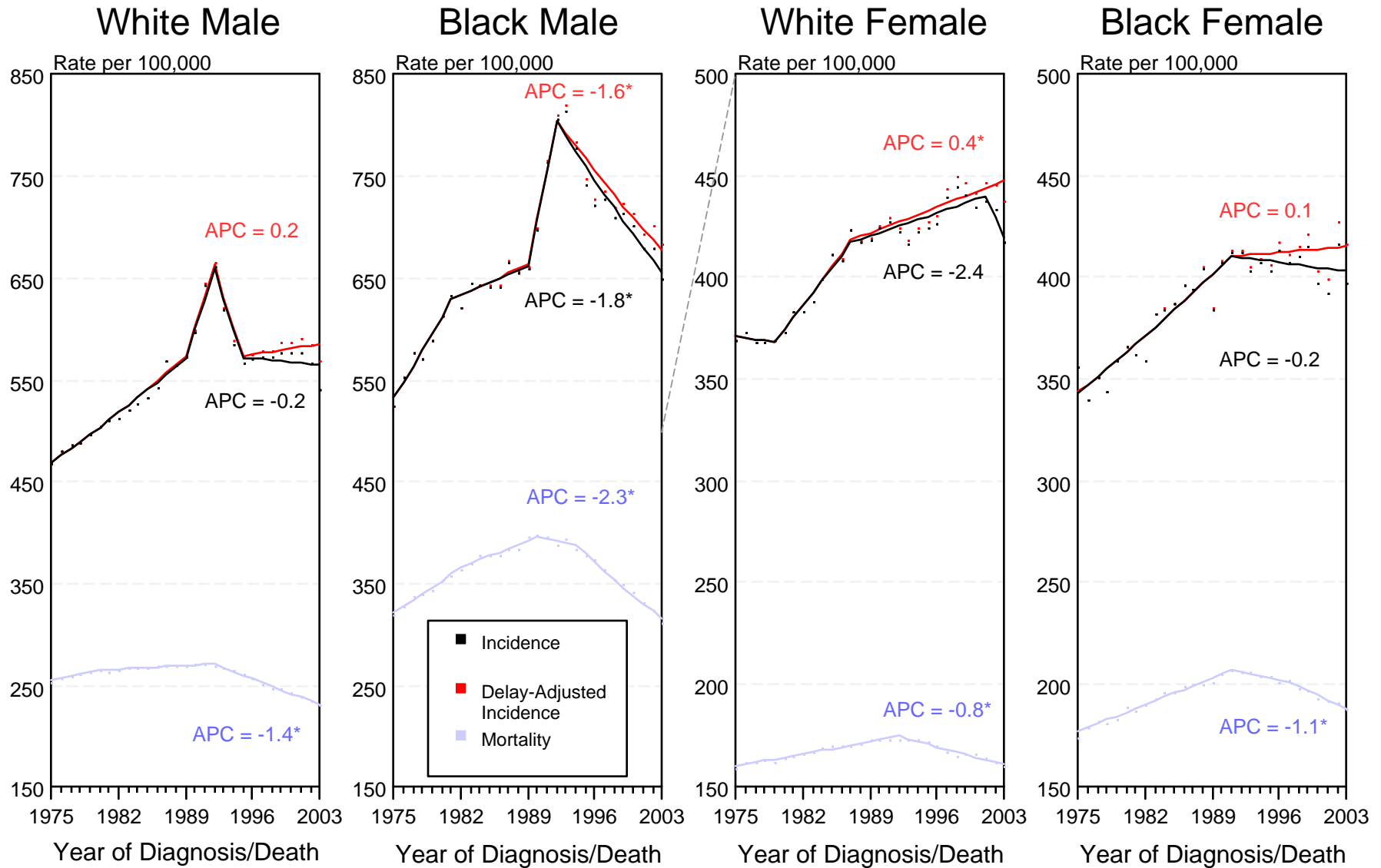


Figure II-1

+ Source: SEER 9 areas and NCHS public use data file for the total US. Rates are age-adjusted to the 2000 US Std Population (19 age groups - Census P25-1103). Regression lines and APCs are calculated using the Joinpoint Regression Program Version 3.1, April 2006, National Cancer Institute.

The APC is the Annual Percent Change for the regression line segments. The APC shown on the graph is for the most recent trend.

\* The APC is significantly different from zero ( $p < 0.05$ ).

# SEER Incidence, Delay Adjusted Incidence and US Death Rates+ All Cancer Sites, Under 65 Years of Age, by Race and Sex

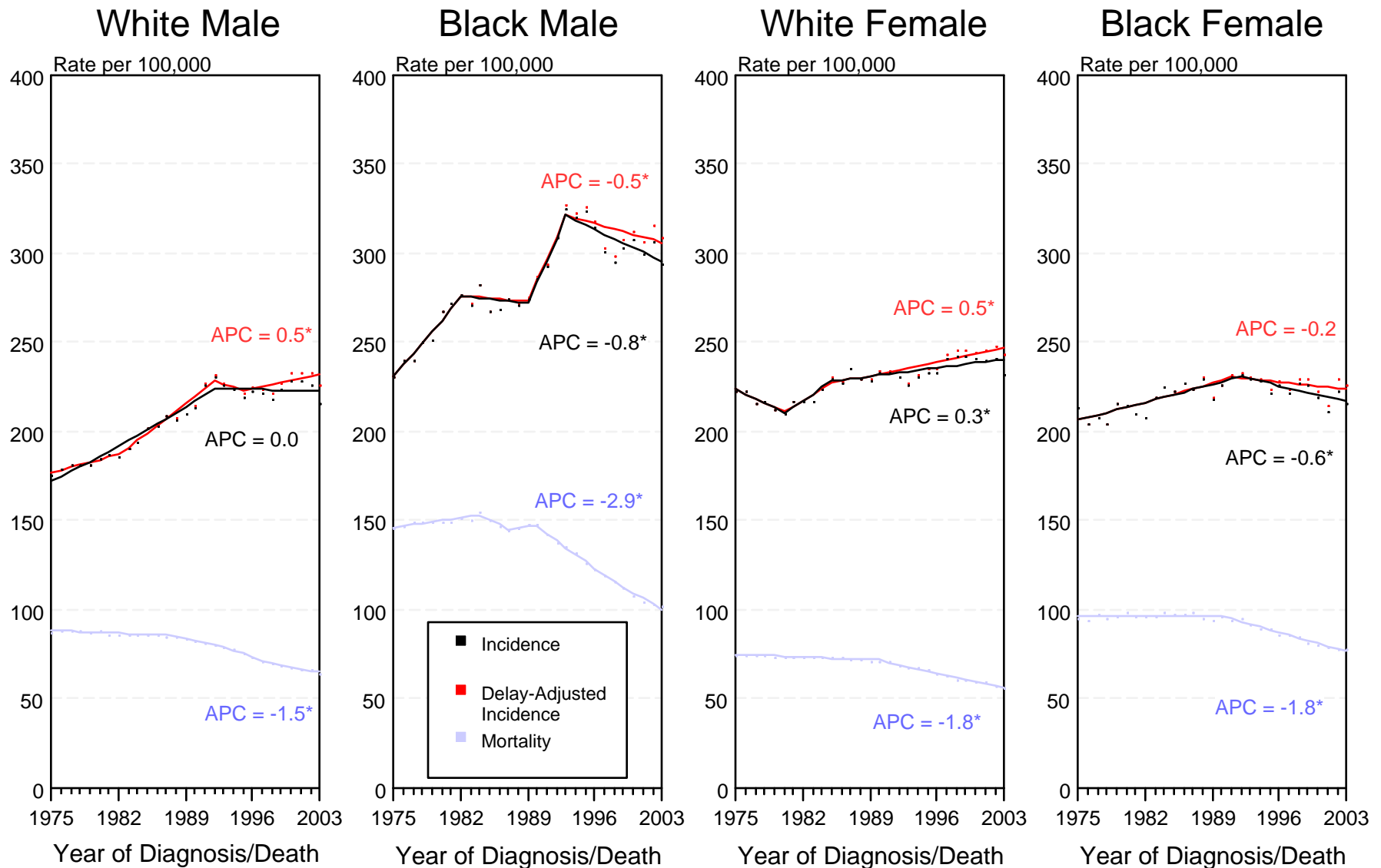


Figure II-2

+ Source: SEER 9 areas and NCHS public use data file for the total US. Rates are age-adjusted to the 2000 US Std Population (19 age groups - Census P25-1103). Regression lines and APCs are calculated using the Joinpoint Regression Program Version 3.1, April 2006, National Cancer Institute.

The APC is the Annual Percent Change for the regression line segments. The APC shown on the graph is for the most recent trend.

\* The APC is significantly different from zero ( $p < 0.05$ ).

# SEER Incidence, Delay Adjusted Incidence and US Death Rates+ All Cancer Sites, Ages 65 and Over, by Race and Sex

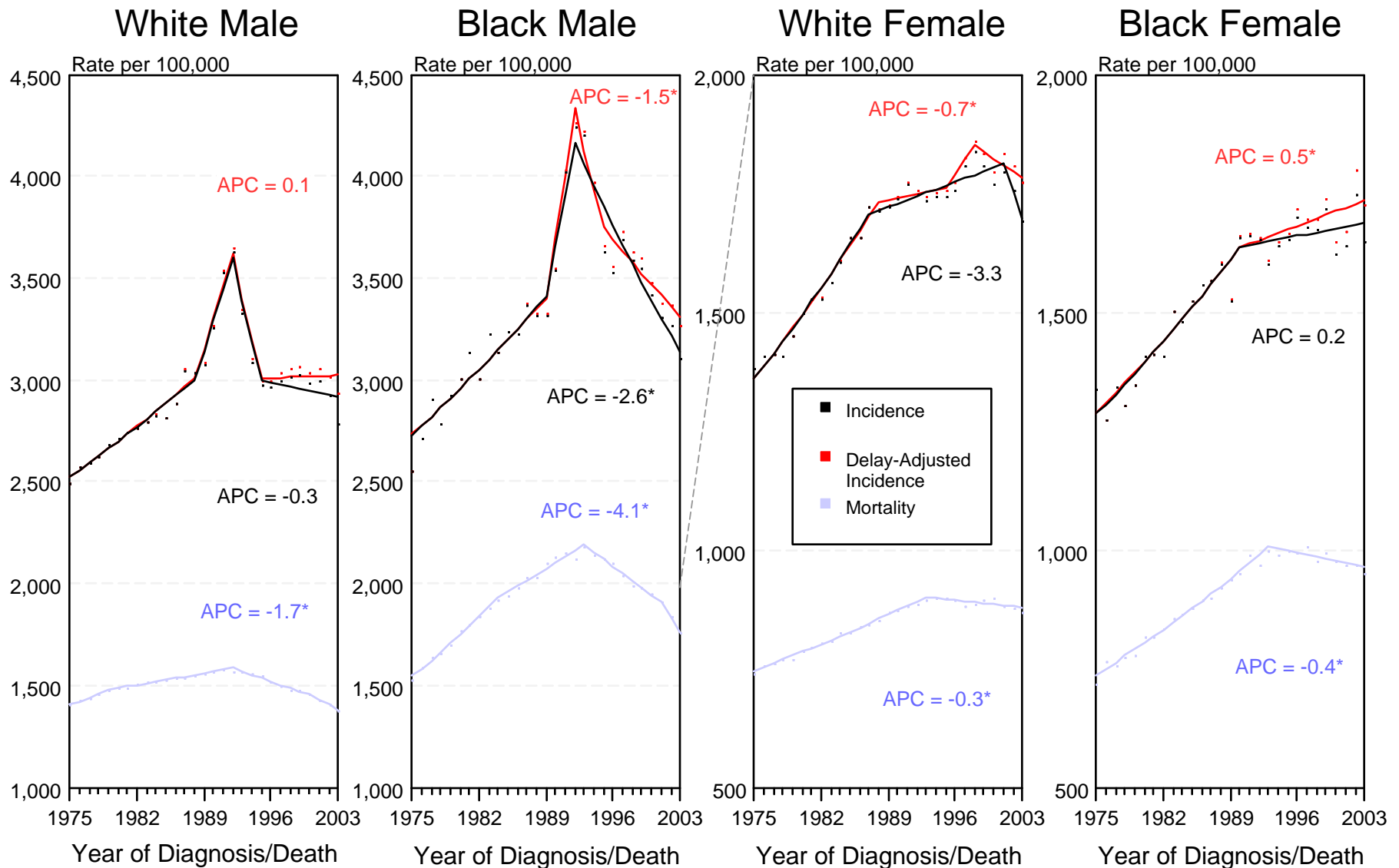


Figure II-3

+ Source: SEER 9 areas and NCHS public use data file for the total US. Rates are age-adjusted to the 2000 US Std Population (19 age groups - Census P25-1103). Regression lines and APCs are calculated using the Joinpoint Regression Program Version 3.1, April 2006, National Cancer Institute.

The APC is the Annual Percent Change for the regression line segments. The APC shown on the graph is for the most recent trend.

\* The APC is significantly different from zero ( $p < 0.05$ ).

# SEER Incidence and US Death Rates\*

## All Cancer Sites, Both Sexes

Joinpoint Analyses for Whites and Blacks from 1975-2003

and for Asian/Pacific Islanders, American Indians/Alaska Natives and Hispanics from 1992-2003

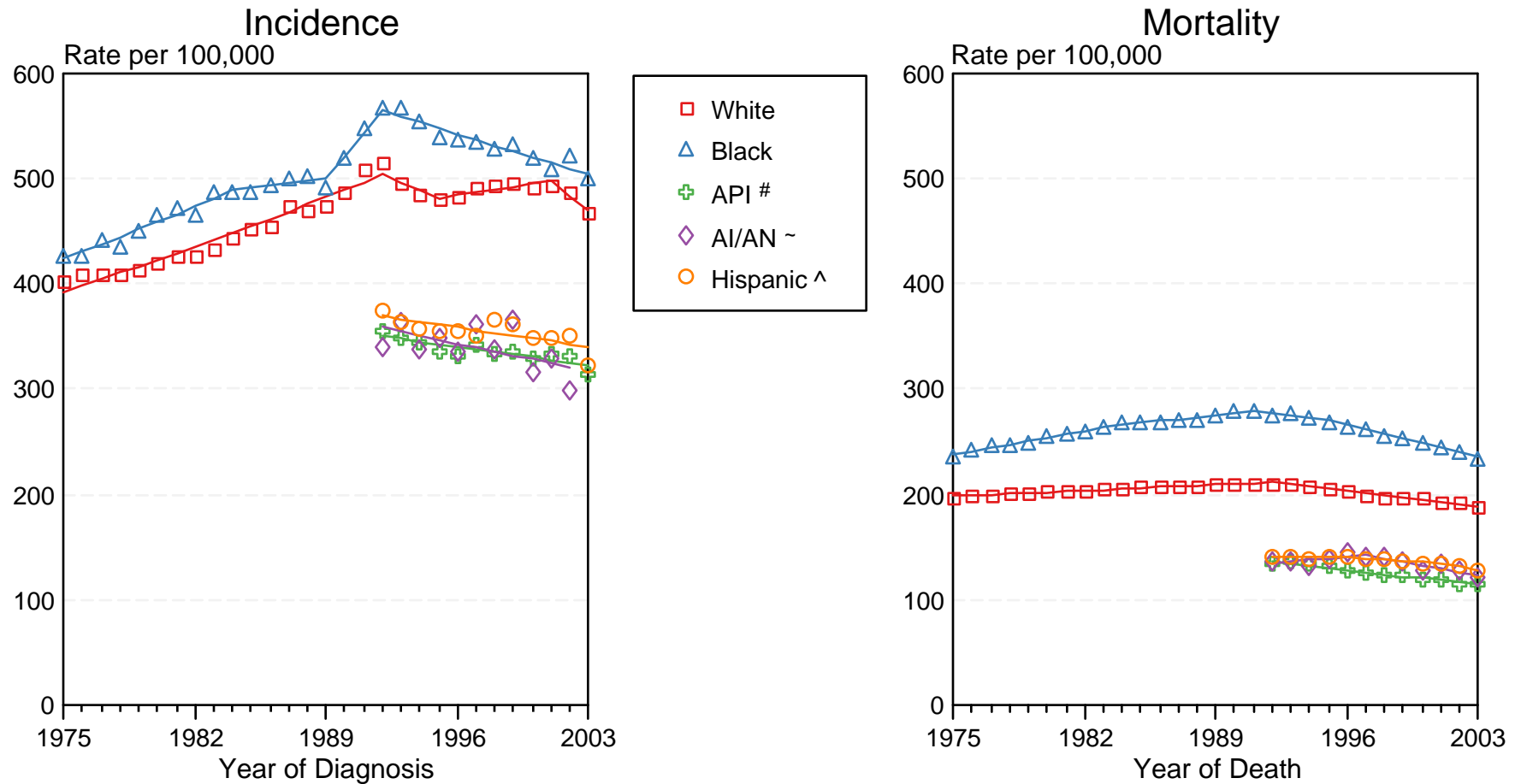


Figure II-4

Source: Incidence data for Whites and Blacks are from the SEER 9 areas (San Francisco, Connecticut, Detroit, Hawaii, Iowa, New Mexico, Seattle, Utah, Atlanta). Incidence data for Asian/Pacific Islanders and Hispanics are from the SEER 13 Areas (SEER 9 Areas, San Jose-Monterey, Los Angeles, Alaska Native Registry and Rural Georgia). Mortality data are from NCHS public use data file for the total US.

\* Rates are age-adjusted to the 2000 US Std Population (19 age groups - Census P25-1103).

Regression lines are calculated using the Joinpoint Regression Program Version 3.1, April 2006, National Cancer Institute.

# API = Asian/Pacific Islander.

~ AI/AN = American Indian/Alaska Native. Incidence data for AI/AN include cases from Connecticut, Detroit, Iowa, New Mexico, Seattle, Utah, Atlanta and the Alaska Native Registry for the time period 1992-2002. Mortality data are from the entire US for the time period 1992-2003.

^ Hispanic is not mutually exclusive from Whites, Blacks, Asian/Pacific Islanders, and American Indians/Alaska Natives. Incidence data for Hispanics are based on NHIA and exclude cases from Hawaii, Seattle, and the Alaska Native Registry. Mortality data for Hispanics exclude cases from Connecticut, Maine, Maryland, Minnesota, New Hampshire, New York, North Dakota, Oklahoma, and Vermont.