

Table II-1
ALL CANCER SITES (Invasive)

TRENDS IN SEER INCIDENCE^a AND U.S. MORTALITY^b USING THE JOINPOINT REGRESSION PROGRAM, 1975-2004
WITH UP TO THREE JOINPOINTS BY RACE AND SEX

		Joinpoint Segment 1		Joinpoint Segment 2		Joinpoint Segment 3		Joinpoint Segment 4	
		Year	APC	Year	APC	Year	APC	Year	APC
<u>SEER Cancer Incidence^a</u>									
All Races	Male and Female	1975-1992	1.4*	1992-1995	-1.3	1995-2001	0.3	2001-2004	-2.1*
All Races	Male	1975-1989	1.3*	1989-1992	5.0*	1992-1995	-4.1*	1995-2004	-0.5*
All Races	Female	1975-1979	-0.2	1979-1987	1.5*	1987-2001	0.3*	2001-2004	-1.7*
White	Male and Female	1975-1992	1.5*	1992-1995	-1.5	1995-2001	0.6	2001-2004	-2.2*
White	Male	1975-1989	1.4*	1989-1992	4.8*	1992-1995	-4.4*	1995-2004	-0.3
White	Female	1975-1979	-0.1	1979-1987	1.6*	1987-2001	0.4*	2001-2004	-1.8*
Black	Male and Female	1975-1984	1.6*	1984-1989	0.4	1989-1992	4.3*	1992-2004	-1.1*
Black	Male	1975-1981	2.8*	1981-1989	0.6	1989-1992	6.8*	1992-2004	-1.8*
Black	Female	1975-1991	1.1*	1991-2004	-0.2				
<u>SEER Delay-Adjusted Incidence^a</u>									
All Races	Male and Female	1975-1992	1.4*	1992-2004	-0.3*				
All Races	Male	1975-1989	1.3*	1989-1992	5.1*	1992-1995	-4.3*	1995-2004	-0.2
All Races	Female	1975-1979	-0.3	1979-1986	1.6*	1986-1999	0.4*	1999-2004	-0.5
White	Male and Female	1975-1992	1.5*	1992-1995	-1.4	1995-2001	0.7	2001-2004	-1.5
White	Male	1975-1989	1.4*	1989-1992	4.9*	1992-1995	-4.5*	1995-2004	0.0
White	Female	1975-1979	-0.1	1979-1987	1.5*	1987-2001	0.5*	2001-2004	-1.0
Black	Male and Female	1975-1984	1.6*	1984-1989	0.5	1989-1992	4.1*	1992-2004	-0.8*
Black	Male	1975-1981	2.8*	1981-1989	0.7	1989-1992	6.6*	1992-2004	-1.5*
Black	Female	1975-1991	1.1*	1991-2004	0.1				
<u>U.S. Cancer Mortality^b</u>									
All Races	Male and Female	1975-1990	0.5*	1990-1993	-0.3	1993-2002	-1.1*	2002-2004	-2.1*
All Races	Male	1975-1980	0.9*	1980-1992	0.3*	1992-2002	-1.5*	2002-2004	-2.6*
All Races	Female	1975-1990	0.6*	1990-1994	-0.2	1994-2002	-0.8*	2002-2004	-1.8*
White	Male and Female	1975-1990	0.4*	1990-1993	-0.3	1993-2002	-1.0*	2002-2004	-2.0*
White	Male	1975-1980	0.8*	1980-1992	0.2*	1992-2002	-1.4*	2002-2004	-2.4*
White	Female	1975-1991	0.6*	1991-2001	-0.6*	2001-2004	-1.5*		
Black	Male and Female	1975-1983	1.3*	1983-1991	0.7*	1991-1996	-0.9*	1996-2004	-1.8*
Black	Male	1975-1982	1.8*	1982-1990	1.1*	1990-1995	-0.7*	1995-2004	-2.5*
Black	Female	1975-1991	1.0*	1991-1997	-0.5	1997-2004	-1.3*		

Joinpoint Regression Program Version 3.0, April 2005, National Cancer Institute. (<http://srab.cancer.gov/joinpoint/>).

The APC is the Annual Percent Change based on rates age-adjusted to the 2000 US Std Population (19 age groups - Census P25-1130).

^a Trends are from the SEER 9 areas (San Francisco, Connecticut, Detroit, Hawaii, Iowa, New Mexico, Seattle, Utah, and Atlanta).

^b Trends are from the NCHS public use data file for the total US.

* The APC is significantly different from zero (p<.05).

Table II-2
ALL CANCER SITES (Invasive)

AGE ADJUSTED SEER INCIDENCE^a RATES BY YEAR, RACE AND SEX

	<u>All Races</u>			<u>Whites</u>			<u>Blacks</u>		
	<u>Total</u>	<u>Males</u>	<u>Females</u>	<u>Total</u>	<u>Males</u>	<u>Females</u>	<u>Total</u>	<u>Males</u>	<u>Females</u>
<u>AGE-ADJUSTED RATES</u>									
<u>YEAR OF DIAGNOSIS:</u>									
1975	400.4	466.8	365.8	402.2	468.7	369.6	426.2	525.0	356.6
1976	407.3	481.1	367.3	409.7	481.8	373.2	427.3	552.9	340.4
1977	407.7	486.5	363.6	409.3	487.1	367.8	442.5	577.6	351.8
1978	407.3	488.4	362.1	409.8	489.9	367.9	436.3	570.4	343.9
1979	412.5	496.5	365.4	414.0	497.6	369.6	451.4	589.8	358.7
1980	417.9	505.7	367.9	419.4	505.2	373.2	467.0	614.6	366.1
1981	425.2	510.9	377.0	427.7	510.9	383.8	472.5	633.6	362.8
1982	424.4	511.0	376.1	427.7	512.4	383.4	465.1	621.9	359.4
1983	431.1	519.9	380.7	434.4	520.8	388.0	486.7	645.6	381.6
1984	439.8	525.4	392.3	443.4	527.4	399.3	487.5	643.7	385.1
1985	448.7	531.1	403.0	453.1	533.2	411.2	488.1	642.6	387.4
1986	451.2	538.1	402.0	455.7	542.7	408.8	493.1	642.9	396.0
1987	467.9	563.0	413.2	474.7	568.4	423.2	500.8	665.8	393.9
1988	463.6	558.2	409.0	470.0	564.8	417.6	503.5	656.9	404.2
1989	467.4	566.8	408.0	474.7	573.2	418.2	491.9	660.3	384.2
1990	481.4	592.2	415.0	488.3	598.6	424.3	520.2	698.2	407.3
1991	502.5	637.0	418.3	509.8	643.7	427.9	548.7	764.5	412.2
1992	510.0	657.3	414.4	516.0	662.0	423.1	567.4	806.9	412.4
1993	492.8	621.3	407.9	496.3	619.2	416.7	566.8	815.6	403.2
1994	482.7	588.8	412.8	486.5	586.6	422.2	555.4	779.2	407.6
1995	475.8	570.1	413.9	480.8	568.4	425.0	539.8	743.1	403.6
1996	477.7	570.7	417.0	483.2	571.5	427.0	537.2	722.5	414.4
1997	484.6	573.3	426.9	491.6	573.8	439.6	535.1	730.4	407.6
1998	486.2	570.2	432.2	494.5	573.4	445.2	529.7	713.4	411.2
1999	488.3	578.1	428.5	495.8	579.2	441.4	534.7	714.4	416.8
2000	482.8	575.5	419.4	493.2	579.1	435.4	520.6	703.8	397.9
2001	484.6	574.1	422.7	495.9	580.1	438.5	509.4	681.5	392.7
2002	479.9	565.1	421.3	489.5	570.3	434.3	522.5	682.1	415.0
2003	465.0	547.3	408.3	474.2	550.1	422.5	503.9	658.4	399.8
2004	457.8	534.2	405.0	466.8	537.9	417.9	493.1	637.2	396.6
1975-2004	460.5	552.8	402.9	465.5	554.7	411.9	505.5	676.4	392.3

^a SEER 9 areas (San Francisco, Connecticut, Detroit, Hawaii, Iowa, New Mexico, Seattle, Utah, and Atlanta). Rates are per 100,000 and are age-adjusted to the 2000 US Std Population (19 age groups - Census P25-1130).
 - Statistic not shown. Rate based on less than 16 cases for the time interval.

Table II-3
ALL CANCER SITES (Invasive)

AGE-ADJUSTED U.S. DEATH^a RATES BY YEAR, RACE AND SEX

	<u>All Races</u>			<u>Whites</u>			<u>Blacks</u>		
	<u>Total</u>	<u>Males</u>	<u>Females</u>	<u>Total</u>	<u>Males</u>	<u>Females</u>	<u>Total</u>	<u>Males</u>	<u>Females</u>
<u>AGE-ADJUSTED RATES</u>									
<u>YEAR OF DEATH:</u>									
1975	199.1	258.4	160.0	196.3	254.0	159.0	235.5	320.5	174.2
1976	202.3	262.2	162.7	199.4	257.5	161.7	241.8	328.4	179.1
1977	203.0	264.2	162.9	199.7	258.8	161.6	246.4	337.9	181.6
1978	204.4	267.1	163.8	201.1	261.6	162.5	247.2	340.9	181.5
1979	204.5	268.7	163.1	201.2	263.2	161.7	249.0	344.7	182.7
1980	207.0	271.1	165.8	203.3	265.0	164.2	256.2	353.9	189.2
1981	206.4	269.8	165.9	202.6	263.3	164.6	256.8	358.6	187.5
1982	208.3	272.9	167.4	204.5	266.3	166.1	260.4	364.9	190.2
1983	209.2	274.1	168.3	205.2	267.2	166.7	263.8	369.3	193.2
1984	210.9	275.1	170.5	206.7	267.6	169.0	268.1	377.9	195.7
1985	211.3	275.7	171.0	207.3	268.2	169.6	268.1	377.8	196.3
1986	211.8	276.0	171.6	207.7	268.8	170.0	269.4	378.9	199.1
1987	211.9	276.3	171.5	207.8	269.0	169.9	271.1	383.2	199.9
1988	212.6	276.9	172.5	208.5	269.5	170.9	271.6	384.2	200.4
1989	214.3	278.5	174.3	210.0	270.2	172.9	275.9	395.3	200.9
1990	214.9	279.8	174.7	210.4	271.5	172.9	279.3	399.1	205.4
1991	215.1	279.1	175.3	210.6	271.2	173.4	279.0	395.9	207.4
1992	213.5	276.5	174.4	209.2	268.9	172.6	274.9	389.2	205.8
1993	213.4	275.9	174.6	209.2	267.9	172.8	277.1	394.8	206.3
1994	211.7	272.1	174.1	207.8	264.7	172.6	272.0	385.2	204.1
1995	209.9	268.5	173.4	206.1	261.5	171.7	269.5	379.0	204.5
1996	207.0	263.7	171.2	203.4	256.8	169.8	265.3	373.7	200.9
1997	203.6	258.1	169.0	199.9	251.6	167.3	262.1	363.2	202.5
1998	200.8	253.6	166.9	197.6	247.6	165.4	255.7	353.1	198.4
1999	200.7	252.8	167.2	197.8	247.1	165.9	253.8	349.2	197.5
2000	198.7	248.2	166.6	196.3	243.1	165.9	248.1	341.0	193.2
2001	195.9	244.1	164.3	193.6	239.4	163.5	244.1	332.4	191.9
2002	193.7	240.2	162.9	191.7	236.3	162.0	240.3	323.0	191.1
2003	190.0	234.1	160.5	188.3	230.6	159.7	234.4	311.3	188.1
2004	185.7	228.3	157.0	184.1	224.8	156.4	228.1	303.5	182.8
1975-2004	205.5	263.7	168.2	202.2	257.6	166.9	258.5	359.1	195.1

^a NCHS public use data file for the total US. Rates are per 100,000 and are age-adjusted to the 2000 US Std Population (19 age groups - Census P25-1130).

- Statistic not shown. Rate based on less than 16 cases for the time interval.

Table II-4
ALL CANCER SITES (Invasive)

SEER INCIDENCE^a AND U.S. DEATH^b RATES, AGE-ADJUSTED AND AGE-SPECIFIC RATES, BY RACE AND SEX

	All Races			Whites			Blacks		
	Total	Males	Females	Total	Males	Females	Total	Males	Females
<u>SEER INCIDENCE</u>									
<u>AGE AT DIAGNOSIS</u>									
AGE-ADJUSTED RATES, 2000-2004									
All ages	470.1	555.8	411.3	477.5	556.7	423.9	504.1	663.7	396.9
Under 65	223.0	220.3	226.8	226.3	220.1	233.7	249.6	289.3	218.1
65 and over	2,177.8	2,875.3	1,686.5	2,214.0	2,884.0	1,738.7	2,263.2	3,251.8	1,632.8
All ages(IARC world std) ^c	318.3	363.9	284.9	323.9	364.7	294.2	346.2	447.1	273.8
AGE-SPECIFIC RATES, 2000-2004									
<1	23.2	23.4	23.0	24.1	24.8	23.4	17.0	14.6	19.6
1-4	20.7	22.5	18.7	21.9	23.8	19.9	13.6	14.3	12.9
5-9	11.2	11.9	10.4	11.8	12.7	10.9	8.6	9.0	8.1
10-14	12.6	13.1	12.2	13.2	13.8	12.7	10.1	10.3	9.8
15-19	21.0	22.7	19.3	22.9	24.8	20.9	13.4	14.3	12.6
20-24	33.2	31.8	34.7	36.2	35.1	37.4	21.5	18.5	24.5
25-29	52.3	44.3	60.6	56.3	48.0	65.3	39.1	33.5	44.3
30-34	80.9	61.7	100.8	84.7	65.3	105.4	69.7	49.8	88.0
35-39	125.1	88.6	162.1	128.3	91.5	166.7	118.9	84.6	150.2
40-44	207.1	145.5	268.4	210.5	147.1	275.2	208.1	164.2	247.8
45-49	341.8	271.9	410.0	343.0	269.3	416.7	383.4	359.6	404.2
50-54	550.7	529.7	570.9	553.6	521.8	584.8	660.0	761.7	573.5
55-59	876.0	956.4	800.3	880.4	940.1	823.0	1,065.6	1,402.3	785.9
60-64	1,291.0	1,541.9	1,061.9	1,311.8	1,538.1	1,101.2	1,509.3	2,074.2	1,055.9
65-69	1,795.6	2,289.4	1,372.1	1,834.4	2,297.1	1,429.1	1,997.3	2,874.3	1,329.6
70-74	2,170.1	2,856.3	1,623.5	2,217.4	2,872.2	1,685.1	2,289.8	3,325.7	1,570.1
75-79	2,453.0	3,266.4	1,882.9	2,493.6	3,271.1	1,944.5	2,491.8	3,607.7	1,804.2
80-84	2,462.7	3,258.0	1,968.1	2,485.0	3,251.0	2,009.0	2,443.1	3,474.0	1,883.9
85+	2,231.2	3,087.1	1,843.8	2,247.2	3,108.7	1,863.1	2,191.2	3,059.7	1,843.9
<u>U.S. MORTALITY</u>									
<u>AGE AT DEATH</u>									
AGE-ADJUSTED RATES, 2000-2004									
All ages	192.7	238.7	162.2	190.7	234.7	161.4	238.8	321.8	189.3
Under 65	63.4	68.2	59.1	61.5	65.6	57.7	89.3	103.2	78.2
65 and over	1,086.1	1,417.4	874.8	1,083.7	1,403.2	878.4	1,272.0	1,832.5	957.8
All ages(IARC world std) ^c	115.6	137.9	99.3	114.0	135.0	98.5	147.9	191.1	119.5
AGE-SPECIFIC RATES, 2000-2004									
<1	1.9	1.9	1.9	2.0	2.0	2.0	1.3	1.0	1.6
1-4	2.6	2.8	2.4	2.7	2.9	2.5	2.5	2.6	2.4
5-9	2.6	2.8	2.3	2.6	2.8	2.4	2.4	2.6	2.1
10-14	2.5	2.7	2.3	2.5	2.6	2.3	2.6	2.9	2.3
15-19	3.5	4.2	2.9	3.6	4.2	2.9	3.7	4.2	3.1
20-24	4.8	5.6	4.1	4.8	5.6	4.1	5.2	6.0	4.4
25-29	6.9	7.0	6.8	6.8	7.0	6.6	8.5	7.8	9.2
30-34	12.2	11.0	13.3	11.8	10.9	12.7	15.9	13.0	18.4
35-39	23.5	19.9	27.0	22.6	19.5	25.8	31.7	24.3	38.2
40-44	47.0	42.4	51.6	44.7	40.3	49.1	68.6	62.1	74.4
45-49	90.5	90.2	90.8	85.7	85.0	86.4	137.1	142.2	132.8
50-54	160.7	170.8	151.0	153.8	161.4	146.3	241.0	279.4	208.4
55-59	275.0	305.2	246.7	267.3	292.9	242.8	394.9	482.9	322.7
60-64	446.3	516.1	382.9	439.9	502.5	382.1	590.4	754.4	461.8
65-69	662.6	795.0	548.2	657.9	782.3	548.3	829.9	1,083.7	641.8
70-74	925.5	1,146.0	749.5	922.5	1,130.8	753.0	1,118.1	1,534.0	839.0
75-79	1,198.7	1,544.3	954.3	1,196.3	1,526.4	959.7	1,409.5	2,028.2	1,039.8
80-84	1,457.6	1,957.0	1,155.2	1,456.5	1,940.2	1,161.1	1,658.8	2,512.8	1,216.9
85+	1,727.5	2,506.8	1,392.3	1,729.6	2,501.0	1,397.8	1,879.2	2,975.0	1,458.4

^a SEER 17 areas. Rates are per 100,000 and are age-adjusted to the 2000 US Std Population (19 age groups - Census P25-1130), unless noted.

^b NCHS public use data file for the total US. Rates are per 100,000 and are age-adjusted to the 2000 US Std Population (19 age groups - Census P25-1130), unless noted.

^c Rates are per 100,000 and are age-adjusted to the IARC world standard population.

- Statistic not shown. Rate based on less than 16 cases for the time interval.

Table II-5
ALL CANCER SITES (Invasive)

	All Races			Whites			Blacks		
	Total	Males	Females	Total	Males	Females	Total	Males	Females
<u>5-YR RELATIVE SURVIVAL RATES</u>									
YEAR OF DIAGNOSIS:									
1960-1963 ^a	-	-	-	39	-	-	27	-	-
1970-1973 ^a	-	-	-	43	-	-	31	-	-
1975-1977 ^b	50.1	42.3	57.1	51.0	43.3	57.8	39.8	32.7	47.2
1978-1980 ^b	50.4	44.0	56.4	51.4	45.3	57.1	39.6	33.3	46.5
1981-1983 ^b	51.6	46.1	56.7	52.8	47.6	57.6	39.6	34.2	45.6
1984-1986 ^b	53.5	47.7	58.9	54.7	49.1	59.9	40.7	35.5	46.4
1987-1989 ^b	56.4	51.6	61.0	57.7	53.3	62.1	43.6	38.8	48.9
1990-1992 ^b	60.9	59.5	62.3	62.4	61.3	63.5	48.2	47.3	49.2
1993-1995 ^b	62.2	61.1	63.4	63.4	62.4	64.4	52.8	53.5	51.9
1996-2003 ^b	65.9 ^e	65.4 ^e	66.3 ^e	67.0 ^e	66.6 ^e	67.4 ^e	57.0 ^e	59.2 ^e	54.5 ^e
<u>5-YR PERIOD SURVIVAL RATES^{cd}</u>									
YEAR OF DIAGNOSIS:									
1996-2003	65.5	65.5	65.5	66.3	66.2	66.4	57.4	59.8	54.7
<u>5-YR RELATIVE SURVIVAL RATES, 1996-2003^c</u>									
AGE AT DIAGNOSIS:									
<45	77.2	71.3	81.1	79.2	73.9	82.8	62.4	54.1	67.8
45-54	70.1	63.2	75.6	71.9	65.0	77.2	57.7	54.2	61.3
55-64	67.2	66.9	67.6	68.4	67.9	69.0	58.9	62.4	53.5
65-74	63.1	66.3	58.7	63.8	66.7	59.9	56.2	63.3	45.9
75+	52.9	56.8	49.2	53.5	57.0	50.3	44.5	50.9	38.7
Under 65	70.6	66.8	74.1	72.1	68.4	75.6	59.4	58.3	60.5
65 and over	58.7	62.7	54.2	59.3	63.0	55.3	51.9	59.3	42.8

^a Rates are based on End Results data from a series of hospital registries and one population-based registry.

^b Rates are from the SEER 9 areas (San Francisco, Connecticut, Detroit, Hawaii, Iowa, New Mexico, Seattle, Utah, Atlanta).

Rates are based on follow-up of patients into 2004.

^c Rates are from the SEER 17 areas (San Francisco, Connecticut, Detroit, Hawaii, Iowa, New Mexico, Seattle, Utah, Atlanta, San Jose-Monterey, Los Angeles, Alaska Native Registry, Rural Georgia, California excluding SF/SJM/LA, Kentucky, Louisiana and New Jersey). California excluding SF/SJM/LA, Kentucky, Louisiana, and New Jersey contribute cases for diagnosis years 2000-2003. The remaining 13 SEER Areas contribute cases for the entire period 1996-2003. Rates are based on follow-up of patients into 2004.

^d Period survival provides a more up-to-date estimate of survival by piecing together the most recent conditional survival estimates from several cohorts. It is computed here using three calendar year blocks (2001-2003: 0-1 year survival), (2000-2002: 1-2 year survival), (1999-2001: 2-3 year survival), (1998-2000: 3-4 year survival), (1997-1999: 4-5 years survival).

^e The difference in rates between 1975-1977 and 1996-2003 is statistically significant ($p < .05$).

^f The standard error of the survival rate is between 5 and 10 percentage points.

^g The standard error of the survival rate is greater than 10 percentage points.

- Statistic could not be calculated due to fewer than 16 cases during the time period.

Table II-6
ALL CANCER SITES (Invasive)

SURVIVAL RATES^a

By Year of Diagnosis

All Races, Males and Females

Year of Diagnosis

	1975- 1979	1980- 1984	1985	1986	1987	1988	1989	1990	1991	1992	1993	1994	1995	1996	1997	1998	1999	2000	2001	2002	2003
Relative Survival Rates (SEER ^b)																					
1-year	70.0	71.7	73.1	73.6	74.3	74.3	74.8	75.8	77.4	78.0	77.4	77.2	77.2	77.6	78.2	78.6	79.2	79.6	80.0	80.2	79.9
2-year	60.4	62.1	63.8	64.2	65.4	65.5	66.3	67.4	69.3	70.6	70.2	69.7	69.9	70.7	71.4	71.9	72.7	73.2	73.9	74.3	
3-year	55.5	57.2	59.0	59.6	60.7	61.2	61.8	63.2	65.3	66.9	66.4	66.1	66.3	67.2	68.0	68.7	69.6	70.1	70.9		
4-year	52.4	53.9	55.8	56.6	57.9	58.4	59.0	60.5	62.9	64.5	64.0	63.6	64.0	65.0	65.9	66.6	67.7	68.3			
5-year	50.2	51.5	53.6	54.5	55.8	56.4	56.9	58.8	61.0	62.6	62.2	61.9	62.5	63.5	64.3	65.1	66.3				
6-year	48.5	49.7	52.0	52.9	54.1	54.8	55.4	57.2	59.3	61.2	60.9	60.6	61.2	62.4	63.1	64.1					
7-year	47.2	48.2	50.6	51.6	52.6	53.4	54.1	55.7	58.0	59.8	59.6	59.5	60.3	61.6	62.4						
8-year	46.1	47.1	49.6	50.6	51.6	52.3	52.9	54.6	56.8	58.8	58.6	58.7	59.6	60.9							
9-year	45.2	46.1	48.6	49.7	50.6	51.3	52.0	53.6	55.9	58.0	57.8	58.0	58.9								
10-year	44.4	45.3	47.8	48.9	49.9	50.5	51.2	52.7	55.2	57.2	57.0	57.4									
11-year	43.7	44.7	47.2	48.2	49.0	49.8	50.6	52.0	54.5	56.4	56.4										
12-year	43.2	44.2	46.5	47.6	48.4	49.0	49.9	51.4	53.9	55.9											
13-year	42.8	43.7	46.0	47.0	47.7	48.4	49.4	50.9	53.3												
14-year	42.5	43.3	45.5	46.5	47.3	48.0	48.9	50.4													
15-year	42.2	43.0	45.1	45.9	46.9	47.6	48.5														
16-year	41.9	42.5	44.7	45.6	46.6	47.3															
17-year	41.8	42.2	44.3	45.5	46.5																
18-year	41.7	42.0	44.1	45.5																	
19-year	41.6	41.8	44.1																		
20-year	41.5	41.7																			

^a Survival rates are relative rates expressed as percents.

^b Rates are from the SEER 9 areas (San Francisco, Connecticut, Detroit, Hawaii, Iowa, New Mexico, Seattle, Utah, and Atlanta).

Table II-7
ALL CANCER SITES (Invasive)

SURVIVAL RATES^a

By Year of Diagnosis

All Races, Males

Year of Diagnosis

	1975- 1979	1980- 1984	1985	1986	1987	1988	1989	1990	1991	1992	1993	1994	1995	1996	1997	1998	1999	2000	2001	2002	2003
Relative Survival Rates (SEER ^b)																					
1-year	64.6	67.6	69.1	69.8	71.0	71.2	72.0	73.8	76.4	77.7	76.8	76.3	76.0	76.7	77.4	77.3	78.5	79.1	79.6	79.6	79.4
2-year	53.9	57.2	58.9	59.4	61.3	61.5	62.9	64.7	68.2	70.2	69.5	68.5	68.3	69.6	70.4	70.6	71.9	72.8	73.4	73.8	
3-year	48.6	52.0	53.7	54.4	56.2	56.7	58.1	60.4	64.4	66.8	65.9	64.8	64.8	66.3	67.2	67.4	68.8	69.8	70.8		
4-year	45.2	48.5	50.2	51.0	53.1	53.5	54.9	57.6	61.8	64.6	63.5	62.3	62.6	64.0	65.2	65.4	67.1	68.1			
5-year	42.8	45.9	47.8	48.8	50.9	51.3	52.7	55.7	59.8	62.6	61.6	60.6	61.0	62.6	63.6	64.1	65.9				
6-year	41.0	43.9	46.1	47.0	49.1	49.5	51.0	54.0	57.9	60.9	60.3	59.3	59.8	61.5	62.5	63.1					
7-year	39.5	42.3	44.5	45.6	47.4	47.8	49.4	52.1	56.3	59.4	58.9	58.2	58.8	60.6	61.9						
8-year	38.2	41.0	43.4	44.4	46.0	46.4	47.9	50.7	54.8	58.0	58.0	57.1	58.0	60.0							
9-year	37.1	39.9	42.3	43.3	44.8	45.1	46.6	49.5	53.7	56.9	56.8	56.3	57.4								
10-year	36.0	39.0	41.5	42.3	43.7	44.0	45.5	48.3	52.7	55.9	55.9	55.6									
11-year	35.1	38.3	40.6	41.4	42.7	43.2	44.6	47.3	51.7	55.0	55.2										
12-year	34.4	37.6	39.6	40.5	41.7	42.1	43.6	46.5	51.0	54.3											
13-year	33.8	37.1	39.0	39.7	40.9	41.1	42.8	45.9	50.2												
14-year	33.3	36.5	38.1	39.0	40.4	40.6	42.0	45.3													
15-year	32.9	36.0	37.5	38.2	39.8	39.9	41.2														
16-year	32.5	35.4	37.0	37.7	39.4	39.1															
17-year	32.2	35.0	36.5	37.7	39.1																
18-year	31.9	34.7	36.2	37.5																	
19-year	31.8	34.4	36.1																		
20-year	31.6	34.2																			

^a Survival rates are relative rates expressed as percents.

^b Rates are from the SEER 9 areas (San Francisco, Connecticut, Detroit, Hawaii, Iowa, New Mexico, Seattle, Utah, and Atlanta).

Table II-8
ALL CANCER SITES (Invasive)

SURVIVAL RATES^a

By Year of Diagnosis

All Races, Females

Year of Diagnosis

	1975- 1979	1980- 1984	1985	1986	1987	1988	1989	1990	1991	1992	1993	1994	1995	1996	1997	1998	1999	2000	2001	2002	2003
Relative Survival Rates (SEER ^b)																					
1-year	75.4	75.8	77.1	77.4	77.6	77.5	77.7	77.8	78.5	78.4	78.2	78.1	78.6	78.5	79.2	79.9	80.0	80.1	80.5	80.8	80.5
2-year	66.7	67.1	68.7	69.1	69.6	69.6	69.8	70.2	70.6	71.0	70.9	71.2	71.5	71.8	72.3	73.2	73.7	73.6	74.5	74.9	
3-year	62.1	62.3	64.1	64.7	65.2	65.7	65.6	66.1	66.4	67.1	67.0	67.4	67.8	68.3	68.8	69.9	70.4	70.5	71.0		
4-year	59.0	59.2	61.1	62.0	62.6	63.3	63.1	63.6	64.1	64.5	64.5	65.0	65.5	66.1	66.6	67.8	68.3	68.4			
5-year	56.9	56.9	59.0	59.8	60.5	61.3	61.2	62.0	62.3	62.7	62.8	63.3	63.9	64.4	65.0	66.1	66.8				
6-year	55.2	55.1	57.4	58.4	58.9	59.9	59.8	60.5	60.9	61.4	61.5	62.0	62.8	63.2	63.8	65.1					
7-year	53.9	53.7	56.1	57.1	57.6	58.7	58.7	59.3	59.9	60.3	60.4	61.0	61.7	62.5	63.0						
8-year	52.9	52.5	55.1	56.2	56.8	57.8	57.7	58.4	58.9	59.6	59.4	60.4	61.1	61.7							
9-year	52.1	51.6	54.0	55.4	55.9	56.9	57.1	57.6	58.2	59.1	58.8	59.9	60.5								
10-year	51.3	50.8	53.3	54.6	55.3	56.3	56.5	56.9	57.7	58.6	58.2	59.2									
11-year	50.7	50.1	52.7	54.1	54.6	55.7	56.1	56.4	57.3	58.0	57.7										
12-year	50.1	49.6	52.2	53.6	54.2	55.1	55.5	55.9	56.8	57.6											
13-year	49.8	49.1	51.9	53.2	53.5	54.6	55.3	55.5	56.4												
14-year	49.4	48.7	51.5	52.8	53.1	54.3	55.0	55.1													
15-year	49.0	48.4	51.2	52.3	52.8	54.1	54.8														
16-year	48.8	48.0	50.8	51.9	52.5	54.1															
17-year	48.6	47.7	50.3	51.7	52.4																
18-year	48.4	47.5	50.1	51.7																	
19-year	48.3	47.3	50.1																		
20-year	48.1	47.2																			

^a Survival rates are relative rates expressed as percents.

^b Rates are from the SEER 9 areas (San Francisco, Connecticut, Detroit, Hawaii, Iowa, New Mexico, Seattle, Utah, and Atlanta).

Table II-9
ALL CANCER SITES (Invasive)

Risk of Being Diagnosed With Cancer in 10, 20 and 30 Years, Lifetime Risk of Being Diagnosed with Cancer, and
 Lifetime Risk of Dying from Cancer Given Cancer Free At Current Age
 Both Sexes, 2002-2004 By Race/Ethnicity

Race/ Ethnicity	Current Age	Risk of Being Diagnosed with Cancer			Risk of Dying from Cancer	
		+10 yrs Percent (95% C.I.)	+20 yrs Percent (95% C.I.)	+30 yrs Percent (95% C.I.)	Eventually Percent (95% C.I.)	Eventually Percent (95% C.I.)
All Races	0	0.16 (0.16, 0.17)	0.33 (0.33, 0.34)	0.75 (0.74, 0.76)	40.93 (40.83, 41.02)	21.29 (21.26, 21.32)
	10	0.17 (0.17, 0.18)	0.60 (0.59, 0.60)	1.58 (1.57, 1.60)	41.33 (41.24, 41.43)	21.57 (21.54, 21.60)
	20	0.43 (0.42, 0.43)	1.42 (1.41, 1.43)	3.93 (3.91, 3.95)	41.39 (41.29, 41.49)	21.63 (21.60, 21.66)
	30	1.01 (1.00, 1.01)	3.55 (3.53, 3.57)	9.59 (9.55, 9.62)	41.49 (41.39, 41.58)	21.78 (21.75, 21.81)
	40	2.60 (2.59, 2.62)	8.77 (8.73, 8.80)	20.01 (19.95, 20.07)	41.35 (41.25, 41.45)	21.89 (21.86, 21.93)
	50	6.47 (6.44, 6.50)	18.27 (18.21, 18.33)	31.33 (31.24, 31.41)	40.67 (40.57, 40.77)	21.85 (21.82, 21.88)
	60	13.16 (13.11, 13.21)	27.71 (27.63, 27.80)	36.08 (35.98, 36.18)	38.13 (38.02, 38.24)	21.05 (21.02, 21.08)
	70	18.46 (18.39, 18.54)	29.07 (28.96, 29.17)	- (- , -)	31.67 (31.56, 31.79)	18.54 (18.51, 18.58)
80	17.10 (17.00, 17.20)	- (- , -)	- (- , -)	21.30 (21.18, 21.42)	13.89 (13.86, 13.93)	
White	0	0.17 (0.16, 0.17)	0.35 (0.34, 0.36)	0.80 (0.79, 0.81)	41.39 (41.29, 41.50)	21.45 (21.42, 21.49)
	10	0.18 (0.18, 0.19)	0.64 (0.63, 0.65)	1.66 (1.64, 1.67)	41.73 (41.63, 41.84)	21.68 (21.65, 21.72)
	20	0.46 (0.45, 0.47)	1.48 (1.47, 1.50)	4.01 (3.99, 4.03)	41.78 (41.67, 41.88)	21.75 (21.71, 21.78)
	30	1.04 (1.03, 1.05)	3.60 (3.58, 3.62)	9.65 (9.61, 9.68)	41.83 (41.73, 41.94)	21.88 (21.84, 21.91)
	40	2.61 (2.60, 2.63)	8.79 (8.75, 8.82)	20.22 (20.16, 20.29)	41.66 (41.55, 41.76)	21.98 (21.94, 22.01)
	50	6.47 (6.44, 6.50)	18.46 (18.40, 18.52)	31.70 (31.61, 31.79)	40.93 (40.82, 41.04)	21.92 (21.88, 21.95)
	60	13.33 (13.27, 13.39)	28.05 (27.96, 28.14)	36.35 (36.24, 36.47)	38.31 (38.19, 38.43)	21.10 (21.06, 21.13)
	70	18.66 (18.57, 18.74)	29.18 (29.07, 29.29)	- (- , -)	31.66 (31.54, 31.79)	18.54 (18.50, 18.58)
80	17.03 (16.92, 17.13)	- (- , -)	- (- , -)	21.04 (20.91, 21.17)	13.82 (13.78, 13.85)	
Black	0	0.12 (0.11, 0.13)	0.24 (0.23, 0.26)	0.54 (0.52, 0.56)	37.22 (36.93, 37.51)	21.31 (21.22, 21.40)
	10	0.12 (0.11, 0.13)	0.43 (0.41, 0.45)	1.31 (1.28, 1.35)	38.04 (37.74, 38.33)	21.84 (21.74, 21.93)
	20	0.31 (0.29, 0.33)	1.20 (1.17, 1.23)	3.86 (3.80, 3.92)	38.17 (37.87, 38.47)	21.93 (21.84, 22.02)
	30	0.91 (0.88, 0.93)	3.62 (3.56, 3.67)	10.58 (10.48, 10.69)	38.58 (38.27, 38.88)	22.20 (22.11, 22.29)
	40	2.80 (2.75, 2.84)	9.98 (9.87, 10.09)	21.48 (21.29, 21.66)	38.85 (38.54, 39.16)	22.49 (22.39, 22.58)
	50	7.71 (7.61, 7.81)	20.05 (19.86, 20.24)	31.40 (31.13, 31.67)	38.70 (38.37, 39.03)	22.63 (22.53, 22.73)
	60	14.56 (14.38, 14.74)	27.95 (27.67, 28.24)	34.71 (34.37, 35.05)	36.56 (36.20, 36.93)	21.96 (21.85, 22.07)
	70	18.51 (18.24, 18.78)	27.85 (27.48, 28.22)	- (- , -)	30.41 (30.00, 30.82)	19.62 (19.50, 19.74)
80	16.73 (16.36, 17.11)	- (- , -)	- (- , -)	21.31 (20.83, 21.81)	15.32 (15.18, 15.46)	

Devcan Version 6.2.0, April 2006, National Cancer Institute (<http://srab.cancer.gov/devcan/>).

Source: Incidence data are from the SEER 17 areas (San Francisco, Connecticut, Detroit, Hawaii, Iowa, New Mexico, Seattle, Utah, Atlanta, San Jose-Monterey, Los Angeles, Alaska Native Registry, Rural Georgia, California excluding SF/SJM/LA, Kentucky, Louisiana and New Jersey). Mortality data are from the NCHS public use data file for the total US.

- Statistic could not be calculated.

A percent or confidence interval value of 0.00 represents a value that is below 0.005.

Table II-9 - continued
 ALL CANCER SITES (Invasive)

Risk of Being Diagnosed With Cancer in 10, 20 and 30 Years, Lifetime Risk of Being Diagnosed with Cancer, and
 Lifetime Risk of Dying from Cancer Given Cancer Free At Current Age
 Both Sexes, 2002-2004 By Race/Ethnicity

Race/ Ethnicity	Current Age	Risk of Being Diagnosed with Cancer				Risk of Dying from Cancer	
		+10 yrs Percent (95% C.I.)	+20 yrs Percent (95% C.I.)	+30 yrs Percent (95% C.I.)	Eventually Percent (95% C.I.)	Eventually Percent (95% C.I.)	
Asian/ Pacific Islander	0	0.14 (0.12, 0.15)	0.26 (0.24, 0.28)	0.53 (0.51, 0.56)	35.73 (35.31, 36.15)	18.32 (18.04, 18.61)	
	10	0.12 (0.11, 0.14)	0.40 (0.38, 0.42)	1.15 (1.12, 1.18)	35.95 (35.54, 36.38)	18.46 (18.18, 18.75)	
	20	0.28 (0.26, 0.29)	1.03 (1.00, 1.06)	3.00 (2.94, 3.05)	35.96 (35.54, 36.38)	18.48 (18.20, 18.77)	
	30	0.76 (0.73, 0.78)	2.74 (2.69, 2.79)	6.85 (6.76, 6.95)	35.92 (35.51, 36.35)	18.51 (18.23, 18.80)	
	40	2.01 (1.96, 2.05)	6.17 (6.08, 6.26)	13.89 (13.73, 14.05)	35.59 (35.17, 36.02)	18.48 (18.19, 18.77)	
	50	4.29 (4.21, 4.36)	12.24 (12.08, 12.40)	22.90 (22.65, 23.15)	34.58 (34.15, 35.02)	18.24 (17.95, 18.54)	
	60	8.47 (8.33, 8.61)	19.84 (19.59, 20.09)	28.61 (28.26, 28.96)	32.30 (31.84, 32.76)	17.52 (17.22, 17.83)	
	70	13.09 (12.88, 13.31)	23.20 (22.85, 23.55)	- (- , -)	27.44 (26.96, 27.94)	15.90 (15.58, 16.22)	
	80	13.70 (13.37, 14.04)	- (- , -)	- (- , -)	19.46 (18.90, 20.04)	12.82 (12.45, 13.19)	
American Indian/ Alaska Native ^a	0	0.14 (0.10, 0.20)	0.26 (0.21, 0.33)	0.49 (0.42, 0.58)	26.34 (25.16, 27.63)	16.87 (16.34, 17.43)	
	10	0.12 (0.09, 0.16)	0.36 (0.30, 0.42)	1.03 (0.92, 1.15)	26.69 (25.49, 28.00)	17.16 (16.62, 17.73)	
	20	0.23 (0.19, 0.29)	0.91 (0.81, 1.03)	2.45 (2.28, 2.63)	26.80 (25.59, 28.12)	17.29 (16.74, 17.86)	
	30	0.69 (0.61, 0.79)	2.26 (2.09, 2.43)	6.16 (5.84, 6.49)	27.06 (25.84, 28.41)	17.55 (17.00, 18.14)	
	40	1.62 (1.48, 1.76)	5.64 (5.33, 5.96)	12.52 (11.94, 13.11)	27.23 (25.97, 28.62)	17.89 (17.32, 18.50)	
	50	4.24 (3.96, 4.53)	11.48 (10.90, 12.08)	19.72 (18.83, 20.65)	26.97 (25.65, 28.42)	18.20 (17.61, 18.84)	
	60	7.99 (7.47, 8.53)	17.09 (16.18, 18.04)	23.23 (22.02, 24.51)	25.09 (23.69, 26.64)	17.90 (17.25, 18.57)	
	70	11.16 (10.33, 12.03)	18.68 (17.40, 20.04)	- (- , -)	20.95 (19.41, 22.69)	16.45 (15.73, 17.22)	
	80	11.13 (9.88, 12.50)	- (- , -)	- (- , -)	14.49 (12.73, 16.58)	13.14 (12.24, 14.11)	
Hispanic ^b	0	0.16 (0.16, 0.17)	0.32 (0.31, 0.33)	0.64 (0.62, 0.65)	37.25 (36.88, 37.62)	17.39 (17.23, 17.55)	
	10	0.16 (0.15, 0.16)	0.48 (0.46, 0.49)	1.22 (1.20, 1.24)	37.55 (37.18, 37.93)	17.57 (17.41, 17.73)	
	20	0.32 (0.31, 0.33)	1.07 (1.05, 1.09)	2.94 (2.90, 2.98)	37.60 (37.22, 37.98)	17.61 (17.45, 17.77)	
	30	0.75 (0.74, 0.77)	2.65 (2.61, 2.68)	7.14 (7.06, 7.22)	37.67 (37.29, 38.06)	17.70 (17.54, 17.86)	
	40	1.92 (1.89, 1.96)	6.49 (6.42, 6.57)	15.43 (15.28, 15.58)	37.53 (37.14, 37.92)	17.75 (17.59, 17.92)	
	50	4.74 (4.67, 4.81)	14.02 (13.87, 14.17)	25.73 (25.49, 25.98)	36.96 (36.56, 37.36)	17.69 (17.53, 17.86)	
	60	10.09 (9.95, 10.23)	22.84 (22.59, 23.09)	31.48 (31.15, 31.82)	35.05 (34.63, 35.48)	17.14 (16.97, 17.31)	
	70	15.38 (15.16, 15.61)	25.81 (25.46, 26.17)	- (- , -)	30.12 (29.65, 30.60)	15.57 (15.39, 15.76)	
	80	15.39 (15.04, 15.75)	- (- , -)	- (- , -)	21.75 (21.17, 22.35)	12.47 (12.26, 12.69)	

Devcan Version 6.2.0, April 2006, National Cancer Institute (<http://srab.cancer.gov/devcan/>).

Source: Incidence data are from the SEER 17 areas (San Francisco, Connecticut, Detroit, Hawaii, Iowa, New Mexico, Seattle, Utah, Atlanta, San Jose-Monterey, Los Angeles, Alaska Native Registry, Rural Georgia, California excluding SF/SJM/LA, Kentucky, Louisiana and New Jersey). Mortality data are from the NCHS public use data file for the total US.

^a Underlying incidence and mortality data for American Indian/Alaska Native are based on the CHSDA (Contract Health Service Delivery Area) counties.

^b Hispanic is not mutually exclusive from whites, blacks, Asian/Pacific Islanders, and American Indians/Alaska Natives. Underlying incidence data for Hispanics are based on NHIA and exclude cases from the Alaska Native Registry and Kentucky. Underlying mortality data for Hispanics exclude deaths from Minnesota, New Hampshire and North Dakota.

- Statistic could not be calculated.

A percent or confidence interval value of 0.00 represents a value that is below 0.005.

Table II-9 - continued
ALL CANCER SITES (Invasive)

Risk of Being Diagnosed With Cancer in 10, 20 and 30 Years, Lifetime Risk of Being Diagnosed with Cancer, and
 Lifetime Risk of Dying from Cancer Given Cancer Free At Current Age
 Males, 2002-2004 By Race/Ethnicity

Race/ Ethnicity	Current Age	Risk of Being Diagnosed with Cancer			Risk of Dying from Cancer	
		+10 yrs Percent (95% C.I.)	+20 yrs Percent (95% C.I.)	+30 yrs Percent (95% C.I.)	Eventually Percent (95% C.I.)	Eventually Percent (95% C.I.)
All Races	0	0.17 (0.17, 0.18)	0.35 (0.34, 0.36)	0.72 (0.70, 0.73)	44.94 (44.79, 45.09)	23.31 (23.27, 23.36)
	10	0.18 (0.18, 0.19)	0.55 (0.54, 0.56)	1.26 (1.25, 1.28)	45.45 (45.30, 45.60)	23.65 (23.60, 23.70)
	20	0.37 (0.36, 0.38)	1.09 (1.08, 1.11)	3.07 (3.05, 3.09)	45.59 (45.44, 45.74)	23.76 (23.71, 23.80)
	30	0.73 (0.72, 0.74)	2.74 (2.72, 2.76)	9.11 (9.07, 9.16)	45.95 (45.80, 46.10)	24.02 (23.97, 24.06)
	40	2.06 (2.04, 2.08)	8.58 (8.53, 8.62)	22.17 (22.08, 22.25)	46.26 (46.10, 46.42)	24.29 (24.24, 24.34)
	50	6.86 (6.82, 6.90)	21.16 (21.07, 21.25)	36.84 (36.70, 36.97)	46.50 (46.34, 46.67)	24.54 (24.49, 24.59)
	60	16.25 (16.16, 16.33)	34.06 (33.92, 34.20)	43.07 (42.90, 43.23)	45.04 (44.87, 45.22)	24.11 (24.06, 24.17)
	70	24.10 (23.96, 24.23)	36.28 (36.10, 36.47)	- (- , -)	38.96 (38.76, 39.16)	21.93 (21.87, 21.98)
80	22.71 (22.52, 22.91)	- (- , -)	- (- , -)	27.70 (27.45, 27.95)	17.43 (17.36, 17.50)	
White	0	0.18 (0.17, 0.19)	0.37 (0.36, 0.38)	0.77 (0.76, 0.79)	44.89 (44.73, 45.06)	23.41 (23.36, 23.46)
	10	0.19 (0.19, 0.20)	0.60 (0.58, 0.61)	1.34 (1.32, 1.36)	45.31 (45.15, 45.47)	23.70 (23.65, 23.75)
	20	0.40 (0.40, 0.41)	1.16 (1.14, 1.17)	3.12 (3.10, 3.15)	45.43 (45.26, 45.60)	23.80 (23.75, 23.85)
	30	0.76 (0.75, 0.77)	2.76 (2.73, 2.78)	9.02 (8.97, 9.07)	45.72 (45.56, 45.89)	24.03 (23.98, 24.08)
	40	2.04 (2.02, 2.06)	8.45 (8.40, 8.50)	22.06 (21.96, 22.15)	45.97 (45.80, 46.14)	24.27 (24.22, 24.32)
	50	6.73 (6.68, 6.77)	21.02 (20.92, 21.12)	36.69 (36.55, 36.84)	46.14 (45.96, 46.32)	24.49 (24.43, 24.54)
	60	16.16 (16.07, 16.26)	33.88 (33.73, 34.04)	42.70 (42.52, 42.88)	44.57 (44.38, 44.76)	24.03 (23.97, 24.08)
	70	23.86 (23.71, 24.00)	35.73 (35.53, 35.93)	- (- , -)	38.24 (38.03, 38.46)	21.78 (21.72, 21.84)
80	22.07 (21.86, 22.27)	- (- , -)	- (- , -)	26.73 (26.47, 27.00)	17.23 (17.16, 17.30)	
Black	0	0.13 (0.11, 0.14)	0.25 (0.23, 0.27)	0.50 (0.47, 0.53)	42.33 (41.87, 42.79)	23.70 (23.56, 23.84)
	10	0.13 (0.12, 0.14)	0.38 (0.36, 0.41)	1.01 (0.97, 1.05)	43.38 (42.91, 43.85)	24.35 (24.20, 24.49)
	20	0.26 (0.24, 0.28)	0.89 (0.85, 0.93)	3.30 (3.23, 3.37)	43.67 (43.19, 44.15)	24.51 (24.37, 24.65)
	30	0.65 (0.62, 0.68)	3.13 (3.05, 3.20)	11.72 (11.55, 11.88)	44.59 (44.10, 45.08)	25.01 (24.87, 25.16)
	40	2.57 (2.50, 2.63)	11.48 (11.31, 11.65)	26.49 (26.18, 26.80)	45.57 (45.06, 46.08)	25.61 (25.46, 25.76)
	50	9.67 (9.51, 9.83)	25.96 (25.63, 26.28)	39.67 (39.22, 40.12)	46.66 (46.12, 47.20)	26.26 (26.10, 26.42)
	60	20.23 (19.90, 20.55)	37.25 (36.75, 37.76)	44.28 (43.69, 44.87)	45.93 (45.31, 46.57)	26.33 (26.15, 26.50)
	70	26.64 (26.10, 27.19)	37.64 (36.92, 38.36)	- (- , -)	40.23 (39.44, 41.03)	24.68 (24.47, 24.88)
80	24.53 (23.67, 25.41)	- (- , -)	- (- , -)	30.31 (29.19, 31.47)	20.86 (20.59, 21.14)	

Devcan Version 6.2.0, April 2006, National Cancer Institute (<http://srab.cancer.gov/devcan/>).

Source: Incidence data are from the SEER 17 areas (San Francisco, Connecticut, Detroit, Hawaii, Iowa, New Mexico, Seattle, Utah, Atlanta, San Jose-Monterey, Los Angeles, Alaska Native Registry, Rural Georgia, California excluding SF/SJM/LA, Kentucky, Louisiana and New Jersey). Mortality data are from the NCHS public use data file for the total US.

- Statistic could not be calculated.

A percent or confidence interval value of 0.00 represents a value that is below 0.005.

Table II-9 - continued
ALL CANCER SITES (Invasive)

Risk of Being Diagnosed With Cancer in 10, 20 and 30 Years, Lifetime Risk of Being Diagnosed with Cancer, and
 Lifetime Risk of Dying from Cancer Given Cancer Free At Current Age
 Males, 2002-2004 By Race/Ethnicity

Race/ Ethnicity	Current Age	Risk of Being Diagnosed with Cancer				Risk of Dying from Cancer	
		+10 yrs Percent (95% C.I.)	+20 yrs Percent (95% C.I.)	+30 yrs Percent (95% C.I.)	Eventually Percent (95% C.I.)	Eventually Percent (95% C.I.)	
Asian/ Pacific Islander	0	0.15 (0.13, 0.17)	0.27 (0.25, 0.30)	0.49 (0.45, 0.52)	39.83 (39.21, 40.48)	20.73 (20.32, 21.16)	
	10	0.13 (0.11, 0.14)	0.34 (0.32, 0.37)	0.80 (0.77, 0.85)	40.13 (39.50, 40.78)	20.90 (20.48, 21.34)	
	20	0.22 (0.20, 0.24)	0.68 (0.65, 0.72)	1.95 (1.89, 2.01)	40.18 (39.54, 40.83)	20.94 (20.52, 21.38)	
	30	0.47 (0.44, 0.49)	1.75 (1.69, 1.81)	5.52 (5.40, 5.64)	40.27 (39.63, 40.93)	21.01 (20.58, 21.44)	
	40	1.29 (1.25, 1.34)	5.11 (4.99, 5.23)	14.39 (14.15, 14.64)	40.24 (39.60, 40.91)	21.02 (20.59, 21.46)	
	50	3.92 (3.81, 4.02)	13.45 (13.20, 13.69)	27.27 (26.85, 27.68)	39.98 (39.32, 40.66)	20.89 (20.46, 21.34)	
	60	10.20 (9.98, 10.43)	25.00 (24.58, 25.42)	35.15 (34.58, 35.72)	38.61 (37.92, 39.33)	20.35 (19.90, 20.81)	
	70	17.68 (17.30, 18.08)	29.81 (29.21, 30.42)	- (- , -)	33.95 (33.18, 34.75)	18.81 (18.33, 19.31)	
	80	18.21 (17.60, 18.84)	- (- , -)	- (- , -)	24.43 (23.49, 25.41)	15.46 (14.89, 16.06)	
American Indian/ Alaska Native ^a	0	0.13 (0.08, 0.21)	0.26 (0.19, 0.36)	0.46 (0.36, 0.58)	26.35 (24.64, 28.34)	17.20 (16.42, 18.05)	
	10	0.14 (0.09, 0.19)	0.33 (0.26, 0.43)	0.88 (0.74, 1.03)	26.78 (25.04, 28.81)	17.54 (16.74, 18.41)	
	20	0.20 (0.14, 0.28)	0.75 (0.62, 0.90)	1.92 (1.70, 2.15)	26.96 (25.20, 29.01)	17.71 (16.91, 18.59)	
	30	0.56 (0.45, 0.69)	1.76 (1.56, 1.98)	5.58 (5.15, 6.04)	27.45 (25.64, 29.55)	18.12 (17.30, 19.02)	
	40	1.25 (1.08, 1.43)	5.22 (4.79, 5.67)	12.91 (12.06, 13.80)	27.98 (26.11, 30.16)	18.71 (17.85, 19.64)	
	50	4.22 (3.82, 4.64)	12.38 (11.51, 13.29)	21.27 (19.92, 22.69)	28.37 (26.40, 30.67)	19.37 (18.46, 20.36)	
	60	9.14 (8.33, 10.00)	19.10 (17.70, 20.59)	25.48 (23.61, 27.48)	27.05 (24.92, 29.57)	19.45 (18.45, 20.53)	
	70	12.62 (11.32, 14.02)	20.69 (18.67, 22.89)	- (- , -)	22.68 (20.29, 25.60)	18.33 (17.16, 19.61)	
	80	12.97 (10.84, 15.41)	- (- , -)	- (- , -)	16.17 (13.25, 20.04)	15.20 (13.66, 16.95)	
Hispanic ^b	0	0.17 (0.16, 0.19)	0.34 (0.33, 0.36)	0.62 (0.60, 0.65)	41.57 (40.99, 42.18)	19.80 (19.55, 20.06)	
	10	0.17 (0.16, 0.18)	0.46 (0.44, 0.47)	0.96 (0.93, 0.98)	41.97 (41.37, 42.58)	20.03 (19.77, 20.29)	
	20	0.29 (0.28, 0.30)	0.79 (0.77, 0.82)	2.12 (2.08, 2.17)	42.10 (41.50, 42.72)	20.11 (19.85, 20.37)	
	30	0.51 (0.49, 0.53)	1.86 (1.81, 1.90)	6.30 (6.19, 6.40)	42.40 (41.79, 43.02)	20.29 (20.03, 20.56)	
	40	1.37 (1.33, 1.41)	5.89 (5.79, 5.99)	16.97 (16.74, 17.20)	42.64 (42.02, 43.28)	20.47 (20.20, 20.74)	
	50	4.70 (4.61, 4.80)	16.23 (15.99, 16.47)	30.99 (30.59, 31.38)	42.94 (42.30, 43.60)	20.65 (20.38, 20.93)	
	60	12.72 (12.50, 12.95)	29.01 (28.59, 29.43)	38.58 (38.03, 39.14)	42.20 (41.50, 42.92)	20.42 (20.14, 20.72)	
	70	20.76 (20.35, 21.16)	32.96 (32.34, 33.59)	- (- , -)	37.57 (36.75, 38.43)	19.09 (18.77, 19.42)	
	80	20.38 (19.69, 21.08)	- (- , -)	- (- , -)	28.08 (26.95, 29.27)	16.01 (15.61, 16.43)	

Devcan Version 6.2.0, April 2006, National Cancer Institute (<http://srab.cancer.gov/devcan/>).

Source: Incidence data are from the SEER 17 areas (San Francisco, Connecticut, Detroit, Hawaii, Iowa, New Mexico, Seattle, Utah, Atlanta, San Jose-Monterey, Los Angeles, Alaska Native Registry, Rural Georgia, California excluding SF/SJM/LA, Kentucky, Louisiana and New Jersey). Mortality data are from the NCHS public use data file for the total US.

^a Underlying incidence and mortality data for American Indian/Alaska Native are based on the CHSDA (Contract Health Service Delivery Area) counties.

^b Hispanic is not mutually exclusive from whites, blacks, Asian/Pacific Islanders, and American Indians/Alaska Natives. Underlying incidence data for Hispanics are based on NHIA and exclude cases from the Alaska Native Registry and Kentucky. Underlying mortality data for Hispanics exclude deaths from Minnesota, New Hampshire and North Dakota.

- Statistic could not be calculated.

A percent or confidence interval value of 0.00 represents a value that is below 0.005.

Table II-9 - continued
ALL CANCER SITES (Invasive)

Risk of Being Diagnosed With Cancer in 10, 20 and 30 Years, Lifetime Risk of Being Diagnosed with Cancer, and
 Lifetime Risk of Dying from Cancer Given Cancer Free At Current Age
 Females, 2002-2004 By Race/Ethnicity

Race/ Ethnicity	Current Age	Risk of Being Diagnosed with Cancer				Risk of Dying from Cancer	
		+10 yrs Percent (95% C.I.)	+20 yrs Percent (95% C.I.)	+30 yrs Percent (95% C.I.)	Eventually Percent (95% C.I.)	Eventually Percent (95% C.I.)	
All Races	0	0.15 (0.14, 0.16)	0.31 (0.30, 0.32)	0.79 (0.77, 0.80)	37.52 (37.40, 37.65)	19.74 (19.70, 19.78)	
	10	0.16 (0.16, 0.17)	0.64 (0.63, 0.66)	1.92 (1.90, 1.94)	37.84 (37.72, 37.97)	19.96 (19.92, 20.00)	
	20	0.48 (0.47, 0.49)	1.76 (1.74, 1.78)	4.82 (4.79, 4.85)	37.83 (37.70, 37.95)	19.99 (19.95, 20.03)	
	30	1.29 (1.27, 1.30)	4.38 (4.35, 4.40)	10.08 (10.04, 10.13)	37.69 (37.56, 37.81)	20.04 (20.00, 20.08)	
	40	3.15 (3.12, 3.17)	8.97 (8.93, 9.02)	18.00 (17.93, 18.08)	37.12 (37.00, 37.25)	20.02 (19.98, 20.06)	
	50	6.10 (6.06, 6.13)	15.56 (15.48, 15.63)	26.34 (26.24, 26.45)	35.58 (35.45, 35.71)	19.75 (19.71, 19.79)	
	60	10.36 (10.30, 10.42)	22.18 (22.07, 22.28)	30.10 (29.97, 30.22)	32.29 (32.16, 32.43)	18.70 (18.66, 18.74)	
	70	14.18 (14.09, 14.26)	23.68 (23.56, 23.80)	- (- , -)	26.31 (26.18, 26.45)	16.16 (16.11, 16.20)	
80	13.84 (13.74, 13.95)	- (- , -)	- (- , -)	17.68 (17.55, 17.82)	11.87 (11.83, 11.91)		
White	0	0.15 (0.15, 0.16)	0.33 (0.32, 0.34)	0.83 (0.82, 0.85)	38.46 (38.32, 38.60)	19.96 (19.91, 20.00)	
	10	0.17 (0.17, 0.18)	0.69 (0.67, 0.70)	2.00 (1.98, 2.02)	38.73 (38.59, 38.87)	20.14 (20.10, 20.19)	
	20	0.52 (0.50, 0.53)	1.83 (1.81, 1.86)	4.94 (4.91, 4.98)	38.71 (38.57, 38.85)	20.17 (20.13, 20.22)	
	30	1.33 (1.31, 1.35)	4.47 (4.44, 4.50)	10.31 (10.25, 10.36)	38.54 (38.40, 38.68)	20.21 (20.17, 20.26)	
	40	3.20 (3.17, 3.23)	9.15 (9.10, 9.20)	18.50 (18.42, 18.59)	37.95 (37.80, 38.09)	20.19 (20.15, 20.23)	
	50	6.23 (6.19, 6.27)	16.01 (15.93, 16.10)	27.13 (27.01, 27.25)	36.35 (36.21, 36.50)	19.90 (19.86, 19.95)	
	60	10.71 (10.63, 10.78)	22.87 (22.75, 22.98)	30.85 (30.71, 30.99)	32.96 (32.81, 33.11)	18.84 (18.80, 18.89)	
	70	14.61 (14.52, 14.71)	24.20 (24.07, 24.34)	- (- , -)	26.74 (26.59, 26.89)	16.24 (16.19, 16.28)	
80	14.05 (13.93, 14.17)	- (- , -)	- (- , -)	17.77 (17.62, 17.92)	11.85 (11.81, 11.90)		
Black	0	0.12 (0.10, 0.13)	0.23 (0.21, 0.25)	0.58 (0.55, 0.61)	32.66 (32.29, 33.03)	19.39 (19.27, 19.51)	
	10	0.12 (0.11, 0.13)	0.48 (0.45, 0.50)	1.60 (1.55, 1.65)	33.28 (32.91, 33.67)	19.81 (19.69, 19.93)	
	20	0.36 (0.34, 0.38)	1.49 (1.44, 1.54)	4.39 (4.30, 4.47)	33.30 (32.92, 33.68)	19.85 (19.72, 19.97)	
	30	1.14 (1.10, 1.18)	4.07 (3.99, 4.15)	9.59 (9.45, 9.73)	33.30 (32.92, 33.68)	19.94 (19.81, 20.06)	
	40	3.01 (2.94, 3.08)	8.67 (8.53, 8.81)	17.04 (16.81, 17.26)	32.99 (32.60, 33.38)	19.99 (19.87, 20.12)	
	50	6.02 (5.90, 6.14)	14.92 (14.70, 15.14)	24.25 (23.93, 24.57)	31.88 (31.48, 32.29)	19.76 (19.63, 19.89)	
	60	10.06 (9.87, 10.26)	20.62 (20.29, 20.94)	27.19 (26.79, 27.59)	29.25 (28.82, 29.68)	18.72 (18.58, 18.85)	
	70	13.32 (13.03, 13.60)	21.61 (21.21, 22.02)	- (- , -)	24.21 (23.75, 24.67)	16.31 (16.17, 16.45)	
80	13.07 (12.69, 13.46)	- (- , -)	- (- , -)	17.17 (16.67, 17.68)	12.48 (12.33, 12.65)		

Devcan Version 6.2.0, April 2006, National Cancer Institute (<http://srab.cancer.gov/devcan/>).

Source: Incidence data are from the SEER 17 areas (San Francisco, Connecticut, Detroit, Hawaii, Iowa, New Mexico, Seattle, Utah, Atlanta, San Jose-Monterey, Los Angeles, Alaska Native Registry, Rural Georgia, California excluding SF/SJM/LA, Kentucky, Louisiana and New Jersey). Mortality data are from the NCHS public use data file for the total US.

- Statistic could not be calculated.

A percent or confidence interval value of 0.00 represents a value that is below 0.005.

Table II-9 - continued
ALL CANCER SITES (Invasive)

Risk of Being Diagnosed With Cancer in 10, 20 and 30 Years, Lifetime Risk of Being Diagnosed with Cancer, and
 Lifetime Risk of Dying from Cancer Given Cancer Free At Current Age
 Females, 2002-2004 By Race/Ethnicity

Race/ Ethnicity	Current Age	Risk of Being Diagnosed with Cancer				Risk of Dying from Cancer	
		+10 yrs Percent (95% C.I.)	+20 yrs Percent (95% C.I.)	+30 yrs Percent (95% C.I.)	Eventually Percent (95% C.I.)	Eventually Percent (95% C.I.)	
Asian/ Pacific Islander	0	0.13 (0.11, 0.15)	0.25 (0.22, 0.27)	0.58 (0.54, 0.61)	32.32 (31.78, 32.88)	16.26 (15.88, 16.65)	
	10	0.12 (0.11, 0.14)	0.45 (0.42, 0.49)	1.48 (1.42, 1.53)	32.50 (31.95, 33.06)	16.37 (15.99, 16.76)	
	20	0.33 (0.31, 0.36)	1.36 (1.31, 1.41)	3.96 (3.88, 4.05)	32.46 (31.92, 33.03)	16.38 (16.00, 16.77)	
	30	1.03 (0.99, 1.07)	3.65 (3.57, 3.74)	8.07 (7.94, 8.21)	32.31 (31.76, 32.88)	16.38 (16.00, 16.78)	
	40	2.66 (2.59, 2.72)	7.14 (7.00, 7.27)	13.51 (13.30, 13.73)	31.69 (31.14, 32.27)	16.31 (15.93, 16.71)	
	50	4.63 (4.52, 4.73)	11.21 (11.01, 11.42)	19.34 (19.03, 19.65)	29.99 (29.42, 30.57)	15.99 (15.60, 16.39)	
	60	7.00 (6.83, 7.17)	15.63 (15.33, 15.93)	23.16 (22.74, 23.59)	26.94 (26.35, 27.55)	15.15 (14.76, 15.56)	
	70	9.64 (9.40, 9.89)	18.06 (17.65, 18.48)	- (- , -)	22.28 (21.67, 22.93)	13.54 (13.13, 13.97)	
	80	10.63 (10.25, 11.01)	- (- , -)	- (- , -)	15.96 (15.27, 16.69)	10.80 (10.34, 11.28)	
American Indian/ Alaska Native ^a	0	0.15 (0.09, 0.24)	0.26 (0.19, 0.36)	0.53 (0.42, 0.66)	26.45 (24.82, 28.29)	16.71 (15.98, 17.50)	
	10	0.11 (0.07, 0.16)	0.38 (0.29, 0.48)	1.18 (1.02, 1.37)	26.71 (25.06, 28.58)	16.97 (16.22, 17.77)	
	20	0.27 (0.20, 0.36)	1.08 (0.92, 1.26)	2.98 (2.71, 3.26)	26.75 (25.09, 28.63)	17.04 (16.29, 17.85)	
	30	0.82 (0.69, 0.97)	2.74 (2.48, 3.01)	6.72 (6.25, 7.20)	26.79 (25.11, 28.69)	17.17 (16.41, 17.99)	
	40	1.97 (1.76, 2.19)	6.04 (5.60, 6.51)	12.17 (11.39, 12.98)	26.61 (24.90, 28.55)	17.29 (16.52, 18.12)	
	50	4.26 (3.88, 4.67)	10.66 (9.89, 11.47)	18.34 (17.16, 19.58)	25.75 (23.99, 27.76)	17.31 (16.51, 18.17)	
	60	6.97 (6.31, 7.67)	15.33 (14.16, 16.58)	21.30 (19.72, 22.99)	23.40 (21.55, 25.53)	16.71 (15.87, 17.62)	
	70	9.97 (8.92, 11.10)	17.08 (15.45, 18.84)	- (- , -)	19.58 (17.59, 21.92)	15.11 (14.18, 16.11)	
	80	9.87 (8.38, 11.56)	- (- , -)	- (- , -)	13.35 (11.20, 16.04)	11.87 (10.79, 13.09)	
Hispanic ^b	0	0.15 (0.14, 0.17)	0.30 (0.28, 0.31)	0.65 (0.63, 0.68)	33.95 (33.47, 34.43)	15.62 (15.42, 15.82)	
	10	0.14 (0.13, 0.15)	0.50 (0.48, 0.52)	1.52 (1.49, 1.56)	34.18 (33.70, 34.67)	15.76 (15.56, 15.97)	
	20	0.36 (0.35, 0.38)	1.38 (1.35, 1.42)	3.83 (3.77, 3.90)	34.15 (33.67, 34.64)	15.77 (15.56, 15.98)	
	30	1.03 (1.00, 1.06)	3.50 (3.43, 3.56)	8.06 (7.95, 8.18)	34.01 (33.53, 34.51)	15.78 (15.57, 15.99)	
	40	2.50 (2.45, 2.56)	7.14 (7.03, 7.25)	14.18 (13.99, 14.38)	33.47 (32.98, 33.97)	15.72 (15.51, 15.93)	
	50	4.80 (4.70, 4.89)	12.10 (11.91, 12.29)	21.28 (20.99, 21.58)	32.07 (31.57, 32.59)	15.46 (15.25, 15.67)	
	60	7.84 (7.67, 8.00)	17.70 (17.41, 17.99)	25.64 (25.24, 26.06)	29.28 (28.76, 29.83)	14.70 (14.49, 14.92)	
	70	11.38 (11.12, 11.63)	20.54 (20.13, 20.96)	- (- , -)	24.74 (24.18, 25.33)	13.14 (12.91, 13.36)	
	80	12.42 (12.02, 12.83)	- (- , -)	- (- , -)	18.12 (17.46, 18.80)	10.40 (10.14, 10.65)	

Devcan Version 6.2.0, April 2006, National Cancer Institute (<http://srab.cancer.gov/devcan/>).

Source: Incidence data are from the SEER 17 areas (San Francisco, Connecticut, Detroit, Hawaii, Iowa, New Mexico, Seattle, Utah, Atlanta, San Jose-Monterey, Los Angeles, Alaska Native Registry, Rural Georgia, California excluding SF/SJM/LA, Kentucky, Louisiana and New Jersey). Mortality data are from the NCHS public use data file for the total US.

^a Underlying incidence and mortality data for American Indian/Alaska Native are based on the CHSDA (Contract Health Service Delivery Area) counties.

^b Hispanic is not mutually exclusive from whites, blacks, Asian/Pacific Islanders, and American Indians/Alaska Natives. Underlying incidence data for Hispanics are based on NHIA and exclude cases from the Alaska Native Registry and Kentucky. Underlying mortality data for Hispanics exclude deaths from Minnesota, New Hampshire and North Dakota.

- Statistic could not be calculated.

A percent or confidence interval value of 0.00 represents a value that is below 0.005.

Table II-10
ALL CANCER SITES (Invasive)

SEER INCIDENCE AND U.S. MORTALITY
AGE-ADJUSTED RATES AND TRENDS^a
 By Race/Ethnicity and Sex

<u>SEER Incidence</u>	Rate 2000-2004 ^b			Trend 1995-2004 ^c		
	Rate per 100,000 persons			APC (%)		
	Total	Males	Females	Total	Males	Females
RACE/ETHNICITY						
All Races	470.1	555.8	411.3	-0.6*	-0.7*	-0.5*
White	477.5	556.7	423.9	-0.5	-0.6*	-0.4
White Hispanic ^d	361.6	426.2	320.5	-0.8*	-1.1*	-0.6
White Non-Hispanic ^d	494.3	573.6	439.9	-0.3	-0.5	-0.3
Black	504.1	663.7	396.9	-1.0*	-1.6*	-0.4
Asian/Pacific Islander	314.9	359.9	285.8	-0.6*	-0.8*	-0.2
Amer Ind/Alaska Nat ^e	297.6	321.2	282.4	-1.0	-1.7	-0.3
Hispanic ^d	356.0	421.3	314.2	-0.7*	-1.0*	-0.5
 <u>U.S. Mortality^f</u>						
	Rate 2000-2004			Trend 1995-2004		
	Rate per 100,000 persons			APC (%)		
	Total	Males	Females	Total	Males	Females
RACE/ETHNICITY						
All Races	192.7	238.7	162.2	-1.2*	-1.7*	-1.0*
White	190.7	234.7	161.4	-1.1*	-1.5*	-0.9*
White Hispanic ^d	133.9	167.6	111.0	-1.3*	-1.8*	-0.9*
White Non-Hispanic ^d	194.7	239.2	165.1	-1.0*	-1.4*	-0.8*
Black	238.8	321.8	189.3	-1.8*	-2.4*	-1.1*
Asian/Pacific Islander	115.5	141.7	96.7	-1.8*	-2.1*	-1.4*
Amer Ind/Alaska Nat						
Total U.S.	128.6	152.2	112.0	-1.5*	-2.4*	-1.0*
CHSDA Counties	160.4	187.9	141.2	-0.3	-0.8	0.1
Non-CHSDA Counties	86.8	105.1	73.7	-3.1*	-4.6*	-2.2*
Hispanic ^d	129.1	162.2	106.7	-1.3*	-1.9*	-0.9*

- The APC is the Annual Percent Change over the time interval.
 - Statistic not shown. Rate based on less than 16 cases for the time interval. Trend based on less than 10 cases for at least one year within the time interval.
 a Rates are age-adjusted to the 2000 US Std Population (19 age groups - Census P25-1130). Trends are based on rates age-adjusted to the 2000 US Std Population (19 age groups - Census P25-1130).
 b Incidence data used in calculating the rates are from the 17 SEER areas (San Francisco, Connecticut, Detroit, Hawaii, Iowa, New Mexico, Seattle, Utah, Atlanta, San Jose-Monterey, Los Angeles, Alaska Native Registry, Rural Georgia, California excluding SF/SJM/LA, Kentucky, Louisiana and New Jersey).
 c Incidence data used in calculating the trends are from the 13 SEER areas (San Francisco, Connecticut, Detroit, Hawaii, Iowa, New Mexico, Seattle, Utah, Atlanta, San Jose-Monterey, Los Angeles, Alaska Native Registry and Rural Georgia).
 d Hispanic and Non-Hispanic are not mutually exclusive from whites, blacks, Asian/Pacific Islanders, and American Indians/Alaska Natives. Incidence data for Hispanics and Non-Hispanics are based on NHIA and exclude cases from the Alaska Native Registry and Kentucky. The 2000-2004 Hispanic and Non-Hispanic death rates exclude deaths from Minnesota, New Hampshire and North Dakota. The 1995-2004 Hispanic and Non-Hispanic mortality trends exclude deaths from Maine, Minnesota, New Hampshire, North Dakota, and Oklahoma.
 e Incidence data for American Indian/Alaska Native are based on the CHSDA(Contract Health Service Delivery Area) counties.
 f Mortality data are analyzed from a public use file provided by the National Center for Health Statistics (NCHS).
 * The APC is significantly different from zero (p<.05).

Table II-11
ALL CANCER SITES (Invasive)

AGE-ADJUSTED SEER INCIDENCE RATES^a
By Registry, Race and Sex

	All Races			Whites			Blacks		
	Total	Males	Females	Total	Males	Females	Total	Males	Females
<u>SEER INCIDENCE RATES^a, 2000-2004</u>									
REGISTRY									
Atlanta & Rural Georgia	458.2	554.0	395.5	460.8	536.3	413.2	477.3	643.7	376.2
Atlanta	459.4	553.5	398.2	462.0	536.3	415.7	480.7	645.4	381.2
Rural Georgia	446.7	571.7	356.8	441.1	539.5	370.4	457.7	651.6	334.0
California	444.0	517.3	393.6	455.2	522.8	409.3	478.4	611.3	383.4
Greater Bay Area	439.1	511.0	390.2	464.5	533.6	418.0	471.7	588.2	387.4
San Francisco-Oakland	445.8	518.6	395.8	469.7	536.9	423.8	479.3	594.0	397.2
San Jose-Monterey	426.2	497.1	379.0	455.6	528.6	407.6	426.3	574.4	303.2
Los Angeles	432.3	509.6	380.8	439.6	506.7	396.4	490.4	639.4	389.4
Greater California	451.6	523.3	401.3	458.9	526.1	412.2	467.9	593.3	371.2
Connecticut	503.4	589.2	445.6	506.2	587.3	452.3	480.2	623.0	383.5
Detroit	530.0	655.3	445.6	525.9	632.8	456.0	563.1	761.8	430.4
Hawaii	416.1	482.0	372.1	509.9	593.7	445.5	332.6	444.8	196.9
Iowa	473.5	551.6	422.3	469.0	544.2	420.1	483.9	605.2	384.3
Kentucky	508.6	611.2	441.6	501.8	600.5	437.7	557.8	703.0	461.7
Louisiana	489.0	615.7	402.4	483.4	596.2	406.1	512.2	687.1	399.7
New Jersey	512.9	613.4	446.3	518.5	609.1	459.5	511.6	683.2	400.9
New Mexico	413.5	485.4	359.4	428.9	502.3	373.1	350.1	453.4	270.1
Seattle-Puget Sound	501.1	575.4	449.4	515.2	587.8	464.7	503.2	642.4	388.9
Utah	407.0	487.6	345.2	411.4	492.5	349.4	394.8	501.3	301.9
9 SEER Areas ^b	473.6	558.7	415.0	483.5	563.0	429.3	509.5	671.6	400.3
11 SEER Areas ^b	461.4	544.1	405.0	472.5	549.3	420.9	503.1	661.0	396.3
13 SEER Areas ^b	461.4	544.1	404.9	472.5	549.2	420.7	502.3	660.8	395.2
17 SEER Areas ^b	470.1	555.8	411.3	477.5	556.7	423.9	504.1	663.7	396.9

^a Rates are per 100,000 and are age-adjusted to the 2000 US Std Population (19 age groups - Census P25-1130)

^b The SEER 9 areas are San Francisco, Connecticut, Detroit, Hawaii, Iowa, New Mexico, Seattle, Utah and Atlanta.

The SEER 11 areas comprise the SEER 9 areas plus San Jose-Monterey and Los Angeles.

The SEER 13 areas comprise the SEER 11 areas plus the Alaska Native Registry and Rural Georgia.

The SEER 17 areas comprise the SEER 13 areas plus California excluding SF/SJM/LA, Kentucky, Louisiana and New Jersey

- Statistic not shown. Rate based on less than 16 cases for the time interval.

Table II-12
ALL CANCER SITES (Invasive)

AGE-ADJUSTED SEER DEATH RATES^a
 By Registry, Race and Sex

	<u>All Races</u>			<u>Whites</u>			<u>Blacks</u>		
	<u>Total</u>	<u>Males</u>	<u>Females</u>	<u>Total</u>	<u>Males</u>	<u>Females</u>	<u>Total</u>	<u>Males</u>	<u>Females</u>
<u>SEER DEATH RATES^a, 2000-2004</u>									
REGISTRY									
Atlanta & Rural Georgia	184.8	231.5	157.4	172.7	211.7	149.4	223.8	304.5	180.8
Atlanta	183.9	229.1	157.7	172.2	210.4	149.7	223.0	301.0	182.1
Rural Georgia	204.3	274.8	156.4	184.8	237.7	147.4	243.4	360.3	172.3
California	175.2	209.1	152.4	179.4	212.7	157.3	232.4	295.5	193.0
Greater Bay Area	167.9	198.5	148.1	174.5	202.6	157.2	242.5	308.8	200.0
San Francisco-Oakland	174.5	207.2	153.2	180.5	210.0	162.1	246.8	312.5	205.3
San Jose-Monterey	154.7	181.2	137.8	163.8	189.2	148.5	211.9	289.5	152.6
Los Angeles	168.3	201.8	146.4	169.3	201.1	149.0	232.7	297.8	194.3
Greater California	181.1	216.3	157.0	185.0	220.3	160.8	225.3	284.2	185.8
Connecticut	184.6	224.8	159.0	184.6	224.0	159.4	207.0	275.1	168.4
Detroit	202.2	249.6	172.5	194.0	237.6	166.9	241.0	309.8	197.6
Hawaii	151.0	191.8	120.6	178.4	223.5	144.3	110.9	144.8	79.0
Iowa	187.2	233.6	156.9	186.8	232.9	156.7	258.1	329.6	207.1
Kentucky	225.1	291.8	182.1	223.0	289.0	180.2	273.2	360.2	221.5
Louisiana	223.6	291.0	179.5	208.7	267.1	170.0	271.5	376.3	207.2
New Jersey	196.7	236.7	171.9	196.4	234.0	173.1	235.5	312.5	191.0
New Mexico	168.6	207.4	140.8	171.9	210.1	144.4	190.6	287.7	128.8
Seattle-Puget Sound	188.4	225.3	163.4	191.5	228.0	166.9	221.1	275.5	181.6
Utah	144.0	176.5	120.8	144.4	177.0	121.0	185.8	234.6	152.6
9 SEER Areas ^b	181.0	220.8	154.7	181.7	220.2	156.5	230.7	299.0	189.0
11 SEER Areas ^b	176.7	214.4	151.9	178.2	214.6	154.6	230.8	298.4	189.8
13 SEER Areas ^b	176.9	214.7	152.0	178.2	214.7	154.5	230.8	299.1	189.4
17 SEER Areas ^b	186.1	226.7	159.2	187.0	226.2	161.2	240.0	316.0	193.8
Total U.S.	192.7	238.7	162.2	190.7	234.7	161.4	238.8	321.8	189.3

^a NCHS public use data file for the total US. Rates are per 100,000 and are age-adjusted to the 2000 US Std Population (19 age groups - Census P25-1130).

^b The SEER 9 areas are San Francisco, Connecticut, Detroit, Hawaii, Iowa, New Mexico, Seattle, Utah and Atlanta.
 The SEER 11 areas comprise the SEER 9 areas plus San Jose-Monterey and Los Angeles.
 The SEER 13 areas comprise the SEER 11 areas plus the Alaska Native Registry and Rural Georgia.
 The SEER 17 areas comprise the SEER 13 areas plus California excluding SF/SJM/LA, Kentucky, Louisiana and New Jersey

- Statistic not shown. Rate based on less than 16 cases for the time interval.

Table II-13
ALL CANCER SITES (Invasive)

AVERAGE ANNUAL AGE-ADJUSTED CANCER DEATH^a RATES BY STATE, ALL RACES, 2000-2004

Males and Females

State	Rate	SE	Rank	PD	State	Rate	SE	Rank	PD
TOTAL U.S.	192.7	0.12							
High Five States									
Kentucky	225.1 ^b	1.05	(01)	16.8 ^c					
Louisiana	223.6 ^b	1.03	(02)	16.0 ^c					
District of Columbia	223.5 ^b	2.84	(03)	16.0 ^c					
West Virginia	216.3 ^b	1.42	(04)	12.2 ^c					
Mississippi	215.9 ^b	1.25	(05)	12.0 ^c					
Low Five States									
Arizona	172.2 ^b	0.80	(47)	-10.6 ^c					
Colorado	168.7 ^b	0.97	(48)	-12.5 ^c					
New Mexico	168.6 ^b	1.38	(49)	-12.5 ^c					
Hawaii	151.0 ^b	1.50	(50)	-21.6 ^c					
Utah	144.0 ^b	1.32	(51)	-25.3 ^c					
Alabama	209.3 ^b	0.95	(08)	8.6 ^c	Montana	188.5	1.95	(32)	-2.2
Alaska	192.9	3.50	(29)	0.1	Nebraska	181.4 ^b	1.41	(43)	-5.9 ^c
Arizona	172.2 ^b	0.80	(47)	-10.6 ^c	Nevada	203.3 ^b	1.47	(15)	5.5 ^c
Arkansas	209.3 ^b	1.19	(07)	8.6 ^c	New Hampshire	195.8	1.76	(27)	1.6
California	175.2 ^b	0.34	(45)	-9.1 ^c	New Jersey	196.7 ^b	0.66	(25)	2.1
Colorado	168.7 ^b	0.97	(48)	-12.5 ^c	New Mexico	168.6 ^b	1.38	(49)	-12.5 ^c
Connecticut	184.6 ^b	0.98	(38)	-4.2	New York	183.0 ^b	0.43	(41)	-5.0 ^c
Delaware	204.7 ^b	2.21	(12)	6.2 ^c	North Carolina	199.6 ^b	0.70	(20)	3.6
District of Columbia	223.5 ^b	2.84	(03)	16.0 ^c	North Dakota	177.8 ^b	2.21	(44)	-7.7 ^c
Florida	184.0 ^b	0.42	(39)	-4.5	Ohio	206.3 ^b	0.58	(11)	7.1 ^c
Georgia	199.9 ^b	0.76	(18)	3.7	Oklahoma	203.0 ^b	1.06	(16)	5.3 ^c
Hawaii	151.0 ^b	1.50	(50)	-21.6 ^c	Oregon	194.4	1.03	(28)	0.9
Idaho	174.6 ^b	1.68	(46)	-9.4 ^c	Pennsylvania	199.8 ^b	0.52	(19)	3.7
Illinois	201.4 ^b	0.57	(17)	4.5	Rhode Island	197.2	1.82	(24)	2.3
Indiana	208.2 ^b	0.82	(09)	8.0 ^c	South Carolina	204.6 ^b	1.01	(13)	6.2 ^c
Iowa	187.2 ^b	1.05	(36)	-2.9	South Dakota	185.0 ^b	2.09	(37)	-4.0
Kansas	187.2 ^b	1.15	(35)	-2.9	Tennessee	213.6 ^b	0.86	(06)	10.8 ^c
Kentucky	225.1 ^b	1.05	(01)	16.8 ^c	Texas	189.7 ^b	0.46	(31)	-1.6
Louisiana	223.6 ^b	1.03	(02)	16.0 ^c	Utah	144.0 ^b	1.32	(51)	-25.3 ^c
Maine	207.6 ^b	1.67	(10)	7.7 ^c	Vermont	187.3	2.40	(34)	-2.8
Maryland	199.5 ^b	0.88	(21)	3.5	Virginia	198.2 ^b	0.77	(22)	2.9
Massachusetts	197.4 ^b	0.76	(23)	2.4	Washington	190.2	0.82	(30)	-1.3
Michigan	196.6 ^b	0.63	(26)	2.0	West Virginia	216.3 ^b	1.42	(04)	12.2 ^c
Minnesota	183.1 ^b	0.86	(40)	-5.0 ^c	Wisconsin	187.5 ^b	0.81	(33)	-2.7
Mississippi	215.9 ^b	1.25	(05)	12.0 ^c	Wyoming	183.0	2.75	(42)	-5.0 ^c
Missouri	203.6 ^b	0.82	(14)	5.7 ^c					

^a NCHS public use data file. Rates are per 100,000 and are age-adjusted to the 2000 US Std Population (19 age groups - Census P25-1130).

^b Difference between state rate and total U.S. rate is statistically significant ($p < .0002$).

^c Absolute percent difference between state rate and total U.S. rate is 5% or more.

SE Standard error of the rate.

PD Percent difference between state rate and total U.S. rate.

Table II-14
ALL CANCER SITES (Invasive)AVERAGE ANNUAL AGE-ADJUSTED CANCER DEATH^a RATES BY STATE, ALL RACES, 2000-2004

Males

State	Rate	SE	Rank	PD	State	Rate	SE	Rank	PD
TOTAL U.S.	238.7	0.20							
High Five States									
Kentucky	291.8 ^b	1.91	(01)	22.2 ^c					
Louisiana	291.0 ^b	1.88	(02)	21.9 ^c					
Mississippi	290.7 ^b	2.32	(03)	21.8 ^c					
District of Columbia	289.7 ^b	5.20	(04)	21.4 ^c					
Alabama	279.0 ^b	1.76	(05)	16.9 ^c					
Low Five States									
Arizona	208.2 ^b	1.33	(47)	-12.8 ^c					
New Mexico	207.4 ^b	2.36	(48)	-13.1 ^c					
Colorado	203.7 ^b	1.68	(49)	-14.7 ^c					
Hawaii	191.8 ^b	2.56	(50)	-19.6 ^c					
Utah	176.5 ^b	2.25	(51)	-26.1 ^c					
Alabama	279.0 ^b	1.76	(05)	16.9 ^c	Montana	227.3	3.26	(36)	-4.8
Alaska	236.9	6.22	(28)	-0.8	Nebraska	223.0 ^b	2.41	(42)	-6.6 ^c
Arizona	208.2 ^b	1.33	(47)	-12.8 ^c	Nevada	238.8	2.44	(26)	0.0
Arkansas	271.3 ^b	2.13	(07)	13.7 ^c	New Hampshire	241.0	3.06	(25)	1.0
California	209.1 ^b	0.57	(46)	-12.4 ^c	New Jersey	236.7	1.14	(29)	-0.8
Colorado	203.7 ^b	1.68	(49)	-14.7 ^c	New Mexico	207.4 ^b	2.36	(48)	-13.1 ^c
Connecticut	224.8 ^b	1.70	(40)	-5.8 ^c	New York	221.9 ^b	0.75	(43)	-7.0 ^c
Delaware	252.6 ^b	3.85	(17)	5.8 ^c	North Carolina	258.6 ^b	1.29	(12)	8.3 ^c
District of Columbia	289.7 ^b	5.20	(04)	21.4 ^c	North Dakota	224.1 ^b	3.77	(41)	-6.1 ^c
Florida	226.0 ^b	0.70	(38)	-5.3 ^c	Ohio	257.4 ^b	1.03	(13)	7.8 ^c
Georgia	259.0 ^b	1.42	(11)	8.5 ^c	Oklahoma	256.8 ^b	1.86	(14)	7.6 ^c
Hawaii	191.8 ^b	2.56	(50)	-19.6 ^c	Oregon	231.4 ^b	1.72	(33)	-3.1
Idaho	210.8 ^b	2.81	(45)	-11.7 ^c	Pennsylvania	247.7 ^b	0.91	(20)	3.8
Illinois	250.9 ^b	1.01	(18)	5.1 ^c	Rhode Island	244.7	3.17	(21)	2.5
Indiana	262.0 ^b	1.46	(10)	9.8 ^c	South Carolina	270.7 ^b	1.86	(08)	13.4 ^c
Iowa	233.6	1.82	(30)	-2.1	South Dakota	231.2	3.57	(34)	-3.1
Kansas	231.7 ^b	1.98	(32)	-2.9	Tennessee	277.6 ^b	1.57	(06)	16.3 ^c
Kentucky	291.8 ^b	1.91	(01)	22.2 ^c	Texas	238.6	0.83	(27)	0.0
Louisiana	291.0 ^b	1.88	(02)	21.9 ^c	Utah	176.5 ^b	2.25	(51)	-26.1 ^c
Maine	255.6 ^b	2.89	(15)	7.1 ^c	Vermont	228.5	4.14	(35)	-4.3
Maryland	244.7 ^b	1.55	(22)	2.5	Virginia	249.1 ^b	1.38	(19)	4.4
Massachusetts	242.0	1.32	(24)	1.4	Washington	227.3 ^b	1.38	(37)	-4.8
Michigan	243.1 ^b	1.09	(23)	1.8	West Virginia	269.1 ^b	2.49	(09)	12.7 ^c
Minnesota	225.3 ^b	1.48	(39)	-5.6 ^c	Wisconsin	233.6 ^b	1.41	(31)	-2.1
Mississippi	290.7 ^b	2.32	(03)	21.8 ^c	Wyoming	218.4 ^b	4.66	(44)	-8.5 ^c
Missouri	254.2 ^b	1.44	(16)	6.5 ^c					

^a NCHS public use data file. Rates are per 100,000 and are age-adjusted to the 2000 US Std Population (19 age groups - Census P25-1130).

^b Difference between state rate and total U.S. rate is statistically significant ($p < .0002$).

^c Absolute percent difference between state rate and total U.S. rate is 5% or more.

SE Standard error of the rate.

PD Percent difference between state rate and total U.S. rate.

Table II-15
ALL CANCER SITES (Invasive)

AVERAGE ANNUAL AGE-ADJUSTED CANCER DEATH^a RATES BY STATE, ALL RACES, 2000-2004

Females

State	Rate	SE	Rank	PD	State	Rate	SE	Rank	PD
TOTAL U.S.	162.2	0.14							
High Five States									
Kentucky	182.1 ^b	1.24	(01)	12.3 ^c					
District of Columbia	181.9 ^b	3.33	(02)	12.1 ^c					
West Virginia	181.2 ^b	1.73	(03)	11.7 ^c					
Louisiana	179.5 ^b	1.21	(04)	10.7 ^c					
Nevada	176.2 ^b	1.85	(05)	8.6 ^c					
Low Five States									
Colorado	146.6 ^b	1.19	(47)	-9.6 ^c					
Arizona	145.9 ^b	0.99	(48)	-10.0 ^c					
New Mexico	140.8 ^b	1.69	(49)	-13.2 ^c					
Utah	120.8 ^b	1.63	(50)	-25.5 ^c					
Hawaii	120.6 ^b	1.82	(51)	-25.6 ^c					
Alabama	164.8	1.11	(26)	1.6	Montana	161.7	2.44	(30)	-0.3
Alaska	161.8	4.25	(29)	-0.2	Nebraska	153.8 ^b	1.74	(41)	-5.2 ^c
Arizona	145.9 ^b	0.99	(48)	-10.0 ^c	Nevada	176.2 ^b	1.85	(05)	8.6 ^c
Arkansas	167.9 ^b	1.43	(19)	3.5	New Hampshire	165.9	2.16	(23)	2.3
California	152.4 ^b	0.42	(44)	-6.0 ^c	New Jersey	171.9 ^b	0.81	(11)	6.0 ^c
Colorado	146.6 ^b	1.19	(47)	-9.6 ^c	New Mexico	140.8 ^b	1.69	(49)	-13.2 ^c
Connecticut	159.0	1.21	(33)	-2.0	New York	159.0 ^b	0.53	(34)	-2.0
Delaware	172.2 ^b	2.70	(09)	6.2 ^c	North Carolina	162.0	0.83	(28)	-0.1
District of Columbia	181.9 ^b	3.33	(02)	12.1 ^c	North Dakota	146.9 ^b	2.73	(46)	-9.4 ^c
Florida	152.8 ^b	0.52	(43)	-5.8 ^c	Ohio	173.2 ^b	0.71	(08)	6.8 ^c
Georgia	163.0	0.90	(27)	0.5	Oklahoma	166.8 ^b	1.28	(21)	2.8
Hawaii	120.6 ^b	1.82	(51)	-25.6 ^c	Oregon	169.2 ^b	1.30	(17)	4.3
Idaho	149.0 ^b	2.09	(45)	-8.1 ^c	Pennsylvania	169.2 ^b	0.64	(16)	4.3
Illinois	170.1 ^b	0.70	(13)	4.9	Rhode Island	167.6	2.23	(20)	3.3
Indiana	173.8 ^b	1.00	(07)	7.2 ^c	South Carolina	161.5	1.18	(31)	-0.4
Iowa	156.9 ^b	1.30	(38)	-3.3	South Dakota	153.0 ^b	2.58	(42)	-5.7 ^c
Kansas	157.9	1.42	(36)	-2.7	Tennessee	172.0 ^b	1.01	(10)	6.0 ^c
Kentucky	182.1 ^b	1.24	(01)	12.3 ^c	Texas	156.6 ^b	0.56	(39)	-3.5
Louisiana	179.5 ^b	1.21	(04)	10.7 ^c	Utah	120.8 ^b	1.63	(50)	-25.5 ^c
Maine	175.6 ^b	2.04	(06)	8.3 ^c	Vermont	160.1	2.96	(32)	-1.3
Maryland	170.0 ^b	1.07	(14)	4.8	Virginia	165.5 ^b	0.92	(24)	2.0
Massachusetts	169.5 ^b	0.93	(15)	4.5	Washington	165.1	1.02	(25)	1.8
Michigan	166.3 ^b	0.77	(22)	2.5	West Virginia	181.2 ^b	1.73	(03)	11.7 ^c
Minnesota	156.1 ^b	1.07	(40)	-3.8	Wisconsin	157.5 ^b	1.00	(37)	-2.9
Mississippi	168.3 ^b	1.45	(18)	3.8	Wyoming	159.0	3.45	(35)	-2.0
Missouri	170.2 ^b	1.00	(12)	4.9					

^a NCHS public use data file. Rates are per 100,000 and are age-adjusted to the 2000 US Std Population (19 age groups - Census P25-1130).

^b Difference between state rate and total U.S. rate is statistically significant ($p < .0002$).

^c Absolute percent difference between state rate and total U.S. rate is 5% or more.

SE Standard error of the rate.

PD Percent difference between state rate and total U.S. rate.

Table II-16
ALL CANCER SITES (Invasive)

Estimated United States Cancer Prevalence Counts^a on January 1, 2004
By Race/Ethnicity, Sex and Years Since Diagnosis

Years Since Diagnosis	0 to <5	5 to <10	10 to <15	15 to <20	20 to <25	0 to <14 ^e	0 to <29 ^e	>=29 ^g	Complete ^h
<u>Race/Sex</u>									
All Races ^b	4,000,969	2,575,551	1,684,932	967,733	576,385	8,006,111	10,133,875	628,339	10,762,214
Males	2,045,700	1,263,135	783,314	350,307	188,472	3,991,427	4,719,465	128,964	4,848,429
Females	1,955,269	1,312,416	901,618	617,426	387,913	4,014,684	5,414,410	499,375	5,913,785
White ^b	3,470,077	2,268,586	1,516,326	880,613	527,020	7,022,890	8,963,343	556,535	9,519,878
Males	1,763,511	1,103,097	705,971	320,832	174,241	3,480,290	4,149,428	119,653	4,269,081
Females	1,706,566	1,165,489	810,355	559,781	352,779	3,542,600	4,813,915	436,882	5,250,797
Black ^b	369,267	212,712	116,988	58,155	33,350	683,128	808,407	34,714	843,121
Males	201,699	116,049	55,791	19,784	9,246	367,667	406,546	3,856	410,402
Females	167,568	96,663	61,197	38,371	24,104	315,461	401,861	30,858	432,719
Asian/Pacific Islander ^c	94,884	52,855	+	+	+	173,402	+	+	+
Males	41,766	21,367	+	+	+	72,822	+	+	+
Females	53,118	31,488	+	+	+	100,580	+	+	+
Hispanic ^d	209,405	119,228	+	+	+	391,682	+	+	+
Males	101,410	55,591	+	+	+	183,756	+	+	+
Females	107,995	63,637	+	+	+	207,926	+	+	+

Estimated prevalence percent^a on January 1, 2004, of the SEER 11 population diagnosed in the previous 10 years
By Age at Prevalence, Race/Ethnicity and Sex

Age at Prevalence	Age Specific (Crude)										Age-Adjusted ^f
	All Ages	0-9	10-19	20-29	30-39	40-49	50-59	60-69	70-79	80+	All Ages
<u>Race/Sex</u>											
All Races ^c	2.0010%	0.0753%	0.1068%	0.2153%	0.5353%	1.2656%	3.0498%	6.7185%	10.6190%	9.8820%	2.1180%
Males	2.0133%	0.0786%	0.1146%	0.1977%	0.4107%	0.8480%	2.5748%	7.7294%	14.6025%	14.1535%	2.4355%
Females	1.9890%	0.0719%	0.0985%	0.2338%	0.6640%	1.6800%	3.5000%	5.8134%	7.6124%	7.5419%	1.9274%
White ^c	2.1765%	0.0809%	0.1167%	0.2401%	0.5853%	1.3279%	3.1515%	7.0255%	11.0647%	10.0733%	2.2067%
Males	2.1593%	0.0845%	0.1254%	0.2202%	0.4568%	0.8954%	2.6178%	7.9086%	14.8755%	14.1521%	2.4884%
Females	2.1935%	0.0772%	0.1076%	0.2617%	0.7236%	1.7711%	3.6727%	6.2142%	8.1276%	7.8683%	2.0450%
Black ^c	1.4862%	0.0519%	0.0703%	0.1327%	0.3877%	1.0599%	3.1068%	7.1388%	10.6235%	8.6047%	2.0451%
Males	1.7028%	0.0498%	0.0736%	0.1132%	0.2737%	0.7699%	3.3913%	10.1198%	17.3533%	14.1910%	2.8194%
Females	1.2902%	0.0541%	0.0669%	0.1508%	0.4882%	1.3139%	2.8712%	4.8051%	6.2123%	5.9111%	1.5508%
Asian/Pacific Islander ^c	1.2855%	0.0600%	0.0833%	0.1311%	0.3360%	0.9499%	2.1151%	3.9201%	6.7560%	7.4756%	1.4050%
Males	1.1713%	0.0670%	0.0914%	0.1202%	0.2086%	0.4836%	1.3102%	3.9184%	9.2258%	10.8071%	1.4858%
Females	1.3923%	0.0527%	0.0748%	0.1419%	0.4568%	1.3730%	2.8196%	3.9214%	4.9839%	5.2597%	1.3862%
Hispanic ^d	0.8010%	0.0694%	0.0963%	0.1459%	0.3653%	0.8955%	2.0241%	4.4695%	7.5576%	7.0980%	1.4796%
Males	0.7304%	0.0717%	0.1015%	0.1340%	0.2682%	0.4921%	1.5016%	5.1135%	11.0515%	10.7381%	1.7246%
Females	0.8756%	0.0670%	0.0908%	0.1603%	0.4771%	1.3147%	2.5110%	3.9338%	5.0612%	5.0177%	1.3566%

^a US 2004 cancer prevalence counts are based on 2004 cancer prevalence proportions from the SEER registries and 1/1/2004 US population estimates based on the average of 2003 and 2004 population estimates from the US Bureau of the Census. Prevalence was calculated using the First Malignant Primary Only for a person.

^{b c d} Statistics based on (b) SEER 9 Areas (c) SEER 11 Areas and Rural Georgia (d) NHIA for Hispanic for SEER 11 Areas and Rural Georgia.

^e Maximum limited-duration prevalence: 29 years for 1975-2004 SEER 9 data; 14 years for 1990-2004 SEER 11 data (used to calculate prevalence for Hispanics and Asian Pacific Islanders).

^f Percentages are age-adjusted to the 2000 US Standard Population (19 age groups - Census P25-1130) by 5-year age groups.

^{g h} (g) Cases diagnosed more than 29 years ago were estimated using the completeness index method (Capocaccia et. al. 1997, Merrill et. al. 2000). (h) Complete prevalence is obtained by summing 0 to <29 and >=29.

- Statistic not shown. Statistic based on fewer than 5 cases estimated alive in SEER for the time interval.

+ Not available.

SEER Incidence, Delay Adjusted Incidence and US Death Rates^a All Cancer Sites, by Race and Sex

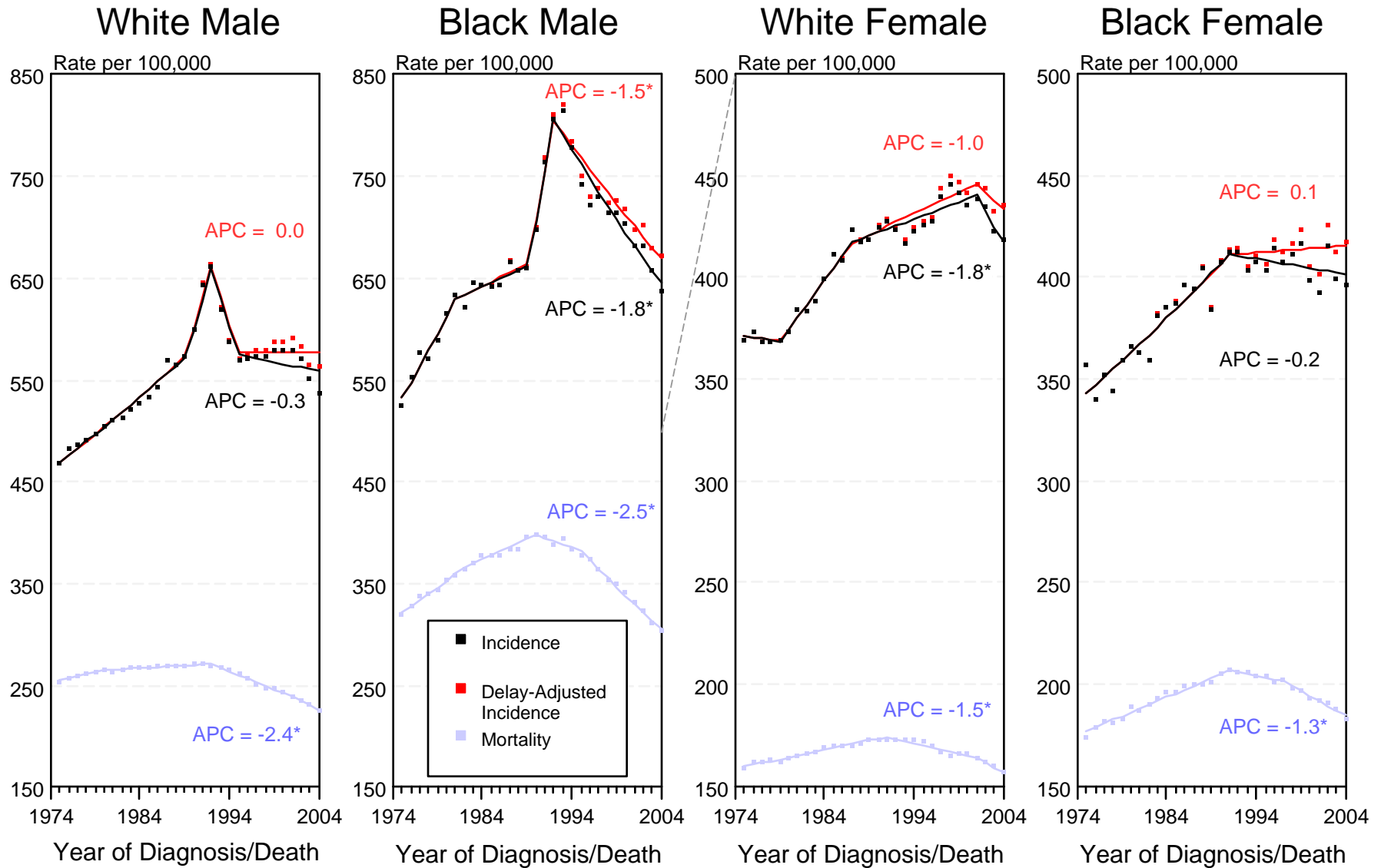


Figure II-1

^a Source: SEER 9 areas and NCHS public use data file for the total US. Rates are age-adjusted to the 2000 US Std Population (19 age groups - Census P25-1103). Regression lines and APCs are calculated using the Joinpoint Regression Program Version 3.0, April 2005, National Cancer Institute.

The APC is the Annual Percent Change for the regression line segments. The APC shown on the graph is for the most recent trend.

* The APC is significantly different from zero ($p < 0.05$).

SEER Incidence, Delay Adjusted Incidence and US Death Rates^a All Cancer Sites, Under 65 Years of Age, by Race and Sex

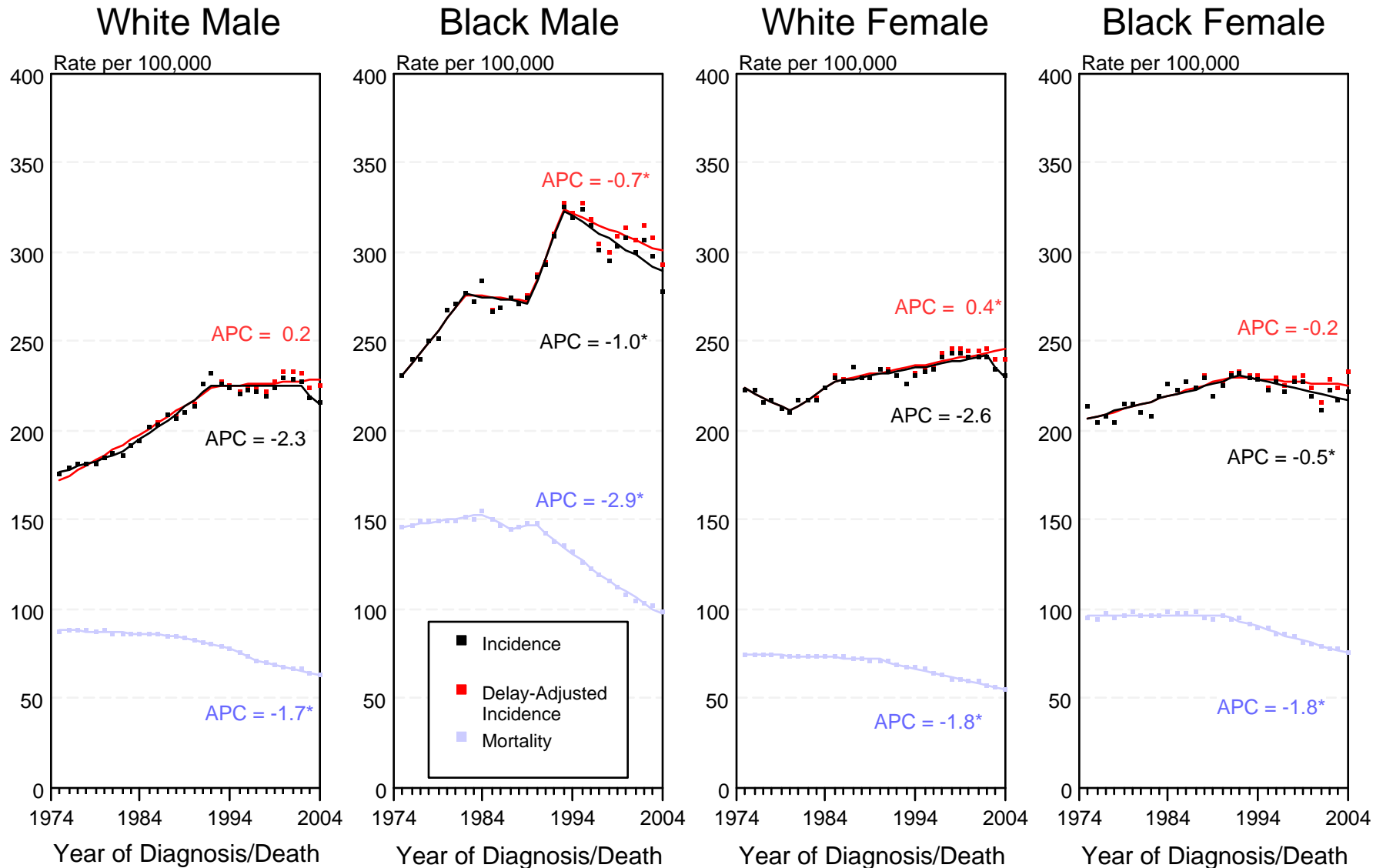


Figure II-2

^a Source: SEER 9 areas and NCHS public use data file for the total US. Rates are age-adjusted to the 2000 US Std Population (19 age groups - Census P25-1103). Regression lines and APCs are calculated using the Joinpoint Regression Program Version 3.0, April 2005, National Cancer Institute.

The APC is the Annual Percent Change for the regression line segments. The APC shown on the graph is for the most recent trend.

* The APC is significantly different from zero ($p < 0.05$).

SEER Incidence, Delay Adjusted Incidence and US Death Rates^a All Cancer Sites, Ages 65 and Over, by Race and Sex

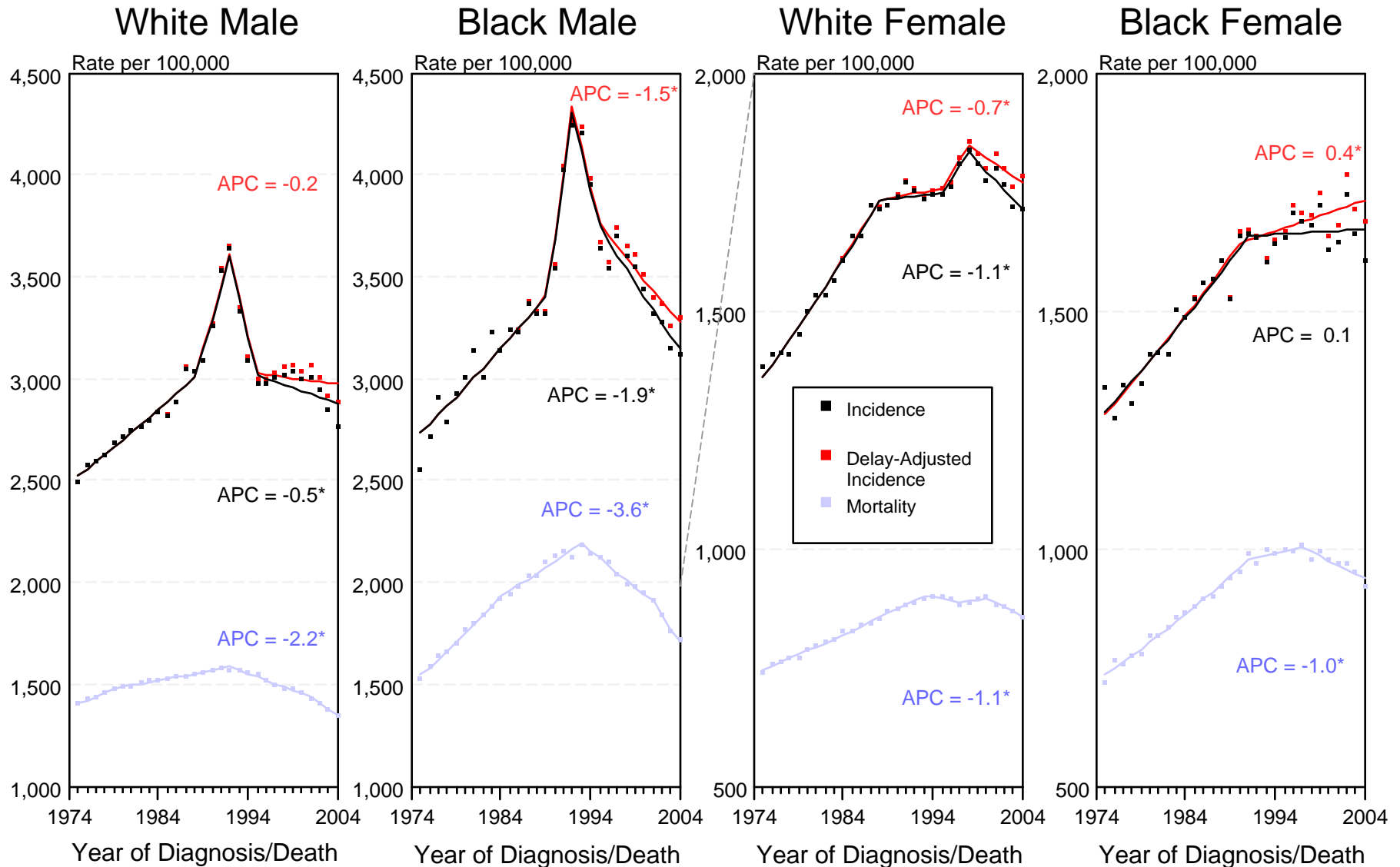


Figure II-3

^a Source: SEER 9 areas and NCHS public use data file for the total US. Rates are age-adjusted to the 2000 US Std Population (19 age groups - Census P25-1103). Regression lines and APCs are calculated using the Joinpoint Regression Program Version 3.0, April 2005, National Cancer Institute.

The APC is the Annual Percent Change for the regression line segments. The APC shown on the graph is for the most recent trend.

* The APC is significantly different from zero ($p < 0.05$).

SEER Incidence and US Death Rates^a All Cancer Sites, Both Sexes

Joinpoint Analyses for Whites and Blacks from 1975-2004

and for Asian/Pacific Islanders, American Indians/Alaska Natives and Hispanics from 1992-2004

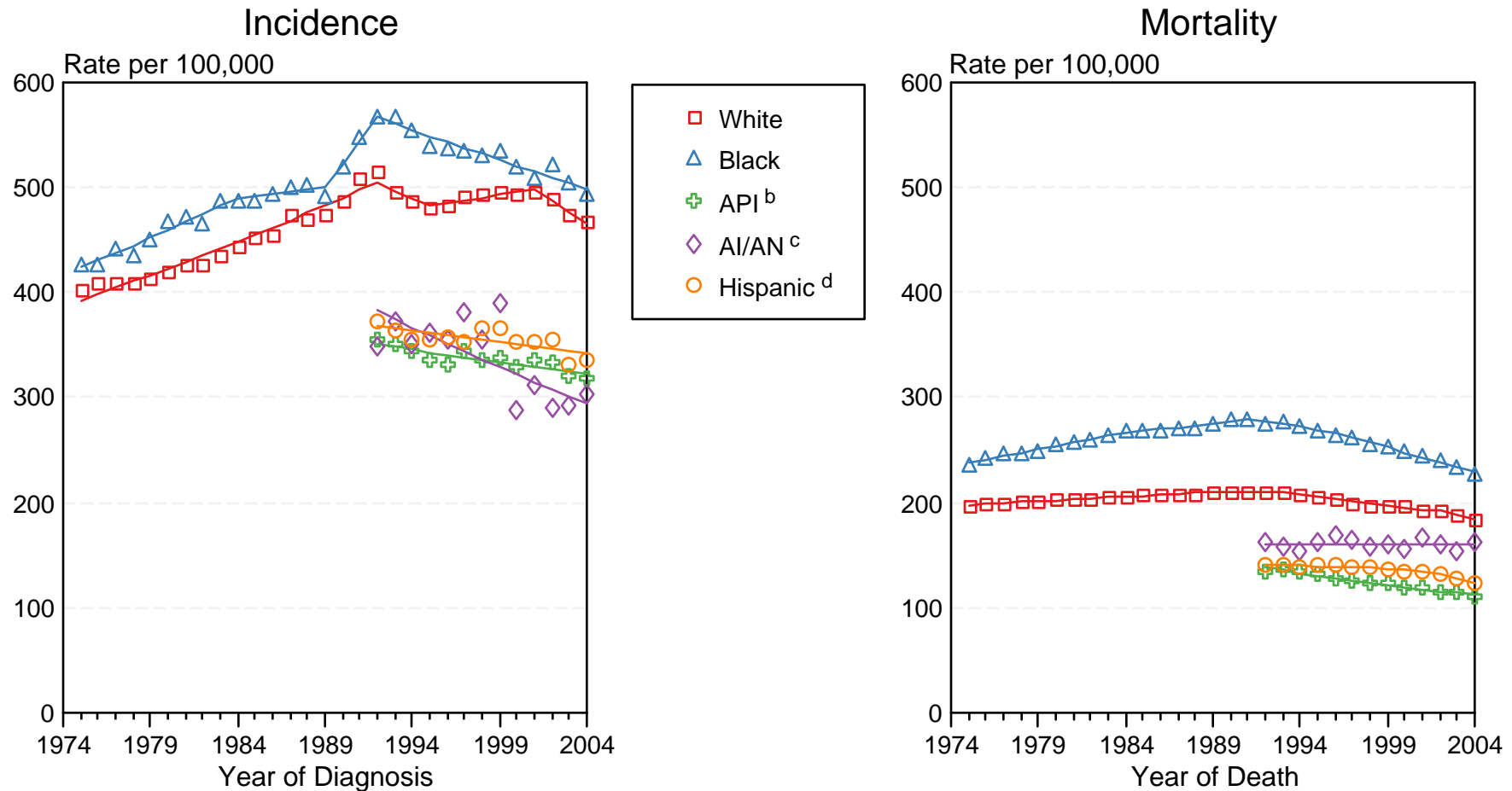


Figure 11-4

Source: Incidence data for whites and blacks are from the SEER 9 areas (San Francisco, Connecticut, Detroit, Hawaii, Iowa, New Mexico, Seattle, Utah, Atlanta). Incidence data for Asian/Pacific Islanders, American Indians/Alaska Natives and Hispanics are from the SEER 13 Areas (SEER 9 Areas, San Jose-Monterey, Los Angeles, Alaska Native Registry and Rural Georgia). Mortality data are from NCHS public use data file for the total US.

^a Rates are age-adjusted to the 2000 US Std Population (19 age groups - Census P25-1103).

Regression lines are calculated using the Joinpoint Regression Program Version 3.0, April 2005, National Cancer Institute.

^b API = Asian/Pacific Islander.

^c AI/AN = American Indian/Alaska Native. Rates for American Indian/Alaska Native are based on the CHSDA(Contract Health Service Delivery Area) counties.

^d Hispanic is not mutually exclusive from whites, blacks, Asian/Pacific Islanders, and American Indians/Alaska Natives. Incidence data for Hispanics are based on NHIA and exclude cases from the Alaska Native Registry. Mortality data for Hispanics exclude cases from Connecticut, Maine, Maryland, Minnesota, New Hampshire, New York, North Dakota, Oklahoma, and Vermont.