

Table VI-1  
COLON AND RECTUM CANCER (Invasive)

TRENDS IN SEER INCIDENCE<sup>a</sup> AND U.S. MORTALITY<sup>b</sup> USING THE JOINPOINT REGRESSION PROGRAM, 1975-2004  
WITH UP TO THREE JOINPOINTS BY RACE AND SEX

		Joinpoint Segment 1		Joinpoint Segment 2		Joinpoint Segment 3		Joinpoint Segment 4	
		Year	APC	Year	APC	Year	APC	Year	APC
<u>SEER Cancer Incidence<sup>a</sup></u>									
All Races	Male and Female	1975-1985	0.8*	1985-1995	-1.8*	1995-1998	1.4	1998-2004	-2.5*
All Races	Male	1975-1986	1.1*	1986-1995	-2.1*	1995-1998	1.1	1998-2004	-2.8*
All Races	Female	1975-1985	0.3	1985-1995	-1.9*	1995-1998	1.9	1998-2004	-2.4*
White	Male and Female	1975-1985	0.8*	1985-1995	-2.0*	1995-1998	1.6	1998-2004	-2.8*
White	Male	1975-1986	1.1*	1986-1995	-2.3*	1995-1998	1.3	1998-2004	-3.1*
White	Female	1975-1985	0.3	1985-1995	-2.1*	1995-1998	2.2	1998-2004	-2.7*
Black	Male and Female	1975-1980	3.5*	1980-2004	-0.3*				
Black	Male	1975-1980	4.7*	1980-2004	-0.1				
Black	Female	1975-1980	2.7	1980-2004	-0.4*				
<u>SEER Delay-Adjusted Incidence<sup>a</sup></u>									
All Races	Male and Female	1975-1985	0.8*	1985-1995	-1.8*	1995-1998	1.3	1998-2004	-2.3*
All Races	Male	1975-1986	1.1*	1986-1995	-2.1*	1995-1998	1.1	1998-2004	-2.6*
All Races	Female	1975-1985	0.3	1985-1995	-1.8*	1995-1998	1.8	1998-2004	-2.2*
White	Male and Female	1975-1985	0.8*	1985-1995	-2.0*	1995-1998	1.6	1998-2004	-2.5*
White	Male	1975-1986	1.1*	1986-1995	-2.3*	1995-1998	1.2	1998-2004	-2.8*
White	Female	1975-1985	0.3	1985-1995	-2.0*	1995-1998	2.1	1998-2004	-2.4*
Black	Male and Female	1975-1980	3.4*	1980-2004	-0.2*				
Black	Male	1975-1980	4.6*	1980-2004	0.0				
Black	Female	1975-2004	-0.1						
<u>U.S. Cancer Mortality<sup>b</sup></u>									
All Races	Male and Female	1975-1978	0.2	1978-1985	-0.8*	1985-2002	-1.8*	2002-2004	-4.7*
All Races	Male	1975-1979	0.6	1979-1987	-0.6*	1987-2002	-1.9*	2002-2004	-4.9*
All Races	Female	1975-1984	-1.0*	1984-2002	-1.8*	2002-2004	-4.5*		
White	Male and Female	1975-1978	0.1	1978-1985	-1.0*	1985-2002	-1.9*	2002-2004	-4.5*
White	Male	1975-1979	0.5	1979-1987	-0.8*	1987-2002	-2.1*	2002-2004	-4.7*
White	Female	1975-1984	-1.2*	1984-2002	-2.0*	2002-2004	-4.3*		
Black	Male and Female	1975-1990	0.6*	1990-2001	-0.8*	2001-2004	-3.4*		
Black	Male	1975-1990	1.2*	1990-2002	-0.7*	2002-2004	-4.9*		
Black	Female	1975-1985	0.7*	1985-2001	-0.7*	2001-2004	-4.0*		

Joinpoint Regression Program Version 3.0, April 2005, National Cancer Institute. (<http://srab.cancer.gov/joinpoint/>).

The APC is the Annual Percent Change based on rates age-adjusted to the 2000 US Std Population (19 age groups - Census P25-1130).

<sup>a</sup> Trends are from the SEER 9 areas (San Francisco, Connecticut, Detroit, Hawaii, Iowa, New Mexico, Seattle, Utah, and Atlanta).

<sup>b</sup> Trends are from the NCHS public use data file for the total US.

\* The APC is significantly different from zero (p<.05).

Table VI-2  
COLON CANCER (Invasive) AND RECTUM CANCER (Invasive)

TRENDS IN SEER INCIDENCE<sup>a</sup> USING THE JOINPOINT REGRESSION PROGRAM, 1975-2004  
WITH UP TO THREE JOINPOINTS BY RACE AND SEX

		<u>Joinpoint Segment 1</u>		<u>Joinpoint Segment 2</u>		<u>Joinpoint Segment 3</u>		<u>Joinpoint Segment 4</u>	
		<u>Year</u>	<u>APC</u>	<u>Year</u>	<u>APC</u>	<u>Year</u>	<u>APC</u>	<u>Year</u>	<u>APC</u>
<u>SEER Cancer Incidence for Colon<sup>a</sup></u>									
All Races	Male and Female	1975-1985	1.2*	1985-1995	-1.7*	1995-1998	0.9	1998-2004	-2.3*
All Races	Male	1975-1986	1.6*	1986-1995	-2.1*	1995-1998	0.6	1998-2004	-2.7*
All Races	Female	1975-1985	0.6*	1985-1993	-1.8*	1993-2001	-0.2	2001-2004	-3.9*
White	Male and Female	1975-1985	1.1*	1985-1995	-1.9*	1995-1998	1.2	1998-2004	-2.6*
White	Male	1975-1986	1.6*	1986-1995	-2.2*	1995-1998	0.8	1998-2004	-3.0*
White	Female	1975-1985	0.6*	1985-1993	-2.1*	1993-2001	-0.2	2001-2004	-4.1*
Black	Male and Female	1975-1980	3.9*	1980-2004	-0.3*				
Black	Male	1975-1987	1.9*	1987-2004	-0.5				
Black	Female	1975-2004	-0.2						
<u>SEER Cancer Incidence for Rectum<sup>a</sup></u>									
All Races	Male and Female	1975-1987	-0.3	1987-1995	-2.4*	1995-1998	2.9	1998-2004	-3.0*
All Races	Male	1975-1989	-0.3	1989-1994	-3.5*	1994-1999	1.2	1999-2004	-3.6*
All Races	Female	1975-1984	-0.2	1984-1995	-2.2*	1995-1998	2.8	1998-2004	-3.0*
White	Male and Female	1975-1985	-0.1	1985-1995	-2.3*	1995-1998	2.8	1998-2004	-3.3*
White	Male	1975-1989	-0.3	1989-1994	-4.0*	1994-1999	1.2	1999-2004	-3.9*
White	Female	1975-1984	-0.2	1984-1995	-2.4*	1995-1998	3.2	1998-2004	-3.6*
Black	Male and Female	1975-2004	-0.1						
Black	Male	1975-2004	0.1						
Black	Female	1975-2004	-0.3						

Joinpoint Regression Program Version 3.0, April 2005, National Cancer Institute. (<http://srab.cancer.gov/joinpoint/>).

The APC is the Annual Percent Change based on rates age-adjusted to the 2000 US Std Population (19 age groups - Census P25-1130).

<sup>a</sup> Trends are from the SEER 9 areas (San Francisco, Connecticut, Detroit, Hawaii, Iowa, New Mexico, Seattle, Utah, and Atlanta).

\* The APC is significantly different from zero (p<.05).

Table VI-3  
COLON AND RECTUM CANCER (Invasive)

AGE ADJUSTED SEER INCIDENCE<sup>a</sup> RATES BY YEAR, RACE AND SEX

	All Races			Whites			Blacks		
	Total	Males	Females	Total	Males	Females	Total	Males	Females
<u>AGE-ADJUSTED RATES</u>									
YEAR OF DIAGNOSIS:									
1975	59.5	68.4	53.6	60.2	69.8	54.0	56.8	59.2	54.7
1976	61.4	71.7	54.1	62.1	72.7	55.0	55.1	58.5	51.3
1977	62.4	73.5	55.0	63.2	74.3	55.8	60.6	75.8	51.3
1978	62.0	72.4	55.2	62.8	73.9	55.6	62.2	65.7	60.6
1979	62.4	74.1	54.5	62.9	75.2	54.9	58.6	61.6	56.3
1980	63.7	74.5	56.5	64.0	74.9	56.8	70.6	79.4	64.0
1981	64.2	75.8	56.5	64.9	76.7	57.1	62.8	72.8	55.9
1982	62.8	75.2	54.5	63.5	76.3	55.1	61.3	69.0	55.9
1983	63.7	75.6	55.6	64.3	76.6	56.1	66.7	75.5	61.1
1984	64.8	77.7	56.1	65.8	79.3	56.7	62.2	70.1	58.0
1985	66.3	79.1	57.4	67.2	80.1	58.4	63.8	74.0	56.3
1986	64.2	77.8	54.7	64.6	78.9	54.7	64.4	72.7	58.6
1987	62.7	77.5	52.7	62.9	78.2	52.6	66.2	77.4	59.0
1988	61.4	75.2	51.8	61.5	75.7	51.7	63.1	72.4	56.9
1989	61.7	74.9	52.4	62.0	75.4	52.7	64.2	79.0	54.5
1990	60.7	74.3	51.3	60.6	74.7	51.0	66.6	74.7	61.5
1991	59.5	72.9	50.0	59.3	73.1	49.7	65.6	76.3	58.2
1992	58.0	70.4	49.2	57.8	70.7	48.7	65.4	78.2	57.3
1993	56.8	68.4	48.3	56.3	68.1	47.8	64.3	77.9	55.1
1994	55.6	66.3	47.7	55.4	66.4	47.1	64.2	74.9	57.9
1995	54.0	63.7	46.9	53.6	63.3	46.6	62.0	71.2	56.1
1996	54.7	65.4	46.7	54.7	65.8	46.4	58.3	66.5	52.6
1997	56.3	68.0	47.9	56.3	67.9	48.0	64.0	76.7	55.7
1998	56.6	66.9	49.2	56.6	67.1	48.9	62.6	73.5	55.9
1999	55.4	65.6	47.8	55.2	65.6	47.1	63.0	71.9	57.8
2000	53.9	63.5	46.5	53.7	63.0	46.3	63.8	73.5	57.4
2001	53.2	62.5	45.9	52.6	62.0	45.1	63.5	74.0	56.7
2002	52.5	60.6	46.1	51.7	59.4	45.5	61.6	72.4	54.8
2003	49.9	58.5	43.0	49.4	57.6	42.7	60.4	72.9	52.5
2004	48.2	56.7	41.7	47.5	56.2	40.7	59.0	70.0	51.7
1975-2004	58.3	69.3	50.4	58.5	69.7	50.5	62.7	72.6	56.3

<sup>a</sup> SEER 9 areas (San Francisco, Connecticut, Detroit, Hawaii, Iowa, New Mexico, Seattle, Utah, and Atlanta). Rates are per 100,000 and are age-adjusted to the 2000 US Std Population (19 age groups - Census P25-1130).  
- Statistic not shown. Rate based on less than 16 cases for the time interval.

Table VI-4  
COLON CANCER (Invasive)

AGE ADJUSTED SEER INCIDENCE<sup>a</sup> RATES BY YEAR, RACE AND SEX

	All Races			Whites			Blacks		
	Total	Males	Females	Total	Males	Females	Total	Males	Females
<u>AGE-ADJUSTED RATES</u>									
YEAR OF DIAGNOSIS:									
1975	41.3	45.4	38.9	41.7	46.1	39.1	42.8	44.0	41.6
1976	43.1	47.8	39.9	43.4	48.2	40.4	43.1	43.6	42.0
1977	44.0	49.6	40.4	44.7	50.1	41.2	45.4	58.4	37.6
1978	43.8	49.1	40.6	44.1	49.9	40.6	47.8	48.8	47.9
1979	43.8	50.2	39.6	44.1	51.0	39.7	44.7	45.6	44.0
1980	45.6	50.7	42.3	45.6	50.9	42.3	55.0	58.0	52.7
1981	45.5	51.3	41.7	45.9	52.0	42.1	46.9	50.6	44.4
1982	45.8	53.5	40.7	46.1	54.1	40.9	48.3	52.5	45.2
1983	46.1	53.0	41.6	46.4	53.5	41.9	50.2	58.5	45.2
1984	46.5	54.6	41.3	47.0	55.6	41.6	48.6	54.0	45.8
1985	47.9	55.0	43.0	48.4	55.6	43.7	49.8	57.2	44.2
1986	46.8	54.4	41.6	47.1	55.2	41.5	49.2	55.0	45.5
1987	45.2	54.4	39.1	45.1	54.5	39.1	51.3	59.7	45.7
1988	44.3	52.6	38.7	44.3	52.8	38.4	48.9	54.0	45.6
1989	44.3	52.4	38.9	44.5	52.5	39.2	48.8	60.3	41.4
1990	44.2	51.9	38.9	44.0	51.9	38.8	51.9	57.7	48.5
1991	43.6	51.8	37.9	43.3	51.9	37.4	51.7	57.7	47.7
1992	42.3	49.7	37.2	42.1	49.8	36.7	50.7	60.1	45.2
1993	41.6	48.9	36.3	41.1	48.6	35.7	51.1	60.4	45.0
1994	40.8	46.9	36.3	40.6	47.1	35.8	49.8	56.6	46.2
1995	39.6	45.0	35.9	39.3	44.6	35.5	48.7	54.8	45.4
1996	39.3	45.3	34.9	39.3	45.7	34.4	44.4	48.3	41.9
1997	41.0	48.3	35.9	41.1	48.2	36.1	48.8	58.4	42.3
1998	41.0	46.7	37.0	40.8	47.0	36.5	47.4	54.1	43.9
1999	39.7	45.3	35.6	39.5	45.2	35.1	48.3	54.9	44.5
2000	39.2	44.3	35.3	38.9	43.9	35.0	50.6	56.9	46.6
2001	38.9	43.7	35.3	38.5	43.4	34.7	48.4	55.0	44.2
2002	38.2	42.7	34.7	37.5	41.6	34.2	48.3	55.8	43.5
2003	36.3	40.7	32.7	36.0	40.0	32.6	46.1	54.7	40.8
2004	35.1	40.0	31.5	34.6	39.7	30.7	44.9	51.6	40.5
1975-2004	42.1	48.2	37.7	42.1	48.4	37.7	48.4	54.8	44.3

<sup>a</sup> SEER 9 areas (San Francisco, Connecticut, Detroit, Hawaii, Iowa, New Mexico, Seattle, Utah, and Atlanta). Rates are per 100,000 and are age-adjusted to the 2000 US Std Population (19 age groups - Census P25-1130).  
- Statistic not shown. Rate based on less than 16 cases for the time interval.

Table VI-5  
RECTUM CANCER (Invasive)

AGE ADJUSTED SEER INCIDENCE<sup>a</sup> RATES BY YEAR, RACE AND SEX

	All Races			Whites			Blacks		
	Total	Males	Females	Total	Males	Females	Total	Males	Females
<u>AGE-ADJUSTED RATES</u>									
YEAR OF DIAGNOSIS:									
1975	18.2	23.0	14.8	18.5	23.6	14.9	14.0	15.2	13.0
1976	18.3	24.0	14.2	18.7	24.5	14.6	12.0	14.9	9.4
1977	18.4	23.9	14.6	18.5	24.3	14.6	15.3	17.3	13.8
1978	18.2	23.2	14.7	18.7	24.0	15.0	14.4	16.9	12.8
1979	18.6	23.9	15.0	18.8	24.2	15.2	13.9	16.1	12.3
1980	18.2	23.9	14.2	18.4	24.0	14.5	15.6	21.4	11.3
1981	18.8	24.5	14.8	19.0	24.8	15.0	15.9	22.2	11.6
1982	17.0	21.7	13.8	17.4	22.2	14.2	13.0	16.5	10.7
1983	17.6	22.6	14.0	17.9	23.1	14.2	16.5	17.0	15.9
1984	18.3	23.0	14.8	18.8	23.7	15.1	13.7	16.1	12.1
1985	18.4	24.1	14.4	18.8	24.6	14.7	14.0	16.8	12.1
1986	17.4	23.4	13.1	17.5	23.7	13.2	15.2	17.7	13.2
1987	17.5	23.0	13.5	17.7	23.7	13.5	14.9	17.6	13.3
1988	17.1	22.6	13.1	17.3	22.9	13.3	14.2	18.4	11.3
1989	17.3	22.5	13.5	17.5	22.9	13.5	15.4	18.8	13.1
1990	16.5	22.4	12.4	16.6	22.7	12.3	14.6	17.0	13.0
1991	15.9	21.0	12.1	16.0	21.2	12.3	13.9	18.5	10.5
1992	15.7	20.8	12.0	15.8	20.9	12.0	14.6	18.1	12.1
1993	15.2	19.5	12.0	15.3	19.4	12.1	13.2	17.5	10.1
1994	14.8	19.3	11.4	14.7	19.3	11.3	14.4	18.3	11.7
1995	14.4	18.7	11.1	14.4	18.7	11.1	13.2	16.3	10.7
1996	15.4	20.1	11.8	15.4	20.1	12.0	13.8	18.2	10.7
1997	15.3	19.6	12.0	15.3	19.6	11.9	15.2	18.3	13.4
1998	15.7	20.2	12.2	15.7	20.1	12.4	15.2	19.4	12.0
1999	15.6	20.3	12.1	15.7	20.4	12.0	14.7	17.0	13.2
2000	14.7	19.2	11.2	14.8	19.2	11.3	13.2	16.6	10.8
2001	14.2	18.8	10.6	14.1	18.6	10.4	15.0	19.0	12.4
2002	14.3	18.0	11.4	14.2	17.9	11.3	13.3	16.6	11.3
2003	13.6	17.7	10.3	13.4	17.5	10.1	14.3	18.2	11.7
2004	13.1	16.7	10.3	12.9	16.5	9.9	14.1	18.4	11.2
1975-2004	16.2	21.0	12.6	16.4	21.2	12.8	14.3	17.7	11.9

<sup>a</sup> SEER 9 areas (San Francisco, Connecticut, Detroit, Hawaii, Iowa, New Mexico, Seattle, Utah, and Atlanta). Rates are per 100,000 and are age-adjusted to the 2000 US Std Population (19 age groups - Census P25-1130).

- Statistic not shown. Rate based on less than 16 cases for the time interval.

Table VI-6  
COLON AND RECTUM CANCER (Invasive)

AGE-ADJUSTED U.S. DEATH<sup>a</sup> RATES BY YEAR, RACE AND SEX

	All Races			Whites			Blacks		
	Total	Males	Females	Total	Males	Females	Total	Males	Females
<u>AGE-ADJUSTED RATES</u>									
YEAR OF DEATH:									
1975	28.1	32.8	25.0	28.3	33.2	25.1	26.8	30.1	24.6
1976	28.6	33.3	25.4	28.7	33.8	25.5	28.2	31.2	26.3
1977	28.2	33.2	24.9	28.3	33.5	25.0	27.6	31.4	24.9
1978	28.5	33.7	25.1	28.7	34.1	25.2	27.9	31.2	25.7
1979	28.1	33.6	24.6	28.2	33.9	24.6	28.2	31.6	26.0
1980	28.1	33.7	24.4	28.1	34.0	24.3	28.8	33.2	25.9
1981	27.5	33.0	24.0	27.5	33.2	23.9	28.9	32.8	26.3
1982	27.2	33.0	23.6	27.2	33.1	23.4	29.1	33.7	26.1
1983	27.1	33.1	23.2	27.1	33.3	23.1	28.7	32.9	25.8
1984	27.3	33.0	23.6	27.3	33.1	23.5	29.6	34.6	26.2
1985	26.9	32.7	23.1	26.8	32.7	22.8	30.5	34.1	28.0
1986	26.2	32.1	22.3	26.0	32.0	22.1	29.8	35.4	26.3
1987	25.9	31.9	22.0	25.7	31.8	21.6	29.8	35.1	26.5
1988	25.3	31.1	21.5	25.1	31.0	21.2	29.2	34.3	25.9
1989	25.0	30.8	21.2	24.7	30.5	20.8	30.1	36.4	26.1
1990	24.6	30.8	20.6	24.3	30.4	20.2	30.8	37.6	26.6
1991	24.0	29.6	20.3	23.6	29.4	19.8	30.0	35.8	26.5
1992	23.6	29.3	19.9	23.2	29.0	19.4	29.5	36.2	25.4
1993	23.3	28.6	19.8	22.9	28.2	19.3	29.8	35.8	26.0
1994	22.9	28.3	19.3	22.5	27.9	18.8	29.0	35.7	24.9
1995	22.6	27.7	19.1	22.1	27.2	18.6	29.5	36.3	25.5
1996	21.9	26.7	18.5	21.4	26.3	18.0	28.6	34.5	24.9
1997	21.5	26.2	18.1	20.9	25.7	17.6	28.8	35.1	24.8
1998	21.2	25.6	18.0	20.7	25.1	17.5	28.3	33.9	24.8
1999	20.9	25.5	17.8	20.4	25.0	17.2	28.5	34.5	24.7
2000	20.7	25.0	17.5	20.1	24.4	17.0	28.1	34.9	23.9
2001	20.1	24.2	17.1	19.5	23.7	16.5	27.7	33.2	24.2
2002	19.6	23.8	16.5	19.1	23.2	16.0	26.9	33.4	22.8
2003	19.0	23.0	16.0	18.5	22.4	15.5	26.4	32.1	22.7
2004	17.9	21.6	15.2	17.4	21.1	14.7	24.8	30.2	21.2
1975-2004	23.9	28.9	20.5	23.7	28.7	20.2	28.6	34.0	25.2

<sup>a</sup> NCHS public use data file for the total US. Rates are per 100,000 and are age-adjusted to the 2000 US Std Population (19 age groups - Census P25-1130).

- Statistic not shown. Rate based on less than 16 cases for the time interval.

Table VI-7  
COLON AND RECTUM CANCER (Invasive)

SEER INCIDENCE<sup>a</sup> AND U.S. DEATH<sup>b</sup> RATES, AGE-ADJUSTED AND AGE-SPECIFIC RATES, BY RACE AND SEX

	All Races			Whites			Blacks		
	Total	Males	Females	Total	Males	Females	Total	Males	Females
<u>SEER INCIDENCE</u>									
<u>AGE AT DIAGNOSIS</u>									
AGE-ADJUSTED RATES, 2000-2004									
All ages	51.6	60.8	44.6	51.2	60.4	44.0	62.1	72.6	55.0
Under 65	18.4	21.2	15.8	17.8	20.6	15.1	24.8	27.9	22.2
65 and over	281.4	334.3	243.8	282.5	335.6	244.3	319.6	381.5	281.8
All ages(IARC world std) <sup>c</sup>	31.6	37.2	26.9	31.2	36.9	26.4	39.2	45.4	34.6
AGE-SPECIFIC RATES, 2000-2004									
<1	-	-	-	-	-	-	-	-	-
1-4	-	-	-	-	-	-	-	-	-
5-9	-	-	-	-	-	-	-	-	-
10-14	0.1	-	-	-	-	-	-	-	-
15-19	0.2	0.3	0.2	0.2	0.3	0.2	-	-	-
20-24	0.8	0.7	0.8	0.8	0.8	0.9	0.6	-	1.0
25-29	1.8	1.8	1.7	1.8	1.9	1.7	1.3	1.3	1.3
30-34	3.8	4.0	3.6	3.9	4.1	3.6	3.8	3.5	4.1
35-39	7.7	8.3	7.0	7.3	7.9	6.7	8.6	9.6	7.7
40-44	14.2	14.7	13.6	13.6	14.1	13.0	18.3	19.7	17.1
45-49	27.5	29.7	25.3	26.4	28.8	24.1	35.2	37.0	33.6
50-54	52.5	59.7	45.6	50.2	57.7	42.8	73.2	79.9	67.5
55-59	79.0	93.6	65.2	76.0	90.6	61.9	111.5	129.2	96.8
60-64	121.8	147.8	98.1	119.5	146.0	94.8	168.2	197.9	144.4
65-69	185.4	223.9	152.4	184.2	222.7	150.4	224.6	261.9	196.1
70-74	245.5	300.6	201.7	246.8	302.4	201.6	281.8	338.9	242.0
75-79	316.4	379.0	272.5	318.0	379.1	274.8	360.1	436.5	313.0
80-84	370.7	428.9	334.5	372.1	430.8	335.7	421.8	503.0	377.8
85+	403.3	460.5	377.4	407.8	467.3	381.3	419.1	497.0	388.0
<u>U.S. MORTALITY</u>									
<u>AGE AT DEATH</u>									
AGE-ADJUSTED RATES, 2000-2004									
All ages	19.4	23.5	16.4	18.9	22.9	15.9	26.7	32.7	22.9
Under 65	5.4	6.4	4.5	5.1	6.1	4.1	8.7	10.3	7.4
65 and over	116.3	141.5	99.1	114.6	139.5	97.3	151.3	187.4	130.1
All ages(IARC world std) <sup>c</sup>	10.9	13.2	9.0	10.5	12.8	8.7	15.7	19.1	13.3
AGE-SPECIFIC RATES, 2000-2004									
<1	-	-	-	-	-	-	-	-	-
1-4	-	-	-	-	-	-	-	-	-
5-9	-	-	-	-	-	-	-	-	-
10-14	-	-	-	-	-	-	-	-	-
15-19	0.1	0.1	0.0	0.1	0.1	0.0	-	-	-
20-24	0.2	0.2	0.1	0.2	0.2	0.1	0.2	0.4	-
25-29	0.4	0.5	0.4	0.4	0.5	0.4	0.5	0.5	0.5
30-34	0.9	1.0	0.9	0.9	1.0	0.8	1.3	1.4	1.1
35-39	2.0	2.2	1.9	1.9	2.1	1.7	3.1	3.2	3.0
40-44	3.9	4.3	3.5	3.6	3.9	3.2	6.4	7.3	5.7
45-49	7.9	8.9	6.9	7.2	8.2	6.2	13.7	15.2	12.5
50-54	14.3	16.6	12.0	13.3	15.6	11.0	23.7	27.6	20.4
55-59	23.9	29.0	19.1	22.5	27.5	17.7	39.5	47.4	33.1
60-64	39.0	48.1	30.8	37.4	46.2	29.3	59.7	73.9	48.6
65-69	59.6	75.0	46.3	57.9	73.0	44.5	84.9	106.8	68.7
70-74	85.8	107.0	68.8	83.8	105.0	66.6	119.6	150.2	99.1
75-79	118.8	147.7	98.3	116.7	145.3	96.3	159.9	202.9	134.2
80-84	162.9	198.3	141.5	160.9	195.8	139.6	208.9	265.4	179.8
85+	246.4	283.0	230.7	245.8	282.5	230.0	281.6	325.5	264.7

<sup>a</sup> SEER 17 areas. Rates are per 100,000 and are age-adjusted to the 2000 US Std Population (19 age groups - Census P25-1130), unless noted.

<sup>b</sup> NCHS public use data file for the total US. Rates are per 100,000 and are age-adjusted to the 2000 US Std Population (19 age groups - Census P25-1130), unless noted.

<sup>c</sup> Rates are per 100,000 and are age-adjusted to the IARC world standard population.

- Statistic not shown. Rate based on less than 16 cases for the time interval.

Table VI-8  
 COLON CANCER (Invasive) and RECTUM CANCER (Invasive)

SEER INCIDENCE<sup>a</sup> RATES, AGE-ADJUSTED AND AGE-SPECIFIC RATES, BY RACE AND SEX

	All Races			Whites			Blacks		
	Total	Males	Females	Total	Males	Females	Total	Males	Females
<u>COLON INCIDENCE</u>									
<u>AGE AT DIAGNOSIS</u>									
AGE-ADJUSTED RATES, 2000-2004									
All ages	37.4	42.5	33.5	37.0	42.2	33.0	47.8	54.9	43.1
Under 65	11.8	13.1	10.6	11.3	12.7	10.0	17.7	19.5	16.3
65 and over	213.9	245.7	191.4	214.4	246.0	191.9	255.6	300.2	228.7
All ages(IARC world std) <sup>b</sup>	22.2	25.2	19.7	21.8	24.9	19.2	29.6	33.6	26.7
AGE-SPECIFIC RATES, 2000-2004									
<1	-	-	-	-	-	-	-	-	-
1-4	-	-	-	-	-	-	-	-	-
5-9	-	-	-	-	-	-	-	-	-
10-14	-	-	-	-	-	-	-	-	-
15-19	0.2	0.2	0.2	0.2	0.2	0.2	-	-	-
20-24	0.5	0.5	0.5	0.5	0.6	0.5	0.5	-	-
25-29	1.1	1.2	1.1	1.2	1.2	1.2	0.7	-	-
30-34	2.5	2.6	2.3	2.5	2.6	2.3	2.8	2.7	2.8
35-39	4.6	4.8	4.3	4.4	4.6	4.1	5.5	5.8	5.2
40-44	8.7	8.8	8.7	8.3	8.5	8.2	12.2	12.5	11.9
45-49	16.7	17.3	16.1	15.9	16.7	15.0	24.1	23.8	24.4
50-54	32.9	35.8	30.1	30.9	34.2	27.8	52.2	54.6	50.2
55-59	51.0	58.1	44.3	48.7	55.9	41.8	80.3	92.0	70.5
60-64	82.5	96.0	70.2	80.5	94.3	67.6	124.8	145.0	108.6
65-69	131.6	153.1	113.2	129.8	151.0	111.2	173.0	197.2	154.6
70-74	181.9	215.4	155.2	182.5	216.3	155.1	221.1	258.9	194.8
75-79	240.5	278.3	214.0	241.6	277.7	216.2	288.3	345.4	253.2
80-84	292.2	326.9	270.6	293.3	328.2	271.6	342.6	404.2	309.2
85+	324.9	362.1	308.1	328.6	366.9	311.6	351.8	414.1	326.9
<u>RECTUM INCIDENCE</u>									
<u>AGE AT DIAGNOSIS</u>									
AGE-ADJUSTED RATES, 2000-2004									
All ages	14.3	18.3	11.1	14.2	18.3	11.0	14.3	17.6	11.9
Under 65	6.6	8.1	5.2	6.4	7.9	5.0	7.1	8.4	5.9
65 and over	67.5	88.6	52.3	68.0	89.6	52.4	64.0	81.2	53.1
All ages(IARC world std) <sup>b</sup>	9.4	12.0	7.2	9.4	12.0	7.1	9.6	11.8	8.0
AGE-SPECIFIC RATES, 2000-2004									
<1	-	-	-	-	-	-	-	-	-
1-4	-	-	-	-	-	-	-	-	-
5-9	-	-	-	-	-	-	-	-	-
10-14	-	-	-	-	-	-	-	-	-
15-19	0.1	-	-	-	-	-	-	-	-
20-24	0.3	0.2	0.3	0.3	0.3	0.3	-	-	-
25-29	0.6	0.7	0.6	0.7	0.7	0.6	0.6	-	-
30-34	1.4	1.4	1.3	1.4	1.4	1.3	1.0	-	1.2
35-39	3.1	3.5	2.6	3.0	3.3	2.6	3.1	3.8	2.5
40-44	5.5	6.0	4.9	5.2	5.7	4.8	6.1	7.2	5.2
45-49	10.8	12.3	9.2	10.6	12.0	9.1	11.1	13.2	9.2
50-54	19.6	23.9	15.4	19.3	23.6	15.0	21.0	25.4	17.3
55-59	28.0	35.5	20.9	27.2	34.7	20.1	31.2	37.2	26.3
60-64	39.3	51.8	27.9	39.0	51.7	27.2	43.4	52.9	35.7
65-69	53.8	70.9	39.2	54.3	71.7	39.1	51.5	64.7	41.5
70-74	63.6	85.2	46.4	64.3	86.1	46.5	60.7	80.1	47.2
75-79	75.9	100.6	58.5	76.3	101.4	58.6	71.7	91.1	59.8
80-84	78.5	102.0	63.8	78.8	102.6	64.1	79.2	98.8	68.6
85+	78.4	98.4	69.3	79.2	100.3	69.8	67.3	82.8	61.1

<sup>a</sup> SEER 17 areas. Rates are per 100,000 and are age-adjusted to the 2000 US Std Population (19 age groups - Census P25-1130), unless noted.

<sup>b</sup> Rates are per 100,000 and are age-adjusted to the IARC world standard population.

- Statistic not shown. Rate based on less than 16 cases for the time interval.



Table VI-9  
COLON AND RECTUM CANCER (Invasive)

## SURVIVAL RATES, BY RACE, SEX, DIAGNOSIS YEAR, STAGE AND AGE

	All Races			Whites			Blacks		
	Total	Males	Females	Total	Males	Females	Total	Males	Females
<u>5-YR RELATIVE SURVIVAL RATES</u>									
YEAR OF DIAGNOSIS:									
1960-1963 <sup>a</sup>	-	-	-	-	-	-	-	-	-
1970-1973 <sup>a</sup>	-	-	-	-	-	-	-	-	-
1975-1977 <sup>b</sup>	50.7	49.8	51.6	50.9	50.1	51.6	46.0	44.3	47.0
1978-1980 <sup>b</sup>	52.5	51.5	53.4	52.9	51.9	53.8	46.1	44.2	47.4
1981-1983 <sup>b</sup>	55.4	55.2	55.7	55.8	55.8	55.9	47.5	43.9	50.3
1984-1986 <sup>b</sup>	58.5	58.4	58.6	59.2	59.2	59.3	49.0	48.0	49.8
1987-1989 <sup>b</sup>	60.6	60.9	60.4	61.1	61.6	60.6	53.3	51.0	55.3
1990-1992 <sup>b</sup>	62.4	62.3	62.4	63.1	63.1	63.2	53.8	55.4	52.3
1993-1995 <sup>b</sup>	60.9	60.4	61.4	61.5	60.9	62.0	52.9	51.6	54.0
1996-2003 <sup>b</sup>	64.9 <sup>e</sup>	64.8 <sup>e</sup>	64.9 <sup>e</sup>	65.9 <sup>e</sup>	65.7 <sup>e</sup>	66.0 <sup>e</sup>	55.7 <sup>e</sup>	56.4 <sup>e</sup>	55.1 <sup>e</sup>
<u>5-YR PERIOD SURVIVAL RATES<sup>cd</sup></u>									
YEAR OF DIAGNOSIS:									
1996-2003	64.4	64.8	64.1	65.5	65.9	65.1	55.7	56.1	55.4
<u>STAGE DISTRIBUTION (%) 1996-2003<sup>c</sup></u>									
All Stages									
Number of cases	175,562	88,507	87,055	143,224	72,539	70,685	17,407	8,036	9,371
Percent	100%	100%	100%	100%	100%	100%	100%	100%	100%
Localized	39	40	39	40	41	39	35	36	35
Regional	36	36	37	37	36	37	35	34	35
Distant	19	19	19	19	19	18	24	25	23
Unstaged	5	4	5	5	4	5	6	6	6
<u>5-YR RELATIVE SURVIVAL RATES, 1996-2003<sup>c</sup></u>									
AGE AT DIAGNOSIS:									
<45	65.3	65.2	65.6	67.5	66.5	68.7	56.7	59.5	54.1
45-54	67.1	66.2	68.1	68.0	66.9	69.4	59.7	59.3	60.2
55-64	66.3	65.9	66.8	67.4	67.0	68.0	56.5	55.5	57.6
65-74	65.7	64.9	66.6	66.4	65.4	67.6	57.0	57.6	56.6
75+	59.3	59.7	59.0	60.5	61.2	60.0	45.7	43.8	46.8
Under 65	66.4	65.9	67.0	67.6	66.9	68.5	57.6	57.4	57.9
65 and over	62.5	62.7	62.4	63.4	63.6	63.3	52.0	52.3	51.9
STAGE:									
All Stages	64.0	64.0	64.0	64.9	64.9	64.9	54.9	55.2	54.7
Localized	89.8	89.7	89.9	90.4	90.3	90.5	84.3	84.5	84.2
Regional	67.7	67.6	67.8	68.5	68.4	68.6	60.6	61.6	59.7
Distant	10.3	9.9	10.7	10.5	10.0	11.1	8.1	8.5	7.8
Unstaged	35.8	39.5	32.5	35.2	39.6	31.2	33.8	33.1	34.1

<sup>a</sup> Rates are based on End Results data from a series of hospital registries and one population-based registry.

<sup>b</sup> Rates are from the SEER 9 areas (San Francisco, Connecticut, Detroit, Hawaii, Iowa, New Mexico, Seattle, Utah, Atlanta).

Rates are based on follow-up of patients into 2004.

<sup>c</sup> Rates are from the SEER 17 areas (San Francisco, Connecticut, Detroit, Hawaii, Iowa, New Mexico, Seattle, Utah, Atlanta, San Jose-Monterey, Los Angeles, Alaska Native Registry, Rural Georgia, California excluding SF/SJM/LA, Kentucky, Louisiana and New Jersey). California excluding SF/SJM/LA, Kentucky, Louisiana, and New Jersey contribute cases for diagnosis years 2000-2003. The remaining 13 SEER Areas contribute cases for the entire period 1996-2003. Rates are based on follow-up of patients into 2004.

<sup>d</sup> Period survival provides a more up-to-date estimate of survival by piecing together the most recent conditional survival estimates from several cohorts. It is computed here using three calendar year blocks (2001-2003: 0-1 year survival), (2000-2002: 1-2 year survival), (1999-2001: 2-3 year survival), (1998-2000: 3-4 year survival), (1997-1999: 4-5 years survival).

<sup>e</sup> The difference in rates between 1975-1977 and 1996-2003 is statistically significant ( $p < .05$ ).

<sup>f</sup> The standard error of the survival rate is between 5 and 10 percentage points.

<sup>g</sup> The standard error of the survival rate is greater than 10 percentage points.

- Statistic could not be calculated due to fewer than 16 cases during the time period.

Table VI-10  
COLON CANCER (Invasive)

SURVIVAL RATES, BY RACE, SEX, DIAGNOSIS YEAR, STAGE AND AGE

	All Races			Whites			Blacks		
	Total	Males	Females	Total	Males	Females	Total	Males	Females
<u>5-YR RELATIVE SURVIVAL RATES</u>									
YEAR OF DIAGNOSIS:									
1960-1963 <sup>a</sup>	-	-	-	43	42	44	34	32	35
1970-1973 <sup>a</sup>	-	-	-	49	47	50	37	36	38
1975-1977 <sup>b</sup>	51.4	50.8	52.0	51.6	51.1	52.1	46.3	45.3	46.7
1978-1980 <sup>b</sup>	53.5	52.5	54.3	53.6	52.6	54.5	49.5	47.8	50.6
1981-1983 <sup>b</sup>	56.5	57.0	56.0	56.7	57.5	56.1	49.7	45.9	52.4
1984-1986 <sup>b</sup>	59.1	59.5	58.7	59.8	60.2	59.4	49.9	49.6	50.1
1987-1989 <sup>b</sup>	61.3	61.9	60.7	61.7	62.5	61.0	53.2	51.6	54.5
1990-1992 <sup>b</sup>	63.1	63.6	62.7	63.9	64.4	63.5	54.2	55.8	53.0
1993-1995 <sup>b</sup>	60.8	60.6	60.9	61.4	61.2	61.6	52.3	51.2	53.0
1996-2003 <sup>b</sup>	64.5 <sup>e</sup>	64.7 <sup>e</sup>	64.3 <sup>e</sup>	65.6 <sup>e</sup>	65.8 <sup>e</sup>	65.5 <sup>e</sup>	54.7 <sup>e</sup>	56.1 <sup>e</sup>	53.7 <sup>e</sup>
<u>5-YR PERIOD SURVIVAL RATES<sup>cd</sup></u>									
YEAR OF DIAGNOSIS:									
1996-2003	64.0	64.7	63.4	65.2	65.8	64.7	55.6	56.6	54.8
<u>STAGE DISTRIBUTION (%) 1996-2003<sup>c</sup></u>									
All Stages									
Number of cases	124,575	59,772	64,803	101,634	49,027	52,607	13,155	5,847	7,308
Percent	100%	100%	100%	100%	100%	100%	100%	100%	100%
Localized	37	38	36	38	39	37	33	34	33
Regional	37	37	38	37	37	38	36	35	36
Distant	21	21	20	20	21	20	26	26	25
Unstaged	4	4	5	4	4	5	5	5	6
<u>5-YR RELATIVE SURVIVAL RATES, 1996-2003<sup>c</sup></u>									
AGE AT DIAGNOSIS:									
<45	64.2	66.0	62.1	66.5	66.3	66.6	55.3	63.3	48.7
45-54	64.8	64.8	64.8	65.7	65.6	65.8	57.6	56.5	58.6
55-64	65.4	65.2	65.6	66.7	66.5	66.9	55.3	55.5	55.2
65-74	65.5	64.9	66.0	66.3	65.4	67.3	57.8	59.4	56.6
75+	60.4	61.3	59.8	61.7	62.8	61.0	46.6	45.5	47.2
Under 65	65.0	65.1	64.8	66.3	66.2	66.5	56.1	56.9	55.3
65 and over	62.9	63.3	62.5	63.9	64.2	63.6	52.8	53.9	52.1
STAGE:									
All Stages	63.5	64.0	63.1	64.6	64.9	64.4	54.3	55.4	53.4
Localized	90.8	91.2	90.5	91.6	91.8	91.3	84.8	85.7	84.0
Regional	69.4	69.7	69.1	70.2	70.6	69.8	62.8	64.6	61.5
Distant	10.8	10.6	11.1	11.1	10.6	11.6	8.4	8.7	8.1
Unstaged	30.0	33.9	26.9	29.9	33.8	26.8	26.2	28.7	24.1

<sup>a</sup> Rates are based on End Results data from a series of hospital registries and one population-based registry.  
<sup>b</sup> Rates are from the SEER 9 areas (San Francisco, Connecticut, Detroit, Hawaii, Iowa, New Mexico, Seattle, Utah, Atlanta).  
Rates are based on follow-up of patients into 2004.  
<sup>c</sup> Rates are from the SEER 17 areas (San Francisco, Connecticut, Detroit, Hawaii, Iowa, New Mexico, Seattle, Utah, Atlanta, San Jose-Monterey, Los Angeles, Alaska Native Registry, Rural Georgia, California excluding SF/SJM/LA, Kentucky, Louisiana and New Jersey). California excluding SF/SJM/LA, Kentucky, Louisiana, and New Jersey contribute cases for diagnosis years 2000-2003. The remaining 13 SEER Areas contribute cases for the entire period 1996-2003. Rates are based on follow-up of patients into 2004.  
<sup>d</sup> Period survival provides a more up-to-date estimate of survival by piecing together the most recent conditional survival estimates from several cohorts. It is computed here using three calendar year blocks (2001-2003: 0-1 year survival), (2000-2002: 1-2 year survival), (1999-2001: 2-3 year survival), (1998-2000: 3-4 year survival), (1997-1999: 4-5 years survival).  
<sup>e</sup> The difference in rates between 1975-1977 and 1996-2003 is statistically significant (p<.05).  
<sup>f</sup> The standard error of the survival rate is between 5 and 10 percentage points.  
<sup>g</sup> The standard error of the survival rate is greater than 10 percentage points.  
- Statistic could not be calculated due to fewer than 16 cases during the time period.

Table VI-11  
RECTUM CANCER (Invasive)

SURVIVAL RATES, BY RACE, SEX, DIAGNOSIS YEAR, STAGE AND AGE

	All Races			Whites			Blacks		
	Total	Males	Females	Total	Males	Females	Total	Males	Females
<u>5-YR RELATIVE SURVIVAL RATES</u>									
YEAR OF DIAGNOSIS:									
1960-1963 <sup>a</sup>	-	-	-	38	36	41	27	28	27
1970-1973 <sup>a</sup>	-	-	-	45	43	48	30	20	40
1975-1977 <sup>b</sup>	49.2	48.1	50.6	49.4	48.4	50.5	44.9	41.7	47.4
1978-1980 <sup>b</sup>	50.4	49.8	51.1	51.2	50.7	51.9	35.4	35.1	35.5
1981-1983 <sup>b</sup>	53.0	51.5	54.8	53.8	52.3	55.4	40.6	38.3	42.9
1984-1986 <sup>b</sup>	57.2	56.4	58.4	58.0	57.3	58.9	46.1	43.3	48.8
1987-1989 <sup>b</sup>	59.1	58.8	59.5	59.6	59.8	59.4	53.5	49.0	58.0
1990-1992 <sup>b</sup>	60.4	59.6	61.5	61.2	60.4	62.2	52.2	54.1	49.8
1993-1995 <sup>b</sup>	61.2	59.9	62.9	61.7	60.4	63.2	54.8	52.1	57.9
1996-2003 <sup>b</sup>	65.8 <sup>e</sup>	65.1 <sup>e</sup>	66.7 <sup>e</sup>	66.4 <sup>e</sup>	65.7 <sup>e</sup>	67.3 <sup>e</sup>	58.4 <sup>e</sup>	57.1 <sup>e</sup>	59.6 <sup>e</sup>
<u>5-YR PERIOD SURVIVAL RATES<sup>cd</sup></u>									
YEAR OF DIAGNOSIS:									
1996-2003	65.5	65.0	66.0	66.3	66.1	66.5	56.1	54.7	57.2
<u>STAGE DISTRIBUTION (%) 1996-2003<sup>c</sup></u>									
All Stages									
Number of cases	50,987	28,735	22,252	41,590	23,512	18,078	4,252	2,189	2,063
Percent	100%	100%	100%	100%	100%	100%	100%	100%	100%
Localized	45	44	45	45	44	45	42	40	43
Regional	34	34	34	34	35	34	31	31	30
Distant	15	16	14	15	16	14	18	20	17
Unstaged	6	6	7	6	5	6	9	8	9
<u>5-YR RELATIVE SURVIVAL RATES, 1996-2003<sup>c</sup></u>									
AGE AT DIAGNOSIS:									
<45	67.2	63.9	71.3	69.0	66.6	72.0	59.5	52.8	66.7
45-54	70.6	68.3	74.1	71.4	68.7	75.5	64.3	64.3	64.1
55-64	68.0	67.2	69.5	68.7	67.8	70.2	59.4	55.4	64.3
65-74	66.3	64.8	68.3	66.8	65.4	68.7	54.3	51.5	56.7
75+	55.7	55.2	56.1	56.6	56.8	56.4	41.2	37.4	43.4
Under 65	68.8	67.1	71.4	69.7	67.9	72.4	61.2	58.2	64.8
65 and over	61.6	61.1	62.1	62.2	62.1	62.3	49.3	46.7	50.8
STAGE:									
All Stages	65.0	64.1	66.2	65.6	64.9	66.4	56.6	54.5	58.7
Localized	87.8	87.3	88.4	88.0	87.6	88.5	83.0	81.7	84.1
Regional	63.4	63.0	64.0	64.4	63.9	65.1	52.8	53.2	52.0
Distant	8.5	8.0	9.2	8.7	8.2	9.4	7.3	7.9	6.3
Unstaged	44.9	46.5	42.8	43.7	47.0	39.7	45.7	39.0 <sup>f</sup>	51.7 <sup>f</sup>

<sup>a</sup> Rates are based on End Results data from a series of hospital registries and one population-based registry.  
<sup>b</sup> Rates are from the SEER 9 areas (San Francisco, Connecticut, Detroit, Hawaii, Iowa, New Mexico, Seattle, Utah, Atlanta).  
Rates are based on follow-up of patients into 2004.  
<sup>c</sup> Rates are from the SEER 17 areas (San Francisco, Connecticut, Detroit, Hawaii, Iowa, New Mexico, Seattle, Utah, Atlanta, San Jose-Monterey, Los Angeles, Alaska Native Registry, Rural Georgia, California excluding SF/SJM/LA, Kentucky, Louisiana and New Jersey). California excluding SF/SJM/LA, Kentucky, Louisiana, and New Jersey contribute cases for diagnosis years 2000-2003. The remaining 13 SEER Areas contribute cases for the entire period 1996-2003. Rates are based on follow-up of patients into 2004.  
<sup>d</sup> Period survival provides a more up-to-date estimate of survival by piecing together the most recent conditional survival estimates from several cohorts. It is computed here using three calendar year blocks (2001-2003: 0-1 year survival), (2000-2002: 1-2 year survival), (1999-2001: 2-3 year survival), (1998-2000: 3-4 year survival), (1997-1999: 4-5 years survival).  
<sup>e</sup> The difference in rates between 1975-1977 and 1996-2003 is statistically significant (p<.05).  
<sup>f</sup> The standard error of the survival rate is between 5 and 10 percentage points.  
<sup>g</sup> The standard error of the survival rate is greater than 10 percentage points.  
- Statistic could not be calculated due to fewer than 16 cases during the time period.

Table VI-12  
COLON AND RECTUM CANCER (Invasive)

SURVIVAL RATES<sup>a</sup>

By Year of Diagnosis

All Races, Males and Females

Year of Diagnosis

	1975- 1979	1980- 1984	1985	1986	1987	1988	1989	1990	1991	1992	1993	1994	1995	1996	1997	1998	1999	2000	2001	2002	2003
Relative Survival Rates (SEER <sup>b</sup> )																					
1-year	74.8	78.1	80.0	81.3	80.9	80.3	81.4	81.9	82.6	81.8	80.9	81.7	80.2	81.9	80.9	82.6	82.8	82.6	83.7	83.9	83.1
2-year	63.8	67.9	70.9	72.1	72.0	71.9	72.5	73.5	74.0	73.4	72.9	73.1	72.0	74.0	73.1	75.3	75.3	75.2	76.5	77.7	
3-year	57.6	61.6	65.1	66.6	66.5	66.5	67.7	68.5	68.5	68.0	67.8	68.1	66.4	69.2	68.0	70.2	70.8	71.0	72.0		
4-year	53.9	57.7	61.4	62.9	62.5	63.0	63.9	64.3	65.1	64.4	63.8	64.0	62.6	65.7	65.1	67.3	67.8	67.8			
5-year	51.4	55.0	59.0	60.5	60.2	60.5	61.2	62.1	62.7	62.2	61.1	61.1	60.5	63.4	62.4	64.4	65.7				
6-year	49.7	53.1	57.3	58.5	58.6	58.9	59.9	60.7	60.7	60.6	59.5	59.5	58.1	62.1	60.6	62.8					
7-year	48.7	51.7	56.0	57.1	56.9	57.5	58.4	59.1	59.1	59.0	57.9	58.2	56.5	61.1	59.8						
8-year	47.9	50.8	55.3	55.9	56.2	56.6	57.2	57.6	57.9	57.5	56.9	57.3	56.1	60.5							
9-year	47.3	50.1	54.3	55.3	55.4	55.7	56.3	56.9	56.7	56.7	56.0	56.9	55.9								
10-year	46.7	49.4	53.7	55.0	54.6	54.8	55.4	56.3	56.1	55.9	55.4	55.9									
11-year	46.3	48.9	53.2	54.6	54.5	54.1	54.6	55.9	55.9	55.3	54.6										
12-year	45.9	48.6	53.0	54.4	53.8	53.3	54.4	55.5	55.7	55.3											
13-year	45.6	48.4	52.6	53.8	52.7	52.4	53.9	55.1	55.3												
14-year	45.2	48.0	52.2	53.2	52.6	52.2	53.9	54.7													
15-year	44.9	47.8	51.3	53.0	52.1	51.6	53.3														
16-year	44.7	47.3	51.1	52.5	51.8	51.6															
17-year	44.4	46.9	50.4	51.8	51.8																
18-year	44.1	46.6	50.1	51.5																	
19-year	44.1	46.2	49.9																		
20-year	44.1	46.0																			

<sup>a</sup> Survival rates are relative rates expressed as percents.

<sup>b</sup> Rates are from the SEER 9 areas (San Francisco, Connecticut, Detroit, Hawaii, Iowa, New Mexico, Seattle, Utah, and Atlanta).

Table VI-13  
COLON AND RECTUM CANCER (Invasive)

SURVIVAL RATES<sup>a</sup>

By Year of Diagnosis

All Races, Males

Year of Diagnosis

	1975- 1979	1980- 1984	1985	1986	1987	1988	1989	1990	1991	1992	1993	1994	1995	1996	1997	1998	1999	2000	2001	2002	2003
Relative Survival Rates (SEER <sup>b</sup> )																					
1-year	74.8	79.0	81.1	82.6	81.8	81.1	82.1	83.1	83.3	82.9	81.7	82.8	81.7	83.1	81.7	82.7	83.8	84.3	85.6	83.8	83.9
2-year	63.8	68.3	72.2	73.3	73.1	73.4	73.3	74.4	75.0	74.3	73.5	73.9	73.1	75.4	74.1	75.2	75.7	77.0	78.1	77.3	
3-year	57.0	61.8	66.4	67.5	67.3	67.5	68.5	69.7	69.4	68.7	68.4	69.0	67.2	70.1	68.6	69.4	71.1	72.8	73.5		
4-year	53.0	57.4	62.3	63.7	62.8	62.9	64.3	65.2	65.5	64.6	63.7	63.9	63.3	65.7	65.7	66.1	68.1	69.8			
5-year	50.3	54.5	59.5	61.0	60.4	60.7	61.6	62.4	62.7	61.9	60.6	60.4	60.2	63.0	62.8	63.3	65.6				
6-year	48.3	52.4	57.6	58.6	59.0	58.9	60.1	60.7	59.9	60.2	59.0	58.6	57.4	61.6	60.8	61.4					
7-year	47.2	50.8	55.9	57.4	57.2	57.5	58.6	58.6	57.8	58.6	57.3	57.2	55.9	60.5	60.2						
8-year	46.2	49.7	55.4	56.4	56.4	56.5	57.7	57.0	56.4	56.8	56.5	55.7	55.3	60.2							
9-year	45.6	48.9	54.4	55.7	55.4	55.3	56.3	56.6	55.5	55.8	55.0	55.1	55.0								
10-year	44.9	48.2	53.8	55.5	54.7	54.5	55.2	56.0	54.8	55.2	54.1	54.0									
11-year	44.5	47.7	53.3	55.0	54.2	54.3	54.2	55.7	54.8	54.4	52.9										
12-year	43.9	47.4	52.9	54.6	53.2	53.3	53.7	55.2	54.8	54.4											
13-year	43.5	47.2	52.3	54.0	52.4	52.6	53.1	54.9	54.5												
14-year	42.9	46.6	51.7	53.5	52.3	52.6	52.7	54.5													
15-year	42.8	46.5	51.0	52.8	52.2	52.1	51.8														
16-year	42.5	46.3	50.9	52.4	52.0	52.1															
17-year	42.3	45.6	50.4	52.3	52.0																
18-year	42.1	45.3	50.4	51.7																	
19-year	42.0	45.0	49.8																		
20-year	41.9	44.6																			

<sup>a</sup> Survival rates are relative rates expressed as percents.

<sup>b</sup> Rates are from the SEER 9 areas (San Francisco, Connecticut, Detroit, Hawaii, Iowa, New Mexico, Seattle, Utah, and Atlanta).

Table VI-14  
COLON AND RECTUM CANCER (Invasive)

SURVIVAL RATES<sup>a</sup>

By Year of Diagnosis

All Races, Females

Year of Diagnosis

	1975- 1979	1980- 1984	1985	1986	1987	1988	1989	1990	1991	1992	1993	1994	1995	1996	1997	1998	1999	2000	2001	2002	2003
Relative Survival Rates (SEER <sup>b</sup> )																					
1-year	74.8	77.3	78.8	80.1	80.0	79.4	80.6	80.7	81.8	80.7	80.2	80.7	78.8	80.7	80.1	82.6	81.8	80.9	81.7	84.0	82.3
2-year	63.8	67.5	69.6	70.8	70.8	70.3	71.6	72.6	73.0	72.5	72.2	72.2	70.9	72.6	72.0	75.4	74.8	73.3	74.9	78.0	
3-year	58.2	61.4	63.7	65.7	65.6	65.4	67.0	67.2	67.6	67.2	67.3	67.3	65.6	68.3	67.4	71.0	70.5	69.2	70.4		
4-year	54.7	57.9	60.5	62.2	62.2	63.0	63.4	63.5	64.7	64.2	63.9	64.1	62.0	65.7	64.5	68.5	67.5	65.8			
5-year	52.4	55.5	58.6	60.1	60.0	60.3	60.8	61.9	62.8	62.5	61.6	61.9	60.8	63.9	61.9	65.5	65.7				
6-year	51.0	53.8	57.0	58.5	58.1	58.9	59.6	60.7	61.5	61.0	60.0	60.5	58.8	62.7	60.4	64.2					
7-year	50.1	52.5	56.1	56.8	56.7	57.6	58.2	59.6	60.5	59.4	58.4	59.2	57.2	61.8	59.2						
8-year	49.3	51.7	55.1	55.4	56.1	56.7	56.8	58.2	59.4	58.2	57.3	58.8	56.8	60.6							
9-year	48.9	51.1	54.3	54.9	55.4	56.0	56.2	57.3	58.0	57.6	56.9	58.8	56.6								
10-year	48.4	50.5	53.7	54.3	54.6	55.2	55.6	56.7	57.4	56.8	56.7	57.8									
11-year	47.8	50.1	53.0	54.0	54.5	53.8	54.9	56.1	56.8	56.2	56.3										
12-year	47.6	49.8	53.0	54.0	54.5	53.3	54.9	55.8	56.6	55.9											
13-year	47.4	49.5	52.9	53.6	52.9	52.3	54.6	55.2	56.2												
14-year	47.0	49.2	52.6	52.8	52.8	51.5	54.6	54.8													
15-year	46.7	48.9	51.6	52.8	52.0	51.1	54.6														
16-year	46.4	48.2	51.2	52.6	51.5	51.1															
17-year	46.2	48.0	50.4	51.4	51.1																
18-year	45.8	47.7	49.7	51.3																	
19-year	45.8	47.3	49.7																		
20-year	45.8	47.2																			

<sup>a</sup> Survival rates are relative rates expressed as percents.

<sup>b</sup> Rates are from the SEER 9 areas (San Francisco, Connecticut, Detroit, Hawaii, Iowa, New Mexico, Seattle, Utah, and Atlanta).

Table VI-15  
COLON AND RECTUM CANCER (Invasive)

Risk of Being Diagnosed With Cancer in 10, 20 and 30 Years, Lifetime Risk of Being Diagnosed with Cancer, and  
Lifetime Risk of Dying from Cancer Given Cancer Free At Current Age  
Both Sexes, 2002-2004 By Race/Ethnicity

Race/ Ethnicity	Current Age	Risk of Being Diagnosed with Cancer						Risk of Dying from Cancer	
		+10 yrs Percent ( 95% C.I. )	+20 yrs Percent ( 95% C.I. )	+30 yrs Percent ( 95% C.I. )	Eventually Percent ( 95% C.I. )	Eventually Percent ( 95% C.I. )			
All Races	0	0.00 ( 0.00, 0.00 )	0.00 ( 0.00, 0.00 )	0.02 ( 0.01, 0.02 )	5.42 ( 5.39, 5.46 )	2.20 ( 2.19, 2.21 )			
	10	0.00 ( 0.00, 0.00 )	0.02 ( 0.01, 0.02 )	0.07 ( 0.07, 0.08 )	5.49 ( 5.46, 5.53 )	2.23 ( 2.22, 2.24 )			
	20	0.01 ( 0.01, 0.01 )	0.07 ( 0.07, 0.08 )	0.28 ( 0.27, 0.28 )	5.51 ( 5.48, 5.55 )	2.24 ( 2.23, 2.25 )			
	30	0.06 ( 0.06, 0.06 )	0.27 ( 0.26, 0.27 )	0.87 ( 0.86, 0.88 )	5.55 ( 5.51, 5.58 )	2.26 ( 2.25, 2.27 )			
	40	0.21 ( 0.21, 0.22 )	0.82 ( 0.81, 0.83 )	2.04 ( 2.03, 2.06 )	5.56 ( 5.53, 5.60 )	2.27 ( 2.26, 2.29 )			
	50	0.63 ( 0.62, 0.64 )	1.89 ( 1.87, 1.91 )	3.70 ( 3.67, 3.73 )	5.51 ( 5.48, 5.55 )	2.28 ( 2.27, 2.29 )			
	60	1.35 ( 1.33, 1.36 )	3.28 ( 3.26, 3.31 )	4.79 ( 4.75, 4.82 )	5.22 ( 5.18, 5.25 )	2.24 ( 2.23, 2.25 )			
	70	2.26 ( 2.23, 2.28 )	4.00 ( 3.97, 4.04 )	- ( - , - )	4.51 ( 4.47, 4.54 )	2.08 ( 2.07, 2.09 )			
80	2.53 ( 2.50, 2.56 )	- ( - , - )	- ( - , - )	3.25 ( 3.22, 3.29 )	1.78 ( 1.77, 1.79 )				
White	0	0.00 ( 0.00, 0.00 )	0.00 ( 0.00, 0.00 )	0.02 ( 0.01, 0.02 )	5.41 ( 5.37, 5.45 )	2.18 ( 2.17, 2.19 )			
	10	0.00 ( 0.00, 0.00 )	0.02 ( 0.01, 0.02 )	0.07 ( 0.07, 0.08 )	5.47 ( 5.43, 5.51 )	2.21 ( 2.20, 2.22 )			
	20	0.01 ( 0.01, 0.02 )	0.07 ( 0.07, 0.07 )	0.27 ( 0.27, 0.28 )	5.49 ( 5.45, 5.53 )	2.22 ( 2.21, 2.23 )			
	30	0.06 ( 0.06, 0.06 )	0.26 ( 0.25, 0.26 )	0.84 ( 0.83, 0.85 )	5.52 ( 5.48, 5.56 )	2.23 ( 2.22, 2.24 )			
	40	0.20 ( 0.20, 0.21 )	0.79 ( 0.78, 0.80 )	2.00 ( 1.98, 2.02 )	5.53 ( 5.49, 5.57 )	2.25 ( 2.23, 2.26 )			
	50	0.60 ( 0.59, 0.61 )	1.85 ( 1.83, 1.87 )	3.68 ( 3.65, 3.71 )	5.48 ( 5.44, 5.52 )	2.25 ( 2.24, 2.27 )			
	60	1.33 ( 1.31, 1.34 )	3.27 ( 3.24, 3.30 )	4.78 ( 4.74, 4.82 )	5.19 ( 5.15, 5.23 )	2.21 ( 2.20, 2.22 )			
	70	2.26 ( 2.23, 2.28 )	4.01 ( 3.97, 4.04 )	- ( - , - )	4.49 ( 4.45, 4.53 )	2.05 ( 2.04, 2.07 )			
80	2.54 ( 2.50, 2.57 )	- ( - , - )	- ( - , - )	3.23 ( 3.19, 3.28 )	1.75 ( 1.74, 1.77 )				
Black	0	0.00 ( 0.00, 0.00 )	0.00 ( 0.00, 0.00 )	0.01 ( 0.01, 0.01 )	5.24 ( 5.13, 5.35 )	2.42 ( 2.39, 2.46 )			
	10	0.00 ( 0.00, 0.00 )	0.01 ( 0.01, 0.01 )	0.08 ( 0.07, 0.08 )	5.37 ( 5.26, 5.48 )	2.48 ( 2.45, 2.52 )			
	20	0.01 ( 0.01, 0.01 )	0.07 ( 0.07, 0.08 )	0.33 ( 0.31, 0.34 )	5.40 ( 5.29, 5.51 )	2.50 ( 2.46, 2.53 )			
	30	0.07 ( 0.06, 0.07 )	0.32 ( 0.31, 0.34 )	1.12 ( 1.08, 1.15 )	5.48 ( 5.37, 5.59 )	2.53 ( 2.50, 2.57 )			
	40	0.26 ( 0.25, 0.28 )	1.08 ( 1.04, 1.11 )	2.50 ( 2.43, 2.56 )	5.55 ( 5.43, 5.66 )	2.57 ( 2.54, 2.61 )			
	50	0.86 ( 0.83, 0.89 )	2.35 ( 2.29, 2.42 )	4.09 ( 3.99, 4.18 )	5.57 ( 5.45, 5.70 )	2.61 ( 2.57, 2.65 )			
	60	1.69 ( 1.63, 1.74 )	3.64 ( 3.54, 3.73 )	4.92 ( 4.80, 5.04 )	5.31 ( 5.18, 5.44 )	2.59 ( 2.54, 2.63 )			
	70	2.47 ( 2.39, 2.56 )	4.10 ( 3.98, 4.22 )	- ( - , - )	4.59 ( 4.46, 4.73 )	2.44 ( 2.39, 2.48 )			
80	2.64 ( 2.52, 2.77 )	- ( - , - )	- ( - , - )	3.45 ( 3.29, 3.62 )	2.12 ( 2.07, 2.18 )				

Devcan Version 6.2.0, April 2006, National Cancer Institute (<http://srab.cancer.gov/devcan/>).

Source: Incidence data are from the SEER 17 areas (San Francisco, Connecticut, Detroit, Hawaii, Iowa, New Mexico, Seattle, Utah, Atlanta, San Jose-Monterey, Los Angeles, Alaska Native Registry, Rural Georgia, California excluding SF/SJM/LA, Kentucky, Louisiana and New Jersey). Mortality data are from the NCHS public use data file for the total US.

- Statistic could not be calculated.

A percent or confidence interval value of 0.00 represents a value that is below 0.005.

Table VI-15 - continued  
 COLON AND RECTUM CANCER (Invasive)

Risk of Being Diagnosed With Cancer in 10, 20 and 30 Years, Lifetime Risk of Being Diagnosed with Cancer, and  
 Lifetime Risk of Dying from Cancer Given Cancer Free At Current Age  
 Both Sexes, 2002-2004 By Race/Ethnicity

Race/ Ethnicity	Current Age	Risk of Being Diagnosed with Cancer				Risk of Dying from Cancer	
		+10 yrs Percent ( 95% C.I. )	+20 yrs Percent ( 95% C.I. )	+30 yrs Percent ( 95% C.I. )	Eventually Percent ( 95% C.I. )	Eventually Percent ( 95% C.I. )	
Asian/ Pacific Islander	0	0.00 ( 0.00, 0.00 )	0.00 ( 0.00, 0.00 )	0.02 ( 0.01, 0.02 )	5.58 ( 5.41, 5.76 )	2.17 ( 2.05, 2.29 )	
	10	0.00 ( 0.00, 0.00 )	0.02 ( 0.01, 0.02 )	0.08 ( 0.07, 0.09 )	5.63 ( 5.46, 5.81 )	2.19 ( 2.07, 2.31 )	
	20	0.01 ( 0.01, 0.02 )	0.08 ( 0.07, 0.08 )	0.27 ( 0.25, 0.28 )	5.64 ( 5.47, 5.83 )	2.19 ( 2.08, 2.32 )	
	30	0.06 ( 0.06, 0.07 )	0.26 ( 0.24, 0.27 )	0.79 ( 0.76, 0.82 )	5.66 ( 5.48, 5.84 )	2.20 ( 2.08, 2.33 )	
	40	0.19 ( 0.18, 0.21 )	0.73 ( 0.70, 0.76 )	1.77 ( 1.71, 1.83 )	5.63 ( 5.46, 5.81 )	2.19 ( 2.08, 2.32 )	
	50	0.55 ( 0.52, 0.57 )	1.60 ( 1.55, 1.66 )	3.25 ( 3.16, 3.34 )	5.52 ( 5.34, 5.71 )	2.17 ( 2.05, 2.30 )	
	60	1.10 ( 1.05, 1.14 )	2.81 ( 2.72, 2.90 )	4.39 ( 4.26, 4.52 )	5.16 ( 4.98, 5.36 )	2.12 ( 2.00, 2.25 )	
	70	1.87 ( 1.80, 1.95 )	3.60 ( 3.47, 3.73 )	- ( - , - )	4.45 ( 4.27, 4.65 )	1.99 ( 1.86, 2.14 )	
	80	2.18 ( 2.06, 2.30 )	- ( - , - )	- ( - , - )	3.26 ( 3.05, 3.48 )	1.79 ( 1.64, 1.96 )	
American Indian/ Alaska Native <sup>a</sup>	0	0.00 ( 0.00, 0.02 )	0.00 ( 0.00, 0.03 )	0.02 ( 0.01, 0.05 )	4.27 ( 3.80, 4.86 )	1.86 ( 1.66, 2.09 )	
	10	0.00 ( 0.00, 0.01 )	0.02 ( 0.01, 0.04 )	0.09 ( 0.06, 0.13 )	4.34 ( 3.86, 4.95 )	1.89 ( 1.69, 2.12 )	
	20	0.02 ( 0.01, 0.04 )	0.09 ( 0.06, 0.13 )	0.29 ( 0.23, 0.36 )	4.37 ( 3.89, 4.98 )	1.91 ( 1.71, 2.14 )	
	30	0.08 ( 0.05, 0.11 )	0.28 ( 0.22, 0.34 )	0.79 ( 0.68, 0.92 )	4.43 ( 3.94, 5.05 )	1.94 ( 1.74, 2.18 )	
	40	0.21 ( 0.16, 0.26 )	0.74 ( 0.63, 0.86 )	1.76 ( 1.55, 1.99 )	4.47 ( 3.97, 5.11 )	1.98 ( 1.77, 2.23 )	
	50	0.55 ( 0.46, 0.66 )	1.62 ( 1.41, 1.85 )	3.11 ( 2.77, 3.49 )	4.45 ( 3.93, 5.11 )	2.02 ( 1.80, 2.28 )	
	60	1.15 ( 0.96, 1.35 )	2.76 ( 2.41, 3.14 )	3.93 ( 3.45, 4.46 )	4.19 ( 3.65, 4.89 )	2.00 ( 1.77, 2.28 )	
	70	1.90 ( 1.58, 2.25 )	3.28 ( 2.78, 3.84 )	- ( - , - )	3.59 ( 3.02, 4.36 )	1.89 ( 1.62, 2.21 )	
	80	1.96 ( 1.50, 2.54 )	- ( - , - )	- ( - , - )	2.41 ( 1.80, 3.34 )	1.55 ( 1.23, 1.96 )	
Hispanic <sup>b</sup>	0	0.00 ( 0.00, 0.00 )	0.00 ( 0.00, 0.00 )	0.01 ( 0.01, 0.02 )	4.82 ( 4.69, 4.97 )	1.92 ( 1.86, 1.98 )	
	10	0.00 ( 0.00, 0.00 )	0.01 ( 0.01, 0.02 )	0.06 ( 0.06, 0.07 )	4.88 ( 4.74, 5.03 )	1.94 ( 1.88, 2.00 )	
	20	0.01 ( 0.01, 0.01 )	0.06 ( 0.05, 0.06 )	0.22 ( 0.21, 0.23 )	4.90 ( 4.76, 5.05 )	1.95 ( 1.89, 2.01 )	
	30	0.05 ( 0.04, 0.05 )	0.21 ( 0.20, 0.22 )	0.70 ( 0.67, 0.72 )	4.93 ( 4.78, 5.07 )	1.96 ( 1.90, 2.02 )	
	40	0.17 ( 0.16, 0.17 )	0.65 ( 0.63, 0.68 )	1.67 ( 1.62, 1.72 )	4.93 ( 4.79, 5.08 )	1.97 ( 1.91, 2.03 )	
	50	0.50 ( 0.48, 0.52 )	1.54 ( 1.49, 1.59 )	3.05 ( 2.97, 3.14 )	4.88 ( 4.73, 5.03 )	1.97 ( 1.91, 2.04 )	
	60	1.10 ( 1.06, 1.14 )	2.69 ( 2.61, 2.77 )	3.99 ( 3.88, 4.11 )	4.61 ( 4.46, 4.77 )	1.92 ( 1.86, 1.99 )	
	70	1.79 ( 1.72, 1.86 )	3.26 ( 3.14, 3.38 )	- ( - , - )	3.96 ( 3.80, 4.13 )	1.78 ( 1.71, 1.85 )	
	80	1.96 ( 1.85, 2.07 )	- ( - , - )	- ( - , - )	2.89 ( 2.71, 3.09 )	1.52 ( 1.44, 1.60 )	

Devcan Version 6.2.0, April 2006, National Cancer Institute (<http://srab.cancer.gov/devcan/>).

Source: Incidence data are from the SEER 17 areas (San Francisco, Connecticut, Detroit, Hawaii, Iowa, New Mexico, Seattle, Utah, Atlanta, San Jose-Monterey, Los Angeles, Alaska Native Registry, Rural Georgia, California excluding SF/SJM/LA, Kentucky, Louisiana and New Jersey). Mortality data are from the NCHS public use data file for the total US.

<sup>a</sup> Underlying incidence and mortality data for American Indian/Alaska Native are based on the CHSDA (Contract Health Service Delivery Area) counties.

<sup>b</sup> Hispanic is not mutually exclusive from whites, blacks, Asian/Pacific Islanders, and American Indians/Alaska Natives. Underlying incidence data for Hispanics are based on NHIA and exclude cases from the Alaska Native Registry and Kentucky. Underlying mortality data for Hispanics exclude deaths from Minnesota, New Hampshire and North Dakota.

- Statistic could not be calculated.

A percent or confidence interval value of 0.00 represents a value that is below 0.005.



Table VI-15 - continued  
 COLON AND RECTUM CANCER (Invasive)

Risk of Being Diagnosed With Cancer in 10, 20 and 30 Years, Lifetime Risk of Being Diagnosed with Cancer, and  
 Lifetime Risk of Dying from Cancer Given Cancer Free At Current Age  
 Males, 2002-2004 By Race/Ethnicity

Race/ Ethnicity	Current Age	Risk of Being Diagnosed with Cancer						Risk of Dying from Cancer	
		+10 yrs Percent ( 95% C.I. )	+20 yrs Percent ( 95% C.I. )	+30 yrs Percent ( 95% C.I. )	Eventually Percent ( 95% C.I. )	Eventually Percent ( 95% C.I. )			
All Races	0	0.00 ( 0.00, 0.00 )	0.00 ( 0.00, 0.00 )	0.02 ( 0.01, 0.02 )	5.65 ( 5.60, 5.70 )	2.29 ( 2.27, 2.30 )			
	10	0.00 ( 0.00, 0.00 )	0.02 ( 0.01, 0.02 )	0.08 ( 0.07, 0.08 )	5.73 ( 5.67, 5.78 )	2.32 ( 2.30, 2.34 )			
	20	0.01 ( 0.01, 0.02 )	0.07 ( 0.07, 0.08 )	0.29 ( 0.29, 0.30 )	5.76 ( 5.70, 5.81 )	2.33 ( 2.32, 2.35 )			
	30	0.06 ( 0.06, 0.06 )	0.28 ( 0.28, 0.29 )	0.97 ( 0.95, 0.98 )	5.82 ( 5.77, 5.87 )	2.36 ( 2.35, 2.38 )			
	40	0.22 ( 0.22, 0.23 )	0.92 ( 0.91, 0.93 )	2.34 ( 2.31, 2.37 )	5.86 ( 5.80, 5.91 )	2.39 ( 2.37, 2.41 )			
	50	0.72 ( 0.71, 0.74 )	2.19 ( 2.17, 2.22 )	4.20 ( 4.16, 4.24 )	5.85 ( 5.79, 5.90 )	2.41 ( 2.39, 2.43 )			
	60	1.60 ( 1.57, 1.62 )	3.77 ( 3.73, 3.82 )	5.21 ( 5.16, 5.26 )	5.56 ( 5.51, 5.62 )	2.38 ( 2.36, 2.40 )			
	70	2.62 ( 2.58, 2.66 )	4.35 ( 4.30, 4.41 )	- ( - , - )	4.78 ( 4.72, 4.84 )	2.20 ( 2.18, 2.22 )			
80	2.73 ( 2.68, 2.78 )	- ( - , - )	- ( - , - )	3.39 ( 3.33, 3.46 )	1.86 ( 1.84, 1.89 )				
White	0	0.00 ( 0.00, 0.00 )	0.00 ( 0.00, 0.00 )	0.02 ( 0.01, 0.02 )	5.65 ( 5.60, 5.71 )	2.28 ( 2.26, 2.29 )			
	10	0.00 ( 0.00, 0.00 )	0.02 ( 0.01, 0.02 )	0.07 ( 0.07, 0.08 )	5.72 ( 5.66, 5.78 )	2.31 ( 2.29, 2.32 )			
	20	0.01 ( 0.01, 0.02 )	0.07 ( 0.07, 0.08 )	0.29 ( 0.28, 0.29 )	5.75 ( 5.69, 5.81 )	2.32 ( 2.30, 2.34 )			
	30	0.06 ( 0.06, 0.06 )	0.27 ( 0.27, 0.28 )	0.94 ( 0.92, 0.96 )	5.80 ( 5.75, 5.86 )	2.34 ( 2.33, 2.36 )			
	40	0.22 ( 0.21, 0.23 )	0.89 ( 0.88, 0.91 )	2.31 ( 2.27, 2.34 )	5.84 ( 5.78, 5.90 )	2.37 ( 2.35, 2.39 )			
	50	0.70 ( 0.69, 0.71 )	2.16 ( 2.13, 2.19 )	4.18 ( 4.14, 4.23 )	5.83 ( 5.77, 5.89 )	2.39 ( 2.37, 2.41 )			
	60	1.58 ( 1.55, 1.61 )	3.76 ( 3.72, 3.81 )	5.21 ( 5.15, 5.27 )	5.54 ( 5.48, 5.60 )	2.35 ( 2.33, 2.37 )			
	70	2.62 ( 2.58, 2.66 )	4.35 ( 4.30, 4.41 )	- ( - , - )	4.75 ( 4.69, 4.82 )	2.17 ( 2.15, 2.19 )			
80	2.73 ( 2.68, 2.79 )	- ( - , - )	- ( - , - )	3.36 ( 3.30, 3.43 )	1.84 ( 1.81, 1.86 )				
Black	0	0.00 ( 0.00, 0.00 )	0.00 ( 0.00, 0.01 )	0.01 ( 0.01, 0.02 )	5.20 ( 5.04, 5.36 )	2.41 ( 2.36, 2.47 )			
	10	0.00 ( 0.00, 0.00 )	0.01 ( 0.01, 0.02 )	0.08 ( 0.07, 0.09 )	5.34 ( 5.18, 5.50 )	2.48 ( 2.43, 2.54 )			
	20	0.01 ( 0.01, 0.01 )	0.08 ( 0.07, 0.09 )	0.33 ( 0.31, 0.36 )	5.38 ( 5.22, 5.55 )	2.50 ( 2.45, 2.56 )			
	30	0.07 ( 0.06, 0.08 )	0.33 ( 0.31, 0.36 )	1.20 ( 1.15, 1.25 )	5.51 ( 5.34, 5.68 )	2.56 ( 2.50, 2.61 )			
	40	0.27 ( 0.25, 0.29 )	1.17 ( 1.11, 1.22 )	2.70 ( 2.61, 2.80 )	5.62 ( 5.45, 5.79 )	2.61 ( 2.56, 2.67 )			
	50	0.95 ( 0.91, 1.00 )	2.60 ( 2.50, 2.70 )	4.39 ( 4.25, 4.54 )	5.71 ( 5.53, 5.90 )	2.67 ( 2.62, 2.73 )			
	60	1.91 ( 1.82, 2.01 )	4.00 ( 3.85, 4.15 )	5.19 ( 5.01, 5.38 )	5.54 ( 5.34, 5.74 )	2.70 ( 2.63, 2.76 )			
	70	2.82 ( 2.68, 2.97 )	4.43 ( 4.24, 4.64 )	- ( - , - )	4.90 ( 4.67, 5.13 )	2.56 ( 2.49, 2.64 )			
80	2.98 ( 2.77, 3.21 )	- ( - , - )	- ( - , - )	3.84 ( 3.56, 4.15 )	2.23 ( 2.13, 2.33 )				

Devcan Version 6.2.0, April 2006, National Cancer Institute (<http://srab.cancer.gov/devcan/>).

Source: Incidence data are from the SEER 17 areas (San Francisco, Connecticut, Detroit, Hawaii, Iowa, New Mexico, Seattle, Utah, Atlanta, San Jose-Monterey, Los Angeles, Alaska Native Registry, Rural Georgia, California excluding SF/SJM/LA, Kentucky, Louisiana and New Jersey). Mortality data are from the NCHS public use data file for the total US.

- Statistic could not be calculated.

A percent or confidence interval value of 0.00 represents a value that is below 0.005.

Table VI-15 - continued  
 COLON AND RECTUM CANCER (Invasive)

Risk of Being Diagnosed With Cancer in 10, 20 and 30 Years, Lifetime Risk of Being Diagnosed with Cancer, and  
 Lifetime Risk of Dying from Cancer Given Cancer Free At Current Age  
 Males, 2002-2004 By Race/Ethnicity

Race/ Ethnicity	Current Age	Risk of Being Diagnosed with Cancer				Risk of Dying from Cancer	
		+10 yrs Percent ( 95% C.I. )	+20 yrs Percent ( 95% C.I. )	+30 yrs Percent ( 95% C.I. )	Eventually Percent ( 95% C.I. )	Eventually Percent ( 95% C.I. )	
Asian/ Pacific Islander	0	0.00 ( 0.00, 0.00 )	0.00 ( 0.00, 0.01 )	0.02 ( 0.01, 0.03 )	5.96 ( 5.72, 6.22 )	2.30 ( 2.14, 2.48 )	
	10	0.00 ( 0.00, 0.01 )	0.02 ( 0.01, 0.03 )	0.08 ( 0.07, 0.10 )	6.02 ( 5.78, 6.28 )	2.32 ( 2.16, 2.50 )	
	20	0.02 ( 0.01, 0.02 )	0.08 ( 0.07, 0.09 )	0.28 ( 0.25, 0.30 )	6.04 ( 5.79, 6.30 )	2.33 ( 2.16, 2.51 )	
	30	0.06 ( 0.05, 0.08 )	0.26 ( 0.24, 0.28 )	0.87 ( 0.83, 0.92 )	6.06 ( 5.81, 6.32 )	2.34 ( 2.17, 2.52 )	
	40	0.20 ( 0.18, 0.22 )	0.82 ( 0.77, 0.86 )	2.06 ( 1.97, 2.15 )	6.04 ( 5.80, 6.31 )	2.34 ( 2.17, 2.52 )	
	50	0.63 ( 0.59, 0.67 )	1.90 ( 1.81, 1.99 )	3.88 ( 3.73, 4.04 )	5.96 ( 5.71, 6.23 )	2.32 ( 2.15, 2.51 )	
	60	1.33 ( 1.25, 1.41 )	3.41 ( 3.26, 3.56 )	4.96 ( 4.75, 5.17 )	5.59 ( 5.33, 5.86 )	2.27 ( 2.10, 2.47 )	
	70	2.33 ( 2.20, 2.47 )	4.07 ( 3.86, 4.28 )	- ( - , - )	4.77 ( 4.51, 5.06 )	2.12 ( 1.94, 2.33 )	
	80	2.33 ( 2.15, 2.52 )	- ( - , - )	- ( - , - )	3.28 ( 2.99, 3.61 )	1.90 ( 1.67, 2.16 )	
American Indian/ Alaska Native <sup>a</sup>	0	0.00 ( 0.00, 0.04 )	0.00 ( 0.00, 0.04 )	0.01 ( 0.00, 0.05 )	3.74 ( 3.17, 4.66 )	1.94 ( 1.66, 2.31 )	
	10	0.00 ( 0.00, 0.02 )	0.01 ( 0.00, 0.04 )	0.09 ( 0.05, 0.15 )	3.82 ( 3.23, 4.75 )	1.98 ( 1.69, 2.36 )	
	20	0.01 ( 0.00, 0.04 )	0.09 ( 0.05, 0.15 )	0.28 ( 0.20, 0.37 )	3.86 ( 3.27, 4.80 )	2.00 ( 1.71, 2.39 )	
	30	0.09 ( 0.05, 0.15 )	0.27 ( 0.20, 0.37 )	0.79 ( 0.64, 0.97 )	3.95 ( 3.34, 4.91 )	2.05 ( 1.75, 2.45 )	
	40	0.20 ( 0.14, 0.28 )	0.73 ( 0.58, 0.91 )	1.88 ( 1.57, 2.24 )	4.00 ( 3.38, 5.01 )	2.11 ( 1.80, 2.52 )	
	50	0.56 ( 0.43, 0.72 )	1.78 ( 1.46, 2.14 )	3.03 ( 2.55, 3.59 )	4.01 ( 3.36, 5.06 )	2.19 ( 1.86, 2.62 )	
	60	1.33 ( 1.04, 1.67 )	2.70 ( 2.21, 3.28 )	3.74 ( 3.06, 4.54 )	3.78 ( 3.09, 4.91 )	2.18 ( 1.82, 2.66 )	
	70	1.66 ( 1.24, 2.18 )	2.91 ( 2.22, 3.77 )	- ( - , - )	2.96 ( 2.25, 4.24 )	2.06 ( 1.64, 2.63 )	
	80	1.89 ( 1.19, 2.90 )	- ( - , - )	- ( - , - )	1.97 ( 1.23, 3.72 )	1.78 ( 1.24, 2.59 )	
Hispanic <sup>b</sup>	0	0.00 ( 0.00, 0.00 )	0.00 ( 0.00, 0.00 )	0.01 ( 0.01, 0.02 )	5.08 ( 4.88, 5.30 )	2.10 ( 2.01, 2.20 )	
	10	0.00 ( 0.00, 0.00 )	0.01 ( 0.01, 0.02 )	0.06 ( 0.05, 0.07 )	5.15 ( 4.94, 5.37 )	2.13 ( 2.04, 2.23 )	
	20	0.01 ( 0.01, 0.01 )	0.06 ( 0.05, 0.07 )	0.23 ( 0.22, 0.25 )	5.18 ( 4.97, 5.40 )	2.14 ( 2.05, 2.24 )	
	30	0.05 ( 0.04, 0.05 )	0.22 ( 0.21, 0.24 )	0.78 ( 0.75, 0.82 )	5.22 ( 5.02, 5.45 )	2.16 ( 2.07, 2.27 )	
	40	0.18 ( 0.16, 0.19 )	0.74 ( 0.71, 0.78 )	1.98 ( 1.90, 2.06 )	5.25 ( 5.04, 5.48 )	2.18 ( 2.09, 2.29 )	
	50	0.59 ( 0.55, 0.62 )	1.86 ( 1.78, 1.94 )	3.63 ( 3.50, 3.76 )	5.23 ( 5.02, 5.47 )	2.20 ( 2.10, 2.30 )	
	60	1.36 ( 1.29, 1.43 )	3.26 ( 3.13, 3.39 )	4.53 ( 4.35, 4.72 )	4.98 ( 4.75, 5.22 )	2.16 ( 2.05, 2.27 )	
	70	2.20 ( 2.09, 2.32 )	3.68 ( 3.50, 3.87 )	- ( - , - )	4.20 ( 3.96, 4.47 )	2.00 ( 1.88, 2.12 )	
	80	2.12 ( 1.94, 2.31 )	- ( - , - )	- ( - , - )	2.86 ( 2.58, 3.19 )	1.70 ( 1.55, 1.86 )	

Devcan Version 6.2.0, April 2006, National Cancer Institute (<http://srab.cancer.gov/devcan/>).

Source: Incidence data are from the SEER 17 areas (San Francisco, Connecticut, Detroit, Hawaii, Iowa, New Mexico, Seattle, Utah, Atlanta, San Jose-Monterey, Los Angeles, Alaska Native Registry, Rural Georgia, California excluding SF/SJM/LA, Kentucky, Louisiana and New Jersey). Mortality data are from the NCHS public use data file for the total US.

<sup>a</sup> Underlying incidence and mortality data for American Indian/Alaska Native are based on the CHSDA (Contract Health Service Delivery Area) counties.

<sup>b</sup> Hispanic is not mutually exclusive from whites, blacks, Asian/Pacific Islanders, and American Indians/Alaska Natives. Underlying incidence data for Hispanics are based on NHIA and exclude cases from the Alaska Native Registry and Kentucky. Underlying mortality data for Hispanics exclude deaths from Minnesota, New Hampshire and North Dakota.

- Statistic could not be calculated.

A percent or confidence interval value of 0.00 represents a value that is below 0.005.

Table VI-15 - continued  
 COLON AND RECTUM CANCER (Invasive)

Risk of Being Diagnosed With Cancer in 10, 20 and 30 Years, Lifetime Risk of Being Diagnosed with Cancer, and  
 Lifetime Risk of Dying from Cancer Given Cancer Free At Current Age  
 Females, 2002-2004 By Race/Ethnicity

Race/ Ethnicity	Current Age	Risk of Being Diagnosed with Cancer						Risk of Dying from Cancer	
		+10 yrs Percent ( 95% C.I. )	+20 yrs Percent ( 95% C.I. )	+30 yrs Percent ( 95% C.I. )	Eventually Percent ( 95% C.I. )	Eventually Percent ( 95% C.I. )			
All Races	0	0.00 ( 0.00, 0.00 )	0.00 ( 0.00, 0.00 )	0.02 ( 0.01, 0.02 )	5.23 ( 5.18, 5.27 )	2.13 ( 2.12, 2.14 )			
	10	0.00 ( 0.00, 0.00 )	0.02 ( 0.01, 0.02 )	0.07 ( 0.07, 0.08 )	5.28 ( 5.24, 5.33 )	2.16 ( 2.14, 2.17 )			
	20	0.01 ( 0.01, 0.02 )	0.07 ( 0.07, 0.07 )	0.27 ( 0.26, 0.27 )	5.30 ( 5.25, 5.34 )	2.16 ( 2.15, 2.18 )			
	30	0.06 ( 0.05, 0.06 )	0.25 ( 0.25, 0.26 )	0.77 ( 0.76, 0.79 )	5.31 ( 5.26, 5.36 )	2.17 ( 2.16, 2.19 )			
	40	0.20 ( 0.19, 0.20 )	0.72 ( 0.71, 0.74 )	1.77 ( 1.74, 1.79 )	5.30 ( 5.25, 5.35 )	2.18 ( 2.16, 2.19 )			
	50	0.53 ( 0.52, 0.55 )	1.60 ( 1.58, 1.62 )	3.26 ( 3.22, 3.29 )	5.21 ( 5.17, 5.26 )	2.17 ( 2.16, 2.19 )			
	60	1.12 ( 1.10, 1.14 )	2.86 ( 2.83, 2.90 )	4.42 ( 4.38, 4.47 )	4.92 ( 4.87, 4.97 )	2.12 ( 2.11, 2.14 )			
	70	1.97 ( 1.94, 1.99 )	3.73 ( 3.69, 3.78 )	- ( - , - )	4.30 ( 4.25, 4.34 )	1.99 ( 1.98, 2.01 )			
80	2.40 ( 2.36, 2.44 )	- ( - , - )	- ( - , - )	3.17 ( 3.12, 3.22 )	1.73 ( 1.71, 1.75 )				
White	0	0.00 ( 0.00, 0.00 )	0.00 ( 0.00, 0.00 )	0.02 ( 0.01, 0.02 )	5.19 ( 5.14, 5.24 )	2.10 ( 2.09, 2.12 )			
	10	0.00 ( 0.00, 0.00 )	0.02 ( 0.01, 0.02 )	0.07 ( 0.07, 0.08 )	5.24 ( 5.19, 5.29 )	2.12 ( 2.11, 2.14 )			
	20	0.01 ( 0.01, 0.02 )	0.07 ( 0.07, 0.07 )	0.26 ( 0.25, 0.26 )	5.25 ( 5.20, 5.30 )	2.13 ( 2.11, 2.14 )			
	30	0.06 ( 0.05, 0.06 )	0.24 ( 0.24, 0.25 )	0.74 ( 0.72, 0.75 )	5.26 ( 5.21, 5.31 )	2.14 ( 2.12, 2.15 )			
	40	0.19 ( 0.18, 0.20 )	0.69 ( 0.67, 0.70 )	1.71 ( 1.68, 1.73 )	5.25 ( 5.20, 5.30 )	2.14 ( 2.13, 2.16 )			
	50	0.51 ( 0.49, 0.52 )	1.55 ( 1.52, 1.57 )	3.21 ( 3.17, 3.25 )	5.17 ( 5.11, 5.22 )	2.14 ( 2.12, 2.15 )			
	60	1.09 ( 1.07, 1.12 )	2.84 ( 2.80, 2.88 )	4.40 ( 4.36, 4.45 )	4.89 ( 4.83, 4.94 )	2.09 ( 2.07, 2.11 )			
	70	1.97 ( 1.94, 2.00 )	3.74 ( 3.69, 3.78 )	- ( - , - )	4.28 ( 4.23, 4.33 )	1.96 ( 1.95, 1.98 )			
80	2.41 ( 2.37, 2.45 )	- ( - , - )	- ( - , - )	3.15 ( 3.10, 3.20 )	1.71 ( 1.69, 1.72 )				
Black	0	0.00 ( 0.00, 0.00 )	0.00 ( 0.00, 0.00 )	0.01 ( 0.01, 0.02 )	5.31 ( 5.16, 5.46 )	2.44 ( 2.39, 2.49 )			
	10	0.00 ( 0.00, 0.00 )	0.01 ( 0.01, 0.02 )	0.07 ( 0.06, 0.08 )	5.42 ( 5.27, 5.58 )	2.49 ( 2.44, 2.54 )			
	20	0.01 ( 0.01, 0.02 )	0.07 ( 0.06, 0.08 )	0.32 ( 0.30, 0.35 )	5.44 ( 5.28, 5.59 )	2.50 ( 2.45, 2.55 )			
	30	0.06 ( 0.05, 0.07 )	0.32 ( 0.29, 0.34 )	1.05 ( 1.00, 1.09 )	5.47 ( 5.32, 5.63 )	2.52 ( 2.47, 2.57 )			
	40	0.26 ( 0.24, 0.28 )	1.00 ( 0.96, 1.05 )	2.31 ( 2.23, 2.40 )	5.50 ( 5.35, 5.66 )	2.54 ( 2.49, 2.59 )			
	50	0.78 ( 0.74, 0.82 )	2.15 ( 2.06, 2.23 )	3.83 ( 3.71, 3.95 )	5.47 ( 5.31, 5.64 )	2.55 ( 2.50, 2.61 )			
	60	1.50 ( 1.43, 1.58 )	3.35 ( 3.22, 3.47 )	4.70 ( 4.55, 4.86 )	5.15 ( 4.98, 5.32 )	2.50 ( 2.45, 2.56 )			
	70	2.22 ( 2.12, 2.33 )	3.86 ( 3.71, 4.02 )	- ( - , - )	4.40 ( 4.22, 4.58 )	2.35 ( 2.29, 2.41 )			
80	2.45 ( 2.31, 2.60 )	- ( - , - )	- ( - , - )	3.25 ( 3.06, 3.45 )	2.07 ( 2.00, 2.14 )				

Devcan Version 6.2.0, April 2006, National Cancer Institute (<http://srab.cancer.gov/devcan/>).

Source: Incidence data are from the SEER 17 areas (San Francisco, Connecticut, Detroit, Hawaii, Iowa, New Mexico, Seattle, Utah, Atlanta, San Jose-Monterey, Los Angeles, Alaska Native Registry, Rural Georgia, California excluding SF/SJM/LA, Kentucky, Louisiana and New Jersey). Mortality data are from the NCHS public use data file for the total US.

- Statistic could not be calculated.

A percent or confidence interval value of 0.00 represents a value that is below 0.005.

Table VI-15 - continued  
 COLON AND RECTUM CANCER (Invasive)

Risk of Being Diagnosed With Cancer in 10, 20 and 30 Years, Lifetime Risk of Being Diagnosed with Cancer, and  
 Lifetime Risk of Dying from Cancer Given Cancer Free At Current Age  
 Females, 2002-2004 By Race/Ethnicity

Race/ Ethnicity	Current Age	Risk of Being Diagnosed with Cancer				Risk of Dying from Cancer	
		+10 yrs Percent ( 95% C.I. )	+20 yrs Percent ( 95% C.I. )	+30 yrs Percent ( 95% C.I. )	Eventually Percent ( 95% C.I. )	Eventually Percent ( 95% C.I. )	
Asian/ Pacific Islander	0	0.00 ( 0.00, 0.00 )	0.00 ( 0.00, 0.01 )	0.01 ( 0.01, 0.02 )	5.27 ( 5.03, 5.54 )	2.06 ( 1.89, 2.24 )	
	10	0.00 ( 0.00, 0.00 )	0.01 ( 0.01, 0.02 )	0.07 ( 0.06, 0.08 )	5.31 ( 5.07, 5.58 )	2.07 ( 1.91, 2.26 )	
	20	0.01 ( 0.01, 0.02 )	0.07 ( 0.06, 0.08 )	0.26 ( 0.24, 0.28 )	5.32 ( 5.08, 5.59 )	2.08 ( 1.91, 2.26 )	
	30	0.06 ( 0.05, 0.07 )	0.25 ( 0.23, 0.27 )	0.72 ( 0.68, 0.76 )	5.33 ( 5.08, 5.60 )	2.08 ( 1.91, 2.26 )	
	40	0.19 ( 0.17, 0.21 )	0.66 ( 0.62, 0.70 )	1.52 ( 1.45, 1.60 )	5.29 ( 5.04, 5.56 )	2.07 ( 1.91, 2.26 )	
	50	0.47 ( 0.44, 0.51 )	1.35 ( 1.28, 1.42 )	2.73 ( 2.62, 2.85 )	5.16 ( 4.91, 5.43 )	2.05 ( 1.88, 2.23 )	
	60	0.90 ( 0.84, 0.96 )	2.32 ( 2.21, 2.43 )	3.93 ( 3.76, 4.10 )	4.83 ( 4.57, 5.10 )	1.99 ( 1.82, 2.18 )	
	70	1.53 ( 1.44, 1.62 )	3.25 ( 3.08, 3.42 )	- ( - , - )	4.21 ( 3.95, 4.50 )	1.89 ( 1.71, 2.09 )	
	80	2.07 ( 1.92, 2.23 )	- ( - , - )	- ( - , - )	3.24 ( 2.95, 3.56 )	1.71 ( 1.51, 1.94 )	
American Indian/ Alaska Native <sup>a</sup>	0	0.00 ( 0.00, 0.04 )	0.01 ( 0.00, 0.05 )	0.03 ( 0.01, 0.09 )	4.74 ( 4.03, 5.68 )	1.80 ( 1.53, 2.13 )	
	10	0.01 ( 0.00, 0.03 )	0.03 ( 0.01, 0.08 )	0.10 ( 0.06, 0.16 )	4.80 ( 4.09, 5.76 )	1.83 ( 1.56, 2.16 )	
	20	0.03 ( 0.01, 0.07 )	0.09 ( 0.05, 0.15 )	0.30 ( 0.22, 0.40 )	4.82 ( 4.10, 5.79 )	1.84 ( 1.57, 2.18 )	
	30	0.07 ( 0.03, 0.12 )	0.28 ( 0.20, 0.37 )	0.80 ( 0.64, 0.98 )	4.84 ( 4.12, 5.81 )	1.85 ( 1.58, 2.20 )	
	40	0.21 ( 0.15, 0.30 )	0.74 ( 0.59, 0.92 )	1.64 ( 1.37, 1.96 )	4.86 ( 4.13, 5.85 )	1.88 ( 1.60, 2.23 )	
	50	0.55 ( 0.42, 0.70 )	1.47 ( 1.20, 1.78 )	3.18 ( 2.69, 3.73 )	4.79 ( 4.04, 5.81 )	1.89 ( 1.60, 2.25 )	
	60	0.98 ( 0.76, 1.25 )	2.79 ( 2.31, 3.35 )	4.09 ( 3.42, 4.85 )	4.51 ( 3.73, 5.57 )	1.87 ( 1.57, 2.26 )	
	70	2.09 ( 1.65, 2.62 )	3.58 ( 2.90, 4.39 )	- ( - , - )	4.07 ( 3.25, 5.24 )	1.77 ( 1.44, 2.20 )	
	80	2.01 ( 1.42, 2.79 )	- ( - , - )	- ( - , - )	2.67 ( 1.83, 4.04 )	1.42 ( 1.03, 1.96 )	
Hispanic <sup>b</sup>	0	0.00 ( 0.00, 0.00 )	0.00 ( 0.00, 0.00 )	0.01 ( 0.01, 0.02 )	4.60 ( 4.41, 4.80 )	1.77 ( 1.70, 1.85 )	
	10	0.00 ( 0.00, 0.00 )	0.01 ( 0.01, 0.02 )	0.06 ( 0.05, 0.07 )	4.65 ( 4.45, 4.85 )	1.79 ( 1.72, 1.87 )	
	20	0.01 ( 0.01, 0.01 )	0.06 ( 0.05, 0.07 )	0.21 ( 0.20, 0.23 )	4.65 ( 4.46, 4.86 )	1.80 ( 1.72, 1.88 )	
	30	0.05 ( 0.04, 0.06 )	0.20 ( 0.19, 0.22 )	0.61 ( 0.58, 0.65 )	4.66 ( 4.47, 4.87 )	1.80 ( 1.72, 1.88 )	
	40	0.15 ( 0.14, 0.17 )	0.57 ( 0.53, 0.60 )	1.40 ( 1.33, 1.46 )	4.64 ( 4.44, 4.85 )	1.80 ( 1.72, 1.88 )	
	50	0.42 ( 0.39, 0.45 )	1.26 ( 1.20, 1.32 )	2.56 ( 2.46, 2.66 )	4.56 ( 4.36, 4.77 )	1.80 ( 1.72, 1.88 )	
	60	0.88 ( 0.82, 0.93 )	2.22 ( 2.12, 2.32 )	3.54 ( 3.40, 3.70 )	4.30 ( 4.09, 4.51 )	1.74 ( 1.66, 1.83 )	
	70	1.48 ( 1.39, 1.56 )	2.93 ( 2.79, 3.08 )	- ( - , - )	3.76 ( 3.55, 3.99 )	1.63 ( 1.55, 1.73 )	
	80	1.85 ( 1.71, 1.99 )	- ( - , - )	- ( - , - )	2.90 ( 2.67, 3.16 )	1.41 ( 1.31, 1.52 )	

Devcan Version 6.2.0, April 2006, National Cancer Institute (<http://srab.cancer.gov/devcan/>).

Source: Incidence data are from the SEER 17 areas (San Francisco, Connecticut, Detroit, Hawaii, Iowa, New Mexico, Seattle, Utah, Atlanta, San Jose-Monterey, Los Angeles, Alaska Native Registry, Rural Georgia, California excluding SF/SJM/LA, Kentucky, Louisiana and New Jersey). Mortality data are from the NCHS public use data file for the total US.

<sup>a</sup> Underlying incidence and mortality data for American Indian/Alaska Native are based on the CHSDA (Contract Health Service Delivery Area) counties.

<sup>b</sup> Hispanic is not mutually exclusive from whites, blacks, Asian/Pacific Islanders, and American Indians/Alaska Natives. Underlying incidence data for Hispanics are based on NHIA and exclude cases from the Alaska Native Registry and Kentucky. Underlying mortality data for Hispanics exclude deaths from Minnesota, New Hampshire and North Dakota.

- Statistic could not be calculated.

A percent or confidence interval value of 0.00 represents a value that is below 0.005.

Table VI-16  
COLON AND RECTUM CANCER (Invasive)

SEER INCIDENCE AND U.S. MORTALITY  
AGE-ADJUSTED RATES AND TRENDS<sup>a</sup>  
By Race/Ethnicity and Sex

SEER Incidence

RACE/ETHNICITY	Rate 2000-2004 <sup>b</sup>			Trend 1995-2004 <sup>c</sup>		
	Rate per 100,000 persons			APC (%)		
	Total	Males	Females	Total	Males	Females
All Races	51.6	60.8	44.6	-1.5*	-1.8*	-1.3*
White	51.2	60.4	44.0	-1.6*	-2.0*	-1.4*
White Hispanic <sup>d</sup>	39.9	48.4	33.3	-1.0	-1.4*	-0.8
White Non-Hispanic <sup>d</sup>	52.0	61.2	44.7	-1.5*	-1.9*	-1.4*
Black	62.1	72.6	55.0	-0.4	-0.2	-0.6
Asian/Pacific Islander	41.6	49.7	35.3	-1.2*	-1.6*	-0.7
Amer Ind/Alaska Nat <sup>e</sup>	40.8	42.1	39.6	-0.5	-2.2	1.4
Hispanic <sup>d</sup>	39.3	47.5	32.9	-0.9	-1.2	-0.7

U.S. Mortality<sup>f</sup>

RACE/ETHNICITY	Rate 2000-2004			Trend 1995-2004		
	Rate per 100,000 persons			APC (%)		
	Total	Males	Females	Total	Males	Females
All Races	19.4	23.5	16.4	-2.2*	-2.4*	-2.2*
White	18.9	22.9	15.9	-2.3*	-2.4*	-2.3*
White Hispanic <sup>d</sup>	14.1	17.6	11.4	-0.9*	-1.4*	-0.6
White Non-Hispanic <sup>d</sup>	19.2	23.3	16.2	-2.2*	-2.4*	-2.3*
Black	26.7	32.7	22.9	-1.5*	-1.5*	-1.7*
Asian/Pacific Islander	12.3	15.0	10.3	-2.0*	-1.9*	-1.9*
Amer Ind/Alaska Nat						
Total U.S.	13.0	15.9	10.8	-2.6*	-1.9	-3.6*
CHSDA Counties	17.0	20.6	14.3	-1.4	-0.2	-2.4
Non-CHSDA Counties	7.8	9.8	6.1	-4.6*	-4.9	-5.2*
Hispanic <sup>d</sup>	13.6	17.0	11.1	-0.9*	-1.4*	-0.6

- The APC is the Annual Percent Change over the time interval.
- Statistic not shown. Rate based on less than 16 cases for the time interval. Trend based on less than 10 cases for at least one year within the time interval.
- a Rates are age-adjusted to the 2000 US Std Population (19 age groups - Census P25-1130). Trends are based on rates age-adjusted to the 2000 US Std Population (19 age groups - Census P25-1130).
- b Incidence data used in calculating the rates are from the 17 SEER areas (San Francisco, Connecticut, Detroit, Hawaii, Iowa, New Mexico, Seattle, Utah, Atlanta, San Jose-Monterey, Los Angeles, Alaska Native Registry, Rural Georgia, California excluding SF/SJM/LA, Kentucky, Louisiana and New Jersey).
- c Incidence data used in calculating the trends are from the 13 SEER areas (San Francisco, Connecticut, Detroit, Hawaii, Iowa, New Mexico, Seattle, Utah, Atlanta, San Jose-Monterey, Los Angeles, Alaska Native Registry and Rural Georgia).
- d Hispanic and Non-Hispanic are not mutually exclusive from whites, blacks, Asian/Pacific Islanders, and American Indians/Alaska Natives. Incidence data for Hispanics and Non-Hispanics are based on NHIA and exclude cases from the Alaska Native Registry and Kentucky. The 2000-2004 Hispanic and Non-Hispanic death rates exclude deaths from Minnesota, New Hampshire and North Dakota. The 1995-2004 Hispanic and Non-Hispanic mortality trends exclude deaths from Maine, Minnesota, New Hampshire, North Dakota, and Oklahoma.
- e Incidence data for American Indian/Alaska Native are based on the CHSDA(Contract Health Service Delivery Area) counties.
- f Mortality data are analyzed from a public use file provided by the National Center for Health Statistics (NCHS).
- \* The APC is significantly different from zero (p<.05).

Table VI-17  
COLON CANCER (Invasive) and RECTUM CANCER (Invasive)

SEER INCIDENCE  
AGE-ADJUSTED RATES AND TRENDS<sup>a</sup>  
 By Race/Ethnicity and Sex

Colon Incidence

RACE/ETHNICITY	Rate 2000-2004 <sup>b</sup>			Trend 1995-2004 <sup>c</sup>		
	Rate per 100,000 persons			APC (%)		
	Total	Males	Females	Total	Males	Females
All Races	37.4	42.5	33.5	-1.4*	-1.7*	-1.3*
White	37.0	42.2	33.0	-1.5*	-1.9*	-1.3*
White Hispanic <sup>d</sup>	27.6	32.1	24.2	-0.7	-0.9	-0.7
White Non-Hispanic <sup>d</sup>	37.7	42.9	33.6	-1.5*	-1.9*	-1.3*
Black	47.8	54.9	43.1	-0.4	-0.1	-0.8
Asian/Pacific Islander	28.1	32.3	24.9	-1.2	-1.3	-1.1
Amer Ind/Alaska Nat <sup>e</sup>	29.2	27.3	30.6	-0.1	-2.8	2.2
Hispanic <sup>d</sup>	27.2	31.6	23.9	-0.7	-0.8	-0.7

Rectum Incidence

RACE/ETHNICITY	Rate 2000-2004 <sup>b</sup>			Trend 1995-2004 <sup>c</sup>		
	Rate per 100,000 persons			APC (%)		
	Total	Males	Females	Total	Males	Females
All Races	14.3	18.3	11.1	-1.6*	-1.9*	-1.3
White	14.2	18.3	11.0	-1.8*	-2.0*	-1.7*
White Hispanic <sup>d</sup>	12.2	16.2	9.1	-1.6*	-2.4*	-1.0
White Non-Hispanic <sup>d</sup>	14.3	18.3	11.1	-1.7*	-1.9*	-1.6*
Black	14.3	17.6	11.9	-0.6	-0.7	-0.2
Asian/Pacific Islander	13.5	17.5	10.4	-1.3	-2.4*	0.3
Amer Ind/Alaska Nat <sup>e</sup>	11.6	14.8	9.0	-1.5	-	-
Hispanic <sup>d</sup>	12.1	16.0	9.0	-1.4	-2.2*	-0.7

- The APC is the Annual Percent Change over the time interval.
- Statistic not shown. Rate based on less than 16 cases for the time interval. Trend based on less than 10 cases for at least one year within the time interval.
- <sup>a</sup> Rates are age-adjusted to the 2000 US Std Population (19 age groups - Census P25-1130). Trends are based on rates age-adjusted to the 2000 US Std Population (19 age groups - Census P25-1130).
- <sup>b</sup> Incidence data used in calculating the rates are from the 17 SEER areas (San Francisco, Connecticut, Detroit, Hawaii, Iowa, New Mexico, Seattle, Utah, Atlanta, San Jose-Monterey, Los Angeles, Alaska Native Registry, Rural Georgia, California excluding SF/SJM/LA, Kentucky, Louisiana and New Jersey).
- <sup>c</sup> Incidence data used in calculating the trends are from the 13 SEER areas (San Francisco, Connecticut, Detroit, Hawaii, Iowa, New Mexico, Seattle, Utah, Atlanta, San Jose-Monterey, Los Angeles, Alaska Native Registry and Rural Georgia).
- <sup>d</sup> Hispanic and Non-Hispanic are not mutually exclusive from whites, blacks, Asian/Pacific Islanders, and American Indians/Alaska Natives. Incidence data for Hispanics and Non-Hispanics are based on NHIA and exclude cases from the Alaska Native Registry and Kentucky.
- <sup>e</sup> Incidence data for American Indian/Alaska Native are based on the CHSDA (Contract Health Service Delivery Area) counties.
- \* The APC is significantly different from zero (p<.05).

Table VI-18  
COLON AND RECTUM CANCER (Invasive)

AGE-ADJUSTED SEER INCIDENCE RATES<sup>a</sup>  
By Registry, Race and Sex

	All Races			Whites			Blacks		
	Total	Males	Females	Total	Males	Females	Total	Males	Females
<u>SEER INCIDENCE RATES<sup>a</sup>, 2000-2004</u>									
REGISTRY									
Atlanta & Rural Georgia	49.2	57.9	43.2	45.1	53.3	39.0	61.7	74.3	54.6
Atlanta	49.0	57.1	43.4	45.0	52.8	39.2	61.7	73.5	55.2
Rural Georgia	54.5	71.6	42.2	47.1	61.1	37.5	67.6	93.3	49.9
California	46.8	55.0	40.4	46.7	55.1	40.1	56.3	63.9	50.7
Greater Bay Area	46.4	54.0	40.4	46.6	54.2	40.6	50.3	59.0	44.1
San Francisco-Oakland	47.5	55.5	41.2	47.3	55.5	40.8	50.9	59.4	45.0
San Jose-Monterey	44.0	50.8	38.6	45.3	51.7	40.1	46.4	58.5	37.0
Los Angeles	48.0	56.1	41.7	46.7	54.9	40.3	61.0	69.6	55.1
Greater California	46.4	54.8	39.7	46.8	55.5	39.9	53.9	59.9	49.0
Connecticut	56.7	66.9	49.0	56.4	66.8	48.5	58.5	67.1	52.8
Detroit	55.6	65.8	48.4	52.7	62.3	45.5	68.6	81.9	60.0
Hawaii	52.0	64.7	41.6	51.1	60.9	42.6	43.3	60.0	-
Iowa	59.3	69.0	51.5	59.1	68.8	51.4	63.8	82.2	50.9
Kentucky	60.4	71.3	52.8	59.7	70.7	51.8	73.3	82.1	67.6
Louisiana	58.4	71.3	48.9	56.4	69.8	46.2	65.5	77.5	57.5
New Jersey	59.0	70.1	50.8	58.8	70.1	50.3	63.4	76.7	55.1
New Mexico	42.9	51.5	35.7	44.0	52.8	36.5	38.6	41.5	34.9
Seattle-Puget Sound	48.3	55.2	42.6	48.6	55.7	42.6	55.0	58.4	52.1
Utah	40.8	47.5	35.2	41.0	47.8	35.5	56.6	-	-
9 SEER Areas <sup>b</sup>	51.5	60.2	44.6	50.9	59.6	44.0	61.5	72.4	54.5
11 SEER Areas <sup>b</sup>	50.3	58.8	43.6	49.7	58.1	43.0	61.2	71.4	54.5
13 SEER Areas <sup>b</sup>	50.3	58.9	43.7	49.7	58.1	43.0	61.3	71.7	54.4
17 SEER Areas <sup>b</sup>	51.6	60.8	44.6	51.2	60.4	44.0	62.1	72.6	55.0

<sup>a</sup> Rates are per 100,000 and are age-adjusted to the 2000 US Std Population (19 age groups - Census P25-1130)

<sup>b</sup> The SEER 9 areas are San Francisco, Connecticut, Detroit, Hawaii, Iowa, New Mexico, Seattle, Utah and Atlanta.

The SEER 11 areas comprise the SEER 9 areas plus San Jose-Monterey and Los Angeles.

The SEER 13 areas comprise the SEER 11 areas plus the Alaska Native Registry and Rural Georgia.

The SEER 17 areas comprise the SEER 13 areas plus California excluding SF/SJM/LA, Kentucky, Louisiana and New Jersey

- Statistic not shown. Rate based on less than 16 cases for the time interval.

Table VI-19  
COLON AND RECTUM CANCER (Invasive)

AGE-ADJUSTED SEER DEATH RATES<sup>a</sup>  
By Registry, Race and Sex

	All Races			Whites			Blacks		
	Total	Males	Females	Total	Males	Females	Total	Males	Females
<u>SEER DEATH RATES<sup>a</sup>, 2000-2004</u>									
REGISTRY									
Atlanta & Rural Georgia	17.9	21.3	15.8	14.8	18.1	12.6	26.9	31.8	24.3
Atlanta	17.7	21.0	15.7	14.8	18.0	12.7	26.6	31.4	24.1
Rural Georgia	21.1	27.2	16.9	15.3	21.1	10.6	32.2	38.4	28.3
California	17.0	20.2	14.7	17.0	20.2	14.5	26.0	29.9	23.3
Greater Bay Area	16.2	19.1	14.0	16.4	19.3	14.2	23.2	27.8	20.1
San Francisco-Oakland	17.2	20.2	14.9	17.2	20.1	15.0	23.0	26.9	20.4
San Jose-Monterey	14.2	17.0	12.0	14.9	17.7	12.7	26.9	35.9	18.9
Los Angeles	17.4	20.6	15.0	16.8	20.0	14.5	27.5	32.8	24.1
Greater California	17.2	20.3	14.7	17.3	20.6	14.7	26.0	27.5	24.7
Connecticut	18.6	22.3	15.9	18.4	22.3	15.6	23.3	26.8	21.3
Detroit	19.5	23.8	16.6	18.1	22.1	15.3	26.0	31.9	22.3
Hawaii	16.0	21.0	12.0	16.3	20.3	12.6	-	-	-
Iowa	20.3	24.5	17.2	20.3	24.5	17.3	24.7	38.7	-
Kentucky	22.8	27.7	19.5	22.3	27.3	18.9	32.3	35.6	30.7
Louisiana	23.1	29.2	18.8	20.9	26.9	16.7	30.2	37.7	25.3
New Jersey	21.5	25.9	18.3	21.3	25.7	18.2	26.1	31.7	22.4
New Mexico	17.3	21.5	13.8	17.6	21.7	14.2	20.6	29.4	-
Seattle-Puget Sound	16.8	19.3	14.7	16.8	19.5	14.5	23.1	21.8	23.5
Utah	14.6	17.1	12.7	14.6	17.1	12.7	-	-	-
9 SEER Areas <sup>b</sup>	17.9	21.5	15.3	17.6	21.1	15.0	24.9	29.7	22.0
11 SEER Areas <sup>b</sup>	17.6	21.0	15.1	17.3	20.7	14.8	25.7	30.6	22.5
13 SEER Areas <sup>b</sup>	17.6	21.1	15.1	17.3	20.7	14.8	25.7	30.6	22.6
17 SEER Areas <sup>b</sup>	18.7	22.3	15.9	18.4	22.0	15.6	26.9	32.0	23.6
Total U.S.	19.4	23.5	16.4	18.9	22.9	15.9	26.7	32.7	22.9

<sup>a</sup> NCHS public use data file for the total US. Rates are per 100,000 and are age-adjusted to the 2000 US Std Population (19 age groups - Census P25-1130).

<sup>b</sup> The SEER 9 areas are San Francisco, Connecticut, Detroit, Hawaii, Iowa, New Mexico, Seattle, Utah and Atlanta.

The SEER 11 areas comprise the SEER 9 areas plus San Jose-Monterey and Los Angeles.

The SEER 13 areas comprise the SEER 11 areas plus the Alaska Native Registry and Rural Georgia.

The SEER 17 areas comprise the SEER 13 areas plus California excluding SF/SJM/LA, Kentucky, Louisiana and New Jersey

- Statistic not shown. Rate based on less than 16 cases for the time interval.



Table VI-20  
COLON AND RECTUM CANCER (Invasive)AVERAGE ANNUAL AGE-ADJUSTED CANCER DEATH<sup>a</sup> RATES BY STATE, ALL RACES, 2000-2004

Males and Females

State	Rate	SE	Rank	PD	State	Rate	SE	Rank	PD
TOTAL U.S.	19.4	0.04							
High Five States									
District of Columbia	23.8 <sup>b</sup>	0.93	(01)	22.7 <sup>c</sup>					
Louisiana	23.1 <sup>b</sup>	0.33	(02)	19.1 <sup>c</sup>					
West Virginia	22.9 <sup>b</sup>	0.46	(03)	18.0 <sup>c</sup>					
Kentucky	22.8 <sup>b</sup>	0.34	(04)	17.5 <sup>c</sup>					
Mississippi	22.1 <sup>b</sup>	0.40	(05)	13.9 <sup>c</sup>					
Low Five States									
California	17.0 <sup>b</sup>	0.11	(47)	-12.4 <sup>c</sup>					
Arizona	16.9 <sup>b</sup>	0.25	(48)	-12.9 <sup>c</sup>					
Hawaii	16.0 <sup>b</sup>	0.49	(49)	-17.5 <sup>c</sup>					
Idaho	15.7 <sup>b</sup>	0.50	(50)	-19.1 <sup>c</sup>					
Utah	14.6 <sup>b</sup>	0.42	(51)	-24.7 <sup>c</sup>					
Alabama	19.1	0.29	(32)	-1.5	Montana	17.4	0.59	(45)	-10.3 <sup>c</sup>
Alaska	19.3	1.14	(30)	-0.5	Nebraska	20.4	0.47	(17)	5.2
Arizona	16.9 <sup>b</sup>	0.25	(48)	-12.9 <sup>c</sup>	Nevada	21.7 <sup>b</sup>	0.49	(06)	11.9 <sup>c</sup>
Arkansas	21.2 <sup>b</sup>	0.38	(12)	9.3	New Hampshire	19.6	0.56	(28)	1.0
California	17.0 <sup>b</sup>	0.11	(47)	-12.4 <sup>c</sup>	New Jersey	21.5 <sup>b</sup>	0.22	(08)	10.8 <sup>c</sup>
Colorado	17.4 <sup>b</sup>	0.31	(44)	-10.3 <sup>c</sup>	New Mexico	17.3 <sup>b</sup>	0.44	(46)	-10.8 <sup>c</sup>
Connecticut	18.6	0.31	(38)	-4.1	New York	20.1 <sup>b</sup>	0.14	(22)	3.6
Delaware	20.0	0.69	(25)	3.1	North Carolina	19.0	0.22	(33)	-2.1
District of Columbia	23.8 <sup>b</sup>	0.93	(01)	22.7 <sup>c</sup>	North Dakota	18.8	0.71	(36)	-3.1
Florida	17.6 <sup>b</sup>	0.13	(42)	-9.3	Ohio	21.2 <sup>b</sup>	0.19	(10)	9.3
Georgia	19.1	0.24	(31)	-1.5	Oklahoma	20.2	0.33	(19)	4.1
Hawaii	16.0 <sup>b</sup>	0.49	(49)	-17.5 <sup>c</sup>	Oregon	17.8 <sup>b</sup>	0.31	(40)	-8.2
Idaho	15.7 <sup>b</sup>	0.50	(50)	-19.1 <sup>c</sup>	Pennsylvania	21.3 <sup>b</sup>	0.17	(09)	9.8
Illinois	21.6 <sup>b</sup>	0.19	(07)	11.3 <sup>c</sup>	Rhode Island	20.0	0.57	(23)	3.1
Indiana	21.2 <sup>b</sup>	0.26	(11)	9.3	South Carolina	20.0	0.32	(24)	3.1
Iowa	20.3	0.34	(18)	4.6	South Dakota	20.2	0.68	(20)	4.1
Kansas	19.0	0.36	(34)	-2.1	Tennessee	20.8 <sup>b</sup>	0.27	(14)	7.2
Kentucky	22.8 <sup>b</sup>	0.34	(04)	17.5 <sup>c</sup>	Texas	18.6 <sup>b</sup>	0.15	(39)	-4.1
Louisiana	23.1 <sup>b</sup>	0.33	(02)	19.1 <sup>c</sup>	Utah	14.6 <sup>b</sup>	0.42	(51)	-24.7 <sup>c</sup>
Maine	20.5	0.52	(16)	5.7	Vermont	19.8	0.78	(26)	2.1
Maryland	20.9 <sup>b</sup>	0.29	(13)	7.7	Virginia	19.8	0.24	(27)	2.1
Massachusetts	20.1	0.24	(21)	3.6	Washington	17.4 <sup>b</sup>	0.25	(43)	-10.3 <sup>c</sup>
Michigan	19.0	0.19	(35)	-2.1	West Virginia	22.9 <sup>b</sup>	0.46	(03)	18.0 <sup>c</sup>
Minnesota	17.7 <sup>b</sup>	0.27	(41)	-8.8	Wisconsin	18.8	0.25	(37)	-3.1
Mississippi	22.1 <sup>b</sup>	0.40	(05)	13.9 <sup>c</sup>	Wyoming	19.6	0.90	(29)	1.0
Missouri	20.7 <sup>b</sup>	0.26	(15)	6.7					

<sup>a</sup> NCHS public use data file. Rates are per 100,000 and are age-adjusted to the 2000 US Std Population (19 age groups - Census P25-1130).

<sup>b</sup> Difference between state rate and total U.S. rate is statistically significant ( $p < .0002$ ).

<sup>c</sup> Absolute percent difference between state rate and total U.S. rate is 10% or more.

SE Standard error of the rate.

PD Percent difference between state rate and total U.S. rate.

Table VI-21  
COLON AND RECTUM CANCER (Invasive)

AVERAGE ANNUAL AGE-ADJUSTED CANCER DEATH<sup>a</sup> RATES BY STATE, ALL RACES, 2000-2004

Males

State	Rate	SE	Rank	PD	State	Rate	SE	Rank	PD
TOTAL U.S.	23.5	0.06							
High Five States									
District of Columbia	29.3	1.67	(01)	24.7 <sup>c</sup>					
Louisiana	29.2 <sup>b</sup>	0.60	(02)	24.3 <sup>c</sup>					
Kentucky	27.7 <sup>b</sup>	0.60	(03)	17.9 <sup>c</sup>					
West Virginia	27.5 <sup>b</sup>	0.80	(04)	17.0 <sup>c</sup>					
Mississippi	26.9 <sup>b</sup>	0.71	(05)	14.5 <sup>c</sup>					
Low Five States									
Arizona	20.4 <sup>b</sup>	0.42	(47)	-13.2 <sup>c</sup>					
Washington	20.3 <sup>b</sup>	0.41	(48)	-13.6 <sup>c</sup>					
California	20.2 <sup>b</sup>	0.18	(49)	-14.0 <sup>c</sup>					
Idaho	18.9 <sup>b</sup>	0.84	(50)	-19.6 <sup>c</sup>					
Utah	17.1 <sup>b</sup>	0.71	(51)	-27.2 <sup>c</sup>					
Alabama	24.4	0.53	(22)	3.8	Montana	21.6	1.01	(39)	-8.1
Alaska	23.4	2.00	(27)	-0.4	Nebraska	24.4	0.80	(23)	3.8
Arizona	20.4 <sup>b</sup>	0.42	(47)	-13.2 <sup>c</sup>	Nevada	26.3	0.83	(08)	11.9 <sup>c</sup>
Arkansas	26.1 <sup>b</sup>	0.66	(09)	11.1 <sup>c</sup>	New Hampshire	24.2	0.98	(24)	3.0
California	20.2 <sup>b</sup>	0.18	(49)	-14.0 <sup>c</sup>	New Jersey	25.9 <sup>b</sup>	0.38	(11)	10.2 <sup>c</sup>
Colorado	20.7 <sup>b</sup>	0.53	(45)	-11.9 <sup>c</sup>	New Mexico	21.5	0.76	(40)	-8.5
Connecticut	22.3	0.54	(38)	-5.1	New York	24.4 <sup>b</sup>	0.25	(21)	3.8
Delaware	24.5	1.21	(19)	4.3	North Carolina	23.0	0.39	(33)	-2.1
District of Columbia	29.3	1.67	(01)	24.7 <sup>c</sup>	North Dakota	22.4	1.19	(37)	-4.7
Florida	21.2 <sup>b</sup>	0.21	(42)	-9.8	Ohio	25.7 <sup>b</sup>	0.33	(13)	9.4
Georgia	23.3	0.43	(29)	-0.9	Oklahoma	25.2	0.59	(14)	7.2
Hawaii	21.0	0.84	(43)	-10.6 <sup>c</sup>	Oregon	21.4 <sup>b</sup>	0.52	(41)	-8.9
Idaho	18.9 <sup>b</sup>	0.84	(50)	-19.6 <sup>c</sup>	Pennsylvania	26.0 <sup>b</sup>	0.29	(10)	10.6 <sup>c</sup>
Illinois	26.8 <sup>b</sup>	0.33	(06)	14.0 <sup>c</sup>	Rhode Island	23.3	0.98	(30)	-0.9
Indiana	26.4 <sup>b</sup>	0.47	(07)	12.3 <sup>c</sup>	South Carolina	24.4	0.56	(20)	3.8
Iowa	24.5	0.59	(18)	4.3	South Dakota	24.1	1.15	(25)	2.6
Kansas	22.5	0.62	(36)	-4.3	Tennessee	25.7 <sup>b</sup>	0.48	(12)	9.4
Kentucky	27.7 <sup>b</sup>	0.60	(03)	17.9 <sup>c</sup>	Texas	22.6 <sup>b</sup>	0.25	(35)	-3.8
Louisiana	29.2 <sup>b</sup>	0.60	(02)	24.3 <sup>c</sup>	Utah	17.1 <sup>b</sup>	0.71	(51)	-27.2 <sup>c</sup>
Maine	23.4	0.88	(28)	-0.4	Vermont	22.9	1.32	(34)	-2.6
Maryland	25.1	0.50	(16)	6.8	Virginia	23.9	0.43	(26)	1.7
Massachusetts	24.6	0.42	(17)	4.7	Washington	20.3 <sup>b</sup>	0.41	(48)	-13.6 <sup>c</sup>
Michigan	23.0	0.34	(32)	-2.1	West Virginia	27.5 <sup>b</sup>	0.80	(04)	17.0 <sup>c</sup>
Minnesota	20.6 <sup>b</sup>	0.45	(46)	-12.3 <sup>c</sup>	Wisconsin	23.0	0.44	(31)	-2.1
Mississippi	26.9 <sup>b</sup>	0.71	(05)	14.5 <sup>c</sup>	Wyoming	20.7	1.43	(44)	-11.9 <sup>c</sup>
Missouri	25.2 <sup>b</sup>	0.46	(15)	7.2					

<sup>a</sup> NCHS public use data file. Rates are per 100,000 and are age-adjusted to the 2000 US Std Population (19 age groups - Census P25-1130).

<sup>b</sup> Difference between state rate and total U.S. rate is statistically significant ( $p < .0002$ ).

<sup>c</sup> Absolute percent difference between state rate and total U.S. rate is 10% or more.

SE Standard error of the rate.

PD Percent difference between state rate and total U.S. rate.

Table VI-22  
COLON AND RECTUM CANCER (Invasive)

AVERAGE ANNUAL AGE-ADJUSTED CANCER DEATH<sup>a</sup> RATES BY STATE, ALL RACES, 2000-2004

Females

State	Rate	SE	Rank	PD	State	Rate	SE	Rank	PD
TOTAL U.S.	16.4	0.04							
High Five States									
District of Columbia	20.4 <sup>b</sup>	1.10	(01)	24.4 <sup>c</sup>					
West Virginia	19.6 <sup>b</sup>	0.56	(02)	19.5 <sup>c</sup>					
Kentucky	19.5 <sup>b</sup>	0.40	(03)	18.9 <sup>c</sup>					
Louisiana	18.8 <sup>b</sup>	0.39	(04)	14.6 <sup>c</sup>					
Mississippi	18.7 <sup>b</sup>	0.48	(05)	14.0 <sup>c</sup>					
Low Five States									
Arizona	14.1 <sup>b</sup>	0.30	(47)	-14.0 <sup>c</sup>					
New Mexico	13.8 <sup>b</sup>	0.53	(48)	-15.9 <sup>c</sup>					
Idaho	13.2 <sup>b</sup>	0.61	(49)	-19.5 <sup>c</sup>					
Utah	12.7 <sup>b</sup>	0.53	(50)	-22.6 <sup>c</sup>					
Hawaii	12.0 <sup>b</sup>	0.57	(51)	-26.8 <sup>c</sup>					
Alabama	15.4	0.34	(40)	-6.1	Montana	14.1	0.71	(46)	-14.0 <sup>c</sup>
Alaska	16.2	1.40	(32)	-1.2	Nebraska	17.5	0.57	(17)	6.7
Arizona	14.1 <sup>b</sup>	0.30	(47)	-14.0 <sup>c</sup>	Nevada	18.0	0.60	(11)	9.8
Arkansas	17.6	0.46	(15)	7.3	New Hampshire	16.4	0.67	(30)	0.0
California	14.7 <sup>b</sup>	0.13	(45)	-10.4 <sup>c</sup>	New Jersey	18.3 <sup>b</sup>	0.26	(07)	11.6 <sup>c</sup>
Colorado	14.9 <sup>b</sup>	0.38	(43)	-9.1	New Mexico	13.8 <sup>b</sup>	0.53	(48)	-15.9 <sup>c</sup>
Connecticut	15.9	0.38	(36)	-3.0	New York	17.1 <sup>b</sup>	0.17	(23)	4.3
Delaware	16.8	0.84	(25)	2.4	North Carolina	16.3	0.26	(31)	-0.6
District of Columbia	20.4 <sup>b</sup>	1.10	(01)	24.4 <sup>c</sup>	North Dakota	16.0	0.87	(34)	-2.4
Florida	14.7 <sup>b</sup>	0.16	(44)	-10.4 <sup>c</sup>	Ohio	18.0 <sup>b</sup>	0.22	(10)	9.8
Georgia	16.4	0.28	(29)	0.0	Oklahoma	16.6	0.40	(28)	1.2
Hawaii	12.0 <sup>b</sup>	0.57	(51)	-26.8 <sup>c</sup>	Oregon	15.0 <sup>b</sup>	0.38	(42)	-8.5
Idaho	13.2 <sup>b</sup>	0.61	(49)	-19.5 <sup>c</sup>	Pennsylvania	17.9 <sup>b</sup>	0.20	(13)	9.1
Illinois	18.1 <sup>b</sup>	0.22	(09)	10.4 <sup>c</sup>	Rhode Island	17.9	0.71	(12)	9.1
Indiana	17.4	0.31	(18)	6.1	South Carolina	16.7	0.38	(26)	1.8
Iowa	17.2	0.41	(22)	4.9	South Dakota	17.3	0.84	(21)	5.5
Kansas	16.1	0.44	(33)	-1.8	Tennessee	17.4	0.32	(19)	6.1
Kentucky	19.5 <sup>b</sup>	0.40	(03)	18.9 <sup>c</sup>	Texas	15.4 <sup>b</sup>	0.17	(39)	-6.1
Louisiana	18.8 <sup>b</sup>	0.39	(04)	14.6 <sup>c</sup>	Utah	12.7 <sup>b</sup>	0.53	(50)	-22.6 <sup>c</sup>
Maine	18.2	0.64	(08)	11.0 <sup>c</sup>	Vermont	17.6	0.97	(16)	7.3
Maryland	17.8 <sup>b</sup>	0.34	(14)	8.5	Virginia	16.7	0.29	(27)	1.8
Massachusetts	17.0	0.29	(24)	3.7	Washington	15.1 <sup>b</sup>	0.31	(41)	-7.9
Michigan	16.0	0.23	(35)	-2.4	West Virginia	19.6 <sup>b</sup>	0.56	(02)	19.5 <sup>c</sup>
Minnesota	15.6	0.33	(37)	-4.9	Wisconsin	15.6	0.30	(38)	-4.9
Mississippi	18.7 <sup>b</sup>	0.48	(05)	14.0 <sup>c</sup>	Wyoming	18.5	1.17	(06)	12.8 <sup>c</sup>
Missouri	17.3	0.31	(20)	5.5					

<sup>a</sup> NCHS public use data file. Rates are per 100,000 and are age-adjusted to the 2000 US Std Population (19 age groups - Census P25-1130).

<sup>b</sup> Difference between state rate and total U.S. rate is statistically significant ( $p < .0002$ ).

<sup>c</sup> Absolute percent difference between state rate and total U.S. rate is 10% or more.

SE Standard error of the rate.

PD Percent difference between state rate and total U.S. rate.

Table VI-23  
COLON AND RECTUM CANCER (Invasive)

Estimated United States Cancer Prevalence Counts<sup>a</sup> on January 1, 2004  
By Race/Ethnicity, Sex and Years Since Diagnosis

Years Since Diagnosis	0 to <5	5 to <10	10 to <15	15 to <20	20 to <25	0 to <14 <sup>e</sup>	0 to <29 <sup>e</sup>	>=29 <sup>g</sup>	Complete <sup>h</sup>
<b>Race/Sex</b>									
All Races <sup>b</sup>	413,172	245,282	166,300	110,399	61,991	796,433	1,026,682	49,653	1,076,335
Males	208,481	120,903	81,877	53,796	26,796	397,719	503,545	18,131	521,676
Females	204,691	124,379	84,423	56,603	35,195	398,714	523,137	31,522	554,659
White <sup>b</sup>	354,407	214,315	146,951	98,437	55,723	690,690	896,513	44,382	940,895
Males	180,121	106,272	72,849	48,403	24,252	347,063	442,470	16,341	458,811
Females	174,286	108,043	74,102	50,034	31,471	343,627	454,043	28,041	482,084
Black <sup>b</sup>	40,623	21,272	13,602	8,557	4,435	73,035	90,401	3,421	93,822
Males	18,483	9,395	6,019	3,564	1,599	32,992	39,740	1,159	40,899
Females	22,140	11,877	7,583	4,993	2,836	40,043	50,661	2,262	52,923
Asian/Pacific Islander <sup>c</sup>	12,676	6,902	+	+	+	22,945	+	+	+
Males	6,655	3,687	+	+	+	12,057	+	+	+
Females	6,021	3,215	+	+	+	10,888	+	+	+
Hispanic <sup>d</sup>	19,880	10,031	+	+	+	35,328	+	+	+
Males	10,684	5,381	+	+	+	18,809	+	+	+
Females	9,196	4,650	+	+	+	16,519	+	+	+

Estimated prevalence percent<sup>a</sup> on January 1, 2004, of the SEER 11 population diagnosed in the previous 10 years  
By Age at Prevalence, Race/Ethnicity and Sex

Age at Prevalence	Age Specific (Crude)										Age-Adjusted <sup>f</sup>
	All Ages	0-9	10-19	20-29	30-39	40-49	50-59	60-69	70-79	80+	All Ages
<b>Race/Sex</b>											
All Races <sup>c</sup>	0.2012%	-	0.0002%	0.0035%	0.0201%	0.0736%	0.2526%	0.6378%	1.2236%	1.6114%	0.2156%
Males	0.2045%	-	0.0002%	0.0037%	0.0209%	0.0765%	0.2884%	0.7661%	1.4730%	1.8018%	0.2514%
Females	0.1979%	-	0.0003%	0.0033%	0.0193%	0.0706%	0.2187%	0.5230%	1.0354%	1.5071%	0.1876%
White <sup>c</sup>	0.2121%	-	0.0003%	0.0036%	0.0196%	0.0709%	0.2414%	0.6307%	1.2394%	1.6405%	0.2152%
Males	0.2143%	-	0.0003%	0.0037%	0.0201%	0.0732%	0.2780%	0.7605%	1.4851%	1.8358%	0.2509%
Females	0.2098%	-	0.0003%	0.0034%	0.0190%	0.0684%	0.2057%	0.5116%	1.0500%	1.5350%	0.1866%
Black <sup>c</sup>	0.1583%	-	-	0.0030%	0.0197%	0.0872%	0.3209%	0.7625%	1.2256%	1.3858%	0.2279%
Males	0.1524%	-	-	0.0032%	0.0194%	0.0927%	0.3664%	0.8529%	1.3561%	1.4399%	0.2511%
Females	0.1636%	-	-	0.0029%	0.0199%	0.0824%	0.2833%	0.6918%	1.1401%	1.3597%	0.2113%
Asian/Pacific Islander <sup>c</sup>	0.1777%	-	-	0.0036%	0.0215%	0.0747%	0.2569%	0.5774%	1.0972%	1.4880%	0.2009%
Males	0.1924%	-	-	0.0048%	0.0242%	0.0795%	0.2781%	0.7198%	1.4367%	1.7137%	0.2433%
Females	0.1640%	-	-	0.0024%	0.0190%	0.0704%	0.2384%	0.4580%	0.8537%	1.3379%	0.1692%
Hispanic <sup>d</sup>	0.0724%	-	-	0.0029%	0.0155%	0.0535%	0.1767%	0.4627%	0.8854%	1.0642%	0.1533%
Males	0.0746%	-	-	0.0033%	0.0155%	0.0501%	0.2039%	0.5792%	1.1795%	1.2354%	0.1877%
Females	0.0701%	-	-	0.0024%	0.0156%	0.0570%	0.1513%	0.3658%	0.6752%	0.9663%	0.1278%

<sup>a</sup> US 2004 cancer prevalence counts are based on 2004 cancer prevalence proportions from the SEER registries and 1/1/2004 US population estimates based on the average of 2003 and 2004 population estimates from the US Bureau of the Census. Prevalence was calculated using the First Malignant Primary Only for a person.

<sup>b c d</sup> Statistics based on (b) SEER 9 Areas (c) SEER 11 Areas and Rural Georgia (d) NHIA for Hispanic for SEER 11 Areas and Rural Georgia.

<sup>e</sup> Maximum limited-duration prevalence: 29 years for 1975-2004 SEER 9 data; 14 years for 1990-2004 SEER 11 data (used to calculate prevalence for Hispanics and Asian Pacific Islanders).

<sup>f</sup> Percentages are age-adjusted to the 2000 US Standard Population (19 age groups - Census P25-1130) by 5-year age groups.

<sup>g h</sup> (g) Cases diagnosed more than 29 years ago were estimated using the completeness index method (Capocaccia et. al. 1997, Merrill et. al. 2000). (h) Complete prevalence is obtained by summing 0 to <29 and >=29.

- Statistic not shown. Statistic based on fewer than 5 cases estimated alive in SEER for the time interval.

+ Not available.

# SEER Incidence, Delay Adjusted Incidence and US Death Rates<sup>a</sup> Colon and Rectum Cancer, by Race and Sex

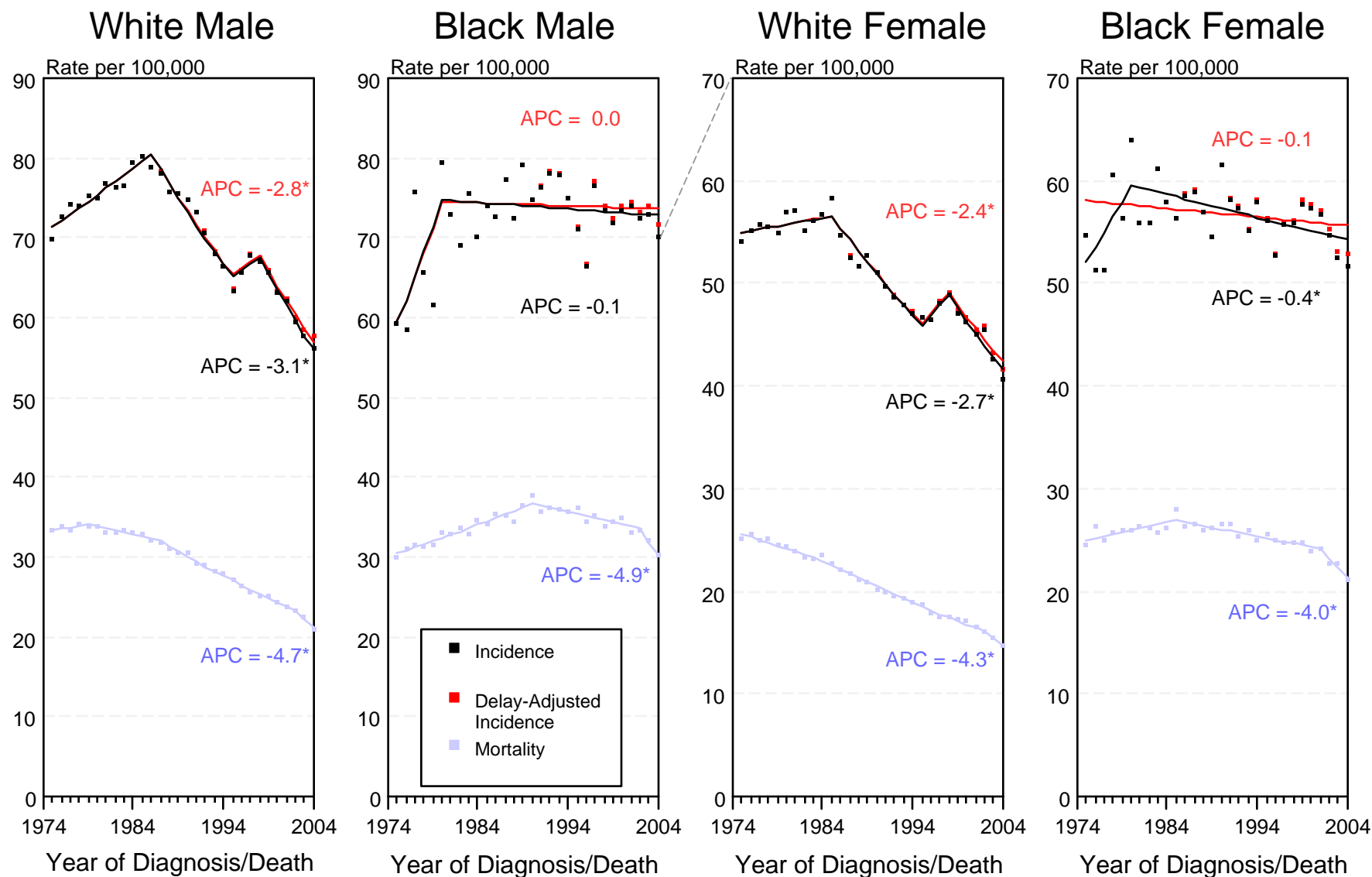


Figure VI-1

<sup>a</sup> Source: SEER 9 areas and NCHS public use data file for the total US. Rates are age-adjusted to the 2000 US Std Population (19 age groups - Census P25-1103). Regression lines and APCs are calculated using the Joinpoint Regression Program Version 3.0, April 2005, National Cancer Institute.

The APC is the Annual Percent Change for the regression line segments. The APC shown on the graph is for the most recent trend.

\* The APC is significantly different from zero ( $p < 0.05$ ).

# SEER Incidence and US Death Rates<sup>a</sup> Colon and Rectum Cancer, Both Sexes

Joinpoint Analyses for Whites and Blacks from 1975-2004  
and for Asian/Pacific Islanders, American Indians/Alaska Natives and Hispanics from 1992-2004

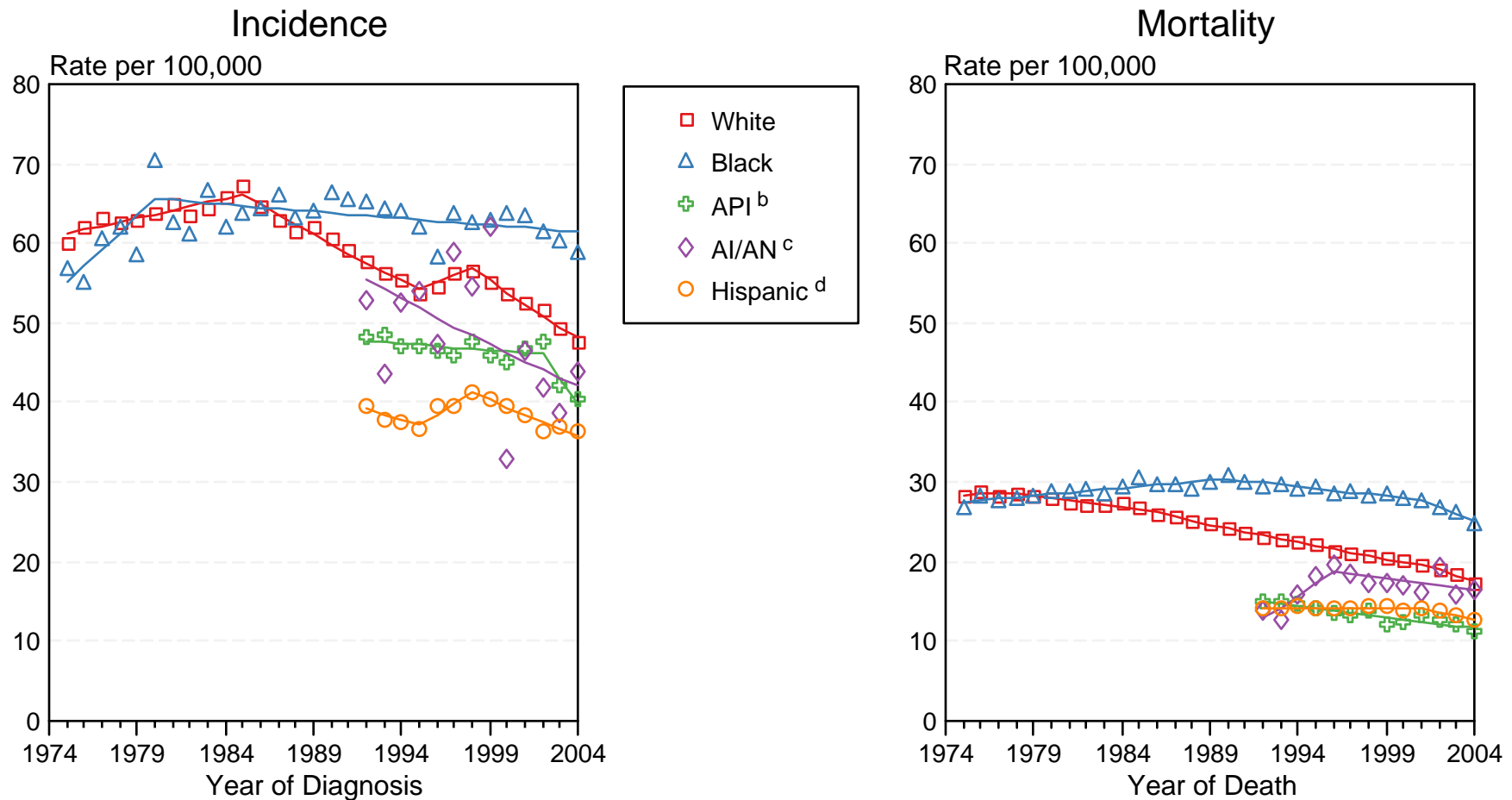


Figure VI-2

Source: Incidence data for whites and blacks are from the SEER 9 areas (San Francisco, Connecticut, Detroit, Hawaii, Iowa, New Mexico, Seattle, Utah, Atlanta). Incidence data for Asian/Pacific Islanders, American Indians/Alaska Natives and Hispanics are from the SEER 13 Areas (SEER 9 Areas, San Jose-Monterey, Los Angeles, Alaska Native Registry and Rural Georgia). Mortality data are from NCHS public use data file for the total US.

<sup>a</sup> Rates are age-adjusted to the 2000 US Std Population (19 age groups - Census P25-1103).

Regression lines are calculated using the Joinpoint Regression Program Version 3.0, April 2005, National Cancer Institute.

<sup>b</sup> API = Asian/Pacific Islander.

<sup>c</sup> AI/AN = American Indian/Alaska Native. Rates for American Indian/Alaska Native are based on the CHSDA (Contract Health Service Delivery Area) counties.

<sup>d</sup> Hispanic is not mutually exclusive from whites, blacks, Asian/Pacific Islanders, and American Indians/Alaska Natives. Incidence data for Hispanics are based on NHIA and exclude cases from the Alaska Native Registry. Mortality data for Hispanics exclude cases from Connecticut, Maine, Maryland, Minnesota, New Hampshire, New York, North Dakota, Oklahoma, and Vermont.