

Table XV-1
LUNG AND BRONCHUS CANCER (Invasive)

TRENDS IN SEER INCIDENCE^a AND U.S. MORTALITY^b USING THE JOINPOINT REGRESSION PROGRAM, 1975-2004
WITH UP TO THREE JOINPOINTS BY RACE AND SEX

		Joinpoint Segment 1		Joinpoint Segment 2		Joinpoint Segment 3		Joinpoint Segment 4	
		Year	APC	Year	APC	Year	APC	Year	APC
<u>SEER Cancer Incidence^a</u>									
All Races	Male and Female	1975-1982	2.5*	1982-1991	1.0*	1991-2004	-0.9*		
All Races	Male	1975-1982	1.4*	1982-1991	-0.4	1991-2004	-1.9*		
All Races	Female	1975-1982	5.5*	1982-1990	3.5*	1990-1998	1.0*	1998-2004	-0.5
White	Male and Female	1975-1987	2.0*	1987-1998	-0.1	1998-2004	-1.3*		
White	Male	1975-1981	1.5*	1981-1990	-0.2	1990-2004	-1.8*		
White	Female	1975-1982	5.6*	1982-1988	4.1*	1988-1997	1.6*	1997-2004	-0.4
Black	Male and Female	1975-1985	3.2*	1985-2004	-0.9*				
Black	Male	1975-1984	3.3*	1984-2004	-1.8*				
Black	Female	1975-1990	4.3*	1990-2004	0.4				
<u>SEER Delay-Adjusted Incidence^a</u>									
All Races	Male and Female	1975-1982	2.5*	1982-1991	1.0*	1991-2004	-0.7*		
All Races	Male	1975-1982	1.5*	1982-1991	-0.5	1991-2004	-1.8*		
All Races	Female	1975-1982	5.5*	1982-1990	3.5*	1990-1998	1.0*	1998-2004	-0.1
White	Male and Female	1975-1982	2.5*	1982-1991	1.1*	1991-2004	-0.6*		
White	Male	1975-1981	1.4*	1981-1989	-0.1	1989-2004	-1.6*		
White	Female	1975-1982	5.6*	1982-1988	4.1*	1988-1997	1.6*	1997-2004	0.0
Black	Male and Female	1975-1985	3.1*	1985-2004	-0.8*				
Black	Male	1975-1984	3.2*	1984-2004	-1.7*				
Black	Female	1975-1990	4.2*	1990-2004	0.5				
<u>U.S. Cancer Mortality^b</u>									
All Races	Male and Female	1975-1980	3.0*	1980-1990	1.8*	1990-1995	-0.2	1995-2004	-1.0*
All Races	Male	1975-1982	1.7*	1982-1990	0.5*	1990-1994	-1.3*	1994-2004	-2.0*
All Races	Female	1975-1982	6.0*	1982-1990	4.2*	1990-1995	1.7*	1995-2004	0.2*
White	Male and Female	1975-1980	2.9*	1980-1990	1.8*	1990-1995	-0.1	1995-2004	-0.8*
White	Male	1975-1982	1.7*	1982-1991	0.4*	1991-2004	-1.8*		
White	Female	1975-1983	5.8*	1983-1990	4.1*	1990-1995	1.9*	1995-2004	0.3*
Black	Male and Female	1975-1981	3.5*	1981-1990	1.9*	1990-1995	-0.7*	1995-2004	-1.6*
Black	Male	1975-1982	2.9*	1982-1990	1.3*	1990-1994	-1.3	1994-2004	-2.7*
Black	Female	1975-1982	6.3*	1982-1992	3.7*	1992-2004	0.4*		

Joinpoint Regression Program Version 3.0, April 2005, National Cancer Institute. (<http://srab.cancer.gov/joinpoint/>).

The APC is the Annual Percent Change based on rates age-adjusted to the 2000 US Std Population (19 age groups - Census P25-1130).

^a Trends are from the SEER 9 areas (San Francisco, Connecticut, Detroit, Hawaii, Iowa, New Mexico, Seattle, Utah, and Atlanta).

^b Trends are from the NCHS public use data file for the total US.

* The APC is significantly different from zero (p<.05).

Table XV-2
 SMALL CELL LUNG AND BRONCHUS CANCER (Invasive) AND NON-SMALL CELL LUNG AND BRONCHUS CANCER (Invasive)

TRENDS IN SEER INCIDENCE^a USING THE JOINTPOINT REGRESSION PROGRAM, 1975-2004
 WITH UP TO THREE JOINTPOINTS BY RACE AND SEX

		Joinpoint Segment 1		Joinpoint Segment 2		Joinpoint Segment 3		Joinpoint Segment 4	
		Year	APC	Year	APC	Year	APC	Year	APC
<u>SEER Cancer Incidence for Small Cell Lung and Bronchus^a</u>									
All Races	Male and Female			1982-1989	1.3*	1989-2003	-2.4*		
All Races	Male	1975-1980	6.4*	1980-1988	0.5	1988-2003	-3.4*		
All Races	Female	1975-1982	9.6*	1982-1991	2.9*	1991-2003	-1.7*		
White	Male and Female	1975-1982	6.3*	1982-1989	1.4*	1989-2003	-2.2*		
White	Male	1975-1980	6.2*	1980-1988	0.6	1988-2003	-3.3*		
White	Female	1975-1982	10.0*	1982-1990	3.4*	1990-2003	-1.2*		
Black	Male and Female	1975-1986	4.7*	1986-2003	-2.3*				
Black	Male	1975-1985	4.8*	1985-2003	-3.3*				
Black	Female	1975-1991	4.6*	1991-2003	-2.2				
<u>SEER Cancer Incidence for Non-Small Cell Lung and Bronchus^a</u>									
All Races	Male and Female	1975-1991	1.3*	1991-2003	-0.6*				
All Races	Male	1975-1982	0.9*	1982-1992	-0.4	1992-2003	-1.6*		
All Races	Female	1975-1988	4.3*	1988-1998	1.7*	1998-2003	-0.4		
White	Male and Female	1975-1990	1.5*	1990-2003	-0.3*				
White	Male	1975-1988	0.3*	1988-2003	-1.4*				
White	Female	1975-1988	4.4*	1988-1997	1.9*	1997-2003	0.0		
Black	Male and Female	1975-1984	3.2*	1984-2003	-0.6*				
Black	Male	1975-1984	2.9*	1984-2003	-1.5*				
Black	Female	1975-1990	4.1*	1990-2003	0.8*				

Joinpoint Regression Program Version 3.0, April 2005, National Cancer Institute. (<http://srab.cancer.gov/joinpoint/>).

The APC is the Annual Percent Change based on rates age-adjusted to the 2000 US Std Population (19 age groups - Census P25-1130).

^a Trends are from the SEER 9 areas (San Francisco, Connecticut, Detroit, Hawaii, Iowa, New Mexico, Seattle, Utah, and Atlanta).

* The APC is significantly different from zero (p<.05).

Table XV-3
LUNG AND BRONCHUS CANCER (Invasive)

AGE ADJUSTED SEER INCIDENCE^a RATES BY YEAR, RACE AND SEX

	All Races			Whites			Blacks		
	Total	Males	Females	Total	Males	Females	Total	Males	Females
<u>AGE-ADJUSTED RATES</u>									
YEAR OF DIAGNOSIS:									
1975	52.3	89.6	24.5	52.0	89.2	24.9	64.6	114.9	24.7
1976	55.4	93.8	27.3	54.6	92.8	27.3	72.3	131.0	28.6
1977	56.7	95.5	28.3	55.9	94.7	28.1	73.6	124.8	33.9
1978	57.8	96.7	29.7	57.3	95.9	29.9	74.5	130.5	31.6
1979	58.6	95.8	31.6	58.0	95.2	31.6	74.5	127.6	34.1
1980	60.7	100.0	32.2	59.4	97.7	32.4	86.6	151.5	38.3
1981	62.0	99.4	35.1	61.6	98.5	35.5	82.2	143.0	37.2
1982	63.3	100.7	36.7	63.1	99.7	37.7	80.4	141.1	35.7
1983	63.4	99.5	37.9	63.0	97.6	39.1	86.6	151.3	39.5
1984	65.5	102.1	39.5	64.3	99.9	39.6	93.1	159.2	44.8
1985	64.6	98.7	40.2	64.0	96.9	40.9	89.6	149.7	46.0
1986	65.8	99.1	42.3	65.2	97.4	42.9	92.9	156.2	48.6
1987	67.9	101.5	44.2	68.1	100.7	45.5	84.8	143.7	43.2
1988	68.0	98.7	46.3	68.2	97.9	47.7	88.1	144.9	48.1
1989	67.5	97.9	46.1	67.5	97.0	47.2	89.0	142.8	51.4
1990	68.0	96.9	47.7	68.2	96.1	48.9	86.7	137.0	52.0
1991	69.2	97.3	49.6	69.0	95.9	50.6	93.2	145.0	56.9
1992	69.4	97.2	49.8	68.9	94.8	51.0	93.9	149.0	55.8
1993	67.7	93.9	49.2	67.8	92.5	50.7	86.3	135.4	52.4
1994	67.1	90.9	50.5	67.3	90.1	51.6	86.9	131.1	56.2
1995	66.8	89.7	50.4	67.0	87.9	52.4	85.7	138.6	50.0
1996	66.4	88.0	51.1	66.7	86.7	52.9	84.0	127.9	55.1
1997	66.5	86.2	52.5	67.2	84.8	54.9	82.1	129.4	50.4
1998	67.5	88.0	52.9	68.0	86.5	55.0	87.0	130.5	57.7
1999	65.7	84.5	52.4	66.2	83.2	54.3	84.2	121.7	58.7
2000	63.9	81.8	51.1	64.6	80.6	53.2	79.1	112.8	56.5
2001	63.8	80.8	51.4	64.8	80.6	53.4	79.6	113.4	56.7
2002	63.5	79.8	51.9	64.2	79.2	53.7	80.5	111.1	60.1
2003	63.8	79.9	52.2	64.7	78.5	54.9	79.3	116.4	54.3
2004	60.0	73.6	50.2	60.6	72.7	52.0	73.0	100.0	54.9
1975-2004	64.3	91.8	44.5	64.3	90.7	45.4	83.2	132.1	48.8

^a SEER 9 areas (San Francisco, Connecticut, Detroit, Hawaii, Iowa, New Mexico, Seattle, Utah, and Atlanta). Rates are per 100,000 and are age-adjusted to the 2000 US Std Population (19 age groups - Census P25-1130).

- Statistic not shown. Rate based on less than 16 cases for the time interval.

Table XV-4
 SMALL CELL LUNG AND BRONCHUS CANCER (Invasive)

AGE ADJUSTED SEER INCIDENCE^a RATES BY YEAR, RACE AND SEX

	All Races			Whites			Blacks		
	Total	Males	Females	Total	Males	Females	Total	Males	Females
<u>AGE-ADJUSTED RATES</u>									
YEAR OF DIAGNOSIS:									
1975	6.6	10.4	3.8	6.9	10.7	4.0	5.9	8.9	3.5
1976	7.1	11.4	3.8	7.1	11.5	3.9	8.2	12.8	4.8
1977	7.7	12.4	4.2	7.8	12.8	4.2	8.1	11.2	5.8
1978	8.6	13.4	5.0	8.9	13.7	5.3	7.8	13.9	3.1
1979	8.7	13.1	5.3	9.0	13.6	5.6	7.6	11.8	4.5
1980	9.1	14.2	5.2	9.3	14.4	5.5	10.0	17.5	4.4
1981	9.7	14.5	6.1	10.0	14.8	6.5	9.2	15.9	4.2
1982	10.4	14.9	7.1	10.7	15.3	7.6	9.6	15.9	4.9
1983	10.4	14.9	7.1	10.7	15.0	7.6	9.1	15.1	4.9
1984	10.7	15.2	7.4	11.0	15.6	7.8	10.4	15.0	6.9
1985	10.4	15.0	7.1	10.8	15.3	7.5	11.1	17.8	6.3
1986	11.2	15.5	8.0	11.5	16.0	8.3	12.3	17.7	8.4
1987	10.6	14.1	8.2	11.2	14.6	8.8	9.5	14.5	6.0
1988	11.4	15.3	8.5	11.9	15.6	9.2	10.5	17.9	5.3
1989	11.2	14.8	8.7	11.7	15.2	9.2	12.1	17.7	8.4
1990	10.7	13.8	8.4	11.3	14.5	9.1	9.4	13.7	6.2
1991	11.3	14.0	9.4	11.7	14.3	9.8	12.4	16.0	10.0
1992	10.5	13.4	8.4	11.0	13.8	9.0	10.2	13.4	8.0
1993	10.0	12.3	8.3	10.5	12.6	8.9	9.4	13.2	6.7
1994	9.8	11.7	8.4	10.2	12.0	9.1	9.9	13.6	7.4
1995	9.8	12.2	8.1	10.4	12.6	8.8	9.4	13.7	6.6
1996	9.7	12.1	8.0	10.3	12.4	8.6	8.8	12.0	6.8
1997	9.5	10.9	8.6	10.1	11.1	9.5	7.9	10.8	6.1
1998	9.3	10.8	8.1	9.9	11.3	8.8	9.4	12.1	7.4
1999	8.8	10.0	7.9	9.3	10.2	8.7	8.1	10.9	6.0
2000	8.7	10.4	7.6	9.3	10.8	8.1	9.4	11.5	7.8
2001	8.3	9.8	7.3	8.9	10.2	7.9	8.4	10.8	6.8
2002	8.2	9.3	7.5	8.9	9.8	8.3	7.2	9.7	5.7
2003	8.1	9.0	7.5	8.6	9.2	8.3	7.8	9.4	6.7
2004	7.9	8.7	7.3	8.3	9.0	7.8	8.4	9.7	7.6
1975-2004	9.5	12.4	7.3	9.9	12.8	7.8	9.2	13.2	6.4

^a SEER 9 areas (San Francisco, Connecticut, Detroit, Hawaii, Iowa, New Mexico, Seattle, Utah, and Atlanta). Rates are per 100,000 and are age-adjusted to the 2000 US Std Population (19 age groups - Census P25-1130).
 - Statistic not shown. Rate based on less than 16 cases for the time interval.

Table XV-5
 NON-SMALL CELL LUNG AND BRONCHUS CANCER (Invasive)

AGE ADJUSTED SEER INCIDENCE^a RATES BY YEAR, RACE AND SEX

	All Races			Whites			Blacks		
	Total	Males	Females	Total	Males	Females	Total	Males	Females
<u>AGE-ADJUSTED RATES</u>									
YEAR OF DIAGNOSIS:									
1975	45.6	79.2	20.8	45.1	78.5	20.9	58.7	106.0	21.2
1976	48.4	82.5	23.5	47.5	81.3	23.4	64.1	118.2	23.9
1977	49.0	83.1	24.1	48.0	82.0	23.8	65.4	113.6	28.1
1978	49.2	83.3	24.6	48.4	82.2	24.6	66.7	116.6	28.5
1979	49.9	82.7	26.2	49.0	81.6	26.0	66.9	115.8	29.6
1980	51.6	85.8	27.0	50.1	83.3	26.8	76.7	133.9	33.9
1981	52.3	84.9	29.0	51.5	83.6	29.1	73.0	127.1	33.0
1982	52.9	85.8	29.6	52.3	84.4	30.2	70.7	125.1	30.8
1983	53.1	84.6	30.8	52.3	82.6	31.5	77.5	136.3	34.6
1984	54.8	86.9	32.0	53.3	84.3	31.9	82.6	144.2	38.0
1985	54.2	83.7	33.1	53.2	81.7	33.4	78.5	131.9	39.8
1986	54.6	83.5	34.3	53.6	81.4	34.7	80.6	138.5	40.3
1987	57.3	87.4	36.0	56.9	86.1	36.7	75.2	129.2	37.2
1988	56.6	83.4	37.8	56.3	82.3	38.5	77.6	127.1	42.8
1989	56.3	83.1	37.4	55.9	81.8	38.0	77.0	125.1	43.0
1990	57.4	83.1	39.3	56.9	81.7	39.8	77.3	123.3	45.8
1991	57.9	83.3	40.2	57.3	81.6	40.8	80.8	129.0	46.9
1992	58.9	83.8	41.4	57.9	81.0	42.1	83.7	135.5	47.8
1993	57.7	81.6	40.8	57.3	79.8	41.7	76.9	122.1	45.7
1994	57.4	79.2	42.1	57.0	78.1	42.6	76.9	117.5	48.7
1995	56.9	77.5	42.3	56.7	75.3	43.7	76.2	124.9	43.4
1996	56.7	75.9	43.1	56.5	74.2	44.3	75.2	115.9	48.2
1997	57.0	75.3	43.9	57.0	73.6	45.4	74.3	118.6	44.3
1998	58.2	77.1	44.7	58.1	75.3	46.1	77.7	118.4	50.2
1999	56.9	74.4	44.4	56.9	72.9	45.6	76.0	110.8	52.6
2000	55.2	71.5	43.5	55.3	69.9	45.1	69.7	101.3	48.7
2001	55.4	71.1	44.1	55.9	70.3	45.4	71.1	102.6	49.9
2002	55.2	70.4	44.4	55.3	69.4	45.4	73.2	101.4	54.4
2003	55.7	70.8	44.7	56.0	69.3	46.6	71.5	107.0	47.6
2004	52.1	64.8	42.9	52.3	63.7	44.1	64.5	90.3	47.3
1975-2004	54.8	79.4	37.2	54.4	78.0	37.6	74.0	118.9	42.4

^a SEER 9 areas (San Francisco, Connecticut, Detroit, Hawaii, Iowa, New Mexico, Seattle, Utah, and Atlanta). Rates are per 100,000 and are age-adjusted to the 2000 US Std Population (19 age groups - Census P25-1130).

- Statistic not shown. Rate based on less than 16 cases for the time interval.

Table XV-6
LUNG AND BRONCHUS CANCER (Invasive)

AGE-ADJUSTED U.S. DEATH^a RATES BY YEAR, RACE AND SEX

	All Races			Whites			Blacks		
	Total	Males	Females	Total	Males	Females	Total	Males	Females
<u>AGE-ADJUSTED RATES</u>									
YEAR OF DEATH:									
1975	42.6	76.4	17.6	42.1	75.5	17.7	49.3	91.0	17.3
1976	44.2	78.5	19.0	43.7	77.6	19.1	51.1	94.0	18.5
1977	45.5	80.4	20.0	44.8	79.1	20.1	54.6	100.8	19.9
1978	46.9	82.1	21.4	46.3	80.8	21.6	55.3	101.6	20.7
1979	47.7	82.9	22.3	47.1	81.6	22.4	56.4	102.9	22.2
1980	49.4	84.7	24.1	48.8	83.3	24.2	59.2	106.7	24.6
1981	50.0	85.2	24.9	49.3	83.5	25.1	60.6	109.7	25.1
1982	51.4	86.8	26.5	50.8	85.2	26.7	62.3	112.5	26.3
1983	52.4	87.0	28.1	51.7	85.4	28.3	63.7	112.8	28.7
1984	53.4	88.2	28.9	52.6	86.2	29.3	65.1	118.0	28.0
1985	54.3	88.5	30.4	53.7	86.7	30.8	65.8	117.5	29.6
1986	55.0	89.0	31.4	54.4	87.0	31.8	67.0	119.2	31.0
1987	56.2	90.0	32.7	55.6	88.1	33.0	68.6	121.8	32.5
1988	57.0	89.9	34.1	56.4	87.9	34.6	69.2	122.2	33.5
1989	57.9	89.8	35.8	57.2	87.6	36.3	71.0	124.7	34.9
1990	58.9	90.6	36.8	58.2	88.4	37.3	72.1	125.2	36.5
1991	59.0	89.9	37.6	58.4	87.8	38.1	71.6	123.6	37.2
1992	58.9	88.0	38.7	58.3	86.0	39.2	71.4	121.1	38.6
1993	59.1	87.6	39.3	58.7	85.5	40.0	71.1	122.0	37.7
1994	58.5	85.7	39.6	58.2	83.8	40.3	70.2	118.6	38.6
1995	58.4	84.4	40.3	58.1	82.6	41.0	69.3	116.1	38.8
1996	57.9	82.8	40.4	57.7	81.2	41.2	68.3	113.2	39.1
1997	57.5	81.3	40.8	57.3	79.8	41.5	67.9	110.2	40.5
1998	57.1	79.9	41.0	56.9	78.5	41.7	66.9	107.4	40.7
1999	55.4	77.0	40.1	55.3	75.7	40.9	65.0	103.6	40.0
2000	55.8	76.5	41.1	56.0	75.4	42.1	63.8	100.9	39.7
2001	55.3	75.2	41.0	55.5	74.3	42.0	62.7	99.4	38.8
2002	55.0	73.5	41.6	55.3	72.8	42.6	62.2	95.7	40.3
2003	54.2	71.9	41.2	54.5	71.2	42.2	61.1	93.1	40.3
2004	53.3	70.3	40.9	53.6	69.6	41.9	60.0	90.6	40.0
1975-2004	54.5	82.9	34.2	54.1	81.5	34.6	64.4	109.2	33.7

^a NCHS public use data file for the total US. Rates are per 100,000 and are age-adjusted to the 2000 US Std Population (19 age groups - Census P25-1130).

- Statistic not shown. Rate based on less than 16 cases for the time interval.

Table XV-7
LUNG AND BRONCHUS CANCER (Invasive)

SEER INCIDENCE^a AND U.S. DEATH^b RATES, AGE-ADJUSTED AND AGE-SPECIFIC RATES, BY RACE AND SEX

	All Races			Whites			Blacks		
	Total	Males	Females	Total	Males	Females	Total	Males	Females
<u>SEER INCIDENCE</u>									
<u>AGE AT DIAGNOSIS</u>									
AGE-ADJUSTED RATES, 2000-2004									
All ages	64.5	81.2	52.3	65.7	81.0	54.6	76.6	110.6	53.7
Under 65	21.9	25.0	19.0	21.8	24.1	19.6	31.9	42.6	23.2
65 and over	358.7	469.5	282.5	368.9	473.9	296.7	385.3	580.6	264.6
All ages(IARC world std) ^c	41.3	50.5	34.0	42.0	50.2	35.6	51.1	71.8	36.0
AGE-SPECIFIC RATES, 2000-2004									
<1	-	-	-	-	-	-	-	-	-
1-4	-	-	-	-	-	-	-	-	-
5-9	-	-	-	-	-	-	-	-	-
10-14	-	-	-	-	-	-	-	-	-
15-19	0.1	-	0.1	0.1	-	-	-	-	-
20-24	0.3	0.3	0.3	0.3	0.3	0.3	-	-	-
25-29	0.5	0.5	0.6	0.6	0.6	0.6	-	-	-
30-34	1.2	1.2	1.2	1.1	1.1	1.2	1.2	1.3	1.2
35-39	3.8	3.5	4.1	3.7	3.4	4.1	4.7	4.3	5.1
40-44	11.4	11.3	11.5	11.1	10.6	11.5	18.2	19.9	16.6
45-49	25.8	28.0	23.7	24.8	26.1	23.6	43.9	53.6	35.4
50-54	52.6	59.9	45.6	51.2	56.5	46.1	86.1	112.6	63.6
55-59	106.8	122.5	92.1	106.0	117.2	95.3	161.2	222.3	110.4
60-64	190.8	226.3	158.3	195.0	223.7	168.2	245.0	343.9	165.7
65-69	290.8	352.2	238.1	301.3	357.2	252.4	336.8	467.3	237.5
70-74	382.2	479.3	304.8	397.3	486.0	325.1	408.2	596.6	277.3
75-79	432.6	570.2	336.1	444.9	575.4	352.7	458.0	689.1	315.6
80-84	397.5	545.3	305.6	403.7	545.7	315.4	410.4	664.7	272.4
85+	287.2	446.2	215.2	288.0	447.3	217.0	290.1	512.7	201.1
<u>U.S. MORTALITY</u>									
<u>AGE AT DEATH</u>									
AGE-ADJUSTED RATES, 2000-2004									
All ages	54.7	73.4	41.1	55.0	72.6	42.1	62.0	95.8	39.8
Under 65	17.3	21.2	13.7	17.0	20.4	13.9	23.8	34.0	15.5
65 and over	312.9	434.1	230.9	317.0	433.6	237.5	325.4	523.1	207.8
All ages(IARC world std) ^c	34.1	44.4	25.9	34.2	43.7	26.5	40.2	60.6	25.8
AGE-SPECIFIC RATES, 2000-2004									
<1	-	-	-	-	-	-	-	-	-
1-4	-	-	-	-	-	-	-	-	-
5-9	-	-	-	-	-	-	-	-	-
10-14	-	-	-	-	-	-	-	-	-
15-19	0.0	-	-	0.0	-	-	-	-	-
20-24	0.1	0.1	0.1	0.1	0.1	0.1	-	-	-
25-29	0.2	0.2	0.2	0.2	0.2	0.2	0.2	-	-
30-34	0.6	0.6	0.6	0.6	0.6	0.6	0.7	0.7	0.6
35-39	2.6	2.7	2.6	2.6	2.5	2.6	3.4	3.9	3.0
40-44	9.0	9.8	8.1	8.5	9.1	8.0	13.8	17.3	10.8
45-49	20.7	24.3	17.2	19.6	22.4	16.8	33.3	44.1	24.0
50-54	41.5	51.1	32.4	40.0	47.7	32.4	64.0	91.3	40.7
55-59	85.2	105.5	66.1	83.9	101.3	67.3	118.5	172.0	74.5
60-64	152.0	190.4	117.2	152.9	187.1	121.3	185.4	274.5	115.6
65-69	234.9	301.8	177.2	237.8	299.9	183.1	266.0	397.1	168.9
70-74	318.6	421.4	236.5	323.7	421.2	244.4	334.3	515.0	213.0
75-79	372.3	513.6	272.4	376.8	511.8	280.1	388.1	629.2	244.0
80-84	374.7	541.9	273.4	379.1	541.8	279.8	369.3	629.5	234.7
85+	299.1	489.9	217.0	302.5	493.5	220.4	278.6	510.8	189.4

^a SEER 17 areas. Rates are per 100,000 and are age-adjusted to the 2000 US Std Population (19 age groups - Census P25-1130), unless noted.

^b NCHS public use data file for the total US. Rates are per 100,000 and are age-adjusted to the 2000 US Std Population (19 age groups - Census P25-1130), unless noted.

^c Rates are per 100,000 and are age-adjusted to the IARC world standard population.

- Statistic not shown. Rate based on less than 16 cases for the time interval.

Table XV-8
 SMALL CELL LUNG AND BRONCHUS CANCER (Invasive) and NON-SMALL CELL LUNG AND BRONCHUS CANCER (Invasive)

SEER INCIDENCE^a RATES, AGE-ADJUSTED AND AGE-SPECIFIC RATES, BY RACE AND SEX

	All Races			Whites			Blacks		
	Total	Males	Females	Total	Males	Females	Total	Males	Females
<u>SMALL CELL LUNG AND BRONCHUS CANCER</u>									
<u>AGE AT DIAGNOSIS</u>									
AGE-ADJUSTED RATES, 2000-2004									
All ages	8.4	9.7	7.4	9.0	10.1	8.1	7.8	10.0	6.3
Under 65	3.3	3.5	3.1	3.5	3.7	3.4	3.3	4.1	2.7
65 and over	43.7	52.4	37.7	46.5	54.6	41.0	38.5	51.0	30.8
All ages(IARC world std) ^b	5.7	6.4	5.2	6.1	6.7	5.7	5.3	6.7	4.4
AGE-SPECIFIC RATES, 2000-2004									
<1	-	-	-	-	-	-	-	-	-
1-4	-	-	-	-	-	-	-	-	-
5-9	-	-	-	-	-	-	-	-	-
10-14	-	-	-	-	-	-	-	-	-
15-19	-	-	-	-	-	-	-	-	-
20-24	-	-	-	-	-	-	-	-	-
25-29	-	-	-	-	-	-	-	-	-
30-34	0.1	-	-	0.1	-	-	-	-	-
35-39	0.4	0.3	0.4	0.4	0.4	0.4	-	-	-
40-44	1.3	1.3	1.4	1.4	1.4	1.5	1.3	1.2	1.3
45-49	3.5	3.6	3.4	3.8	3.9	3.8	3.7	4.3	3.1
50-54	7.8	8.7	7.1	8.4	9.1	7.7	8.8	10.7	7.2
55-59	16.9	17.8	16.1	17.9	18.3	17.6	18.4	22.8	14.7
60-64	29.6	32.0	27.4	32.3	33.9	30.7	27.7	34.5	22.3
65-69	42.8	46.4	39.7	46.2	48.8	43.9	39.3	48.7	32.1
70-74	51.7	59.4	45.6	56.0	62.9	50.4	39.8	47.7	34.2
75-79	52.8	65.4	43.9	55.7	67.8	47.3	47.9	64.1	37.9
80-84	38.8	50.4	31.7	40.1	51.2	33.3	37.7	58.0	26.6
85+	18.7	31.4	13.0	19.1	31.8	13.4	18.6	31.6	13.4
<u>NON-SMALL CELL LUNG AND BRONCHUS CANCER</u>									
<u>AGE AT DIAGNOSIS</u>									
AGE-ADJUSTED RATES, 2000-2004									
All ages	56.1	71.5	44.9	56.7	70.9	46.5	68.8	100.6	47.4
Under 65	18.6	21.5	15.9	18.3	20.5	16.2	28.6	38.5	20.4
65 and over	315.0	417.1	244.8	322.4	419.2	255.7	346.8	529.7	233.8
All ages(IARC world std) ^b	35.6	44.1	28.9	35.9	43.5	29.9	45.7	65.2	31.6
AGE-SPECIFIC RATES, 2000-2004									
<1	-	-	-	-	-	-	-	-	-
1-4	-	-	-	-	-	-	-	-	-
5-9	-	-	-	-	-	-	-	-	-
10-14	-	-	-	-	-	-	-	-	-
15-19	0.1	-	0.1	0.1	-	-	-	-	-
20-24	0.3	0.3	0.3	0.3	0.2	0.3	-	-	-
25-29	0.5	0.5	0.5	0.6	0.6	0.6	-	-	-
30-34	1.1	1.1	1.1	1.0	1.0	1.1	1.2	1.3	1.2
35-39	3.4	3.2	3.7	3.3	3.0	3.7	4.4	4.1	4.7
40-44	10.1	10.1	10.2	9.6	9.3	10.0	16.9	18.7	15.2
45-49	22.3	24.3	20.4	21.0	22.2	19.8	40.3	49.3	32.3
50-54	44.7	51.2	38.6	42.9	47.4	38.4	77.3	101.9	56.4
55-59	89.9	104.7	76.0	88.1	98.9	77.7	142.8	199.5	95.8
60-64	161.1	194.3	130.9	162.7	189.8	137.5	217.3	309.4	143.4
65-69	248.0	305.8	198.4	255.1	308.4	208.5	297.6	418.6	205.4
70-74	330.4	419.9	259.2	341.3	423.2	274.7	368.4	548.9	243.1
75-79	379.8	504.8	292.2	389.1	507.6	305.4	410.1	625.0	277.6
80-84	358.6	494.9	273.9	363.5	494.5	282.2	372.7	606.6	245.8
85+	268.5	414.8	202.2	268.9	415.5	203.6	271.5	481.2	187.7

^a SEER 17 areas. Rates are per 100,000 and are age-adjusted to the 2000 US Std Population (19 age groups - Census P25-1130), unless noted.

^b Rates are per 100,000 and are age-adjusted to the IARC world standard population.

- Statistic not shown. Rate based on less than 16 cases for the time interval.

Table XV-9
LUNG AND BRONCHUS CANCER (Invasive)

SURVIVAL RATES, BY RACE, SEX, DIAGNOSIS YEAR, STAGE AND AGE

	All Races			Whites			Blacks		
	Total	Males	Females	Total	Males	Females	Total	Males	Females
<u>5-YR RELATIVE SURVIVAL RATES</u>									
YEAR OF DIAGNOSIS:									
1960-1963 ^a	-	-	-	8	7	11	5	5	6
1970-1973 ^a	-	-	-	10	9	14	7	6	10
1975-1977 ^b	12.7	11.5	15.8	12.8	11.5	15.9	11.5	10.7	14.0
1978-1980 ^b	13.3	11.8	16.6	13.4	12.0	16.6	12.0	10.0	17.9
1981-1983 ^b	13.7	12.1	16.9	13.9	12.3	17.1	11.7	10.5	14.9
1984-1986 ^b	13.3	11.6	16.3	13.5	11.7	16.7	11.4	10.6	13.0
1987-1989 ^b	13.6	12.4	15.4	13.8	12.5	15.8	11.2	11.1	11.5
1990-1992 ^b	14.1	12.6	16.3	14.5	13.0	16.6	10.8	9.6	12.8
1993-1995 ^b	14.8	12.9	17.4	15.1	13.1	17.7	13.0	11.5	15.8
1996-2003 ^b	15.5 ^e	13.4 ^e	17.9 ^e	15.7 ^e	13.6 ^e	18.1 ^e	12.5 ^e	10.8	14.9
<u>5-YR PERIOD SURVIVAL RATES^{cd}</u>									
YEAR OF DIAGNOSIS:									
1996-2003	15.1	12.9	17.7	15.4	13.2	17.8	12.1	10.3	14.7
<u>STAGE DISTRIBUTION (%) 1996-2003^c</u>									
All Stages									
Number of cases	209,212	115,421	93,791	173,860	93,945	79,915	22,088	13,287	8,801
Percent	100%	100%	100%	100%	100%	100%	100%	100%	100%
Localized	16	15	18	16	15	18	14	13	15
Regional	35	35	35	35	35	34	36	36	37
Distant	41	43	39	41	42	39	43	45	41
Unstaged	8	7	8	8	7	8	7	6	7
<u>5-YR RELATIVE SURVIVAL RATES, 1996-2003^c</u>									
AGE AT DIAGNOSIS:									
<45	23.1	20.8	25.4	25.2	23.7	26.7	14.8	11.5	18.8
45-54	17.8	14.3	22.2	18.5	14.7	23.2	13.7	11.6	17.3
55-64	17.0	14.6	20.3	17.5	15.1	20.6	13.3	11.1	17.1
65-74	15.0	13.0	17.5	15.2	13.2	17.7	11.0	9.6	12.9
75+	10.5	9.2	11.7	10.7	9.3	11.9	8.3	7.0	9.6
Under 65	17.7	15.0	21.4	18.4	15.6	21.9	13.7	11.4	17.4
65 and over	13.2	11.5	15.0	13.3	11.7	15.1	10.1	8.8	11.7
STAGE:									
All Stages	15.0	13.0	17.4	15.3	13.2	17.6	12.0	10.2	14.6
Localized	49.1	44.6	53.4	49.8	45.4	53.8	40.4	36.7	44.7
Regional	15.2	13.9	16.8	15.5	14.2	16.9	12.9	10.9	15.7
Distant	3.0	2.7	3.4	2.9	2.5	3.4	2.8	2.6	3.1
Unstaged	8.1	7.6	8.7	7.8	7.1	8.5	8.5	8.7	8.2

^a Rates are based on End Results data from a series of hospital registries and one population-based registry.

^b Rates are from the SEER 9 areas (San Francisco, Connecticut, Detroit, Hawaii, Iowa, New Mexico, Seattle, Utah, Atlanta).

Rates are based on follow-up of patients into 2004.

^c Rates are from the SEER 17 areas (San Francisco, Connecticut, Detroit, Hawaii, Iowa, New Mexico, Seattle, Utah, Atlanta, San Jose-Monterey, Los Angeles, Alaska Native Registry, Rural Georgia, California excluding SF/SJM/LA, Kentucky, Louisiana and New Jersey). California excluding SF/SJM/LA, Kentucky, Louisiana, and New Jersey contribute cases for diagnosis years 2000-2003. The remaining 13 SEER Areas contribute cases for the entire period 1996-2003. Rates are based on follow-up of patients into 2004.

^d Period survival provides a more up-to-date estimate of survival by piecing together the most recent conditional survival estimates from several cohorts. It is computed here using three calendar year blocks (2001-2003: 0-1 year survival), (2000-2002: 1-2 year survival), (1999-2001: 2-3 year survival), (1998-2000: 3-4 year survival), (1997-1999: 4-5 years survival).

^e The difference in rates between 1975-1977 and 1996-2003 is statistically significant ($p < .05$).

^f The standard error of the survival rate is between 5 and 10 percentage points.

^g The standard error of the survival rate is greater than 10 percentage points.

- Statistic could not be calculated due to fewer than 16 cases during the time period.

Table XV-10
SMALL CELL LUNG AND BRONCHUS CANCER (Invasive)

SURVIVAL RATES, BY RACE, SEX, DIAGNOSIS YEAR, STAGE AND AGE

	All Races			Whites			Blacks		
	Total	Males	Females	Total	Males	Females	Total	Males	Females
5-YR RELATIVE SURVIVAL RATES									
YEAR OF DIAGNOSIS:									
1975-1977 ^a	3.7	3.1	4.8	3.7	3.1	4.9	3.8	3.9	3.6
1978-1980 ^a	4.4	3.3	6.6	4.5	3.5	6.5	3.2	2.4	5.0
1981-1983 ^a	4.8	3.8	6.4	4.9	3.9	6.3	5.6	4.3	8.5
1984-1986 ^a	4.7	3.5	6.4	4.9	3.7	6.6	3.6	2.3	5.6
1987-1989 ^a	5.2	4.0	6.7	5.3	4.0	6.9	4.0	3.4	4.7
1990-1992 ^a	5.6	4.8	6.6	5.7	4.8	6.8	4.2	4.4	3.9
1993-1995 ^a	6.6	5.4	8.0	6.5	5.3	7.8	6.9	4.6	9.9
1996-2003 ^a	6.2 ^d	5.3 ^d	7.0 ^d	6.2 ^d	5.1 ^d	7.2 ^d	4.8 ^d	4.8 ^d	4.7
5-YR PERIOD SURVIVAL RATES^{bc}									
YEAR OF DIAGNOSIS:									
1996-2003	5.9	5.3	6.5	5.9	5.1	6.7	4.8	5.6	4.0
STAGE DISTRIBUTION (%) 1996-2003^b									
All Stages									
Number of cases	29,144	15,049	14,095	25,504	12,906	12,598	2,317	1,260	1,057
Percent	100%	100%	100%	100%	100%	100%	100%	100%	100%
Localized	6	6	6	6	6	6	6	6	6
Regional	33	31	35	33	30	35	35	35	36
Distant	56	59	54	57	60	53	54	55	54
Unstaged	5	4	5	5	4	5	4	4	5
5-YR RELATIVE SURVIVAL RATES, 1996-2003^b									
AGE AT DIAGNOSIS:									
<45	9.0	7.6	10.4	9.5	7.6	11.4	-	-	0.0
45-54	8.3	6.4	10.6	8.5	6.9	10.4	6.3	2.8	10.7
55-64	7.4	6.3	8.5	7.4	6.2	8.6	5.2	4.9	5.6
65-74	4.9	4.2	5.6	4.9	3.9	5.8	4.0	5.0	2.9
75+	2.8	2.3	3.2	2.9	2.6	3.2	1.4	1.1	2.0
Under 65	7.7	6.5	9.2	7.8	6.5	9.2	5.3	4.3	6.8
65 and over	4.2	3.6	4.7	4.2	3.5	4.9	3.2	3.7	2.6
STAGE:									
All Stages	5.7	4.9	6.6	5.8	4.9	6.7	4.3	3.9	4.7
Localized	18.9	17.3	20.3	18.5	17.3	19.6	17.7	19.9 ^e	13.2 ^e
Regional	9.9	9.2	10.4	10.2	9.4	10.9	6.3	6.3	6.4
Distant	1.9	1.4	2.4	1.8	1.4	2.4	0.8	0.0	2.3
Unstaged	6.5	5.8	7.0	6.4	6.1	6.7	7.1	-	8.6

^a Rates are from the SEER 9 areas (San Francisco, Connecticut, Detroit, Hawaii, Iowa, New Mexico, Seattle, Utah, Atlanta).

Rates are based on follow-up of patients into 2004.

^b Rates are from the SEER 17 areas (San Francisco, Connecticut, Detroit, Hawaii, Iowa, New Mexico, Seattle, Utah, Atlanta, San Jose-Monterey, Los Angeles, Alaska Native Registry, Rural Georgia, California excluding SF/SJM/LA, Kentucky, Louisiana and New Jersey). California excluding SF/SJM/LA, Kentucky, Louisiana, and New Jersey contribute cases for diagnosis years 2000-2003. The remaining 13 SEER Areas contribute cases for the entire period 1996-2003. Rates are based on follow-up of patients into 2004.

^c Period survival provides a more up-to-date estimate of survival by piecing together the most recent conditional survival estimates from several cohorts. It is computed here using three calendar year blocks (2001-2003: 0-1 year survival), (2000-2002: 1-2 year survival), (1999-2001: 2-3 year survival), (1998-2000: 3-4 year survival), (1997-1999: 4-5 years survival).

^d The difference in rates between 1975-1977 and 1996-2003 is statistically significant ($p < .05$).

^e The standard error of the survival rate is between 5 and 10 percentage points.

^f The standard error of the survival rate is greater than 10 percentage points.

- Statistic could not be calculated due to fewer than 16 cases during the time period.

Table XV-11
NON-SMALL CELL LUNG AND BRONCHUS CANCER (Invasive)

SURVIVAL RATES, BY RACE, SEX, DIAGNOSIS YEAR, STAGE AND AGE

	All Races			Whites			Blacks		
	Total	Males	Females	Total	Males	Females	Total	Males	Females
5-YR RELATIVE SURVIVAL RATES									
YEAR OF DIAGNOSIS:									
1975-1977 ^a	14.2	12.7	17.9	14.3	12.8	18.1	12.5	11.4	16.2
1978-1980 ^a	15.0	13.4	18.9	15.3	13.6	18.9	13.2	10.9	19.9
1981-1983 ^a	15.6	13.7	19.5	16.0	14.0	19.9	12.5	11.3	15.9
1984-1986 ^a	15.1	13.2	18.8	15.5	13.4	19.2	12.6	11.8	14.6
1987-1989 ^a	15.4	14.0	17.6	15.8	14.2	18.2	12.3	12.1	12.7
1990-1992 ^a	15.8	14.0	18.6	16.4	14.6	19.1	11.7	10.2	14.4
1993-1995 ^a	16.4	14.2	19.4	16.8	14.5	20.0	13.8	12.3	16.7
1996-2003 ^a	17.1 ^d	14.7 ^d	20.1 ^d	17.5 ^d	15.1 ^d	20.4 ^d	13.4	11.5	16.4
5-YR PERIOD SURVIVAL RATES^{bc}									
YEAR OF DIAGNOSIS:									
1996-2003	16.6	14.0	19.7	17.0	14.5	20.0	12.9	10.8	16.1
STAGE DISTRIBUTION (%) 1996-2003^b									
All Stages									
Number of cases	180,068	100,372	79,696	148,356	81,039	67,317	19,771	12,027	7,744
Percent	100%	100%	100%	100%	100%	100%	100%	100%	100%
Localized	18	16	20	18	16	20	15	13	17
Regional	35	36	35	35	36	34	37	36	37
Distant	39	40	37	38	40	37	42	44	39
Unstaged	8	8	9	8	8	9	7	7	7
5-YR RELATIVE SURVIVAL RATES, 1996-2003^b									
AGE AT DIAGNOSIS:									
<45	24.8	22.5	27.3	27.4	26.1	28.8	15.7	11.9	20.5
45-54	19.4	15.6	24.4	20.4	16.1	25.9	14.5	12.5	18.1
55-64	19.0	16.1	23.1	19.8	16.8	23.7	14.4	11.8	18.8
65-74	16.8	14.4	19.9	17.2	14.7	20.2	11.9	10.1	14.5
75+	11.5	10.0	12.9	11.7	10.2	13.1	9.0	7.6	10.4
Under 65	19.6	16.4	23.9	20.6	17.3	24.8	14.6	12.1	18.8
65 and over	14.6	12.7	16.7	14.8	12.9	17.0	10.9	9.3	13.0
STAGE:									
All Stages	16.5	14.2	19.4	17.0	14.6	19.7	12.9	10.8	15.9
Localized	50.8	46.1	55.4	51.6	47.0	55.9	41.4	37.4	46.1
Regional	16.1	14.5	18.0	16.3	14.9	18.1	13.6	11.4	16.9
Distant	3.2	2.9	3.7	3.2	2.8	3.7	3.0	2.9	3.2
Unstaged	8.3	7.7	9.0	7.9	7.2	8.7	8.6	8.9	8.0

^a Rates are from the SEER 9 areas (San Francisco, Connecticut, Detroit, Hawaii, Iowa, New Mexico, Seattle, Utah, Atlanta).

Rates are based on follow-up of patients into 2004.

^b Rates are from the SEER 17 areas (San Francisco, Connecticut, Detroit, Hawaii, Iowa, New Mexico, Seattle, Utah, Atlanta, San Jose-Monterey, Los Angeles, Alaska Native Registry, Rural Georgia, California excluding SF/SJM/LA, Kentucky, Louisiana and New Jersey). California excluding SF/SJM/LA, Kentucky, Louisiana, and New Jersey contribute cases for diagnosis years 2000-2003. The remaining 13 SEER Areas contribute cases for the entire period 1996-2003. Rates are based on follow-up of patients into 2004.

^c Period survival provides a more up-to-date estimate of survival by piecing together the most recent conditional survival estimates from several cohorts. It is computed here using three calendar year blocks (2001-2003: 0-1 year survival), (2000-2002: 1-2 year survival), (1999-2001: 2-3 year survival), (1998-2000: 3-4 year survival), (1997-1999: 4-5 years survival).

^d The difference in rates between 1975-1977 and 1996-2003 is statistically significant ($p < .05$).

^e The standard error of the survival rate is between 5 and 10 percentage points.

^f The standard error of the survival rate is greater than 10 percentage points.

- Statistic could not be calculated due to fewer than 16 cases during the time period.

Table XV-12
LUNG AND BRONCHUS CANCER (Invasive)

SURVIVAL RATES^a

By Year of Diagnosis

All Races, Males and Females

Year of Diagnosis

	1975- 1979	1980- 1984	1985	1986	1987	1988	1989	1990	1991	1992	1993	1994	1995	1996	1997	1998	1999	2000	2001	2002	2003
Relative Survival Rates (SEER ^b)																					
1-year	36.7	38.7	39.5	40.2	39.7	40.2	40.3	40.3	41.2	41.1	40.8	41.0	41.5	41.0	41.7	41.2	42.7	42.3	41.4	41.8	42.8
2-year	21.6	22.6	22.9	23.1	22.8	23.4	23.4	23.6	24.0	24.7	24.6	24.5	25.4	25.2	25.4	25.8	26.4	26.5	26.0	26.9	
3-year	16.7	17.4	17.6	17.6	17.0	17.7	17.6	18.0	18.8	19.0	18.9	19.1	19.5	19.7	19.8	20.2	20.2	20.8	20.1		
4-year	14.4	14.9	15.1	14.8	14.8	15.2	15.2	15.3	16.0	16.2	16.2	16.3	16.9	16.7	17.0	17.3	17.4	18.0			
5-year	13.0	13.4	13.6	13.2	13.3	13.5	13.9	13.8	14.2	14.3	14.7	14.8	15.0	15.1	15.3	15.1	15.6				
6-year	12.0	12.3	12.6	12.1	12.2	12.3	12.9	12.7	13.2	13.2	13.6	13.6	13.7	13.7	13.8	13.7					
7-year	11.4	11.5	11.6	11.4	11.1	11.4	12.0	11.7	12.0	12.2	12.6	12.6	13.0	12.8	12.9						
8-year	10.8	10.7	10.9	10.6	10.5	10.6	11.1	11.0	11.2	11.3	11.7	11.9	12.2	11.9							
9-year	10.2	10.0	10.2	10.1	9.8	10.0	10.5	10.1	10.6	10.6	11.1	11.2	11.5								
11-year	9.7	9.4	9.7	9.4	9.3	9.4	10.0	9.4	10.1	10.0	10.3	10.6									
10-year	9.2	9.1	9.2	8.9	8.8	8.8	9.4	8.8	9.5	9.4	9.7										
12-year	8.9	8.6	8.8	8.4	8.4	8.2	9.0	8.3	9.0	9.0											
13-year	8.5	8.2	8.4	8.0	7.8	7.9	8.6	8.1	8.4												
14-year	8.2	7.9	8.0	7.7	7.4	7.5	8.1	7.8													
15-year	7.8	7.5	7.7	7.3	7.1	7.4	7.8														
16-year	7.6	7.1	7.2	7.1	6.9	7.0															
17-year	7.4	6.8	6.6	6.7	6.6																
18-year	7.0	6.5	6.1	6.6																	
19-year	6.8	6.1	5.8																		
20-year	6.6	5.8																			

^a Survival rates are relative rates expressed as percents.

^b Rates are from the SEER 9 areas (San Francisco, Connecticut, Detroit, Hawaii, Iowa, New Mexico, Seattle, Utah, and Atlanta).

Table XV-13
LUNG AND BRONCHUS CANCER (Invasive)

SURVIVAL RATES^a

By Year of Diagnosis

All Races, Males

Year of Diagnosis

	1975- 1979	1980- 1984	1985	1986	1987	1988	1989	1990	1991	1992	1993	1994	1995	1996	1997	1998	1999	2000	2001	2002	2003
Relative Survival Rates (SEER ^b)																					
1-year	34.7	36.8	36.8	38.2	38.2	38.2	37.9	38.1	39.0	39.1	38.2	38.7	39.3	39.2	39.3	38.3	39.6	39.9	38.2	38.3	40.2
2-year	20.0	20.8	20.9	21.0	21.7	21.9	22.0	21.4	22.1	23.2	22.4	22.1	23.5	23.5	23.5	23.2	23.3	24.2	22.6	23.6	
3-year	15.1	15.7	15.6	15.9	15.9	16.5	16.2	16.1	17.1	17.6	16.6	16.7	17.6	18.1	18.1	17.7	17.0	18.6	17.5		
4-year	12.9	13.4	13.0	13.1	13.7	13.7	13.9	13.5	14.2	14.8	14.0	14.0	15.1	15.0	15.3	15.0	14.4	16.0			
5-year	11.5	12.0	11.7	11.6	12.3	12.1	12.8	12.0	12.6	13.1	12.6	12.7	13.5	13.4	13.8	12.8	13.0				
6-year	10.6	10.9	10.8	10.6	11.3	10.8	11.9	11.0	11.7	11.9	11.6	11.5	12.2	12.2	12.3	11.4					
7-year	10.0	10.1	9.9	9.9	10.4	9.9	11.2	10.2	10.5	10.9	10.7	10.6	11.7	11.2	11.3						
8-year	9.5	9.3	9.2	9.1	9.9	9.2	10.5	9.3	9.7	9.9	9.9	9.9	10.8	10.5							
9-year	8.9	8.7	8.7	8.7	9.3	8.6	10.0	8.4	9.2	9.2	9.3	9.4	10.1								
11-year	8.4	8.2	8.3	8.1	8.7	8.1	9.5	7.7	8.8	8.6	8.8	9.0									
10-year	8.0	7.9	7.9	7.4	8.2	7.6	8.9	7.1	8.2	7.9	8.1										
12-year	7.6	7.5	7.5	6.9	7.8	7.0	8.5	6.7	7.9	7.7											
13-year	7.3	7.1	7.1	6.6	7.0	6.7	8.0	6.4	7.2												
14-year	7.0	6.8	6.9	6.3	6.7	6.4	7.5	6.3													
15-year	6.6	6.4	6.4	6.0	6.5	6.3	7.3														
16-year	6.4	6.1	6.2	5.7	6.2	6.0															
17-year	6.3	5.7	5.5	5.3	5.9																
18-year	5.9	5.5	5.0	5.1																	
19-year	5.7	5.2	4.8																		
20-year	5.5	4.8																			

^a Survival rates are relative rates expressed as percents.

^b Rates are from the SEER 9 areas (San Francisco, Connecticut, Detroit, Hawaii, Iowa, New Mexico, Seattle, Utah, and Atlanta).

Table XV-14
LUNG AND BRONCHUS CANCER (Invasive)

SURVIVAL RATES^a

By Year of Diagnosis

All Races, Females

Year of Diagnosis

	1975- 1979	1980- 1984	1985	1986	1987	1988	1989	1990	1991	1992	1993	1994	1995	1996	1997	1998	1999	2000	2001	2002	2003
Relative Survival Rates (SEER ^b)																					
1-year	41.7	42.8	44.6	43.9	42.3	43.7	44.1	43.7	44.6	44.1	44.6	44.1	44.6	43.4	44.6	44.8	46.5	45.2	45.4	46.0	45.8
2-year	25.8	26.2	26.6	27.1	24.6	25.9	25.8	27.0	26.8	27.0	27.9	27.9	27.9	27.5	27.6	29.0	30.1	29.3	30.2	30.8	
3-year	20.6	20.9	21.4	20.6	18.9	19.8	19.8	20.9	21.2	21.1	22.2	22.2	22.1	21.7	21.8	23.2	24.0	23.5	23.2		
4-year	18.1	18.1	18.9	17.8	16.6	17.6	17.3	18.0	18.6	18.3	19.2	19.4	19.3	18.9	19.0	20.3	20.9	20.4			
5-year	16.6	16.4	17.1	15.9	14.8	15.7	15.7	16.5	16.5	16.1	17.7	17.5	17.1	17.1	17.1	17.8	18.8				
6-year	15.4	15.1	16.0	14.7	13.6	14.5	14.5	15.2	15.2	15.1	16.3	16.4	15.7	15.7	15.7	16.6					
7-year	14.5	14.2	14.6	13.8	12.2	13.6	13.1	14.0	14.1	14.0	15.1	15.2	14.7	14.7	14.7						
8-year	13.7	13.3	13.8	12.9	11.5	12.8	12.0	13.3	13.3	13.2	14.2	14.4	14.0	13.7							
9-year	13.0	12.5	12.9	12.5	10.5	12.0	11.3	12.5	12.6	12.5	13.4	13.4	13.3								
11-year	12.3	11.8	12.2	11.5	10.3	11.3	10.7	11.7	11.9	11.9	12.3	12.6									
10-year	11.9	11.3	11.5	11.0	9.8	10.6	10.1	11.2	11.2	11.2	11.8										
12-year	11.4	10.7	11.0	10.6	9.3	9.9	9.7	10.5	10.6	10.8											
13-year	11.1	10.1	10.5	10.0	9.0	9.7	9.4	10.3	9.9												
14-year	10.6	9.8	9.9	9.7	8.4	9.1	9.0	9.9													
15-year	10.1	9.3	9.6	9.2	8.1	8.9	8.5														
16-year	9.8	8.9	8.8	9.0	7.8	8.4															
17-year	9.4	8.7	8.1	8.9	7.6																
18-year	9.0	8.2	7.7	8.5																	
19-year	8.7	7.6	7.4																		
20-year	8.4	7.3																			

^a Survival rates are relative rates expressed as percents.

^b Rates are from the SEER 9 areas (San Francisco, Connecticut, Detroit, Hawaii, Iowa, New Mexico, Seattle, Utah, and Atlanta).

Table XV-15
LUNG AND BRONCHUS CANCER (Invasive)

Risk of Being Diagnosed With Cancer in 10, 20 and 30 Years, Lifetime Risk of Being Diagnosed with Cancer, and
Lifetime Risk of Dying from Cancer Given Cancer Free At Current Age
Both Sexes, 2002-2004 By Race/Ethnicity

Race/ Ethnicity	Current Age	Risk of Being Diagnosed with Cancer						Risk of Dying from Cancer	
		+10 yrs Percent (95% C.I.)	+20 yrs Percent (95% C.I.)	+30 yrs Percent (95% C.I.)	Eventually Percent (95% C.I.)	Eventually Percent (95% C.I.)			
All Races	0	0.00 (0.00, 0.00)	0.00 (0.00, 0.00)	0.01 (0.00, 0.01)	6.98 (6.94, 7.02)	5.99 (5.97, 6.00)			
	10	0.00 (0.00, 0.00)	0.01 (0.00, 0.01)	0.03 (0.03, 0.03)	7.07 (7.03, 7.11)	6.07 (6.05, 6.09)			
	20	0.00 (0.00, 0.01)	0.03 (0.03, 0.03)	0.22 (0.21, 0.22)	7.10 (7.06, 7.13)	6.10 (6.08, 6.12)			
	30	0.03 (0.03, 0.03)	0.21 (0.21, 0.22)	0.94 (0.93, 0.95)	7.16 (7.12, 7.20)	6.15 (6.14, 6.17)			
	40	0.19 (0.19, 0.19)	0.93 (0.92, 0.94)	2.88 (2.86, 2.90)	7.22 (7.18, 7.26)	6.22 (6.20, 6.24)			
	50	0.76 (0.75, 0.77)	2.77 (2.75, 2.79)	5.51 (5.48, 5.54)	7.24 (7.20, 7.28)	6.25 (6.24, 6.27)			
	60	2.14 (2.12, 2.16)	5.06 (5.03, 5.10)	6.63 (6.59, 6.67)	6.90 (6.86, 6.95)	6.01 (5.99, 6.03)			
	70	3.39 (3.36, 3.42)	5.21 (5.17, 5.25)	- (- , -)	5.52 (5.48, 5.56)	4.94 (4.92, 4.95)			
80	2.61 (2.58, 2.64)	- (- , -)	- (- , -)	3.06 (3.02, 3.09)	2.94 (2.92, 2.96)				
White	0	0.00 (0.00, 0.00)	0.00 (0.00, 0.00)	0.01 (0.00, 0.01)	7.17 (7.12, 7.21)	6.13 (6.11, 6.15)			
	10	0.00 (0.00, 0.00)	0.01 (0.00, 0.01)	0.03 (0.03, 0.03)	7.25 (7.20, 7.29)	6.20 (6.18, 6.22)			
	20	0.00 (0.00, 0.01)	0.03 (0.03, 0.03)	0.21 (0.21, 0.21)	7.27 (7.23, 7.32)	6.23 (6.21, 6.25)			
	30	0.03 (0.02, 0.03)	0.21 (0.20, 0.21)	0.93 (0.91, 0.94)	7.33 (7.29, 7.38)	6.28 (6.26, 6.30)			
	40	0.18 (0.18, 0.19)	0.91 (0.90, 0.92)	2.94 (2.91, 2.96)	7.39 (7.35, 7.44)	6.34 (6.32, 6.36)			
	50	0.75 (0.74, 0.76)	2.83 (2.80, 2.85)	5.68 (5.64, 5.71)	7.41 (7.36, 7.46)	6.37 (6.35, 6.39)			
	60	2.21 (2.19, 2.23)	5.24 (5.20, 5.27)	6.82 (6.77, 6.86)	7.08 (7.03, 7.12)	6.12 (6.10, 6.14)			
	70	3.50 (3.47, 3.53)	5.33 (5.29, 5.38)	- (- , -)	5.63 (5.59, 5.68)	5.01 (4.99, 5.03)			
80	2.63 (2.60, 2.67)	- (- , -)	- (- , -)	3.06 (3.03, 3.10)	2.96 (2.94, 2.98)				
Black	0	0.00 (0.00, 0.00)	0.00 (0.00, 0.00)	0.01 (0.00, 0.01)	6.64 (6.52, 6.76)	5.50 (5.45, 5.55)			
	10	0.00 (0.00, 0.00)	0.01 (0.00, 0.01)	0.04 (0.03, 0.04)	6.80 (6.68, 6.93)	5.64 (5.59, 5.69)			
	20	0.01 (0.00, 0.01)	0.04 (0.03, 0.04)	0.33 (0.32, 0.35)	6.84 (6.72, 6.97)	5.67 (5.62, 5.73)			
	30	0.03 (0.03, 0.04)	0.34 (0.32, 0.35)	1.39 (1.35, 1.43)	6.95 (6.82, 7.08)	5.76 (5.71, 5.81)			
	40	0.31 (0.29, 0.32)	1.39 (1.35, 1.43)	3.51 (3.44, 3.59)	7.08 (6.96, 7.21)	5.88 (5.83, 5.93)			
	50	1.14 (1.11, 1.18)	3.38 (3.30, 3.46)	5.79 (5.68, 5.91)	7.14 (7.01, 7.28)	5.95 (5.89, 6.00)			
	60	2.51 (2.44, 2.58)	5.22 (5.11, 5.34)	6.51 (6.38, 6.65)	6.74 (6.60, 6.89)	5.68 (5.63, 5.74)			
	70	3.41 (3.31, 3.52)	5.04 (4.91, 5.18)	- (- , -)	5.33 (5.19, 5.47)	4.63 (4.57, 4.69)			
80	2.61 (2.50, 2.74)	- (- , -)	- (- , -)	3.08 (2.94, 3.22)	2.84 (2.78, 2.90)				

Devcan Version 6.2.0, April 2006, National Cancer Institute (<http://srab.cancer.gov/devcan/>).

Source: Incidence data are from the SEER 17 areas (San Francisco, Connecticut, Detroit, Hawaii, Iowa, New Mexico, Seattle, Utah, Atlanta, San Jose-Monterey, Los Angeles, Alaska Native Registry, Rural Georgia, California excluding SF/SJM/LA, Kentucky, Louisiana and New Jersey). Mortality data are from the NCHS public use data file for the total US.

Statistic could not be calculated.

A percent or confidence interval value of 0.00 represents a value that is below 0.005.

Table XV-15 - continued
 LUNG AND BRONCHUS CANCER (Invasive)

Risk of Being Diagnosed With Cancer in 10, 20 and 30 Years, Lifetime Risk of Being Diagnosed with Cancer, and
 Lifetime Risk of Dying from Cancer Given Cancer Free At Current Age
 Both Sexes, 2002-2004 By Race/Ethnicity

Race/ Ethnicity	Current Age	Risk of Being Diagnosed with Cancer				Risk of Dying from Cancer	
		+10 yrs Percent (95% C.I.)	+20 yrs Percent (95% C.I.)	+30 yrs Percent (95% C.I.)	Eventually Percent (95% C.I.)	Eventually Percent (95% C.I.)	
Asian/ Pacific Islander	0	0.00 (0.00, 0.00)	0.00 (0.00, 0.00)	0.00 (0.00, 0.01)	5.55 (5.39, 5.73)	4.12 (3.99, 4.25)	
	10	0.00 (0.00, 0.00)	0.00 (0.00, 0.01)	0.03 (0.03, 0.04)	5.60 (5.44, 5.78)	4.16 (4.03, 4.29)	
	20	0.00 (0.00, 0.00)	0.03 (0.03, 0.04)	0.15 (0.14, 0.16)	5.62 (5.45, 5.79)	4.17 (4.04, 4.30)	
	30	0.03 (0.02, 0.03)	0.14 (0.13, 0.16)	0.58 (0.55, 0.60)	5.64 (5.47, 5.82)	4.18 (4.05, 4.32)	
	40	0.12 (0.11, 0.13)	0.55 (0.52, 0.58)	1.66 (1.60, 1.72)	5.65 (5.48, 5.82)	4.19 (4.06, 4.32)	
	50	0.44 (0.42, 0.46)	1.56 (1.51, 1.62)	3.46 (3.36, 3.56)	5.61 (5.44, 5.79)	4.17 (4.04, 4.31)	
	60	1.16 (1.12, 1.22)	3.13 (3.03, 3.23)	4.79 (4.65, 4.93)	5.36 (5.18, 5.54)	4.04 (3.91, 4.18)	
	70	2.14 (2.06, 2.22)	3.95 (3.82, 4.09)	- (- , -)	4.57 (4.39, 4.76)	3.60 (3.47, 3.75)	
	80	2.26 (2.14, 2.39)	- (- , -)	- (- , -)	3.04 (2.85, 3.24)	2.56 (2.41, 2.73)	
American Indian/ Alaska Native ^a	0	0.00 (0.00, 0.02)	0.00 (0.00, 0.02)	0.01 (0.00, 0.03)	4.66 (4.18, 5.27)	4.13 (3.88, 4.42)	
	10	0.00 (0.00, 0.01)	0.01 (0.00, 0.02)	0.02 (0.01, 0.04)	4.74 (4.25, 5.36)	4.21 (3.95, 4.50)	
	20	0.01 (0.00, 0.02)	0.02 (0.01, 0.04)	0.10 (0.07, 0.14)	4.78 (4.28, 5.40)	4.24 (3.98, 4.54)	
	30	0.01 (0.00, 0.03)	0.09 (0.06, 0.13)	0.61 (0.51, 0.72)	4.85 (4.35, 5.49)	4.32 (4.06, 4.62)	
	40	0.08 (0.06, 0.12)	0.62 (0.52, 0.73)	1.96 (1.73, 2.21)	4.97 (4.46, 5.62)	4.44 (4.17, 4.75)	
	50	0.55 (0.46, 0.66)	1.95 (1.72, 2.21)	3.88 (3.49, 4.31)	5.09 (4.55, 5.76)	4.57 (4.28, 4.89)	
	60	1.50 (1.29, 1.74)	3.58 (3.18, 4.02)	4.71 (4.20, 5.29)	4.88 (4.32, 5.59)	4.52 (4.21, 4.86)	
	70	2.44 (2.08, 2.85)	3.77 (3.25, 4.37)	- (- , -)	3.96 (3.39, 4.73)	3.72 (3.40, 4.09)	
	80	1.88 (1.44, 2.44)	- (- , -)	- (- , -)	2.15 (1.60, 3.02)	2.29 (1.95, 2.72)	
Hispanic ^b	0	0.00 (0.00, 0.00)	0.00 (0.00, 0.00)	0.00 (0.00, 0.01)	4.38 (4.25, 4.52)	3.17 (3.10, 3.24)	
	10	0.00 (0.00, 0.00)	0.00 (0.00, 0.01)	0.02 (0.01, 0.02)	4.43 (4.30, 4.57)	3.21 (3.14, 3.28)	
	20	0.00 (0.00, 0.01)	0.02 (0.01, 0.02)	0.09 (0.08, 0.10)	4.45 (4.32, 4.59)	3.22 (3.15, 3.29)	
	30	0.01 (0.01, 0.01)	0.09 (0.08, 0.09)	0.40 (0.39, 0.42)	4.48 (4.35, 4.62)	3.25 (3.18, 3.32)	
	40	0.08 (0.07, 0.08)	0.40 (0.38, 0.41)	1.35 (1.31, 1.40)	4.51 (4.38, 4.65)	3.27 (3.20, 3.35)	
	50	0.33 (0.31, 0.35)	1.31 (1.26, 1.35)	2.94 (2.86, 3.02)	4.54 (4.40, 4.68)	3.30 (3.23, 3.37)	
	60	1.03 (0.99, 1.07)	2.75 (2.66, 2.83)	3.99 (3.88, 4.11)	4.43 (4.29, 4.58)	3.24 (3.17, 3.32)	
	70	1.93 (1.86, 2.00)	3.33 (3.21, 3.45)	- (- , -)	3.82 (3.67, 3.98)	2.89 (2.81, 2.97)	
	80	1.86 (1.75, 1.97)	- (- , -)	- (- , -)	2.51 (2.35, 2.69)	2.05 (1.96, 2.14)	

Devcan Version 6.2.0, April 2006, National Cancer Institute (<http://srab.cancer.gov/devcan/>).

Source: Incidence data are from the SEER 17 areas (San Francisco, Connecticut, Detroit, Hawaii, Iowa, New Mexico, Seattle, Utah, Atlanta, San Jose-Monterey, Los Angeles, Alaska Native Registry, Rural Georgia, California excluding SF/SJM/LA, Kentucky, Louisiana and New Jersey). Mortality data are from the NCHS public use data file for the total US.

^a Underlying incidence and mortality data for American Indian/Alaska Native are based on the CHSDA (Contract Health Service Delivery Area) counties.

^b Hispanic is not mutually exclusive from whites, blacks, Asian/Pacific Islanders, and American Indians/Alaska Natives. Underlying incidence data for Hispanics are based on NHIA and exclude cases from the Alaska Native Registry and Kentucky. Underlying mortality data for Hispanics exclude deaths from Minnesota, New Hampshire and North Dakota.

- Statistic could not be calculated.

A percent or confidence interval value of 0.00 represents a value that is below 0.005.

Table XV-15 - continued
 LUNG AND BRONCHUS CANCER (Invasive)

Risk of Being Diagnosed With Cancer in 10, 20 and 30 Years, Lifetime Risk of Being Diagnosed with Cancer, and
 Lifetime Risk of Dying from Cancer Given Cancer Free At Current Age
 Males, 2002-2004 By Race/Ethnicity

Race/ Ethnicity	Current Age	Risk of Being Diagnosed with Cancer			Risk of Dying from Cancer	
		+10 yrs Percent (95% C.I.)	+20 yrs Percent (95% C.I.)	+30 yrs Percent (95% C.I.)	Eventually Percent (95% C.I.)	Eventually Percent (95% C.I.)
All Races	0	0.00 (0.00, 0.00)	0.00 (0.00, 0.00)	0.00 (0.00, 0.01)	7.91 (7.85, 7.98)	7.12 (7.09, 7.14)
	10	0.00 (0.00, 0.00)	0.00 (0.00, 0.01)	0.03 (0.03, 0.03)	8.02 (7.96, 8.08)	7.23 (7.20, 7.26)
	20	0.00 (0.00, 0.01)	0.03 (0.03, 0.03)	0.22 (0.22, 0.23)	8.07 (8.01, 8.13)	7.27 (7.24, 7.30)
	30	0.03 (0.02, 0.03)	0.22 (0.22, 0.23)	1.04 (1.02, 1.05)	8.17 (8.11, 8.23)	7.37 (7.34, 7.40)
	40	0.20 (0.19, 0.21)	1.03 (1.02, 1.05)	3.28 (3.24, 3.31)	8.28 (8.22, 8.35)	7.48 (7.45, 7.51)
	50	0.86 (0.85, 0.88)	3.19 (3.16, 3.22)	6.40 (6.35, 6.45)	8.38 (8.32, 8.45)	7.59 (7.56, 7.62)
	60	2.52 (2.49, 2.55)	5.99 (5.94, 6.05)	7.83 (7.77, 7.90)	8.14 (8.07, 8.21)	7.42 (7.39, 7.45)
	70	4.16 (4.12, 4.21)	6.37 (6.31, 6.43)	- (- , -)	6.74 (6.67, 6.81)	6.29 (6.26, 6.33)
80	3.43 (3.38, 3.49)	- (- , -)	- (- , -)	4.00 (3.94, 4.07)	4.01 (3.98, 4.05)	
White	0	0.00 (0.00, 0.00)	0.00 (0.00, 0.00)	0.00 (0.00, 0.01)	7.98 (7.92, 8.05)	7.20 (7.17, 7.23)
	10	0.00 (0.00, 0.00)	0.00 (0.00, 0.01)	0.03 (0.03, 0.03)	8.08 (8.01, 8.14)	7.29 (7.27, 7.32)
	20	0.00 (0.00, 0.01)	0.03 (0.03, 0.03)	0.21 (0.20, 0.22)	8.12 (8.05, 8.19)	7.34 (7.31, 7.37)
	30	0.02 (0.02, 0.03)	0.21 (0.20, 0.21)	0.99 (0.97, 1.01)	8.21 (8.14, 8.28)	7.43 (7.40, 7.45)
	40	0.19 (0.18, 0.19)	0.98 (0.96, 1.00)	3.25 (3.22, 3.29)	8.32 (8.25, 8.39)	7.53 (7.50, 7.56)
	50	0.82 (0.81, 0.84)	3.17 (3.14, 3.21)	6.45 (6.39, 6.51)	8.42 (8.35, 8.49)	7.63 (7.60, 7.67)
	60	2.53 (2.50, 2.57)	6.06 (6.00, 6.12)	7.90 (7.83, 7.97)	8.19 (8.12, 8.27)	7.46 (7.42, 7.49)
	70	4.22 (4.16, 4.27)	6.41 (6.34, 6.47)	- (- , -)	6.76 (6.68, 6.83)	6.32 (6.29, 6.35)
80	3.41 (3.36, 3.47)	- (- , -)	- (- , -)	3.96 (3.89, 4.04)	4.01 (3.97, 4.04)	
Black	0	0.00 (0.00, 0.00)	0.00 (0.00, 0.00)	0.01 (0.00, 0.01)	8.09 (7.90, 8.29)	7.09 (7.01, 7.17)
	10	0.00 (0.00, 0.00)	0.01 (0.00, 0.01)	0.04 (0.03, 0.05)	8.31 (8.11, 8.51)	7.29 (7.20, 7.37)
	20	0.01 (0.00, 0.01)	0.04 (0.03, 0.05)	0.38 (0.36, 0.41)	8.38 (8.18, 8.59)	7.35 (7.26, 7.43)
	30	0.03 (0.03, 0.04)	0.39 (0.36, 0.41)	1.76 (1.70, 1.83)	8.59 (8.38, 8.80)	7.51 (7.43, 7.60)
	40	0.36 (0.34, 0.39)	1.78 (1.72, 1.85)	4.49 (4.36, 4.61)	8.83 (8.62, 9.05)	7.73 (7.64, 7.81)
	50	1.52 (1.46, 1.58)	4.40 (4.28, 4.54)	7.41 (7.22, 7.60)	9.04 (8.82, 9.27)	7.93 (7.84, 8.02)
	60	3.35 (3.23, 3.47)	6.84 (6.64, 7.04)	8.46 (8.23, 8.69)	8.73 (8.49, 8.98)	7.77 (7.67, 7.87)
	70	4.68 (4.50, 4.87)	6.86 (6.61, 7.11)	- (- , -)	7.23 (6.97, 7.50)	6.58 (6.47, 6.70)
80	3.97 (3.72, 4.22)	- (- , -)	- (- , -)	4.64 (4.35, 4.96)	4.34 (4.22, 4.47)	

Devcan Version 6.2.0, April 2006, National Cancer Institute (<http://srab.cancer.gov/devcan/>).

Source: Incidence data are from the SEER 17 areas (San Francisco, Connecticut, Detroit, Hawaii, Iowa, New Mexico, Seattle, Utah, Atlanta, San Jose-Monterey, Los Angeles, Alaska Native Registry, Rural Georgia, California excluding SF/SJM/LA, Kentucky, Louisiana and New Jersey). Mortality data are from the NCHS public use data file for the total US.

- Statistic could not be calculated.

A percent or confidence interval value of 0.00 represents a value that is below 0.005.

Table XV-15 - continued
 LUNG AND BRONCHUS CANCER (Invasive)

Risk of Being Diagnosed With Cancer in 10, 20 and 30 Years, Lifetime Risk of Being Diagnosed with Cancer, and
 Lifetime Risk of Dying from Cancer Given Cancer Free At Current Age
 Males, 2002-2004 By Race/Ethnicity

Race/ Ethnicity	Current Age	Risk of Being Diagnosed with Cancer				Risk of Dying from Cancer	
		+10 yrs Percent (95% C.I.)	+20 yrs Percent (95% C.I.)	+30 yrs Percent (95% C.I.)	Eventually Percent (95% C.I.)	Eventually Percent (95% C.I.)	
Asian/ Pacific Islander	0	0.00 (0.00, 0.00)	0.00 (0.00, 0.00)	0.00 (0.00, 0.01)	7.06 (6.80, 7.34)	5.34 (5.14, 5.55)	
	10	0.00 (0.00, 0.00)	0.00 (0.00, 0.01)	0.03 (0.02, 0.04)	7.13 (6.87, 7.41)	5.39 (5.19, 5.60)	
	20	0.00 (0.00, 0.00)	0.03 (0.02, 0.04)	0.17 (0.15, 0.19)	7.16 (6.89, 7.44)	5.41 (5.21, 5.62)	
	30	0.03 (0.02, 0.04)	0.17 (0.15, 0.18)	0.70 (0.66, 0.75)	7.20 (6.94, 7.48)	5.43 (5.23, 5.65)	
	40	0.14 (0.12, 0.15)	0.68 (0.64, 0.72)	2.14 (2.05, 2.24)	7.23 (6.96, 7.51)	5.45 (5.25, 5.67)	
	50	0.55 (0.51, 0.59)	2.04 (1.95, 2.14)	4.69 (4.52, 4.86)	7.22 (6.95, 7.51)	5.45 (5.25, 5.67)	
	60	1.56 (1.47, 1.64)	4.32 (4.16, 4.50)	6.42 (6.18, 6.66)	6.97 (6.70, 7.27)	5.33 (5.12, 5.56)	
	70	3.09 (2.94, 3.24)	5.43 (5.19, 5.67)	- (- , -)	6.04 (5.76, 6.35)	4.82 (4.60, 5.07)	
	80	3.11 (2.90, 3.34)	- (- , -)	- (- , -)	3.93 (3.63, 4.27)	3.40 (3.15, 3.67)	
American Indian/ Alaska Native ^a	0	0.00 (0.00, 0.04)	0.00 (0.00, 0.04)	0.01 (0.00, 0.06)	5.01 (4.25, 6.10)	4.58 (4.18, 5.06)	
	10	0.00 (0.00, 0.02)	0.01 (0.00, 0.05)	0.03 (0.01, 0.07)	5.11 (4.34, 6.23)	4.68 (4.27, 5.17)	
	20	0.01 (0.00, 0.04)	0.03 (0.01, 0.07)	0.11 (0.07, 0.17)	5.17 (4.39, 6.29)	4.73 (4.32, 5.23)	
	30	0.02 (0.00, 0.05)	0.10 (0.06, 0.16)	0.71 (0.56, 0.89)	5.28 (4.48, 6.43)	4.86 (4.43, 5.36)	
	40	0.09 (0.05, 0.14)	0.72 (0.56, 0.90)	2.07 (1.74, 2.45)	5.46 (4.63, 6.65)	5.04 (4.60, 5.56)	
	50	0.66 (0.51, 0.84)	2.09 (1.74, 2.48)	4.19 (3.60, 4.85)	5.65 (4.78, 6.91)	5.25 (4.79, 5.81)	
	60	1.56 (1.25, 1.92)	3.85 (3.25, 4.54)	5.18 (4.38, 6.11)	5.45 (4.53, 6.81)	5.25 (4.74, 5.87)	
	70	2.76 (2.20, 3.42)	4.36 (3.52, 5.37)	- (- , -)	4.69 (3.69, 6.23)	4.57 (4.00, 5.28)	
	80	2.43 (1.65, 3.50)	- (- , -)	- (- , -)	2.93 (1.83, 5.01)	3.14 (2.46, 4.07)	
Hispanic ^b	0	0.00 (0.00, 0.00)	0.00 (0.00, 0.00)	0.00 (0.00, 0.01)	5.32 (5.11, 5.56)	4.29 (4.17, 4.41)	
	10	0.00 (0.00, 0.00)	0.00 (0.00, 0.01)	0.02 (0.01, 0.02)	5.39 (5.17, 5.62)	4.34 (4.22, 4.47)	
	20	0.00 (0.00, 0.00)	0.01 (0.01, 0.02)	0.09 (0.08, 0.10)	5.42 (5.20, 5.66)	4.37 (4.25, 4.49)	
	30	0.01 (0.01, 0.01)	0.09 (0.08, 0.10)	0.44 (0.42, 0.47)	5.48 (5.26, 5.72)	4.42 (4.30, 4.55)	
	40	0.08 (0.07, 0.08)	0.44 (0.41, 0.47)	1.63 (1.56, 1.70)	5.54 (5.32, 5.79)	4.47 (4.35, 4.60)	
	50	0.37 (0.35, 0.40)	1.60 (1.53, 1.68)	3.70 (3.57, 3.84)	5.64 (5.41, 5.89)	4.55 (4.43, 4.69)	
	60	1.31 (1.24, 1.38)	3.55 (3.41, 3.69)	5.10 (4.91, 5.30)	5.62 (5.38, 5.88)	4.53 (4.40, 4.67)	
	70	2.59 (2.46, 2.72)	4.38 (4.18, 4.59)	- (- , -)	4.98 (4.72, 5.27)	4.11 (3.97, 4.27)	
	80	2.54 (2.35, 2.75)	- (- , -)	- (- , -)	3.39 (3.09, 3.74)	2.99 (2.81, 3.18)	

Devcan Version 6.2.0, April 2006, National Cancer Institute (<http://srab.cancer.gov/devcan/>).

Source: Incidence data are from the SEER 17 areas (San Francisco, Connecticut, Detroit, Hawaii, Iowa, New Mexico, Seattle, Utah, Atlanta, San Jose-Monterey, Los Angeles, Alaska Native Registry, Rural Georgia, California excluding SF/SJM/LA, Kentucky, Louisiana and New Jersey). Mortality data are from the NCHS public use data file for the total US.

^a Underlying incidence and mortality data for American Indian/Alaska Native are based on the CHSDA (Contract Health Service Delivery Area) counties.

^b Hispanic is not mutually exclusive from whites, blacks, Asian/Pacific Islanders, and American Indians/Alaska Natives. Underlying incidence data for Hispanics are based on NHIA and exclude cases from the Alaska Native Registry and Kentucky. Underlying mortality data for Hispanics exclude deaths from Minnesota, New Hampshire and North Dakota.

- Statistic could not be calculated.

A percent or confidence interval value of 0.00 represents a value that is below 0.005.

Table XV-15 - continued
LUNG AND BRONCHUS CANCER (Invasive)

Risk of Being Diagnosed With Cancer in 10, 20 and 30 Years, Lifetime Risk of Being Diagnosed with Cancer, and
Lifetime Risk of Dying from Cancer Given Cancer Free At Current Age
Females, 2002-2004 By Race/Ethnicity

Race/ Ethnicity	Current Age	Risk of Being Diagnosed with Cancer			Risk of Dying from Cancer	
		+10 yrs Percent (95% C.I.)	+20 yrs Percent (95% C.I.)	+30 yrs Percent (95% C.I.)	Eventually Percent (95% C.I.)	Eventually Percent (95% C.I.)
All Races	0	0.00 (0.00, 0.00)	0.00 (0.00, 0.00)	0.01 (0.00, 0.01)	6.18 (6.13, 6.23)	5.00 (4.98, 5.02)
	10	0.00 (0.00, 0.00)	0.01 (0.00, 0.01)	0.03 (0.03, 0.04)	6.25 (6.20, 6.30)	5.06 (5.04, 5.09)
	20	0.00 (0.00, 0.01)	0.03 (0.03, 0.04)	0.21 (0.21, 0.22)	6.27 (6.22, 6.32)	5.08 (5.06, 5.10)
	30	0.03 (0.03, 0.03)	0.21 (0.20, 0.21)	0.85 (0.83, 0.86)	6.29 (6.24, 6.35)	5.10 (5.08, 5.13)
	40	0.18 (0.18, 0.19)	0.82 (0.81, 0.84)	2.51 (2.48, 2.54)	6.32 (6.27, 6.37)	5.13 (5.11, 5.16)
	50	0.66 (0.65, 0.67)	2.38 (2.35, 2.41)	4.73 (4.68, 4.77)	6.27 (6.22, 6.33)	5.12 (5.09, 5.14)
	60	1.81 (1.78, 1.83)	4.27 (4.23, 4.31)	5.64 (5.59, 5.69)	5.90 (5.84, 5.95)	4.86 (4.84, 4.88)
	70	2.78 (2.74, 2.81)	4.32 (4.28, 4.37)	- (- , -)	4.61 (4.56, 4.66)	3.92 (3.90, 3.94)
80	2.08 (2.05, 2.12)	- (- , -)	- (- , -)	2.47 (2.43, 2.51)	2.29 (2.27, 2.31)	
White	0	0.00 (0.00, 0.00)	0.00 (0.00, 0.00)	0.01 (0.00, 0.01)	6.49 (6.43, 6.54)	5.20 (5.17, 5.22)
	10	0.00 (0.00, 0.00)	0.01 (0.00, 0.01)	0.03 (0.03, 0.04)	6.55 (6.49, 6.61)	5.25 (5.23, 5.28)
	20	0.00 (0.00, 0.01)	0.03 (0.03, 0.04)	0.21 (0.20, 0.22)	6.56 (6.51, 6.62)	5.27 (5.24, 5.29)
	30	0.03 (0.03, 0.03)	0.21 (0.20, 0.21)	0.86 (0.85, 0.88)	6.59 (6.53, 6.65)	5.29 (5.27, 5.31)
	40	0.18 (0.17, 0.19)	0.84 (0.83, 0.86)	2.63 (2.60, 2.67)	6.61 (6.56, 6.67)	5.32 (5.29, 5.34)
	50	0.67 (0.66, 0.69)	2.50 (2.47, 2.54)	4.99 (4.94, 5.04)	6.56 (6.50, 6.62)	5.29 (5.27, 5.32)
	60	1.92 (1.89, 1.94)	4.52 (4.47, 4.57)	5.92 (5.86, 5.98)	6.17 (6.11, 6.23)	5.02 (5.00, 5.05)
	70	2.93 (2.89, 2.97)	4.51 (4.46, 4.56)	- (- , -)	4.79 (4.73, 4.84)	4.03 (4.01, 4.05)
80	2.13 (2.10, 2.17)	- (- , -)	- (- , -)	2.51 (2.47, 2.55)	2.33 (2.31, 2.35)	
Black	0	0.00 (0.00, 0.00)	0.00 (0.00, 0.00)	0.01 (0.00, 0.01)	5.35 (5.20, 5.50)	4.12 (4.06, 4.18)
	10	0.00 (0.00, 0.00)	0.00 (0.00, 0.01)	0.04 (0.03, 0.05)	5.47 (5.32, 5.62)	4.21 (4.15, 4.27)
	20	0.00 (0.00, 0.01)	0.04 (0.03, 0.04)	0.29 (0.27, 0.31)	5.48 (5.33, 5.64)	4.23 (4.16, 4.29)
	30	0.03 (0.03, 0.04)	0.29 (0.27, 0.31)	1.06 (1.01, 1.11)	5.52 (5.37, 5.68)	4.26 (4.20, 4.32)
	40	0.26 (0.24, 0.28)	1.05 (1.00, 1.09)	2.65 (2.56, 2.74)	5.58 (5.43, 5.74)	4.31 (4.25, 4.38)
	50	0.82 (0.78, 0.86)	2.49 (2.40, 2.59)	4.41 (4.28, 4.55)	5.55 (5.39, 5.71)	4.31 (4.25, 4.37)
	60	1.83 (1.75, 1.91)	3.93 (3.79, 4.06)	4.96 (4.81, 5.12)	5.17 (5.01, 5.34)	4.07 (4.01, 4.14)
	70	2.51 (2.40, 2.63)	3.76 (3.61, 3.91)	- (- , -)	4.00 (3.84, 4.17)	3.30 (3.23, 3.37)
80	1.85 (1.72, 1.98)	- (- , -)	- (- , -)	2.22 (2.07, 2.37)	2.03 (1.96, 2.09)	

Devcan Version 6.2.0, April 2006, National Cancer Institute (<http://srab.cancer.gov/devcan/>).

Source: Incidence data are from the SEER 17 areas (San Francisco, Connecticut, Detroit, Hawaii, Iowa, New Mexico, Seattle, Utah, Atlanta, San Jose-Monterey, Los Angeles, Alaska Native Registry, Rural Georgia, California excluding SF/SJM/LA, Kentucky, Louisiana and New Jersey). Mortality data are from the NCHS public use data file for the total US.

- Statistic could not be calculated.

A percent or confidence interval value of 0.00 represents a value that is below 0.005.

Table XV-15 - continued
LUNG AND BRONCHUS CANCER (Invasive)

Risk of Being Diagnosed With Cancer in 10, 20 and 30 Years, Lifetime Risk of Being Diagnosed with Cancer, and
Lifetime Risk of Dying from Cancer Given Cancer Free At Current Age
Females, 2002-2004 By Race/Ethnicity

Race/ Ethnicity	Current Age	Risk of Being Diagnosed with Cancer				Risk of Dying from Cancer	
		+10 yrs Percent (95% C.I.)	+20 yrs Percent (95% C.I.)	+30 yrs Percent (95% C.I.)	Eventually Percent (95% C.I.)	Eventually Percent (95% C.I.)	
Asian/ Pacific Islander	0	0.00 (0.00, 0.00)	0.00 (0.00, 0.01)	0.00 (0.00, 0.01)	4.26 (4.05, 4.48)	3.10 (2.94, 3.27)	
	10	0.00 (0.00, 0.00)	0.00 (0.00, 0.01)	0.03 (0.02, 0.04)	4.29 (4.09, 4.52)	3.12 (2.96, 3.30)	
	20	0.00 (0.00, 0.01)	0.03 (0.02, 0.04)	0.13 (0.11, 0.15)	4.30 (4.09, 4.53)	3.13 (2.97, 3.30)	
	30	0.03 (0.02, 0.03)	0.13 (0.11, 0.14)	0.46 (0.43, 0.50)	4.31 (4.10, 4.54)	3.13 (2.97, 3.31)	
	40	0.10 (0.09, 0.11)	0.44 (0.40, 0.47)	1.24 (1.17, 1.31)	4.30 (4.09, 4.53)	3.13 (2.97, 3.31)	
	50	0.34 (0.31, 0.37)	1.15 (1.09, 1.22)	2.46 (2.35, 2.57)	4.25 (4.04, 4.48)	3.10 (2.94, 3.28)	
	60	0.83 (0.78, 0.89)	2.17 (2.07, 2.28)	3.45 (3.30, 3.62)	4.01 (3.80, 4.25)	2.99 (2.82, 3.17)	
	70	1.43 (1.35, 1.52)	2.80 (2.65, 2.96)	- (- , -)	3.40 (3.18, 3.64)	2.65 (2.48, 2.84)	
	80	1.64 (1.51, 1.78)	- (- , -)	- (- , -)	2.35 (2.13, 2.61)	1.94 (1.76, 2.15)	
American Indian/ Alaska Native ^a	0	0.00 (0.00, 0.04)	0.00 (0.00, 0.04)	0.00 (0.00, 0.04)	4.37 (3.75, 5.23)	3.75 (3.42, 4.14)	
	10	0.00 (0.00, 0.02)	0.00 (0.00, 0.03)	0.01 (0.00, 0.04)	4.44 (3.81, 5.31)	3.81 (3.48, 4.20)	
	20	0.00 (0.00, 0.03)	0.01 (0.00, 0.04)	0.09 (0.05, 0.15)	4.46 (3.83, 5.33)	3.83 (3.50, 4.23)	
	30	0.01 (0.00, 0.04)	0.09 (0.05, 0.15)	0.52 (0.40, 0.67)	4.50 (3.86, 5.38)	3.87 (3.54, 4.27)	
	40	0.08 (0.04, 0.14)	0.52 (0.40, 0.67)	1.86 (1.55, 2.21)	4.57 (3.92, 5.47)	3.94 (3.60, 4.34)	
	50	0.45 (0.34, 0.60)	1.83 (1.52, 2.19)	3.61 (3.09, 4.20)	4.62 (3.96, 5.55)	4.01 (3.65, 4.43)	
	60	1.46 (1.17, 1.79)	3.35 (2.83, 3.95)	4.33 (3.67, 5.09)	4.42 (3.74, 5.38)	3.94 (3.57, 4.38)	
	70	2.18 (1.73, 2.72)	3.31 (2.66, 4.08)	- (- , -)	3.41 (2.74, 4.42)	3.10 (2.73, 3.56)	
	80	1.51 (1.01, 2.19)	- (- , -)	- (- , -)	1.65 (1.09, 2.74)	1.76 (1.40, 2.26)	
Hispanic ^b	0	0.00 (0.00, 0.00)	0.00 (0.00, 0.00)	0.01 (0.00, 0.01)	3.61 (3.45, 3.79)	2.25 (2.17, 2.33)	
	10	0.00 (0.00, 0.00)	0.01 (0.00, 0.01)	0.02 (0.01, 0.02)	3.65 (3.49, 3.83)	2.27 (2.19, 2.35)	
	20	0.00 (0.00, 0.01)	0.02 (0.01, 0.02)	0.09 (0.08, 0.10)	3.66 (3.49, 3.83)	2.27 (2.19, 2.36)	
	30	0.01 (0.01, 0.02)	0.09 (0.08, 0.10)	0.37 (0.34, 0.39)	3.67 (3.50, 3.84)	2.28 (2.20, 2.36)	
	40	0.08 (0.07, 0.08)	0.36 (0.33, 0.38)	1.11 (1.05, 1.16)	3.67 (3.51, 3.85)	2.29 (2.21, 2.37)	
	50	0.28 (0.26, 0.31)	1.05 (0.99, 1.11)	2.30 (2.20, 2.40)	3.65 (3.49, 3.83)	2.28 (2.20, 2.37)	
	60	0.79 (0.74, 0.84)	2.09 (1.99, 2.19)	3.10 (2.96, 3.24)	3.49 (3.32, 3.68)	2.23 (2.14, 2.31)	
	70	1.42 (1.34, 1.51)	2.53 (2.40, 2.67)	- (- , -)	2.96 (2.79, 3.15)	2.00 (1.92, 2.09)	
	80	1.40 (1.29, 1.53)	- (- , -)	- (- , -)	1.95 (1.77, 2.16)	1.47 (1.38, 1.57)	

Devcan Version 6.2.0, April 2006, National Cancer Institute (<http://srab.cancer.gov/devcan/>).

Source: Incidence data are from the SEER 17 areas (San Francisco, Connecticut, Detroit, Hawaii, Iowa, New Mexico, Seattle, Utah, Atlanta, San Jose-Monterey, Los Angeles, Alaska Native Registry, Rural Georgia, California excluding SF/SJM/LA, Kentucky, Louisiana and New Jersey). Mortality data are from the NCHS public use data file for the total US.

^a Underlying incidence and mortality data for American Indian/Alaska Native are based on the CHSDA (Contract Health Service Delivery Area) counties.

^b Hispanic is not mutually exclusive from whites, blacks, Asian/Pacific Islanders, and American Indians/Alaska Natives. Underlying incidence data for Hispanics are based on NHIA and exclude cases from the Alaska Native Registry and Kentucky. Underlying mortality data for Hispanics exclude deaths from Minnesota, New Hampshire and North Dakota.

- Statistic could not be calculated.

A percent or confidence interval value of 0.00 represents a value that is below 0.005.

Table XV-16
LUNG AND BRONCHUS (Invasive)

SEER INCIDENCE AND U.S. MORTALITY
AGE-ADJUSTED RATES AND TRENDS^a
 By Race/Ethnicity and Sex

SEER Incidence

RACE/ETHNICITY	Rate 2000-2004 ^b			Trend 1995-2004 ^c		
	Rate per 100,000 persons			APC (%)		
	Total	Males	Females	Total	Males	Females
All Races	64.5	81.2	52.3	-1.4*	-2.2*	-0.5*
White	65.7	81.0	54.6	-1.3*	-2.1*	-0.6*
White Hispanic ^d	33.9	45.4	25.7	-2.2*	-2.9*	-1.4*
White Non-Hispanic ^d	67.2	81.2	57.1	-1.1*	-1.9*	-0.3
Black	76.6	110.6	53.7	-1.6*	-3.1*	0.6
Asian/Pacific Islander	39.4	55.1	27.7	-0.7*	-1.0*	0.3
Amer Ind/Alaska Nat ^e	44.0	53.7	36.7	-1.2	-3.4	2.1
Hispanic ^d	33.3	44.7	25.2	-2.1*	-2.6*	-1.4*

U.S. Mortality^f

RACE/ETHNICITY	Rate 2000-2004			Trend 1995-2004		
	Rate per 100,000 persons			APC (%)		
	Total	Males	Females	Total	Males	Females
All Races	54.7	73.4	41.1	-1.0*	-2.0*	0.2*
White	55.0	72.6	42.1	-0.8*	-1.9*	0.3*
White Hispanic ^d	24.4	37.1	15.2	-1.6*	-2.5*	-0.3
White Non-Hispanic ^d	57.4	75.4	44.3	-0.7*	-1.7*	0.5*
Black	62.0	95.8	39.8	-1.6*	-2.7*	0.2
Asian/Pacific Islander	26.9	38.3	18.5	-1.4*	-1.3*	-1.2*
Amer Ind/Alaska Nat						
Total U.S.	34.3	42.8	27.8	-1.4	-3.8*	1.4*
CHSDA Counties	39.9	49.6	32.7	-0.1	-2.4*	3.1*
Non-CHSDA Counties	26.8	33.9	21.3	-3.4*	-5.9*	-1.2
Hispanic ^d	23.6	36.0	14.6	-1.6*	-2.5*	-0.3

- The APC is the Annual Percent Change over the time interval.
- Statistic not shown. Rate based on less than 16 cases for the time interval. Trend based on less than 10 cases for at least one year within the time interval.
- a Rates are age-adjusted to the 2000 US Std Population (19 age groups - Census P25-1130). Trends are based on rates age-adjusted to the 2000 US Std Population (19 age groups - Census P25-1130).
- b Incidence data used in calculating the rates are from the 17 SEER areas (San Francisco, Connecticut, Detroit, Hawaii, Iowa, New Mexico, Seattle, Utah, Atlanta, San Jose-Monterey, Los Angeles, Alaska Native Registry, Rural Georgia, California excluding SF/SJM/LA, Kentucky, Louisiana and New Jersey).
- c Incidence data used in calculating the trends are from the 13 SEER areas (San Francisco, Connecticut, Detroit, Hawaii, Iowa, New Mexico, Seattle, Utah, Atlanta, San Jose-Monterey, Los Angeles, Alaska Native Registry and Rural Georgia).
- d Hispanic and Non-Hispanic are not mutually exclusive from whites, blacks, Asian/Pacific Islanders, and American Indians/Alaska Natives. Incidence data for Hispanics and Non-Hispanics are based on NHIA and exclude cases from the Alaska Native Registry and Kentucky. The 2000-2004 Hispanic and Non-Hispanic death rates exclude deaths from Minnesota, New Hampshire and North Dakota. The 1995-2004 Hispanic and Non-Hispanic mortality trends exclude deaths from Maine, Minnesota, New Hampshire, North Dakota, and Oklahoma.
- e Incidence data for American Indian/Alaska Native are based on the CHSDA (Contract Health Service Delivery Area) counties.
- f Mortality data are analyzed from a public use file provided by the National Center for Health Statistics (NCHS).
- * The APC is significantly different from zero (p<.05).

Table XV-17
LUNG AND BRONCHUS CANCER (Invasive)

AGE-ADJUSTED SEER INCIDENCE RATES^a
By Registry, Race and Sex

	All Races			Whites			Blacks		
	Total	Males	Females	Total	Males	Females	Total	Males	Females
<u>SEER INCIDENCE RATES^a, 2000-2004</u>									
REGISTRY									
Atlanta & Rural Georgia	64.4	87.4	49.0	64.6	83.2	51.9	66.9	105.1	44.2
Atlanta	64.0	86.1	49.3	64.0	82.2	51.8	66.9	103.6	45.4
Rural Georgia	73.9	111.4	45.0	75.8	103.6	52.4	69.1	128.1	31.4
California	56.8	69.0	47.9	58.4	69.1	50.6	71.7	97.4	53.4
Greater Bay Area	53.5	64.4	45.8	54.9	62.9	49.5	77.6	99.4	62.0
San Francisco-Oakland	56.0	67.6	47.6	56.7	64.6	51.2	80.4	103.2	64.2
San Jose-Monterey	48.7	58.2	42.2	51.7	59.8	46.4	61.2	81.2	45.1
Los Angeles	49.9	62.8	40.4	49.5	59.8	41.9	70.6	99.3	51.1
Greater California	61.3	73.5	52.3	63.1	74.6	54.6	69.3	94.2	50.6
Connecticut	67.9	83.0	57.3	68.6	83.1	58.5	65.0	91.2	48.0
Detroit	80.5	102.3	65.5	79.3	97.8	66.8	89.3	126.2	64.4
Hawaii	50.9	67.8	37.6	63.0	75.3	52.1	35.8	-	-
Iowa	67.0	89.5	50.8	66.7	89.0	50.7	95.1	133.8	63.9
Kentucky	101.1	137.9	74.9	101.0	137.7	74.6	108.5	148.9	81.4
Louisiana	80.3	112.3	57.4	80.2	107.3	60.5	81.6	130.4	48.9
New Jersey	66.4	82.4	55.4	67.3	81.9	57.3	70.9	100.4	51.8
New Mexico	47.2	59.5	37.7	49.5	61.7	40.0	53.2	83.3	32.5
Seattle-Puget Sound	70.1	82.6	61.0	71.5	82.8	63.5	83.6	114.7	57.7
Utah	29.6	40.3	20.9	29.6	40.4	20.9	44.9	-	-
9 SEER Areas ^b	62.9	79.0	51.3	63.7	78.2	53.3	78.1	110.5	56.4
11 SEER Areas ^b	59.2	74.2	48.3	60.1	73.4	50.5	75.8	107.0	54.8
13 SEER Areas ^b	59.3	74.4	48.3	60.1	73.5	50.5	75.7	107.2	54.4
17 SEER Areas ^b	64.5	81.2	52.3	65.7	81.0	54.6	76.6	110.6	53.7

^a Rates are per 100,000 and are age-adjusted to the 2000 US Std Population (19 age groups - Census P25-1130)

^b The SEER 9 areas are San Francisco, Connecticut, Detroit, Hawaii, Iowa, New Mexico, Seattle, Utah and Atlanta.
The SEER 11 areas comprise the SEER 9 areas plus San Jose-Monterey and Los Angeles.

The SEER 13 areas comprise the SEER 11 areas plus the Alaska Native Registry and Rural Georgia.

The SEER 17 areas comprise the SEER 13 areas plus California excluding SF/SJM/LA, Kentucky, Louisiana and New Jersey

- Statistic not shown. Rate based on less than 16 cases for the time interval.

Table XV-18
LUNG AND BRONCHUS CANCER (Invasive)

AGE-ADJUSTED SEER DEATH RATES^a
By Registry, Race and Sex

	All Races			Whites			Blacks		
	Total	Males	Females	Total	Males	Females	Total	Males	Females
<u>SEER DEATH RATES^a, 2000-2004</u>									
REGISTRY									
Atlanta & Rural Georgia	51.5	72.6	37.7	51.6	69.5	39.7	53.5	87.1	33.8
Atlanta	50.8	71.0	37.8	50.9	68.1	39.7	53.2	85.0	34.7
Rural Georgia	63.1	99.8	36.2	64.7	94.2	42.0	60.4	115.1	26.0
California	45.1	56.4	36.8	46.6	57.0	39.1	59.2	83.2	42.5
Greater Bay Area	42.1	51.7	35.3	43.7	51.2	38.6	65.9	89.9	48.8
San Francisco-Oakland	44.5	55.0	36.9	46.0	53.8	40.6	67.4	91.6	50.4
San Jose-Monterey	37.5	45.3	32.1	39.6	46.6	35.1	57.9	82.7	36.0
Los Angeles	39.6	51.9	30.7	39.4	50.0	31.6	57.7	83.1	41.0
Greater California	48.8	60.3	40.4	50.4	61.4	42.2	56.6	79.4	39.7
Connecticut	49.5	63.1	40.1	49.9	63.1	40.9	50.3	73.2	36.0
Detroit	58.3	76.1	46.2	56.9	72.7	46.4	66.4	94.1	48.0
Hawaii	35.6	49.5	24.5	44.1	54.3	34.7	26.9	-	-
Iowa	52.3	73.1	37.4	52.1	72.8	37.4	84.1	112.0	61.5
Kentucky	79.4	113.2	55.5	79.4	113.0	55.5	86.3	125.5	60.6
Louisiana	67.2	97.1	46.0	65.5	90.4	47.7	73.1	120.8	41.6
New Jersey	51.2	66.5	40.7	51.6	65.9	41.9	58.8	87.3	40.9
New Mexico	38.3	50.1	29.4	40.0	51.6	31.3	46.9	81.1	22.5
Seattle-Puget Sound	54.2	66.1	45.6	55.8	66.9	47.9	63.6	93.2	40.1
Utah	25.0	34.9	17.0	25.0	35.0	16.9	-	-	-
9 SEER Areas ^b	48.0	62.5	37.7	48.9	62.3	39.4	60.9	88.0	42.9
11 SEER Areas ^b	45.6	59.2	35.8	46.4	58.9	37.5	60.0	86.5	42.3
13 SEER Areas ^b	45.7	59.4	35.9	46.5	59.1	37.6	59.9	86.9	42.0
17 SEER Areas ^b	50.5	65.9	39.3	51.4	65.8	41.1	62.8	93.7	42.3
Total U.S.	54.7	73.4	41.1	55.0	72.6	42.1	62.0	95.8	39.8

^a NCHS public use data file for the total US. Rates are per 100,000 and are age-adjusted to the 2000 US Std Population (19 age groups - Census P25-1130).

^b The SEER 9 areas are San Francisco, Connecticut, Detroit, Hawaii, Iowa, New Mexico, Seattle, Utah and Atlanta.
The SEER 11 areas comprise the SEER 9 areas plus San Jose-Monterey and Los Angeles.
The SEER 13 areas comprise the SEER 11 areas plus the Alaska Native Registry and Rural Georgia.
The SEER 17 areas comprise the SEER 13 areas plus California excluding SF/SJM/LA, Kentucky, Louisiana and New Jersey

- Statistic not shown. Rate based on less than 16 cases for the time interval.

Table XV-19
LUNG AND BRONCHUS CANCER (Invasive)

AVERAGE ANNUAL AGE-ADJUSTED CANCER DEATH^a RATES BY STATE, ALL RACES, 2000-2004

Males and Females

State	Rate	SE	Rank	PD	State	Rate	SE	Rank	PD
TOTAL U.S.	54.7	0.06							
High Five States									
Kentucky	79.4 ^b	0.62	(01)	45.2 ^c					
West Virginia	69.5 ^b	0.80	(02)	27.1 ^c					
Arkansas	68.9 ^b	0.68	(03)	26.0 ^c					
Tennessee	68.6 ^b	0.48	(04)	25.4 ^c					
Mississippi	68.5 ^b	0.70	(05)	25.2 ^c					
Low Five States									
Idaho	44.1 ^b	0.85	(47)	-19.4 ^c					
Colorado	41.4 ^b	0.48	(48)	-24.3 ^c					
New Mexico	38.3 ^b	0.66	(49)	-30.0 ^c					
Hawaii	35.6 ^b	0.73	(50)	-34.9 ^c					
Utah	25.0 ^b	0.55	(51)	-54.3 ^c					
Alabama	63.6 ^b	0.52	(09)	16.3 ^c	Montana	52.9	1.03	(33)	-3.3
Alaska	55.9	1.85	(24)	2.2	Nebraska	49.0 ^b	0.74	(38)	-10.4 ^c
Arizona	47.2 ^b	0.42	(42)	-13.7 ^c	Nevada	61.4 ^b	0.80	(13)	12.2 ^c
Arkansas	68.9 ^b	0.68	(03)	26.0 ^c	New Hampshire	54.1	0.93	(31)	-1.1
California	45.1 ^b	0.17	(46)	-17.6 ^c	New Jersey	51.2 ^b	0.34	(35)	-6.4 ^c
Colorado	41.4 ^b	0.48	(48)	-24.3 ^c	New Mexico	38.3 ^b	0.66	(49)	-30.0 ^c
Connecticut	49.5 ^b	0.51	(37)	-9.5 ^c	New York	47.8 ^b	0.22	(41)	-12.6 ^c
Delaware	61.5 ^b	1.21	(12)	12.4 ^c	North Carolina	60.2 ^b	0.39	(17)	10.1 ^c
District of Columbia	55.0	1.41	(26)	0.5	North Dakota	45.5 ^b	1.13	(45)	-16.8 ^c
Florida	55.2	0.23	(25)	0.9	Ohio	60.9 ^b	0.32	(14)	11.3 ^c
Georgia	60.3 ^b	0.42	(16)	10.2 ^c	Oklahoma	64.0 ^b	0.59	(08)	17.0 ^c
Hawaii	35.6 ^b	0.73	(50)	-34.9 ^c	Oregon	56.2	0.56	(22)	2.7
Idaho	44.1 ^b	0.85	(47)	-19.4 ^c	Pennsylvania	54.2	0.27	(29)	-0.9
Illinois	56.1 ^b	0.30	(23)	2.6	Rhode Island	56.4	0.98	(21)	3.1
Indiana	64.5 ^b	0.46	(07)	17.9 ^c	South Carolina	60.8 ^b	0.54	(15)	11.2 ^c
Iowa	52.3 ^b	0.56	(34)	-4.4	South Dakota	48.3 ^b	1.08	(40)	-11.7 ^c
Kansas	54.1	0.62	(32)	-1.1	Tennessee	68.6 ^b	0.48	(04)	25.4 ^c
Kentucky	79.4 ^b	0.62	(01)	45.2 ^c	Texas	54.2	0.25	(30)	-0.9
Louisiana	67.2 ^b	0.56	(06)	22.9 ^c	Utah	25.0 ^b	0.55	(51)	-54.3 ^c
Maine	61.5 ^b	0.91	(11)	12.4 ^c	Vermont	50.4	1.25	(36)	-7.9 ^c
Maryland	56.9 ^b	0.47	(19)	4.0	Virginia	57.2 ^b	0.41	(18)	4.6
Massachusetts	54.4	0.40	(28)	-0.5	Washington	55.0	0.44	(27)	0.5
Michigan	56.9 ^b	0.34	(20)	4.0	West Virginia	69.5 ^b	0.80	(02)	27.1 ^c
Minnesota	46.9 ^b	0.44	(44)	-14.3 ^c	Wisconsin	49.0 ^b	0.42	(39)	-10.4 ^c
Mississippi	68.5 ^b	0.70	(05)	25.2 ^c	Wyoming	47.2 ^b	1.40	(43)	-13.7 ^c
Missouri	63.3 ^b	0.46	(10)	15.7 ^c					

^a NCHS public use data file. Rates are per 100,000 and are age-adjusted to the 2000 US Std Population (19 age groups - Census P25-1130).

^b Difference between state rate and total U.S. rate is statistically significant ($p < .0002$).

^c Absolute percent difference between state rate and total U.S. rate is 5% or more.

SE Standard error of the rate.

PD Percent difference between state rate and total U.S. rate.

Table XV-20
LUNG AND BRONCHUS CANCER (Invasive)

AVERAGE ANNUAL AGE-ADJUSTED CANCER DEATH^a RATES BY STATE, ALL RACES, 2000-2004

Males

State	Rate	SE	Rank	PD	State	Rate	SE	Rank	PD
TOTAL U.S.	73.4	0.11							
High Five States									
Kentucky	113.2 ^b	1.16	(01)	54.2 ^c					
Mississippi	104.6 ^b	1.36	(02)	42.5 ^c					
Tennessee	100.9 ^b	0.92	(03)	37.5 ^c					
Arkansas	99.7 ^b	1.27	(04)	35.8 ^c					
Louisiana	97.1 ^b	1.06	(05)	32.3 ^c					
Low Five States									
Idaho	56.2 ^b	1.44	(47)	-23.4 ^c					
Colorado	52.1 ^b	0.84	(48)	-29.0 ^c					
New Mexico	50.1 ^b	1.15	(49)	-31.7 ^c					
Hawaii	49.5 ^b	1.30	(50)	-32.6 ^c					
Utah	34.9 ^b	0.99	(51)	-52.5 ^c					
Alabama	96.3 ^b	1.01	(06)	31.2 ^c	Montana	65.4 ^b	1.73	(38)	-10.9 ^c
Alaska	69.9	3.22	(29)	-4.8	Nebraska	67.1 ^b	1.31	(35)	-8.6 ^c
Arizona	59.4 ^b	0.70	(45)	-19.1 ^c	Nevada	71.1	1.29	(28)	-3.1
Arkansas	99.7 ^b	1.27	(04)	35.8 ^c	New Hampshire	67.2 ^b	1.59	(33)	-8.4 ^c
California	56.4 ^b	0.30	(46)	-23.2 ^c	New Jersey	66.5 ^b	0.60	(36)	-9.4 ^c
Colorado	52.1 ^b	0.84	(48)	-29.0 ^c	New Mexico	50.1 ^b	1.15	(49)	-31.7 ^c
Connecticut	63.1 ^b	0.90	(40)	-14.0 ^c	New York	62.5 ^b	0.39	(42)	-14.9 ^c
Delaware	79.9	2.12	(15)	8.9 ^c	North Carolina	87.5 ^b	0.73	(12)	19.2 ^c
District of Columbia	78.3	2.67	(17)	6.7 ^c	North Dakota	62.6 ^b	1.99	(41)	-14.7 ^c
Florida	71.5 ^b	0.39	(27)	-2.6	Ohio	83.4 ^b	0.58	(14)	13.6 ^c
Georgia	88.7 ^b	0.81	(10)	20.8 ^c	Oklahoma	88.2 ^b	1.07	(11)	20.2 ^c
Hawaii	49.5 ^b	1.30	(50)	-32.6 ^c	Oregon	67.8 ^b	0.93	(31)	-7.6 ^c
Idaho	56.2 ^b	1.44	(47)	-23.4 ^c	Pennsylvania	73.9	0.49	(24)	0.7
Illinois	76.4 ^b	0.55	(19)	4.1	Rhode Island	75.6	1.76	(20)	3.0
Indiana	88.8 ^b	0.84	(09)	21.0 ^c	South Carolina	90.3 ^b	1.04	(08)	23.0 ^c
Iowa	73.1	1.01	(26)	-0.4	South Dakota	67.8	1.92	(32)	-7.6 ^c
Kansas	73.7	1.11	(25)	0.4	Tennessee	100.9 ^b	0.92	(03)	37.5 ^c
Kentucky	113.2 ^b	1.16	(01)	54.2 ^c	Texas	74.8	0.45	(22)	1.9
Louisiana	97.1 ^b	1.06	(05)	32.3 ^c	Utah	34.9 ^b	0.99	(51)	-52.5 ^c
Maine	79.6 ^b	1.59	(16)	8.4 ^c	Vermont	66.2	2.19	(37)	-9.8 ^c
Maryland	74.2	0.84	(23)	1.1	Virginia	77.7 ^b	0.75	(18)	5.9 ^c
Massachusetts	68.7 ^b	0.70	(30)	-6.4 ^c	Washington	67.2 ^b	0.75	(34)	-8.4 ^c
Michigan	75.1	0.60	(21)	2.3	West Virginia	95.2 ^b	1.45	(07)	29.7 ^c
Minnesota	60.0 ^b	0.76	(44)	-18.3 ^c	Wisconsin	65.4 ^b	0.74	(39)	-10.9 ^c
Mississippi	104.6 ^b	1.36	(02)	42.5 ^c	Wyoming	61.0 ^b	2.42	(43)	-16.9 ^c
Missouri	87.4 ^b	0.83	(13)	19.1 ^c					

^a NCHS public use data file. Rates are per 100,000 and are age-adjusted to the 2000 US Std Population (19 age groups - Census P25-1130).

^b Difference between state rate and total U.S. rate is statistically significant ($p < .0002$).

^c Absolute percent difference between state rate and total U.S. rate is 5% or more.

SE Standard error of the rate.

PD Percent difference between state rate and total U.S. rate.

Table XV-21
LUNG AND BRONCHUS CANCER (Invasive)

AVERAGE ANNUAL AGE-ADJUSTED CANCER DEATH^a RATES BY STATE, ALL RACES, 2000-2004

Females

State	Rate	SE	Rank	PD	State	Rate	SE	Rank	PD
TOTAL U.S.	41.1	0.07							
High Five States									
Kentucky	55.5 ^b	0.69	(01)	35.0 ^c					
Nevada	53.4 ^b	1.01	(02)	29.9 ^c					
West Virginia	51.0 ^b	0.91	(03)	24.1 ^c					
Maine	48.5 ^b	1.08	(04)	18.0 ^c					
Oregon	47.7 ^b	0.70	(05)	16.1 ^c					
Low Five States									
South Dakota	33.7 ^b	1.23	(47)	-18.0 ^c					
North Dakota	32.7 ^b	1.31	(48)	-20.4 ^c					
New Mexico	29.4 ^b	0.77	(49)	-28.5 ^c					
Hawaii	24.5 ^b	0.82	(50)	-40.4 ^c					
Utah	17.0 ^b	0.62	(51)	-58.6 ^c					
Alabama	40.9	0.55	(27)	-0.5	Montana	43.4	1.27	(20)	5.6 ^c
Alaska	45.0	2.23	(14)	9.5 ^c	Nebraska	35.6 ^b	0.85	(44)	-13.4 ^c
Arizona	37.7 ^b	0.50	(38)	-8.3 ^c	Nevada	53.4 ^b	1.01	(02)	29.9 ^c
Arkansas	46.5 ^b	0.75	(08)	13.1 ^c	New Hampshire	44.7	1.13	(17)	8.8 ^c
California	36.8 ^b	0.21	(43)	-10.5 ^c	New Jersey	40.7	0.40	(28)	-1.0
Colorado	33.8 ^b	0.58	(46)	-17.8 ^c	New Mexico	29.4 ^b	0.77	(49)	-28.5 ^c
Connecticut	40.1	0.62	(31)	-2.4	New York	37.7 ^b	0.26	(37)	-8.3 ^c
Delaware	47.7 ^b	1.42	(06)	16.1 ^c	North Carolina	41.0	0.42	(26)	-0.2
District of Columbia	38.6	1.54	(36)	-6.1 ^c	North Dakota	32.7 ^b	1.31	(48)	-20.4 ^c
Florida	42.3 ^b	0.27	(24)	2.9	Ohio	45.0 ^b	0.36	(15)	9.5 ^c
Georgia	40.7	0.45	(29)	-1.0	Oklahoma	46.4 ^b	0.68	(09)	12.9 ^c
Hawaii	24.5 ^b	0.82	(50)	-40.4 ^c	Oregon	47.7 ^b	0.70	(05)	16.1 ^c
Idaho	34.7 ^b	1.02	(45)	-15.6 ^c	Pennsylvania	40.4	0.31	(30)	-1.7
Illinois	42.0	0.35	(25)	2.2	Rhode Island	43.1	1.15	(21)	4.9
Indiana	47.4 ^b	0.53	(07)	15.3 ^c	South Carolina	39.7	0.58	(33)	-3.4
Iowa	37.4 ^b	0.64	(41)	-9.0 ^c	South Dakota	33.7 ^b	1.23	(47)	-18.0 ^c
Kansas	39.9	0.72	(32)	-2.9	Tennessee	45.8 ^b	0.52	(13)	11.4 ^c
Kentucky	55.5 ^b	0.69	(01)	35.0 ^c	Texas	39.1 ^b	0.28	(34)	-4.9
Louisiana	46.0 ^b	0.62	(12)	11.9 ^c	Utah	17.0 ^b	0.62	(51)	-58.6 ^c
Maine	48.5 ^b	1.08	(04)	18.0 ^c	Vermont	38.9	1.48	(35)	-5.4 ^c
Maryland	44.5 ^b	0.55	(18)	8.3 ^c	Virginia	42.7	0.47	(23)	3.9
Massachusetts	44.7 ^b	0.48	(16)	8.8 ^c	Washington	46.1 ^b	0.55	(11)	12.2 ^c
Michigan	44.0 ^b	0.40	(19)	7.1 ^c	West Virginia	51.0 ^b	0.91	(03)	24.1 ^c
Minnesota	37.5 ^b	0.53	(39)	-8.8 ^c	Wisconsin	37.4 ^b	0.49	(40)	-9.0 ^c
Mississippi	43.1	0.73	(22)	4.9	Wyoming	36.9	1.67	(42)	-10.2 ^c
Missouri	46.1 ^b	0.52	(10)	12.2 ^c					

^a NCHS public use data file. Rates are per 100,000 and are age-adjusted to the 2000 US Std Population (19 age groups - Census P25-1130).

^b Difference between state rate and total U.S. rate is statistically significant ($p < .0002$).

^c Absolute percent difference between state rate and total U.S. rate is 5% or more.

SE Standard error of the rate.

PD Percent difference between state rate and total U.S. rate.

Table XV-22
LUNG AND BRONCHUS CANCER (Invasive)

Estimated United States Cancer Prevalence Counts^a on January 1, 2004
By Race/Ethnicity, Sex and Years Since Diagnosis

Years Since Diagnosis	0 to <5	5 to <10	10 to <15	15 to <20	20 to <25	0 to <14 ^e	0 to <29 ^e	>=29 ^g	Complete ^h
Race/Sex									
All Races ^b	206,480	68,243	36,705	19,051	9,818	305,761	345,236	12,892	358,128
Males	101,519	31,773	17,638	9,160	4,783	147,917	167,413	7,467	174,880
Females	104,961	36,470	19,067	9,891	5,035	157,844	177,823	5,425	183,248
White ^b	178,187	59,851	32,779	16,905	8,674	265,677	300,763	6,351	307,114
Males	86,324	27,305	15,553	7,948	4,198	126,476	143,550	3,172	146,722
Females	91,863	32,546	17,226	8,957	4,476	139,201	157,213	3,179	160,392
Black ^b	21,464	6,451	3,102	1,692	903	30,595	34,037	610	34,647
Males	11,492	3,328	1,621	923	466	16,198	18,085	344	18,429
Females	9,972	3,123	1,481	769	437	14,397	15,952	266	16,218
Asian/Pacific Islander ^c	4,900	1,321	+	+	+	6,712	+	+	+
Males	2,691	779	+	+	+	3,749	+	+	+
Females	2,209	542	+	+	+	2,963	+	+	+
Hispanic ^d	5,693	1,636	+	+	+	8,142	+	+	+
Males	3,027	845	+	+	+	4,236	+	+	+
Females	2,666	791	+	+	+	3,906	+	+	+

Estimated prevalence percent^a on January 1, 2004, of the SEER 11 population diagnosed in the previous 10 years
By Age at Prevalence, Race/Ethnicity and Sex

Age at Prevalence	Age Specific (Crude)										Age-Adjusted ^f
	All Ages	0-9	10-19	20-29	30-39	40-49	50-59	60-69	70-79	80+	All Ages
Race/Sex											
All Races ^c	0.0792%	-	0.0002%	0.0011%	0.0044%	0.0252%	0.1052%	0.3251%	0.5545%	0.3823%	0.0858%
Males	0.0782%	-	0.0002%	0.0010%	0.0039%	0.0242%	0.1081%	0.3469%	0.6361%	0.4780%	0.0954%
Females	0.0801%	-	0.0002%	0.0013%	0.0049%	0.0262%	0.1024%	0.3056%	0.4929%	0.3298%	0.0789%
White ^c	0.0851%	-	0.0002%	0.0013%	0.0045%	0.0245%	0.1033%	0.3373%	0.5764%	0.3868%	0.0879%
Males	0.0812%	-	-	0.0010%	0.0040%	0.0221%	0.1006%	0.3466%	0.6430%	0.4744%	0.0945%
Females	0.0890%	-	-	0.0015%	0.0051%	0.0270%	0.1060%	0.3287%	0.5251%	0.3394%	0.0834%
Black ^c	0.0687%	-	-	0.0009%	0.0040%	0.0364%	0.1615%	0.3793%	0.5540%	0.3534%	0.0968%
Males	0.0765%	-	-	-	0.0039%	0.0431%	0.2087%	0.4645%	0.6748%	0.5144%	0.1218%
Females	0.0617%	-	-	-	0.0042%	0.0306%	0.1225%	0.3126%	0.4748%	0.2757%	0.0795%
Asian/Pacific Islander ^c	0.0563%	-	-	-	0.0043%	0.0195%	0.0725%	0.2138%	0.4131%	0.3543%	0.0636%
Males	0.0649%	-	-	-	0.0040%	0.0217%	0.0798%	0.2701%	0.5702%	0.4822%	0.0824%
Females	0.0483%	-	-	-	0.0047%	0.0176%	0.0661%	0.1667%	0.3004%	0.2692%	0.0497%
Hispanic ^d	0.0177%	-	-	0.0010%	0.0026%	0.0110%	0.0392%	0.1280%	0.2530%	0.1970%	0.0377%
Males	0.0179%	-	-	-	0.0025%	0.0109%	0.0424%	0.1423%	0.3339%	0.2731%	0.0464%
Females	0.0174%	-	-	0.0015%	0.0027%	0.0112%	0.0362%	0.1161%	0.1952%	0.1534%	0.0317%

^a US 2004 cancer prevalence counts are based on 2004 cancer prevalence proportions from the SEER registries and 1/1/2004 US population estimates based on the average of 2003 and 2004 population estimates from the US Bureau of the Census. Prevalence was calculated using the First Malignant Primary Only for a person.

^{b c d} Statistics based on (b) SEER 9 Areas (c) SEER 11 Areas and Rural Georgia (d) NHIA for Hispanic for SEER 11 Areas and Rural Georgia.

^e Maximum limited-duration prevalence: 29 years for 1975-2004 SEER 9 data; 14 years for 1990-2004 SEER 11 data (used to calculate prevalence for Hispanics and Asian Pacific Islanders).

^f Percentages are age-adjusted to the 2000 US Standard Population (19 age groups - Census P25-1130) by 5-year age groups.

^{g h} (g) Cases diagnosed more than 29 years ago were estimated using the completeness index method (Capocaccia et. al. 1997, Merrill et. al. 2000). (h) Complete prevalence is obtained by summing 0 to <29 and >=29.

- Statistic not shown. Statistic based on fewer than 5 cases estimated alive in SEER for the time interval.

+ Not available.

Table XV-23

LUNG AND BRONCHUS CANCER(Invasive)

Percent Distribution and Counts by Histology among Histologically Confirmed Cases, 2001-2004
Both Sexes by Race

Histology	All Races		White		Black	
	Count	Percent	Count	Percent	Count	Percent
Adenocarcinoma	61,331	38.3%	51,451	38.2%	5,712	35.3%
Adenocarcinoma, NOS (8140)	45,939	28.7%	38,333	28.4%	4,428	27.4%
Bronchio-alveolar carcinoma, non-mucinous (8252)	387	0.2%	325	0.2%	28	0.2%
Bronchio-alveolar carcinoma, mucinous (8253)	462	0.3%	384	0.3%	43	0.3%
Adenosquamous carcinoma (8560)	1,696	1.1%	1,428	1.1%	192	1.2%
Other adenocarcinomas ^a	12,847	8.0%	10,981	8.1%	1,021	6.3%
Squamous cell carcinoma	31,568	19.7%	26,412	19.6%	3,685	22.8%
Squamous cell carcinoma (8070, 8071, 8074-8077)	31,335	19.6%	26,217	19.4%	3,668	22.7%
Other specified squamous carcinomas (8050-8069, 8078-8089, 8094)	233	0.1%	195	0.1%	17	0.1%
Small cell carcinomas	20,775	13.0%	18,385	13.6%	1,614	10.0%
Small cell carcinoma, NOS (8041)	20,479	12.8%	18,129	13.4%	1,581	9.8%
Small cell, specific types (8044, 8073)	296	0.2%	256	0.2%	33	0.2%
Large cell carcinomas	7,996	5.0%	6,658	4.9%	953	5.9%
Large cell carcinoma, NOS (8012)	5,902	3.7%	4,873	3.6%	746	4.6%
Large cell specific types (8013, 8014, 8045, 8072)	2,094	1.3%	1,785	1.3%	207	1.3%
Other malignant histologies	38,406	24.0%	31,938	23.7%	4,224	26.1%
Non-small cell carcinoma, NOS (8046)	28,349	17.7%	23,511	17.4%	3,215	19.9%
Other histologies	10,057	6.3%	8,427	6.2%	1,009	6.2%
Total	160,076	100.0%	134,844	100.0%	16,188	100.0%

Source: SEER 17 areas (San Francisco, Connecticut, Detroit, Hawaii, Iowa, New Mexico, Seattle, Utah, Atlanta, San Jose-Monterey, Los Angeles, Alaska Native Registry, Rural Georgia, California excluding SF/SJM/LA, Kentucky, Louisiana and New Jersey). Percents may not sum to 100 due to rounding.

- Statistic not shown due to fewer than 16 cases during the time period.

^a Includes histologies 8141-8251, 8254-8389, 8401, 8408, 8410, 8411, 8413, 8441, 8450, 8460, 8470 8480-8482, 8490, 8500, 8503, 8504, 8510, 8520, 8525, 8530, 8571-8574, 8576, 9070, 9110.

Table XV-24

LUNG AND BRONCHUS CANCER(Invasive)

Percent Distribution and Counts by Histology among Histologically Confirmed Cases, 2001-2004
Males by Race

Histology	All Races		White		Black	
	Count	Percent	Count	Percent	Count	Percent
Adenocarcinoma	30,311	34.7%	25,108	34.6%	3,030	31.8%
Adenocarcinoma, NOS (8140)	23,334	26.7%	19,231	26.5%	2,411	25.3%
Bronchio-alveolar carcinoma, non-mucinous (8252)	137	0.2%	110	0.2%	-	-
Bronchio-alveolar carcinoma, mucinous (8253)	193	0.2%	164	0.2%	16	0.2%
Adenosquamous carcinoma (8560)	937	1.1%	783	1.1%	110	1.2%
Other adenocarcinomas ^a	5,710	6.5%	4,820	6.6%	480	5.0%
Squamous cell carcinoma	20,429	23.4%	16,840	23.2%	2,535	26.6%
Squamous cell carcinoma (8070, 8071, 8074-8077)	20,303	23.2%	16,738	23.1%	2,523	26.5%
Other specified squamous carcinomas (8050-8069, 8078-8089, 8094)	126	0.1%	102	0.1%	-	-
Small cell carcinomas	10,484	12.0%	9,160	12.6%	839	8.8%
Small cell carcinoma, NOS (8041)	10,327	11.8%	9,022	12.4%	823	8.6%
Small cell, specific types (8044, 8073)	157	0.2%	138	0.2%	16	0.2%
Large cell carcinomas	4,622	5.3%	3,808	5.2%	572	6.0%
Large cell carcinoma, NOS (8012)	3,376	3.9%	2,760	3.8%	441	4.6%
Large cell specific types (8013, 8014, 8045, 8072)	1,246	1.4%	1,048	1.4%	131	1.4%
Other malignant histologies	21,612	24.7%	17,661	24.3%	2,550	26.8%
Non-small cell carcinoma, NOS (8046)	16,116	18.4%	13,120	18.1%	1,972	20.7%
Other histologies	5,496	6.3%	4,541	6.3%	578	6.1%
Total	87,458	100.0%	72,577	100.0%	9,526	100.0%

Source: SEER 17 areas (San Francisco, Connecticut, Detroit, Hawaii, Iowa, New Mexico, Seattle, Utah, Atlanta, San Jose-Monterey, Los Angeles, Alaska Native Registry, Rural Georgia, California excluding SF/SJM/LA, Kentucky, Louisiana and New Jersey). Percents may not sum to 100 due to rounding.

- Statistic not shown due to fewer than 16 cases during the time period.

^a Includes histologies 8141-8251, 8254-8389, 8401, 8408, 8410, 8411, 8413, 8441, 8450, 8460, 8470 8480-8482, 8490, 8500, 8503, 8504, 8510, 8520, 8525, 8530, 8571-8574, 8576, 9070, 9110.

Table XV-25

LUNG AND BRONCHUS CANCER(Invasive)

Percent Distribution and Counts by Histology among Histologically Confirmed Cases, 2001-2004
Females by Race

Histology	All Races		White		Black	
	Count	Percent	Count	Percent	Count	Percent
Adenocarcinoma	31,020	42.7%	26,343	42.3%	2,682	40.3%
Adenocarcinoma, NOS (8140)	22,605	31.1%	19,102	30.7%	2,017	30.3%
Bronchio-alveolar carcinoma, non-mucinous (8252)	250	0.3%	215	0.3%	-	-
Bronchio-alveolar carcinoma, mucinous (8253)	269	0.4%	220	0.4%	27	0.4%
Adenosquamous carcinoma (8560)	759	1.0%	645	1.0%	82	1.2%
Other adenocarcinomas ^a	7,137	9.8%	6,161	9.9%	541	8.1%
Squamous cell carcinoma	11,139	15.3%	9,572	15.4%	1,150	17.3%
Squamous cell carcinoma (8070, 8071, 8074-8077)	11,032	15.2%	9,479	15.2%	1,145	17.2%
Other specified squamous carcinomas (8050-8069, 8078-8089, 8094)	107	0.1%	93	0.1%	-	-
Small cell carcinomas	10,291	14.2%	9,225	14.8%	775	11.6%
Small cell carcinoma, NOS (8041)	10,152	14.0%	9,107	14.6%	758	11.4%
Small cell, specific types (8044, 8073)	139	0.2%	118	0.2%	17	0.3%
Large cell carcinomas	3,374	4.6%	2,850	4.6%	381	5.7%
Large cell carcinoma, NOS (8012)	2,526	3.5%	2,113	3.4%	305	4.6%
Large cell specific types (8013, 8014, 8045, 8072)	848	1.2%	737	1.2%	76	1.1%
Other malignant histologies	16,794	23.1%	14,277	22.9%	1,674	25.1%
Non-small cell carcinoma, NOS (8046)	12,233	16.8%	10,391	16.7%	1,243	18.7%
Other histologies	4,561	6.3%	3,886	6.2%	431	6.5%
Total	72,618	100.0%	62,267	100.0%	6,662	100.0%

Source: SEER 17 areas (San Francisco, Connecticut, Detroit, Hawaii, Iowa, New Mexico, Seattle, Utah, Atlanta, San Jose-Monterey, Los Angeles, Alaska Native Registry, Rural Georgia, California excluding SF/SJM/LA, Kentucky, Louisiana and New Jersey). Percents may not sum to 100 due to rounding.

- Statistic not shown due to fewer than 16 cases during the time period.

^a Includes histologies 8141-8251, 8254-8389, 8401, 8408, 8410, 8411, 8413, 8441, 8450, 8460, 8470 8480-8482, 8490, 8500, 8503, 8504, 8510, 8520, 8525, 8530, 8571-8574, 8576, 9070, 9110.

SEER Incidence, Delay Adjusted Incidence and US Death Rates^a Lung and Bronchus Cancer, by Race and Sex

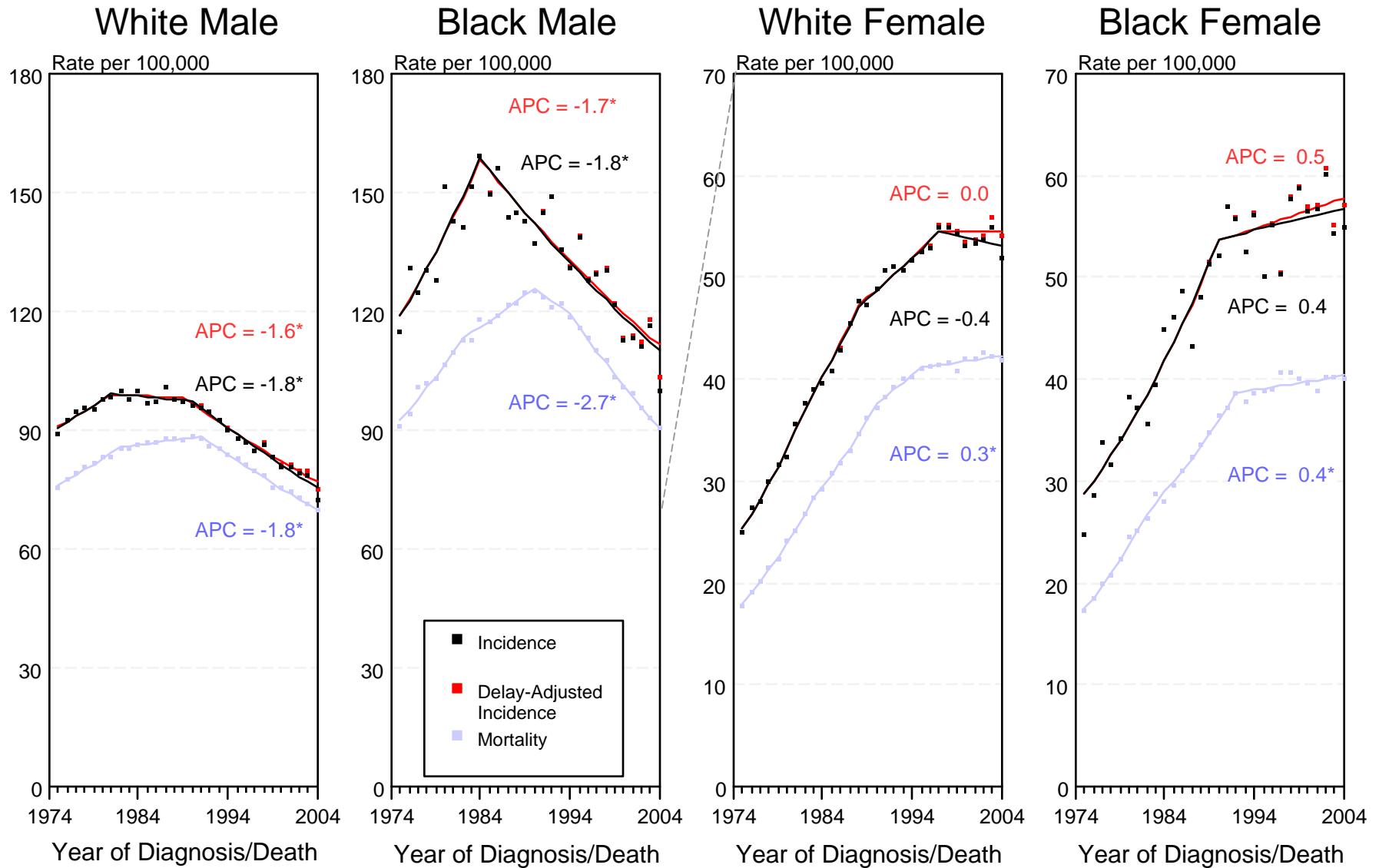


Figure XV-1

^a Source: SEER 9 areas and NCHS public use data file for the total US. Rates are age-adjusted to the 2000 US Std Population (19 age groups - Census P25-1103). Regression lines and APCs are calculated using the Joinpoint Regression Program Version 3.0, April 2005, National Cancer Institute.

The APC is the Annual Percent Change for the regression line segments. The APC shown on the graph is for the most recent trend.

* The APC is significantly different from zero ($p < 0.05$).

SEER Incidence, Delay Adjusted Incidence and US Death Rates^a Lung and Bronchus Cancer, Under 65 Years of Age, by Race and Sex

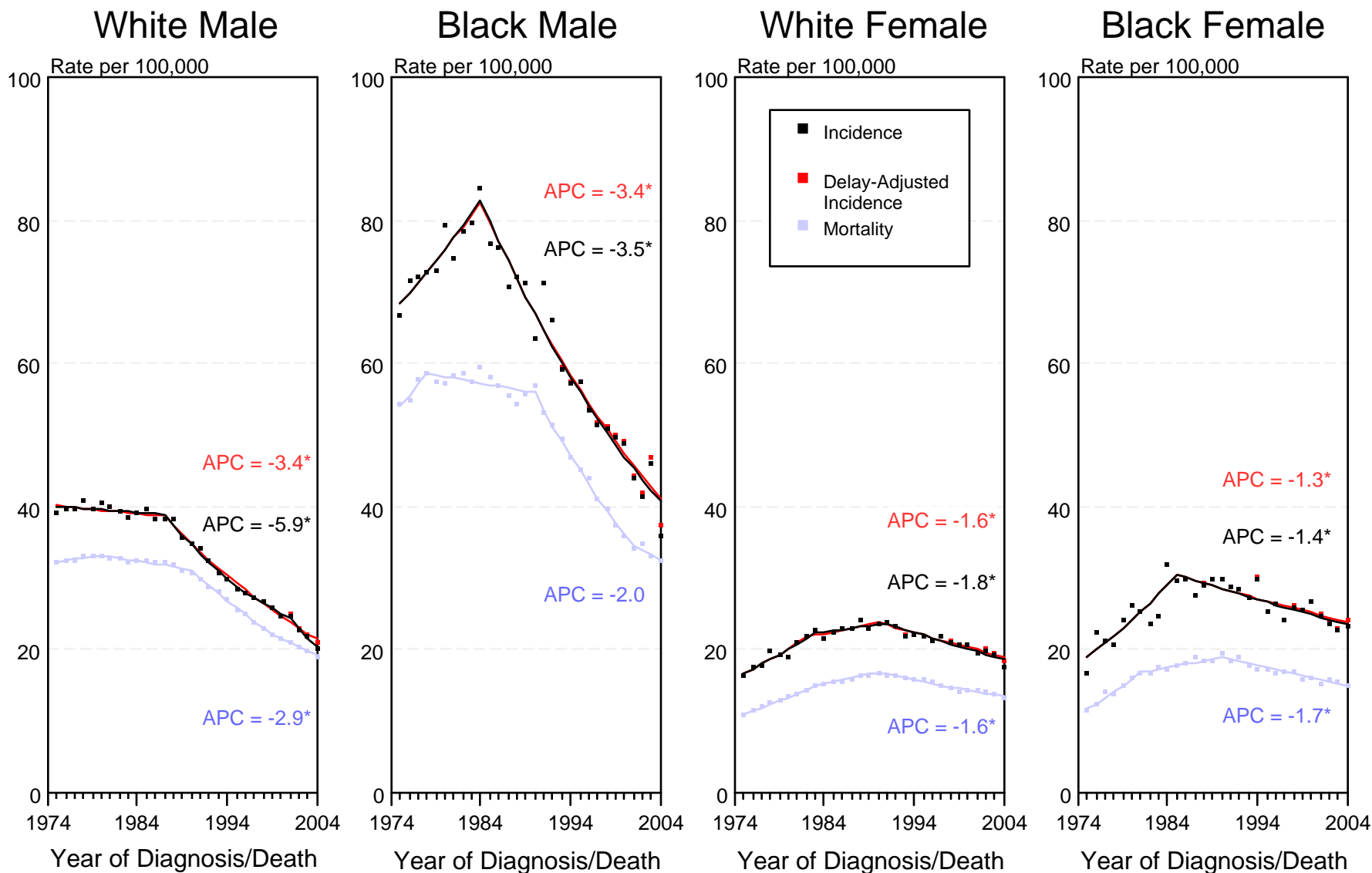


Figure XV-2

^a Source: SEER 9 areas and NCHS public use data file for the total US. Rates are age-adjusted to the 2000 US Std Population (19 age groups - Census P25-1103). Regression lines and APCs are calculated using the Joinpoint Regression Program Version 3.0, April 2005, National Cancer Institute.

The APC is the Annual Percent Change for the regression line segments. The APC shown on the graph is for the most recent trend.

* The APC is significantly different from zero ($p < 0.05$).

SEER Incidence, Delay Adjusted Incidence and US Death Rates^a Lung and Bronchus Cancer, Ages 65 and Over, by Race and Sex

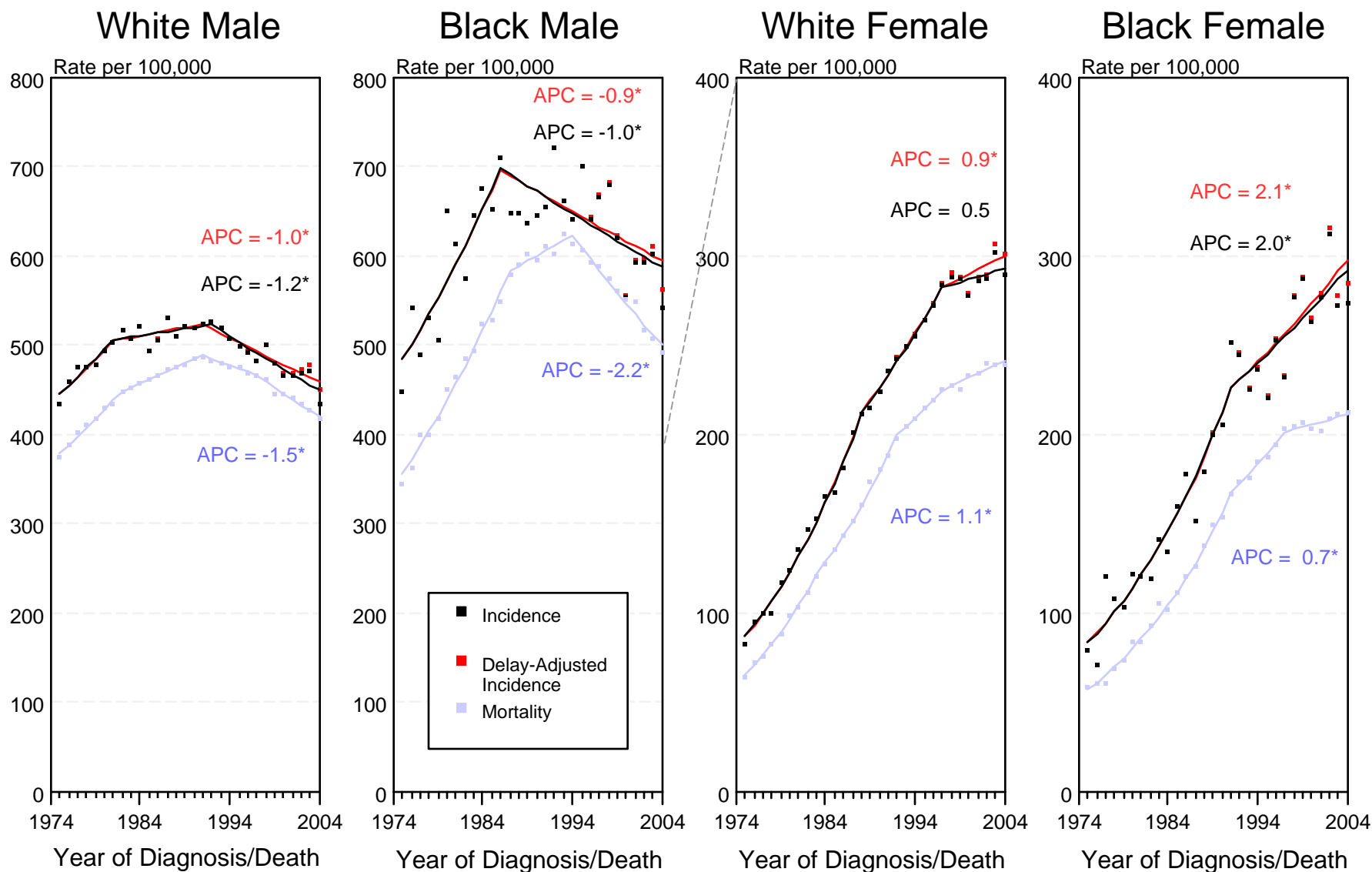


Figure XV-3

^a Source: SEER 9 areas and NCHS public use data file for the total US. Rates are age-adjusted to the 2000 US Std Population (19 age groups - Census P25-1103). Regression lines and APCs are calculated using the Joinpoint Regression Program Version 3.0, April 2005, National Cancer Institute.

The APC is the Annual Percent Change for the regression line segments. The APC shown on the graph is for the most recent trend.

* The APC is significantly different from zero ($p < 0.05$).

SEER Incidence and US Death Rates^a Lung and Bronchus Cancer, Both Sexes

Joinpoint Analyses for Whites and Blacks from 1975-2004 and for Asian/Pacific Islanders, American Indians/Alaska Natives and Hispanics from 1992-2004

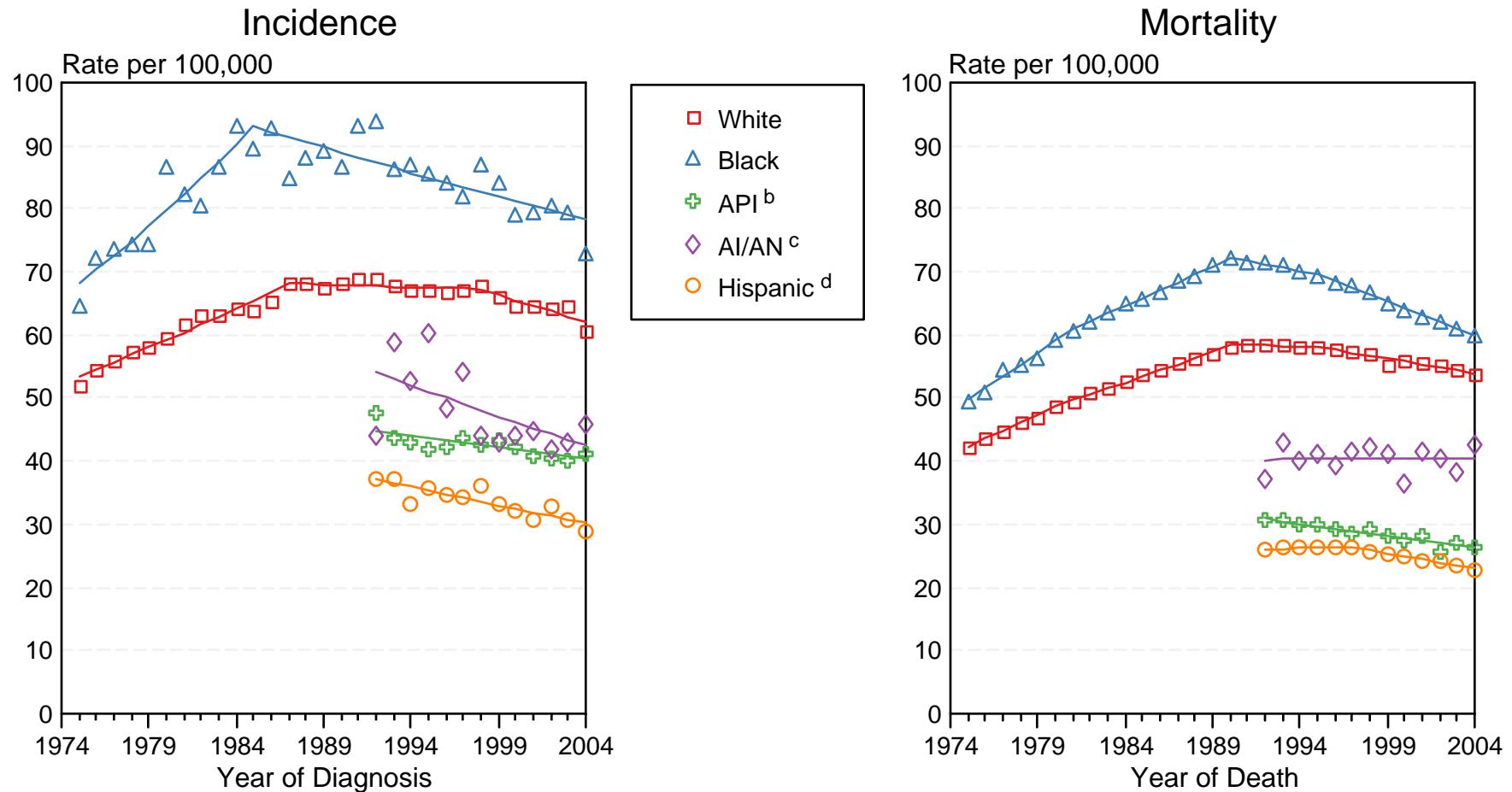


Figure XV-4

Source: Incidence data for whites and blacks are from the SEER 9 areas (San Francisco, Connecticut, Detroit, Hawaii, Iowa, New Mexico, Seattle, Utah, Atlanta). Incidence data for Asian/Pacific Islanders, American Indians/Alaska Natives and Hispanics are from the SEER 13 Areas (SEER 9 Areas, San Jose-Monterey, Los Angeles, Alaska Native Registry and Rural Georgia). Mortality data are from NCHS public use data file for the total US.

^a Rates are age-adjusted to the 2000 US Std Population (19 age groups - Census P25-1103).

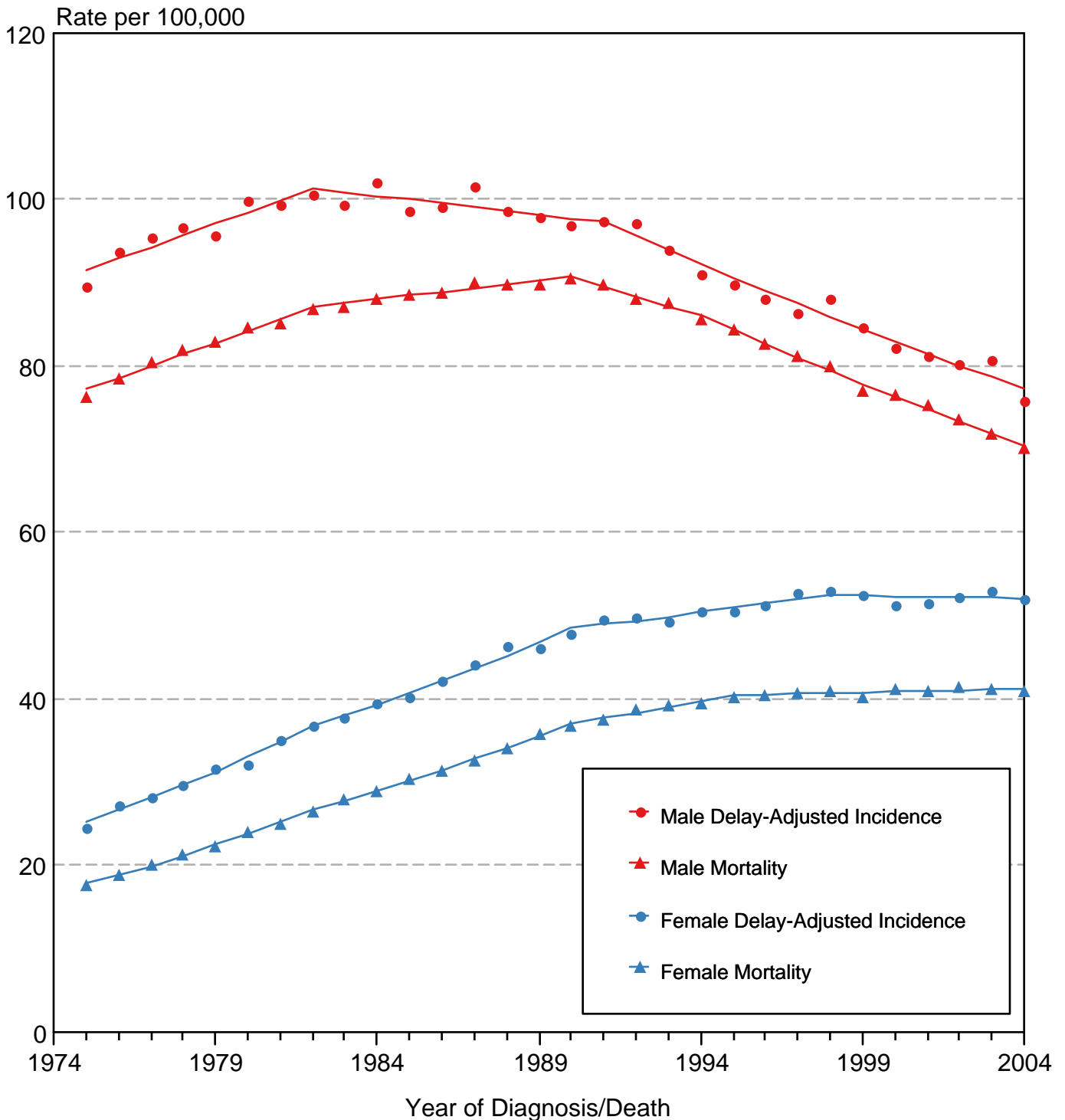
Regression lines are calculated using the Joinpoint Regression Program Version 3.0, April 2005, National Cancer Institute.

^b API = Asian/Pacific Islander.

^c AI/AN = American Indian/Alaska Native. Rates for American Indian/Alaska Native are based on the CHSDA(Contract Health Service Delivery Area) counties.

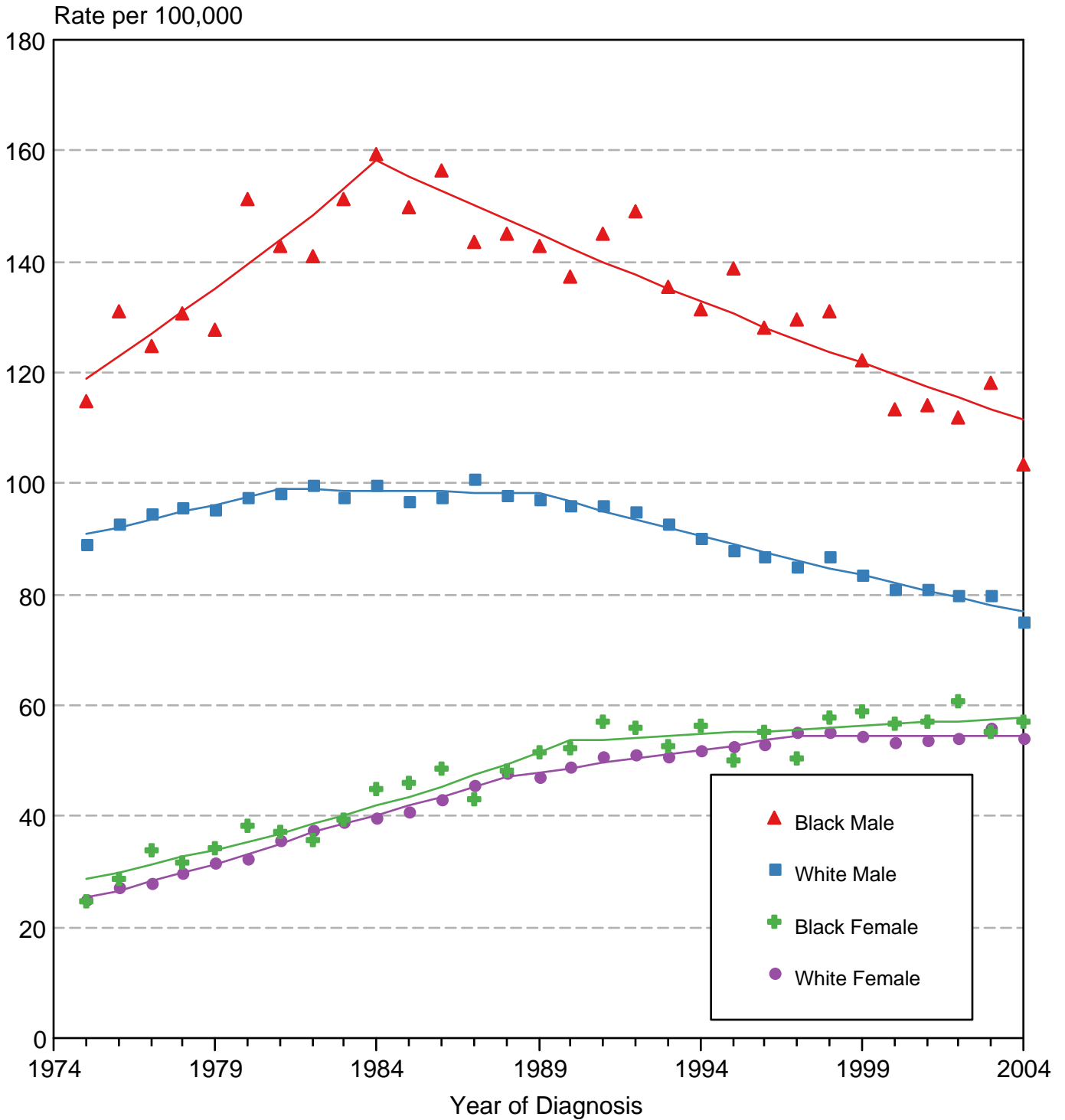
^d Hispanic is not mutually exclusive from whites, blacks, Asian/Pacific Islanders, and American Indians/Alaska Natives. Incidence data for Hispanics are based on NHIA and exclude cases from the Alaska Native Registry. Mortality data for Hispanics exclude cases from Connecticut, Maine, Maryland, Minnesota, New Hampshire, New York, North Dakota, Oklahoma, and Vermont.

Cancer of the Lung & Bronchus SEER Delay-Adjusted Incidence & US Death Rates, 1975-2004, All Races, By Sex



Source: SEER 9 areas and NCHS public use data file for the total US.
Rates are age-adjusted to the 2000 US Std Population (19 age groups - Census P25-1103).
Regression lines are calculated using the Joinpoint Regression Program Version 3.0, April 2005, National Cancer Institute.

Cancer of the Lung & Bronchus SEER Delay-Adjusted Incidence, 1975-2004 By Sex and Race



Source: SEER 9 areas. Rates are age-adjusted to the 2000 US Std Population (19 age groups - Census P25-1103). Regression lines are calculated using the Joinpoint Regression Program Version 3.0, April 2005, National Cancer Institute.