

Table 2.1  
All Cancer Sites (Invasive)

Trends in SEER Incidence<sup>ab</sup> and U.S. Mortality<sup>c</sup> Using the Joinpoint Regression Program,  
1975-2009 With up to Five Joinpoints, 1992-2009 With up to Three Joinpoints,  
Both Sexes by Race/Ethnicity

	JP Trend 1		JP Trend 2		JP Trend 3		JP Trend 4		JP Trend 5		JP Trend 6		AAPC <sup>d</sup>	
	Years	APC	Years	APC	Years	APC	Years	APC	Years	APC	Years	APC	2000-09	2005-09
<u>SEER 9 Delay-Adjusted Incidence<sup>a</sup>, 1975-2009</u>														
All Races	1975-89	1.2*	1989-92	2.8	1992-95	-2.4	1995-98	1.1	1998-09	-0.3*			-0.3*	-0.3*
White	1975-82	0.9*	1982-92	1.8*	1992-95	-2.1	1995-98	1.4	1998-09	-0.3*			-0.3*	-0.3*
Black	1975-84	1.6*	1984-89	0.4	1989-92	4.1*	1992-05	-0.8*	2005-09	0.4			-0.3	0.4
<u>SEER 13 Delay-Adjusted Incidence<sup>b</sup>, 1992-2009</u>														
All Races	1992-94	-3.1*	1994-99	0.4	1999-05	-0.7*	2005-09	0.1					-0.4	0.1
White	1992-94	-3.2*	1994-99	0.5	1999-09	-0.4*							-0.4*	-0.4*
Black	1992-09	-0.6*											-0.6*	-0.6*
<u>SEER 9 Observed Incidence<sup>a</sup>, 1975-2009</u>														
All Races	1975-89	1.2*	1989-92	2.8	1992-95	-2.5	1995-98	1.2	1998-09	-0.5*			-0.5*	-0.5*
White	1975-82	0.9*	1982-92	1.8*	1992-95	-2.1	1995-99	1.1	1999-09	-0.6*			-0.6*	-0.6*
Black	1975-84	1.6*	1984-89	0.4	1989-92	3.9	1992-09	-0.7*					-0.7*	-0.7*
<u>SEER 13 Observed Incidence<sup>b</sup>, 1992-2009</u>														
All Races	1992-94	-3.1*	1994-99	0.3	1999-09	-0.6*							-0.6*	-0.6*
White	1992-94	-3.3*	1994-99	0.6	1999-09	-0.6*							-0.6*	-0.6*
White NH <sup>ef</sup>	1992-94	-3.2*	1994-99	0.7	1999-09	-0.5*							-0.5*	-0.5*
Black	1992-09	-0.7*											-0.7*	-0.7*
Black NH <sup>ef</sup>	1992-09	-0.7*											-0.7*	-0.7*
API <sup>e</sup>	1992-09	-0.3*											-0.3*	-0.3*
AI/AN <sup>eg</sup>	1992-09	0.2											0.2	0.2
Hispanic <sup>f</sup>	1992-09	-0.4*											-0.4*	-0.4*
<u>U.S. Cancer Mortality<sup>c</sup>, 1975-2009</u>														
All Races	1975-84	0.5*	1984-91	0.3*	1991-94	-0.5	1994-98	-1.3*	1998-01	-0.8	2001-09	-1.6*	-1.5*	-1.6*
White	1975-90	0.4*	1990-94	-0.3	1994-98	-1.2*	1998-01	-0.6	2001-09	-1.5*			-1.4*	-1.5*
Black	1975-83	1.3*	1983-91	0.7*	1991-95	-0.8*	1995-02	-1.6*	2002-09	-2.1*			-2.0*	-2.1*
<u>U.S. Cancer Mortality<sup>c</sup>, 1992-2009</u>														
All Races	1992-01	-1.0*	2001-09	-1.6*									-1.5*	-1.6*
White	1992-01	-0.9*	2001-09	-1.5*									-1.4*	-1.5*
White NH <sup>ef</sup>	1992-94	-0.1	1994-97	-1.4*	1997-00	-0.4	2000-09	-1.3*					-1.3*	-1.3*
Black	1992-94	-0.4	1994-02	-1.6*	2002-09	-2.1*							-2.0*	-2.1*
Black NH <sup>ef</sup>	1992-02	-1.3*	2002-09	-2.0*									-1.9*	-2.0*
API <sup>e</sup>	1992-09	-1.5*											-1.5*	-1.5*
AI/AN <sup>eg</sup>	1992-09	-0.2											-0.2	-0.2
Hispanic <sup>f</sup>	1992-00	-0.4*	2000-09	-1.9*									-1.9*	-1.9*

Joinpoint Regression Program Version 3.5, April 2011, National Cancer Institute. (<http://surveillance.cancer.gov/joinpoint/>).

The APC is the Annual Percent Change based on rates age-adjusted to the 2000 US Std Population (19 age groups - Census P25-1130).

Trends are from the SEER 9 areas (San Francisco, Connecticut, Detroit, Hawaii, Iowa, New Mexico, Seattle, Utah, and Atlanta).

Trends are from the SEER 13 areas (SEER 9 Areas, Los Angeles, San Jose-Monterey, Rural Georgia, and the Alaska Native Registry).

Trends are from US Mortality Files, National Center for Health Statistics, Centers for Disease Control and Prevention.

The AAPC is the Average Annual Percent Change and is based on the APCs calculated by Joinpoint.

API - Asian/Pacific Islander, AI/AN - American Indian/Alaska Native, NH - Non-Hispanic

Hispanic and Non-Hispanic are not mutually exclusive from whites, blacks, Asian/Pacific Islanders, and American Indians/Alaska

Natives. Incidence data for Hispanics and Non-Hispanics are based on NHIA and exclude cases from the Alaska Native Registry.

The Hispanic and Non-Hispanic mortality trends exclude deaths from CT, DC, ME, MD, MN, NH, NY, ND, SC, OK and VT.

Data for American Indian/Alaska Native are based on the CHSDA (Contract Health Service Delivery Area) counties.

\* The APC/AAPC is significantly different from zero ( $p < .05$ ).

- Joinpoint regression line analysis could not be performed on data series.

Table 2.2  
All Cancer Sites (Invasive)

Trends in SEER Incidence<sup>ab</sup> and U.S. Mortality<sup>c</sup> Using the Joinpoint Regression Program,  
1975-2009 With up to Five Joinpoints, 1992-2009 With up to Three Joinpoints,  
Males by Race/Ethnicity

	JP Trend 1		JP Trend 2		JP Trend 3		JP Trend 4		JP Trend 5		JP Trend 6		AAPC <sup>d</sup>	
	Years	APC	Years	APC	Years	APC	Years	APC	Years	APC	Years	APC	2000-09	2005-09
<u>SEER 9 Delay-Adjusted Incidence<sup>a</sup>, 1975-2009</u>														
All Races	1975-89	1.3*	1989-92	5.2*	1992-95	-4.8*	1995-00	0.4	2000-09	-0.8*			-0.8*	-0.8*
White	1975-89	1.4*	1989-92	5.0*	1992-95	-5.1*	1995-00	0.7	2000-09	-0.8*			-0.8*	-0.8*
Black	1975-81	2.8*	1981-89	0.6	1989-92	7.5*	1992-96	-2.6*	1996-09	-1.0*			-1.0*	-1.0*
<u>SEER 13 Delay-Adjusted Incidence<sup>b</sup>, 1992-2009</u>														
All Races	1992-94	-5.6*	1994-09	-0.6*									-0.6*	-0.6*
White	1992-94	-6.7*	1994-01	0.0	2001-09	-0.8*							-0.7*	-0.8*
Black	1992-09	-1.3*											-1.3*	-1.3*
<u>SEER 9 Observed Incidence<sup>a</sup>, 1975-2009</u>														
All Races	1975-89	1.3*	1989-92	5.2*	1992-95	-4.8*	1995-00	0.5	2000-09	-0.9*			-0.9*	-0.9*
White	1975-89	1.4*	1989-92	5.0*	1992-95	-5.2*	1995-00	0.7	2000-09	-1.0*			-1.0*	-1.0*
Black	1975-81	2.8*	1981-89	0.6	1989-92	7.4*	1992-96	-2.6*	1996-09	-1.2*			-1.2*	-1.2*
<u>SEER 13 Observed Incidence<sup>b</sup>, 1992-2009</u>														
All Races	1992-95	-4.5*	1995-00	0.2	2000-09	-1.0*							-1.0*	-1.0*
White	1992-94	-6.7*	1994-01	0.0	2001-09	-1.1*							-0.9*	-1.1*
White NH <sup>ef</sup>	1992-94	-6.8*	1994-01	0.1	2001-09	-0.9*							-0.8*	-0.9*
Black	1992-09	-1.4*											-1.4*	-1.4*
Black NH <sup>ef</sup>	1992-09	-1.4*											-1.4*	-1.4*
API <sup>e</sup>	1992-96	-2.8*	1996-00	0.3	2000-07	-0.8*	2007-09	-3.6					-1.4*	-2.2*
AI/AN <sup>eg</sup>	1992-09	-0.3											-0.3	-0.3
Hispanic <sup>f</sup>	1992-04	-0.7*	2004-09	-1.6*									-1.2*	-1.6*
<u>U.S. Cancer Mortality<sup>c</sup>, 1975-2009</u>														
All Races	1975-79	1.0*	1979-90	0.3*	1990-93	-0.5	1993-01	-1.5*	2001-09	-1.8*			-1.8*	-1.8*
White	1975-79	0.9*	1979-90	0.3*	1990-93	-0.4	1993-02	-1.4*	2002-09	-1.7*			-1.6*	-1.7*
Black	1975-82	1.8*	1982-90	1.1*	1990-95	-0.8*	1995-09	-2.3*					-2.3*	-2.3*
<u>U.S. Cancer Mortality<sup>c</sup>, 1992-2009</u>														
All Races	1992-01	-1.4*	2001-09	-1.8*									-1.8*	-1.8*
White	1992-01	-1.3*	2001-09	-1.7*									-1.6*	-1.7*
White NH <sup>ef</sup>	1992-02	-1.3*	2002-09	-1.6*									-1.5*	-1.6*
Black	1992-95	-0.9	1995-09	-2.3*									-2.3*	-2.3*
Black NH <sup>ef</sup>	1992-09	-2.0*											-2.0*	-2.0*
API <sup>e</sup>	1992-09	-1.7*											-1.7*	-1.7*
AI/AN <sup>eg</sup>	1992-09	-0.4*											-0.4*	-0.4*
Hispanic <sup>f</sup>	1992-98	-0.1	1998-09	-2.3*									-2.3*	-2.3*

Joinpoint Regression Program Version 3.5, April 2011, National Cancer Institute. (<http://surveillance.cancer.gov/joinpoint/>).

The APC is the Annual Percent Change based on rates age-adjusted to the 2000 US Std Population (19 age groups - Census P25-1130).

Trends are from the SEER 9 areas (San Francisco, Connecticut, Detroit, Hawaii, Iowa, New Mexico, Seattle, Utah, and Atlanta).

Trends are from the SEER 13 areas (SEER 9 Areas, Los Angeles, San Jose-Monterey, Rural Georgia, and the Alaska Native Registry).

Trends are from US Mortality Files, National Center for Health Statistics, Centers for Disease Control and Prevention.

The AAPC is the Average Annual Percent Change and is based on the APCs calculated by Joinpoint.

API - Asian/Pacific Islander, AI/AN - American Indian/Alaska Native, NH - Non-Hispanic

Hispanic and Non-Hispanic are not mutually exclusive from whites, blacks, Asian/Pacific Islanders, and American Indians/Alaska

Natives. Incidence data for Hispanics and Non-Hispanics are based on NHIA and exclude cases from the Alaska Native Registry.

The Hispanic and Non-Hispanic mortality trends exclude deaths from CT, DC, ME, MD, MN, NH, NY, ND, SC, OK and VT.

Data for American Indian/Alaska Native are based on the CHSDA (Contract Health Service Delivery Area) counties.

\* The APC/AAPC is significantly different from zero ( $p < .05$ ).

- Joinpoint regression line analysis could not be performed on data series.

Table 2.3  
All Cancer Sites (Invasive)

Trends in SEER Incidence<sup>ab</sup> and U.S. Mortality<sup>c</sup> Using the Joinpoint Regression Program,  
1975-2009 With up to Five Joinpoints, 1992-2009 With up to Three Joinpoints,  
Females by Race/Ethnicity

	JP Trend 1		JP Trend 2		JP Trend 3		JP Trend 4		JP Trend 5		JP Trend 6		AAPC <sup>d</sup>	
	Years	APC	Years	APC	Years	APC	Years	APC	Years	APC	Years	APC	2000-09	2005-09
<u>SEER 9 Delay-Adjusted Incidence<sup>a</sup>, 1975-2009</u>														
All Races	1975-79	-0.3	1979-87	1.6*	1987-95	0.1	1995-98	1.4	1998-06	-0.5*	2006-09	1.1	0.0	0.7
White	1975-79	-0.2	1979-87	1.7*	1987-95	0.1	1995-98	1.8	1998-05	-0.5*	2005-09	0.5	0.0	0.5
Black	1975-90	1.1*	1990-09	0.2*									0.2*	0.2*
<u>SEER 13 Delay-Adjusted Incidence<sup>b</sup>, 1992-2009</u>														
All Races	1992-98	0.8*	1998-06	-0.5*	2006-09	1.0							0.0	0.6
White	1992-94	-0.3	1994-98	1.5*	1998-04	-0.7*	2004-09	0.4					-0.1	0.4
Black	1992-09	0.1											0.1	0.1
<u>SEER 9 Observed Incidence<sup>a</sup>, 1975-2009</u>														
All Races	1975-79	-0.3	1979-87	1.6*	1987-95	0.1	1995-98	1.5	1998-05	-0.6*	2005-09	0.4	-0.2	0.4
White	1975-79	-0.2	1979-87	1.7*	1987-95	0.1	1995-98	1.5	1998-09	-0.4*			-0.4*	-0.4*
Black	1975-91	1.1*	1991-09	0.0									0.0	0.0
<u>SEER 13 Observed Incidence<sup>b</sup>, 1992-2009</u>														
All Races	1992-94	-0.4	1994-98	1.2	1998-04	-0.8*	2004-09	0.2					-0.2	0.2
White	1992-94	-0.3	1994-98	1.4*	1998-04	-0.8*	2004-09	0.0					-0.3*	0.0
White NH <sup>ef</sup>	1992-94	-0.1	1994-98	1.6*	1998-04	-0.7*	2004-09	0.1					-0.3	0.1
Black	1992-09	0.0											0.0	0.0
Black NH <sup>ef</sup>	1992-09	0.0											0.0	0.0
API <sup>e</sup>	1992-09	0.3*											0.3*	0.3*
AI/AN <sup>eg</sup>	1992-09	0.8*											0.8*	0.8*
Hispanic <sup>f</sup>	1992-09	0.1											0.1	0.1
<u>U.S. Cancer Mortality<sup>c</sup>, 1975-2009</u>														
All Races	1975-90	0.6*	1990-94	-0.2	1994-02	-0.8*	2002-09	-1.5*					-1.4*	-1.5*
White	1975-90	0.6*	1990-94	-0.2	1994-02	-0.8*	2002-09	-1.4*					-1.3*	-1.4*
Black	1975-92	1.0*	1992-02	-0.9*	2002-09	-1.8*							-1.6*	-1.8*
<u>U.S. Cancer Mortality<sup>c</sup>, 1992-2009</u>														
All Races	1992-94	-0.2	1994-02	-0.8*	2002-09	-1.5*							-1.4*	-1.5*
White	1992-95	-0.2	1995-98	-1.2*	1998-01	-0.3	2001-09	-1.4*					-1.3*	-1.4*
White NH <sup>ef</sup>	1992-94	0.3	1994-98	-1.0*	1998-01	-0.1	2001-09	-1.3*					-1.2*	-1.3*
Black	1992-02	-0.8*	2002-09	-1.8*									-1.6*	-1.8*
Black NH <sup>ef</sup>	1992-02	-0.7*	2002-09	-1.8*									-1.5*	-1.8*
API <sup>e</sup>	1992-09	-1.0*											-1.0*	-1.0*
AI/AN <sup>eg</sup>	1992-09	-0.1											-0.1	-0.1
Hispanic <sup>f</sup>	1992-01	-0.3*	2001-09	-1.6*									-1.4*	-1.6*

Joinpoint Regression Program Version 3.5, April 2011, National Cancer Institute. (<http://surveillance.cancer.gov/joinpoint/>).

The APC is the Annual Percent Change based on rates age-adjusted to the 2000 US Std Population (19 age groups - Census P25-1130).

Trends are from the SEER 9 areas (San Francisco, Connecticut, Detroit, Hawaii, Iowa, New Mexico, Seattle, Utah, and Atlanta).

Trends are from the SEER 13 areas (SEER 9 Areas, Los Angeles, San Jose-Monterey, Rural Georgia, and the Alaska Native Registry).

Trends are from US Mortality Files, National Center for Health Statistics, Centers for Disease Control and Prevention.

The AAPC is the Average Annual Percent Change and is based on the APCs calculated by Joinpoint.

API - Asian/Pacific Islander, AI/AN - American Indian/Alaska Native, NH - Non-Hispanic

Hispanic and Non-Hispanic are not mutually exclusive from whites, blacks, Asian/Pacific Islanders, and American Indians/Alaska

Natives. Incidence data for Hispanics and Non-Hispanics are based on NHIA and exclude cases from the Alaska Native Registry.

The Hispanic and Non-Hispanic mortality trends exclude deaths from CT, DC, ME, MD, MN, NH, NY, ND, SC, OK and VT.

Data for American Indian/Alaska Native are based on the CHSDA (Contract Health Service Delivery Area) counties.

\* The APC/AAPC is significantly different from zero ( $p < .05$ ).

- Joinpoint regression line analysis could not be performed on data series.

Table 2.4  
All Cancer Sites (Invasive)

Delay-adjusted SEER Incidence<sup>a</sup> Rates by Year, Race and Sex

Year of Diagnosis:	All Races			Whites			Blacks		
	Total	Males	Females	Total	Males	Females	Total	Males	Females
1975	400.44	466.85	365.86	402.11	468.61	369.51	426.61	525.51	356.79
1976	407.40	481.15	367.40	409.70	481.87	373.11	427.45	553.17	340.43
1977	407.78	486.53	363.75	409.33	487.15	367.91	442.64	577.58	352.06
1978	407.32	488.40	362.21	409.83	489.81	367.96	436.38	570.67	343.89
1979	412.54	496.46	365.60	414.15	497.60	369.77	451.67	589.96	359.20
1980	418.07	505.83	368.11	419.49	505.21	373.37	467.50	615.15	366.55
1981	425.27	510.84	377.13	427.68	510.82	383.91	472.73	633.91	362.94
1982	424.51	511.10	376.22	427.80	512.51	383.48	465.36	621.92	359.74
1983	431.20	520.01	380.81	434.45	521.06	388.00	487.11	646.06	382.12
1984	440.07	525.53	392.53	443.74	527.82	399.64	488.41	644.14	386.28
1985	448.94	531.35	403.23	453.58	533.66	411.64	489.15	643.94	388.14
1986	451.49	538.35	402.41	456.12	543.06	409.21	494.04	644.45	396.50
1987	468.11	563.28	413.36	475.04	568.98	423.47	501.16	666.23	394.29
1988	463.95	558.51	409.33	470.47	565.30	418.02	504.19	657.77	404.67
1989	467.88	567.19	408.44	475.40	573.84	418.82	492.90	661.69	384.81
1990	482.07	592.84	415.60	489.12	599.57	425.03	521.88	700.16	408.73
1991	503.24	637.65	419.13	510.83	644.90	428.83	549.58	765.35	413.12
1992	510.80	658.40	415.04	517.21	663.85	423.85	569.19	809.12	413.89
1993	493.62	622.34	408.53	497.37	620.71	417.48	568.92	819.21	404.46
1994	483.69	589.96	413.70	487.83	588.01	423.47	558.55	784.35	409.45
1995	477.12	571.84	415.03	482.64	570.71	426.58	542.89	748.63	405.14
1996	479.39	572.79	418.28	485.36	574.47	428.61	541.19	727.75	417.63
1997	486.82	576.02	428.82	494.37	577.31	441.95	541.33	741.21	410.97
1998	488.63	573.22	434.24	497.66	577.44	447.70	536.41	722.90	416.42
1999	491.05	581.30	431.04	499.68	583.97	444.63	541.13	723.45	421.50
2000	486.68	580.44	422.68	497.69	585.03	439.10	528.23	713.82	404.17
2001	490.36	581.38	427.74	502.14	588.43	443.69	521.21	699.33	401.45
2002	488.15	575.04	428.77	498.85	582.41	442.25	536.18	701.86	426.12
2003	475.57	560.05	417.77	486.77	565.86	433.37	520.31	683.61	412.32
2004	476.25	557.78	420.17	486.94	564.29	434.07	523.92	685.42	418.16
2005	472.02	548.60	419.35	484.24	557.97	434.11	507.77	643.48	418.63
2006	475.18	554.24	419.38	486.67	561.72	434.13	509.50	647.37	415.61
2007	480.97	564.97	420.93	491.59	571.11	435.25	519.75	671.48	416.23
2008	474.08	545.12	424.32	483.88	550.22	438.05	520.65	668.88	420.46
2009	474.95	537.88	431.29	483.60	542.54	443.29	517.79	648.00	429.86

Additional information on the model used to delay-adjust SEER Incidence rates can be found at [\(http://surveillance.cancer.gov/delay/\)](http://surveillance.cancer.gov/delay/).

- <sup>a</sup> SEER 9 areas (San Francisco, Connecticut, Detroit, Hawaii, Iowa, New Mexico, Seattle, Utah, and Atlanta).  
Rates are per 100,000 and are age-adjusted to the 2000 US Std Population (19 age groups - Census P25-1130).  
- Delay-adjusted rate is not shown for observed rates based on less than 16 cases for the time interval.

Table 2.5  
All Cancer Sites (Invasive)

Age-adjusted SEER Incidence<sup>a</sup> Rates by Year, Race and Sex

	All Races			Whites			Blacks		
	Total	Males	Females	Total	Males	Females	Total	Males	Females
Year of Diagnosis:									
1975-2009	463.85	553.21	406.89	469.20	555.53	415.93	508.33	674.48	398.26
1975	400.44	466.85	365.86	402.11	468.61	369.51	426.61	525.51	356.79
1976	407.40	481.15	367.40	409.70	481.87	373.11	427.45	553.17	340.43
1977	407.78	486.53	363.75	409.33	487.15	367.91	442.64	577.58	352.06
1978	407.32	488.40	362.21	409.83	489.81	367.96	436.38	570.67	343.89
1979	412.54	496.46	365.60	414.15	497.60	369.77	451.67	589.96	359.20
1980	418.07	505.83	368.11	419.49	505.21	373.37	467.50	615.15	366.55
1981	425.27	510.84	377.13	427.68	510.82	383.91	472.73	633.91	362.94
1982	424.49	511.09	376.21	427.78	512.48	383.45	465.32	621.86	359.71
1983	431.17	519.98	380.79	434.40	521.00	387.96	487.03	645.95	382.05
1984	440.02	525.48	392.48	443.66	527.72	399.57	488.28	643.97	386.18
1985	448.87	531.27	403.17	453.47	533.53	411.53	488.97	643.70	387.99
1986	451.40	538.25	402.33	455.97	542.88	409.07	493.80	644.14	396.30
1987	468.00	563.15	413.26	474.85	568.74	423.30	500.85	665.82	394.04
1988	463.81	558.35	409.20	470.23	565.01	417.81	503.81	657.28	404.36
1989	467.72	566.99	408.29	475.11	573.48	418.56	492.45	661.08	384.46
1990	481.87	592.59	415.42	488.76	599.12	424.71	521.30	699.38	408.28
1991	502.99	637.34	418.92	510.39	644.35	428.46	548.89	764.39	412.60
1992	510.50	658.02	414.79	516.69	663.18	423.42	568.35	807.92	413.28
1993	493.28	621.92	408.25	496.78	619.97	416.98	567.94	817.79	403.76
1994	483.30	589.48	413.35	487.15	587.18	422.88	557.42	782.76	408.63
1995	476.66	571.30	414.63	481.85	569.77	425.87	541.61	746.87	404.18
1996	478.84	572.14	417.80	484.42	573.36	427.78	539.70	725.75	416.48
1997	486.17	575.25	428.23	493.24	575.99	440.94	539.59	738.83	409.65
1998	487.91	572.38	433.59	496.41	576.00	446.59	534.53	720.37	414.96
1999	490.07	580.15	430.17	497.99	582.00	443.13	538.61	720.09	419.54
2000	485.53	579.08	421.66	495.70	582.69	437.35	525.35	709.93	401.97
2001	488.97	579.75	426.51	499.76	585.64	441.59	517.87	694.85	398.88
2002	486.48	573.11	427.29	496.04	579.12	439.76	532.13	696.57	422.90
2003	473.62	557.78	416.03	483.50	562.06	430.45	515.67	677.52	408.65
2004	473.88	555.05	418.05	483.02	559.74	430.58	518.39	678.18	413.75
2005	469.17	545.33	416.79	479.56	552.57	429.91	501.40	635.41	413.38
2006	471.69	550.22	416.26	481.00	555.17	429.07	501.88	637.69	409.39
2007	476.64	559.93	417.09	484.66	563.06	429.11	510.45	659.47	408.79
2008	468.83	539.14	419.56	475.59	540.79	430.54	509.47	654.51	411.43
2009	464.87	526.55	422.04	469.13	526.31	430.03	499.00	624.48	414.26

<sup>a</sup> SEER 9 areas (San Francisco, Connecticut, Detroit, Hawaii, Iowa, New Mexico, Seattle, Utah, and Atlanta). Rates are per 100,000 and are age-adjusted to the 2000 US Std Population (19 age groups - Census P25-1130).  
- Statistic not shown. Rate based on less than 16 cases for the time interval.

Table 2.6  
All Cancer Sites (Invasive)

Age-adjusted U.S. Death<sup>a</sup> Rates by Year, Race and Sex

Year of Death:	All Races			Whites			Blacks		
	Total	Males	Females	Total	Males	Females	Total	Males	Females
1975-2009	200.73	255.70	165.11	197.92	250.37	164.06	250.40	345.79	191.11
1975	199.14	258.43	160.03	196.33	254.00	158.99	235.50	320.45	174.17
1976	202.30	262.23	162.70	199.38	257.50	161.69	241.76	328.45	179.10
1977	203.02	264.23	162.94	199.67	258.78	161.61	246.38	337.95	181.60
1978	204.42	267.07	163.76	201.14	261.65	162.54	247.24	340.91	181.53
1979	204.53	268.65	163.06	201.20	263.24	161.70	248.98	344.67	182.73
1980	206.96	271.08	165.75	203.27	265.03	164.17	256.18	353.91	189.25
1981	206.40	269.78	165.90	202.64	263.27	164.55	256.77	358.65	187.47
1982	208.32	272.89	167.45	204.54	266.28	166.11	260.36	364.86	190.17
1983	209.21	274.09	168.27	205.17	267.22	166.69	263.75	369.32	193.24
1984	210.91	275.08	170.55	206.66	267.55	169.02	268.15	377.93	195.67
1985	211.35	275.68	170.96	207.25	268.25	169.58	268.06	377.82	196.31
1986	211.79	276.04	171.59	207.73	268.83	170.01	269.45	378.92	199.05
1987	211.91	276.34	171.54	207.78	268.96	169.87	271.12	383.24	199.91
1988	212.62	276.89	172.53	208.48	269.46	170.94	271.59	384.17	200.36
1989	214.30	278.50	174.25	209.96	270.25	172.88	275.87	395.28	200.87
1990	214.95	279.82	174.65	210.41	271.48	172.89	279.30	399.14	205.39
1991	215.06	279.15	175.30	210.62	271.19	173.41	278.97	395.85	207.39
1992	213.46	276.51	174.39	209.24	268.91	172.58	274.93	389.20	205.80
1993	213.45	275.89	174.55	209.16	267.89	172.82	277.09	394.76	206.29
1994	211.74	272.12	174.11	207.83	264.73	172.62	271.96	385.20	204.06
1995	209.89	268.50	173.35	206.09	261.46	171.73	269.51	379.02	204.53
1996	207.00	263.75	171.21	203.40	256.83	169.85	265.28	373.70	200.94
1997	203.55	258.13	169.00	199.94	251.58	167.35	262.14	363.18	202.53
1998	200.82	253.63	166.93	197.56	247.62	165.38	255.66	353.13	198.38
1999	200.72	252.75	167.24	197.75	247.14	165.92	253.80	349.23	197.54
2000	198.76	248.41	166.67	196.33	243.31	165.94	248.20	341.48	193.26
2001	196.09	244.83	164.42	193.73	240.03	163.52	244.62	334.93	192.18
2002	194.03	241.35	163.03	191.96	237.25	162.14	241.26	327.14	191.51
2003	190.46	235.56	160.68	188.56	231.79	159.81	235.79	316.59	188.81
2004	186.37	230.11	157.34	184.58	226.30	156.68	229.85	309.95	183.64
2005	184.72	228.06	155.79	183.18	224.75	155.18	225.96	303.63	181.13
2006	181.55	222.71	153.93	180.40	219.98	153.59	220.27	293.91	177.57
2007	178.70	219.51	151.19	177.49	216.61	150.84	217.80	291.01	175.78
2008	175.78	215.65	148.42	174.86	213.29	148.23	211.27	280.09	170.95
2009	173.09	211.90	146.43	172.38	209.78	146.46	207.75	274.73	168.17

<sup>a</sup> US Mortality Files, National Center for Health Statistics, Centers for Disease Control and Prevention.  
Rates are per 100,000 and are age-adjusted to the 2000 US Std Population (19 age groups - Census P25-1130).  
- Statistic not shown. Rate based on less than 16 cases for the time interval.

Table 2.7  
All Cancer Sites (Invasive)

SEER Incidence<sup>a</sup> and U.S. Death<sup>b</sup> Rates, Age-Adjusted and Age-Specific Rates, by Race and Sex

	All Races			Whites			Blacks		
	Total	Males	Females	Total	Males	Females	Total	Males	Females
<u>SEER Incidence</u>									
<u>Age at Diagnosis</u>									
Age-Adjusted Rates, 2005-2009									
All ages	465.2	541.8	412.3	471.7	542.7	423.1	489.5	627.1	398.3
Under 65	225.8	221.6	231.3	227.6	220.0	236.5	250.3	285.6	223.0
65 and over	2,119.9	2,754.8	1,663.2	2,159.1	2,773.6	1,712.8	2,143.3	2,987.8	1,609.7
All ages (IARC world std) <sup>c</sup>	316.4	356.7	286.7	320.4	356.3	294.2	340.9	430.4	277.4
Age-Specific Rates, 2005-2009									
<1	22.9	24.7	21.1	23.4	24.9	21.8	18.6	21.0	16.2
1-4	20.3	21.6	19.0	21.4	22.7	19.9	15.6	16.5	14.8
5-9	11.8	12.7	10.9	12.3	13.4	11.2	9.3	9.7	9.0
10-14	13.8	14.6	13.1	14.5	15.3	13.6	11.5	11.9	11.2
15-19	21.8	22.7	20.8	23.3	24.6	22.0	14.7	14.8	14.5
20-24	35.7	33.7	37.8	38.5	37.0	40.0	22.7	19.7	25.7
25-29	54.5	46.3	63.2	58.3	50.2	67.0	39.5	31.3	47.6
30-34	84.8	61.7	108.8	89.3	65.3	115.2	71.3	49.3	91.5
35-39	131.1	87.5	175.8	135.1	91.3	181.5	115.0	76.7	149.7
40-44	216.4	149.1	284.2	218.6	150.7	289.1	214.7	159.3	264.1
45-49	354.5	279.8	428.2	356.6	277.9	436.3	369.7	338.1	397.6
50-54	567.9	547.4	587.6	564.1	533.5	594.4	670.1	754.3	597.8
55-59	861.9	957.1	772.1	859.8	936.1	785.8	1,047.7	1,361.4	789.1
60-64	1,269.1	1,513.5	1,045.3	1,274.2	1,491.0	1,070.6	1,534.5	2,112.6	1,079.8
65-69	1,765.1	2,220.7	1,366.3	1,784.7	2,205.5	1,408.4	2,006.0	2,848.7	1,374.6
70-74	2,091.6	2,687.1	1,606.0	2,132.3	2,700.8	1,658.6	2,158.5	3,016.0	1,555.2
75-79	2,341.1	3,041.8	1,823.1	2,401.5	3,079.7	1,890.0	2,199.1	2,992.0	1,701.0
80-84	2,416.9	3,157.9	1,947.5	2,470.7	3,200.7	2,004.2	2,200.0	3,016.1	1,767.1
85+	2,234.6	3,110.1	1,831.2	2,260.9	3,153.2	1,852.8	2,253.2	3,197.2	1,900.3
<u>U.S. Mortality</u>									
<u>Age at Death</u>									
Age-Adjusted Rates, 2005-2009									
All ages	178.7	219.4	151.1	177.6	216.7	150.8	216.4	288.3	174.6
Under 65	57.7	61.9	53.8	56.0	59.7	52.5	80.7	92.1	71.6
65 and over	1,014.8	1,307.9	823.3	1,018.1	1,302.2	830.3	1,154.6	1,644.4	886.6
All ages (IARC world std) <sup>c</sup>	106.3	125.8	91.8	105.1	123.6	91.2	133.9	170.9	109.9
Age-Specific Rates, 2005-2009									
<1	1.7	2.0	1.5	1.8	2.0	1.6	1.6	1.9	1.3
1-4	2.2	2.4	2.1	2.3	2.4	2.1	2.3	2.4	2.1
5-9	2.3	2.5	2.2	2.4	2.5	2.3	2.4	2.4	2.3
10-14	2.3	2.4	2.1	2.3	2.4	2.2	2.2	2.3	2.1
15-19	3.2	3.7	2.6	3.2	3.7	2.7	3.1	3.6	2.6
20-24	4.6	5.5	3.7	4.6	5.5	3.6	5.0	5.6	4.5
25-29	6.6	7.0	6.1	6.4	6.9	5.9	8.0	8.1	8.0
30-34	11.2	10.3	12.2	11.0	10.1	11.9	14.3	12.5	15.9
35-39	20.6	17.3	24.0	20.0	17.0	23.1	27.2	21.0	32.7
40-44	41.7	36.5	46.9	40.1	35.4	44.9	57.2	48.1	65.3
45-49	83.0	79.9	86.0	79.4	76.4	82.3	119.3	116.7	121.7
50-54	150.9	161.1	141.2	144.8	153.4	136.3	219.9	247.9	196.1
55-59	249.4	280.7	219.8	241.1	268.1	215.2	360.1	443.8	291.5
60-64	400.9	462.0	344.9	394.0	449.0	342.4	545.4	691.0	431.5
65-69	605.9	718.5	507.3	602.1	707.2	508.2	769.2	997.2	601.2
70-74	844.9	1,024.6	697.4	848.3	1,018.7	705.7	971.4	1,295.5	746.7
75-79	1,113.5	1,399.0	901.1	1,123.1	1,399.8	913.2	1,200.3	1,643.7	927.0
80-84	1,389.0	1,838.5	1,102.9	1,399.2	1,840.1	1,114.6	1,483.2	2,159.6	1,128.4
85+	1,663.5	2,421.0	1,322.0	1,663.4	2,409.0	1,325.4	1,923.8	3,197.2	1,455.5

<sup>a</sup> SEER 18 areas. Rates are per 100,000 and are age-adjusted to the 2000 US Std Population (19 age groups - Census P25-1130), unless noted.

<sup>b</sup> US Mortality Files, National Center for Health Statistics, Centers for Disease Control and Prevention.

<sup>c</sup> Rates are per 100,000 and are age-adjusted to the 2000 US Std Population (19 age groups - Census P25-1130), unless noted.

<sup>d</sup> Rates are per 100,000 and are age-adjusted to the IARC world standard population.

- Statistic not shown. Rate based on less than 16 cases for the time interval.

Table 2.8  
All Cancer Sites (Invasive)

5-Year Relative and Period Survival (Percent) by Race, Sex, Diagnosis Year and Age

	All Races			Whites			Blacks		
	Total	Males	Females	Total	Males	Females	Total	Males	Females
5-Year Relative Survival (Percent)									
Year of Diagnosis:									
1960-1963 <sup>a</sup>	-	-	-	39	-	-	27	-	-
1970-1973 <sup>a</sup>	-	-	-	43	-	-	31	-	-
1975-1977 <sup>b</sup>	49.1	42.0	56.0	50.0	42.9	56.7	39.2	32.9	46.4
1978-1980 <sup>b</sup>	49.2	43.3	55.1	50.1	44.5	55.7	39.0	33.4	45.7
1981-1983 <sup>b</sup>	50.4	45.4	55.3	51.5	46.8	56.2	39.0	34.3	44.6
1984-1986 <sup>b</sup>	52.5	47.3	57.7	53.8	48.8	58.7	40.2	35.6	45.5
1987-1989 <sup>b</sup>	55.5	51.4	59.8	56.8	53.0	60.8	43.1	39.0	47.8
1990-1992 <sup>b</sup>	60.1	59.3	61.0	61.5	61.0	62.2	47.9	47.7	48.3
1993-1995 <sup>b</sup>	61.4	61.0	61.9	62.5	62.2	63.0	52.8	54.4	50.7
1996-1998 <sup>b</sup>	63.4	63.1	63.8	64.5	64.2	64.8	55.1	57.8	52.1
1999-2001 <sup>b</sup>	66.1	66.4	65.8	67.3	67.6	66.9	57.8	60.9	54.1
2002-2008 <sup>b</sup>	67.7 <sup>e</sup>	68.5 <sup>e</sup>	66.9 <sup>e</sup>	68.9 <sup>e</sup>	69.7 <sup>e</sup>	68.0 <sup>e</sup>	59.9 <sup>e</sup>	63.6 <sup>e</sup>	55.8 <sup>e</sup>
5-Year Period Survival (Percent) <sup>cd</sup>									
2008	66.2	66.8	65.5	66.8	67.2	66.3	59.3	62.5	55.6
5-Year Relative Survival (Percent), 2002-2008 <sup>c</sup>									
Age at Diagnosis:									
Ages <45	80.0	75.0	83.2	81.6	77.1	84.6	67.9	60.7	72.2
Ages 45-54	72.0	66.3	76.7	73.6	67.8	78.5	60.6	58.8	62.4
Ages 55-64	69.0	68.9	69.0	69.8	69.6	70.2	61.6	64.7	56.7
Ages 65-74	64.6	68.0	59.7	65.1	68.2	60.8	59.1	65.9	48.9
Ages 75+	52.0	56.8	47.4	52.7	57.0	48.6	42.8	50.3	36.4
Ages <65	72.3	69.2	75.3	73.5	70.4	76.6	62.5	62.2	62.9
Ages 65+	58.3	62.9	52.8	58.8	63.0	53.9	52.3	60.4	42.7

<sup>a</sup> Based on End Results data from a series of hospital registries and one population-based registry.  
<sup>b</sup> SEER 9 areas (San Francisco, Connecticut, Detroit, Hawaii, Iowa, New Mexico, Seattle, Utah, Atlanta).  
Based on follow-up of patients into 2009.  
<sup>c</sup> SEER 18 areas (San Francisco, Connecticut, Detroit, Hawaii, Iowa, New Mexico, Seattle, Utah, Atlanta, San Jose-Monterey, Los Angeles, Alaska Native Registry, Rural Georgia, California excluding SF/SJM/LA, Kentucky, Louisiana, New Jersey and Georgia excluding ATL/RG).  
Based on follow-up of patients into 2009.  
<sup>d</sup> Period survival provides a 2008 estimate of survival by piecing together the most recent conditional survival estimates from several cohorts. It is computed here using three year calendar blocks (2006-2008: 0-1 year survival), (2005-2007: 1-2 year survival), (2004-2006: 2-3 year survival), (2003-2005: 3-4 year survival), (2002-2004: 4-5 years survival).  
The difference between 1975-1977 and 2002-2008 is statistically significant (p<.05).  
<sup>e</sup> The standard error is between 5 and 10 percentage points.  
<sup>f</sup> The standard error is greater than 10 percentage points.  
<sup>g</sup> -  
- Statistic could not be calculated due to fewer than 25 cases during the time period.



Table 2.9  
All Cancer Sites (Invasive)

SEER<sup>a</sup> Relative Survival (Percent)  
By Year of Diagnosis

All Races, Males and Females

Survival Time	Year of Diagnosis																					
	1975- 1979	1980- 1984	1985- 1989	1990	1991	1992	1993	1994	1995	1996	1997	1998	1999	2000	2001	2002	2003	2004	2005	2006	2007	2008
1-year	69.9	71.4	73.9	75.6	77.2	77.8	77.2	77.0	77.1	77.5	78.2	78.5	79.1	79.5	80.0	80.2	79.9	80.5	80.7	81.3	81.6	81.8
2-year	60.1	61.6	64.8	67.1	69.0	70.2	69.7	69.3	69.6	70.4	71.1	71.7	72.5	73.0	73.7	74.1	73.6	74.2	74.4	75.4	75.7	
3-year	55.0	56.4	60.0	62.7	64.8	66.4	65.8	65.5	65.9	66.8	67.6	68.2	69.1	69.7	70.4	71.0	70.4	71.0	71.2	72.2		
4-year	51.6	53.0	56.9	59.8	62.2	63.9	63.3	62.9	63.4	64.4	65.2	65.9	66.9	67.6	68.4	68.9	68.3	68.8	69.2			
5-year	49.1	50.4	54.6	57.9	60.2	62.0	61.4	61.1	61.7	62.6	63.5	64.1	65.3	66.1	66.9	67.4	66.8	67.3				
6-year	47.2	48.3	52.8	56.2	58.6	60.5	60.1	59.6	60.3	61.3	62.1	62.8	64.0	64.9	65.8	66.2	65.5					
7-year	45.5	46.6	51.2	54.7	57.2	59.1	58.7	58.4	59.1	60.2	61.1	61.8	63.0	63.8	64.7	65.2						
8-year	44.2	45.2	49.9	53.5	56.0	58.0	57.6	57.4	58.2	59.3	60.2	60.9	62.0	62.8	63.9							
9-year	43.0	44.0	48.8	52.4	55.0	57.1	56.6	56.5	57.3	58.4	59.3	60.0	61.3	62.0								
10-year	41.9	43.0	47.8	51.4	54.2	56.2	55.7	55.6	56.5	57.5	58.6	59.2	60.6									
11-year	41.0	42.0	46.9	50.4	53.4	55.4	54.8	54.8	55.7	56.9	57.8	58.5										
12-year	40.1	41.2	46.0	49.7	52.7	54.7	54.1	54.0	54.9	56.2	57.2											
13-year	39.5	40.4	45.2	49.0	52.0	54.1	53.4	53.4	54.1	55.5												
14-year	38.8	39.7	44.5	48.3	51.4	53.5	52.8	52.6	53.4													
15-year	38.1	39.1	43.9	47.7	50.6	52.9	52.0	52.1														
16-year	37.5	38.3	43.3	47.1	50.0	52.3	51.4															
17-year	37.0	37.7	42.7	46.4	49.4	51.6																
18-year	36.5	37.2	42.2	45.8	48.8																	
19-year	36.1	36.7	41.8	45.3																		
20-year	35.6	36.2	41.3																			

<sup>a</sup> Based on the SEER 9 areas (San Francisco, Connecticut, Detroit, Hawaii, Iowa, New Mexico, Seattle, Utah, and Atlanta).

Table 2.10  
All Cancer Sites (Invasive)

SEER<sup>a</sup> Relative Survival (Percent)  
By Year of Diagnosis

All Races, Males

Year of Diagnosis

	1975- 1979	1980- 1984	1985- 1989	1990	1991	1992	1993	1994	1995	1996	1997	1998	1999	2000	2001	2002	2003	2004	2005	2006	2007	2008
Survival Time																						
1-year	64.5	67.4	70.6	73.7	76.3	77.5	76.6	76.1	75.9	76.8	77.4	77.3	78.5	79.1	79.6	79.7	79.4	80.2	80.3	81.2	81.7	81.5
2-year	53.8	56.8	60.8	64.6	68.0	69.9	69.1	68.1	68.3	69.7	70.4	70.6	71.7	72.7	73.3	73.7	73.2	74.0	74.2	75.5	75.9	
3-year	48.4	51.5	55.7	60.2	64.1	66.5	65.5	64.6	64.8	66.3	67.1	67.3	68.6	69.6	70.5	71.0	70.3	71.2	71.2	72.5		
4-year	44.9	47.9	52.4	57.3	61.4	64.2	63.3	62.1	62.5	64.0	65.0	65.1	66.7	67.7	68.6	69.2	68.5	69.2	69.5			
5-year	42.4	45.2	50.1	55.3	59.5	62.5	61.5	60.5	61.0	62.4	63.3	63.6	65.3	66.4	67.5	68.1	67.3	68.1				
6-year	40.4	43.2	48.2	53.6	57.9	61.1	60.3	59.1	59.6	61.2	62.0	62.4	64.2	65.3	66.5	67.1	66.1					
7-year	38.7	41.4	46.5	51.9	56.5	59.8	59.0	57.9	58.6	60.2	61.2	61.4	63.3	64.3	65.6	66.4						
8-year	37.2	40.0	45.2	50.7	55.2	58.5	58.1	56.8	57.7	59.4	60.4	60.6	62.5	63.4	65.0							
9-year	35.9	38.8	44.0	49.6	54.3	57.6	57.0	55.9	56.9	58.6	59.6	59.8	61.7	62.8								
10-year	34.7	37.7	42.9	48.5	53.4	56.7	56.1	55.1	56.1	57.7	59.0	59.1	61.2									
11-year	33.6	36.7	42.0	47.5	52.5	56.0	55.2	54.3	55.4	57.0	58.3	58.4										
12-year	32.7	35.8	41.0	46.7	51.9	55.3	54.5	53.5	54.5	56.3	57.7											
13-year	32.0	35.0	40.2	46.1	51.2	54.6	53.7	52.9	53.7	55.8												
14-year	31.2	34.2	39.4	45.4	50.6	54.0	53.0	52.0	52.8													
15-year	30.5	33.5	38.7	44.6	49.8	53.3	52.2	51.5														
16-year	29.8	32.7	38.0	43.9	49.1	52.7	51.8															
17-year	29.2	32.1	37.5	43.3	48.5	52.1																
18-year	28.6	31.5	36.9	42.7	48.1																	
19-year	28.1	31.0	36.4	42.3																		
20-year	27.7	30.4	36.0																			

<sup>a</sup> Based on the SEER 9 areas (San Francisco, Connecticut, Detroit, Hawaii, Iowa, New Mexico, Seattle, Utah, and Atlanta).

Table 2.11  
All Cancer Sites (Invasive)

SEER<sup>a</sup> Relative Survival (Percent)  
By Year of Diagnosis

All Races, Females

Year of Diagnosis

	1975- 1979	1980- 1984	1985- 1989	1990	1991	1992	1993	1994	1995	1996	1997	1998	1999	2000	2001	2002	2003	2004	2005	2006	2007	2008
Survival Time																						
1-year	75.2	75.5	77.3	77.7	78.3	78.2	77.9	77.9	78.3	78.3	79.0	79.7	79.8	79.9	80.4	80.8	80.5	80.8	81.1	81.3	81.6	82.1
2-year	66.4	66.5	68.9	69.8	70.2	70.5	70.4	70.6	71.0	71.2	71.9	72.8	73.2	73.2	74.1	74.6	74.1	74.4	74.7	75.2	75.4	
3-year	61.5	61.4	64.4	65.4	65.8	66.3	66.2	66.6	67.0	67.4	68.1	69.1	69.6	69.8	70.3	71.0	70.5	70.9	71.2	71.8		
4-year	58.1	58.1	61.5	62.6	63.1	63.5	63.4	63.8	64.4	64.9	65.5	66.7	67.2	67.4	68.1	68.5	68.1	68.3	68.9			
5-year	55.7	55.5	59.2	60.7	61.0	61.3	61.4	61.9	62.5	62.9	63.7	64.7	65.3	65.8	66.3	66.7	66.2	66.5				
6-year	53.8	53.5	57.4	59.0	59.4	59.8	59.8	60.3	61.0	61.4	62.2	63.3	63.8	64.5	65.0	65.3	64.9					
7-year	52.2	51.8	55.9	57.6	58.1	58.3	58.3	58.9	59.7	60.4	61.0	62.2	62.7	63.2	63.7	64.0						
8-year	50.9	50.4	54.7	56.5	56.9	57.4	57.1	58.0	58.7	59.2	60.1	61.2	61.6	62.1	62.7							
9-year	49.8	49.3	53.6	55.4	55.9	56.6	56.1	57.2	57.8	58.2	59.1	60.3	60.8	61.2								
10-year	48.8	48.2	52.6	54.4	55.0	55.7	55.3	56.2	57.0	57.4	58.2	59.3	60.0									
11-year	47.9	47.2	51.7	53.6	54.4	54.8	54.4	55.3	56.1	56.8	57.4	58.5										
12-year	47.1	46.4	50.9	52.9	53.6	54.1	53.7	54.6	55.5	56.1	56.8											
13-year	46.5	45.7	50.2	52.1	52.9	53.4	53.2	54.0	54.6	55.3												
14-year	45.8	45.0	49.5	51.4	52.2	53.0	52.5	53.3	54.0													
15-year	45.2	44.4	48.9	50.8	51.6	52.3	51.8	52.8														
16-year	44.7	43.7	48.4	50.3	51.0	51.8	51.0															
17-year	44.2	43.1	47.8	49.7	50.4	51.1																
18-year	43.7	42.6	47.4	49.0	49.7																	
19-year	43.3	42.0	47.0	48.4																		
20-year	42.8	41.6	46.4																			

<sup>a</sup> Based on the SEER 9 areas (San Francisco, Connecticut, Detroit, Hawaii, Iowa, New Mexico, Seattle, Utah, and Atlanta).

Table 2.12  
All Cancer Sites (Invasive)

Risk of Being Diagnosed With Cancer in 10, 20 and 30 Years,  
Lifetime Risk of Being Diagnosed with Cancer Given Alive and Cancer-Free at Current Age, and  
Lifetime Risk of Dying from Cancer Given Alive at Current Age  
Both Sexes, 2007-2009 By Race/Ethnicity

Race/ Ethnicity	Current Age	Risk of Being Diagnosed with Cancer				Risk of Dying from Cancer	Race/ Ethnicity	Current Age	Risk of Being Diagnosed with Cancer				Risk of Dying from Cancer
		+10 yrs	+20 yrs	+30 yrs	Ever				+10 yrs	+20 yrs	+30 yrs	Ever	
All Races	0	0.17	0.35	0.79	41.24	21.00	Asian/ Pacific Islander	0	0.14	0.28	0.59	35.78	18.57
	10	0.18	0.63	1.67	41.62	21.25		10	0.14	0.46	1.26	35.99	18.71
	20	0.45	1.50	4.13	41.65	21.31		20	0.31	1.12	3.23	35.97	18.72
	30	1.06	3.73	9.85	41.74	21.45		30	0.81	2.94	7.28	35.91	18.75
	40	2.72	8.98	20.14	41.55	21.57		40	2.15	6.55	14.35	35.55	18.73
	50	6.57	18.29	31.00	40.77	21.55		50	4.54	12.58	22.86	34.43	18.53
	60	13.09	27.28	35.94	38.20	20.86		60	8.59	19.57	28.05	31.92	17.85
	70	17.85	28.74	-	31.59	18.56		70	12.59	22.32	-	26.76	16.30
80	16.83	-	-	21.23	14.15	80	12.82	-	-	18.67	13.21		
White	0	0.17	0.37	0.84	41.48	21.15	American Indian/ Alaska Native <sup>a</sup>	0	0.13	0.26	0.57	28.48	16.73
	10	0.19	0.67	1.75	41.79	21.36		10	0.13	0.44	1.24	28.78	17.00
	20	0.48	1.56	4.20	41.81	21.41		20	0.31	1.12	3.01	28.90	17.11
	30	1.10	3.77	9.84	41.86	21.54		30	0.82	2.76	6.88	29.19	17.39
	40	2.72	8.93	20.14	41.63	21.65		40	2.00	6.27	13.76	29.38	17.77
	50	6.51	18.27	31.14	40.82	21.62		50	4.54	12.49	21.57	29.09	18.12
	60	13.09	27.43	36.07	38.21	20.93		60	8.85	18.96	25.10	27.34	17.84
	70	17.99	28.81	-	31.51	18.60		70	12.41	19.94	-	22.69	16.23
80	16.79	-	-	20.97	14.11	80	11.08	-	-	15.11	12.46		
Black	0	0.13	0.26	0.56	37.91	21.14	Hispanic <sup>b</sup>	0	0.16	0.34	0.72	37.35	17.20
	10	0.13	0.44	1.33	38.68	21.61		10	0.18	0.56	1.37	37.61	17.36
	20	0.31	1.21	3.88	38.80	21.70		20	0.39	1.20	3.18	37.62	17.39
	30	0.91	3.63	10.66	39.12	21.94		30	0.82	2.82	7.48	37.65	17.47
	40	2.80	10.03	21.85	39.29	22.18		40	2.03	6.77	15.74	37.44	17.50
	50	7.71	20.32	31.19	38.91	22.28		50	4.91	14.22	25.47	36.73	17.42
	60	14.77	27.51	34.55	36.55	21.63		60	10.13	22.37	30.89	34.62	16.89
	70	17.42	27.05	-	29.79	19.29		70	14.63	24.80	-	29.26	15.29
80	15.96	-	-	20.48	15.27	80	14.35	-	-	20.64	12.18		

Devcan Version 6.6.1, April 2012, National Cancer Institute (<http://surveillance.cancer.gov/devcan/>).

Source: Incidence data are from the SEER 18 areas (San Francisco, Connecticut, Detroit, Hawaii, Iowa, New Mexico, Seattle, Utah, Atlanta, San Jose-Monterey, Los Angeles, Alaska Native Registry, Rural Georgia, California excluding SF/SJM/LA, Kentucky, Louisiana, New Jersey, and Georgia excluding ATL/RG). Mortality data are from the NCHS public use data file for the total US.

<sup>a</sup> Underlying incidence and mortality data for American Indian/Alaska Native are based on the CHSDA (Contract Health Service Delivery Area) counties.

<sup>b</sup> Hispanic is not mutually exclusive from whites, blacks, Asian/Pacific Islanders, and American Indians/Alaska Natives. Underlying incidence data for Hispanics are based on NHIA and exclude cases from the Alaska Native Registry. Underlying mortality data for Hispanics exclude deaths from the District of Columbia, Minnesota, New Hampshire, North Dakota and South Carolina.

- Statistic could not be calculated.  
A percent of 0.00 represents a value that is below 0.005.

Table 2.13  
All Cancer Sites (Invasive)

Risk of Being Diagnosed With Cancer in 10, 20 and 30 Years,  
Lifetime Risk of Being Diagnosed with Cancer Given Alive and Cancer-Free at Current Age, and  
Lifetime Risk of Dying from Cancer Given Alive at Current Age  
Males, 2007-2009 By Race/Ethnicity

Race/ Ethnicity	Current Age	Risk of Being Diagnosed with Cancer				Risk of Dying from Cancer	Race/ Ethnicity	Current Age	Risk of Being Diagnosed with Cancer				Risk of Dying from Cancer
		+10 yrs	+20 yrs	+30 yrs	Ever				+10 yrs	+20 yrs	+30 yrs	Ever	
All Races	0	0.18	0.36	0.75	44.81	23.08	Asian/ Pacific Islander	0	0.16	0.30	0.55	37.88	21.09
	10	0.19	0.58	1.30	45.28	23.38		10	0.14	0.40	0.88	38.12	21.25
	20	0.39	1.12	3.16	45.39	23.48		20	0.25	0.74	2.05	38.13	21.28
	30	0.74	2.82	9.34	45.72	23.73		30	0.49	1.81	5.75	38.19	21.35
	40	2.12	8.79	22.18	45.98	23.99		40	1.33	5.32	14.36	38.12	21.37
	50	7.00	21.08	36.06	46.08	24.24		50	4.09	13.37	25.74	37.76	21.28
	60	16.03	33.09	42.42	44.51	23.91		60	9.94	23.21	32.66	36.09	20.76
	70	22.81	35.29	-	38.07	21.93		70	15.69	26.87	-	30.93	19.27
80	21.73	-	-	26.59	17.69	80	15.85	-	-	21.61	15.97		
White	0	0.18	0.38	0.80	44.55	23.16	American Indian/ Alaska Native <sup>a</sup>	0	0.14	0.26	0.54	29.30	17.55
	10	0.20	0.62	1.38	44.94	23.42		10	0.12	0.40	0.99	29.64	17.86
	20	0.42	1.18	3.21	45.02	23.50		20	0.28	0.88	2.17	29.85	18.03
	30	0.77	2.83	9.17	45.30	23.73		30	0.61	1.94	6.03	30.38	18.43
	40	2.10	8.58	21.81	45.50	23.97		40	1.39	5.66	14.19	31.06	19.05
	50	6.80	20.68	35.68	45.54	24.20		50	4.54	13.63	23.82	31.61	19.77
	60	15.74	32.73	41.93	43.91	23.86		60	10.30	21.84	28.53	30.67	19.81
	70	22.55	34.75	-	37.37	21.84		70	14.79	23.37	-	26.11	18.60
80	21.20	-	-	25.75	17.53	80	13.62	-	-	17.97	14.93		
Black	0	0.14	0.28	0.52	42.77	23.67	Hispanic <sup>b</sup>	0	0.17	0.36	0.71	40.63	19.71
	10	0.14	0.39	1.00	43.72	24.27		10	0.19	0.54	1.05	40.96	19.91
	20	0.25	0.87	3.26	43.98	24.43		20	0.35	0.86	2.23	41.04	19.98
	30	0.63	3.07	11.71	44.69	24.85		30	0.52	1.91	6.48	41.27	20.14
	40	2.53	11.45	26.92	45.51	25.37		40	1.42	6.06	16.65	41.43	20.29
	50	9.59	26.22	38.98	46.19	25.92		50	4.82	15.81	29.50	41.52	20.42
	60	20.43	36.11	43.34	44.97	25.93		60	12.11	27.21	36.68	40.45	20.22
	70	24.32	35.55	-	38.08	24.30		70	18.87	30.72	-	35.43	18.85
80	22.23	-	-	27.24	20.95	80	18.31	-	-	25.59	15.79		

Devcan Version 6.6.1, April 2012, National Cancer Institute (<http://surveillance.cancer.gov/devcan/>).

Source: Incidence data are from the SEER 18 areas (San Francisco, Connecticut, Detroit, Hawaii, Iowa, New Mexico, Seattle, Utah, Atlanta, San Jose-Monterey, Los Angeles, Alaska Native Registry, Rural Georgia, California excluding SF/SJM/LA, Kentucky, Louisiana, New Jersey, and Georgia excluding ATL/RG). Mortality data are from the NCHS public use data file for the total US.

<sup>a</sup> Underlying incidence and mortality data for American Indian/Alaska Native are based on the CHSDA (Contract Health Service Delivery Area) counties.

<sup>b</sup> Hispanic is not mutually exclusive from whites, blacks, Asian/Pacific Islanders, and American Indians/Alaska Natives. Underlying incidence data for Hispanics are based on NHIA and exclude cases from the Alaska Native Registry. Underlying mortality data for Hispanics exclude deaths from the District of Columbia, Minnesota, New Hampshire, North Dakota and South Carolina.

- Statistic could not be calculated.  
A percent of 0.00 represents a value that is below 0.005.

Table 2.14  
All Cancer Sites (Invasive)

Risk of Being Diagnosed With Cancer in 10, 20 and 30 Years,  
Lifetime Risk of Being Diagnosed with Cancer Given Alive and Cancer-Free at Current Age, and  
Lifetime Risk of Dying from Cancer Given Alive at Current Age  
Females, 2007-2009 By Race/Ethnicity

Race/ Ethnicity	Current Age	Risk of Being Diagnosed with Cancer				Risk of Dying from Cancer	Race/ Ethnicity	Current Age	Risk of Being Diagnosed with Cancer				Risk of Dying from Cancer
		+10 yrs	+20 yrs	+30 yrs	Ever				+10 yrs	+20 yrs	+30 yrs	Ever	
All Races	0	0.16	0.33	0.83	38.17	19.39	Asian/ Pacific Islander	0	0.12	0.27	0.63	34.20	16.59
	10	0.18	0.68	2.06	38.48	19.60		10	0.14	0.51	1.62	34.37	16.70
	20	0.51	1.90	5.12	38.44	19.62		20	0.37	1.48	4.33	34.32	16.71
	30	1.40	4.65	10.40	38.29	19.67		30	1.12	3.99	8.69	34.17	16.71
	40	3.32	9.19	18.22	37.67	19.66		40	2.91	7.68	14.39	33.51	16.65
	50	6.16	15.63	26.31	36.04	19.42		50	4.94	11.88	20.45	31.68	16.37
	60	10.39	22.10	30.32	32.77	18.50		60	7.39	16.51	24.24	28.47	15.59
	70	13.96	23.77	-	26.69	16.14		70	10.18	18.82	-	23.54	14.09
80	13.89	-	-	18.03	12.02	80	10.78	-	-	16.68	11.32		
White	0	0.16	0.35	0.88	38.87	19.58	American Indian/ Alaska Native <sup>a</sup>	0	0.12	0.26	0.60	27.91	16.15
	10	0.18	0.72	2.15	39.12	19.76		10	0.15	0.48	1.51	28.18	16.38
	20	0.54	1.98	5.25	39.08	19.78		20	0.34	1.37	3.86	28.21	16.44
	30	1.45	4.75	10.57	38.90	19.83		30	1.04	3.57	7.72	28.27	16.60
	40	3.37	9.31	18.55	38.24	19.82		40	2.59	6.87	13.38	27.99	16.78
	50	6.23	15.92	26.87	36.58	19.57		50	4.53	11.43	19.52	26.92	16.83
	60	10.61	22.61	30.89	33.23	18.64		60	7.56	16.42	22.19	24.53	16.35
	70	14.31	24.20	-	26.99	16.25		70	10.48	17.29	-	20.07	14.53
80	14.08	-	-	18.05	12.03	80	9.45	-	-	13.29	10.97		
Black	0	0.12	0.25	0.61	33.72	19.23	Hispanic <sup>b</sup>	0	0.15	0.32	0.74	35.03	15.44
	10	0.13	0.50	1.65	34.33	19.62		10	0.17	0.60	1.76	35.24	15.56
	20	0.37	1.53	4.46	34.34	19.65		20	0.43	1.60	4.25	35.19	15.57
	30	1.17	4.14	9.77	34.33	19.73		30	1.18	3.85	8.62	35.02	15.58
	40	3.04	8.81	17.46	33.97	19.77		40	2.71	7.56	15.08	34.40	15.51
	50	6.11	15.26	24.51	32.75	19.54		50	5.03	12.83	22.01	32.87	15.24
	60	10.31	20.74	27.72	30.01	18.57		60	8.38	18.26	26.08	29.92	14.50
	70	13.00	21.71	-	24.57	16.14		70	11.35	20.35	-	24.76	12.90
80	12.97	-	-	17.23	12.41	80	11.87	-	-	17.70	10.08		

Devcan Version 6.6.1, April 2012, National Cancer Institute (<http://surveillance.cancer.gov/devcan/>).

Source: Incidence data are from the SEER 18 areas (San Francisco, Connecticut, Detroit, Hawaii, Iowa, New Mexico, Seattle, Utah, Atlanta, San Jose-Monterey, Los Angeles, Alaska Native Registry, Rural Georgia, California excluding SF/SJM/LA, Kentucky, Louisiana, New Jersey, and Georgia excluding ATL/RG). Mortality data are from the NCHS public use data file for the total US.

<sup>a</sup> Underlying incidence and mortality data for American Indian/Alaska Native are based on the CHSDA (Contract Health Service Delivery Area) counties.

<sup>b</sup> Hispanic is not mutually exclusive from whites, blacks, Asian/Pacific Islanders, and American Indians/Alaska Natives. Underlying incidence data for Hispanics are based on NHIA and exclude cases from the Alaska Native Registry. Underlying mortality data for Hispanics exclude deaths from the District of Columbia, Minnesota, New Hampshire, North Dakota and South Carolina.

- Statistic could not be calculated.

A percent of 0.00 represents a value that is below 0.005.

Table 2.15  
All Cancer Sites (Invasive)

SEER Incidence and U.S. Mortality  
Age-Adjusted Rates and Trends<sup>a</sup>  
By Race/Ethnicity and Sex

SEER Incidence	SEER 18 Areas <sup>b</sup>			SEER 13 Areas <sup>b</sup>			SEER 9 Areas <sup>b</sup>		
	Rate 2005-2009			Trend 2000-2009 <sup>c</sup>			Trend 2000-2009 <sup>d</sup>		
	Rate per 100,000 persons			AAPC (%)			AAPC (%)		
RACE/ETHNICITY	Total	Males	Females	Total	Males	Females	Total	Males	Females
All Races	465.2	541.8	412.3	-0.6*	-1.0*	-0.2	-0.5*	-0.9*	-0.2
White	471.7	542.7	423.1	-0.6*	-0.9*	-0.3*	-0.6*	-1.0*	-0.4*
White Hispanic <sup>e</sup>	358.6	405.4	330.2	-0.5*	-1.4*	0.0	-	-	-
White Non-Hispanic <sup>e</sup>	490.6	564.7	439.0	-0.5*	-0.8*	-0.3	-	-	-
Black	489.5	627.1	398.3	-0.7*	-1.4*	0.0	-0.7*	-1.2*	0.0
Asian/Pacific Islander	315.0	342.6	299.4	-0.3*	-1.4*	0.3*	-	-	-
Amer Ind/Alaska Nat <sup>f</sup>	328.9	352.7	313.8	0.2	-0.3	0.8*	-	-	-
Hispanic <sup>e</sup>	353.7	402.0	324.1	-0.4*	-1.2*	0.1	-	-	-
<u>U.S. Mortality<sup>g</sup></u>									
RACE/ETHNICITY	Rate 2005-2009			Trend 2000-2009 <sup>h</sup>					
	Rate per 100,000 persons			AAPC (%)					
	Total	Males	Females	Total	Males	Females			
All Races	178.7	219.4	151.1	-1.5*	-1.8*	-1.4*			
White	177.6	216.7	150.8	-1.4*	-1.6*	-1.3*			
White Hispanic <sup>e</sup>	123.6	151.3	104.3	-1.8*	-2.2*	-1.4*			
White Non-Hispanic <sup>e</sup>	182.0	221.9	154.7	-1.3*	-1.5*	-1.2*			
Black	216.4	288.3	174.6	-2.0*	-2.3*	-1.6*			
Asian/Pacific Islander	109.5	132.6	93.2	-1.5*	-1.7*	-1.0*			
Amer Ind/Alaska Nat									
Total U.S.	121.3	143.2	105.7	-1.5*	-1.5*	-0.8*			
CHSDA Counties	156.2	184.9	135.9	-0.2	-0.4*	-0.1			
Non-CHSDA Counties	79.5	94.4	68.7	-2.9*	-3.5*	-1.4*			
Hispanic <sup>e</sup>	119.3	146.3	100.5	-1.9*	-2.3*	-1.4*			

The AAPC is the Average Annual Percent Change over the time interval. The AAPCs are calculated by the Joinpoint Regression Program Version 3.5, April 2011, National Cancer Institute.

- Statistic not shown. Rate based on less than 16 cases for the time interval.

Trend based on less than 10 cases for at least one year within the time interval.

a Rates are age-adjusted to the 2000 US Std Population (19 age groups - Census P25-1130). Trends

are based on rates age-adjusted to the 2000 US Std Population (19 age groups - Census P25-1130).

b The SEER 9 areas are San Francisco, Connecticut, Detroit, Hawaii, Iowa, New Mexico, Seattle, Utah, and Atlanta.

The SEER 13 areas comprise the SEER 9 areas plus San Jose-Monterey, Los Angeles, the Alaska Native Registry, and Rural Georgia.

The SEER 18 areas comprise the SEER 13 areas plus California excluding SF/SJM/LA, Kentucky, Louisiana, New Jersey, and Georgia excluding ATL/RG.

c The 2000-2009 AAPC estimates are based on a Joinpoint analysis with up to 3 Joinpoints over diagnosis years 1992-2009.

d The 2000-2009 AAPC estimates are based on a Joinpoint analysis with up to 5 Joinpoints over diagnosis years 1975-2009.

e Hispanic and Non-Hispanic are not mutually exclusive from whites, blacks, Asian/Pacific Islanders, and American Indians/Alaska Natives. Incidence data for Hispanics and Non-Hispanics are based on NHIA and exclude cases from the Alaska Native Registry. The 2005-2009 Hispanic and Non-Hispanic death rates exclude deaths from the District of Columbia, North Dakota, and South Carolina. The 2000-2009 Hispanic and Non-Hispanic mortality trends exclude deaths from Connecticut, the District of Columbia, Maine, Maryland, Minnesota, New Hampshire, New York, North Dakota, Oklahoma, South Carolina and Vermont.

f Incidence data for American Indian/Alaska Native are based on the CHSDA(Contract Health Service Delivery Area) counties.

g US Mortality Files, National Center for Health Statistics, CDC.

h The 2000-2009 mortality AAPCs are based on a Joinpoint analysis using years of death 1992-2009.

\* The APC is significantly different from zero (p<.05).

Table 2.16  
All Cancer Sites (Invasive)

Age-Adjusted SEER Incidence Rates<sup>a</sup>  
By Registry, Race and Sex

	All Races			Whites			Blacks		
	Total	Males	Females	Total	Males	Females	Total	Males	Females
<u>SEER Incidence Rates<sup>a</sup>, 2005-2009</u>									
California	437.98	502.69	393.90	448.31	509.34	407.18	469.52	579.40	392.73
Greater Bay Area	440.17	501.77	398.13	469.01	533.03	424.95	480.57	590.69	403.58
San Francisco-Oakland	444.12	506.35	401.58	472.06	535.65	428.13	487.54	599.43	411.27
San Jose-Monterey	432.38	492.89	391.10	463.54	528.34	419.31	430.14	530.53	341.14
Los Angeles	420.61	484.10	379.38	425.57	480.13	391.38	469.22	583.27	394.74
Greater California	445.32	511.38	399.42	451.29	513.56	408.56	466.80	570.98	386.74
Connecticut	508.47	585.50	457.43	509.47	580.97	463.35	478.96	612.09	389.01
Detroit	515.12	612.06	449.97	506.41	585.81	455.42	548.00	701.95	446.92
Georgia	461.06	561.99	391.97	460.35	546.29	401.76	474.15	635.33	373.86
Atlanta	444.33	532.21	384.25	435.88	503.85	391.56	486.23	637.97	390.89
Rural Georgia	473.94	599.29	380.36	496.97	603.17	413.53	428.45	588.17	325.18
Greater Georgia	468.84	574.17	396.99	468.95	560.96	405.70	471.32	637.85	368.63
Hawaii	436.51	495.79	395.82	531.41	625.91	454.01	362.70	457.90	240.38
Iowa	481.14	557.14	429.40	476.88	549.34	428.16	552.82	706.82	435.00
Kentucky	515.20	605.58	453.25	512.98	600.40	453.23	533.98	662.75	449.67
Louisiana	488.86	604.82	404.51	483.55	587.29	406.72	519.09	683.76	410.25
New Jersey	501.25	582.57	448.07	509.19	583.43	461.83	477.52	604.40	397.16
New Mexico	411.70	471.96	364.74	420.65	481.61	372.65	284.13	321.44	242.48
Seattle-Puget Sound	499.37	566.29	451.12	509.11	573.40	462.79	512.11	625.97	413.02
Utah	395.17	463.35	341.42	401.65	470.86	346.93	299.02	348.21	253.84
9 SEER Areas <sup>b</sup>	470.19	544.07	418.35	477.89	547.37	429.68	504.44	642.20	411.52
11 SEER Areas <sup>b</sup>	456.95	527.97	407.94	466.09	532.57	420.77	494.40	625.09	406.46
13 SEER Areas <sup>b</sup>	457.10	528.22	408.00	466.20	532.81	420.74	493.40	624.48	405.21
18 SEER Areas <sup>b</sup>	465.19	541.80	412.27	471.67	542.75	423.11	489.55	627.14	398.28

<sup>a</sup> Rates are per 100,000 and are age-adjusted to the 2000 US Std Population (19 age groups - Census P25-1130)

<sup>b</sup> The SEER 9 areas are San Francisco, Connecticut, Detroit, Hawaii, Iowa, New Mexico, Seattle, Utah and Atlanta.

The SEER 11 areas comprise the SEER 9 areas plus San Jose-Monterey and Los Angeles.

The SEER 13 areas comprise the SEER 11 areas plus the Alaska Native Registry and Rural Georgia.

The SEER 18 areas comprise the SEER 13 areas plus California excluding SF/SJM/LA, Kentucky, Louisiana, New Jersey and Georgia excluding ATL/RG.

- Statistic not shown. Rate based on less than 16 cases for the time interval.



Table 2.17  
All Cancer Sites (Invasive)

Age-Adjusted SEER Death Rates<sup>a</sup>  
By Registry, Race and Sex

	All Races			Whites			Blacks		
	Total	Males	Females	Total	Males	Females	Total	Males	Females
<u>SEER Death Rates<sup>a</sup>, 2005-2009</u>									
California	163.07	194.87	141.71	167.25	198.71	146.19	215.57	273.26	181.58
Greater Bay Area	153.43	180.91	135.37	159.83	186.79	142.37	217.27	270.68	186.91
San Francisco-Oakland	156.57	185.30	137.71	161.33	188.73	143.45	222.83	278.07	191.58
San Jose-Monterey	147.14	172.24	130.61	157.15	183.40	140.42	181.37	227.81	151.30
Los Angeles	158.94	189.90	138.92	159.24	187.22	141.42	218.67	280.19	183.52
Greater California	168.39	202.07	145.25	172.52	206.61	149.12	212.56	269.16	176.66
Connecticut	173.41	212.00	149.61	173.52	211.62	150.21	187.28	239.30	156.30
Detroit	190.20	229.06	166.19	182.30	217.74	160.31	229.11	290.78	192.63
Georgia	179.23	230.77	146.81	174.09	220.18	143.89	203.35	287.37	159.00
Atlanta	156.29	190.07	136.72	142.99	170.55	126.73	197.64	265.01	164.12
Rural Georgia	197.09	259.96	153.22	184.88	235.84	145.80	224.64	324.07	167.22
Greater Georgia	189.41	248.17	151.78	185.95	238.89	150.74	208.04	301.84	157.45
Hawaii	147.81	184.64	119.64	180.40	222.46	148.55	117.37	154.25	68.42
Iowa	178.34	220.08	150.98	178.13	219.50	151.07	243.92	340.20	182.33
Kentucky	211.31	267.18	173.63	210.32	265.27	172.99	246.64	329.31	197.17
Louisiana	204.05	260.82	165.83	192.30	242.55	157.71	244.53	331.49	191.41
New Jersey	179.05	213.85	157.68	180.83	215.02	159.78	206.44	264.21	174.12
New Mexico	158.17	190.10	134.32	161.61	195.15	136.29	139.87	158.99	120.68
Seattle-Puget Sound	174.49	206.54	152.51	177.35	208.51	156.11	212.08	258.52	177.92
Utah	128.35	154.13	109.61	128.87	154.50	110.28	128.05	163.46	101.72
9 SEER Areas <sup>b</sup>	166.90	201.12	144.27	167.58	201.04	145.54	210.66	269.29	176.64
11 SEER Areas <sup>b</sup>	164.07	197.05	142.35	165.38	197.33	144.49	212.21	271.35	177.97
13 SEER Areas <sup>b</sup>	164.37	197.43	142.54	165.53	197.51	144.56	212.19	271.90	177.53
18 SEER Areas <sup>b</sup>	173.50	210.91	148.62	174.64	210.96	150.45	216.23	284.87	176.32
Total U.S.	178.65	219.38	151.06	177.56	216.72	150.78	216.38	288.27	174.56

<sup>a</sup> US Mortality Files, National Center for Health Statistics, Centers for Disease Control and Prevention. Rates are per 100,000 and are age-adjusted to the 2000 US Std Population (19 age groups - Census P25-1130).

<sup>b</sup> The SEER 9 areas are San Francisco, Connecticut, Detroit, Hawaii, Iowa, New Mexico, Seattle, Utah and Atlanta. The SEER 11 areas comprise the SEER 9 areas plus San Jose-Monterey and Los Angeles.

The SEER 13 areas comprise the SEER 11 areas plus the Alaska Native Registry and Rural Georgia.

The SEER 18 areas comprise the SEER 13 areas plus California excluding SF/SJM/LA, Kentucky, Louisiana, New Jersey and Georgia excluding ATL/RG.

- Statistic not shown. Rate based on less than 16 cases for the time interval.

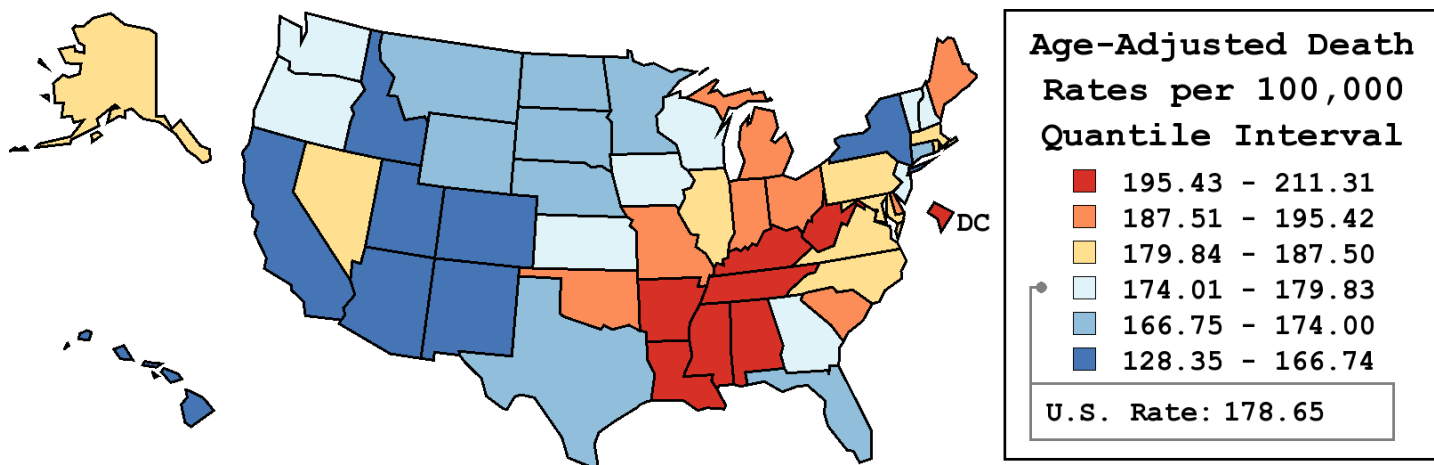
Table 2.18  
All Cancer Sites (Invasive)

Age-Adjusted Cancer Death<sup>a</sup> Rates by State, All Races, 2005-2009

Males and Females

State	Rate	SE	Rank	PD
TOTAL U.S.	178.65	0.11		
High Five States				
Kentucky	211.31 <sup>b</sup>	0.97	(01)	18.28 <sup>c</sup>
West Virginia	206.56 <sup>b</sup>	1.36	(02)	15.62 <sup>c</sup>
Mississippi	204.74 <sup>b</sup>	1.18	(03)	14.60 <sup>c</sup>
Louisiana	204.05 <sup>b</sup>	0.97	(04)	14.21 <sup>c</sup>
Tennessee	200.56 <sup>b</sup>	0.79	(05)	12.26 <sup>c</sup>
Low Five States				
New Mexico	158.17 <sup>b</sup>	1.26	(47)	-11.46 <sup>c</sup>
Colorado	154.59 <sup>b</sup>	0.86	(48)	-13.47 <sup>c</sup>
Arizona	152.84 <sup>b</sup>	0.68	(49)	-14.45 <sup>c</sup>
Hawaii	147.81 <sup>b</sup>	1.43	(50)	-17.26 <sup>c</sup>
Utah	128.35 <sup>b</sup>	1.15	(51)	-28.16 <sup>c</sup>

State	Rate	SE	Rank	PD	State	Rate	SE	Rank	PD
Alabama	198.24 <sup>b</sup>	0.89	(07)	10.97 <sup>c</sup>	Montana	172.53	1.78	(37)	-3.43
Alaska	181.35	3.05	(23)	1.51	Nebraska	174.00	1.35	(35)	-2.60
Arizona	152.84 <sup>b</sup>	0.68	(49)	-14.45 <sup>c</sup>	Nevada	183.03	1.26	(22)	2.45
Arkansas	199.69 <sup>b</sup>	1.12	(06)	11.78 <sup>c</sup>	New Hampshire	179.46	1.60	(27)	0.45
California	163.07 <sup>b</sup>	0.31	(46)	-8.72 <sup>c</sup>	New Jersey	179.05	0.62	(29)	0.22
Colorado	154.59 <sup>b</sup>	0.86	(48)	-13.47 <sup>c</sup>	New Mexico	158.17 <sup>b</sup>	1.26	(47)	-11.46 <sup>c</sup>
Connecticut	173.41 <sup>b</sup>	0.94	(36)	-2.94	New York	166.74 <sup>b</sup>	0.40	(44)	-6.67 <sup>c</sup>
Delaware	190.45 <sup>b</sup>	2.00	(14)	6.60 <sup>c</sup>	North Carolina	186.28 <sup>b</sup>	0.64	(19)	4.27
D.C.	196.47 <sup>b</sup>	2.61	(08)	9.98 <sup>c</sup>	North Dakota	171.11	2.15	(39)	-4.22
Florida	169.96 <sup>b</sup>	0.38	(40)	-4.86	Ohio	194.90 <sup>b</sup>	0.55	(10)	9.09 <sup>c</sup>
Georgia	179.23	0.67	(28)	0.32	Oklahoma	194.77 <sup>b</sup>	1.01	(11)	9.02 <sup>c</sup>
Hawaii	147.81 <sup>b</sup>	1.43	(50)	-17.26 <sup>c</sup>	Oregon	179.83	0.95	(26)	0.66
Idaho	165.84 <sup>b</sup>	1.52	(45)	-7.17 <sup>c</sup>	Pennsylvania	187.50 <sup>b</sup>	0.50	(17)	4.95
Illinois	186.65 <sup>b</sup>	0.54	(18)	4.48	Rhode Island	180.37	1.73	(24)	0.96
Indiana	195.42 <sup>b</sup>	0.77	(09)	9.39 <sup>c</sup>	South Carolina	187.94 <sup>b</sup>	0.90	(15)	5.20 <sup>c</sup>
Iowa	178.34	1.01	(32)	-0.18	South Dakota	168.20 <sup>b</sup>	1.92	(43)	-5.85 <sup>c</sup>
Kansas	178.80	1.10	(30)	0.08	Tennessee	200.56 <sup>b</sup>	0.79	(05)	12.26 <sup>c</sup>
Kentucky	211.31 <sup>b</sup>	0.97	(01)	18.28 <sup>c</sup>	Texas	171.30 <sup>b</sup>	0.41	(38)	-4.12
Louisiana	204.05 <sup>b</sup>	0.97	(04)	14.21 <sup>c</sup>	Utah	128.35 <sup>b</sup>	1.15	(51)	-28.16 <sup>c</sup>
Maine	192.79 <sup>b</sup>	1.55	(12)	7.91 <sup>c</sup>	Vermont	176.21	2.24	(34)	-1.37
Maryland	184.15 <sup>b</sup>	0.82	(20)	3.08	Virginia	183.16 <sup>b</sup>	0.70	(21)	2.52
Massachusetts	180.05	0.71	(25)	0.78	Washington	176.74	0.75	(33)	-1.07
Michigan	187.53 <sup>b</sup>	0.59	(16)	4.97	West Virginia	206.56 <sup>b</sup>	1.36	(02)	15.62 <sup>c</sup>
Minnesota	169.94 <sup>b</sup>	0.80	(41)	-4.87	Wisconsin	178.60	0.77	(31)	-0.03
Mississippi	204.74 <sup>b</sup>	1.18	(03)	14.60 <sup>c</sup>	Wyoming	169.82	2.54	(42)	-4.94
Missouri	191.40 <sup>b</sup>	0.77	(13)	7.13 <sup>c</sup>					



<sup>a</sup> US Mortality Files, National Center for Health Statistics, Centers for Disease Control and Prevention. Rates are per 100,000 and are age-adjusted to the 2000 US Std Population (19 age groups - Census P25-1130).  
<sup>b</sup> Difference between state rate and total U.S. rate is statistically significant (p<=.0002).  
<sup>c</sup> Absolute percent difference between state rate and total U.S. rate is 5% or more.  
SE Standard error of the rate.  
PD Percent difference between state rate and total U.S. rate.  
- Statistic not shown. Rate based on less than 16 cases for the time interval.

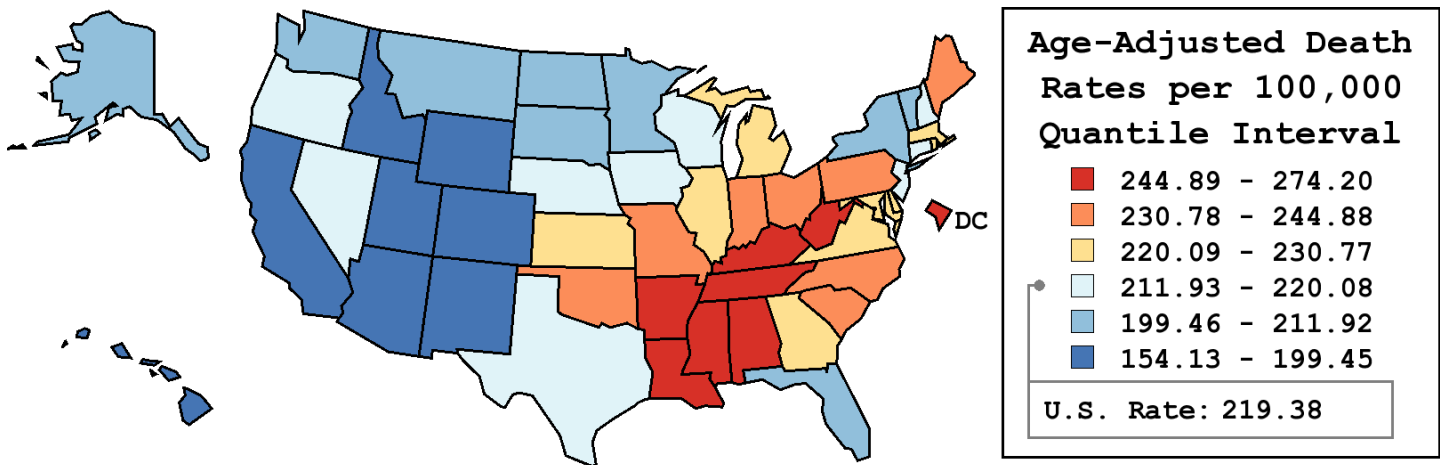
Table 2.19  
All Cancer Sites (Invasive)

Age-Adjusted Cancer Death<sup>a</sup> Rates by State, All Races, 2005-2009

Males

State	Rate	SE	Rank	PD
TOTAL U.S.	219.38	0.18		
High Five States				
Mississippi	274.20 <sup>b</sup>	2.16	(01)	24.99 <sup>c</sup>
Kentucky	267.18 <sup>b</sup>	1.72	(02)	21.79 <sup>c</sup>
Louisiana	260.82 <sup>b</sup>	1.72	(03)	18.89 <sup>c</sup>
Alabama	259.03 <sup>b</sup>	1.60	(04)	18.07 <sup>c</sup>
Tennessee	257.92 <sup>b</sup>	1.41	(05)	17.56 <sup>c</sup>
Low Five States				
New Mexico	190.10 <sup>b</sup>	2.08	(47)	-13.35 <sup>c</sup>
Colorado	185.02 <sup>b</sup>	1.47	(48)	-15.66 <sup>c</sup>
Hawaii	184.64 <sup>b</sup>	2.39	(49)	-15.84 <sup>c</sup>
Arizona	182.08 <sup>b</sup>	1.12	(50)	-17.00 <sup>c</sup>
Utah	154.13 <sup>b</sup>	1.91	(51)	-29.74 <sup>c</sup>

State	Rate	SE	Rank	PD	State	Rate	SE	Rank	PD
Alabama	259.03 <sup>b</sup>	1.60	(04)	18.07 <sup>c</sup>	Montana	203.37 <sup>b</sup>	2.91	(42)	-7.30 <sup>c</sup>
Alaska	209.46	5.03	(38)	-4.52	Nebraska	215.19	2.30	(29)	-1.91
Arizona	182.08 <sup>b</sup>	1.12	(50)	-17.00 <sup>c</sup>	Nevada	213.31	2.04	(32)	-2.77
Arkansas	253.69 <sup>b</sup>	1.94	(08)	15.64 <sup>c</sup>	New Hampshire	218.24	2.75	(28)	-0.52
California	194.87 <sup>b</sup>	0.53	(46)	-11.17 <sup>c</sup>	New Jersey	213.85 <sup>b</sup>	1.06	(31)	-2.52
Colorado	185.02 <sup>b</sup>	1.47	(48)	-15.66 <sup>c</sup>	New Mexico	190.10 <sup>b</sup>	2.08	(47)	-13.35 <sup>c</sup>
Connecticut	212.00 <sup>b</sup>	1.63	(34)	-3.36	New York	201.34 <sup>b</sup>	0.69	(43)	-8.22 <sup>c</sup>
Delaware	229.56	3.38	(18)	4.64	North Carolina	236.93 <sup>b</sup>	1.14	(15)	8.00 <sup>c</sup>
D.C.	256.34 <sup>b</sup>	4.84	(06)	16.85 <sup>c</sup>	North Dakota	210.23	3.59	(36)	-4.17
Florida	205.95 <sup>b</sup>	0.62	(41)	-6.12 <sup>c</sup>	Ohio	243.35 <sup>b</sup>	0.97	(10)	10.93 <sup>c</sup>
Georgia	230.77 <sup>b</sup>	1.24	(17)	5.19 <sup>c</sup>	Oklahoma	242.96 <sup>b</sup>	1.73	(11)	10.75 <sup>c</sup>
Hawaii	184.64 <sup>b</sup>	2.39	(49)	-15.84 <sup>c</sup>	Oregon	214.35	1.57	(30)	-2.29
Idaho	195.90 <sup>b</sup>	2.49	(45)	-10.70 <sup>c</sup>	Pennsylvania	232.37 <sup>b</sup>	0.86	(16)	5.92 <sup>c</sup>
Illinois	229.38 <sup>b</sup>	0.94	(19)	4.56	Rhode Island	228.82	3.05	(20)	4.30
Indiana	244.88 <sup>b</sup>	1.36	(09)	11.62 <sup>c</sup>	South Carolina	241.26 <sup>b</sup>	1.59	(12)	9.97 <sup>c</sup>
Iowa	220.08	1.72	(26)	0.32	South Dakota	206.04 <sup>b</sup>	3.21	(40)	-6.08 <sup>c</sup>
Kansas	221.55	1.89	(25)	0.99	Tennessee	257.92 <sup>b</sup>	1.41	(05)	17.56 <sup>c</sup>
Kentucky	267.18 <sup>b</sup>	1.72	(02)	21.79 <sup>c</sup>	Texas	212.50 <sup>b</sup>	0.72	(33)	-3.14
Louisiana	260.82 <sup>b</sup>	1.72	(03)	18.89 <sup>c</sup>	Utah	154.13 <sup>b</sup>	1.91	(51)	-29.74 <sup>c</sup>
Maine	240.04 <sup>b</sup>	2.69	(13)	9.42 <sup>c</sup>	Vermont	211.92	3.82	(35)	-3.40
Maryland	226.47 <sup>b</sup>	1.44	(23)	3.23	Virginia	228.46 <sup>b</sup>	1.24	(21)	4.14
Massachusetts	222.63	1.24	(24)	1.48	Washington	209.64 <sup>b</sup>	1.25	(37)	-4.44
Michigan	228.13 <sup>b</sup>	1.02	(22)	3.99	West Virginia	254.76 <sup>b</sup>	2.33	(07)	16.13 <sup>c</sup>
Minnesota	206.75 <sup>b</sup>	1.36	(39)	-5.76 <sup>c</sup>	Wisconsin	218.85	1.31	(27)	-0.24
Mississippi	274.20 <sup>b</sup>	2.16	(01)	24.99 <sup>c</sup>	Wyoming	199.45 <sup>b</sup>	4.17	(44)	-9.08 <sup>c</sup>
Missouri	237.57 <sup>b</sup>	1.33	(14)	8.29 <sup>c</sup>					



<sup>a</sup> US Mortality Files, National Center for Health Statistics, Centers for Disease Control and Prevention. Rates are per 100,000 and are age-adjusted to the 2000 US Std Population (19 age groups - Census P25-1130).  
<sup>b</sup> Difference between state rate and total U.S. rate is statistically significant (p<=.0002).  
<sup>c</sup> Absolute percent difference between state rate and total U.S. rate is 5% or more.  
SE Standard error of the rate.  
PD Percent difference between state rate and total U.S. rate.  
- Statistic not shown. Rate based on less than 16 cases for the time interval.

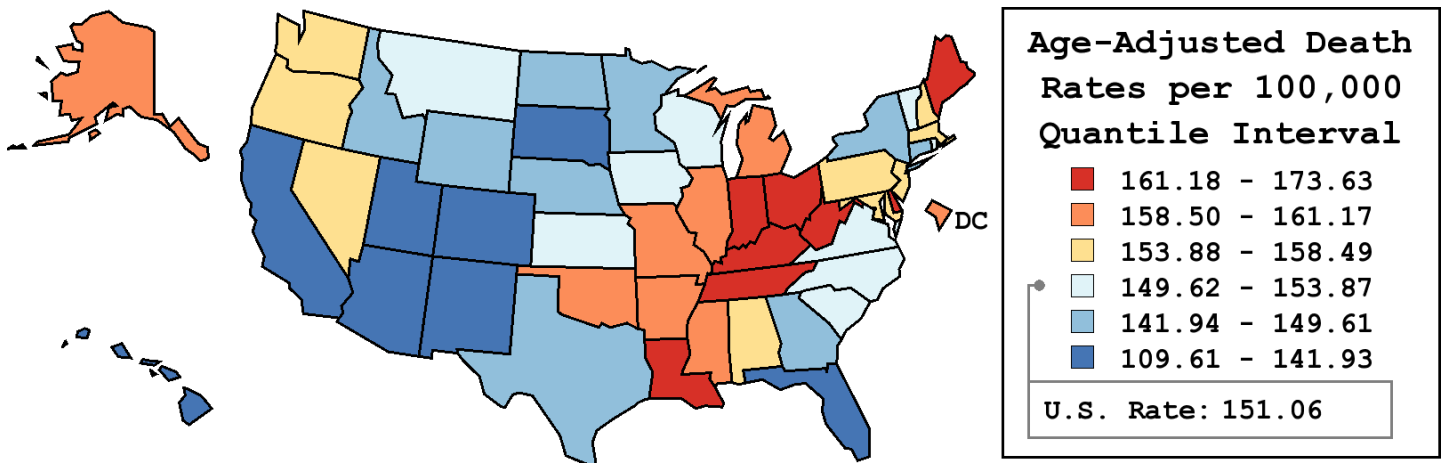
Table 2.20  
All Cancer Sites (Invasive)

Age-Adjusted Cancer Death<sup>a</sup> Rates by State, All Races, 2005-2009

Females

State	Rate	SE	Rank	PD
TOTAL U.S.	151.06	0.13		
High Five States				
Kentucky	173.63 <sup>b</sup>	1.17	(01)	14.94 <sup>c</sup>
West Virginia	173.15 <sup>b</sup>	1.68	(02)	14.62 <sup>c</sup>
Louisiana	165.83 <sup>b</sup>	1.16	(03)	9.78 <sup>c</sup>
Ohio	163.39 <sup>b</sup>	0.68	(04)	8.16 <sup>c</sup>
Indiana	163.17 <sup>b</sup>	0.94	(05)	8.02 <sup>c</sup>
Low Five States				
Colorado	134.38 <sup>b</sup>	1.07	(47)	-11.04 <sup>c</sup>
New Mexico	134.32 <sup>b</sup>	1.56	(48)	-11.09 <sup>c</sup>
Arizona	129.98 <sup>b</sup>	0.86	(49)	-13.96 <sup>c</sup>
Hawaii	119.64 <sup>b</sup>	1.75	(50)	-20.80 <sup>c</sup>
Utah	109.61 <sup>b</sup>	1.43	(51)	-27.44 <sup>c</sup>

State	Rate	SE	Rank	PD	State	Rate	SE	Rank	PD
Alabama	157.38 <sup>b</sup>	1.05	(20)	4.18	Montana	150.54	2.27	(33)	-0.34
Alaska	159.58	3.85	(15)	5.64 <sup>c</sup>	Nebraska	145.72	1.66	(39)	-3.53
Arizona	129.98 <sup>b</sup>	0.86	(49)	-13.96 <sup>c</sup>	Nevada	158.37 <sup>b</sup>	1.60	(18)	4.83
Arkansas	161.16 <sup>b</sup>	1.36	(10)	6.68 <sup>c</sup>	New Hampshire	154.69	1.99	(23)	2.40
California	141.71 <sup>b</sup>	0.39	(45)	-6.19 <sup>c</sup>	New Jersey	157.68 <sup>b</sup>	0.77	(19)	4.38
Colorado	134.38 <sup>b</sup>	1.07	(47)	-11.04 <sup>c</sup>	New Mexico	134.32 <sup>b</sup>	1.56	(48)	-11.09 <sup>c</sup>
Connecticut	149.61	1.16	(35)	-0.96	New York	145.18 <sup>b</sup>	0.49	(40)	-3.89
Delaware	162.79 <sup>b</sup>	2.48	(06)	7.76 <sup>c</sup>	North Carolina	152.72	0.76	(28)	1.10
D.C.	160.42	3.08	(12)	6.20 <sup>c</sup>	North Dakota	144.15	2.70	(41)	-4.58
Florida	141.93 <sup>b</sup>	0.48	(44)	-6.04 <sup>c</sup>	Ohio	163.39 <sup>b</sup>	0.68	(04)	8.16 <sup>c</sup>
Georgia	146.81 <sup>b</sup>	0.79	(37)	-2.81	Oklahoma	161.17 <sup>b</sup>	1.23	(09)	6.69 <sup>c</sup>
Hawaii	119.64 <sup>b</sup>	1.75	(50)	-20.80 <sup>c</sup>	Oregon	155.48 <sup>b</sup>	1.19	(22)	2.92
Idaho	143.54 <sup>b</sup>	1.93	(42)	-4.98	Pennsylvania	158.49 <sup>b</sup>	0.61	(17)	4.91
Illinois	160.11 <sup>b</sup>	0.66	(14)	5.99 <sup>c</sup>	Rhode Island	151.29	2.10	(30)	0.15
Indiana	163.17 <sup>b</sup>	0.94	(05)	8.02 <sup>c</sup>	South Carolina	151.03	1.07	(31)	-0.02
Iowa	150.98	1.26	(32)	-0.06	South Dakota	141.51 <sup>b</sup>	2.41	(46)	-6.33 <sup>c</sup>
Kansas	149.92	1.36	(34)	-0.76	Tennessee	161.96 <sup>b</sup>	0.94	(07)	7.22 <sup>c</sup>
Kentucky	173.63 <sup>b</sup>	1.17	(01)	14.94 <sup>c</sup>	Texas	142.76 <sup>b</sup>	0.50	(43)	-5.50 <sup>c</sup>
Louisiana	165.83 <sup>b</sup>	1.16	(03)	9.78 <sup>c</sup>	Utah	109.61 <sup>b</sup>	1.43	(51)	-27.44 <sup>c</sup>
Maine	161.61 <sup>b</sup>	1.91	(08)	6.98 <sup>c</sup>	Vermont	152.83	2.80	(27)	1.17
Maryland	157.30 <sup>b</sup>	0.99	(21)	4.13	Virginia	153.87	0.85	(26)	1.86
Massachusetts	153.99	0.87	(24)	1.94	Washington	153.91	0.94	(25)	1.88
Michigan	160.91 <sup>b</sup>	0.74	(11)	6.52 <sup>c</sup>	West Virginia	173.15 <sup>b</sup>	1.68	(02)	14.62 <sup>c</sup>
Minnesota	146.04 <sup>b</sup>	1.00	(38)	-3.32	Wisconsin	152.00	0.95	(29)	0.62
Mississippi	158.85 <sup>b</sup>	1.37	(16)	5.15 <sup>c</sup>	Wyoming	148.32	3.23	(36)	-1.82
Missouri	160.37 <sup>b</sup>	0.95	(13)	6.16 <sup>c</sup>					



<sup>a</sup> US Mortality Files, National Center for Health Statistics, Centers for Disease Control and Prevention. Rates are per 100,000 and are age-adjusted to the 2000 US Std Population (19 age groups - Census P25-1130).  
<sup>b</sup> Difference between state rate and total U.S. rate is statistically significant (p<=.0002).  
<sup>c</sup> Absolute percent difference between state rate and total U.S. rate is 5% or more.  
SE Standard error of the rate.  
PD Percent difference between state rate and total U.S. rate.  
- Statistic not shown. Rate based on less than 16 cases for the time interval.

Table 2.21  
All Cancer Sites (Invasive)

Estimated United States Cancer Prevalence Counts<sup>a</sup> on January 1, 2009  
By Race/Ethnicity, Sex and Years Since Diagnosis

Years Since Diagnosis		0 to <5	5 to <10	10 to <15	15 to <20	20 to <25	25 to <30	0 to <19 <sup>e</sup>	0 to <34 <sup>e</sup>	>=34 <sup>g</sup>	Complete <sup>h</sup>
<u>Race</u>	<u>Sex</u>										
All Races <sup>b</sup>	Both Sexes	4,357,341	3,022,968	2,016,342	1,278,550	738,833	437,465	10,479,611	12,096,978	456,359	12,553,337
	Males	2,246,570	1,519,767	947,022	551,691	250,351	137,162	5,193,308	5,717,465	93,632	5,811,097
	Females	2,110,771	1,503,201	1,069,320	726,859	488,482	300,303	5,286,303	6,379,513	362,727	6,742,240
White <sup>b</sup>	Both Sexes	3,710,739	2,639,002	1,778,231	1,149,321	671,706	398,911	9,099,659	10,571,450	401,052	10,972,502
	Males	1,905,553	1,317,934	830,086	498,591	230,018	126,935	4,486,216	4,968,978	87,505	5,056,483
	Females	1,805,186	1,321,068	948,145	650,730	441,688	271,976	4,613,443	5,602,472	313,547	5,916,019
Black <sup>b</sup>	Both Sexes	428,651	261,596	160,625	86,590	43,078	25,102	925,760	1,019,358	26,577	1,045,935
	Males	230,263	144,925	83,740	37,304	12,944	6,229	492,390	518,162	2,449	520,611
	Females	198,388	116,671	76,885	49,286	30,134	18,873	433,370	501,196	24,128	525,324
Asian/ Pacific Islander <sup>c</sup>	Both Sexes	125,291	76,487	46,393	+	+	+	270,475	+	+	+
	Males	54,838	31,418	17,398	+	+	+	111,227	+	+	+
	Females	70,453	45,069	28,995	+	+	+	159,248	+	+	+
Hispanic <sup>d</sup>	Both Sexes	282,399	171,977	105,097	+	+	+	613,843	+	+	+
	Males	135,959	80,564	46,453	+	+	+	284,175	+	+	+
	Females	146,440	91,413	58,644	+	+	+	329,668	+	+	+

Estimated prevalence percent<sup>a</sup> on January 1, 2009, of the SEER 11 population diagnosed in the previous 19 years  
By Age at Prevalence, Race/Ethnicity and Sex

Age at Prevalence	All Ages	Age Specific (Crude)									Age-Adjusted <sup>f</sup>	
		0-9	10-19	20-29	30-39	40-49	50-59	60-69	70-79	80+	All Ages	
<u>Race</u>	<u>Sex</u>											
All Races <sup>c</sup>	Both Sexes	2.7602%	0.0796%	0.1656%	0.2755%	0.6903%	1.6735%	3.8785%	8.5940%	13.7507%	14.2298%	2.7820%
	Males	2.7630%	0.0844%	0.1757%	0.2615%	0.5299%	1.1401%	3.2133%	9.4824%	18.2603%	20.8174%	3.1605%
	Females	2.7573%	0.0745%	0.1550%	0.2906%	0.8557%	2.2104%	4.5168%	7.7888%	10.1655%	10.5548%	2.5603%
White <sup>c</sup>	Both Sexes	2.9986%	0.0856%	0.1803%	0.3057%	0.7649%	1.7672%	4.0010%	8.9139%	14.3847%	14.6321%	2.9022%
	Males	2.9706%	0.0909%	0.1922%	0.2912%	0.5991%	1.2171%	3.2802%	9.6207%	18.7445%	21.0246%	3.2420%
	Females	3.0268%	0.0801%	0.1677%	0.3215%	0.9437%	2.3423%	4.7170%	8.2543%	10.8365%	11.0719%	2.7132%
Black <sup>c</sup>	Both Sexes	2.0532%	0.0580%	0.1143%	0.1710%	0.4680%	1.3534%	3.7855%	9.1017%	13.5146%	13.0556%	2.6524%
	Males	2.3127%	0.0627%	0.1146%	0.1562%	0.3238%	0.9595%	3.8859%	12.6398%	21.1312%	22.4651%	3.6134%
	Females	1.8172%	0.0532%	0.1140%	0.1855%	0.5948%	1.6978%	3.7015%	6.3897%	8.2741%	8.6546%	2.0550%
Asian/ Pacific Islander <sup>c</sup>	Both Sexes	1.8421%	0.0631%	0.1247%	0.1789%	0.4388%	1.2640%	2.8924%	5.3976%	8.8455%	10.2471%	1.8928%
	Males	1.6288%	0.0670%	0.1341%	0.1627%	0.2739%	0.6629%	1.7853%	5.0698%	11.0754%	14.8580%	1.9222%
	Females	2.0420%	0.0590%	0.1148%	0.1952%	0.5948%	1.8144%	3.8568%	5.6762%	7.1561%	7.3868%	1.9287%
Hispanic <sup>d</sup>	Both Sexes	1.1836%	0.0738%	0.1603%	0.2112%	0.4946%	1.1892%	2.7498%	6.0169%	9.8943%	9.8695%	1.9915%
	Males	1.0643%	0.0793%	0.1709%	0.2076%	0.3635%	0.6894%	1.9666%	6.3427%	13.6086%	14.8680%	2.2274%
	Females	1.3103%	0.0680%	0.1491%	0.2154%	0.6492%	1.7384%	3.5093%	5.7350%	7.1099%	6.9431%	1.8931%

<sup>a</sup> US 2009 cancer prevalence counts are based on 2009 cancer prevalence proportions from the SEER registries and 1/1/2009 US population estimates based on the average of 2008 and 2009 population estimates from the US Bureau of the Census. Prevalence was calculated using the First Malignant Primary Only for a person.

<sup>b c d</sup> Statistics based on (b) SEER 9 Areas (c) SEER 11 Areas and Rural Georgia (d) NHIA for Hispanic for SEER 11 Areas and Rural Georgia.

<sup>e</sup> Maximum limited-duration prevalence: 34 years for 1975-2009 SEER 9 data; 19 years for 1990-2009 SEER 11 data (used to calculate prevalence for Hispanics and Asian Pacific Islanders).

<sup>f</sup> Percentages are age-adjusted to the 2000 US Standard Population (19 age groups - Census P25-1130) by 5-year age groups.

<sup>g h i</sup> (g) Cases diagnosed more than 34 years ago were estimated using the completeness index method (Capocaccia et. al. 1997, Merrill et. al. 2000). (h) Complete prevalence is obtained by summing 0 to <34 and >=34. (i) Age-specific completeness index was approximated using empirical data from historical Connecticut tumor registry.

- Statistic not shown. Statistic based on fewer than 5 cases estimated alive in SEER for the time interval.

+ Not available.

# SEER Observed Incidence, SEER Delay Adjusted Incidence and US Death Rates<sup>a</sup> All Cancer Sites, by Race and Sex

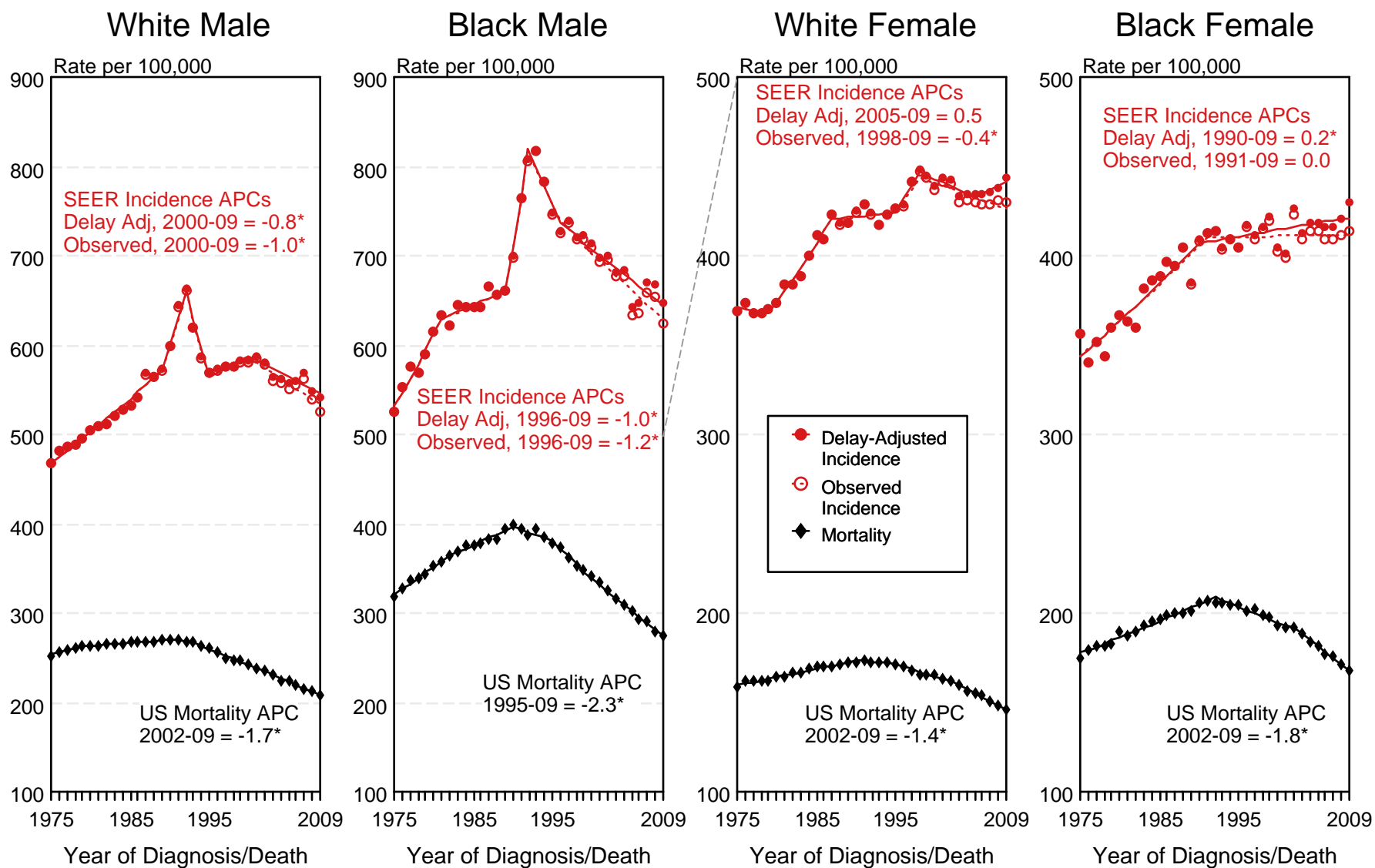


Figure 2.1

<sup>a</sup> Source: SEER 9 areas and US Mortality Files (National Center for Health Statistics, CDC). Rates are age-adjusted to the 2000 US Std Population (19 age groups - Census P25-1103). Regression lines and APCs are calculated using the Joinpoint Regression Program Version 3.5, April 2011, National Cancer Institute. The APC is the Annual Percent Change for the regression line segments. The APC shown on the graph is for the most recent trend.  
\* The APC is significantly different from zero ( $p < 0.05$ ).

# SEER Observed Incidence, SEER Delay Adjusted Incidence and US Death Rates<sup>a</sup> All Cancer Sites, Under 65 Years of Age, by Race and Sex

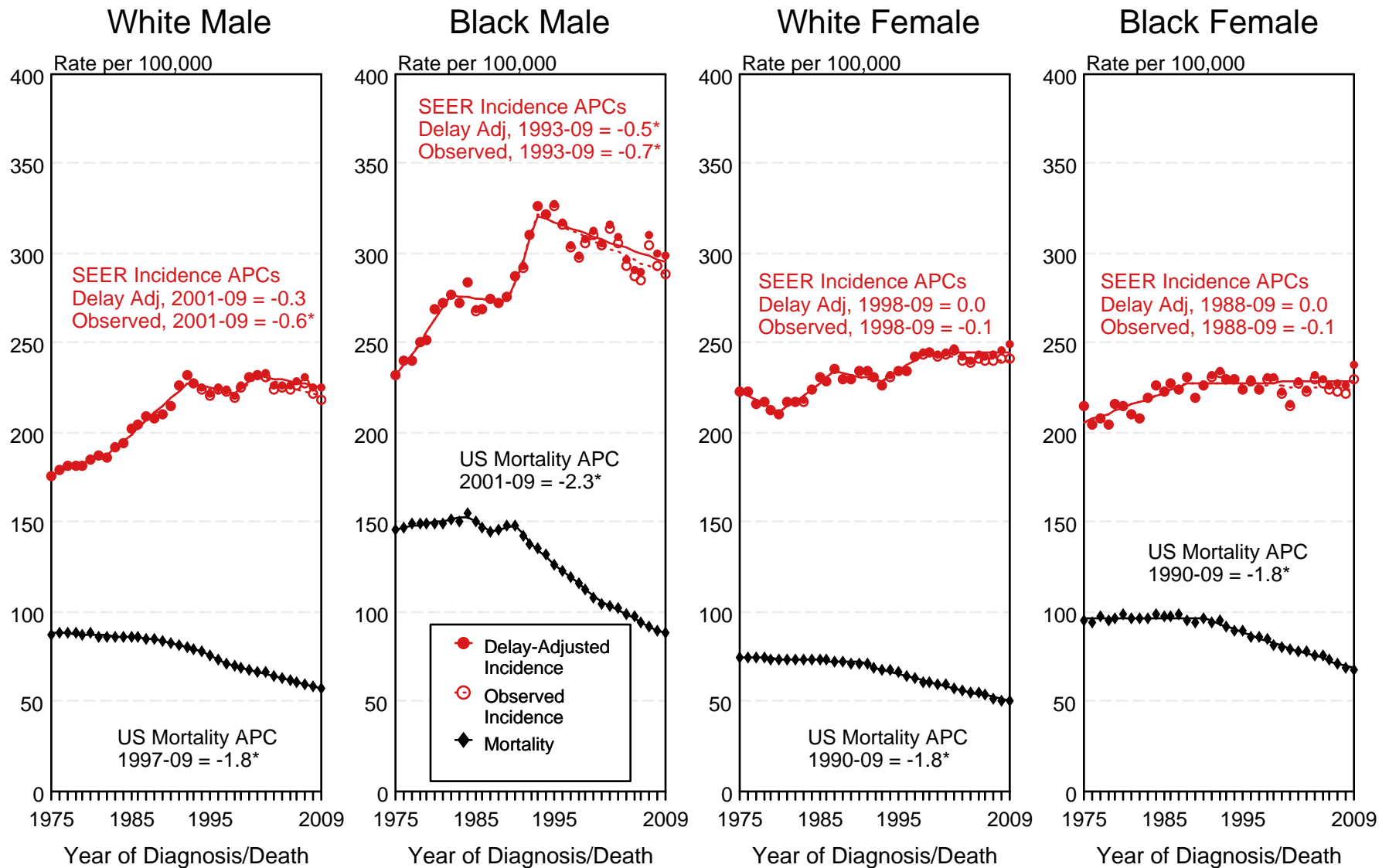


Figure 2.2

<sup>a</sup> Source: SEER 9 areas and US Mortality Files (National Center for Health Statistics, CDC). Rates are age-adjusted to the 2000 US Std Population (19 age groups - Census P25-1103). Regression lines and APCs are calculated using the Joinpoint Regression Program Version 3.5, April 2011, National Cancer Institute. The APC is the Annual Percent Change for the regression line segments. The APC shown on the graph is for the most recent trend.  
\* The APC is significantly different from zero ( $p < 0.05$ ).

# SEER Observed Incidence, SEER Delay Adjusted Incidence and US Death Rates<sup>a</sup> All Cancer Sites, Ages 65 and Over, by Race and Sex

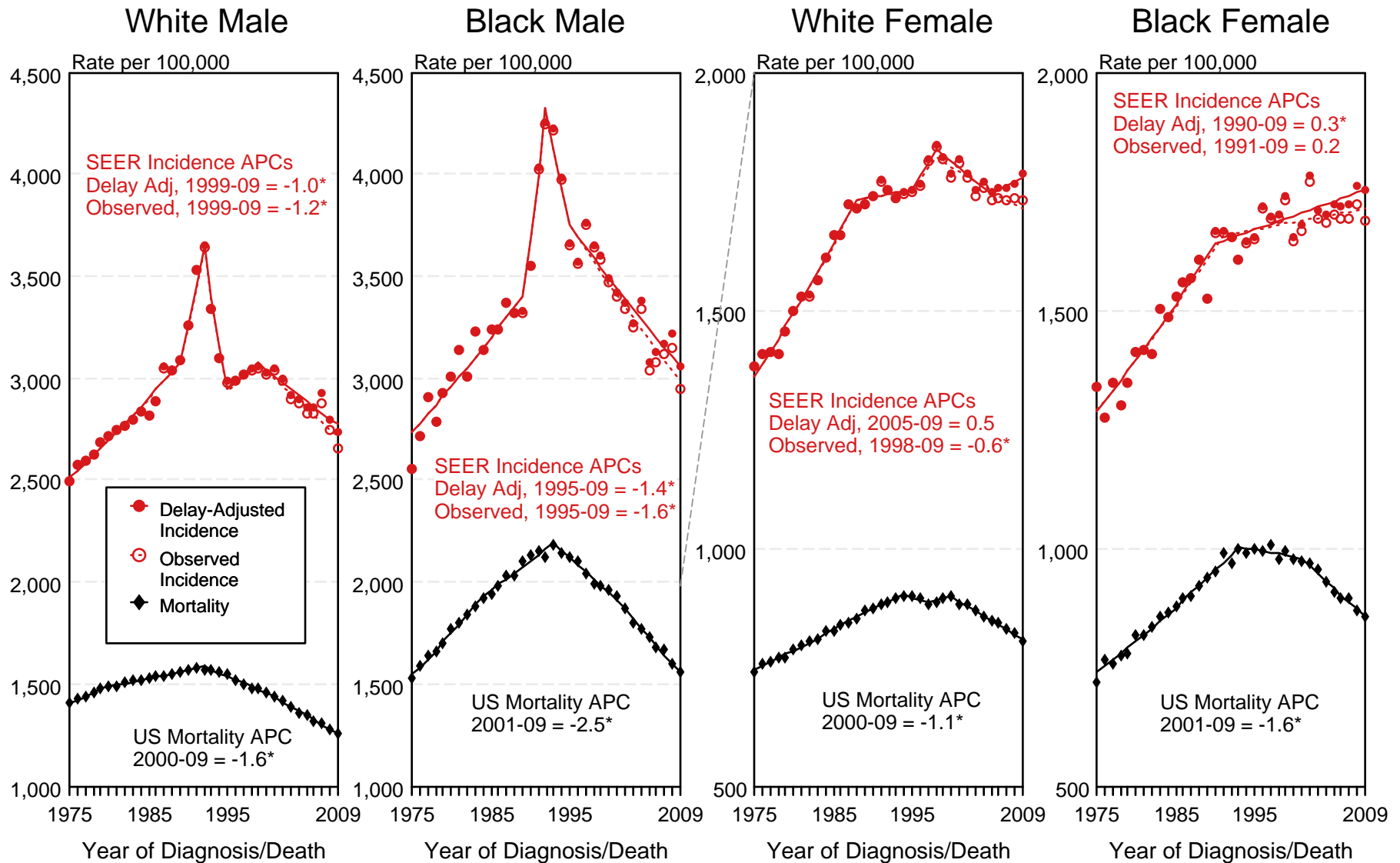


Figure 2.3

<sup>a</sup> Source: SEER 9 areas and US Mortality Files (National Center for Health Statistics, CDC). Rates are age-adjusted to the 2000 US Std Population (19 age groups - Census P25-1103). Regression lines and APCs are calculated using the Joinpoint Regression Program Version 3.5, April 2011, National Cancer Institute. The APC is the Annual Percent Change for the regression line segments. The APC shown on the graph is for the most recent trend.  
\* The APC is significantly different from zero ( $p < 0.05$ ).



# SEER Incidence and US Death Rates<sup>a</sup> All Cancer Sites, Both Sexes

Joinpoint Analyses for Whites and Blacks from 1975-2009

and for Asian/Pacific Islanders, American Indians/Alaska Natives and Hispanics from 1992-2009

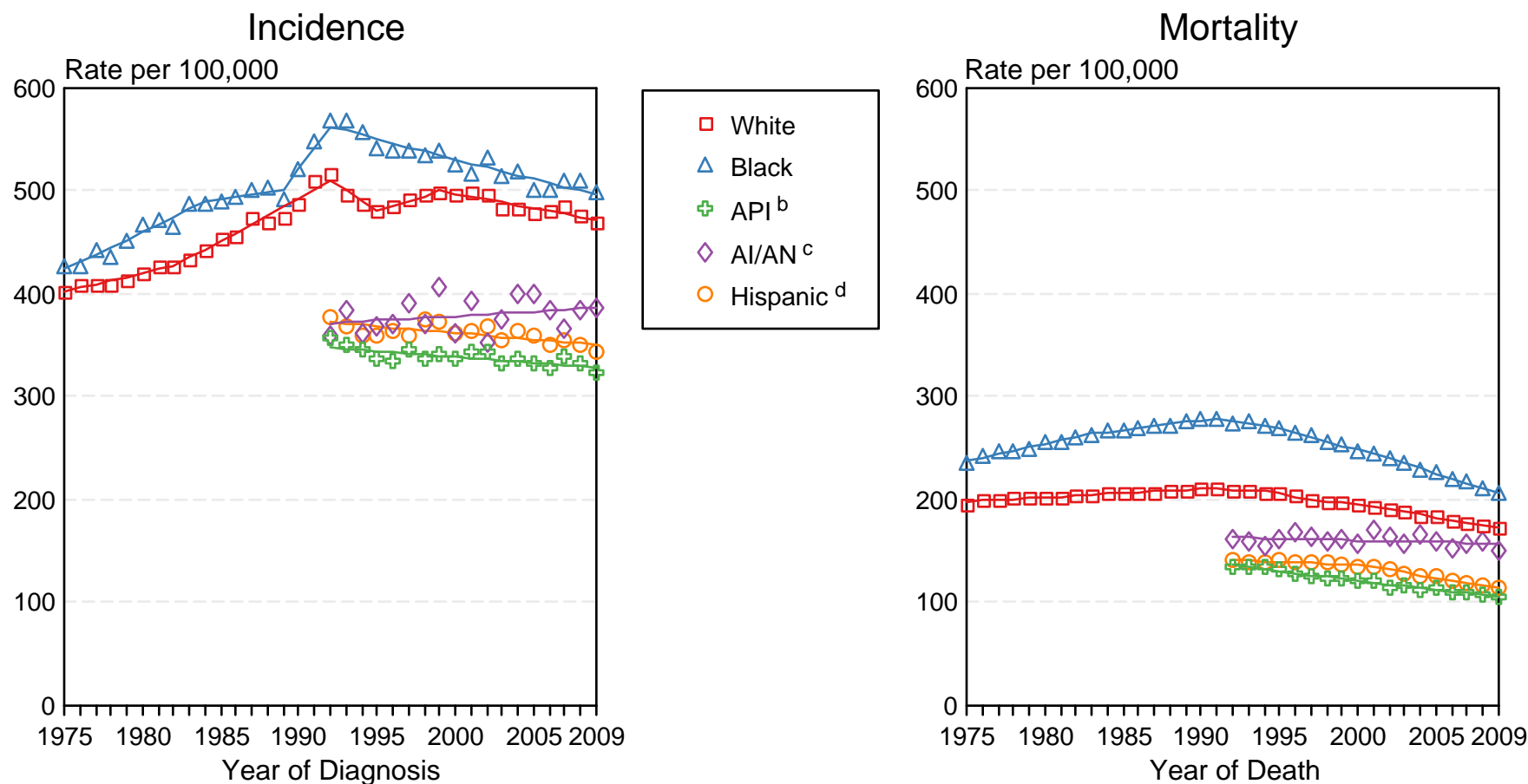


Figure 2.4

Source: Incidence data for whites and blacks are from the SEER 9 areas (San Francisco, Connecticut, Detroit, Hawaii, Iowa, New Mexico, Seattle, Utah, Atlanta). Incidence data for Asian/Pacific Islanders, American Indians/Alaska Natives and Hispanics are from the SEER 13 Areas (SEER 9 Areas, San Jose-Monterey, Los Angeles, Alaska Native Registry and Rural Georgia). Mortality data are from US Mortality Files, National Center for Health Statistics, CDC.

<sup>a</sup> Rates are age-adjusted to the 2000 US Std Population (19 age groups - Census P25-1103).

Regression lines are calculated using the Joinpoint Regression Program Version 3.5, April 2011, National Cancer Institute. Joinpoint analyses for Whites and Blacks during the 1975-2009 period allow a maximum of 5 joinpoints. Analyses for other ethnic groups during the period 1992-2009 allow a maximum of 3 joinpoints.

<sup>b</sup> API = Asian/Pacific Islander.

<sup>c</sup> AI/AN = American Indian/Alaska Native. Rates for American Indian/Alaska Native are based on the CHSDA (Contract Health Service Delivery Area) counties.

<sup>d</sup> Hispanic is not mutually exclusive from whites, blacks, Asian/Pacific Islanders, and American Indians/Alaska Natives. Incidence data for Hispanics are based on NHIA and exclude cases from the Alaska Native Registry. Mortality data for Hispanics exclude cases from Connecticut, the District of Columbia, Maine, Maryland, Minnesota, New Hampshire, New York, North Dakota, South Carolina, Oklahoma, and Vermont.

# SEER Observed Incidence and SEER Delay Adjusted Incidence Rates<sup>a</sup> SEER 9 Areas Compared to SEER 13 Areas All Cancer Sites, Males, by Race

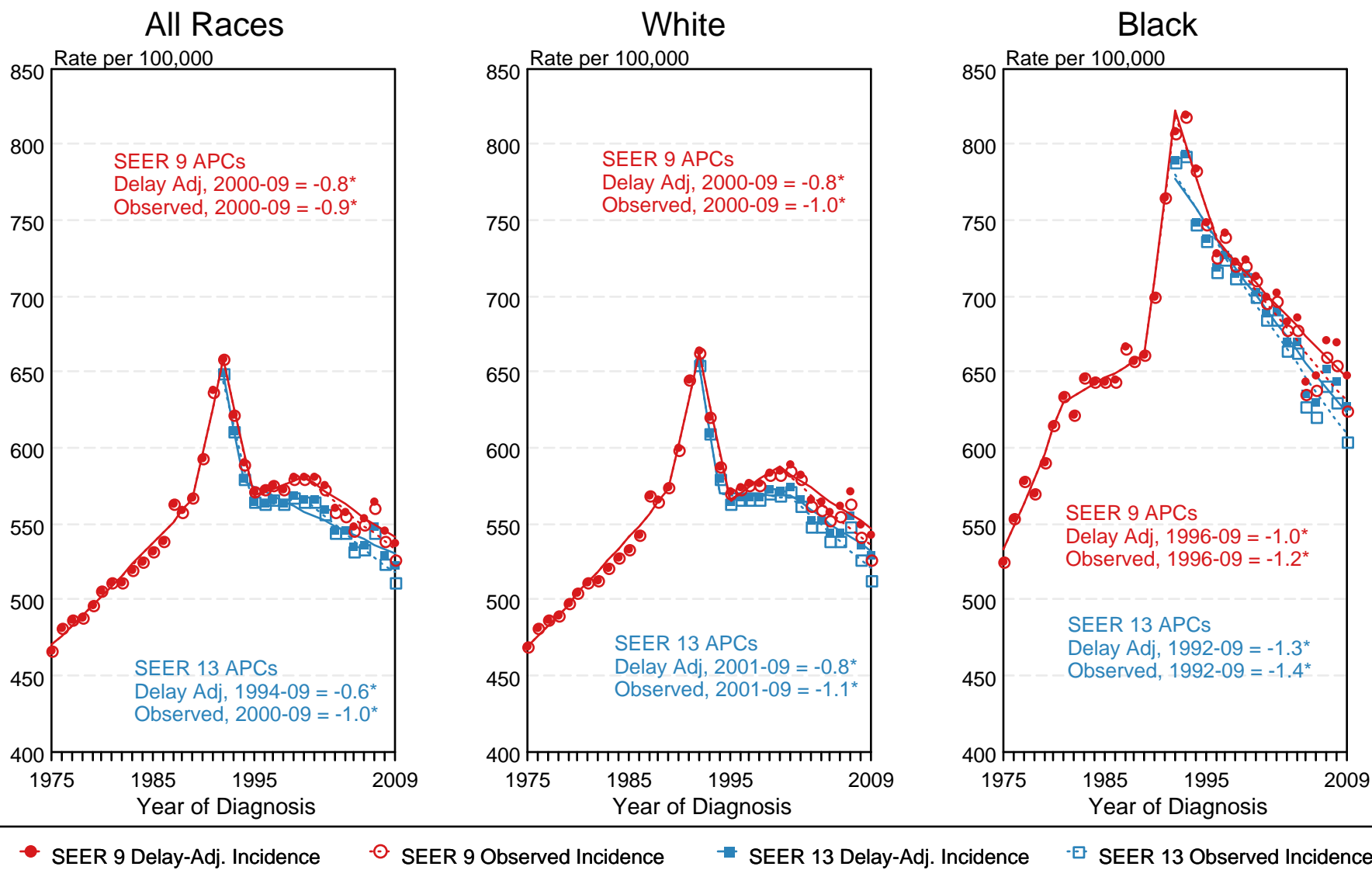


Figure 2.5

<sup>a</sup> Source: SEER 9 areas and SEER 13 areas.  
Rates are age-adjusted to the 2000 US Std Population (19 age groups - Census P25-1103).  
Regression lines and APCs are calculated using the Joinpoint Regression Program Version 3.5, April 2011, National Cancer Institute.  
The APC is the Annual Percent Change for the regression line segments. The APC shown on the graph is for the most recent trend.  
\* The APC is significantly different from zero ( $p < 0.05$ ).

# SEER Observed Incidence and SEER Delay Adjusted Incidence Rates<sup>a</sup> SEER 9 Areas Compared to SEER 13 Areas All Cancer Sites, Female, by Race

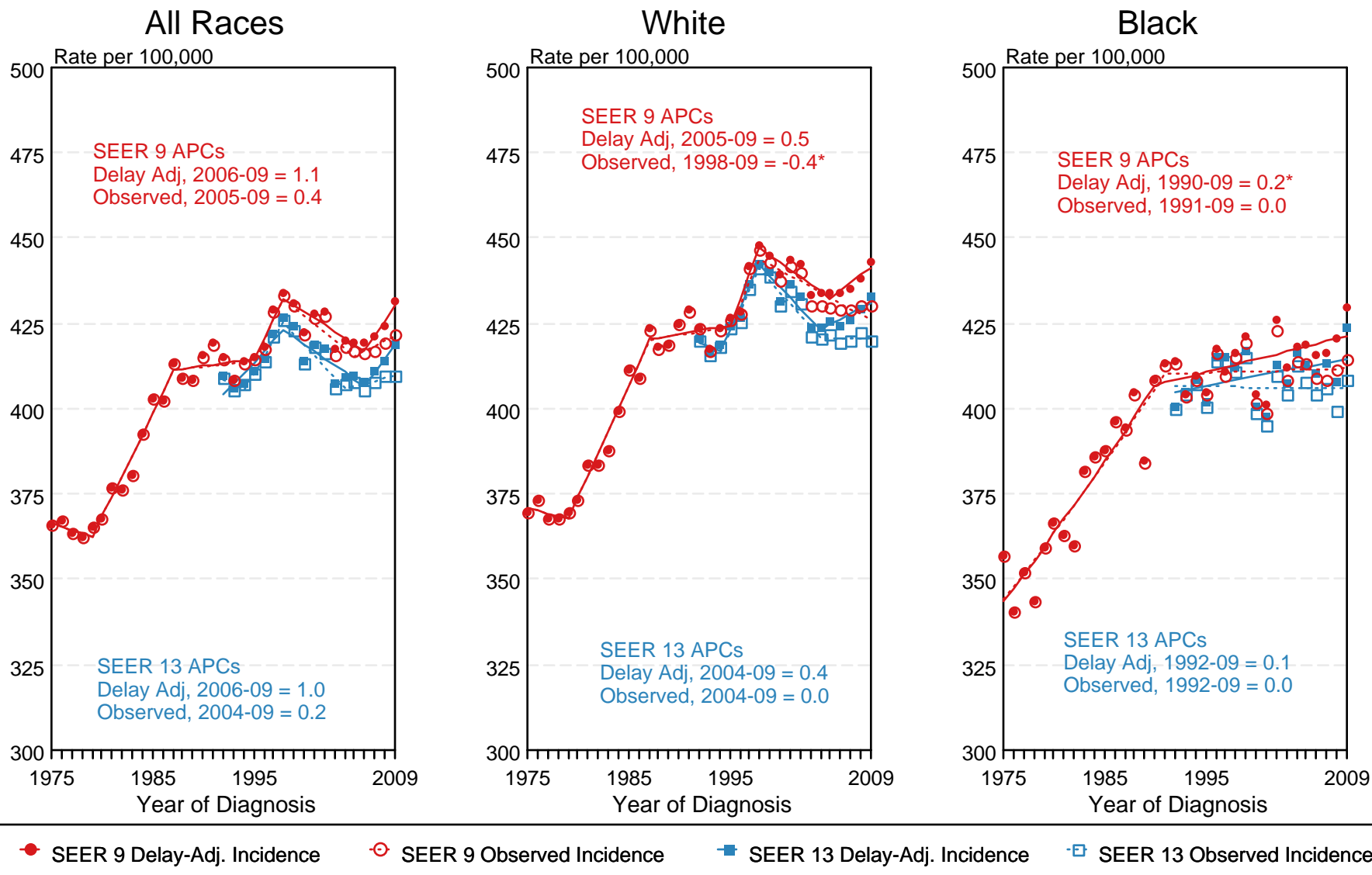


Figure 2.6

<sup>a</sup> Source: SEER 9 areas and SEER 13 areas.  
 Rates are age-adjusted to the 2000 US Std Population (19 age groups - Census P25-1103).  
 Regression lines and APCs are calculated using the Joinpoint Regression Program Version 3.5, April 2011, National Cancer Institute.  
 The APC is the Annual Percent Change for the regression line segments. The APC shown on the graph is for the most recent trend.  
 \* The APC is significantly different from zero ( $p < 0.05$ ).