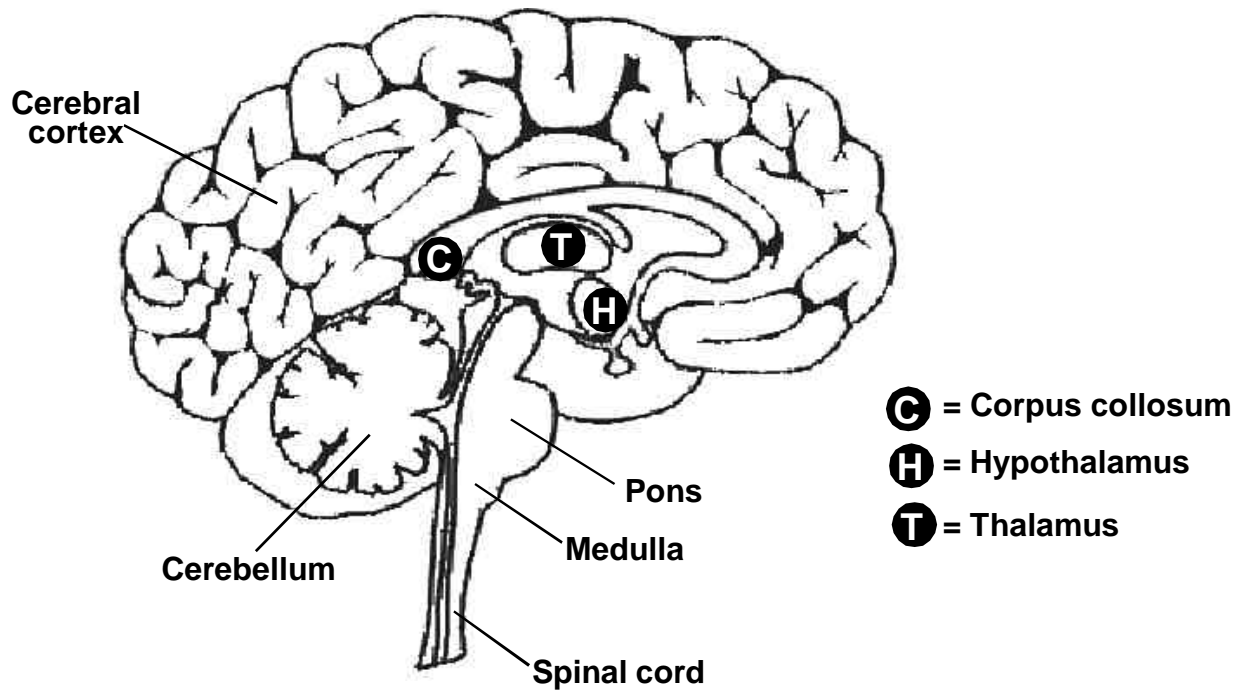
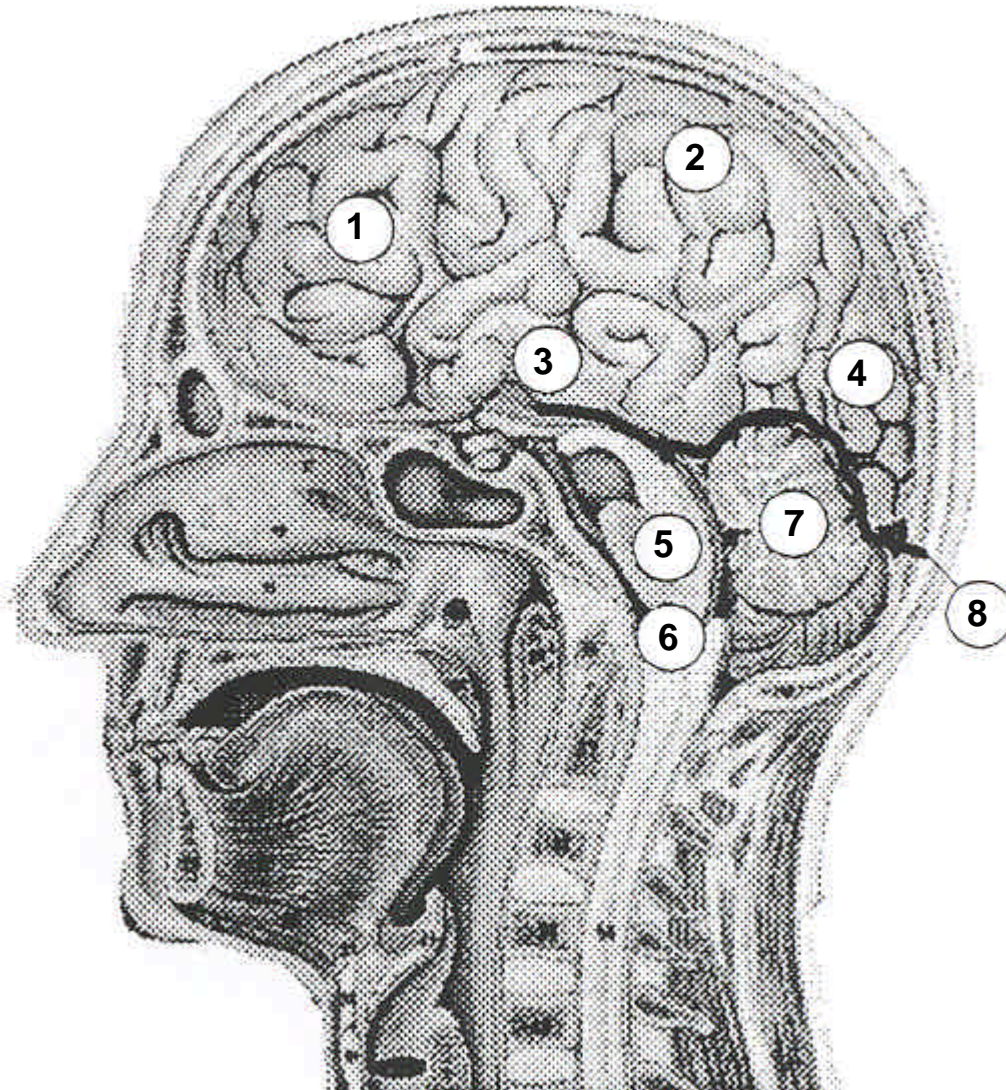


**ANATOMIC DRAWINGS OF THE BRAIN AND  
CENTRAL NERVOUS SYSTEM**



**SAGITTAL CUT THROUGH THE  
BRAIN AND BRAIN STEM**

**ANATOMIC DRAWINGS OF THE BRAIN AND  
CENTRAL NERVOUS SYSTEM**



**SAGITTAL CUT THROUGH THE HUMAN HEAD  
WITH CEREBRUM IN PLACE**

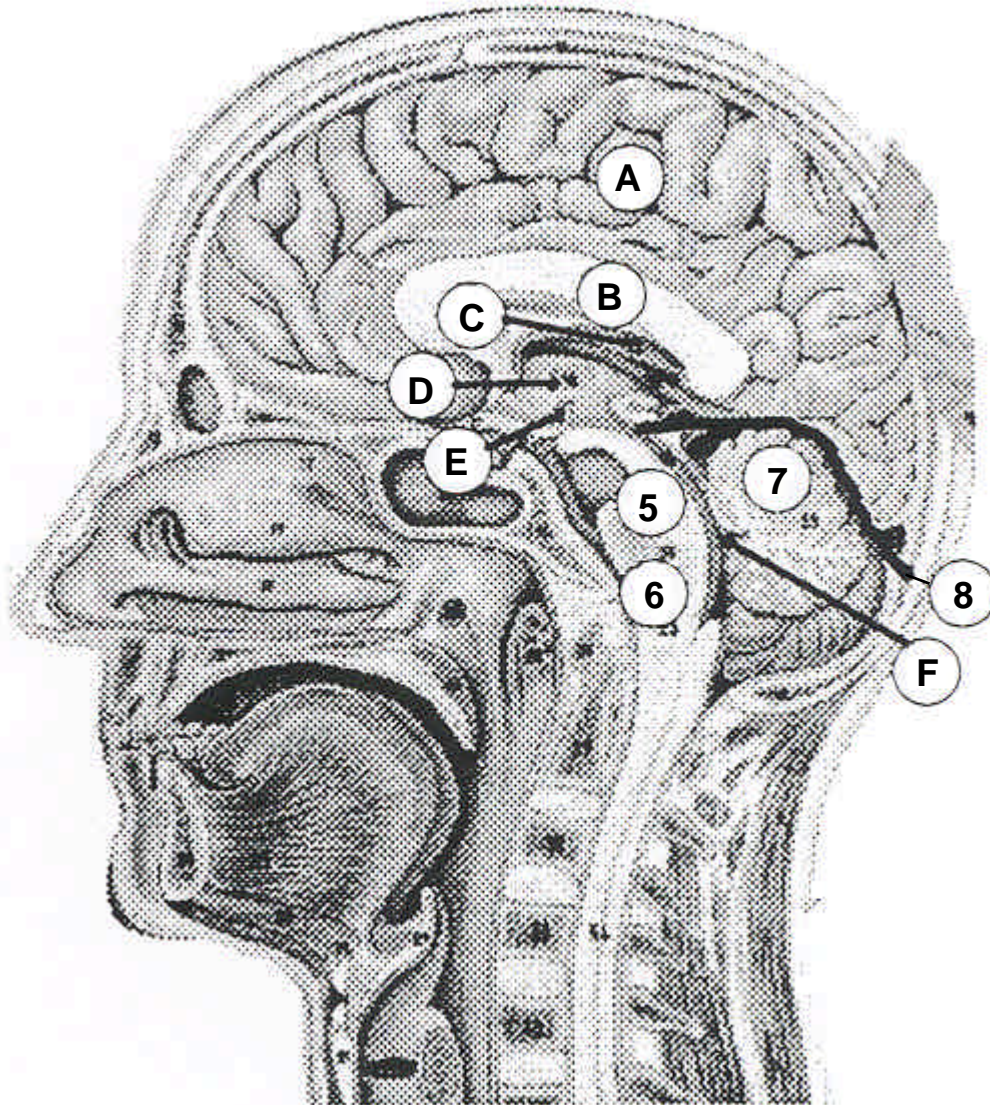
**The cerebrum is comprised of the:**

- 1 Frontal lobe**
- 2 Parietal lobe**
- 3 Temporal lobe**
- 4 Occipital lobe**

**Other parts of the brain include:**

- 5 Pons**
- 6 Medulla (oblongata)**
- 7 Cerebellum**
- 8 Tentorium (cerebelli)**

## ANATOMIC DRAWINGS OF THE BRAIN AND CENTRAL NERVOUS SYSTEM



### SAGITTAL CUT THROUGH THE HUMAN HEAD

#### Internal anatomy of the brain:

- A Inner surface of right hemisphere of cerebrum
- B Corpus callosum
- C Velum interpositum
- D Middle commissure
- E Third ventricle
- F Fourth ventricle

#### Other parts of the brain (as on previous drawing):

- 5 Pons
- 6 Medulla (oblongata)
- 7 Cerebellum
- 8 Tentorium (cerebelli)

## **BRAIN AND CEREBRAL MENINGES**

C70.0, C71.0-C71.9

Supratentorial (S) or Infratentorial (I)

C70.0 Cerebral meninges

C71.0 Cerebrum ☞ (S)

C71.1 Frontal lobe (S)

C71.2 Temporal lobe (S)

C71.3 Parietal lobe (S)

C71.4 Occipital lobe (S)

C71.5 Ventricle, NOS (S)

C71.6 Cerebellum, NOS (I)

C71.7 Brain stem (I)

C71.8 Overlapping lesion of brain ☞

C71.9 Brain, NOS ☞

☞ See Note 1.

## **SUMMARY STAGE**

### **1 Localized only**

Supratentorial tumor confined to:

**Cerebral hemisphere** (cerebrum) or **meninges of cerebral hemisphere** on one side:

Frontal lobe

Occipital lobe

Parietal lobe

Temporal lobe

More than one lobe in same hemisphere

Infratentorial tumor confined to:

**Cerebellum** or **meninges of cerebellum** on one side:

Vermis:

Lateral lobes

Median lobe of cerebellum

**Brain stem** or **meninges of brain stem** on one side:

Medulla oblongata

Midbrain (mesencephalon)

Pons

**Both cerebellum and brain stem** involved WITH tumor on one side

Hypothalamus

Thalamus

Confined to brain, NOS

Confined to meninges, NOS

Confined to ventricles

Tumor invades or encroaches upon ventricular system

**BRAIN AND CEREBRAL MENINGES**  
C70.0, C71.0-C71.9

**5 Regional, NOS**

Infratentorial tumor extends supratentorially to involve cerebrum (cerebral hemisphere)

Supratentorial tumor extends infratentorially to involve cerebellum or brain stem

Tumor crosses the midline

Tumor invades:

Bone (skull)

Major blood vessel(s)

Meninges (dura)

Nerves, NOS:

Cranial nerves

Spinal cord/canal

Tumor involves contralateral hemisphere

Tumor involves corpus callosum including splenium.

**7 Distant site(s)/lymph node(s) involved**

Distant lymph node(s)

Extension to:

Nasal cavity

Nasopharynx

Posterior pharynx

Outside central nervous system (CNS)

Circulating cells in cerebral spinal fluid (CSF)

Further contiguous extension

Metastasis:

“Drop” metastasis

**9 Unknown if extension or metastasis**

**Note:** Codes 0, 2, 3, and 4 are not applicable for this scheme.

**Note 1:** The following subsites coded to C71.0 are INFRAtentorial: hypothalamus, pallium, thalamus. The following subsites coded to C71.8 are SUPRAtentorial: corpus callosum, tapetum. The following sites coded to C71.9 are SUPRAtentorial: anterior cranial fossa, middle cranial fossa, suprasellar; the following subsites coded to C71.9 are INFRAtentorial: posterior cranial fossa.

**Note 2:** This scheme is compatible with the AJCC *Cancer Staging Manual, Fourth Edition* for brain. The AJCC opted not to recommend a TNM scheme for brain in the fifth edition.

## **OTHER PARTS OF CENTRAL NERVOUS SYSTEM**

C70.1, C70.9, C72.0-C72.5, C72.8-C72.9

C70.1 Spinal meninges

C70.9 Meninges, NOS

C72.0 Spinal cord

C72.1 Cauda equina

C72.2 Olfactory nerve

C72.3 Optic nerve

C72.4 Acoustic nerve

C72.5 Cranial nerve, NOS

C72.8 Overlapping lesion of brain and central nervous system

C72.9 Nervous system, NOS

## **SUMMARY STAGE**

### **1 Localized only**

Tumor confined to tissue or site of origin

Localized, NOS

### **5 Regional, NOS**

Adjacent connective/soft tissue

Adjacent muscle

Brain **for cranial nerve tumors**

Major blood vessel(s)

Meningeal tumor infiltrates nerve

Nerve tumor infiltrates meninges (dura)

Sphenoid and frontal sinuses (skull)

### **7 Distant site(s)/lymph node(s) involved**

Distant lymph node(s)

Bone **other than skull**

Brain **except for cranial nerve tumors**

Eye

Further contiguous extension

Metastasis

### **9 Unknown if extension or metastasis**

**Note:** Codes 0, 2, 3, and 4 are not applicable for this scheme.