



# NCVHS

## Session 2

# Lag Measures

Tier 1 Measures			
Measure	Baseline	Target	Source
<b>Tier 1a Incidence of complications of high blood pressure</b>			
The incidence of heart attacks	514 per 100,000		SPARCS*
The incidence of stroke	316 per 100,000		SPARCS
The incidence of heart failure	424 per 100,000		SPARCS
The incidence of kidney failure New dialysis starts per year	47 per 100,000		NYS Dialysis Registry
<b>Tier 1b The cost of care of high blood pressure</b>			
The cost of care per patient per year for those diagnosed with high blood pressure			Health Plan Claims
<b>Tier 1c The control of high blood pressure</b>			
The percentage of adults with high blood pressure who are in control	64%	85%	Community Registry

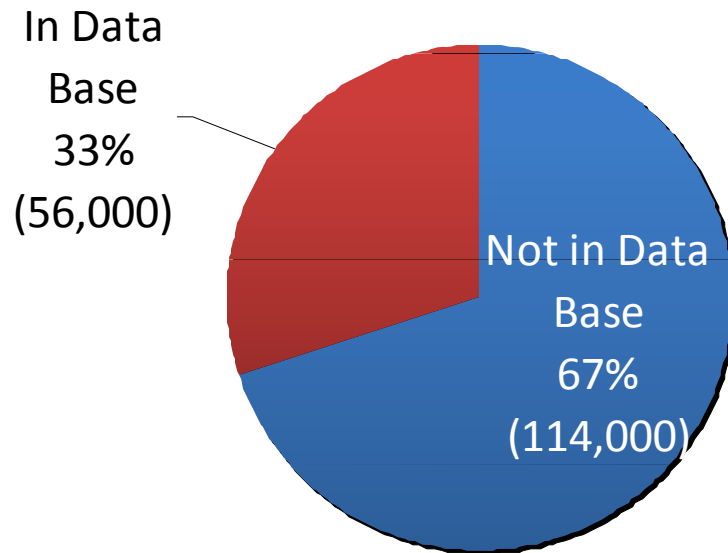
\* Statewide Planning and Research Cooperative

# Lead Measures

- Adults who know their blood pressure and know whether it is normal, pre-hypertensive or high.
- Adults with hypertension or pre-hypertension who have developed a management plan in partnership with a health care provider.
- Adults who get their blood pressure checked regularly.
- People with HBP under a doctor's care.
- Attitudes that prevent individuals from seeking care or implementing strategies for management of elevated blood pressure.
- Practicing general internists and family physicians (and secondarily, general cardiologists, endocrinologists and OB/GYNs) actively engaged in the high blood pressure quality and process improvement program.

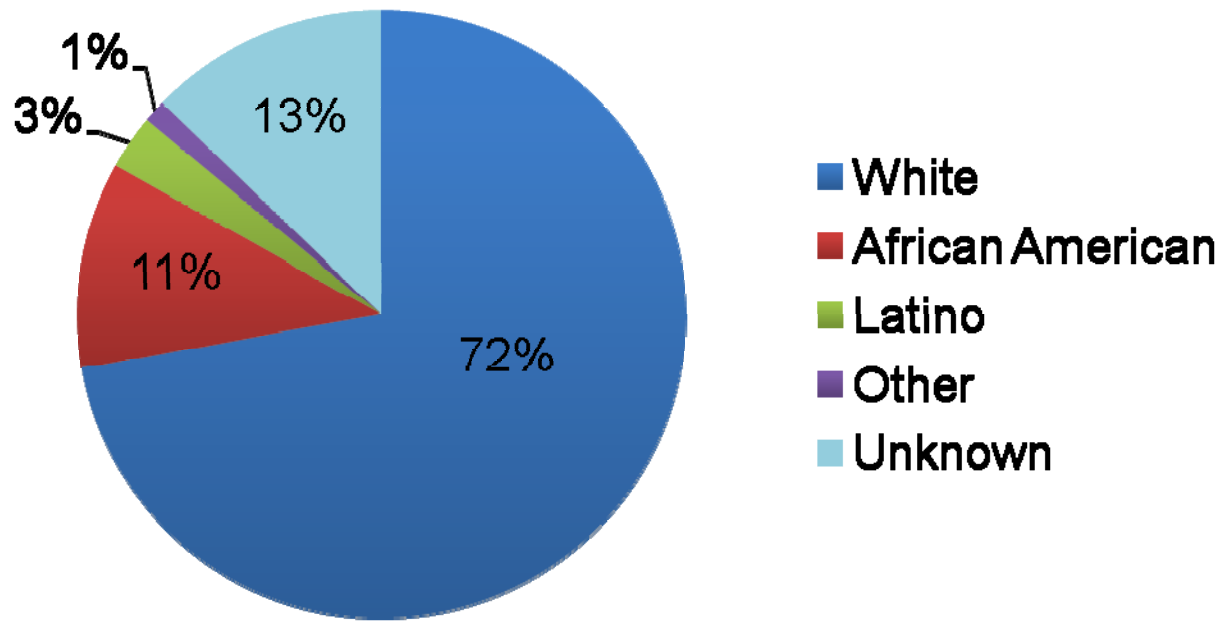
# HBP Community Data Base

## People with High Blood Pressure in Monroe County



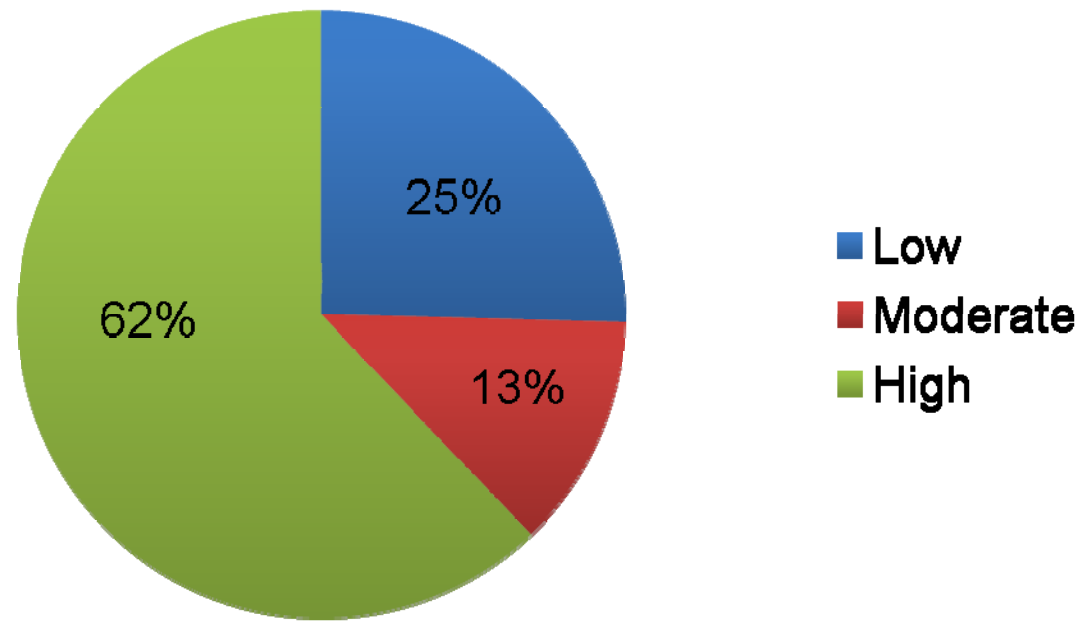
# HBP Community Data Base

## Race/Ethnicity



# HBP Community Data Base

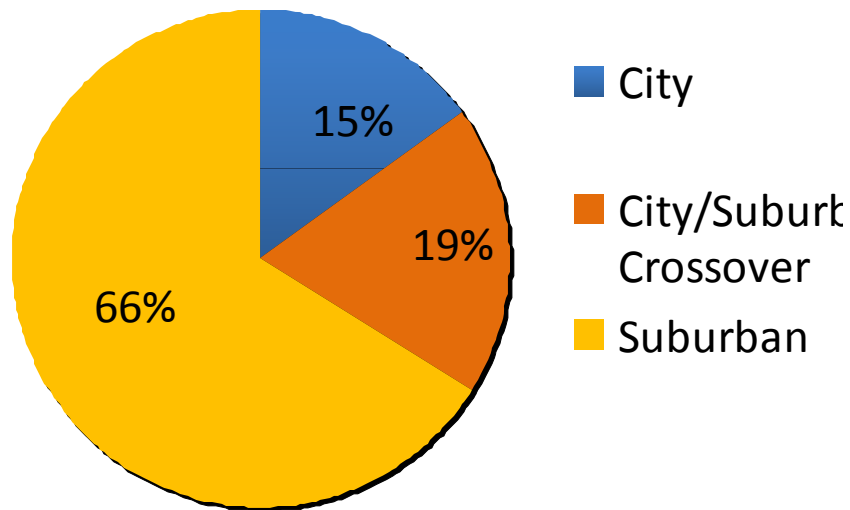
## Socioeconomic Status



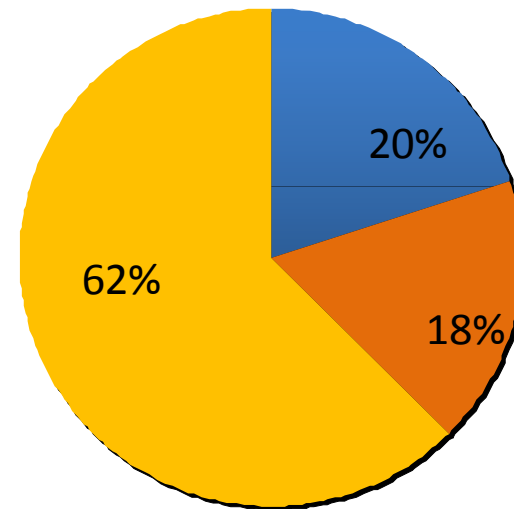
*\* Based on education, housing, employment, and poverty level of the patient's zip code*

# HBP Community Data Base Comparison

Data Base Patient Residences

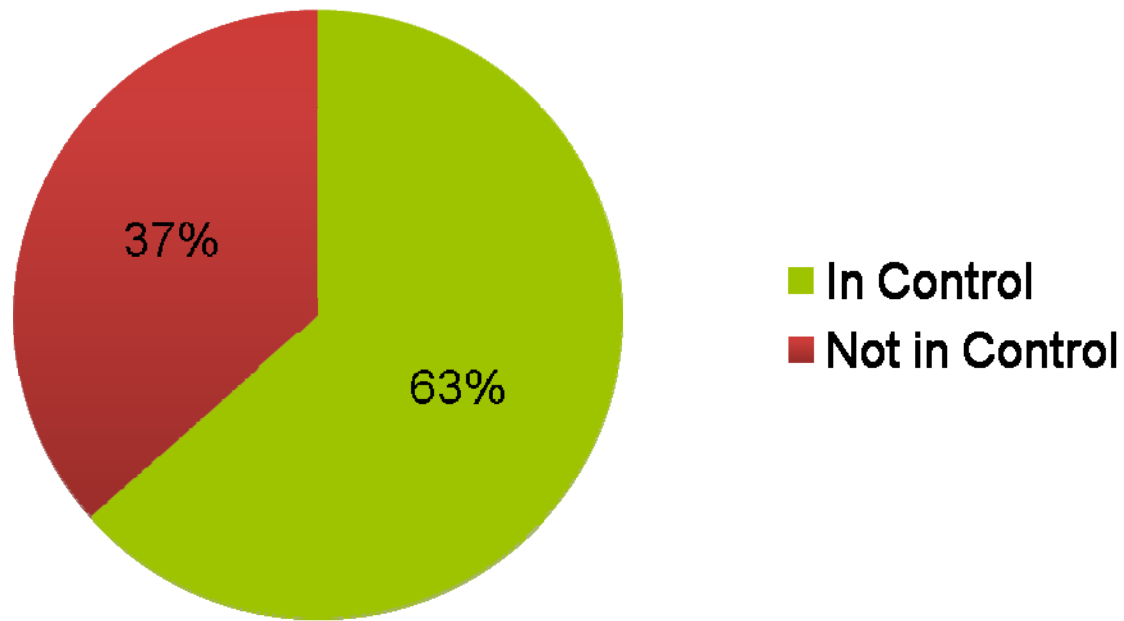


Monroe County Population



# HBP Community Data Base

## Patients with High Blood Pressure



*\* Of those with a blood pressure reading during the last 13 months*



