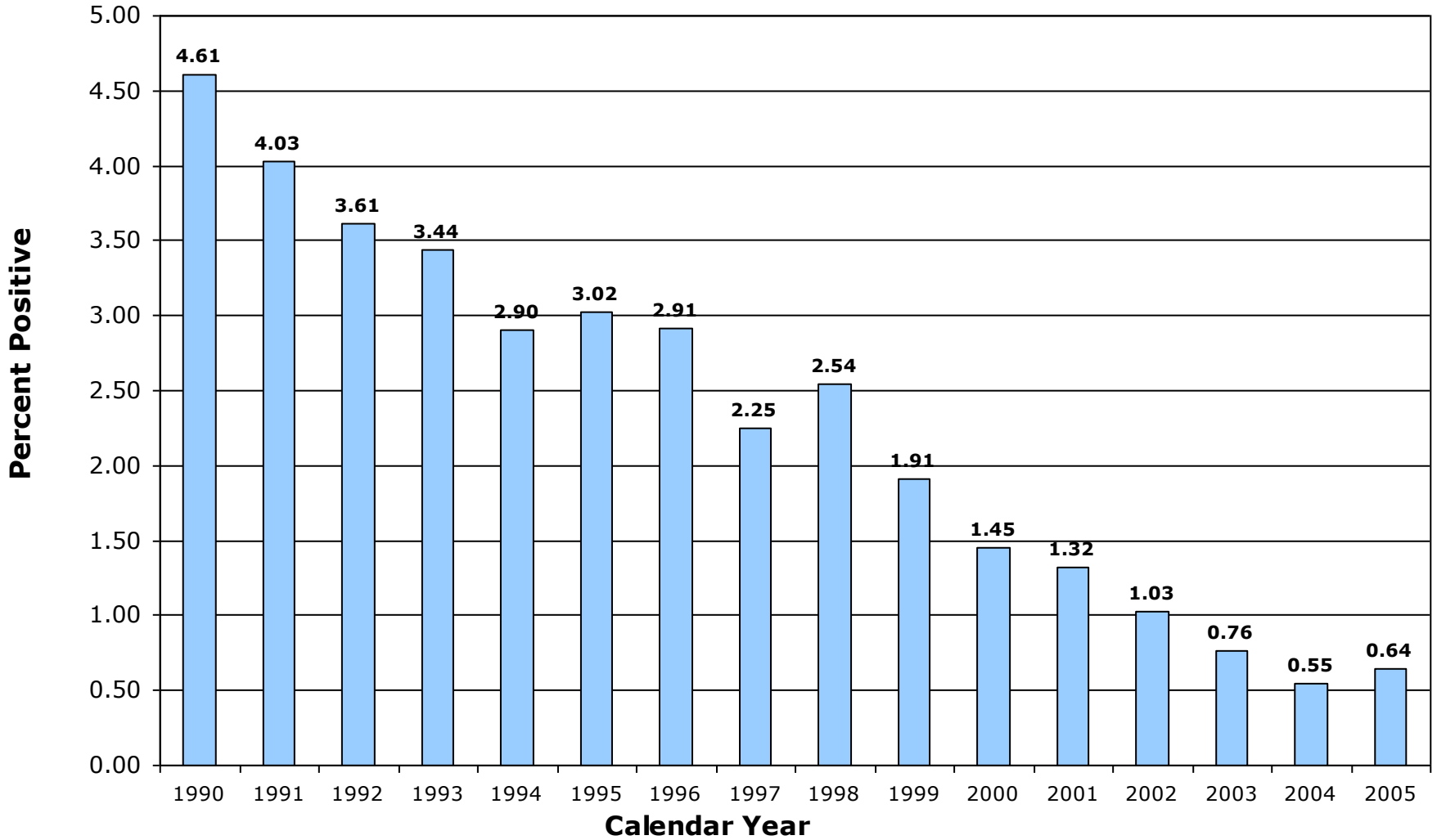
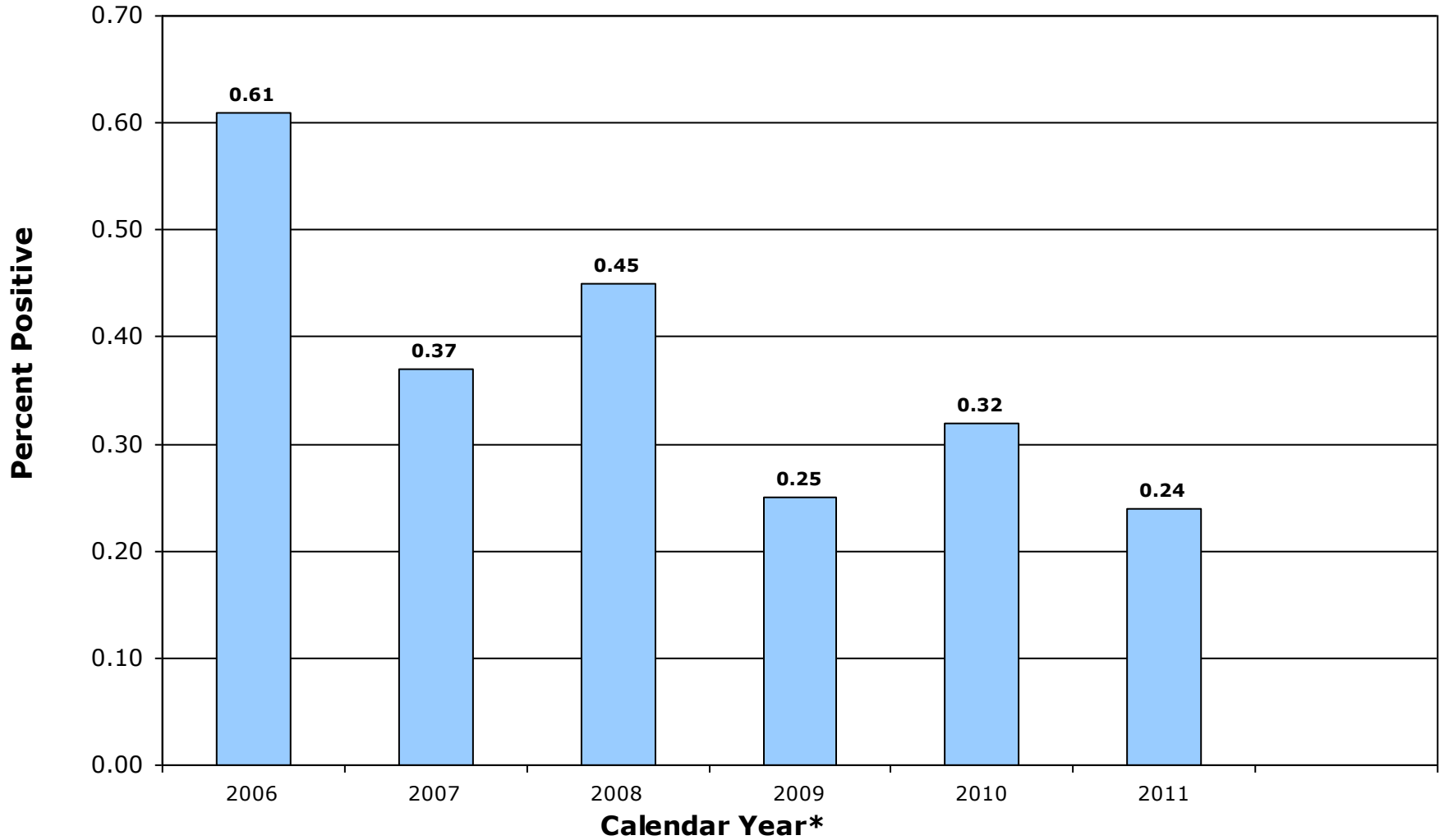


# FSIS Regulatory Testing for LM in RTE Products by Calendar Year 1990 - 2005 (2004 - 2005 ALLRTE Only)



# FSIS Regulatory Testing for LM in RTE Products by Calendar Year 2006 - 2011\* (ALLRTE Only)



\*Starting with CY2008, annual microbiological results are reported by sample collection date as opposed to analysis end date.