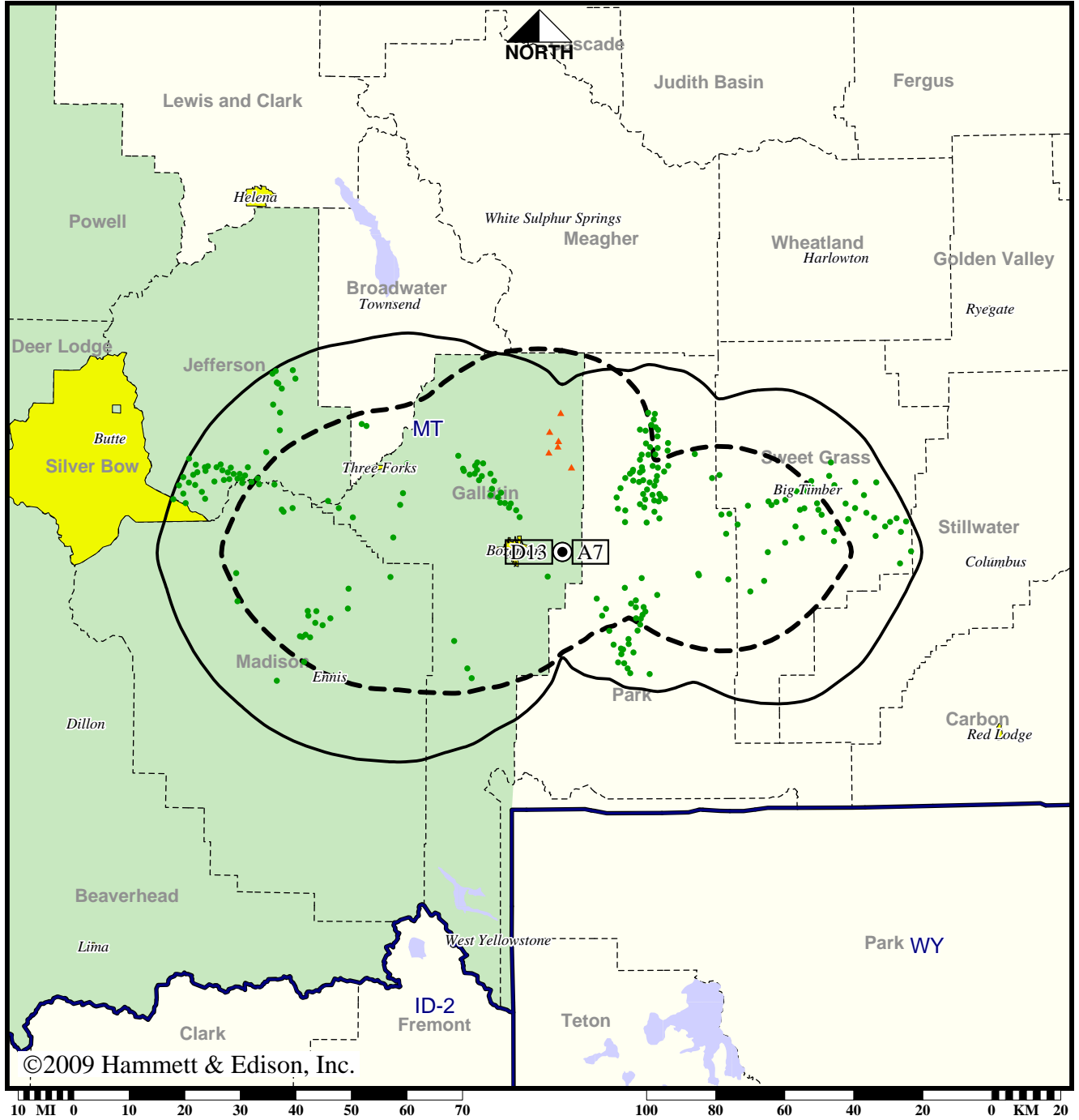


TV Station KBZK • Analog Channel 7, DTV Channel 13 • Bozeman, MT

Expected Operation on June 13: Licensed

Digital License (solid): 18.9 kW ERP at 271 m HAAT, Network: CBS
 vs. Analog (dashed): 43.7 kW ERP at 249 m HAAT, Network: CBS

Market: Butte-Bozeman, MT



©2009 Hammett & Edison, Inc.

- Coverage gained after DTV transition
- No symbol = no change in coverage
- ▲ Coverage lost after DTV transition

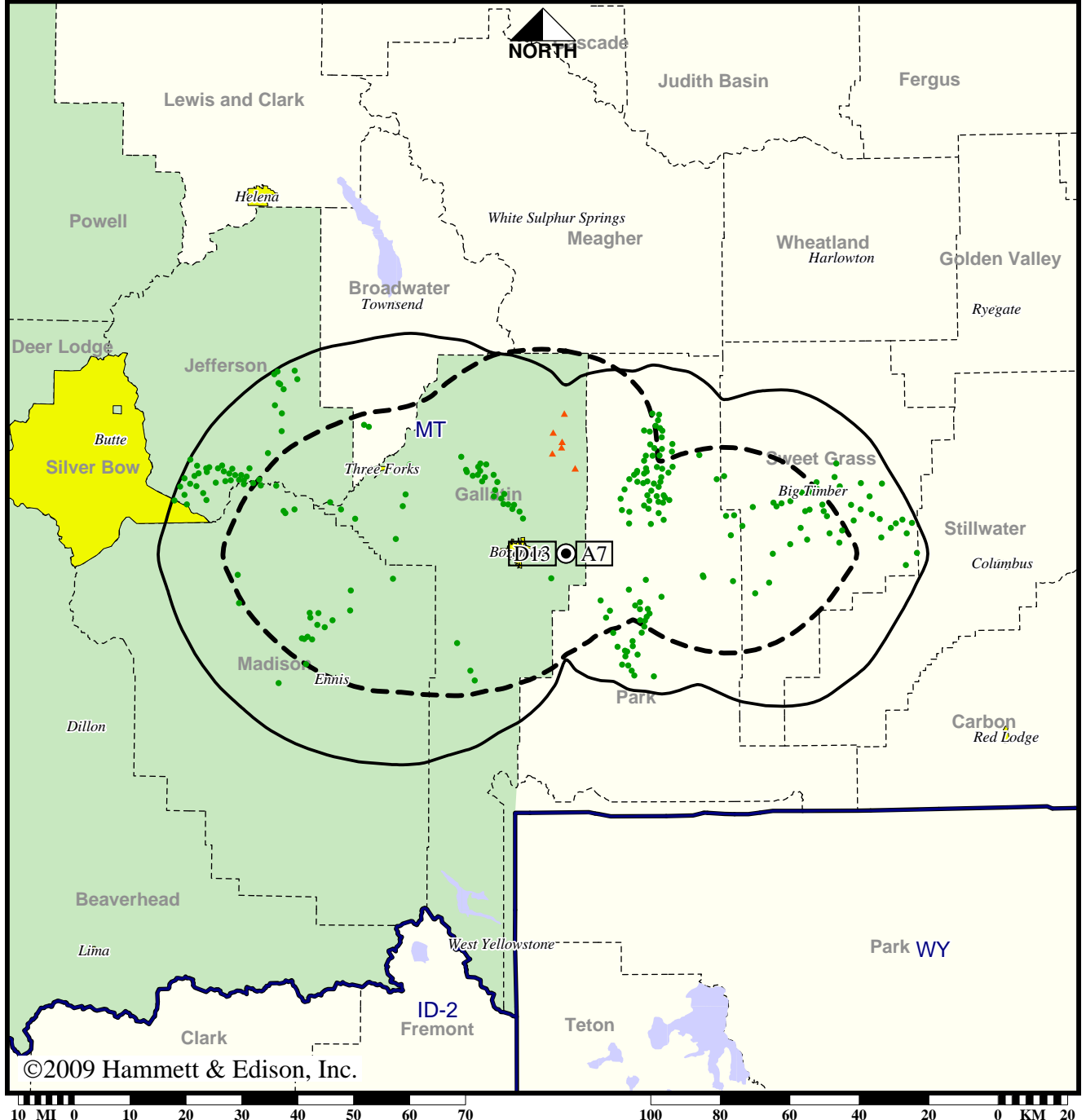
Analog service	73,958 persons
Digital service	81,865
Analog loss	86
Digital gain	7,993
Net gain	7,907

TV Station KBZK • Analog Channel 7, DTV Channel 13 • Bozeman, MT

Approved Post-Transition Operation: Licensed

Digital License (solid): 18.9 kW ERP at 271 m HAAT, Network: CBS
 vs. Analog (dashed): 43.7 kW ERP at 249 m HAAT, Network: CBS

Market: Butte-Bozeman, MT



©2009 Hammett & Edison, Inc.

- Coverage gained after DTV transition
- No symbol = no change in coverage
- ▲ Coverage lost after DTV transition

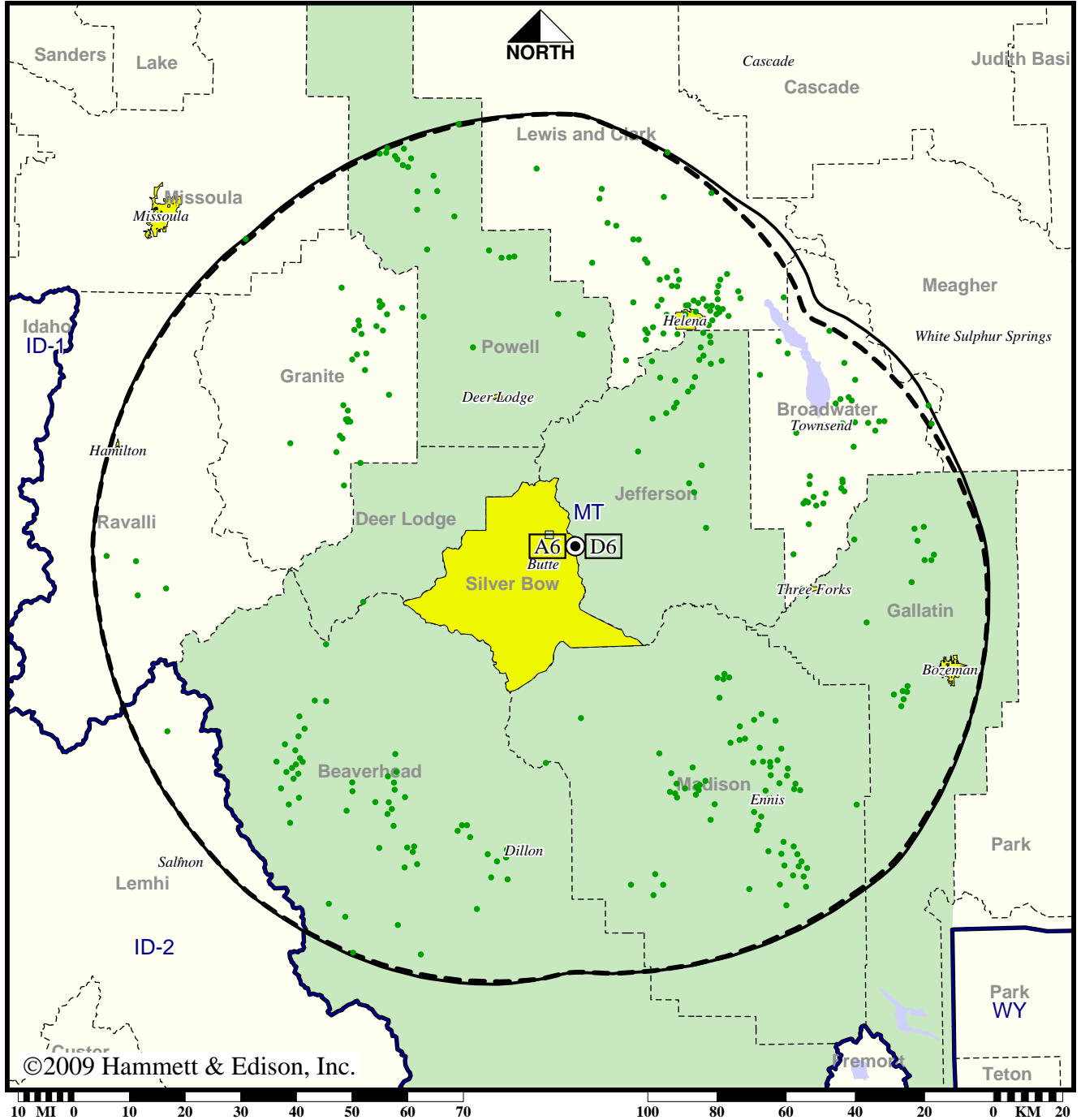
Analog service	73,958 persons
Digital service	81,865
Analog loss	86
Digital gain	7,993
Net gain	7,907

TV Station KTVM • Analog Channel 6, DTV Channel 6 • Butte, MT

Expected Operation on June 13: Granted Construction Permit

Digital CP (solid): 11.2 kW ERP at 591 m HAAT, Network: NBC
 vs. Analog (dashed): 100 kW ERP at 591 m HAAT, Network: NBC

Market: Butte-Bozeman, MT



©2009 Hammett & Edison, Inc.

● Coverage gained after DTV transition
 No symbol = no change in coverage

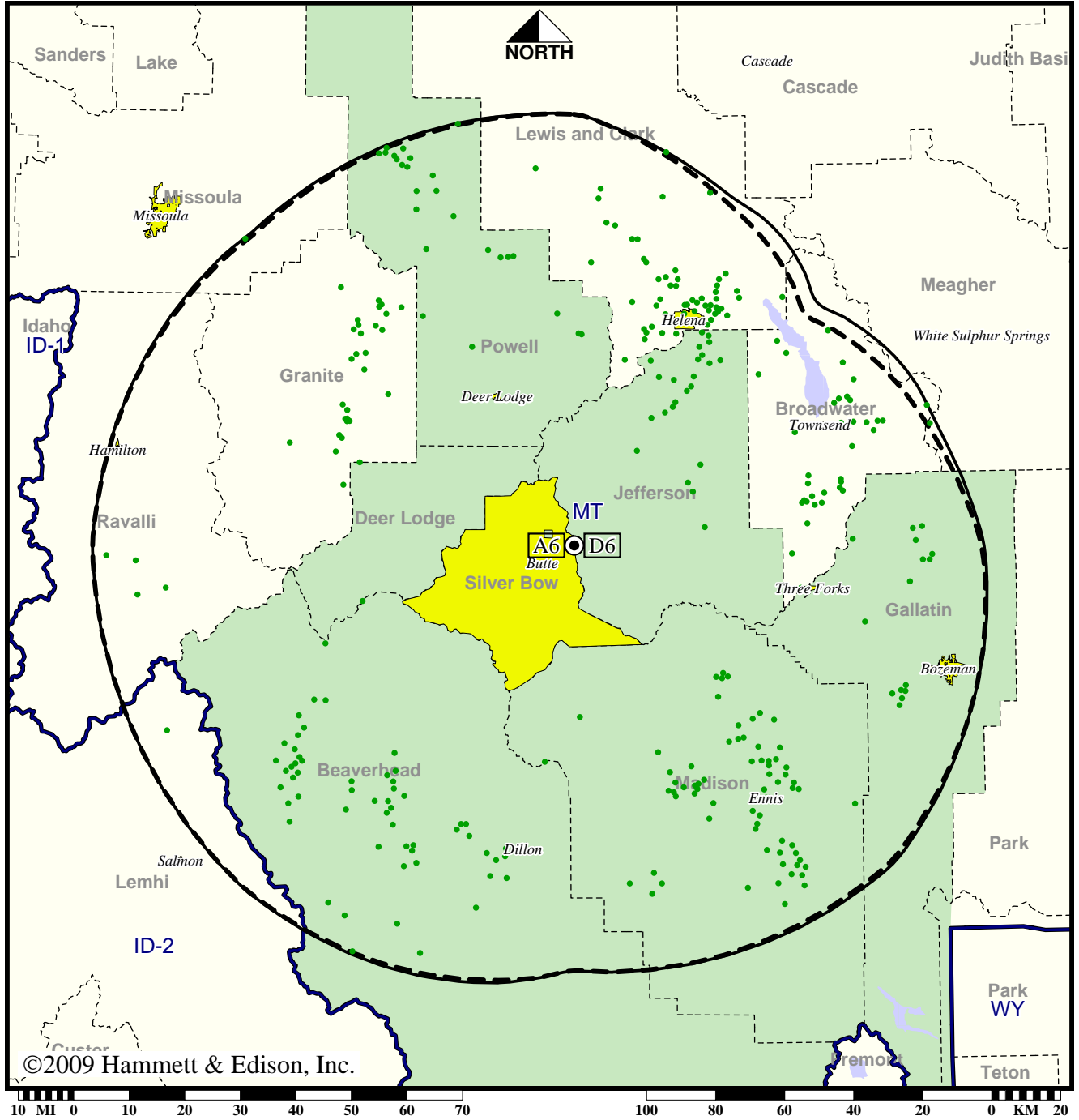
Analog service	144,332 persons
Digital service	161,588
Analog loss	0
Digital gain	17,256
Net gain	17,256

TV Station KTVM • Analog Channel 6, DTV Channel 6 • Butte, MT

Approved Post-Transition Operation: Granted Construction Permit

Digital CP (solid): 11.2 kW ERP at 591 m HAAT, Network: NBC
 vs. Analog (dashed): 100 kW ERP at 591 m HAAT, Network: NBC

Market: Butte-Bozeman, MT



©2009 Hammett & Edison, Inc.

● Coverage gained after DTV transition
 No symbol = no change in coverage

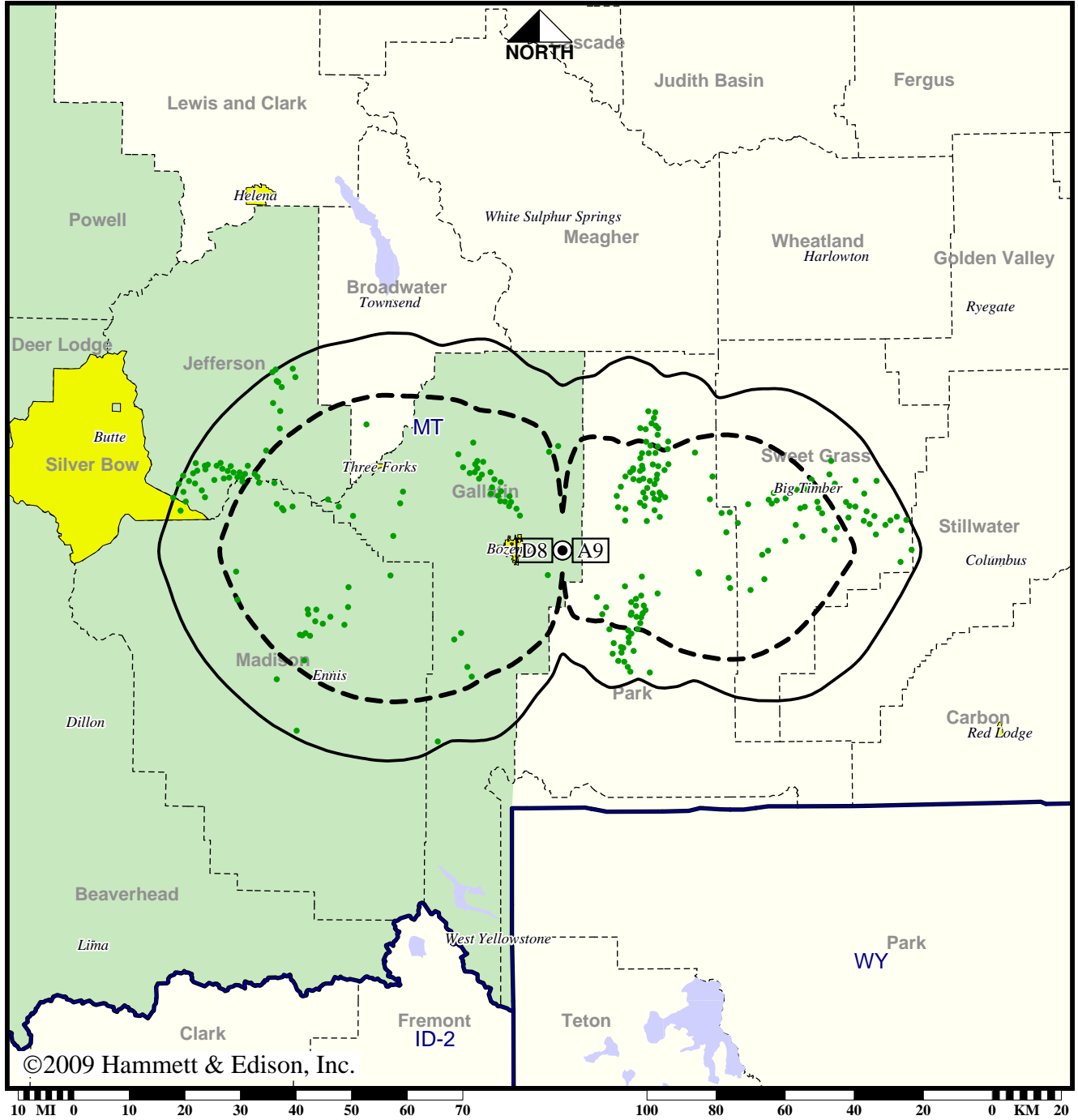
Analog service	144,332 persons
Digital service	161,588
Analog loss	0
Digital gain	17,256
Net gain	17,256

TV Station KUSM • Analog Channel 9, DTV Channel 8 • Bozeman, MT

Expected Operation on June 13: Licensed

Digital License (solid): 17.9 kW ERP at 271 m HAAT, Network: PBS
 vs. Analog (dashed): 44.0 kW ERP at 277 m HAAT, Network: PBS

Market: Butte-Bozeman, MT



©2009 Hammett & Edison, Inc.

● Coverage gained after DTV transition
 No symbol = no change in coverage

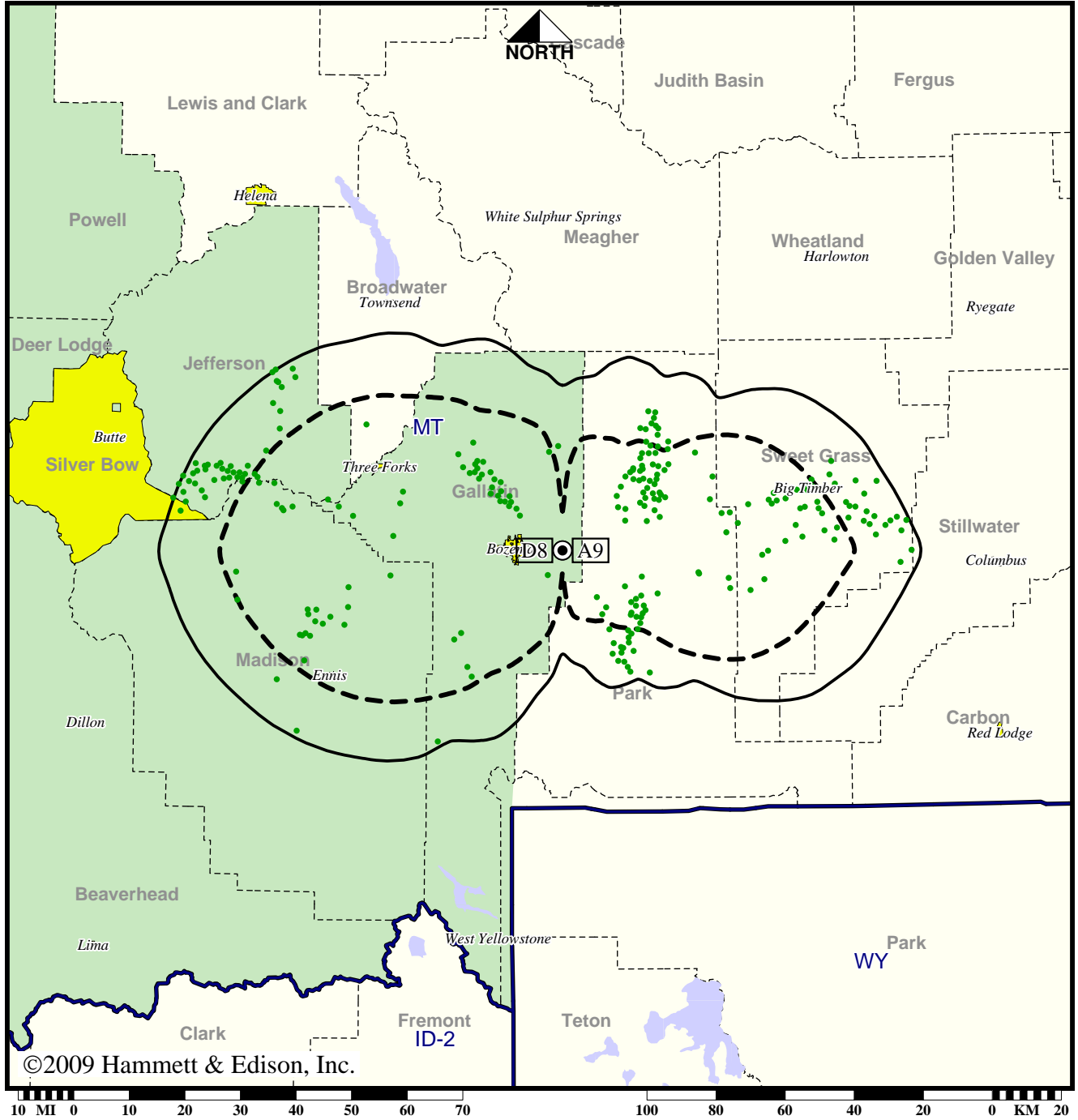
Analog service	73,927 persons
Digital service	82,403
Analog loss	0
Digital gain	8,476
Net gain	8,476

TV Station KUSM • Analog Channel 9, DTV Channel 8 • Bozeman, MT

Approved Post-Transition Operation: Licensed

Digital License (solid): 17.9 kW ERP at 271 m HAAT, Network: PBS
 vs. Analog (dashed): 44.0 kW ERP at 277 m HAAT, Network: PBS

Market: Butte-Bozeman, MT



©2009 Hammett & Edison, Inc.

- Coverage gained after DTV transition
- No symbol = no change in coverage

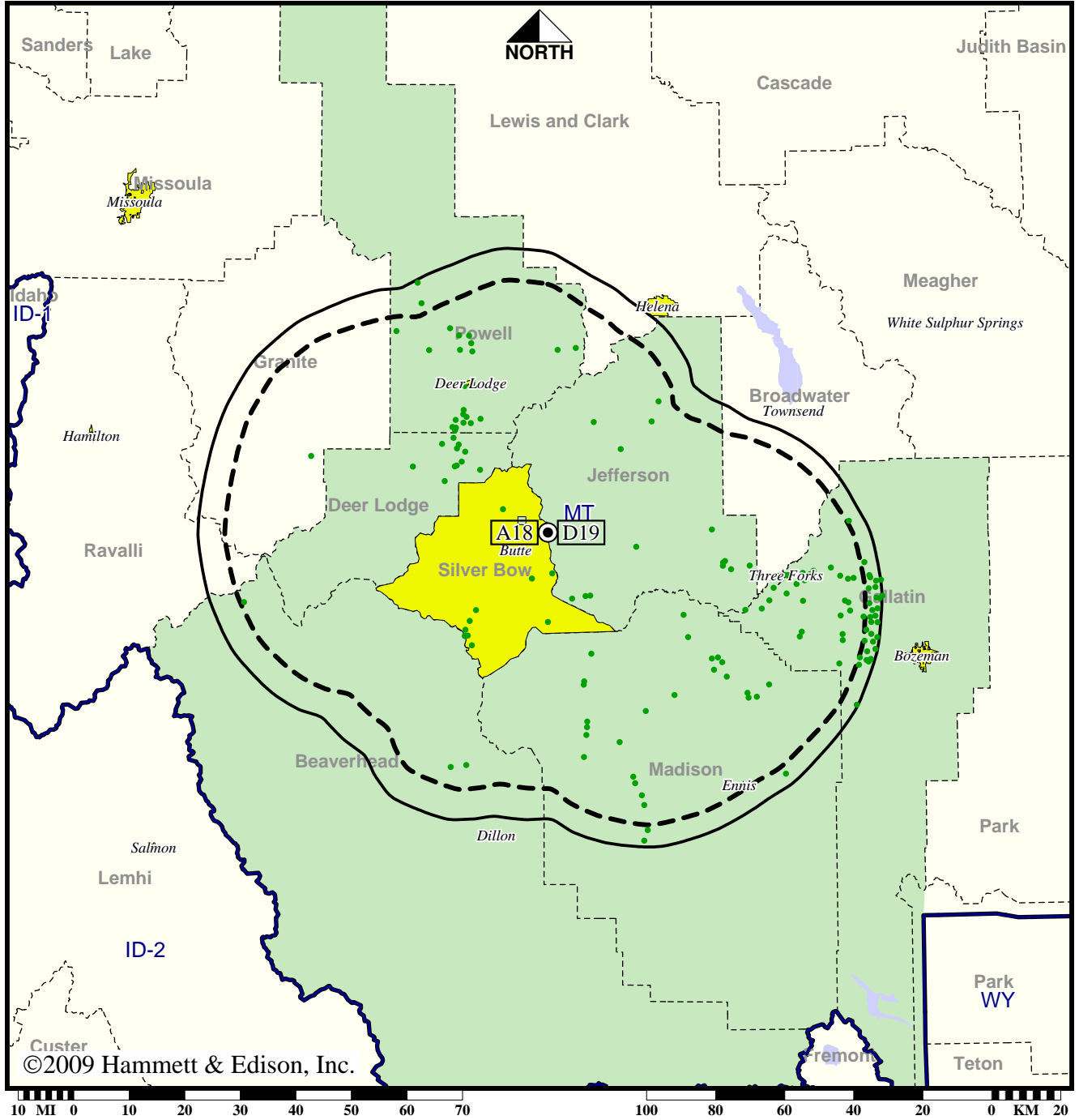
Analog service	73,927 persons
Digital service	82,403
Analog loss	0
Digital gain	8,476
Net gain	8,476

TV Station KWYB • Analog Channel 18, DTV Channel 19 • Butte, MT

Expected Operation on June 13: Granted Construction Permit

**Digital CP (solid): 111 kW ERP at 585 m HAAT, Network: ABC
vs. Analog (dashed): 1780 kW ERP at 585 m HAAT, Network: ABC**

Market: Butte-Bozeman, MT



● Coverage gained after DTV transition
No symbol = no change in coverage

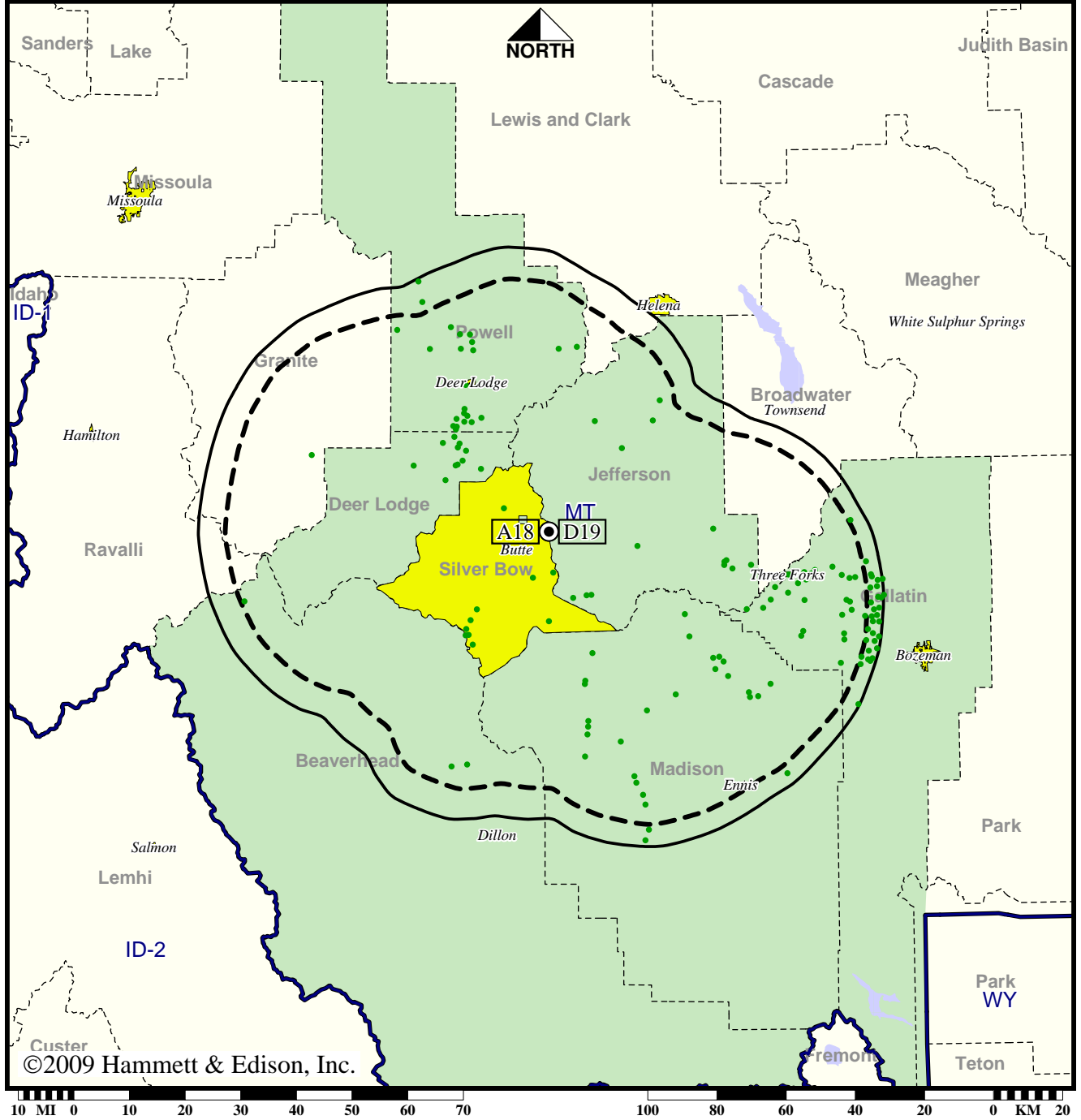
Analog service	52,670 persons
Digital service	58,633
Analog loss	0
Digital gain	5,963
Net gain	5,963

TV Station KWYB • Analog Channel 18, DTV Channel 19 • Butte, MT

Approved Post-Transition Operation: Granted Construction Permit

**Digital CP (solid): 111 kW ERP at 585 m HAAT, Network: ABC
vs. Analog (dashed): 1780 kW ERP at 585 m HAAT, Network: ABC**

Market: Butte-Bozeman, MT



● Coverage gained after DTV transition
No symbol = no change in coverage

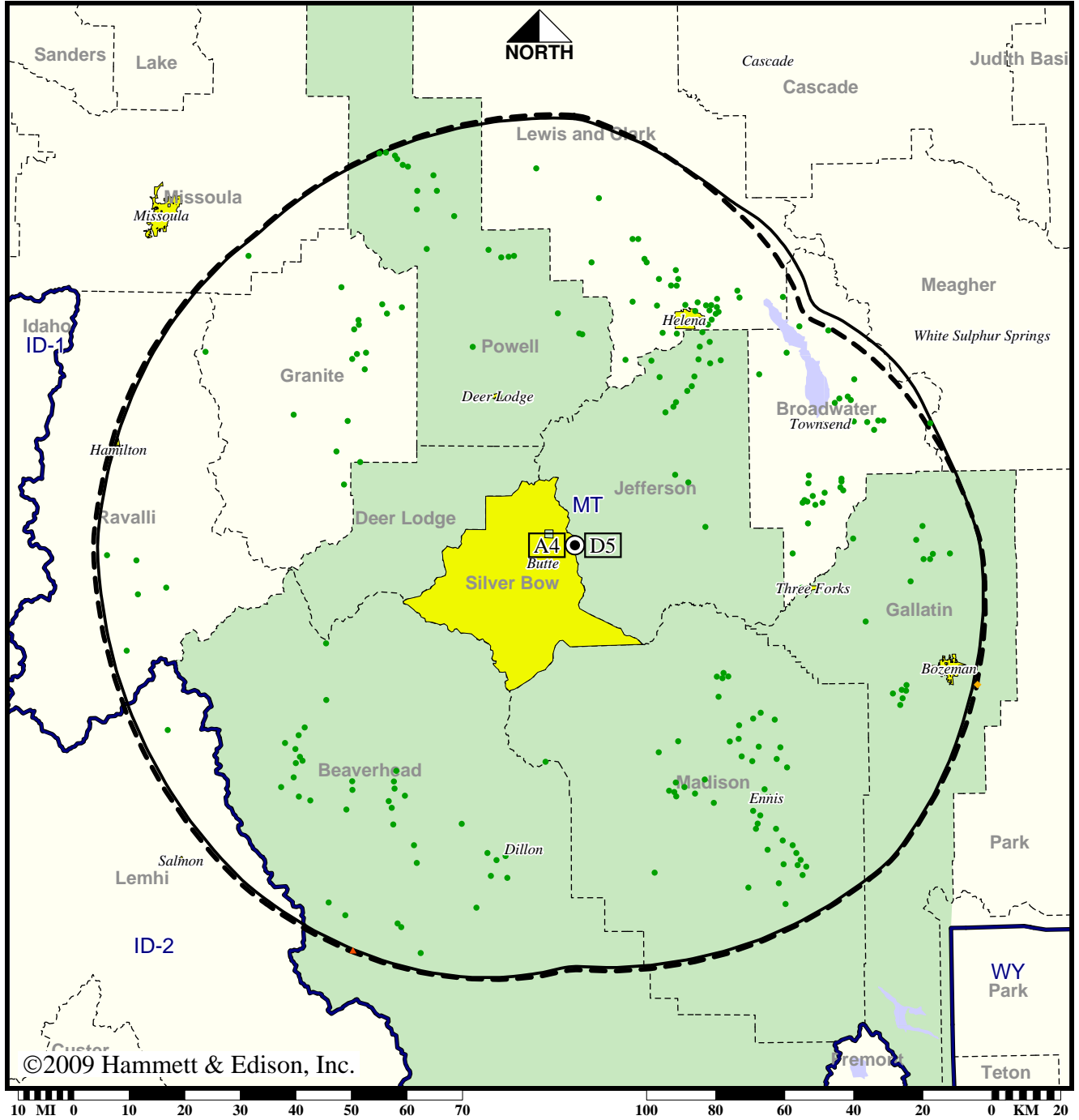
Analog service	52,670 persons
Digital service	58,633
Analog loss	0
Digital gain	5,963
Net gain	5,963

Station KXLF-TV • Analog Channel 4, DTV Channel 5 • Butte, MT

Expected Operation on June 13: Granted Construction Permit

Digital CP (solid): 10.0 kW ERP at 588 m HAAT, Network: CBS
 vs. Analog (dashed): 100 kW ERP at 576 m HAAT, Network: CBS

Market: Butte-Bozeman, MT



©2009 Hammett & Edison, Inc.

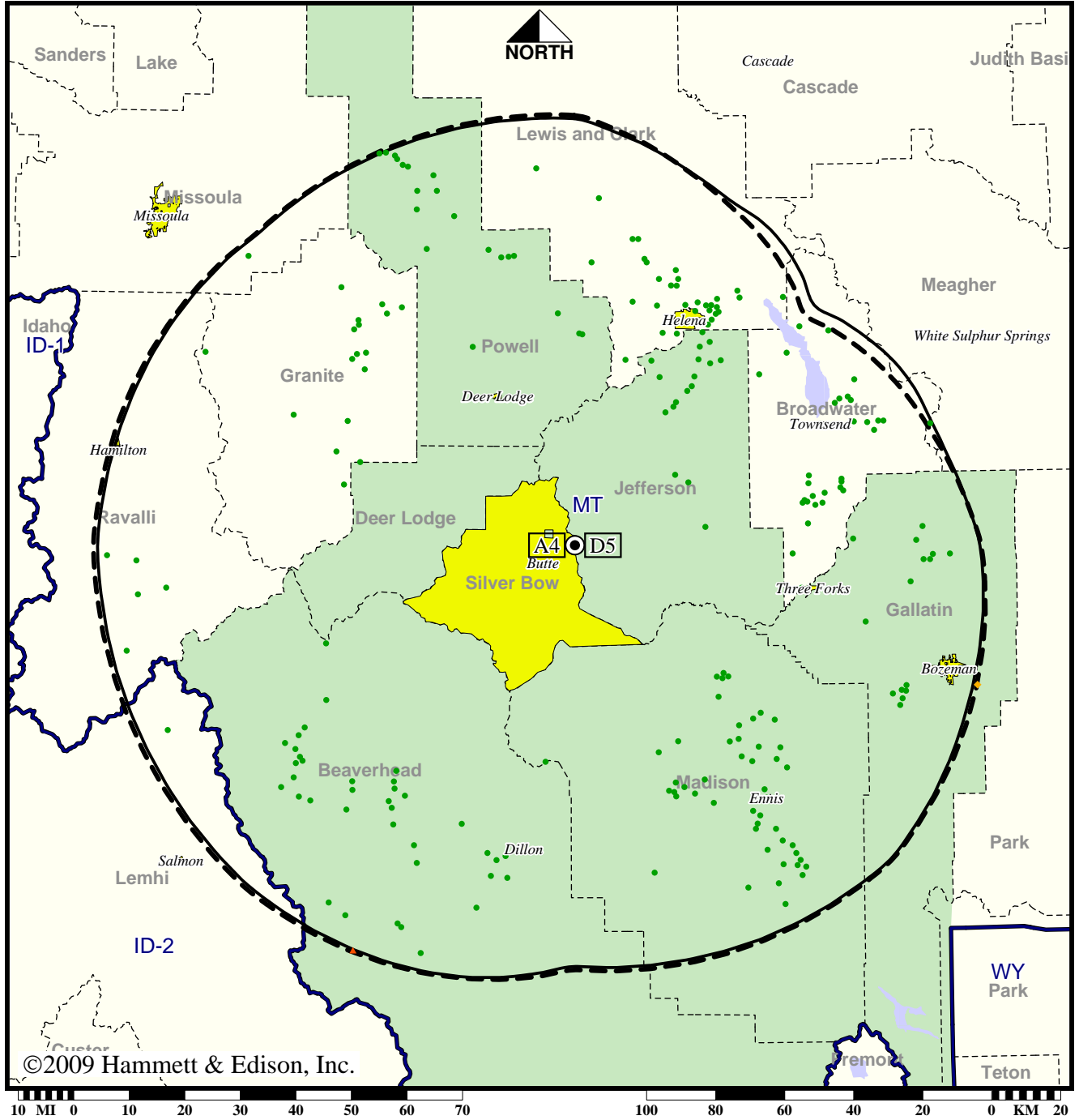
- Coverage gained after DTV transition
- No symbol = no change in coverage
- ◆ Coverage lost but still served by same network
- ▲ Coverage lost and no other service by same network

Analog service	148,747 persons
Digital service	161,433
Analog loss	20
Digital gain	12,706
Net gain	12,686

Station KXLF-TV • Analog Channel 4, DTV Channel 5 • Butte, MT
 Approved Post-Transition Operation: Granted Construction Permit

Digital CP (solid): 10.0 kW ERP at 588 m HAAT, Network: CBS
 vs. Analog (dashed): 100 kW ERP at 576 m HAAT, Network: CBS

Market: Butte-Bozeman, MT



©2009 Hammett & Edison, Inc.

- Coverage gained after DTV transition
- No symbol = no change in coverage
- ◆ Coverage lost but still served by same network
- ▲ Coverage lost and no other service by same network

Analog service	148,747 persons
Digital service	161,433
Analog loss	20
Digital gain	12,706
Net gain	12,686