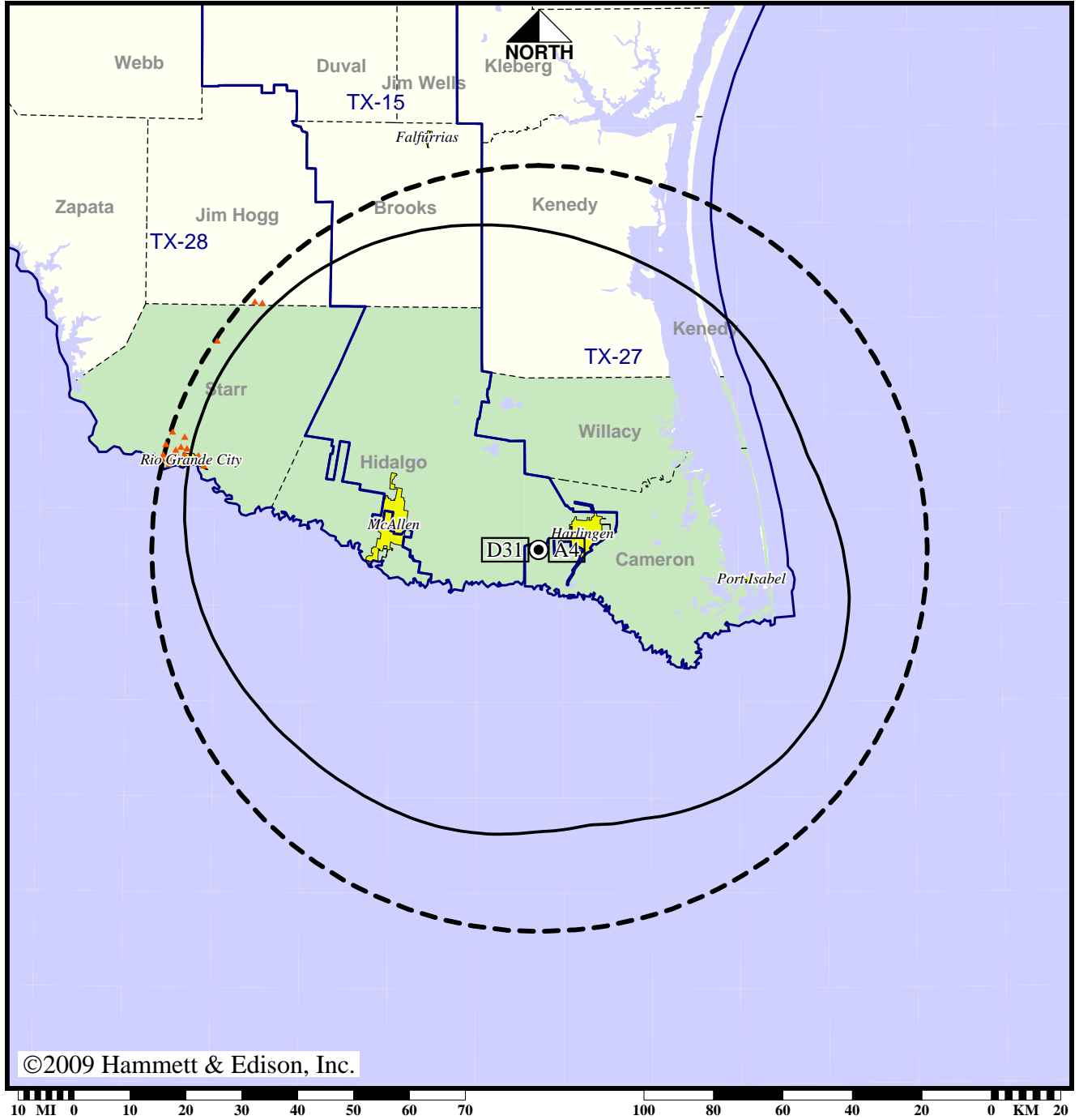


Station KGBT-TV • Analog Channel 4, DTV Channel 31 • Harlingen, TX

Expected Operation on June 13: Licensed

Digital License (solid): 1000 kW ERP at 368 m HAAT, Network: CBS
 vs. Analog (dashed): 100 kW ERP at 396 m HAAT, Network: CBS

Market: Harlingen-Weslaco-Brownsville-McAllen, TX



©2009 Hammett & Edison, Inc.

- No symbol = no change in coverage
- ▲ Coverage lost after DTV transition

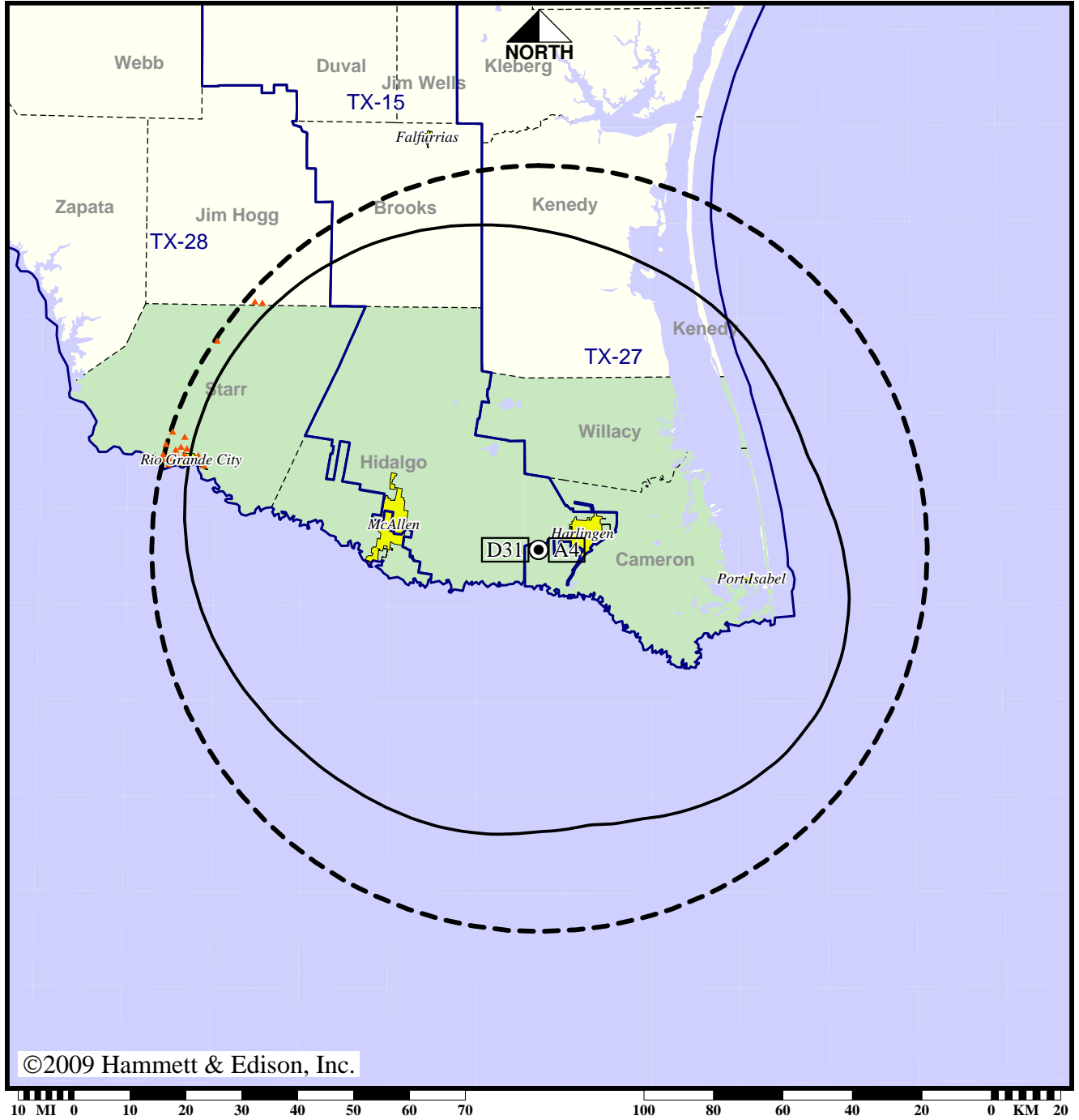
Analog service	956,702 persons
Digital service	947,814
Analog loss	8,888
Digital gain	0
Net gain	-8,888

Station KGBT-TV • Analog Channel 4, DTV Channel 31 • Harlingen, TX

Approved Post-Transition Operation: Licensed

Digital License (solid): 1000 kW ERP at 368 m HAAT, Network: CBS
 vs. Analog (dashed): 100 kW ERP at 396 m HAAT, Network: CBS

Market: Harlingen-Weslaco-Brownsville-McAllen, TX



©2009 Hammett & Edison, Inc.

- No symbol = no change in coverage
- ▲ Coverage lost after DTV transition

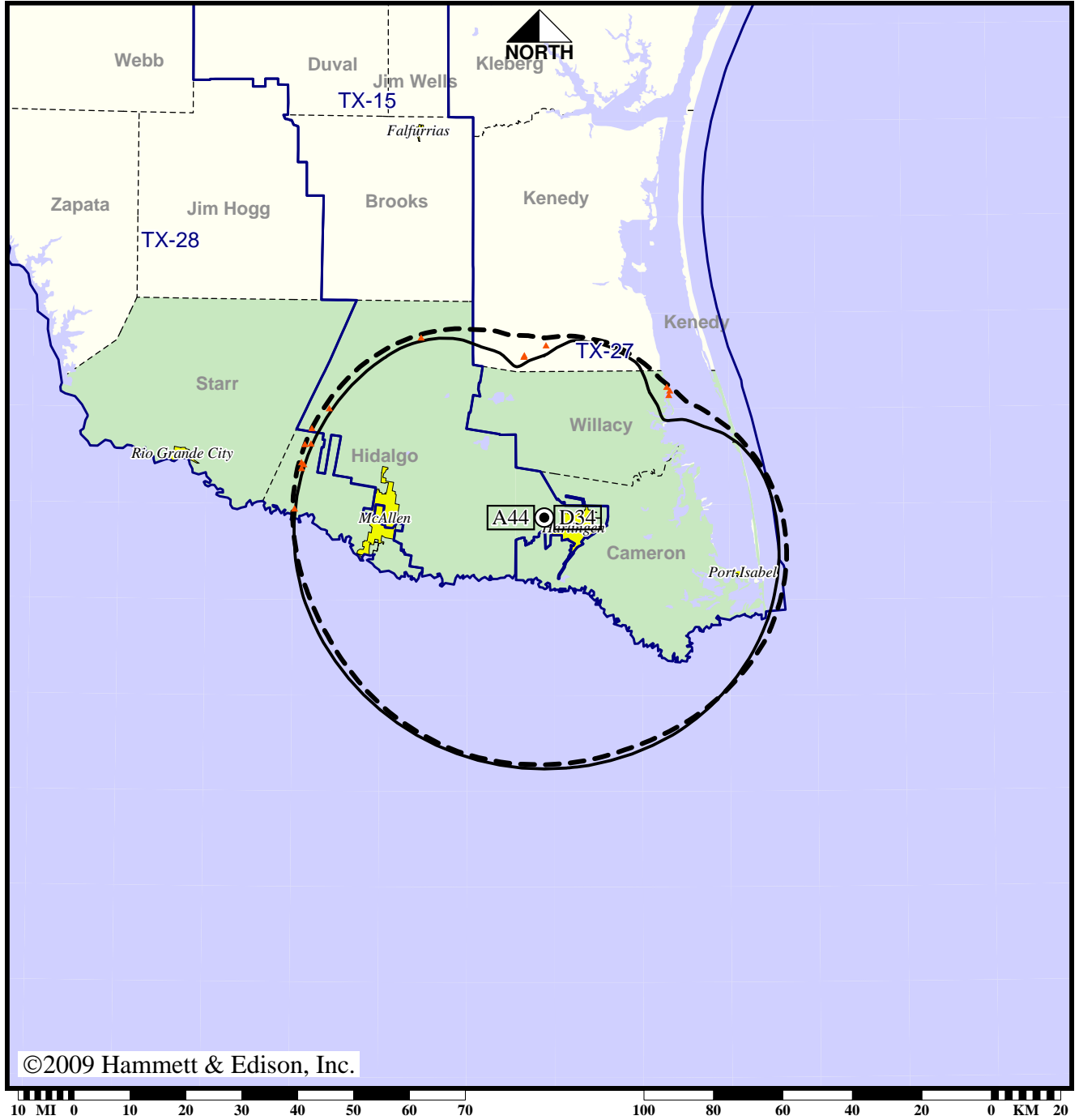
Analog service	956,702 persons
Digital service	947,814
Analog loss	8,888
Digital gain	0
Net gain	-8,888

Station KLUJ-TV • Analog Channel 44, DTV Channel 34 • Harlingen, TX

Expected Operation on June 13: Licensed

Digital License (solid): 45.0 kW ERP at 283 m HAAT
 vs. Analog (dashed): 1740 kW ERP at 296 m HAAT

Market: Harlingen-Weslaco-Brownsville-McAllen, TX



©2009 Hammett & Edison, Inc.

10 MI 0 10 20 30 40 50 60 70 100 80 60 40 20 0 KM 20

- No symbol = no change in coverage
- ▲ Coverage lost after DTV transition

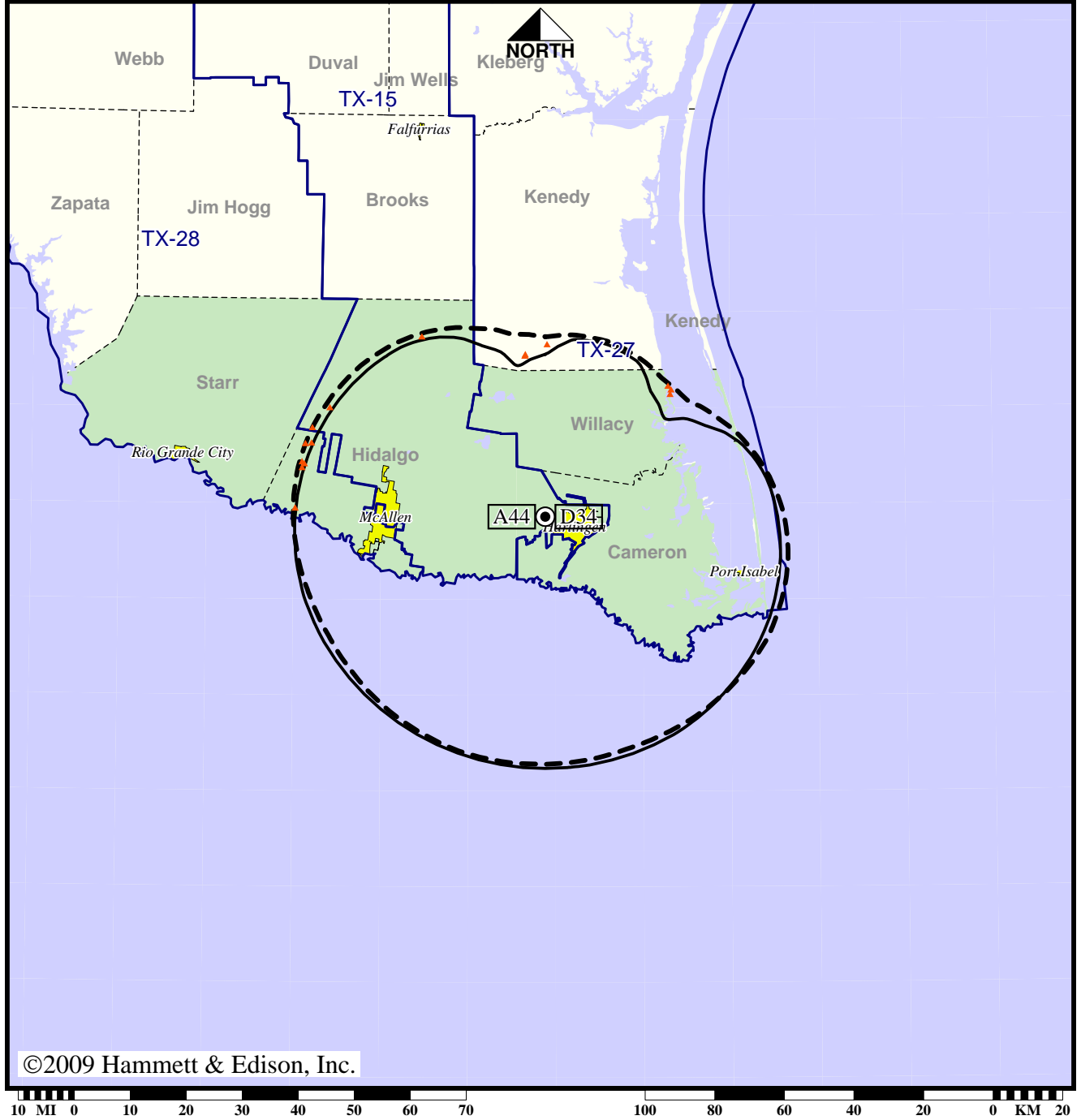
Analog service	918,307 persons
Digital service	917,891
Analog loss	416
Digital gain	0
Net gain	-416

Station KLUJ-TV • Analog Channel 44, DTV Channel 34 • Harlingen, TX

Approved Post-Transition Operation: Licensed

Digital License (solid): 45.0 kW ERP at 283 m HAAT
 vs. Analog (dashed): 1740 kW ERP at 296 m HAAT

Market: Harlingen-Weslaco-Brownsville-McAllen, TX



©2009 Hammett & Edison, Inc.

10 MI 0 10 20 30 40 50 60 70 100 80 60 40 20 0 KM 20

- No symbol = no change in coverage
- ▲ Coverage lost after DTV transition

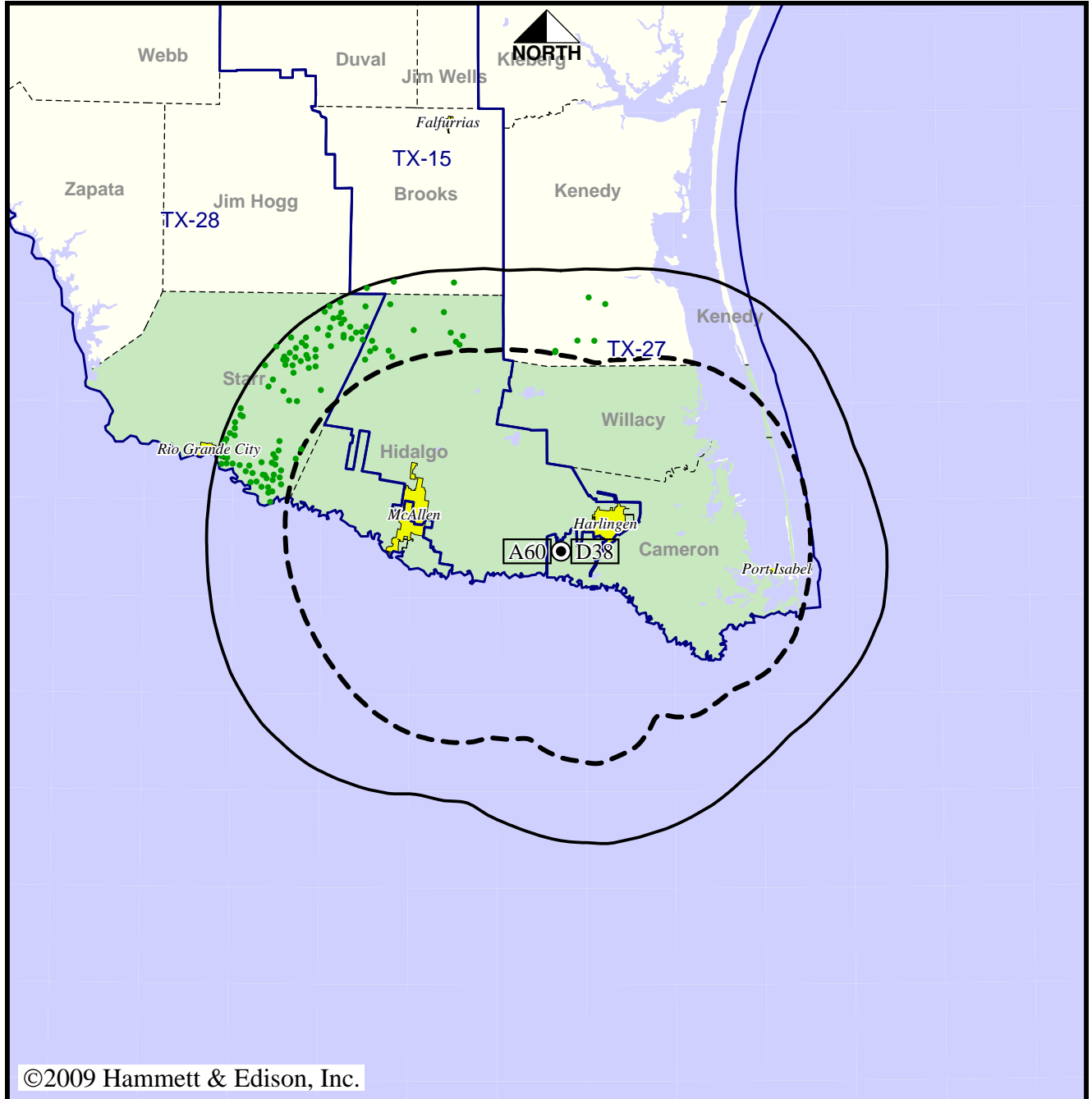
Analog service	918,307 persons
Digital service	917,891
Analog loss	416
Digital gain	0
Net gain	-416

TV Station KMBH • Analog Channel 60, DTV Channel 38 • Harlingen, TX

Expected Operation on June 13: Licensed

Digital License (solid): 1000 kW ERP at 346 m HAAT, Network: PBS
 vs. Analog (dashed): 2240 kW ERP at 372 m HAAT, Network: PBS

Market: Harlingen-Weslaco-Brownsville-McAllen, TX



©2009 Hammett & Edison, Inc.



- Coverage gained after DTV transition
- No symbol = no change in coverage

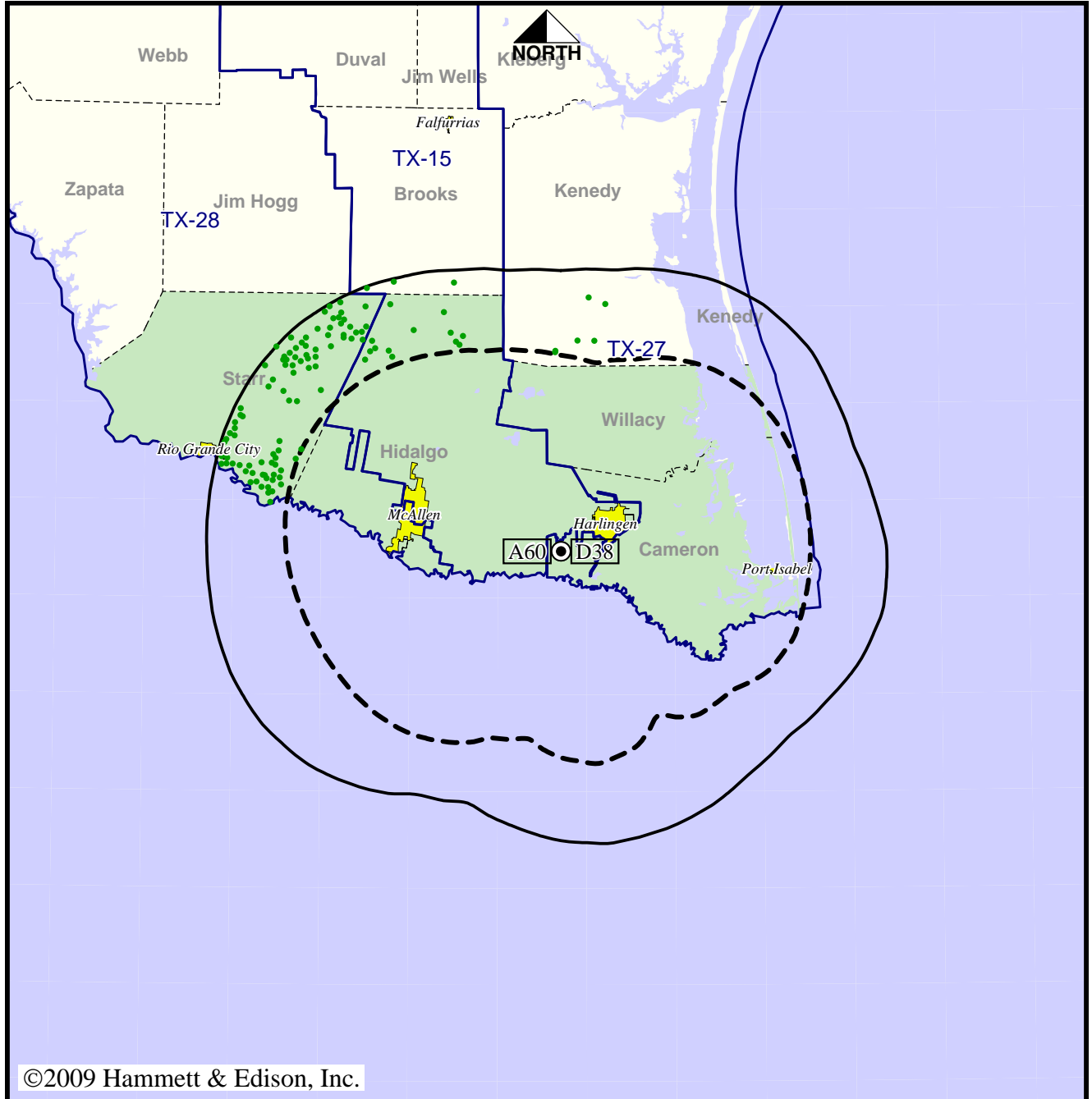
Analog service	924,753 persons
Digital service	942,857
Analog loss	0
Digital gain	18,104
Net gain	18,104

TV Station KMBH • Analog Channel 60, DTV Channel 38 • Harlingen, TX

Approved Post-Transition Operation: Licensed

Digital License (solid): 1000 kW ERP at 346 m HAAT, Network: PBS
 vs. Analog (dashed): 2240 kW ERP at 372 m HAAT, Network: PBS

Market: Harlingen-Weslaco-Brownsville-McAllen, TX



©2009 Hammett & Edison, Inc.



- Coverage gained after DTV transition
- No symbol = no change in coverage

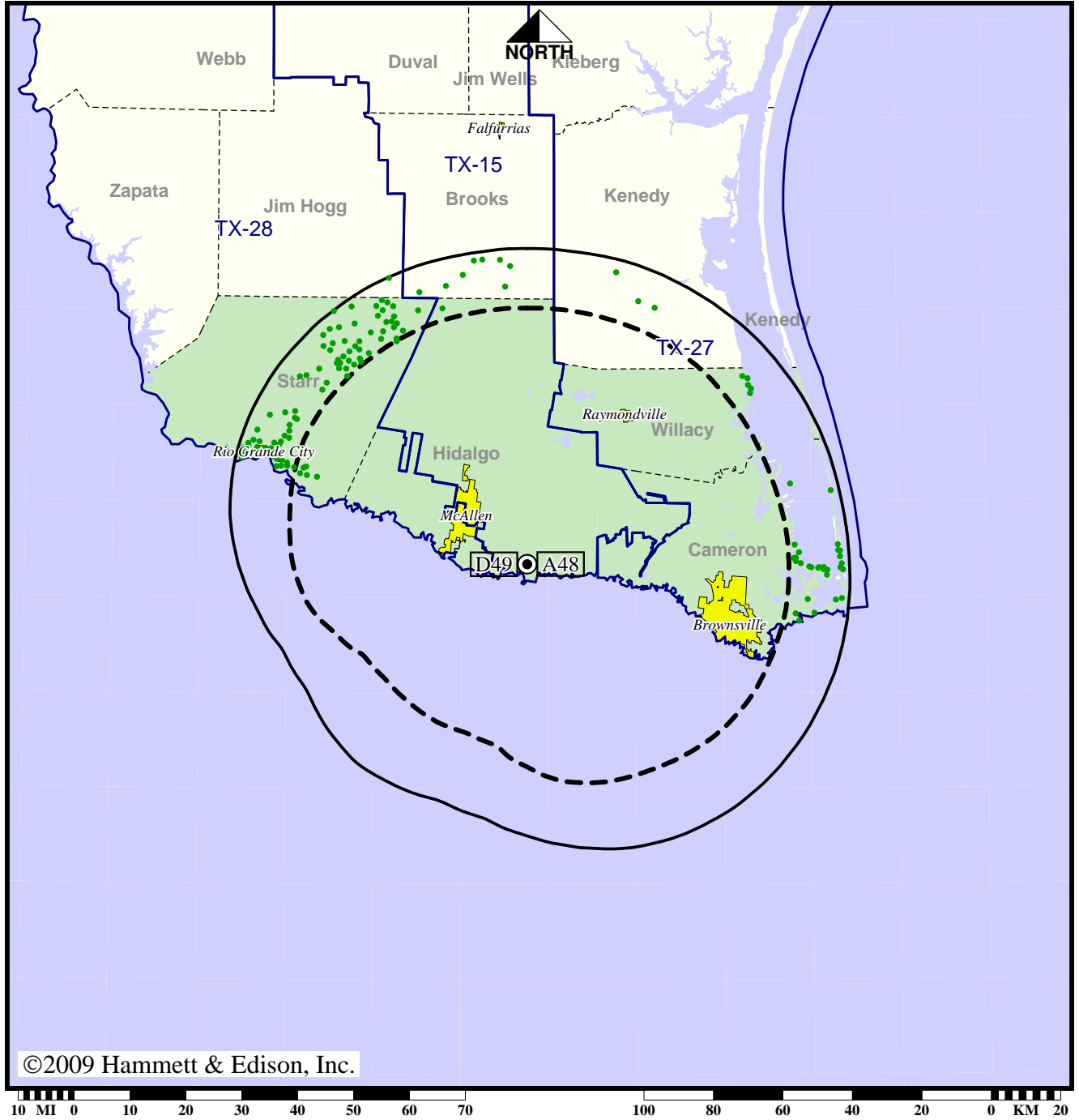
Analog service	924,753 persons
Digital service	942,857
Analog loss	0
Digital gain	18,104
Net gain	18,104

TV Station KNVO • Analog Channel 48, DTV Channel 49 • McAllen, TX

Expected Operation on June 13: Licensed

Digital License (solid): 1000 kW ERP at 286 m HAAT
 vs. Analog (dashed): 3020 kW ERP at 288 m HAAT

Market: Harlingen-Weslaco-Brownsville-McAllen, TX



©2009 Hammett & Edison, Inc.

● Coverage gained after DTV transition
 No symbol = no change in coverage

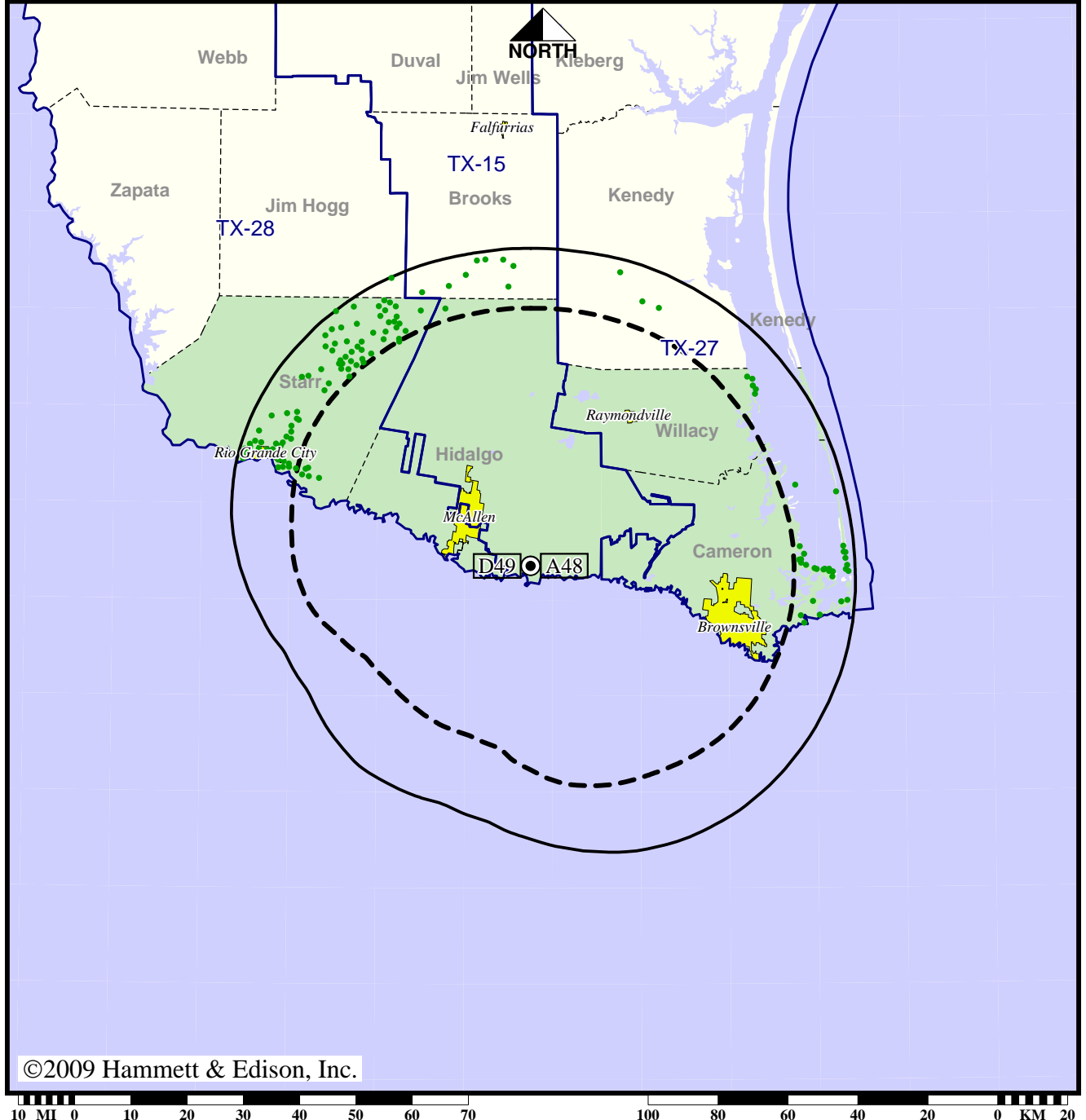
Analog service	918,582 persons
Digital service	956,339
Analog loss	0
Digital gain	37,757
Net gain	37,757

TV Station KNVO • Analog Channel 48, DTV Channel 49 • McAllen, TX

Approved Post-Transition Operation: Licensed

Digital License (solid): 1000 kW ERP at 286 m HAAT
 vs. Analog (dashed): 3020 kW ERP at 288 m HAAT

Market: Harlingen-Weslaco-Brownsville-McAllen, TX



©2009 Hammett & Edison, Inc.

● Coverage gained after DTV transition
 No symbol = no change in coverage

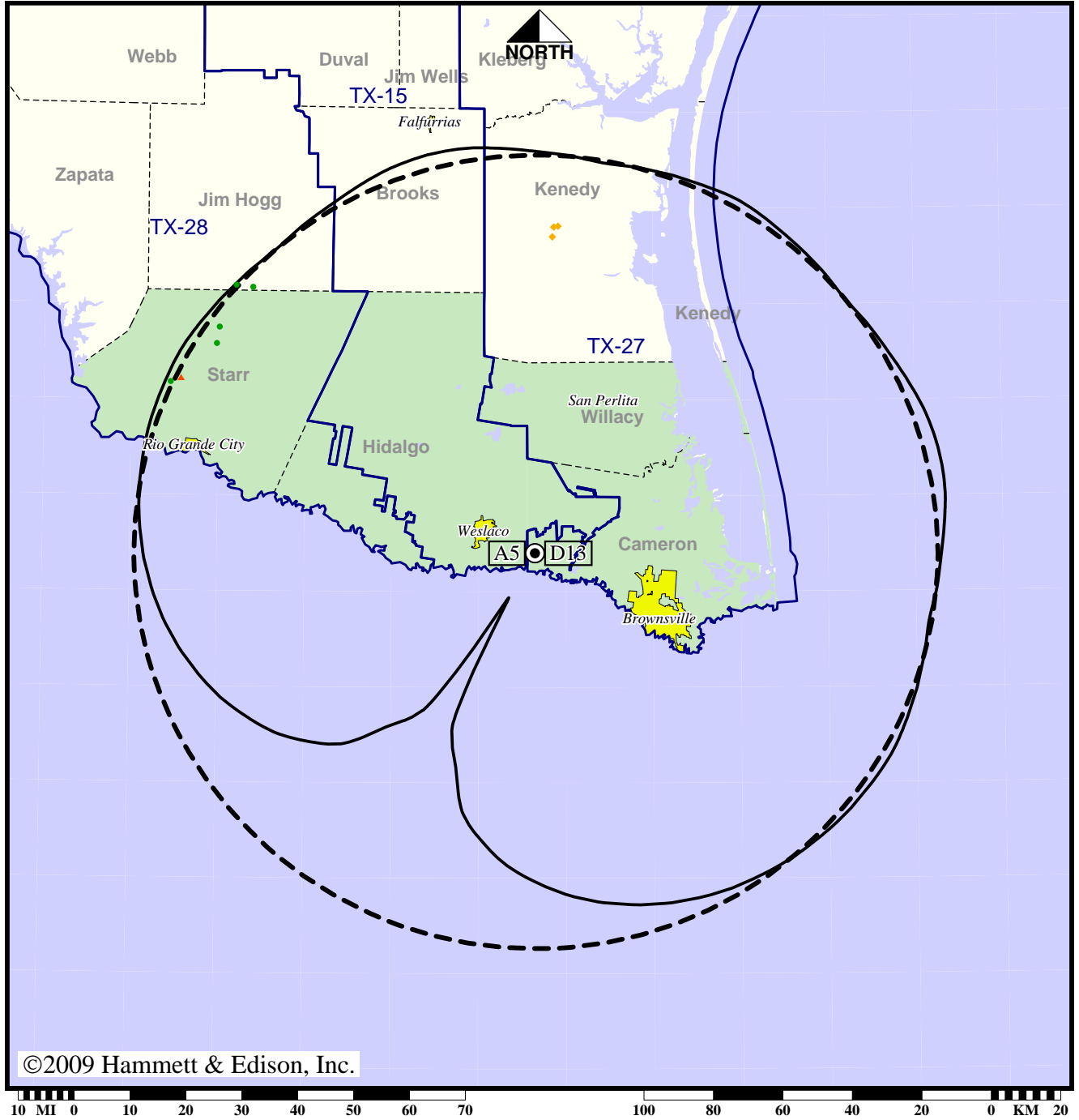
Analog service	918,582 persons
Digital service	956,339
Analog loss	0
Digital gain	37,757
Net gain	37,757

Station KRGV-TV • Analog Channel 5, DTV Channel 13 • Weslaco, TX

Expected Operation on June 13: Licensed

Digital License (solid): 57.0 kW ERP at 445 m HAAT, Network: ABC
 vs. Analog (dashed): 100 kW ERP at 442 m HAAT, Network: ABC

Market: Harlingen-Weslaco-Brownsville-McAllen, TX



- Coverage gained after DTV transition
- No symbol = no change in coverage
- ◆ Coverage lost but still served by same network
- ▲ Coverage lost and no other service by same network

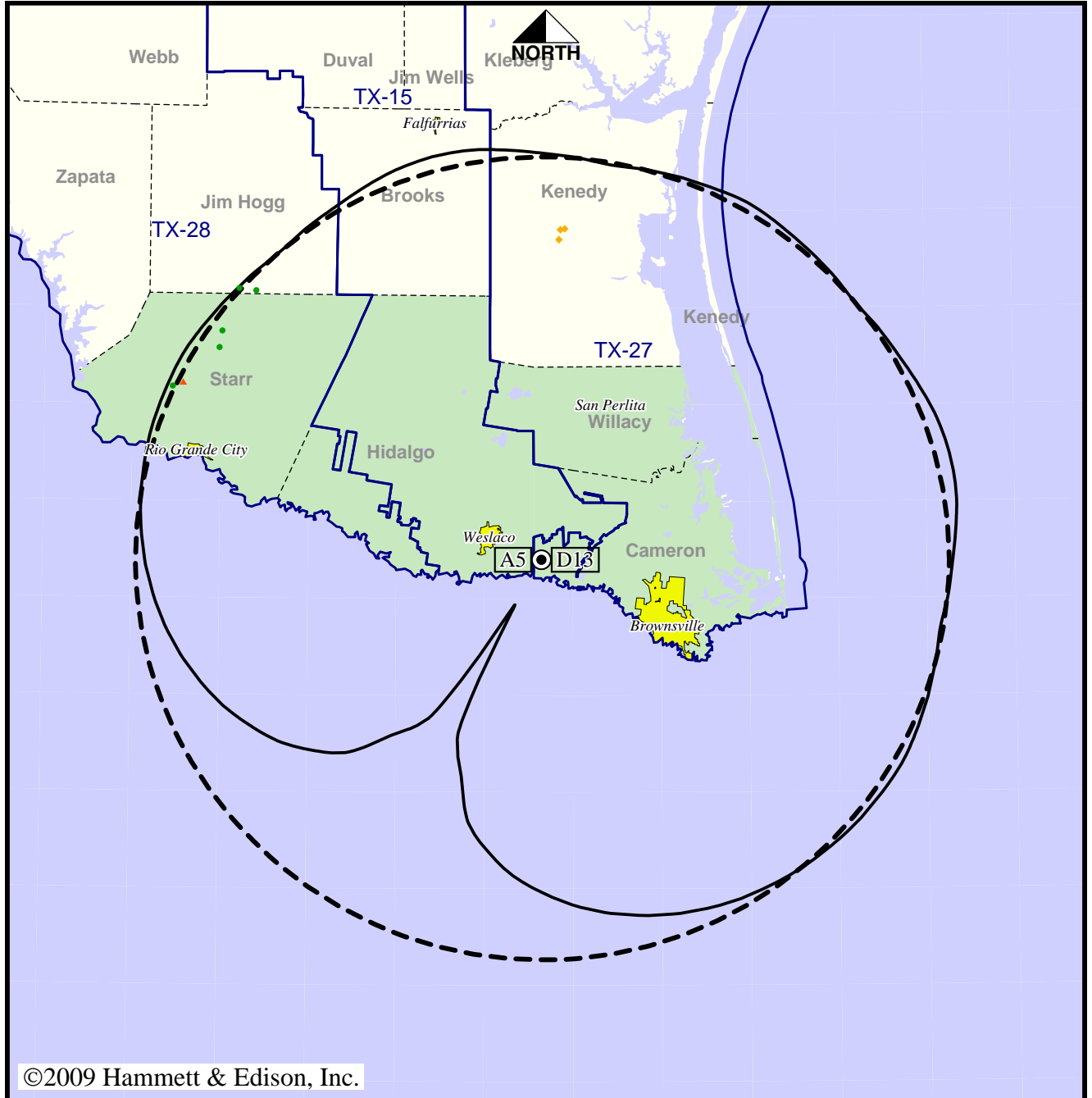
Analog service	959,585 persons
Digital service	959,591
Analog loss	48
Digital gain	54
Net gain	6

Station KRGV-TV • Analog Channel 5, DTV Channel 13 • Weslaco, TX

Approved Post-Transition Operation: Licensed

Digital License (solid): 57.0 kW ERP at 445 m HAAT, Network: ABC
 vs. Analog (dashed): 100 kW ERP at 442 m HAAT, Network: ABC

Market: Harlingen-Weslaco-Brownsville-McAllen, TX



©2009 Hammett & Edison, Inc.



- Coverage gained after DTV transition
- No symbol = no change in coverage
- ◆ Coverage lost but still served by same network
- ▲ Coverage lost and no other service by same network

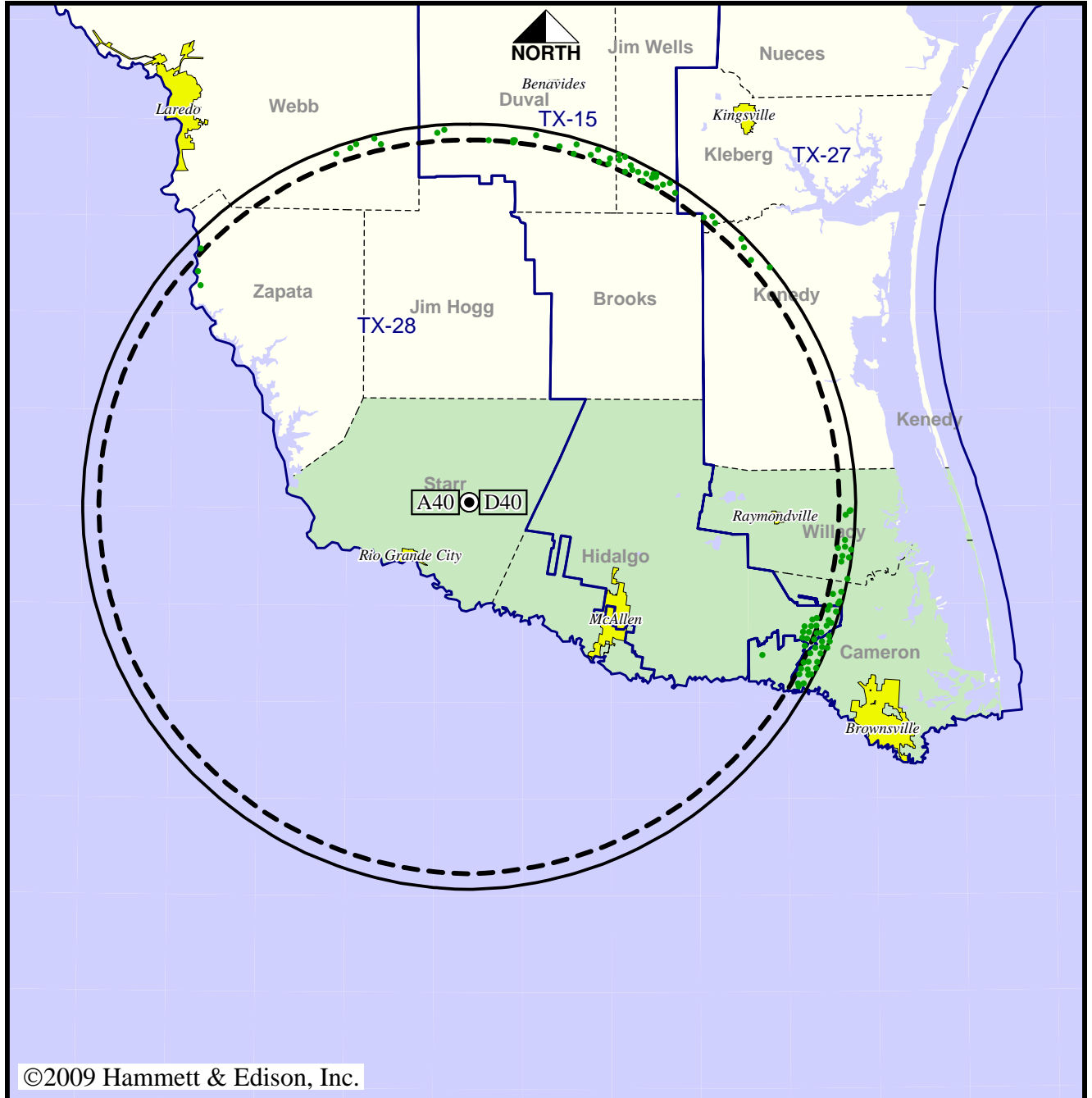
Analog service	959,585 persons
Digital service	959,591
Analog loss	48
Digital gain	54
Net gain	6

TV Station KTLM • Analog Channel 40, DTV Channel 40 • Rio Grande City, TX

Expected Operation on June 13: Granted Construction Permit

Digital CP (solid): 355 kW ERP at 577 m HAAT
 vs. Analog (dashed): 5000 kW ERP at 577 m HAAT

Market: Harlingen-Weslaco-Brownsville-McAllen, TX



©2009 Hammett & Edison, Inc.



- Coverage gained after DTV transition
- No symbol = no change in coverage

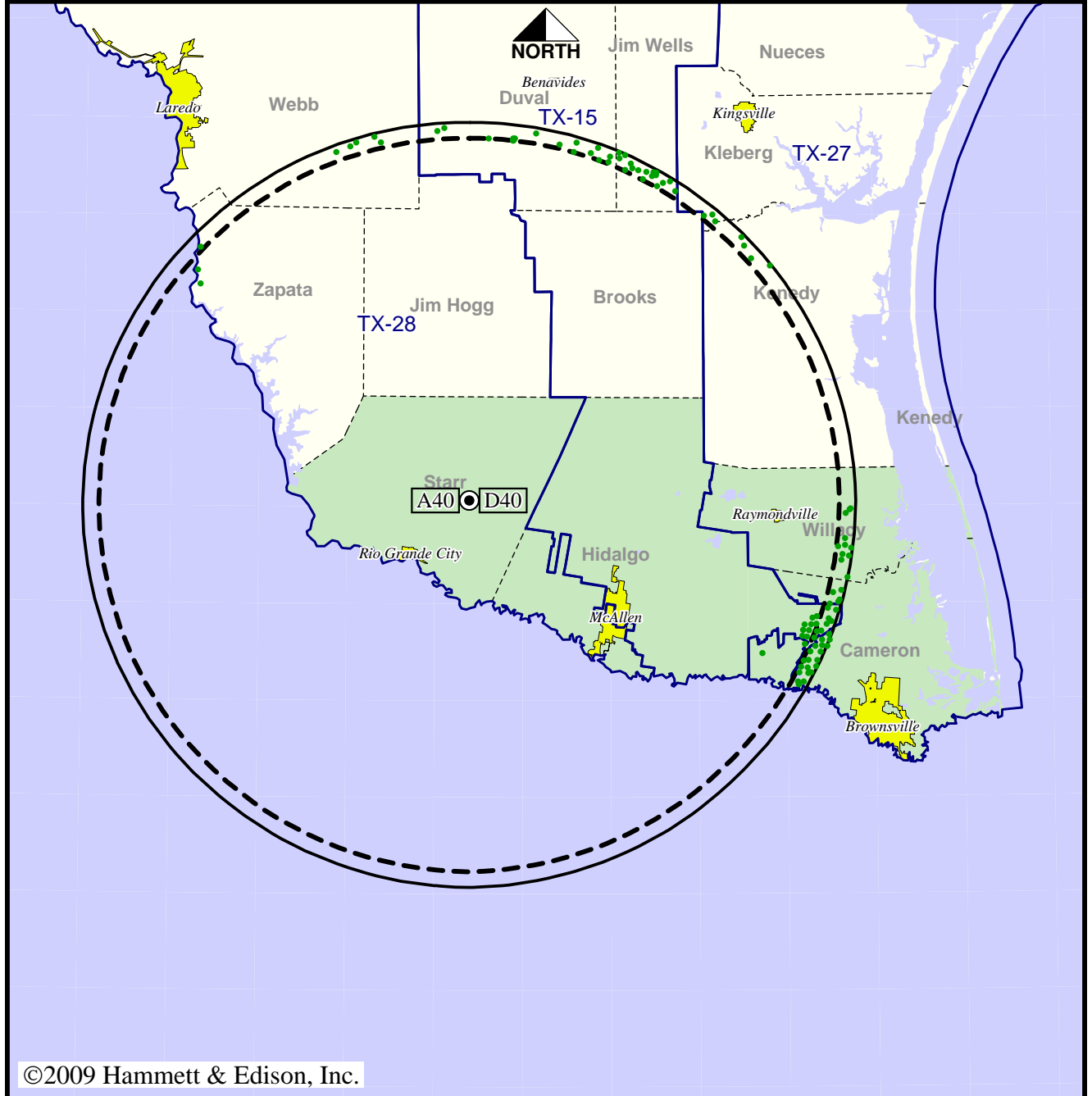
Analog service	724,763 persons
Digital service	785,776
Analog loss	0
Digital gain	61,013
Net gain	61,013

TV Station KTLM • Analog Channel 40, DTV Channel 40 • Rio Grande City, TX

Approved Post-Transition Operation: Granted Construction Permit

Digital CP (solid): 355 kW ERP at 577 m HAAT
 vs. Analog (dashed): 5000 kW ERP at 577 m HAAT

Market: Harlingen-Weslaco-Brownsville-McAllen, TX



©2009 Hammett & Edison, Inc.



- Coverage gained after DTV transition
- No symbol = no change in coverage

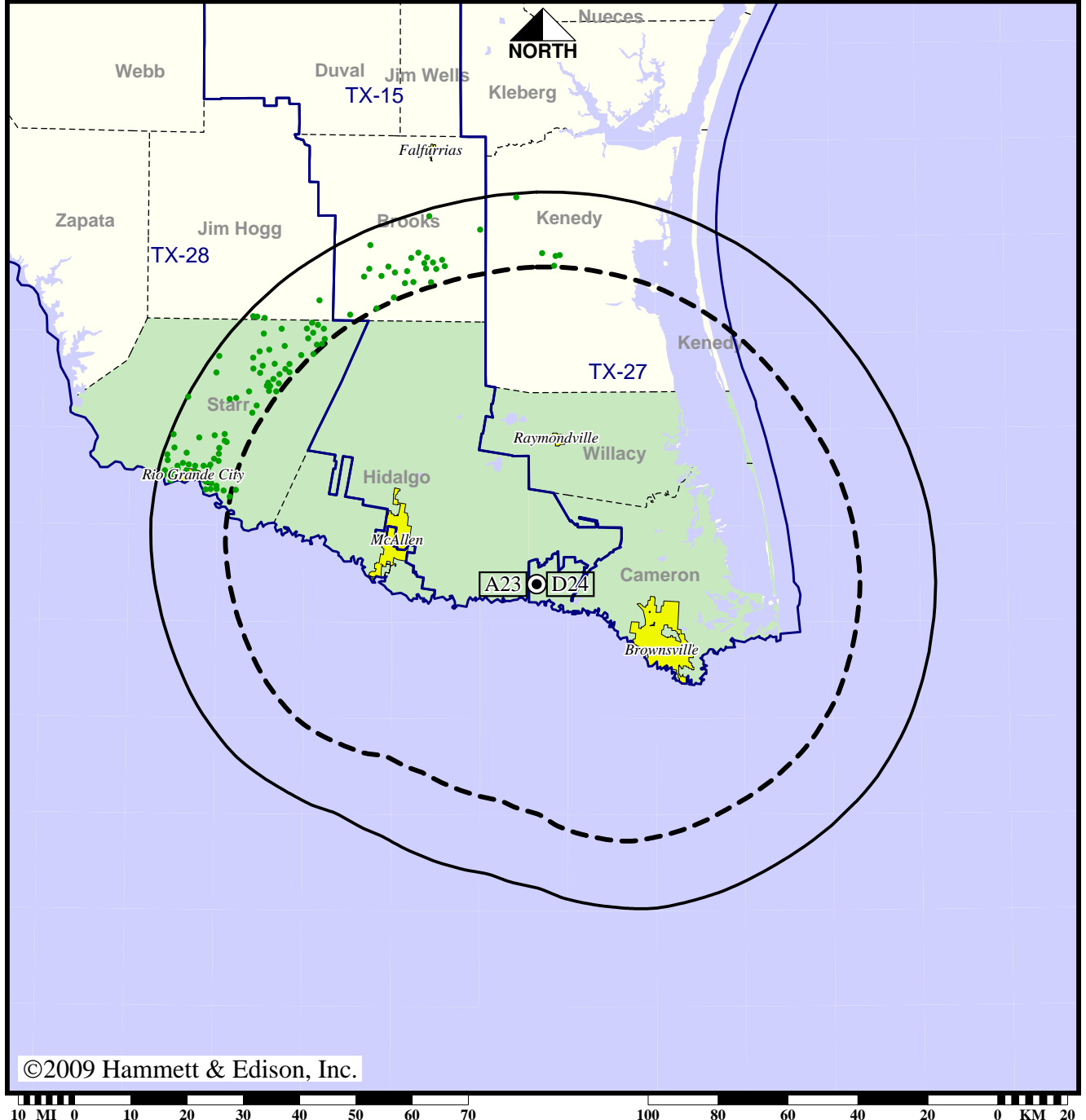
Analog service	724,763 persons
Digital service	785,776
Analog loss	0
Digital gain	61,013
Net gain	61,013

TV Station KVEO • Analog Channel 23, DTV Channel 24 • Brownsville, TX

Expected Operation on June 13: Licensed

Digital License (solid): 1000 kW ERP at 445 m HAAT, Network: NBC
 vs. Analog (dashed): 2570 kW ERP at 445 m HAAT, Network: NBC

Market: Harlingen-Weslaco-Brownsville-McAllen, TX



©2009 Hammett & Edison, Inc.



- Coverage gained after DTV transition
- No symbol = no change in coverage

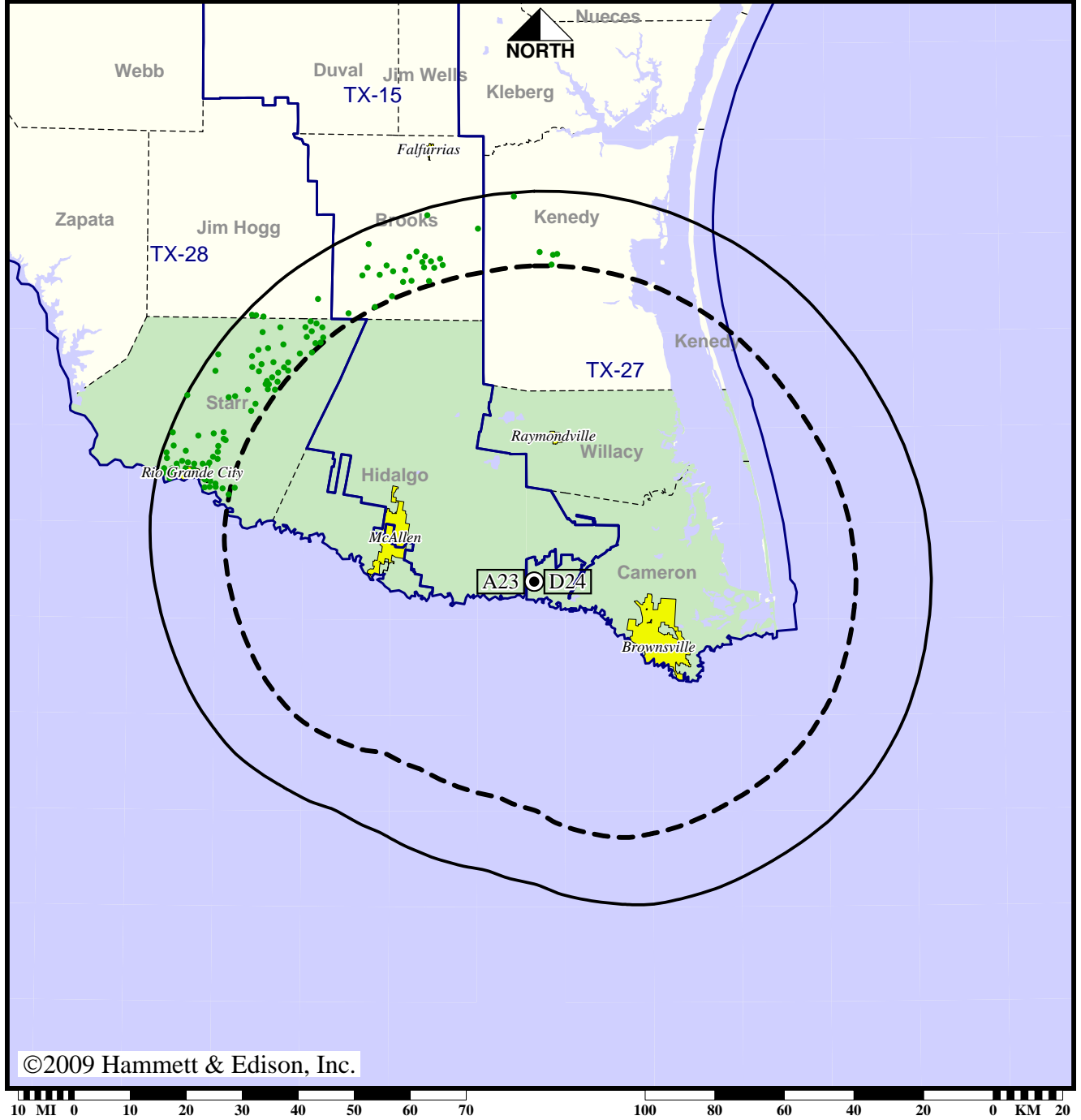
Analog service	933,659 persons
Digital service	958,455
Analog loss	0
Digital gain	24,796
Net gain	24,796

TV Station KVEO • Analog Channel 23, DTV Channel 24 • Brownsville, TX

Approved Post-Transition Operation: Licensed

Digital License (solid): 1000 kW ERP at 445 m HAAT, Network: NBC
 vs. Analog (dashed): 2570 kW ERP at 445 m HAAT, Network: NBC

Market: Harlingen-Weslaco-Brownsville-McAllen, TX



©2009 Hammett & Edison, Inc.



- Coverage gained after DTV transition
- No symbol = no change in coverage

Analog service	933,659 persons
Digital service	958,455
Analog loss	0
Digital gain	24,796
Net gain	24,796