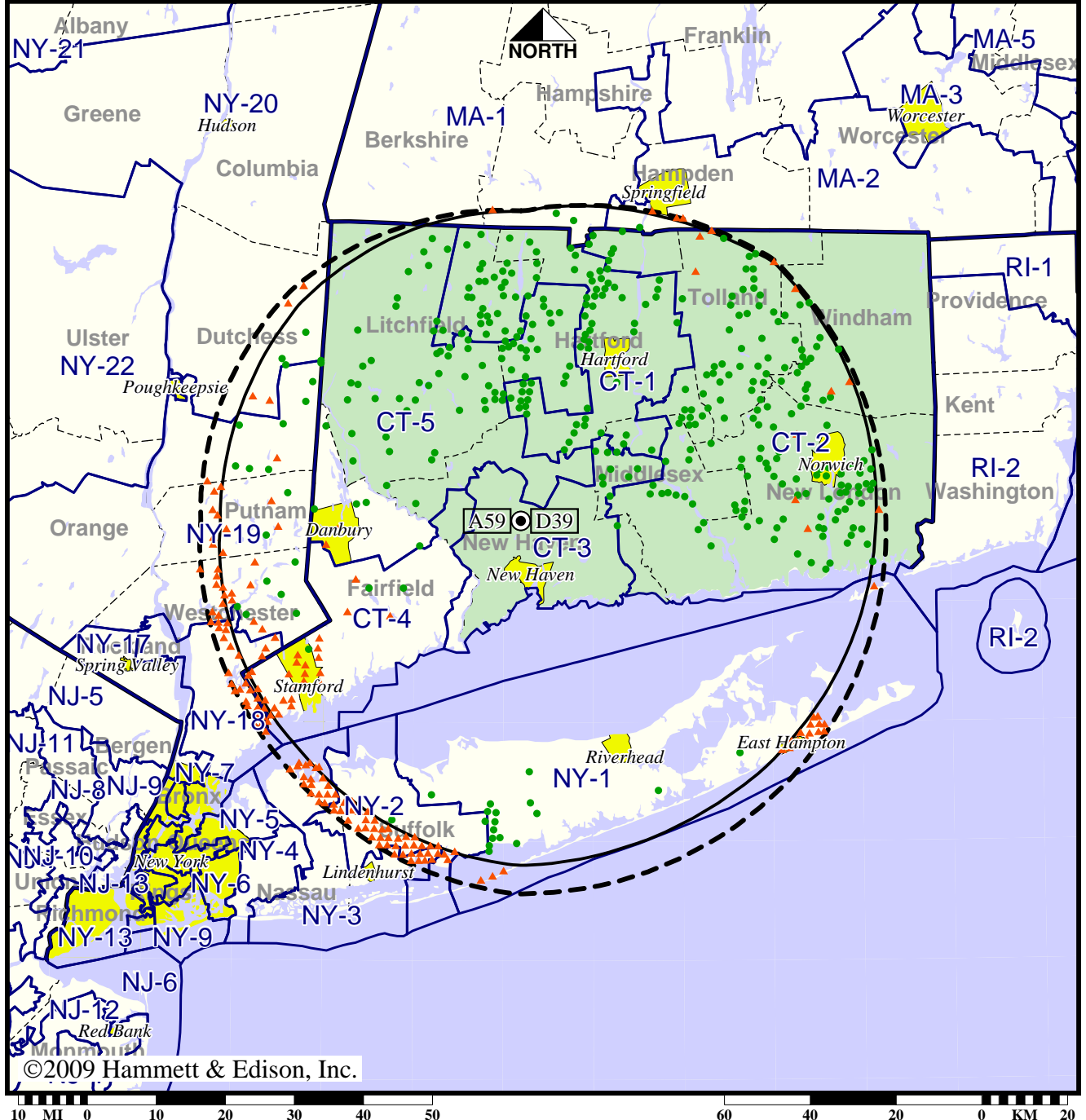


TV Station WCTX • Analog Channel 59, DTV Channel 39 • New Haven, CT

Expected Operation on June 13: Licensed

Digital License (solid): 170 kW ERP at 301 m HAAT
 vs. Analog (dashed): 5000 kW ERP at 314 m HAAT

Market: Hartford-New Haven, CT



©2009 Hammett & Edison, Inc.

- Coverage gained after DTV transition
- No symbol = no change in coverage
- ▲ Coverage lost after DTV transition

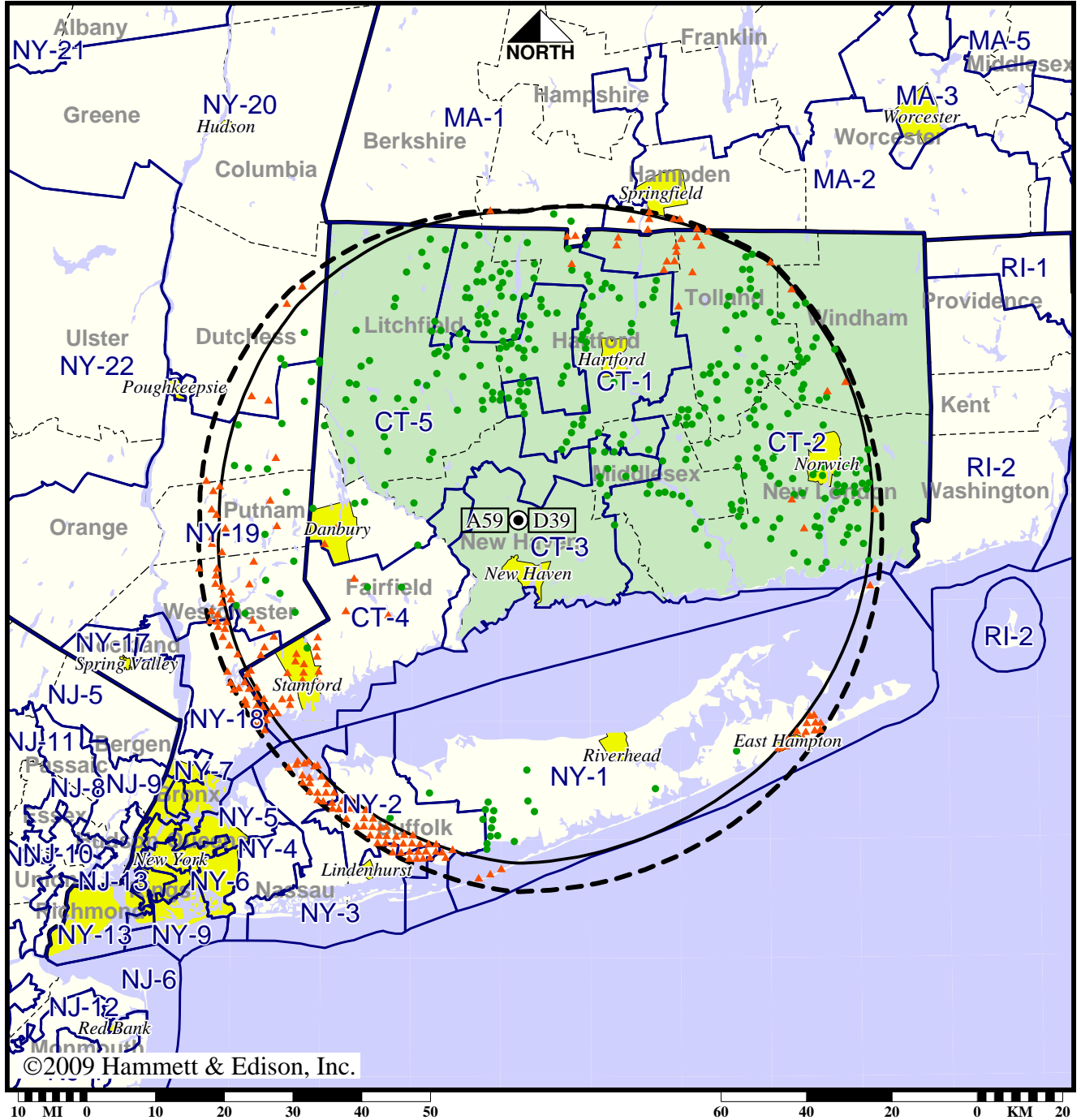
| | |
|-----------------|-------------------|
| Analog service | 4,311,231 persons |
| Digital service | 4,209,904 |
| Analog loss | 395,437 |
| Digital gain | 294,110 |
| Net gain | -101,327 |

TV Station WCTX • Analog Channel 59, DTV Channel 39 • New Haven, CT

Approved Post-Transition Operation: Licensed

Digital License (solid): 170 kW ERP at 301 m HAAT
 vs. Analog (dashed): 5000 kW ERP at 314 m HAAT

Market: Hartford-New Haven, CT



- Coverage gained after DTV transition
- No symbol = no change in coverage
- ▲ Coverage lost after DTV transition

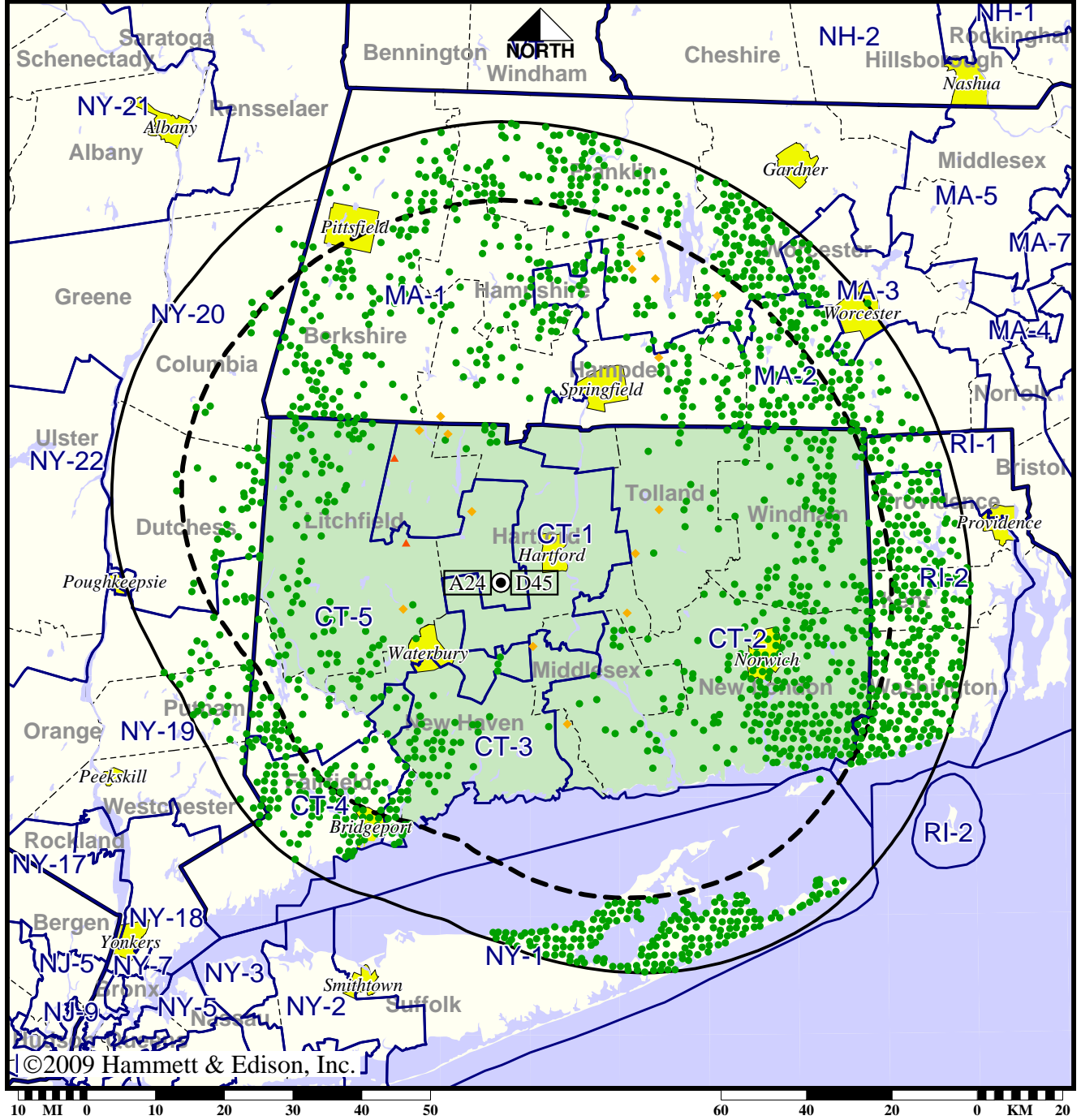
| | |
|-----------------|-------------------|
| Analog service | 4,311,231 persons |
| Digital service | 4,175,670 |
| Analog loss | 412,698 |
| Digital gain | 277,137 |
| Net gain | -135,561 |

TV Station WEDH • Analog Channel 24, DTV Channel 45 • Hartford, CT

Expected Operation on June 13: Granted Construction Permit

Digital CP (solid): 490 kW ERP at 505 m HAAT, Network: PBS
 vs. Analog (dashed): 1200 kW ERP at 517 m HAAT, Network: PBS

Market: Hartford-New Haven, CT



- Coverage gained after DTV transition
- No symbol = no change in coverage
- ◆ Coverage lost but still served by same network
- ▲ Coverage lost and no other service by same network

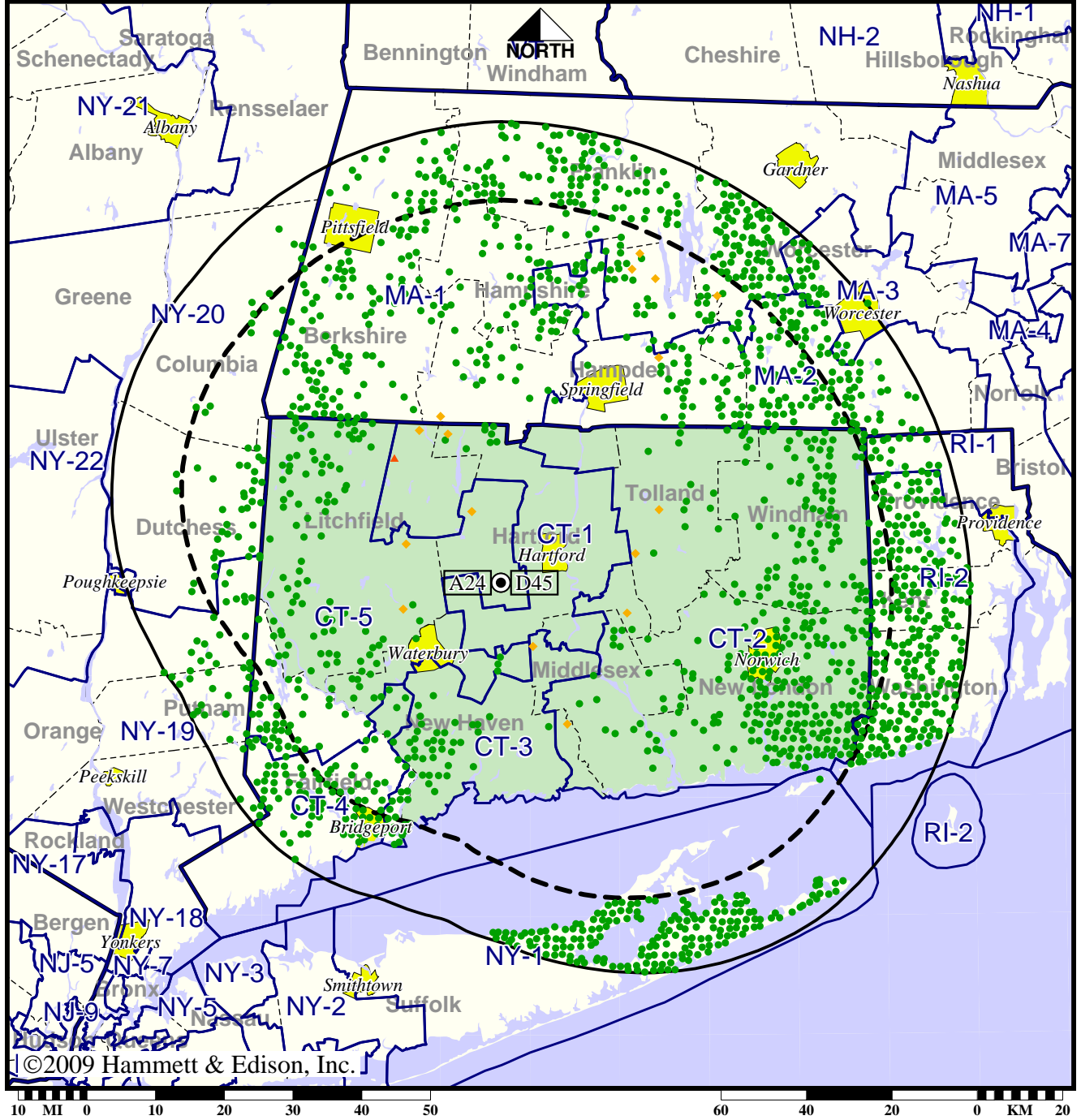
| | |
|-----------------|-------------------|
| Analog service | 2,787,391 persons |
| Digital service | 3,985,508 |
| Analog loss | 6,026 |
| Digital gain | 1,204,143 |
| Net gain | 1,198,117 |

TV Station WEDH • Analog Channel 24, DTV Channel 45 • Hartford, CT

Approved Post-Transition Operation: Granted Construction Permit

Digital CP (solid): 490 kW ERP at 505 m HAAT, Network: PBS
 vs. Analog (dashed): 1200 kW ERP at 517 m HAAT, Network: PBS

Market: Hartford-New Haven, CT



- Coverage gained after DTV transition
- No symbol = no change in coverage
- ◆ Coverage lost but still served by same network
- ▲ Coverage lost and no other service by same network

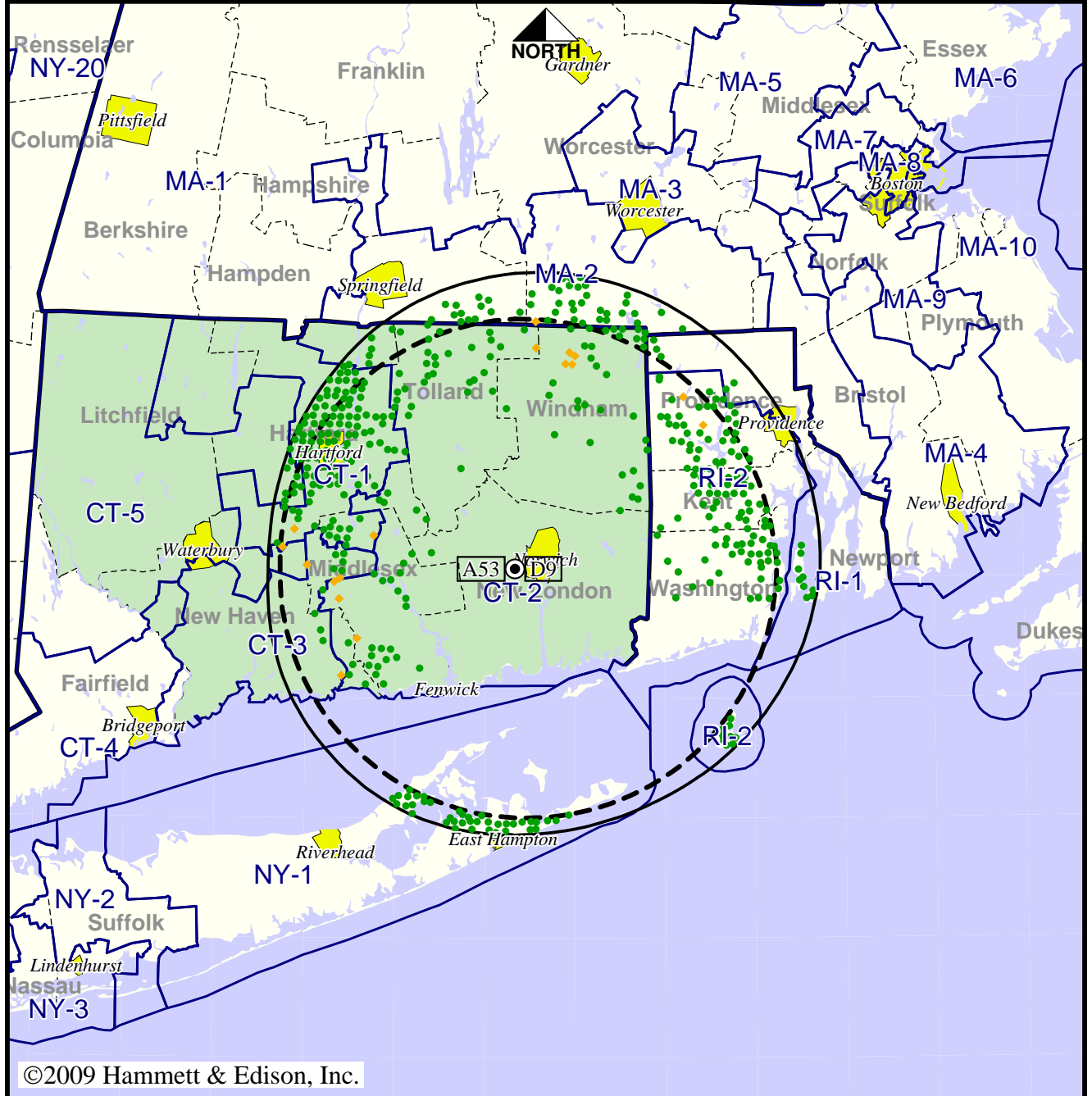
| | |
|-----------------|-------------------|
| Analog service | 2,787,391 persons |
| Digital service | 3,951,616 |
| Analog loss | 6,026 |
| Digital gain | 1,170,251 |
| Net gain | 1,164,225 |

TV Station WEDN • Analog Channel 53, DTV Channel 9 • Norwich, CT

Expected Operation on June 13: Granted Construction Permit

Digital CP (solid): 1.25 kW ERP at 192 m HAAT, Network: PBS
 vs. Analog (dashed): 630 kW ERP at 204 m HAAT, Network: PBS

Market: Hartford-New Haven, CT



©2009 Hammett & Edison, Inc.



- Coverage gained after DTV transition
- No symbol = no change in coverage
- ◆ Coverage lost but still served by same network

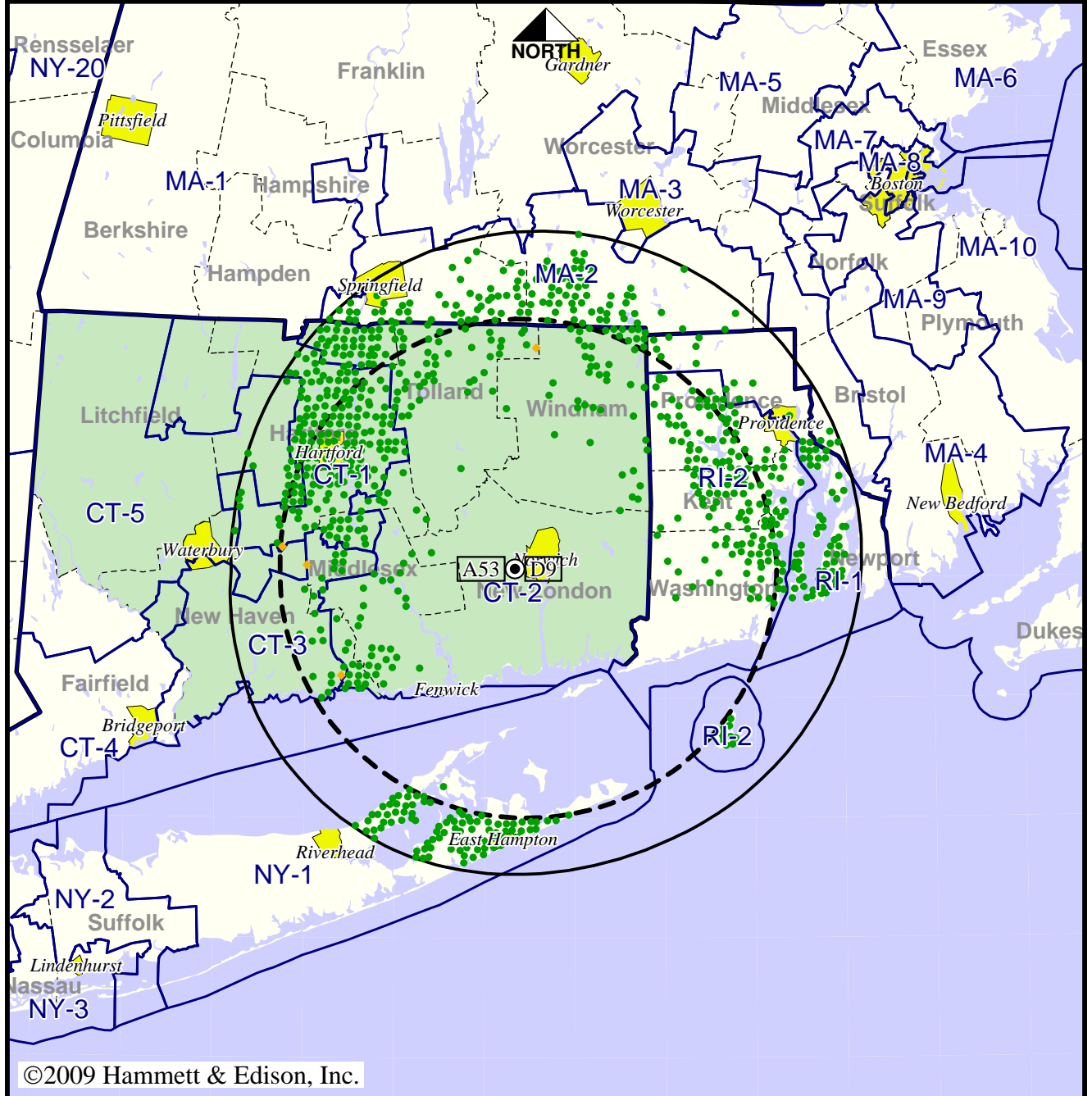
| | |
|-----------------|-----------------|
| Analog service | 658,277 persons |
| Digital service | 1,267,219 |
| Analog loss | 5,020 |
| Digital gain | 613,962 |
| Net gain | 608,942 |

TV Station WEDN • Analog Channel 53, DTV Channel 9 • Norwich, CT

Approved Post-Transition Operation: Granted Construction Permit

Digital CP (solid): 4.20 kW ERP at 192 m HAAT, Network: PBS
 vs. Analog (dashed): 630 kW ERP at 204 m HAAT, Network: PBS

Market: Hartford-New Haven, CT



©2009 Hammett & Edison, Inc.



- Coverage gained after DTV transition
- No symbol = no change in coverage
- ◆ Coverage lost but still served by same network

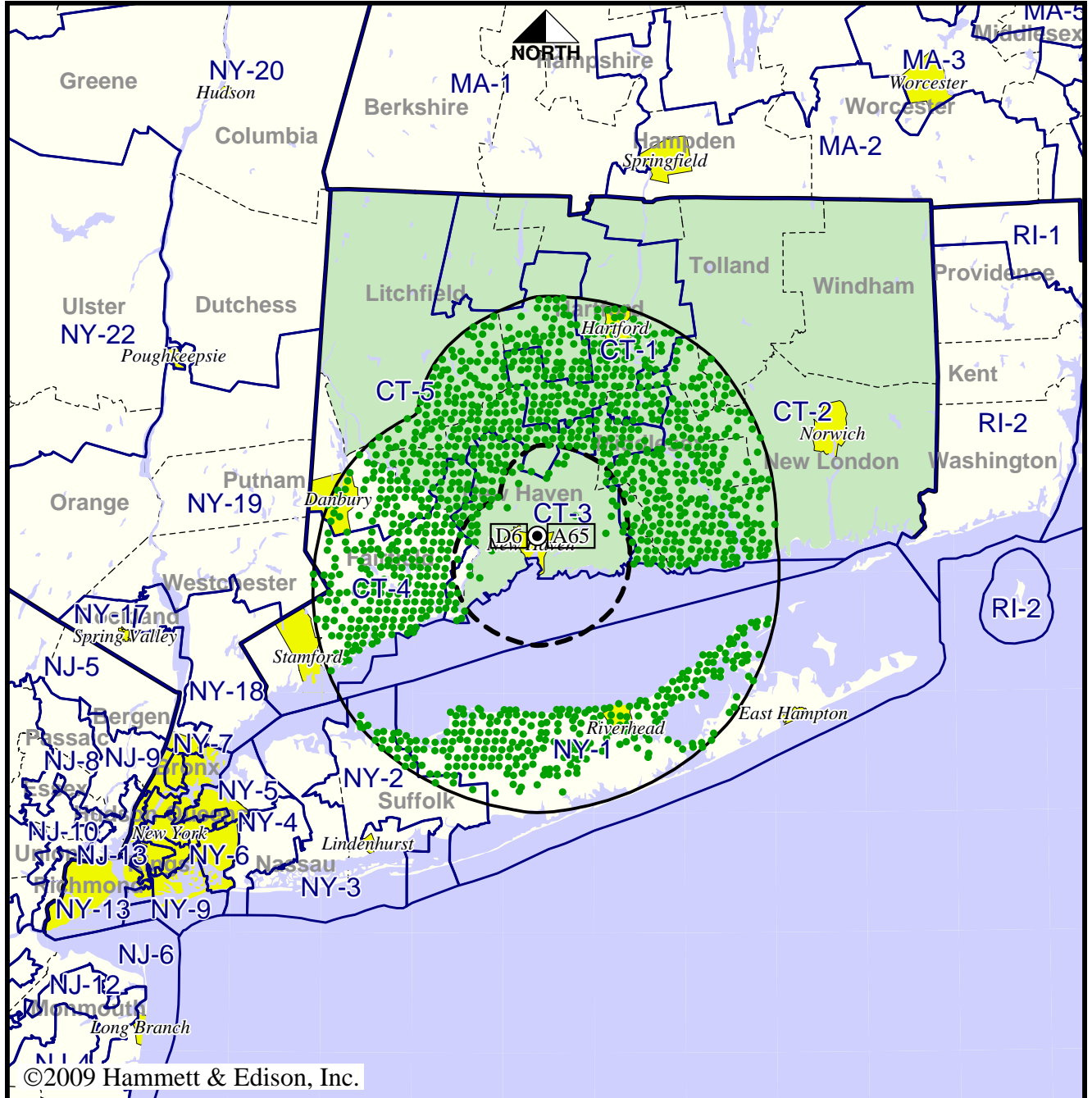
| | |
|-----------------|-----------------|
| Analog service | 658,277 persons |
| Digital service | 1,780,380 |
| Analog loss | 1,072 |
| Digital gain | 1,123,175 |
| Net gain | 1,122,103 |

TV Station WEDY • Analog Channel 65, DTV Channel 6 • New Haven, CT

Expected Operation on June 13: Granted Construction Permit

Digital CP (solid): 0.400 kW ERP at 88 m HAAT, Network: PBS
 vs. Analog (dashed): 7.94 kW ERP at 82 m HAAT, Network: PBS

Market: Hartford-New Haven, CT



©2009 Hammett & Edison, Inc.



- Coverage gained after DTV transition
- No symbol = no change in coverage

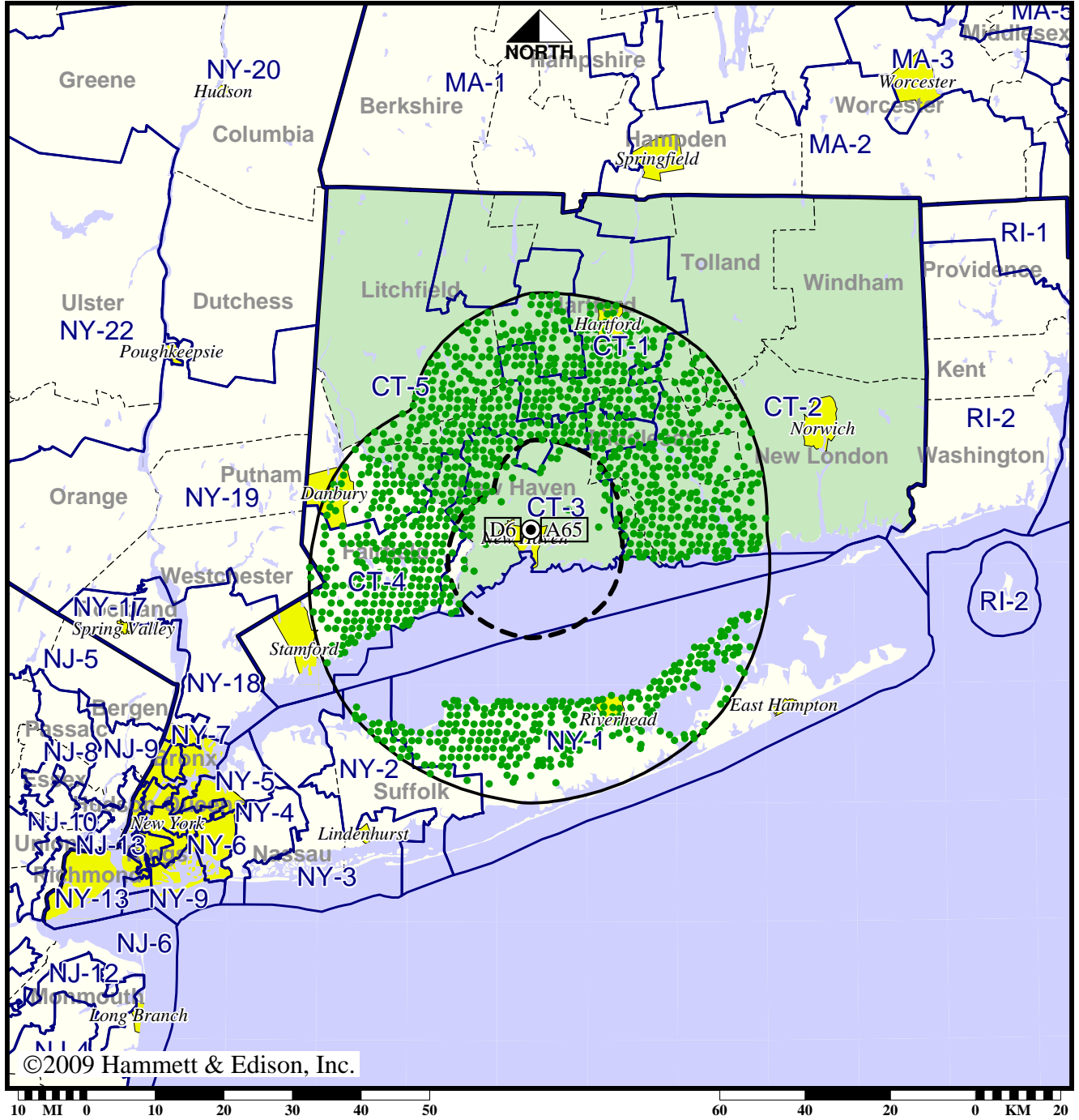
| | |
|-----------------|-----------------|
| Analog service | 498,909 persons |
| Digital service | 2,610,504 |
| Analog loss | 0 |
| Digital gain | 2,111,595 |
| Net gain | 2,111,595 |

TV Station WEDY • Analog Channel 65, DTV Channel 6 • New Haven, CT

Approved Post-Transition Operation: Granted Construction Permit

Digital CP (solid): 0.400 kW ERP at 88 m HAAT, Network: PBS
 vs. Analog (dashed): 7.94 kW ERP at 82 m HAAT, Network: PBS

Market: Hartford-New Haven, CT



©2009 Hammett & Edison, Inc.

- Coverage gained after DTV transition
- No symbol = no change in coverage

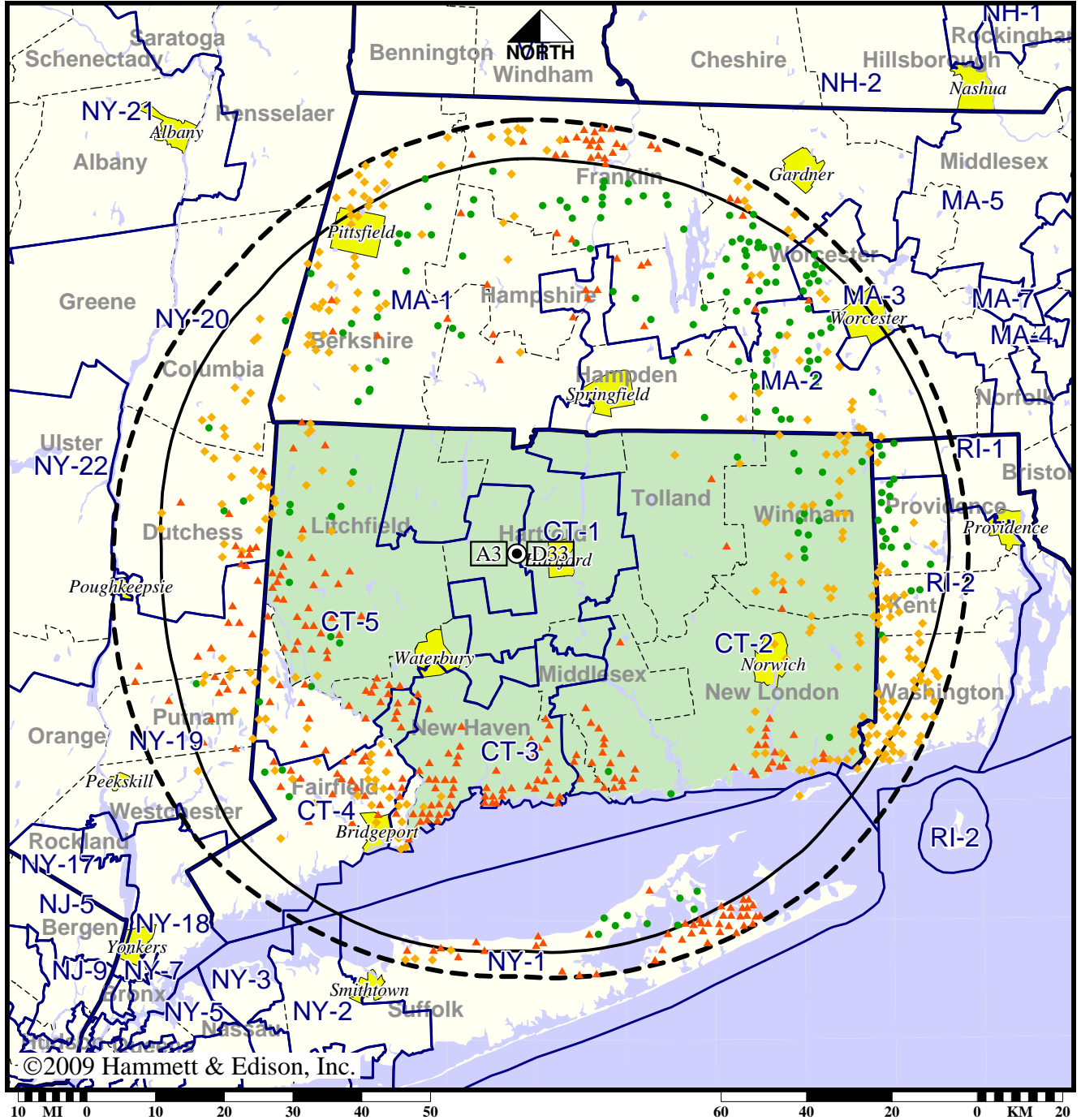
| | |
|-----------------|-----------------|
| Analog service | 498,909 persons |
| Digital service | 2,610,504 |
| Analog loss | 0 |
| Digital gain | 2,111,595 |
| Net gain | 2,111,595 |

TV Station WFSB • Analog Channel 3, DTV Channel 33 • Hartford, CT

Expected Operation on June 13: Licensed

Digital License (solid): 1000 kW ERP at 289 m HAAT, Network: CBS
 vs. Analog (dashed): 100 kW ERP at 271 m HAAT, Network: CBS

Market: Hartford-New Haven, CT



©2009 Hammett & Edison, Inc.

- Coverage gained after DTV transition
- No symbol = no change in coverage
- ◆ Coverage lost but still served by same network
- ▲ Coverage lost and no other service by same network

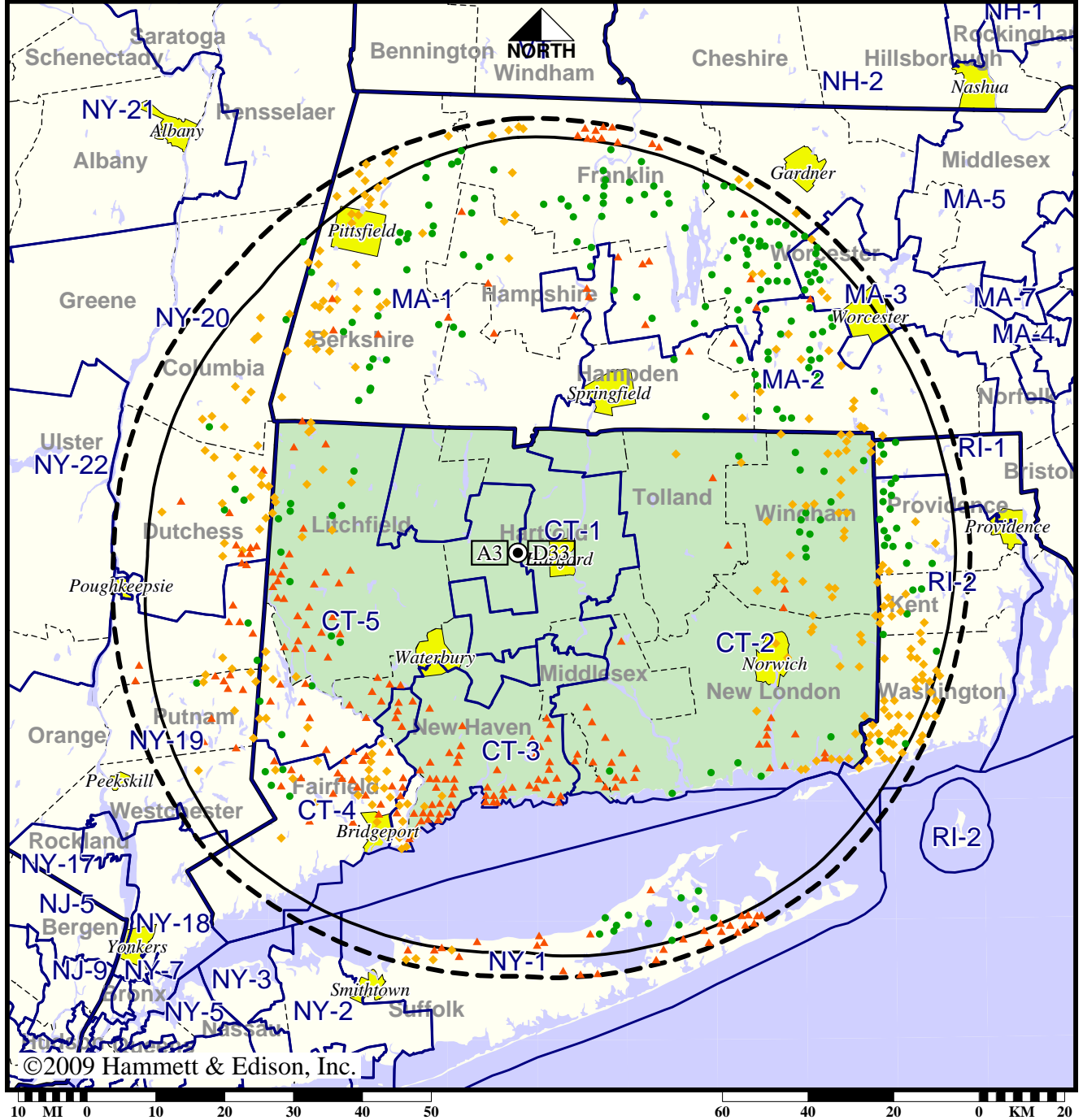
| | |
|-----------------|-------------------|
| Analog service | 3,604,315 persons |
| Digital service | 3,132,525 |
| Analog loss | 513,409 |
| Digital gain | 41,619 |
| Net gain | -471,790 |

TV Station WFSB • Analog Channel 3, DTV Channel 33 • Hartford, CT

Approved Post-Transition Operation: Granted Construction Permit

Digital CP (solid): 1000 kW ERP at 289 m HAAT, Network: CBS
 vs. Analog (dashed): 100 kW ERP at 271 m HAAT, Network: CBS

Market: Hartford-New Haven, CT



- Coverage gained after DTV transition
- No symbol = no change in coverage
- ◆ Coverage lost but still served by same network
- ▲ Coverage lost and no other service by same network

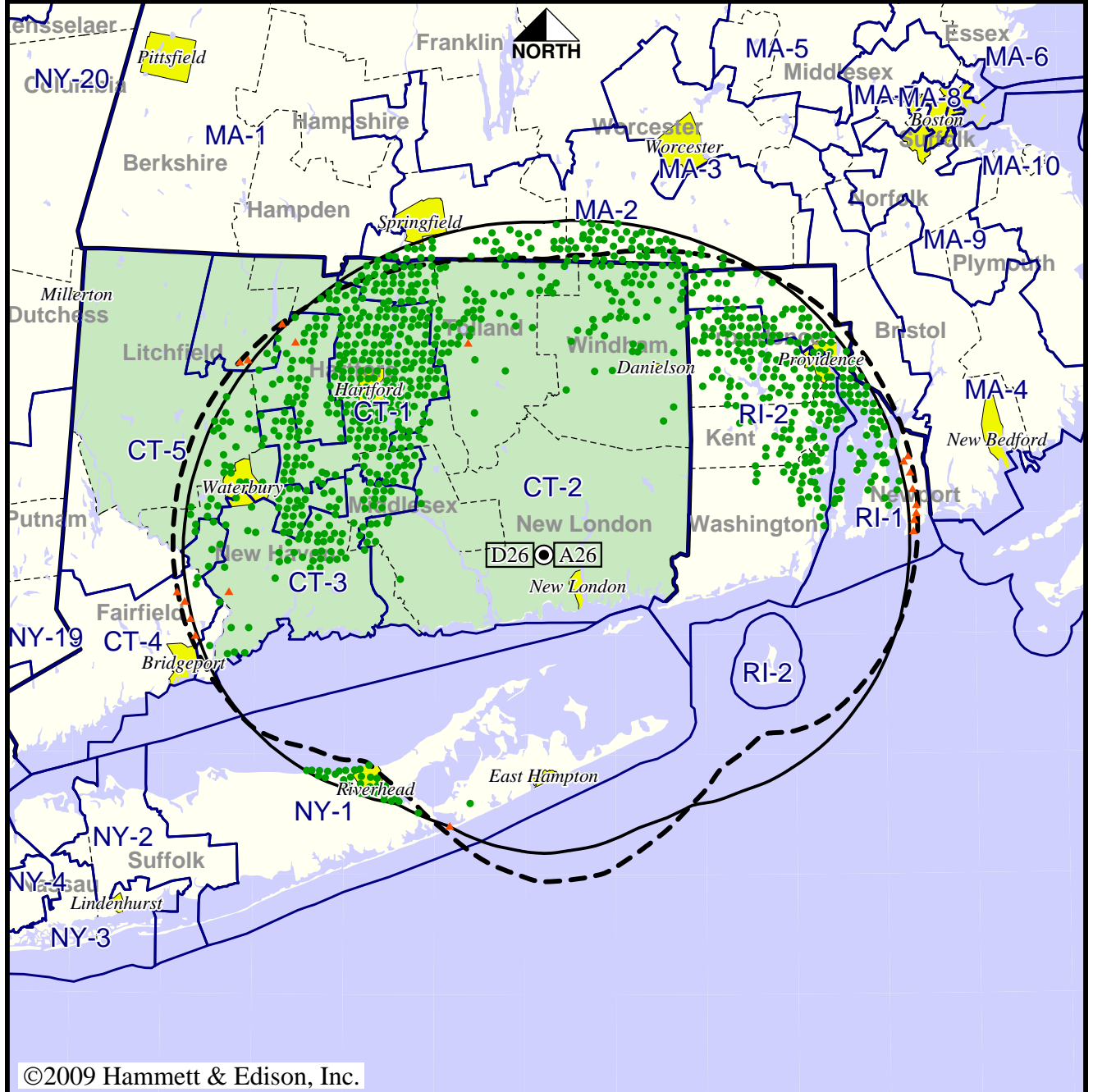
| | |
|-----------------|-------------------|
| Analog service | 3,604,315 persons |
| Digital service | 3,215,436 |
| Analog loss | 449,840 |
| Digital gain | 60,961 |
| Net gain | -388,879 |

TV Station WHPX • Analog Channel 26, DTV Channel 26 • New London, CT

Expected Operation on June 13: Appendix B Facility

Digital Appendix B (solid): 76.0 kW ERP at 368 m HAAT
 vs. Analog (dashed): 2820 kW ERP at 381 m HAAT

Market: Hartford-New Haven, CT



©2009 Hammett & Edison, Inc.

- Coverage gained after DTV transition
- No symbol = no change in coverage
- ▲ Coverage lost after DTV transition

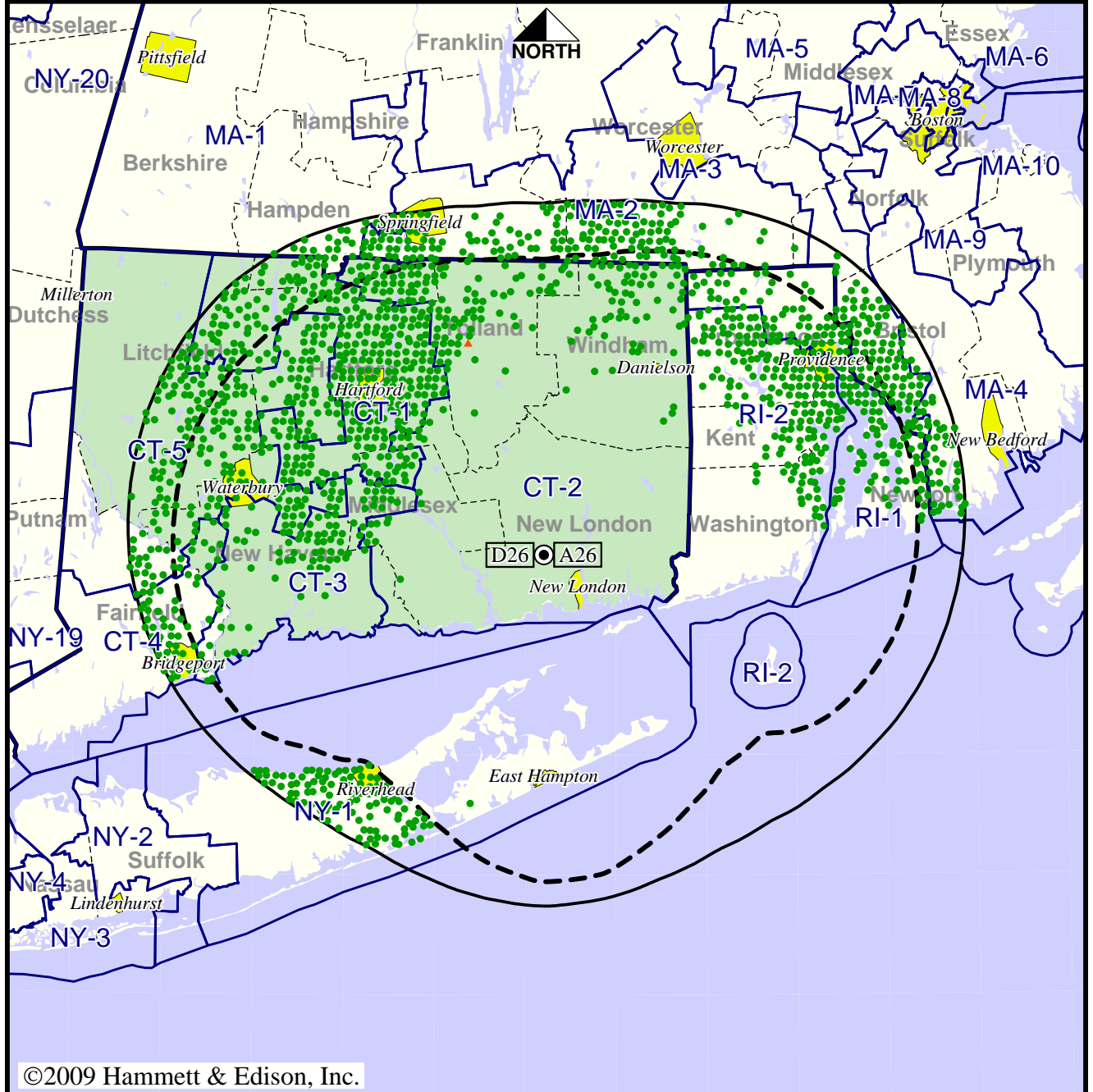
| | |
|-----------------|-------------------|
| Analog service | 1,480,651 persons |
| Digital service | 3,114,760 |
| Analog loss | 17,527 |
| Digital gain | 1,651,636 |
| Net gain | 1,634,109 |

TV Station WHPX • Analog Channel 26, DTV Channel 26 • New London, CT

Approved Post-Transition Operation: Granted Construction Permit

Digital CP (solid): 475 kW ERP at 384 m HAAT
 vs. Analog (dashed): 2820 kW ERP at 381 m HAAT

Market: Hartford-New Haven, CT



©2009 Hammett & Edison, Inc.



- Coverage gained after DTV transition
- No symbol = no change in coverage
- ▲ Coverage lost after DTV transition

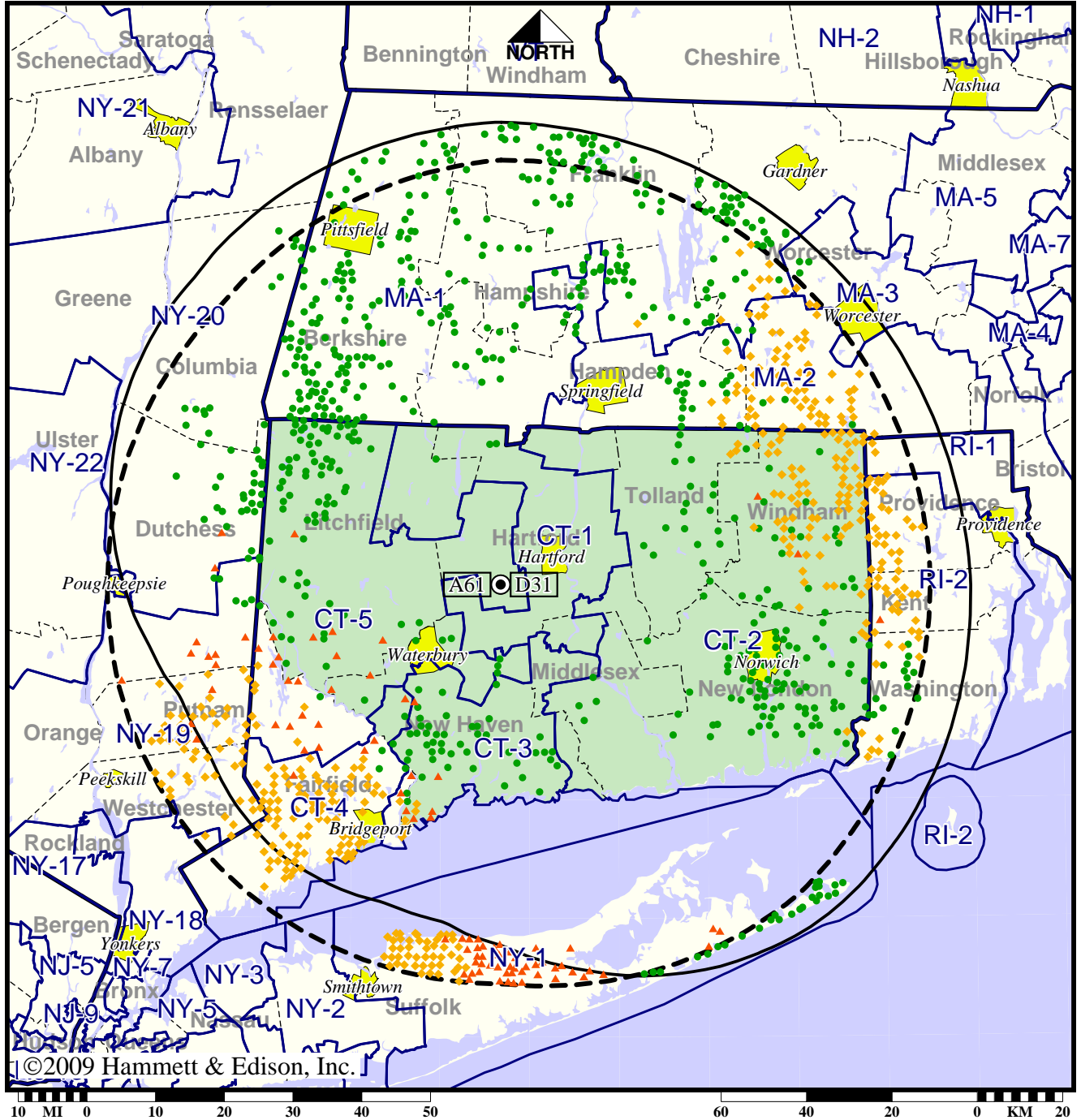
| | |
|-----------------|-------------------|
| Analog service | 1,480,651 persons |
| Digital service | 4,159,117 |
| Analog loss | 735 |
| Digital gain | 2,679,201 |
| Net gain | 2,678,466 |

Station WTIC-TV • Analog Channel 61, DTV Channel 31 • Hartford, CT

Expected Operation on June 13: Appendix B Facility

Digital Appendix B (solid): 380 kW ERP at 506 m HAAT, Network: Fox
 vs. Analog (dashed): 5000 kW ERP at 515 m HAAT, Network: Fox

Market: Hartford-New Haven, CT



- Coverage gained after DTV transition
- No symbol = no change in coverage
- ◆ Coverage lost but still served by same network
- ▲ Coverage lost and no other service by same network

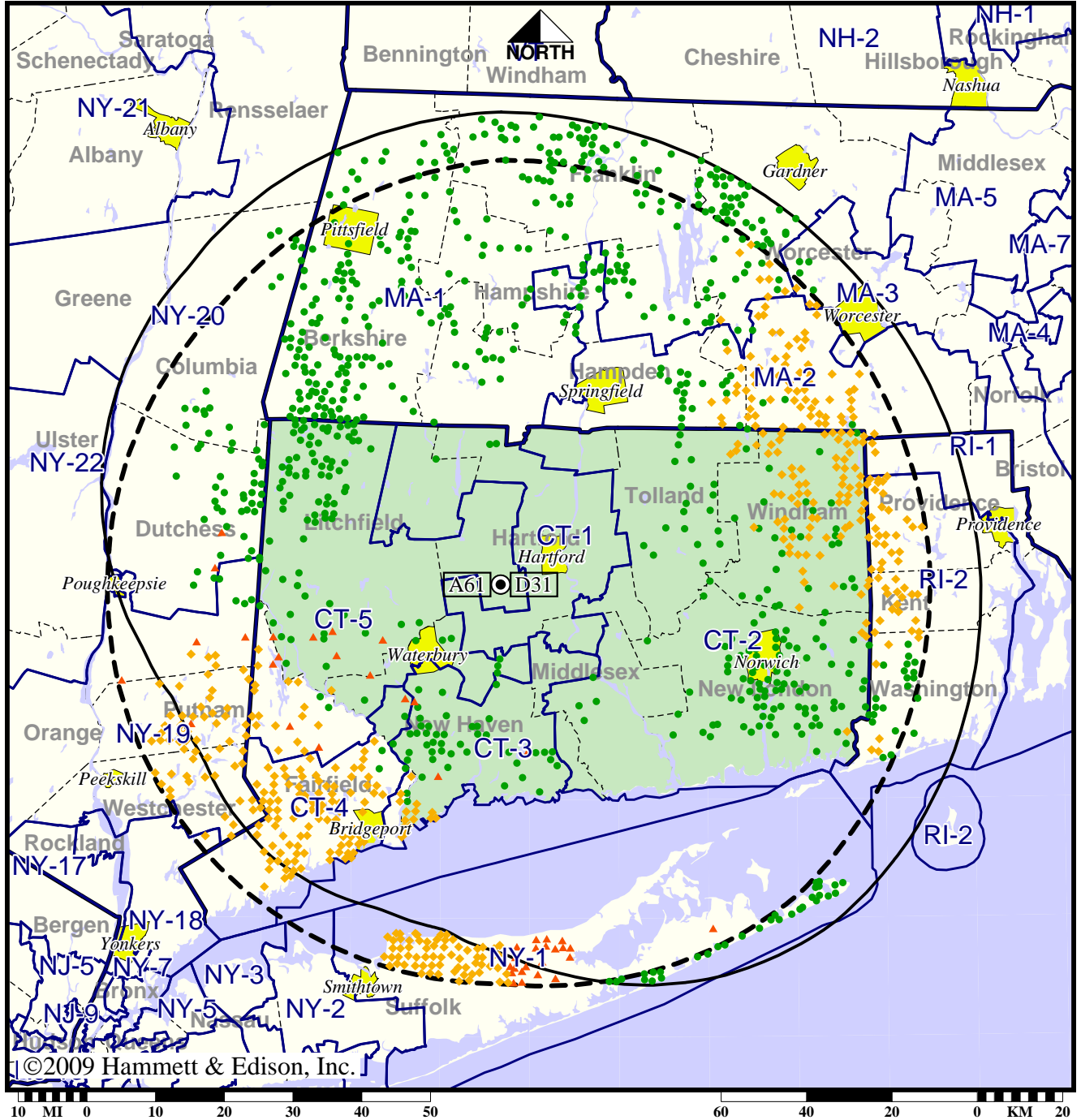
| | |
|-----------------|-------------------|
| Analog service | 3,549,395 persons |
| Digital service | 3,299,485 |
| Analog loss | 551,860 |
| Digital gain | 301,950 |
| Net gain | -249,910 |

Station WTIC-TV • Analog Channel 61, DTV Channel 31 • Hartford, CT

Approved Post-Transition Operation: Granted Construction Permit

Digital CP (solid): 495 kW ERP at 506 m HAAT, Network: Fox
 vs. Analog (dashed): 5000 kW ERP at 515 m HAAT, Network: Fox

Market: Hartford-New Haven, CT



- Coverage gained after DTV transition
- No symbol = no change in coverage
- ◆ Coverage lost but still served by same network
- ▲ Coverage lost and no other service by same network

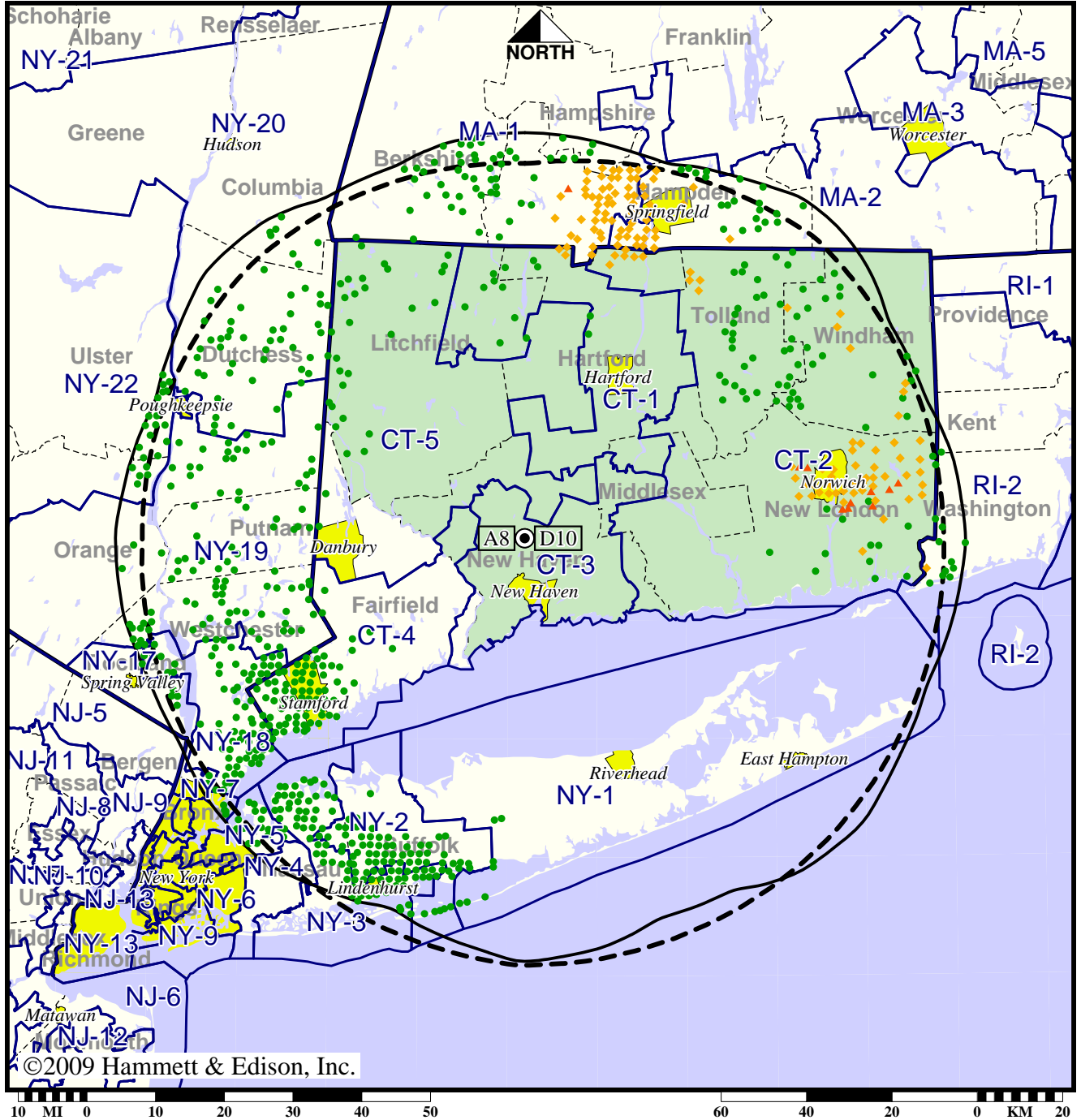
| | |
|-----------------|-------------------|
| Analog service | 3,549,395 persons |
| Digital service | 3,317,904 |
| Analog loss | 537,568 |
| Digital gain | 306,077 |
| Net gain | -231,491 |

TV Station WTNH • Analog Channel 8, DTV Channel 10 • New Haven, CT

Expected Operation on June 13: Licensed

Digital License (solid): 20.5 kW ERP at 342 m HAAT, Network: ABC
 vs. Analog (dashed): 174 kW ERP at 364 m HAAT, Network: ABC

Market: Hartford-New Haven, CT



©2009 Hammett & Edison, Inc.

- Coverage gained after DTV transition
- No symbol = no change in coverage
- ◆ Coverage lost but still served by same network
- ▲ Coverage lost and no other service by same network

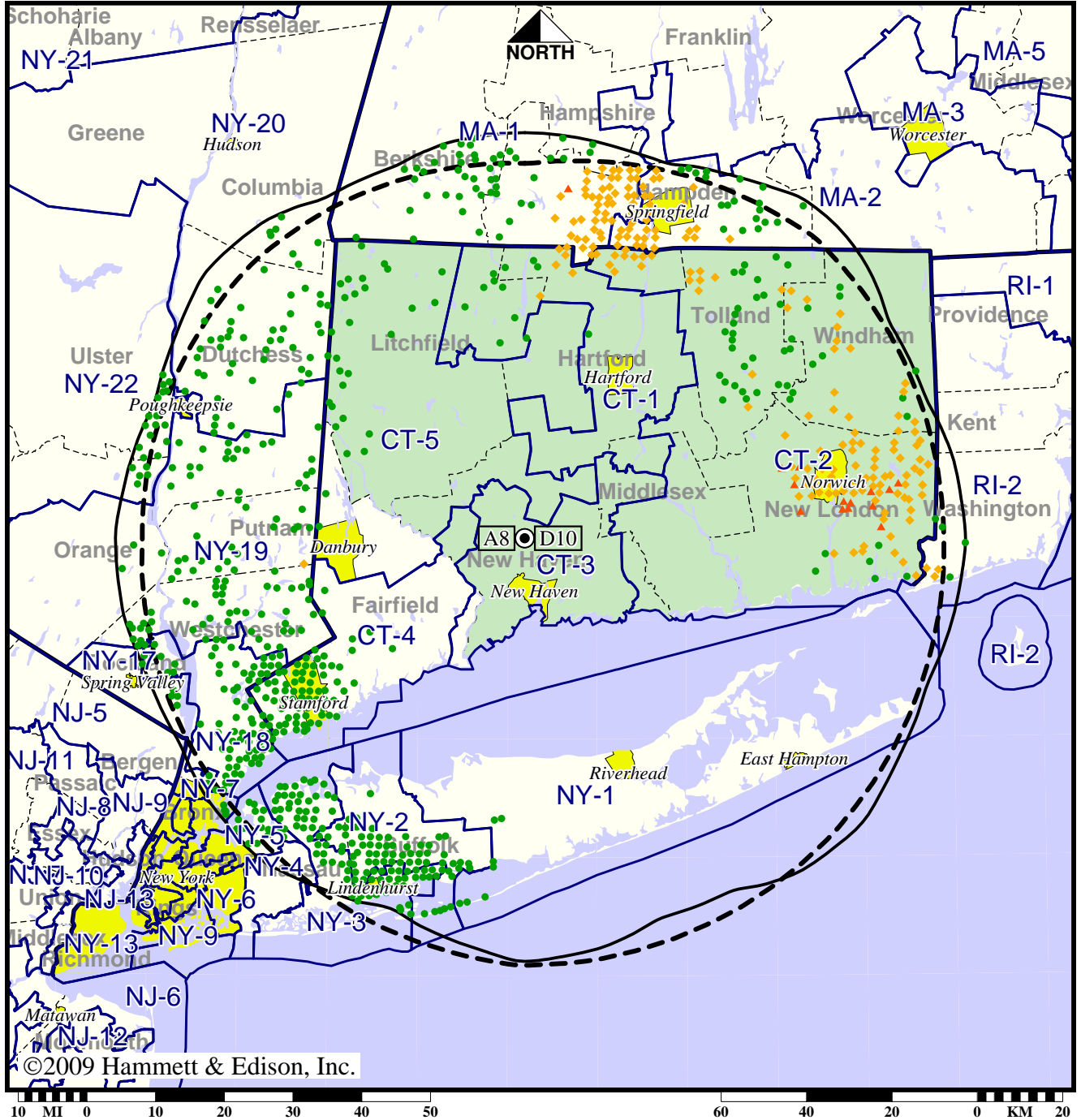
| | |
|-----------------|-------------------|
| Analog service | 4,546,043 persons |
| Digital service | 5,716,130 |
| Analog loss | 176,426 |
| Digital gain | 1,346,513 |
| Net gain | 1,170,087 |

TV Station WTNH • Analog Channel 8, DTV Channel 10 • New Haven, CT

Approved Post-Transition Operation: Licensed

Digital License (solid): 20.5 kW ERP at 342 m HAAT, Network: ABC
 vs. Analog (dashed): 174 kW ERP at 364 m HAAT, Network: ABC

Market: Hartford-New Haven, CT



©2009 Hammett & Edison, Inc.

- Coverage gained after DTV transition
- No symbol = no change in coverage
- ◆ Coverage lost but still served by same network
- ▲ Coverage lost and no other service by same network

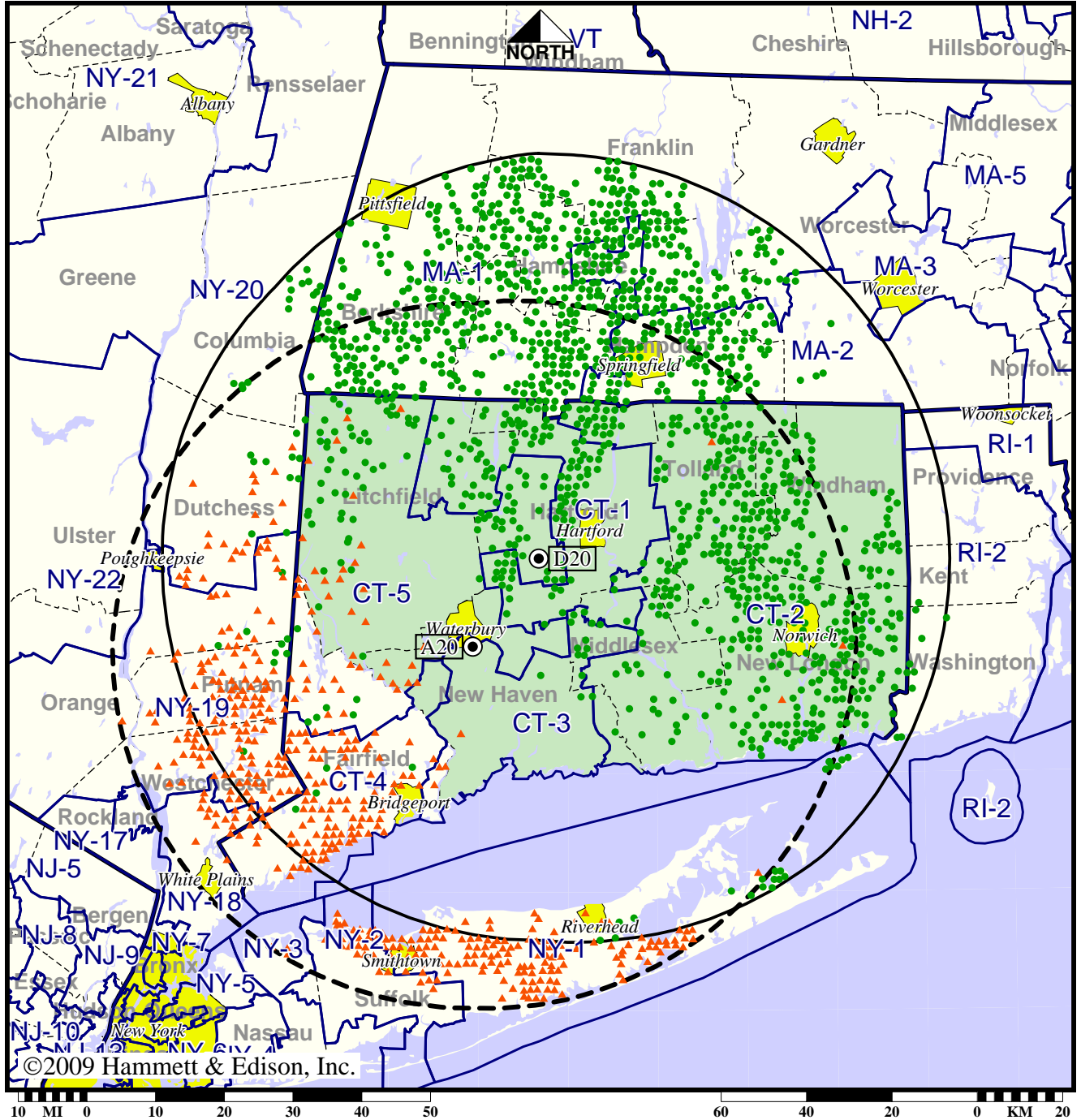
| | |
|-----------------|-------------------|
| Analog service | 4,546,043 persons |
| Digital service | 5,666,687 |
| Analog loss | 212,891 |
| Digital gain | 1,333,535 |
| Net gain | 1,120,644 |

TV Station WTXX • Analog Channel 20, DTV Channel 20 • Waterbury, CT

Expected Operation on June 13: Granted Construction Permit

Digital CP (solid): 52.0 kW ERP at 516 m HAAT
 vs. Analog (dashed): 2240 kW ERP at 366 m HAAT

Market: Hartford-New Haven, CT



- Coverage gained after DTV transition
- No symbol = no change in coverage
- ▲ Coverage lost after DTV transition

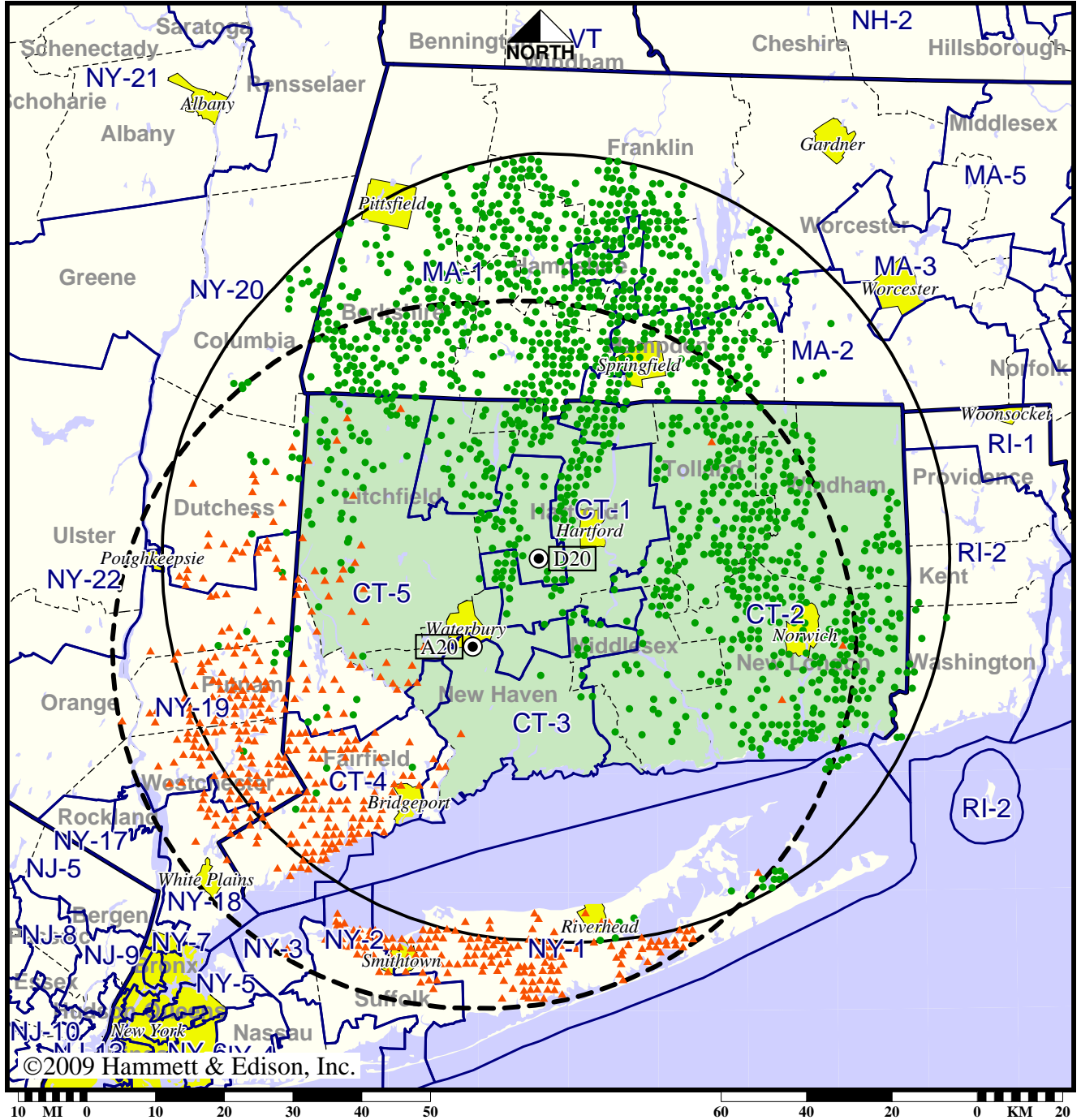
| | |
|-----------------|-------------------|
| Analog service | 3,428,223 persons |
| Digital service | 3,584,891 |
| Analog loss | 784,352 |
| Digital gain | 941,020 |
| Net gain | 156,668 |

TV Station WTXX • Analog Channel 20, DTV Channel 20 • Waterbury, CT

Approved Post-Transition Operation: Granted Construction Permit

Digital CP (solid): 52.0 kW ERP at 516 m HAAT
 vs. Analog (dashed): 2240 kW ERP at 366 m HAAT

Market: Hartford-New Haven, CT



- Coverage gained after DTV transition
- No symbol = no change in coverage
- ▲ Coverage lost after DTV transition

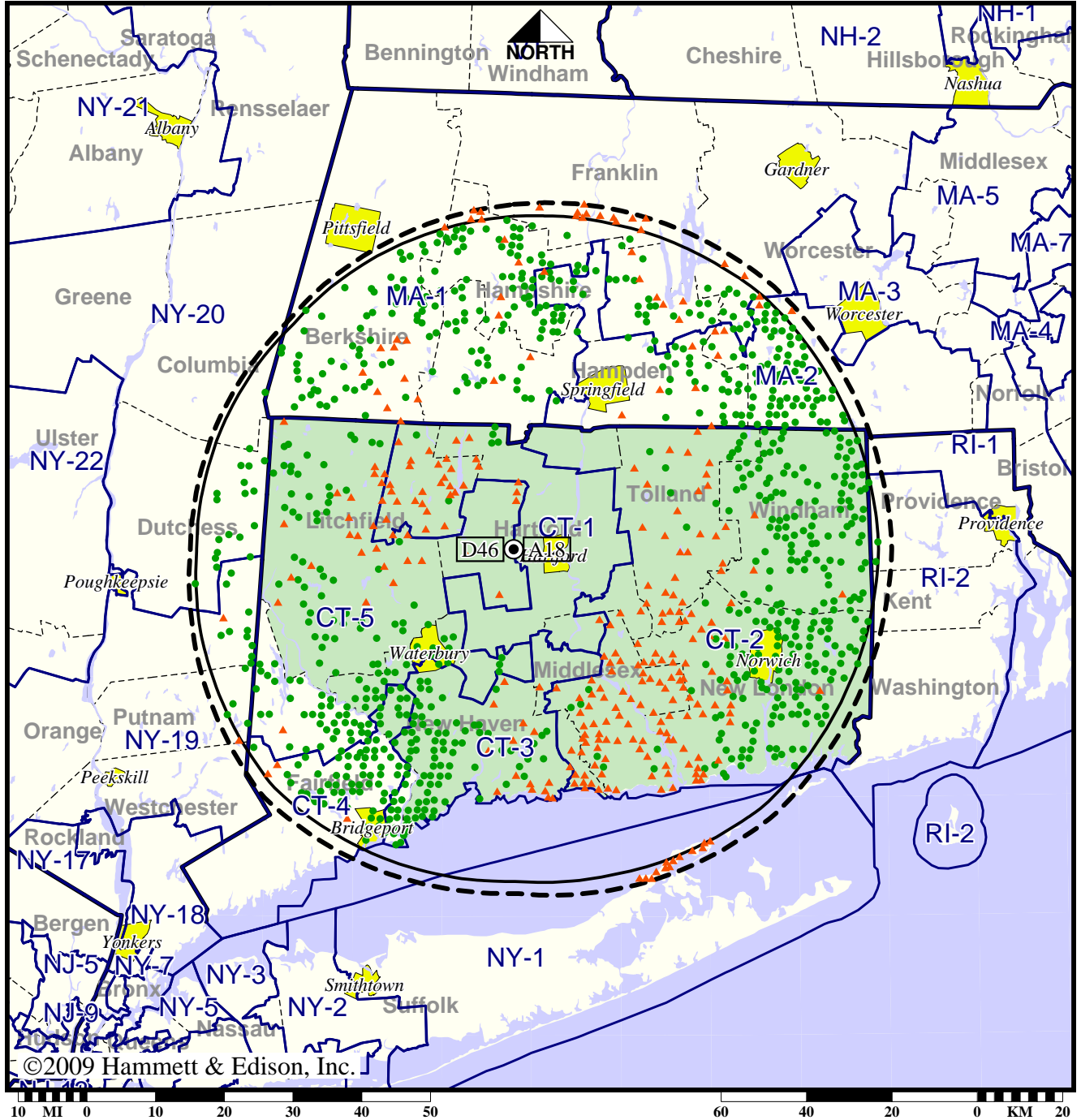
| | |
|-----------------|-------------------|
| Analog service | 3,428,223 persons |
| Digital service | 3,584,891 |
| Analog loss | 784,352 |
| Digital gain | 941,020 |
| Net gain | 156,668 |

TV Station WUVN • Analog Channel 18, DTV Channel 46 • Hartford, CT

Expected Operation on June 13: Licensed

Digital License (solid): 217 kW ERP at 269 m HAAT
 vs. Analog (dashed): 3160 kW ERP at 299 m HAAT

Market: Hartford-New Haven, CT



- Coverage gained after DTV transition
- No symbol = no change in coverage
- ▲ Coverage lost after DTV transition

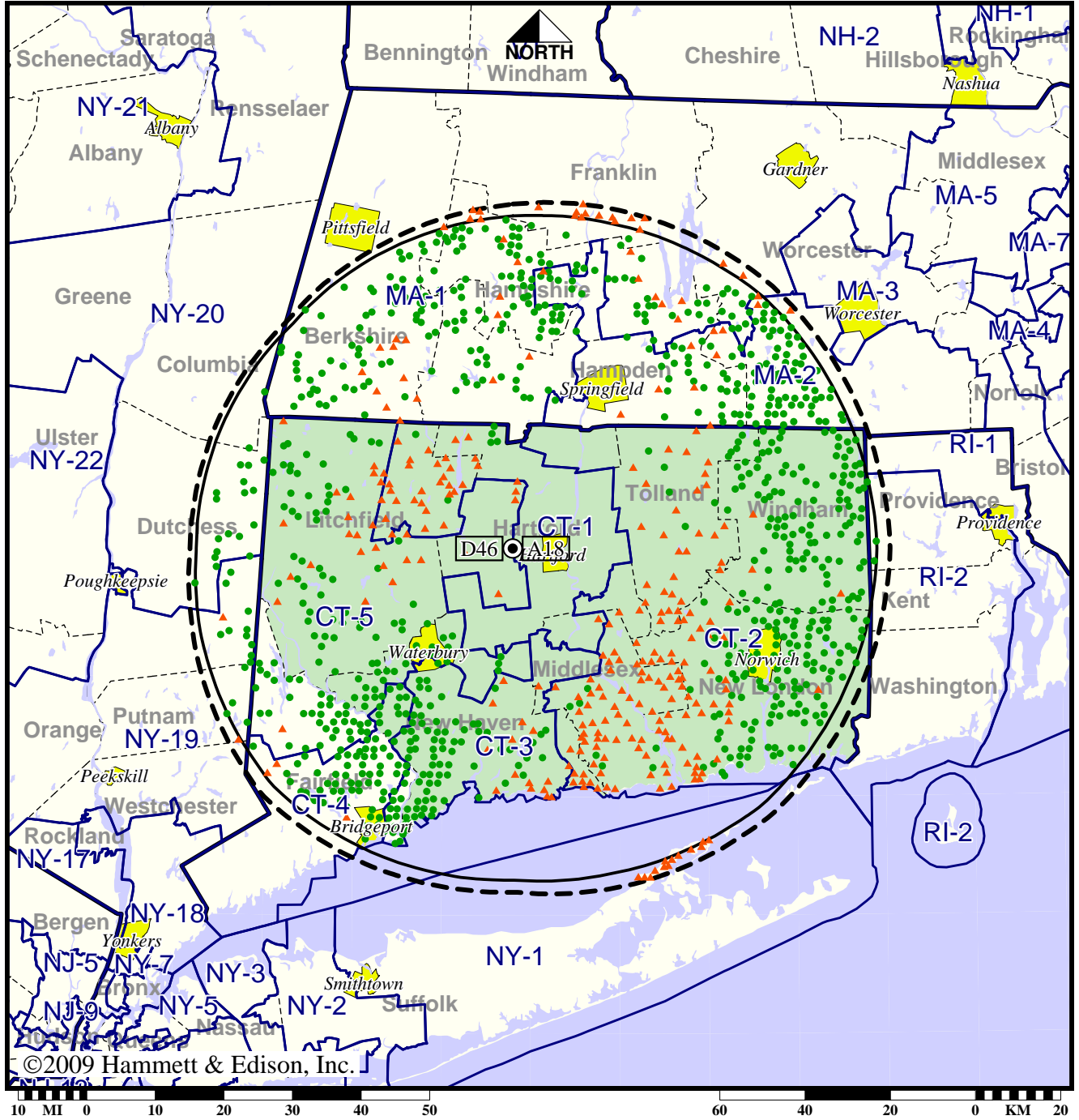
| | |
|-----------------|-------------------|
| Analog service | 2,495,739 persons |
| Digital service | 3,099,356 |
| Analog loss | 123,671 |
| Digital gain | 727,288 |
| Net gain | 603,617 |

TV Station WUVN • Analog Channel 18, DTV Channel 46 • Hartford, CT

Approved Post-Transition Operation: Licensed

Digital License (solid): 217 kW ERP at 269 m HAAT
 vs. Analog (dashed): 3160 kW ERP at 299 m HAAT

Market: Hartford-New Haven, CT



- Coverage gained after DTV transition
- No symbol = no change in coverage
- ▲ Coverage lost after DTV transition

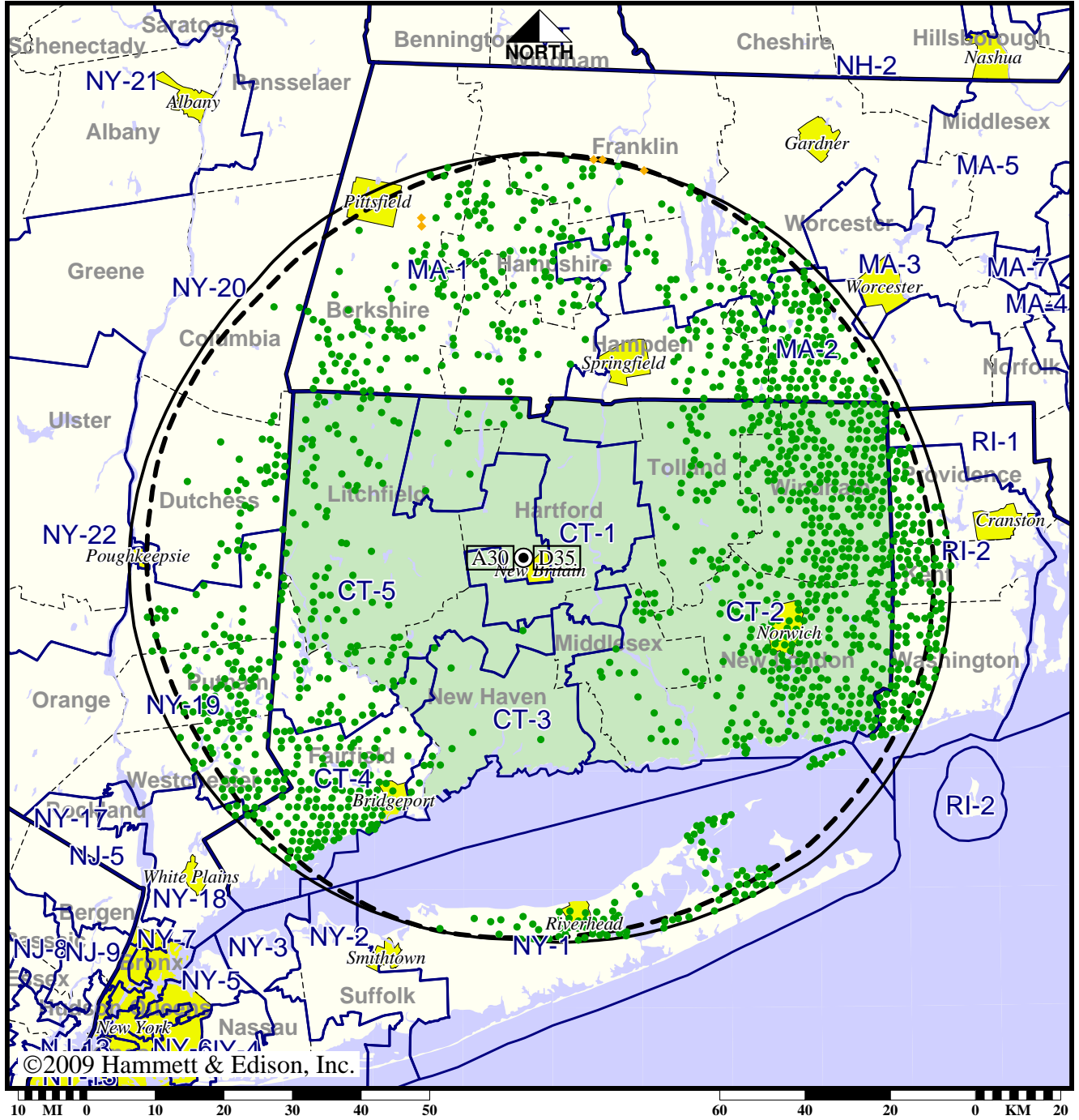
| | |
|-----------------|-------------------|
| Analog service | 2,495,739 persons |
| Digital service | 3,099,356 |
| Analog loss | 123,671 |
| Digital gain | 727,288 |
| Net gain | 603,617 |

TV Station WVIT • Analog Channel 30, DTV Channel 35 • New Britain, CT

Expected Operation on June 13: Licensed

Digital License (solid): 250 kW ERP at 434 m HAAT, Network: NBC
 vs. Analog (dashed): 3090 kW ERP at 451 m HAAT, Network: NBC

Market: Hartford-New Haven, CT



- Coverage gained after DTV transition
- No symbol = no change in coverage
- ◆ Coverage lost but still served by same network

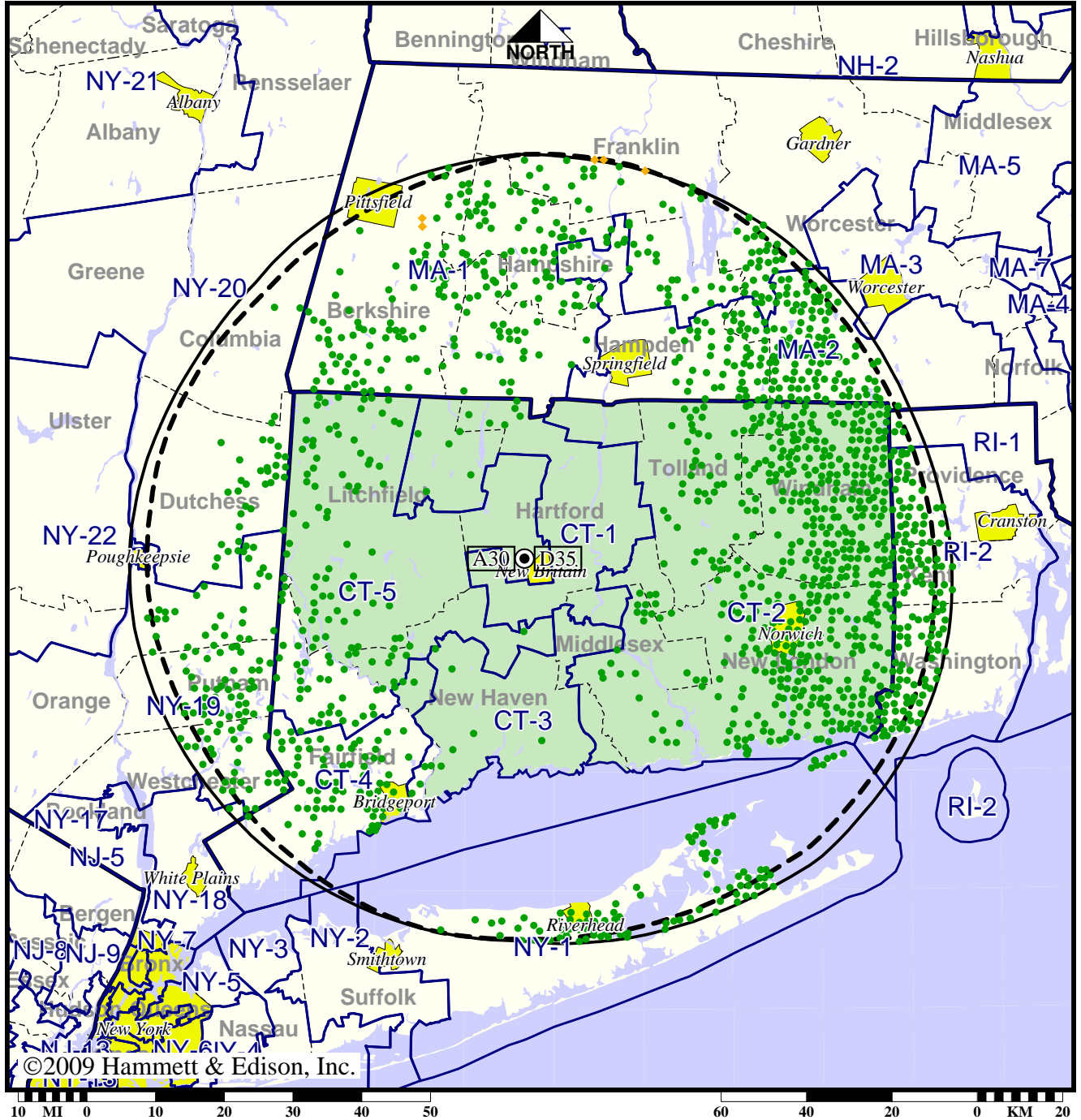
| | |
|-----------------|-------------------|
| Analog service | 3,155,553 persons |
| Digital service | 4,163,246 |
| Analog loss | 470 |
| Digital gain | 1,008,163 |
| Net gain | 1,007,693 |

TV Station WVIT • Analog Channel 30, DTV Channel 35 • New Britain, CT

Approved Post-Transition Operation: Licensed

Digital License (solid): 250 kW ERP at 434 m HAAT, Network: NBC
 vs. Analog (dashed): 3090 kW ERP at 451 m HAAT, Network: NBC

Market: Hartford-New Haven, CT



- Coverage gained after DTV transition
- No symbol = no change in coverage
- ◆ Coverage lost but still served by same network

| | |
|-----------------|-------------------|
| Analog service | 3,155,553 persons |
| Digital service | 4,028,481 |
| Analog loss | 470 |
| Digital gain | 873,398 |
| Net gain | 872,928 |