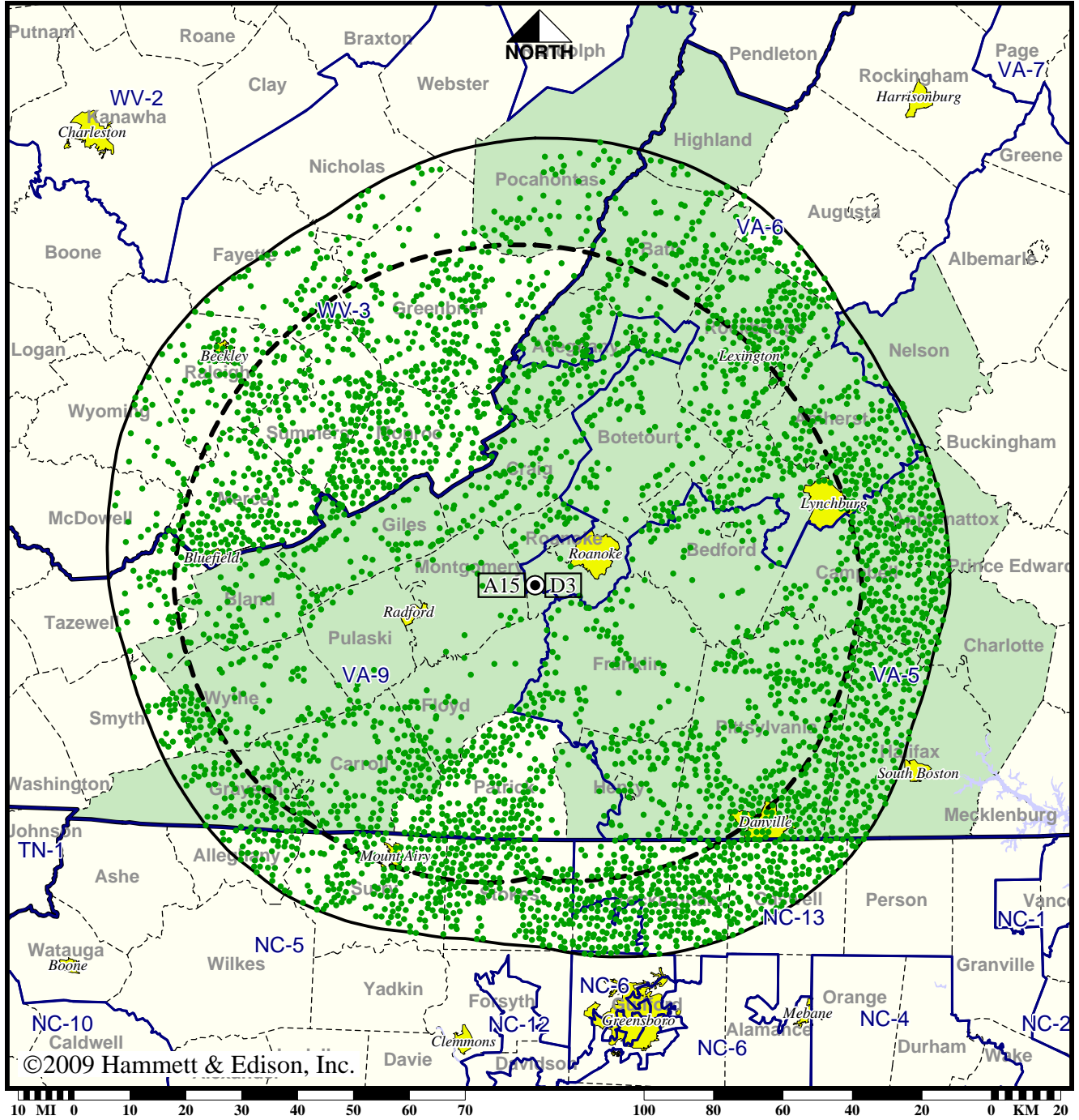


Station WBRA-TV • Analog Channel 15, DTV Channel 3 • Roanoke, VA

Expected Operation on June 13: Licensed

Digital License (solid): 7.25 kW ERP at 618 m HAAT, Network: PBS  
 vs. Analog (dashed): 1820 kW ERP at 634 m HAAT, Network: PBS

Market: Roanoke-Lynchburg, VA



● Coverage gained after DTV transition  
 No symbol = no change in coverage

Analog service	715,248 persons
Digital service	1,369,196
Analog loss	0
Digital gain	653,948
Net gain	653,948

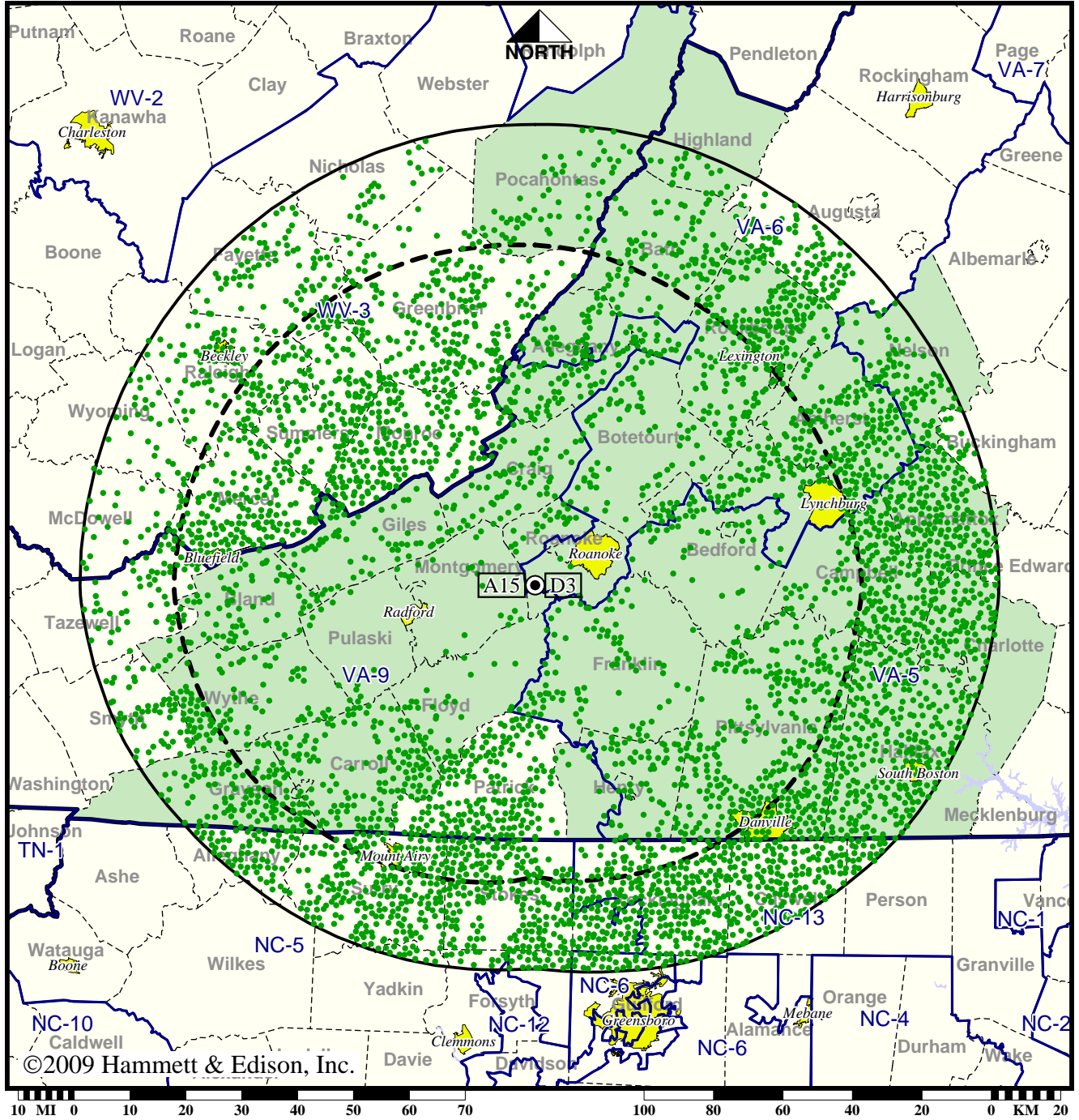
BLEDT-20030430AAG  
 WBRA-TV Digital License

Station WBRA-TV • Analog Channel 15, DTV Channel 3 • Roanoke, VA

Approved Post-Transition Operation: Granted Construction Permit

Digital CP (solid): 9.80 kW ERP at 614 m HAAT, Network: PBS  
 vs. Analog (dashed): 1820 kW ERP at 634 m HAAT, Network: PBS

Market: Roanoke-Lynchburg, VA



● Coverage gained after DTV transition  
 No symbol = no change in coverage

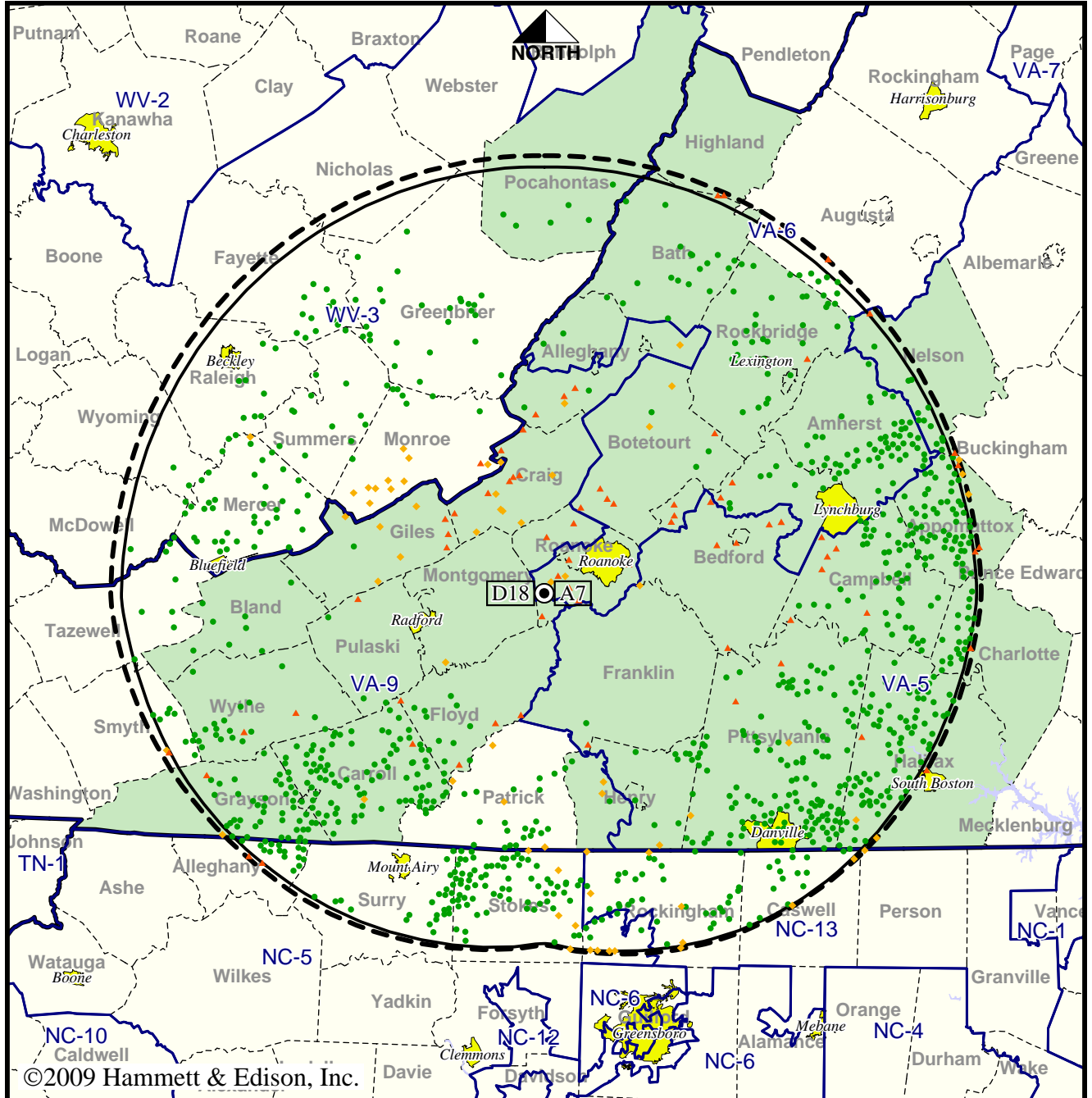
Analog service	715,248 persons
Digital service	1,497,674
Analog loss	0
Digital gain	782,426
Net gain	782,426

TV Station WDBJ • Analog Channel 7, DTV Channel 18 • Roanoke, VA

Expected Operation on June 13: Licensed

Digital License (solid): 460 kW ERP at 606 m HAAT, Network: CBS  
 vs. Analog (dashed): 316 kW ERP at 610 m HAAT, Network: CBS

Market: Roanoke-Lynchburg, VA



©2009 Hammett & Edison, Inc.

- Coverage gained after DTV transition
- No symbol = no change in coverage
- ◆ Coverage lost but still served by same network
- ▲ Coverage lost and no other service by same network

Analog service	1,007,598 persons
Digital service	1,134,701
Analog loss	19,926
Digital gain	147,029
Net gain	127,103

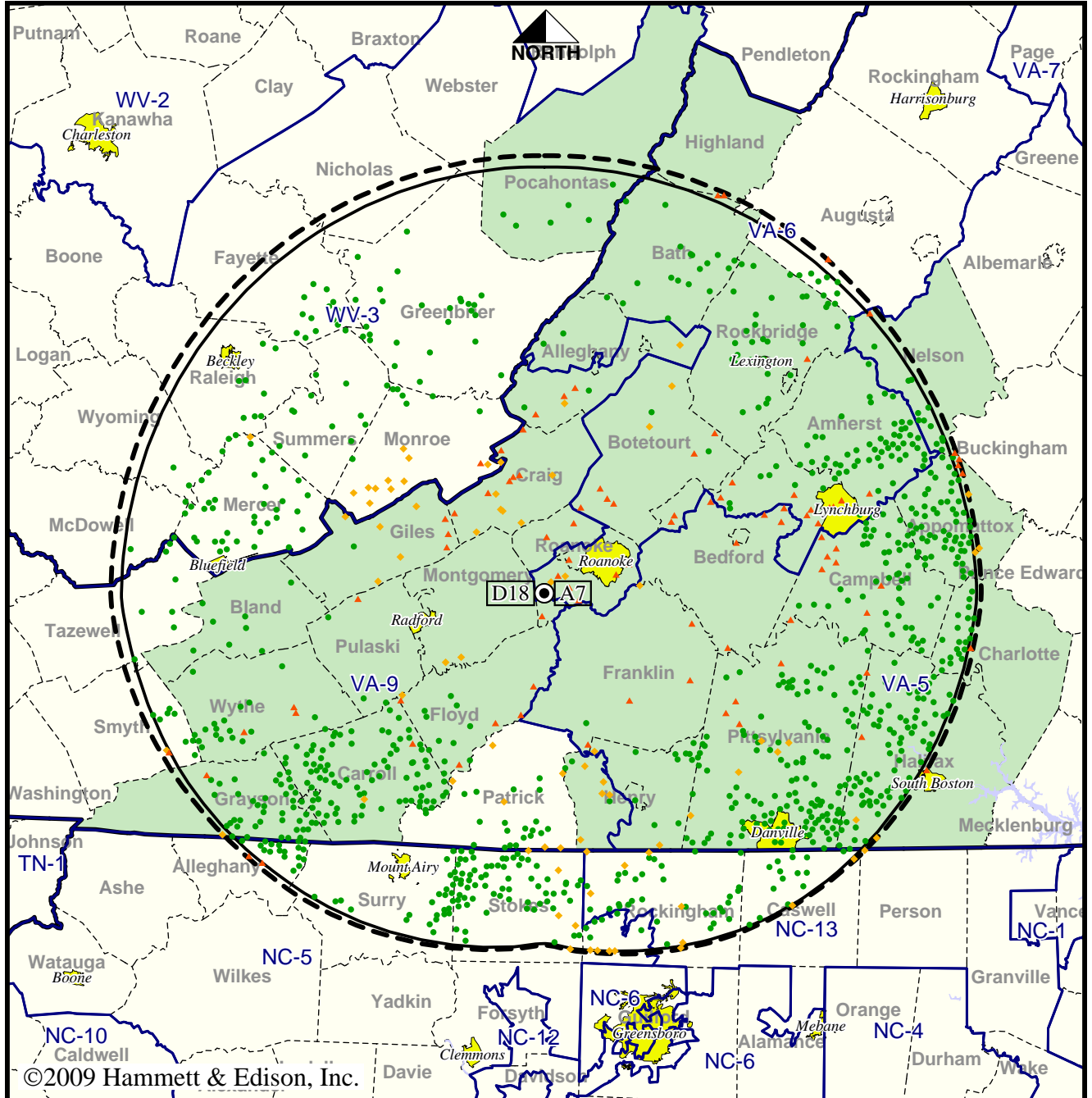


TV Station WDBJ • Analog Channel 7, DTV Channel 18 • Roanoke, VA

Approved Post-Transition Operation: Licensed

Digital License (solid): 460 kW ERP at 606 m HAAT, Network: CBS  
 vs. Analog (dashed): 316 kW ERP at 610 m HAAT, Network: CBS

Market: Roanoke-Lynchburg, VA



- Coverage gained after DTV transition
- No symbol = no change in coverage
- ◆ Coverage lost but still served by same network
- ▲ Coverage lost and no other service by same network

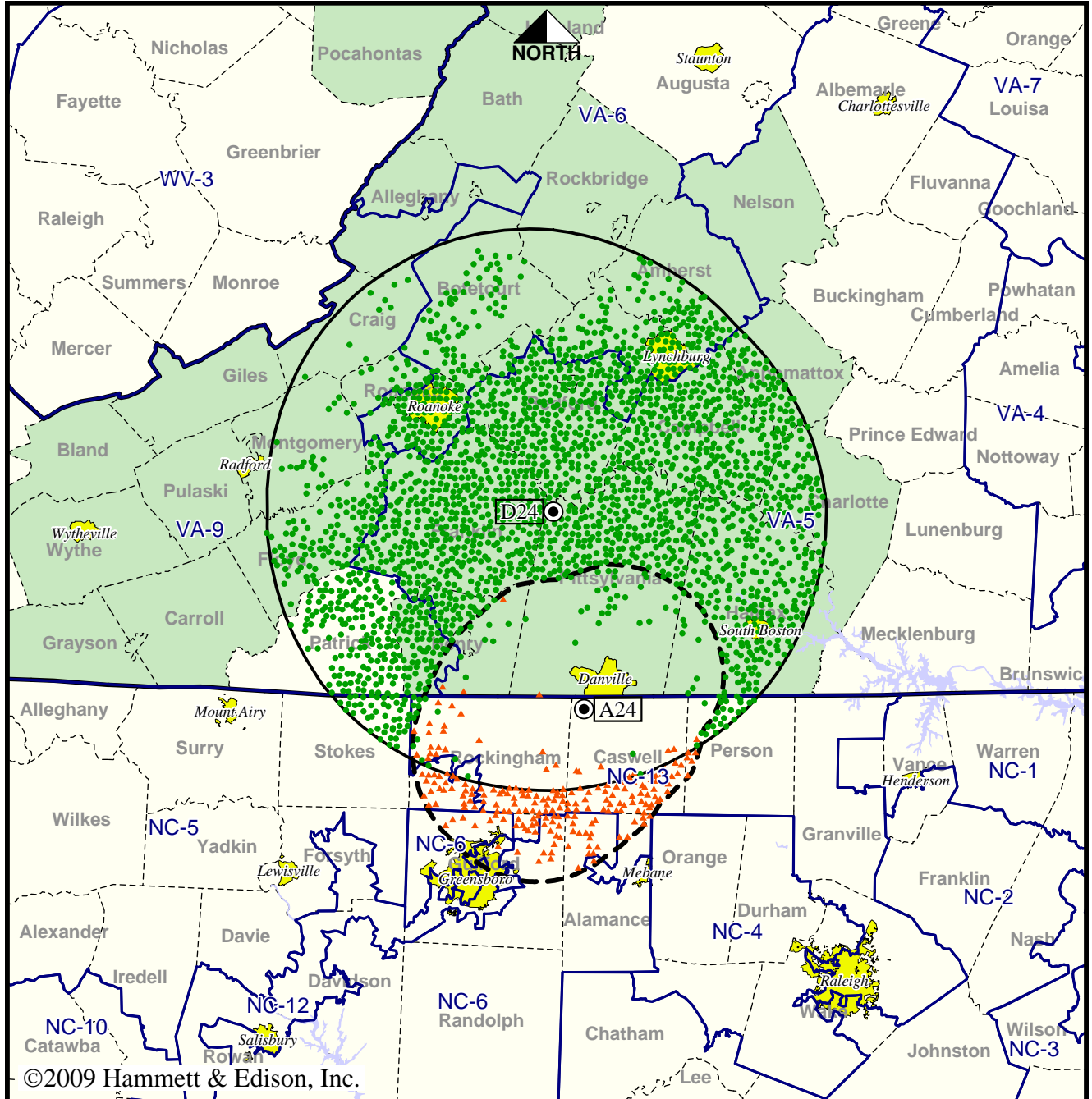
Analog service	1,007,598 persons
Digital service	1,122,995
Analog loss	30,476
Digital gain	145,873
Net gain	115,397

Station WDRL-TV • Analog Channel 24, DTV Channel 24 • Danville, VA

Expected Operation on June 13: Granted Construction Permit

Digital CP (solid): 63.0 kW ERP at 378 m HAAT  
 vs. Analog (dashed): 1150 kW ERP at 107 m HAAT

Market: Roanoke-Lynchburg, VA



- Coverage gained after DTV transition
- No symbol = no change in coverage
- ▲ Coverage lost after DTV transition

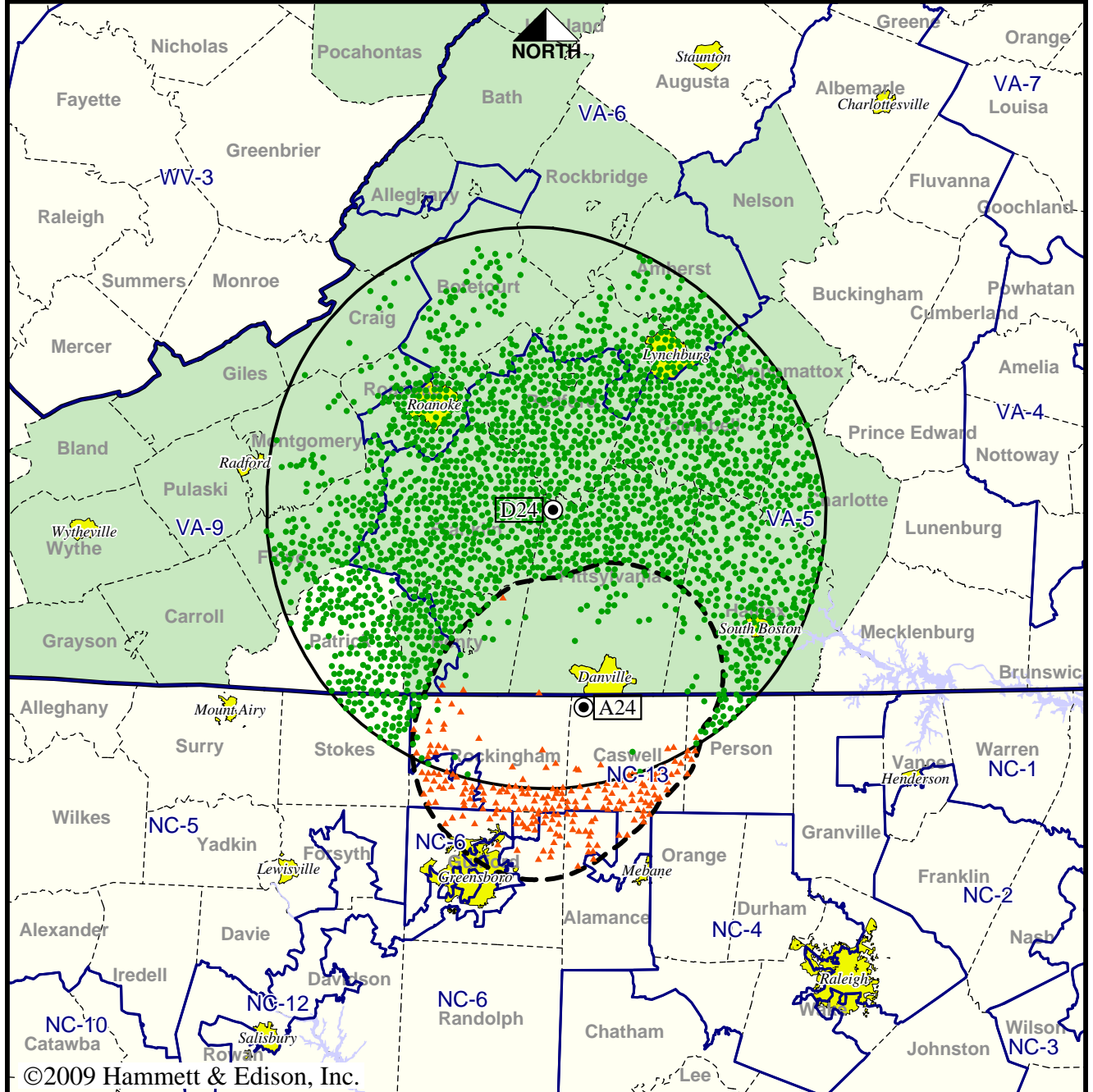
Analog service	242,793 persons
Digital service	798,407
Analog loss	35,518
Digital gain	591,132
Net gain	555,614

Station WDRL-TV • Analog Channel 24, DTV Channel 24 • Danville, VA

Approved Post-Transition Operation: Granted Construction Permit

Digital CP (solid): 63.0 kW ERP at 378 m HAAT  
 vs. Analog (dashed): 1150 kW ERP at 107 m HAAT

Market: Roanoke-Lynchburg, VA



- Coverage gained after DTV transition
- No symbol = no change in coverage
- ▲ Coverage lost after DTV transition

Analog service	242,793 persons
Digital service	797,045
Analog loss	36,787
Digital gain	591,039
Net gain	554,252

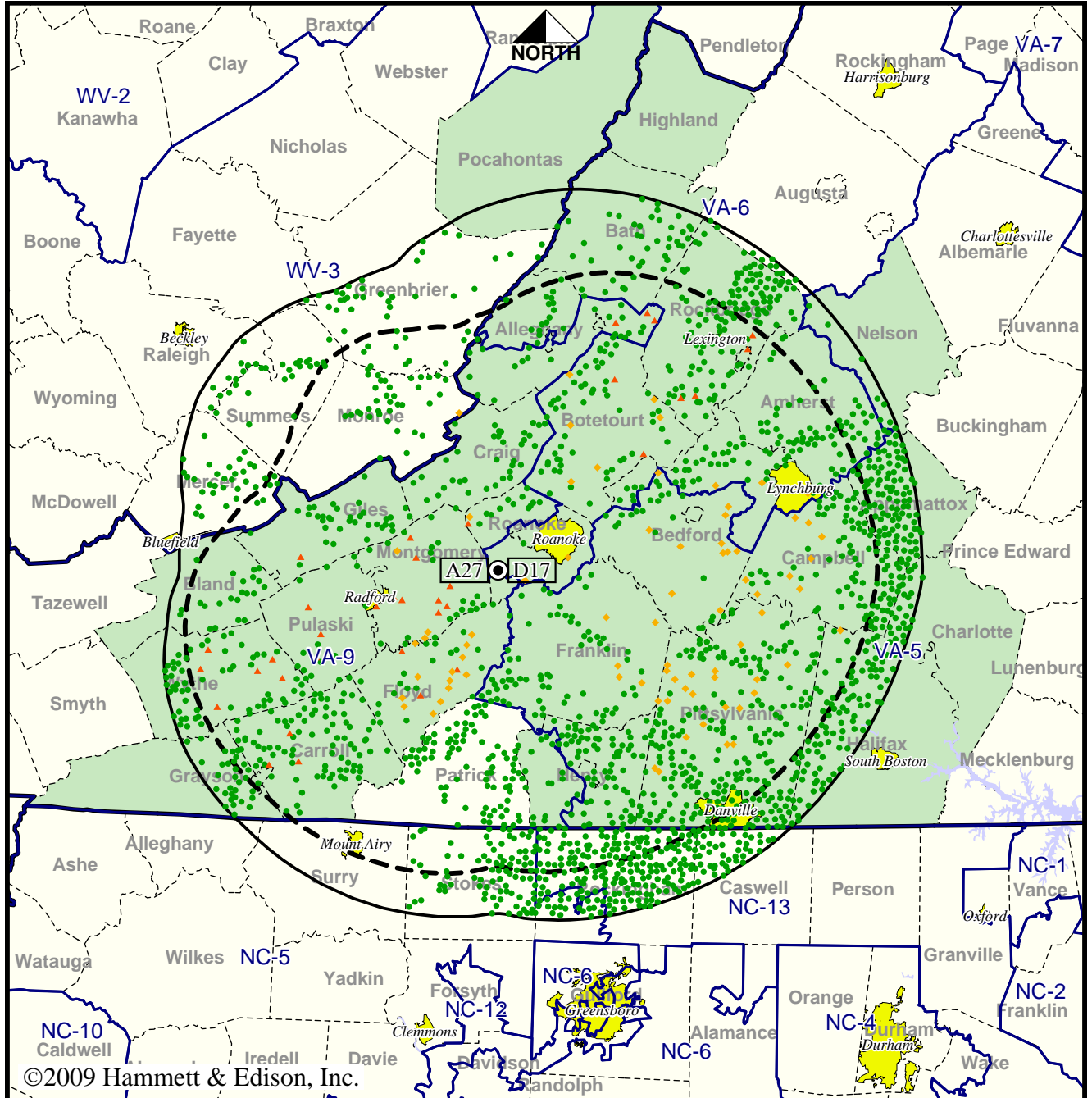


Station WFXR-TV • Analog Channel 27, DTV Channel 17 • Roanoke, VA

Expected Operation on June 13: Appendix B Facility

Digital Appendix B (solid): 400 kW ERP at 594 m HAAT, Network: Fox  
 vs. Analog (dashed): 2690 kW ERP at 607 m HAAT, Network: Fox

Market: Roanoke-Lynchburg, VA



©2009 Hammett & Edison, Inc.

10 MI 0 10 20 30 40 50 60 70 100 80 60 40 20 0 KM 20

- Coverage gained after DTV transition
- No symbol = no change in coverage
- ◆ Coverage lost but still served by same network
- ▲ Coverage lost and no other service by same network

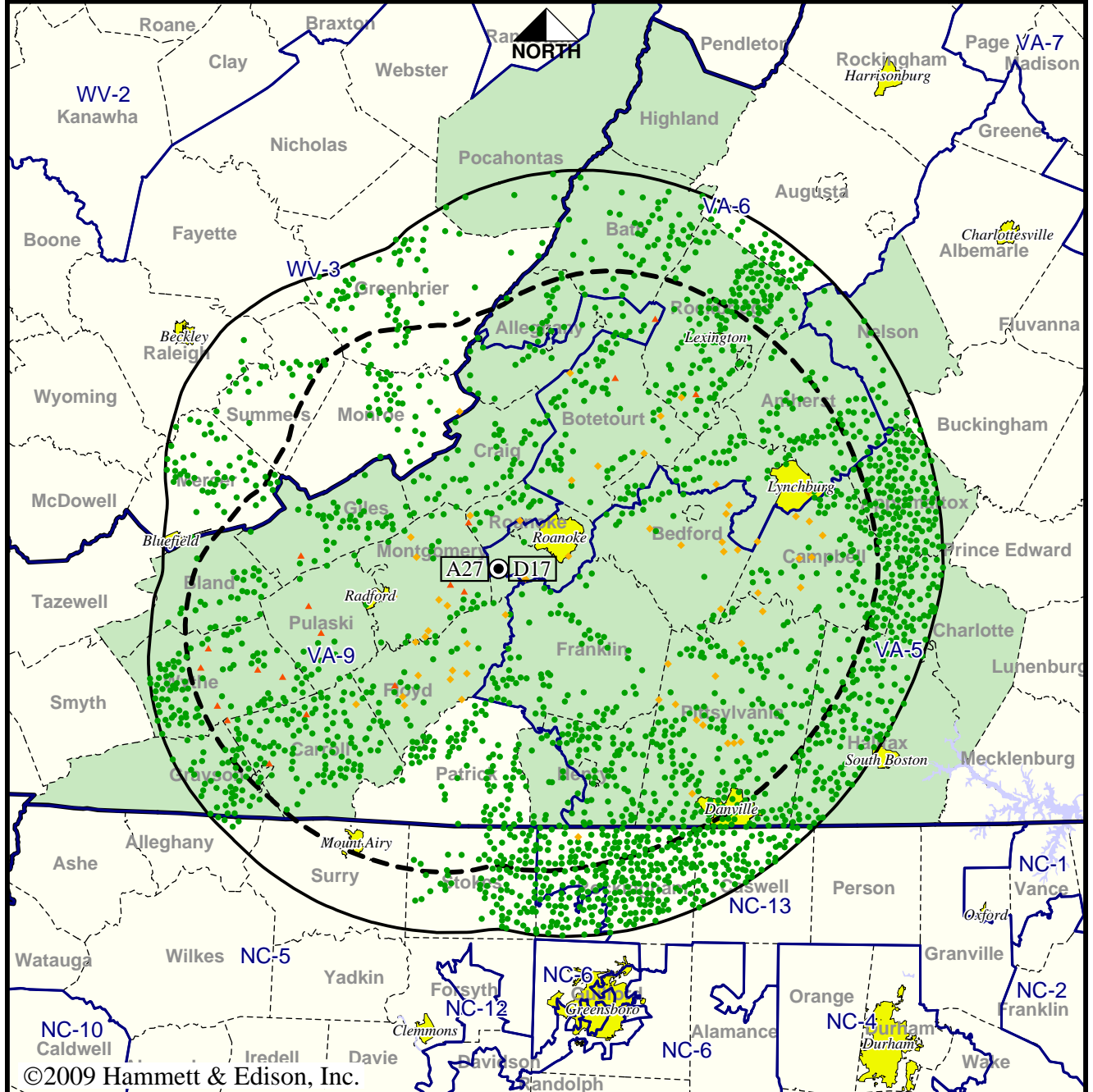
Analog service	720,918 persons
Digital service	994,366
Analog loss	29,877
Digital gain	303,325
Net gain	273,448

**Station WFXR-TV • Analog Channel 27, DTV Channel 17 • Roanoke, VA**

**Approved Post-Transition Operation: Granted Construction Permit**

**Digital CP (solid): 695 kW ERP at 594 m HAAT, Network: Fox  
vs. Analog (dashed): 2690 kW ERP at 607 m HAAT, Network: Fox**

**Market: Roanoke-Lynchburg, VA**



©2009 Hammett & Edison, Inc.

- Coverage gained after DTV transition
- No symbol = no change in coverage
- ◆ Coverage lost but still served by same network
- ▲ Coverage lost and no other service by same network

Analog service	720,918 persons
Digital service	1,034,890
Analog loss	27,237
Digital gain	341,209
Net gain	313,972

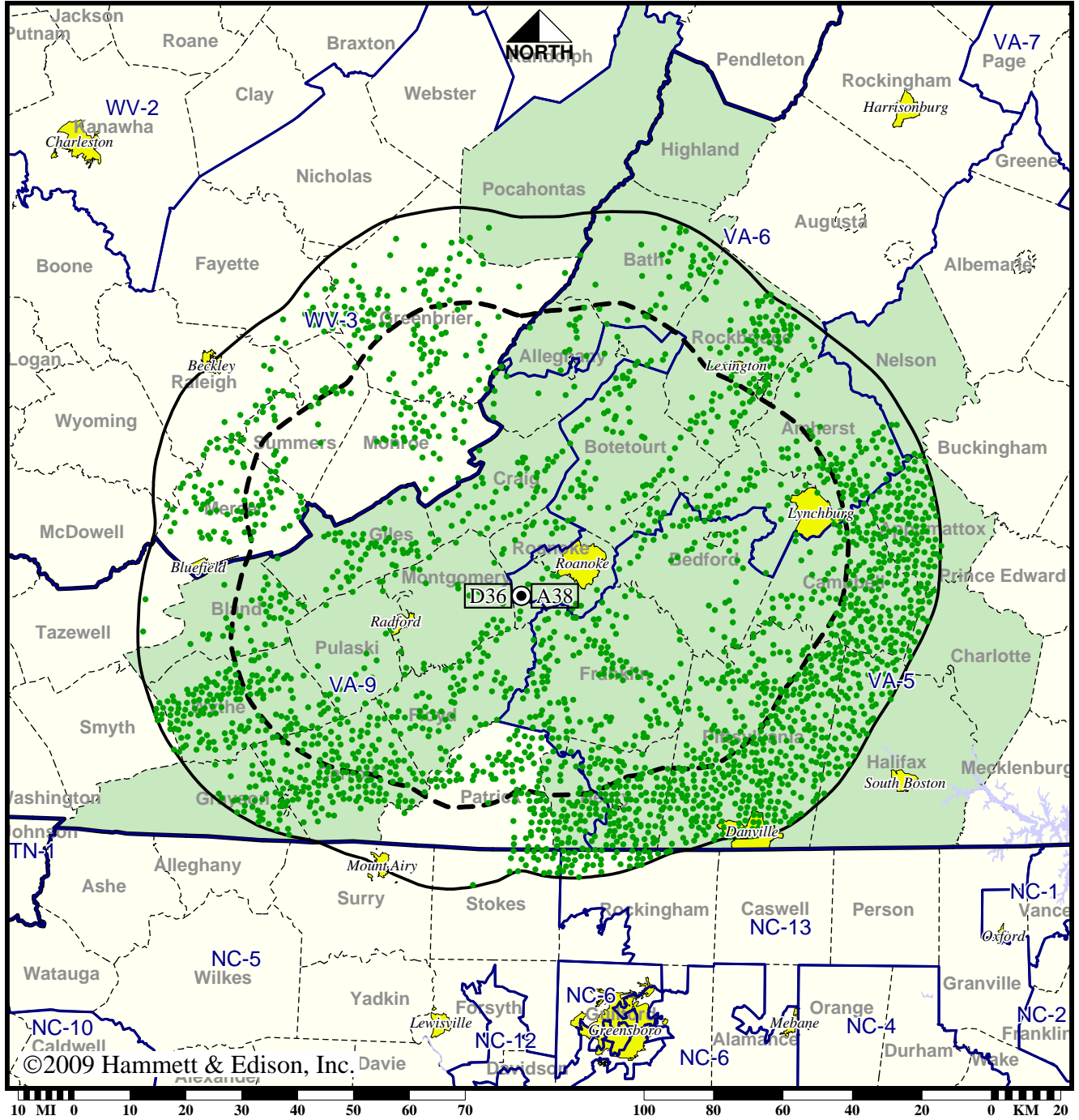


TV Station WPXR • Analog Channel 38, DTV Channel 36 • Roanoke, VA

Expected Operation on June 13: Licensed

Digital License (solid): 700 kW ERP at 623 m HAAT  
 vs. Analog (dashed): 1350 kW ERP at 623 m HAAT

Market: Roanoke-Lynchburg, VA



● Coverage gained after DTV transition  
 No symbol = no change in coverage

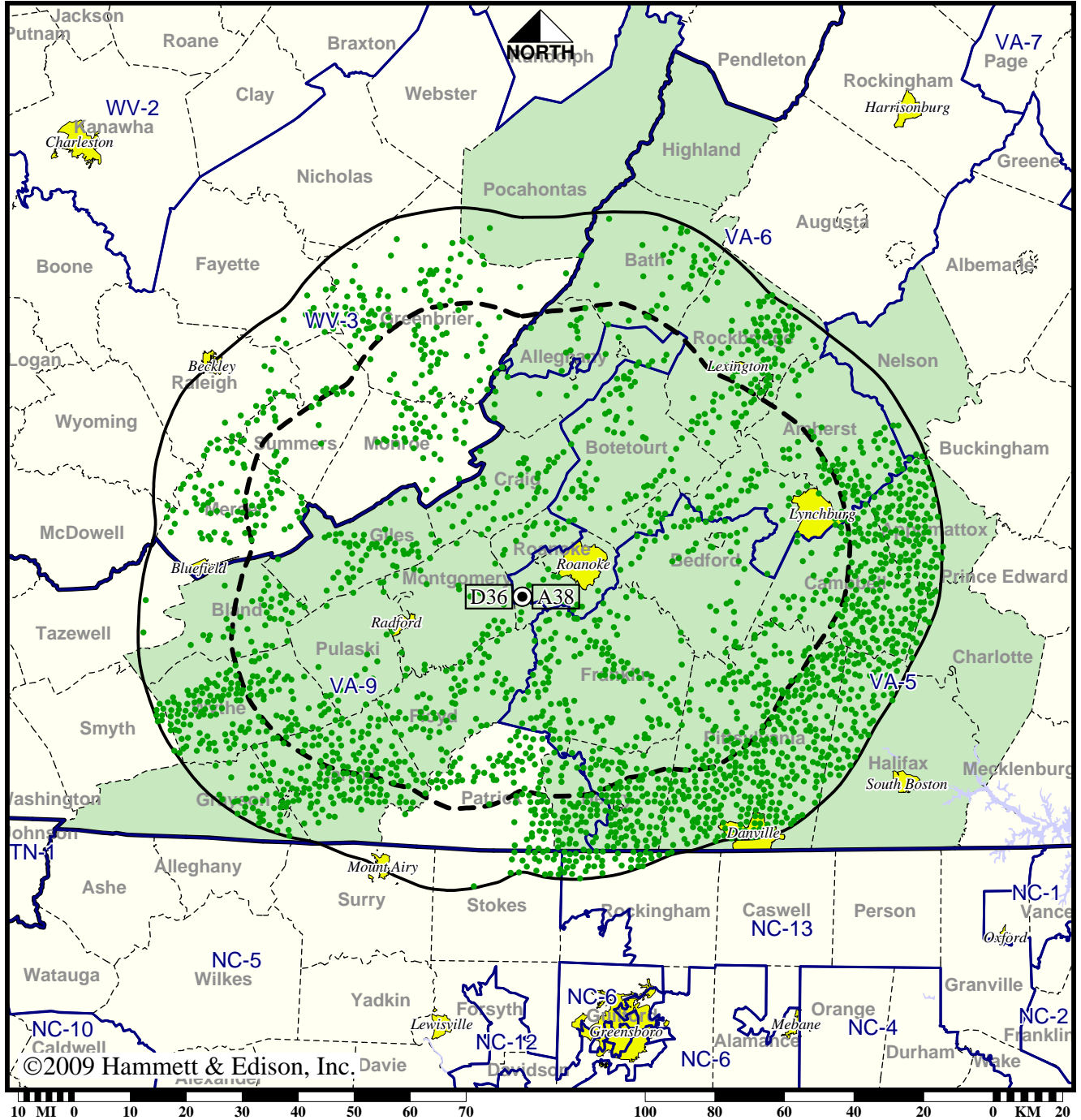
Analog service	571,840 persons
Digital service	951,048
Analog loss	0
Digital gain	379,208
Net gain	379,208

TV Station WPXR • Analog Channel 38, DTV Channel 36 • Roanoke, VA

Approved Post-Transition Operation: Licensed

Digital License (solid): 700 kW ERP at 623 m HAAT  
 vs. Analog (dashed): 1350 kW ERP at 623 m HAAT

Market: Roanoke-Lynchburg, VA



● Coverage gained after DTV transition  
 No symbol = no change in coverage

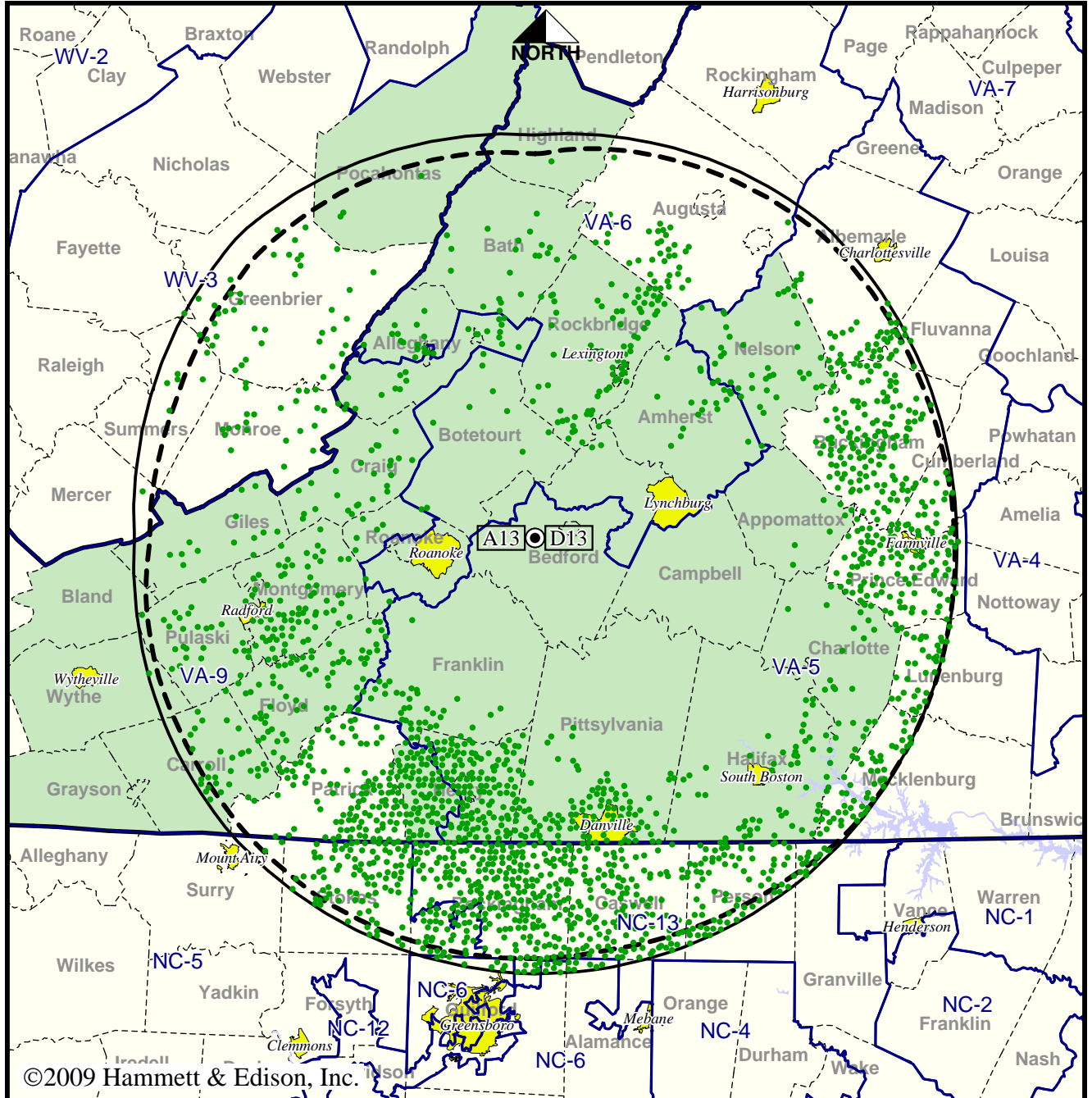
Analog service	571,840 persons
Digital service	946,030
Analog loss	0
Digital gain	374,190
Net gain	374,190

**Station WSET-TV • Analog Channel 13, DTV Channel 13 • Lynchburg, VA**

**Expected Operation on June 13: Granted Construction Permit**

**Digital CP (solid): 22.0 kW ERP at 625 m HAAT, Network: ABC  
vs. Analog (dashed): 302 kW ERP at 625 m HAAT, Network: ABC**

**Market: Roanoke-Lynchburg, VA**



©2009 Hammett & Edison, Inc.

10 MI 0 10 20 30 40 50 60 70 100 80 60 40 20 0 KM 20

● Coverage gained after DTV transition  
No symbol = no change in coverage

Analog service	731,578 persons
Digital service	1,124,722
Analog loss	0
Digital gain	393,144
Net gain	393,144

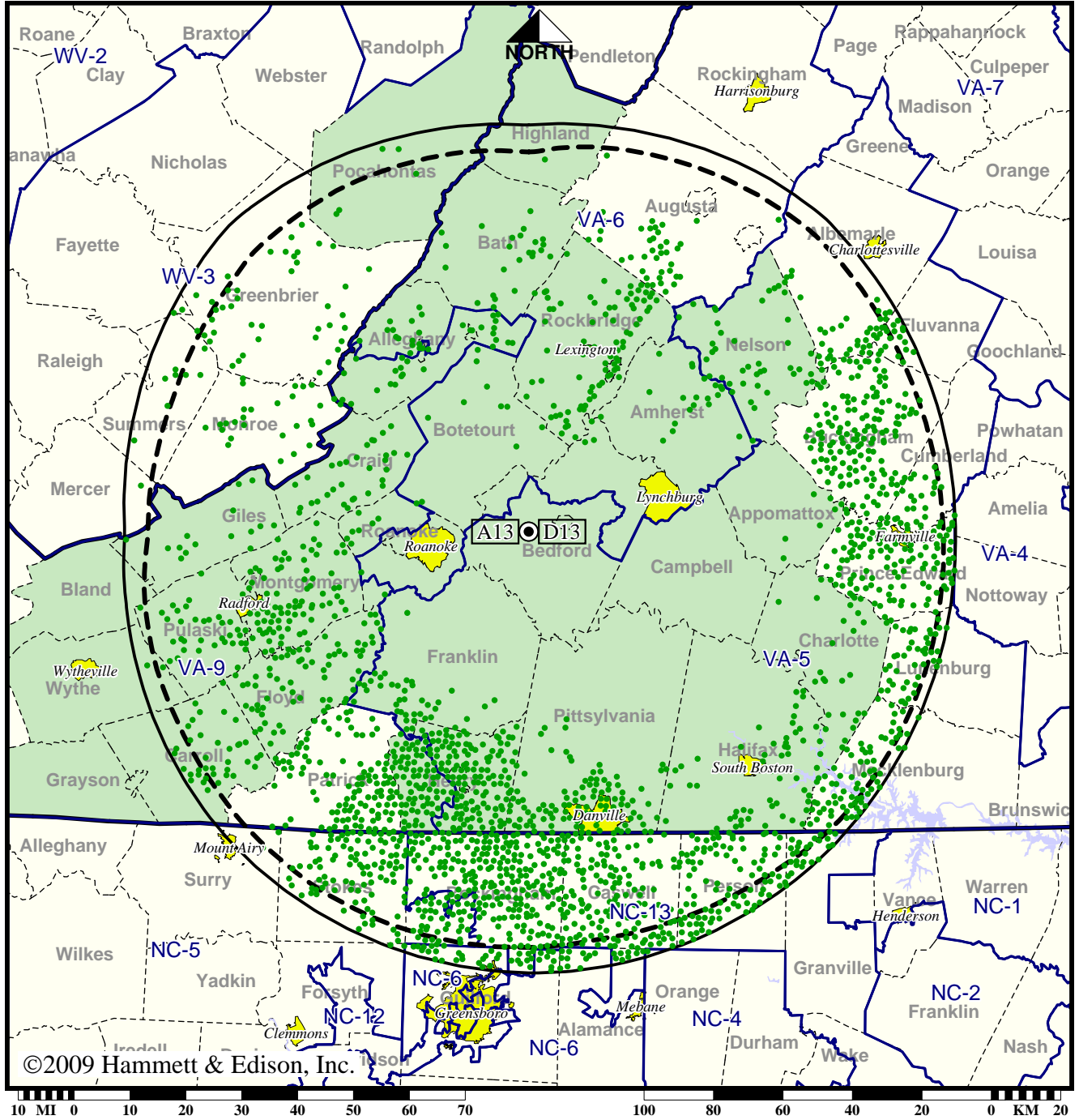


Station WSET-TV • Analog Channel 13, DTV Channel 13 • Lynchburg, VA

Approved Post-Transition Operation: Granted Construction Permit

Digital CP (solid): 28.7 kW ERP at 625 m HAAT, Network: ABC  
 vs. Analog (dashed): 302 kW ERP at 625 m HAAT, Network: ABC

Market: Roanoke-Lynchburg, VA



©2009 Hammett & Edison, Inc.

● Coverage gained after DTV transition  
 No symbol = no change in coverage

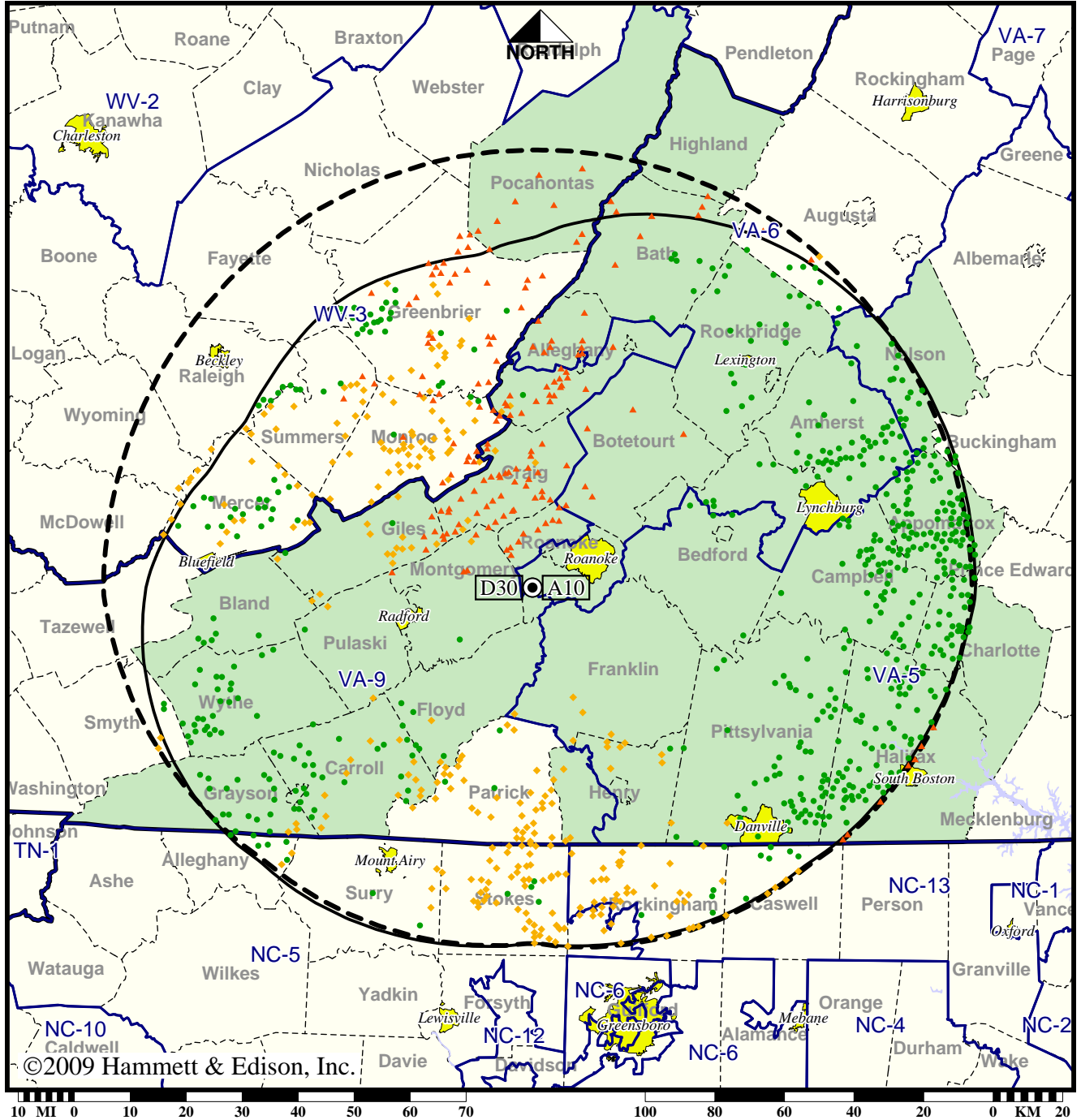
Analog service	731,578 persons
Digital service	1,145,319
Analog loss	0
Digital gain	413,741
Net gain	413,741

Station WSLs-TV • Analog Channel 10, DTV Channel 30 • Roanoke, VA

Expected Operation on June 13: Appendix B Facility

Digital Appendix B (solid): 950 kW ERP at 592 m HAAT, Network: NBC  
 vs. Analog (dashed): 316 kW ERP at 610 m HAAT, Network: NBC

Market: Roanoke-Lynchburg, VA



©2009 Hammett & Edison, Inc.

- Coverage gained after DTV transition
- No symbol = no change in coverage
- ◆ Coverage lost but still served by same network
- ▲ Coverage lost and no other service by same network

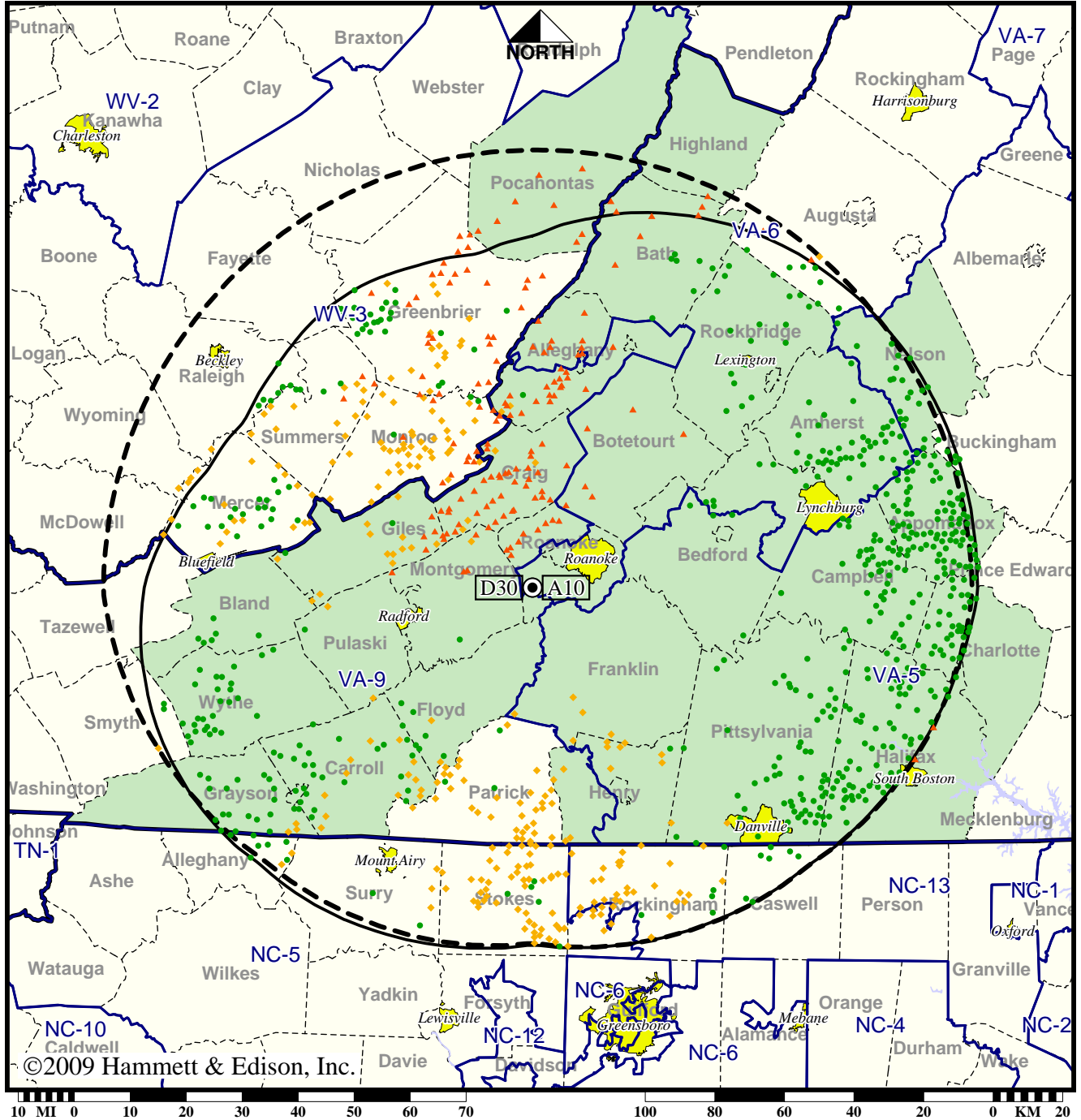
Analog service	1,043,694 persons
Digital service	1,058,443
Analog loss	52,392
Digital gain	67,141
Net gain	14,749

Station WSLN-TV • Analog Channel 10, DTV Channel 30 • Roanoke, VA

Approved Post-Transition Operation: Granted Construction Permit

Digital CP (solid): 1000 kW ERP at 592 m HAAT, Network: NBC  
 vs. Analog (dashed): 316 kW ERP at 610 m HAAT, Network: NBC

Market: Roanoke-Lynchburg, VA



©2009 Hammett & Edison, Inc.

- Coverage gained after DTV transition
- No symbol = no change in coverage
- ◆ Coverage lost but still served by same network
- ▲ Coverage lost and no other service by same network

Analog service	1,043,694 persons
Digital service	1,063,283
Analog loss	48,468
Digital gain	68,057
Net gain	19,589

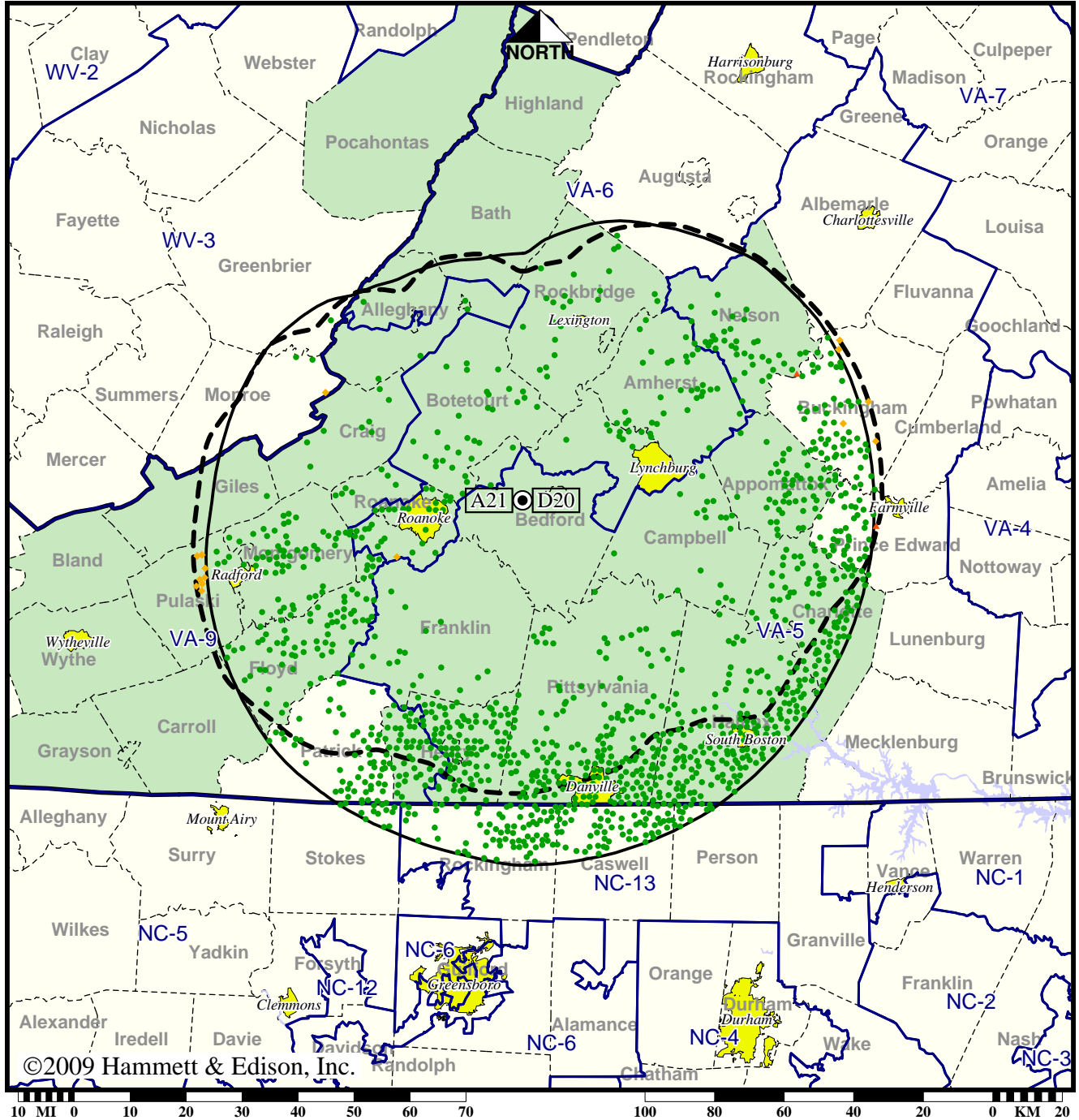


TV Station WWCW • Analog Channel 21, DTV Channel 20 • Lynchburg, VA

Expected Operation on June 13: Special Temporary Authorization

Digital STA (solid): 135 kW ERP at 500 m HAAT, Network: Fox  
 vs. Analog (dashed): 4170 kW ERP at 500 m HAAT, Network: Fox

Market: Roanoke-Lynchburg, VA



- Coverage gained after DTV transition
- No symbol = no change in coverage
- ◆ Coverage lost but still served by same network
- ▲ Coverage lost and no other service by same network

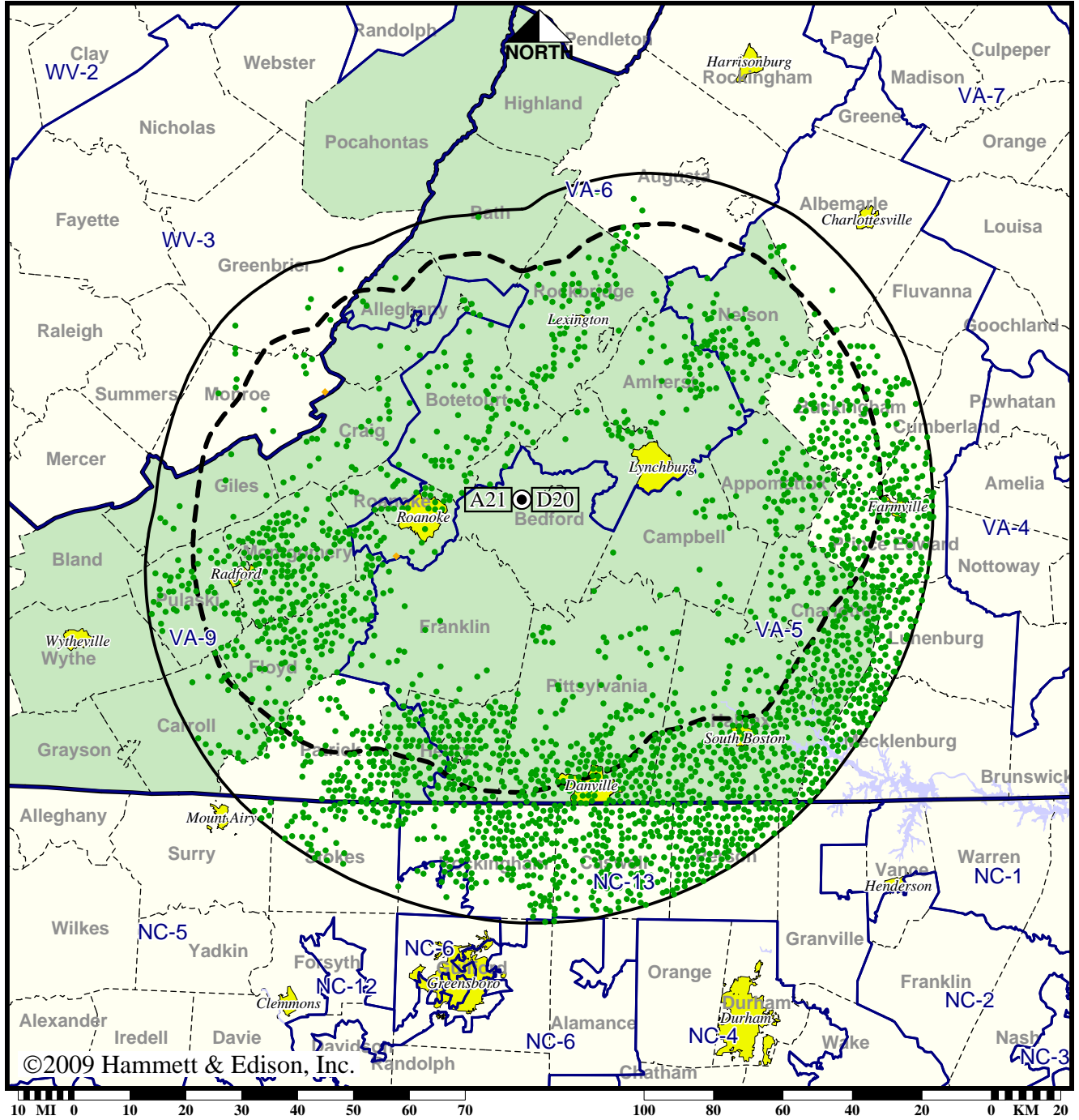
Analog service	517,477 persons
Digital service	792,071
Analog loss	7,073
Digital gain	281,667
Net gain	274,594

TV Station WWCW • Analog Channel 21, DTV Channel 20 • Lynchburg, VA

Approved Post-Transition Operation: Granted Construction Permit

Digital CP (solid): 916 kW ERP at 500 m HAAT, Network: Fox  
 vs. Analog (dashed): 4170 kW ERP at 500 m HAAT, Network: Fox

Market: Roanoke-Lynchburg, VA



- Coverage gained after DTV transition
- No symbol = no change in coverage
- ◆ Coverage lost but still served by same network

Analog service	517,477 persons
Digital service	1,008,036
Analog loss	104
Digital gain	490,663
Net gain	490,559