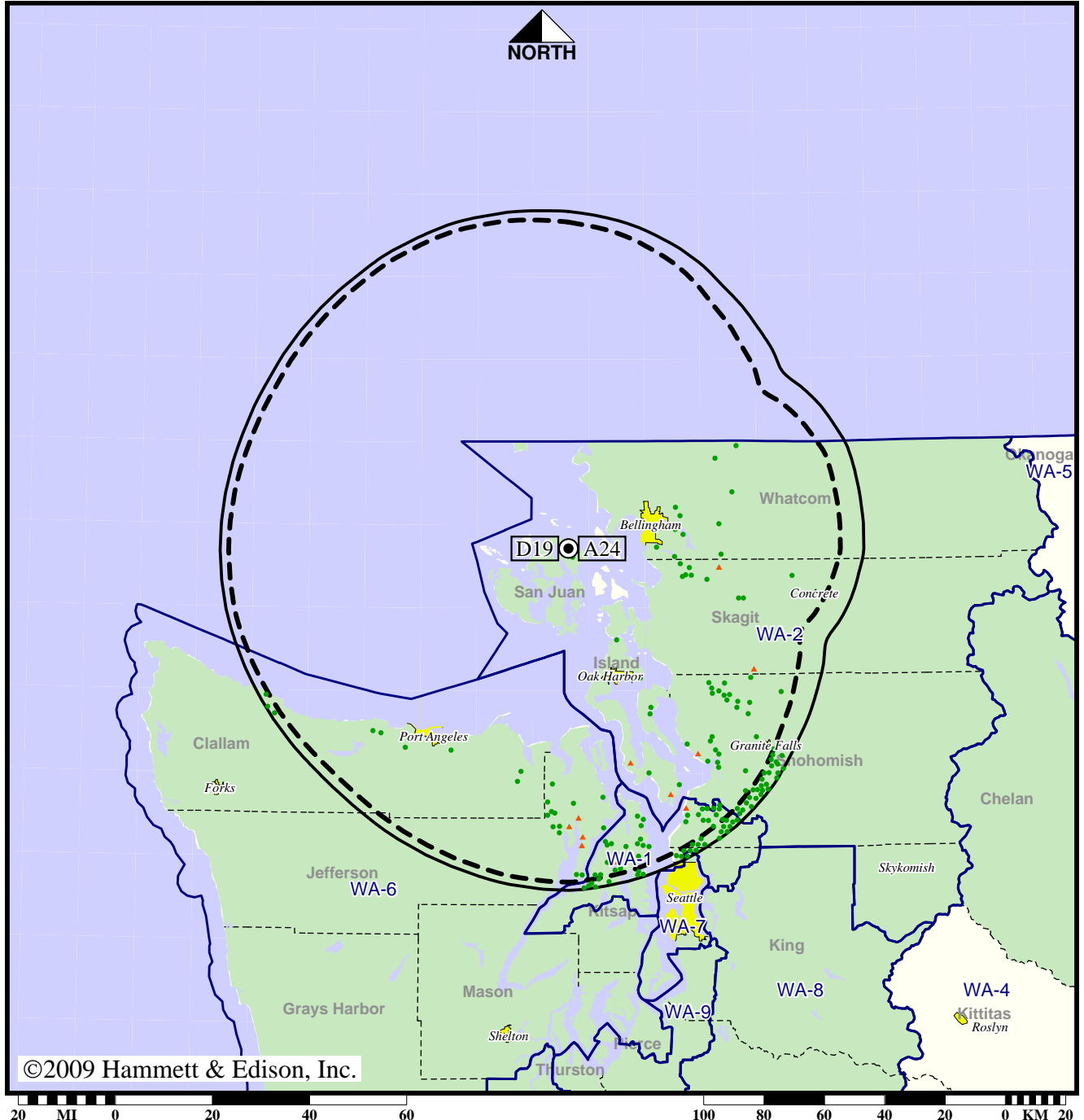


TV Station KBCB • Analog Channel 24, DTV Channel 19 • Bellingham, WA

Expected Operation on June 13: Licensed

Digital License (solid): 165 kW ERP at 757 m HAAT
 vs. Analog (dashed): 3090 kW ERP at 757 m HAAT

Market: Seattle-Tacoma, WA



©2009 Hammett & Edison, Inc.

- Coverage gained after DTV transition
- No symbol = no change in coverage
- ▲ Coverage lost after DTV transition

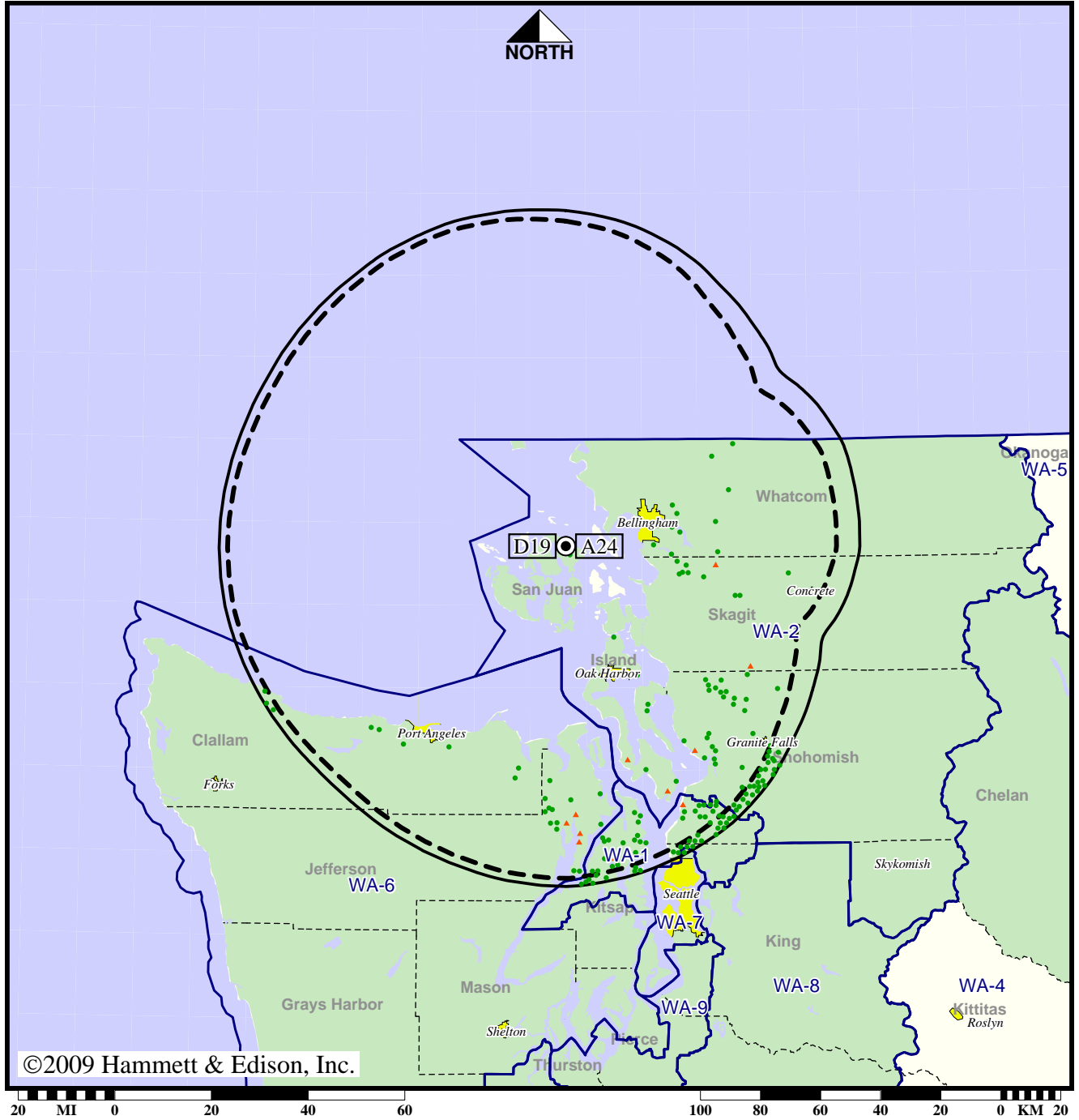
Analog service	811,450 persons
Digital service	982,967
Analog loss	4,524
Digital gain	176,041
Net gain	171,517

TV Station KBCB • Analog Channel 24, DTV Channel 19 • Bellingham, WA

Approved Post-Transition Operation: Licensed

Digital License (solid): 165 kW ERP at 757 m HAAT
 vs. Analog (dashed): 3090 kW ERP at 757 m HAAT

Market: Seattle-Tacoma, WA



©2009 Hammett & Edison, Inc.

- Coverage gained after DTV transition
- No symbol = no change in coverage
- ▲ Coverage lost after DTV transition

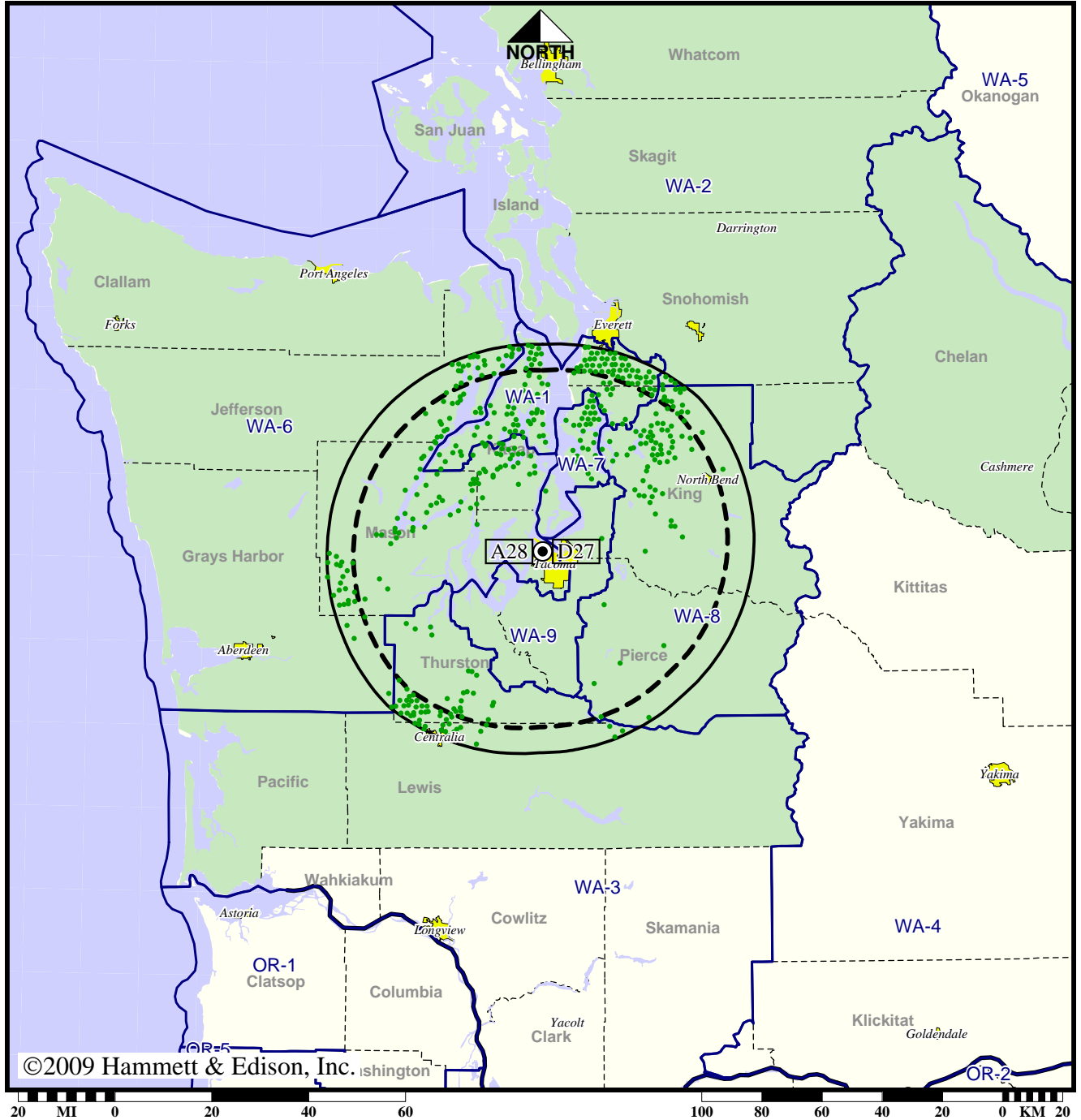
Analog service	811,450 persons
Digital service	982,967
Analog loss	4,524
Digital gain	176,041
Net gain	171,517

Station KBTC-TV • Analog Channel 28, DTV Channel 27 • Tacoma, WA

Expected Operation on June 13: Licensed

Digital License (solid): 45.0 kW ERP at 235 m HAAT, Network: PBS
 vs. Analog (dashed): 604 kW ERP at 219 m HAAT, Network: PBS

Market: Seattle-Tacoma, WA



©2009 Hammett & Edison, Inc.

● Coverage gained after DTV transition
 No symbol = no change in coverage

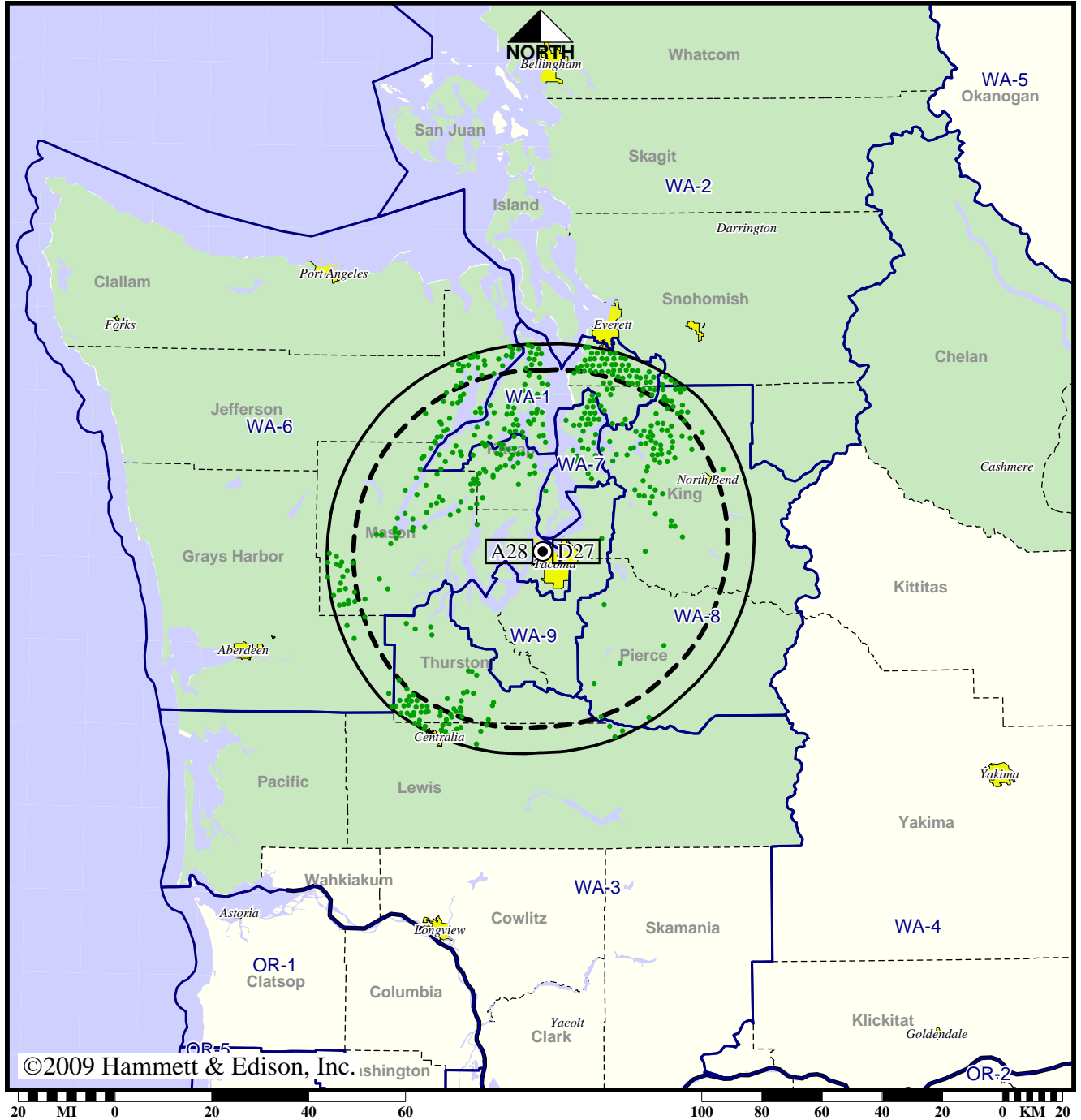
Analog service	2,471,960 persons
Digital service	3,084,419
Analog loss	0
Digital gain	612,459
Net gain	612,459

Station KBTC-TV • Analog Channel 28, DTV Channel 27 • Tacoma, WA

Approved Post-Transition Operation: Licensed

Digital License (solid): 45.0 kW ERP at 235 m HAAT, Network: PBS
 vs. Analog (dashed): 604 kW ERP at 219 m HAAT, Network: PBS

Market: Seattle-Tacoma, WA



©2009 Hammett & Edison, Inc.

● Coverage gained after DTV transition
 No symbol = no change in coverage

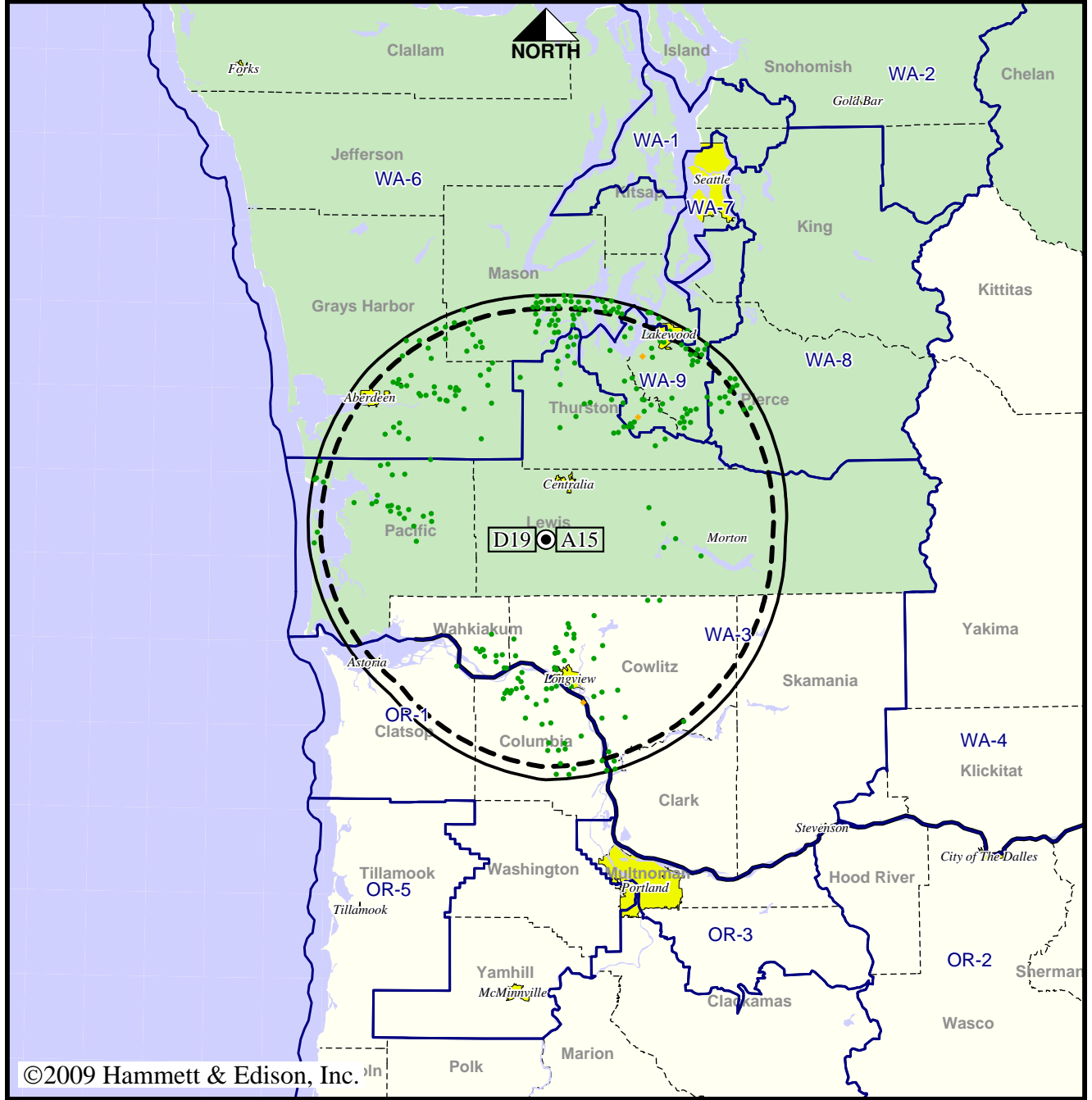
Analog service	2,471,960 persons
Digital service	3,084,419
Analog loss	0
Digital gain	612,459
Net gain	612,459

TV Station KCKA • Analog Channel 15, DTV Channel 19 • Centralia, WA

Expected Operation on June 13: Licensed

Digital License (solid): 43.7 kW ERP at 334 m HAAT, Network: PBS
 vs. Analog (dashed): 661 kW ERP at 347 m HAAT, Network: PBS

Market: Seattle-Tacoma, WA



©2009 Hammett & Edison, Inc.

- Coverage gained after DTV transition
- No symbol = no change in coverage
- ◆ Coverage lost but still served by same network

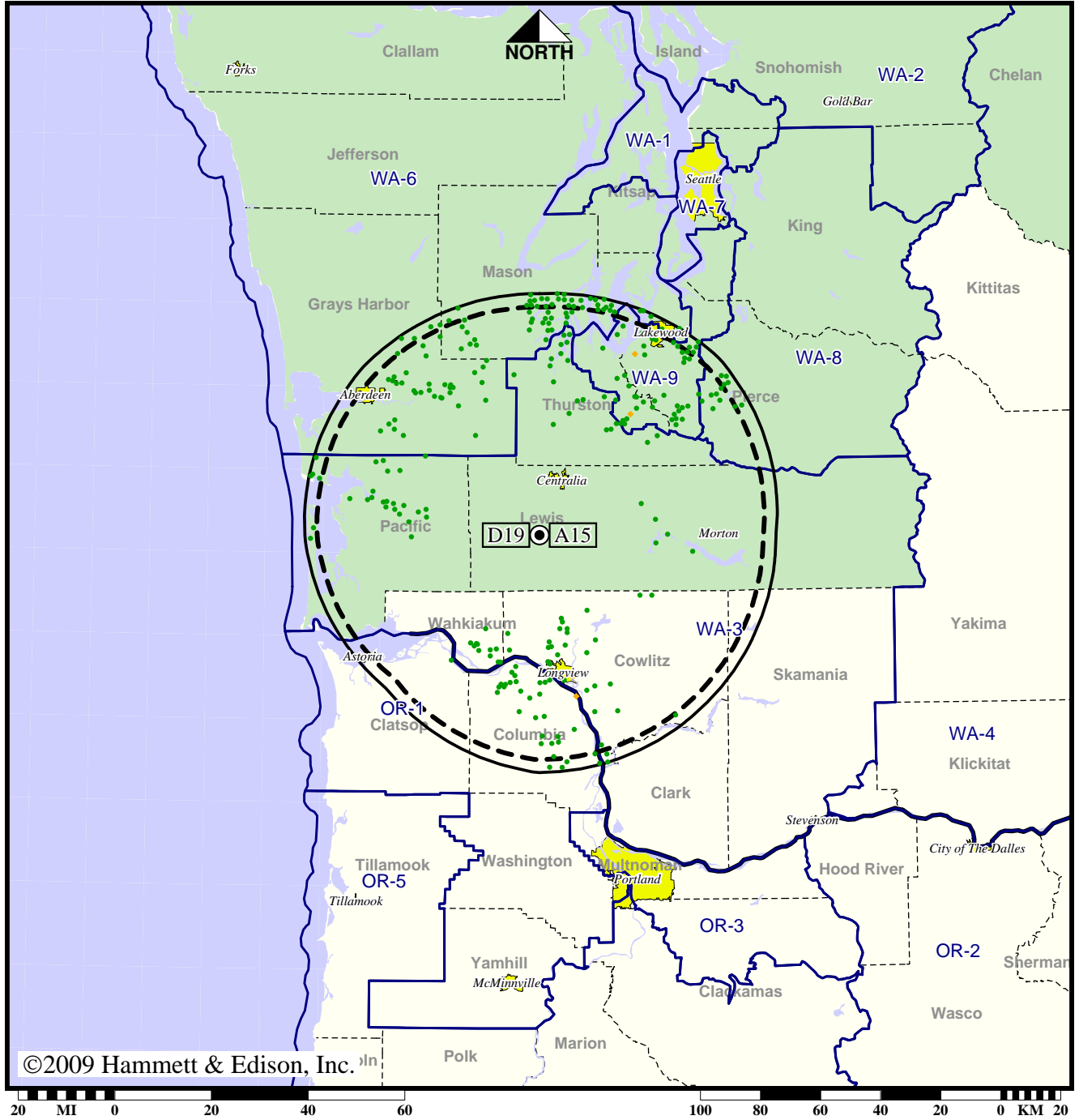
Analog service	330,842 persons
Digital service	434,918
Analog loss	4,532
Digital gain	108,608
Net gain	104,076

TV Station KCKA • Analog Channel 15, DTV Channel 19 • Centralia, WA

Approved Post-Transition Operation: Licensed

Digital License (solid): 43.7 kW ERP at 334 m HAAT, Network: PBS
 vs. Analog (dashed): 661 kW ERP at 347 m HAAT, Network: PBS

Market: Seattle-Tacoma, WA



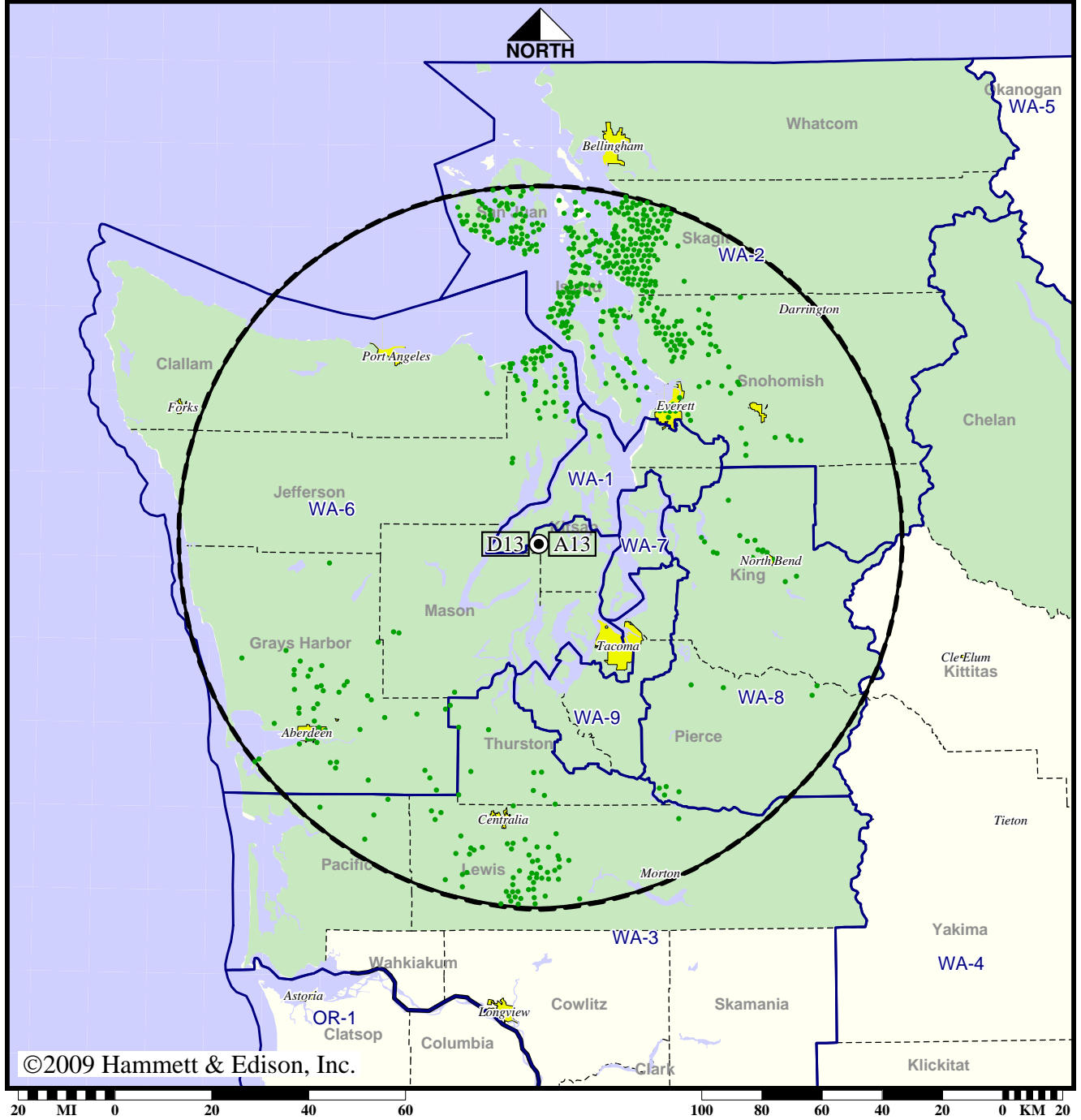
Analog service	330,842 persons
Digital service	434,918
Analog loss	4,532
Digital gain	108,608
Net gain	104,076

TV Station KCPQ • Analog Channel 13, DTV Channel 13 • Tacoma, WA

Expected Operation on June 13: Granted Construction Permit

**Digital CP (solid): 22.1 kW ERP at 610 m HAAT, Network: Fox
vs. Analog (dashed): 316 kW ERP at 610 m HAAT, Network: Fox**

Market: Seattle-Tacoma, WA



©2009 Hammett & Edison, Inc.

● Coverage gained after DTV transition
No symbol = no change in coverage

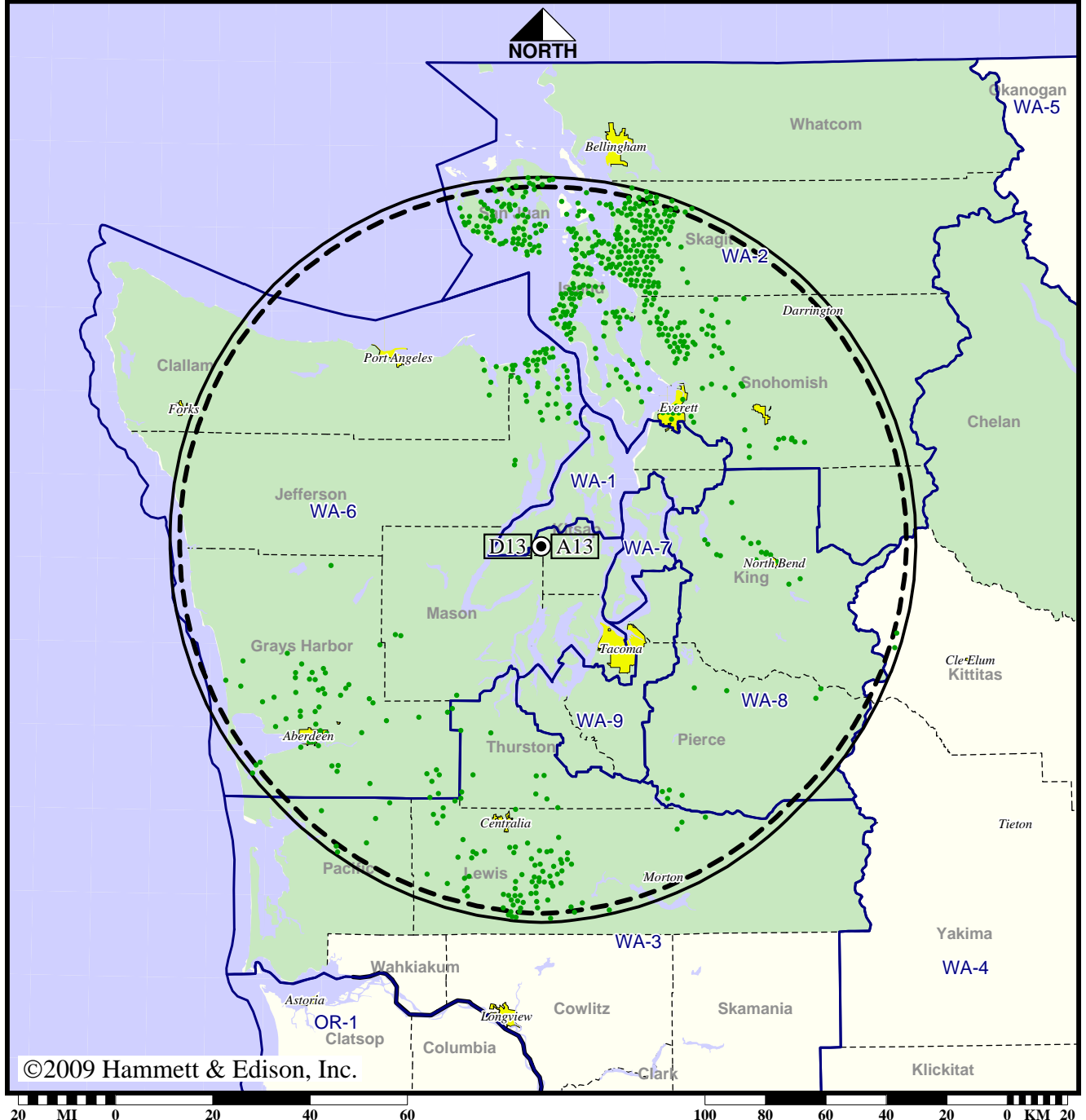
Analog service	3,527,783 persons
Digital service	3,763,521
Analog loss	0
Digital gain	235,738
Net gain	235,738

TV Station KCPQ • Analog Channel 13, DTV Channel 13 • Tacoma, WA

Approved Post-Transition Operation: Granted Construction Permit

Digital CP (solid): 30.0 kW ERP at 610 m HAAT, Network: Fox
 vs. Analog (dashed): 316 kW ERP at 610 m HAAT, Network: Fox

Market: Seattle-Tacoma, WA



©2009 Hammett & Edison, Inc.

● Coverage gained after DTV transition
 No symbol = no change in coverage

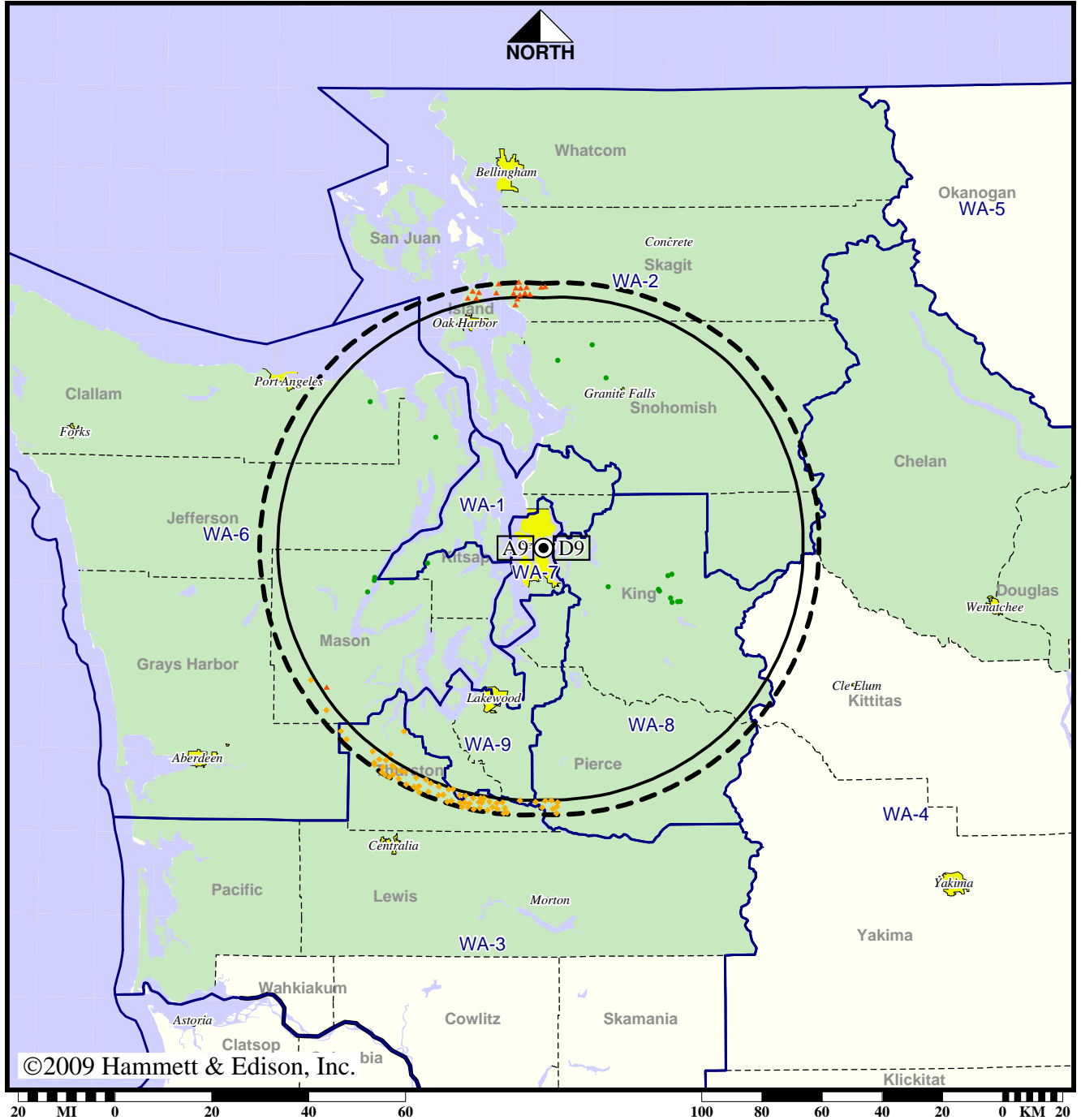
Analog service	3,527,783 persons
Digital service	3,768,799
Analog loss	0
Digital gain	241,016
Net gain	241,016

Station KCTS-TV • Analog Channel 9, DTV Channel 9 • Seattle, WA

Expected Operation on June 13: Granted Construction Permit

**Digital CP (solid): 6.35 kW ERP at 249 m HAAT, Network: PBS
vs. Analog (dashed): 316 kW ERP at 249 m HAAT, Network: PBS**

Market: Seattle-Tacoma, WA



©2009 Hammett & Edison, Inc.

- Coverage gained after DTV transition
- No symbol = no change in coverage
- ◆ Coverage lost but still served by same network
- ▲ Coverage lost and no other service by same network

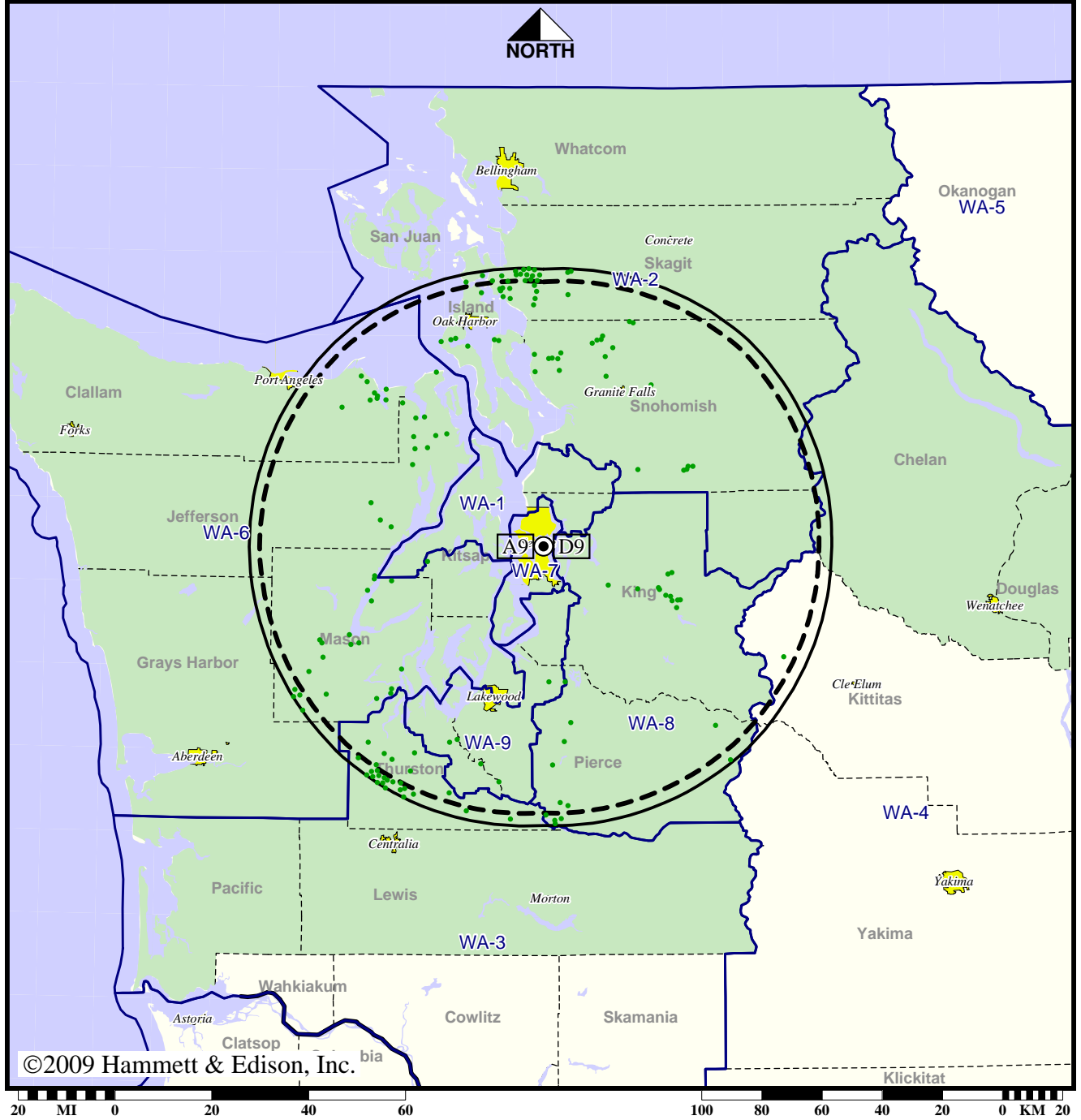
Analog service	3,562,338 persons
Digital service	3,547,974
Analog loss	20,321
Digital gain	5,957
Net gain	-14,364

Station KCTS-TV • Analog Channel 9, DTV Channel 9 • Seattle, WA

Approved Post-Transition Operation: Granted Construction Permit

Digital CP (solid): 21.7 kW ERP at 249 m HAAT, Network: PBS
 vs. Analog (dashed): 316 kW ERP at 249 m HAAT, Network: PBS

Market: Seattle-Tacoma, WA



©2009 Hammett & Edison, Inc.

- Coverage gained after DTV transition
- No symbol = no change in coverage

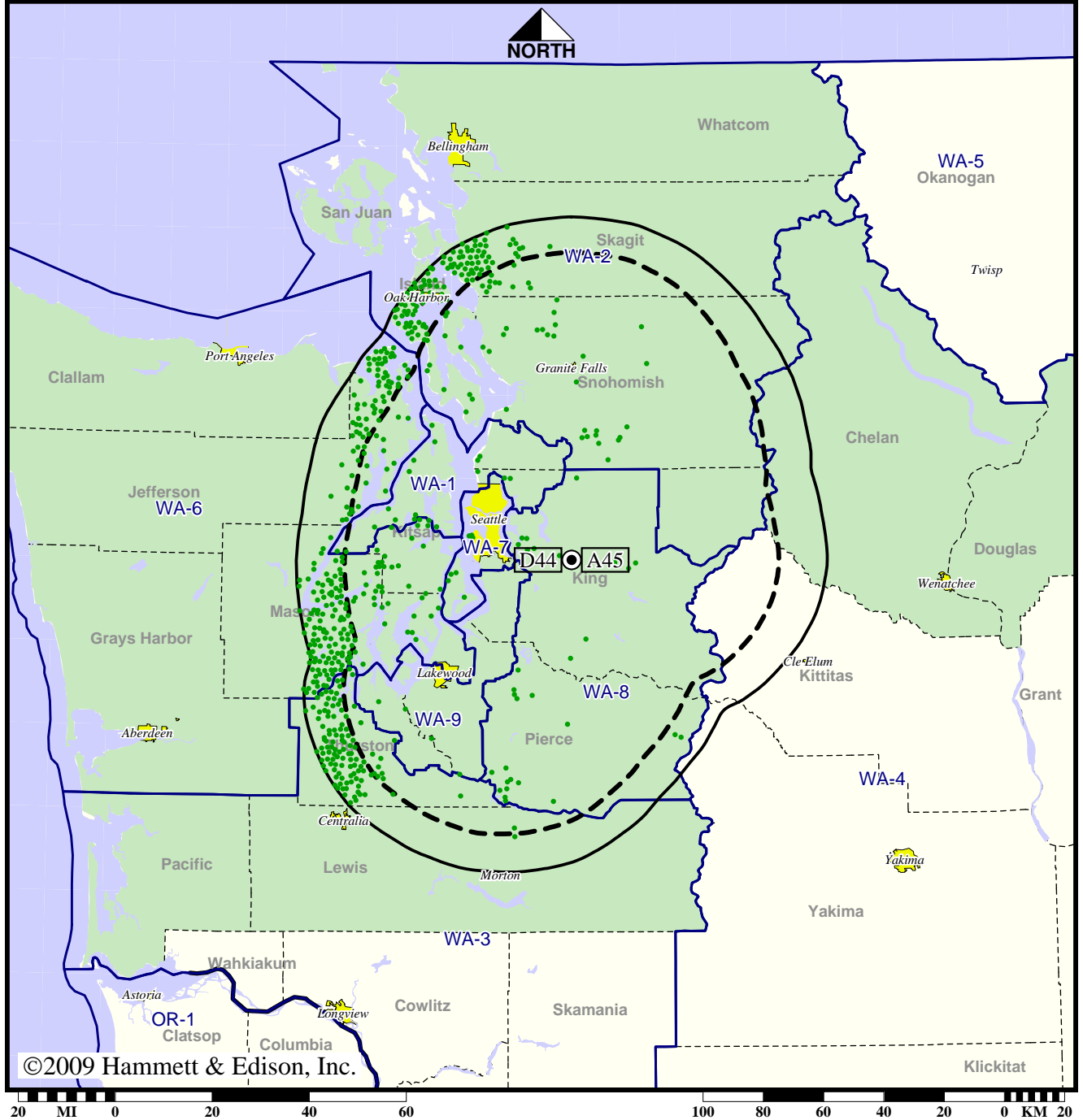
Analog service	3,562,338 persons
Digital service	3,607,949
Analog loss	0
Digital gain	45,611
Net gain	45,611

TV Station KHCV • Analog Channel 45, DTV Channel 44 • Seattle, WA

Expected Operation on June 13: Appendix B Facility

Digital Appendix B (solid): 240 kW ERP at 714 m HAAT
 vs. Analog (dashed): 2000 kW ERP at 714 m HAAT

Market: Seattle-Tacoma, WA



©2009 Hammett & Edison, Inc.

- Coverage gained after DTV transition
- No symbol = no change in coverage

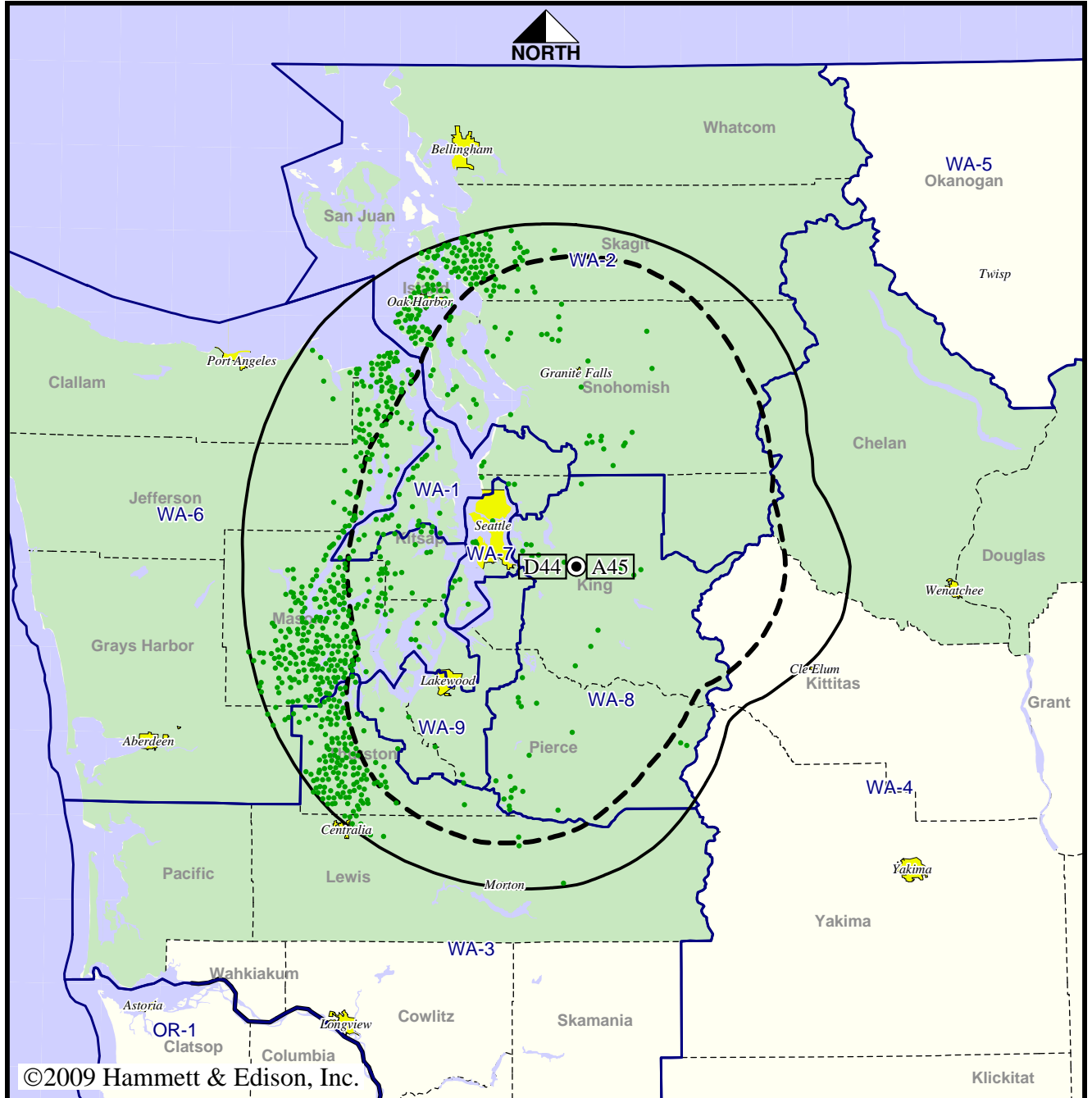
Analog service	3,345,802 persons
Digital service	3,575,884
Analog loss	0
Digital gain	230,082
Net gain	230,082

TV Station KHCV • Analog Channel 45, DTV Channel 44 • Seattle, WA

Approved Post-Transition Operation: Granted Construction Permit

Digital CP (solid): 240 kW ERP at 710 m HAAT
 vs. Analog (dashed): 2000 kW ERP at 714 m HAAT

Market: Seattle-Tacoma, WA



©2009 Hammett & Edison, Inc.

● Coverage gained after DTV transition
 No symbol = no change in coverage

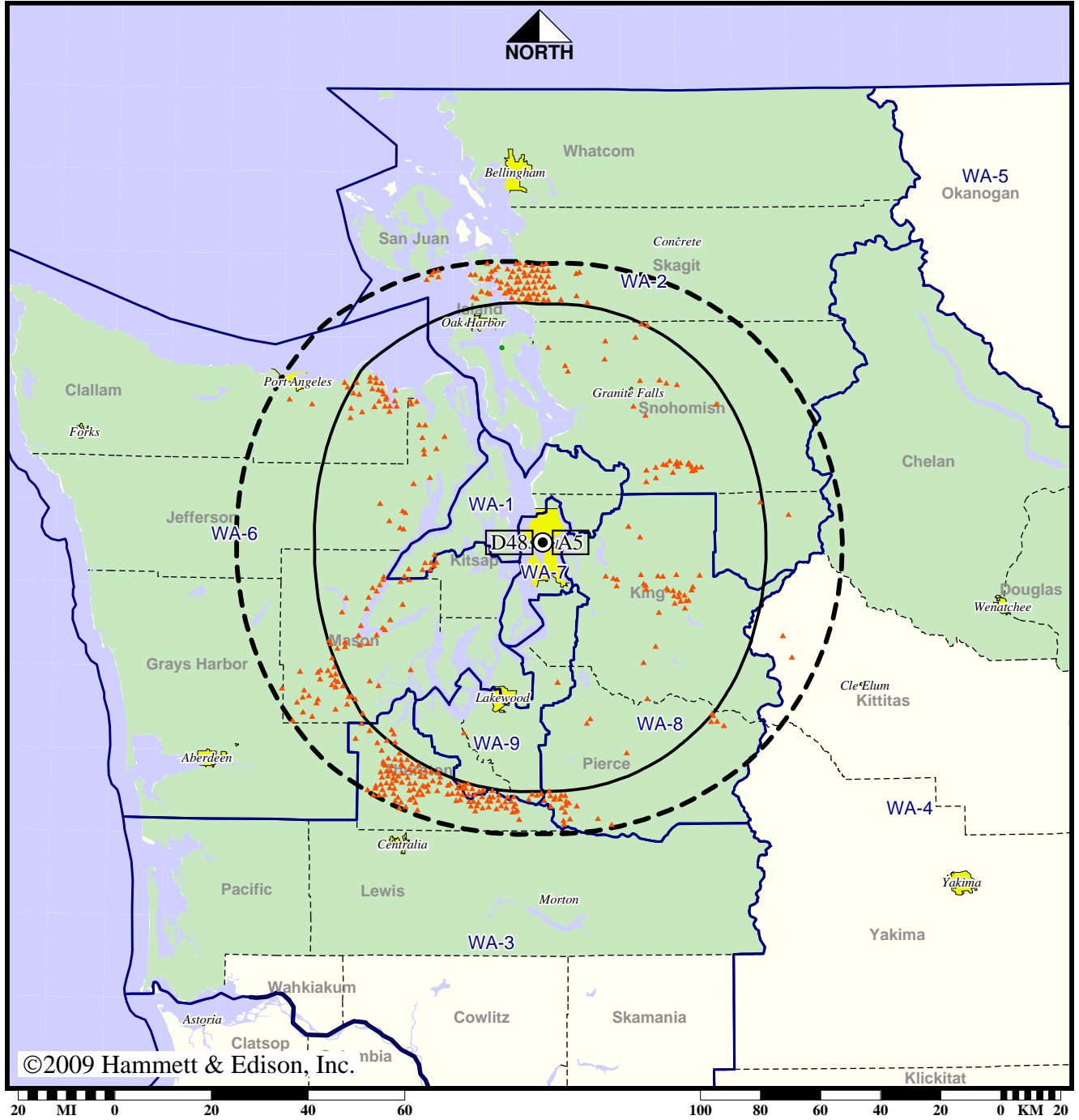
Analog service	3,345,802 persons
Digital service	3,619,761
Analog loss	0
Digital gain	273,959
Net gain	273,959

Station KING-TV • Analog Channel 5, DTV Channel 48 • Seattle, WA

Expected Operation on June 13: Licensed

Digital License (solid): 960 kW ERP at 239 m HAAT, Network: NBC
 vs. Analog (dashed): 100 kW ERP at 250 m HAAT, Network: NBC

Market: Seattle-Tacoma, WA



©2009 Hammett & Edison, Inc.

- Coverage gained after DTV transition
- No symbol = no change in coverage
- ▲ Coverage lost after DTV transition

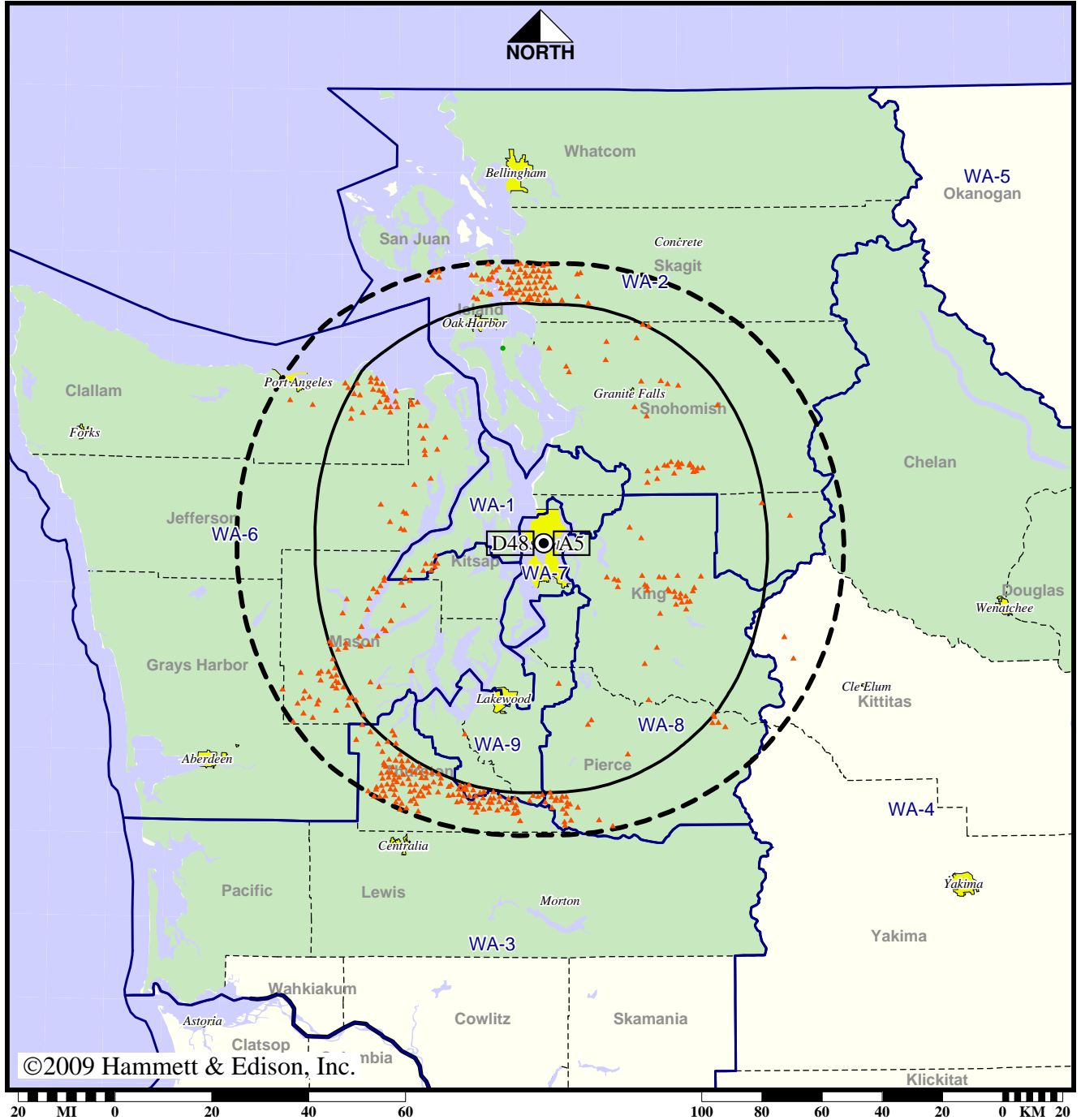
Analog service	3,628,020 persons
Digital service	3,524,307
Analog loss	104,194
Digital gain	481
Net gain	-103,713

Station KING-TV • Analog Channel 5, DTV Channel 48 • Seattle, WA

Approved Post-Transition Operation: Licensed

Digital License (solid): 960 kW ERP at 239 m HAAT, Network: NBC
 vs. Analog (dashed): 100 kW ERP at 250 m HAAT, Network: NBC

Market: Seattle-Tacoma, WA



©2009 Hammett & Edison, Inc.

- Coverage gained after DTV transition
- No symbol = no change in coverage
- ▲ Coverage lost after DTV transition

Analog service	3,628,020 persons
Digital service	3,524,307
Analog loss	104,194
Digital gain	481
Net gain	-103,713

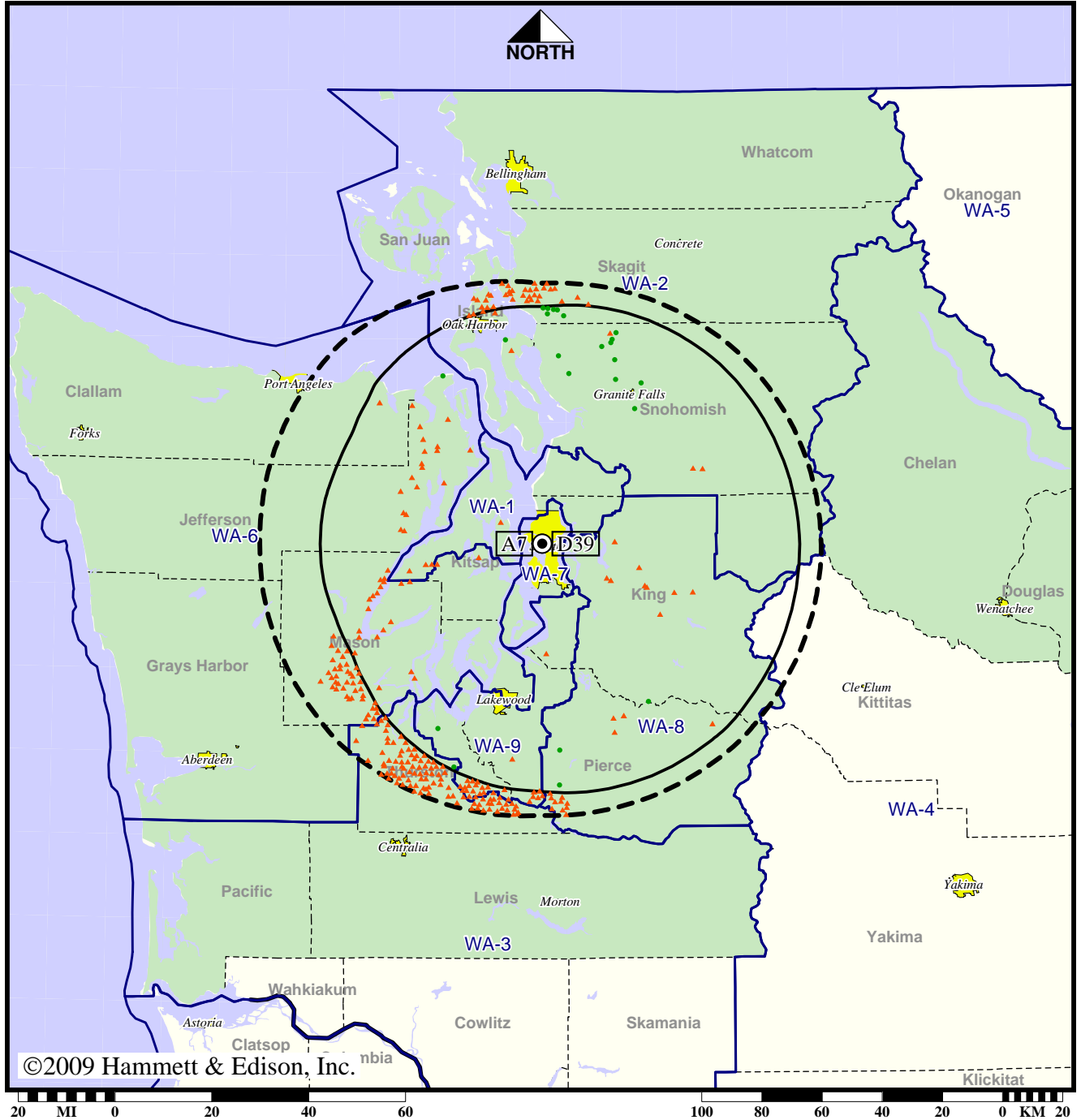
BLCDT-19981026KE
 KING-TV Digital License

Station KIRO-TV • Analog Channel 7, DTV Channel 39 • Seattle, WA

Expected Operation on June 13: Licensed

Digital License (solid): 1000 kW ERP at 230 m HAAT, Network: CBS
 vs. Analog (dashed): 316 kW ERP at 250 m HAAT, Network: CBS

Market: Seattle-Tacoma, WA



©2009 Hammett & Edison, Inc.

- Coverage gained after DTV transition
- No symbol = no change in coverage
- ▲ Coverage lost after DTV transition

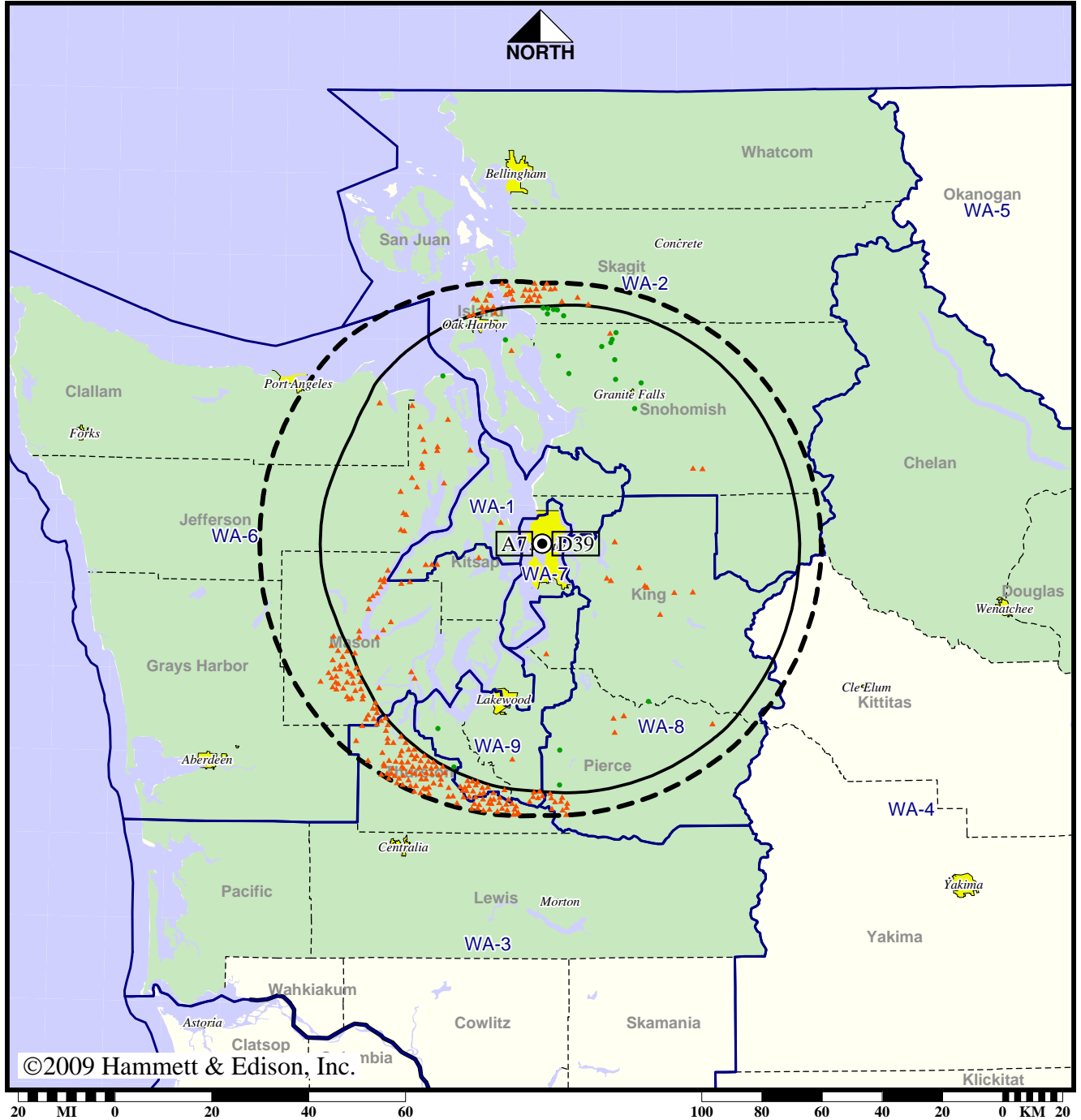
Analog service	3,574,915 persons
Digital service	3,490,615
Analog loss	87,634
Digital gain	3,334
Net gain	-84,300

Station KIRO-TV • Analog Channel 7, DTV Channel 39 • Seattle, WA

Approved Post-Transition Operation: Licensed

Digital License (solid): 1000 kW ERP at 230 m HAAT, Network: CBS
 vs. Analog (dashed): 316 kW ERP at 250 m HAAT, Network: CBS

Market: Seattle-Tacoma, WA



©2009 Hammett & Edison, Inc.

- Coverage gained after DTV transition
- No symbol = no change in coverage
- ▲ Coverage lost after DTV transition

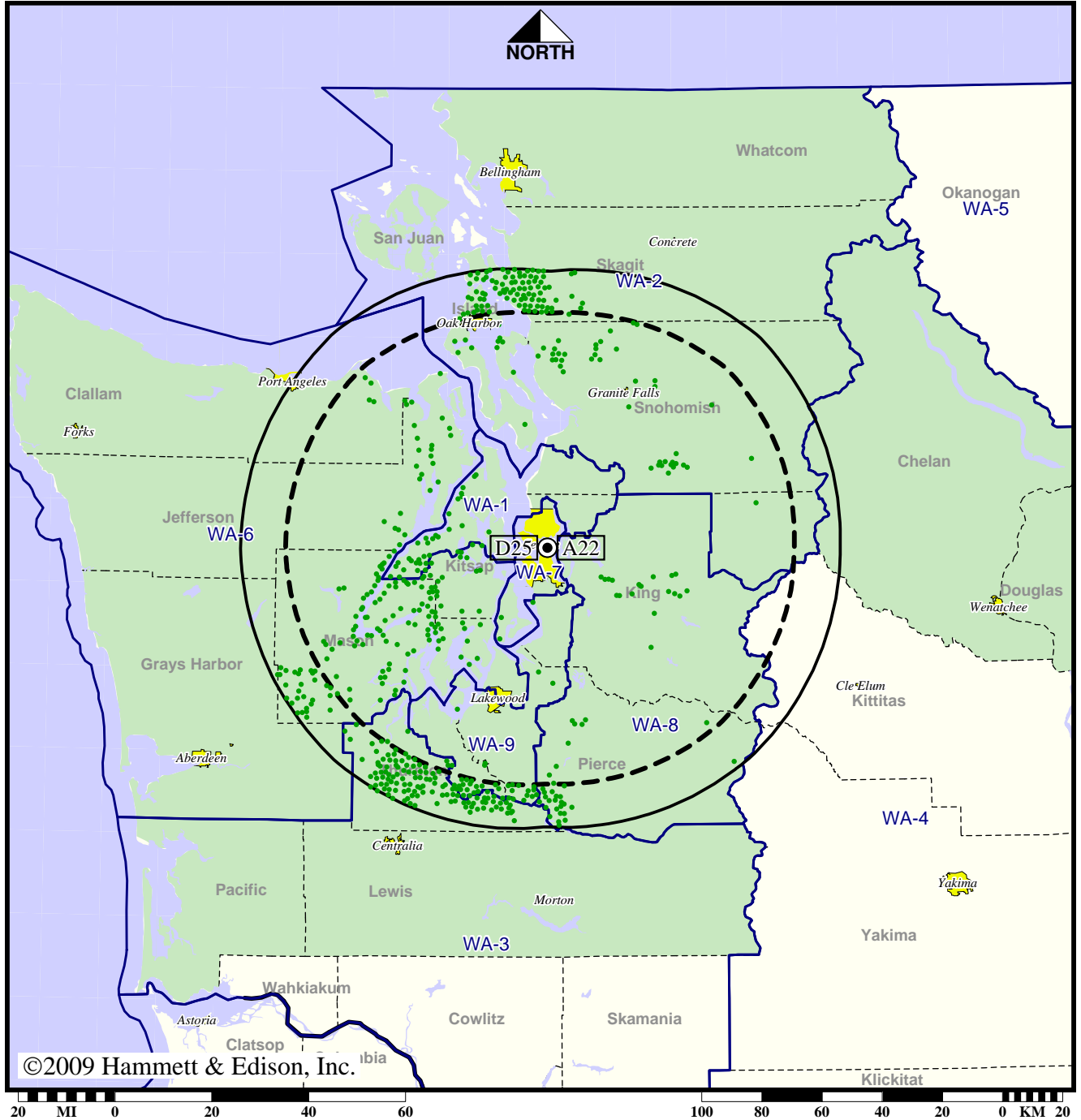
Analog service	3,574,915 persons
Digital service	3,490,615
Analog loss	87,634
Digital gain	3,334
Net gain	-84,300

TV Station KMYQ • Analog Channel 22, DTV Channel 25 • Seattle, WA

Expected Operation on June 13: Granted Construction Permit

Digital CP (solid): 1000 kW ERP at 290 m HAAT
 vs. Analog (dashed): 5000 kW ERP at 271 m HAAT

Market: Seattle-Tacoma, WA



©2009 Hammett & Edison, Inc.

- Coverage gained after DTV transition
- No symbol = no change in coverage

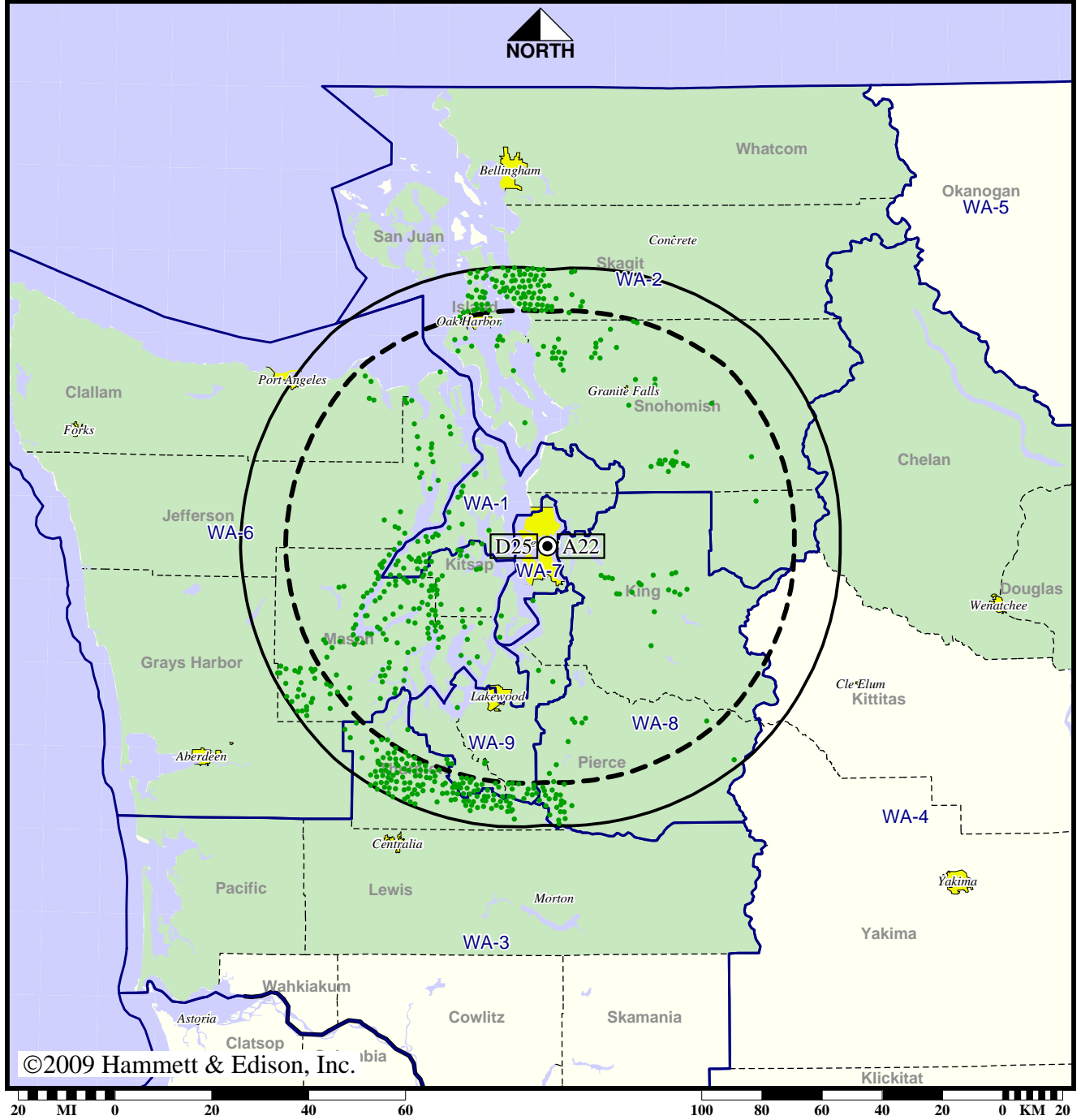
Analog service	3,466,536 persons
Digital service	3,616,286
Analog loss	0
Digital gain	149,750
Net gain	149,750

TV Station KMYQ • Analog Channel 22, DTV Channel 25 • Seattle, WA

Approved Post-Transition Operation: Granted Construction Permit

Digital CP (solid): 1000 kW ERP at 290 m HAAT
 vs. Analog (dashed): 5000 kW ERP at 271 m HAAT

Market: Seattle-Tacoma, WA



©2009 Hammett & Edison, Inc.

● Coverage gained after DTV transition
 No symbol = no change in coverage

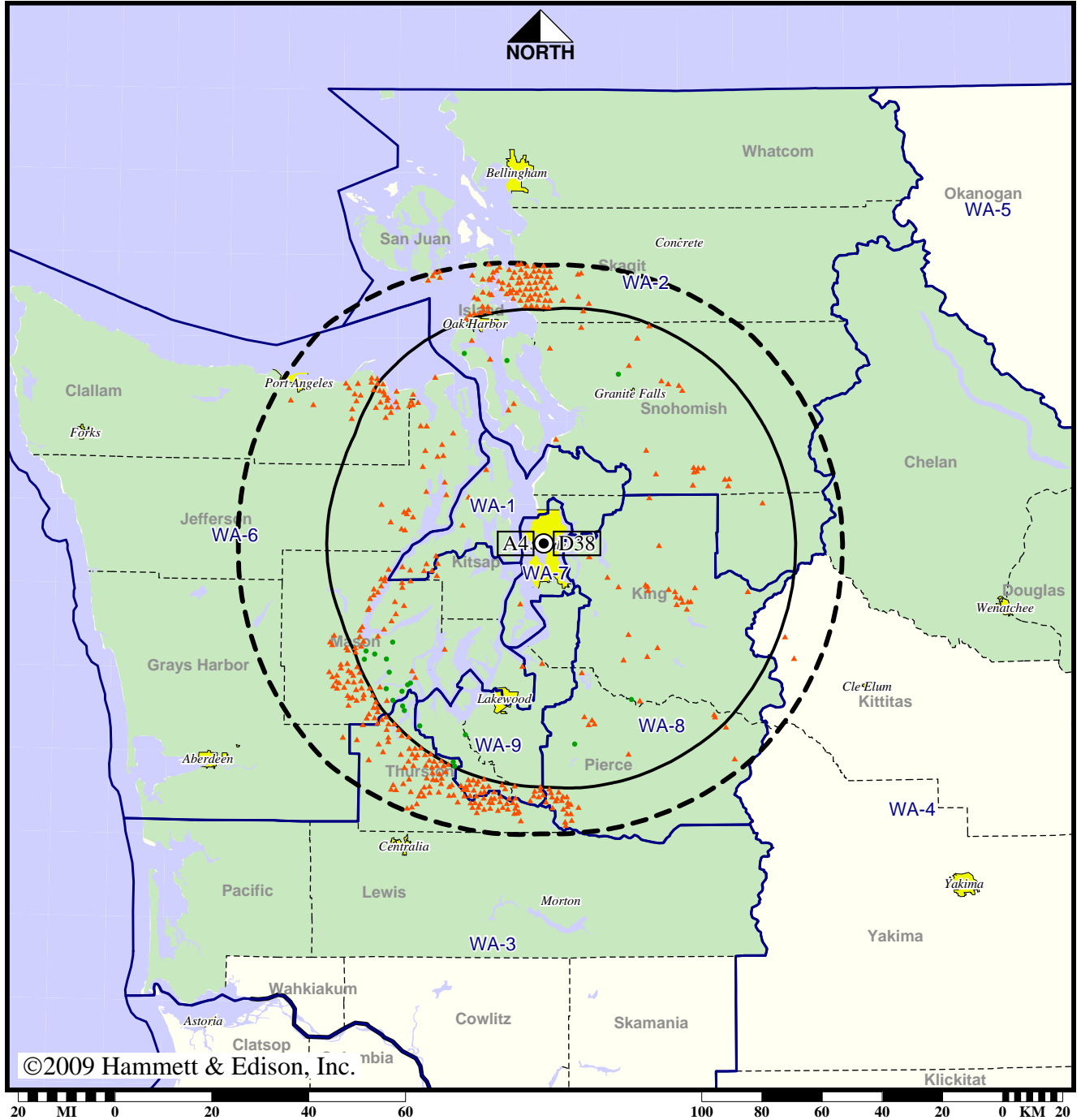
Analog service	3,466,536 persons
Digital service	3,616,286
Analog loss	0
Digital gain	149,750
Net gain	149,750

Station KOMO-TV • Analog Channel 4, DTV Channel 38 • Seattle, WA

Expected Operation on June 13: Licensed

Digital License (solid): 810 kW ERP at 223 m HAAT, Network: ABC
 vs. Analog (dashed): 100 kW ERP at 247 m HAAT, Network: ABC

Market: Seattle-Tacoma, WA



©2009 Hammett & Edison, Inc.

- Coverage gained after DTV transition
- No symbol = no change in coverage
- ▲ Coverage lost after DTV transition

Analog service	3,596,501 persons
Digital service	3,478,858
Analog loss	122,009
Digital gain	4,366
Net gain	-117,643

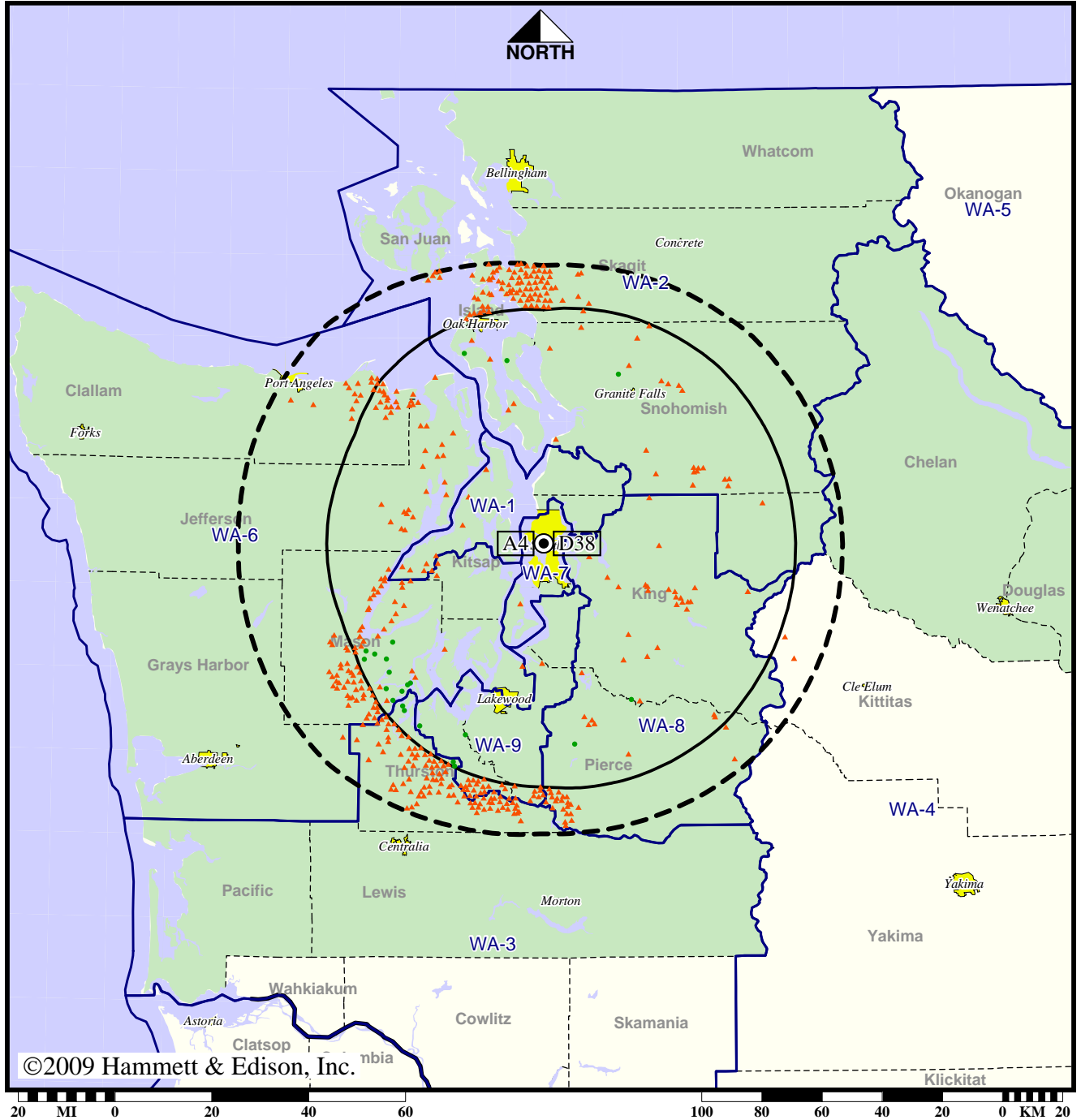
BLCDDT-19991221AAQ
 KOMO-TV Digital License

Station KOMO-TV • Analog Channel 4, DTV Channel 38 • Seattle, WA

Approved Post-Transition Operation: Licensed

Digital License (solid): 810 kW ERP at 223 m HAAT, Network: ABC
 vs. Analog (dashed): 100 kW ERP at 247 m HAAT, Network: ABC

Market: Seattle-Tacoma, WA



©2009 Hammett & Edison, Inc.

- Coverage gained after DTV transition
- No symbol = no change in coverage
- ▲ Coverage lost after DTV transition

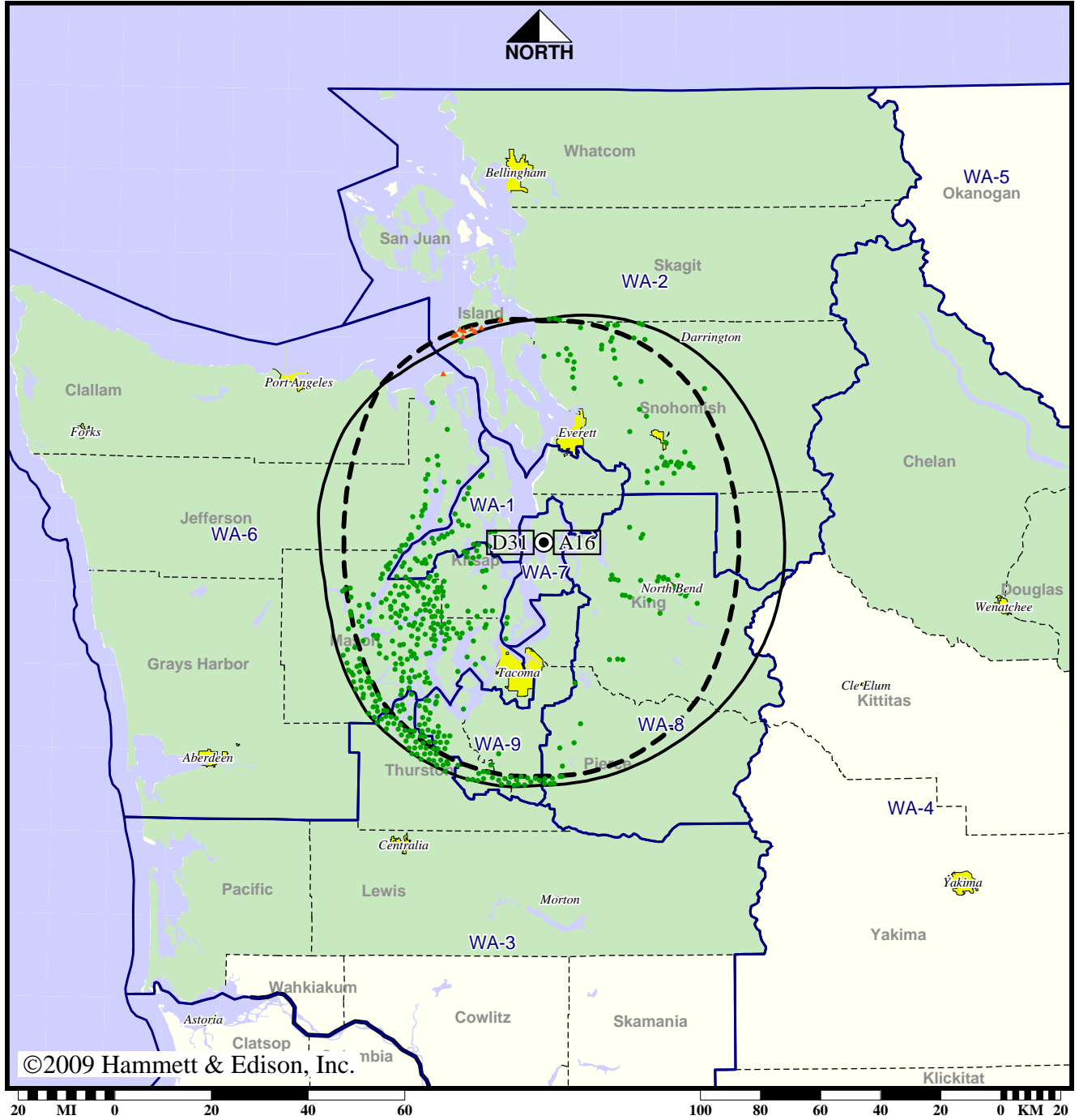
Analog service	3,596,501 persons
Digital service	3,478,858
Analog loss	122,009
Digital gain	4,366
Net gain	-117,643

Station KONG-TV • Analog Channel 16, DTV Channel 31 • Everett, WA

Expected Operation on June 13: Licensed

Digital License (solid): 700 kW ERP at 218 m HAAT
 vs. Analog (dashed): 5000 kW ERP at 239 m HAAT

Market: Seattle-Tacoma, WA



©2009 Hammett & Edison, Inc.

- Coverage gained after DTV transition
- No symbol = no change in coverage
- ▲ Coverage lost after DTV transition

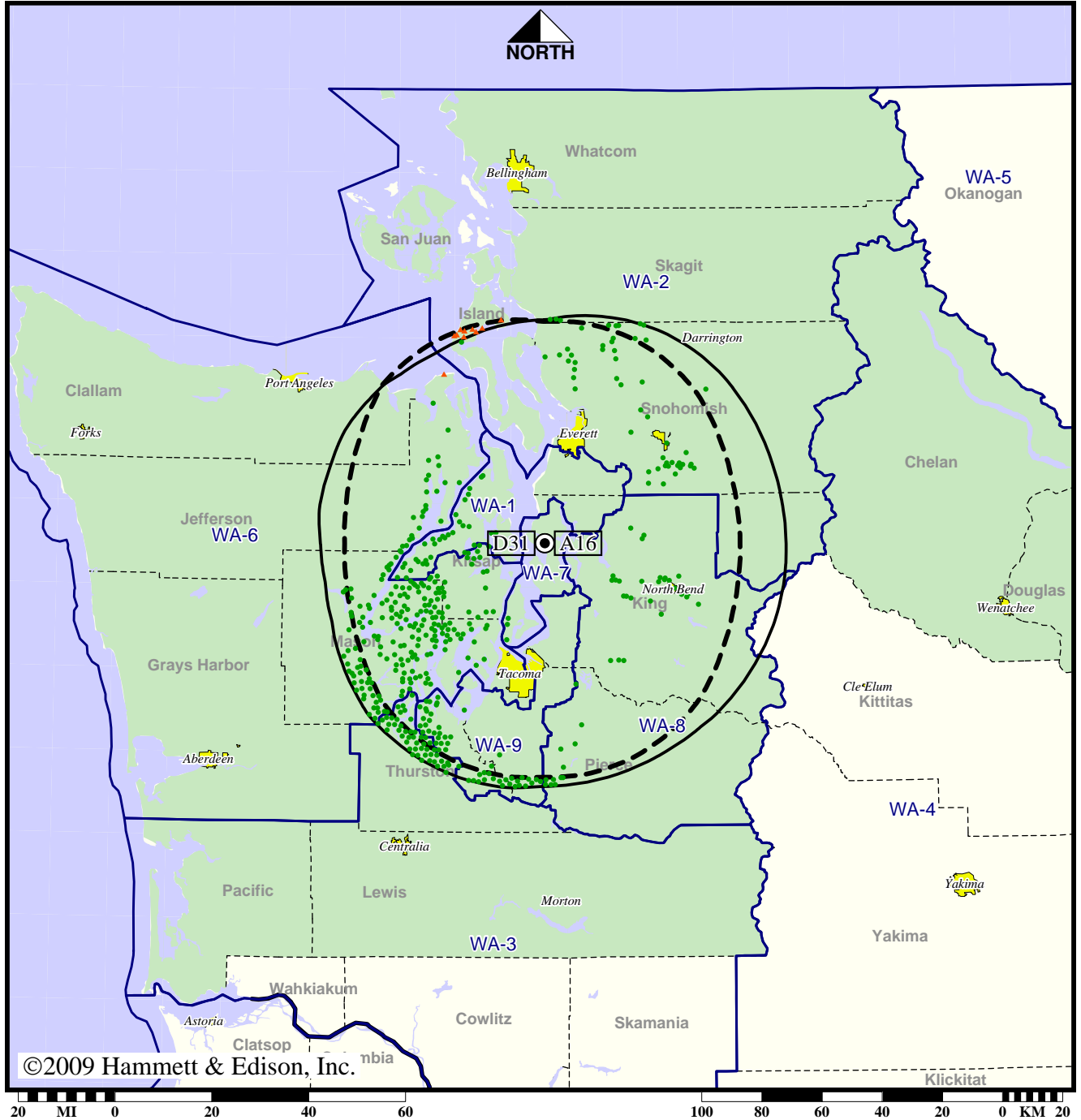
Analog service	3,269,746 persons
Digital service	3,505,444
Analog loss	4,841
Digital gain	240,539
Net gain	235,698

Station KONG-TV • Analog Channel 16, DTV Channel 31 • Everett, WA

Approved Post-Transition Operation: Licensed

Digital License (solid): 700 kW ERP at 218 m HAAT
 vs. Analog (dashed): 5000 kW ERP at 239 m HAAT

Market: Seattle-Tacoma, WA



©2009 Hammett & Edison, Inc.

- Coverage gained after DTV transition
- No symbol = no change in coverage
- ▲ Coverage lost after DTV transition

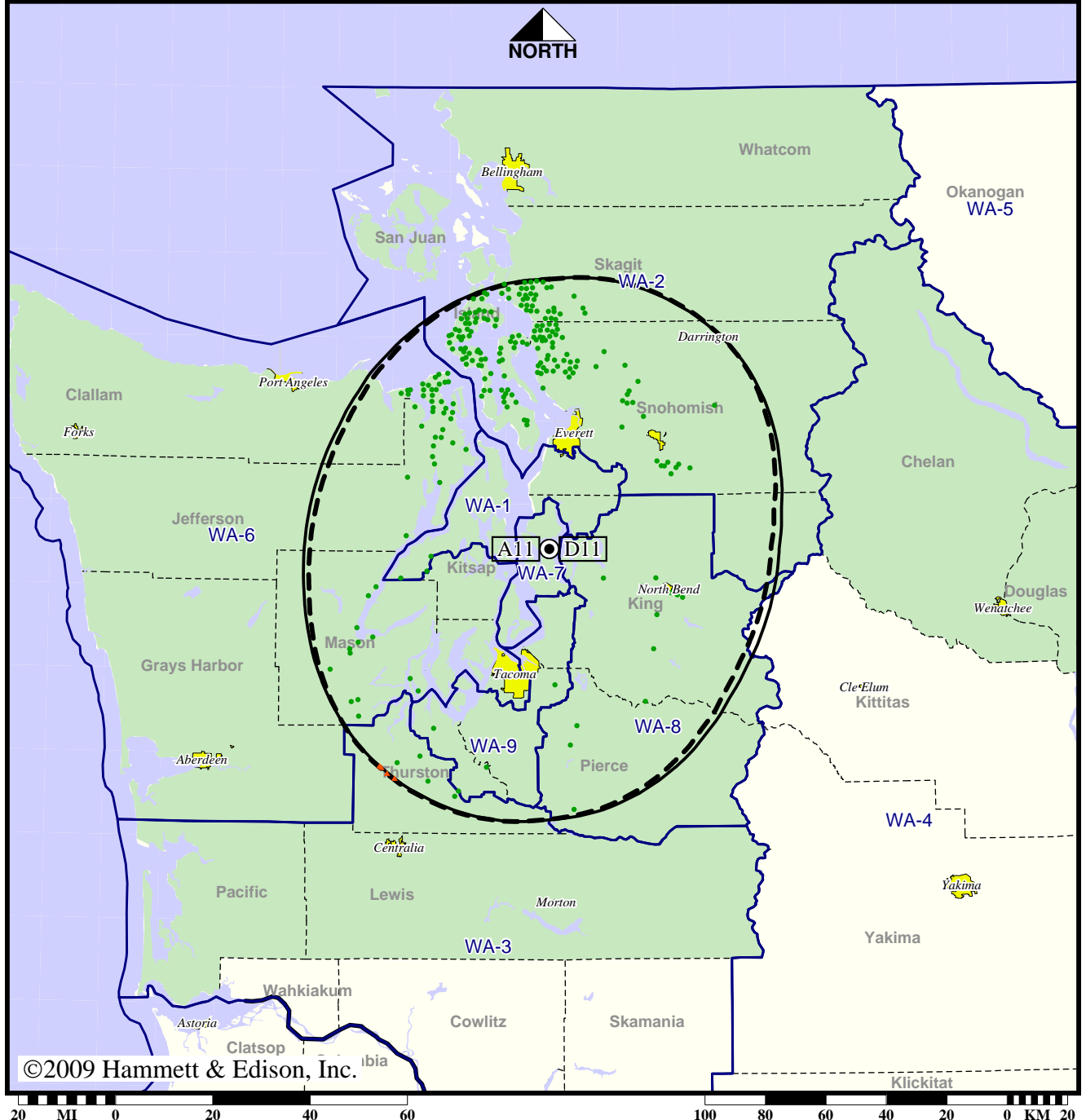
Analog service	3,269,746 persons
Digital service	3,505,444
Analog loss	4,841
Digital gain	240,539
Net gain	235,698

TV Station KSTW • Analog Channel 11, DTV Channel 11 • Tacoma, WA

Expected Operation on June 13: Granted Construction Permit

Digital CP (solid): 12.5 kW ERP at 276 m HAAT
 vs. Analog (dashed): 316 kW ERP at 276 m HAAT

Market: Seattle-Tacoma, WA



©2009 Hammett & Edison, Inc.

- Coverage gained after DTV transition
- No symbol = no change in coverage
- ▲ Coverage lost after DTV transition

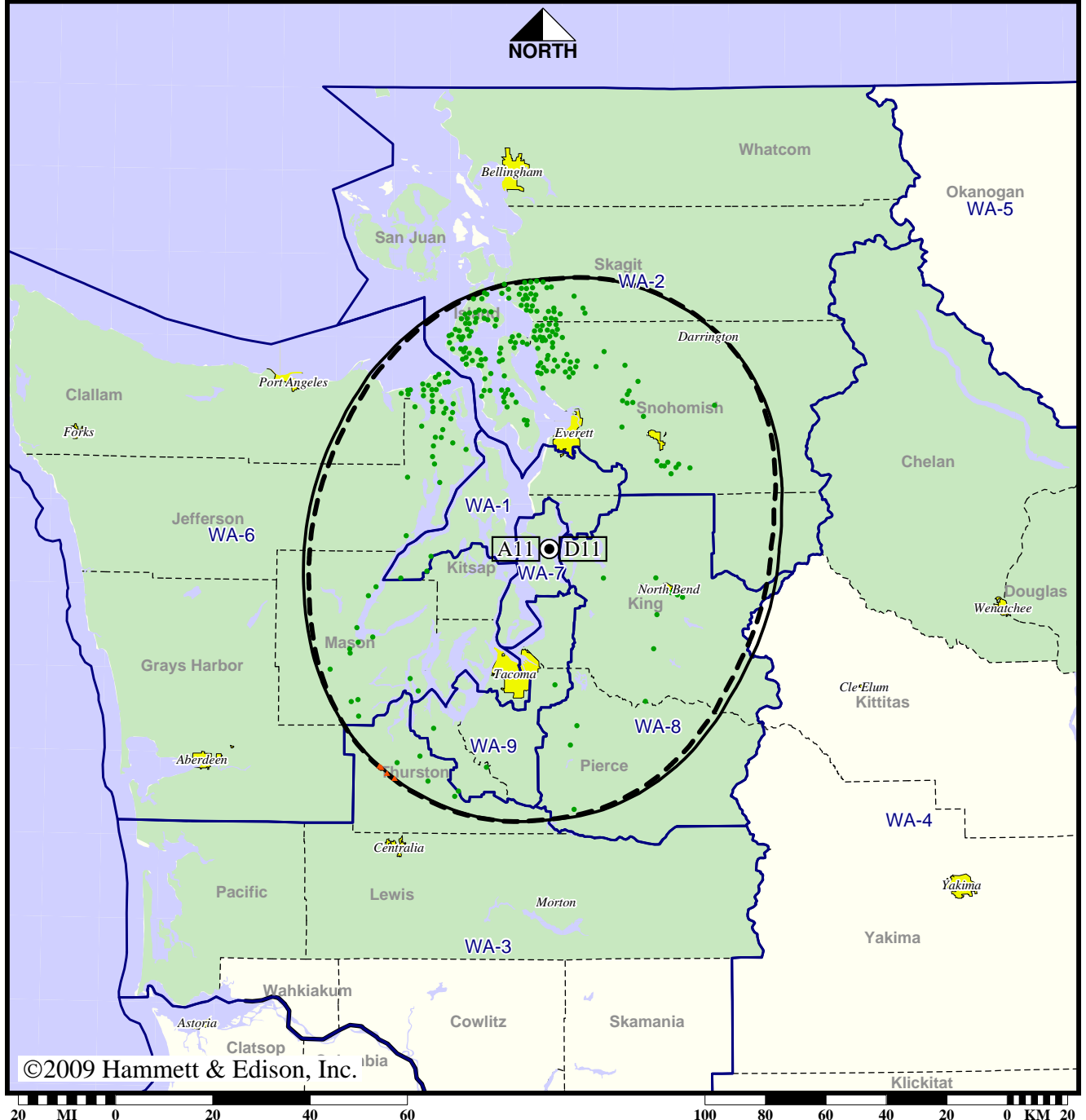
Analog service	3,476,331 persons
Digital service	3,580,236
Analog loss	547
Digital gain	104,452
Net gain	103,905

TV Station KSTW • Analog Channel 11, DTV Channel 11 • Tacoma, WA

Approved Post-Transition Operation: Granted Construction Permit

Digital CP (solid): 12.5 kW ERP at 276 m HAAT
 vs. Analog (dashed): 316 kW ERP at 276 m HAAT

Market: Seattle-Tacoma, WA



©2009 Hammett & Edison, Inc.

- Coverage gained after DTV transition
- No symbol = no change in coverage
- ▲ Coverage lost after DTV transition

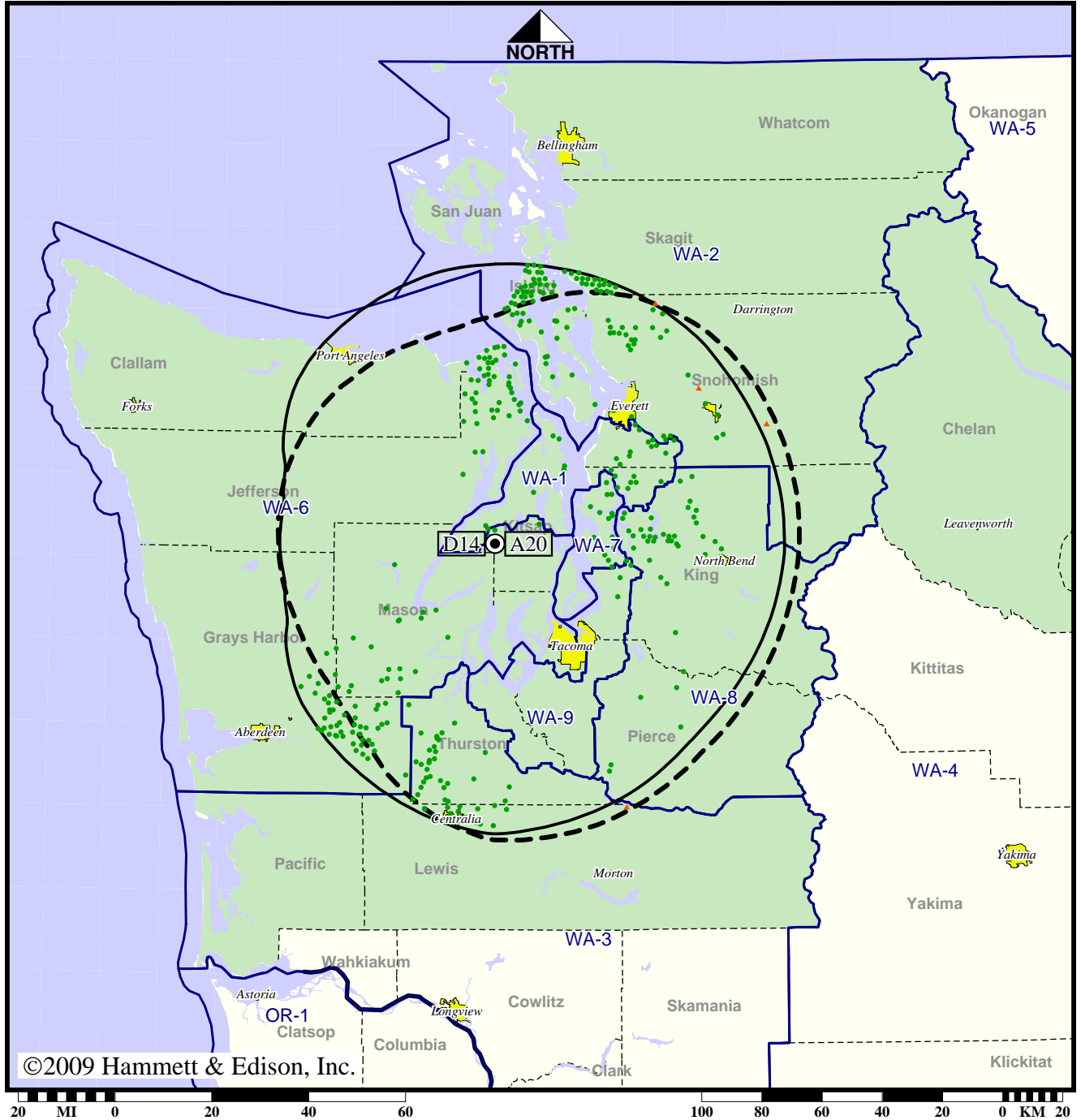
Analog service	3,476,331 persons
Digital service	3,580,236
Analog loss	547
Digital gain	104,452
Net gain	103,905

Station KTBW-TV • Analog Channel 20, DTV Channel 14 • Tacoma, WA

Expected Operation on June 13: Licensed

Digital License (solid): 90.0 kW ERP at 473 m HAAT
 vs. Analog (dashed): 3550 kW ERP at 491 m HAAT

Market: Seattle-Tacoma, WA



- Coverage gained after DTV transition
- No symbol = no change in coverage
- ▲ Coverage lost after DTV transition

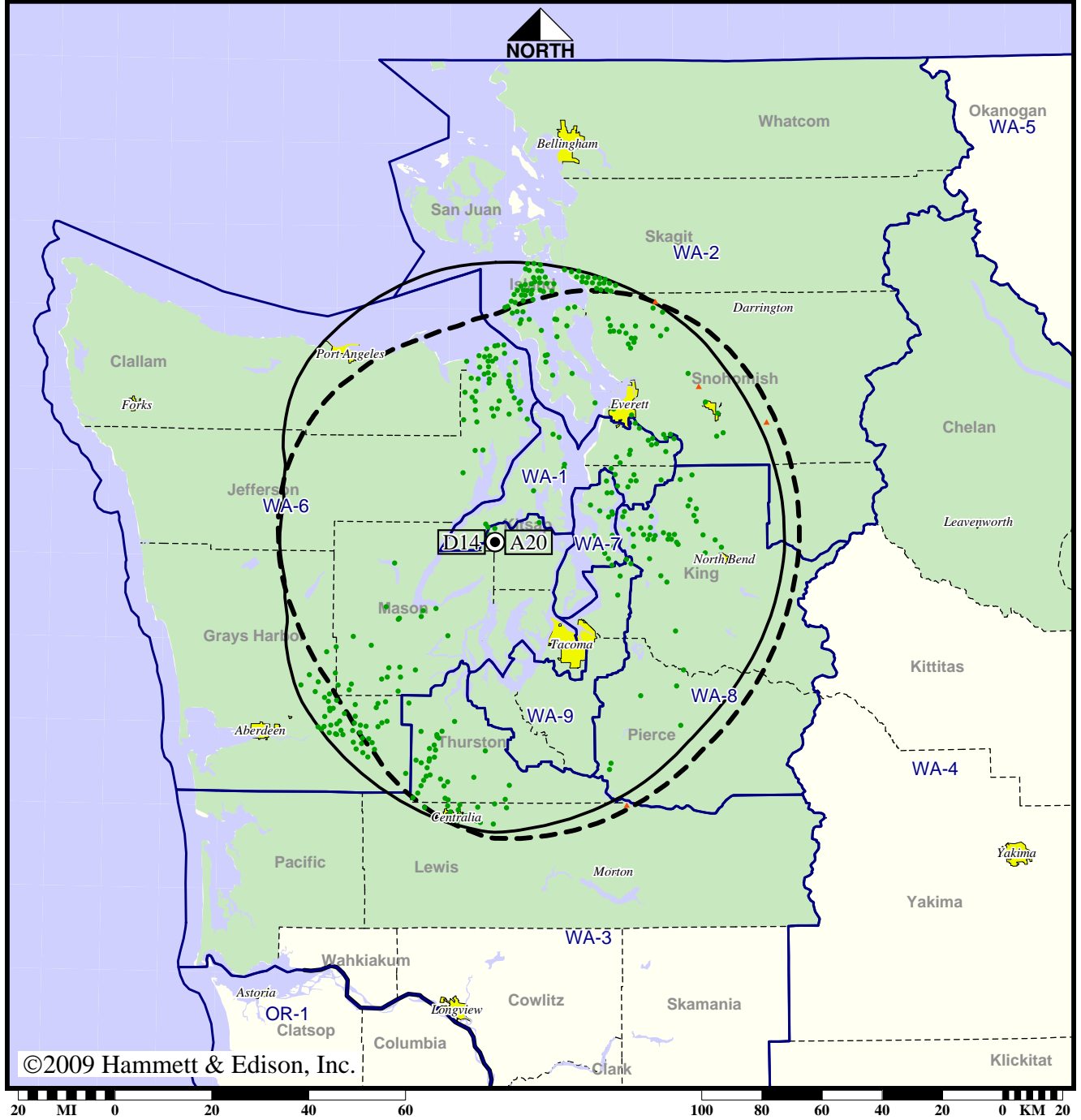
Analog service	3,272,789 persons
Digital service	3,594,472
Analog loss	177
Digital gain	321,860
Net gain	321,683

Station KTBW-TV • Analog Channel 20, DTV Channel 14 • Tacoma, WA

Approved Post-Transition Operation: Licensed

Digital License (solid): 90.0 kW ERP at 473 m HAAT
 vs. Analog (dashed): 3550 kW ERP at 491 m HAAT

Market: Seattle-Tacoma, WA



- Coverage gained after DTV transition
- No symbol = no change in coverage
- ▲ Coverage lost after DTV transition

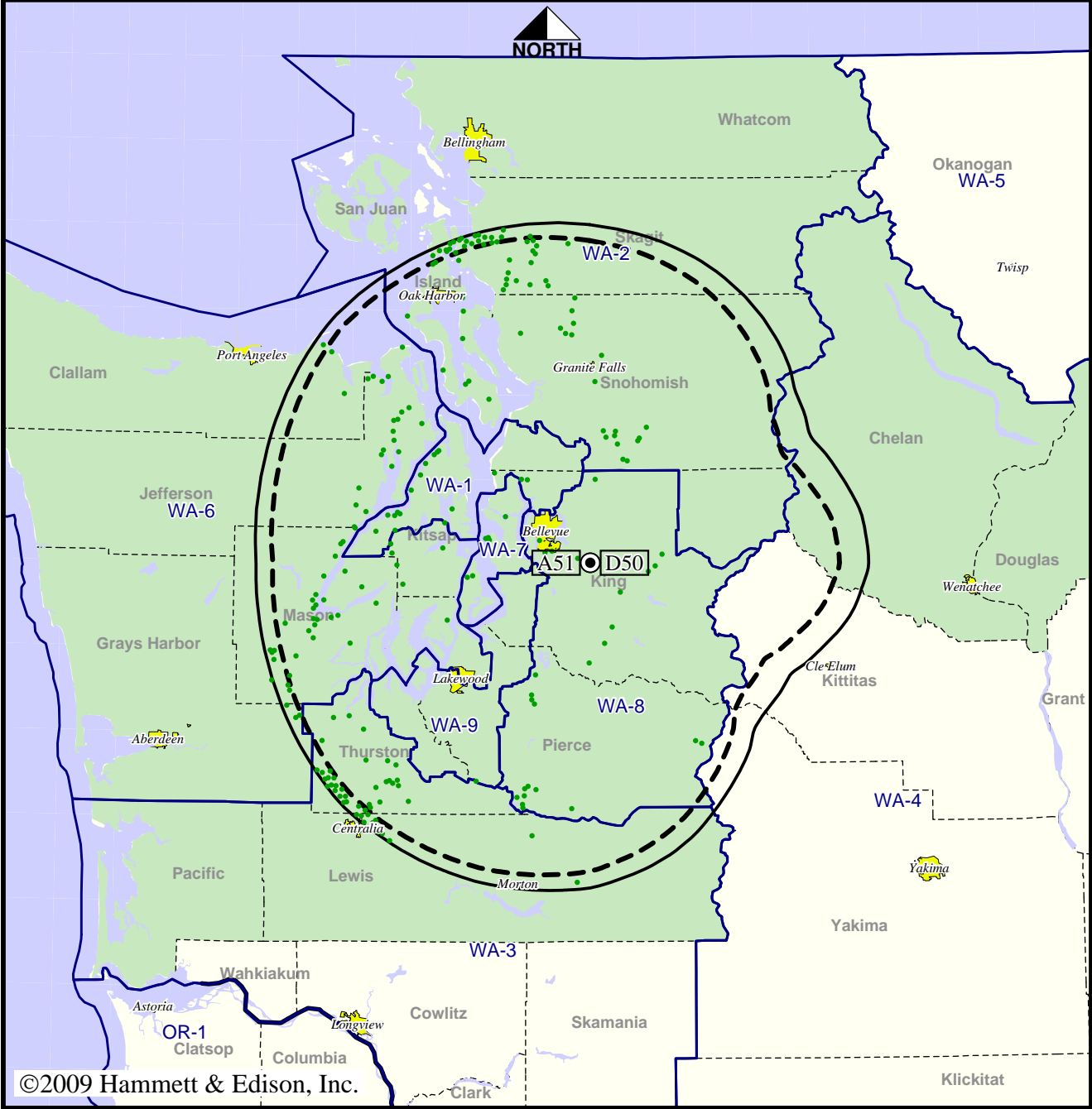
Analog service	3,272,789 persons
Digital service	3,594,472
Analog loss	177
Digital gain	321,860
Net gain	321,683

Station KUNS-TV • Analog Channel 51, DTV Channel 50 • Bellevue, WA

Expected Operation on June 13: Licensed

**Digital License (solid): 240 kW ERP at 719 m HAAT
vs. Analog (dashed): 3800 kW ERP at 719 m HAAT**

Market: Seattle-Tacoma, WA



©2009 Hammett & Edison, Inc.

- Coverage gained after DTV transition
- No symbol = no change in coverage

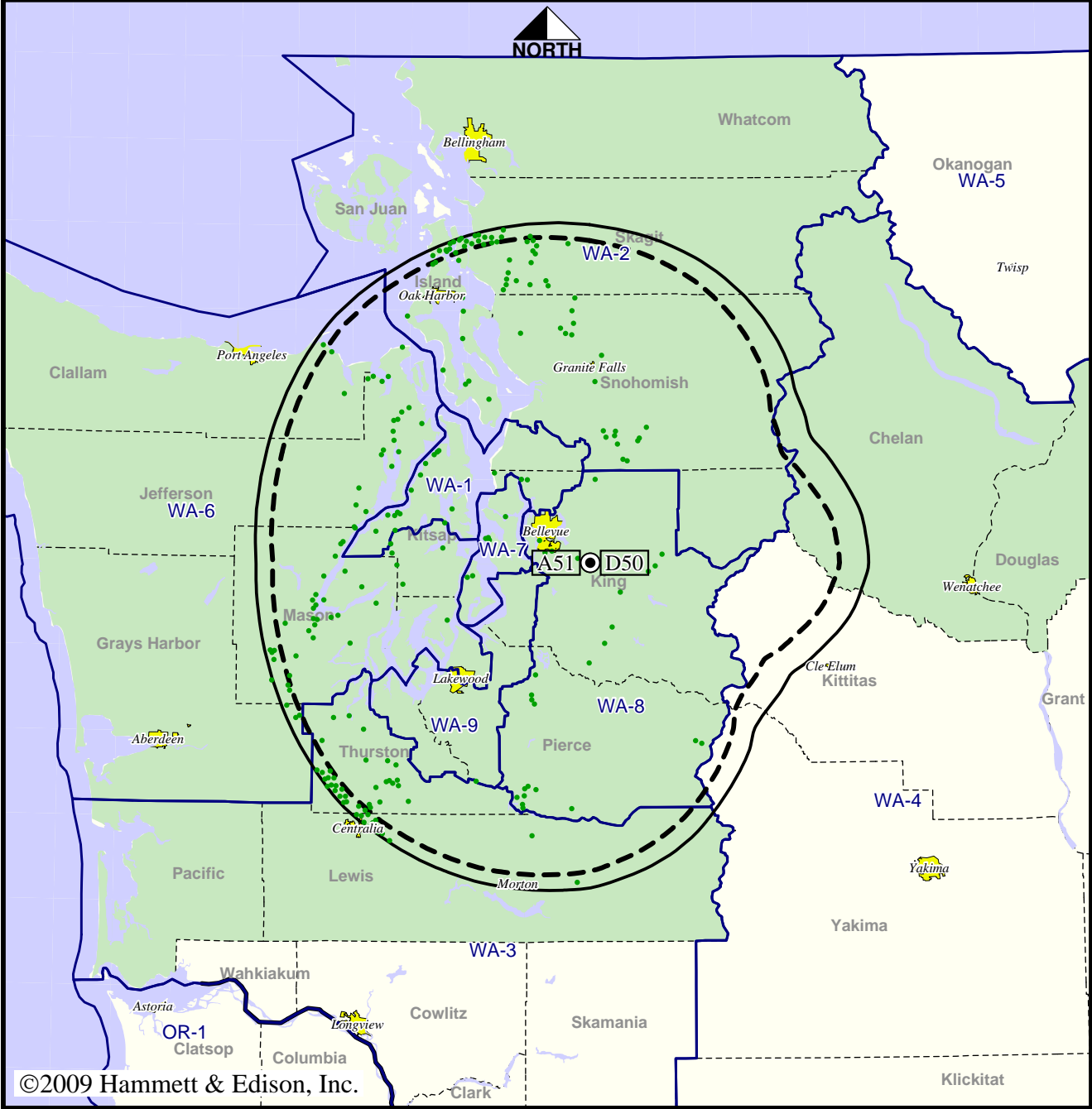
Analog service	3,532,460 persons
Digital service	3,612,909
Analog loss	0
Digital gain	80,449
Net gain	80,449

Station KUNS-TV • Analog Channel 51, DTV Channel 50 • Bellevue, WA

Approved Post-Transition Operation: Licensed

Digital License (solid): 240 kW ERP at 719 m HAAT
 vs. Analog (dashed): 3800 kW ERP at 719 m HAAT

Market: Seattle-Tacoma, WA



©2009 Hammett & Edison, Inc.

- Coverage gained after DTV transition
- No symbol = no change in coverage

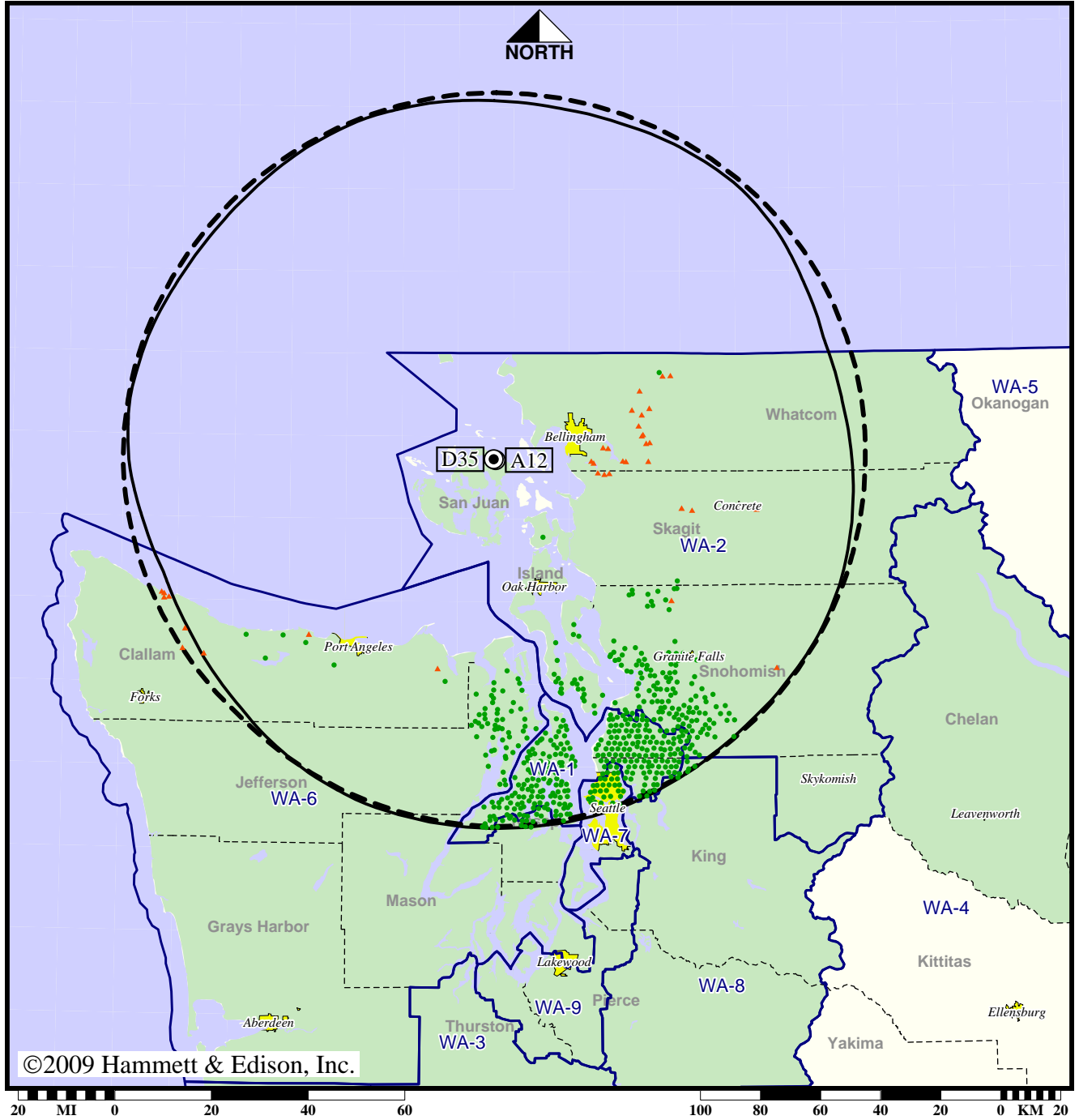
Analog service	3,532,460 persons
Digital service	3,612,909
Analog loss	0
Digital gain	80,449
Net gain	80,449

Station KVOS-TV • Analog Channel 12, DTV Channel 35 • Bellingham, WA

Expected Operation on June 13: Granted Construction Permit

Digital CP (solid): 580 kW ERP at 799 m HAAT
 vs. Analog (dashed): 234 kW ERP at 722 m HAAT

Market: Seattle-Tacoma, WA



©2009 Hammett & Edison, Inc.

- Coverage gained after DTV transition
- No symbol = no change in coverage
- ▲ Coverage lost after DTV transition

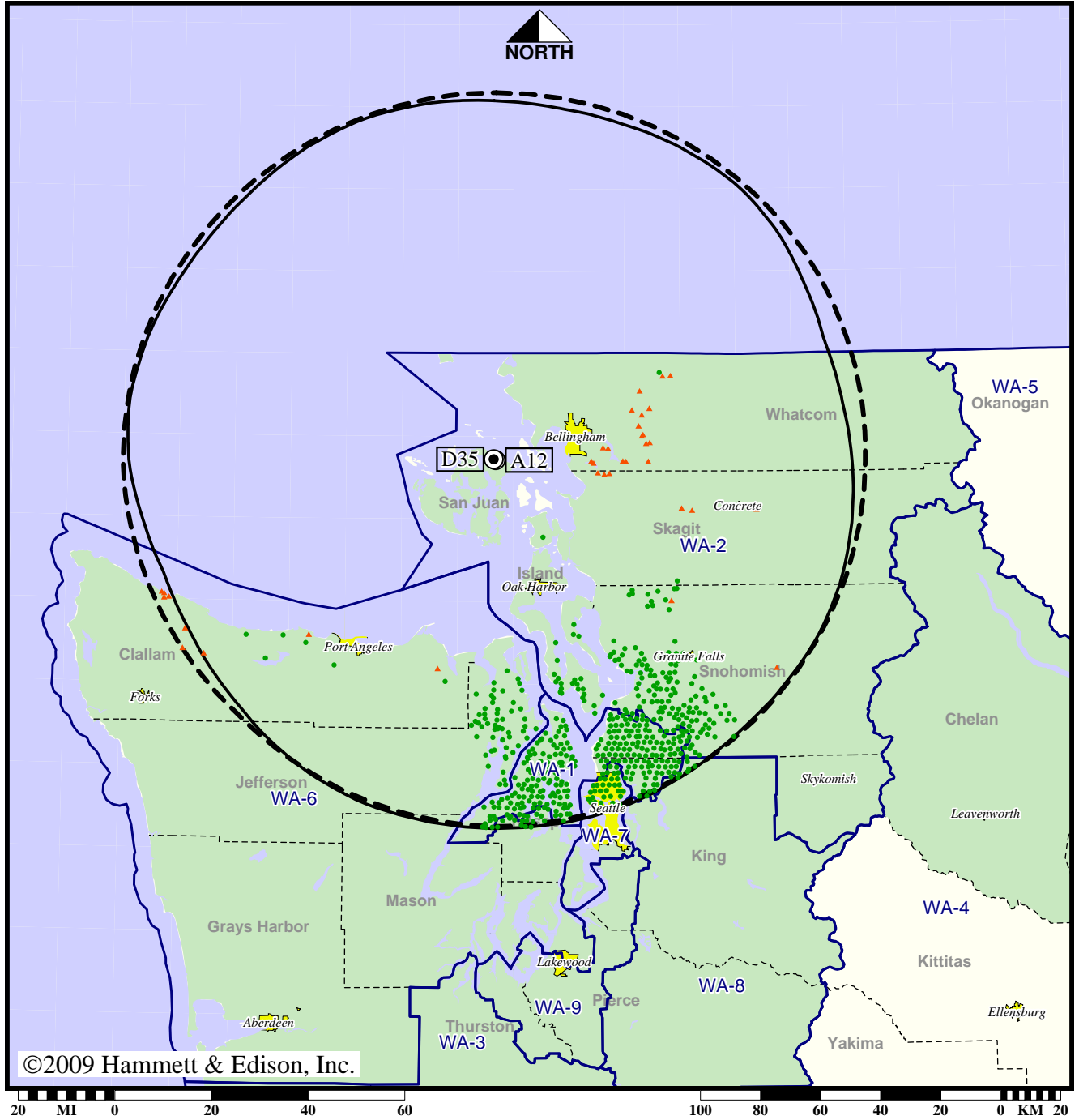
Analog service	595,445 persons
Digital service	1,633,841
Analog loss	5,051
Digital gain	1,043,447
Net gain	1,038,396

Station KVOS-TV • Analog Channel 12, DTV Channel 35 • Bellingham, WA

Approved Post-Transition Operation: Granted Construction Permit

Digital CP (solid): 580 kW ERP at 799 m HAAT
 vs. Analog (dashed): 234 kW ERP at 722 m HAAT

Market: Seattle-Tacoma, WA

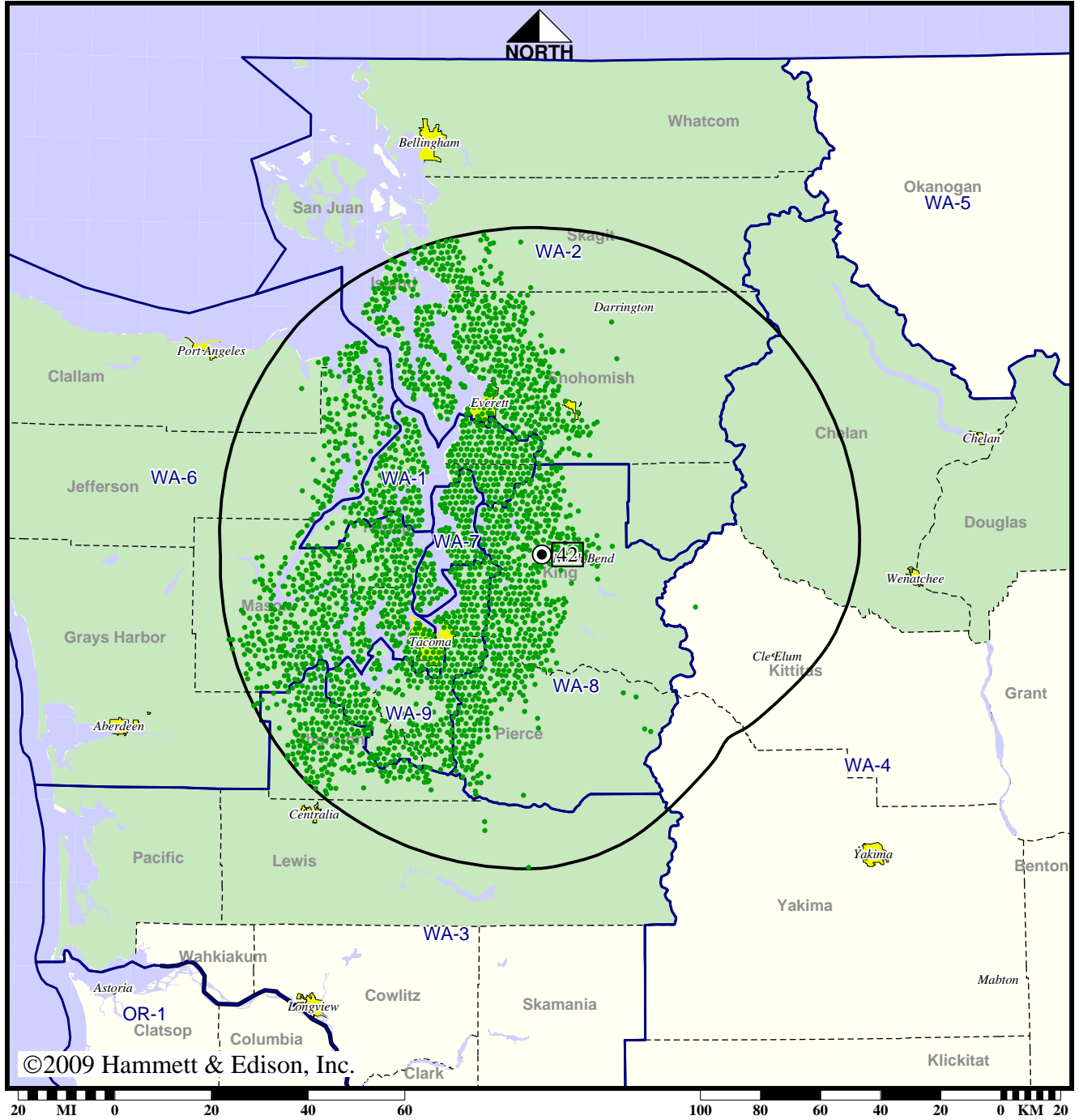


©2009 Hammett & Edison, Inc.

- Coverage gained after DTV transition
- No symbol = no change in coverage
- ▲ Coverage lost after DTV transition

Analog service	595,445 persons
Digital service	1,633,841
Analog loss	5,051
Digital gain	1,043,447
Net gain	1,038,396

DTV Station KWDK • Channel 42 • Tacoma, WA
Expected Operation on June 13: Licensed
Digital License (solid): 144 kW ERP at 695 m HAAT
Market: Seattle-Tacoma, WA

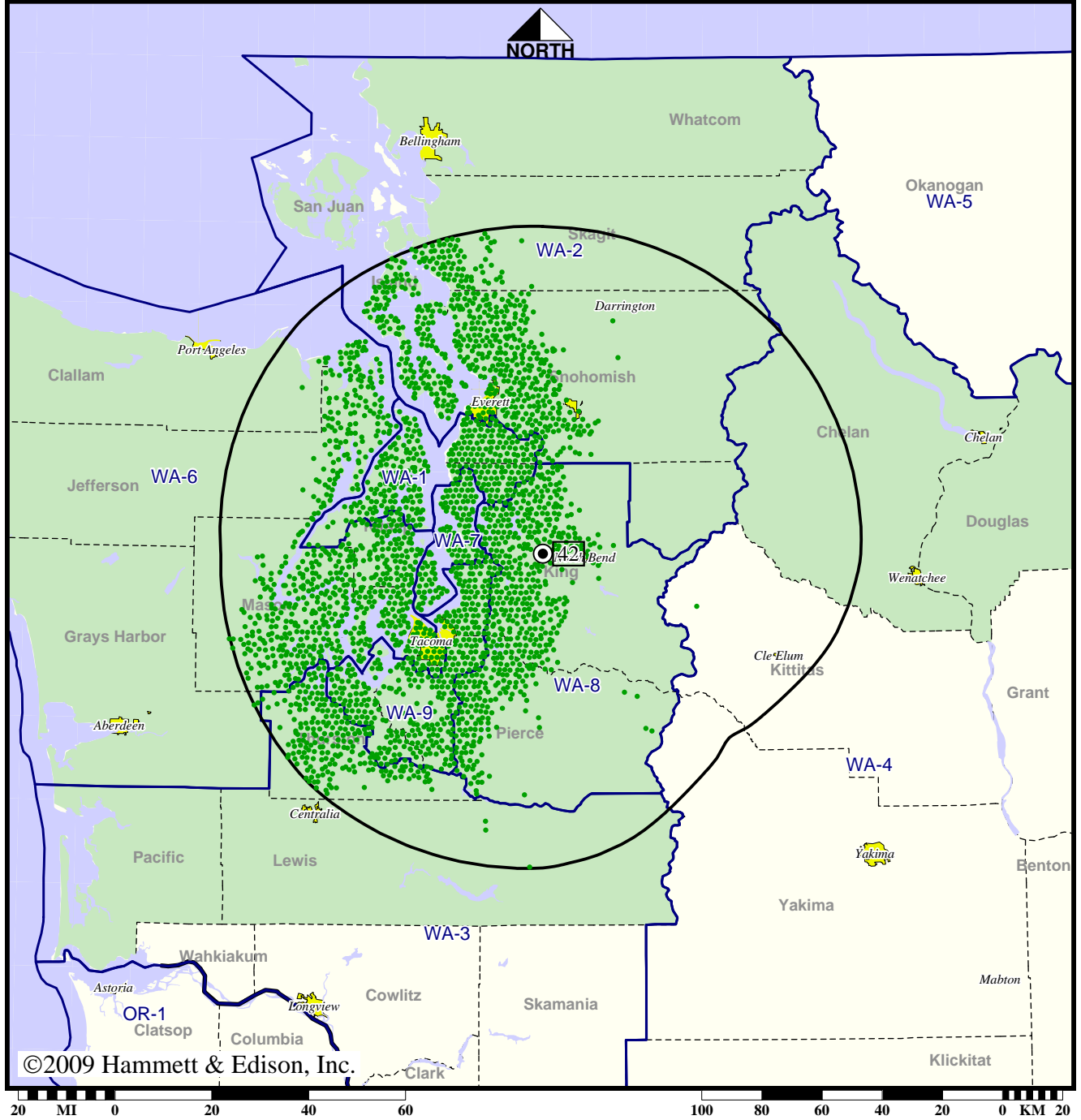


©2009 Hammett & Edison, Inc.

● Coverage gained after DTV transition

Digital service 3,603,614 persons

DTV Station KWDK • Channel 42 • Tacoma, WA
 Approved Post-Transition Operation: Licensed
 Digital License (solid): 144 kW ERP at 695 m HAAT
 Market: Seattle-Tacoma, WA



● Coverage gained after DTV transition

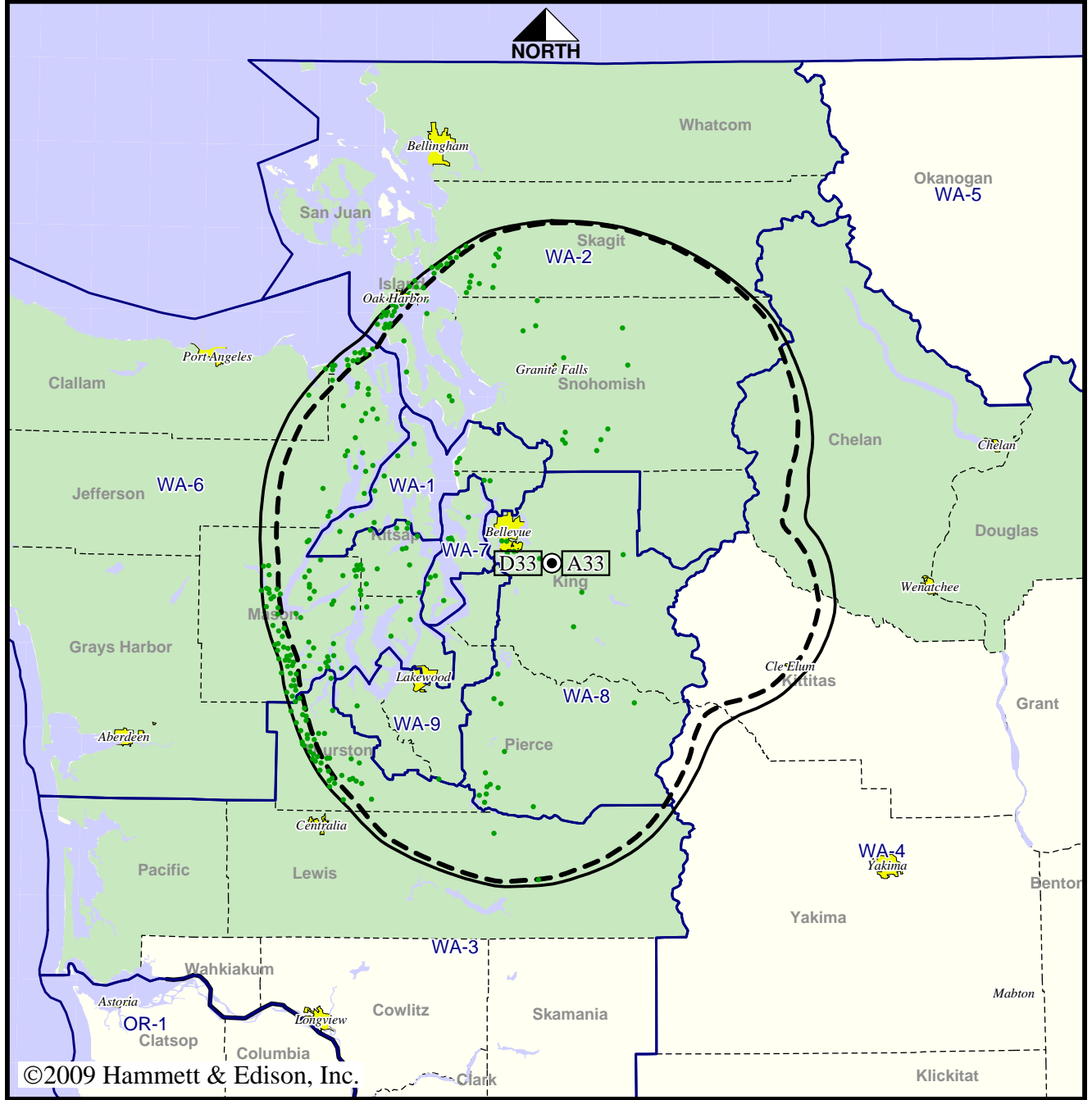
Digital service 3,603,614 persons

TV Station KWPX • Analog Channel 33, DTV Channel 33 • Bellevue, WA

Expected Operation on June 13: Granted Construction Permit

**Digital CP (solid): 179 kW ERP at 716 m HAAT
vs. Analog (dashed): 3720 kW ERP at 717 m HAAT**

Market: Seattle-Tacoma, WA



©2009 Hammett & Edison, Inc.

● Coverage gained after DTV transition
No symbol = no change in coverage

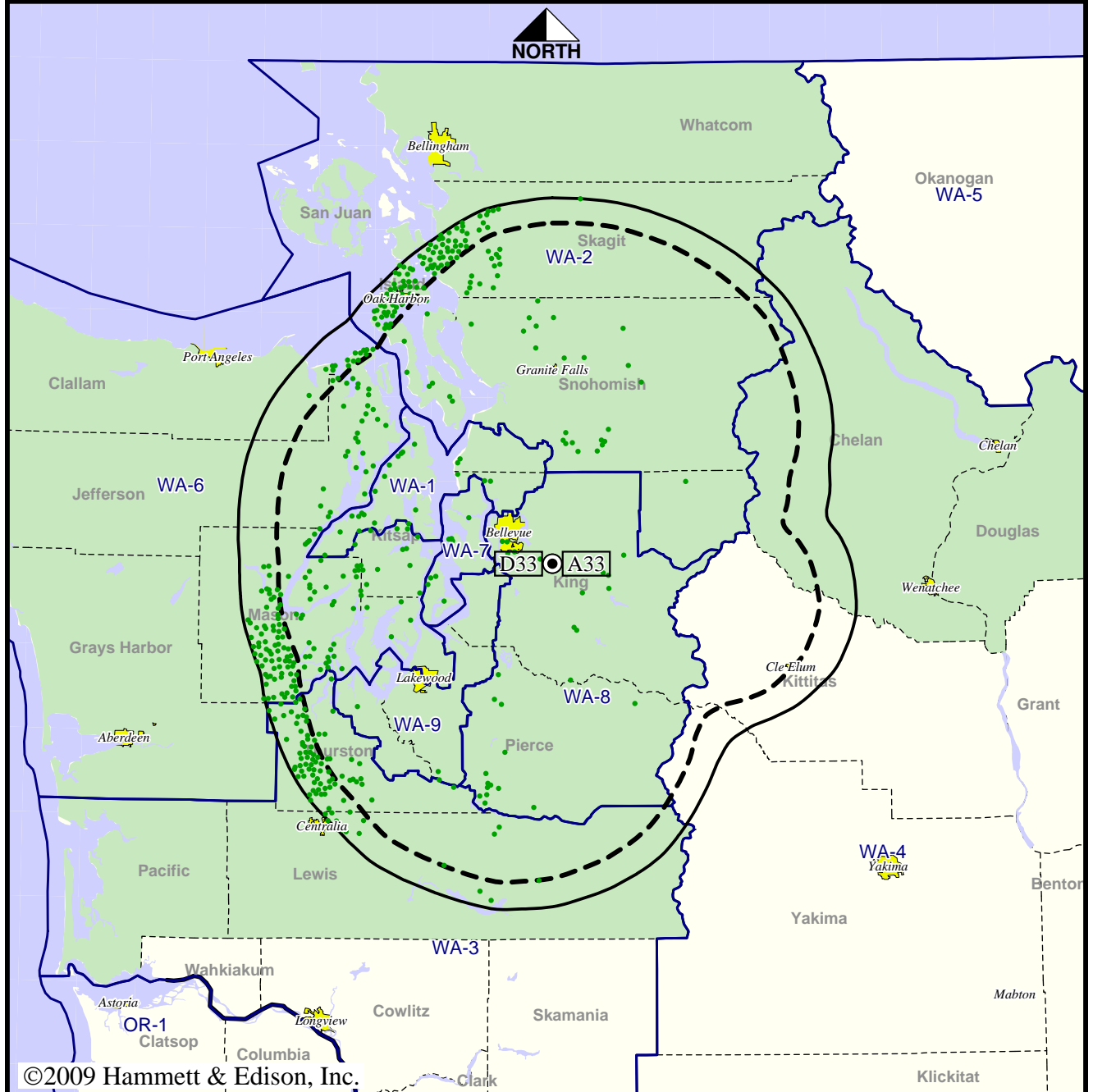
Analog service	3,441,463 persons
Digital service	3,561,146
Analog loss	0
Digital gain	119,683
Net gain	119,683

TV Station KWPX • Analog Channel 33, DTV Channel 33 • Bellevue, WA

Approved Post-Transition Operation: Granted Construction Permit

**Digital CP (solid): 400 kW ERP at 716 m HAAT
vs. Analog (dashed): 3720 kW ERP at 717 m HAAT**

Market: Seattle-Tacoma, WA



©2009 Hammett & Edison, Inc.

● Coverage gained after DTV transition
No symbol = no change in coverage

Analog service	3,441,463 persons
Digital service	3,612,463
Analog loss	0
Digital gain	171,000
Net gain	171,000

BMPCDT-20080620AJH
KWPX Digital CP