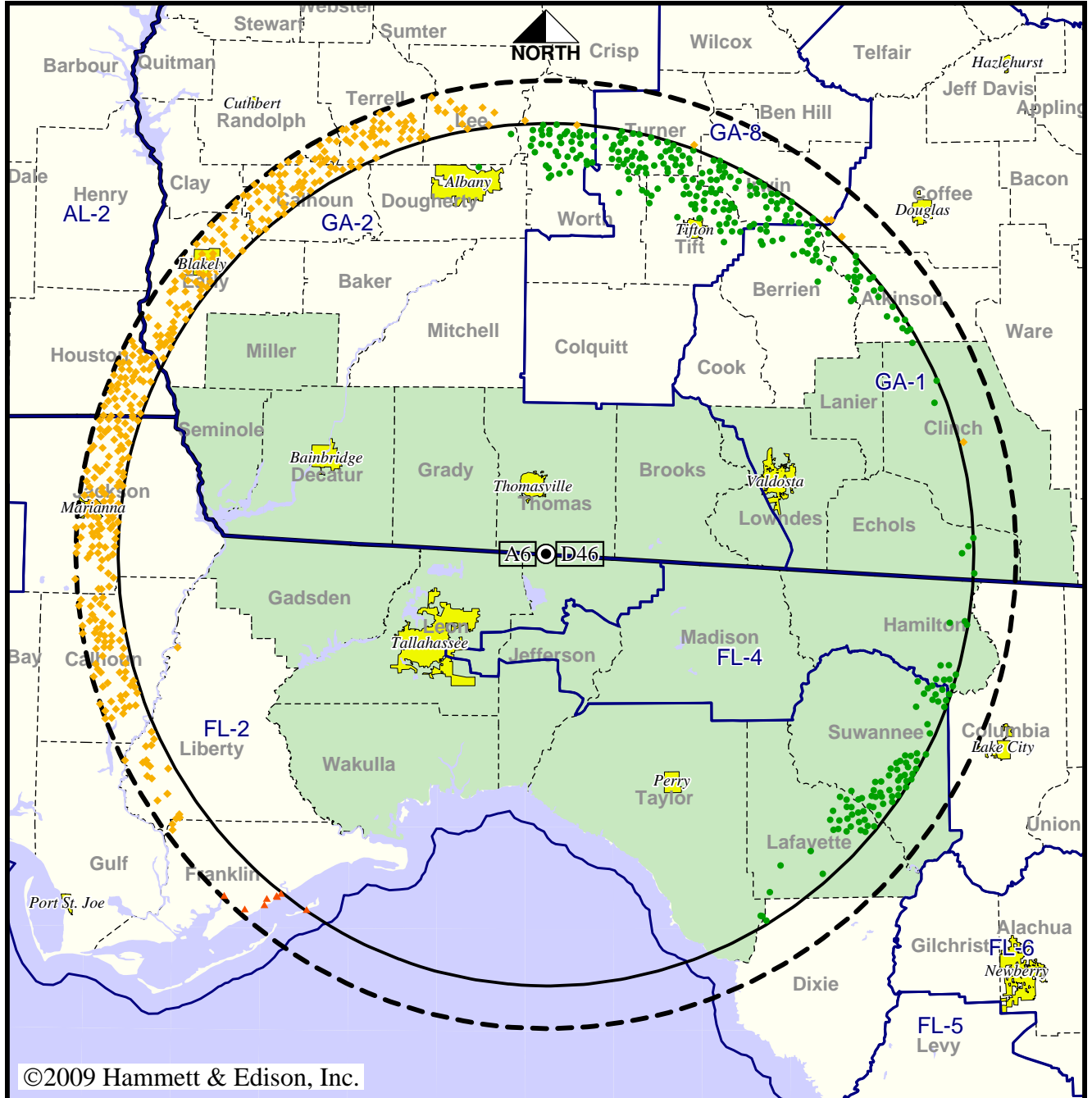


TV Station WCTV • Analog Channel 6, DTV Channel 46 • Thomasville, GA

Expected Operation on June 13: Licensed

Digital License (solid): 1000 kW ERP at 566 m HAAT, Network: CBS
 vs. Analog (dashed): 97.7 kW ERP at 619 m HAAT, Network: CBS

Market: Tallahassee, FL-Thomasville, GA



- Coverage gained after DTV transition
- No symbol = no change in coverage
- ◆ Coverage lost but still served by same network
- ▲ Coverage lost and no other service by same network

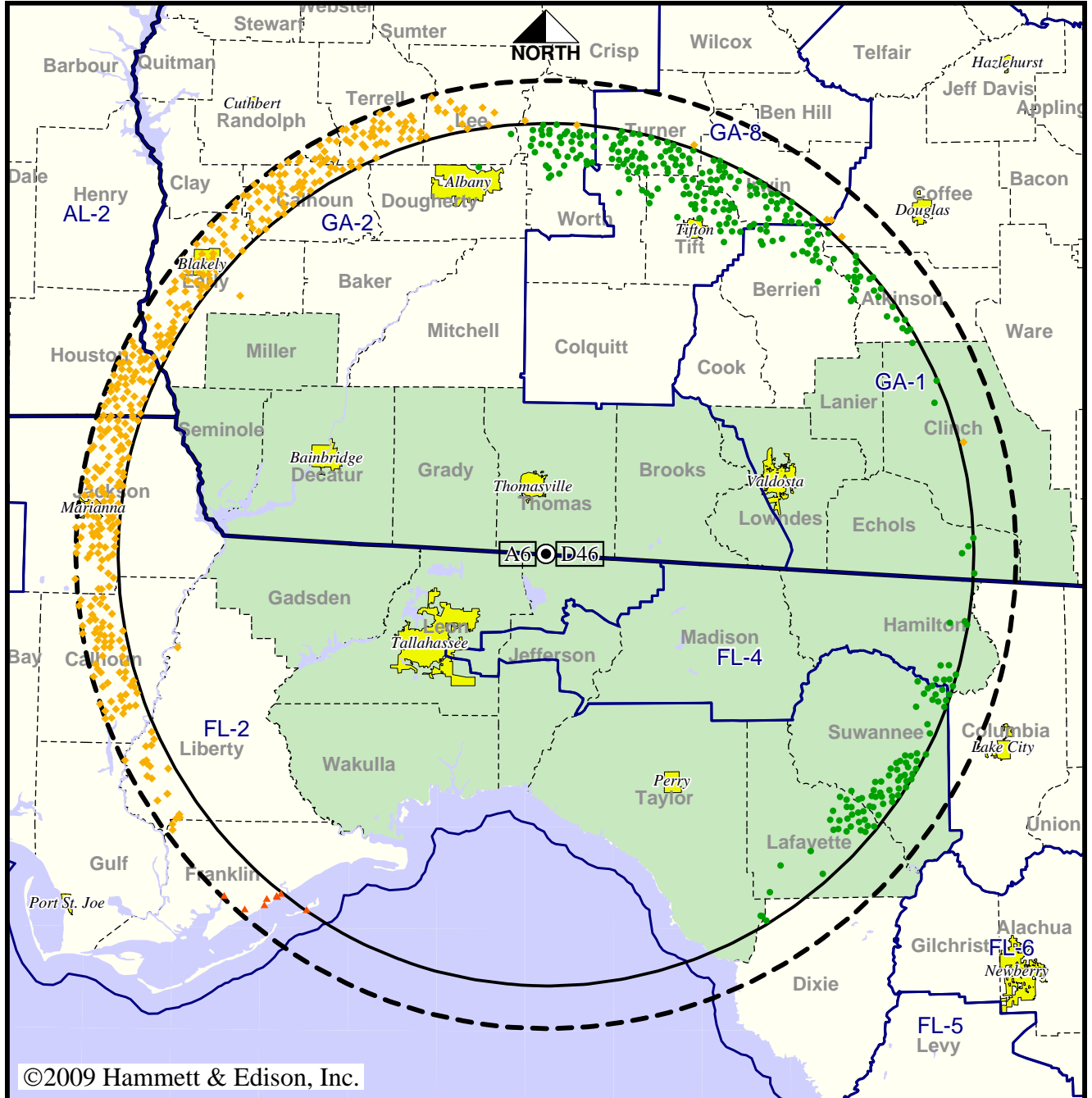
| | |
|-----------------|-----------------|
| Analog service | 977,643 persons |
| Digital service | 957,058 |
| Analog loss | 36,458 |
| Digital gain | 15,873 |
| Net gain | -20,585 |

TV Station WCTV • Analog Channel 6, DTV Channel 46 • Thomasville, GA

Approved Post-Transition Operation: Licensed

Digital License (solid): 1000 kW ERP at 566 m HAAT, Network: CBS
 vs. Analog (dashed): 97.7 kW ERP at 619 m HAAT, Network: CBS

Market: Tallahassee, FL-Thomasville, GA



©2009 Hammett & Edison, Inc.

10 MI 0 10 20 30 40 50 60 70 100 80 60 40 20 0 KM 20

- Coverage gained after DTV transition
- No symbol = no change in coverage
- ◆ Coverage lost but still served by same network
- ▲ Coverage lost and no other service by same network

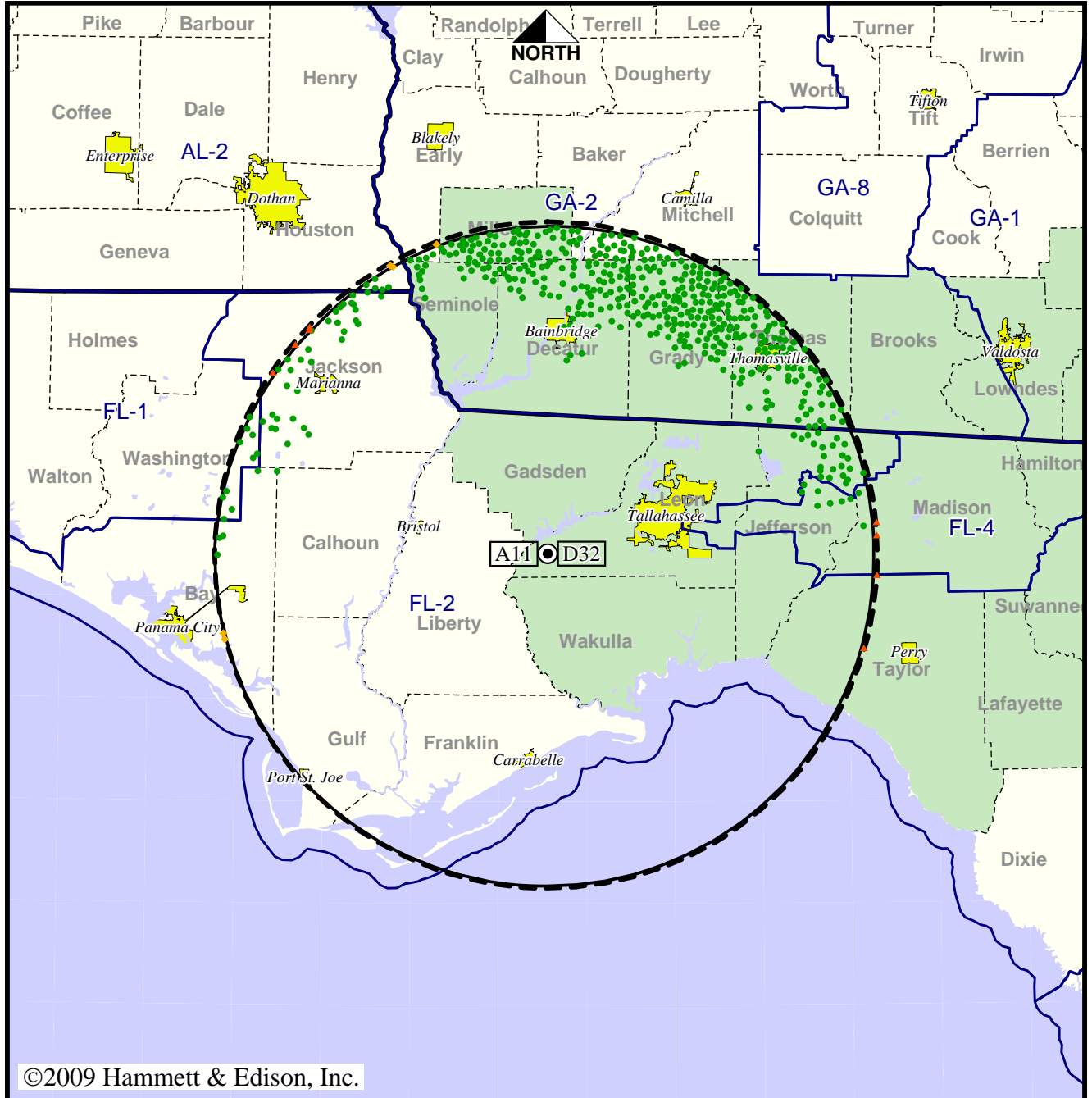
| | |
|-----------------|-----------------|
| Analog service | 977,643 persons |
| Digital service | 957,016 |
| Analog loss | 36,491 |
| Digital gain | 15,864 |
| Net gain | -20,627 |

Station WFSU-TV • Analog Channel 11, DTV Channel 32 • Tallahassee, FL

Expected Operation on June 13: Licensed

Digital License (solid): 938 kW ERP at 237 m HAAT, Network: PBS
 vs. Analog (dashed): 316 kW ERP at 232 m HAAT, Network: PBS

Market: Tallahassee, FL-Thomasville, GA



©2009 Hammett & Edison, Inc.



- Coverage gained after DTV transition
- No symbol = no change in coverage
- ◆ Coverage lost but still served by same network
- ▲ Coverage lost and no other service by same network

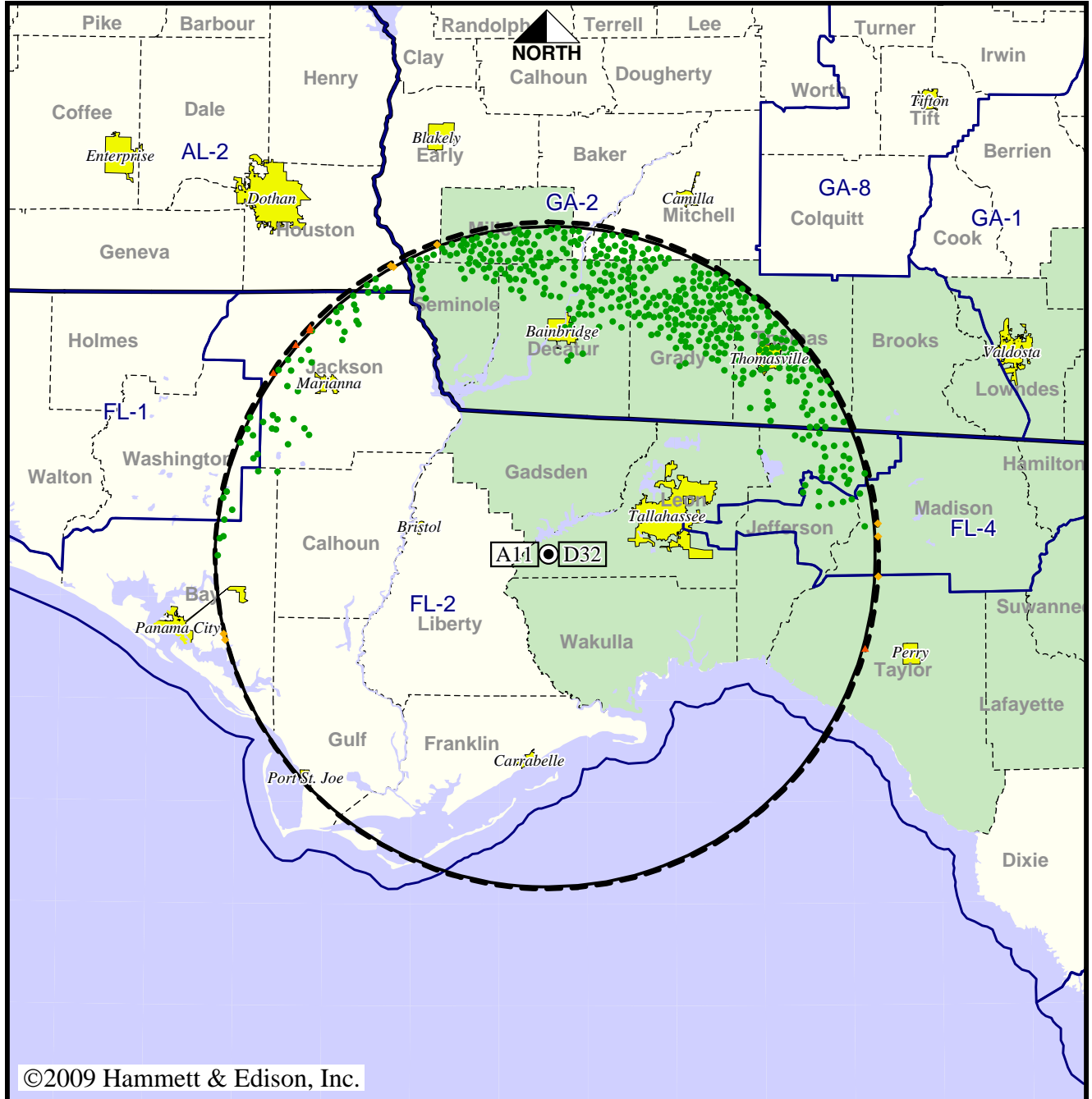
| | |
|-----------------|-----------------|
| Analog service | 454,628 persons |
| Digital service | 517,413 |
| Analog loss | 254 |
| Digital gain | 63,039 |
| Net gain | 62,785 |

Station WFSU-TV • Analog Channel 11, DTV Channel 32 • Tallahassee, FL

Approved Post-Transition Operation: Licensed

Digital License (solid): 938 kW ERP at 237 m HAAT, Network: PBS
 vs. Analog (dashed): 316 kW ERP at 232 m HAAT, Network: PBS

Market: Tallahassee, FL-Thomasville, GA



- Coverage gained after DTV transition
- No symbol = no change in coverage
- ◆ Coverage lost but still served by same network
- ▲ Coverage lost and no other service by same network

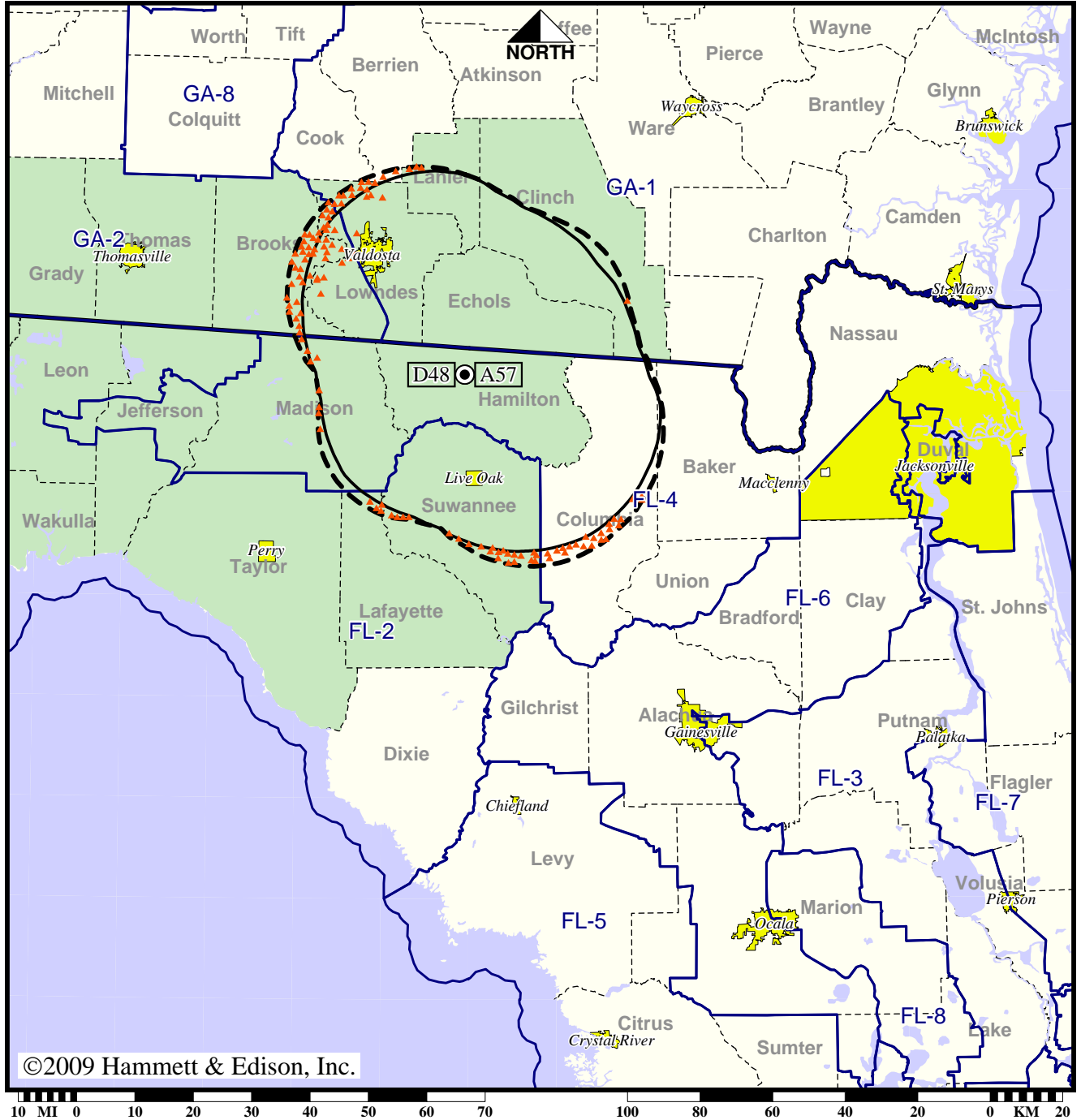
| | |
|-----------------|-----------------|
| Analog service | 454,628 persons |
| Digital service | 515,986 |
| Analog loss | 254 |
| Digital gain | 61,612 |
| Net gain | 61,358 |

TV Station WFXU • Analog Channel 57, DTV Channel 48 • Live Oak, FL

Expected Operation on June 13: Licensed

Digital License (solid): 22.0 kW ERP at 134 m HAAT
 vs. Analog (dashed): 2510 kW ERP at 135 m HAAT

Market: Tallahassee, FL-Thomasville, GA



©2009 Hammett & Edison, Inc.

- No symbol = no change in coverage
- ▲ Coverage lost after DTV transition

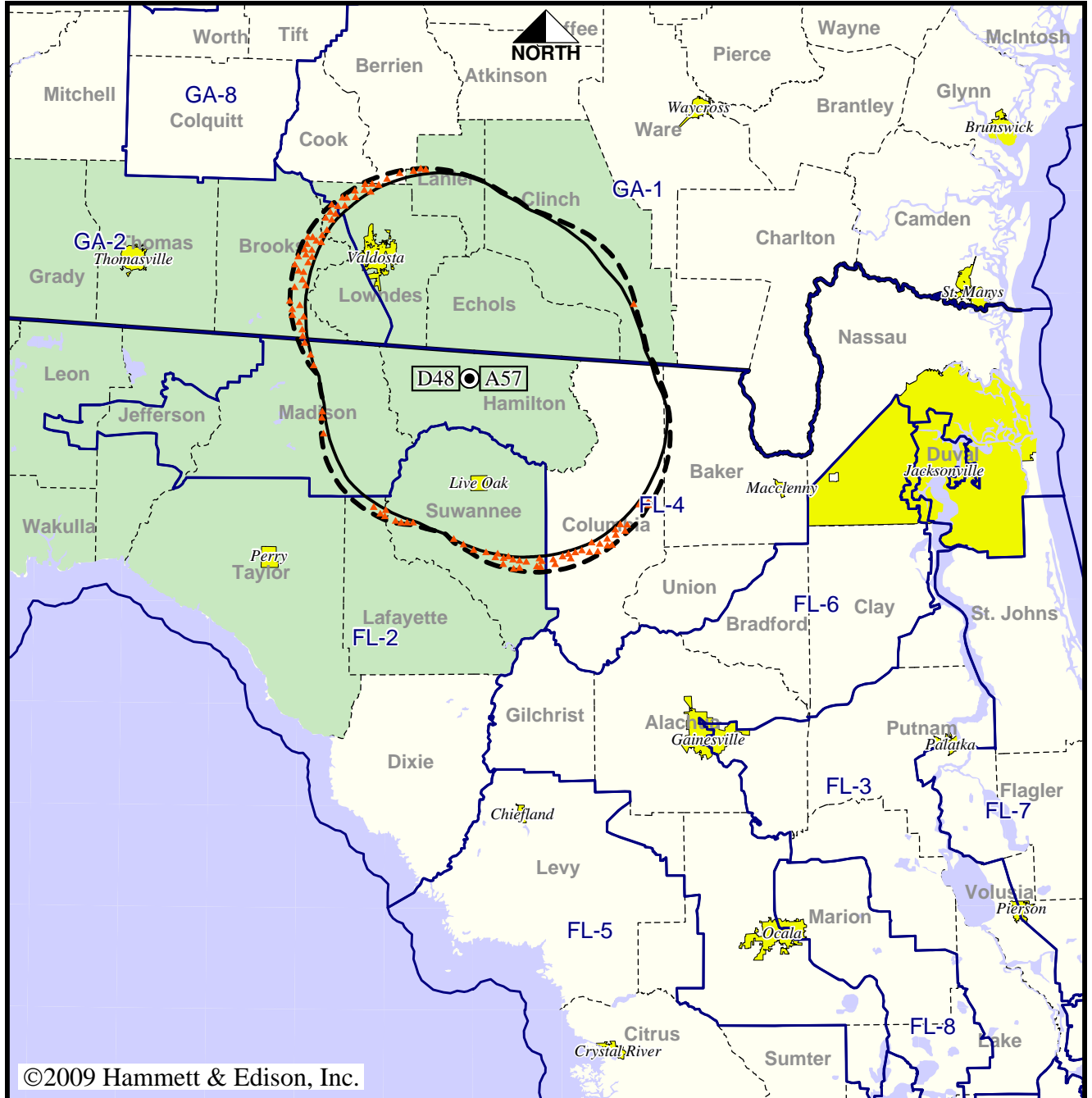
| | |
|-----------------|-----------------|
| Analog service | 195,184 persons |
| Digital service | 178,592 |
| Analog loss | 16,592 |
| Digital gain | 0 |
| Net gain | -16,592 |

TV Station WFXU • Analog Channel 57, DTV Channel 48 • Live Oak, FL

Approved Post-Transition Operation: Licensed

Digital License (solid): 22.0 kW ERP at 134 m HAAT
 vs. Analog (dashed): 2510 kW ERP at 135 m HAAT

Market: Tallahassee, FL-Thomasville, GA



©2009 Hammett & Edison, Inc.

10 MI 0 10 20 30 40 50 60 70 100 80 60 40 20 0 KM 20

- No symbol = no change in coverage
- ▲ Coverage lost after DTV transition

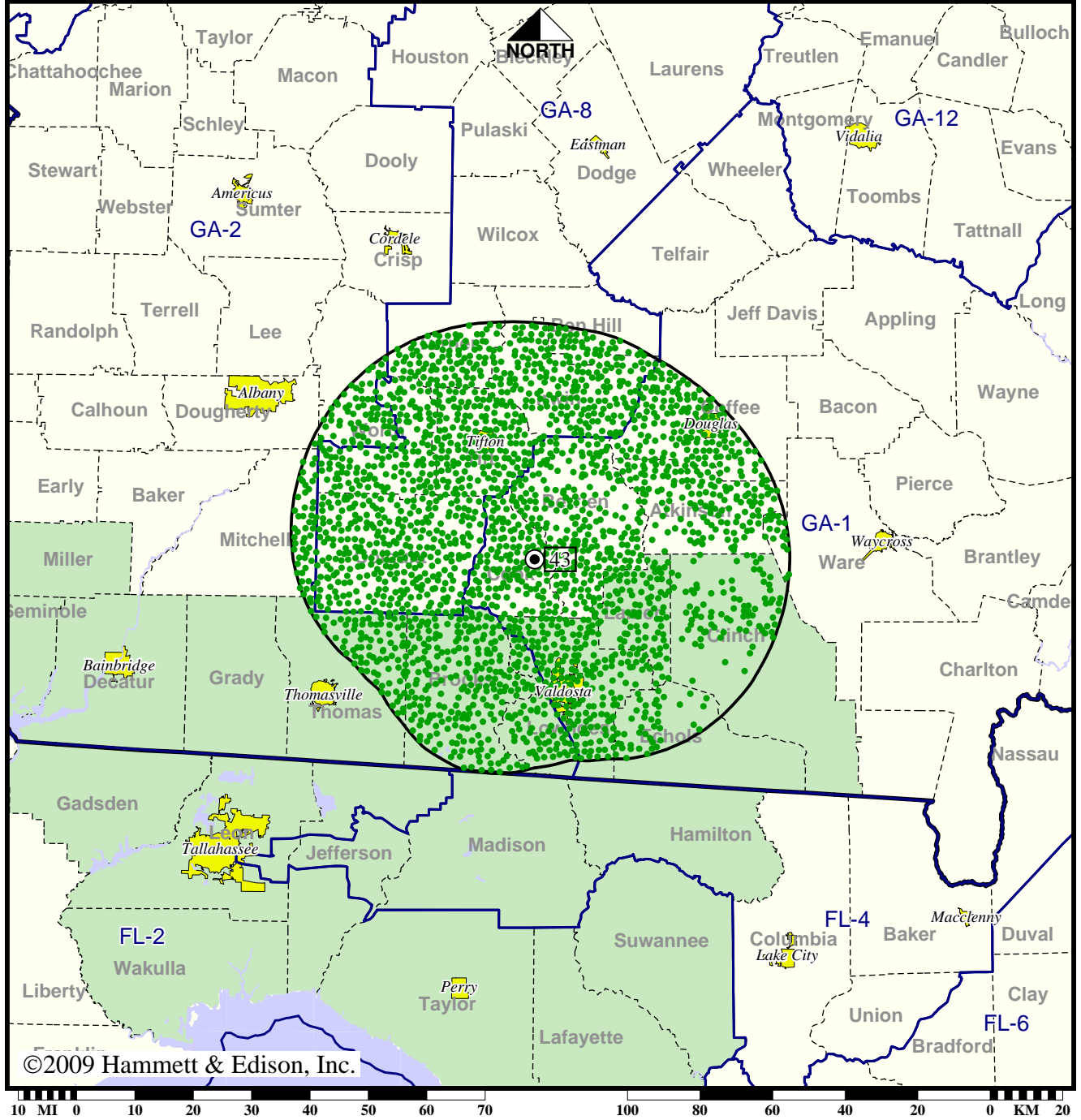
| | |
|-----------------|-----------------|
| Analog service | 195,184 persons |
| Digital service | 181,565 |
| Analog loss | 13,619 |
| Digital gain | 0 |
| Net gain | -13,619 |

DTV Station WSWG • Channel 43 • Valdosta, GA

Expected Operation on June 13: Licensed

Digital License (solid): 50.0 kW ERP at 253 m HAAT, Network: CBS

Market: Tallahassee, FL-Thomasville, GA



● Coverage gained after DTV transition

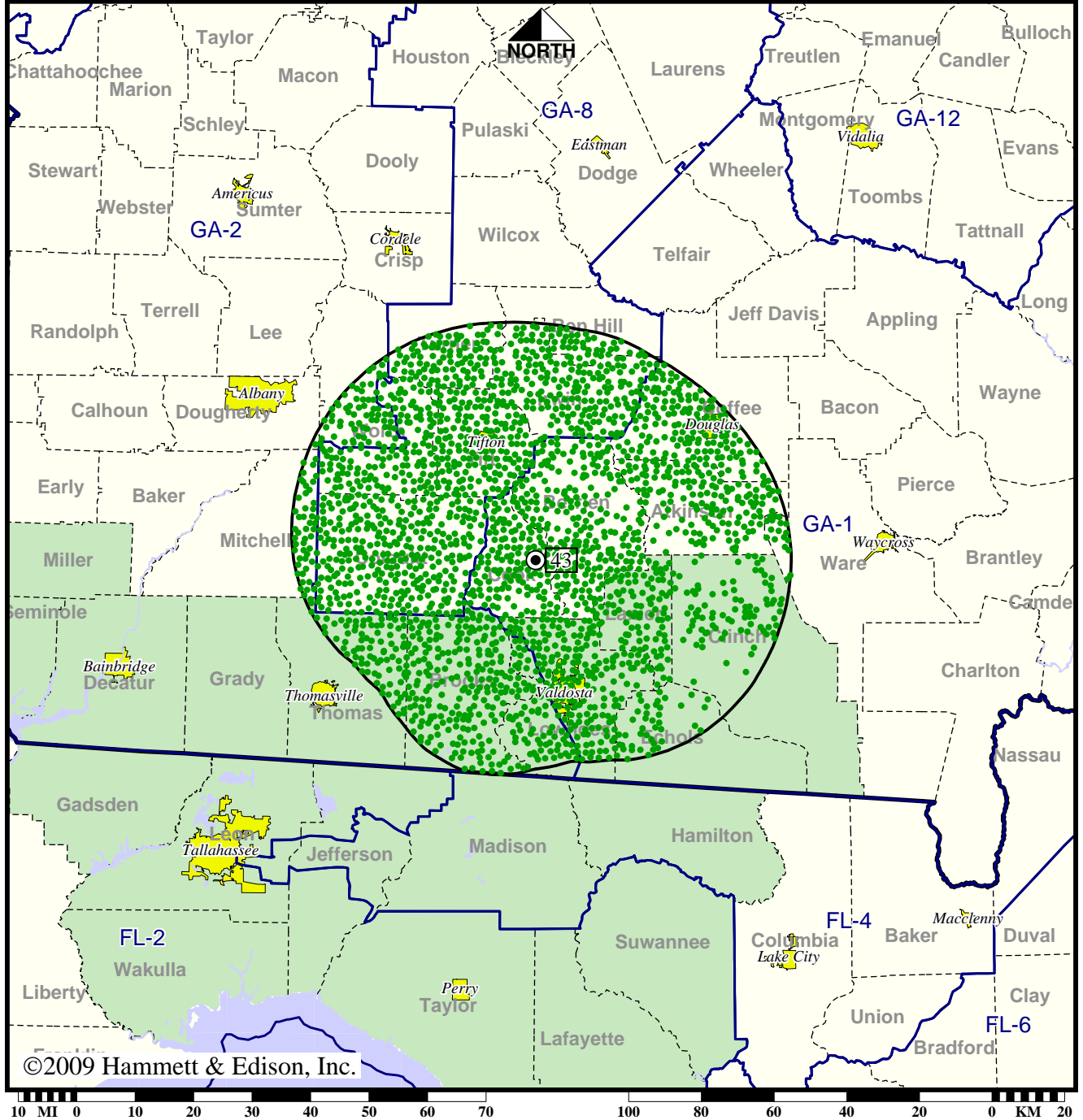
Digital service 328,721 persons

DTV Station WSWG • Channel 43 • Valdosta, GA

Approved Post-Transition Operation: Licensed

Digital License (solid): 50.0 kW ERP at 253 m HAAT, Network: CBS

Market: Tallahassee, FL-Thomasville, GA



©2009 Hammett & Edison, Inc.

● Coverage gained after DTV transition

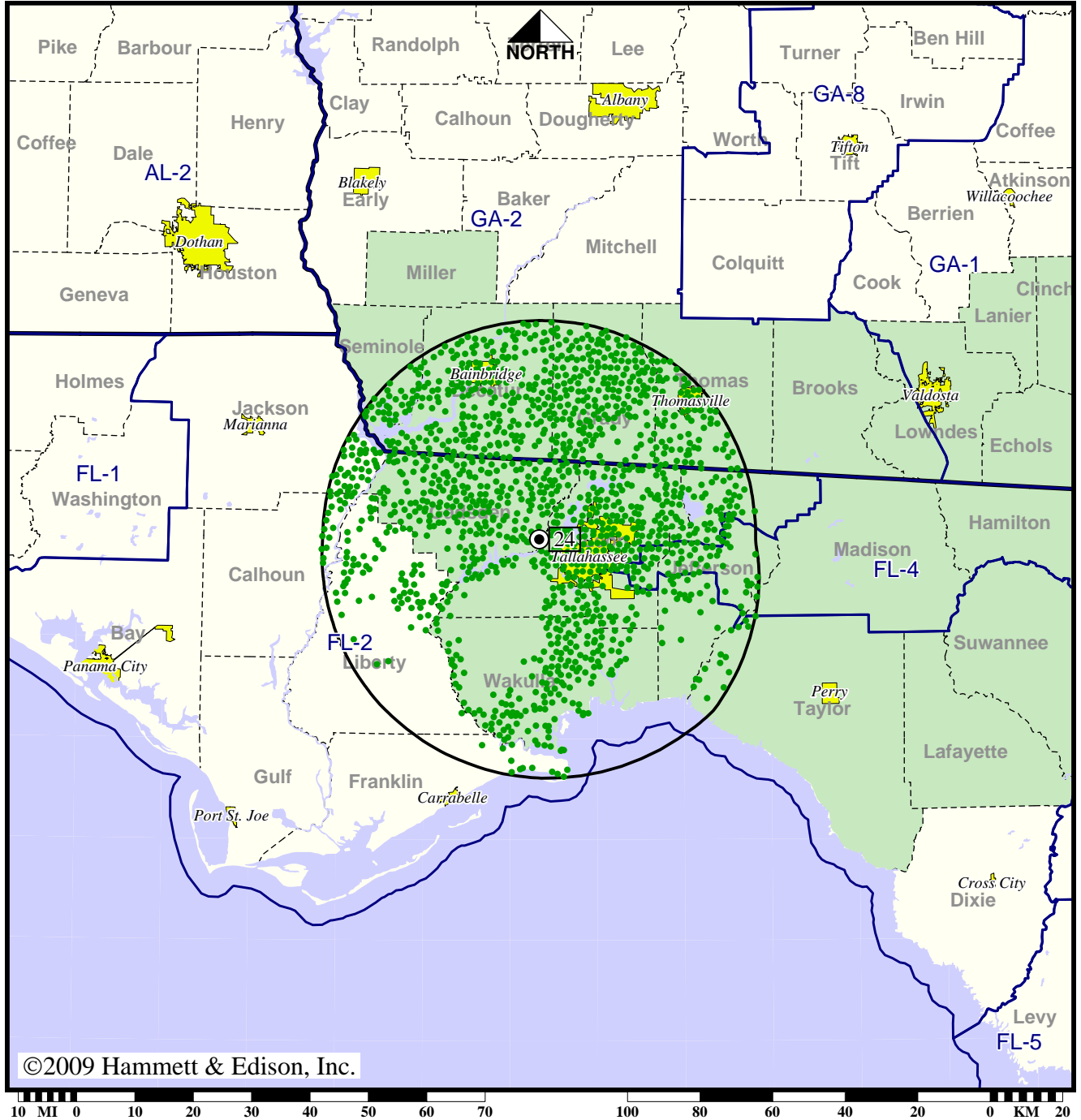
Digital service 328,721 persons

DTV Station WTLF • Channel 24 • Tallahassee, FL

Expected Operation on June 13: Granted Construction Permit

Digital CP (solid): 1000 kW ERP at 39 m HAAT

Market: Tallahassee, FL-Thomasville, GA



● Coverage gained after DTV transition

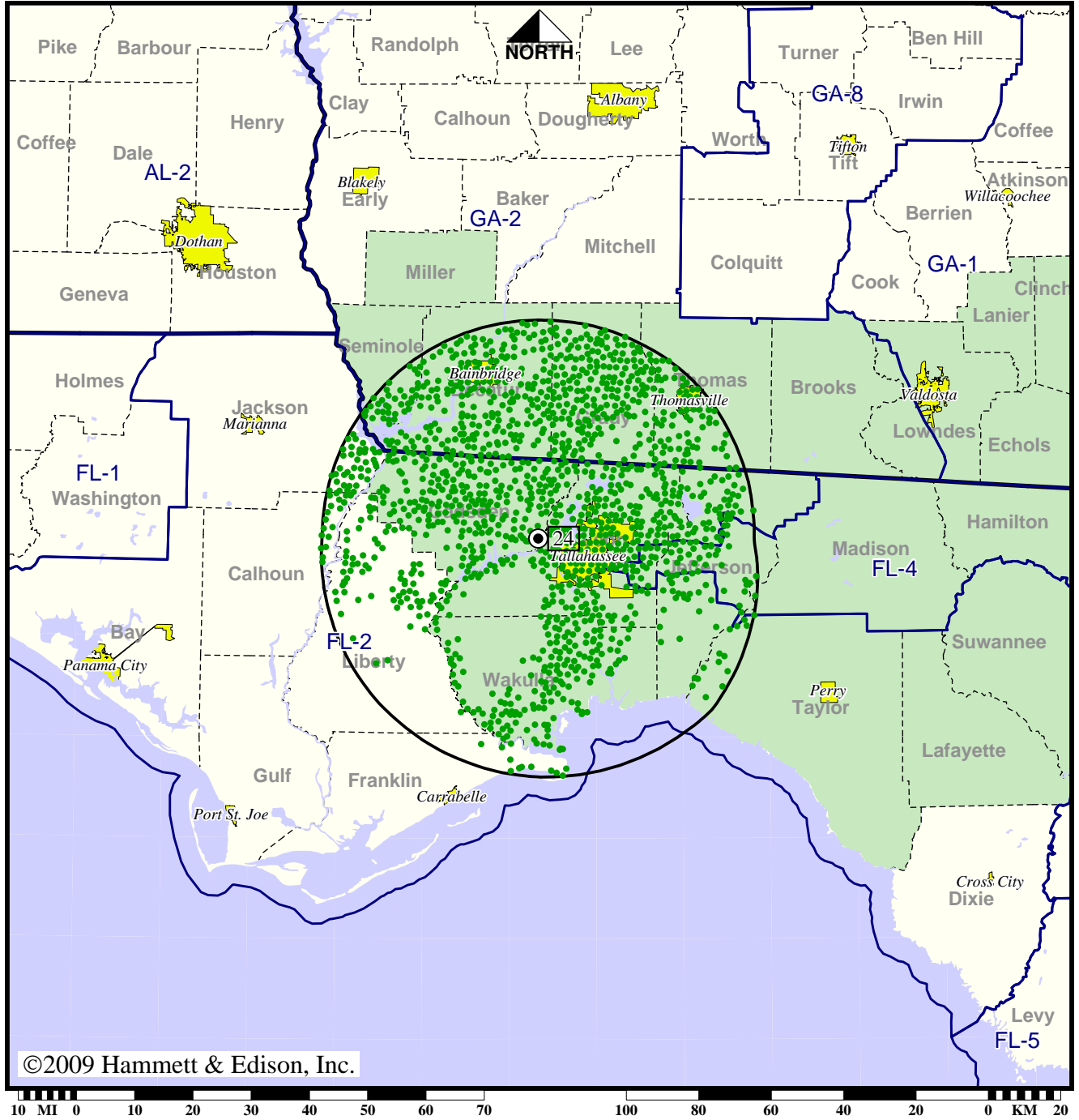
Digital service 406,170 persons

DTV Station WTLF • Channel 24 • Tallahassee, FL

Approved Post-Transition Operation: Granted Construction Permit

Digital CP (solid): 1000 kW ERP at 39 m HAAT

Market: Tallahassee, FL-Thomasville, GA



● Coverage gained after DTV transition

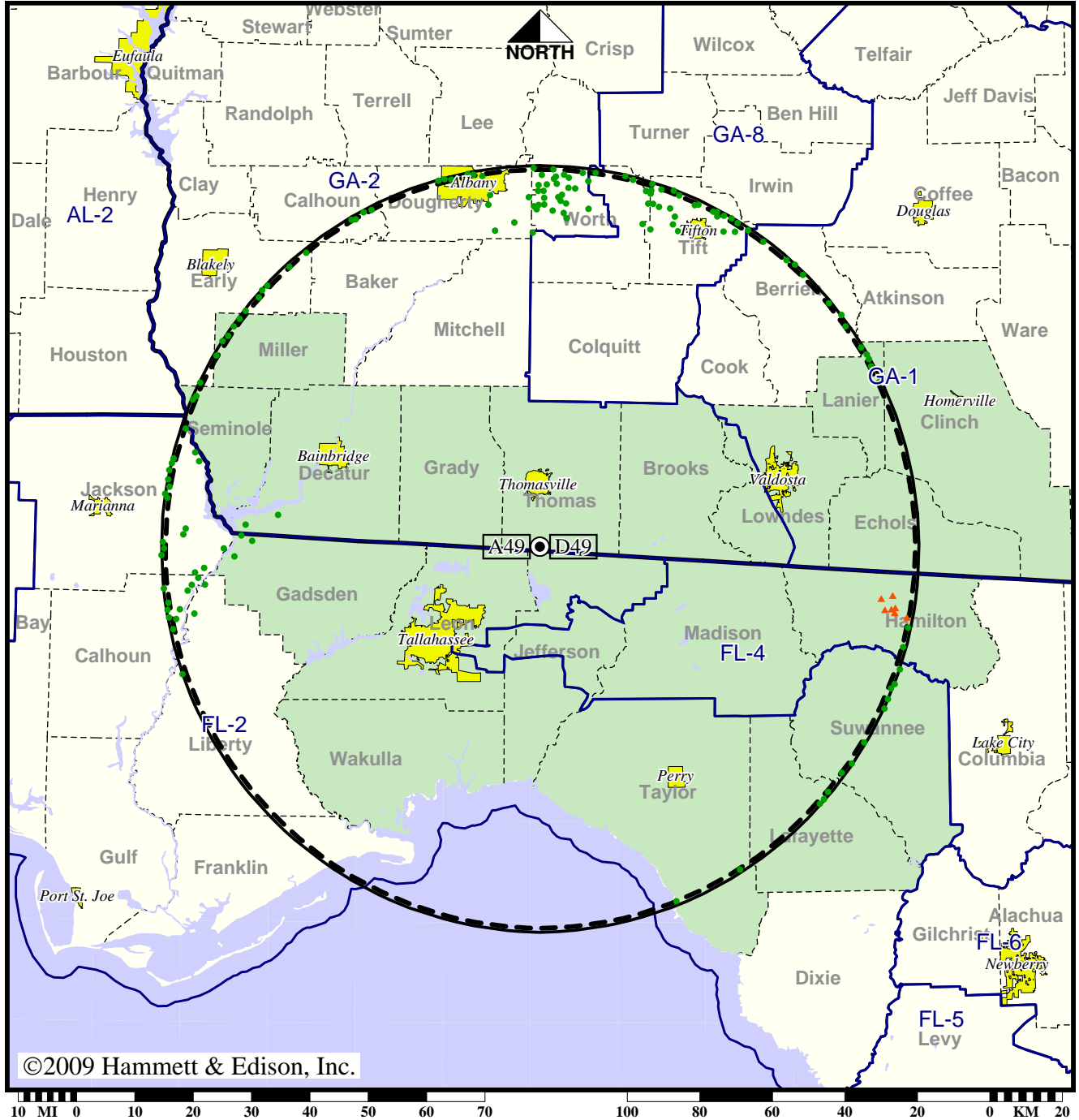
Digital service 405,918 persons

TV Station WTLH • Analog Channel 49, DTV Channel 49 • Bainbridge, GA

Expected Operation on June 13: Appendix B Facility

Digital Appendix B (solid): 226 kW ERP at 597 m HAAT, Network: Fox
 vs. Analog (dashed): 5000 kW ERP at 597 m HAAT, Network: Fox

Market: Tallahassee, FL-Thomasville, GA



- Coverage gained after DTV transition
- No symbol = no change in coverage
- ▲ Coverage lost after DTV transition

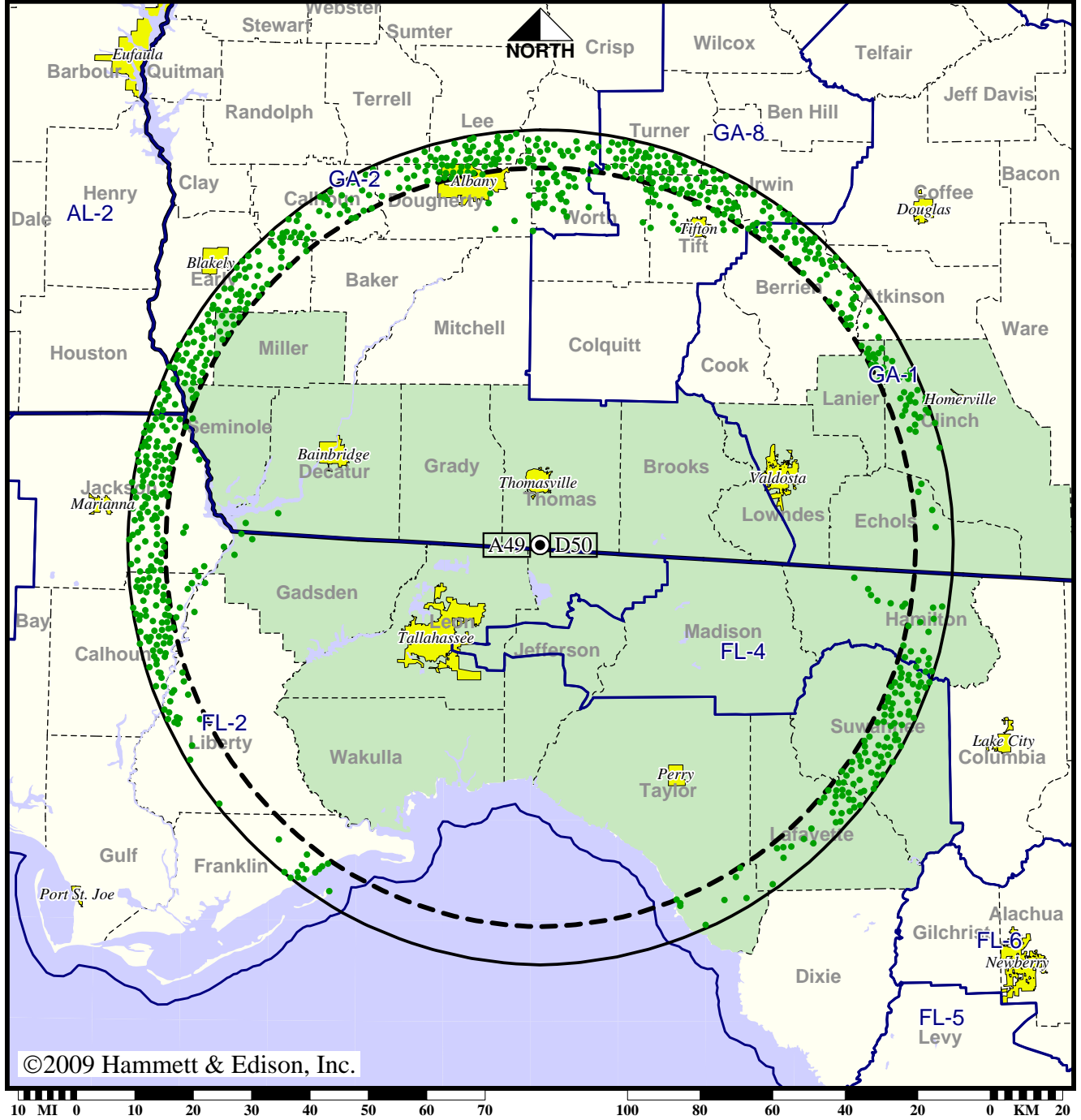
| | |
|-----------------|-----------------|
| Analog service | 850,488 persons |
| Digital service | 872,815 |
| Analog loss | 2,861 |
| Digital gain | 25,188 |
| Net gain | 22,327 |

TV Station WTLH • Analog Channel 49, DTV Channel 50 • Bainbridge, GA

Approved Post-Transition Operation: Granted Construction Permit

Digital CP (solid): 665 kW ERP at 597 m HAAT, Network: Fox
 vs. Analog (dashed): 5000 kW ERP at 597 m HAAT, Network: Fox

Market: Tallahassee, FL-Thomasville, GA



● Coverage gained after DTV transition
 No symbol = no change in coverage

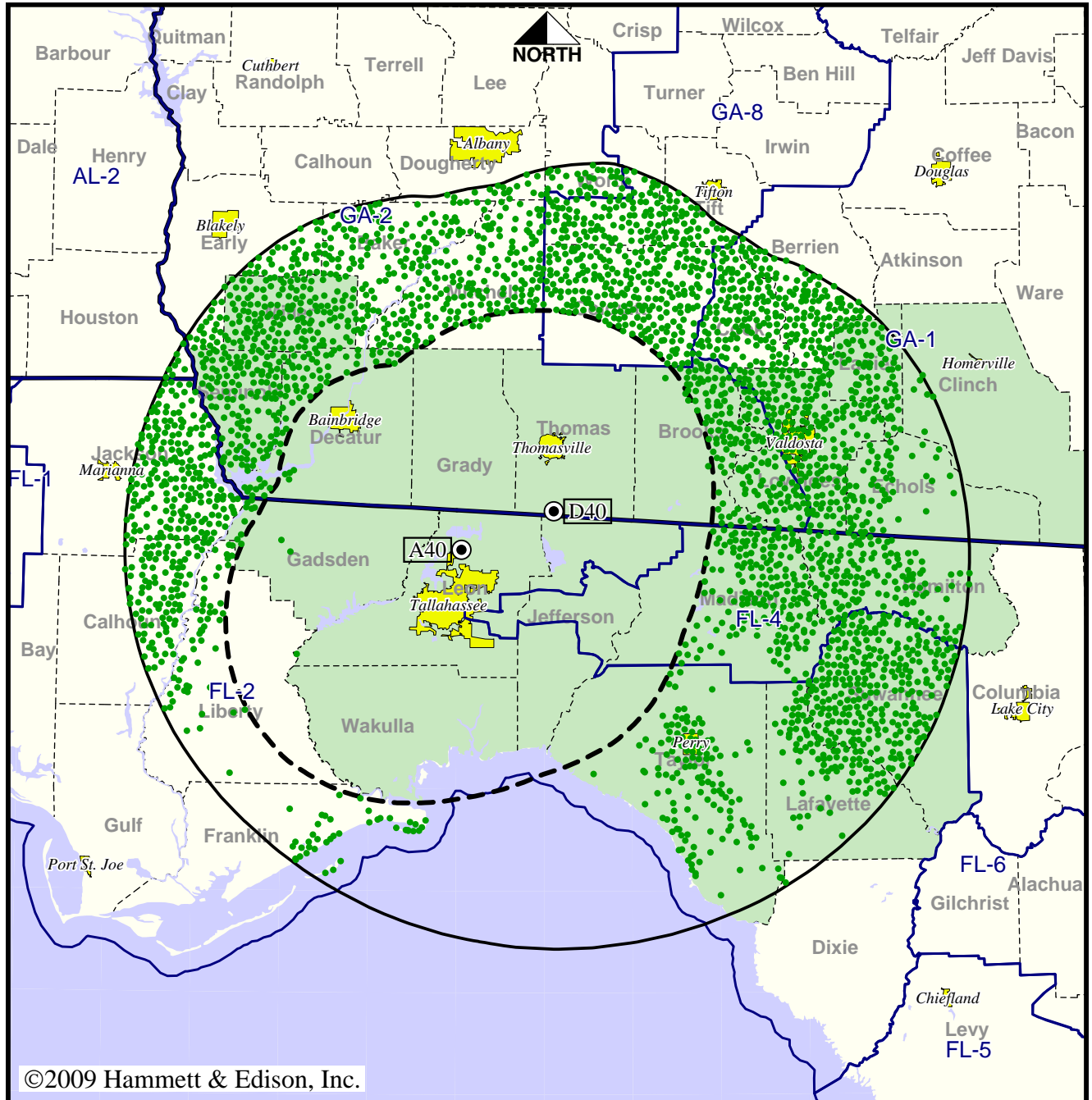
| | |
|-----------------|-----------------|
| Analog service | 850,488 persons |
| Digital service | 948,067 |
| Analog loss | 0 |
| Digital gain | 97,579 |
| Net gain | 97,579 |

Station WTWC-TV • Analog Channel 40, DTV Channel 40 • Tallahassee, FL

Expected Operation on June 13: Granted Construction Permit

Digital CP (solid): 1000 kW ERP at 600 m HAAT, Network: NBC
 vs. Analog (dashed): 3160 kW ERP at 269 m HAAT, Network: NBC

Market: Tallahassee, FL-Thomasville, GA



©2009 Hammett & Edison, Inc.

● Coverage gained after DTV transition
 No symbol = no change in coverage

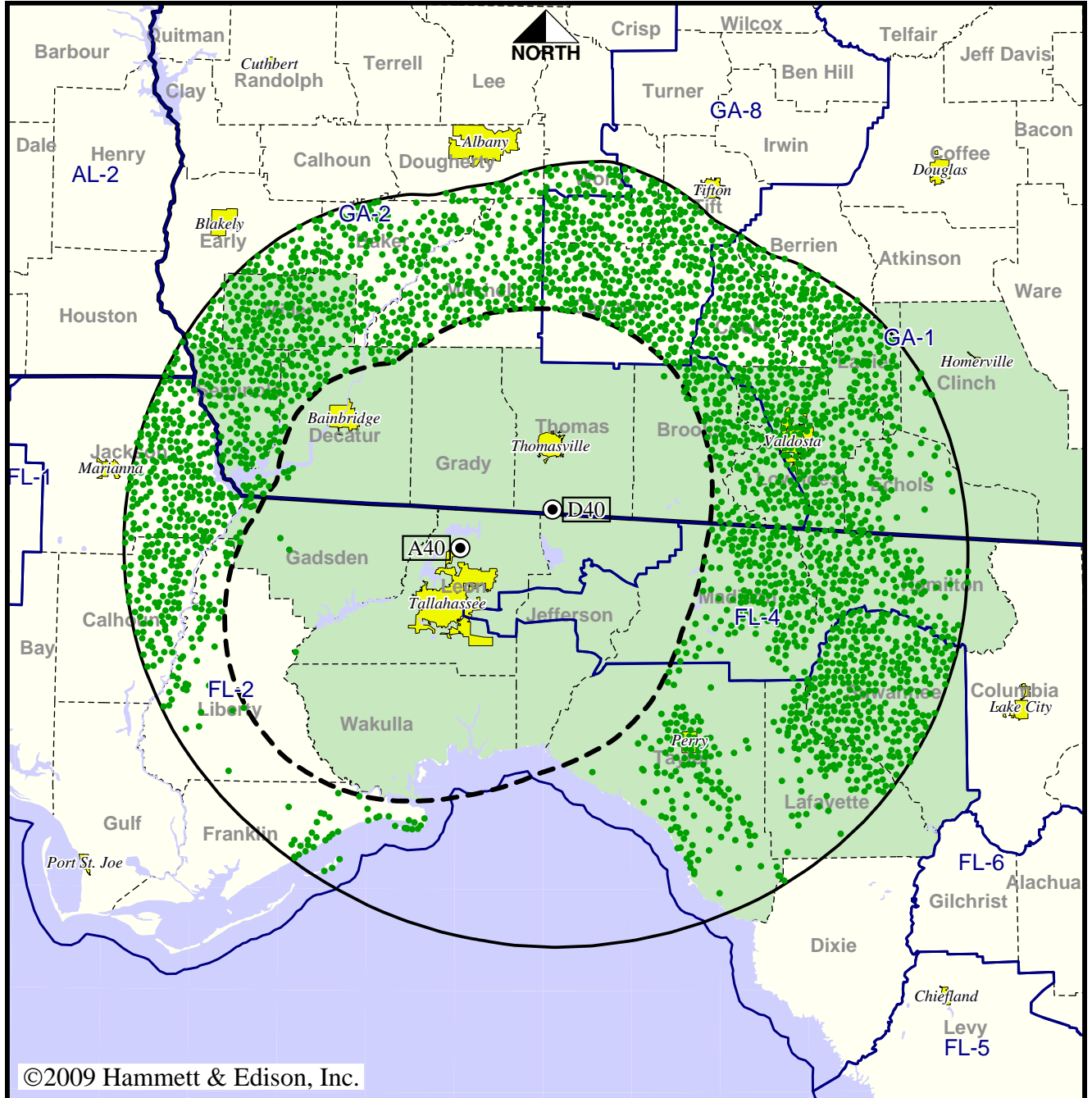
| | |
|-----------------|-----------------|
| Analog service | 436,475 persons |
| Digital service | 784,672 |
| Analog loss | 0 |
| Digital gain | 348,197 |
| Net gain | 348,197 |

Station WTWC-TV • Analog Channel 40, DTV Channel 40 • Tallahassee, FL

Approved Post-Transition Operation: Granted Construction Permit

Digital CP (solid): 1000 kW ERP at 600 m HAAT, Network: NBC
 vs. Analog (dashed): 3160 kW ERP at 269 m HAAT, Network: NBC

Market: Tallahassee, FL-Thomasville, GA



©2009 Hammett & Edison, Inc.

10 MI 0 10 20 30 40 50 60 70 100 80 60 40 20 0 KM 20

- Coverage gained after DTV transition
- No symbol = no change in coverage

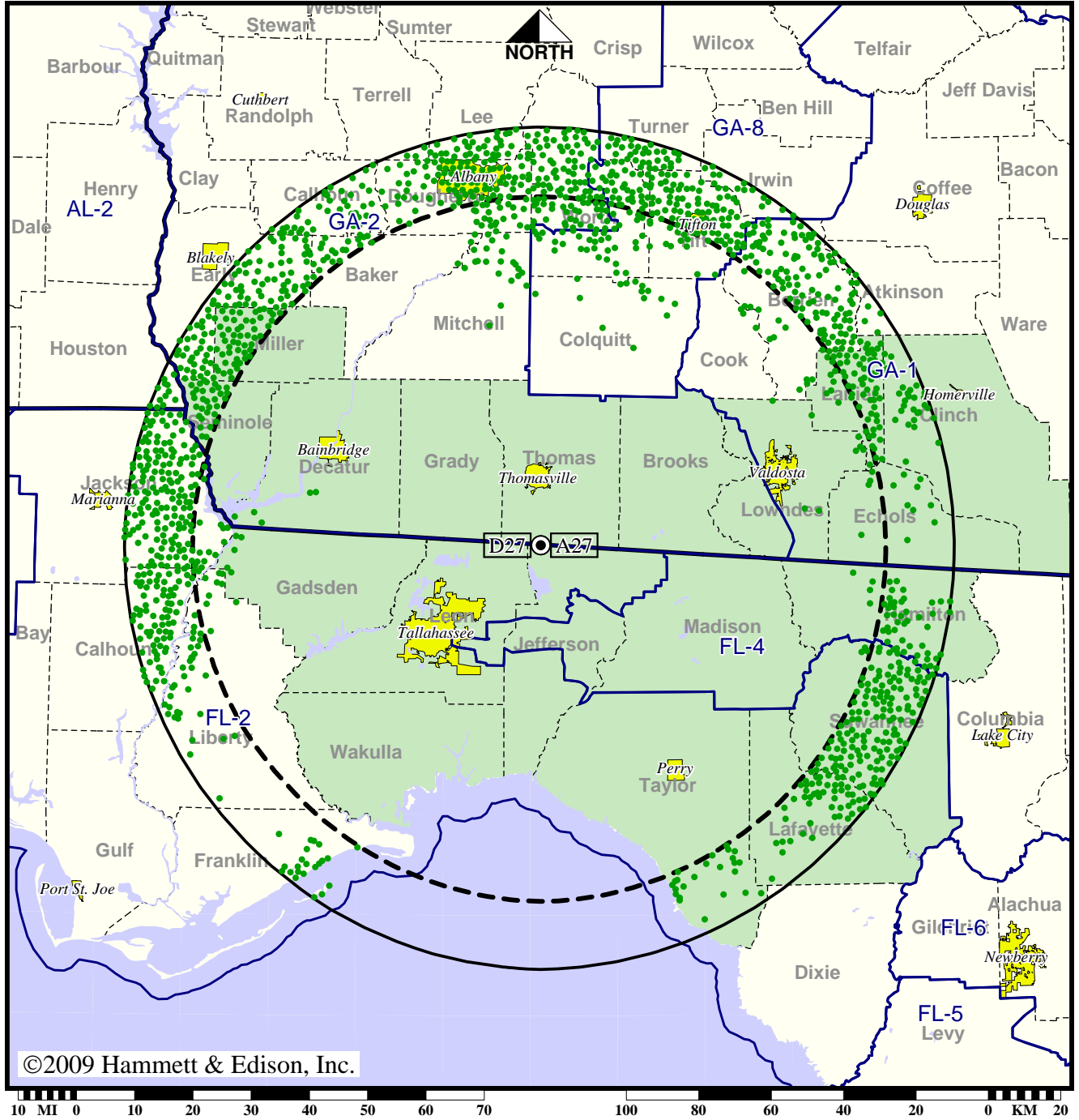
| | |
|-----------------|-----------------|
| Analog service | 436,475 persons |
| Digital service | 784,672 |
| Analog loss | 0 |
| Digital gain | 348,197 |
| Net gain | 348,197 |

Station WTXL-TV • Analog Channel 27, DTV Channel 27 • Tallahassee, FL

Expected Operation on June 13: Granted Construction Permit

Digital CP (solid): 800 kW ERP at 518 m HAAT, Network: ABC
 vs. Analog (dashed): 2690 kW ERP at 518 m HAAT, Network: ABC

Market: Tallahassee, FL-Thomasville, GA



● Coverage gained after DTV transition
 No symbol = no change in coverage

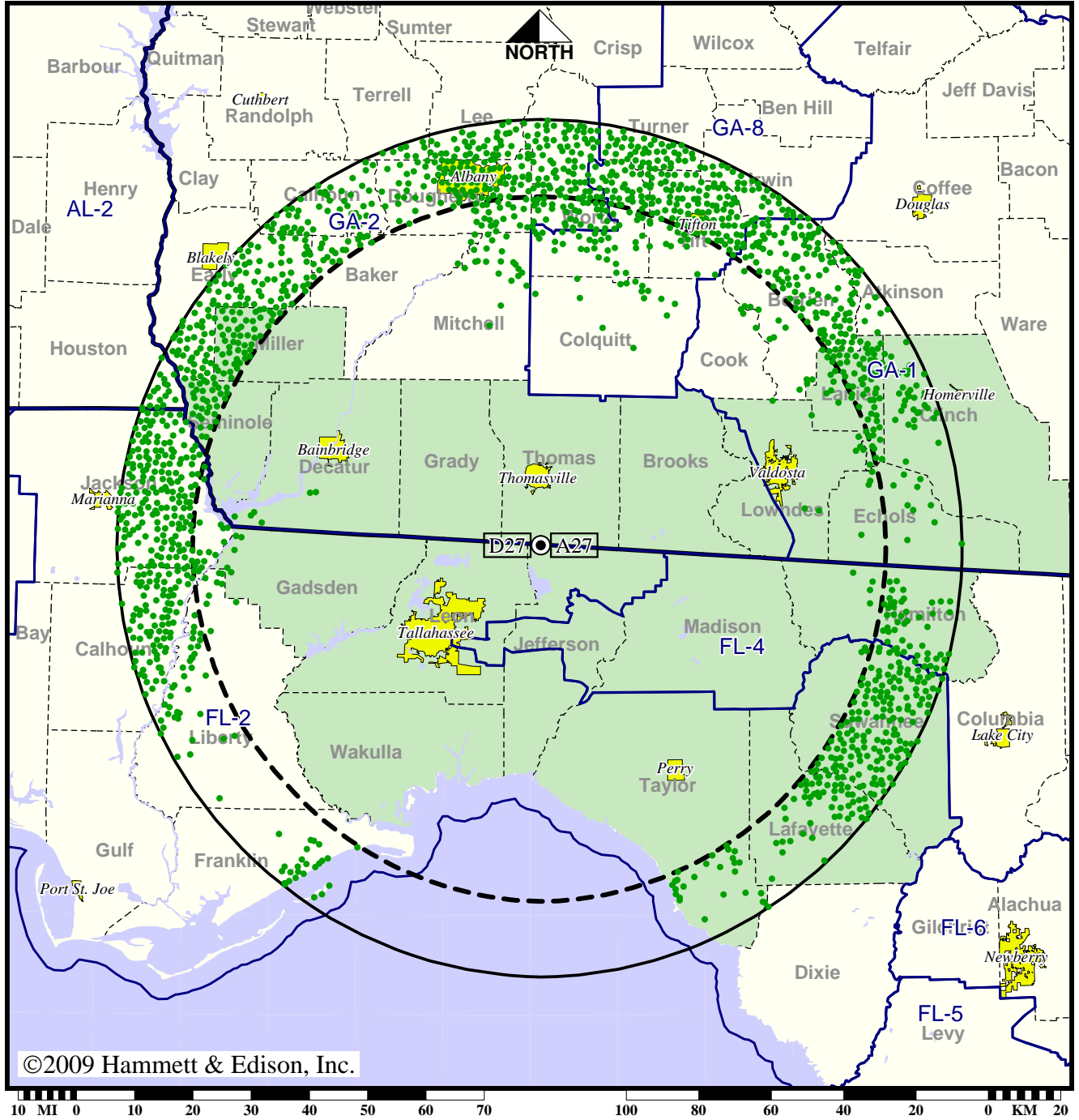
| | |
|-----------------|-----------------|
| Analog service | 698,142 persons |
| Digital service | 947,714 |
| Analog loss | 0 |
| Digital gain | 249,572 |
| Net gain | 249,572 |

Station WTXL-TV • Analog Channel 27, DTV Channel 27 • Tallahassee, FL

Approved Post-Transition Operation: Granted Construction Permit

Digital CP (solid): 1000 kW ERP at 518 m HAAT, Network: ABC
 vs. Analog (dashed): 2690 kW ERP at 518 m HAAT, Network: ABC

Market: Tallahassee, FL-Thomasville, GA



©2009 Hammett & Edison, Inc.

● Coverage gained after DTV transition
 No symbol = no change in coverage

| | |
|-----------------|-----------------|
| Analog service | 698,142 persons |
| Digital service | 958,981 |
| Analog loss | 0 |
| Digital gain | 260,839 |
| Net gain | 260,839 |