

Table 1.4
Age-Adjusted SEER Incidence and U.S. Death Rates and 5-Year Relative Survival (Percent)
By Primary Cancer Site, Sex and Time Period

All Races

Site	Incidence ^a (2005-2009)			US Mortality ^b (2005-2009)			Survival ^c (%) (2002-2008)		
	Total	Males	Females	Total	Males	Females	Total	Males	Females
All Sites	465.2	541.8	412.3	178.7	219.4	151.1	65.4	65.9	64.8
Oral Cavity & Pharynx:	10.8	16.1	6.2	2.5	3.8	1.4	61.5	60.5	63.6
Lip	0.7	1.1	0.3	0.0	0.0	0.0	89.5	89.7	89.0
Tongue	3.1	4.6	1.8	0.6	0.9	0.4	60.5	60.6	60.2
Salivary gland	1.3	1.7	1.0	0.2	0.4	0.1	72.6	65.8	81.3
Floor of mouth	0.6	0.9	0.3	0.0	0.0	0.0	50.3	47.9	56.2
Gum & other oral cavity	1.5	1.8	1.3	0.4	0.4	0.3	59.5	57.1	62.5
Nasopharynx	0.7	0.9	0.4	0.2	0.3	0.1	59.1	58.3	60.9
Tonsil	1.7	2.9	0.6	0.2	0.4	0.1	68.9	69.8	64.9
Oropharynx	0.4	0.6	0.2	0.2	0.3	0.1	39.7	40.6	36.1
Hypopharynx	0.7	1.2	0.3	0.1	0.2	0.0	30.8	30.7	31.2
Other oral cavity & pharynx	0.2	0.3	0.1	0.5	0.8	0.2	32.9	36.4	24.6
Digestive System:	86.3	105.9	70.6	43.2	55.6	33.4	44.4	42.7	46.3
Esophagus	4.5	7.8	1.8	4.3	7.7	1.6	16.9	17.1	16.4
Stomach	7.6	10.5	5.3	3.6	5.0	2.6	26.9	24.9	29.9
Small intestine	2.0	2.4	1.7	0.4	0.4	0.3	63.7	64.1	63.3
Colon & Rectum:	46.3	54.0	40.2	16.7	20.2	14.1	64.3	64.6	64.1
Colon	33.2	37.4	29.9	-	-	-	63.6	64.0	63.2
Rectum	13.1	16.5	10.3	-	-	-	66.2	65.8	66.7
Anus, anal canal & anorectum	1.7	1.5	1.9	0.2	0.2	0.2	65.0	59.9	68.4
Liver & intrahep. bile duct:	7.5	11.6	3.9	5.5	8.1	3.3	15.2	15.1	15.6
Liver	6.9	10.9	3.4	4.2	6.7	2.2	16.0	15.6	17.0
Intrahepatic bile duct	0.6	0.7	0.6	1.2	1.4	1.1	6.6	6.0	7.1
Gallbladder	1.2	0.8	1.4	0.6	0.5	0.8	16.6	14.8	17.3
Other biliary	1.8	2.2	1.5	0.4	0.5	0.4	15.7	16.9	14.4
Pancreas	12.1	13.8	10.8	10.8	12.5	9.5	5.8	5.4	6.1
Retroperitoneum	0.4	0.4	0.4	0.1	0.1	0.1	50.6	48.5	52.6
Peritoneum, omentum & mesentery	0.7	0.1	1.1	0.3	0.1	0.4	29.1	41.0	28.3
Other digestive system	0.5	0.6	0.5	0.3	0.4	0.2	10.5	10.0	11.0
Respiratory System:	67.0	83.8	54.6	52.1	68.2	40.3	19.0	18.4	19.8
Nose, nasal cavity & middle ear	0.7	0.9	0.5	0.2	0.2	0.1	55.2	55.0	55.6
Larynx	3.4	6.2	1.3	1.2	2.1	0.5	60.5	61.4	56.7
Lung & bronchus	62.6	76.4	52.7	50.6	65.7	39.6	15.9	13.8	18.4
Pleura ^d	0.0	0.0	0.0	0.1	0.1	0.0	24.7	17.8	37.0
Trachea & other respiratory organs	0.2	0.3	0.1	0.1	0.1	0.0	48.5	52.2	39.6
Bones & joints	0.9	1.1	0.8	0.4	0.5	0.4	66.6	64.4	69.3
Soft tissue (including heart)	3.3	3.9	2.8	1.3	1.5	1.1	66.1	65.2	67.2
Skin (excl. basal & squamous):	23.0	29.9	18.2	3.6	5.6	2.1	90.7	88.6	93.2
Melanoma of the skin	21.0	27.2	16.7	2.7	4.1	1.7	91.2	89.2	93.6
Other non-epithelial skin	2.0	2.7	1.5	0.9	1.5	0.4	85.0	82.0	88.5
Breast	67.2	1.2	124.3	12.9	0.3	23.0	88.9	85.0	89.0
Breast (<i>in situ</i>)	16.6	0.2	31.4	-	-	-	100.0	100.0	100.0

Note: Incidence and death rates are per 100,000 and are age-adjusted to the 2000 US Std Population (19 age groups - Census P25-1130).

^a SEER 18 areas (San Francisco, Connecticut, Detroit, Hawaii, Iowa, New Mexico, Seattle, Utah, Atlanta, San Jose-Monterey, Los Angeles, Alaska Native Registry, Rural Georgia, California excluding SF/SJM/LA, Kentucky, Louisiana, New Jersey and Georgia excluding ATL/RG).

^b US Mortality Files, National Center for Health Statistics, Centers for Disease Control and Prevention.

^c SEER 18 areas. Based on follow-up of patients into 2009.

^d Mesotheliomas of the Pleura are included in the separate group Mesothelioma for incidence but are included in the Pleura grouping for mortality.

- Statistic could not be calculated due to less than 16 cases in the time interval.

Table 1.4 - continued
 Age-Adjusted SEER Incidence and U.S. Death Rates and 5-Year Relative Survival (Percent)
 By Primary Cancer Site, Sex and Time Period

All Races

Site	Incidence ^a (2005-2009)			US Mortality ^b (2005-2009)			Survival ^c (%) (2002-2008)		
	Total	Males	Females	Total	Males	Females	Total	Males	Females
Female Genital System:	26.1	-	48.7	8.8	-	15.7	67.8	-	67.8
Cervix uteri	4.2	-	8.1	1.3	-	2.4	67.9	-	67.9
Corpus uteri	12.6	-	23.5	1.1	-	1.9	82.7	-	82.7
Uterus, NOS	0.3	-	0.6	1.3	-	2.3	26.2	-	26.2
Ovary ^d	6.9	-	12.7	4.6	-	8.2	43.7	-	43.7
Vagina	0.4	-	0.7	0.1	-	0.2	50.2	-	50.2
Vulva	1.3	-	2.3	0.3	-	0.5	71.5	-	71.5
Other female genital system	0.5	-	0.8	0.1	-	0.2	60.0	-	60.0
Male Genital System:	72.6	161.3	-	9.3	24.0	-	98.9	98.9	-
Prostate	69.4	154.8	-	9.1	23.6	-	99.2	99.2	-
Testis	2.7	5.4	-	0.1	0.2	-	95.2	95.2	-
Penis	0.4	0.8	-	0.1	0.2	-	67.4	67.4	-
Other male genital system	0.1	0.3	-	0.0	0.0	-	89.7	89.7	-
Urinary System:	36.8	59.0	20.0	8.6	13.8	5.0	74.3	75.9	70.8
Urinary bladder	20.8	37.0	8.9	4.4	7.7	2.2	77.7	79.6	72.0
Kidney & renal pelvis	15.1	20.7	10.5	4.0	5.8	2.6	70.6	70.5	70.8
Ureter	0.6	0.8	0.4	0.1	0.2	0.1	49.4	52.5	45.1
Other urinary system	0.3	0.5	0.2	0.1	0.2	0.1	50.7	55.0	44.0
Eye & Orbit	0.8	0.9	0.7	0.1	0.1	0.1	83.1	82.5	83.8
Brain & Nervous System: ^e	6.5	7.7	5.4	4.3	5.2	3.5	33.5	31.7	35.6
Brain	6.1	7.3	5.0	-	-	-	30.2	29.1	31.7
Cranial nerves & other nervous system	0.4	0.4	0.4	-	-	-	78.7	75.0	81.9
Endocrine System:	12.4	6.7	18.0	0.8	0.8	0.8	95.1	89.9	96.8
Thyroid	11.6	5.9	17.3	0.5	0.5	0.5	97.5	94.5	98.3
Other endocrine & thymus	0.7	0.9	0.6	0.3	0.3	0.3	62.3	63.3	61.1
Lymphoma:	22.5	27.0	18.8	7.0	8.9	5.5	70.6	69.1	72.2
Hodgkin lymphoma	2.8	3.2	2.5	0.4	0.5	0.3	84.7	83.7	85.9
Non-Hodgkin lymphoma	19.6	23.8	16.3	6.6	8.4	5.2	68.2	66.6	70.0
Myeloma	5.8	7.4	4.7	3.4	4.4	2.7	41.1	42.1	40.1
Leukemia:	12.5	16.0	9.8	7.1	9.6	5.3	55.0	55.3	54.5
Lymphocytic:	6.2	8.3	4.6	2.0	2.9	1.4	74.9	74.5	75.6
Acute lymphocytic	1.6	1.9	1.4	0.5	0.6	0.4	65.2	64.8	65.7
Chronic lymphocytic	4.2	5.8	3.0	1.4	2.1	0.9	78.8	77.5	80.7
Other lymphocytic	0.4	0.7	0.2	0.1	0.2	0.1	80.8	84.9	69.7
Myeloid & Monocytic:	5.6	6.9	4.6	3.4	4.5	2.6	34.0	33.4	34.8
Acute myeloid	3.6	4.3	3.0	2.8	3.7	2.2	23.4	21.8	25.2
Chronic myeloid	1.6	2.1	1.2	0.3	0.4	0.2	59.1	58.6	59.7
Acute monocytic	0.3	0.3	0.2	0.0	0.0	0.0	24.1	23.9	24.3
Other myeloid & monocytic	0.2	0.2	0.1	0.2	0.3	0.1	31.9	29.9	34.2
Other leukemia:	0.7	0.8	0.6	1.7	2.3	1.3	27.2	27.2	27.2
Other acute leukemia	0.2	0.3	0.2	0.7	0.9	0.5	15.7	16.5	14.7
Aleukemic, subleukemic & NOS	0.4	0.5	0.4	1.0	1.4	0.8	35.6	35.4	35.8
Kaposi Sarcoma ^f	0.6	1.1	0.1	-	-	-	68.5	68.0	72.5
Mesothelioma ^f	1.0	1.9	0.4	-	-	-	7.5	5.7	13.4
Ill-defined & unspecified	9.3	10.8	8.2	13.4	17.0	10.8	16.5	20.4	12.8

Note: Incidence and death rates are per 100,000 and are age-adjusted to the 2000 US Std Population (19 age groups - Census P25-1130).

^a SEER 18 areas (San Francisco, Connecticut, Detroit, Hawaii, Iowa, New Mexico, Seattle, Utah, Atlanta, San Jose-Monterey, Los Angeles, Alaska Native Registry, Rural Georgia, California excluding SF/SJM/LA, Kentucky, Louisiana, New Jersey and Georgia excluding ATL/RG).

^b US Mortality Files, National Center for Health Statistics, Centers for Disease Control and Prevention.

^c SEER 18 areas. Based on follow-up of patients into 2009.

^d Ovary excludes borderline cases or histologies 8442, 8451, 8462, 8472, and 8473.

^e Due to coding changes, Brain & Nervous System mortality are no longer shown separately.

^f Rate not shown for mortality. Category did not exist in mortality coding until 1999.

- Statistic could not be calculated due to less than 16 cases in the time interval.

Table 1.5
Age-Adjusted SEER Incidence and U.S. Death Rates and 5-Year Relative Survival (Percent)
By Primary Cancer Site, Sex and Time Period

Site	Whites								
	Incidence ^a (2005-2009)			US Mortality ^b (2005-2009)			Survival ^c (%) (2002-2008)		
	Total	Males	Females	Total	Males	Females	Total	Males	Females
All Sites	471.7	542.7	423.1	177.6	216.7	150.8	66.0	66.5	65.6
Oral Cavity & Pharynx:	11.0	16.5	6.3	2.4	3.6	1.4	63.3	62.9	64.1
Lip	0.8	1.3	0.4	0.0	0.0	0.0	89.7	90.0	88.7
Tongue	3.3	4.9	1.9	0.6	0.9	0.4	62.7	63.2	61.5
Salivary gland	1.3	1.8	1.0	0.2	0.4	0.1	71.6	64.5	81.5
Floor of mouth	0.6	0.9	0.4	0.0	0.0	0.0	52.0	49.9	57.2
Gum & other oral cavity	1.5	1.8	1.3	0.4	0.4	0.3	60.2	58.4	62.4
Nasopharynx	0.4	0.6	0.3	0.2	0.2	0.1	53.3	54.0	51.3
Tonsil	1.8	3.1	0.6	0.2	0.4	0.1	71.6	72.6	67.0
Oropharynx	0.4	0.6	0.2	0.2	0.3	0.1	43.7	45.1	38.6
Hypopharynx	0.6	1.1	0.3	0.1	0.1	0.0	33.5	33.8	32.7
Other oral cavity & pharynx	0.2	0.3	0.1	0.5	0.8	0.2	34.9	39.1	25.0
Digestive System:	83.3	102.2	67.9	41.6	53.7	32.0	45.2	43.7	47.0
Esophagus	4.6	8.0	1.8	4.4	7.9	1.6	17.9	18.1	17.0
Stomach	6.6	9.3	4.4	3.1	4.3	2.2	25.4	23.6	28.4
Small intestine	2.0	2.4	1.6	0.3	0.4	0.3	64.5	65.6	63.3
Colon & Rectum:	45.4	53.1	39.2	16.2	19.5	13.6	65.0	65.4	64.6
Colon	32.6	36.9	29.1	-	-	-	64.4	64.9	64.0
Rectum	12.8	16.2	10.1	-	-	-	66.5	66.4	66.6
Anus, anal canal & anorectum	1.8	1.5	2.1	0.2	0.2	0.2	66.8	62.0	69.7
Liver & Intrahep. bile duct:	6.5	10.0	3.4	5.0	7.4	3.1	14.6	14.6	14.4
Liver	5.9	9.3	2.8	3.8	6.0	2.0	15.4	15.2	15.8
Intrahepatic bile duct	0.6	0.7	0.5	1.2	1.4	1.1	6.4	6.4	6.3
Gallbladder	1.1	0.8	1.4	0.6	0.4	0.7	16.9	14.5	17.8
Other biliary	1.8	2.2	1.5	0.5	0.5	0.4	15.6	17.1	14.0
Pancreas	12.0	13.7	10.6	10.7	12.4	9.3	5.7	5.4	6.0
Retroperitoneum	0.4	0.4	0.4	0.1	0.1	0.1	50.9	48.2	53.6
Peritoneum, omentum & mesentery	0.7	0.1	1.2	0.3	0.1	0.4	28.7	39.9	28.0
Other digestive system	0.5	0.6	0.4	0.3	0.3	0.2	9.9	9.7	10.0
Respiratory System:	68.5	83.8	57.1	52.6	67.7	41.4	19.3	18.6	20.1
Nose, nasal cavity & middle ear	0.7	0.9	0.5	0.2	0.2	0.1	55.6	56.0	55.1
Larynx	3.5	6.1	1.3	1.1	2.0	0.4	61.4	62.3	57.8
Lung & bronchus	64.1	76.4	55.1	51.2	65.3	40.8	16.3	14.1	18.7
Pleura ^d	0.0	0.0	0.0	0.1	0.1	0.0	22.2	15.2	34.8
Trachea & other respiratory organs	0.2	0.3	0.1	0.1	0.1	0.0	48.6	53.3	36.4
Bones & joints	1.0	1.1	0.8	0.5	0.5	0.4	66.8	64.1	70.1
Soft tissue (including heart)	3.3	4.1	2.8	1.3	1.5	1.1	67.0	66.0	68.2
Skin (excl. basal & squamous):	26.7	34.5	21.3	4.0	6.2	2.4	90.4	88.3	93.0
Melanoma of the skin	24.7	31.6	19.9	3.1	4.6	2.0	90.9	88.9	93.4
Other non-epithelial skin	2.0	2.9	1.4	0.9	1.6	0.4	83.4	80.4	87.1
Breast	68.1	1.2	127.3	12.5	0.3	22.4	90.2	86.5	90.3
Breast (<i>in situ</i>)	16.6	0.1	31.7	-	-	-	100.0	100.0	100.0

Note: Incidence and death rates are per 100,000 and are age-adjusted to the 2000 US Std Population (19 age groups - Census P25-1130).

^a SEER 18 areas (San Francisco, Connecticut, Detroit, Hawaii, Iowa, New Mexico, Seattle, Utah, Atlanta, San Jose-Monterey, Los Angeles, Alaska Native Registry, Rural Georgia, California excluding SF/SJM/LA, Kentucky, Louisiana, New Jersey and Georgia excluding ATL/RG).

^b US Mortality Files, National Center for Health Statistics, Centers for Disease Control and Prevention.

^c SEER 18 areas. Based on follow-up of patients into 2009.

^d Mesotheliomas of the Pleura are included in the separate group Mesothelioma for incidence but are included in the Pleura grouping for mortality.

- Statistic could not be calculated due to less than 16 cases in the time interval.

Table 1.5 - continued
Age-Adjusted SEER Incidence and U.S. Death Rates and 5-Year Relative Survival (Percent)
By Primary Cancer Site, Sex and Time Period

Site	Whites								
	Incidence ^a (2005-2009)			US Mortality ^b (2005-2009)			Survival ^c (%) (2002-2008)		
	Total	Males	Females	Total	Males	Females	Total	Males	Females
Female Genital System:	26.6	-	50.2	8.6	-	15.5	68.9	-	68.9
Cervix uteri	4.0	-	8.0	1.1	-	2.2	69.2	-	69.2
Corpus uteri	12.9	-	24.3	1.0	-	1.8	84.8	-	84.8
Uterus, NOS	0.3	-	0.5	1.2	-	2.1	26.4	-	26.4
Ovary ^d	7.2	-	13.4	4.8	-	8.6	43.5	-	43.5
Vagina	0.4	-	0.7	0.1	-	0.2	50.6	-	50.6
Vulva	1.4	-	2.5	0.3	-	0.5	71.5	-	71.5
Other female genital system	0.5	-	0.9	0.1	-	0.2	60.1	-	60.1
Male Genital System:	70.3	154.4	-	8.6	22.2	-	99.3	99.3	-
Prostate	66.6	146.9	-	8.4	21.7	-	99.6	99.6	-
Testis	3.3	6.4	-	0.1	0.3	-	95.5	95.5	-
Penis	0.4	0.9	-	0.1	0.2	-	65.9	65.9	-
Other male genital system	0.1	0.2	-	0.0	0.0	-	91.8	91.8	-
Urinary System:	38.9	62.6	20.9	8.9	14.3	5.0	74.8	76.3	71.4
Urinary bladder	22.5	40.0	9.6	4.5	8.0	2.2	78.2	79.8	73.1
Kidney & renal pelvis	15.5	21.2	10.7	4.1	5.9	2.7	70.9	70.8	71.0
Ureter	0.6	0.9	0.4	0.1	0.2	0.1	49.2	53.1	43.8
Other urinary system	0.3	0.5	0.1	0.1	0.2	0.1	51.8	54.5	47.2
Eye & Orbit	0.9	1.0	0.8	0.1	0.1	0.1	82.9	82.2	83.4
Brain & Nervous System: ^e	7.1	8.4	5.9	4.6	5.6	3.8	32.3	31.0	34.0
Brain	6.7	8.0	5.5	-	-	-	29.2	28.4	30.2
Cranial nerves & other nervous system	0.4	0.4	0.4	-	-	-	80.4	77.5	83.0
Endocrine System:	12.9	7.0	18.9	0.8	0.8	0.7	95.5	90.6	97.2
Thyroid	12.2	6.2	18.3	0.5	0.5	0.5	97.7	94.7	98.5
Other endocrine & thymus	0.7	0.8	0.6	0.3	0.3	0.3	62.0	63.7	59.9
Lymphoma:	23.5	28.2	19.8	7.2	9.2	5.8	71.1	69.9	72.4
Hodgkin lymphoma	3.0	3.3	2.7	0.4	0.5	0.3	85.2	84.3	86.1
Non-Hodgkin lymphoma	20.5	24.8	17.1	6.8	8.7	5.4	68.8	67.5	70.2
Myeloma	5.3	6.9	4.1	3.2	4.1	2.5	40.9	42.6	38.8
Leukemia:	13.1	16.8	10.2	7.3	9.9	5.5	55.2	55.4	54.9
Lymphocytic:	6.7	8.9	4.9	2.1	3.0	1.5	75.1	74.6	75.9
Acute lymphocytic	1.8	2.0	1.6	0.5	0.6	0.4	64.9	64.4	65.6
Chronic lymphocytic	4.5	6.1	3.2	1.5	2.2	1.0	78.9	77.6	80.9
Other lymphocytic	0.4	0.7	0.2	0.1	0.2	0.1	81.3	85.3	70.7
Myeloid & Monocytic:	5.7	7.1	4.7	3.5	4.6	2.7	33.1	32.4	33.9
Acute myeloid	3.7	4.5	3.1	2.9	3.8	2.3	22.8	21.3	24.6
Chronic myeloid	1.6	2.1	1.2	0.3	0.4	0.2	57.7	57.3	58.2
Acute monocytic	0.3	0.3	0.2	0.0	0.0	0.0	24.3	23.5	25.1
Other myeloid & monocytic	0.2	0.2	0.1	0.2	0.3	0.1	31.3	29.8	32.3
Other leukemia:	0.7	0.8	0.6	1.7	2.3	1.3	25.7	25.3	26.2
Other acute leukemia	0.3	0.3	0.2	0.7	0.9	0.6	14.1	14.2	13.8
Aleukemic, subleukemic & NOS	0.4	0.5	0.4	1.0	1.4	0.8	34.4	34.1	34.7
Kaposi Sarcoma ^f	0.5	1.0	0.1	-	-	-	74.3	73.6	80.0
Mesothelioma ^f	1.2	2.1	0.5	-	-	-	7.2	5.4	13.3
Ill-defined & unspecified	9.5	10.9	8.3	13.4	16.9	10.7	17.0	21.5	12.7

Note: Incidence and death rates are per 100,000 and are age-adjusted to the 2000 US Std Population (19 age groups - Census P25-1130).

^a SEER 18 areas (San Francisco, Connecticut, Detroit, Hawaii, Iowa, New Mexico, Seattle, Utah, Atlanta, San Jose-Monterey, Los Angeles, Alaska Native Registry, Rural Georgia, California excluding SF/SJM/LA, Kentucky, Louisiana, New Jersey and Georgia excluding ATL/RG).

^b US Mortality Files, National Center for Health Statistics, Centers for Disease Control and Prevention.

^c SEER 18 areas. Based on follow-up of patients into 2009.

^d Ovary excludes borderline cases or histologies 8442, 8451, 8462, 8472, and 8473.

^e Due to coding changes, Brain & Nervous System mortality are no longer shown separately.

^f Rate not shown for mortality. Category did not exist in mortality coding until 1999.

- Statistic could not be calculated due to less than 16 cases in the time interval.

Table 1.6
Age-Adjusted SEER Incidence and U.S. Death Rates and 5-Year Relative Survival (Percent)
By Primary Cancer Site, Sex and Time Period

Site	Blacks								
	Incidence ^a (2005-2009)			US Mortality ^b (2005-2009)			Survival ^c (%) (2002-2008)		
	Total	Males	Females	Total	Males	Females	Total	Males	Females
All Sites	489.5	627.1	398.3	216.4	288.3	174.6	58.3	61.4	54.8
Oral Cavity & Pharynx:	9.8	15.4	5.6	3.2	5.7	1.4	42.1	37.2	53.0
Lip	0.1	0.1	0.1	-	-	-	83.1	72.0	93.2
Tongue	2.2	3.6	1.2	0.6	1.1	0.3	32.7	29.9	38.7
Salivary gland	1.0	1.1	1.0	0.2	0.2	0.1	73.6	67.1	78.8
Floor of mouth	0.6	1.0	0.3	0.0	0.1	-	36.9	33.3	47.2
Gum & other oral cavity	1.4	1.7	1.2	0.4	0.6	0.2	51.6	41.7	63.9
Nasopharynx	0.7	1.2	0.4	0.3	0.5	0.1	55.9	53.7	59.9
Tonsil	1.7	3.0	0.6	0.3	0.5	0.1	45.9	45.6	46.9
Oropharynx	0.6	1.1	0.3	0.4	0.7	0.1	19.8	19.7	19.8
Hypopharynx	1.1	2.1	0.3	0.2	0.3	0.0	18.3	17.0	23.8
Other oral cavity & pharynx	0.3	0.5	0.2	0.9	1.7	0.3	21.0	21.9	16.7
Digestive System:	108.5	135.5	89.7	59.1	78.4	45.9	38.7	35.5	41.9
Esophagus	5.3	8.9	2.8	4.6	8.2	2.2	11.1	10.4	12.6
Stomach	11.9	17.0	8.7	6.9	10.3	4.8	26.5	22.9	31.1
Small intestine	3.1	3.6	2.8	0.6	0.7	0.5	60.7	57.1	63.9
Colon & Rectum:	57.0	66.9	50.3	23.7	29.8	19.8	56.8	55.9	57.6
Colon	42.9	49.4	38.7	-	-	-	56.1	55.9	56.3
Rectum	14.0	17.5	11.6	-	-	-	58.9	56.1	61.7
Anus, anal canal & anorectum	1.7	1.8	1.6	0.2	0.2	0.2	52.6	46.0	58.8
Liver & Intrahep. bile duct:	9.0	14.9	4.4	7.3	11.9	4.0	10.7	8.5	15.9
Liver	8.5	14.4	4.0	6.2	10.5	3.0	10.9	8.7	16.8
Intrahepatic bile duct	0.5	0.5	0.5	1.1	1.3	1.0	7.9	0.0	9.7
Gallbladder	1.5	1.3	1.7	0.8	0.7	1.0	13.8	15.8	13.0
Other biliary	1.7	2.1	1.5	0.4	0.4	0.3	13.3	14.1	12.7
Pancreas	15.8	17.7	14.4	13.8	15.5	12.6	5.0	4.6	5.4
Retroperitoneum	0.4	0.3	0.4	0.1	0.1	0.1	44.2	40.7	46.3
Peritoneum, omentum & mesentery	0.4	0.1	0.5	0.2	0.1	0.2	31.6	54.9	27.5
Other digestive system	0.7	0.8	0.6	0.4	0.5	0.3	14.3	13.5	14.8
Respiratory System:	77.4	111.0	55.0	57.8	87.2	38.9	16.7	16.9	16.4
Nose, nasal cavity & middle ear	0.7	1.0	0.5	0.2	0.3	0.1	48.8	47.8	50.3
Larynx	5.2	9.9	1.8	2.1	4.2	0.7	54.0	55.3	48.7
Lung & bronchus	71.3	99.9	52.6	55.4	82.6	38.0	13.0	11.8	14.6
Pleura ^d	-	-	-	0.0	0.1	0.0	-	-	-
Trachea & other respiratory organs	0.2	0.2	0.1	0.1	0.1	0.0	50.5	48.0	53.7
Bones & joints	0.8	0.9	0.7	0.4	0.6	0.4	64.0	61.7	66.6
Soft tissue (including heart)	3.2	3.5	3.0	1.4	1.4	1.4	60.2	59.1	61.3
Skin (excl. basal & squamous):	2.1	2.2	2.1	0.9	1.4	0.6	83.5	80.6	85.4
Melanoma of the skin	1.0	1.1	0.9	0.4	0.5	0.4	72.0	62.5	78.5
Other non-epithelial skin	1.1	1.1	1.2	0.5	0.8	0.2	91.3	92.9	90.0
Breast	69.7	1.7	121.2	18.8	0.5	31.6	77.6	71.3	77.7
Breast (<i>in situ</i>)	16.7	0.3	29.4	-	-	-	100.0	96.7	100.0

Note: Incidence and death rates are per 100,000 and are age-adjusted to the 2000 US Std Population (19 age groups - Census P25-1130).

^a SEER 18 areas (San Francisco, Connecticut, Detroit, Hawaii, Iowa, New Mexico, Seattle, Utah, Atlanta, San Jose-Monterey, Los Angeles, Alaska Native Registry, Rural Georgia, California excluding SF/SJM/LA, Kentucky, Louisiana, New Jersey and Georgia excluding ATL/RG).

^b US Mortality Files, National Center for Health Statistics, Centers for Disease Control and Prevention.

^c SEER 18 areas. Based on follow-up of patients into 2009.

^d Mesotheliomas of the Pleura are included in the separate group Mesothelioma for incidence but are included in the Pleura grouping for mortality.

- Statistic could not be calculated due to less than 16 cases in the time interval.

Table 1.6 - continued
Age-Adjusted SEER Incidence and U.S. Death Rates and 5-Year Relative Survival (Percent)
By Primary Cancer Site, Sex and Time Period

Site	Blacks								
	Incidence ^a (2005-2009)			US Mortality ^b (2005-2009)			Survival ^c (%) (2002-2008)		
	Total	Males	Females	Total	Males	Females	Total	Males	Females
Female Genital System:	25.7	-	44.9	11.5	-	19.3	53.9	-	53.9
Cervix uteri	5.4	-	9.8	2.5	-	4.3	58.5	-	58.5
Corpus uteri	11.8	-	20.6	1.8	-	3.0	61.3	-	61.3
Uterus, NOS	0.7	-	1.2	2.6	-	4.3	24.8	-	24.8
Ovary ^d	5.7	-	9.8	4.1	-	6.8	36.0	-	36.0
Vagina	0.6	-	1.0	0.2	-	0.3	47.1	-	47.1
Vulva	1.0	-	1.8	0.2	-	0.3	65.5	-	65.5
Other female genital system	0.4	-	0.7	0.1	-	0.2	53.3	-	53.3
Male Genital System:	99.1	238.4	-	18.6	53.6	-	96.0	96.0	-
Prostate	98.0	236.0	-	18.4	53.1	-	96.2	96.2	-
Testis	0.6	1.3	-	0.1	0.1	-	89.1	89.1	-
Penis	0.4	0.9	-	0.1	0.3	-	64.0	64.0	-
Other male genital system	0.1	0.2	-	0.0	0.0	-	75.2	75.2	-
Urinary System:	30.5	46.5	19.6	7.9	11.8	5.5	66.0	68.5	62.2
Urinary bladder	12.6	21.2	7.1	3.7	5.6	2.6	64.2	69.7	54.3
Kidney & renal pelvis	17.2	24.3	12.0	4.0	6.0	2.6	68.1	68.1	68.1
Ureter	0.3	0.4	0.3	0.1	0.1	0.1	44.8	47.9	40.1
Other urinary system	0.4	0.6	0.3	0.1	0.1	0.2	35.6	43.0	29.4
Eye & Orbit	0.2	0.3	0.1	0.0	0.0	0.0	78.9	75.9	82.5
Brain & Nervous System: ^e	4.0	4.7	3.6	2.5	3.1	2.1	39.3	33.2	45.5
Brain	3.7	4.3	3.2	-	-	-	35.4	30.4	40.8
Cranial nerves & other nervous system	0.4	0.3	0.4	-	-	-	71.1	62.7	76.2
Endocrine System:	7.9	4.4	10.9	0.9	0.8	0.9	91.2	82.5	93.6
Thyroid	6.9	3.3	10.1	0.5	0.4	0.6	95.3	90.1	96.4
Other endocrine & thymus	0.9	1.0	0.9	0.4	0.4	0.3	62.6	63.0	62.2
Lymphoma:	17.0	20.6	14.2	5.0	6.6	3.9	65.0	60.9	69.7
Hodgkin lymphoma	2.7	3.1	2.4	0.4	0.5	0.3	80.7	77.5	83.8
Non-Hodgkin lymphoma	14.3	17.5	11.8	4.6	6.1	3.6	61.3	57.0	66.2
Myeloma	11.7	14.3	10.1	6.4	8.0	5.4	41.0	39.5	42.4
Leukemia:	9.7	12.5	7.8	6.2	8.5	4.8	48.0	49.0	46.8
Lymphocytic:	4.0	5.8	2.8	1.8	2.7	1.2	64.9	64.1	66.0
Acute lymphocytic	0.9	1.2	0.7	0.3	0.4	0.2	62.4	62.7	62.1
Chronic lymphocytic	2.9	4.3	2.0	1.3	2.1	0.9	66.1	64.0	69.1
Other lymphocytic	0.2	0.4	0.1	0.1	0.2	0.1	60.9	70.8	37.4
Myeloid & Monocytic:	4.8	5.7	4.3	2.7	3.5	2.3	36.0	36.0	36.0
Acute myeloid	3.0	3.5	2.8	2.2	2.7	1.9	24.0	23.2	24.8
Chronic myeloid	1.5	1.9	1.2	0.4	0.5	0.3	60.5	59.2	61.9
Acute monocytic	0.2	0.2	0.1	0.0	-	-	20.3	21.3	20.1
Other myeloid & monocytic	0.1	0.1	0.1	0.1	0.2	0.1	36.3	36.0	35.3
Other leukemia:	0.8	0.9	0.7	1.7	2.3	1.4	26.9	28.7	24.6
Other acute leukemia	0.2	0.3	0.2	0.5	0.7	0.4	19.4	21.7	17.4
Aleukemic, subleukemic & NOS	0.6	0.6	0.5	1.2	1.6	0.9	31.2	33.0	28.5
Kaposi Sarcoma ^f	1.1	2.1	0.2	-	-	-	49.4	49.3	47.5
Mesothelioma ^f	0.6	1.1	0.3	-	-	-	10.5	10.0	12.4
Ill-defined & unspecified	10.5	12.2	9.3	15.7	20.8	12.5	12.0	12.6	11.5

Note: Incidence and death rates are per 100,000 and are age-adjusted to the 2000 US Std Population (19 age groups - Census P25-1130).

^a SEER 18 areas (San Francisco, Connecticut, Detroit, Hawaii, Iowa, New Mexico, Seattle, Utah, Atlanta, San Jose-Monterey, Los Angeles, Alaska Native Registry, Rural Georgia, California excluding SF/SJM/LA, Kentucky, Louisiana, New Jersey and Georgia excluding ATL/RG).

^b US Mortality Files, National Center for Health Statistics, Centers for Disease Control and Prevention.

^c SEER 18 areas. Based on follow-up of patients into 2009.

^d Ovary excludes borderline cases or histologies 8442, 8451, 8462, 8472, and 8473.

^e Due to coding changes, Brain & Nervous System mortality are no longer shown separately.

^f Rate not shown for mortality. Category did not exist in mortality coding until 1999.

- Statistic could not be calculated due to less than 16 cases in the time interval.

SEER Incidence^a and US Death Rates,^b 2005-2009 5-Year Relative Survival,^c 2002-2008 All Cancer Combined, by Race and Sex

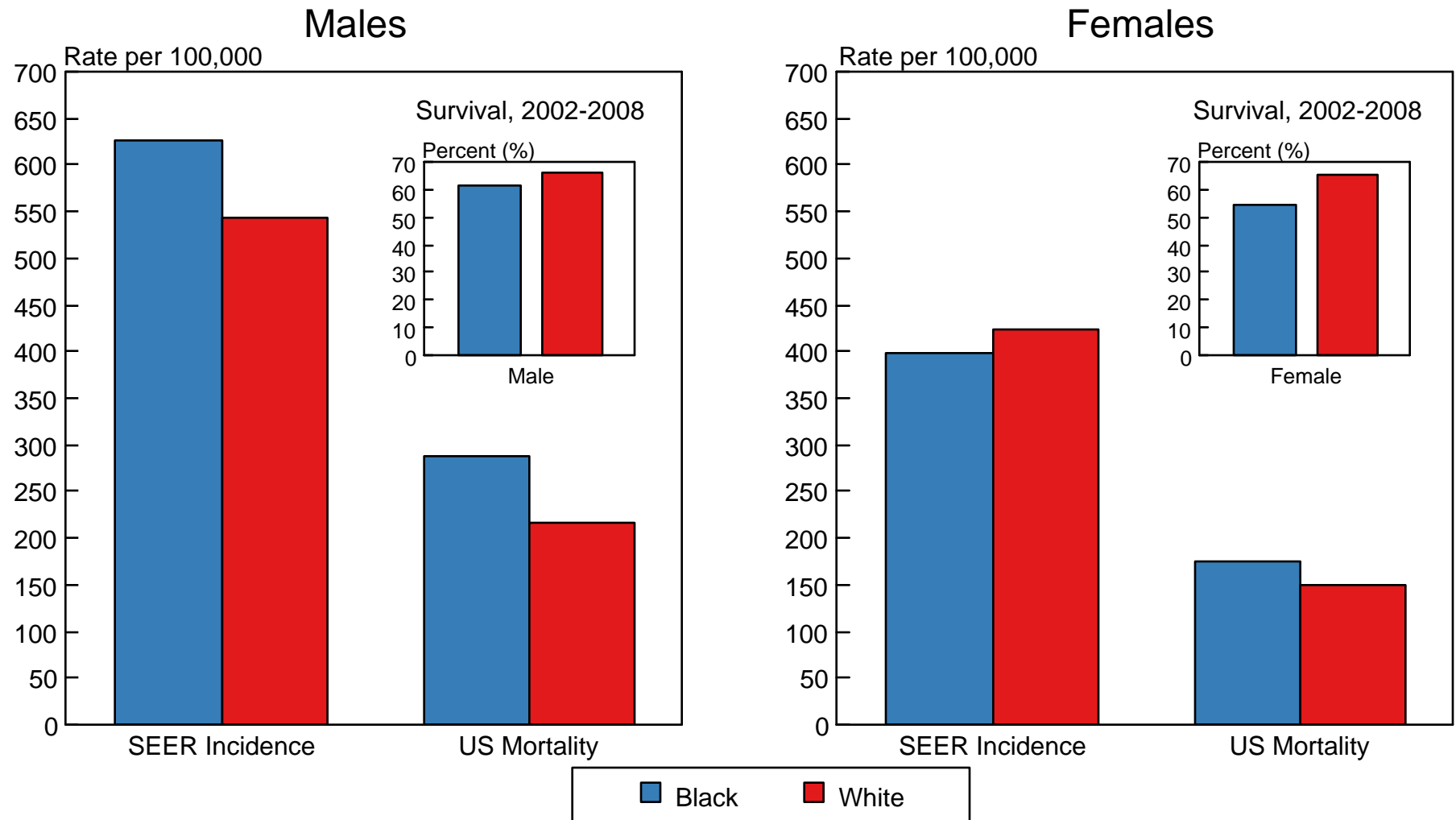
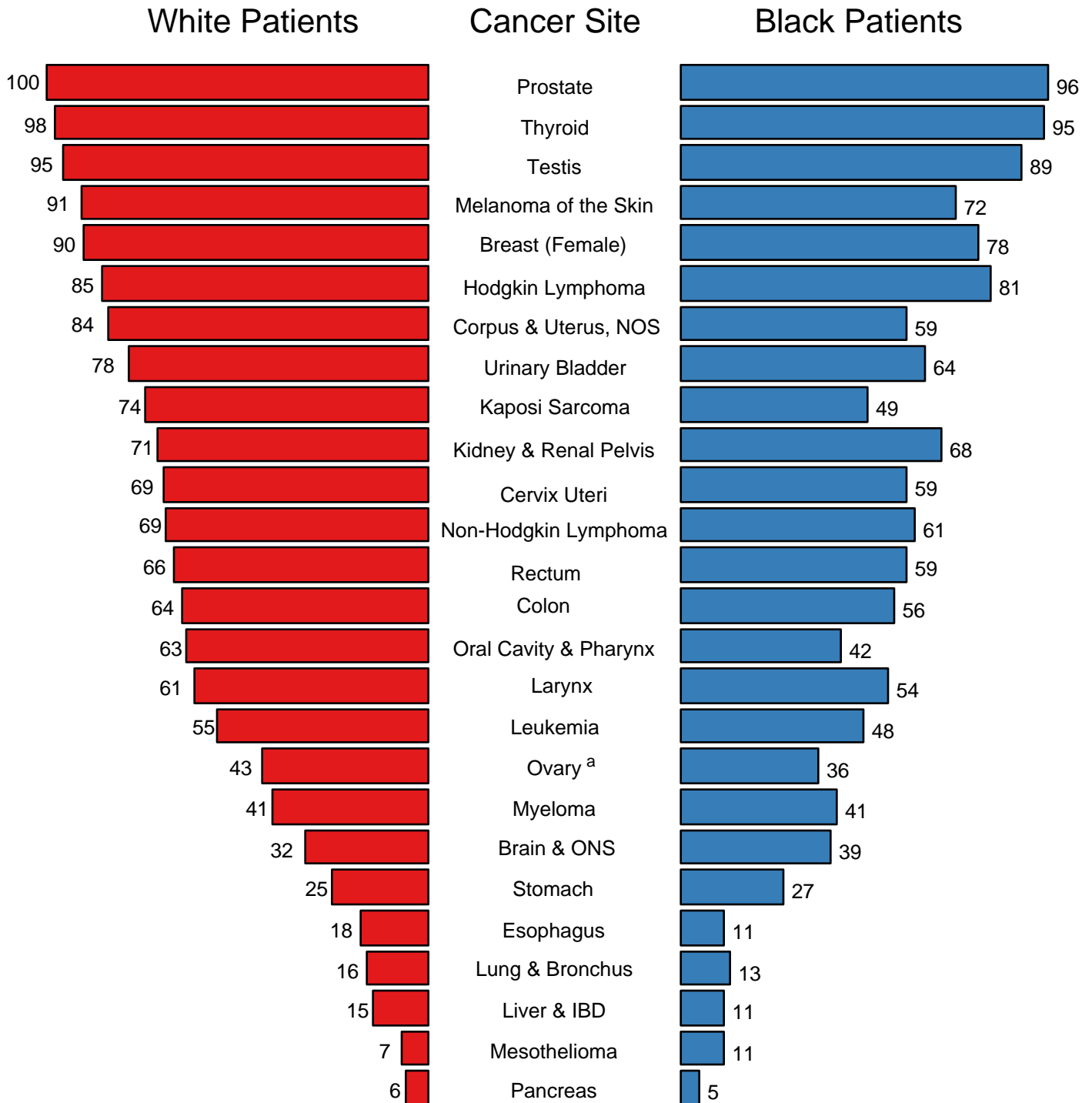


Figure 1.9

- ^a Incidence rates are from the SEER 18 areas (San Francisco, Connecticut, Detroit, Hawaii, Iowa, New Mexico, Seattle, Utah, Atlanta, San Jose-Monterey, Los Angeles, Alaska Native Registry, Rural Georgia, California excluding SF/SJM/LA, Kentucky, Louisiana, New Jersey and Georgia excluding ATL/RG) and are age-adjusted to the 2000 US Std Population (19 age groups - Census P25-1103).
- ^b Death rates are from the US Mortality Files, National Center for Health Statistics, Centers for Disease Control and Prevention and are age-adjusted to the 2000 US Std Population (19 age groups - Census P25-1103).
- ^c Survival rates are from the SEER 18 areas (San Francisco, Connecticut, Detroit, Hawaii, Iowa, New Mexico, Seattle, Utah, Atlanta, San Jose-Monterey, Los Angeles, Alaska Native Registry, Rural Georgia, California excluding SF/SJM/LA, Kentucky, Louisiana, New Jersey and Greater Georgia).

Figure 1.11

5-Year Relative Survival (%) SEER Program, 2002-2008 Both Sexes, by Race and Cancer Site



Source: SEER 18 areas (San Francisco, Connecticut, Detroit, Hawaii, Iowa, New Mexico, Seattle, Utah, Atlanta, San Jose-Monterey, Los Angeles, Alaska Native Registry, Rural Georgia, California excluding SF/SJM/LA, Kentucky, Louisiana, New Jersey and Georgia excluding ATL/RG).

^a Ovary excludes borderline cases or histologies 8442, 8451, 8462, 8472, and 8473.

Table 2.8
All Cancer Sites (Invasive)

5-Year Relative and Period Survival (Percent) by Race, Sex, Diagnosis Year and Age

	All Races			Whites			Blacks		
	Total	Males	Females	Total	Males	Females	Total	Males	Females
5-Year Relative Survival (Percent)									
Year of Diagnosis:									
1960-1963 ^a	-	-	-	39	-	-	27	-	-
1970-1973 ^a	-	-	-	43	-	-	31	-	-
1975-1977 ^b	49.1	42.0	56.0	50.0	42.9	56.7	39.2	32.9	46.4
1978-1980 ^b	49.2	43.3	55.1	50.1	44.5	55.7	39.0	33.4	45.7
1981-1983 ^b	50.4	45.4	55.3	51.5	46.8	56.2	39.0	34.3	44.6
1984-1986 ^b	52.5	47.3	57.7	53.8	48.8	58.7	40.2	35.6	45.5
1987-1989 ^b	55.5	51.4	59.8	56.8	53.0	60.8	43.1	39.0	47.8
1990-1992 ^b	60.1	59.3	61.0	61.5	61.0	62.2	47.9	47.7	48.3
1993-1995 ^b	61.4	61.0	61.9	62.5	62.2	63.0	52.8	54.4	50.7
1996-1998 ^b	63.4	63.1	63.8	64.5	64.2	64.8	55.1	57.8	52.1
1999-2001 ^b	66.1	66.4	65.8	67.3	67.6	66.9	57.8	60.9	54.1
2002-2008 ^b	67.7 ^e	68.5 ^e	66.9 ^e	68.9 ^e	69.7 ^e	68.0 ^e	59.9 ^e	63.6 ^e	55.8 ^e
5-Year Period Survival (Percent) ^{cd}									
2008	66.2	66.8	65.5	66.8	67.2	66.3	59.3	62.5	55.6
5-Year Relative Survival (Percent), 2002-2008 ^c									
Age at Diagnosis:									
Ages <45	80.0	75.0	83.2	81.6	77.1	84.6	67.9	60.7	72.2
Ages 45-54	72.0	66.3	76.7	73.6	67.8	78.5	60.6	58.8	62.4
Ages 55-64	69.0	68.9	69.0	69.8	69.6	70.2	61.6	64.7	56.7
Ages 65-74	64.6	68.0	59.7	65.1	68.2	60.8	59.1	65.9	48.9
Ages 75+	52.0	56.8	47.4	52.7	57.0	48.6	42.8	50.3	36.4
Ages <65	72.3	69.2	75.3	73.5	70.4	76.6	62.5	62.2	62.9
Ages 65+	58.3	62.9	52.8	58.8	63.0	53.9	52.3	60.4	42.7

^a Based on End Results data from a series of hospital registries and one population-based registry.
^b SEER 9 areas (San Francisco, Connecticut, Detroit, Hawaii, Iowa, New Mexico, Seattle, Utah, Atlanta).
Based on follow-up of patients into 2009.
^c SEER 18 areas (San Francisco, Connecticut, Detroit, Hawaii, Iowa, New Mexico, Seattle, Utah, Atlanta, San Jose-Monterey, Los Angeles, Alaska Native Registry, Rural Georgia, California excluding SF/SJM/LA, Kentucky, Louisiana, New Jersey and Georgia excluding ATL/RG).
Based on follow-up of patients into 2009.
^d Period survival provides a 2008 estimate of survival by piecing together the most recent conditional survival estimates from several cohorts. It is computed here using three year calendar blocks (2006-2008: 0-1 year survival), (2005-2007: 1-2 year survival), (2004-2006: 2-3 year survival), (2003-2005: 3-4 year survival), (2002-2004: 4-5 years survival).
The difference between 1975-1977 and 2002-2008 is statistically significant (p<.05).
^e The standard error is between 5 and 10 percentage points.
^f The standard error is greater than 10 percentage points.
^g -
- Statistic could not be calculated due to fewer than 25 cases during the time period.

Table 3.8
Cancer of the Brain and Other Nervous System (Invasive)

5-Year Relative and Period Survival (Percent) by Race, Sex, Diagnosis Year, Stage and Age

	All Races			Whites			Blacks		
	Total	Males	Females	Total	Males	Females	Total	Males	Females
5-Year Relative Survival (Percent)									
Year of Diagnosis:									
1960-1963 ^a	-	-	-	18	16	21	19	17	21
1970-1973 ^a	-	-	-	20	18	22	19	19	19
1975-1977 ^b	22.4	20.7	24.8	21.9	20.2	24.0	25.4	19.6	34.7 ^g
1978-1980 ^b	23.7	22.4	25.3	23.1	22.0	24.6	28.2	28.8	27.5
1981-1983 ^b	24.0	23.0	25.4	23.3	22.4	24.4	30.8	31.7	29.2 ^g
1984-1986 ^b	27.0	25.7	28.6	26.3	24.9	27.9	30.9	32.8	28.3
1987-1989 ^b	29.0	27.4	31.0	28.3	26.4	30.7	31.6	33.5	29.4
1990-1992 ^b	30.2	30.5	29.8	29.2	29.4	28.9	40.0	41.6	38.1
1993-1995 ^b	32.3	32.9	31.4	31.0	31.4	30.5	41.5	46.1	36.3
1996-1998 ^b	31.1	30.5	31.9	30.3	29.9	30.8	35.7	33.0	38.3
1999-2001 ^b	33.6	30.6	37.5	32.9	30.1	36.4	38.4	33.9	44.6
2002-2008 ^b	35.0 ^f	33.9 ^f	36.3 ^f	33.6 ^f	33.1 ^f	34.2 ^f	40.8 ^f	34.2 ^f	47.1
5-Year Period Survival (Percent) ^{cd}									
2008	34.3	33.0	35.7	33.0	32.2	34.0	41.8	37.0	46.3
Stage Distribution (%) 2002-2008 ^{ee}									
All Stages									
Number of cases	32,222	17,883	14,339	28,107	15,720	12,387	2,198	1,125	1,073
Percent	100%	100%	100%	100%	100%	100%	100%	100%	100%
Localized	75	76	74	75	76	74	74	73	74
Regional	16	16	16	16	16	16	15	16	15
Distant	2	2	2	2	2	2	3	3	3
Unstaged	7	6	8	7	6	8	8	8	8
5-Year Relative Survival (Percent), 2002-2008 ^c									
Age at Diagnosis:									
Ages <45	65.7	62.2	70.0	66.3	63.3	70.3	61.7	54.3	69.1
Ages 45-54	31.5	28.0	36.7	30.3	27.3	34.9	32.9	24.5	42.2
Ages 55-64	16.0	14.4	18.5	15.4	13.6	18.0	19.0	16.6	22.2
Ages 65-74	8.8	7.8	10.2	8.8	7.9	9.8	5.3	4.1	6.8
Ages 75+	4.6	4.4	4.8	4.3	4.3	4.3	11.6	6.7	15.0
Ages <65	44.9	41.2	49.9	44.0	40.7	48.6	47.5	40.0	55.6
Ages 65+	6.8	6.2	7.3	6.5	6.2	6.8	8.1	5.1	11.0
Stage ^e :									
All Stages	33.5	31.7	35.6	32.3	31.0	34.0	39.3	33.2	45.5
Localized	36.2	33.9	39.0	35.0	33.1	37.5	42.2	37.0	47.2
Regional	21.8	21.5	22.2	20.5	21.0	19.9	28.3	21.4	36.0
Distant	37.1	36.2	38.0	38.6	38.9	38.2	26.1 ^g	20.8 ^g	34.1 ^g
Unstaged	29.1	28.6	29.6	27.5	27.5	27.6	37.8	25.8 ^g	50.1 ^g

^a Based on End Results data from a series of hospital registries and one population-based registry.

^b SEER 9 areas (San Francisco, Connecticut, Detroit, Hawaii, Iowa, New Mexico, Seattle, Utah, Atlanta).

Based on follow-up of patients into 2009.

^c SEER 18 areas (San Francisco, Connecticut, Detroit, Hawaii, Iowa, New Mexico, Seattle, Utah, Atlanta, San Jose-Monterey, Los Angeles, Alaska Native Registry, Rural Georgia, California excluding SF/SJM/LA, Kentucky, Louisiana, New Jersey and Georgia excluding ATL/RG).

Based on follow-up of patients into 2009.

^d Period survival provides a 2008 estimate of survival by piecing together the most recent conditional survival estimates from several cohorts. It is computed here using three year calendar blocks (2006-2008: 0-1 year survival), (2005-2007: 1-2 year survival), (2004-2006: 2-3 year survival), (2003-2005: 3-4 year survival), (2002-2004: 4-5 years survival).

^e Stage at diagnosis is classified using SEER Summary Stage 2000.

^f The difference between 1975-1977 and 2002-2008 is statistically significant (p<.05).

^g The standard error is between 5 and 10 percentage points.

^h The standard error is greater than 10 percentage points.

- Statistic could not be calculated due to fewer than 25 cases during the time period.

Table 4.14
Cancer of the Female Breast (Invasive)

5-Year Relative and Period Survival (Percent) by Race, Diagnosis Year, Stage and Age

	All Races, Females			White Females			Black Females		
	All	<50	50+	All	<50	50+	All	<50	50+
5-Year Relative Survival (Percent)									
Year of Diagnosis:									
1960-1963 ^a	-	-	-	63	-	-	46	-	-
1970-1973 ^a	-	-	-	68	-	-	51	-	-
1975-1977 ^b	75.1	76.7	74.6	75.9	77.9	75.2	62.2	62.5	62.1
1978-1980 ^b	74.6	75.6	74.3	75.3	76.3	75.0	63.4	67.2	61.5
1981-1983 ^b	76.4	77.5	76.0	77.3	78.7	77.0	63.8	65.4	63.0
1984-1986 ^b	79.2	78.0	79.6	80.3	79.7	80.4	65.2	64.0	65.9
1987-1989 ^b	84.2	81.5	85.2	85.3	82.9	86.1	71.3	69.6	72.3
1990-1992 ^b	85.4	83.5	86.1	86.6	85.2	87.1	71.7	70.3	72.6
1993-1995 ^b	86.5	84.3	87.3	87.8	86.3	88.4	72.7	70.3	74.2
1996-1998 ^b	88.4	86.6	89.0	89.5	88.3	89.9	76.3	74.1	77.7
1999-2001 ^b	89.9	88.1	90.5	91.0	89.8	91.4	78.8	76.9	80.0
2002-2008 ^b	90.2 ^f	89.9 ^f	90.3 ^f	91.7 ^f	91.6 ^f	91.7 ^f	78.0 ^f	78.5 ^f	77.8 ^f
5-Year Period Survival (Percent) ^{cd}									
2008	89.2	89.1	89.3	90.5	90.5	90.5	78.4	78.8	78.2
Stage Distribution (%) 2002-2008 ^{ee}									
All Stages									
Number of cases	314,744	79,242	235,502	257,228	60,443	196,785	32,173	10,259	21,914
Percent	100%	100%	100%	100%	100%	100%	100%	100%	100%
Localized	60	54	62	61	54	63	51	47	53
Regional	33	41	30	32	41	30	38	44	36
Distant	5	4	5	5	4	5	8	7	9
Unstaged	2	1	2	2	1	2	2	2	2
5-Year Relative Survival (Percent), 2002-2008 ^c									
Age at Diagnosis:									
Ages <45	87.2	-	-	88.4	-	-	77.3	-	-
Ages 45-54	89.7	-	-	91.2	-	-	78.4	-	-
Ages 55-64	89.8	-	-	90.9	-	-	79.9	-	-
Ages 65-74	90.4	-	-	91.5	-	-	79.7	-	-
Ages 75+	86.8	-	-	88.4	-	-	69.9	-	-
Ages <65	89.2	-	-	90.5	-	-	78.6	-	-
Ages 65+	88.6	-	-	90.0	-	-	75.5	-	-
Stage ^e :									
All Stages	89.0	88.6	89.1	90.3	90.1	90.3	77.7	77.8	77.6
Localized	98.4	96.1	99.1	99.2	96.7	99.8	92.7	91.5	93.3
Regional	83.9	85.0	83.3	85.3	86.9	84.6	72.9	73.3	72.6
Distant	23.8	31.4	21.7	25.1	34.5	22.8	15.4	19.5	13.8
Unstaged	50.7	69.7	46.3	49.7	71.4	45.4	44.4	52.7	41.5
<i>In Situ</i> ^j	100.0	100.0	100.0	100.0	100.0	100.0	100.0	99.7	100.0

^a Based on End Results data from a series of hospital registries and one population-based registry.

^b SEER 9 areas (San Francisco, Connecticut, Detroit, Hawaii, Iowa, New Mexico, Seattle, Utah, Atlanta).
Based on follow-up of patients into 2009.

^c SEER 18 areas (San Francisco, Connecticut, Detroit, Hawaii, Iowa, New Mexico, Seattle, Utah, Atlanta, San Jose-Monterey, Los Angeles, Alaska Native Registry, Rural Georgia, California excluding SF/SJM/LA, Kentucky, Louisiana, New Jersey and Georgia excluding ATL/RG).

Based on follow-up of patients into 2009.

^d Period survival provides a 2008 estimate of survival by piecing together the most recent conditional survival estimates from several cohorts. It is computed here using three year calendar blocks (2006-2008: 0-1 year survival), (2005-2007: 1-2 year survival), (2004-2006: 2-3 year survival), (2003-2005: 3-4 year survival), (2002-2004: 4-5 years survival).

^e Stage at diagnosis is classified using SEER Summary Stage 2000.

^f The difference between 1975-1977 and 2002-2008 is statistically significant ($p < .05$).

^g The standard error is between 5 and 10 percentage points.

^h The standard error is greater than 10 percentage points.

^j *In situ* cases are not included in the All Stages group.

- Statistic could not be calculated due to fewer than 25 cases during the time period.

Table 5.8
Cancer of the Cervix Uteri (Invasive)

5-Year Relative and Period Survival (Percent) by Race, Diagnosis Year, Stage and Age

	All Races, Females			White Females			Black Females		
	All	<50	50+	All	<50	50+	All	<50	50+
5-Year Relative Survival (Percent)									
Year of Diagnosis:									
1960-1963 ^a	-	-	-	58	-	-	47	-	-
1970-1973 ^a	-	-	-	64	-	-	61	-	-
1975-1977 ^b	69.1	82.5	57.9	69.8	83.9	58.2	64.5	75.6	54.9
1978-1980 ^b	67.5	78.5	57.8	68.2	79.8	58.4	61.0	70.6	51.9
1981-1983 ^b	67.1	79.5	55.1	67.9	80.7	55.3	59.4	73.6	46.7
1984-1986 ^b	67.3	78.0	55.3	69.0	79.7	56.5	57.6	68.0	47.7
1987-1989 ^b	70.1	79.6	58.3	72.5	82.6	58.6	57.4	63.3	52.3
1990-1992 ^b	69.6	79.0	57.0	70.9	81.2	56.6	58.0	63.5	51.0
1993-1995 ^b	72.6	81.8	59.8	74.2	83.5	60.2	63.1	71.0	53.4
1996-1998 ^b	72.7	81.0	60.4	73.7	82.7	59.2	64.9	68.0	61.0
1999-2001 ^b	72.4	83.9	56.4	73.4	85.7	55.2	66.0	73.9	56.8
2002-2008 ^b	68.8	79.2 ^f	55.0	70.2	81.4	54.6	61.1	69.1 ^f	51.7
5-Year Period Survival (Percent) ^{cd}									
2008	67.5	77.1	55.1	69.0	79.0	55.6	56.5	64.8	47.5
Stage Distribution (%) 2002-2008 ^{ee}									
All Stages									
Number of cases	22,537	12,581	9,956	17,030	9,751	7,279	3,199	1,652	1,547
Percent	100%	100%	100%	100%	100%	100%	100%	100%	100%
Localized	47	59	33	49	60	33	40	49	30
Regional	36	30	45	35	28	45	41	38	45
Distant	12	8	17	12	8	17	14	9	19
Unstaged	4	3	6	4	3	5	5	4	6
5-Year Relative Survival (Percent), 2002-2008 ^c									
Age at Diagnosis:									
Ages <45	78.9	-	-	80.5	-	-	68.6	-	-
Ages 45-54	67.8	-	-	69.0	-	-	58.4	-	-
Ages 55-64	59.3	-	-	59.0	-	-	53.7	-	-
Ages 65-74	56.3	-	-	56.5	-	-	49.2	-	-
Ages 75+	36.1	-	-	35.6	-	-	33.1	-	-
Ages <65	72.0	-	-	73.4	-	-	62.5	-	-
Ages 65+	47.6	-	-	47.7	-	-	41.6	-	-
Stage ^{ee} :									
All Stages	67.9	77.1	55.9	69.2	78.6	56.3	58.5	66.9	48.8
Localized	90.7	93.3	84.8	91.6	94.0	85.9	83.6	87.8	75.2
Regional	56.7	61.7	52.4	57.6	63.5	52.3	50.8	52.7	48.9
Distant	16.2	20.3	13.5	17.1	21.9	13.6	10.8	10.1	11.2
Unstaged	54.8	76.8	37.0	54.6	76.6	37.4	53.9	75.4 ^g	34.1 ^g

^a Based on End Results data from a series of hospital registries and one population-based registry.

^b SEER 9 areas (San Francisco, Connecticut, Detroit, Hawaii, Iowa, New Mexico, Seattle, Utah, Atlanta).

Based on follow-up of patients into 2009.

^c SEER 18 areas (San Francisco, Connecticut, Detroit, Hawaii, Iowa, New Mexico, Seattle, Utah, Atlanta, San Jose-Monterey, Los Angeles, Alaska Native Registry, Rural Georgia, California excluding SF/SJM/LA, Kentucky, Louisiana, New Jersey and Georgia excluding ATL/RG).

Based on follow-up of patients into 2009.

^d Period survival provides a 2008 estimate of survival by piecing together the most recent conditional survival estimates from several cohorts. It is computed here using three year calendar blocks (2006-2008: 0-1 year survival), (2005-2007: 1-2 year survival), (2004-2006: 2-3 year survival), (2003-2005: 3-4 year survival), (2002-2004: 4-5 years survival).

^e Stage at diagnosis is classified using SEER Summary Stage 2000.

^f The difference between 1975-1977 and 2002-2008 is statistically significant (p<.05).

^g The standard error is between 5 and 10 percentage points.

^h The standard error is greater than 10 percentage points.

- Statistic could not be calculated due to fewer than 25 cases during the time period.

Table 6.12
Cancer of the Colon and Rectum (Invasive)

5-Year Relative and Period Survival (Percent) by Race, Sex, Diagnosis Year, Stage and Age

	All Races			Whites			Blacks		
	Total	Males	Females	Total	Males	Females	Total	Males	Females
5-Year Relative Survival (Percent)									
Year of Diagnosis:									
1960-1963 ^a	-	-	-	-	-	-	-	-	-
1970-1973 ^a	-	-	-	-	-	-	-	-	-
1975-1977 ^b	50.1	49.2	50.8	50.3	49.6	50.9	45.1	43.4	46.4
1978-1980 ^b	51.4	50.5	52.3	51.8	50.8	52.6	45.5	43.6	46.9
1981-1983 ^b	54.3	54.0	54.5	54.7	54.7	54.6	46.6	42.8	49.7
1984-1986 ^b	57.9	57.9	57.8	58.6	58.7	58.4	48.4	47.5	49.2
1987-1989 ^b	59.8	60.1	59.5	60.3	60.8	59.7	52.4	50.1	54.5
1990-1992 ^b	61.4	61.3	61.6	62.2	62.0	62.4	53.0	54.6	51.5
1993-1995 ^b	60.2	60.0	60.4	60.8	60.6	61.0	52.0	51.2	52.7
1996-1998 ^b	62.7	62.6	62.8	63.3	63.1	63.5	54.0	54.9	53.2
1999-2001 ^b	65.4	66.3	64.5	66.9	67.6	66.1	54.2	55.5	53.0
2002-2008 ^b	66.0 ^f	66.2 ^f	65.7 ^f	67.0 ^f	67.7 ^f	66.3 ^f	56.7 ^f	54.7 ^f	58.5 ^f
5-Year Period Survival (Percent) ^{cd}									
2008	65.0	65.2	64.8	65.7	66.0	65.3	57.6	56.6	58.5
Stage Distribution (%) 2002-2008 ^{ee}									
All Stages									
Number of cases	214,881	109,472	105,409	172,006	88,423	83,583	24,607	11,534	13,073
Percent	100%	100%	100%	100%	100%	100%	100%	100%	100%
Localized	39	40	39	40	40	39	36	36	36
Regional	36	36	37	36	36	37	34	34	34
Distant	20	20	20	19	19	19	24	25	24
Unstaged	5	4	5	5	4	5	5	5	6
5-Year Relative Survival (Percent), 2002-2008 ^c									
Age at Diagnosis:									
Ages <45	67.2	66.0	68.5	68.7	66.6	70.9	59.5	58.3	60.7
Ages 45-54	69.7	68.6	71.1	70.5	69.5	72.0	61.7	59.3	63.8
Ages 55-64	68.0	67.3	69.0	68.7	68.1	69.6	60.6	59.0	62.3
Ages 65-74	66.5	66.0	67.1	67.0	66.7	67.3	59.6	57.7	61.4
Ages 75+	57.9	58.4	57.6	59.2	59.8	58.7	45.1	43.5	45.8
Ages <65	68.5	67.6	69.6	69.3	68.4	70.6	60.8	59.0	62.7
Ages 65+	61.5	62.1	60.9	62.3	63.1	61.6	52.5	51.9	52.9
Stage ^{ee} :									
All Stages	64.3	64.6	64.1	65.0	65.4	64.6	56.8	55.9	57.6
Localized	89.9	90.0	89.7	90.2	90.5	90.0	85.7	84.9	86.3
Regional	69.6	69.3	70.0	70.1	69.9	70.3	63.9	62.5	65.0
Distant	11.9	11.4	12.5	12.3	11.8	12.9	9.0	8.2	9.6
Unstaged	33.9	37.6	30.6	31.4	35.1	28.1	36.3	39.7	33.8

^a Based on End Results data from a series of hospital registries and one population-based registry.

^b SEER 9 areas (San Francisco, Connecticut, Detroit, Hawaii, Iowa, New Mexico, Seattle, Utah, Atlanta).

Based on follow-up of patients into 2009.

^c SEER 18 areas (San Francisco, Connecticut, Detroit, Hawaii, Iowa, New Mexico, Seattle, Utah, Atlanta, San Jose-Monterey, Los Angeles, Alaska Native Registry, Rural Georgia, California excluding SF/SJM/LA, Kentucky, Louisiana, New Jersey and Georgia excluding ATL/RG).

Based on follow-up of patients into 2009.

^d Period survival provides a 2008 estimate of survival by piecing together the most recent conditional survival estimates from several cohorts. It is computed here using three year calendar blocks (2006-2008: 0-1 year survival), (2005-2007: 1-2 year survival), (2004-2006: 2-3 year survival), (2003-2005: 3-4 year survival), (2002-2004: 4-5 years survival).

^e Stage at diagnosis is classified using SEER Summary Stage 2000.

^f The difference between 1975-1977 and 2002-2008 is statistically significant (p<.05).

^g The standard error is between 5 and 10 percentage points.

^h The standard error is greater than 10 percentage points.

- Statistic could not be calculated due to fewer than 25 cases during the time period.

Table 6.13
Cancer of the Colon (Invasive)

5-Year Relative and Period Survival (Percent) by Race, Sex, Diagnosis Year, Stage and Age

	All Races			Whites			Blacks		
	Total	Males	Females	Total	Males	Females	Total	Males	Females
5-Year Relative Survival (Percent)									
Year of Diagnosis:									
1960-1963 ^a	-	-	-	43	42	44	34	32	35
1970-1973 ^a	-	-	-	49	47	50	37	36	38
1975-1977 ^b	50.9	50.4	51.3	51.1	50.8	51.4	45.3	43.9	46.1
1978-1980 ^b	52.5	51.5	53.4	52.6	51.6	53.5	48.9	47.5	49.9
1981-1983 ^b	55.4	55.8	55.0	55.7	56.4	55.1	48.7	44.9	51.7
1984-1986 ^b	58.5	59.0	58.0	59.2	59.8	58.6	49.3	48.9	49.5
1987-1989 ^b	60.5	61.0	59.9	60.9	61.7	60.2	52.5	50.9	53.8
1990-1992 ^b	62.2	62.5	62.0	63.0	63.2	62.7	53.5	55.0	52.3
1993-1995 ^b	60.1	60.3	59.9	60.8	61.0	60.6	51.5	51.0	51.8
1996-1998 ^b	62.4	62.5	62.2	63.2	63.2	63.1	53.5	55.3	52.1
1999-2001 ^b	65.2	66.3	64.1	66.9	68.0	65.9	52.6	53.8	51.5
2002-2008 ^b	65.1 ^f	65.4 ^f	64.9 ^f	66.2 ^f	66.9 ^f	65.6 ^f	55.4 ^f	53.4 ^f	56.9 ^f
5-Year Period Survival (Percent) ^{cd}									
2008	64.4	64.6	64.1	65.2	65.5	65.0	56.9	56.6	57.1
Stage Distribution (%) 2002-2008 ^{ee}									
All Stages									
Number of cases	152,034	73,954	78,080	121,750	59,796	61,954	18,395	8,355	10,040
Percent	100%	100%	100%	100%	100%	100%	100%	100%	100%
Localized	37	38	36	38	39	37	34	34	33
Regional	38	37	38	38	37	38	36	36	36
Distant	21	21	21	20	20	20	26	26	25
Unstaged	4	4	5	4	4	5	4	4	5
5-Year Relative Survival (Percent), 2002-2008 ^c									
Age at Diagnosis:									
Ages <45	65.6	65.1	66.1	67.5	65.9	69.2	58.4	59.2	57.6
Ages 45-54	67.0	66.4	67.7	67.9	67.4	68.6	60.0	58.5	61.3
Ages 55-64	66.6	66.1	67.2	67.6	67.1	68.2	59.0	58.6	59.4
Ages 65-74	66.5	66.2	66.8	67.0	66.9	67.1	59.8	58.1	61.3
Ages 75+	59.1	59.6	58.7	60.3	61.0	59.9	46.5	45.1	47.2
Ages <65	66.6	66.1	67.2	67.7	67.1	68.5	59.3	58.7	59.8
Ages 65+	62.0	62.7	61.4	62.8	63.6	62.1	53.2	52.6	53.5
Stage ^e :									
All Stages	63.6	64.0	63.2	64.4	64.9	64.0	56.1	55.9	56.3
Localized	90.8	91.1	90.5	91.3	91.7	90.8	86.7	86.1	87.2
Regional	70.0	69.8	70.3	70.5	70.3	70.7	65.1	64.4	65.6
Distant	11.7	11.3	12.0	12.1	11.6	12.6	8.9	8.4	9.3
Unstaged	27.4	31.5	24.3	25.6	29.2	22.8	28.2	33.2	24.9

^a Based on End Results data from a series of hospital registries and one population-based registry.
^b SEER 9 areas (San Francisco, Connecticut, Detroit, Hawaii, Iowa, New Mexico, Seattle, Utah, Atlanta).
Based on follow-up of patients into 2009.
^c SEER 18 areas (San Francisco, Connecticut, Detroit, Hawaii, Iowa, New Mexico, Seattle, Utah, Atlanta, San Jose-Monterey, Los Angeles, Alaska Native Registry, Rural Georgia, California excluding SF/SJM/LA, Kentucky, Louisiana, New Jersey and Georgia excluding ATL/RG).
Based on follow-up of patients into 2009.
^d Period survival provides a 2008 estimate of survival by piecing together the most recent conditional survival estimates from several cohorts. It is computed here using three year calendar blocks (2006-2008: 0-1 year survival), (2005-2007: 1-2 year survival), (2004-2006: 2-3 year survival), (2003-2005: 3-4 year survival), (2002-2004: 4-5 years survival).
^e Stage at diagnosis is classified using SEER Summary Stage 2000.
^f The difference between 1975-1977 and 2002-2008 is statistically significant (p<.05).
^g The standard error is between 5 and 10 percentage points.
^h The standard error is greater than 10 percentage points.
- Statistic could not be calculated due to fewer than 25 cases during the time period.

Table 6.14
Cancer of the Rectum (Invasive)

5-Year Relative and Period Survival (Percent) by Race, Sex, Diagnosis Year, Stage and Age

	All Races			Whites			Blacks		
	Total	Males	Females	Total	Males	Females	Total	Males	Females
5-Year Relative Survival (Percent)									
Year of Diagnosis:									
1960-1963 ^a	-	-	-	38	36	41	27	28	27
1970-1973 ^a	-	-	-	45	43	48	30	20	40
1975-1977 ^b	48.3	47.2	49.6	48.4	47.5	49.5	44.6	41.8	46.9
1978-1980 ^b	49.1	48.6	49.6	49.9	49.5	50.3	34.9	34.0	35.6
1981-1983 ^b	51.7	50.5	53.1	52.4	51.3	53.6	39.8	37.3	42.4
1984-1986 ^b	56.5	55.9	57.3	57.3	56.7	57.9	45.8	43.5	48.0
1987-1989 ^b	58.3	58.1	58.5	58.8	59.1	58.5	52.3	47.7	57.1
1990-1992 ^b	59.5	58.7	60.6	60.2	59.4	61.4	51.3	53.5	48.7
1993-1995 ^b	60.4	59.2	61.8	60.8	59.7	62.2	53.9	51.6	56.5
1996-1998 ^b	63.6	62.8	64.6	63.9	63.2	64.8	55.3	54.0	56.4
1999-2001 ^b	66.1	66.5	65.6	66.8	66.9	66.7	59.4	60.3	58.3
2002-2008 ^b	68.1 ^f	67.9 ^f	68.4 ^f	68.8 ^f	69.2 ^f	68.3 ^f	60.7 ^f	58.1 ^f	63.3 ^f
5-Year Period Survival (Percent) ^{cd}									
2008	66.6	66.5	66.6	66.8	67.1	66.3	59.7	56.5	63.0
Stage Distribution (%) 2002-2008 ^{ee}									
All Stages									
Number of cases	62,847	35,518	27,329	50,256	28,627	21,629	6,212	3,179	3,033
Percent	100%	100%	100%	100%	100%	100%	100%	100%	100%
Localized	44	44	45	44	44	45	44	42	46
Regional	33	33	32	33	34	33	28	29	27
Distant	17	18	17	17	18	17	20	22	18
Unstaged	6	5	6	5	5	6	8	7	9
5-Year Relative Survival (Percent), 2002-2008 ^c									
Age at Diagnosis:									
Ages <45	69.6	67.1	72.5	70.3	67.5	73.8	61.3	56.5	66.9
Ages 45-54	73.9	71.7	77.0	74.4	72.3	77.4	65.0	60.6	69.7
Ages 55-64	70.7	69.3	73.1	70.9	69.9	72.6	65.3	60.1	71.3
Ages 65-74	66.6	65.6	68.0	67.0	66.4	67.9	58.6	56.0	61.1
Ages 75+	53.9	54.6	53.3	55.2	56.3	54.3	39.2	37.8	39.9
Ages <65	71.7	69.9	74.5	72.1	70.5	74.6	64.5	59.7	69.9
Ages 65+	60.1	60.7	59.4	60.8	61.7	59.7	49.8	49.1	50.4
Stage ^{ee} :									
All Stages	66.2	65.8	66.7	66.5	66.4	66.6	58.9	56.1	61.7
Localized	88.0	88.1	88.0	88.2	88.4	88.0	83.2	82.2	84.0
Regional	68.5	68.2	68.9	69.2	69.1	69.3	59.2	56.3	62.2
Distant	12.7	11.7	14.0	12.9	12.2	13.8	9.3	7.3	11.0
Unstaged	45.4	47.0	43.6	42.4	44.5	40.0	49.6	48.9	49.8

^a Based on End Results data from a series of hospital registries and one population-based registry.^b SEER 9 areas (San Francisco, Connecticut, Detroit, Hawaii, Iowa, New Mexico, Seattle, Utah, Atlanta).

Based on follow-up of patients into 2009.

^c SEER 18 areas (San Francisco, Connecticut, Detroit, Hawaii, Iowa, New Mexico, Seattle, Utah, Atlanta, San Jose-Monterey, Los Angeles, Alaska Native Registry, Rural Georgia, California excluding SF/SJM/LA, Kentucky, Louisiana, New Jersey and Georgia excluding ATL/RG).

Based on follow-up of patients into 2009.

^d Period survival provides a 2008 estimate of survival by piecing together the most recent conditional survival estimates from several cohorts. It is computed here using three year calendar blocks (2006-2008: 0-1 year survival), (2005-2007: 1-2 year survival), (2004-2006: 2-3 year survival), (2003-2005: 3-4 year survival), (2002-2004: 4-5 years survival).^e Stage at diagnosis is classified using SEER Summary Stage 2000.^f The difference between 1975-1977 and 2002-2008 is statistically significant (p<.05).^g The standard error is between 5 and 10 percentage points.^h The standard error is greater than 10 percentage points.

- Statistic could not be calculated due to fewer than 25 cases during the time period.

Table 7.8
Cancer of the Corpus and Uterus, NOS (Invasive)

5-Year Relative and Period Survival (Percent) by Race, Diagnosis Year, Stage and Age

	All Races, Females			White Females			Black Females		
	All	<50	50+	All	<50	50+	All	<50	50+
5-Year Relative Survival (Percent)									
Year of Diagnosis:									
1960-1963 ^a	-	-	-	73	-	-	31	-	-
1970-1973 ^a	-	-	-	81	-	-	44	-	-
1975-1977 ^b	87.0	92.7	86.3	88.1	93.3	87.5	60.3	84.4 ^g	55.8
1978-1980 ^b	82.6	91.7	81.4	83.8	93.1	82.8	55.0	82.3 ^g	49.7
1981-1983 ^b	80.8	91.2	79.5	82.2	92.3	81.1	50.9	82.7 ^g	46.0
1984-1986 ^b	82.6	93.6	81.2	84.1	93.9	82.9	56.3	83.6 ^g	52.7
1987-1989 ^b	82.5	90.2	81.4	84.1	91.0	83.2	57.0	84.6 ^g	53.1
1990-1992 ^b	83.7	90.0	82.7	85.8	92.3	84.9	53.9	72.5 ^g	50.2
1993-1995 ^b	83.2	90.1	82.0	84.9	91.7	83.9	58.6	81.7	54.0
1996-1998 ^b	83.7	90.1	82.6	85.4	91.2	84.5	61.5	82.6	57.0
1999-2001 ^b	84.4	88.8	83.6	86.2	89.9	85.6	60.8	71.0	58.1
2002-2008 ^b	83.3 ^f	89.2 ^f	82.2 ^f	85.4 ^f	91.1	84.4 ^f	62.6	75.5	59.5
5-Year Period Survival (Percent) ^{cd}									
2008	82.0	88.5	80.8	84.1	89.6	83.1	61.7	77.5	58.4
Stage Distribution (%) 2002-2008 ^{ee}									
All Stages									
Number of cases	61,530	9,794	51,736	50,944	7,539	43,405	5,548	863	4,685
Percent	100%	100%	100%	100%	100%	100%	100%	100%	100%
Localized	68	72	67	70	73	69	52	63	51
Regional	20	17	20	19	17	20	26	17	27
Distant	8	7	9	8	6	8	16	14	16
Unstaged	4	4	4	4	3	4	6	6	6
5-Year Relative Survival (Percent), 2002-2008 ^c									
Age at Diagnosis:									
Ages <45	89.8	-	-	90.6	-	-	81.5	-	-
Ages 45-54	88.0	-	-	89.5	-	-	70.2	-	-
Ages 55-64	84.8	-	-	87.2	-	-	62.7	-	-
Ages 65-74	77.7	-	-	81.1	-	-	51.9	-	-
Ages 75+	67.7	-	-	70.6	-	-	40.7	-	-
Ages <65	86.6	-	-	88.4	-	-	68.1	-	-
Ages 65+	73.3	-	-	76.4	-	-	47.9	-	-
Stage ^e :									
All Stages	81.5	89.1	80.0	83.6	90.1	82.5	59.5	78.2	55.8
Localized	95.4	96.4	95.2	96.3	96.5	96.2	84.8	94.0	82.5
Regional	66.8	82.7	64.1	69.6	84.2	67.3	43.5	69.8	40.0
Distant	16.4	27.3	14.7	17.6	29.3	15.9	9.2	16.2	8.0
Unstaged	49.5	88.7	42.2	50.0	88.2	43.8	35.7	82.1 ^g	26.5

^a Based on End Results data from a series of hospital registries and one population-based registry.

^b SEER 9 areas (San Francisco, Connecticut, Detroit, Hawaii, Iowa, New Mexico, Seattle, Utah, Atlanta).
Based on follow-up of patients into 2009.

^c SEER 18 areas (San Francisco, Connecticut, Detroit, Hawaii, Iowa, New Mexico, Seattle, Utah, Atlanta, San Jose-Monterey, Los Angeles, Alaska Native Registry, Rural Georgia, California excluding SF/SJM/LA, Kentucky, Louisiana, New Jersey and Georgia excluding ATL/RG).

Based on follow-up of patients into 2009.

^d Period survival provides a 2008 estimate of survival by piecing together the most recent conditional survival estimates from several cohorts. It is computed here using three year calendar blocks (2006-2008: 0-1 year survival), (2005-2007: 1-2 year survival), (2004-2006: 2-3 year survival), (2003-2005: 3-4 year survival), (2002-2004: 4-5 years survival).

^e Stage at diagnosis is classified using SEER Summary Stage 2000.

^f The difference between 1975-1977 and 2002-2008 is statistically significant (p<.05).

^g The standard error is between 5 and 10 percentage points.

^h The standard error is greater than 10 percentage points.

- Statistic could not be calculated due to fewer than 25 cases during the time period.

Table 8.8
Cancer of the Esophagus (Invasive)

5-Year Relative and Period Survival (Percent) by Race, Sex, Diagnosis Year, Stage and Age

	All Races			Whites			Blacks		
	Total	Males	Females	Total	Males	Females	Total	Males	Females
5-Year Relative Survival (Percent)									
Year of Diagnosis:									
1960-1963 ^a	-	-	-	4	4	6	1	0	2
1970-1973 ^a	-	-	-	4	4	4	4	4	3
1975-1977 ^b	5.0	3.9	7.5	5.5	4.8	7.0	3.2	1.6	7.7
1978-1980 ^b	5.0	4.8	5.6	5.3	5.3	5.2	4.3	3.4	6.9
1981-1983 ^b	6.6	6.0	8.2	7.3	6.5	9.0	4.3	3.7	6.5
1984-1986 ^b	9.6	8.6	12.0	10.4	9.2	12.9	8.7	8.2	9.9
1987-1989 ^b	9.5	9.4	9.7	10.6	11.1	9.4	6.6	5.3	10.2
1990-1992 ^b	12.2	11.8	13.4	13.0	12.4	14.9	9.2	9.4	8.4
1993-1995 ^b	12.2	12.3	11.7	13.5	13.7	12.8	7.5	7.8	6.9
1996-1998 ^b	13.4	13.1	14.4	14.2	14.1	14.7	10.2	8.5	13.6
1999-2001 ^b	18.1	17.7	19.5	18.8	18.6	19.6	12.9	11.1	16.3
2002-2008 ^b	19.4 ^f	19.4 ^f	19.2 ^f	20.5 ^f	20.6 ^f	20.1 ^f	13.5 ^f	12.5 ^f	15.4
5-Year Period Survival (Percent) ^{cd}									
2008	18.0	18.0	17.8	19.0	19.0	18.9	12.0	11.4	13.1
Stage Distribution (%) 2002-2008 ^{ee}									
All Stages									
Number of cases	20,120	15,560	4,560	16,577	13,035	3,542	2,449	1,715	734
Percent	100%	100%	100%	100%	100%	100%	100%	100%	100%
Localized	22	21	25	23	22	26	20	19	23
Regional	30	31	29	30	31	28	32	31	33
Distant	35	37	28	35	37	28	34	36	29
Unstaged	13	11	18	12	11	18	14	13	16
5-Year Relative Survival (Percent), 2002-2008 ^c									
Age at Diagnosis:									
Ages <45	19.1	19.7	16.3	20.2	20.3	19.5	10.2	12.9	-
Ages 45-54	20.1	18.9	25.8	21.7	20.3	30.5	12.6	10.6	16.8
Ages 55-64	19.0	18.7	20.6	20.3	20.1	22.0	11.2	10.8	12.5
Ages 65-74	18.0	17.7	19.2	19.0	18.8	19.6	11.9	10.1	16.2
Ages 75+	11.7	12.5	10.1	12.1	13.0	10.4	7.6	8.6	5.2
Ages <65	19.4	18.9	21.9	20.8	20.2	24.2	11.7	10.9	13.8
Ages 65+	14.9	15.3	13.7	15.5	16.1	13.9	10.2	9.6	11.3
Stage ^g :									
All Stages	16.9	17.1	16.4	17.9	18.1	17.0	11.1	10.4	12.6
Localized	37.8	40.2	30.7	40.4	42.7	33.1	20.3	21.5	18.0
Regional	19.8	19.8	20.0	20.6	20.6	20.6	13.6	13.2	14.9
Distant	3.4	3.2	4.1	3.4	3.3	3.8	3.1	1.8	6.0
Unstaged	10.5	10.6	10.2	10.1	11.0	8.1	10.4	9.2	12.7

^a Based on End Results data from a series of hospital registries and one population-based registry.

^b SEER 9 areas (San Francisco, Connecticut, Detroit, Hawaii, Iowa, New Mexico, Seattle, Utah, Atlanta).

Based on follow-up of patients into 2009.

^c SEER 18 areas (San Francisco, Connecticut, Detroit, Hawaii, Iowa, New Mexico, Seattle, Utah, Atlanta, San Jose-Monterey, Los Angeles, Alaska Native Registry, Rural Georgia, California excluding SF/SJM/LA, Kentucky, Louisiana, New Jersey and Georgia excluding ATL/RG).

Based on follow-up of patients into 2009.

^d Period survival provides a 2008 estimate of survival by piecing together the most recent conditional survival estimates from several cohorts. It is computed here using three year calendar blocks (2006-2008: 0-1 year survival), (2005-2007: 1-2 year survival), (2004-2006: 2-3 year survival), (2003-2005: 3-4 year survival), (2002-2004: 4-5 years survival).

^e Stage at diagnosis is classified using SEER Summary Stage 2000.

^f The difference between 1975-1977 and 2002-2008 is statistically significant (p<.05).

^g The standard error is between 5 and 10 percentage points.

^h The standard error is greater than 10 percentage points.

- Statistic could not be calculated due to fewer than 25 cases during the time period.

Table 9.8
Hodgkin Lymphoma

5-Year Relative and Period Survival (Percent) by Race, Sex, Diagnosis Year and Age

	All Races			Whites			Blacks		
	Total	Males	Females	Total	Males	Females	Total	Males	Females
5-Year Relative Survival (Percent)									
Year of Diagnosis:									
1960-1963 ^a	-	-	-	40	34	48	-	-	-
1970-1973 ^a	-	-	-	67	66	69	-	-	-
1975-1977 ^b	72.0	70.3	74.3	72.3	70.6	74.5	70.2	68.6 ^g	73.3 ^g
1978-1980 ^b	71.7	70.3	73.6	71.8	69.8	74.4	70.6	74.8 ^g	63.1 ^g
1981-1983 ^b	74.2	72.9	75.9	74.6	73.8	75.6	71.6	69.2 ^g	76.0 ^g
1984-1986 ^b	78.4	76.6	80.7	78.9	77.0	81.2	74.7	75.7 ^g	72.2 ^g
1987-1989 ^b	79.3	76.7	82.6	79.8	76.9	83.5	72.2	71.8 ^g	72.7 ^g
1990-1992 ^b	81.7	79.3	84.8	82.8	81.1	85.0	73.9	64.6	84.1
1993-1995 ^b	81.7	79.2	84.7	82.1	80.0	84.7	78.4	74.4	82.8
1996-1998 ^b	85.1	84.5	85.9	85.8	84.4	87.3	81.2	84.1	78.0
1999-2001 ^b	85.0	82.7	87.9	85.7	83.9	87.8	81.3	75.2	89.5
2002-2008 ^b	87.3 ^f	86.4 ^f	88.4 ^f	88.3 ^f	87.8 ^f	89.0 ^f	82.9 ^f	78.9 ^f	86.4 ^f
5-Year Period Survival (Percent) ^{cd}									
2008	85.1	84.6	85.7	85.3	84.9	85.8	82.1	80.0	84.1
Stage Distribution (%) 2002-2008 ^{ce}									
All Stages									
Number of cases	14,733	7,986	6,747	12,185	6,613	5,572	1,698	891	807
Percent	100%	100%	100%	100%	100%	100%	100%	100%	100%
Localized	18	18	17	18	19	17	19	20	18
Regional	41	36	47	41	37	47	34	28	39
Distant	37	41	32	36	40	31	44	49	38
Unstaged	5	5	5	5	5	5	4	3	4
5-Year Relative Survival (Percent), 2002-2008 ^c									
Age at Diagnosis:									
Ages <45	93.1	91.9	94.3	93.8	93.0	94.8	86.9	83.5	90.1
Ages 45-54	84.6	82.4	88.1	86.4	84.4	89.3	73.7	67.9	83.3
Ages 55-64	75.3	74.6	76.2	76.9	76.8	77.0	64.3 ^g	58.3 ^g	70.2 ^g
Ages 65-74	60.6	57.0	64.4	60.8	56.3	65.8	58.6 ^g	63.3 ^g	54.3 ^g
Ages 75+	40.2	41.3	39.1	41.6	41.8	41.2	23.3 ^h	-	-
Ages <65	90.0	88.4	92.0	91.0	89.7	92.5	82.8	78.3	87.6
Ages 65+	50.9	50.6	51.1	51.4	50.2	52.7	49.1 ^g	60.5 ^g	39.8 ^g
Stage ^e :									
All Stages	84.7	83.7	85.9	85.2	84.3	86.1	80.7	77.5	83.8
Localized	90.0	90.7	89.1	90.0	90.6	89.3	90.1	91.6	87.8
Regional	91.0	90.3	91.5	91.4	90.8	91.9	86.4	83.4	88.5
Distant	75.7	74.9	76.6	75.9	75.7	76.0	72.8	68.9	77.9
Unstaged	81.3	81.6	80.9	82.2	82.8	81.3	69.8 ^g	61.2 ^h	76.4 ^g

^a Based on End Results data from a series of hospital registries and one population-based registry.^b SEER 9 areas (San Francisco, Connecticut, Detroit, Hawaii, Iowa, New Mexico, Seattle, Utah, Atlanta). Based on follow-up of patients into 2009.^c SEER 18 areas (San Francisco, Connecticut, Detroit, Hawaii, Iowa, New Mexico, Seattle, Utah, Atlanta, San Jose-Monterey, Los Angeles, Alaska Native Registry, Rural Georgia, California excluding SF/SJM/LA, Kentucky, Louisiana, New Jersey and Georgia excluding ATL/RG). Based on follow-up of patients into 2009.^d Period survival provides a 2008 estimate of survival by piecing together the most recent conditional survival estimates from several cohorts. It is computed here using three year calendar blocks (2006-2008: 0-1 year survival), (2005-2007: 1-2 year survival), (2004-2006: 2-3 year survival), (2003-2005: 3-4 year survival), (2002-2004: 4-5 years survival).^e Stage at diagnosis is classified using SEER Summary Stage 2000.^f The difference between 1975-1977 and 2002-2008 is statistically significant (p<.05).^g The standard error is between 5 and 10 percentage points.^h The standard error is greater than 10 percentage points.

- Statistic could not be calculated due to fewer than 25 cases during the time period.

Table 10.6
Kaposi Sarcoma

5-Year Relative and Period Survival (Percent) by Race, Sex, Diagnosis Year, Stage and Age

	All Races			Whites			Blacks		
	Total	Males	Females	Total	Males	Females	Total	Males	Females
5-Year Relative Survival (Percent)									
Year of Diagnosis:									
1960-1963 ^a	-	-	-	-	-	-	-	-	-
1970-1973 ^a	-	-	-	-	-	-	-	-	-
1975-1977 ^b	82.2 ^f	82.0 ^f	-	81.6 ^f	80.2 ^f	-	-	-	-
1978-1980 ^b	78.1 ^f	79.1 ^f	73.1 ^g	77.4 ^f	77.5 ^f	72.9 ^g	-	-	-
1981-1983 ^b	35.9	33.2	70.8 ^g	34.4	31.6	68.7 ^g	-	-	-
1984-1986 ^b	12.8	11.5	70.9 ^g	12.6	11.2	70.7 ^g	16.8	15.7	-
1987-1989 ^b	9.8	9.2	69.0 ^g	9.4	8.8	72.3 ^g	12.0	10.8	-
1990-1992 ^b	9.4	8.7	52.6 ^f	9.0	8.3	52.3 ^f	11.5	10.5	-
1993-1995 ^b	21.7	21.0	52.3 ^f	22.3	21.5	60.0 ^g	16.3	15.4	-
1996-1998 ^b	52.4	51.5	72.1 ^g	57.0	55.6	86.5 ^f	38.9	38.3	-
1999-2001 ^b	58.0	57.3	64.0 ^f	64.4	62.6	83.3 ^f	43.5	45.0	-
2002-2008 ^b	67.5 ^e	67.2 ^e	69.0 ^f	77.0 ^e	76.4	76.5 ^f	47.5	47.9	-
5-Year Period Survival (Percent) ^{cd}									
2008	70.8	69.9	77.7	76.6	75.6	85.7	52.1	51.5	-
5-Year Relative Survival (Percent), 2002-2008 ^c									
Age at Diagnosis:									
Ages <45	62.0	62.3	49.2 ^f	68.2	68.1	-	47.2	47.9	32.4 ^g
Ages 45-54	66.4	67.0	-	70.9	71.1	-	48.9 ^f	49.9 ^f	-
Ages 55-64	78.9	79.1	-	83.6	82.9	-	44.5 ^g	42.2 ^g	-
Ages 65-74	80.1	80.8 ^f	75.9 ^g	78.7 ^f	80.2 ^f	71.6 ^g	-	-	-
Ages 75+	88.7	94.5	78.5	89.7	94.4 ^f	81.3 ^f	-	-	-
Ages <65	64.5	64.8	53.9 ^f	70.4	70.4	72.2 ^f	47.4	48.0	37.4 ^f
Ages 65+	87.7	89.7	80.7 ^f	87.9	89.6	82.1 ^f	81.1 ^g	-	-

^a Based on End Results data from a series of hospital registries and one population-based registry.
^b SEER 9 areas (San Francisco, Connecticut, Detroit, Hawaii, Iowa, New Mexico, Seattle, Utah, Atlanta).
Based on follow-up of patients into 2009.
^c SEER 18 areas (San Francisco, Connecticut, Detroit, Hawaii, Iowa, New Mexico, Seattle, Utah, Atlanta, San Jose-Monterey, Los Angeles, Alaska Native Registry, Rural Georgia, California excluding SF/SJM/LA, Kentucky, Louisiana, New Jersey and Georgia excluding ATL/RG).
Based on follow-up of patients into 2009.
^d Period survival provides a 2008 estimate of survival by piecing together the most recent conditional survival estimates from several cohorts. It is computed here using three year calendar blocks (2006-2008: 0-1 year survival), (2005-2007: 1-2 year survival), (2004-2006: 2-3 year survival), (2003-2005: 3-4 year survival), (2002-2004: 4-5 years survival).
^e The difference between 1975-1977 and 2002-2008 is statistically significant (p<.05).
^f The standard error is between 5 and 10 percentage points.
^g The standard error is greater than 10 percentage points.
- Statistic could not be calculated due to fewer than 25 cases during the time period.

Table 11.8
Cancer of the Kidney and Renal Pelvis (Invasive)

5-Year Relative and Period Survival (Percent) by Race, Sex, Diagnosis Year, Stage and Age

	All Races			Whites			Blacks		
	Total	Males	Females	Total	Males	Females	Total	Males	Females
5-Year Relative Survival (Percent)									
Year of Diagnosis:									
1960-1963 ^a	-	-	-	37	36	39	38	38	37
1970-1973 ^a	-	-	-	46	44	50	44	40	49
1975-1977 ^b	50.2	50.3	50.0	49.9	50.2	49.4	49.3	47.9	51.5 ^g
1978-1980 ^b	53.0	52.7	53.4	52.7	52.9	52.2	57.0	51.9	63.4 ^g
1981-1983 ^b	50.2	51.2	48.6	50.1	51.3	48.0	50.7	50.3	51.2
1984-1986 ^b	54.8	55.3	53.8	54.9	55.7	53.7	52.9	49.7	57.8
1987-1989 ^b	56.7	57.1	56.1	57.3	58.1	56.1	54.8	52.7	57.2
1990-1992 ^b	60.3	60.6	59.8	60.8	61.3	60.0	57.2	55.6	58.9
1993-1995 ^b	61.6	61.7	61.3	62.1	62.9	60.8	57.5	54.3	62.0
1996-1998 ^b	62.7	63.1	62.0	62.1	62.7	61.2	66.8	68.2	64.5
1999-2001 ^b	65.0	63.5	67.5	65.1	63.8	67.3	64.0	59.6	69.2
2002-2008 ^b	72.2 ^f	71.9 ^f	72.6 ^f	72.3 ^f	72.2 ^f	72.4 ^f	70.0 ^f	69.2 ^f	71.2 ^f
5-Year Period Survival (Percent) ^{cd}									
2008	72.7	72.6	72.8	72.9	72.9	72.9	71.3	70.8	72.0
Stage Distribution (%) 2002-2008 ^{ee}									
All Stages									
Number of cases	62,776	38,536	24,240	52,267	32,179	20,088	6,638	3,949	2,689
Percent	100%	100%	100%	100%	100%	100%	100%	100%	100%
Localized	62	61	64	62	60	64	68	66	70
Regional	17	18	16	17	18	16	12	13	12
Distant	17	18	16	17	18	16	17	18	15
Unstaged	4	3	4	4	3	4	4	3	4
5-Year Relative Survival (Percent), 2002-2008 ^c									
Age at Diagnosis:									
Ages <45	84.4	83.0	86.5	86.1	84.6	88.4	73.4	71.7	75.6
Ages 45-54	77.6	75.5	81.8	78.1	75.9	82.6	74.0	72.2	77.3
Ages 55-64	72.3	70.7	75.4	72.7	71.0	76.0	68.7	67.9	70.3
Ages 65-74	69.1	69.1	69.3	69.2	69.0	69.6	68.0	69.6	65.8
Ages 75+	56.4	58.9	53.7	57.1	59.9	54.0	50.8	49.7	51.7
Ages <65	76.4	74.5	80.0	77.0	75.0	80.8	71.7	70.3	74.2
Ages 65+	63.2	64.7	61.1	63.4	65.0	61.3	61.3	63.1	59.4
Stage ^{ee} :									
All Stages	70.6	70.5	70.8	70.9	70.8	71.0	68.1	68.1	68.1
Localized	91.1	91.4	90.8	91.8	92.0	91.4	86.0	86.6	85.0
Regional	63.7	65.9	59.7	64.3	66.2	60.8	57.3	62.1	49.2
Distant	11.6	12.1	10.8	11.4	12.0	10.1	11.7	10.8	13.0
Unstaged	34.3	35.9	32.2	33.4	35.2	31.1	33.9	34.6 ^g	33.0 ^g

^a Based on End Results data from a series of hospital registries and one population-based registry.

^b SEER 9 areas (San Francisco, Connecticut, Detroit, Hawaii, Iowa, New Mexico, Seattle, Utah, Atlanta).

Based on follow-up of patients into 2009.

^c SEER 18 areas (San Francisco, Connecticut, Detroit, Hawaii, Iowa, New Mexico, Seattle, Utah, Atlanta, San Jose-Monterey, Los Angeles, Alaska Native Registry, Rural Georgia, California excluding SF/SJM/LA, Kentucky, Louisiana, New Jersey and Georgia excluding ATL/RG).

Based on follow-up of patients into 2009.

^d Period survival provides a 2008 estimate of survival by piecing together the most recent conditional survival estimates from several cohorts. It is computed here using three year calendar blocks (2006-2008: 0-1 year survival), (2005-2007: 1-2 year survival), (2004-2006: 2-3 year survival), (2003-2005: 3-4 year survival), (2002-2004: 4-5 years survival).

^e Stage at diagnosis is classified using SEER Summary Stage 2000.

^f The difference between 1975-1977 and 2002-2008 is statistically significant (p<.05).

^g The standard error is between 5 and 10 percentage points.

^h The standard error is greater than 10 percentage points.

- Statistic could not be calculated due to fewer than 25 cases during the time period.

Table 12.8
Cancer of the Larynx (Invasive)

5-Year Relative and Period Survival (Percent) by Race, Sex, Diagnosis Year, Stage and Age

	All Races			Whites			Blacks		
	Total	Males	Females	Total	Males	Females	Total	Males	Females
5-Year Relative Survival (Percent)									
Year of Diagnosis:									
1960-1963 ^a	-	-	-	53	54	46	-	-	-
1970-1973 ^a	-	-	-	62	63	56	-	-	-
1975-1977 ^b	66.3	66.9	62.6	67.0	67.8	62.4	58.5	57.5	63.4 ^g
1978-1980 ^b	65.4	65.6	64.1	66.3	66.5	64.8	56.9	57.2	55.8 ^g
1981-1983 ^b	68.2	68.4	67.1	69.6	69.8	68.5	56.6	57.3	52.8 ^g
1984-1986 ^b	65.4	66.0	62.2	67.2	67.9	63.9	52.7	52.9	51.1 ^g
1987-1989 ^b	65.8	66.9	61.5	67.2	68.8	61.1	56.1	54.3	61.4 ^g
1990-1992 ^b	66.0	66.9	62.6	67.9	68.6	64.7	53.5	54.1	51.3 ^g
1993-1995 ^b	63.7	65.5	56.5	65.3	67.2	57.3	53.1	54.5	47.4 ^g
1996-1998 ^b	65.0	66.9	58.7	67.0	68.6	61.1	54.0	57.2	44.9 ^g
1999-2001 ^b	63.7	64.6	60.1	65.8	66.8	61.3	49.8	48.8	52.9 ^g
2002-2008 ^b	62.5 ^f	62.8 ^f	61.2	64.9	65.1	63.9	50.9	52.1	46.5
5-Year Period Survival (Percent) ^{cd}									
2008	61.4	62.2	58.2	62.2	62.9	59.0	55.9	56.5	52.6
Stage Distribution (%) 2002-2008 ^{ce}									
All Stages									
Number of cases	16,325	13,150	3,175	13,165	10,588	2,577	2,503	2,001	502
Percent	100%	100%	100%	100%	100%	100%	100%	100%	100%
Localized	57	58	50	59	60	52	46	47	40
Regional	20	18	27	20	18	27	23	21	30
Distant	18	18	17	17	17	16	26	27	24
Unstaged	5	5	6	5	5	6	4	4	5
5-Year Relative Survival (Percent), 2002-2008 ^c									
Age at Diagnosis:									
Ages <45	72.5	71.5	74.7	75.3	74.8	76.7	56.0	53.2 ^g	62.7 ^g
Ages 45-54	61.4	61.7	60.3	64.7	64.8	64.3	49.3	50.4	43.4 ^g
Ages 55-64	60.9	61.6	57.9	61.8	62.5	58.7	54.7	55.6	49.9
Ages 65-74	60.8	62.4	54.1	60.1	61.5	54.2	61.0	63.4	51.1 ^g
Ages 75+	54.8	56.6	47.4	56.0	57.7	48.8	44.0 ^g	44.9 ^g	39.9 ^g
Ages <65	62.1	62.4	61.0	64.0	64.2	63.0	52.9	53.6	49.2
Ages 65+	58.5	60.2	51.5	58.4	60.0	52.1	56.2	58.4	47.5
Stage ^e :									
All Stages	60.5	61.4	56.7	61.4	62.3	57.8	54.0	55.3	48.7
Localized	76.4	77.2	72.6	76.4	77.1	73.1	74.6	76.4	66.3
Regional	41.8	41.6	42.3	42.0	41.6	43.4	40.2	41.0	37.0
Distant	34.8	34.1	38.2	35.4	34.5	39.2	32.3	31.8	34.2 ^g
Unstaged	48.7	50.5	42.6	47.8	49.9	40.2 ^g	45.1 ^g	45.7 ^g	43.3 ^h

^a Based on End Results data from a series of hospital registries and one population-based registry.

^b SEER 9 areas (San Francisco, Connecticut, Detroit, Hawaii, Iowa, New Mexico, Seattle, Utah, Atlanta).

Based on follow-up of patients into 2009.

^c SEER 18 areas (San Francisco, Connecticut, Detroit, Hawaii, Iowa, New Mexico, Seattle, Utah, Atlanta, San Jose-Monterey, Los Angeles, Alaska Native Registry, Rural Georgia, California excluding SF/SJM/LA, Kentucky, Louisiana, New Jersey and Georgia excluding ATL/RG).

Based on follow-up of patients into 2009.

^d Period survival provides a 2008 estimate of survival by piecing together the most recent conditional survival estimates from several cohorts. It is computed here using three year calendar blocks (2006-2008: 0-1 year survival), (2005-2007: 1-2 year survival), (2004-2006: 2-3 year survival), (2003-2005: 3-4 year survival), (2002-2004: 4-5 years survival).

^e Stage at diagnosis is classified using SEER Summary Stage 2000.

^f The difference between 1975-1977 and 2002-2008 is statistically significant (p<.05).

^g The standard error is between 5 and 10 percentage points.

^h The standard error is greater than 10 percentage points.

- Statistic could not be calculated due to fewer than 25 cases during the time period.

Table 13.14
Leukemia

5-Year Relative and Period Survival (Percent) by Race, Sex, Diagnosis Year and Age

	All Races			Whites			Blacks		
	Total	Males	Females	Total	Males	Females	Total	Males	Females
5-Year Relative Survival (Percent)									
Year of Diagnosis:									
1960-1963 ^a	-	-	-	14	-	-	-	-	-
1970-1973 ^a	-	-	-	22	-	-	-	-	-
1975-1977 ^b	34.4	33.3	35.8	34.8	33.8	36.0	33.1	30.0	36.5
1978-1980 ^b	36.3	35.2	37.7	36.9	35.9	38.3	28.5	27.8	29.3
1981-1983 ^b	37.6	37.3	38.0	38.4	38.2	38.6	33.9	33.4	34.3
1984-1986 ^b	40.7	40.3	41.3	41.8	41.5	42.3	32.9	31.9	34.1
1987-1989 ^b	43.1	44.4	41.4	44.1	45.8	41.9	35.3	33.5	37.7
1990-1992 ^b	45.3	44.7	46.0	46.5	46.3	46.6	36.0	31.0	41.4
1993-1995 ^b	47.4	48.2	46.2	48.4	49.3	47.2	41.3	41.4	41.1
1996-1998 ^b	47.9	48.2	47.5	49.2	49.1	49.2	37.8	38.7	36.5
1999-2001 ^b	50.0	51.0	48.6	50.9	51.9	49.5	42.0	42.6	41.3
2002-2008 ^b	58.1 ^e	58.4 ^e	57.6 ^e	58.8 ^e	59.0 ^e	58.4 ^e	51.4 ^e	53.3 ^e	49.2 ^e
5-Year Period Survival (Percent) ^{cd}									
2008	56.0	56.6	55.2	56.1	56.4	55.9	48.6	50.7	46.2
5-Year Relative Survival (Percent), 2002-2008 ^c									
Age at Diagnosis:									
Ages <45	70.6	69.8	71.8	71.6	70.9	72.7	60.4	58.4	63.2
Ages 45-54	63.9	65.6	61.5	64.9	66.3	62.7	55.2	56.8	52.7
Ages 55-64	61.6	61.3	62.3	62.5	61.8	63.7	49.3	50.0	48.3
Ages 65-74	51.7	50.9	53.0	52.8	51.5	54.7	40.5	42.0	38.6
Ages 75+	35.4	34.2	36.5	35.6	34.5	36.7	27.5	24.2	29.4
Ages <65	66.4	66.1	66.8	67.2	66.8	67.8	56.2	55.6	57.0
Ages 65+	42.2	41.9	42.5	42.6	42.2	43.1	33.9	34.5	33.2

^a Based on End Results data from a series of hospital registries and one population-based registry.^b SEER 9 areas (San Francisco, Connecticut, Detroit, Hawaii, Iowa, New Mexico, Seattle, Utah, Atlanta).

Based on follow-up of patients into 2009.

^c SEER 18 areas (San Francisco, Connecticut, Detroit, Hawaii, Iowa, New Mexico, Seattle, Utah, Atlanta, San Jose-Monterey, Los Angeles, Alaska Native Registry, Rural Georgia, California excluding SF/SJM/LA, Kentucky, Louisiana, New Jersey and Georgia excluding ATL/RG).

Based on follow-up of patients into 2009.

^d Period survival provides a 2008 estimate of survival by piecing together the most recent conditional survival estimates from several cohorts. It is computed here using three year calendar blocks (2006-2008: 0-1 year survival), (2005-2007: 1-2 year survival), (2004-2006: 2-3 year survival), (2003-2005: 3-4 year survival), (2002-2004: 4-5 years survival).^e The difference between 1975-1977 and 2002-2008 is statistically significant (p<.05).^f The standard error is between 5 and 10 percentage points.^g The standard error is greater than 10 percentage points.

- Statistic could not be calculated due to fewer than 25 cases during the time period.

Table 13.15
Lymphocytic Leukemia

5-Year Relative and Period Survival (Percent) by Race, Sex, Diagnosis Year and Age

	All Races			Whites			Blacks		
	Total	Males	Females	Total	Males	Females	Total	Males	Females
<u>Acute Lymphocytic Leukemia</u>									
5-Year Relative Survival (Percent)									
Year of Diagnosis:									
1975-1977 ^a	40.9	37.2	46.0	41.2	37.7	46.1	33.5 ^e	-	-
1978-1980 ^a	49.0	45.5	54.3	49.3	45.9	54.3	31.4 ^e	30.9 ^e	-
1981-1983 ^a	50.5	47.2	55.0	51.3	48.1	55.7	42.3 ^e	36.3 ^e	48.4 ^e
1984-1986 ^a	52.3	49.1	56.7	53.1	49.3	58.6	36.0 ^e	43.5 ^e	27.3 ^e
1987-1989 ^a	54.4	53.8	55.1	55.0	55.0	55.0	44.7 ^e	42.0 ^e	47.1 ^e
1990-1992 ^a	58.0	54.6	63.1	57.7	55.0	61.9	57.1 ^e	50.4 ^e	63.3 ^e
1993-1995 ^a	60.0	57.8	63.2	59.6	57.9	62.1	52.6 ^e	44.6 ^e	63.8 ^e
1996-1998 ^b	65.4	64.3	66.7	66.1	63.9	68.9	56.1 ^e	60.3 ^e	50.0 ^e
1999-2001 ^a	63.3	63.1	63.6	64.6	64.9	64.1	55.3 ^e	47.1 ^e	63.0 ^e
2002-2008 ^a	67.9 ^d	66.6 ^d	69.6 ^d	67.9 ^d	66.4 ^d	70.1 ^d	64.0 ^d	66.1	61.9 ^e
5-Year Period Survival (Percent) ^{bc}									
2008	65.7	65.9	65.4	65.3	65.3	65.4	62.7	65.7	58.4
5-Year Relative Survival (Percent), 2002-2008 ^b									
Age at Diagnosis:									
Ages <45	76.3	74.2	79.2	76.5	74.5	79.5	72.0	70.0	75.3
Ages 45-54	27.3	28.6	25.5	25.3	25.6	24.6	30.0 ^e	-	-
Ages 55-64	23.0	19.9	26.2	23.2	19.7	27.2	19.3 ^e	-	-
Ages 65-74	13.1	10.6	15.3	13.3	11.1	15.5	-	-	-
Ages 75+	8.8	13.5	5.9	7.4	11.4	5.4	-	-	-
Ages <65	69.9	68.4	71.9	69.7	68.1	72.1	66.8	65.9	68.4
Ages 65+	11.1	11.4	10.5	10.6	10.8	10.1	0.0	-	0.0
<u>Chronic Lymphocytic Leukemia</u>									
5-Year Relative Survival (Percent)									
Year of Diagnosis:									
1975-1977 ^a	67.4	65.1	70.5	68.2	65.8	71.4	56.5 ^e	55.2 ^e	58.2 ^e
1978-1980 ^a	68.3	65.2	72.5	69.0	65.7	73.4	57.9 ^e	58.5 ^e	57.1 ^e
1981-1983 ^a	66.3	65.8	67.1	66.9	66.6	67.4	57.4 ^e	55.0 ^e	60.5 ^e
1984-1986 ^a	72.7	71.5	74.2	73.0	71.8	74.6	68.0 ^e	66.0 ^e	68.5 ^e
1987-1989 ^a	73.2	73.2	73.1	74.2	74.4	74.0	59.2	58.0 ^e	60.8 ^e
1990-1992 ^a	74.3	72.2	77.2	75.4	73.5	78.2	52.6	44.6 ^e	60.9 ^e
1993-1995 ^a	77.2	77.0	77.4	78.2	77.9	78.5	64.1	63.9 ^e	64.0 ^e
1996-1998 ^b	74.9	73.4	77.1	75.9	74.4	77.9	57.1 ^e	51.5 ^e	63.9 ^e
1999-2001 ^b	77.1	76.7	77.6	77.7	77.2	78.6	63.4	61.4 ^e	64.9 ^e
2002-2008 ^a	82.4 ^d	81.6 ^d	83.6 ^d	82.5 ^d	81.8 ^d	83.7 ^d	75.5 ^d	72.4 ^d	79.7 ^e
5-Year Period Survival (Percent) ^{bc}									
2008	79.4	78.1	81.2	79.4	77.8	81.6	66.2	66.2	65.9
5-Year Relative Survival (Percent), 2002-2008 ^b									
Age at Diagnosis:									
Ages <45	89.0	86.1	93.8	90.2	87.3	95.2	67.9 ^e	-	-
Ages 45-54	91.4	91.3	91.5	91.9	91.8	92.1	80.4	81.2	77.7 ^e
Ages 55-64	87.5	84.9	92.5	88.2	85.9	92.7	71.0	66.5	81.4 ^e
Ages 65-74	82.3	80.0	85.9	83.0	80.2	87.4	68.3	69.7	66.3 ^e
Ages 75+	65.7	62.3	69.2	65.5	62.4	68.7	50.8	37.1 ^e	61.5 ^e
Ages <65	88.8	86.9	92.3	89.5	87.8	92.7	74.0	71.4	80.0
Ages 65+	73.0	70.9	75.6	73.1	70.9	75.8	59.9	56.0	63.5

^a SEER 9 areas (San Francisco, Connecticut, Detroit, Hawaii, Iowa, New Mexico, Seattle, Utah, Atlanta).

Based on follow-up of patients into 2009.

^b SEER 18 areas (San Francisco, Connecticut, Detroit, Hawaii, Iowa, New Mexico, Seattle, Utah, Atlanta, San Jose-Monterey, Los Angeles, Alaska Native Registry, Rural Georgia, California excluding SF/SJM/LA, Kentucky, Louisiana, New Jersey and Georgia excluding ATL/RG).

Based on follow-up of patients into 2009.

^c Period survival provides a 2008 estimate of survival by piecing together the most recent conditional survival estimates from several cohorts. It is computed here using three year calendar blocks (2006-2008: 0-1 year survival), (2005-2007: 1-2 year survival), (2004-2006: 2-3 year survival), (2003-2005: 3-4 year survival), (2002-2004: 4-5 years survival).

^d The difference between 1975-1977 and 2002-2008 is statistically significant (p<.05).

^e The standard error is between 5 and 10 percentage points.

^f The standard error is greater than 10 percentage points.

- Statistic could not be calculated due to fewer than 25 cases during the time period.

Table 13.16
Myeloid Leukemia

5-Year Relative and Period Survival (Percent) by Race, Sex, Diagnosis Year and Age

	All Races			Whites			Blacks		
	Total	Males	Females	Total	Males	Females	Total	Males	Females
<u>Acute Myeloid Leukemia</u>									
5-Year Relative Survival (Percent)									
Year of Diagnosis:									
1975-1977 ^a	6.2	5.5	7.0	5.8	5.4	6.2	10.1	8.2	11.7
1978-1980 ^a	7.6	6.9	8.4	7.1	6.1	8.3	8.8	5.1	12.7
1981-1983 ^a	8.4	7.3	9.8	7.7	6.4	9.3	12.1	15.4 ^e	9.0
1984-1986 ^a	10.7	9.4	12.3	10.4	9.2	11.8	9.8	6.7	12.9
1987-1989 ^a	11.4	9.2	14.1	11.4	9.7	13.2	9.2	4.4	15.7 ^e
1990-1992 ^a	13.7	12.3	15.2	13.4	12.0	15.0	13.5	13.0	13.9
1993-1995 ^a	16.2	14.9	17.6	15.5	14.2	17.0	21.6	20.7 ^e	22.0
1996-1998 ^b	16.9	16.0	18.1	15.6	14.5	17.0	22.0	25.2	18.0
1999-2001 ^a	19.2	18.7	19.8	18.7	17.5	20.0	19.2	24.8	14.1
2002-2008 ^a	24.5 ^d	21.9 ^d	27.3 ^d	24.4 ^d	21.7 ^d	27.3 ^d	22.9 ^d	22.1 ^d	23.4 ^d
5-Year Period Survival (Percent) ^{bc}									
2008	25.1	23.6	26.9	24.7	23.1	26.7	23.7	22.4	24.8
5-Year Relative Survival (Percent), 2002-2008 ^b									
Age at Diagnosis:									
Ages <45	54.0	51.8	56.5	54.9	53.1	56.8	45.4	41.5	49.8
Ages 45-54	37.2	35.8	38.9	38.6	37.5	39.8	29.0	25.3 ^e	33.6 ^e
Ages 55-64	23.3	20.1	27.4	23.4	20.4	27.6	18.2	17.0	20.0
Ages 65-74	10.4	8.6	13.1	10.7	8.6	13.6	9.1	5.3	13.6
Ages 75+	2.0	1.9	2.0	2.0	2.0	1.9	-	0.0	-
Ages <65	40.6	37.7	44.0	40.8	38.1	44.2	35.0	31.9	38.5
Ages 65+	5.4	4.8	6.0	5.4	4.8	6.1	4.9	3.5	6.0
<u>Chronic Myeloid Leukemia</u>									
5-Year Relative Survival (Percent)									
Year of Diagnosis:									
1975-1977 ^a	22.3	20.0	25.3	21.0	19.0	23.7	27.8 ^e	21.7 ^e	35.5 ^e
1978-1980 ^a	23.6	23.0	24.4	23.6	23.5	23.8	21.4 ^e	20.7 ^e	22.7 ^e
1981-1983 ^a	28.6	25.0	32.8	28.9	25.7	32.3	29.7	20.7 ^e	40.2 ^e
1984-1986 ^a	22.7	20.2	26.2	23.2	20.2	27.4	21.4	20.4 ^e	22.2 ^e
1987-1989 ^a	30.6	31.1	29.9	30.6	31.7	29.3	33.3 ^e	28.1 ^e	41.3 ^e
1990-1992 ^a	31.0	29.9	32.5	30.5	30.4	30.7	34.9 ^e	25.5 ^e	44.9 ^e
1993-1995 ^a	35.5	35.2	35.8	35.1	35.1	35.1	35.3 ^e	33.3 ^e	38.6 ^e
1996-1998 ^b	36.9	37.6	35.9	37.9	37.6	38.1	28.3	27.6 ^e	28.9 ^e
1999-2001 ^a	47.1	45.5	49.2	45.7	44.0	48.0	47.6 ^e	47.1 ^e	48.2 ^e
2002-2008 ^a	56.4 ^d	55.7 ^d	57.6 ^d	54.9 ^d	54.0 ^d	56.3 ^d	60.8 ^d	63.9 ^{de}	57.0 ^e
5-Year Period Survival (Percent) ^{bc}									
2008	60.5	59.8	61.4	59.0	58.6	59.6	62.2	59.5	65.1
5-Year Relative Survival (Percent), 2002-2008 ^b									
Age at Diagnosis:									
Ages <45	84.1	83.3	85.4	85.8	84.5	88.0	72.4	72.4	72.3 ^e
Ages 45-54	80.4	77.1	84.8	80.3	77.6	83.9	75.8 ^e	69.7 ^e	81.8 ^e
Ages 55-64	66.7	65.9	67.9	66.7	65.5	68.5	64.1 ^e	67.4 ^e	57.6 ^e
Ages 65-74	47.0	44.1	51.5	47.2	44.5	51.5	35.3 ^e	31.6 ^e	41.7 ^f
Ages 75+	27.5	25.4	29.4	27.1	24.9	29.0	32.3 ^e	22.6 ^e	39.9 ^e
Ages <65	78.0	76.5	80.3	78.4	76.6	81.1	71.5	71.2	71.6
Ages 65+	35.6	34.2	37.2	35.1	33.9	36.4	34.0	27.3 ^e	40.4 ^e

^a SEER 9 areas (San Francisco, Connecticut, Detroit, Hawaii, Iowa, New Mexico, Seattle, Utah, Atlanta).
Based on follow-up of patients into 2009.

^b SEER 18 areas (San Francisco, Connecticut, Detroit, Hawaii, Iowa, New Mexico, Seattle, Utah, Atlanta, San Jose-Monterey, Los Angeles, Alaska Native Registry, Rural Georgia, California excluding SF/SJM/LA, Kentucky, Louisiana, New Jersey and Georgia excluding ATL/RG).
Based on follow-up of patients into 2009.

^c Period survival provides a 2008 estimate of survival by piecing together the most recent conditional survival estimates from several cohorts. It is computed here using three year calendar blocks (2006-2008: 0-1 year survival), (2005-2007: 1-2 year survival), (2004-2006: 2-3 year survival), (2003-2005: 3-4 year survival), (2002-2004: 4-5 years survival).
The difference between 1975-1977 and 2002-2008 is statistically significant (p<.05).

^d The standard error is between 5 and 10 percentage points.

^e The standard error is greater than 10 percentage points.

- Statistic could not be calculated due to fewer than 25 cases during the time period.

Table 14.8
Cancer of the Liver and Intrahepatic Bile Duct (Invasive)

5-Year Relative and Period Survival (Percent) by Race, Sex, Diagnosis Year, Stage and Age

	All Races			Whites			Blacks		
	Total	Males	Females	Total	Males	Females	Total	Males	Females
5-Year Relative Survival (Percent)									
Year of Diagnosis:									
1960-1963 ^a	-	-	-	-	-	-	-	-	-
1970-1973 ^a	-	-	-	-	-	-	-	-	-
1975-1977 ^b	3.4	1.9	6.4	3.4	2.0	5.8	1.8	0.0	5.6
1978-1980 ^b	3.3	2.2	5.4	3.3	2.2	4.8	3.6	3.0	5.0
1981-1983 ^b	3.7	3.1	5.0	4.0	3.2	5.2	2.8	2.1	4.7
1984-1986 ^b	5.7	3.7	9.5	5.7	3.7	9.1	4.3	2.1	9.2
1987-1989 ^b	4.8	3.2	7.9	5.6	3.4	9.2	2.7	1.6	4.9
1990-1992 ^b	5.6	4.9	7.0	6.3	5.2	8.3	2.6	2.0	3.6
1993-1995 ^b	5.6	5.3	6.2	5.3	5.0	5.8	4.1	2.8	7.4
1996-1998 ^b	8.5	8.2	9.2	8.4	7.5	10.2	4.7	5.9	2.1
1999-2001 ^b	11.1	10.6	12.1	10.2	9.4	11.8	7.3	6.8	8.4
2002-2008 ^b	16.3 ^f	16.5 ^f	15.9 ^f	15.6 ^f	16.1 ^f	14.2 ^f	11.3 ^f	9.1	16.9 ^f
5-Year Period Survival (Percent) ^{cd}									
2008	16.5	16.3	16.7	15.7	15.7	15.8	12.2	9.8	17.2
Stage Distribution (%) 2002-2008 ^{ce}									
All Stages									
Number of cases	33,159	23,784	9,375	22,678	16,317	6,361	3,976	2,910	1,066
Percent	100%	100%	100%	100%	100%	100%	100%	100%	100%
Localized	40	40	41	40	40	39	39	39	40
Regional	26	27	24	26	27	23	27	28	26
Distant	19	19	18	18	18	18	22	23	20
Unstaged	15	14	18	16	15	19	12	11	15
5-Year Relative Survival (Percent), 2002-2008 ^c									
Age at Diagnosis:									
Ages <45	32.3	29.9	38.0	35.3	33.6	38.8	21.1	18.4	27.3 ^g
Ages 45-54	19.2	18.1	24.8	19.2	18.4	23.9	12.7	10.0	23.8
Ages 55-64	17.1	15.9	21.7	17.6	16.4	22.2	8.4	6.5	14.3
Ages 65-74	13.0	12.2	14.4	11.0	10.5	12.0	9.9	5.7	15.8
Ages 75+	5.5	6.0	4.9	4.6	4.8	4.3	4.1	3.7	3.9
Ages <65	19.6	18.2	25.3	20.0	18.7	25.4	11.9	9.5	20.2
Ages 65+	9.4	9.6	9.1	7.8	8.0	7.4	7.6	5.1	10.4
Stage ^e :									
All Stages	15.2	15.1	15.6	14.6	14.6	14.4	10.7	8.5	15.9
Localized	27.7	27.9	27.5	26.6	27.3	25.0	19.6	15.9	28.3
Regional	10.1	9.8	11.0	10.0	9.5	11.7	6.2	5.4	8.2
Distant	2.7	2.2	3.9	2.9	2.3	4.3	2.3	1.5	4.5
Unstaged	6.0	5.9	6.2	5.3	5.1	5.7	7.1	5.1	10.3

^a Based on End Results data from a series of hospital registries and one population-based registry.

^b SEER 9 areas (San Francisco, Connecticut, Detroit, Hawaii, Iowa, New Mexico, Seattle, Utah, Atlanta).

Based on follow-up of patients into 2009.

^c SEER 18 areas (San Francisco, Connecticut, Detroit, Hawaii, Iowa, New Mexico, Seattle, Utah, Atlanta, San Jose-Monterey, Los Angeles, Alaska Native Registry, Rural Georgia, California excluding SF/SJM/LA, Kentucky, Louisiana, New Jersey and Georgia excluding ATL/RG).

Based on follow-up of patients into 2009.

^d Period survival provides a 2008 estimate of survival by piecing together the most recent conditional survival estimates from several cohorts. It is computed here using three year calendar blocks (2006-2008: 0-1 year survival), (2005-2007: 1-2 year survival), (2004-2006: 2-3 year survival), (2003-2005: 3-4 year survival), (2002-2004: 4-5 years survival).

^e Stage at diagnosis is classified using SEER Summary Stage 2000.

^f The difference between 1975-1977 and 2002-2008 is statistically significant (p<.05).

^g The standard error is between 5 and 10 percentage points.

^h The standard error is greater than 10 percentage points.

- Statistic could not be calculated due to fewer than 25 cases during the time period.

Table 15.12
Cancer of the Lung and Bronchus (Invasive)

5-Year Relative and Period Survival (Percent) by Race, Sex, Diagnosis Year, Stage and Age

	All Races			Whites			Blacks		
	Total	Males	Females	Total	Males	Females	Total	Males	Females
5-Year Relative Survival (Percent)									
Year of Diagnosis:									
1960-1963 ^a	-	-	-	8	7	11	5	5	6
1970-1973 ^a	-	-	-	10	9	14	7	6	10
1975-1977 ^b	12.3	11.1	15.5	12.3	11.1	15.6	11.4	10.7	13.8
1978-1980 ^b	12.8	11.4	16.3	12.9	11.5	16.3	11.8	9.8	17.9
1981-1983 ^b	13.2	11.6	16.5	13.4	11.8	16.7	11.4	10.2	14.9
1984-1986 ^b	12.9	11.3	16.0	13.1	11.4	16.3	11.2	10.5	12.8
1987-1989 ^b	13.1	12.0	15.0	13.4	12.1	15.4	11.0	10.8	11.2
1990-1992 ^b	13.6	12.1	16.0	14.0	12.5	16.2	10.5	9.3	12.6
1993-1995 ^b	14.4	12.6	16.9	14.6	12.7	17.2	12.8	11.3	15.5
1996-1998 ^b	14.7	13.0	16.9	14.9	13.1	17.1	12.4	10.9	14.9
1999-2001 ^b	15.3	13.2	18.0	15.5	13.3	18.1	12.6	10.8	15.2
2002-2008 ^b	16.9 ^f	14.8 ^f	19.2 ^f	17.3 ^f	15.2 ^f	19.7 ^f	13.5 ^f	12.6 ^f	14.6
5-Year Period Survival (Percent) ^{cd}									
2008	16.8	14.5	19.4	17.1	14.7	19.7	13.8	12.6	15.4
Stage Distribution (%) 2002-2008 ^{ee}									
All Stages									
Number of cases	269,136	144,880	124,256	223,520	118,537	104,983	29,511	16,937	12,574
Percent	100%	100%	100%	100%	100%	100%	100%	100%	100%
Localized	15	14	17	16	14	17	12	11	14
Regional	22	22	22	22	22	22	22	22	22
Distant	56	58	55	55	57	54	60	61	59
Unstaged	6	6	7	7	6	7	5	5	5
5-Year Relative Survival (Percent), 2002-2008 ^c									
Age at Diagnosis:									
Ages <45	26.1	23.1	29.2	27.7	24.3	31.1	20.8	19.9	21.9
Ages 45-54	18.9	15.5	23.2	20.0	16.3	24.5	13.9	12.0	16.5
Ages 55-64	18.4	15.8	21.9	18.9	16.2	22.3	14.6	12.9	17.3
Ages 65-74	16.6	14.3	19.4	16.9	14.5	19.7	13.3	12.7	14.2
Ages 75+	11.6	10.1	13.1	12.0	10.4	13.4	8.5	6.9	9.9
Ages <65	19.0	16.1	22.8	19.7	16.7	23.5	14.8	13.0	17.5
Ages 65+	14.1	12.3	16.1	14.4	12.5	16.3	11.3	10.5	12.1
Stage ^g :									
All Stages	15.9	13.8	18.4	16.3	14.1	18.7	13.0	11.8	14.6
Localized	52.2	47.4	56.8	52.9	47.9	57.5	44.0	40.9	47.4
Regional	25.1	22.9	27.7	25.1	23.0	27.6	22.7	21.3	24.5
Distant	3.7	3.1	4.3	3.6	3.0	4.2	3.5	3.2	3.9
Unstaged	7.9	7.0	8.9	7.5	6.3	8.8	10.1	10.4	9.9

^a Based on End Results data from a series of hospital registries and one population-based registry.

^b SEER 9 areas (San Francisco, Connecticut, Detroit, Hawaii, Iowa, New Mexico, Seattle, Utah, Atlanta).

Based on follow-up of patients into 2009.

^c SEER 18 areas (San Francisco, Connecticut, Detroit, Hawaii, Iowa, New Mexico, Seattle, Utah, Atlanta, San Jose-Monterey, Los Angeles, Alaska Native Registry, Rural Georgia, California excluding SF/SJM/LA, Kentucky, Louisiana, New Jersey and Georgia excluding ATL/RG).

Based on follow-up of patients into 2009.

^d Period survival provides a 2008 estimate of survival by piecing together the most recent conditional survival estimates from several cohorts. It is computed here using three year calendar blocks (2006-2008: 0-1 year survival), (2005-2007: 1-2 year survival), (2004-2006: 2-3 year survival), (2003-2005: 3-4 year survival), (2002-2004: 4-5 years survival).

^e Stage at diagnosis is classified using SEER Summary Stage 2000.

^f The difference between 1975-1977 and 2002-2008 is statistically significant (p<.05).

^g The standard error is between 5 and 10 percentage points.

^h The standard error is greater than 10 percentage points.

- Statistic could not be calculated due to fewer than 25 cases during the time period.

Table 15.13
Small Cell Cancer of the Lung and Bronchus (Invasive)

5-Year Relative and Period Survival (Percent) by Race, Sex, Diagnosis Year, Stage and Age

	All Races			Whites			Blacks		
	Total	Males	Females	Total	Males	Females	Total	Males	Females
5-Year Relative Survival (Percent)									
Year of Diagnosis:									
1975-1977 ^a	3.6	3.1	4.8	3.7	3.1	4.9	3.7	3.8	3.6
1978-1980 ^a	4.2	3.1	6.5	4.3	3.3	6.5	3.1	2.4	5.0
1981-1983 ^a	4.6	3.6	6.3	4.6	3.7	6.1	5.4	4.2	8.4
1984-1986 ^a	4.6	3.5	6.3	4.7	3.6	6.5	3.6	2.2	5.6
1987-1989 ^a	5.1	3.9	6.6	5.1	3.9	6.8	4.0	3.3	5.1
1990-1992 ^a	5.4	4.6	6.4	5.5	4.6	6.6	3.9	3.9	3.9
1993-1995 ^a	6.4	5.2	7.8	6.3	5.1	7.7	6.8	4.5	9.9
1996-1998 ^b	5.9	5.2	6.8	6.1	5.3	6.9	3.8	2.7	5.1
1999-2001 ^a	5.8	4.9	6.8	5.6	4.4	6.9	5.3	6.1	4.3
2002-2008 ^a	6.6 ^e	4.7 ^e	8.4 ^e	6.6 ^e	4.4 ^e	8.7 ^e	5.8 ^e	5.7 ^e	5.9
5-Year Period Survival (Percent) ^{bc}									
2008	6.4	5.1	7.6	6.3	4.8	7.7	7.0	7.0	6.7
Stage Distribution (%) 2002-2008 ^{bd}									
All Stages									
Number of cases	36,397	18,503	17,894	31,993	16,030	15,963	2,984	1,556	1,428
Percent	100%	100%	100%	100%	100%	100%	100%	100%	100%
Localized	5	5	5	5	5	5	5	5	6
Regional	21	19	22	21	19	23	21	19	23
Distant	71	73	69	71	73	68	71	73	68
Unstaged	4	4	4	4	4	4	3	4	3
5-Year Relative Survival (Percent), 2002-2008 ^b									
Age at Diagnosis:									
Ages <45	10.3	9.4	11.2	9.5	8.6	10.2	16.9	18.1 ^f	16.1 ^f
Ages 45-54	9.2	6.8	11.9	9.4	6.8	12.4	6.0	4.4	7.9
Ages 55-64	7.9	5.7	10.3	7.8	5.5	10.4	8.1	7.6	8.3
Ages 65-74	5.8	4.9	6.6	5.8	4.7	6.9	4.0	5.4	3.1
Ages 75+	3.6	3.0	4.2	3.6	3.0	4.0	4.5	2.8	5.9
Ages <65	8.4	6.2	10.8	8.3	6.0	11.0	7.8	7.0	8.6
Ages 65+	4.8	4.1	5.6	4.9	4.0	5.7	4.3	4.5	4.1
Stage ^d :									
All Stages	6.3	5.0	7.7	6.3	4.8	7.7	6.1	5.9	6.3
Localized	22.9	20.6	24.9	23.3	20.6	25.6	17.6	19.0 ^f	16.7 ^f
Regional	14.0	11.9	15.9	13.9	11.6	16.0	14.6	15.0	14.1
Distant	2.8	2.3	3.4	2.8	2.1	3.4	2.7	2.4	2.9
Unstaged	8.5	5.0	11.6	8.7	4.8	12.0	6.4	8.6	3.3

Note: Small Cell Cancer of the Lung and Bronchus includes histologies 8041-8045.

^a SEER 9 areas (San Francisco, Connecticut, Detroit, Hawaii, Iowa, New Mexico, Seattle, Utah, Atlanta).

Based on follow-up of patients into 2009.

^b SEER 18 areas (San Francisco, Connecticut, Detroit, Hawaii, Iowa, New Mexico, Seattle, Utah, Atlanta, San Jose-Monterey, Los Angeles, Alaska Native Registry, Rural Georgia, California excluding SF/SJM/LA, Kentucky, Louisiana, New Jersey and Georgia excluding ATL/RG).

Based on follow-up of patients into 2009.

^c Period survival provides a 2008 estimate of survival by piecing together the most recent conditional survival estimates from several cohorts. It is computed here using three year calendar blocks (2006-2008: 0-1 year survival), (2005-2007: 1-2 year survival), (2004-2006: 2-3 year survival), (2003-2005: 3-4 year survival), (2002-2004: 4-5 years survival).

^d Stage at diagnosis is classified using SEER Summary Stage 2000.

^e The difference between 1975-1977 and 2002-2008 is statistically significant (p<.05).

^f The standard error is between 5 and 10 percentage points.

^g The standard error is greater than 10 percentage points.

- Statistic could not be calculated due to fewer than 25 cases during the time period.

Table 15.14
Non-Small Cell Cancer of the Lung and Bronchus (Invasive)

5-Year Relative and Period Survival (Percent) by Race, Sex, Diagnosis Year, Stage and Age

	All Races			Whites			Blacks		
	Total	Males	Females	Total	Males	Females	Total	Males	Females
5-Year Relative Survival (Percent)									
Year of Diagnosis:									
1975-1977 ^a	13.7	12.4	17.5	13.8	12.4	17.6	12.4	11.5	15.9
1978-1980 ^a	14.5	12.9	18.4	14.6	13.1	18.5	12.9	10.7	19.8
1981-1983 ^a	15.0	13.1	19.0	15.3	13.4	19.4	12.2	11.0	15.9
1984-1986 ^a	14.7	12.8	18.4	15.0	13.0	18.8	12.3	11.6	14.3
1987-1989 ^a	14.8	13.6	17.1	15.2	13.7	17.6	12.0	11.9	12.3
1990-1992 ^a	15.3	13.5	18.2	15.8	14.0	18.6	11.3	9.9	14.1
1993-1995 ^a	15.9	13.8	18.9	16.3	14.0	19.3	13.6	12.1	16.4
1996-1998 ^b	16.3	14.3	18.9	16.6	14.5	19.3	13.5	11.7	16.5
1999-2001 ^a	16.9	14.5	20.0	17.3	14.8	20.2	13.6	11.3	16.8
2002-2008 ^a	18.5 ^e	16.3 ^e	21.1 ^e	19.2 ^e	16.9 ^e	21.7 ^e	14.4 ^e	13.3 ^e	15.7
5-Year Period Survival (Percent) ^{bc}									
2008	18.4	15.9	21.3	18.9	16.3	21.9	14.6	13.1	16.5
Stage Distribution (%) 2002-2008 ^{bd}									
All Stages									
Number of cases	232,739	126,377	106,362	191,527	102,507	89,020	26,527	15,381	11,146
Percent	100%	100%	100%	100%	100%	100%	100%	100%	100%
Localized	17	15	19	17	16	19	13	12	15
Regional	22	23	22	22	23	22	22	22	22
Distant	54	56	52	53	55	51	59	60	58
Unstaged	7	6	7	7	7	8	5	6	5
5-Year Relative Survival (Percent), 2002-2008 ^b									
Age at Diagnosis:									
Ages <45	28.0	24.6	31.3	30.3	26.5	34.0	21.1	20.1	22.5
Ages 45-54	20.7	17.0	25.4	22.3	18.2	27.2	14.8	12.8	17.6
Ages 55-64	20.5	17.6	24.5	21.2	18.3	25.2	15.4	13.5	18.7
Ages 65-74	18.5	15.7	21.9	18.9	16.0	22.4	14.4	13.4	15.9
Ages 75+	12.6	11.0	14.2	13.0	11.3	14.6	8.8	7.3	10.3
Ages <65	21.1	17.9	25.3	22.1	18.8	26.4	15.6	13.7	18.7
Ages 65+	15.5	13.4	17.7	15.8	13.7	18.1	12.0	11.1	13.2
Stage ^d :									
All Stages	17.5	15.1	20.3	18.0	15.5	20.7	13.8	12.4	15.7
Localized	53.6	48.6	58.4	54.3	49.2	59.0	45.2	41.7	49.0
Regional	26.7	24.2	29.8	26.9	24.5	29.7	23.6	21.9	26.0
Distant	3.8	3.3	4.5	3.8	3.2	4.4	3.6	3.3	4.0
Unstaged	7.9	7.1	8.7	7.4	6.4	8.5	10.4	10.5	10.4

Note: Non-Small Cell Cancer of the Lung and Bronchus includes histologies 8000-8040, 8046-9049, 9056-9139, 9141-9589.

^a SEER 9 areas (San Francisco, Connecticut, Detroit, Hawaii, Iowa, New Mexico, Seattle, Utah, Atlanta).

Based on follow-up of patients into 2009.

^b SEER 18 areas (San Francisco, Connecticut, Detroit, Hawaii, Iowa, New Mexico, Seattle, Utah, Atlanta, San Jose-Monterey, Los Angeles, Alaska Native Registry, Rural Georgia, California excluding SF/SJM/LA, Kentucky, Louisiana, New Jersey and Georgia excluding ATL/RG).

Based on follow-up of patients into 2009.

^c Period survival provides a 2008 estimate of survival by piecing together the most recent conditional survival estimates from several cohorts. It is computed here using three year calendar blocks (2006-2008: 0-1 year survival), (2005-2007: 1-2 year survival), (2004-2006: 2-3 year survival), (2003-2005: 3-4 year survival), (2002-2004: 4-5 years survival).

^d Stage at diagnosis is classified using SEER Summary Stage 2000.

^e The difference between 1975-1977 and 2002-2008 is statistically significant ($p < .05$).

^f The standard error is between 5 and 10 percentage points.

^g The standard error is greater than 10 percentage points.

- Statistic could not be calculated due to fewer than 25 cases during the time period.

Table 16.8
Melanoma of the Skin (Invasive)

5-Year Relative and Period Survival (Percent) by Race, Sex, Diagnosis Year, Stage and Age

	All Races			Whites			Blacks		
	Total	Males	Females	Total	Males	Females	Total	Males	Females
5-Year Relative Survival (Percent)									
Year of Diagnosis:									
1960-1963 ^a	-	-	-	60	51	68	-	-	-
1970-1973 ^a	-	-	-	68	62	75	-	-	-
1975-1977 ^b	82.0	77.6	86.3	82.0	77.8	86.3	56.8 ^g	-	-
1978-1980 ^b	82.8	77.8	87.7	82.9	78.0	87.8	59.8 ^h	-	-
1981-1983 ^b	82.8	78.4	87.3	82.8	78.4	87.2	61.9 ^g	-	-
1984-1986 ^b	86.6	82.6	91.1	86.4	82.2	91.0	70.3 ^h	-	-
1987-1989 ^b	88.2	85.0	91.6	88.0	85.0	91.3	78.6 ^g	-	89.5 ^g
1990-1992 ^b	89.3	87.1	91.8	89.3	87.1	91.8	62.1 ^g	-	-
1993-1995 ^b	89.8	87.3	92.7	89.6	87.0	92.6	69.8 ^g	65.5 ^g	-
1996-1998 ^b	91.1	89.6	92.8	90.9	89.3	92.8	73.5 ^g	66.8 ^h	78.7 ^g
1999-2001 ^b	92.3	90.3	94.6	92.3	90.3	94.7	75.2 ^g	74.1 ^g	75.3 ^g
2002-2008 ^b	93.3 ^f	91.5 ^f	95.2 ^f	93.2 ^f	91.4 ^f	95.3 ^f	70.2 ^g	65.9 ^h	72.8 ^g
5-Year Period Survival (Percent) ^{cd}									
2008	91.3	89.4	93.6	91.0	89.1	93.4	68.6	59.7	74.2
Stage Distribution (%) 2002-2008 ^{ce}									
All Stages									
Number of cases	89,474	49,703	39,771	84,222	47,064	37,158	428	179	249
Percent	100%	100%	100%	100%	100%	100%	100%	100%	100%
Localized	84	82	86	84	82	86	56	46	62
Regional	9	10	7	9	10	7	25	28	22
Distant	4	4	3	4	5	3	13	19	9
Unstaged	4	4	4	4	4	4	7	7	7
5-Year Relative Survival (Percent), 2002-2008 ^c									
Age at Diagnosis:									
Ages <45	94.5	91.3	96.7	94.3	90.9	96.6	83.4	66.8 ^g	92.2
Ages 45-54	92.1	89.8	94.8	91.8	89.5	94.6	71.6 ^g	62.1 ^h	78.6 ^g
Ages 55-64	91.3	89.6	94.1	91.0	89.3	93.9	68.2 ^g	49.1 ^h	83.1 ^g
Ages 65-74	90.0	88.5	92.5	89.8	88.3	92.2	68.3 ^g	61.3 ^h	74.2 ^g
Ages 75+	85.3	85.5	84.9	84.9	85.1	84.6	62.5 ^g	65.2 ^h	58.3 ^h
Ages <65	92.7	90.2	95.5	92.4	89.8	95.3	76.1	60.0 ^g	86.6
Ages 65+	87.8	87.3	88.7	87.5	87.0	88.4	66.0 ^g	65.0 ^g	66.7 ^g
Stage ^e :									
All Stages	91.2	89.2	93.6	90.9	88.9	93.4	72.0	62.5 ^g	78.5
Localized	98.2	97.6	98.8	98.0	97.4	98.6	92.2	84.0 ^g	96.3
Regional	62.4	59.4	67.2	62.6	59.7	67.6	50.0 ^g	48.3 ^g	50.5 ^g
Distant	15.1	14.2	16.8	14.9	14.0	16.6	27.1 ^g	26.9 ^g	-
Unstaged	75.8	72.1	80.1	74.7	71.1	79.0	62.4 ^h	-	-

^a Based on End Results data from a series of hospital registries and one population-based registry.

^b SEER 9 areas (San Francisco, Connecticut, Detroit, Hawaii, Iowa, New Mexico, Seattle, Utah, Atlanta).

Based on follow-up of patients into 2009.

^c SEER 18 areas (San Francisco, Connecticut, Detroit, Hawaii, Iowa, New Mexico, Seattle, Utah, Atlanta, San Jose-Monterey, Los Angeles, Alaska Native Registry, Rural Georgia, California excluding SF/SJM/LA, Kentucky, Louisiana, New Jersey and Georgia excluding ATL/RG).

Based on follow-up of patients into 2009.

^d Period survival provides a 2008 estimate of survival by piecing together the most recent conditional survival estimates from several cohorts. It is computed here using three year calendar blocks (2006-2008: 0-1 year survival), (2005-2007: 1-2 year survival), (2004-2006: 2-3 year survival), (2003-2005: 3-4 year survival), (2002-2004: 4-5 years survival).

^e Stage at diagnosis is classified using SEER Summary Stage 2000.

^f The difference between 1975-1977 and 2002-2008 is statistically significant (p<.05).

^g The standard error is between 5 and 10 percentage points.

^h The standard error is greater than 10 percentage points.

- Statistic could not be calculated due to fewer than 25 cases during the time period.

Table 17.4
Mesothelioma

5-Year Relative and Period Survival (Percent) by Race, Sex, Diagnosis Year, Stage and Age

	All Races			Whites			Blacks		
	Total	Males	Females	Total	Males	Females	Total	Males	Females
5-Year Relative Survival (Percent)									
Year of Diagnosis:									
1960-1963 ^a	-	-	-	-	-	-	-	-	-
1970-1973 ^a	-	-	-	-	-	-	-	-	-
1975-1977 ^b	9.7	3.0	26.8	10.4	3.4	27.5 ^f	-	-	-
1978-1980 ^b	6.0	5.5	8.1	5.9	5.2	8.7	-	-	-
1981-1983 ^b	7.7	5.3	15.1	8.1	5.4	16.2	-	-	-
1984-1986 ^b	6.6	4.3	13.9	6.1	3.7	14.1	-	-	-
1987-1989 ^b	6.3	4.6	12.2	6.4	4.8	12.1	4.8	-	-
1990-1992 ^b	7.8	4.4	20.7	7.4	4.1	20.1	12.6 ^f	11.8 ^f	-
1993-1995 ^b	6.5	3.2	18.6	5.9	2.8	17.9	9.0	8.0 ^f	-
1996-1998 ^b	9.9	8.4	15.2	10.1	8.4	16.1	11.7 ^f	-	-
1999-2001 ^b	7.3	5.1	15.5	6.7	4.8	14.1	-	-	-
2002-2008 ^b	7.0	4.8 ^e	13.7	6.8	4.5 ^e	14.2	9.5	14.0 ^f	-
5-Year Period Survival (Percent) ^{cd}									
2008	8.3	5.9	16.3	7.8	5.5	15.6	12.2	9.4	-
5-Year Relative Survival (Percent), 2002-2008 ^c									
Age at Diagnosis:									
Ages <45	40.6	32.3 ^f	50.9 ^f	37.2	28.5 ^f	49.6 ^f	-	-	-
Ages 45-54	15.6	12.6	19.9	16.6	14.1	20.3	12.4 ^f	-	-
Ages 55-64	7.5	7.0	9.4	7.4	6.5	10.5	11.2 ^f	18.3 ^f	-
Ages 65-74	7.1	6.6	9.5	7.1	6.5	10.0	5.8	5.9 ^f	-
Ages 75+	3.2	1.5	8.4	3.3	1.5	8.7	-	-	-
Ages <65	13.4	10.5	20.4	12.8	9.9	20.0	17.0	15.9 ^f	19.9 ^f
Ages 65+	4.8	3.8	8.9	4.9	3.7	9.3	3.8	4.2	-

^a Based on End Results data from a series of hospital registries and one population-based registry.
^b SEER 9 areas (San Francisco, Connecticut, Detroit, Hawaii, Iowa, New Mexico, Seattle, Utah, Atlanta).
Based on follow-up of patients into 2009.
^c SEER 18 areas (San Francisco, Connecticut, Detroit, Hawaii, Iowa, New Mexico, Seattle, Utah, Atlanta, San Jose-Monterey, Los Angeles, Alaska Native Registry, Rural Georgia, California excluding SF/SJM/LA, Kentucky, Louisiana, New Jersey and Georgia excluding ATL/RG).
Based on follow-up of patients into 2009.
^d Period survival provides a 2008 estimate of survival by piecing together the most recent conditional survival estimates from several cohorts. It is computed here using three year calendar blocks (2006-2008: 0-1 year survival), (2005-2007: 1-2 year survival), (2004-2006: 2-3 year survival), (2003-2005: 3-4 year survival), (2002-2004: 4-5 years survival).
^e The difference between 1975-1977 and 2002-2008 is statistically significant (p<.05).
^f The standard error is between 5 and 10 percentage points.
^g The standard error is greater than 10 percentage points.
- Statistic could not be calculated due to fewer than 25 cases during the time period.

Table 18.8
Myeloma

5-Year Relative and Period Survival (Percent) by Race, Sex, Diagnosis Year and Age

	All Races			Whites			Blacks		
	Total	Males	Females	Total	Males	Females	Total	Males	Females
5-Year Relative Survival (Percent)									
Year of Diagnosis:									
1960-1963 ^a	-	-	-	12	13	10	-	-	-
1970-1973 ^a	-	-	-	19	20	17	-	-	-
1975-1977 ^b	25.1	24.5	25.8	24.5	24.0	25.1	30.3	31.0	29.6
1978-1980 ^b	26.0	24.6	27.4	25.0	24.5	25.6	31.9	27.4	36.2
1981-1983 ^b	27.8	25.9	29.7	27.5	25.7	29.3	28.9	29.8	27.9
1984-1986 ^b	27.4	27.9	27.0	26.2	26.1	26.3	32.1	33.3	30.9
1987-1989 ^b	27.5	29.1	25.9	27.2	29.3	25.0	30.3	30.3	30.3
1990-1992 ^b	29.5	30.8	28.1	28.6	29.8	27.2	34.6	38.6	30.8
1993-1995 ^b	32.0	32.4	31.6	30.9	31.6	30.2	35.6	34.8	36.0
1996-1998 ^b	32.6	34.8	30.1	32.4	34.7	29.8	31.2	32.9	30.0
1999-2001 ^b	34.2	36.9	31.1	34.2	37.0	30.7	33.1	35.9	30.7
2002-2008 ^b	42.6 ^f	43.8 ^f	41.2 ^f	42.9 ^f	44.9 ^f	40.4 ^f	42.7 ^f	41.5 ^f	43.9 ^f
5-Year Period Survival (Percent) ^{cd}									
2008	42.2	43.2	40.9	42.3	44.0	40.1	41.4	40.5	42.2
Stage Distribution (%) 2002-2008 ^{ee}									
All Stages									
Number of cases	26,471	14,301	12,170	19,665	10,931	8,734	5,055	2,469	2,586
Percent	100%	100%	100%	100%	100%	100%	100%	100%	100%
Localized	5	6	4	5	6	4	4	4	3
Regional	0	0	0	0	0	0	0	0	0
Distant	95	94	96	95	94	96	96	96	97
Unstaged	0	0	0	0	0	0	0	0	0
5-Year Relative Survival (Percent), 2002-2008 ^c									
Age at Diagnosis:									
Ages <45	63.9	65.4	61.8	63.9	66.9	58.4	63.1	60.9	65.3
Ages 45-54	57.2	55.5	59.6	60.2	58.6	62.7	49.0	44.6	53.6
Ages 55-64	50.8	50.2	51.6	51.2	50.6	52.0	48.6	46.3	51.2
Ages 65-74	39.0	38.2	39.9	39.1	38.9	39.5	36.8	35.2	38.5
Ages 75+	24.5	25.8	23.4	24.5	26.7	22.5	23.6	21.1	25.1
Ages <65	54.4	53.6	55.4	55.4	55.0	56.1	50.7	47.4	54.1
Ages 65+	31.3	32.2	30.4	31.2	32.8	29.4	30.7	29.6	31.6
Stage ^{ee} :									
All Stages	41.1	42.1	40.1	40.9	42.6	38.8	41.0	39.5	42.4
Localized	67.0	71.6	59.4	67.1	72.3	57.8	58.1	59.7 ^g	55.8 ^g
Regional	-	-	-	-	-	-	-	-	-
Distant	39.8	40.3	39.3	39.4	40.6	38.0	40.3	38.6	41.9
Unstaged	-	-	-	-	-	-	-	-	-

^a Based on End Results data from a series of hospital registries and one population-based registry.^b SEER 9 areas (San Francisco, Connecticut, Detroit, Hawaii, Iowa, New Mexico, Seattle, Utah, Atlanta).

Based on follow-up of patients into 2009.

^c SEER 18 areas (San Francisco, Connecticut, Detroit, Hawaii, Iowa, New Mexico, Seattle, Utah, Atlanta, San Jose-Monterey, Los Angeles, Alaska Native Registry, Rural Georgia, California excluding SF/SJM/LA, Kentucky, Louisiana, New Jersey and Georgia excluding ATL/RG).

Based on follow-up of patients into 2009.

^d Period survival provides a 2008 estimate of survival by piecing together the most recent conditional survival estimates from several cohorts. It is computed here using three year calendar blocks (2006-2008: 0-1 year survival), (2005-2007: 1-2 year survival), (2004-2006: 2-3 year survival), (2003-2005: 3-4 year survival), (2002-2004: 4-5 years survival).^e Stage at diagnosis is classified using SEER Summary Stage 2000.^f The difference between 1975-1977 and 2002-2008 is statistically significant (p<.05).^g The standard error is between 5 and 10 percentage points.^h The standard error is greater than 10 percentage points.

- Statistic could not be calculated due to fewer than 25 cases during the time period.

Table 19.8
Non-Hodgkin Lymphoma

5-Year Relative and Period Survival (Percent) by Race, Sex, Diagnosis Year and Age

	All Races			Whites			Blacks		
	Total	Males	Females	Total	Males	Females	Total	Males	Females
5-Year Relative Survival (Percent)									
Year of Diagnosis:									
1960-1963 ^a	-	-	-	31	31	31	-	-	-
1970-1973 ^a	-	-	-	41	39	43	-	-	-
1975-1977 ^b	46.7	45.6	47.8	47.0	46.4	47.6	48.4	42.6	54.9 ^g
1978-1980 ^b	48.1	46.2	50.1	48.1	46.4	49.9	51.1	47.1	56.7
1981-1983 ^b	50.9	50.5	51.2	51.1	50.7	51.4	49.9	49.4	50.4
1984-1986 ^b	51.8	50.2	53.5	52.1	50.8	53.7	47.1	44.5	50.4
1987-1989 ^b	51.1	47.9	55.1	51.6	48.4	55.4	46.4	41.7	52.1
1990-1992 ^b	50.9	46.8	56.0	51.7	47.7	56.7	42.1	38.2	47.6
1993-1995 ^b	52.7	49.0	57.6	53.5	50.0	57.9	42.0	36.0	53.5
1996-1998 ^b	59.0	57.2	61.2	59.7	57.8	61.8	54.0	52.5	56.3
1999-2001 ^b	64.1	61.6	67.1	65.1	63.0	67.6	55.8	49.0	63.8
2002-2008 ^b	70.6 ^f	69.5 ^f	71.9 ^f	71.8 ^f	71.0 ^f	72.7 ^f	62.8 ^f	58.7 ^f	67.4 ^f
5-Year Period Survival (Percent) ^{cd}									
2008	69.0	67.6	70.6	69.6	68.5	70.9	60.8	56.5	65.8
Stage Distribution (%) 2002-2008 ^{ee}									
All Stages									
Number of cases	89,792	48,135	41,657	75,733	40,620	35,113	7,103	3,834	3,269
Percent	100%	100%	100%	100%	100%	100%	100%	100%	100%
Localized	28	27	30	28	27	29	27	25	30
Regional	15	15	16	15	15	16	15	14	16
Distant	48	50	46	49	51	46	50	54	47
Unstaged	8	8	9	8	8	9	8	7	8
5-Year Relative Survival (Percent), 2002-2008 ^c									
Age at Diagnosis:									
Ages <45	77.5	74.5	82.4	79.5	76.3	85.1	63.9	61.1	68.0
Ages 45-54	77.3	74.0	82.2	79.0	75.8	83.7	63.6	57.4	72.4
Ages 55-64	74.0	70.6	78.4	74.9	71.8	79.0	63.8	58.0	71.1
Ages 65-74	68.6	65.3	72.1	69.3	66.2	72.6	59.9	50.9	67.8
Ages 75+	52.3	51.5	53.0	53.0	52.4	53.5	47.1	45.3	47.8
Ages <65	76.1	72.9	80.6	77.4	74.4	81.9	63.9	59.2	70.4
Ages 65+	59.7	58.3	60.9	60.2	59.0	61.3	54.5	49.2	58.2
Stage ^e :									
All Stages	68.2	66.6	70.0	68.8	67.5	70.2	61.3	57.0	66.2
Localized	81.2	80.3	82.1	81.5	80.9	82.1	76.7	72.6	80.9
Regional	71.9	71.2	72.6	72.5	72.1	72.8	66.9	63.5	70.3
Distant	59.9	58.5	61.8	61.0	59.8	62.6	51.1	47.9	55.3
Unstaged	65.0	63.5	66.6	63.8	62.4	65.3	60.5	55.3	65.0

^a Based on End Results data from a series of hospital registries and one population-based registry.

^b SEER 9 areas (San Francisco, Connecticut, Detroit, Hawaii, Iowa, New Mexico, Seattle, Utah, Atlanta).
Based on follow-up of patients into 2009.

^c SEER 18 areas (San Francisco, Connecticut, Detroit, Hawaii, Iowa, New Mexico, Seattle, Utah, Atlanta, San Jose-Monterey, Los Angeles, Alaska Native Registry, Rural Georgia, California excluding SF/SJM/LA, Kentucky, Louisiana, New Jersey and Georgia excluding ATL/RG).
Based on follow-up of patients into 2009.

^d Period survival provides a 2008 estimate of survival by piecing together the most recent conditional survival estimates from several cohorts. It is computed here using three year calendar blocks (2006-2008: 0-1 year survival), (2005-2007: 1-2 year survival), (2004-2006: 2-3 year survival), (2003-2005: 3-4 year survival), (2002-2004: 4-5 years survival).

^e Stage at diagnosis is classified using SEER Summary Stage 2000.

^f The difference between 1975-1977 and 2002-2008 is statistically significant (p<.05).

^g The standard error is between 5 and 10 percentage points.

^h The standard error is greater than 10 percentage points.

- Statistic could not be calculated due to fewer than 25 cases during the time period.

Table 20.10
Cancer of the Oral Cavity and Pharynx (Invasive)

5-Year Relative and Period Survival (Percent) by Race, Sex, Diagnosis Year, Stage and Age

	All Races			Whites			Blacks		
	Total	Males	Females	Total	Males	Females	Total	Males	Females
5-Year Relative Survival (Percent)									
Year of Diagnosis:									
1960-1963 ^a	-	-	-	45	-	-	-	-	-
1970-1973 ^a	-	-	-	43	-	-	-	-	-
1975-1977 ^b	52.9	51.9	55.1	54.4	54.1	55.1	36.1	29.8	49.0
1978-1980 ^b	53.5	52.0	56.7	55.5	54.6	57.5	35.0	30.0	46.1
1981-1983 ^b	51.9	50.4	55.2	54.2	53.1	56.6	31.4	26.0	45.9
1984-1986 ^b	54.2	51.8	59.1	56.5	55.0	59.4	35.1	29.5	49.4
1987-1989 ^b	53.9	51.2	59.4	56.3	54.3	60.4	33.9	29.8	44.2
1990-1992 ^b	55.5	53.3	60.2	58.1	56.6	61.2	32.5	27.8	45.7
1993-1995 ^b	57.8	56.4	60.7	60.3	59.7	61.4	38.0	33.0	50.7
1996-1998 ^b	57.9	56.4	61.1	60.0	59.3	61.5	36.3	31.3	49.2
1999-2001 ^b	60.4	59.4	62.3	62.3	62.3	62.4	44.3	39.0	57.2
2002-2008 ^b	64.6 ^f	64.0 ^f	65.7 ^f	66.5 ^f	66.5 ^f	66.5 ^f	45.2 ^f	41.3 ^f	52.7
5-Year Period Survival (Percent) ^{cd}									
2008	62.3	61.4	64.6	63.9	63.4	65.2	43.2	38.6	52.8
Stage Distribution (%) 2002-2008 ^{ee}									
All Stages									
Number of cases	48,917	34,181	14,736	39,932	28,144	11,788	4,861	3,378	1,483
Percent	100%	100%	100%	100%	100%	100%	100%	100%	100%
Localized	32	28	42	33	29	43	20	16	31
Regional	47	50	38	47	50	38	51	55	43
Distant	16	17	14	14	15	12	23	25	20
Unstaged	6	5	7	6	5	7	5	5	6
5-Year Relative Survival (Percent), 2002-2008 ^c									
Age at Diagnosis:									
Ages <45	78.3	75.0	83.9	80.5	78.1	84.9	64.0	54.2	77.2
Ages 45-54	66.1	65.1	69.1	69.8	69.0	72.6	39.7	36.9	46.3
Ages 55-64	61.9	60.4	66.8	63.9	62.7	68.1	40.3	37.5	49.9
Ages 65-74	56.2	54.8	59.5	58.1	57.5	59.3	34.1	27.2	51.1
Ages 75+	49.2	49.2	49.2	50.5	50.4	50.7	36.6	32.4	39.8
Ages <65	66.4	64.5	72.0	68.8	67.3	73.5	44.6	39.9	56.2
Ages 65+	52.9	52.4	53.7	54.5	54.5	54.4	35.0	28.6	45.6
Stage ^{ee} :									
All Stages	61.5	60.5	63.6	63.3	62.9	64.1	42.1	37.2	53.0
Localized	82.4	81.6	83.5	82.6	82.2	83.3	75.4	68.5	82.4
Regional	57.3	58.6	53.3	59.5	61.4	53.5	37.8	35.9	42.9
Distant	34.9	34.4	36.2	35.3	35.3	35.2	24.2	21.8	30.6
Unstaged	50.5	49.1	53.2	50.3	49.2	52.6	35.7	30.1	45.6 ^g

^a Based on End Results data from a series of hospital registries and one population-based registry.

^b SEER 9 areas (San Francisco, Connecticut, Detroit, Hawaii, Iowa, New Mexico, Seattle, Utah, Atlanta).

Based on follow-up of patients into 2009.

^c SEER 18 areas (San Francisco, Connecticut, Detroit, Hawaii, Iowa, New Mexico, Seattle, Utah, Atlanta, San Jose-Monterey, Los Angeles, Alaska Native Registry, Rural Georgia, California excluding SF/SJM/LA, Kentucky, Louisiana, New Jersey and Georgia excluding ATL/RG).

Based on follow-up of patients into 2009.

^d Period survival provides a 2008 estimate of survival by piecing together the most recent conditional survival estimates from several cohorts. It is computed here using three year calendar blocks (2006-2008: 0-1 year survival), (2005-2007: 1-2 year survival), (2004-2006: 2-3 year survival), (2003-2005: 3-4 year survival), (2002-2004: 4-5 years survival).

^e Stage at diagnosis is classified using SEER Summary Stage 2000.

^f The difference between 1975-1977 and 2002-2008 is statistically significant (p<.05).

^g The standard error is between 5 and 10 percentage points.

^h The standard error is greater than 10 percentage points.

- Statistic could not be calculated due to fewer than 25 cases during the time period.

Table 21.8
Cancer of the Ovary(Invasive)

5-Year Relative and Period Survival (Percent) by Race, Diagnosis Year, Stage and Age

	All Races, Females			White Females			Black Females		
	All	<65	65+	All	<65	65+	All	<65	65+
5-Year Relative Survival (Percent)									
Year of Diagnosis:									
1960-1963 ^a	-	-	-	32	-	-	32	-	-
1970-1973 ^a	-	-	-	36	-	-	32	-	-
1975-1977 ^b	36.1	44.2	21.5	35.3	43.6	21.2	41.9	48.9	25.0 ^g
1978-1980 ^b	37.7	47.3	22.2	36.9	46.5	22.4	38.9	49.3	12.8
1981-1983 ^b	39.2	50.4	23.5	38.8	50.4	23.6	37.6	45.5	22.6
1984-1986 ^b	38.5	49.5	24.2	37.6	48.5	23.9	39.4	52.2	21.2
1987-1989 ^b	38.3	51.1	23.7	38.2	51.3	24.0	33.8	46.9	17.6
1990-1992 ^b	40.7	55.5	24.4	40.5	56.1	24.3	36.2	49.7	17.5
1993-1995 ^b	41.7	55.8	26.7	40.8	55.5	26.2	41.9	55.4	26.9
1996-1998 ^b	43.9	57.1	28.4	43.3	56.7	28.4	39.2	53.1	20.7
1999-2001 ^b	43.9	55.8	29.1	43.6	56.3	29.0	35.7	44.2	22.3
2002-2008 ^b	43.2 ^f	56.1 ^f	26.4 ^f	42.8 ^f	56.1 ^f	26.8 ^f	35.6	43.9	21.5
5-Year Period Survival (Percent) ^{cd}									
2008	44.0	56.9	27.0	43.6	56.8	27.5	35.8	46.0	19.4
Stage Distribution (%) 2002-2008 ^{ee}									
All Stages									
Number of cases	33,667	18,640	15,027	28,253	15,169	13,084	2,715	1,604	1,111
Percent	100%	100%	100%	100%	100%	100%	100%	100%	100%
Localized	15	20	7	14	20	7	15	20	7
Regional	17	21	13	17	21	13	15	16	12
Distant	61	55	69	62	56	70	62	58	68
Unstaged	7	4	10	7	3	10	8	6	12
5-Year Relative Survival (Percent), 2002-2008 ^c									
Age at Diagnosis:									
Ages <45	73.6	-	-	73.3	-	-	69.4	-	-
Ages 45-54	57.6	-	-	58.4	-	-	39.4	-	-
Ages 55-64	45.3	-	-	45.8	-	-	32.4	-	-
Ages 65-74	36.0	-	-	36.8	-	-	25.0	-	-
Ages 75+	20.2	-	-	20.7	-	-	15.3	-	-
Ages <65	56.4	-	-	56.4	-	-	46.1	-	-
Ages 65+	27.3	-	-	27.8	-	-	20.1	-	-
Stage ^e :									
All Stages	43.7	56.4	27.3	43.5	56.4	27.8	36.0	46.1	20.1
Localized	91.5	92.7	87.3	91.5	92.8	87.4	88.9	90.2	80.4 ^g
Regional	71.9	79.6	56.1	72.5	80.3	57.4	55.2	64.1	37.2 ^g
Distant	26.9	35.0	18.5	27.3	35.7	19.1	19.0	24.6	11.7
Unstaged	22.0	48.8	10.1	20.3	46.7	10.2	29.7	50.7 ^g	13.6

Ovary excludes borderline cases or histologies 8442, 8451, 8462, 8472, and 8473.

^a Based on End Results data from a series of hospital registries and one population-based registry.^b SEER 9 areas (San Francisco, Connecticut, Detroit, Hawaii, Iowa, New Mexico, Seattle, Utah, Atlanta).

Based on follow-up of patients into 2009.

^c SEER 18 areas (San Francisco, Connecticut, Detroit, Hawaii, Iowa, New Mexico, Seattle, Utah, Atlanta, San Jose-Monterey, Los Angeles, Alaska Native Registry, Rural Georgia, California excluding SF/SJM/LA, Kentucky, Louisiana, New Jersey and Georgia excluding ATL/RG).

Based on follow-up of patients into 2009.

^d Period survival provides a 2008 estimate of survival by piecing together the most recent conditional survival estimates from several cohorts. It is computed here using three year calendar blocks (2006-2008: 0-1 year survival), (2005-2007: 1-2 year survival), (2004-2006: 2-3 year survival), (2003-2005: 3-4 year survival), (2002-2004: 4-5 years survival).^e Stage at diagnosis is classified using SEER Summary Stage 2000.^f The difference between 1975-1977 and 2002-2008 is statistically significant (p<.05).^g The standard error is between 5 and 10 percentage points.^h The standard error is greater than 10 percentage points.

- Statistic could not be calculated due to fewer than 25 cases during the time period.

Table 22.8
Cancer of the Pancreas (Invasive)

5-Year Relative and Period Survival (Percent) by Race, Sex, Diagnosis Year, Stage and Age

	All Races			Whites			Blacks		
	Total	Males	Females	Total	Males	Females	Total	Males	Females
5-Year Relative Survival (Percent)									
Year of Diagnosis:									
1960-1963 ^a	-	-	-	1	1	2	1	0	3
1970-1973 ^a	-	-	-	2	2	2	2	0	3
1975-1977 ^b	2.4	2.5	2.2	2.5	2.6	2.3	2.3	2.6	1.9
1978-1980 ^b	2.8	2.7	3.0	2.5	2.6	2.5	5.6	4.1	7.0
1981-1983 ^b	2.8	2.4	3.2	2.6	2.2	3.0	3.6	3.7	3.2
1984-1986 ^b	2.9	2.3	3.4	2.6	2.1	3.1	4.6	3.9	5.1
1987-1989 ^b	3.5	3.3	3.8	3.2	3.1	3.3	5.5	5.1	5.8
1990-1992 ^b	4.3	4.1	4.5	4.4	4.2	4.6	3.7	3.2	4.1
1993-1995 ^b	4.0	3.7	4.3	3.9	3.6	4.3	3.4	3.3	3.5
1996-1998 ^b	4.4	4.6	4.2	4.2	4.7	3.6	3.4	3.1	3.5
1999-2001 ^b	5.0	5.1	4.9	4.9	5.3	4.4	5.5	3.7	7.2
2002-2008 ^b	6.0 ^f	5.6 ^f	6.4 ^f	6.2 ^f	5.9 ^f	6.5 ^f	4.8 ^f	4.5 ^f	5.0 ^f
5-Year Period Survival (Percent) ^{cd}									
2008	6.1	5.5	6.6	6.1	5.6	6.5	5.3	4.7	5.7
Stage Distribution (%) 2002-2008 ^{ee}									
All Stages									
Number of cases	52,378	25,697	26,681	42,170	20,932	21,238	6,335	2,857	3,478
Percent	100%	100%	100%	100%	100%	100%	100%	100%	100%
Localized	8	7	10	8	7	10	9	8	10
Regional	27	27	27	27	27	27	25	25	25
Distant	53	56	50	52	56	49	56	60	53
Unstaged	12	10	14	12	10	14	10	8	12
5-Year Relative Survival (Percent), 2002-2008 ^c									
Age at Diagnosis:									
Ages <45	21.9	17.4	27.4	21.7	17.9	26.6	19.7	17.1	22.4
Ages 45-54	9.7	8.3	11.7	9.7	8.6	11.5	8.1	6.6	9.9
Ages 55-64	6.6	5.4	8.3	6.9	5.7	8.5	4.4	2.2	7.0
Ages 65-74	5.0	4.5	5.6	5.1	4.7	5.5	4.0	3.6	4.2
Ages 75+	3.0	3.1	2.9	3.1	3.0	3.1	2.4	4.5	1.7
Ages <65	9.0	7.4	11.3	9.1	7.6	11.2	7.1	5.0	9.5
Ages 65+	3.8	3.8	3.9	3.9	3.8	3.9	3.2	4.0	2.7
Stage ^e :									
All Stages	5.8	5.4	6.1	5.7	5.4	6.0	5.0	4.6	5.4
Localized	23.3	21.6	24.5	23.2	22.0	23.8	18.9	13.7	21.4
Regional	8.9	8.4	9.3	8.9	8.5	9.2	8.1	8.5	7.9
Distant	1.8	1.9	1.7	1.9	2.0	1.7	1.3	1.2	1.3
Unstaged	3.9	4.6	3.4	3.5	4.0	3.1	6.0	8.2	4.8

^a Based on End Results data from a series of hospital registries and one population-based registry.

^b SEER 9 areas (San Francisco, Connecticut, Detroit, Hawaii, Iowa, New Mexico, Seattle, Utah, Atlanta).

Based on follow-up of patients into 2009.

^c SEER 18 areas (San Francisco, Connecticut, Detroit, Hawaii, Iowa, New Mexico, Seattle, Utah, Atlanta, San Jose-Monterey, Los Angeles, Alaska Native Registry, Rural Georgia, California excluding SF/SJM/LA, Kentucky, Louisiana, New Jersey and Georgia excluding ATL/RG).

Based on follow-up of patients into 2009.

^d Period survival provides a 2008 estimate of survival by piecing together the most recent conditional survival estimates from several cohorts. It is computed here using three year calendar blocks (2006-2008: 0-1 year survival), (2005-2007: 1-2 year survival), (2004-2006: 2-3 year survival), (2003-2005: 3-4 year survival), (2002-2004: 4-5 years survival).

^e Stage at diagnosis is classified using SEER Summary Stage 2000.

^f The difference between 1975-1977 and 2002-2008 is statistically significant (p<.05).

^g The standard error is between 5 and 10 percentage points.

^h The standard error is greater than 10 percentage points.

- Statistic could not be calculated due to fewer than 25 cases during the time period.

Table 23.8
Cancer of the Prostate (Invasive)

5-Year Relative and Period Survival (Percent) by Race, Diagnosis Year, Stage and Age

	All Races, Males			White Males			Black Males		
	All	<65	65+	All	<65	65+	All	<65	65+
5-Year Relative Survival (Percent)									
Year of Diagnosis:									
1960-1963 ^a	-	-	-	50	-	-	35	-	-
1970-1973 ^a	-	-	-	63	-	-	55	-	-
1975-1977 ^b	68.3	73.7	66.6	69.0	75.4	67.2	61.0	62.3	60.5
1978-1980 ^b	70.6	75.5	69.1	71.7	77.1	70.1	62.1	65.2	60.8
1981-1983 ^b	72.5	76.3	71.4	73.5	77.9	72.3	63.2	65.4	62.3
1984-1986 ^b	75.6	77.6	75.0	76.8	79.3	76.2	65.8	67.5	65.2
1987-1989 ^b	83.2	83.4	83.2	84.8	84.9	84.8	71.5	72.9	71.1
1990-1992 ^b	93.3	93.1	93.3	94.4	94.1	94.5	84.7	86.8	83.8
1993-1995 ^b	95.4	95.9	95.2	96.1	96.6	96.0	91.8	93.2	90.9
1996-1998 ^b	97.6	98.5	97.1	98.1	99.0	97.6	95.0	96.7	93.6
1999-2001 ^b	99.6	99.2	99.7	99.9	99.5	99.8	97.4	98.3	96.4
2002-2008 ^b	99.9 ^f	99.6 ^f	99.8 ^f	99.9 ^f	99.7 ^f	99.9 ^f	97.7 ^f	98.9 ^f	96.1 ^f
5-Year Period Survival (Percent) ^{cd}									
2008	99.3	99.1	99.4	99.6	99.2	99.6	96.6	98.1	94.8
Stage Distribution (%) 2002-2008 ^{ee}									
All Stages									
Number of cases	358,682	148,409	210,273	281,078	113,792	167,286	49,370	25,430	23,940
Percent	100%	100%	100%	100%	100%	100%	100%	100%	100%
Localized	81	79	83	81	79	83	81	80	82
Regional	12	16	8	12	17	8	10	14	7
Distant	4	3	5	4	2	5	6	4	7
Unstaged	3	1	4	3	1	4	3	1	4
5-Year Relative Survival (Percent), 2002-2008 ^c									
Age at Diagnosis:									
Ages <45	96.7	-	-	96.3	-	-	96.9	-	-
Ages 45-54	98.3	-	-	98.2	-	-	97.9	-	-
Ages 55-64	99.3	-	-	99.6	-	-	97.9	-	-
Ages 65-74	100.0	-	-	100.0	-	-	97.7	-	-
Ages 75+	96.7	-	-	97.4	-	-	86.1	-	-
Ages <65	99.0	-	-	99.2	-	-	97.9	-	-
Ages 65+	99.3	-	-	99.6	-	-	94.2	-	-
Stage ^{ee} :									
All Stages	99.2	99.0	99.3	99.6	99.2	99.6	96.2	97.9	94.2
Localized	100.0	100.0	100.0	100.0	100.0	100.0	100.0	100.0	100.0
Regional	100.0	100.0	100.0	100.0	100.0	100.0	100.0	100.0	98.7
Distant	27.8	30.8	26.7	27.6	30.8	26.5	26.7	29.4	24.9
Unstaged	71.1	83.4	68.2	68.8	82.0	66.1	60.4	76.1	54.3

^a Based on End Results data from a series of hospital registries and one population-based registry.

^b SEER 9 areas (San Francisco, Connecticut, Detroit, Hawaii, Iowa, New Mexico, Seattle, Utah, Atlanta).

Based on follow-up of patients into 2009.

^c SEER 18 areas (San Francisco, Connecticut, Detroit, Hawaii, Iowa, New Mexico, Seattle, Utah, Atlanta, San Jose-Monterey, Los Angeles, Alaska Native Registry, Rural Georgia, California excluding SF/SJM/LA, Kentucky, Louisiana, New Jersey and Georgia excluding ATL/RG).

Based on follow-up of patients into 2009.

^d Period survival provides a 2008 estimate of survival by piecing together the most recent conditional survival estimates from several cohorts. It is computed here using three year calendar blocks (2006-2008: 0-1 year survival), (2005-2007: 1-2 year survival), (2004-2006: 2-3 year survival), (2003-2005: 3-4 year survival), (2002-2004: 4-5 years survival).

^e Stage at diagnosis is classified using SEER Summary Stage 2000.

^f The difference between 1975-1977 and 2002-2008 is statistically significant (p<.05).

^g The standard error is between 5 and 10 percentage points.

^h The standard error is greater than 10 percentage points.

- Statistic could not be calculated due to fewer than 25 cases during the time period.

Table 24.8
Cancer of the Stomach (Invasive)

5-Year Relative and Period Survival (Percent) by Race, Sex, Diagnosis Year, Stage and Age

	All Races			Whites			Blacks		
	Total	Males	Females	Total	Males	Females	Total	Males	Females
5-Year Relative Survival (Percent)									
Year of Diagnosis:									
1960-1963 ^a	-	-	-	11	10	13	8	5	14
1970-1973 ^a	-	-	-	13	12	14	13	15	10
1975-1977 ^b	15.3	14.5	16.6	14.2	13.2	15.9	16.1	16.1	16.2
1978-1980 ^b	16.1	14.3	19.0	15.5	13.7	18.3	16.5	15.6	18.1
1981-1983 ^b	17.3	16.5	18.7	16.2	15.4	17.6	16.6	16.5	16.7
1984-1986 ^b	17.8	15.7	21.1	17.0	14.6	21.0	19.1	17.0	22.0
1987-1989 ^b	19.9	17.1	24.6	18.5	15.7	23.3	18.8	16.6	22.5
1990-1992 ^b	21.0	18.2	25.5	18.8	16.1	23.2	22.8	22.1	23.6
1993-1995 ^b	21.1	20.1	22.8	20.0	19.0	21.9	19.5	17.5	22.4
1996-1998 ^b	22.5	21.3	24.3	20.6	18.9	23.6	22.4	20.3	25.1
1999-2001 ^b	24.1	23.4	25.3	22.5	21.3	24.6	22.5	24.2	20.1
2002-2008 ^b	27.6 ^f	25.5 ^f	31.0 ^f	26.6 ^f	24.9 ^f	29.6 ^f	28.3 ^f	22.8 ^f	35.4 ^f
5-Year Period Survival (Percent) ^{cd}									
2008	28.2	26.0	31.5	26.5	24.4	29.9	28.0	24.1	32.8
Stage Distribution (%) 2002-2008 ^{ee}									
All Stages									
Number of cases	34,669	20,834	13,835	24,485	15,078	9,407	4,802	2,692	2,110
Percent	100%	100%	100%	100%	100%	100%	100%	100%	100%
Localized	24	23	27	24	22	27	25	22	28
Regional	31	33	28	30	32	27	30	32	29
Distant	34	35	32	35	36	33	33	36	30
Unstaged	11	9	13	11	9	13	11	10	14
5-Year Relative Survival (Percent), 2002-2008 ^c									
Age at Diagnosis:									
Ages <45	31.3	27.9	35.3	29.3	24.9	34.8	34.7	31.0	38.6
Ages 45-54	30.2	28.1	33.9	28.5	26.6	32.2	30.3	25.4	38.1
Ages 55-64	29.1	26.3	35.2	26.7	24.7	31.4	30.9	25.6	40.3
Ages 65-74	29.3	27.3	32.8	28.4	26.6	32.0	26.4	22.5	32.0
Ages 75+	21.6	19.3	23.9	20.7	18.3	23.4	18.8	14.4	21.4
Ages <65	29.9	27.2	34.8	27.7	25.4	32.5	31.4	26.4	39.3
Ages 65+	24.8	23.1	27.0	23.9	22.2	26.2	22.3	19.1	25.4
Stage ^g :									
All Stages	26.9	24.9	29.9	25.4	23.6	28.4	26.5	22.9	31.1
Localized	62.3	60.0	65.2	60.8	58.4	64.0	59.8	56.8	62.6
Regional	27.7	26.5	29.9	26.5	25.5	28.6	25.3	23.1	28.3
Distant	3.7	3.7	3.7	3.3	3.3	3.2	5.4	4.1	7.3
Unstaged	17.9	14.8	21.3	16.0	13.3	19.1	19.9	15.1	24.0

^a Based on End Results data from a series of hospital registries and one population-based registry.^b SEER 9 areas (San Francisco, Connecticut, Detroit, Hawaii, Iowa, New Mexico, Seattle, Utah, Atlanta).

Based on follow-up of patients into 2009.

^c SEER 18 areas (San Francisco, Connecticut, Detroit, Hawaii, Iowa, New Mexico, Seattle, Utah, Atlanta, San Jose-Monterey, Los Angeles, Alaska Native Registry, Rural Georgia, California excluding SF/SJM/LA, Kentucky, Louisiana, New Jersey and Georgia excluding ATL/RG).

Based on follow-up of patients into 2009.

^d Period survival provides a 2008 estimate of survival by piecing together the most recent conditional survival estimates from several cohorts. It is computed here using three year calendar blocks (2006-2008: 0-1 year survival), (2005-2007: 1-2 year survival), (2004-2006: 2-3 year survival), (2003-2005: 3-4 year survival), (2002-2004: 4-5 years survival).^e Stage at diagnosis is classified using SEER Summary Stage 2000.^f The difference between 1975-1977 and 2002-2008 is statistically significant (p<.05).^g The standard error is between 5 and 10 percentage points.^h The standard error is greater than 10 percentage points.

- Statistic could not be calculated due to fewer than 25 cases during the time period.

Table 25.8
Cancer of the Testis (Invasive)

5-Year Relative and Period Survival (Percent) by Race, Diagnosis Year, Stage and Age

	All Races, Males			White Males			Black Males		
	All	<50	50+	All	<50	50+	All	<50	50+
5-Year Relative Survival (Percent)									
Year of Diagnosis:									
1960-1963 ^a	-	-	-	63	-	-	-	-	-
1970-1973 ^a	-	-	-	72	-	-	-	-	-
1975-1977 ^b	82.7	83.3	77.7	82.6	83.3	77.4	-	-	-
1978-1980 ^b	88.9	89.5	82.4	89.2	89.8	83.4	73.2 ^g	78.0 ^g	-
1981-1983 ^b	92.2	92.7	86.3	92.4	92.9	86.4	87.7 ^g	84.7 ^g	-
1984-1986 ^b	92.6	93.6	80.5	93.0	94.0	80.7	87.0 ^g	89.4 ^g	-
1987-1989 ^b	95.2	95.0	95.7	95.5	95.4	95.3	88.4 ^g	87.8 ^g	-
1990-1992 ^b	95.8	95.8	93.8	96.2	96.1	94.7	83.5 ^g	-	-
1993-1995 ^b	95.8	96.3	86.6	96.1	96.6	87.8	88.0	89.4	-
1996-1998 ^b	95.7	96.3	86.6	95.8	96.5	86.6	88.7	90.1	-
1999-2001 ^b	96.1	96.4	91.8	96.4	96.6	92.7	87.1	88.7	-
2002-2008 ^b	96.4 ^f	96.9 ^f	92.3 ^f	97.0 ^f	97.3 ^f	94.0 ^f	88.6	88.2	-
5-Year Period Survival (Percent) ^{cd}									
2008	95.4	95.7	93.0	95.7	96.0	93.5	88.9	87.9	-
Stage Distribution (%) 2002-2008 ^{ce}									
All Stages									
Number of cases	14,896	13,383	1,513	13,656	12,272	1,384	421	374	47
Percent	100%	100%	100%	100%	100%	100%	100%	100%	100%
Localized	69	69	70	70	69	71	60	60	55
Regional	18	18	16	18	18	16	22	21	23
Distant	12	12	10	12	12	10	17	17	15
Unstaged	1	1	3	1	1	3	2	1	6
5-Year Relative Survival (Percent), 2002-2008 ^c									
Age at Diagnosis:									
Ages <45	95.4	-	-	95.7	-	-	88.6	-	-
Ages 45-54	95.3	-	-	95.5	-	-	90.4	-	-
Ages 55-64	90.4	-	-	90.4	-	-	-	-	-
Ages 65-74	93.6	-	-	93.2	-	-	-	-	-
Ages 75+	65.5 ^h	-	-	73.3 ^h	-	-	-	-	-
Ages <65	95.3	-	-	95.5	-	-	89.3	-	-
Ages 65+	86.1	-	-	88.2	-	-	-	-	-
Stage ^e :									
All Stages	95.2	95.4	92.5	95.5	95.7	92.9	89.1	89.0	87.5 ^g
Localized	99.0	99.1	97.9	99.0	99.2	97.7	99.4	98.7	100.0
Regional	95.8	95.8	95.9	96.5	96.3	97.5	84.7	86.0	-
Distant	72.5	73.7	59.6	73.2	74.4	59.9	56.9 ^g	56.3 ^g	-
Unstaged	83.1	90.0	57.8 ^g	85.2	91.7	61.8 ^g	-	-	-

^a Based on End Results data from a series of hospital registries and one population-based registry.^b SEER 9 areas (San Francisco, Connecticut, Detroit, Hawaii, Iowa, New Mexico, Seattle, Utah, Atlanta).

Based on follow-up of patients into 2009.

^c SEER 18 areas (San Francisco, Connecticut, Detroit, Hawaii, Iowa, New Mexico, Seattle, Utah, Atlanta, San Jose-Monterey, Los Angeles, Alaska Native Registry, Rural Georgia, California excluding SF/SJM/LA, Kentucky, Louisiana, New Jersey and Georgia excluding ATL/RG).

Based on follow-up of patients into 2009.

^d Period survival provides a 2008 estimate of survival by piecing together the most recent conditional survival estimates from several cohorts. It is computed here using three year calendar blocks (2006-2008: 0-1 year survival), (2005-2007: 1-2 year survival), (2004-2006: 2-3 year survival), (2003-2005: 3-4 year survival), (2002-2004: 4-5 years survival).^e Stage at diagnosis is classified using SEER Summary Stage 2000.^f The difference between 1975-1977 and 2002-2008 is statistically significant (p<.05).^g The standard error is between 5 and 10 percentage points.^h The standard error is greater than 10 percentage points.

- Statistic could not be calculated due to fewer than 25 cases during the time period.

Table 26.8
Cancer of the Thyroid (Invasive)

5-Year Relative and Period Survival (Percent) by Race, Sex, Diagnosis Year, Stage and Age

	All Races			Whites			Blacks		
	Total	Males	Females	Total	Males	Females	Total	Males	Females
5-Year Relative Survival (Percent)									
Year of Diagnosis:									
1960-1963 ^a	-	-	-	83	75	87	-	-	-
1970-1973 ^a	-	-	-	86	82	87	-	-	-
1975-1977 ^b	92.2	91.1	92.5	91.9	90.7	92.3	90.3	-	91.5
1978-1980 ^b	92.1	87.3	93.6	91.5	87.6	92.7	90.2	68.0 ^h	95.5
1981-1983 ^b	93.7	92.2	94.0	93.1	90.9	93.8	96.4	100.0	93.2
1984-1986 ^b	93.2	89.9	94.2	93.2	89.5	94.3	89.4	85.5 ^g	90.4
1987-1989 ^b	94.5	91.6	95.3	94.2	91.7	95.0	92.2	91.2 ^g	92.2
1990-1992 ^b	94.3	90.5	95.6	95.0	91.6	96.0	85.9	84.7 ^g	86.3
1993-1995 ^b	95.4	91.7	96.6	95.5	91.6	96.9	93.3	88.1 ^g	94.4
1996-1998 ^b	95.6	91.0	97.0	96.0	91.4	97.4	95.1	86.3 ^g	96.4
1999-2001 ^b	96.5	94.4	97.1	96.8	95.1	97.4	92.1	88.6 ^g	92.4
2002-2008 ^b	97.6 ^f	94.9 ^f	98.4 ^f	97.8 ^f	95.2 ^f	98.6 ^f	95.9 ^f	91.6	96.8
5-Year Period Survival (Percent) ^{cd}									
2008	97.6	95.0	98.3	97.9	95.4	98.6	95.0	88.8	96.3
Stage Distribution (%) 2002-2008 ^{ce}									
All Stages									
Number of cases	51,692	11,831	39,861	42,543	10,081	32,462	3,306	602	2,704
Percent	100%	100%	100%	100%	100%	100%	100%	100%	100%
Localized	68	59	71	69	59	72	76	67	78
Regional	25	31	23	25	31	23	15	19	14
Distant	5	8	4	4	8	3	7	11	5
Unstaged	2	2	2	2	2	2	2	2	2
5-Year Relative Survival (Percent), 2002-2008 ^c									
Age at Diagnosis:									
Ages <45	99.6	98.4	99.8	99.6	98.5	99.8	98.3	93.7	98.9
Ages 45-54	98.9	97.2	99.4	99.1	97.4	99.5	97.6	92.2	98.3
Ages 55-64	96.5	93.6	97.7	96.8	93.9	98.0	94.0	90.8	94.7
Ages 65-74	93.3	88.1	95.4	93.9	88.8	95.8	88.6	82.8 ^g	90.2
Ages 75+	83.2	77.3	84.2	84.2	77.0	85.1	73.7 ^g	63.7 ^h	73.5
Ages <65	98.8	96.8	99.3	98.9	97.0	99.5	97.2	92.9	98.0
Ages 65+	89.8	84.8	91.3	90.5	85.3	91.9	84.1	77.2 ^g	86.1
Stage ^e :									
All Stages	97.5	94.5	98.3	97.7	94.7	98.5	95.3	90.1	96.4
Localized	99.9	99.7	99.9	99.9	99.7	99.9	99.3	96.8	99.4
Regional	97.1	95.3	97.8	97.2	95.1	97.9	94.7	91.4	95.4
Distant	53.9	45.6	58.9	53.1	43.6	59.7	46.0	45.8 ^g	46.0 ^g
Unstaged	87.4	78.5	90.2	86.3	77.5	89.2	81.5 ^g	-	82.6 ^g

^a Based on End Results data from a series of hospital registries and one population-based registry.^b SEER 9 areas (San Francisco, Connecticut, Detroit, Hawaii, Iowa, New Mexico, Seattle, Utah, Atlanta).

Based on follow-up of patients into 2009.

^c SEER 18 areas (San Francisco, Connecticut, Detroit, Hawaii, Iowa, New Mexico, Seattle, Utah, Atlanta, San Jose-Monterey, Los Angeles, Alaska Native Registry, Rural Georgia, California excluding SF/SJM/LA, Kentucky, Louisiana, New Jersey and Georgia excluding ATL/RG).

Based on follow-up of patients into 2009.

^d Period survival provides a 2008 estimate of survival by piecing together the most recent conditional survival estimates from several cohorts. It is computed here using three year calendar blocks (2006-2008: 0-1 year survival), (2005-2007: 1-2 year survival), (2004-2006: 2-3 year survival), (2003-2005: 3-4 year survival), (2002-2004: 4-5 years survival).^e Stage at diagnosis is classified using SEER Summary Stage 2000.^f The difference between 1975-1977 and 2002-2008 is statistically significant (p<.05).^g The standard error is between 5 and 10 percentage points.^h The standard error is greater than 10 percentage points.

- Statistic could not be calculated due to fewer than 25 cases during the time period.

Table 27.8
Cancer of the Urinary Bladder (Invasive and *In Situ*)

5-Year Relative and Period Survival (Percent) by Race, Sex, Diagnosis Year, Stage and Age

	All Races			Whites			Blacks		
	Total	Males	Females	Total	Males	Females	Total	Males	Females
5-Year Relative Survival (Percent)									
Year of Diagnosis:									
1960-1963 ^a	-	-	-	53	53	53	24	24	24
1970-1973 ^a	-	-	-	61	61	60	36	38	27
1975-1977 ^b	72.5	74.0	68.4	73.5	74.6	70.3	50.3	56.5	38.1 ^g
1978-1980 ^b	74.1	75.3	70.4	74.9	75.7	72.4	54.6	62.7	40.4
1981-1983 ^b	77.0	78.4	73.1	77.7	78.9	74.3	59.7	64.9	47.6 ^g
1984-1986 ^b	76.9	78.3	72.9	77.5	78.7	73.9	59.7	62.8	52.9
1987-1989 ^b	79.2	81.6	72.2	80.0	82.2	73.5	62.5	67.6	52.6
1990-1992 ^b	79.6	82.1	72.3	80.6	83.0	73.4	63.4	66.1	58.8
1993-1995 ^b	80.6	82.4	75.4	81.4	82.8	77.3	60.0	67.0	45.8
1996-1998 ^b	79.4	80.7	75.8	80.1	81.4	76.3	62.1	64.8	55.4
1999-2001 ^b	80.3	81.2	77.6	81.4	81.9	79.8	67.3	71.6	60.1
2002-2008 ^b	79.8 ^f	81.6 ^f	74.4 ^f	80.7 ^f	82.2 ^f	75.8 ^f	62.1 ^f	66.8 ^f	53.5 ^f
5-Year Period Survival (Percent) ^{cd}									
2008	77.8	79.7	72.0	78.3	79.9	73.2	63.0	68.9	51.9
Stage Distribution (%) 2002-2008 ^{ee}									
All Stages									
Number of cases	85,609	64,188	21,421	76,507	57,804	18,703	4,454	2,879	1,575
Percent	100%	100%	100%	100%	100%	100%	100%	100%	100%
In Situ	51	52	49	52	52	50	37	41	31
Localized	35	35	35	35	35	34	39	38	41
Regional	7	7	8	7	7	8	11	10	14
Distant	4	3	5	4	3	5	7	6	10
Unstaged	3	3	3	3	2	3	4	4	5
5-Year Relative Survival (Percent), 2002-2008 ^c									
Age at Diagnosis:									
Ages <45	88.2	88.9	86.1	88.8	89.3	87.3	74.5	75.5	70.5 ^g
Ages 45-54	84.4	84.5	83.9	84.9	84.5	86.2	71.0	75.8	56.7
Ages 55-64	83.4	83.8	81.6	83.8	84.1	82.8	69.4	72.6	61.2
Ages 65-74	79.1	80.2	75.3	79.5	80.2	76.6	67.1	72.2	57.7
Ages 75+	70.9	74.4	62.4	71.6	74.9	63.1	53.1	58.0	47.6
Ages <65	84.1	84.5	82.8	84.5	84.6	84.3	70.7	74.1	60.9
Ages 65+	74.4	77.0	67.3	74.9	77.2	68.2	59.9	65.7	51.6
Stage ^e :									
All Stages	77.7	79.6	72.0	78.2	79.8	73.1	64.2	69.7	54.3
In Situ	96.4	96.6	95.8	96.5	96.6	96.2	91.3	93.0	86.7
Localized	70.2	72.6	62.8	70.4	72.6	63.2	62.3	67.4	53.8
Regional	32.9	35.1	27.1	32.6	34.7	26.9	28.9	31.9	24.4
Distant	5.5	6.5	3.8	5.6	6.3	3.8	6.0	7.8	4.3
Unstaged	48.8	53.1	39.4	46.0	50.6	35.6	41.0	44.8 ^g	35.2 ^g

^a Based on End Results data from a series of hospital registries and one population-based registry.

^b SEER 9 areas (San Francisco, Connecticut, Detroit, Hawaii, Iowa, New Mexico, Seattle, Utah, Atlanta).

Based on follow-up of patients into 2009.

^c SEER 18 areas (San Francisco, Connecticut, Detroit, Hawaii, Iowa, New Mexico, Seattle, Utah, Atlanta, San Jose-Monterey, Los Angeles, Alaska Native Registry, Rural Georgia, California excluding SF/SJM/LA, Kentucky, Louisiana, New Jersey and Georgia excluding ATL/RG).

Based on follow-up of patients into 2009.

^d Period survival provides a 2008 estimate of survival by piecing together the most recent conditional survival estimates from several cohorts. It is computed here using three year calendar blocks (2006-2008: 0-1 year survival), (2005-2007: 1-2 year survival), (2004-2006: 2-3 year survival), (2003-2005: 3-4 year survival), (2002-2004: 4-5 years survival).

^e Stage at diagnosis is classified using SEER Summary Stage 2000.

^f The difference between 1975-1977 and 2002-2008 is statistically significant ($p < .05$).

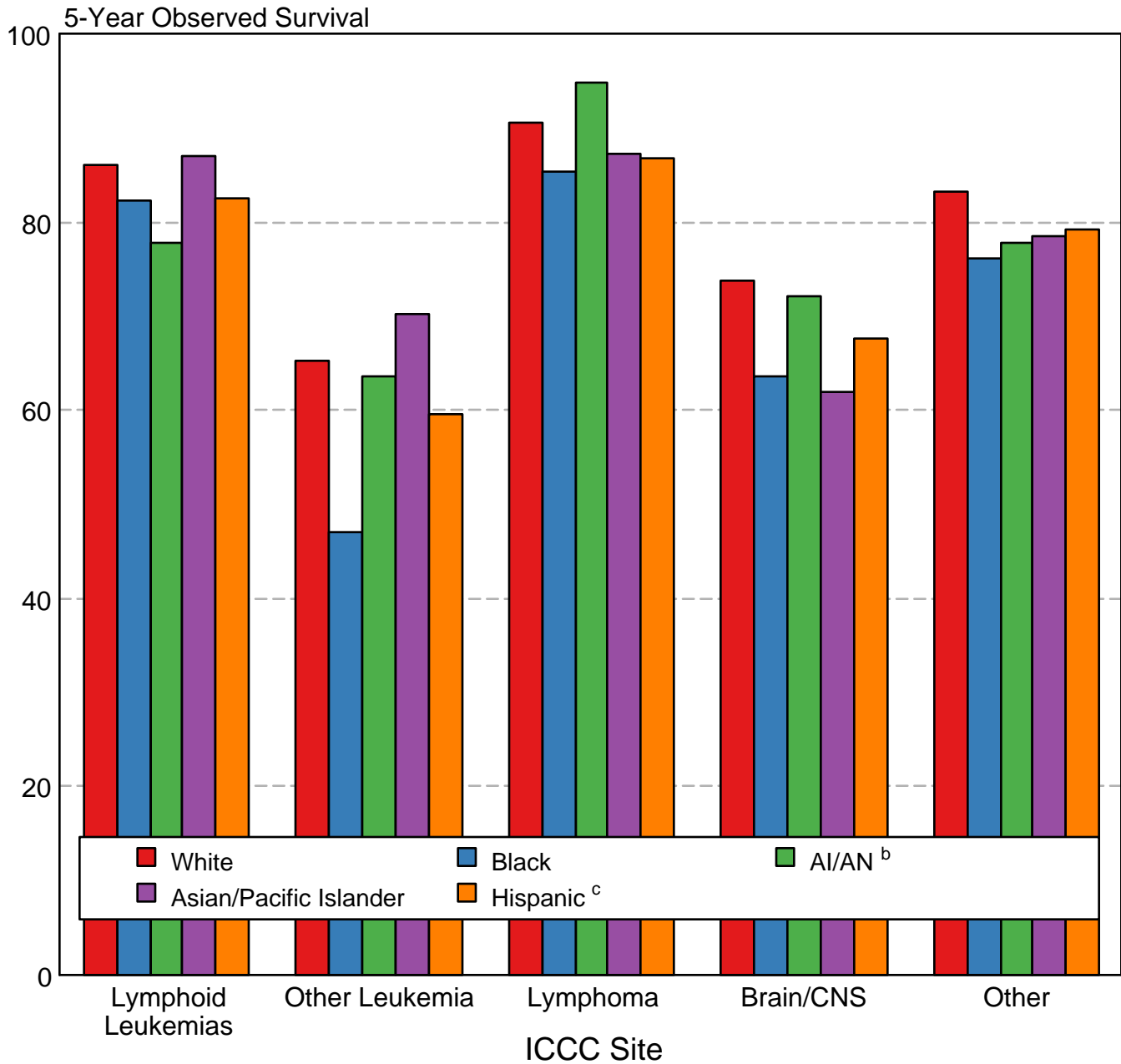
^g The standard error is between 5 and 10 percentage points.

^h The standard error is greater than 10 percentage points.

- Statistic could not be calculated due to fewer than 25 cases during the time period.

Figure 29.3

Childhood Cancer 5-Year Observed Survival (%) by ICCC Group^a and Race/Ethnicity Both Sexes, Under 20 Years of Age, 2002-2008



Source: SEER 18 areas (San Francisco, Connecticut, Detroit, Hawaii, Iowa, New Mexico, Seattle, Utah, Atlanta, San Jose-Monterey, Los Angeles, Alaska Native Registry, Rural Georgia, California excluding SF/SJM/LA, Kentucky, Louisiana, New Jersey and Georgia excluding ATL/RG).

International Classification of Childhood Cancer is based on ICD-O-3. Steliarova-Foucher E, Stiller C, Lacour B, Kaatsch P. International Classification of Childhood Cancer, Third Edition. Cancer. April 1, 2005; Vol 103, No. 7, pg 1457-1467.

^a Excludes myelodysplastic syndromes (MDS) and benign brain tumors.

^b American Indian/Alaska Native. Survival data for American Indian/Alaska Native are based on the CHSDA (Contract Health Service Delivery Area) counties.

^c Hispanic is not mutually exclusive from whites, blacks, Asian/Pacific Islanders, and American Indians/Alaska Natives. Survival data for Hispanics are based on NHIA and excludes cases from the Alaska Native Registry.