

Table 10.1
Kaposi Sarcoma

Number of Cases

By SEER Location and Year of Diagnosis, 1975-2009

All Races, Males, All Ages

Year of Diagnosis

SEER Location	1975- 1979	1980- 1981	1982- 1983	1984- 1985	1986- 1987	1988- 1989	1990- 1991	1992- 1993	1994- 1995	1996- 1997	1998- 1999	2000- 2001	2002- 2003	2004- 2005	2006- 2007	2008- 2009
SEER 9 ^b	134	79	326	888	1,574	2,131	2,230	2,057	1,800	840	391	401	332	369	332	338
SEER 9 except SF-Oakland	102	44	85	260	428	776	840	976	874	463	244	266	221	244	235	249
San Francisco- Oakland SMSA ^c	32	35	241	628	1,146	1,355	1,390	1,081	926	377	147	135	111	125	97	89
San Francisco City/County	15	21	201	540	955	1,076	1,089	792	689	254	86	80	70	82	62	58

Age-Adjusted Cancer Incidence Rates^a

By SEER Location and Year of Diagnosis, 1975-2009

All Races, Males, All Ages

Year of Diagnosis

SEER Location	1975- 1979	1980- 1981	1982- 1983	1984- 1985	1986- 1987	1988- 1989	1990- 1991	1992- 1993	1994- 1995	1996- 1997	1998- 1999	2000- 2001	2002- 2003	2004- 2005	2006- 2007	2008- 2009
SEER 9 ^b	0.4	0.5	1.7	4.2	7.1	9.2	9.3	8.2	7.0	3.2	1.5	1.5	1.3	1.4	1.2	1.2
SEER 9 except SF-Oakland	0.4	0.4	0.6	1.5	2.3	4.0	4.2	4.6	4.0	2.1	1.1	1.2	1.0	1.1	1.0	1.1
San Francisco- Oakland SMSA ^c	0.7	1.3	7.0	17.2	30.1	34.0	34.0	25.6	22.0	9.0	3.5	3.1	2.6	2.9	2.2	2.0
San Francisco City/County	1.1	3.1	25.1	65.4	111.4	124.9	125.9	89.1	77.4	28.3	9.4	8.6	7.7	9.0	6.6	6.1

^a Rates are per 100,000 males and are age-adjusted to the 2000 US Std Population (19 age groups - Census P25-1130).

^b The SEER 9 areas are San Francisco-Oakland SMSA, Connecticut, Detroit, Hawaii, Iowa, New Mexico, Seattle, Utah and Atlanta.

^c The San Francisco-Oakland SMSA represents 15% of all persons in the SEER areas. For this age group, all SEER areas may not be generalizable to the United States for Kaposi Sarcoma.

- Statistic not shown. Rate based on less than 4 cases for the time interval.

Table 10.2
Kaposi Sarcoma

Number of Cases

By SEER Location and Year of Diagnosis, 1975-2009

All Races, Males, Ages 20-54

Year of Diagnosis

SEER Location	1975- 1979	1980- 1981	1982- 1983	1984- 1985	1986- 1987	1988- 1989	1990- 1991	1992- 1993	1994- 1995	1996- 1997	1998- 1999	2000- 2001	2002- 2003	2004- 2005	2006- 2007	2008- 2009
SEER 9 ^b	13	26	254	806	1,480	1,994	2,101	1,922	1,674	755	318	347	258	308	268	251
SEER 9 except SF-Oakland	11	5	35	207	379	695	771	910	809	410	197	227	182	201	195	186
San Francisco- Oakland SMSA ^c	<4	21	219	599	1,101	1,299	1,330	1,012	865	345	121	120	76	107	73	65
San Francisco City/County	<4	18	193	520	924	1,040	1,051	748	647	237	76	74	52	73	53	47

Age-Adjusted Cancer Incidence Rates^a

By SEER Location and Year of Diagnosis, 1975-2009

All Races, Males, Ages 20-54

Year of Diagnosis

SEER Location	1975- 1979	1980- 1981	1982- 1983	1984- 1985	1986- 1987	1988- 1989	1990- 1991	1992- 1993	1994- 1995	1996- 1997	1998- 1999	2000- 2001	2002- 2003	2004- 2005	2006- 2007	2008- 2009
SEER 9 ^b	0.1	0.3	2.4	7.4	13.1	16.9	17.1	14.9	12.6	5.6	2.3	2.5	1.9	2.2	1.9	1.8
SEER 9 except SF-Oakland	0.1	0.1	0.4	2.2	3.9	6.9	7.4	8.4	7.2	3.6	1.7	2.0	1.6	1.7	1.7	1.6
San Francisco- Oakland SMSA ^c	-	1.3	12.1	32.4	57.3	64.5	64.0	46.9	40.1	15.9	5.4	5.2	3.3	4.8	3.3	2.8
San Francisco City/County	-	5.3	47.8	125.4	214.3	239.5	240.8	165.5	142.3	51.8	16.1	15.7	10.7	15.8	11.2	9.8

^a Rates are per 100,000 males aged 20-54 and are age-adjusted to the 2000 US Std Population (19 age groups - Census P25-1130).

^b The SEER 9 areas are San Francisco-Oakland SMSA, Connecticut, Detroit, Hawaii, Iowa, New Mexico, Seattle, Utah and Atlanta.

^c The San Francisco-Oakland SMSA represents 15% of all persons in the SEER areas. For this age group, all SEER areas may not be generalizable to the United States for Kaposi Sarcoma.

- Statistic not shown. Rate based on less than 4 cases for the time interval.

Table 10.3

Kaposi Sarcoma

Number of Cases

By SEER Location and Year of Diagnosis, 1975-2009

All Races, Males, Ages 55+

Year of Diagnosis

SEER Location	1975- 1979	1980- 1981	1982- 1983	1984- 1985	1986- 1987	1988- 1989	1990- 1991	1992- 1993	1994- 1995	1996- 1997	1998- 1999	2000- 2001	2002- 2003	2004- 2005	2006- 2007	2008- 2009
SEER 9 ^b	121	53	71	81	93	135	129	134	126	85	73	53	74	60	64	85
SEER 9 except SF-Oakland	91	39	49	53	49	81	69	65	65	53	47	38	39	42	40	61
San Francisco- Oakland SMSA ^c	30	14	22	28	44	54	60	69	61	32	26	15	35	18	24	24
San Francisco City/County	14	<4	8	20	31	35	38	44	42	17	10	6	18	9	9	11

Age-Adjusted Cancer Incidence Rates^a

By SEER Location and Year of Diagnosis, 1975-2009

All Races, Males, Ages 55+

Year of Diagnosis

SEER Location	1975- 1979	1980- 1981	1982- 1983	1984- 1985	1986- 1987	1988- 1989	1990- 1991	1992- 1993	1994- 1995	1996- 1997	1998- 1999	2000- 2001	2002- 2003	2004- 2005	2006- 2007	2008- 2009
SEER 9 ^b	1.9	1.9	2.4	2.4	2.5	3.6	3.6	3.3	3.0	2.1	1.7	1.3	1.5	1.2	1.2	1.5
SEER 9 except SF-Oakland	1.7	1.7	2.0	2.0	1.8	2.7	2.4	2.0	1.9	1.6	1.3	1.1	1.0	1.0	0.9	1.3
San Francisco- Oakland SMSA ^c	2.9	3.1	4.6	4.7	6.6	8.1	9.6	10.4	9.0	4.8	3.7	2.1	4.5	2.2	2.8	2.7
San Francisco City/County	4.7	-	5.6	12.9	20.5	23.5	26.4	30.4	29.8	11.5	6.7	3.8	10.7	5.0	4.7	5.7

^a Rates are per 100,000 males aged 55+ and are age-adjusted to the 2000 US Std Population (19 age groups - Census P25-1130).

^b The SEER 9 areas are San Francisco-Oakland SMSA, Connecticut, Detroit, Hawaii, Iowa, New Mexico, Seattle, Utah and Atlanta.

^c The San Francisco-Oakland SMSA represents 15% of all persons in the SEER areas. For this age group, all SEER areas may not be generalizable to the United States for Kaposi Sarcoma.

- Statistic not shown. Rate based on less than 4 cases for the time interval.

Table 10.4
Kaposi Sarcoma

Age-adjusted SEER Incidence^a Rates by Year, Race and Sex

Year of Diagnosis:	All Races			Whites			Blacks		
	Total	Males	Females	Total	Males	Females	Total	Males	Females
1975-2009	1.77	3.47	0.13	1.83	3.58	0.11	2.18	4.44	0.24
1975	0.23	0.56	-	0.22	0.56	-	-	-	-
1976	0.25	0.47	-	0.24	0.48	-	-	-	-
1977	0.29	0.54	-	0.30	0.55	-	-	-	-
1978	0.24	0.35	0.17	0.23	0.34	-	-	-	-
1979	0.18	0.30	-	0.18	0.30	-	-	-	-
1980	0.28	0.56	-	0.30	0.60	-	-	-	-
1981	0.31	0.54	-	0.34	0.61	-	-	-	-
1982	0.65	1.20	0.18	0.71	1.32	0.18	-	-	-
1983	1.07	2.19	-	1.19	2.40	-	-	-	-
1984	1.81	3.59	-	1.99	3.91	-	1.27	2.89	-
1985	2.47	4.86	0.16	2.80	5.48	0.18	1.09	2.24	-
1986	3.27	6.54	-	3.71	7.34	-	1.65	3.59	-
1987	3.81	7.61	-	4.26	8.45	-	2.09	4.29	-
1988	4.43	8.87	0.15	4.82	9.56	0.15	3.40	7.28	-
1989	4.76	9.53	0.14	5.13	10.18	-	4.57	9.69	-
1990	4.61	9.21	0.18	5.03	9.99	0.15	3.65	7.54	-
1991	4.70	9.40	0.19	5.04	10.00	0.18	4.59	9.53	-
1992	4.38	8.69	0.18	4.60	9.02	0.18	5.02	10.59	-
1993	3.86	7.64	0.17	4.05	7.96	0.15	4.28	8.60	-
1994	3.78	7.46	0.17	3.88	7.58	0.13	4.15	8.42	-
1995	3.29	6.45	0.20	3.28	6.37	0.17	4.90	10.19	-
1996	2.24	4.40	0.16	2.02	4.00	-	4.61	9.09	-
1997	1.08	2.09	0.14	0.92	1.78	-	2.67	5.31	-
1998	0.81	1.57	-	0.69	1.33	-	1.79	3.78	-
1999	0.78	1.47	0.14	0.66	1.24	-	1.94	3.72	-
2000	0.80	1.55	-	0.67	1.30	-	1.98	4.00	-
2001	0.83	1.50	0.17	0.67	1.20	0.15	1.94	3.86	-
2002	0.68	1.26	0.12	0.56	1.04	-	1.50	3.02	-
2003	0.66	1.26	-	0.59	1.10	-	1.47	3.10	-
2004	0.69	1.34	-	0.59	1.14	-	1.66	3.34	-
2005	0.76	1.44	0.12	0.59	1.13	-	1.95	3.83	-
2006	0.59	1.15	-	0.49	0.93	-	1.38	2.80	-
2007	0.68	1.30	-	0.56	1.05	-	1.61	3.36	-
2008	0.67	1.31	-	0.55	1.08	-	1.61	3.11	-
2009	0.61	1.15	-	0.51	0.96	-	1.34	2.68	-

^a SEER 9 areas (San Francisco, Connecticut, Detroit, Hawaii, Iowa, New Mexico, Seattle, Utah, and Atlanta). Rates are per 100,000 and are age-adjusted to the 2000 US Std Population (19 age groups - Census P25-1130).
- Statistic not shown. Rate based on less than 16 cases for the time interval.

Table 10.5
Kaposi Sarcoma

SEER Incidence^a Rates, Age-Adjusted and Age-Specific Rates, by Race and Sex

	All Races			Whites			Blacks		
	Total	Males	Females	Total	Males	Females	Total	Males	Females
<u>SEER Incidence</u>									
<u>Age at Diagnosis</u>									
Age-Adjusted Rates, 2005-2009									
All ages	0.6	1.1	0.1	0.5	1.0	0.1	1.1	2.1	0.2
Under 65	0.5	1.0	0.0	0.4	0.8	0.0	1.2	2.2	0.2
65 and over	1.0	1.7	0.5	1.0	1.8	0.5	0.8	1.2	-
All ages (IARC world std) ^b	0.4	0.8	0.1	0.4	0.7	0.0	0.9	1.7	0.2
Age-Specific Rates, 2005-2009									
<1	-	-	-	-	-	-	-	-	-
1-4	-	-	-	-	-	-	-	-	-
5-9	-	-	-	-	-	-	-	-	-
10-14	-	-	-	-	-	-	-	-	-
15-19	-	-	-	-	-	-	-	-	-
20-24	0.2	0.3	-	0.1	0.2	-	0.6	1.1	-
25-29	0.5	1.0	-	0.4	0.7	-	1.8	3.3	-
30-34	0.8	1.5	-	0.7	1.2	-	2.2	4.1	-
35-39	1.1	2.2	-	1.0	1.8	-	2.6	5.2	-
40-44	1.3	2.6	-	1.1	2.2	-	3.2	6.2	-
45-49	1.0	1.9	-	0.9	1.7	-	1.7	3.1	-
50-54	0.6	1.1	-	0.5	1.0	-	1.0	1.9	-
55-59	0.5	0.9	-	0.5	0.9	-	0.7	-	-
60-64	0.4	0.8	-	0.4	0.7	-	-	-	-
65-69	0.6	1.1	-	0.6	1.0	-	-	-	-
70-74	0.7	1.0	0.3	0.7	1.1	0.3	-	-	-
75-79	1.0	1.9	0.4	0.9	1.7	-	-	-	-
80-84	1.3	2.1	0.9	1.3	2.1	0.8	-	-	-
85+	2.0	4.1	1.1	2.1	4.3	1.1	-	-	-

^a SEER 18 areas. Rates are per 100,000 and are age-adjusted to the 2000 US Std Population (19 age groups - Census P25-1130), unless noted.

^b Rates are per 100,000 and are age-adjusted to the IARC world standard population.

- Statistic not shown. Rate based on less than 16 cases for the time interval.

Table 10.6
Kaposi Sarcoma

5-Year Relative and Period Survival (Percent) by Race, Sex, Diagnosis Year, Stage and Age

	All Races			Whites			Blacks		
	Total	Males	Females	Total	Males	Females	Total	Males	Females
5-Year Relative Survival (Percent)									
Year of Diagnosis:									
1960-1963 ^a	-	-	-	-	-	-	-	-	-
1970-1973 ^a	-	-	-	-	-	-	-	-	-
1975-1977 ^b	82.2 ^f	82.0 ^f	-	81.6 ^f	80.2 ^f	-	-	-	-
1978-1980 ^b	78.1 ^f	79.1 ^f	73.1 ^g	77.4 ^f	77.5 ^f	72.9 ^g	-	-	-
1981-1983 ^b	35.9	33.2	70.8 ^g	34.4	31.6	68.7 ^g	-	-	-
1984-1986 ^b	12.8	11.5	70.9 ^g	12.6	11.2	70.7 ^g	16.8	15.7	-
1987-1989 ^b	9.8	9.2	69.0 ^g	9.4	8.8	72.3 ^g	12.0	10.8	-
1990-1992 ^b	9.4	8.7	52.6 ^f	9.0	8.3	52.3 ^f	11.5	10.5	-
1993-1995 ^b	21.7	21.0	52.3 ^f	22.3	21.5	60.0 ^g	16.3	15.4	-
1996-1998 ^b	52.4	51.5	72.1 ^g	57.0	55.6	86.5 ^f	38.9	38.3	-
1999-2001 ^b	58.0	57.3	64.0 ^f	64.4	62.6	83.3 ^f	43.5	45.0	-
2002-2008 ^b	67.5 ^e	67.2 ^e	69.0 ^f	77.0 ^e	76.4	76.5 ^f	47.5	47.9	-
5-Year Period Survival (Percent) ^{cd}									
2008	70.8	69.9	77.7	76.6	75.6	85.7	52.1	51.5	-
5-Year Relative Survival (Percent), 2002-2008 ^c									
Age at Diagnosis:									
Ages <45	62.0	62.3	49.2 ^f	68.2	68.1	-	47.2	47.9	32.4 ^g
Ages 45-54	66.4	67.0	-	70.9	71.1	-	48.9 ^f	49.9 ^f	-
Ages 55-64	78.9	79.1	-	83.6	82.9	-	44.5 ^g	42.2 ^g	-
Ages 65-74	80.1	80.8 ^f	75.9 ^g	78.7 ^f	80.2 ^f	71.6 ^g	-	-	-
Ages 75+	88.7	94.5	78.5	89.7	94.4 ^f	81.3 ^f	-	-	-
Ages <65	64.5	64.8	53.9 ^f	70.4	70.4	72.2 ^f	47.4	48.0	37.4 ^f
Ages 65+	87.7	89.7	80.7 ^f	87.9	89.6	82.1 ^f	81.1 ^g	-	-

^a Based on End Results data from a series of hospital registries and one population-based registry.
^b SEER 9 areas (San Francisco, Connecticut, Detroit, Hawaii, Iowa, New Mexico, Seattle, Utah, Atlanta).
Based on follow-up of patients into 2009.
^c SEER 18 areas (San Francisco, Connecticut, Detroit, Hawaii, Iowa, New Mexico, Seattle, Utah, Atlanta, San Jose-Monterey, Los Angeles, Alaska Native Registry, Rural Georgia, California excluding SF/SJM/LA, Kentucky, Louisiana, New Jersey and Georgia excluding ATL/RG).
Based on follow-up of patients into 2009.
^d Period survival provides a 2008 estimate of survival by piecing together the most recent conditional survival estimates from several cohorts. It is computed here using three year calendar blocks (2006-2008: 0-1 year survival), (2005-2007: 1-2 year survival), (2004-2006: 2-3 year survival), (2003-2005: 3-4 year survival), (2002-2004: 4-5 years survival).
^e The difference between 1975-1977 and 2002-2008 is statistically significant (p<.05).
^f The standard error is between 5 and 10 percentage points.
^g The standard error is greater than 10 percentage points.
- Statistic could not be calculated due to fewer than 25 cases during the time period.

Table 10.7
Kaposi Sarcoma

SEER^a Relative Survival (Percent)
By Year of Diagnosis

All Races, Males and Females

Survival Time	Year of Diagnosis																					
	1975- 1979	1980- 1984	1985- 1989	1990	1991	1992	1993	1994	1995	1996	1997	1998	1999	2000	2001	2002	2003	2004	2005	2006	2007	2008
1-year	95.6	66.9	60.3	61.9	62.8	63.2	59.2	55.9	62.3	69.7	74.3	74.0	76.6	74.3	80.3	78.0	75.0	82.5	81.7	81.0	82.5	79.4
2-year	90.1	44.9	34.0	33.5	30.5	28.6	30.4	27.8	47.0	60.5	65.4	65.2	65.0	67.8	73.0	71.6	72.2	73.9	78.3	77.5	80.0	
3-year	89.0	36.0	20.2	20.1	15.6	16.5	19.7	21.1	42.8	54.6	62.3	60.7	61.3	61.3	67.5	67.1	66.6	70.7	74.3	74.9		
4-year	84.2	31.7	13.9	14.7	11.1	11.1	15.6	18.5	38.7	51.6	59.0	58.5	56.5	57.2	64.6	66.0	64.6	69.2	73.5			
5-year	84.2	28.0	10.4	10.1	8.8	9.2	14.1	17.4	35.6	48.3	56.9	58.1	55.7	54.2	63.4	59.4	64.5	68.0				
6-year	78.8	24.4	8.8	8.0	7.8	8.6	13.8	16.2	35.0	45.7	54.7	55.2	53.1	52.7	62.9	57.6	64.2					
7-year	76.9	23.3	7.6	7.6	7.6	7.9	13.2	15.1	33.4	44.8	50.5	52.7	52.6	52.7	62.1	57.6						
8-year	76.9	20.5	6.7	7.0	7.3	7.7	12.7	14.7	32.1	44.6	47.8	50.6	52.1	52.0	60.8							
9-year	76.9	19.1	6.0	6.9	6.9	7.6	12.5	14.0	31.0	42.7	44.3	49.4	52.1	50.3								
10-year	76.9	16.9	5.7	6.8	6.8	7.4	12.4	13.7	29.8	42.6	43.6	49.4	51.2									
11-year	74.9	15.6	5.5	6.7	6.7	7.4	11.8	13.4	28.6	42.1	42.4	48.7										
12-year	74.9	15.3	5.3	6.7	6.7	7.2	11.7	13.3	27.8	41.7	40.6											
13-year	74.9	14.7	5.0	6.7	6.5	7.2	11.7	13.3	27.3	41.7												
14-year	74.9	14.7	4.8	6.3	6.5	6.8	11.7	13.1	26.7													
15-year	74.9	14.7	4.7	5.8	6.5	6.6	11.6	12.9														
16-year	74.9	14.7	4.6	5.7	6.3	6.4	11.4															
17-year	74.9	14.4	4.6	5.6	6.3	6.2																
18-year	74.9	13.1	4.6	5.3	6.3																	
19-year	74.9	13.1	4.4	5.3																		
20-year	74.9	13.1	4.3																			

^a Based on the SEER 9 areas (San Francisco, Connecticut, Detroit, Hawaii, Iowa, New Mexico, Seattle, Utah, and Atlanta).

Table 10.8
Kaposi Sarcoma

SEER^a Relative Survival (Percent)
By Year of Diagnosis

All Races, Males

Year of Diagnosis

	1975- 1979	1980- 1984	1985- 1989	1990	1991	1992	1993	1994	1995	1996	1997	1998	1999	2000	2001	2002	2003	2004	2005	2006	2007	2008
Survival Time																						
1-year	95.8	65.2	59.9	61.5	62.4	63.0	59.0	55.3	61.4	69.5	73.9	73.3	76.7	73.6	79.5	76.8	75.3	81.3	82.7	80.3	82.6	80.8
2-year	89.6	42.2	33.4	33.0	29.7	28.1	29.4	27.2	45.7	59.9	64.4	63.6	64.5	66.0	73.3	70.5	72.1	72.6	78.9	76.6	80.4	
3-year	87.3	33.5	19.3	19.4	14.7	16.1	19.0	20.5	41.8	54.3	60.9	59.2	60.8	59.8	68.6	66.2	66.7	69.0	75.2	74.2		
4-year	84.3	29.2	13.1	14.0	10.1	10.8	14.8	17.9	37.6	51.1	57.1	56.5	55.5	56.4	65.1	65.7	64.6	67.1	74.4			
5-year	84.2	25.7	9.5	9.4	7.8	8.8	13.3	16.8	35.0	48.0	56.0	55.7	54.4	53.8	63.4	59.1	64.2	65.6				
6-year	75.6	22.0	7.9	7.3	6.9	8.3	12.9	15.6	34.3	45.5	53.5	53.5	51.5	52.7	62.9	57.3	63.8					
7-year	74.3	20.6	6.7	6.8	6.6	7.6	12.5	14.5	32.5	44.5	49.9	51.9	50.7	52.7	62.9	57.3						
8-year	74.3	18.3	5.9	6.3	6.3	7.5	12.0	14.1	31.3	44.3	46.9	50.9	50.6	51.9	61.6							
9-year	74.3	17.1	5.2	6.1	5.8	7.4	11.8	13.4	30.3	42.3	43.6	49.7	50.6	50.1								
10-year	74.3	15.1	5.0	6.1	5.7	7.0	11.6	13.2	29.2	42.1	42.8	49.7	50.1									
11-year	69.1	13.8	4.8	6.1	5.5	7.0	11.0	12.8	28.1	41.7	41.4	48.8										
12-year	69.1	13.6	4.7	6.1	5.4	6.9	10.9	12.7	27.2	41.2	40.0											
13-year	69.1	13.0	4.4	6.1	5.2	6.9	10.9	12.6	26.7	41.2												
14-year	69.1	13.0	4.3	5.6	5.2	6.5	10.9	12.3	26.2													
15-year	69.1	12.9	4.2	5.3	5.1	6.3	10.8	12.1														
16-year	69.1	12.7	4.1	5.3	5.0	6.1	10.6															
17-year	69.1	12.7	4.1	5.1	4.9	5.9																
18-year	69.1	12.4	4.1	4.8	4.8																	
19-year	69.1	12.4	3.9	4.8																		
20-year	69.1	12.4	3.8																			

^a Based on the SEER 9 areas (San Francisco, Connecticut, Detroit, Hawaii, Iowa, New Mexico, Seattle, Utah, and Atlanta).

Table 10.9
Kaposi Sarcoma

SEER^a Relative Survival (Percent)
By Year of Diagnosis

All Races, Females

Year of Diagnosis

	1975- 1979	1980- 1984	1985- 1989	1990	1991	1992	1993	1994	1995	1996	1997	1998	1999	2000	2001	2002	2003	2004	2005	2006	2007	2008
Survival Time																						
1-year	93.9	91.7	83.7	79.9	90.2	74.9	71.5	82.0	87.6	78.6	79.8	85.5	75.7	81.8	86.7	89.4	69.4	100.0	64.6	89.8	80.3	39.9
2-year	90.9	85.7	79.0	56.3	79.9	53.9	71.5	56.2	86.4	78.6	75.1	85.5	69.8	81.8	67.5	81.1	69.4	97.0	64.6	89.8	72.5	
3-year	90.9	74.9	74.8	56.3	75.4	44.5	52.9	50.0	74.9	64.6	75.1	85.4	65.9	77.7	52.1	71.3	62.2	97.0	57.3	81.1		
4-year	83.6	71.3	74.3	52.0	75.4	33.1	52.9	46.0	70.5	64.6	75.1	85.4	65.9	67.5	52.1	63.1	62.2	97.0	57.3			
5-year	81.5	64.4	74.1	49.9	73.2	33.1	52.9	46.0	50.5	55.2	69.1	85.4	65.9	57.6	52.1	59.0	62.2	97.0				
6-year	81.5	62.6	74.1	45.0	69.4	28.2	52.9	45.6	50.5	49.7	69.1	81.2	65.9	47.5	52.1	56.8	62.2					
7-year	81.5	62.6	74.1	45.0	69.4	28.2	47.8	40.9	50.5	49.7	58.1	54.7	65.9	47.5	50.9	56.8						
8-year	81.5	55.2	66.7	45.0	69.4	24.4	47.8	40.9	50.5	49.7	58.1	19.6	65.9	47.5	46.2							
9-year	81.5	52.0	66.7	45.0	69.4	24.4	44.3	38.9	47.7	49.7	52.0	19.6	65.9	47.5								
10-year	81.5	46.3	60.4	45.0	69.4	24.4	44.3	38.9	44.9	49.7	52.0	19.6	63.5									
11-year	81.5	43.6	58.3	40.8	69.4	24.4	44.3	38.9	37.9	49.7	52.0	19.6										
12-year	81.5	43.1	49.5	40.8	69.4	24.4	44.3	38.9	37.9	49.7	46.8											
13-year	81.5	42.2	44.7	40.8	69.4	24.4	44.3	38.9	37.9	49.7												
14-year	81.5	42.2	32.9	40.8	69.4	24.4	44.3	38.9	36.7													
15-year	81.5	42.2	28.0	19.3	69.4	24.4	44.3	38.9														
16-year	81.5	42.2	28.0	19.3	69.4	24.4	44.3															
17-year	81.5	30.2	28.0	19.3	69.4	24.4																
18-year	80.9	17.1	28.0	19.3	69.4																	
19-year	80.9	17.1	28.0	19.3																		
20-year	80.9	17.1	28.0																			

^a Based on the SEER 9 areas (San Francisco, Connecticut, Detroit, Hawaii, Iowa, New Mexico, Seattle, Utah, and Atlanta).

Table 10.10
Kaposi Sarcoma

Risk of Being Diagnosed With Cancer in 10, 20 and 30 Years,
Lifetime Risk of Being Diagnosed with Cancer Given Alive and Cancer-Free at Current Age, and
Lifetime Risk of Dying from Cancer Given Alive at Current Age
Both Sexes, 2007-2009 By Race/Ethnicity

Race/ Ethnicity	Current Age	Risk of Being Diagnosed with Cancer				Risk of Dying from Cancer	Race/ Ethnicity	Current Age	Risk of Being Diagnosed with Cancer				Risk of Dying from Cancer
		+10 yrs	+20 yrs	+30 yrs	Ever				+10 yrs	+20 yrs	+30 yrs	Ever	
All Races	0	0.00	0.00	0.00	0.05	0.00	Asian/ Pacific Islander	0	0.00	0.00	0.00	0.02	0.00
	10	0.00	0.00	0.01	0.05	0.00		10	0.00	0.00	0.00	0.02	0.00
	20	0.00	0.01	0.02	0.05	0.00		20	0.00	0.00	0.01	0.02	0.00
	30	0.01	0.02	0.02	0.04	0.00		30	0.00	0.01	0.01	0.02	0.00
	40	0.01	0.02	0.02	0.04	0.00		40	0.00	0.01	0.01	0.01	0.00
	50	0.01	0.01	0.02	0.02	0.00		50	0.00	0.00	0.01	0.01	0.00
	60	0.01	0.01	0.02	0.02	0.00		60	0.00	0.00	0.01	0.01	0.00
	70	0.01	0.02	-	0.02	0.00		70	0.00	0.01	-	0.01	0.00
80	0.01	-	-	0.02	0.00	80	0.01	-	-	0.01	0.00		
White	0	0.00	0.00	0.00	0.04	0.00	American Indian/ Alaska Native ^a	0	0.00	0.00	0.00	0.02	0.00
	10	0.00	0.00	0.01	0.04	0.00		10	0.00	0.00	0.00	0.02	0.00
	20	0.00	0.01	0.02	0.04	0.00		20	0.00	0.00	0.01	0.02	0.00
	30	0.01	0.02	0.02	0.04	0.00		30	0.00	0.01	0.01	0.02	0.00
	40	0.01	0.01	0.02	0.03	0.00		40	0.01	0.01	0.01	0.02	0.00
	50	0.00	0.01	0.02	0.02	0.00		50	0.00	0.00	0.01	0.01	0.00
	60	0.00	0.01	0.02	0.02	0.00		60	0.00	0.01	0.01	0.01	0.00
	70	0.01	0.02	-	0.02	0.00		70	0.01	0.01	-	0.01	0.00
80	0.01	-	-	0.02	0.00	80	0.00	-	-	0.00	0.00		
Black	0	0.00	0.00	0.01	0.07	0.01	Hispanic ^b	0	0.00	0.00	0.00	0.08	0.01
	10	0.00	0.01	0.03	0.07	0.01		10	0.00	0.00	0.01	0.08	0.01
	20	0.01	0.03	0.05	0.07	0.01		20	0.00	0.01	0.03	0.08	0.01
	30	0.02	0.04	0.05	0.06	0.01		30	0.01	0.02	0.03	0.07	0.01
	40	0.02	0.03	0.03	0.04	0.01		40	0.01	0.02	0.03	0.07	0.00
	50	0.01	0.01	0.02	0.02	0.00		50	0.01	0.02	0.03	0.05	0.00
	60	0.01	0.01	0.01	0.01	0.00		60	0.01	0.02	0.04	0.05	0.00
	70	0.01	0.01	-	0.01	0.00		70	0.01	0.03	-	0.04	0.00
80	0.00	-	-	0.00	0.00	80	0.02	-	-	0.03	0.00		

Devcan Version 6.6.1, April 2012, National Cancer Institute (<http://surveillance.cancer.gov/devcan/>).

Source: Incidence data are from the SEER 18 areas (San Francisco, Connecticut, Detroit, Hawaii, Iowa, New Mexico, Seattle, Utah, Atlanta, San Jose-Monterey, Los Angeles, Alaska Native Registry, Rural Georgia, California excluding SF/SJM/LA, Kentucky, Louisiana, New Jersey, and Georgia excluding ATL/RG). Mortality data are from the NCHS public use data file for the total US.

^a Underlying incidence and mortality data for American Indian/Alaska Native are based on the CHSDA (Contract Health Service Delivery Area) counties.

^b Hispanic is not mutually exclusive from whites, blacks, Asian/Pacific Islanders, and American Indians/Alaska Natives. Underlying incidence data for Hispanics are based on NHIA and exclude cases from the Alaska Native Registry. Underlying mortality data for Hispanics exclude deaths from the District of Columbia, Minnesota, New Hampshire, North Dakota and South Carolina.

- Statistic could not be calculated.
A percent of 0.00 represents a value that is below 0.005.

Table 10.11
Kaposi Sarcoma

Risk of Being Diagnosed With Cancer in 10, 20 and 30 Years,
Lifetime Risk of Being Diagnosed with Cancer Given Alive and Cancer-Free at Current Age, and
Lifetime Risk of Dying from Cancer Given Alive at Current Age
Males, 2007-2009 By Race/Ethnicity

Race/ Ethnicity	Current Age	Risk of Being Diagnosed with Cancer				Risk of Dying from Cancer	Race/ Ethnicity	Current Age	Risk of Being Diagnosed with Cancer				Risk of Dying from Cancer
		+10 yrs	+20 yrs	+30 yrs	Ever				+10 yrs	+20 yrs	+30 yrs	Ever	
All Races	0	0.00	0.00	0.01	0.08	0.01	Asian/ Pacific Islander	0	0.00	0.00	0.00	0.03	0.00
	10	0.00	0.01	0.02	0.08	0.01		10	0.00	0.00	0.01	0.03	0.00
	20	0.01	0.02	0.04	0.08	0.01		20	0.00	0.01	0.01	0.03	0.00
	30	0.02	0.04	0.05	0.08	0.01		30	0.01	0.01	0.02	0.03	0.00
	40	0.02	0.03	0.04	0.06	0.00		40	0.01	0.01	0.01	0.03	0.00
	50	0.01	0.02	0.03	0.04	0.00		50	0.00	0.01	0.01	0.02	0.00
	60	0.01	0.02	0.03	0.03	0.00		60	0.00	0.01	0.02	0.02	0.00
	70	0.01	0.02	-	0.03	0.00		70	0.00	0.01	-	0.01	0.00
80	0.02	-	-	0.03	0.00	80	0.01	-	-	0.01	0.00		
White	0	0.00	0.00	0.01	0.07	0.00	American Indian/ Alaska Native ^a	0	0.00	0.00	0.00	0.02	0.00
	10	0.00	0.01	0.02	0.08	0.00		10	0.00	0.00	0.00	0.02	0.00
	20	0.01	0.02	0.04	0.08	0.00		20	0.00	0.00	0.02	0.02	0.00
	30	0.01	0.03	0.04	0.07	0.00		30	0.00	0.02	0.02	0.02	0.00
	40	0.02	0.03	0.04	0.06	0.00		40	0.02	0.02	0.02	0.02	0.00
	50	0.01	0.02	0.03	0.04	0.00		50	0.00	0.00	0.00	0.00	0.00
	60	0.01	0.02	0.03	0.03	0.00		60	0.00	0.00	0.00	0.00	0.00
	70	0.01	0.03	-	0.03	0.00		70	0.00	0.00	-	0.00	0.00
80	0.02	-	-	0.03	0.00	80	0.00	-	-	0.00	0.00		
Black	0	0.00	0.00	0.02	0.13	0.02	Hispanic ^b	0	0.00	0.00	0.01	0.12	0.01
	10	0.00	0.02	0.06	0.13	0.02		10	0.00	0.01	0.02	0.12	0.01
	20	0.02	0.06	0.10	0.13	0.02		20	0.01	0.02	0.05	0.12	0.01
	30	0.04	0.08	0.09	0.11	0.01		30	0.02	0.04	0.05	0.12	0.01
	40	0.04	0.05	0.06	0.07	0.01		40	0.02	0.04	0.05	0.10	0.01
	50	0.01	0.02	0.03	0.03	0.00		50	0.01	0.03	0.05	0.08	0.01
	60	0.01	0.02	0.02	0.02	0.00		60	0.02	0.04	0.05	0.07	0.01
	70	0.01	0.02	-	0.02	0.00		70	0.02	0.04	-	0.06	0.01
80	0.00	-	-	0.00	0.00	80	0.03	-	-	0.05	0.01		

Devcan Version 6.6.1, April 2012, National Cancer Institute (<http://surveillance.cancer.gov/devcan/>).

Source: Incidence data are from the SEER 18 areas (San Francisco, Connecticut, Detroit, Hawaii, Iowa, New Mexico, Seattle, Utah, Atlanta, San Jose-Monterey, Los Angeles, Alaska Native Registry, Rural Georgia, California excluding SF/SJM/LA, Kentucky, Louisiana, New Jersey, and Georgia excluding ATL/RG). Mortality data are from the NCHS public use data file for the total US.

^a Underlying incidence and mortality data for American Indian/Alaska Native are based on the CHSDA (Contract Health Service Delivery Area) counties.

^b Hispanic is not mutually exclusive from whites, blacks, Asian/Pacific Islanders, and American Indians/Alaska Natives. Underlying incidence data for Hispanics are based on NHIA and exclude cases from the Alaska Native Registry. Underlying mortality data for Hispanics exclude deaths from the District of Columbia, Minnesota, New Hampshire, North Dakota and South Carolina.

- Statistic could not be calculated.
A percent of 0.00 represents a value that is below 0.005.

Table 10.12
Kaposi Sarcoma

Risk of Being Diagnosed With Cancer in 10, 20 and 30 Years,
Lifetime Risk of Being Diagnosed with Cancer Given Alive and Cancer-Free at Current Age, and
Lifetime Risk of Dying from Cancer Given Alive at Current Age
Females, 2007-2009 By Race/Ethnicity

Race/ Ethnicity	Current Age	Risk of Being Diagnosed with Cancer				Risk of Dying from Cancer	Race/ Ethnicity	Current Age	Risk of Being Diagnosed with Cancer				Risk of Dying from Cancer
		+10 yrs	+20 yrs	+30 yrs	Ever				+10 yrs	+20 yrs	+30 yrs	Ever	
All Races	0	0.00	0.00	0.00	0.01	0.00	Asian/ Pacific Islander	0	0.00	0.00	0.00	0.00	0.00
	10	0.00	0.00	0.00	0.01	0.00		10	0.00	0.00	0.00	0.00	0.00
	20	0.00	0.00	0.00	0.01	0.00		20	0.00	0.00	0.00	0.00	0.00
	30	0.00	0.00	0.00	0.01	0.00		30	0.00	0.00	0.00	0.00	0.00
	40	0.00	0.00	0.00	0.01	0.00		40	0.00	0.00	0.00	0.00	0.00
	50	0.00	0.00	0.00	0.01	0.00		50	0.00	0.00	0.00	0.00	0.00
	60	0.00	0.00	0.01	0.01	0.00		60	0.00	0.00	0.00	0.00	0.00
	70	0.00	0.01	-	0.01	0.00		70	0.00	0.00	-	0.00	0.00
80	0.01	-	-	0.01	0.00	80	0.00	-	-	0.00	0.00		
White	0	0.00	0.00	0.00	0.01	0.00	American Indian/ Alaska Native ^a	0	0.00	0.00	0.00	0.02	0.00
	10	0.00	0.00	0.00	0.01	0.00		10	0.00	0.00	0.00	0.02	0.00
	20	0.00	0.00	0.00	0.01	0.00		20	0.00	0.00	0.00	0.02	0.00
	30	0.00	0.00	0.00	0.01	0.00		30	0.00	0.00	0.00	0.02	0.00
	40	0.00	0.00	0.00	0.01	0.00		40	0.00	0.00	0.00	0.02	0.00
	50	0.00	0.00	0.00	0.01	0.00		50	0.00	0.00	0.02	0.02	0.00
	60	0.00	0.00	0.01	0.01	0.00		60	0.00	0.02	0.02	0.02	0.00
	70	0.00	0.01	-	0.01	0.00		70	0.02	0.02	-	0.02	0.00
80	0.01	-	-	0.01	0.00	80	0.00	-	-	0.00	0.00		
Black	0	0.00	0.00	0.00	0.01	0.00	Hispanic ^b	0	0.00	0.00	0.00	0.03	0.00
	10	0.00	0.00	0.00	0.01	0.00		10	0.00	0.00	0.00	0.03	0.00
	20	0.00	0.00	0.01	0.01	0.00		20	0.00	0.00	0.00	0.03	0.00
	30	0.00	0.01	0.01	0.01	0.00		30	0.00	0.00	0.00	0.03	0.00
	40	0.00	0.01	0.01	0.01	0.00		40	0.00	0.00	0.01	0.03	0.00
	50	0.00	0.00	0.01	0.01	0.00		50	0.00	0.00	0.01	0.03	0.00
	60	0.00	0.00	0.01	0.01	0.00		60	0.00	0.01	0.03	0.03	0.00
	70	0.00	0.00	-	0.00	0.00		70	0.01	0.03	-	0.03	0.00
80	0.00	-	-	0.00	0.00	80	0.02	-	-	0.02	0.00		

Devcan Version 6.6.1, April 2012, National Cancer Institute (<http://surveillance.cancer.gov/devcan/>).

Source: Incidence data are from the SEER 18 areas (San Francisco, Connecticut, Detroit, Hawaii, Iowa, New Mexico, Seattle, Utah, Atlanta, San Jose-Monterey, Los Angeles, Alaska Native Registry, Rural Georgia, California excluding SF/SJM/LA, Kentucky, Louisiana, New Jersey, and Georgia excluding ATL/RG). Mortality data are from the NCHS public use data file for the total US.

^a Underlying incidence and mortality data for American Indian/Alaska Native are based on the CHSDA (Contract Health Service Delivery Area) counties.

^b Hispanic is not mutually exclusive from whites, blacks, Asian/Pacific Islanders, and American Indians/Alaska Natives. Underlying incidence data for Hispanics are based on NHIA and exclude cases from the Alaska Native Registry. Underlying mortality data for Hispanics exclude deaths from the District of Columbia, Minnesota, New Hampshire, North Dakota and South Carolina.

- Statistic could not be calculated.
A percent of 0.00 represents a value that is below 0.005.

Table 10.13
Kaposi Sarcoma

SEER Incidence
Age-Adjusted Rates and Trends^a
By Race/Ethnicity and Sex

SEER Incidence	SEER 18 Areas ^b			SEER 13 Areas ^b			SEER 9 Areas ^b		
	Rate 2005-2009			Trend 2000-2009 ^c			Trend 2000-2009 ^d		
	Rate per 100,000 persons			AAPC (%)			AAPC (%)		
RACE/ETHNICITY	Total	Males	Females	Total	Males	Females	Total	Males	Females
All Races	0.6	1.1	0.1	-2.6*	-2.5*	-6.0*	-2.0*	-1.9*	-5.7*
White	0.5	1.0	0.1	-2.6*	-2.5*	-	-1.9*	-1.9*	-5.2*
White Hispanic ^e	0.8	1.4	0.2	-2.9	-3.4	-	-	-	-
White Non-Hispanic ^e	0.4	0.8	0.1	-2.4	-2.4	-	-	-	-
Black	1.1	2.1	0.2	-3.2*	-3.1*	-	-3.0*	-3.0*	-
Asian/Pacific Islander	0.2	0.4	-	-	-	-	-	-	-
Amer Ind/Alaska Nat ^f	-	-	-	-	-	-	-	-	-
Hispanic ^e	0.8	1.4	0.2	-2.8	-3.5	-	-	-	-

The AAPC is the Average Annual Percent Change over the time interval. The AAPCs are calculated by the Joinpoint Regression Program Version 3.5, April 2011, National Cancer Institute.

- Statistic not shown. Rate based on less than 16 cases for the time interval.

Trend based on less than 10 cases for at least one year within the time interval.

a Rates are age-adjusted to the 2000 US Std Population (19 age groups - Census P25-1130). Trends are based on rates age-adjusted to the 2000 US Std Population (19 age groups - Census P25-1130).

b The SEER 9 areas are San Francisco, Connecticut, Detroit, Hawaii, Iowa, New Mexico, Seattle, Utah, and Atlanta.

The SEER 13 areas comprise the SEER 9 areas plus San Jose-Monterey, Los Angeles, the Alaska Native Registry, and Rural Georgia.

The SEER 18 areas comprise the SEER 13 areas plus California excluding SF/SJM/LA, Kentucky, Louisiana, New Jersey, and Georgia excluding ATL/RG.

c The 2000-2009 AAPC estimates are based on a Joinpoint analysis with up to 3 Joinpoints over diagnosis years 1992-2009.

d The 2000-2009 AAPC estimates are based on a Joinpoint analysis with up to 5 Joinpoints over diagnosis years 1975-2009.

e Hispanic and Non-Hispanic are not mutually exclusive from whites, blacks, Asian/Pacific Islanders, and American Indians/Alaska Natives. Incidence data for Hispanics and Non-Hispanics are based on NHIA and exclude cases from the Alaska Native Registry.

f Incidence data for American Indian/Alaska Native are based on the CHSDA (Contract Health Service Delivery Area) counties.

* The APC is significantly different from zero (p<.05).

Table 10.14
Kaposi Sarcoma

Age-Adjusted SEER Incidence Rates^a
By Registry, Race and Sex

	All Races			Whites			Blacks		
	Total	Males	Females	Total	Males	Females	Total	Males	Females
<u>SEER Incidence Rates^a, 2005-2009</u>									
California	0.70	1.33	0.09	0.69	1.32	0.07	1.32	2.45	0.26
Greater Bay Area	0.95	1.79	0.11	1.10	2.05	-	1.99	3.61	-
San Francisco-Oakland	1.23	2.35	0.13	1.44	2.74	-	2.18	4.03	-
San Jose-Monterey	0.45	0.81	-	0.50	0.89	-	-	-	-
Los Angeles	1.03	2.05	0.08	1.07	2.08	0.09	1.43	3.10	-
Greater California	0.44	0.80	0.09	0.40	0.75	0.06	0.94	1.46	-
Connecticut	0.35	0.67	-	0.30	0.62	-	-	-	-
Detroit	0.48	0.85	0.15	0.30	0.46	-	0.89	1.87	-
Georgia	0.74	1.44	0.09	0.45	0.87	-	1.32	2.74	-
Atlanta	1.46	2.86	-	0.97	1.84	-	2.23	4.69	-
Rural Georgia	-	-	-	-	-	-	-	-	-
Greater Georgia	0.28	0.53	-	0.21	0.40	-	0.43	0.83	-
Hawaii	0.38	0.70	-	-	-	-	-	-	-
Iowa	0.11	0.23	-	-	-	-	-	-	-
Kentucky	0.21	0.39	-	0.19	0.34	-	-	-	-
Louisiana	0.56	0.99	0.17	0.50	0.89	-	0.72	1.23	-
New Jersey	0.50	0.90	0.16	0.41	0.76	0.11	0.98	1.68	-
New Mexico	0.50	0.96	-	0.47	0.89	-	-	-	-
Seattle-Puget Sound	0.53	1.03	-	0.50	0.97	-	-	-	-
Utah	0.19	0.38	-	0.19	0.39	-	-	-	-
9 SEER Areas ^b	0.66	1.27	0.08	0.54	1.03	0.07	1.58	3.16	0.21
11 SEER Areas ^b	0.73	1.42	0.08	0.66	1.26	0.07	1.55	3.13	0.17
13 SEER Areas ^b	0.73	1.41	0.08	0.66	1.26	0.07	1.53	3.10	0.16
18 SEER Areas ^b	0.57	1.08	0.09	0.51	0.96	0.07	1.11	2.12	0.21

^a Rates are per 100,000 and are age-adjusted to the 2000 US Std Population (19 age groups - Census P25-1130)

^b The SEER 9 areas are San Francisco, Connecticut, Detroit, Hawaii, Iowa, New Mexico, Seattle, Utah and Atlanta.

The SEER 11 areas comprise the SEER 9 areas plus San Jose-Monterey and Los Angeles.

The SEER 13 areas comprise the SEER 11 areas plus the Alaska Native Registry and Rural Georgia.

The SEER 18 areas comprise the SEER 13 areas plus California excluding SF/SJM/LA, Kentucky, Louisiana, New Jersey and Georgia excluding ATL/RG.

- Statistic not shown. Rate based on less than 16 cases for the time interval.

Table 10.15
Kaposi SarcomaEstimated United States Cancer Prevalence Counts^a on January 1, 2009
By Race/Ethnicity, Sex and Years Since Diagnosis

Years Since Diagnosis		0 to <5	5 to <10	10 to <15	15 to <20	20 to <25	25 to <30	0 to <19 ^e	0 to <34 ^e	>=34 ^g	Complete ^h
<u>Race</u>	<u>Sex</u>										
All Races ^b	Both Sexes	7,129	5,158	7,229	2,809	880	262	21,959	23,623	+	+
	Males	6,715	4,810	7,001	2,599	869	216	20,770	22,336	+	+
	Females	414	348	228	210	11	46	1,189	1,287	+	+
White ^b	Both Sexes	4,951	3,763	5,833	2,373	747	190	16,615	17,989	+	+
	Males	4,662	3,462	5,680	2,221	736	155	15,731	17,018	+	+
	Females	289	301	153	152	11	35	884	971	+	+
Black ^b	Both Sexes	1,839	1,172	940	276	56	38	4,193	4,333	+	+
	Males	1,732	1,137	898	241	56	38	3,974	4,114	+	+
	Females	107	35	42	35	0	0	219	219	+	+
Asian/ Pacific Islander ^c	Both Sexes	106	88	88	+	+	+	291	+	+	+
	Males	101	88	88	+	+	+	286	+	+	+
	Females	5	0	0	+	+	+	5	+	+	+
Hispanic ^d	Both Sexes	1,236	908	1,261	+	+	+	3,785	+	+	+
	Males	1,174	862	1,221	+	+	+	3,612	+	+	+
	Females	62	46	40	+	+	+	173	+	+	+

Estimated prevalence percent^a on January 1, 2009, of the SEER 11 population diagnosed in the previous 19 years
By Age at Prevalence, Race/Ethnicity and Sex

Age at Prevalence		All Ages	0-9	10-19	20-29	30-39	40-49	50-59	60-69	70-79	80+	Age-Adjusted ^f All Ages
<u>Race</u>	<u>Sex</u>											
All Races ^c	Both Sexes	0.0072%	-	-	0.0009%	0.0064%	0.0198%	0.0141%	0.0082%	0.0071%	0.0128%	0.0072%
	Males	0.0140%	-	-	0.0017%	0.0125%	0.0389%	0.0285%	0.0163%	0.0142%	0.0245%	0.0141%
	Females	0.0006%	-	-	-	0.0002%	0.0006%	0.0003%	0.0010%	0.0015%	0.0062%	0.0005%
White ^c	Both Sexes	0.0072%	-	-	0.0007%	0.0056%	0.0194%	0.0144%	0.0084%	0.0080%	0.0131%	0.0070%
	Males	0.0138%	-	-	0.0014%	0.0107%	0.0374%	0.0287%	0.0164%	0.0154%	0.0250%	0.0137%
	Females	0.0006%	-	-	-	-	0.0005%	-	0.0009%	0.0020%	0.0064%	0.0005%
Black ^c	Both Sexes	0.0103%	-	-	0.0025%	0.0154%	0.0313%	0.0182%	0.0110%	0.0030%	0.0107%	0.0109%
	Males	0.0209%	-	-	0.0048%	0.0327%	0.0661%	0.0387%	0.0223%	0.0074%	-	0.0227%
	Females	0.0007%	-	-	-	-	-	-	-	-	0.0109%	0.0008%
Asian/ Pacific Islander ^c	Both Sexes	0.0019%	-	-	-	0.0014%	0.0048%	0.0039%	0.0022%	0.0033%	0.0037%	0.0019%
	Males	0.0039%	-	-	-	0.0028%	0.0097%	0.0084%	0.0048%	0.0076%	0.0081%	0.0040%
	Females	-	-	-	-	-	-	-	-	-	-	-
Hispanic ^d	Both Sexes	0.0072%	-	-	0.0014%	0.0077%	0.0237%	0.0174%	0.0102%	0.0138%	0.0305%	0.0096%
	Males	0.0134%	-	-	0.0025%	0.0141%	0.0444%	0.0351%	0.0201%	0.0265%	0.0578%	0.0183%
	Females	0.0007%	-	-	-	-	0.0009%	-	-	0.0044%	0.0145%	0.0011%

^a US 2009 cancer prevalence counts are based on 2009 cancer prevalence proportions from the SEER registries and 1/1/2009 US population estimates based on the average of 2008 and 2009 population estimates from the US Bureau of the Census. Prevalence was calculated using the First Malignant Primary Only for a person.

^{b c d} Statistics based on (b) SEER 9 Areas (c) SEER 11 Areas and Rural Georgia (d) NHIA for Hispanic for SEER 11 Areas and Rural Georgia.

^e Maximum limited-duration prevalence: 34 years for 1975-2009 SEER 9 data; 19 years for 1990-2009 SEER 11 data (used to calculate prevalence for Hispanics and Asian Pacific Islanders).

^f Percentages are age-adjusted to the 2000 US Standard Population (19 age groups - Census P25-1130) by 5-year age groups.

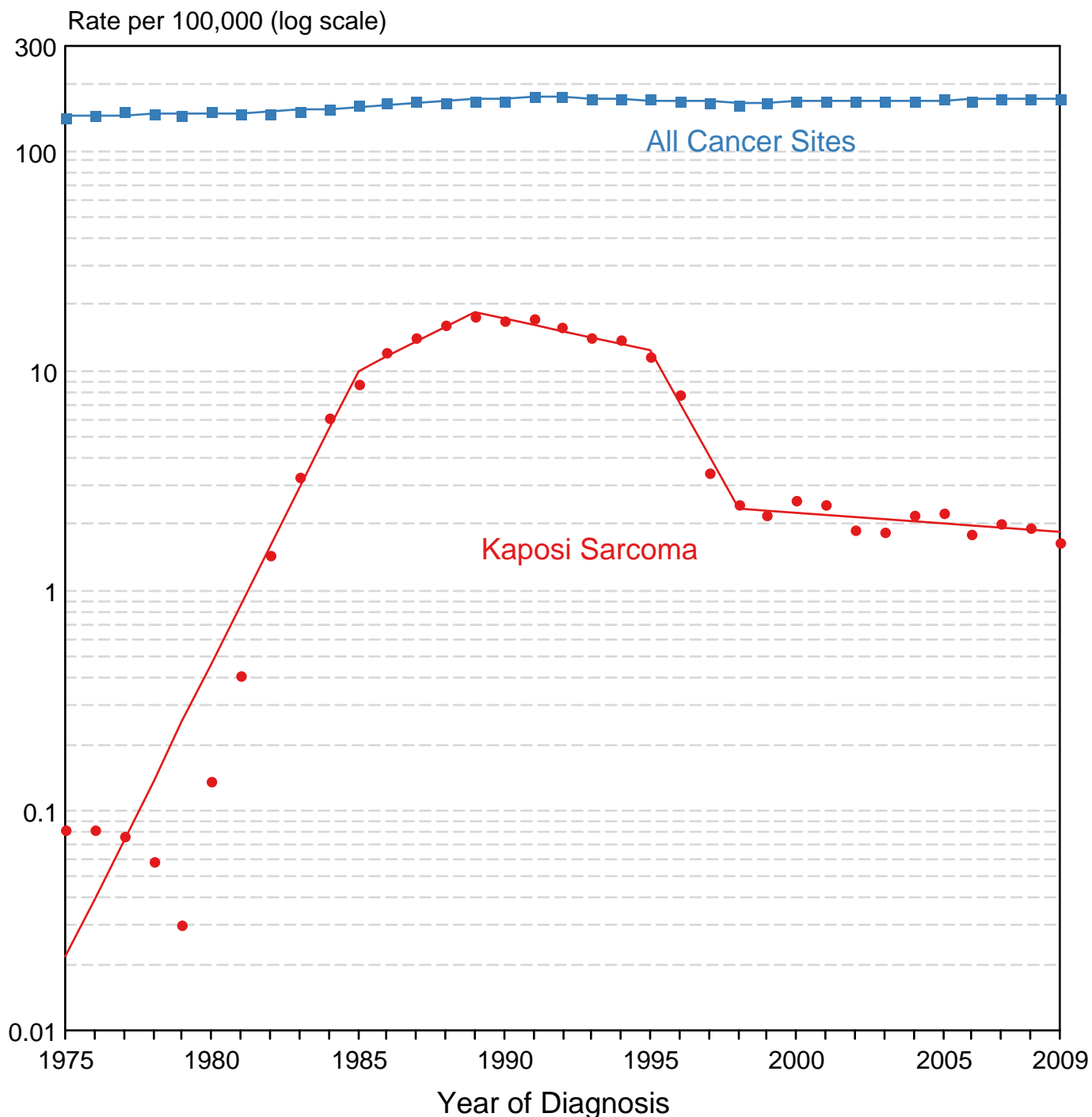
^{g h i} (g) Cases diagnosed more than 34 years ago were estimated using the completeness index method (Capocaccia et. al. 1997, Merrill et. al. 2000). (h) Complete prevalence is obtained by summing 0 to <34 and >=34. (i) Age-specific completeness index was approximated using empirical data from historical Connecticut tumor registry.

- Statistic not shown. Statistic based on fewer than 5 cases estimated alive in SEER for the time interval.

+ Not available.

Figure 10.1

All Cancer Sites vs Kaposi Sarcoma SEER Incidence Rates, 1975-2009 Males, Ages 20-54



Source: SEER 9 areas.
Rates are age-adjusted to the 2000 US Std Population (19 age groups - Census P25-1103).
Regression lines are calculated using the Joinpoint Regression Program Version 3.5, April 2011,
National Cancer Institute.

All SEER excluding
San Francisco/Oakland
Males, Ages 20-54
1975-2009

San Francisco/Oakland
Males, Ages 20-54
1975-2009

San Francisco County/City
Males, Ages 20-54
1975-2009

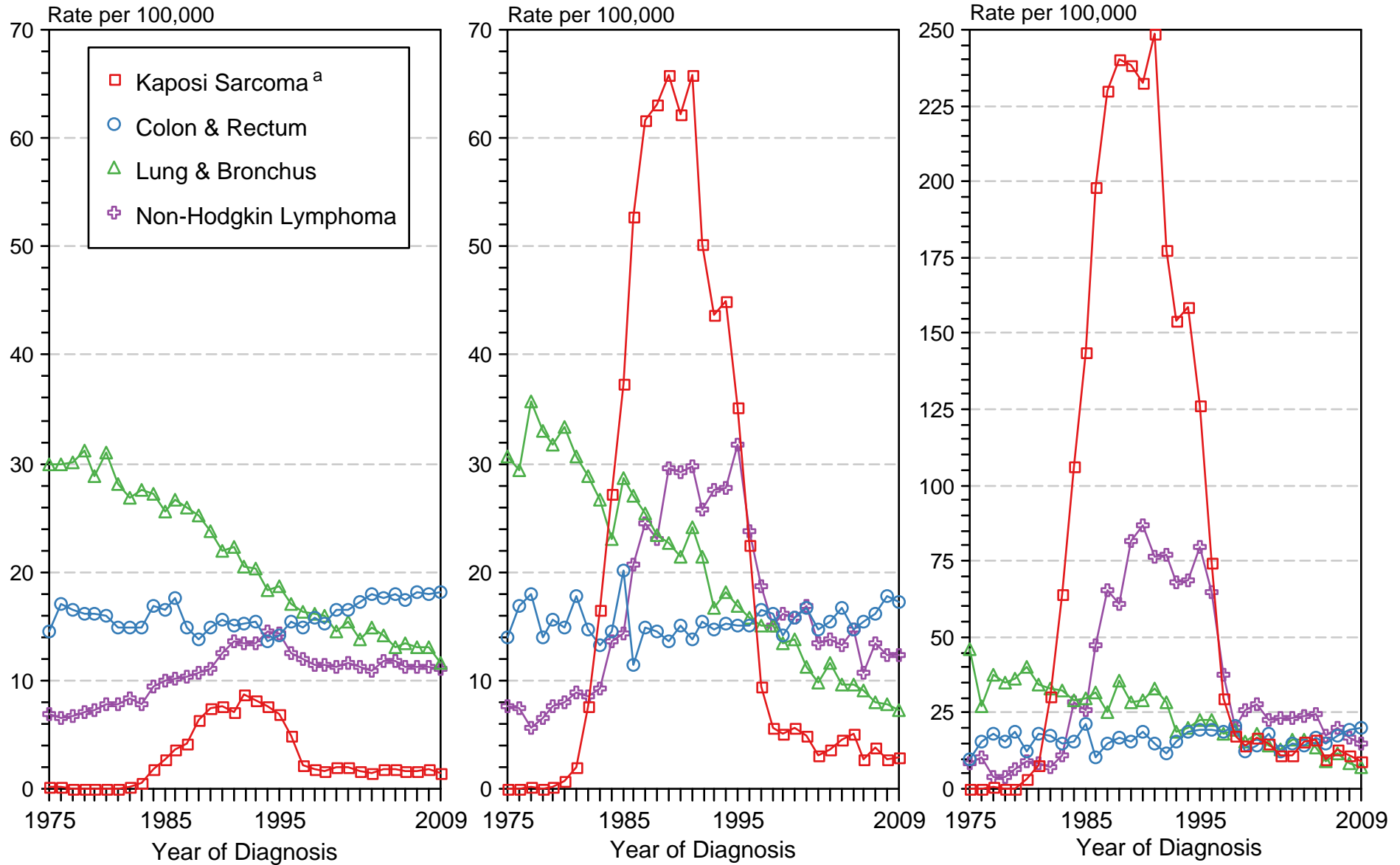


Figure 10.2

Source: SEER 9 areas. Rates are age-adjusted to the 2000 US Std Population (19 age groups - Census P25-1103).
^a Kaposi Sarcoma cases are excluded from Colon & Rectum, Lung & Bronchus, and Non-Hodgkin Lymphoma cases.