

### **THIS ISSUE'S THEME: LAUNDROMAT**

Cleaning and drying clothes has gotten pretty sophisticated these days. No longer is a washing machine just about water and soap, but you can wash clothes with a soap pod, have your washing machine diagnose its own problems, reduce water and energy requirements, and steam clothes to eliminate allergens.

We at PMB like to think we're moving into the 21<sup>st</sup> century too with OAOP and other paperless systems, such as eventual online access to confidential documents for external users. That being said, we do have a big change coming in spring 2013 when we move to a LEED-certified building in Rockville, called NCI Shady Grove. Details will be provided in upcoming issues...



### **PRESOAKING MADE OAOP CYCLE SQUEAKY CLEAN**

Thanks go to all who made the transition from paper CDRs to OAOP by the May 31<sup>st</sup> deadline! PMB tried really hard to give advanced notice, troubleshoot problems, and otherwise educate sites for many months prior to the deadline. It looks like our OAOP presoaking attempt worked to make a spotless transition for most sites.

There are still a few of you faxing paper orders. We received 39 standard orders and 10 blinded orders during June and 10 standard orders already in July. There's no way around it—you need to get your head out of the lint filter and learn the machine settings. Instructions for getting started are found on the PMB web site

[http://ctep.cancer.gov/branches/pmb/faq/docs/how\\_to\\_access\\_oaop.pdf](http://ctep.cancer.gov/branches/pmb/faq/docs/how_to_access_oaop.pdf)

If the instruction sheet still doesn't work for you, contact PMB at [PMBAfterHours@mail.nih.gov](mailto:PMBAfterHours@mail.nih.gov) for general information. The CTEP Registration Help Desk can spot clean questions about associate registration, establishing an IAM account, and managing designees. Contact them at [CTEPREGHelp@ctep.nci.nih.gov](mailto:CTEPREGHelp@ctep.nci.nih.gov) or by phone at 703-738-9171. Phone help is available Monday through Friday from 8:30am to 4:30pm Eastern Time.

U.S. DEPARTMENT OF HEALTH AND HUMAN SERVICES

National Institutes of Health  
National Cancer Institute

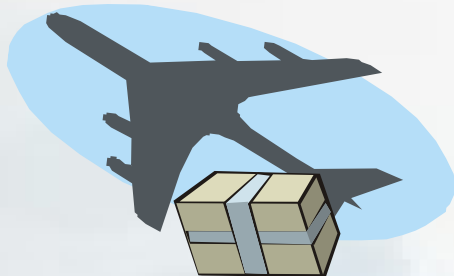
### **PMB RUNNING AT FULL LOAD CAPACITY**

PMB welcomes two new pharmacists to the laundry room. Cynthia Jiles, previously contracted with PMB, is now a federal employee. She brings a wealth of experience with her, including more than 20 years in pediatric hospital pharmacy and more recently investigational drug management for pediatric clinical trials.

Jennifer Thompson is used to the rapid spin speed of monitoring inpatient hematology patients as a clinical specialist. Until very recently, she was working at a more variable speed in an investigational drug services pharmacy and serving as internal auditor for NCI-sponsored clinical trials.



## **PRESSING NEED TO KEEP SHIPMENTS UNDER WRAPS**



We have recently seen a number of shipments get lost or forgotten between the loading docks and the pharmacy, resulting in wasted investigational supplies. Even as temperatures around the country approach those of a Rowenta steam iron, most of our ambient temperature agents are fine; but, we run into trouble with agents shipped under refrigerated temperatures. Pay special attention to agents that are shipped at ambient temperature, but must be refrigerated once received. These agents are especially sensitive to any time delay between the docks and the pharmacy.

While we have information to support our shipping methods based on estimated transit times, we can't anticipate every possible delay. If your site has a main receiving area, please make sure that you have an efficient notification procedure in place with the receiving area for shipment pick-ups. If needed, make procedural alterations to ensure that all pleats in your plan are firmly creased. Also notify your colleagues of pending shipments if you plan to be on vacation.

## **LAUNDRY PRODUCTS**

How are laundry products like PMB FAQs? They're not really, but perhaps our readers will want to check out the entire list of PMB FAQs at <http://ctep.cancer.gov/branches/pmb/faq.htm>. Here are a few of the more popular FAQs:

- Turning the Tide on CDRs: Using OAOP
- Shout! My shipment is missing!
- Bleaching DARF Errors
- Investigational vs Commercial Agents: Resolve the Mix-up
- Softening Agent Inventory with Nellie's Dryer Balls



## **UNUSED ORDER SELECTIONS**

Most of us use the same 2 or 3 selections when washing clothes. Some selections are rarely used. For instance, who uses the extended rinse cycle? Like when placing an order through the OAOP, some fields are usually left blank. Take a look at those big, empty boxes identified as order comments and designee comments – what goes in them?

The order comments field is for communication from PMB to the site and will display on the shipping record. The designee comments field is for sites to send information to PMB at the time of ordering. Rather than pushing all our buttons so we have to call about your order, use smart settings by including information such as calculated dose or number of vials or bottles needed for one dose or cycle, or weight if your agent's dose is weight-based.

If your last request was reduced due to a shortage, remind us. For example: "Last order reduced from 10 vials to 5 at PMB's request" or "Originally ordered June 25<sup>th</sup> but asked to wait until July 8<sup>th</sup> to submit request" or "Need at least 3 bottles to get through the next 2 weeks." Did a package sit forgotten over a 3-day weekend in a hot, airless room? "Package received Friday the 13<sup>th</sup> and stored improperly over the weekend. Contents not viable."

Including comments with your order means the system utilizes more available options and possibly avoids a service call or interrupted service.





## **SUNBURN CANNOT BE WASHED AWAY**

According to the CDC, one of the most common types of cancer in the US is skin cancer. Basal cell and squamous cell carcinoma are the two most common types followed by melanoma; however, melanoma is the most deadly form of skin cancer. In 2008, 60,000 people were diagnosed with melanoma, and approximately 8,600 people died from the disease. Currently in the US, melanoma is the fifth and seventh most common cancer in men and women, respectively. Surgical resection is successful treatment in early stages of the disease, but prognosis for metastatic melanoma is dismal, with an overall 5-year mortality rate of 90%.

Ultraviolet (UV) radiation exposure is the biggest risk for developing skin cancer. Children do not commonly develop skin cancer, but significant sun exposure before the age of 20 increases risk into adulthood. Per the CDC, people with a history of one or more blistering sunburns in their youth are more likely to develop basal cell cancer and two times more likely to develop melanoma than those without sunburn.

Summer is here and it's VERY HOT. Children are very sensitive to UV radiation. Their skin needs protection from UV rays whenever they're outdoors, even during cool and cloudy days. Clouds do not block UV rays, they filter them, and sometimes only slightly.

What protections can you take?

- Seek shade, especially during midday hours. Kids should not play in the sun during the hours between 10 a.m. and 4 p.m.
- Cover up. It may be difficult to have kids wear long sleeved T-shirts or pants when it's 90° F outside – but do it whenever it's possible. Also, get a hat or a cap.
- Apply sunscreen with Sun Protection Factor (SPF) of 15 or higher. Unprotected skin can be damaged by the sun's UV rays in as little as 15 minutes. Yet it can take up to 12 hours for skin to show the full effect of sun exposure. So, if your child's skin looks "a little pink" today, it may really be bright red tomorrow morning. To prevent further burning, get your child out of the sun. Unlike grass stains and muddy shoes, sunburn cannot be washed or wiped away.
- Wear sun glasses that have 100% UVA/UVB protection. Eyes exposed to UV rays can lead to cataracts later in life.

Children are not immune to sunburn. Sunscreen is only one of many protections needed to reduce sun exposure. Remember, too much sun hurts!

## **JOKES**

What did the first sock say to the second sock in the dryer?

I'll see you next time around.

How did the man feel when carrying his heavy laundry basket?

He felt hampered.

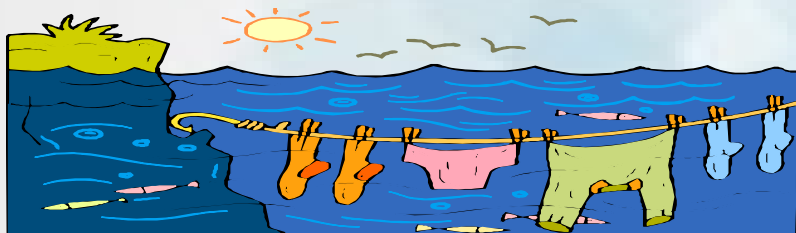


### HIGH EFFICIENCY COOPERATIVE GROUPS

The NCI adult cooperative clinical trials groups launched an integration initiative in April 2010 to minimize laundry sorting and maximize washing machine efficiency. The strategy reduces the number of laundry loads by combining the nine adult cooperative groups into maximum of four. The American College of Surgeons Oncology Group (ACOSOG), Cancer and Leukemia Group B (CALGB), and North Central Cancer Treatment Group (NCCTG) recently consolidated their operations into one laundry basket called the Alliance for Clinical Trials in Oncology.

Through High Efficiency (HE) washing technology, the Alliance eases the workload on the Cancer Trials Support Unit. New Alliance protocols designate either ACOSOG, CALGB, or NCCTG as the lead organization; but, the protocol nomenclature system reflects Alliance protocol numbers. See [www.alliance-website.org](http://www.alliance-website.org) for more information. So stock up on HE detergent\* and check the laundromat bulletin board for additional cooperative group merger announcements in the near future.

\*only purchase HE detergent from reputable retailers



### NEWS HOT COMMODITY IN BRANDED SUDS

Tide has street value. In April 2012, thieves in Flushing, Michigan attempted to steal a shopping cart full of Tide liquid detergent. Similar incidents have occurred around the country. Apparently it's used instead of cash for illicit drug deals and since it's the nation's most popular brand, there's a high black-market demand. More importantly, it doesn't have an expiration date. Some retailers are going so far as to tag bottles with electronic anti-theft trackers because they've lost thousands of dollars worth of detergent. How's that for white-collar crime!

### AGENTS/STRENGTHS DISTRIBUTION UPDATES AND ISSUES

Occasionally even permanent-press clothes get wrinkled in the dryer and we need to run the cycle again. Check our listing for agent updates and changes that may make the difference between wrinkle-free and rugose.

Agent	Effective date	Affected protocols	Actions
IMC-A 12 (cixutumumab) (NSC 742460)	07/30/12	All using IMC-A12	Protocol amended to add new vial strength, 15 mg/mL (750 mg)
Lenalidomide (CC-5013) (NSC 703813)	07/01/12	BMTCTN-0702	Agent no longer being distributed by PMB
Cediranib (AZD2171) <b>10 mg tablet</b> (NSC 732208)	Final lot expires 10/23/12	All using this strength	Protocols amended to only use 15 mg and 20 mg tablets
Cediranib (AZD2171) <b>2.5 mg tablet</b> (NSC 732208)	Final Lot expires 01/25/13	All using this strength	Protocol amended to only use 15 mg and 20 mg tablets

