

Flu Season Is Here Get Vaccinated Today

Who should get the vaccine?

EVERYONE 6 MONTHS AND OLDER

Everyone **6 MONTHS OF AGE AND OLDER** should get the flu vaccine. Seasonal flu vaccines have a very good safety track record.



PEOPLE AT HIGH RISK

It is especially **IMPORTANT TO GET THE VACCINE IF YOU, SOMEONE YOU LIVE WITH, OR SOMEONE YOU CARE FOR IS AT HIGH RISK** of complications from the flu.

- ✓ Children & Infants
- ✓ Pregnant Women
- ✓ Seniors
- ✓ People with Disabilities
- ✓ People with Health Conditions
- ✓ Travelers & People Living Abroad

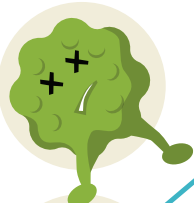
How should I get the vaccine?

There are **TWO TYPES** of vaccine, the flu shot and the nasal spray. Both protect against the same virus strains.

FLU SHOT



NASAL SPRAY



Made with **inactivated (killed) flu virus**



Made with **weakened live flu virus**



Given by **needle**



Given with a **mist sprayed in your nose**



Approved for use in **healthy people older than 6 months and people with chronic health conditions**



Approved for **healthy people between the ages of 2 and 49, except pregnant women**

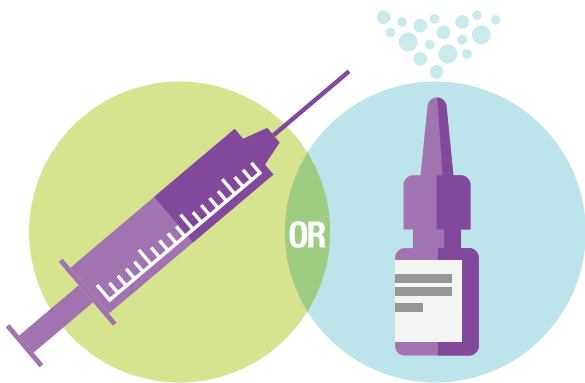
Can I get the flu from the vaccine?

NO, YOU CAN'T GET THE FLU

NO, YOU CAN'T GET THE FLU from the flu vaccine. The flu vaccine protects you from the flu, not the common cold. But you may experience some side effects.

MILD REACTIONS

MILD REACTIONS such as soreness, headaches, and fever are common side effects of the flu vaccine.



When should I get the vaccine?



Get your flu shot or spray **TODAY**. Flu season usually peaks in January or February, but it can occur as late as May. **EARLY IMMUNIZATION IS THE MOST EFFECTIVE**, but it is not too late to get the vaccine in December, January or beyond.

Where can I get the vaccine?

Visit **FLU.GOV** and use the **FLU VACCINE FINDER**.

Flu Vaccine Finder

Find flu clinics near you

Everyone six months of age and older needs a flu vaccine.

Enter Zip Code

GO

powered by **HealthMap**

VISIT FLU.GOV

SHARE THIS WIDGET

