

Department of the Navy  
Personnel Security Appeals Board (PSAB)

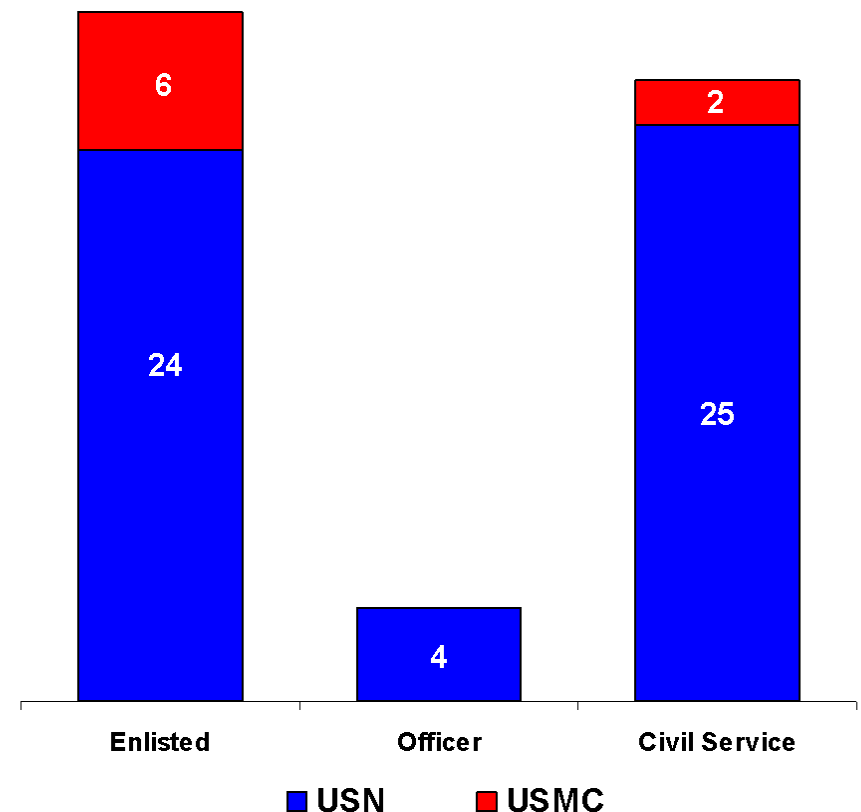
December 2010 - Activity Report

Prepared by: Ms. Benita M. Jackson  
703-693-6590

# PSAB Activities – December 2010

## Appeals Processed by Group & Service

- 62 Appeals decided in December
  - 28 Clearances granted / reinstated (45%)
  - 34 Clearances denied / revoked (55%)
- 11 Personnel appealed directly to the PSAB
  - 4 Clearances granted / reinstated (36%)
- 51 Personnel appealed personally before an administrative judge
  - 24 Clearances granted / reinstated (47%)
- Average days to process / decide an appeal – **21**
  - From date of arrival to date of decision

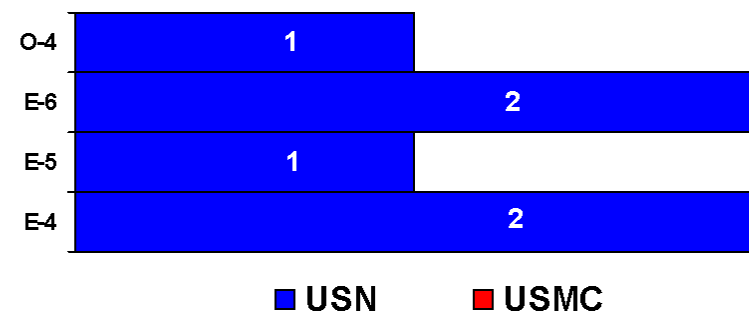


# PSAB Activities – December 2010

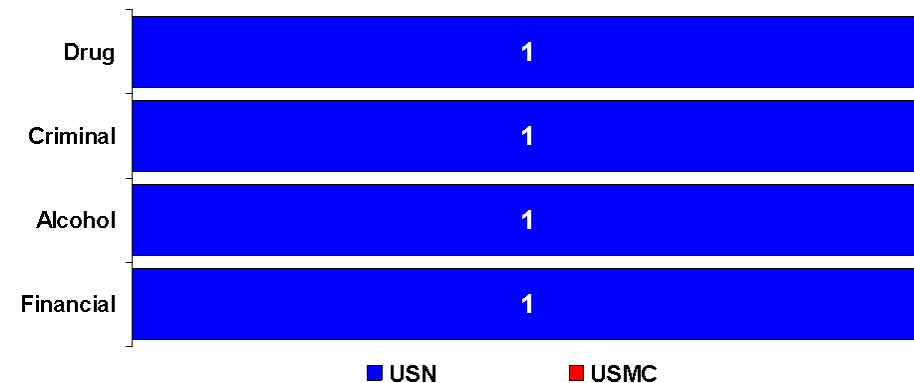
## Sensitive Compartmented Information (SCI) Related Appeals

- 6 appeals involved SCI access eligibility determinations
  - 3 appeals were granted SCI access eligibility
  - 3 appeals were denied SCI access eligibility
    - 2 denied appeals had one issue
    - 1 denied appeal had two issues

Appeals by grade / affiliation



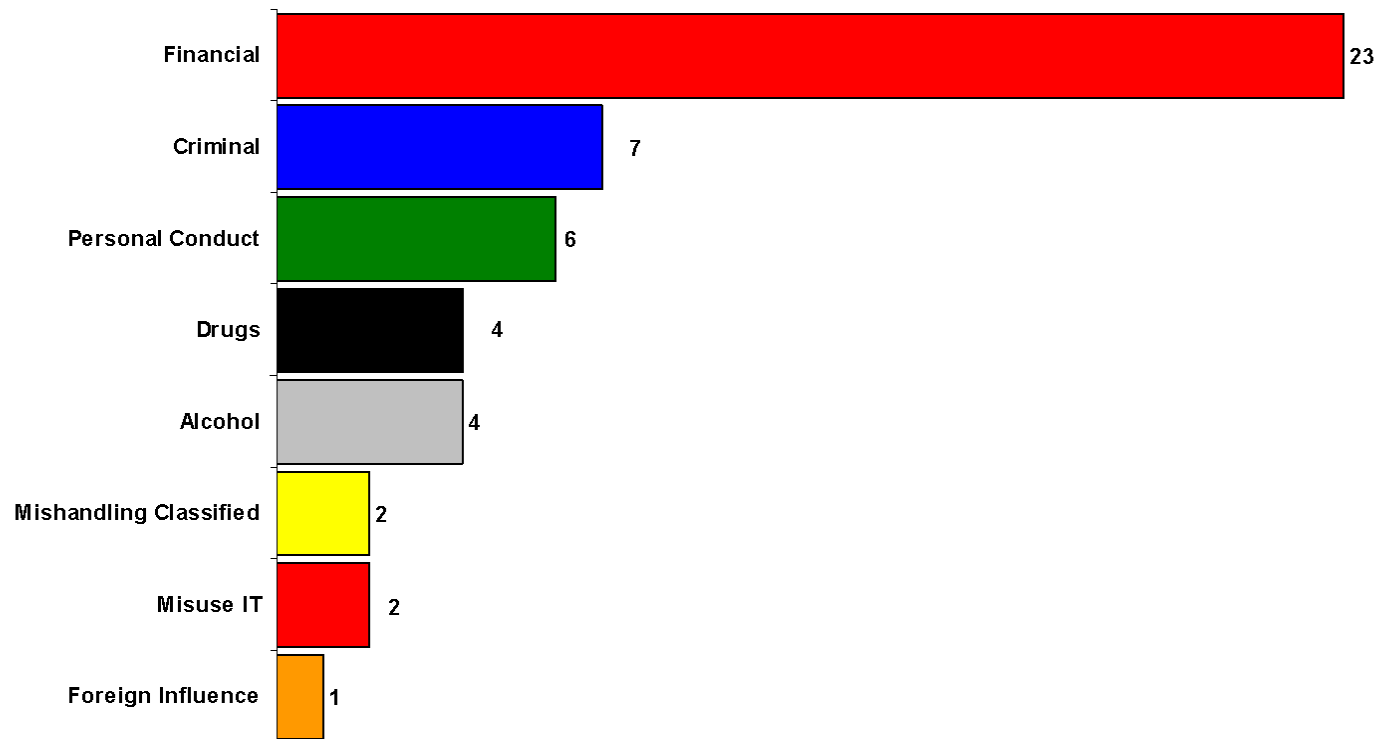
Denied appeal concerns



# PSAB Activities – December 2010

## Issues Present in Denied Appeals

- Financial concerns present in 79% of denied appeals (23 of 34)
  - 5 denied appeals had two concerns present
  - 5 denied appeals had three concerns present



# PSAB Activities – December 2010

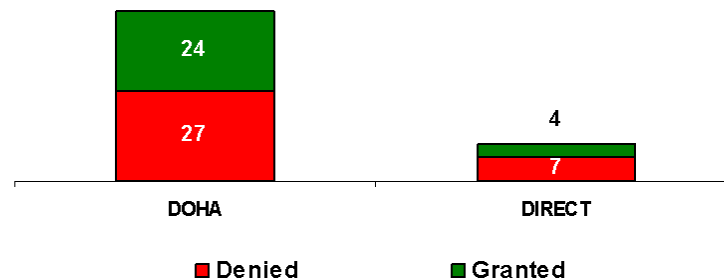
## DOHA vs. Direct Appeals – Processing Time & Results

- Security clearance eligibility was granted / reinstated in 45% of the appeals decided (28)

↓ PSAB processed appeals in an average of 21 days

Calculated from PSAB arrival to PSAB decision date

- Type of appeal submitted impacts total processing – Direct vs. DOHA
  - Direct appeals took an average of 105 days to process
  - DOHA appeals took an average of 180 days to process
    - Calculated from date of letter of notification to date of PSAB decision



# Department of the Navy

## Personnel Security Appeals Board

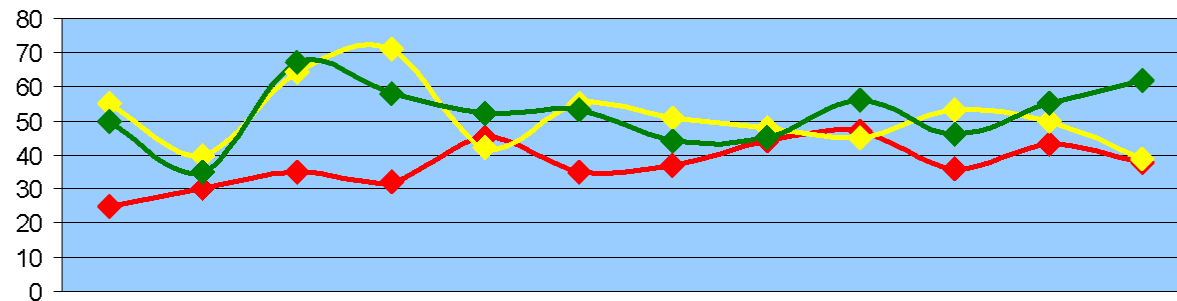
### CY 2010 Workload

Average of 21 days to process and decide each appeal

2190 days authorized by DoD to process and decide appeals – 6 man-years

1324 days actually used – 40% ahead of DoD timeline 2.3 man-years saved

Calculated from case arrival at PSAB to PSAB decision



	Jan	Feb	Mar	Apr	May	Jun	Jul	Aug	Sep	Oct	Nov	Dec
Beginning Case Load	25	30	35	32	45	35	37	44	47	36	43	38
New Cases Received	55	40	64	71	42	55	51	48	45	53	50	39
Decisions Made	50	35	67	58	52	53	44	45	56	46	55	62
Ending Case Load	30	35	32	45	35	37	44	47	36	43	38	15
Average Days to Decision	18	23	23	24	24	22	25	26	27	24	24	21