

Department of the Navy

Personnel Security Appeals Board (PSAB)

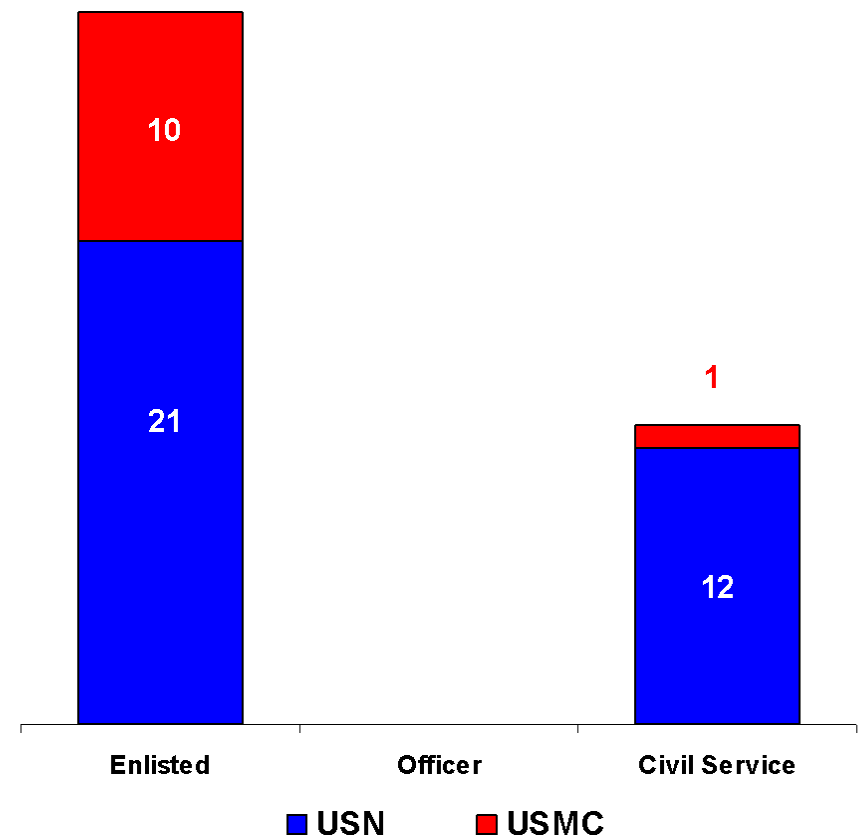
July 2010 - Activity Report

Prepared by: Ms. Benita M. Jackson
703-693-6590

PSAB Activities – July 2010

Appeals Processed by Group & Service

- 44 Appeals decided in July
 - 25 Clearances granted / reinstated (57%)
 - 19 Clearances denied / revoked (43%)
- 13 Personnel appealed directly to the PSAB
 - 5 Clearances granted / reinstated (38%)
- 31 Personnel appealed personally before an administrative judge
 - 20 Clearances granted / reinstated (65%)
- Average days to process / decide an appeal – **25**
 - From date of arrival to date of decision

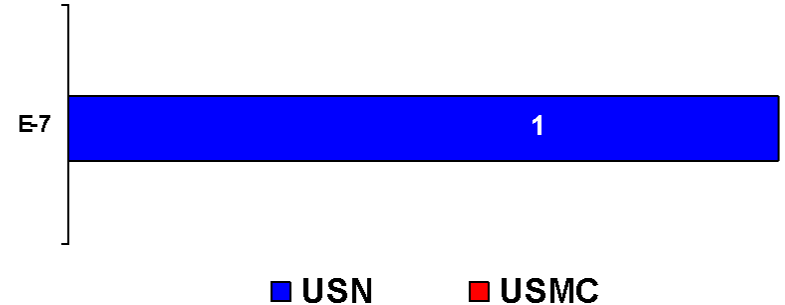


PSAB Activities – July 2010

Sensitive Compartmented Information (SCI) Related Appeals

- 1 appeal involved SCI access eligibility determinations
1 appeal was granted SCI access eligibility

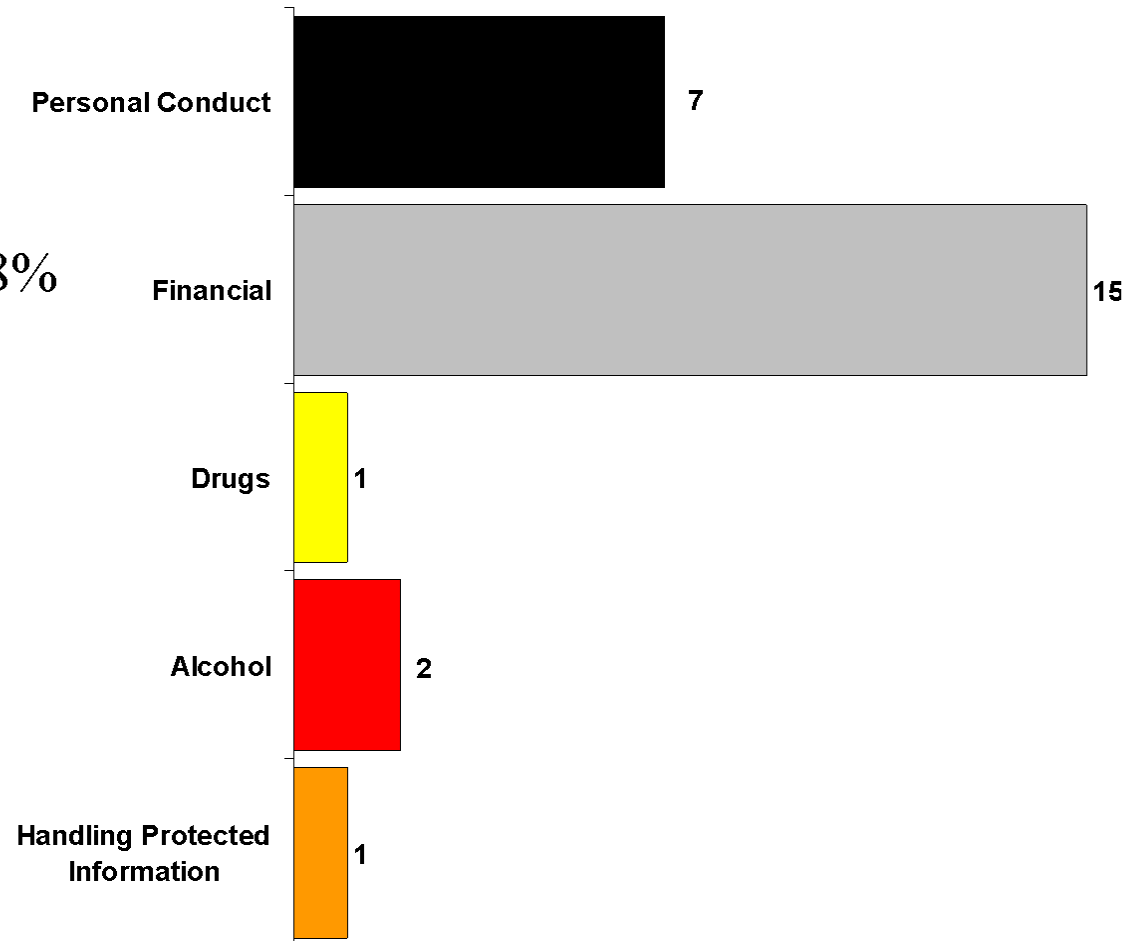
Appeals by grade / affiliation



PSAB Activities – July 2010

Issues Present in Denied Appeals

- Financial concerns present in 58% of denied appeals (15 of 26)
 - 5 denied appeals had two concerns present
 - 1 denied appeal had three concerns present



PSAB Activities – July 2010

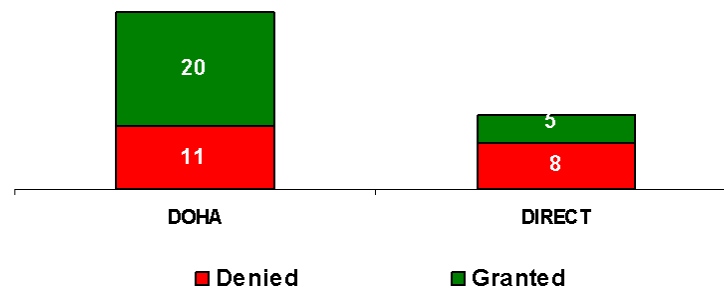
DOHA vs. Direct Appeals – Processing Time & Results

- Security clearance eligibility was granted / reinstated in 57% of the appeals decided (25)

↓ PSAB processed appeals in an average of 25 days

Calculated from PSAB arrival to PSAB decision date

- Type of appeal submitted impacts total processing – Direct vs. DOHA
 - Direct appeals took an average of 90 days to process
 - DOHA appeals took an average of 186 days to process
 - Calculated from date of letter of notification to date of PSAB decision

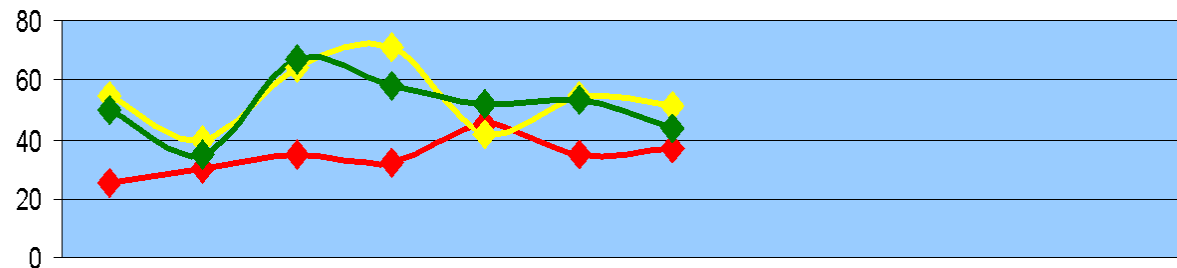


Department of the Navy

Personnel Security Appeals Board

CY 2010 Workload

- Average of 25 days to process and decide each appeal
- 1653 days authorized by DoD to process and decide appeals – 4.5 man-years
 - 1099 days actually used – 34% ahead of DoD timeline – 1.5 man-years saved
 - Calculated from case arrival at PSAB to PSAB decision



	Jan	Feb	Mar	Apr	May	Jun	Jul	Aug	Sep	Oct	Nov	Dec	Total
Beginning Case Load	25	30	35	32	45	35	37						25
New Cases Received	55	40	64	71	42	55	51						378
Decisions Made	50	35	67	58	52	53	44						359
Ending Case Load	30	35	32	45	35	37	44	0	0	0	0	0	44
Average Days to Decision	18	23	23	24	24	22	25						14