

Department of the Navy
Personnel Security Appeals Board (PSAB)

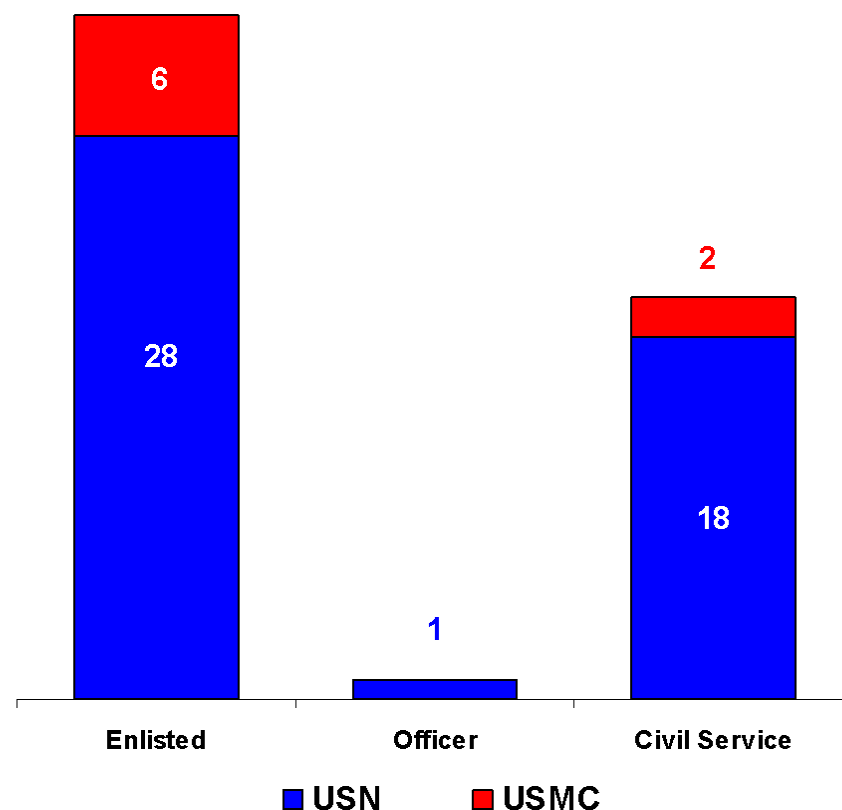
November 2010 - Activity Report

Prepared by: Ms. Benita M. Jackson
703-693-6590

PSAB Activities – November 2010

Appeals Processed by Group & Service

- 55 Appeals decided in November
 - 35 Clearances granted / reinstated (64%)
 - 20 Clearances denied / revoked (36%)
- 19 Personnel appealed directly to the PSAB
 - 14 Clearances granted / reinstated (74%)
- 36 Personnel appealed personally before an administrative judge
 - 21 Clearances granted / reinstated (58%)
- Average days to process / decide an appeal – **24**
 - From date of arrival to date of decision

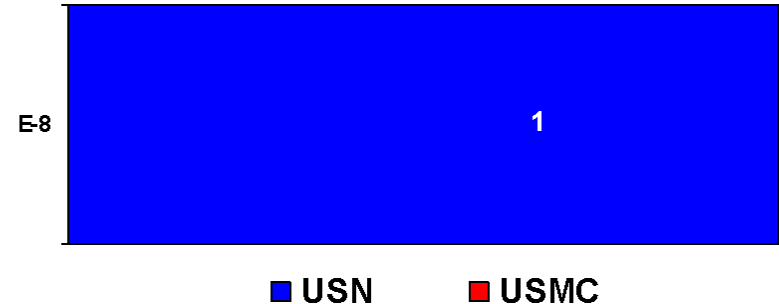


PSAB Activities – November 2010

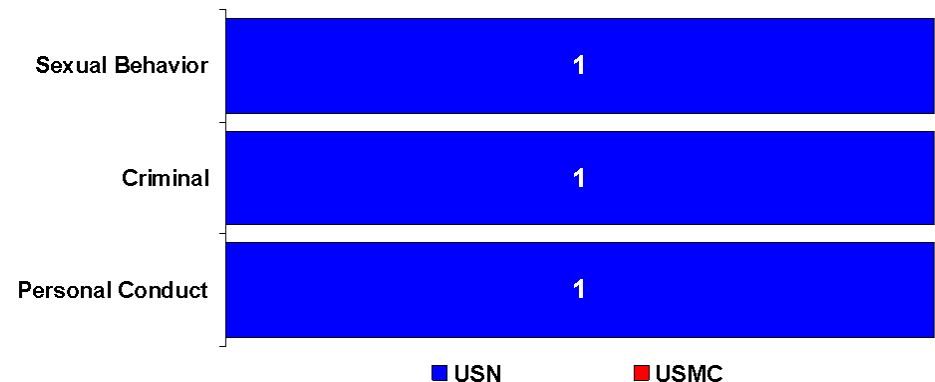
Sensitive Compartmented Information (SCI) Related Appeals

- 4 appeals involved SCI access eligibility determinations
 - 3 appeals were granted SCI access eligibility
 - 1 appeal was denied SCI access eligibility
 - 1 denied appeal had three issues

Appeals by grade / affiliation



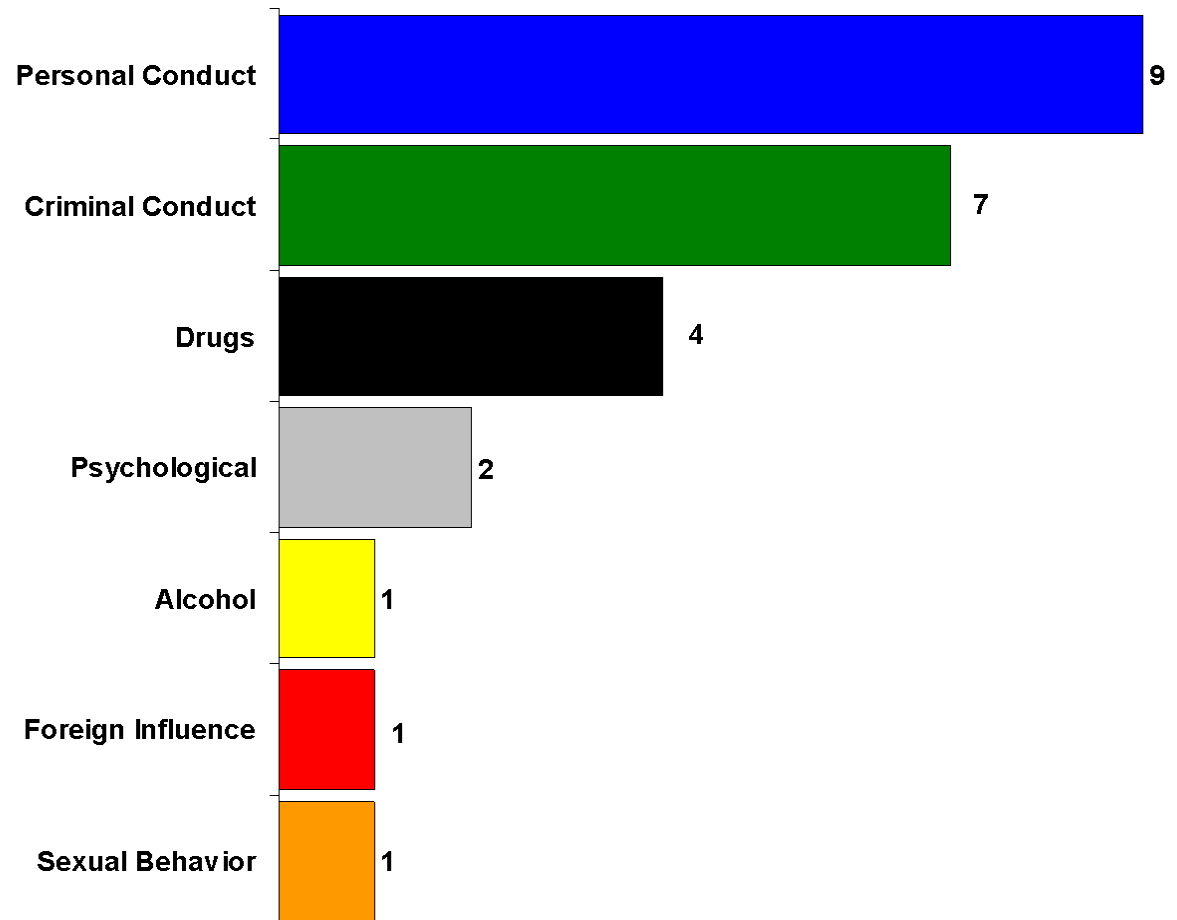
Denied appeal concerns



PSAB Activities – November 2010

Issues Present in Denied Appeals

- Financial concerns present in 60% of denied appeals (12 of 20)
 - 1 denied appeal had two concerns present
 - 6 denied appeals had three concerns present
 - 1 denied appeal had five concerns present



PSAB Activities – November 2010

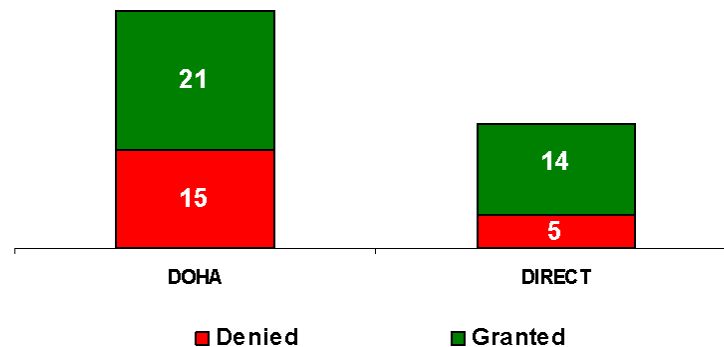
DOHA vs. Direct Appeals – Processing Time & Results

- Security clearance eligibility was granted / reinstated in 64% of the appeals decided (35)

↓ PSAB processed appeals in an average of 24 days

Calculated from PSAB arrival to PSAB decision date

- Type of appeal submitted impacts total processing – Direct vs. DOHA
 - Direct appeals took an average of 87 days to process
 - DOHA appeals took an average of 194 days to process
 - Calculated from date of letter of notification to date of PSAB decision



Department of the Navy

Personnel Security Appeals Board

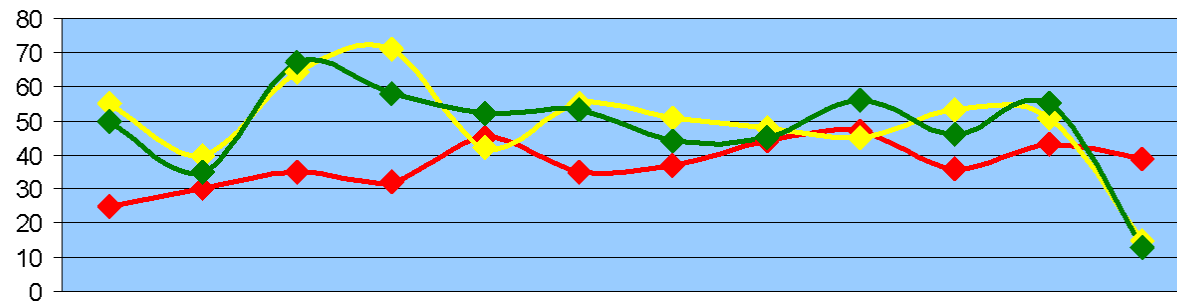
CY 2010 Workload

Average of 24 days to process and decide each appeal

2220 days authorized by DoD to process and decide appeals – 6 man-years

1339 days actually used – 40% ahead of DoD timeline 2.4 man-years saved

Calculated from case arrival at PSAB to PSAB decision



	Jan	Feb	Mar	Apr	May	Jun	Jul	Aug	Sep	Oct	Nov	Dec	Total
Beginning Case Load	25	30	35	32	45	35	37	44	47	36	43	39	25
New Cases Received	55	40	64	71	42	55	51	48	45	53	51	15	590
Decisions Made	50	35	67	58	52	53	44	45	56	46	55	13	574
Ending Case Load	30	35	32	45	35	37	44	47	36	43	39	41	41
Average Days to Decision	18	23	23	24	24	22	25	26	27	24	24		24