

Department of the Navy
Personnel Security Appeals Board (PSAB)

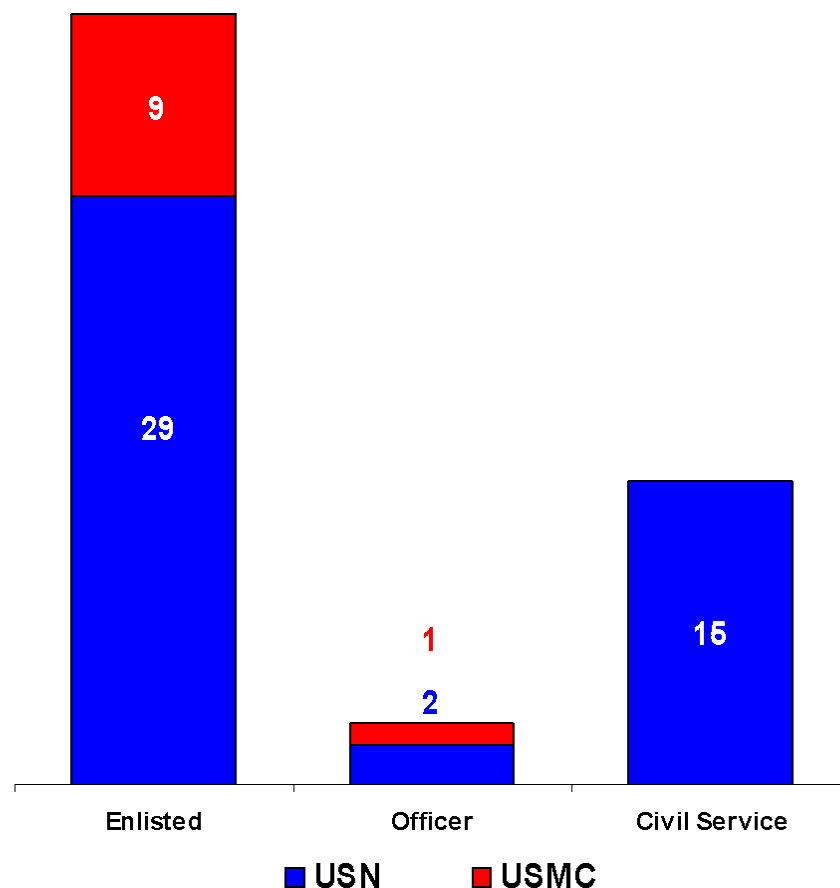
September 2010 - Activity Report

Prepared by: Ms. Benita M. Jackson
703-693-6590

PSAB Activities – September 2010

Appeals Processed by Group & Service

- 56 Appeals decided in September
 - 25 Clearances granted / reinstated (45%)
 - 31 Clearances denied / revoked (55%)
- 10 Personnel appealed directly to the PSAB
 - 4 Clearances granted / reinstated (40%)
- 46 Personnel appealed personally before an administrative judge
 - 21 Clearances granted / reinstated (46%)
- Average days to process / decide an appeal – 27
 - From date of arrival to date of decision

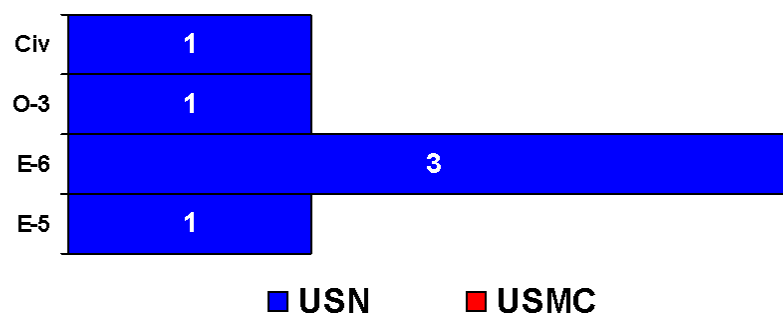


PSAB Activities – September 2010

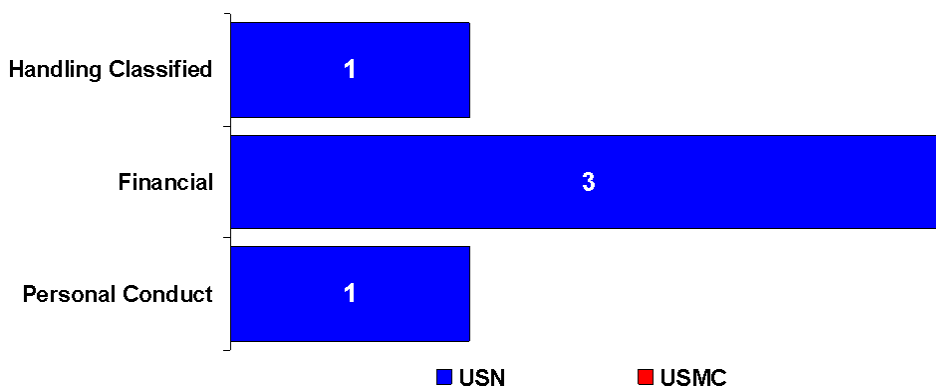
Sensitive Compartmented Information (SCI) Related Appeals

- 6 appeals involved SCI access eligibility determinations
 - one appeal was granted SCI access eligibility
 - 5 appeals were denied SCI access eligibility
 - All denied appeals had one issue

Appeals by grade / affiliation



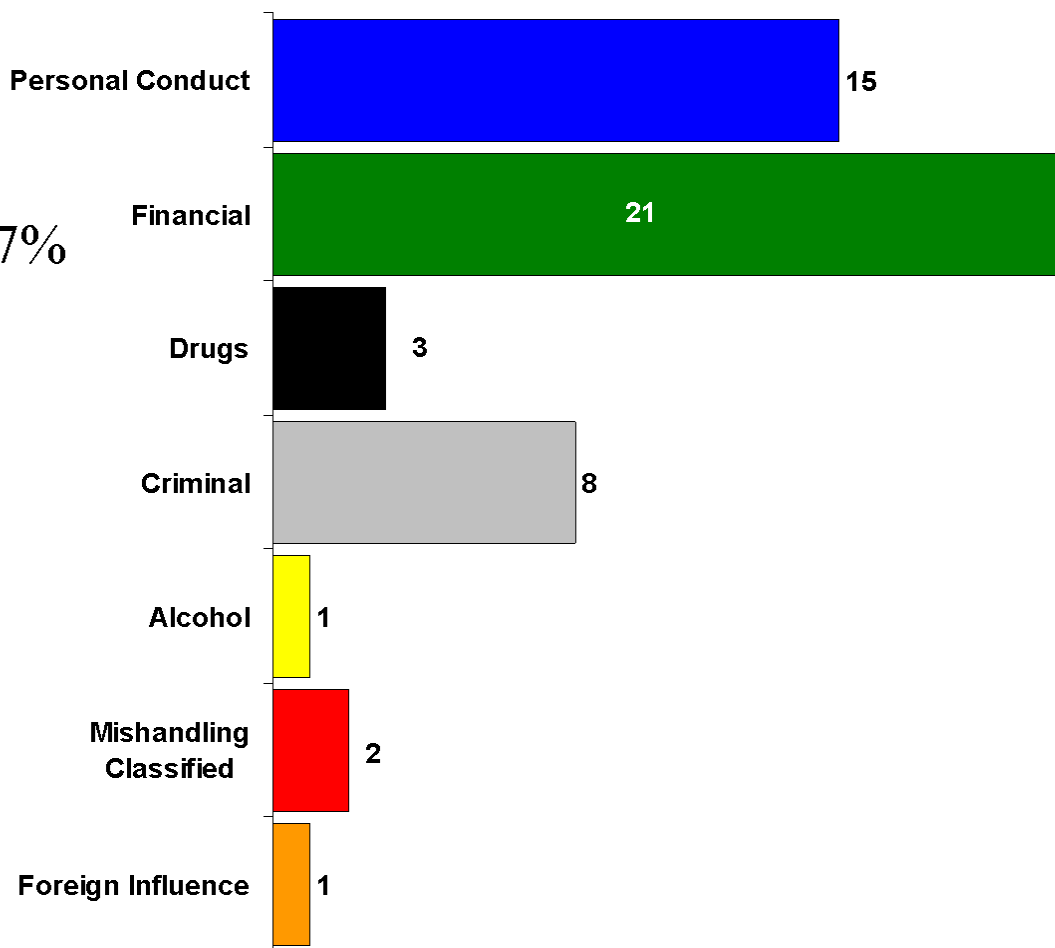
Denied appeal concerns



PSAB Activities – September 2010

Issues Present in Denied Appeals

- Financial concerns present in 67% of denied appeals (21 of 31)
 - 12 denied appeals had two concerns present
 - 3 denied appeals had three concerns present
 - 1 denied appeal had four concerns present



PSAB Activities – September 2010

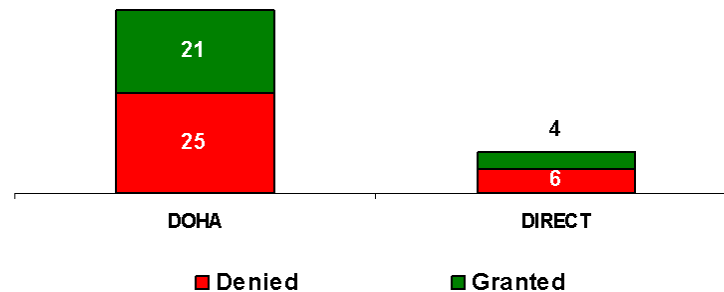
DOHA vs. Direct Appeals – Processing Time & Results

- Security clearance eligibility was granted / reinstated in 45% of the appeals decided (25)

↓ PSAB processed appeals in an average of 27 days

Calculated from PSAB arrival to PSAB decision date

- Type of appeal submitted impacts total processing – Direct vs. DOHA
 - Direct appeals took an average of 102 days to process
 - DOHA appeals took an average of 185 days to process
 - Calculated from date of letter of notification to date of PSAB decision



Department of the Navy

Personnel Security Appeals Board

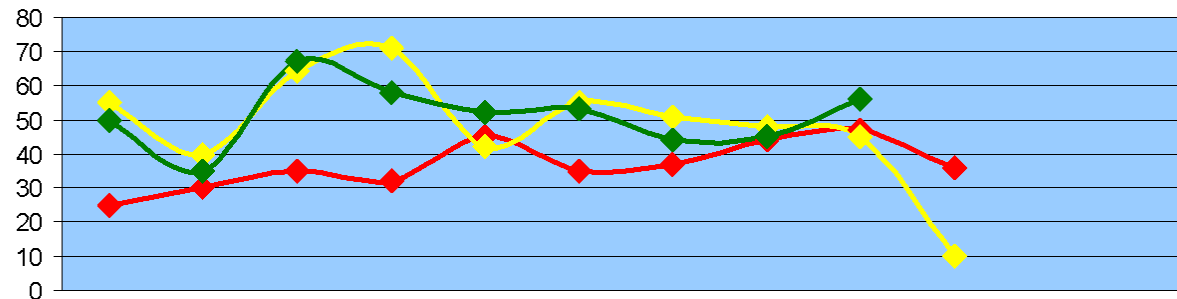
CY 2010 Workload

Average of 27 days to process and decide each appeal

1980 days authorized by DoD to process and decide appeals – 5.4 man-years

1523 days actually used – 23% ahead of DoD timeline 1.3 man-years saved

Calculated from case arrival at PSAB to PSAB decision



	Jan	Feb	Mar	Apr	May	Jun	Jul	Aug	Sep	Oct	Nov	Dec	Total
Beginning Case Load	25	30	35	32	45	35	37	44	47	36			25
New Cases Received	55	40	64	71	42	55	51	48	45	10			481
Decisions Made	50	35	67	58	52	53	44	45	56				460
Ending Case Load	30	35	32	45	35	37	44	47	36	46	0	0	46
Average Days to Decision	18	23	23	24	24	22	25	26	27				19