

Department of the Navy
Personnel Security Appeals Board (PSAB)
CY 2009 Activity Report

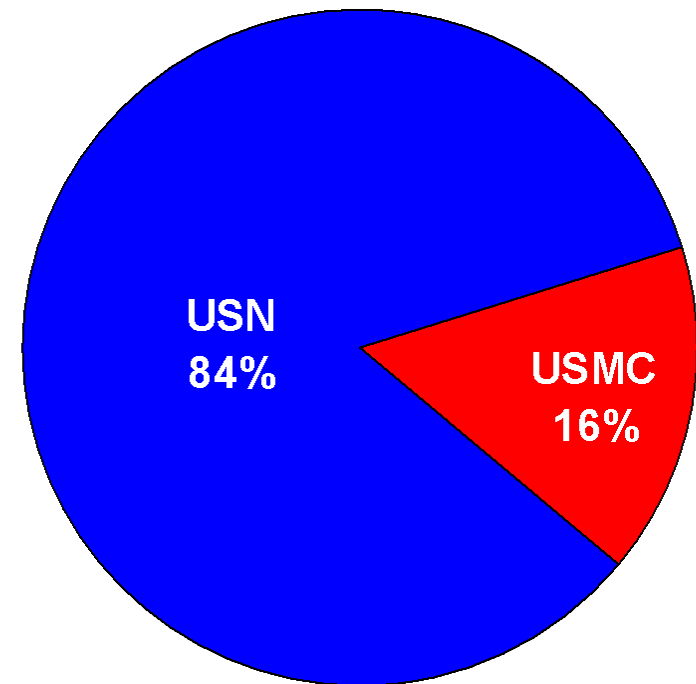
Prepared by
Ms. Benita M. Jackson
President, DON PSAB

Department of the Navy

Personal Security Appeals by Component

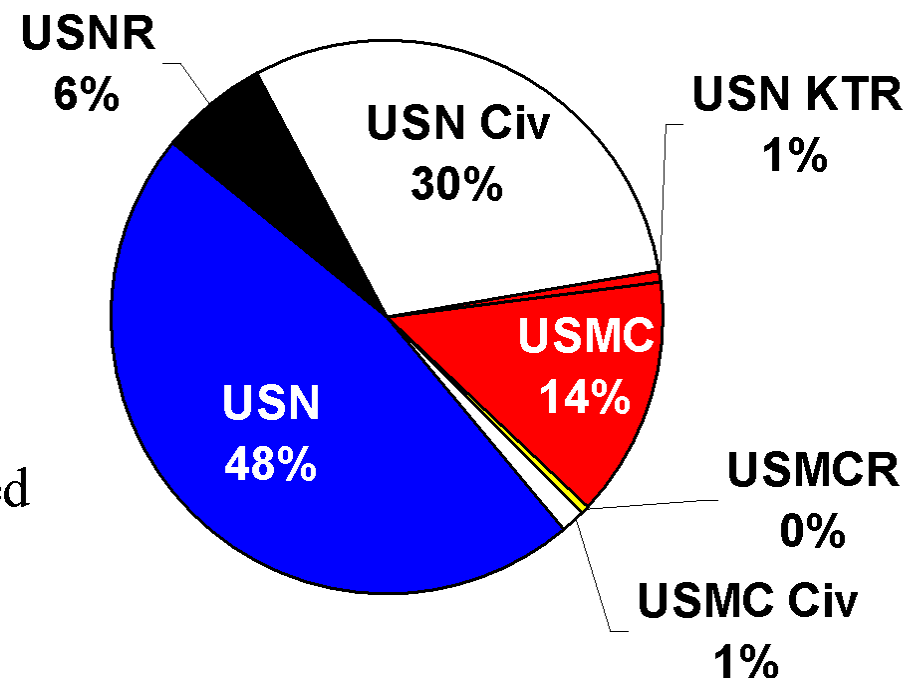
CY 2009

- 688 Appeals decided by the Personnel Security Appeals Board (PSAB)
 - 494 Appealed personally before a DOHA Administrative Judge
 - 252 Clearances granted / reinstated
 - 194 Appealed directly to the PSAB
 - 86 Clearances granted / reinstated
- 49 Percent of clearances were granted / reinstated (338)



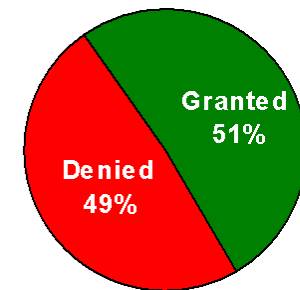
Department of the Navy Personnel Security Appeals CY 2009

- 688 Appeals decided
- 580 Navy personnel appealed
 - 23 Officers
 - 1 Warrant Officers
 - 342 Enlisted
 - 207 Civilians
 - 7 Contractor (KTR)
- 108 Marine Corps personnel appealed
 - 13 Officers
 - 2 Warrant Officers
 - 83 Enlisted
 - 10 Civilians

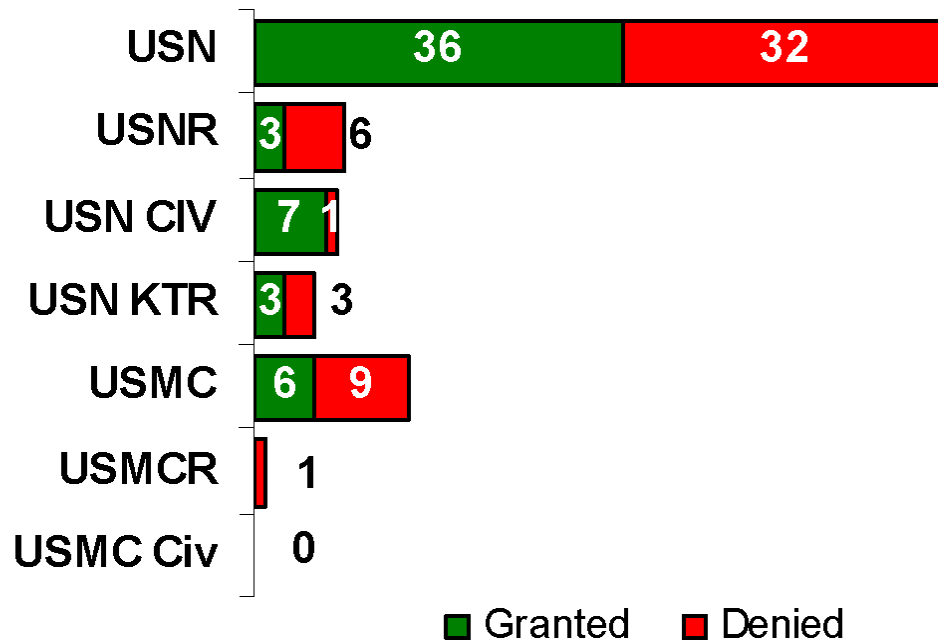


Department of the Navy Sensitive Compartmented Information (SCI) Clearance Appeals - CY 2009

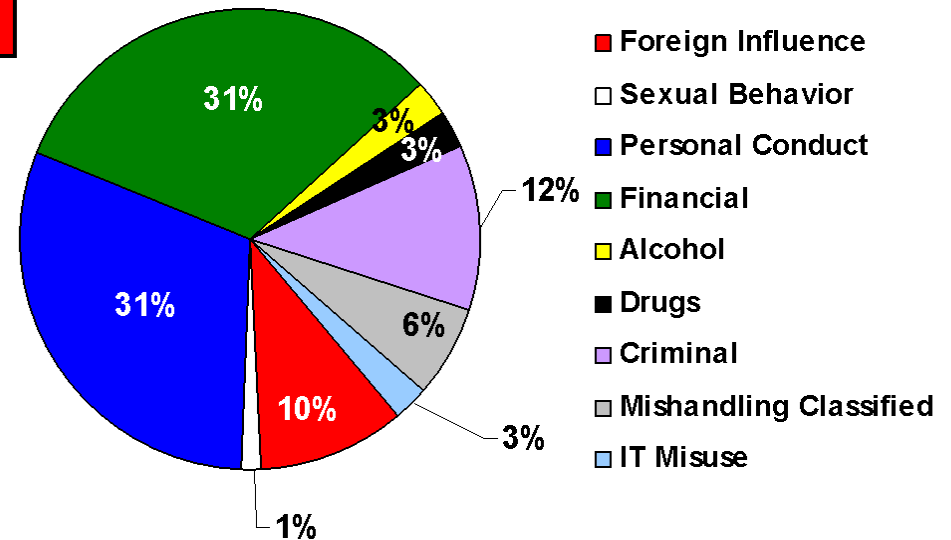
- 107 Appeals involved SCI access eligibility determinations
 - 55 SCI access eligibilities were granted / reinstated
 - 52 SCI access eligibilities were denied / revoked



Appeal Distribution by Affiliation

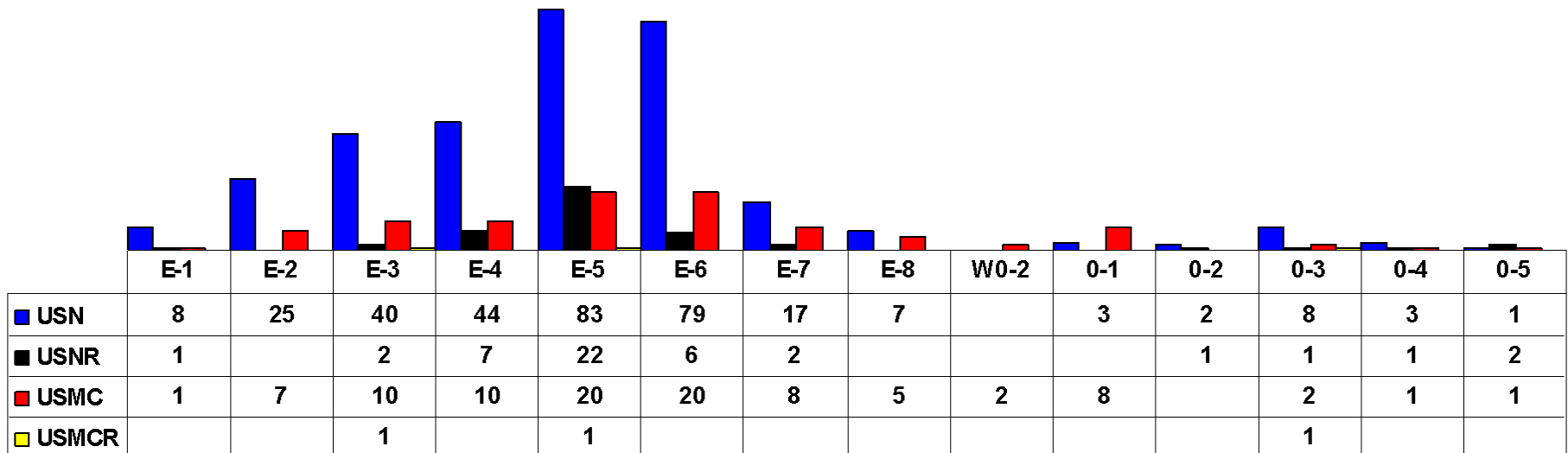


Issues Present in Denied Appeals



Department of the Navy Military Appeals by Pay Grade CY 2009

- Military members submitted 464 of the 688 appeals (67%)
 - Navy and Marine Corps active duty & reserve personnel
- 80% of military appeals were in the E-3 to E-7 pay grades (372)

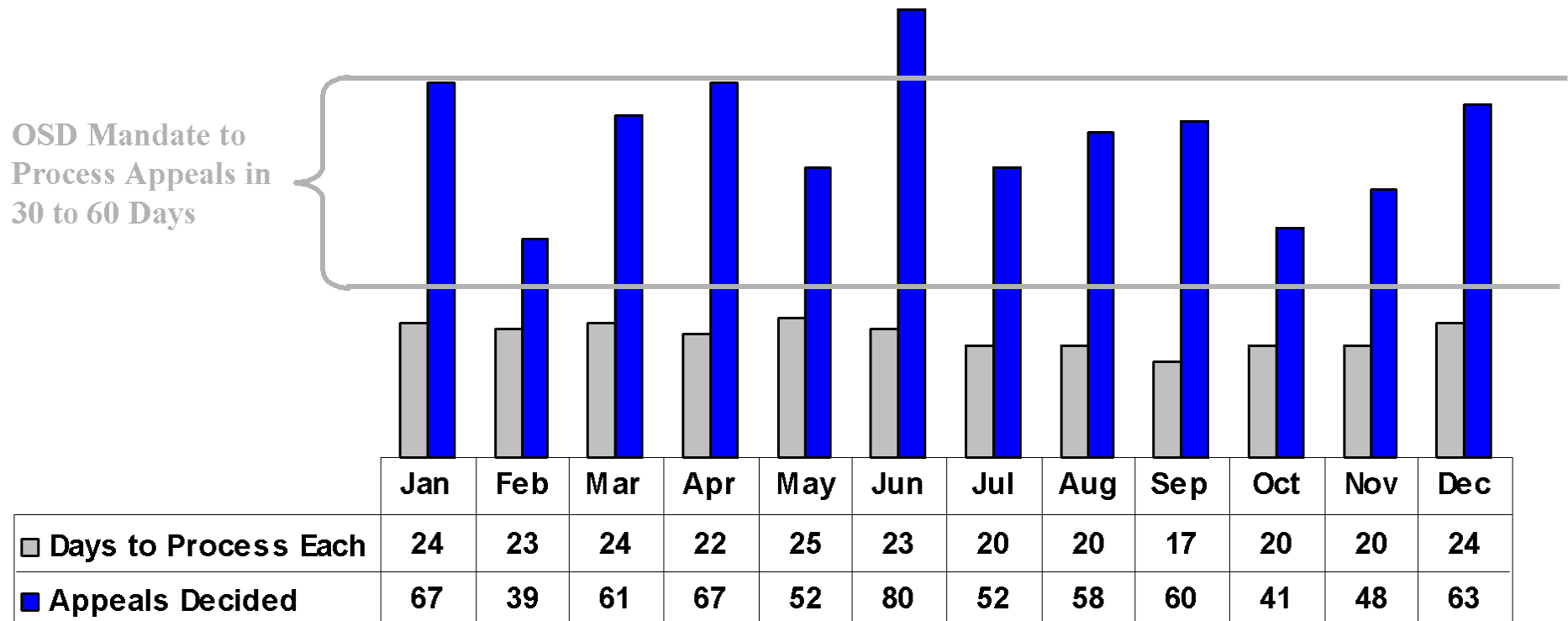


Department of the Navy

Average Days to Process / Decide an Appeal

CY 2009

- Average of 22 days to process and decide each appeal
 - 26,488 days authorized by DOD to process and decide appeals - 73 man-years
 - 14,901 days actually used - 44% ahead of DOD timeline - 32 man-years saved
 - Calculated from case arrival at PSAB to PSAB decision

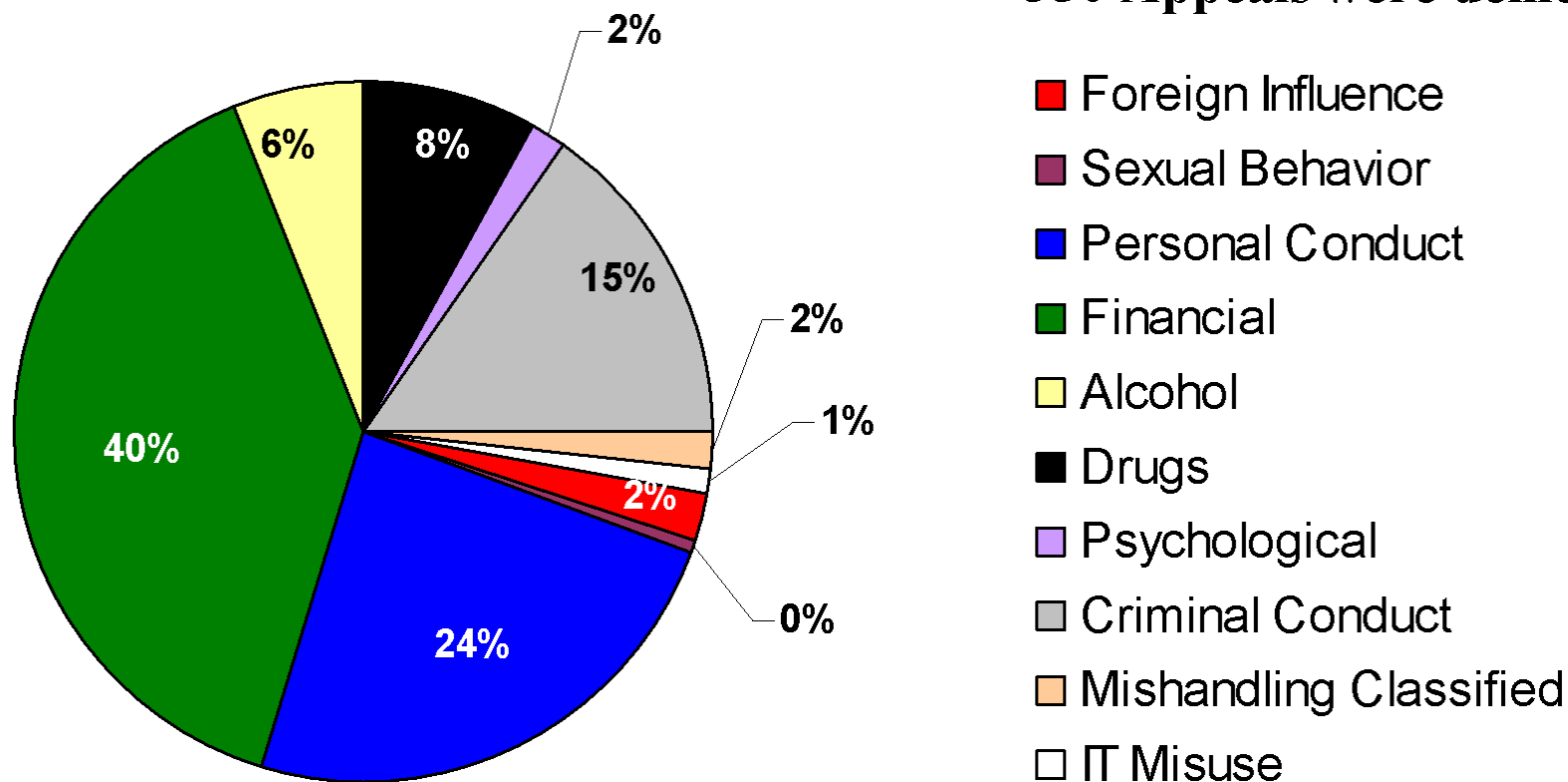


Department of the Navy

Issues Present in Denied Appeals

CY 2009

350 Appeals were denied

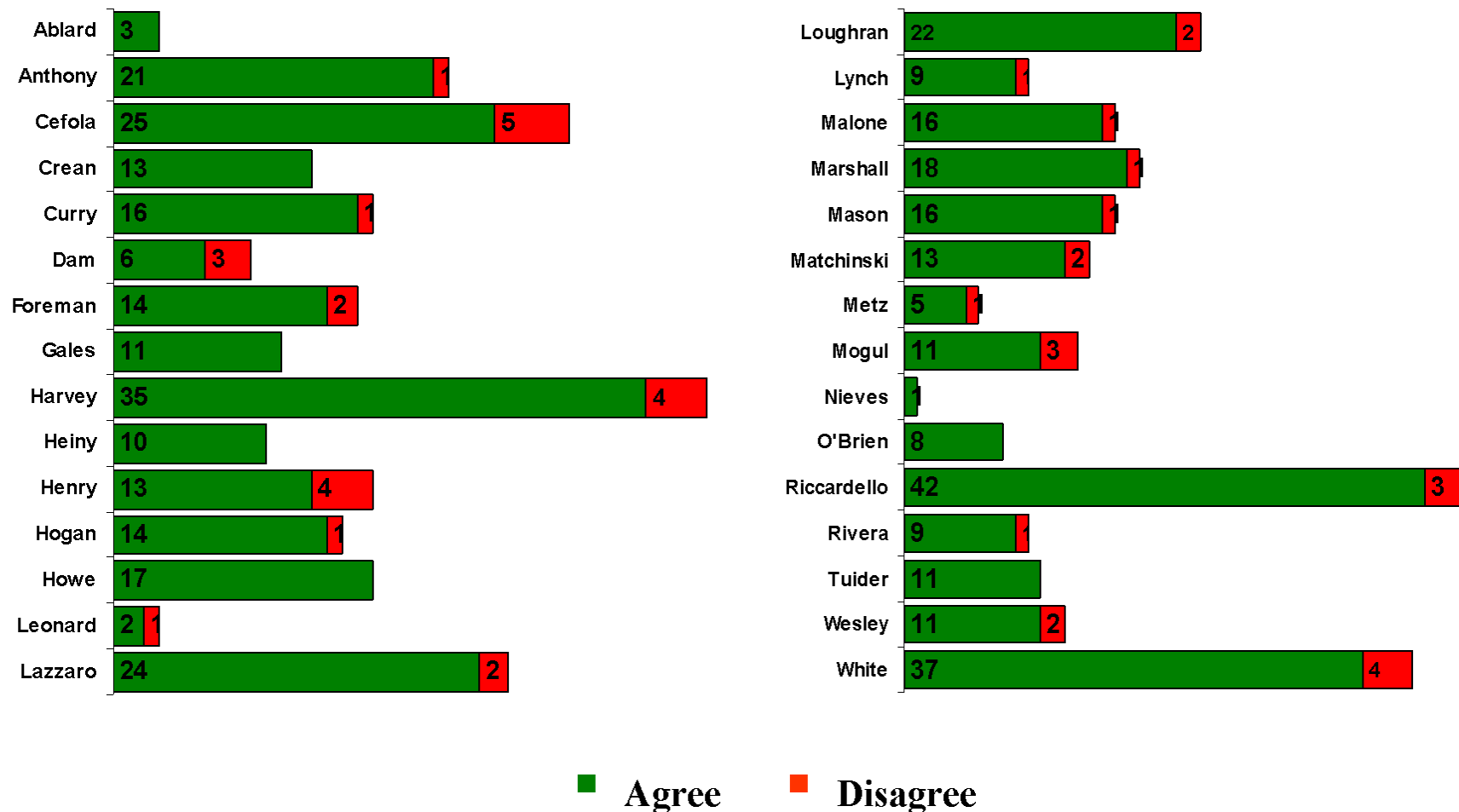


DON PSAB Activities

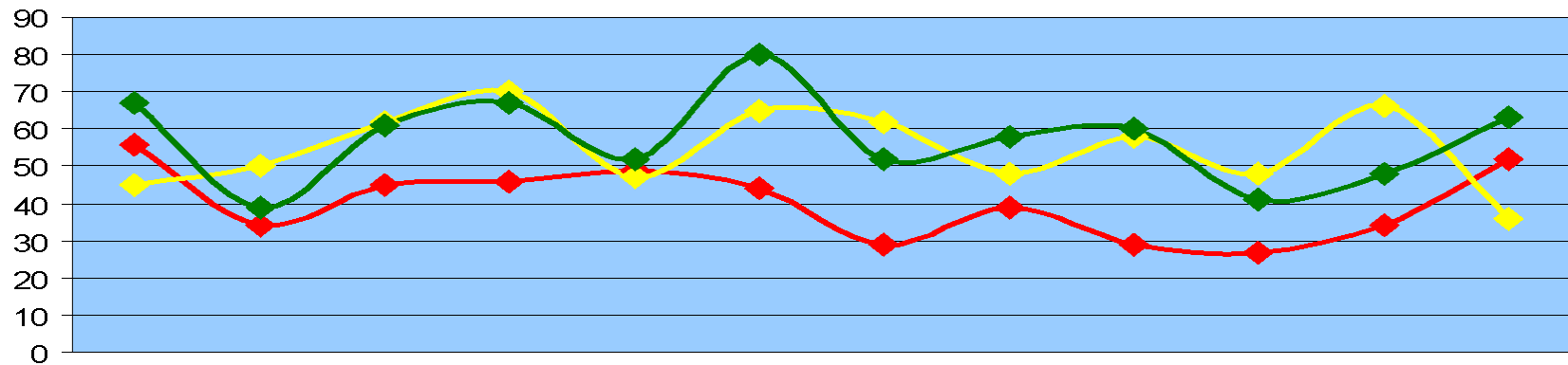
CY 2009

The Defense Office of Hearings and Appeals (DOHA) - Feedback

- The DON PSAB agreed with the Administrative Judge's 91% of the time.



Department of the Navy Personnel Security Appeals Board CY 2009 Workload



	Jan	Feb	Mar	Apr	May	Jun	Jul	Aug	Sep	Oct	Nov	Dec	Total
Beginning Case Load	56	34	45	46	49	44	29	39	29	27	34	52	56
New Cases Received	45	50	62	70	47	65	62	48	58	48	66	36	657
Decisions Made	67	39	61	67	52	80	52	58	60	41	48	63	688
Ending Case Load	34	45	46	49	44	29	39	29	27	34	52	25	25
Average Days to Decision	24	23	24	25	23	21	20	20	17	20	20	24	22