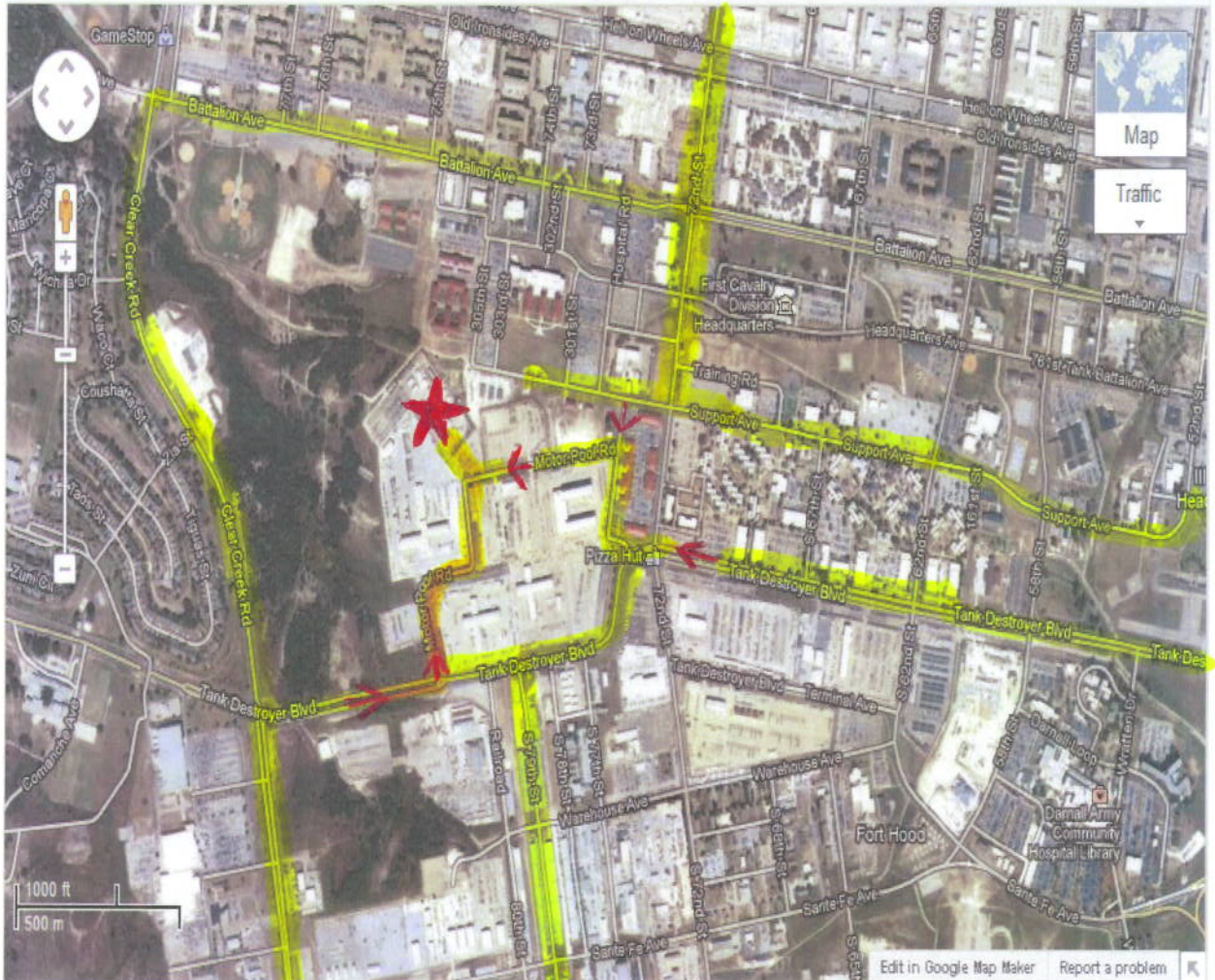


Fort Hood Education Center Mobile Trailer Classroom Location



Directions from Ill Corps Headquarter to TAMU-CT Nursing Center

1. From Ill Corps Headquarters, Building #1001 Head south on 52nd St toward Support Ave
Restricted usage road
2. Continue onto Support Ave
Restricted usage road
3. Turn left onto 58th St
Restricted usage road
4. Take the 1st right onto Tank Destroyer Blvd
Partial restricted usage road
5. Turn left onto Clear Creek Rd
Partial restricted usage
6. Turn right onto University Dr and continue to building 155 TAMU-CT Nursing Center



FROM POINTS EAST including Belton, Temple, and Cameron.

From Interstate-35, **EXIT onto West Highway 190** (also called Central Texas Expressway). **EXIT at Clear Creek Road**, one exit past the Fort Hood main gate. Cross over the highway, and turn *right* at the first stoplight on University Drive. Building 155 TAMU-CT Nursing Center is the second building on the left side of the road.

FROM POINTS WEST including Highway 190, Copperas Cove, and Lampasas

From Lampasas, **travel east on Highway 190**, through the town of Copperas Cove. Approximately six miles past Cove take the exit for Clear Creek South. Turn right at the stop light for Clear Creek. Continue to the first stop light and turn right on to university drive. Building 155 TAMU-CT Nursing Center is the second building on the left side of the road.

FROM POINTS SOUTH including Highway 195, Florence, and Georgetown

Highway 195, which may be accessed from I-35 just north of Georgetown, is a shorter and more pleasant alternative to the busy interstate highway. **Travel north on Highway 195** through the small town of Florence.

EXIT at Stan Schlueter Loop (Highway 3470) just as you enter the Killeen city limits, about 17 miles north of Florence .

TURN LEFT on Stan Schlueter Loop , heading west.

TURN RIGHT at Clear Creek Road (Hwy 201), heading north. Past Shoemaker High School to your right, and just after the Metroplex Hospital on your left turn left on to university drive. Building 155 TAMU-CT Nursing Center is the second building on the left side of the road.