

National Severe Weather Workshop



Improving Services for Communities at Risk

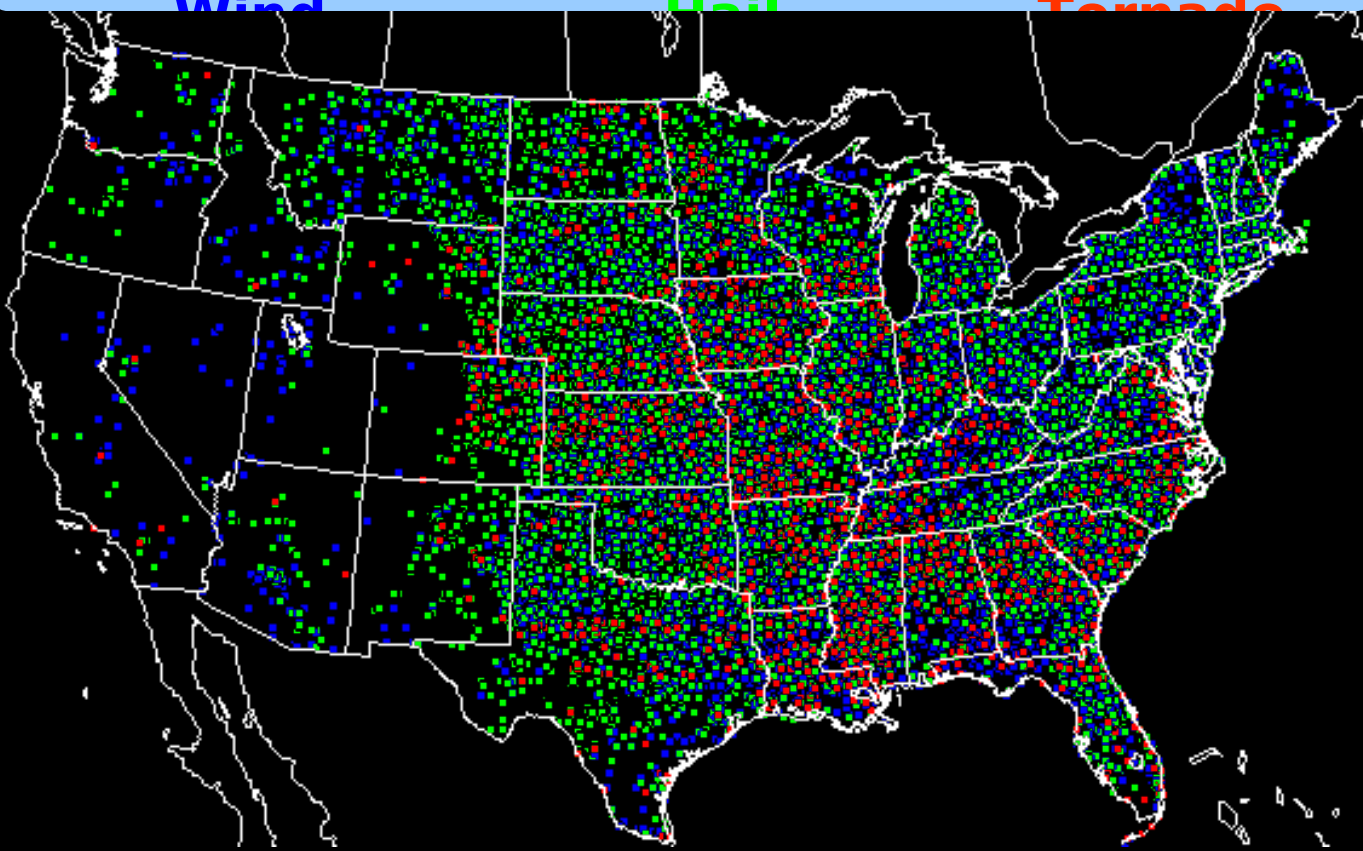
Lynn Maximuk

Director, National Weather Service, Central Region

**Norman, OK
March 5, 2009**

2008 Severe Weather Reports

- Damaging Wind
- Hail
- Tornado

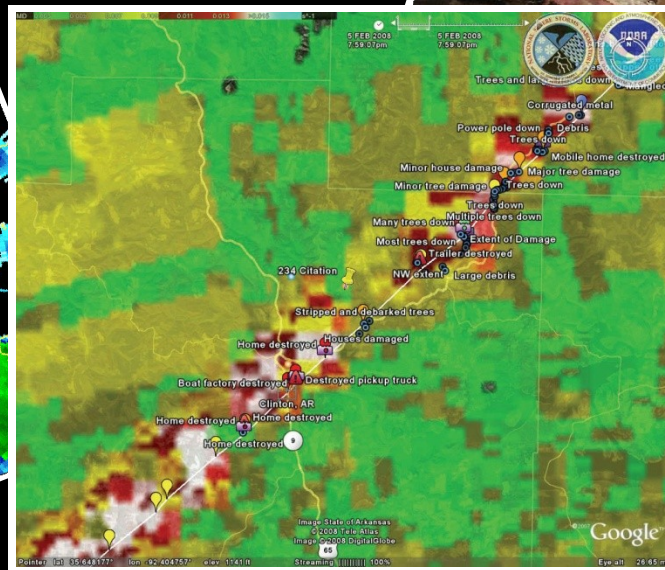
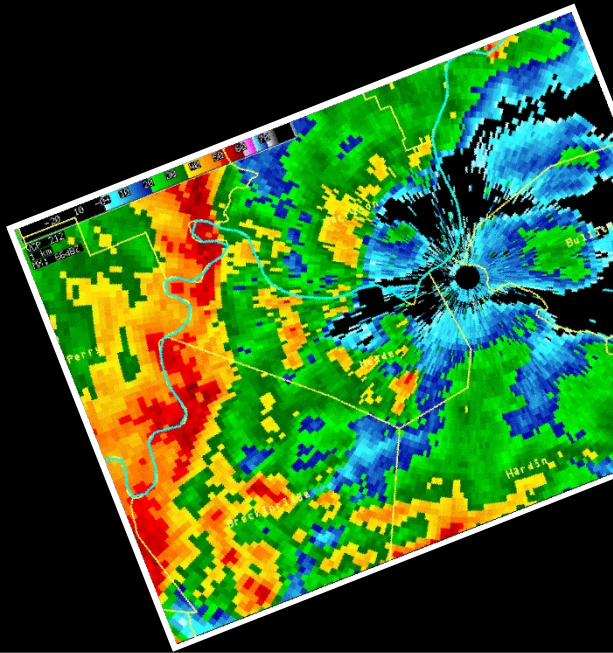


Severe Weather in 2008

February 5-6

Super Tuesday Outbreak

- 87 tornadoes
- 57 fatalities
- 17 minute average lead time
- Outlook 6 days in advance



Super Tuesday Outbreak

Service Assessment Team

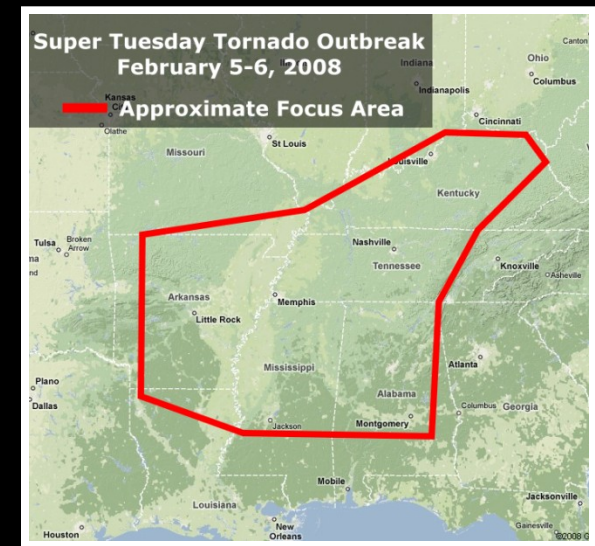
Key Findings and Recommendations

Key Findings:

- 63% of victims in mobile homes
- 60% did not have access to safe shelter
- Most fatalities occurred at night

Recommendations:

- Improve wording and call-to-action statements
- Increase emphasis on social science

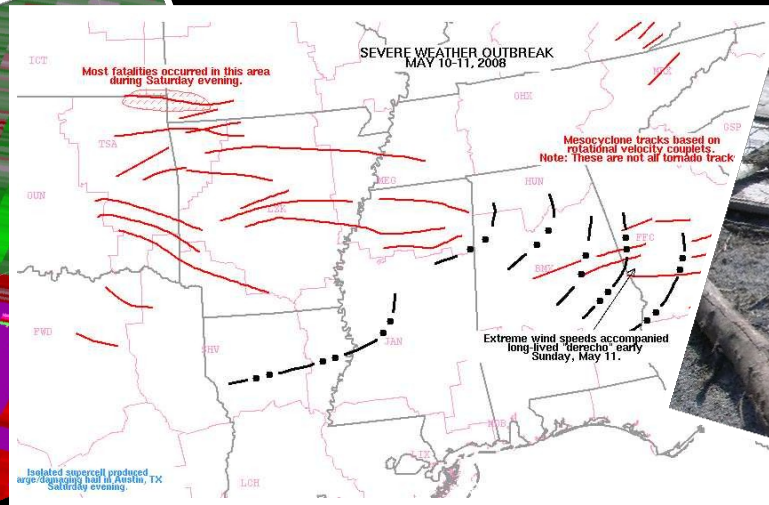
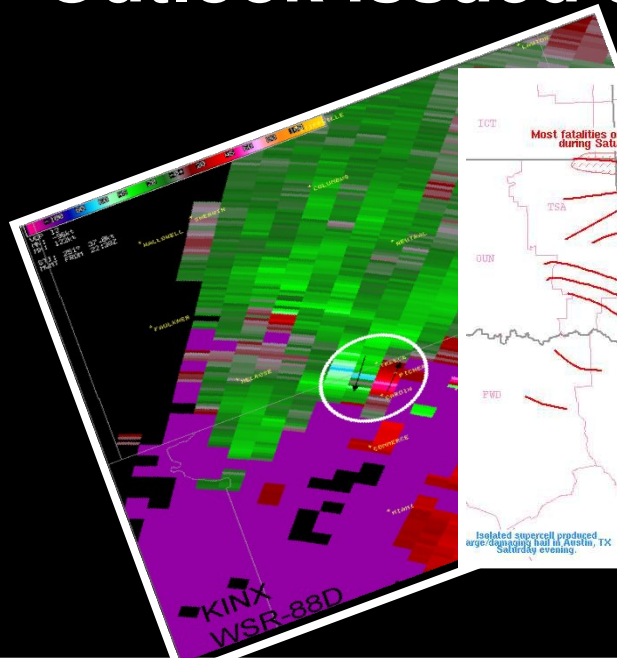


Severe Weather in 2008

May 10-11

Mother's Day Outbreak

- More than 50 tornadoes
- 24 fatalities
- 20 min. average lead time
- Outlook issued 3-4 days in advance



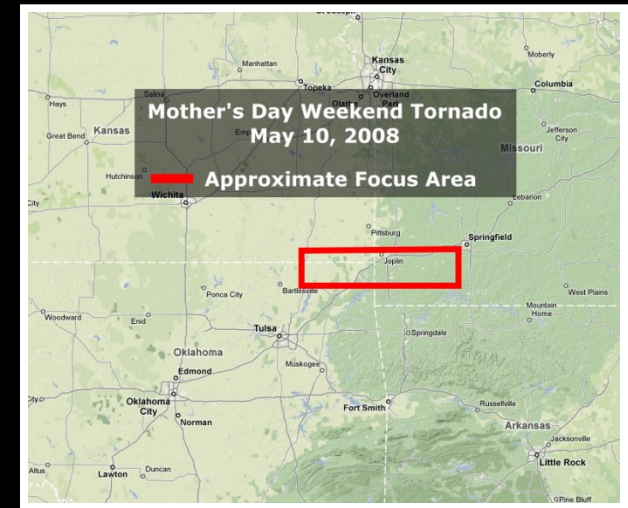
Mother's Day Outbreak

Service Assessment Team

Key Findings and Recommendations

Key Findings:

- Multiple Sources of information
- Social networks important
- Tornado Warnings and Severe Weather Statements provided confirmation of a tornado and the dangerous nature of the tornado

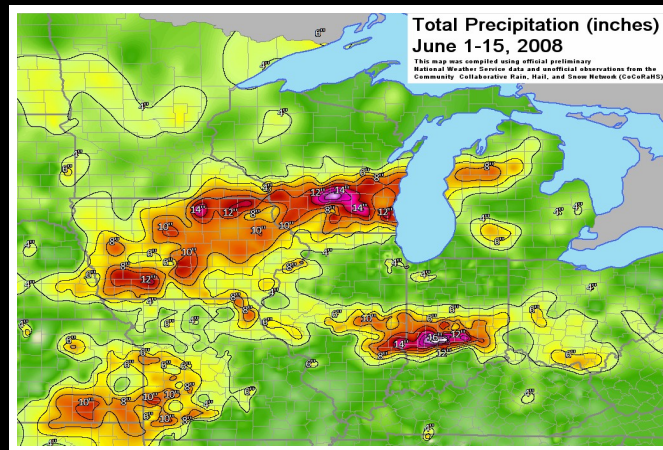
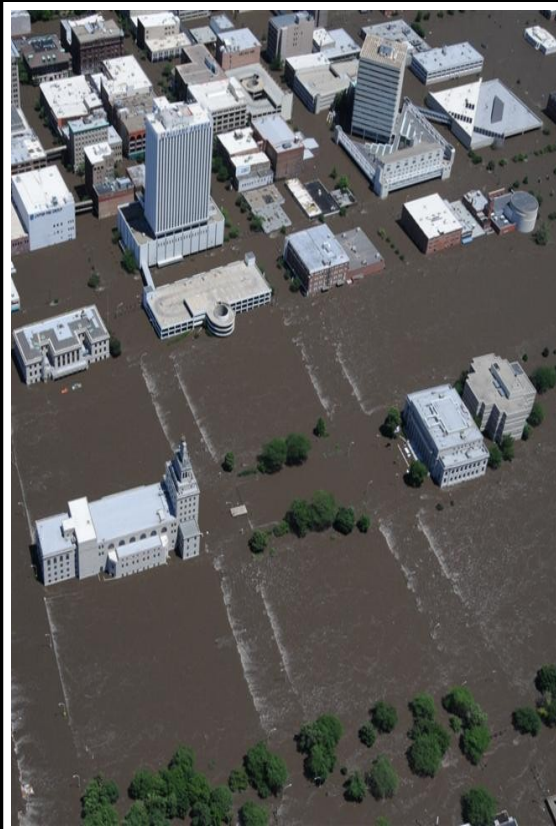


Recommendations:

- Increase emphasis on decision support services
- Develop public awareness campaigns

Severe Weather in 2008

Spring Midwest Flooding



- Flooding exceeded 500-year levels
- Warning lead times nearly twice national goal
- Seasonal outlook highlighted major flooding potential

Spring Midwest Flooding

Service Assessment Team

Key Findings and Recommendations

Key Findings:

- Forecast uncertainty info. very useful
- Use of flood terminology sometimes confusing

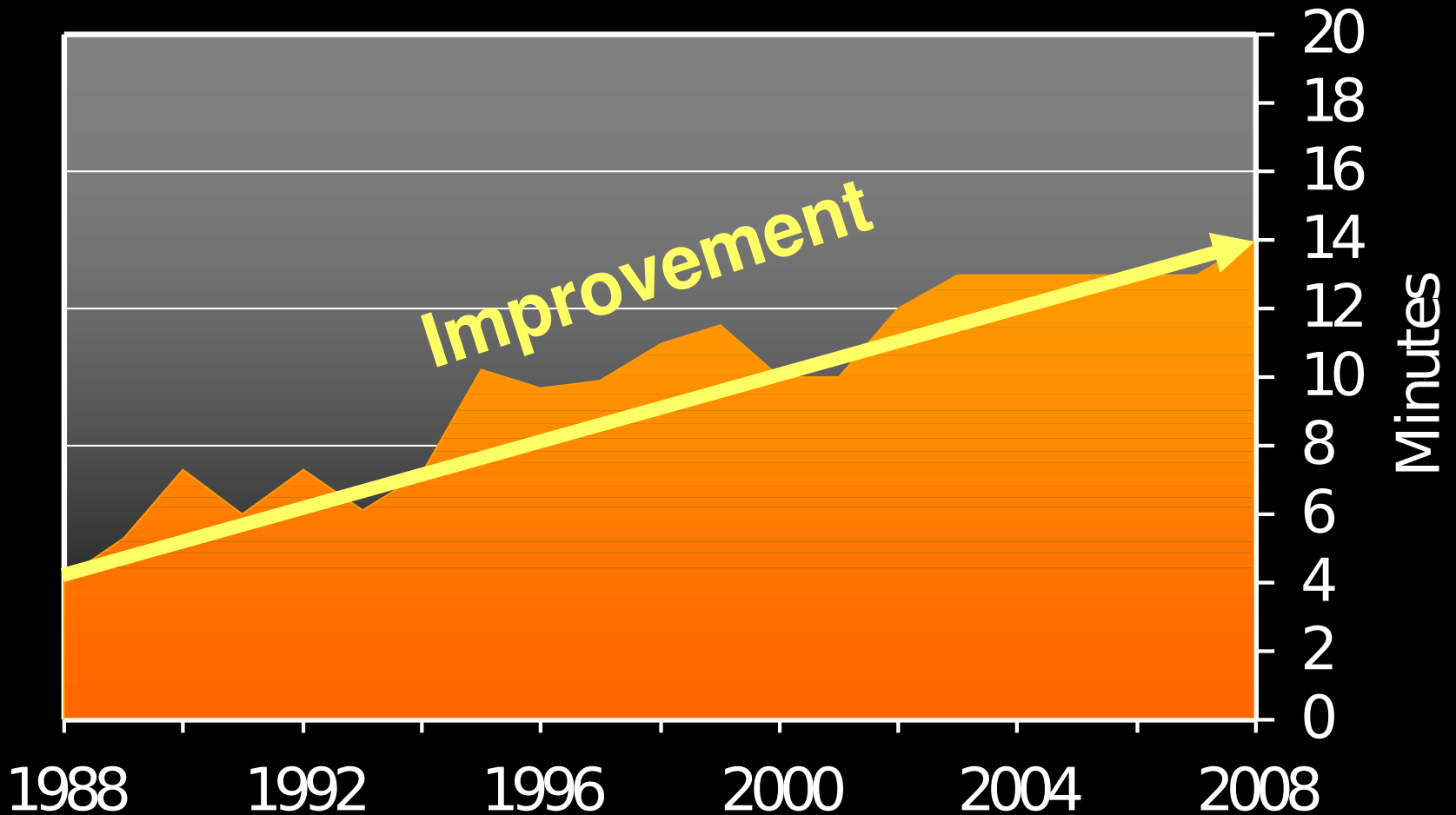
Recommendations:

- Share more uncertainty info. with other agencies
- Accelerate implementation of flood inundation mapping
- Continue to assess ways to integrate social science into NWS operations



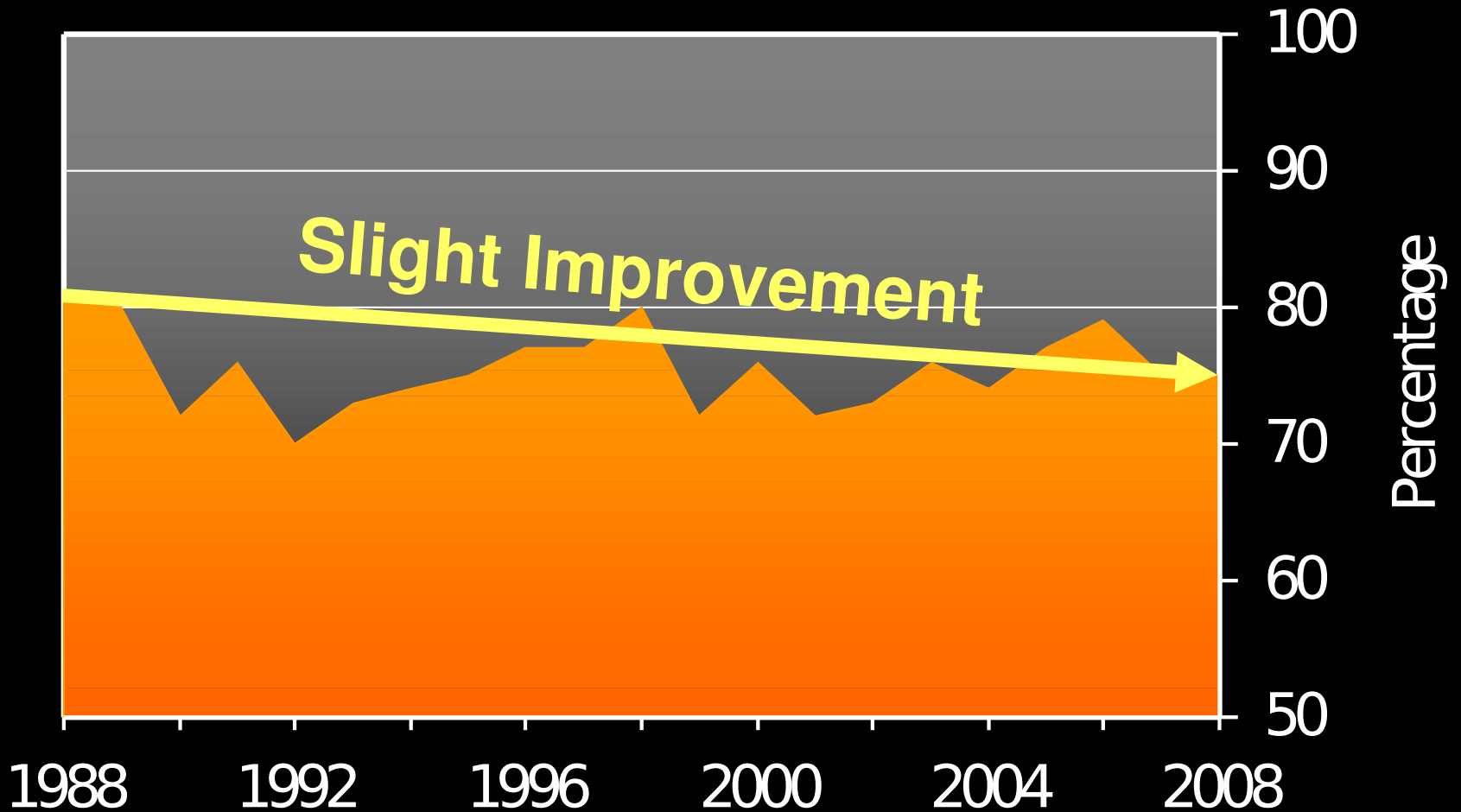
Improving Tornado Warnings

Greater Lead Times



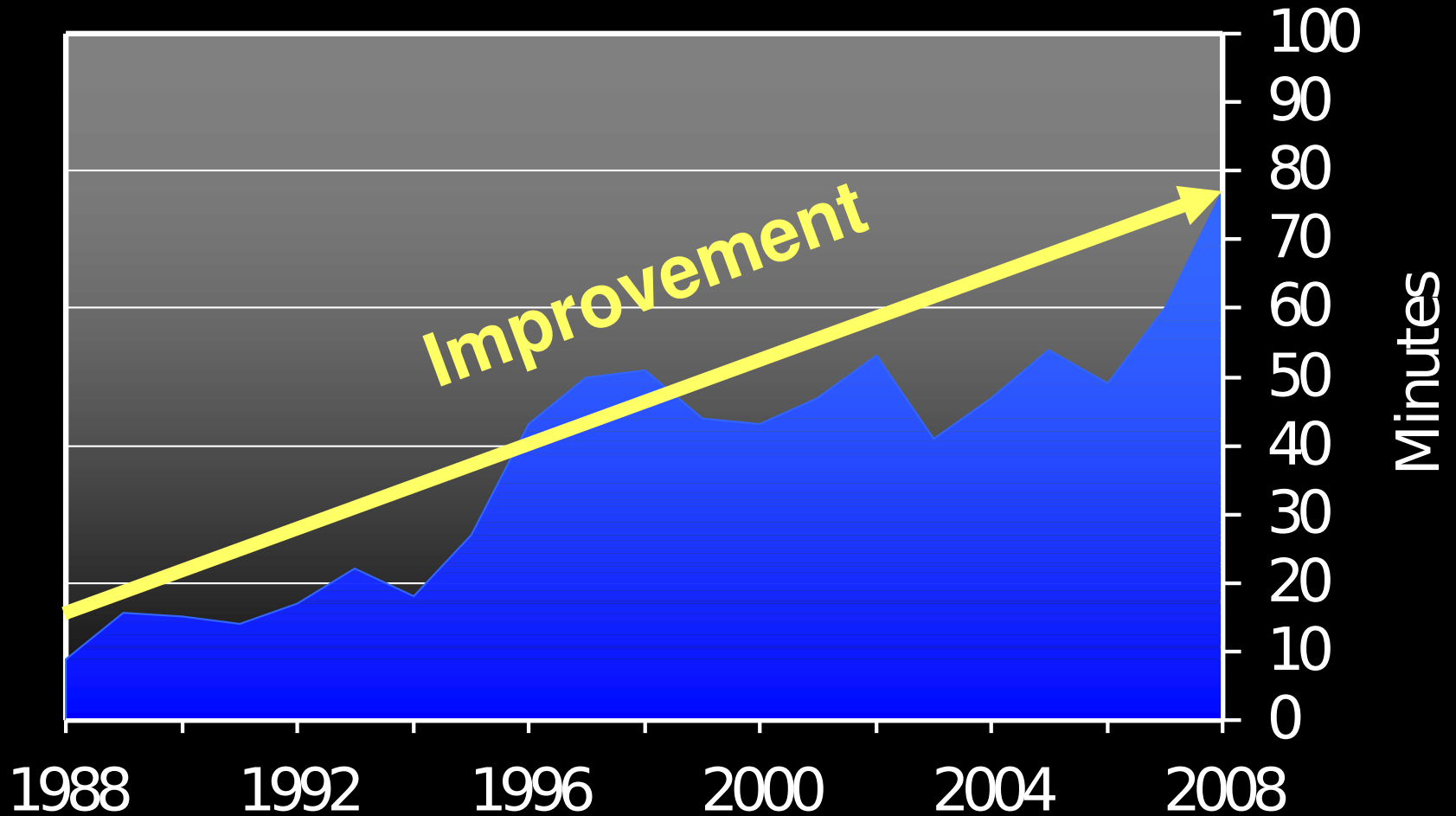
Improving Tornado Warnings

Lower False Alarm Rates



Improving Flash Flood Warnings

Greater Lead Times



Focusing on What Matters to You

Understanding Local Needs



Focusing on What Matters to You

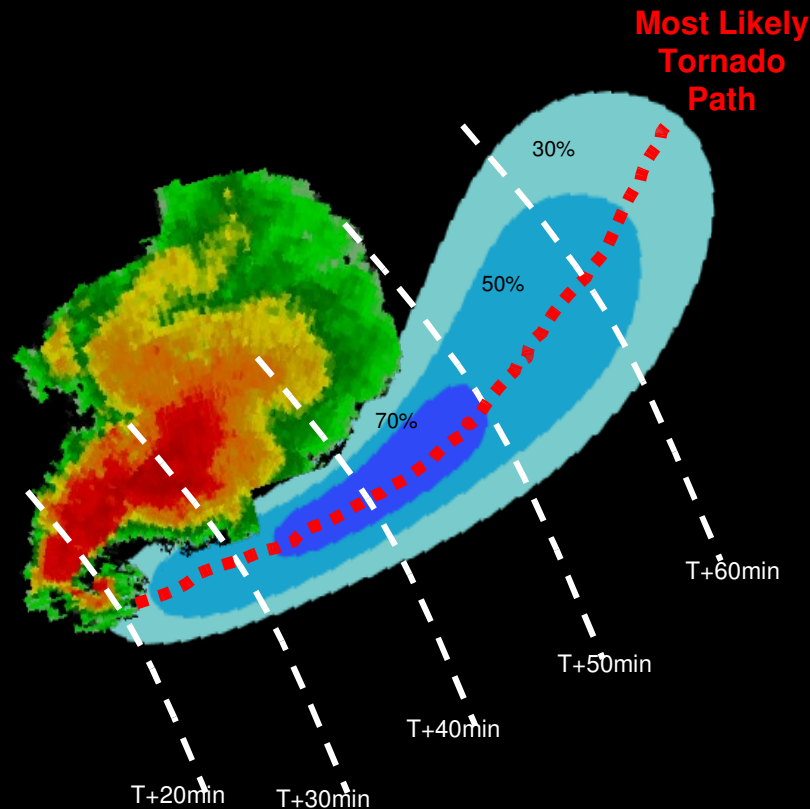
Providing Customer-Centric Information

Decision Support Services



Focusing on What Matters to You

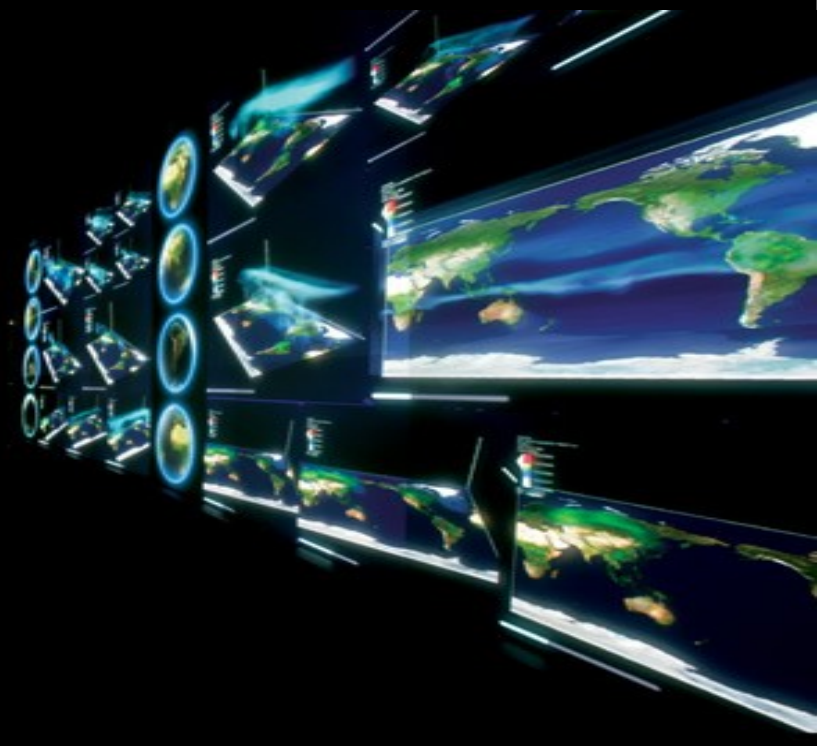
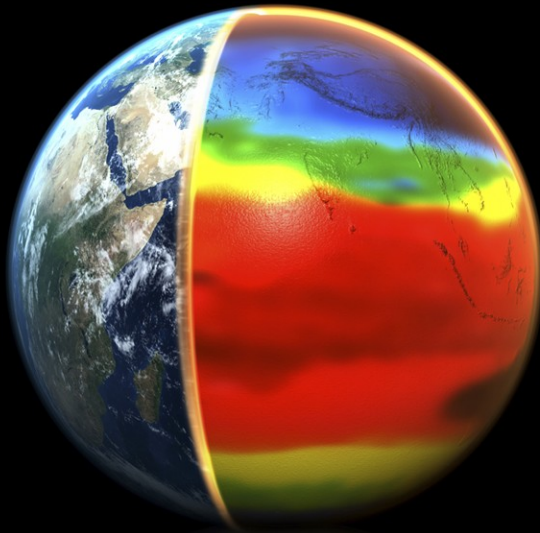
Issuing Warnings Based on Forecasts in all Service Areas



Focusing on What Matters to You

Implementing Next Generation Science and Technology

Integrating & Improving Earth System Models



Focusing on What Matters to You

Measuring Our Success

