

Table 16.1
Melanoma of the Skin (Invasive)

Trends in SEER Incidence^{ab} and U.S. Mortality^c Using the Joinpoint Regression Program,
1975-2007 With up to Four Joinpoints, 1992-2007 With up to Two Joinpoints,
Both Sexes by Race/Ethnicity

	Joinpoint Trend 1		Joinpoint Trend 2		Joinpoint Trend 3		Joinpoint Trend 4		Joinpoint Trend 5		AAPC ^d	
	Years	APC	Years	APC	Years	APC	Years	APC	Years	APC	1998-2007	2003-2007
<u>SEER 9 Delay-Adjusted Incidence^a, 1975-2007</u>												
All Races	1975-1985	4.6*	1985-2007	2.7*							2.7*	2.7*
White	1975-1981	6.5*	1981-2007	3.2*							3.2*	3.2*
Black	-	-									-	-
<u>SEER 13 Delay-Adjusted Incidence^b, 1992-2007</u>												
All Races	1992-1996	4.6*	1996-2007	1.8*							1.8*	1.8*
White	1992-2007	2.8*									2.8*	2.8*
Black	-	-									-	-
<u>SEER 9 Observed Incidence^a, 1975-2007</u>												
All Races	1975-1985	4.6*	1985-2007	2.6*							2.6*	2.6*
White	1975-1981	6.3*	1981-2005	3.2*	2005-2007	-1.3					2.1*	0.9
Black	1975-2007	-0.3									-0.3	-0.3
<u>SEER 13 Observed Incidence^b, 1992-2007</u>												
All Races	1992-1996	4.7*	1996-2007	1.6*							1.6*	1.6*
White	1992-2007	2.6*									2.6*	2.6*
White NH ^{ef}	1992-2007	3.1*									3.1*	3.1*
Black	1992-1995	29.1	1995-2007	-3.5*							-3.5*	-3.5*
Black NH ^{ef}	1992-1994	53.8	1994-2007	-2.8*							-2.8*	-2.8*
API ^e	1992-2007	1.4									1.4	1.4
AI/AN ^{eg}	1992-2007	1.5									1.5	1.5
Hispanic ^f	1992-1999	4.3*	1999-2007	-1.7*							-1.0	-1.7*
<u>U.S. Cancer Mortality^c, 1975-2007</u>												
All Races	1975-1989	1.6*	1989-2007	-0.1							-0.1	-0.1
White	1975-1989	1.7*	1989-2007	0.0							0.0	0.0
Black	1975-2007	-0.7*									-0.7*	-0.7*
<u>U.S. Cancer Mortality^c, 1992-2007</u>												
All Races	1992-2007	-0.1									-0.1	-0.1
White	1992-2007	0.1									0.1	0.1
White NH ^{ef}	1992-2007	0.3*									0.3*	0.3*
Black	1992-2007	-0.9									-0.9	-0.9
Black NH ^{ef}	1992-2007	-1.0									-1.0	-1.0
API ^e	1992-2007	-0.6									-0.6	-0.6
AI/AN ^{eg}	1992-2007	3.4									3.4	3.4
Hispanic ^f	1992-2007	-0.5									-0.5	-0.5

Joinpoint Regression Program Version 3.4.3, April 2010, National Cancer Institute. (<http://srab.cancer.gov/joinpoint/>).

The APC is the Annual Percent Change based on rates age-adjusted to the 2000 US Std Population (19 age groups - Census P25-1130).

^a Trends are from the SEER 9 areas (San Francisco, Connecticut, Detroit, Hawaii, Iowa, New Mexico, Seattle, Utah, and Atlanta).

^b Trends are from the SEER 13 areas (SEER 9 Areas, Los Angeles, San Jose-Monterey, Rural Georgia, and the Alaska Native Registry).

^c Trends are from US Mortality Files, National Center for Health Statistics, Centers for Disease Control and Prevention.

^d The AAPC is the Average Annual Percent Change and is based on the APCs calculated by Joinpoint.

^e API - Asian/Pacific Islander, AI/AN - American Indian/Alaska Native, NH - Non-Hispanic

^f Hispanic and Non-Hispanic are not mutually exclusive from whites, blacks, Asian/Pacific Islanders, and American Indians/Alaska

Natives. Incidence data for Hispanics and Non-Hispanics are based on NHIA and exclude cases from the Alaska Native Registry.

The Hispanic and Non-Hispanic mortality trends exclude deaths from CT, DC, ME, MD, MN, NH, NY, ND, OK and VT.

^g Data for American Indian/Alaska Native are based on the CHSDA (Contract Health Service Delivery Area) counties.

* The APC/AAPC is significantly different from zero ($p < .05$).

- Joinpoint regression line analysis could not be performed on data series.

Table 16.2
Melanoma of the Skin (Invasive)

Trends in SEER Incidence^{ab} and U.S. Mortality^c Using the Joinpoint Regression Program,
1975-2007 With up to Four Joinpoints, 1992-2007 With up to Two Joinpoints,
Males by Race/Ethnicity

	Joinpoint Trend 1		Joinpoint Trend 2		Joinpoint Trend 3		Joinpoint Trend 4		Joinpoint Trend 5		AAPC ^d	
	Years	APC	Years	APC	Years	APC	Years	APC	Years	APC	1998-2007	2003-2007
<u>SEER 9 Delay-Adjusted Incidence^a, 1975-2007</u>												
All Races	1975-1986	5.6*	1986-2007	2.9*							2.9*	2.9*
White	1975-1986	5.9*	1986-2007	3.2*							3.2*	3.2*
Black	-	-									-	-
<u>SEER 13 Delay-Adjusted Incidence^b, 1992-2007</u>												
All Races	1992-2007	2.4*									2.4*	2.4*
White	1992-2007	2.8*									2.8*	2.8*
Black	-	-									-	-
<u>SEER 9 Observed Incidence^a, 1975-2007</u>												
All Races	1975-1996	4.2*	1996-2007	2.0*							2.0*	2.0*
White	1975-1986	5.7*	1986-2005	3.3*	2005-2007	-1.5					2.2*	0.8
Black	1975-2007	0.2									0.2	0.2
<u>SEER 13 Observed Incidence^b, 1992-2007</u>												
All Races	1992-1996	5.0*	1996-2007	1.7*							1.7*	1.7*
White	1992-2007	2.6*									2.6*	2.6*
White NH ^{ef}	1992-2007	3.1*									3.1*	3.1*
Black	1992-1995	69.0*	1995-2007	-6.2*							-6.2*	-6.2*
Black NH ^{ef}	1992-1995	69.4*	1995-2007	-6.0*							-6.0*	-6.0*
API ^e	1992-2007	1.6									1.6	1.6
AI/AN ^{eg}	1992-2007	1.4									1.4	1.4
Hispanic ^f	1992-2007	1.1									1.1	1.1
<u>U.S. Cancer Mortality^c, 1975-2007</u>												
All Races	1975-1989	2.3*	1989-2007	0.2*							0.2*	0.2*
White	1975-1989	2.4*	1989-2007	0.3*							0.3*	0.3*
Black	1975-2007	-0.9*									-0.9*	-0.9*
<u>U.S. Cancer Mortality^c, 1992-2007</u>												
All Races	1992-2007	0.2									0.2	0.2
White	1992-2007	0.3*									0.3*	0.3*
White NH ^{ef}	1992-2007	0.5*									0.5*	0.5*
Black	1992-2007	0.4									0.4	0.4
Black NH ^{ef}	1992-2007	-0.1									-0.1	-0.1
API ^e	1992-2007	-0.8									-0.8	-0.8
AI/AN ^{eg}	1992-2007	6.0*									6.0*	6.0*
Hispanic ^f	1992-2007	-0.4									-0.4	-0.4

Joinpoint Regression Program Version 3.4.3, April 2010, National Cancer Institute. (<http://srab.cancer.gov/joinpoint/>).

The APC is the Annual Percent Change based on rates age-adjusted to the 2000 US Std Population (19 age groups - Census P25-1130).

^a Trends are from the SEER 9 areas (San Francisco, Connecticut, Detroit, Hawaii, Iowa, New Mexico, Seattle, Utah, and Atlanta).

^b Trends are from the SEER 13 areas (SEER 9 Areas, Los Angeles, San Jose-Monterey, Rural Georgia, and the Alaska Native Registry).

^c Trends are from US Mortality Files, National Center for Health Statistics, Centers for Disease Control and Prevention.

^d The AAPC is the Average Annual Percent Change and is based on the APCs calculated by Joinpoint.

^e API - Asian/Pacific Islander, AI/AN - American Indian/Alaska Native, NH - Non-Hispanic

^f Hispanic and Non-Hispanic are not mutually exclusive from whites, blacks, Asian/Pacific Islanders, and American Indians/Alaska

Natives. Incidence data for Hispanics and Non-Hispanics are based on NHIA and exclude cases from the Alaska Native Registry.

The Hispanic and Non-Hispanic mortality trends exclude deaths from CT, DC, ME, MD, MN, NH, NY, ND, OK and VT.

^g Data for American Indian/Alaska Native are based on the CHSDA (Contract Health Service Delivery Area) counties.

* The APC/AAPC is significantly different from zero ($p < .05$).

- Joinpoint regression line analysis could not be performed on data series.

Table 16.3
Melanoma of the Skin (Invasive)

Trends in SEER Incidence^{ab} and U.S. Mortality^c Using the Joinpoint Regression Program,
1975-2007 With up to Four Joinpoints, 1992-2007 With up to Two Joinpoints,
Females by Race/Ethnicity

	Joinpoint Trend 1		Joinpoint Trend 2		Joinpoint Trend 3		Joinpoint Trend 4		Joinpoint Trend 5		AAPC ^d	
	Years	APC	Years	APC	Years	APC	Years	APC	Years	APC	1998-2007	2003-2007
<u>SEER 9 Delay-Adjusted Incidence^a, 1975-2007</u>												
All Races	1975-1980	5.5*	1980-2007	2.4*							2.4*	2.4*
White	1975-1981	6.1*	1981-1992	2.2*	1992-2007	3.2*					3.2*	3.2*
Black	-	-									-	-
<u>SEER 13 Delay-Adjusted Incidence^b, 1992-2007</u>												
All Races	1992-2007	2.2*									2.2*	2.2*
White	1992-2007	2.8*									2.8*	2.8*
Black	-	-									-	-
<u>SEER 9 Observed Incidence^a, 1975-2007</u>												
All Races	1975-1981	5.0*	1981-2007	2.3*							2.3*	2.3*
White	1975-1981	6.3*	1981-1994	2.0*	1994-1997	5.7	1997-2007	2.3*			2.3*	2.3*
Black	1975-2007	-0.7									-0.7	-0.7
<u>SEER 13 Observed Incidence^b, 1992-2007</u>												
All Races	1992-1997	3.9*	1997-2007	1.5*							1.5*	1.5*
White	1992-1997	4.7*	1997-2007	2.0*							2.0*	2.0*
White NH ^{ef}	1992-2007	3.2*									3.2*	3.2*
Black	1992-2007	-0.3									-0.3	-0.3
Black NH ^{ef}	1992-2007	-0.4									-0.4	-0.4
API ^e	1992-2007	1.4									1.4	1.4
AI/AN ^{eg}	1992-2007	1.9									1.9	1.9
Hispanic ^f	1992-2007	0.6									0.6	0.6
<u>U.S. Cancer Mortality^c, 1975-2007</u>												
All Races	1975-1988	0.8*	1988-2007	-0.6*							-0.6*	-0.6*
White	1975-1988	0.9*	1988-2007	-0.4*							-0.4*	-0.4*
Black	1975-2007	-0.5									-0.5	-0.5
<u>U.S. Cancer Mortality^c, 1992-2007</u>												
All Races	1992-2007	-0.6*									-0.6*	-0.6*
White	1992-2007	-0.4*									-0.4*	-0.4*
White NH ^{ef}	1992-2007	-0.2									-0.2	-0.2
Black	1992-2007	-1.7									-1.7	-1.7
Black NH ^{ef}	1992-2007	-1.5									-1.5	-1.5
API ^e	1992-2007	-0.2									-0.2	-0.2
AI/AN ^{eg}	-	-									-	-
Hispanic ^f	1992-2007	-0.7									-0.7	-0.7

Joinpoint Regression Program Version 3.4.3, April 2010, National Cancer Institute. (<http://srab.cancer.gov/joinpoint/>).

The APC is the Annual Percent Change based on rates age-adjusted to the 2000 US Std Population (19 age groups - Census P25-1130).

^a Trends are from the SEER 9 areas (San Francisco, Connecticut, Detroit, Hawaii, Iowa, New Mexico, Seattle, Utah, and Atlanta).

^b Trends are from the SEER 13 areas (SEER 9 Areas, Los Angeles, San Jose-Monterey, Rural Georgia, and the Alaska Native Registry).

^c Trends are from US Mortality Files, National Center for Health Statistics, Centers for Disease Control and Prevention.

^d The AAPC is the Average Annual Percent Change and is based on the APCs calculated by Joinpoint.

^e API - Asian/Pacific Islander, AI/AN - American Indian/Alaska Native, NH - Non-Hispanic

^f Hispanic and Non-Hispanic are not mutually exclusive from whites, blacks, Asian/Pacific Islanders, and American Indians/Alaska

Natives. Incidence data for Hispanics and Non-Hispanics are based on NHIA and exclude cases from the Alaska Native Registry.

The Hispanic and Non-Hispanic mortality trends exclude deaths from CT, DC, ME, MD, MN, NH, NY, ND, OK and VT.

^g Data for American Indian/Alaska Native are based on the CHSDA (Contract Health Service Delivery Area) counties.

* The APC/AAPC is significantly different from zero ($p < .05$).

- Joinpoint regression line analysis could not be performed on data series.

Table 16.4
Melanoma of the Skin (Invasive)

Delay-adjusted SEER Incidence^a Rates by Year, Race and Sex

Year of Diagnosis:	All Races			Whites			Blacks		
	Total	Males	Females	Total	Males	Females	Total	Males	Females
1975	7.89	8.54	7.44	8.70	9.41	8.21	0.00	0.00	0.00
1976	8.16	8.68	7.69	9.00	9.54	8.52	0.00	0.00	0.00
1977	8.86	9.77	8.15	9.86	10.82	9.15	0.00	0.00	0.00
1978	8.95	9.49	8.73	10.10	10.72	9.87	0.00	0.00	0.00
1979	9.55	10.56	8.91	10.76	11.86	10.10	0.00	0.00	0.00
1980	10.50	11.77	9.63	12.01	13.37	11.12	0.00	0.00	0.00
1981	11.09	12.09	10.44	12.58	13.56	12.01	0.00	0.00	0.00
1982	11.18	12.49	10.27	12.78	14.16	11.86	0.00	0.00	0.00
1983	11.08	12.66	10.01	12.63	14.41	11.45	0.00	0.00	0.00
1984	11.40	12.91	10.43	13.07	14.81	11.98	0.00	0.00	0.00
1985	12.76	15.14	11.15	14.49	17.19	12.70	0.00	0.00	0.00
1986	13.32	15.69	11.62	15.21	17.88	13.34	0.00	0.00	0.00
1987	13.68	15.93	12.17	15.65	18.16	14.00	0.00	0.00	0.00
1988	12.88	14.99	11.45	14.95	17.45	13.27	0.00	0.00	0.00
1989	13.76	16.43	11.93	15.99	19.02	13.93	0.00	0.00	0.00
1990	13.87	16.68	11.87	16.22	19.37	13.99	0.00	0.00	0.00
1991	14.63	17.62	12.54	17.15	20.54	14.80	0.00	0.00	0.00
1992	14.81	18.36	12.24	17.30	21.33	14.42	0.00	0.00	0.00
1993	14.64	18.16	12.11	17.14	21.12	14.30	0.00	0.00	0.00
1994	15.66	19.83	12.61	18.48	23.33	14.97	0.00	0.00	0.00
1995	16.47	20.29	13.82	19.42	23.62	16.57	0.00	0.00	0.00
1996	17.35	21.73	14.18	20.60	25.51	17.07	0.00	0.00	0.00
1997	17.78	21.76	14.91	21.08	25.41	18.02	0.00	0.00	0.00
1998	17.95	22.19	15.00	21.58	26.36	18.28	0.00	0.00	0.00
1999	18.34	22.93	15.13	22.10	27.24	18.54	0.00	0.00	0.00
2000	18.97	23.92	15.51	23.07	28.61	19.26	0.00	0.00	0.00
2001	19.69	24.50	16.32	24.10	29.49	20.37	0.00	0.00	0.00
2002	19.25	23.88	16.07	23.48	28.58	20.04	0.00	0.00	0.00
2003	19.53	24.10	16.33	23.90	28.94	20.42	0.00	0.00	0.00
2004	20.55	25.30	17.27	25.29	30.79	21.52	0.00	0.00	0.00
2005	22.27	27.84	18.38	27.64	33.95	23.27	0.00	0.00	0.00
2006	21.84	27.08	18.15	26.91	32.80	22.84	0.00	0.00	0.00
2007	21.48	26.87	17.83	26.53	32.59	22.49	0.00	0.00	0.00

Additional information on the model used to delay-adjust SEER Incidence rates can be found at (<http://srab.cancer.gov/delay/>).

^a SEER 9 areas (San Francisco, Connecticut, Detroit, Hawaii, Iowa, New Mexico, Seattle, Utah, and Atlanta).
Rates are per 100,000 and are age-adjusted to the 2000 US Std Population (19 age groups - Census P25-1130).
- Delay-adjusted rate is not shown for observed rates based on less than 16 cases for the time interval.

Table 16.5
Melanoma of the Skin (Invasive)

Age-adjusted SEER Incidence^a Rates by Year, Race and Sex

Year of Diagnosis:	All Races			Whites			Blacks		
	Total	Males	Females	Total	Males	Females	Total	Males	Females
1975	7.89	8.54	7.44	8.70	9.41	8.21	-	-	-
1976	8.16	8.68	7.69	9.00	9.54	8.52	1.75	-	-
1977	8.86	9.77	8.15	9.86	10.82	9.15	-	-	-
1978	8.95	9.49	8.73	10.10	10.72	9.87	-	-	-
1979	9.55	10.56	8.91	10.76	11.86	10.10	-	-	-
1980	10.50	11.77	9.63	12.01	13.37	11.12	-	-	-
1981	11.09	12.09	10.44	12.58	13.56	12.01	1.35	-	-
1982	11.17	12.49	10.27	12.78	14.16	11.85	-	-	-
1983	11.08	12.65	10.01	12.61	14.39	11.44	-	-	-
1984	11.39	12.90	10.42	13.05	14.78	11.96	-	-	-
1985	12.75	15.13	11.14	14.45	17.15	12.67	-	-	-
1986	13.31	15.68	11.61	15.17	17.83	13.31	-	-	-
1987	13.66	15.92	12.15	15.60	18.10	13.96	1.30	-	-
1988	12.86	14.97	11.43	14.90	17.40	13.23	1.07	-	-
1989	13.74	16.40	11.92	15.91	18.93	13.86	1.19	-	-
1990	13.85	16.66	11.85	16.13	19.27	13.92	1.16	-	-
1991	14.61	17.59	12.52	17.06	20.43	14.72	1.17	-	-
1992	14.78	18.33	12.21	17.19	21.20	14.34	-	-	-
1993	14.61	18.12	12.08	17.02	20.98	14.20	-	-	-
1994	15.62	19.78	12.58	18.34	23.16	14.86	1.03	-	-
1995	16.42	20.23	13.78	19.26	23.42	16.44	1.65	2.97	-
1996	17.29	21.66	14.14	20.43	25.30	16.93	1.06	-	-
1997	17.72	21.68	14.86	20.89	25.18	17.86	1.10	-	-
1998	17.88	22.10	14.94	21.39	26.13	18.12	1.19	-	-
1999	18.25	22.83	15.06	21.83	26.91	18.32	1.14	-	-
2000	18.87	23.79	15.43	22.77	28.23	19.00	0.80	-	-
2001	19.57	24.35	16.22	23.75	29.06	20.07	0.81	-	-
2002	19.11	23.70	15.95	23.09	28.11	19.71	1.04	-	-
2003	19.35	23.88	16.18	23.44	28.39	20.04	0.83	-	-
2004	20.32	25.02	17.07	24.74	30.12	21.05	0.83	-	-
2005	21.97	27.46	18.13	26.95	33.09	22.68	1.05	-	1.00
2006	21.47	26.62	17.84	26.12	31.83	22.16	0.89	-	-
2007	20.81	26.03	17.27	25.32	31.10	21.46	1.13	-	-
1975-2007	15.43	18.83	13.12	18.04	21.85	15.51	0.99	1.18	0.88

^a SEER 9 areas (San Francisco, Connecticut, Detroit, Hawaii, Iowa, New Mexico, Seattle, Utah, and Atlanta). Rates are per 100,000 and are age-adjusted to the 2000 US Std Population (19 age groups - Census P25-1130).
- Statistic not shown. Rate based on less than 16 cases for the time interval.

Table 16.6
Melanoma of the Skin (Invasive)

Age-adjusted U.S. Death^a Rates by Year, Race and Sex

Year of Death:	All Races			Whites			Blacks		
	Total	Males	Females	Total	Males	Females	Total	Males	Females
1975	2.07	2.64	1.60	2.25	2.88	1.74	0.50	0.56	0.44
1976	2.24	2.86	1.76	2.45	3.10	1.94	0.55	0.74	0.39
1977	2.27	2.91	1.76	2.48	3.17	1.93	0.53	0.69	0.41
1978	2.31	3.04	1.74	2.53	3.32	1.90	0.52	0.61	0.46
1979	2.42	3.16	1.84	2.66	3.46	2.02	0.53	0.64	0.47
1980	2.34	3.10	1.74	2.57	3.41	1.90	0.54	0.55	0.56
1981	2.43	3.13	1.88	2.68	3.45	2.07	0.58	0.56	0.57
1982	2.46	3.31	1.81	2.71	3.64	1.99	0.52	0.56	0.49
1983	2.48	3.29	1.85	2.74	3.63	2.04	0.50	0.63	0.40
1984	2.53	3.42	1.85	2.80	3.79	2.03	0.51	0.45	0.54
1985	2.56	3.46	1.86	2.83	3.82	2.06	0.53	0.58	0.49
1986	2.59	3.55	1.88	2.88	3.92	2.09	0.47	0.70	0.31
1987	2.65	3.73	1.83	2.93	4.13	2.02	0.55	0.57	0.54
1988	2.65	3.67	1.90	2.95	4.07	2.13	0.45	0.53	0.40
1989	2.69	3.74	1.89	2.99	4.15	2.10	0.55	0.57	0.53
1990	2.75	3.80	1.97	3.06	4.21	2.20	0.52	0.65	0.45
1991	2.71	3.89	1.82	3.01	4.31	2.02	0.59	0.65	0.54
1992	2.71	3.85	1.85	3.01	4.27	2.06	0.51	0.57	0.44
1993	2.71	3.86	1.86	3.03	4.31	2.06	0.53	0.42	0.59
1994	2.66	3.82	1.81	2.98	4.26	2.03	0.45	0.44	0.43
1995	2.70	3.89	1.81	3.03	4.35	2.02	0.46	0.51	0.42
1996	2.80	4.04	1.90	3.14	4.50	2.14	0.44	0.51	0.38
1997	2.73	3.94	1.84	3.06	4.41	2.05	0.56	0.49	0.58
1998	2.75	4.09	1.77	3.10	4.59	1.98	0.51	0.45	0.54
1999	2.63	3.81	1.74	2.97	4.27	1.98	0.40	0.52	0.33
2000	2.66	3.82	1.81	3.00	4.28	2.03	0.54	0.59	0.50
2001	2.66	3.88	1.75	3.02	4.37	1.99	0.42	0.35	0.45
2002	2.60	3.77	1.72	2.95	4.24	1.96	0.39	0.49	0.32
2003	2.66	3.88	1.74	3.02	4.38	1.97	0.44	0.43	0.44
2004	2.66	3.94	1.70	3.03	4.46	1.94	0.44	0.55	0.38
2005	2.74	4.00	1.81	3.12	4.52	2.06	0.44	0.48	0.40
2006	2.72	4.07	1.72	3.10	4.60	1.97	0.44	0.60	0.35
2007	2.67	3.98	1.68	3.04	4.51	1.92	0.47	0.51	0.45
1975-2007	2.61	3.69	1.80	2.91	4.11	2.01	0.49	0.54	0.45

^a US Mortality Files, National Center for Health Statistics, Centers for Disease Control and Prevention.
Rates are per 100,000 and are age-adjusted to the 2000 US Std Population (19 age groups - Census P25-1130).
- Statistic not shown. Rate based on less than 16 cases for the time interval.

Table 16.7
Melanoma of the Skin (Invasive)

SEER Incidence^a and U.S. Death^b Rates, Age-Adjusted and Age-Specific Rates, by Race and Sex

	All Races			Whites			Blacks		
	Total	Males	Females	Total	Males	Females	Total	Males	Females
<u>SEER Incidence</u>									
<u>Age at Diagnosis</u>									
Age-Adjusted Rates, 2003-2007									
All ages	20.1	25.6	16.2	23.5	29.7	19.1	1.0	1.1	1.0
Under 65	12.8	13.4	12.4	15.2	15.7	14.9	0.5	0.4	0.5
65 and over	70.4	110.5	42.5	80.7	126.3	48.4	5.0	5.8	4.5
All ages (IARC world std) ^c	14.3	17.2	12.2	16.9	20.0	14.6	0.7	0.7	0.6
Age-Specific Rates, 2003-2007									
<1	-	-	-	-	-	-	-	-	-
1-4	0.1	-	-	-	-	-	-	-	-
5-9	0.2	0.2	0.2	0.2	0.2	0.2	-	-	-
10-14	0.4	0.4	0.4	0.5	0.4	0.5	-	-	-
15-19	1.6	1.2	2.0	1.9	1.4	2.5	-	-	-
20-24	4.3	2.5	6.1	5.1	3.1	7.3	-	-	-
25-29	7.5	4.9	10.2	9.0	5.8	12.6	-	-	-
30-34	9.5	7.0	12.0	11.5	8.4	14.8	-	-	-
35-39	12.8	10.0	15.7	15.6	12.2	19.2	0.6	-	-
40-44	17.7	15.9	19.4	21.1	18.8	23.5	0.5	-	-
45-49	23.3	23.4	23.1	27.7	27.6	27.7	0.8	-	-
50-54	29.0	32.7	25.5	34.4	38.4	30.3	0.7	-	-
55-59	36.6	46.2	27.5	42.7	53.3	32.4	1.6	1.8	1.6
60-64	47.2	63.6	32.1	55.0	73.7	37.5	1.7	-	-
65-69	55.0	78.3	34.8	64.6	90.9	41.2	3.1	4.1	-
70-74	66.8	99.4	40.5	77.9	115.3	47.0	5.1	5.9	4.5
75-79	81.0	128.4	46.8	92.8	146.6	53.4	5.0	-	4.7
80-84	85.9	141.7	50.8	96.1	160.1	55.8	7.5	-	8.0
85+	75.6	137.2	46.3	83.2	153.2	50.4	6.1	-	-
<u>U.S. Mortality</u>									
<u>Age at Death</u>									
Age-Adjusted Rates, 2003-2007									
All ages	2.7	4.0	1.7	3.1	4.5	2.0	0.4	0.5	0.4
Under 65	1.3	1.7	0.9	1.5	2.0	1.1	0.2	0.2	0.1
65 and over	12.5	19.9	7.6	13.9	22.1	8.3	2.4	2.7	2.3
All ages (IARC world std) ^c	1.7	2.5	1.1	2.0	2.8	1.3	0.3	0.3	0.2
Age-Specific Rates, 2003-2007									
<1	-	-	-	-	-	-	-	-	-
1-4	-	-	-	-	-	-	-	-	-
5-9	-	-	-	-	-	-	-	-	-
10-14	-	-	-	-	-	-	-	-	-
15-19	0.0	0.0	0.0	0.1	0.1	0.0	-	-	-
20-24	0.1	0.2	0.1	0.2	0.2	0.1	-	-	-
25-29	0.4	0.4	0.3	0.4	0.5	0.4	-	-	-
30-34	0.6	0.7	0.5	0.8	0.9	0.6	-	-	-
35-39	0.9	1.0	0.7	1.1	1.2	0.9	-	-	-
40-44	1.5	1.8	1.2	1.8	2.1	1.4	0.3	0.3	0.2
45-49	2.3	2.8	1.8	2.7	3.3	2.1	0.2	0.3	-
50-54	3.3	4.5	2.2	3.9	5.2	2.6	0.3	0.4	0.3
55-59	4.7	6.6	3.0	5.4	7.5	3.4	0.6	0.8	0.4
60-64	6.1	8.7	3.7	7.0	9.9	4.2	1.0	1.2	0.8
65-69	7.9	11.5	4.8	9.0	13.1	5.4	1.1	1.2	1.1
70-74	10.6	15.8	6.4	12.0	17.9	7.1	1.4	-	1.8
75-79	14.1	22.4	8.1	15.6	24.7	8.9	2.8	3.7	2.3
80-84	16.7	27.2	10.1	18.2	29.8	10.9	3.7	4.1	3.5
85+	19.1	34.1	12.3	20.7	37.2	13.2	5.0	6.2	4.5

^a SEER 17 areas. Rates are per 100,000 and are age-adjusted to the 2000 US Std Population (19 age groups - Census P25-1130), unless noted.

^b US Mortality Files, National Center for Health Statistics, Centers for Disease Control and Prevention. Rates are per 100,000 and are age-adjusted to the 2000 US Std Population (19 age groups - Census P25-1130), unless noted.

^c Rates are per 100,000 and are age-adjusted to the IARC world standard population.

- Statistic not shown. Rate based on less than 16 cases for the time interval.

Table 16.8
Melanoma of the Skin (Invasive)

5-Year Relative and Period Survival (Percent) by Race, Sex, Diagnosis Year, Stage and Age

	All Races			Whites			Blacks		
	Total	Males	Females	Total	Males	Females	Total	Males	Females
5-Year Relative Survival (Percent)									
Year of Diagnosis:									
1960-1963 ^a	-	-	-	60	51	68	-	-	-
1970-1973 ^a	-	-	-	68	62	75	-	-	-
1975-1977 ^b	82.6	78.1	86.9	82.5	78.1	86.9	59.9 ^f	-	-
1978-1980 ^b	83.2	78.1	88.1	83.2	78.1	88.2	59.7 ^g	-	-
1981-1983 ^b	83.3	78.8	87.8	83.2	78.8	87.7	60.7 ^f	-	-
1984-1986 ^b	87.0	82.8	91.3	86.7	82.4	91.2	69.8 ^g	-	-
1987-1989 ^b	88.5	85.4	91.8	88.3	85.3	91.5	79.3 ^f	-	89.5 ^f
1990-1992 ^b	89.5	87.1	92.1	89.5	87.2	92.1	60.1 ^f	-	-
1993-1995 ^b	90.0	87.5	92.9	89.8	87.2	92.9	67.5 ^f	63.5 ^f	-
1996-1998 ^b	91.4	89.9	93.2	91.3	89.6	93.3	75.0 ^f	70.1 ^g	78.5 ^f
1999-2006 ^b	93.0 ^e	91.1 ^e	95.1 ^e	92.9 ^e	91.0 ^e	95.1 ^e	74.1 ^f	73.7 ^f	73.6 ^f
5-Year Period Survival (Percent) ^{cd}									
Year of Diagnosis:									
1999-2006	91.2	89.2	93.5	90.9	88.8	93.4	79.9	72.5	84.8
Stage Distribution (%) 1999-2006 ^c									
All Stages									
Number of cases	84,118	46,408	37,710	79,453	44,075	35,378	389	167	222
Percent	100%	100%	100%	100%	100%	100%	100%	100%	100%
Localized	84	82	86	84	82	86	58	51	64
Regional	8	9	7	9	9	7	21	21	21
Distant	4	4	3	4	5	3	13	19	8
Unstaged	4	4	4	4	4	4	8	8	7
5-Year Relative Survival (Percent), 1999-2006 ^c									
Age at Diagnosis:									
Ages <45	94.2	91.2	96.4	94.1	91.0	96.3	74.8	67.5 ^f	78.8 ^f
Ages 45-54	91.9	89.6	94.8	91.6	89.2	94.6	83.8 ^f	-	80.0 ^g
Ages 55-64	91.6	89.9	94.4	91.3	89.6	94.2	81.9 ^f	75.6 ^f	88.0 ^f
Ages 65-74	89.6	88.4	91.6	89.5	88.4	91.3	68.3 ^f	58.5 ^g	76.8 ^g
Ages 75+	84.9	83.9	86.0	84.7	83.8	85.8	57.1 ^f	51.3 ^g	56.8 ^g
Ages <65	92.8	90.3	95.5	92.5	90.0	95.3	78.6	75.0 ^f	81.2
Ages 65+	87.8	86.9	89.0	87.7	86.9	88.8	64.0 ^f	57.5 ^f	67.2 ^f
Stage:									
All Stages	91.4	89.3	93.9	91.1	89.0	93.7	74.6	70.0	77.9
Localized	98.0	97.3	98.7	97.8	97.2	98.5	92.9	89.0 ^f	94.8
Regional	62.1	58.5	67.5	62.5	58.7	68.2	44.7 ^f	55.3 ^g	33.1 ^g
Distant	15.9	14.9	18.0	15.4	14.7	17.1	32.7 ^f	31.0 ^f	-
Unstaged	76.0	73.2	79.7	74.8	72.0	78.5	68.4 ^g	-	-

^a Based on End Results data from a series of hospital registries and one population-based registry.

^b Based on the SEER 9 areas (San Francisco, Connecticut, Detroit, Hawaii, Iowa, New Mexico, Seattle, Utah, Atlanta).

Based on follow-up of patients into 2007.

^c Based on the SEER 17 areas (San Francisco, Connecticut, Detroit, Hawaii, Iowa, New Mexico, Seattle, Utah, Atlanta, San Jose-Monterey, Los Angeles, Alaska Native Registry, Rural Georgia, California excluding SF/SJM/LA, Kentucky, Louisiana and New Jersey). California excluding SF/SJM/LA, Kentucky, Louisiana, and New Jersey contribute cases for diagnosis years 2000-2006. The remaining 13 SEER Areas contribute cases for the entire period 1999-2006. Based on follow-up of patients into 2007.

^d Period survival provides a more up-to-date estimate of survival by piecing together the most recent conditional survival estimates from several cohorts. It is computed here using three year calendar blocks (2004-2006: 0-1 year survival),

(2003-2005: 1-2 year survival), (2002-2004: 2-3 year survival), (2001-2003: 3-4 year survival), (2000-2002: 4-5 years survival).

^e The difference between 1975-1977 and 1999-2006 is statistically significant ($p < .05$).

^f The standard error is between 5 and 10 percentage points.

^g The standard error is greater than 10 percentage points.

- Statistic could not be calculated due to fewer than 25 cases during the time period.

Table 16.9
Melanoma of the Skin (Invasive)
SEER^a Relative Survival (Percent)
By Year of Diagnosis

All Races, Males and Females

Survival Time	Year of Diagnosis																			
	1975- 1979	1980- 1984	1985- 1989	1990	1991	1992	1993	1994	1995	1996	1997	1998	1999	2000	2001	2002	2003	2004	2005	2006
1-year	94.6	95.9	96.5	96.7	97.2	96.3	96.9	97.1	97.5	97.7	96.9	96.8	97.7	98.0	97.5	98.0	98.0	97.8	98.0	97.7
2-year	90.1	91.9	93.4	93.8	94.2	93.8	94.5	94.0	94.5	95.8	94.6	94.7	95.8	96.2	95.7	95.6	96.3	96.3	96.2	
3-year	86.5	88.3	91.0	92.0	92.1	91.8	92.7	91.8	92.9	94.1	92.6	92.9	94.2	94.7	94.3	94.4	95.0	94.7		
4-year	83.9	85.8	89.4	90.2	90.9	89.9	91.0	90.1	91.6	93.3	91.7	91.8	93.4	93.3	93.1	93.4	93.8			
5-year	82.6	83.9	88.1	89.6	89.9	88.9	90.4	89.1	90.4	92.4	90.5	91.3	92.7	92.4	92.5	93.1				
6-year	80.9	82.9	87.1	88.6	88.8	88.5	89.9	88.2	90.4	91.7	90.0	90.8	92.1	92.0	91.8					
7-year	79.8	82.3	86.4	88.2	88.0	88.2	88.9	87.7	90.4	91.4	89.5	90.8	92.0	91.8						
8-year	78.8	81.7	85.9	87.5	87.4	87.8	88.5	86.9	90.4	91.0	88.8	90.4	91.7							
9-year	78.2	81.2	85.7	87.4	87.1	87.5	88.3	86.6	89.9	90.5	88.5	90.3								
10-year	77.7	80.7	85.7	87.3	87.1	87.2	87.9	86.6	89.8	90.0	88.5									
11-year	77.2	80.5	85.2	87.0	87.0	86.9	87.7	86.5	89.6	89.6										
12-year	76.8	80.4	85.0	87.0	86.6	86.8	87.7	86.2	89.6											
13-year	76.6	80.1	84.9	87.0	86.5	86.6	87.7	85.9												
14-year	76.3	80.0	84.7	86.9	85.9	86.6	87.6													
15-year	76.1	79.9	84.7	86.4	85.5	86.6														
16-year	75.9	79.9	84.7	86.4	85.2															
17-year	75.9	79.7	84.7	86.4																
18-year	75.8	79.7	84.7																	
19-year	75.8	79.7																		
20-year	75.8	79.7																		

^a Based on the SEER 9 areas (San Francisco, Connecticut, Detroit, Hawaii, Iowa, New Mexico, Seattle, Utah, and Atlanta).

Table 16.10
Melanoma of the Skin (Invasive)

SEER^a Relative Survival (Percent)
By Year of Diagnosis

All Races, Males

Year of Diagnosis

	1975- 1979	1980- 1984	1985- 1989	1990	1991	1992	1993	1994	1995	1996	1997	1998	1999	2000	2001	2002	2003	2004	2005	2006
Survival Time																				
1-year	92.8	94.4	95.5	95.9	96.1	96.0	96.3	96.9	96.5	96.8	96.5	96.4	97.3	97.5	96.6	97.1	97.1	97.6	97.8	97.3
2-year	86.9	89.0	91.6	92.0	93.2	92.9	93.5	92.5	92.3	94.4	93.7	94.0	94.5	95.5	94.0	94.3	95.0	95.8	95.8	
3-year	82.7	84.5	88.5	89.8	90.8	90.4	91.0	89.7	90.1	92.3	91.1	92.1	92.6	93.8	91.7	92.7	93.5	93.1		
4-year	79.4	81.6	86.6	87.7	89.4	87.7	89.4	87.9	88.4	91.4	90.3	90.6	91.4	92.2	90.2	91.1	91.9			
5-year	78.1	79.0	84.8	86.6	88.3	86.5	88.7	86.9	86.9	90.5	88.7	90.3	90.5	91.3	89.5	90.5				
6-year	76.1	77.9	83.6	85.3	87.1	85.6	87.7	86.1	86.7	89.6	87.8	89.8	89.2	90.4	88.6					
7-year	74.5	77.4	82.6	85.1	86.1	85.4	85.8	85.2	86.7	89.4	87.8	89.8	89.2	90.4						
8-year	73.3	76.8	82.1	84.5	85.2	85.2	85.4	83.6	86.5	88.9	86.9	89.6	89.0							
9-year	72.6	76.0	81.7	84.5	84.6	84.4	85.1	83.3	86.2	88.3	86.6	89.1								
10-year	72.0	75.7	81.7	84.4	84.6	84.3	84.3	83.2	86.1	87.8	86.5									
11-year	71.2	75.4	81.5	84.0	84.6	83.9	83.7	83.1	86.1	87.5										
12-year	70.6	75.3	81.3	84.0	84.6	83.6	83.5	82.5	86.1											
13-year	70.4	75.1	81.2	84.0	84.6	83.4	83.5	82.4												
14-year	70.4	74.8	80.6	83.2	84.6	83.1	83.1													
15-year	70.1	74.8	80.5	82.5	84.5	83.1														
16-year	69.8	74.8	80.2	82.5	84.1															
17-year	69.7	74.8	80.2	82.3																
18-year	69.6	74.8	80.2																	
19-year	69.6	74.8																		
20-year	69.6	74.8																		

^a Based on the SEER 9 areas (San Francisco, Connecticut, Detroit, Hawaii, Iowa, New Mexico, Seattle, Utah, and Atlanta).

Table 16.11
Melanoma of the Skin (Invasive)

SEER^a Relative Survival (Percent)
By Year of Diagnosis

All Races, Females

Year of Diagnosis

	1975- 1979	1980- 1984	1985- 1989	1990	1991	1992	1993	1994	1995	1996	1997	1998	1999	2000	2001	2002	2003	2004	2005	2006
Survival Time																				
1-year	96.4	97.5	97.7	97.5	98.4	96.7	97.7	97.4	98.6	98.8	97.4	97.3	98.3	98.5	98.5	99.1	98.9	97.9	98.3	98.2
2-year	93.3	94.9	95.4	95.9	95.5	94.9	95.7	95.8	97.0	97.5	95.6	95.5	97.1	97.1	97.7	97.1	97.8	96.9	96.8	
3-year	90.2	92.1	93.6	94.3	93.6	93.3	94.6	94.3	96.0	96.2	94.2	93.9	96.0	95.9	97.3	96.4	96.7	96.5		
4-year	88.3	90.0	92.5	93.0	92.5	92.2	92.8	92.8	95.1	95.4	93.3	93.1	95.7	94.8	96.4	95.9	95.8			
5-year	86.9	88.9	91.7	92.9	91.7	91.7	92.4	91.7	94.3	94.7	92.6	92.5	95.2	93.7	95.9	95.7				
6-year	85.6	87.9	90.8	92.4	90.7	91.7	92.2	90.7	94.3	94.0	92.4	92.0	95.1	93.7	95.4					
7-year	84.8	87.1	90.3	91.6	90.2	91.2	92.2	90.7	94.3	93.6	91.5	91.7	95.0	93.2						
8-year	84.0	86.5	89.8	90.8	89.7	90.5	92.0	90.7	94.3	93.6	90.8	91.3	94.7							
9-year	83.4	86.1	89.6	90.5	89.6	90.5	91.8	90.5	93.9	93.1	90.7	91.3								
10-year	82.9	85.5	89.6	90.2	89.6	90.3	91.8	90.4	93.8	92.5	90.7									
11-year	82.7	85.3	88.9	89.8	88.9	90.2	91.8	90.4	92.7	92.1										
12-year	82.3	85.2	88.7	89.8	88.2	90.2	91.8	90.3	92.7											
13-year	82.1	84.8	88.5	89.8	88.0	89.8	91.8	89.7												
14-year	81.7	84.8	88.5	89.8	86.5	89.8	91.8													
15-year	81.4	84.5	88.5	89.8	86.4	89.8														
16-year	81.2	84.3	88.5	89.8	86.4															
17-year	81.2	84.2	88.5	89.8																
18-year	81.1	84.0	88.5																	
19-year	81.1	84.0																		
20-year	81.1	84.0																		

^a Based on the SEER 9 areas (San Francisco, Connecticut, Detroit, Hawaii, Iowa, New Mexico, Seattle, Utah, and Atlanta).

Table 16.12
Melanoma of the Skin (Invasive)

Risk of Being Diagnosed With Cancer in 10, 20 and 30 Years,
Lifetime Risk of Being Diagnosed with Cancer Given Alive and Cancer-Free at Current Age, and
Lifetime Risk of Dying from Cancer Given Alive at Current Age
Both Sexes, 2005-2007 By Race/Ethnicity

Race/ Ethnicity	Current Age	Risk of Being Diagnosed with Cancer				Risk of Dying from Cancer	Race/ Ethnicity	Current Age	Risk of Being Diagnosed with Cancer				Risk of Dying from Cancer
		+10 yrs	+20 yrs	+30 yrs	Ever				+10 yrs	+20 yrs	+30 yrs	Ever	
All Races	0	0.00	0.01	0.07	1.93	0.30	Asian/ Pacific Islander	0	0.00	0.00	0.00	0.16	0.07
	10	0.01	0.07	0.18	1.95	0.30		10	0.00	0.00	0.01	0.16	0.07
	20	0.06	0.17	0.36	1.95	0.30		20	0.00	0.01	0.02	0.16	0.07
	30	0.11	0.31	0.61	1.91	0.30		30	0.01	0.02	0.04	0.16	0.07
	40	0.20	0.50	0.93	1.83	0.30		40	0.01	0.03	0.06	0.15	0.07
	50	0.32	0.76	1.25	1.68	0.29		50	0.02	0.05	0.09	0.14	0.06
	60	0.47	1.00	1.36	1.45	0.27		60	0.03	0.07	0.11	0.12	0.06
	70	0.61	1.02	-	1.12	0.23		70	0.04	0.08	-	0.10	0.05
80	0.58	-	-	0.71	0.17	80	0.05	-	-	0.07	0.05		
White	0	0.00	0.01	0.08	2.24	0.34	American Indian/ Alaska Native ^a	0	0.00	0.00	0.02	0.36	0.13
	10	0.01	0.08	0.22	2.27	0.34		10	0.00	0.02	0.04	0.36	0.13
	20	0.07	0.20	0.43	2.26	0.34		20	0.02	0.04	0.07	0.36	0.13
	30	0.14	0.37	0.72	2.21	0.34		30	0.02	0.06	0.12	0.35	0.13
	40	0.24	0.59	1.10	2.11	0.34		40	0.04	0.10	0.15	0.34	0.13
	50	0.37	0.89	1.46	1.92	0.33		50	0.06	0.11	0.22	0.32	0.13
	60	0.55	1.16	1.56	1.65	0.30		60	0.05	0.16	0.27	0.27	0.12
	70	0.70	1.16	-	1.26	0.25		70	0.13	0.25	-	0.25	0.11
80	0.64	-	-	0.78	0.19	80	0.17	-	-	0.17	0.12		
Black	0	0.00	0.00	0.00	0.09	0.04	Hispanic ^b	0	0.00	0.00	0.01	0.48	0.11
	10	0.00	0.00	0.01	0.09	0.05		10	0.00	0.01	0.04	0.48	0.11
	20	0.00	0.01	0.01	0.09	0.05		20	0.01	0.03	0.07	0.48	0.11
	30	0.01	0.01	0.02	0.09	0.05		30	0.02	0.07	0.13	0.48	0.11
	40	0.01	0.02	0.04	0.08	0.05		40	0.04	0.10	0.19	0.46	0.11
	50	0.01	0.03	0.06	0.08	0.05		50	0.06	0.16	0.27	0.43	0.11
	60	0.02	0.05	0.07	0.08	0.05		60	0.10	0.22	0.32	0.38	0.10
	70	0.04	0.06	-	0.07	0.05		70	0.14	0.25	-	0.32	0.09
80	0.04	-	-	0.05	0.04	80	0.15	-	-	0.24	0.08		

Devcan Version 6.5.0, June 2010, National Cancer Institute (<http://srab.cancer.gov/devcan/>).

Source: Incidence data are from the SEER 17 areas (San Francisco, Connecticut, Detroit, Hawaii, Iowa, New Mexico, Seattle, Utah, Atlanta, San Jose-Monterey, Los Angeles, Alaska Native Registry, Rural Georgia, California excluding SF/SJM/LA, Kentucky, Louisiana and New Jersey). Mortality data are from the NCHS public use data file for the total US.

^a Underlying incidence and mortality data for American Indian/Alaska Native are based on the CHSDA (Contract Health Service Delivery Area) counties.

^b Hispanic is not mutually exclusive from whites, blacks, Asian/Pacific Islanders, and American Indians/Alaska Natives.

Underlying incidence data for Hispanics are based on NHIA and exclude cases from the Alaska Native Registry.

Underlying mortality data for Hispanics exclude deaths from the District of Columbia, Minnesota, New Hampshire and North Dakota.

- Statistic could not be calculated.

A percent of 0.00 represents a value that is below 0.005.

Table 16.13
Melanoma of the Skin (Invasive)

Risk of Being Diagnosed With Cancer in 10, 20 and 30 Years,
Lifetime Risk of Being Diagnosed with Cancer Given Alive and Cancer-Free at Current Age, and
Lifetime Risk of Dying from Cancer Given Alive at Current Age
Males, 2005-2007 By Race/Ethnicity

Race/ Ethnicity	Current Age	Risk of Being Diagnosed with Cancer				Risk of Dying from Cancer	Race/ Ethnicity	Current Age	Risk of Being Diagnosed with Cancer				Risk of Dying from Cancer
		+10 yrs	+20 yrs	+30 yrs	Ever				+10 yrs	+20 yrs	+30 yrs	Ever	
All Races	0	0.00	0.01	0.05	2.36	0.40	Asian/ Pacific Islander	0	0.00	0.00	0.00	0.18	0.07
	10	0.01	0.04	0.13	2.39	0.41		10	0.00	0.00	0.01	0.18	0.07
	20	0.04	0.12	0.30	2.40	0.41		20	0.00	0.01	0.02	0.18	0.07
	30	0.08	0.27	0.62	2.40	0.41		30	0.00	0.02	0.04	0.18	0.07
	40	0.19	0.55	1.11	2.35	0.41		40	0.01	0.03	0.07	0.17	0.07
	50	0.37	0.96	1.66	2.24	0.40		50	0.02	0.06	0.10	0.16	0.07
	60	0.64	1.39	1.91	2.02	0.38		60	0.04	0.09	0.13	0.15	0.07
	70	0.90	1.50	-	1.64	0.34		70	0.05	0.10	-	0.12	0.06
80	0.91	-	-	1.12	0.27	80	0.07	-	-	0.09	0.05		
White	0	0.00	0.01	0.05	2.73	0.46	American Indian/ Alaska Native ^a	0	0.00	0.00	0.00	0.34	0.17
	10	0.01	0.05	0.15	2.76	0.46		10	0.00	0.00	0.02	0.34	0.17
	20	0.04	0.15	0.36	2.77	0.47		20	0.00	0.02	0.04	0.35	0.17
	30	0.10	0.32	0.73	2.76	0.47		30	0.02	0.04	0.07	0.35	0.17
	40	0.22	0.64	1.30	2.70	0.46		40	0.02	0.05	0.10	0.34	0.17
	50	0.43	1.11	1.92	2.57	0.45		50	0.04	0.09	0.25	0.35	0.17
	60	0.74	1.61	2.18	2.31	0.42		60	0.06	0.23	0.34	0.34	0.16
	70	1.03	1.71	-	1.85	0.37		70	0.20	0.34	-	0.34	0.14
80	1.02	-	-	1.24	0.29	80	0.19	-	-	0.19	0.18		
Black	0	0.00	0.00	0.00	0.08	0.04	Hispanic ^b	0	0.00	0.00	0.01	0.48	0.13
	10	0.00	0.00	0.01	0.08	0.05		10	0.00	0.01	0.02	0.49	0.14
	20	0.00	0.00	0.01	0.08	0.05		20	0.00	0.02	0.05	0.49	0.14
	30	0.00	0.01	0.02	0.08	0.05		30	0.01	0.04	0.10	0.49	0.14
	40	0.00	0.01	0.04	0.08	0.05		40	0.03	0.08	0.17	0.48	0.14
	50	0.01	0.04	0.07	0.08	0.05		50	0.06	0.14	0.28	0.47	0.14
	60	0.03	0.06	0.08	0.08	0.05		60	0.10	0.24	0.36	0.44	0.13
	70	0.04	0.06	-	0.07	0.05		70	0.17	0.31	-	0.39	0.12
80	0.04	-	-	0.05	0.05	80	0.20	-	-	0.31	0.11		

Devcan Version 6.5.0, June 2010, National Cancer Institute (<http://srab.cancer.gov/devcan/>).

Source: Incidence data are from the SEER 17 areas (San Francisco, Connecticut, Detroit, Hawaii, Iowa, New Mexico, Seattle, Utah, Atlanta, San Jose-Monterey, Los Angeles, Alaska Native Registry, Rural Georgia, California excluding SF/SJM/LA, Kentucky, Louisiana and New Jersey). Mortality data are from the NCHS public use data file for the total US.

^a Underlying incidence and mortality data for American Indian/Alaska Native are based on the CHSDA (Contract Health Service Delivery Area) counties.

^b Hispanic is not mutually exclusive from whites, blacks, Asian/Pacific Islanders, and American Indians/Alaska Natives.

Underlying incidence data for Hispanics are based on NHIA and exclude cases from the Alaska Native Registry.

Underlying mortality data for Hispanics exclude deaths from the District of Columbia, Minnesota, New Hampshire and North Dakota.

- Statistic could not be calculated.

A percent of 0.00 represents a value that is below 0.005.

Table 16.14
Melanoma of the Skin (Invasive)

Risk of Being Diagnosed With Cancer in 10, 20 and 30 Years,
Lifetime Risk of Being Diagnosed with Cancer Given Alive and Cancer-Free at Current Age, and
Lifetime Risk of Dying from Cancer Given Alive at Current Age
Females, 2005-2007 By Race/Ethnicity

Race/ Ethnicity	Current Age	Risk of Being Diagnosed with Cancer				Risk of Dying from Cancer	Race/ Ethnicity	Current Age	Risk of Being Diagnosed with Cancer				Risk of Dying from Cancer
		+10 yrs	+20 yrs	+30 yrs	Ever				+10 yrs	+20 yrs	+30 yrs	Ever	
All Races	0	0.00	0.02	0.09	1.56	0.21	Asian/ Pacific Islander	0	0.00	0.00	0.01	0.14	0.06
	10	0.01	0.09	0.23	1.58	0.21		10	0.00	0.00	0.01	0.14	0.06
	20	0.08	0.22	0.42	1.57	0.21		20	0.00	0.01	0.03	0.14	0.06
	30	0.14	0.35	0.60	1.50	0.21		30	0.01	0.02	0.04	0.14	0.06
	40	0.21	0.46	0.76	1.37	0.20		40	0.02	0.03	0.06	0.13	0.06
	50	0.26	0.57	0.89	1.19	0.19		50	0.02	0.04	0.08	0.12	0.06
	60	0.32	0.66	0.90	0.97	0.18		60	0.03	0.06	0.09	0.10	0.05
	70	0.38	0.65	-	0.73	0.15		70	0.04	0.07	-	0.08	0.05
80	0.36	-	-	0.46	0.11	80	0.04	-	-	0.05	0.04		
White	0	0.00	0.02	0.11	1.82	0.23	American Indian/ Alaska Native ^a	0	0.01	0.01	0.04	0.38	0.10
	10	0.02	0.11	0.28	1.84	0.24		10	0.00	0.03	0.05	0.38	0.10
	20	0.10	0.27	0.51	1.83	0.24		20	0.03	0.05	0.11	0.38	0.10
	30	0.17	0.42	0.72	1.74	0.23		30	0.02	0.08	0.16	0.35	0.10
	40	0.25	0.55	0.90	1.58	0.23		40	0.06	0.15	0.19	0.34	0.10
	50	0.31	0.67	1.04	1.36	0.22		50	0.09	0.13	0.19	0.29	0.10
	60	0.37	0.76	1.03	1.10	0.19		60	0.05	0.11	0.21	0.21	0.09
	70	0.43	0.73	-	0.81	0.16		70	0.07	0.18	-	0.18	0.08
80	0.39	-	-	0.50	0.12	80	0.15	-	-	0.16	0.09		
Black	0	0.00	0.00	0.00	0.09	0.05	Hispanic ^b	0	0.00	0.00	0.02	0.49	0.09
	10	0.00	0.00	0.01	0.09	0.05		10	0.00	0.02	0.05	0.50	0.09
	20	0.00	0.01	0.02	0.09	0.05		20	0.02	0.05	0.10	0.50	0.09
	30	0.01	0.01	0.02	0.09	0.05		30	0.03	0.09	0.16	0.48	0.09
	40	0.01	0.02	0.03	0.08	0.05		40	0.06	0.12	0.22	0.45	0.09
	50	0.01	0.02	0.05	0.08	0.05		50	0.07	0.17	0.27	0.40	0.09
	60	0.01	0.04	0.07	0.08	0.05		60	0.10	0.20	0.29	0.35	0.08
	70	0.04	0.06	-	0.07	0.05		70	0.11	0.20	-	0.27	0.08
80	0.04	-	-	0.05	0.04	80	0.11	-	-	0.19	0.06		

Devcan Version 6.5.0, June 2010, National Cancer Institute (<http://srab.cancer.gov/devcan/>).

Source: Incidence data are from the SEER 17 areas (San Francisco, Connecticut, Detroit, Hawaii, Iowa, New Mexico, Seattle, Utah, Atlanta, San Jose-Monterey, Los Angeles, Alaska Native Registry, Rural Georgia, California excluding SF/SJM/LA, Kentucky, Louisiana and New Jersey). Mortality data are from the NCHS public use data file for the total US.

^a Underlying incidence and mortality data for American Indian/Alaska Native are based on the CHSDA (Contract Health Service Delivery Area) counties.

^b Hispanic is not mutually exclusive from whites, blacks, Asian/Pacific Islanders, and American Indians/Alaska Natives.

Underlying incidence data for Hispanics are based on NHIA and exclude cases from the Alaska Native Registry.

Underlying mortality data for Hispanics exclude deaths from the District of Columbia, Minnesota, New Hampshire and North Dakota.

- Statistic could not be calculated.

A percent of 0.00 represents a value that is below 0.005.

Table 16.15
Melanoma of the Skin (Invasive)

SEER Incidence and U.S. Mortality
Age-Adjusted Rates and Trends^a
By Race/Ethnicity and Sex

SEER Incidence	SEER 17 Areas ^b			SEER 13 Areas ^b			SEER 9 Areas ^b		
	Rate 2003-2007			Trend 1998-2007 ^c			Trend 1998-2007 ^d		
	Rate per 100,000 persons			AAPC (%)			AAPC (%)		
RACE/ETHNICITY	Total	Males	Females	Total	Males	Females	Total	Males	Females
All Races	20.1	25.6	16.2	1.6*	1.7*	1.5*	2.6*	2.0*	2.3*
White	23.5	29.7	19.1	2.6*	2.6*	2.0*	2.1*	2.2*	2.3*
White Hispanic ^e	4.5	4.4	4.8	-0.8	1.3	0.7	-	-	-
White Non-Hispanic ^e	27.4	34.3	22.6	3.1*	3.1*	3.2*	-	-	-
Black	1.0	1.1	1.0	-3.5*	-	-	-0.3	0.2	-0.7
Asian/Pacific Islander	1.4	1.6	1.3	1.4	1.6	1.4	-	-	-
Amer Ind/Alaska Nat ^f	3.8	4.1	3.7	-	-	-	-	-	-
Hispanic ^e	4.5	4.4	4.7	-1.0	1.1	0.6	-	-	-
<u>U.S. Mortality^g</u>									
RACE/ETHNICITY	Rate 2003-2007			Trend 1998-2007 ^h					
	Rate per 100,000 persons			AAPC (%)					
	Total	Males	Females	Total	Males	Females			
All Races	2.7	4.0	1.7	-0.1	0.2	-0.6*			
White	3.1	4.5	2.0	0.1	0.3*	-0.4*			
White Hispanic ^e	0.8	1.0	0.6	-0.6	-0.3	-0.9			
White Non-Hispanic ^e	3.3	4.8	2.1	0.3*	0.5*	-0.2			
Black	0.4	0.5	0.4	-0.9	0.4	-1.7			
Asian/Pacific Islander	0.4	0.4	0.3	-0.6	-	-			
Amer Ind/Alaska Nat									
Total U.S.	0.8	1.1	0.6	-	-	-			
CHSDA Counties	1.1	1.6	0.8	-	-	-			
Non-CHSDA Counties	0.5	-	-	-	-	-			
Hispanic ^e	0.7	1.0	0.6	-0.5	-0.4	-0.7			

The AAPC is the Average Annual Percent Change over the time interval. The AAPCs are calculated by the Joinpoint Regression Program Version 3.4.3, April 2010, National Cancer Institute.

- Statistic not shown. Rate based on less than 16 cases for the time interval.

Trend based on less than 10 cases for at least one year within the time interval.

a Rates are age-adjusted to the 2000 US Std Population (19 age groups - Census P25-1130). Trends

are based on rates age-adjusted to the 2000 US Std Population (19 age groups - Census P25-1130).

b The SEER 9 areas are San Francisco, Connecticut, Detroit, Hawaii, Iowa, New Mexico, Seattle, Utah and Atlanta.

The SEER 13 areas comprise the SEER 9 areas plus San Jose-Monterey, Los Angeles, the Alaska Native Registry and Rural Georgia.

The SEER 17 areas comprise the SEER 13 areas plus California excluding SF/SJM/LA, Kentucky, Louisiana and New Jersey.

c The 1998-2007 AAPC estimates are based on a Joinpoint analysis with up to 2 Joinpoints over diagnosis years 1992-2007.

d The 1998-2007 AAPC estimates are based on a Joinpoint analysis with up to 4 Joinpoints over diagnosis years 1975-2007.

e Hispanic and Non-Hispanic are not mutually exclusive from whites, blacks, Asian/Pacific Islanders, and American Indians/Alaska Natives. Incidence data for Hispanics and Non-Hispanics are based on NHIA and exclude cases from the Alaska Native Registry. The 2003-2007 Hispanic and Non-Hispanic death rates exclude deaths from the District of Columbia, New Hampshire, and North Dakota. The 1998-2007 Hispanic and Non-Hispanic mortality trends exclude deaths from Connecticut, the District of Columbia, Maine, Maryland, Minnesota, New Hampshire, New York, North Dakota, Oklahoma and Vermont.

f Incidence data for American Indian/Alaska Native are based on the CHSDA(Contract Health Service Delivery Area) counties.

g US Mortality Files, National Center for Health Statistics, CDC.

h The 1998-2007 mortality AAPCs are based on a Joinpoint analysis using years of death 1992-2007.

* The APC is significantly different from zero (p<.05).

Table 16.16
Melanoma of the Skin (Invasive)

Age-Adjusted SEER Incidence Rates^a
By Registry, Race and Sex

	All Races			Whites			Blacks		
	Total	Males	Females	Total	Males	Females	Total	Males	Females
<u>SEER Incidence Rates^a, 2003-2007</u>									
Atlanta & Rural Georgia	22.46	30.23	17.29	33.46	42.50	27.52	1.10	1.31	1.01
Atlanta	22.68	30.44	17.55	33.67	42.67	27.84	1.16	1.37	1.08
Rural Georgia	18.12	25.85	12.32	28.32	37.44	20.99	-	-	-
California	19.66	25.69	15.28	22.76	29.67	17.68	1.00	1.01	0.99
Greater Bay Area	17.71	22.76	14.20	23.45	29.92	18.97	0.92	-	-
San Francisco-Oakland	17.51	22.45	14.05	23.92	30.53	19.26	0.89	-	-
San Jose-Monterey	18.14	23.43	14.47	22.65	28.91	18.42	-	-	-
Los Angeles	14.02	19.23	10.30	18.23	24.86	13.46	0.76	0.84	0.69
Greater California	23.17	29.84	18.22	24.50	31.62	19.16	1.38	1.16	1.51
Connecticut	23.93	29.88	19.92	25.77	31.81	21.71	1.60	-	-
Detroit	15.84	19.71	13.37	20.59	24.76	18.11	0.69	-	0.78
Hawaii	19.48	25.30	14.74	65.21	82.82	50.03	-	-	-
Iowa	18.33	21.52	16.37	17.79	20.96	15.84	-	-	-
Kentucky	21.66	26.70	18.35	22.16	27.62	18.50	-	-	-
Louisiana	12.78	17.48	9.49	17.19	22.85	13.14	1.08	1.27	1.01
New Jersey	20.98	26.48	17.33	24.16	29.98	20.33	1.21	1.29	1.20
New Mexico	16.90	21.30	13.43	18.60	23.19	14.96	-	-	-
Seattle-Puget Sound	26.44	30.64	23.71	30.23	34.51	27.52	-	-	-
Utah	26.86	34.40	20.94	27.93	35.64	21.87	-	-	-
9 SEER Areas ^b	20.80	25.83	17.32	25.33	30.94	21.49	0.95	1.01	0.92
11 SEER Areas ^b	19.06	24.18	15.48	23.55	29.47	19.44	0.90	0.97	0.86
13 SEER Areas ^b	19.02	24.14	15.44	23.56	29.49	19.44	0.89	0.96	0.85
17 SEER Areas ^b	20.08	25.63	16.18	23.47	29.67	19.11	1.03	1.11	0.99

^a Rates are per 100,000 and are age-adjusted to the 2000 US Std Population (19 age groups - Census P25-1130)

^b The SEER 9 areas are San Francisco, Connecticut, Detroit, Hawaii, Iowa, New Mexico, Seattle, Utah and Atlanta.

The SEER 11 areas comprise the SEER 9 areas plus San Jose-Monterey and Los Angeles.

The SEER 13 areas comprise the SEER 11 areas plus the Alaska Native Registry and Rural Georgia.

The SEER 17 areas comprise the SEER 13 areas plus California excluding SF/SJM/LA, Kentucky, Louisiana and New Jersey.

- Statistic not shown. Rate based on less than 16 cases for the time interval.

Table 16.17
Melanoma of the Skin (Invasive)

Age-Adjusted SEER Death Rates^a
By Registry, Race and Sex

	All Races			Whites			Blacks		
	Total	Males	Females	Total	Males	Females	Total	Males	Females
<u>SEER Death Rates^a, 2003-2007</u>									
Atlanta & Rural Georgia	1.99	3.13	1.25	2.75	4.18	1.78	-	-	-
Atlanta	2.03	3.21	1.27	2.78	4.25	1.79	-	-	-
Rural Georgia	-	-	-	-	-	-	-	-	-
California	2.56	3.91	1.55	3.10	4.70	1.87	0.34	-	0.33
Greater Bay Area	2.46	3.78	1.52	3.32	5.10	2.04	-	-	-
San Francisco-Oakland	2.38	3.71	1.46	3.33	5.16	2.01	-	-	-
San Jose-Monterey	2.60	3.93	1.64	3.30	4.95	2.11	-	-	-
Los Angeles	1.84	2.85	1.10	2.37	3.66	1.41	-	-	-
Greater California	2.95	4.46	1.78	3.34	5.02	2.01	-	-	-
Connecticut	2.86	4.32	1.82	3.08	4.59	2.01	-	-	-
Detroit	1.86	3.02	1.06	2.30	3.71	1.30	-	-	-
Hawaii	1.73	2.46	1.09	4.57	6.55	2.66	-	-	-
Iowa	2.42	3.31	1.69	2.49	3.40	1.74	-	-	-
Kentucky	3.27	4.87	2.07	3.46	5.15	2.18	-	-	-
Louisiana	2.09	3.26	1.22	2.66	4.10	1.55	0.52	0.78	-
New Jersey	2.68	3.99	1.74	3.11	4.56	2.03	0.42	-	-
New Mexico	2.73	3.74	1.96	2.95	4.00	2.15	-	-	-
Seattle-Puget Sound	3.03	4.42	1.93	3.37	4.86	2.18	-	-	-
Utah	3.38	5.12	1.92	3.51	5.32	1.99	-	-	-
9 SEER Areas ^b	2.48	3.72	1.56	2.97	4.42	1.88	0.43	0.64	0.30
11 SEER Areas ^b	2.34	3.53	1.46	2.86	4.28	1.79	0.39	0.55	0.29
13 SEER Areas ^b	2.34	3.52	1.46	2.86	4.27	1.79	0.38	0.54	0.28
17 SEER Areas ^b	2.57	3.87	1.60	3.04	4.54	1.89	0.41	0.59	0.31
Total U.S.	2.69	3.98	1.73	3.06	4.50	1.97	0.45	0.52	0.41

^a US Mortality Files, National Center for Health Statistics, Centers for Disease Control and Prevention.
Rates are per 100,000 and are age-adjusted to the 2000 US Std Population (19 age groups - Census P25-1130).

^b The SEER 9 areas are San Francisco, Connecticut, Detroit, Hawaii, Iowa, New Mexico, Seattle, Utah and Atlanta.
The SEER 11 areas comprise the SEER 9 areas plus San Jose-Monterey and Los Angeles.
The SEER 13 areas comprise the SEER 11 areas plus the Alaska Native Registry and Rural Georgia.
The SEER 17 areas comprise the SEER 13 areas plus California excluding SF/SJM/LA, Kentucky, Louisiana and New Jersey.
- Statistic not shown. Rate based on less than 16 cases for the time interval.

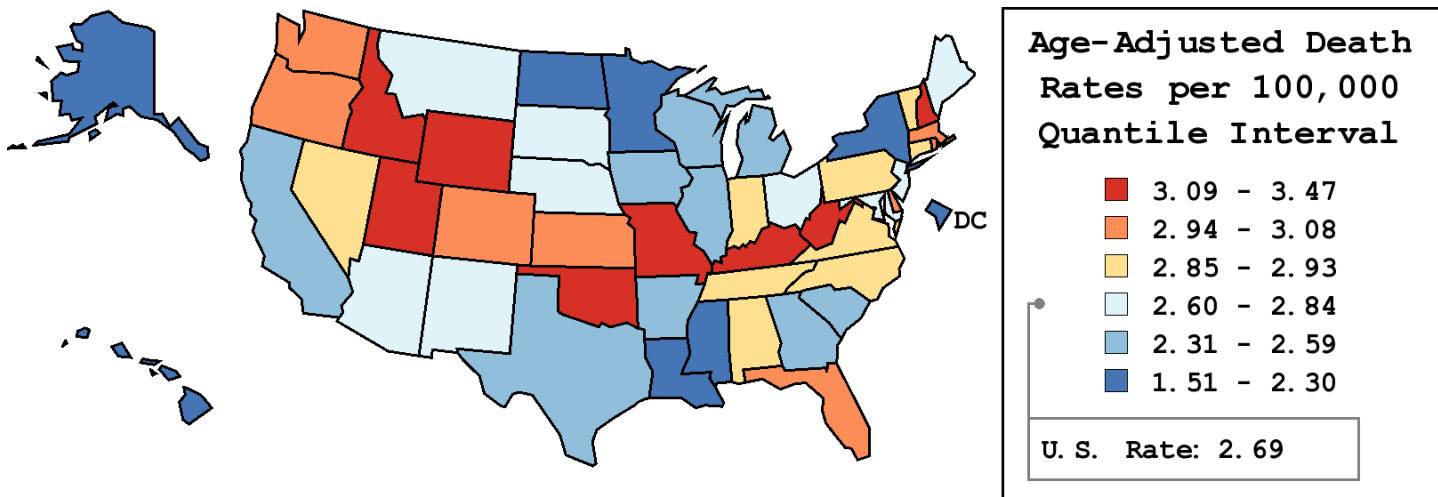
Table 16.18
Melanoma of the Skin (Invasive)

Age-Adjusted Cancer Death^a Rates By State, All Races, 2003-2007

Males and Females

State	Rate	SE	Rank	PD
TOTAL U.S.	2.69	0.01		
High Five States				
Oklahoma	3.47 ^b	0.14	(01)	28.75 ^c
Utah	3.38 ^b	0.19	(02)	25.39 ^c
Wyoming	3.34	0.36	(03)	24.05 ^c
Kentucky	3.27 ^b	0.12	(04)	21.52 ^c
Idaho	3.24	0.22	(05)	20.48 ^c
Low Five States				
Louisiana	2.09 ^b	0.10	(47)	-22.38 ^c
Alaska	2.01	0.30	(48)	-25.34 ^c
North Dakota	1.74 ^b	0.22	(49)	-35.26 ^c
Hawaii	1.73 ^b	0.16	(50)	-35.70 ^c
D.C.	1.51 ^b	0.22	(51)	-43.97 ^c

State	Rate	SE	Rank	PD	State	Rate	SE	Rank	PD
Alabama	2.85	0.11	(25)	5.99	Montana	2.84	0.24	(26)	5.66
Alaska	2.01	0.30	(48)	-25.34 ^c	Nebraska	2.70	0.17	(32)	0.12
Arizona	2.81	0.10	(28)	4.27	Nevada	2.92	0.16	(20)	8.63
Arkansas	2.59	0.13	(35)	-3.77	New Hampshire	3.10	0.21	(08)	15.19 ^c
California	2.56	0.04	(37)	-4.83	New Jersey	2.68	0.08	(33)	-0.38
Colorado	3.01	0.12	(13)	11.71	New Mexico	2.73	0.17	(30)	1.41
Connecticut	2.86	0.12	(24)	6.04	New York	2.18 ^b	0.05	(46)	-19.17 ^c
Delaware	3.08	0.26	(09)	14.45	North Carolina	2.93	0.08	(19)	8.76
D.C.	1.51 ^b	0.22	(51)	-43.97 ^c	North Dakota	1.74 ^b	0.22	(49)	-35.26 ^c
Florida	2.94 ^b	0.05	(16)	9.19	Ohio	2.63	0.07	(34)	-2.44
Georgia	2.44	0.08	(41)	-9.54	Oklahoma	3.47 ^b	0.14	(01)	28.75 ^c
Hawaii	1.73 ^b	0.16	(50)	-35.70 ^c	Oregon	3.06	0.13	(11)	13.48
Idaho	3.24	0.22	(05)	20.48 ^c	Pennsylvania	2.88	0.06	(22)	7.05
Illinois	2.55	0.06	(39)	-5.19	Rhode Island	2.97	0.22	(15)	10.41
Indiana	2.88	0.10	(23)	6.89	South Carolina	2.57	0.11	(36)	-4.52
Iowa	2.42	0.12	(42)	-9.98	South Dakota	2.80	0.26	(29)	3.90
Kansas	3.06	0.15	(10)	13.79	Tennessee	2.90	0.10	(21)	7.67
Kentucky	3.27 ^b	0.12	(04)	21.52 ^c	Texas	2.54	0.05	(40)	-5.57
Louisiana	2.09 ^b	0.10	(47)	-22.38 ^c	Utah	3.38 ^b	0.19	(02)	25.39 ^c
Maine	2.83	0.19	(27)	5.29	Vermont	2.93	0.29	(17)	8.80
Maryland	2.71	0.10	(31)	0.64	Virginia	2.93	0.09	(18)	8.77
Massachusetts	3.02 ^b	0.09	(12)	12.28	Washington	2.99	0.10	(14)	11.09
Michigan	2.39 ^b	0.07	(43)	-11.24	West Virginia	3.21	0.18	(06)	19.19 ^c
Minnesota	2.27 ^b	0.09	(45)	-15.74 ^c	Wisconsin	2.56	0.09	(38)	-4.99
Mississippi	2.30	0.13	(44)	-14.45	Wyoming	3.34	0.36	(03)	24.05 ^c
Missouri	3.12 ^b	0.10	(07)	15.74 ^c					



^a US Mortality Files, National Center for Health Statistics, Centers for Disease Control and Prevention. Rates are per 100,000 and are age-adjusted to the 2000 US Std Population (19 age groups - Census P25-1130).
^b Difference between state rate and total U.S. rate is statistically significant ($p \leq .0002$).
^c Absolute percent difference between state rate and total U.S. rate is 15% or more.
SE Standard error of the rate.
PD Percent difference between state rate and total U.S. rate.

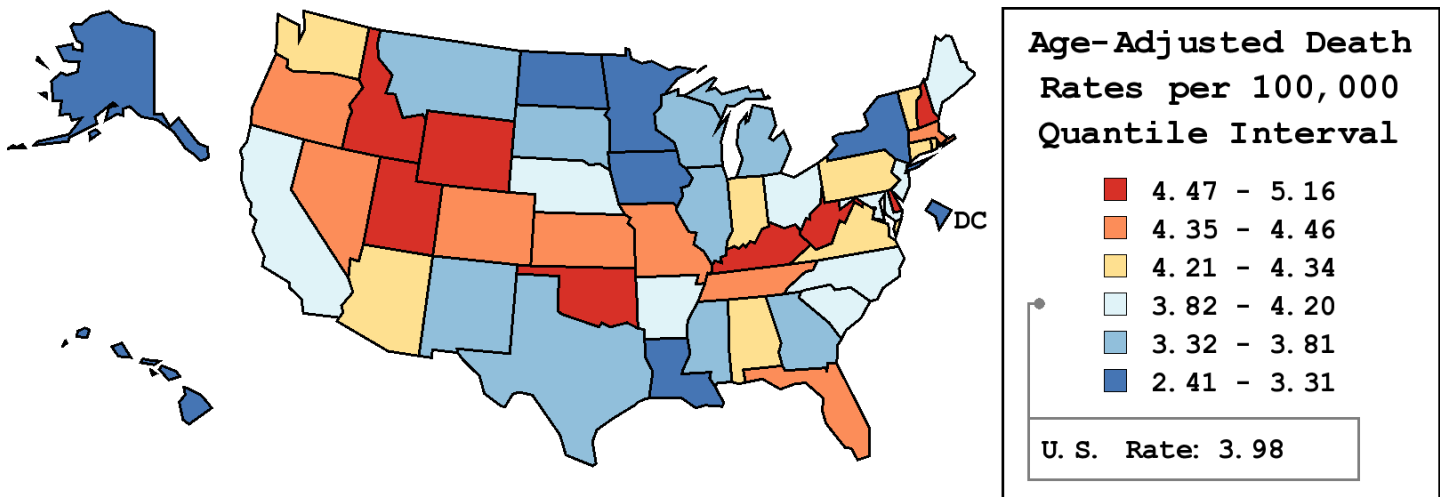
Table 16.19
Melanoma of the Skin (Invasive)

Age-Adjusted Cancer Death^a Rates By State, All Races, 2003-2007

Males

State	Rate	SE	Rank	PD
TOTAL U.S.	3.98	0.02		
High Five States				
Delaware	5.16	0.52	(01)	29.57 ^c
Utah	5.12	0.35	(02)	28.71 ^c
Oklahoma	5.03 ^b	0.25	(03)	26.43 ^c
Kentucky	4.87 ^b	0.23	(04)	22.43 ^c
Wyoming	4.76	0.65	(05)	19.52 ^c
Low Five States				
Minnesota	3.09 ^b	0.17	(47)	-22.36 ^c
North Dakota	2.50 ^b	0.39	(48)	-37.14 ^c
Alaska	2.49	0.47	(49)	-37.40 ^c
Hawaii	2.46 ^b	0.28	(50)	-38.17 ^c
D.C.	2.41	0.46	(51)	-39.50 ^c

State	Rate	SE	Rank	PD	State	Rate	SE	Rank	PD
Alabama	4.27	0.21	(23)	7.26	Montana	3.37	0.38	(43)	-15.34 ^c
Alaska	2.49	0.47	(49)	-37.40 ^c	Nebraska	3.92	0.31	(31)	-1.55
Arizona	4.30	0.18	(21)	8.12	Nevada	4.46	0.29	(09)	12.00
Arkansas	3.86	0.24	(34)	-3.05	New Hampshire	4.64	0.40	(07)	16.63 ^c
California	3.91	0.07	(32)	-1.81	New Jersey	3.99	0.14	(30)	0.12
Colorado	4.40	0.22	(14)	10.45	New Mexico	3.74	0.30	(36)	-6.06
Connecticut	4.32	0.23	(20)	8.45	New York	3.19 ^b	0.09	(46)	-19.96 ^c
Delaware	5.16	0.52	(01)	29.57 ^c	North Carolina	4.20	0.15	(26)	5.45
D.C.	2.41	0.46	(51)	-39.50 ^c	North Dakota	2.50 ^b	0.39	(48)	-37.14 ^c
Florida	4.38 ^b	0.09	(15)	9.98	Ohio	3.88	0.12	(33)	-2.53
Georgia	3.68	0.16	(37)	-7.52	Oklahoma	5.03 ^b	0.25	(03)	26.43 ^c
Hawaii	2.46 ^b	0.28	(50)	-38.17 ^c	Oregon	4.40	0.22	(12)	10.53
Idaho	4.75	0.39	(06)	19.34 ^c	Pennsylvania	4.26	0.12	(24)	7.14
Illinois	3.66	0.12	(38)	-8.12	Rhode Island	4.34	0.42	(18)	9.11
Indiana	4.32	0.18	(19)	8.53	South Carolina	3.99	0.21	(29)	0.21
Iowa	3.31	0.21	(44)	-16.72 ^c	South Dakota	3.58	0.43	(42)	-10.16
Kansas	4.43	0.27	(11)	11.31	Tennessee	4.36	0.18	(16)	9.53
Kentucky	4.87 ^b	0.23	(04)	22.43 ^c	Texas	3.81	0.10	(35)	-4.30
Louisiana	3.26 ^b	0.19	(45)	-18.20 ^c	Utah	5.12	0.35	(02)	28.71 ^c
Maine	4.06	0.35	(27)	1.90	Vermont	4.34	0.55	(17)	9.12
Maryland	4.05	0.19	(28)	1.76	Virginia	4.23	0.17	(25)	6.15
Massachusetts	4.40	0.17	(13)	10.48	Washington	4.27	0.18	(22)	7.27
Michigan	3.63	0.13	(40)	-8.69	West Virginia	4.63	0.32	(08)	16.23 ^c
Minnesota	3.09 ^b	0.17	(47)	-22.36 ^c	Wisconsin	3.59	0.17	(41)	-9.73
Mississippi	3.64	0.25	(39)	-8.55	Wyoming	4.76	0.65	(05)	19.52 ^c
Missouri	4.45	0.18	(10)	11.92					



^a US Mortality Files, National Center for Health Statistics, Centers for Disease Control and Prevention. Rates are per 100,000 and are age-adjusted to the 2000 US Std Population (19 age groups - Census P25-1130).
^b Difference between state rate and total U.S. rate is statistically significant ($p \leq .0002$).
^c Absolute percent difference between state rate and total U.S. rate is 15% or more.
SE Standard error of the rate.
PD Percent difference between state rate and total U.S. rate.

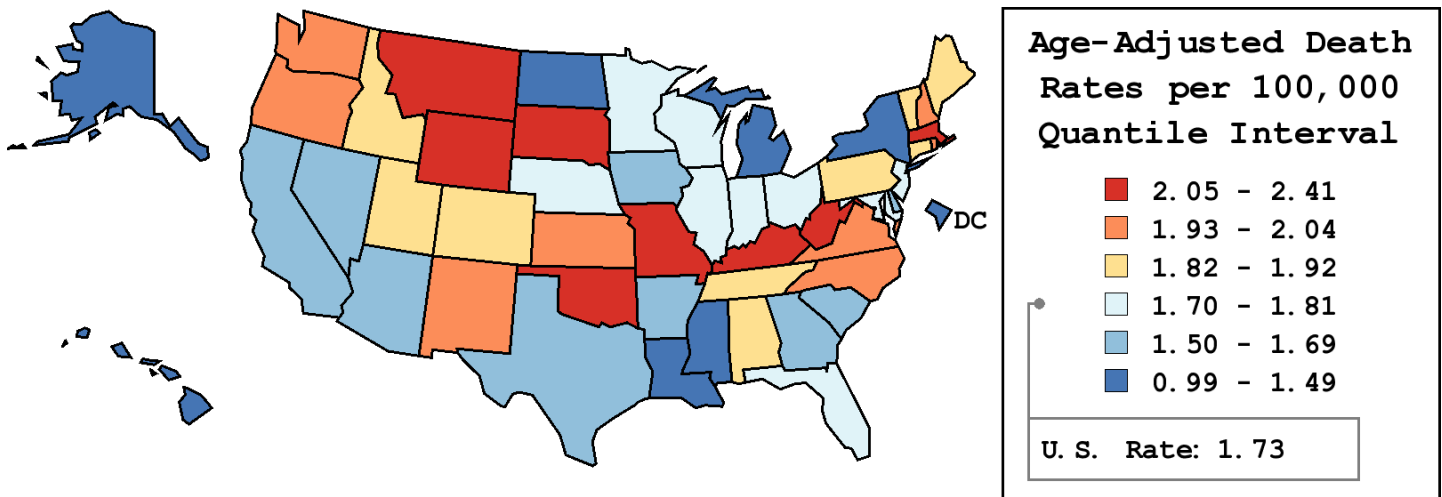
Table 16.20
Melanoma of the Skin (Invasive)

Age-Adjusted Cancer Death^a Rates By State, All Races, 2003-2007

Females

State	Rate	SE	Rank	PD
TOTAL U.S.	1.73	0.01		
High Five States				
Montana	2.41	0.30	(01)	39.43 ^c
Oklahoma	2.23	0.15	(02)	29.15 ^c
Wyoming	2.18	0.40	(03)	26.03 ^c
South Dakota	2.17	0.31	(04)	25.48 ^c
West Virginia	2.13	0.20	(05)	22.94 ^c
Low Five States				
Mississippi	1.35	0.13	(47)	-21.84 ^c
Louisiana	1.22 ^b	0.10	(48)	-29.50 ^c
Hawaii	1.09 ^b	0.17	(49)	-36.67 ^c
North Dakota	1.09	0.24	(50)	-36.81 ^c
D.C.	0.99	0.24	(51)	-42.74 ^c

State	Rate	SE	Rank	PD	State	Rate	SE	Rank	PD
Alabama	1.82	0.12	(25)	5.26	Montana	2.41	0.30	(01)	39.43 ^c
Alaska	1.46	0.35	(46)	-15.39 ^c	Nebraska	1.80	0.19	(27)	3.88
Arizona	1.55	0.10	(41)	-10.47	Nevada	1.55	0.16	(40)	-10.19
Arkansas	1.56	0.14	(39)	-9.61	New Hampshire	1.93	0.23	(16)	11.48
California	1.55 ^b	0.04	(42)	-10.49	New Jersey	1.74	0.08	(31)	0.91
Colorado	1.91	0.13	(18)	10.72	New Mexico	1.96	0.19	(15)	13.09
Connecticut	1.82	0.13	(24)	5.54	New York	1.49 ^b	0.05	(44)	-14.03
Delaware	1.56	0.25	(38)	-9.60	North Carolina	2.03	0.09	(10)	17.56 ^c
D.C.	0.99	0.24	(51)	-42.74 ^c	North Dakota	1.09	0.24	(50)	-36.81 ^c
Florida	1.78	0.06	(28)	2.72	Ohio	1.72	0.07	(32)	-0.30
Georgia	1.57	0.08	(37)	-9.08	Oklahoma	2.23	0.15	(02)	29.15 ^c
Hawaii	1.09 ^b	0.17	(49)	-36.67 ^c	Oregon	1.97	0.14	(14)	13.87
Idaho	1.91	0.23	(20)	10.42	Pennsylvania	1.88	0.07	(21)	8.67
Illinois	1.75	0.07	(30)	1.04	Rhode Island	2.00	0.25	(12)	15.78 ^c
Indiana	1.81	0.10	(26)	4.67	South Carolina	1.52	0.11	(43)	-12.28
Iowa	1.69	0.14	(35)	-2.23	South Dakota	2.17	0.31	(04)	25.48 ^c
Kansas	2.04	0.16	(09)	18.15 ^c	Tennessee	1.83	0.10	(23)	6.04
Kentucky	2.07	0.13	(08)	19.56 ^c	Texas	1.60	0.05	(36)	-7.33
Louisiana	1.22 ^b	0.10	(48)	-29.50 ^c	Utah	1.92	0.19	(17)	10.87
Maine	1.91	0.22	(19)	10.69	Vermont	1.87	0.32	(22)	8.34
Maryland	1.76	0.11	(29)	1.85	Virginia	2.02	0.10	(11)	16.75 ^c
Massachusetts	2.07	0.10	(07)	19.80 ^c	Washington	1.98	0.11	(13)	14.49
Michigan	1.48 ^b	0.07	(45)	-14.56	West Virginia	2.13	0.20	(05)	22.94 ^c
Minnesota	1.70	0.11	(34)	-1.83	Wisconsin	1.72	0.10	(33)	-0.71
Mississippi	1.35	0.13	(47)	-21.84 ^c	Wyoming	2.18	0.40	(03)	26.03 ^c
Missouri	2.10	0.11	(06)	21.26 ^c					



^a US Mortality Files, National Center for Health Statistics, Centers for Disease Control and Prevention. Rates are per 100,000 and are age-adjusted to the 2000 US Std Population (19 age groups - Census P25-1130).
^b Difference between state rate and total U.S. rate is statistically significant ($p \leq .0002$).
^c Absolute percent difference between state rate and total U.S. rate is 15% or more.
SE Standard error of the rate.
PD Percent difference between state rate and total U.S. rate.

Table 16.21
Melanoma of the Skin (Invasive)

Estimated United States Cancer Prevalence Counts^a on January 1, 2007
By Race/Ethnicity, Sex and Years Since Diagnosis

Years Since Diagnosis		0 to <5	5 to <10	10 to <15	15 to <20	20 to <25	25 to <30	0 to <17 ^e	0 to <32 ^e	>=32 ^g	Complete ^h
<u>Race</u>	<u>Sex</u>										
All Races ^b	Both Sexes	242,029	177,259	124,403	90,820	63,982	42,033	583,389	751,279	42,004	793,283
	Males	127,243	90,751	62,112	42,063	27,714	16,942	299,272	371,049	14,005	385,054
	Females	114,786	86,508	62,291	48,757	36,268	25,091	284,117	380,230	27,999	408,229
White ^b	Both Sexes	233,368	171,359	119,209	87,317	60,938	40,688	562,233	722,928	39,698	762,626
	Males	123,001	87,802	59,552	40,846	26,393	16,310	288,984	357,863	13,356	371,219
	Females	110,367	83,557	59,657	46,471	34,545	24,378	273,249	365,065	26,342	391,407
Black ^b	Both Sexes	852	682	395	359	140	60	2,084	2,574	114	2,688
	Males	313	321	212	124	32	11	925	1,038	45	1,083
	Females	539	361	183	235	108	49	1,159	1,536	69	1,605
Asian/ Pacific Islander ^c	Both Sexes	645	426	225	+	+	+	1,345	+	+	+
	Males	313	171	103	+	+	+	595	+	+	+
	Females	332	255	122	+	+	+	750	+	+	+
Hispanic ^d	Both Sexes	4,076	3,066	1,958	+	+	+	9,786	+	+	+
	Males	1,647	1,139	708	+	+	+	3,723	+	+	+
	Females	2,429	1,927	1,250	+	+	+	6,063	+	+	+

Estimated prevalence percent^a on January 1, 2007, of the SEER 11 population diagnosed in the previous 17 years
By Age at Prevalence, Race/Ethnicity and Sex

Age at Prevalence		Age Specific (Crude)									Age-Adjusted ^f	
		All Ages	0-9	10-19	20-29	30-39	40-49	50-59	60-69	70-79	80+	All Ages
<u>Race</u>	<u>Sex</u>											
All Races ^c	Both Sexes	0.1523%	0.0004%	0.0034%	0.0307%	0.0906%	0.1749%	0.2766%	0.4034%	0.5014%	0.5019%	0.1515%
	Males	0.1603%	0.0004%	0.0031%	0.0198%	0.0628%	0.1510%	0.2952%	0.5112%	0.7141%	0.7798%	0.1739%
	Females	0.1444%	0.0004%	0.0038%	0.0426%	0.1192%	0.1988%	0.2589%	0.3059%	0.3359%	0.3469%	0.1371%
White ^c	Both Sexes	0.1923%	0.0004%	0.0043%	0.0392%	0.1161%	0.2188%	0.3424%	0.4873%	0.6097%	0.5853%	0.1858%
	Males	0.2009%	0.0005%	0.0038%	0.0246%	0.0781%	0.1859%	0.3605%	0.6090%	0.8580%	0.9198%	0.2097%
	Females	0.1836%	0.0004%	0.0048%	0.0553%	0.1569%	0.2529%	0.3245%	0.3741%	0.4119%	0.4006%	0.1714%
Black ^c	Both Sexes	0.0048%	-	-	0.0014%	0.0037%	0.0048%	0.0065%	0.0178%	0.0265%	0.0295%	0.0061%
	Males	0.0044%	-	-	-	0.0015%	0.0042%	0.0053%	0.0212%	0.0424%	0.0397%	0.0071%
	Females	0.0051%	-	-	0.0023%	0.0056%	0.0053%	0.0075%	0.0152%	0.0158%	0.0245%	0.0057%
Asian/ Pacific Islander ^c	Both Sexes	0.0098%	-	0.0011%	0.0024%	0.0068%	0.0115%	0.0146%	0.0266%	0.0251%	0.0414%	0.0098%
	Males	0.0092%	-	0.0018%	0.0027%	0.0043%	0.0086%	0.0144%	0.0297%	0.0353%	0.0447%	0.0100%
	Females	0.0103%	-	-	0.0021%	0.0091%	0.0141%	0.0149%	0.0240%	0.0176%	0.0393%	0.0097%
Hispanic ^d	Both Sexes	0.0207%	-	0.0008%	0.0045%	0.0166%	0.0363%	0.0571%	0.0787%	0.1057%	0.1379%	0.0319%
	Males	0.0152%	-	0.0009%	0.0026%	0.0076%	0.0236%	0.0424%	0.0694%	0.1222%	0.2027%	0.0293%
	Females	0.0265%	-	-	0.0068%	0.0270%	0.0499%	0.0711%	0.0866%	0.0937%	0.1001%	0.0360%

^a US 2007 cancer prevalence counts are based on 2007 cancer prevalence proportions from the SEER registries and 1/1/2007 US population estimates based on the average of 2006 and 2007 population estimates from the US Bureau of the Census. Prevalence was calculated using the First Malignant Primary Only for a person.

^{b c d} Statistics based on (b) SEER 9 Areas (c) SEER 11 Areas and Rural Georgia (d) NHIA for Hispanic for SEER 11 Areas and Rural Georgia.

^e Maximum limited-duration prevalence: 32 years for 1975-2007 SEER 9 data; 17 years for 1990-2007 SEER 11 data (used to calculate prevalence for Hispanics and Asian Pacific Islanders).

^f Percentages are age-adjusted to the 2000 US Standard Population (19 age groups - Census P25-1130) by 5-year age groups.

^{g h i} (g) Cases diagnosed more than 32 years ago were estimated using the completeness index method (Capocaccia et. al. 1997, Merrill et. al. 2000). (h) Complete prevalence is obtained by summing 0 to <32 and >=32. (i) Age-specific completeness index was approximated using empirical data from historical Connecticut tumor registry.

- Statistic not shown. Statistic based on fewer than 5 cases estimated alive in SEER for the time interval.

+ Not available.

SEER Observed Incidence, SEER Delay Adjusted Incidence and US Death Rates^a Melanoma of the Skin, White, by Sex

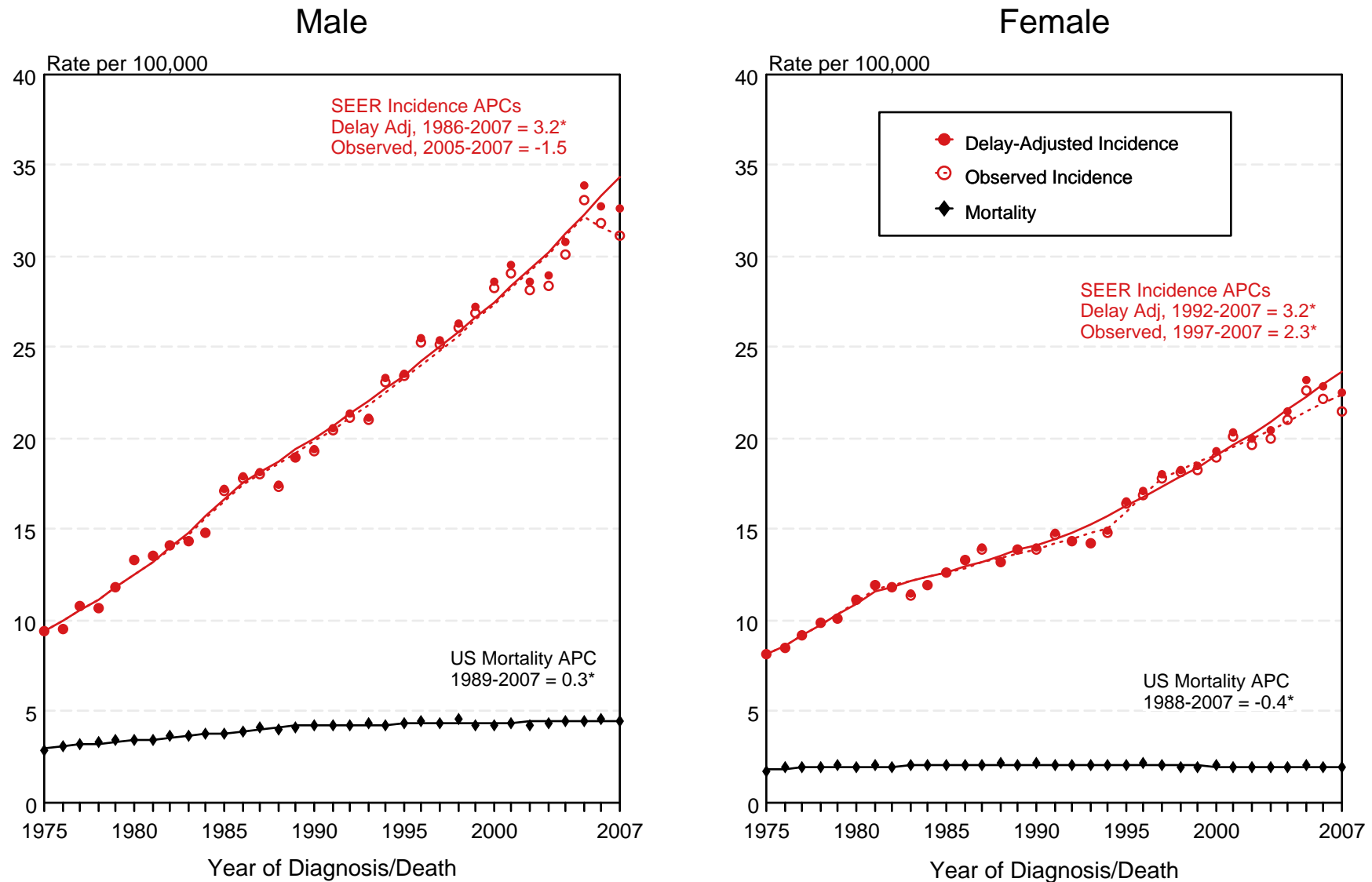


Figure 16.1

^a Source: SEER 9 areas and US Mortality Files (National Center for Health Statistics, CDC). Rates are age-adjusted to the 2000 US Std Population (19 age groups - Census P25-1103). Regression lines and APCs are calculated using the Joinpoint Regression Program Version 3.4.3, April 2010, National Cancer Institute. The APC is the Annual Percent Change for the regression line segments. The APC shown on the graph is for the most recent trend.

* The APC is significantly different from zero ($p < 0.05$).

SEER Incidence and US Death Rates^a Melanoma of the Skin, Both Sexes

Joinpoint Analyses for Whites and Blacks from 1975-2007

and for Asian/Pacific Islanders, American Indians/Alaska Natives and Hispanics from 1992-2007

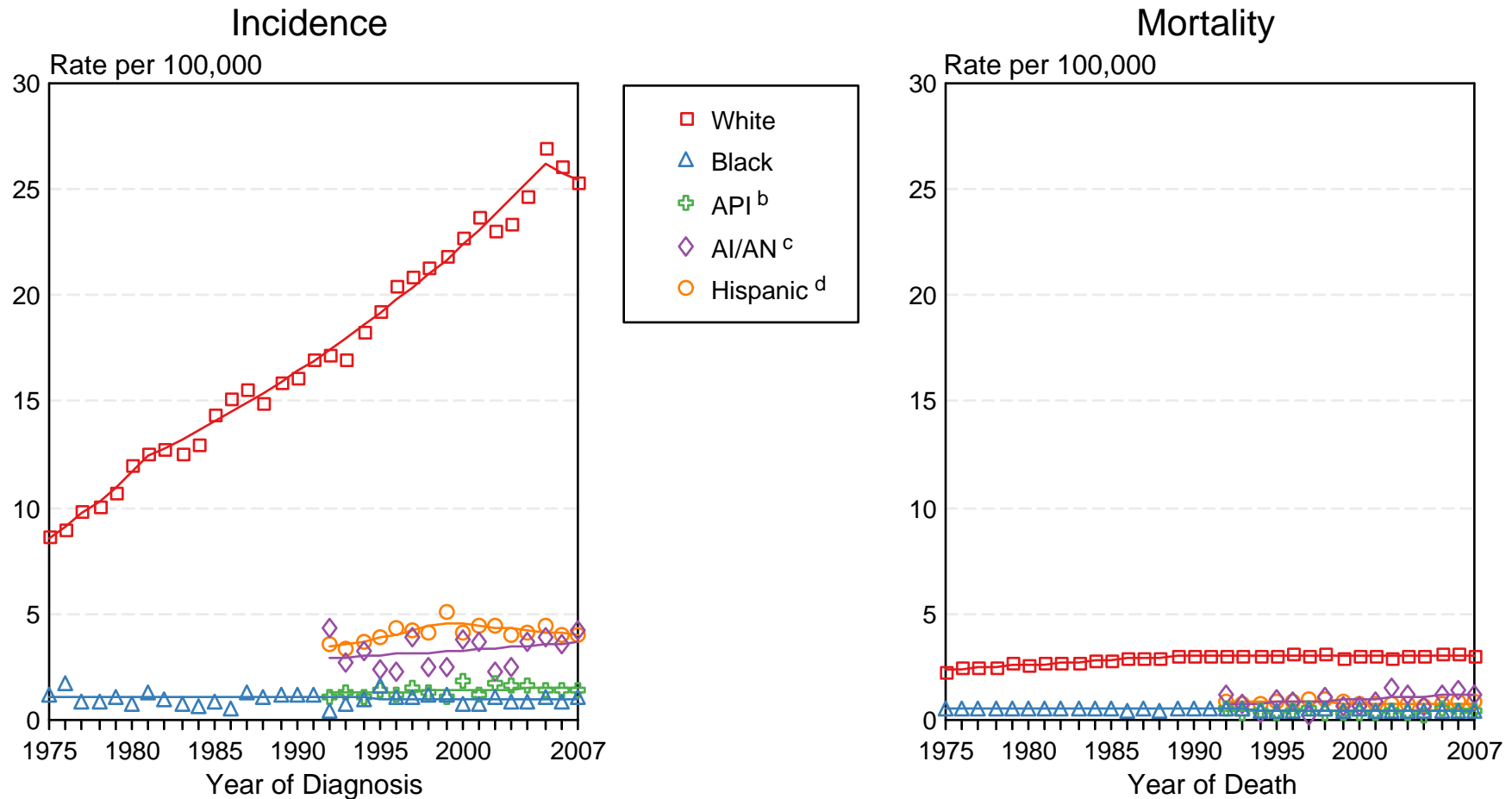


Figure 16.2

Source: Incidence data for whites and blacks are from the SEER 9 areas (San Francisco, Connecticut, Detroit, Hawaii, Iowa, New Mexico, Seattle, Utah, Atlanta).

Incidence data for Asian/Pacific Islanders, American Indians/Alaska Natives and Hispanics are from the SEER 13 Areas (SEER 9 Areas, San Jose-Monterey, Los Angeles, Alaska Native Registry and Rural Georgia). Mortality data are from US Mortality Files, National Center for Health Statistics, CDC.

^a Rates are age-adjusted to the 2000 US Std Population (19 age groups - Census P25-1103).

Regression lines are calculated using the Joinpoint Regression Program Version 3.4.3, April 2010, National Cancer Institute. Joinpoint analyses for Whites and Blacks during the 1975-2007 period allow a maximum of 4 joinpoints. Analyses for other ethnic groups during the period 1992-2007 allow a maximum of 2 joinpoints.

^b API = Asian/Pacific Islander.

^c AI/AN = American Indian/Alaska Native. Rates for American Indian/Alaska Native are based on the CHSDA (Contract Health Service Delivery Area) counties.

^d Hispanic is not mutually exclusive from whites, blacks, Asian/Pacific Islanders, and American Indians/Alaska Natives. Incidence data for Hispanics are based on NHIA and exclude cases from the Alaska Native Registry. Mortality data for Hispanics exclude cases from Connecticut, the District of Columbia, Maine, Maryland, Minnesota, New Hampshire, New York, North Dakota, Oklahoma, and Vermont.

Melanoma of the Skin

SEER Incidence 1995-1997 vs 2005-2007

White, by Age and Sex

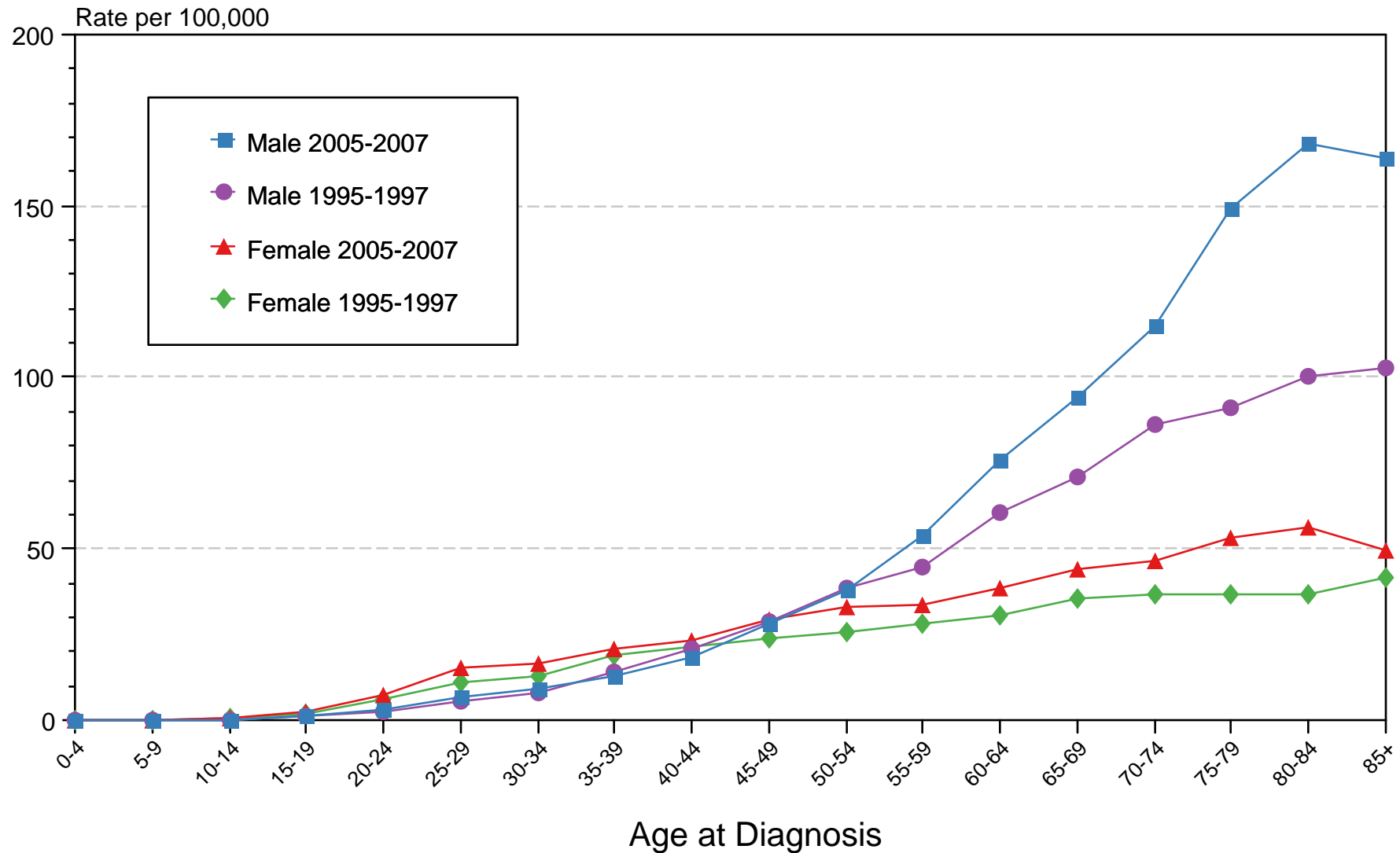


Figure 16.3

Source: SEER 13 areas (San Francisco, Connecticut, Detroit, Hawaii, Iowa, New Mexico, Seattle, Utah, Atlanta, San Jose-Monterey, Los Angeles, Alaska Native Registry and Rural Georgia). Rates are age-adjusted as appropriate to the 2000 US Std Population (19 age groups - Census P25-1103).

SEER Observed Incidence and SEER Delay Adjusted Incidence Rates^a SEER 9 Areas Compared to SEER 13 Areas Melanoma of the Skin, Male, by Race

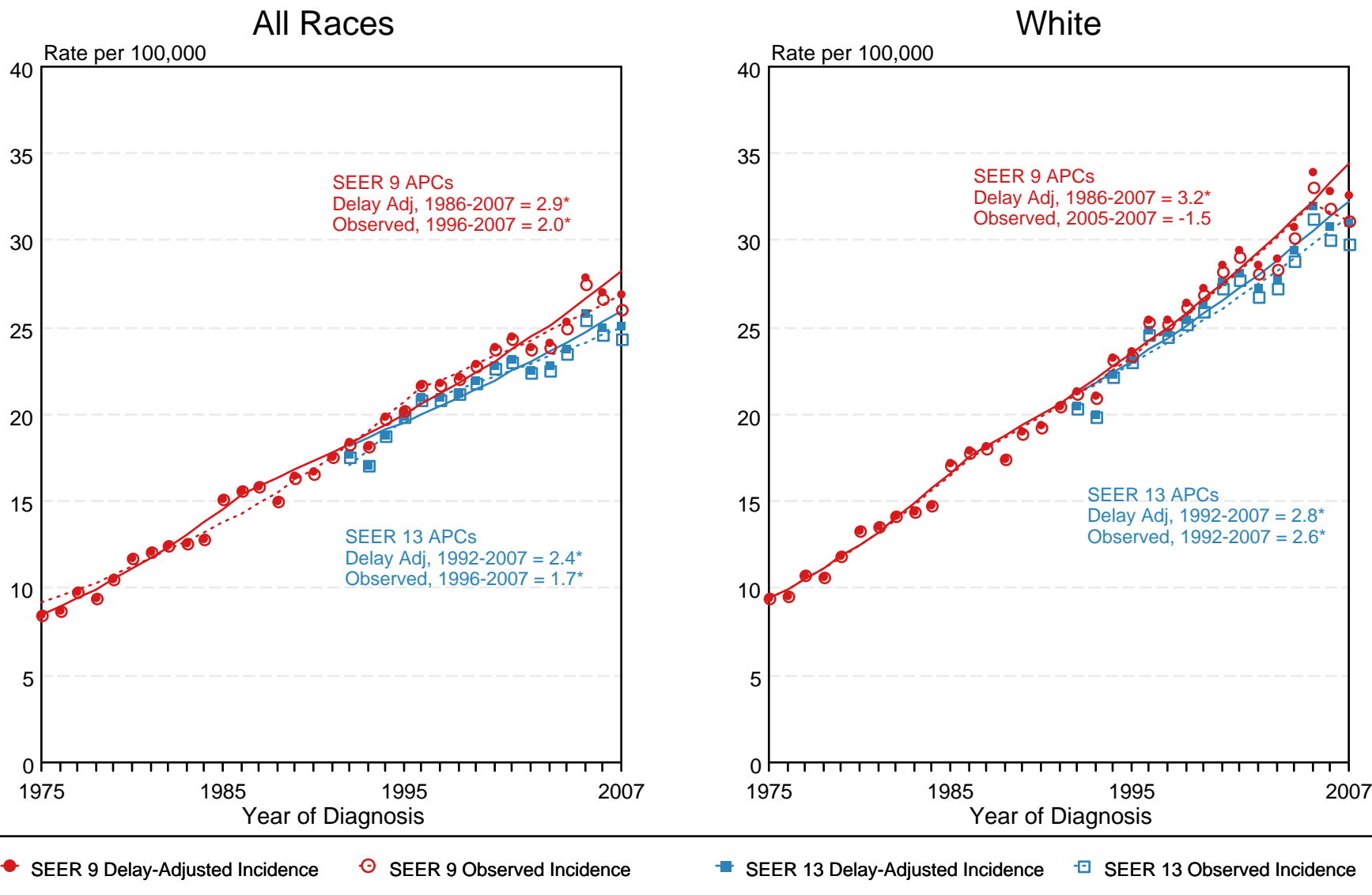


Figure 16.4

^a Source: SEER 9 areas and SEER 13 areas.
Rates are age-adjusted to the 2000 US Std Population (19 age groups - Census P25-1103).
Regression lines and APCs are calculated using the Joinpoint Regression Program Version 3.4.3, April 2010, National Cancer Institute.
The APC is the Annual Percent Change for the regression line segments. The APC shown on the graph is for the most recent trend.
* The APC is significantly different from zero ($p < 0.05$).

SEER Observed Incidence and SEER Delay Adjusted Incidence Rates^a SEER 9 Areas Compared to SEER 13 Areas Melanoma of the Skin, Female, by Race

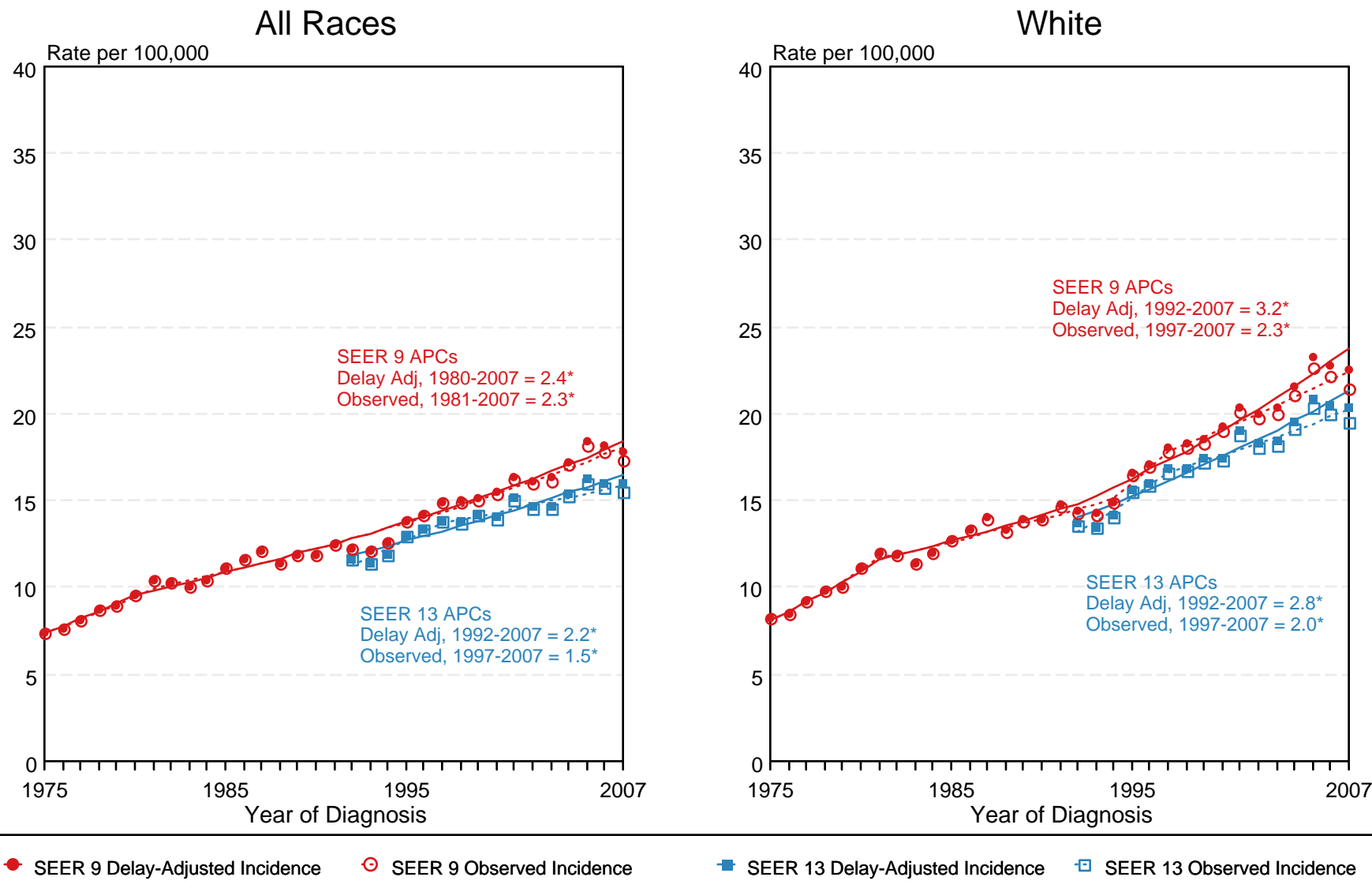


Figure 16.5

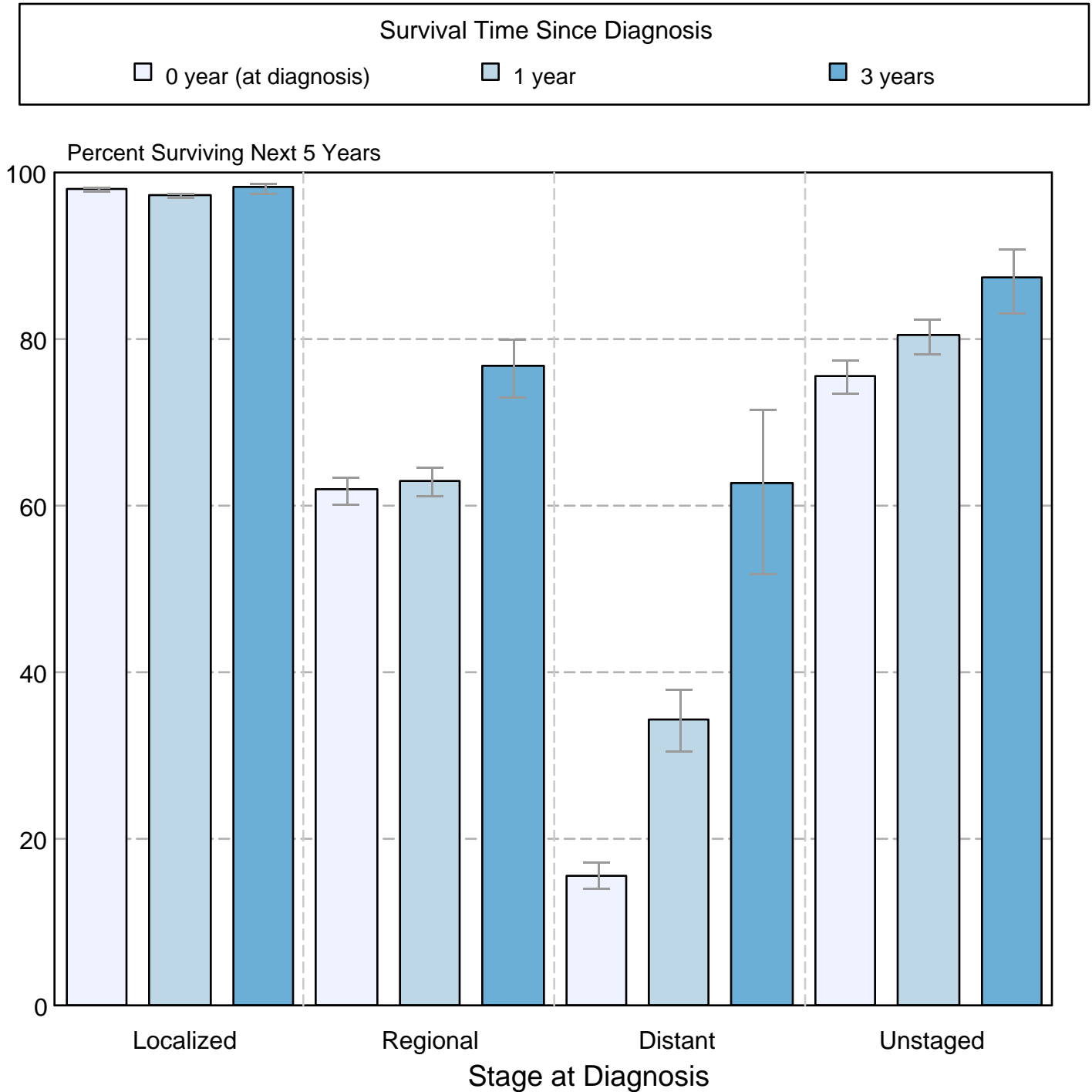
^a Source: SEER 9 areas and SEER 13 areas.
Rates are age-adjusted to the 2000 US Std Population (19 age groups - Census P25-1103).
Regression lines and APCs are calculated using the Joinpoint Regression Program Version 3.4.3, April 2010, National Cancer Institute.
The APC is the Annual Percent Change for the regression line segments. The APC shown on the graph is for the most recent trend.
* The APC is significantly different from zero ($p < 0.05$).

Figure 16.6

Melanoma of the Skin

5-Year SEER Conditional Relative Survival and 95% Confidence Intervals

Probability of surviving the next 5 years given the cohort
has already survived 0, 1, or 3 years
1998-2006 by stage at diagnosis



Source: SEER 17 areas (San Francisco, Connecticut, Detroit, Hawaii, Iowa, New Mexico, Seattle, Utah, Atlanta, San Jose-Monterey, Los Angeles, Alaska Native Registry, Rural Georgia, California excluding SF/SJM/LA, Kentucky, Louisiana, and New Jersey). California excluding SF/SJM/LA, Kentucky, Louisiana, and New Jersey contribute cases for diagnosis years 2000-2006. The remaining 13 SEER Areas contribute cases for the entire period 1998-2006. Percent surviving is not shown if based on less than 25 cases. Confidence intervals are not shown if length of the confidence interval is greater than 5 times the standard error.