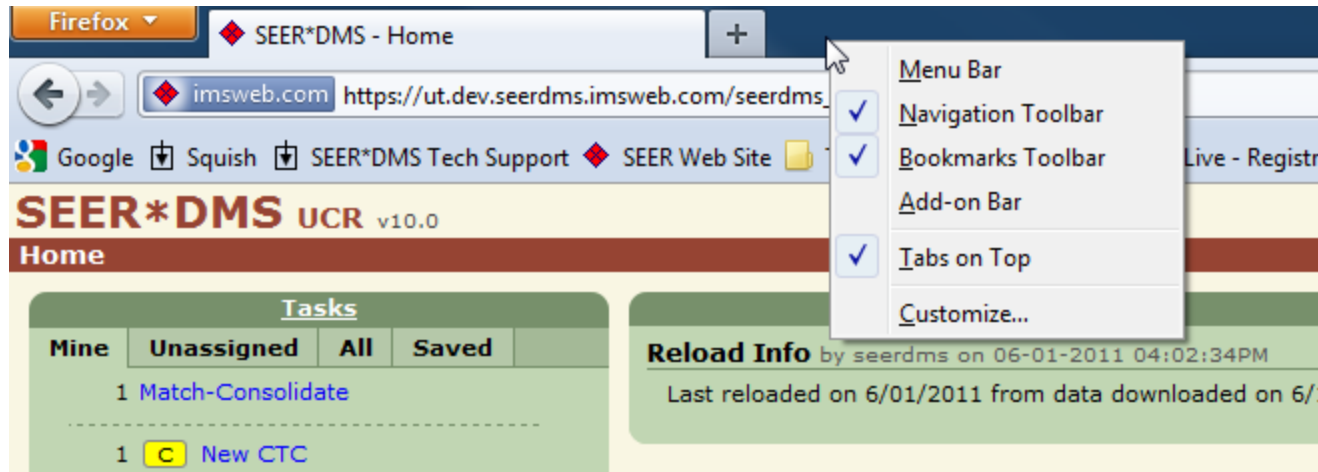


SEER*DMS & FIREFOX 4

Recommended Options for Firefox v4

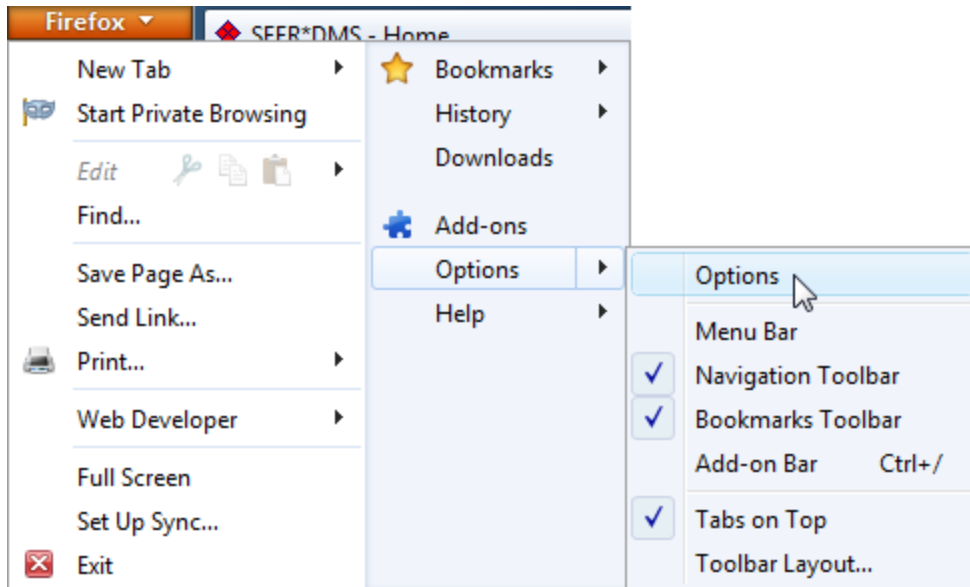
Turn Off the Firefox Menu Bar

To give additional space to SEER*DMS, do not show the Firefox menu bar. To hide the bar, right-click an empty section of the tab strip (dark blue in the picture below). Uncheck menu bar. You may also want to uncheck the navigation and bookmarks toolbars. The menu bar will be replaced with the orange Firefox button next to the first tab.



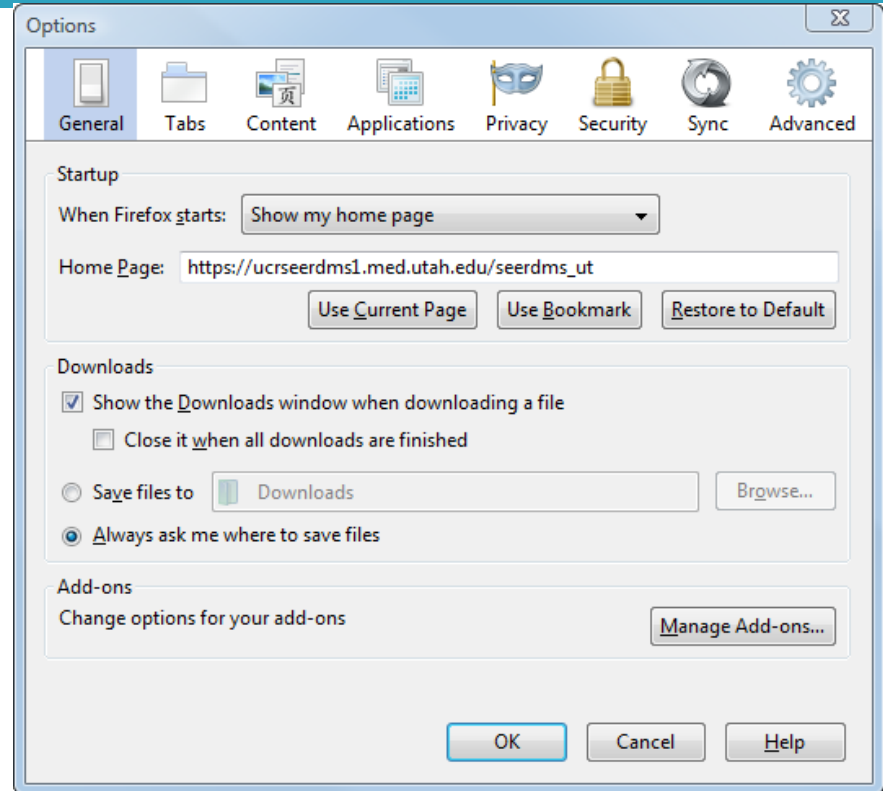
Firefox Options

From the Firefox menu, select Options > Options.



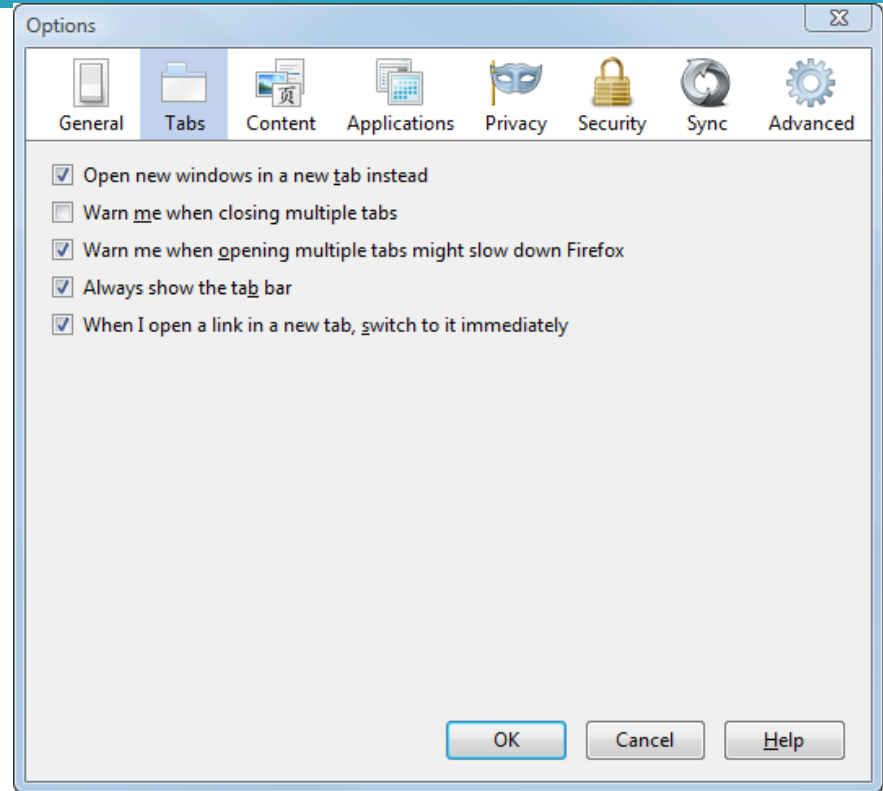
Options -> General

- Set “When Firefox starts” to Show my home page
- Set Home Page to the SEER*DMS URL
- Any settings can be used for Download options based on your personal preference.



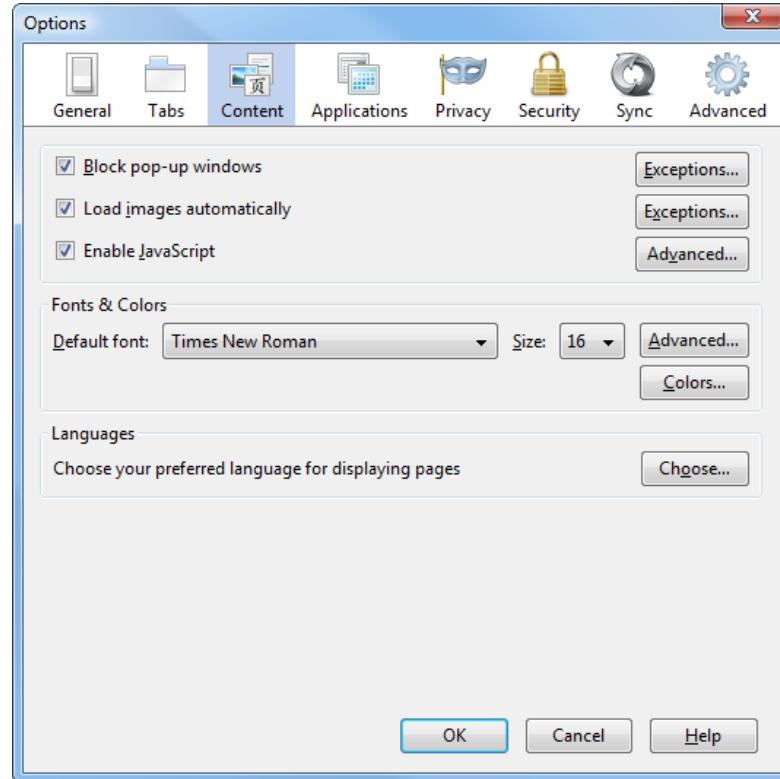
Options -> Tabs

- You may use any settings for Tabs.
- Tabbed browsing allows you to display multiple SEER*DMS pages within a single window. However, a person with a dual monitor configuration may prefer to display multiple pages in separate windows.
- To open pages in separate windows, uncheck Open new windows in a new tab instead. Check this option if you prefer to open pages in tabs within the current window.



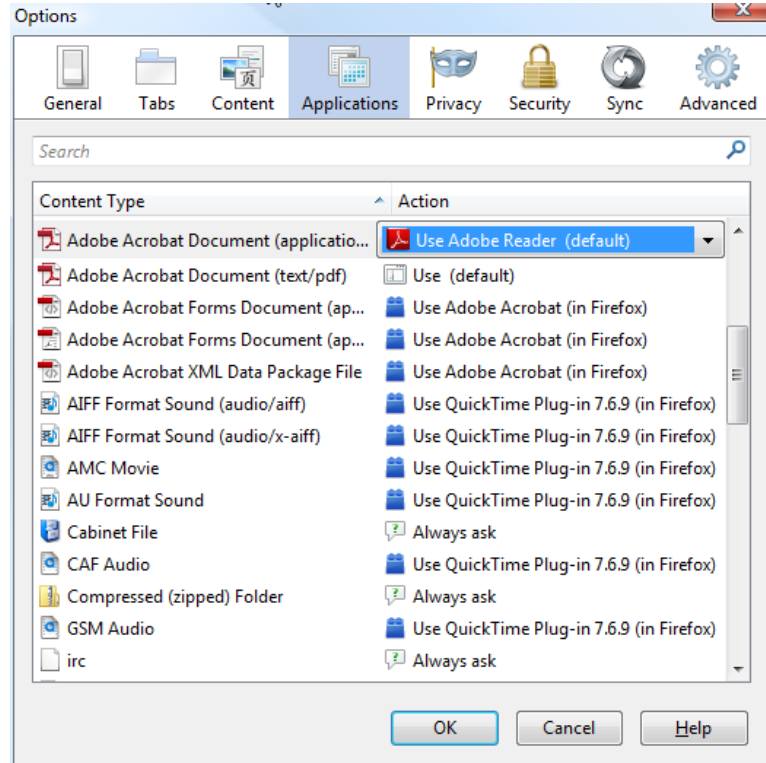
Options -> Content

- Enable JavaScript** must be checked.
- Pop-up windows are used to display the print preview for Records and Patient Sets. To ensure that you can print data within SEER*DMS, set the option related to pop-up windows. You can either:
 - Uncheck Block pop-up windows.
 - Or click Exceptions and add the SEER*DMS URL as an exception.



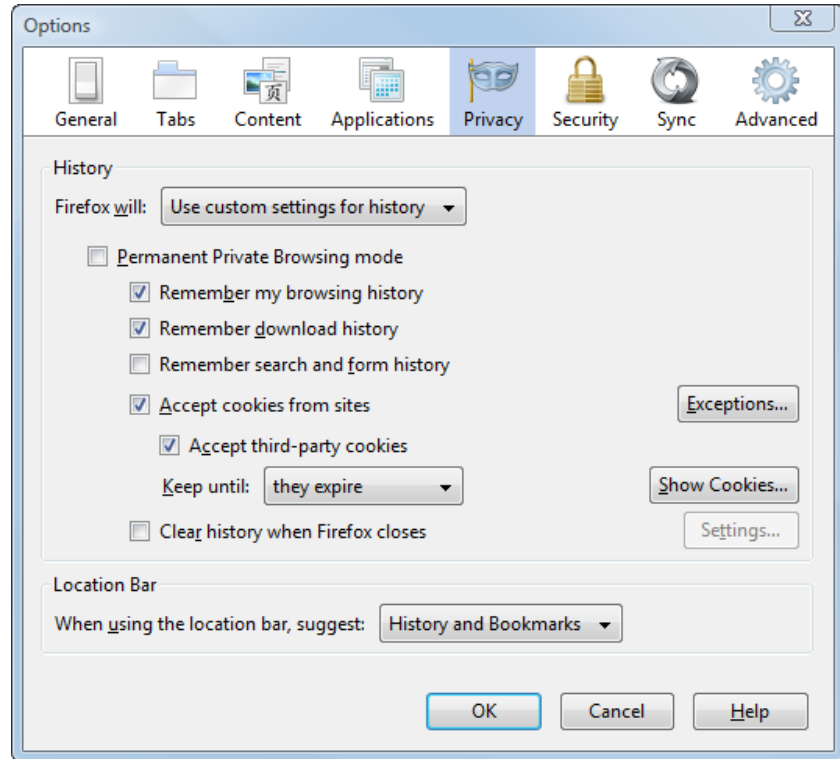
Options -> Applications

- ❑ Set Adobe Acrobat Document to Use Adobe Reader or other PDF software. Do not select an option that says “in Firefox”.



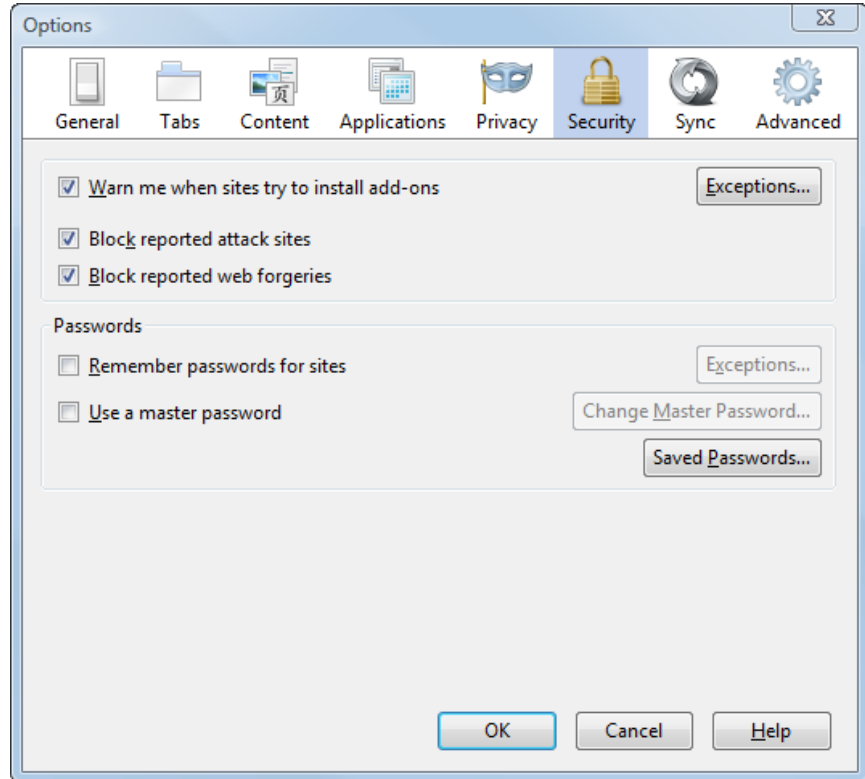
Options -> Privacy

- Select Firefox will **Use custom settings for history**
- Remember search and form history** cannot be checked



Options -> Security

- Remember passwords for sites** cannot be checked



Options -> Advanced

- ❑ On the General tab, **Use hardware acceleration when available** cannot be checked

