

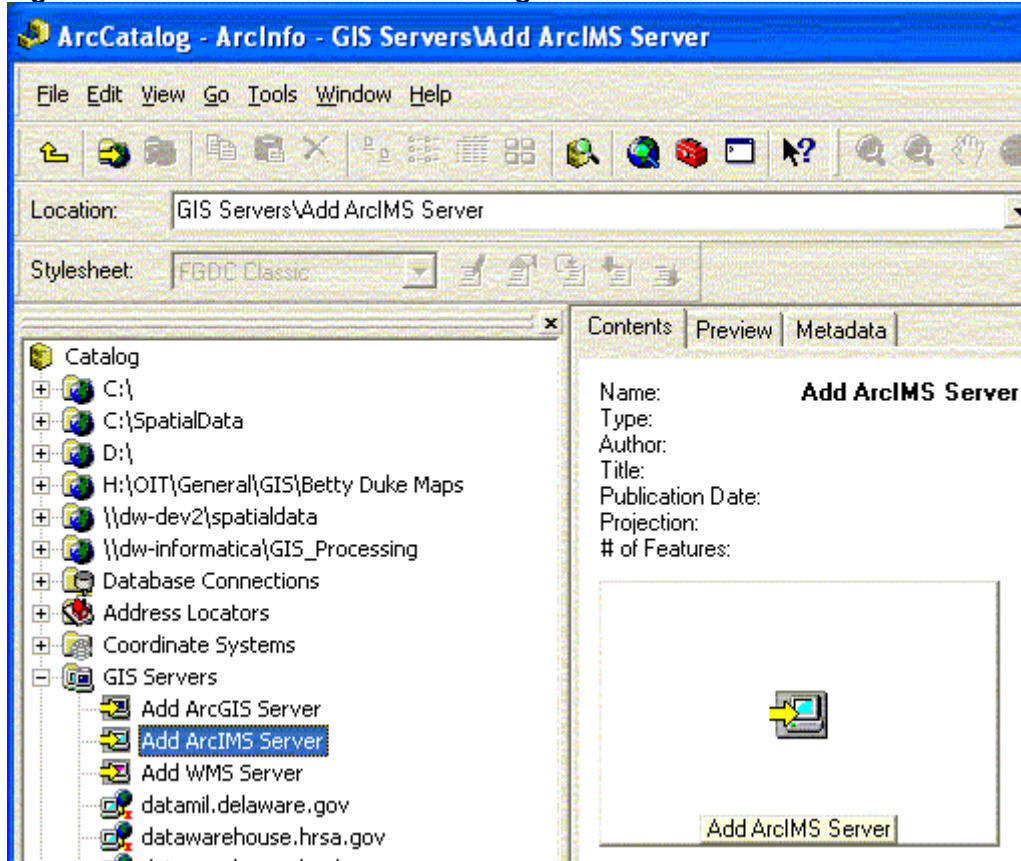
## Connecting to the HRSA Data Warehouse (HDW) Feature Service

<http://datawarehouse.hrsa.gov>

This document describes the steps necessary to use ArcCatalog (part of the ArcGIS software available from ESRI) to connect to and use the HRSA Geospatial Data Warehouse feature service (HGDW\_Mapping) located at <http://datawarehouse.hrsa.gov>.

**Step 1:** Open ArcCatalog. From the Table of Contents (the left-side pane in the Explorer-like window) choose GIS Servers to expand the list of options.

**Figure 1: Screen shot of the ArcCatalog Table of Contents**

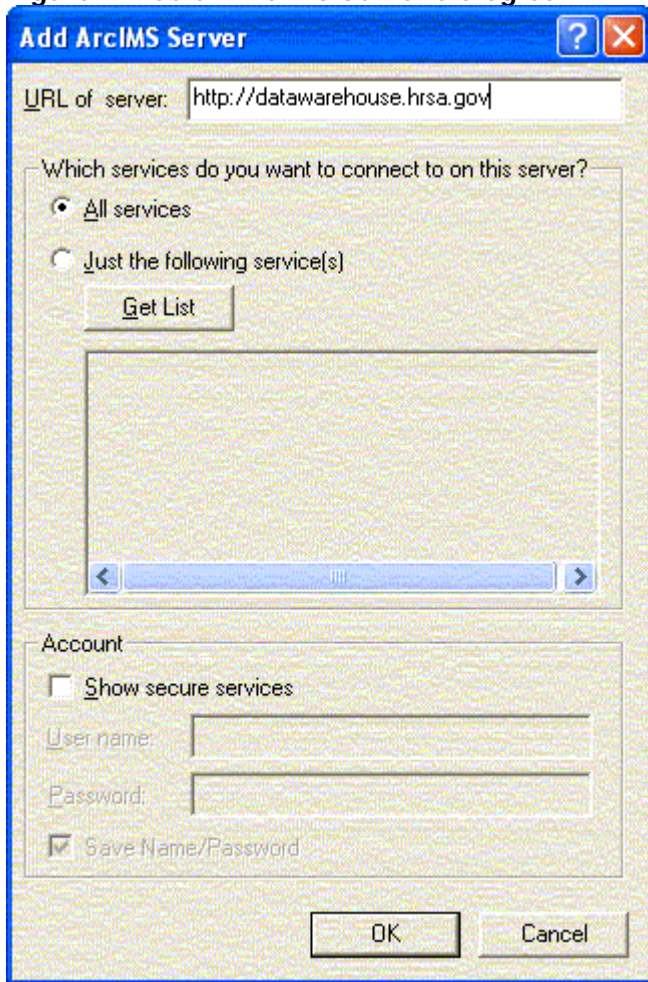


Connecting to the HRSA Data Warehouse (HDW) Feature Service

<http://datawarehouse.hrsa.gov>

**Step 2:** Double-click the Add ArcIMS Server option to get the dialog window shown below, then enter the URL of the HGDW as shown:


**Figure 2: Add an ArcIMS Server dialog box**



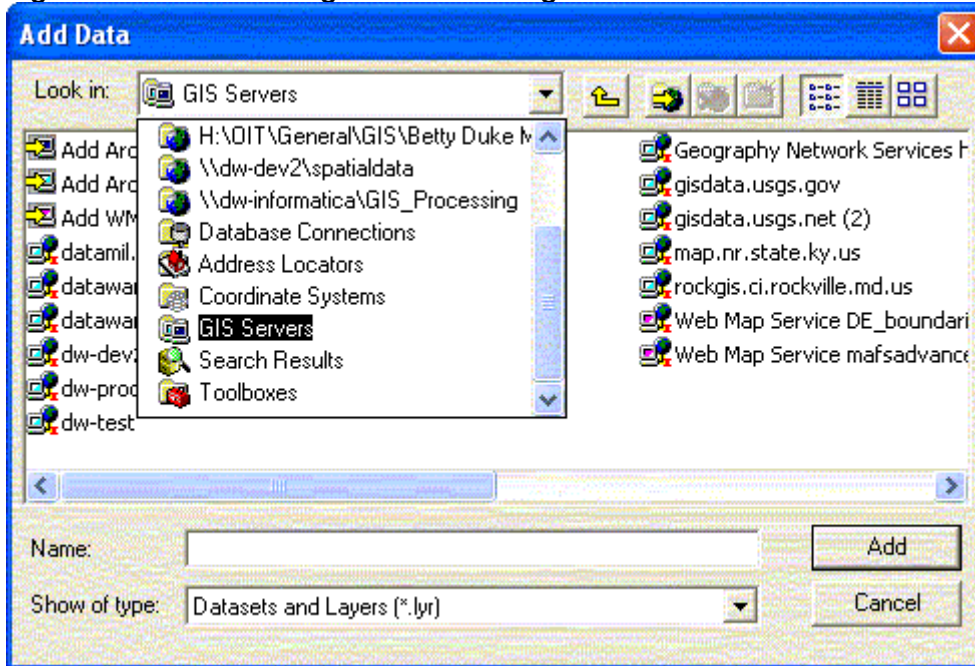
**Step 3:** After you click OK to create the connection in ArcCatalog, open ArcMap.

## Connecting to the HRSA Data Warehouse (HDW) Feature Service

<http://datawarehouse.hrsa.gov>

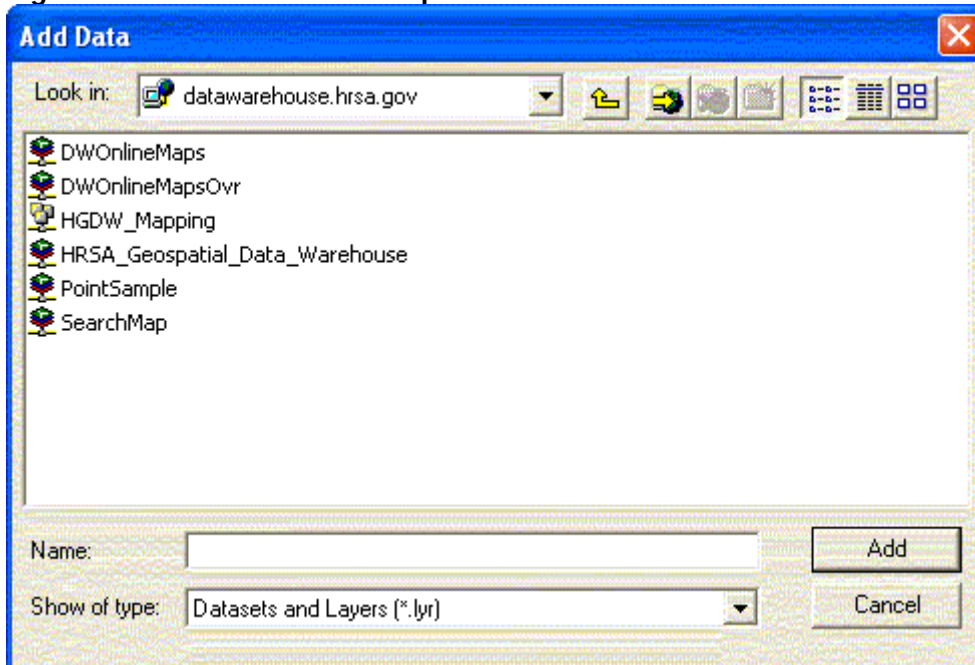
**Step 4:** Click the Add Data button (  ) on the ArcMap toolbar to open the Add Data Dialog. Pull down the "Look In" list and choose GIS Servers.

**Figure 3: The ArcCatalog Add Data dialog box**



**Step 5:** Double-click on the datawarehouse.hrsa.gov server connection. You get the list of services that exist on this server.

**Figure 4: The list of ArcIMS map services available at datawarehouse.hrsa.gov**

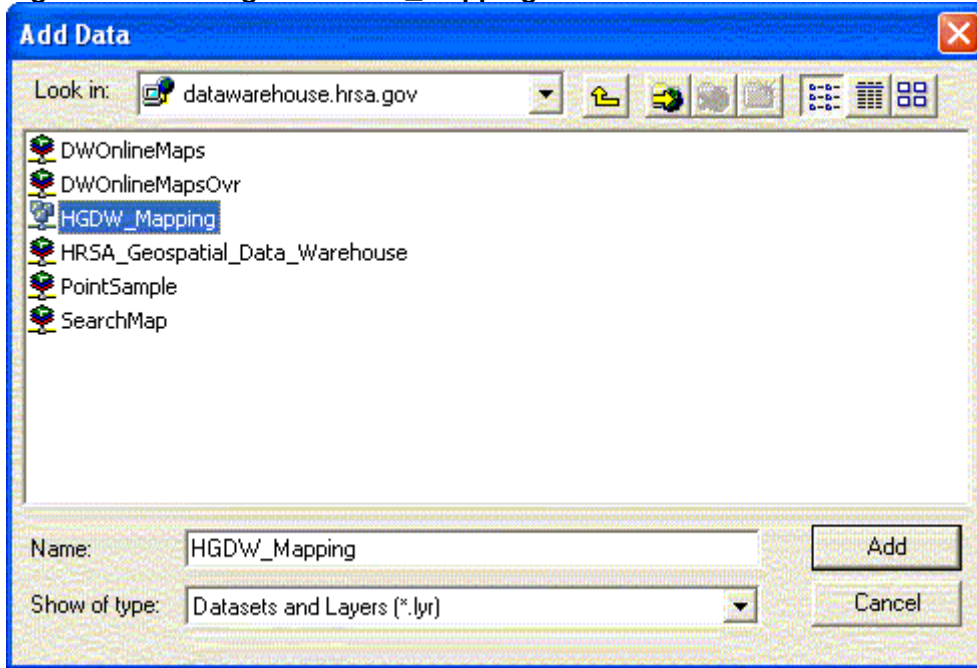


Connecting to the HRSA Data Warehouse (HDW) Feature Service

<http://datawarehouse.hrsa.gov>

(Conceptually this is like seeing the list of folders on a server. For image services you see the image service icon (🖼️). You can't drill any farther into these services- you just add the whole service to your map. For feature services (🗺️) you can actually drill one more level in, and select individual layers, or you can add the whole service to your map.) The screen shot below shows the entire HGDW\_Mapping feature service selected.

Figure 5: Selecting the HGDW\_Mapping ArcIMS feature service



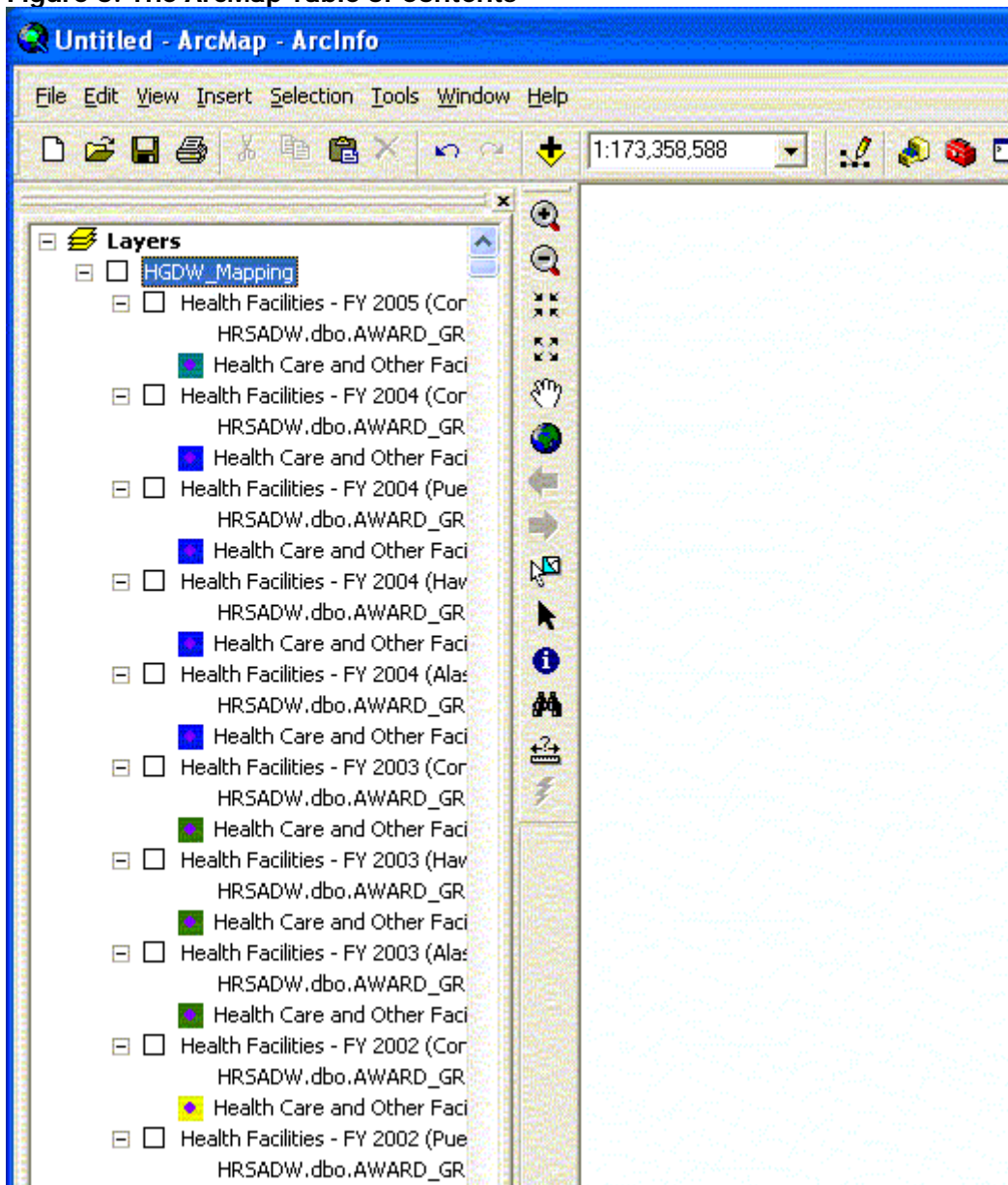


## Connecting to the HRSA Data Warehouse (HDW) Feature Service

<http://datawarehouse.hrsa.gov>

**Step 6:** Once you've added the HGDW\_Mapping service to the map, the Table of Contents in ArcMap should look similar to this:

**Figure 6: The ArcMap Table of Contents**



From this point, you should be able to work with the data just as if it were in a shape file on your own system. Remember, though, that as the data in the HGDW changes you may see different features. Each time the data in the HGDW are updated, the change is noted on the Data Refresh Dates page of the HGDW website.