

BTOP Comprehensive Community Infrastructure Community Anchor Institution and Network Points of Interest Detail Template

Please complete the Anchor Institution Details worksheet by providing information on Community Anchor Institutions that will be directly connected by the proposed network as necessary. All Community Anchor Institutions should be given a type from the specification. A Community Anchor Institution is considered a minority-serving institution if it is a post-secondary educational institution with enrollment of minority students exceeding 50% of its total enrollment. The "Project Role" column only requires a word or two, or a short phrase, not a detailed explanation of the role of project partners and community anchor institution provided in the essay portions of the application.

Please complete the Points of Interest worksheet by providing information on all points of interest (passive, non-environmentally controlled points of interconnection, cell tower points, may be excluded), collocation facilities, central offices, head ends, and other central facilities, network access points to last mile service providers, Internet peering points, etc. For each point of interest you may provide either a street address or geocoordinates (lat/long). You must provide detail on what the point of interest is, whether it is already existing or will be created by the proposed project. Where more than one facility type applies, select the most appropriate facility type. For example, if a central office houses a point of interconnection, select central office as the facility type, or if a cell site is located on a tower, select tower as the facility type. Interconnection Available at the Facility field should be Yes if interconnection to the proposed network is available at that location, otherwise No. The brief description field is optional and can be used to convey a better understanding of what the facility is. You may use the space at the bottom of the table to provide additional notes, if desired.

The data provided via this template will be subject to automated processing. Applicants are therefore required to provide this upload as an Excel file, and not to convert it to a PDF or other format for upload. Additionally, applicants should not modify the format of this file.

all
ork. Add rows
cified list. A
dary
ment. The
xplanation. A
is should be

its of
e.g. splice
entralized
, and towers.
or both. You
ould be
ie larger
central office
e. The
roposed
onal, but may
ce provided at

ants are
PDF prior to

BTOP CCI Community Anchor Institutions Detail Template

Title:

Easy Grants ID:

Facility Name	Organization	Address Line 1	City	State	Zip	Facility Type	Minority Serving Institution Type	Project Role
Fire Station 1	City of Charlotte	221 North Myers Street	Charlotte	NC	28202	Public Safety Entity		access point
Fire Station 2	City of Charlotte	1817 South Boulevard	Charlotte	NC	28203	Public Safety Entity		access point
Fire Station 3	City of Charlotte	6512 Monroe Road	Charlotte	NC	28212	Public Safety Entity		access point
Fire Station 4	City of Charlotte	525 North Church Street	Charlotte	NC	28202	Public Safety Entity		access point
Fire Station 5	City of Charlotte	224 Wesley Heights Way	Charlotte	NC	28208	Public Safety Entity		access point
Fire Station 6	City of Charlotte	249 South Laurel Avenue	Charlotte	NC	28207	Public Safety Entity		access point
Fire Station 7	City of Charlotte	3210 North Davidson Street	Charlotte	NC	28205	Public Safety Entity		access point
Fire Station 8	City of Charlotte	1201 The Plaza	Charlotte	NC	28205	Public Safety Entity		access point
Fire Station 9	City of Charlotte	4529 McKee Road	Charlotte	NC	28270	Public Safety Entity		access point
Fire Station 10	City of Charlotte	2810 Wilkinson Boulevard	Charlotte	NC	28208	Public Safety Entity		access point
Fire Station 11	City of Charlotte	620 West 28th Street	Charlotte	NC	28206	Public Safety Entity		access point
Fire Station 12	City of Charlotte	420 Inwood Drive	Charlotte	NC	28209	Public Safety Entity		access point
Fire Station 13	City of Charlotte	4337 Glenwood Drive	Charlotte	NC	28208	Public Safety Entity		access point
Fire Station 14	City of Charlotte	114 North Sharon Road	Charlotte	NC	28211	Public Safety Entity		access point
Fire Station 15	City of Charlotte	3617 Frontenac Avenue	Charlotte	NC	28215	Public Safety Entity		access point
Fire Station 16	City of Charlotte	6623 Park South Drive	Charlotte	NC	28210	Public Safety Entity		access point
Fire Station 17	City of Charlotte	5308 Morris Field Drive	Charlotte	NC	28208	Public Safety Entity		access point
Fire Station 18	City of Charlotte	2337 Keller Avenue	Charlotte	NC	28216	Public Safety Entity		access point
Fire Station 19	City of Charlotte	1016 Sardis Lane	Charlotte	NC	28270	Public Safety Entity		access point
Fire Station 20	City of Charlotte	9400 Nations Ford Road	Charlotte	NC	28273	Public Safety Entity		access point
Fire Station 21	City of Charlotte	1023 Little Rock Road	Charlotte	NC	28214	Public Safety Entity		access point
Fire Station 22	City of Charlotte	1917 West Sugar Creek	Charlotte	NC	28262	Public Safety Entity		access point
Fire Station 23	City of Charlotte	7400 East WT Harris Boulevard	Charlotte	NC	28213	Public Safety Entity		access point
Fire Station 24	City of Charlotte	7132 Pineville-Matthews Road	Charlotte	NC	28226	Public Safety Entity		access point
Fire Station 25	City of Charlotte	6741 Pleasant Grove Road	Charlotte	NC	28216	Public Safety Entity		access point
Fire Station 26	City of Charlotte	9231 South Tryon Street	Charlotte	NC	28273	Public Safety Entity		access point
Fire Station 27	City of Charlotte	111 Ken Hoffman Drive	Charlotte	NC	28262	Public Safety Entity		access point
Fire Station 28	City of Charlotte	8031 Old Statesville Road	Charlotte	NC	28269	Public Safety Entity		access point
Fire Station 29	City of Charlotte	2121 Margaret Wallace Road	Charlotte	NC	28205	Public Safety Entity		access point
Fire Station 30	City of Charlotte	4707 Belle Oaks Drive	Charlotte	NC	28217	Public Safety Entity		access point
Fire Station 31	City of Charlotte	3820 Ridge Road	Charlotte	NC	28269	Public Safety Entity		access point
Fire Station 32	City of Charlotte	9225 Bryant Farms Road	Charlotte	NC	28277	Public Safety Entity		access point
Fire Station 33	City of Charlotte	2001 Mt. Holly-Huntersville Rd	Charlotte	NC	28214	Public Safety Entity		access point
Fire Station 34	City of Charlotte	2824 Rocky River Road	Charlotte	NC	28215	Public Safety Entity		access point
Fire Station 35	City of Charlotte	1120 Pavilion Boulevard	Charlotte	NC	28262	Public Safety Entity		access point
Fire Station 36	City of Charlotte	2325 W Mallard Crk Church Rd	Charlotte	NC	28262	Public Safety Entity		access point
Fire Station 37	City of Charlotte	13828 South Tryon Street	Charlotte	NC	28278	Public Safety Entity		access point
Fire Station 38	City of Charlotte	12100 Shopton Road West	Charlotte	NC	28278	Public Safety Entity		access point
Fire Station 39	City of Charlotte	8325 Providence Road	Charlotte	NC	28277	Public Safety Entity		access point
Fire Station 40	City of Charlotte	9720 Harrisburg Road	Charlotte	NC	28215	Public Safety Entity		access point
SOUTHSIDE HOMES	CHA	3400 Griffith Street	Charlotte	NC	28203	Public Housing	N/A	in-kind match contributor
FIRST WARD PLACE	CHA					Other Government Facility	N/A	in-kind match contributor
EDWIN TOWERS	CHA	550 East 8th Street	Charlotte	NC	28202	Public Housing	N/A	in-kind match contributor
STRAWN APARTMENTS	CHA	201 W. 10th Street	Charlotte	NC	28202	Public Housing	N/A	in-kind match contributor
	CHA	1225 S. Caldwell Street	Charlotte	NC	28203	Public Housing	N/A	in-kind match contributor
ARBOR GLEN 50	CHA					Other Government Facility	N/A	in-kind match contributor
	CHA	2204 Caronia Street	Charlotte	NC	28208	Other Government Facility	N/A	in-kind match contributor
ARBOR GLEN 50	CHA					Other Government Facility	N/A	in-kind match contributor
	CHA	1425 Clanton Road	Charlotte	NC	28208	Other Government Facility	N/A	in-kind match contributor

Facility Name	Organization	Address Line 1	City	State	Zip	Facility Type	Minority Serving Institution Type	Project Role
ARBOR GLEN I	CHA	2305 Farmer Street	Charlotte	NC	28208	Other Government Facility	N/A	in-kind match contributor
BOULEVARD HOMES	CHA	1620 Brooksvale Street	Charlotte	NC	28208	Public Housing	N/A	in-kind match contributor
DILLEHAY COURTS	CHA	2600 N. Pine Street	Charlotte	NC	28206	Public Housing	N/A	in-kind match contributor
LEAFCREST	CHA	6513 Leafcrest Lane	Charlotte	NC	28210	Public Housing	N/A	in-kind match contributor
CEDAR KNOLL	CHA	304 Green Needles Ct	Charlotte	NC	28217	Public Housing	N/A	in-kind match contributor
MALLARD RIDGE	CHA	1428 Axminster Ct	Charlotte	NC	28210	Public Housing	N/A	in-kind match contributor
CHARLOTTETOWN TERRACE	CHA	1000 Baxter Street	Charlotte	NC	28204	Public Housing	N/A	in-kind match contributor
PARKTOWNE TERRACE	CHA	5800 Fairview Road	Charlotte	NC	28210	Public Housing	N/A	in-kind match contributor
TALL OAKS (29@Fraizer; 50	CHA	401 Baldwin Avenue	Charlotte	NC	28204	Public Housing	N/A	in-kind match contributor
SAVANNA WOODS	CHA	3124 Leaside Lane	Charlotte	NC	28209	Public Housing	N/A	in-kind match contributor
TARLTON HILLS	CHA	201 Frazier Avenue	Charlotte	NC	28216	Public Housing	N/A	in-kind match contributor
AUTUMN PLACE	CHA	321 N. Davidson Street	Charlotte	NC	28202	Public Housing	N/A	in-kind match contributor
HALL HOUSE	CHA	426 N. Tryon Street	Charlotte	NC	28208	Public Housing	N/A	in-kind match contributor
MEADOW OAKS	CHA	6011 Florence Avenue	Charlotte	NC	28212	Public Housing	N/A	in-kind match contributor
GLADEDALE	CHA	5805 Olde Providence Rd	Charlotte	NC	28226	Public Housing	N/A	in-kind match contributor
WALLACE WOODS	CHA	7120/C Wallace Road	Charlotte	NC	28212	Public Housing	N/A	in-kind match contributor
SUNRIDGE	CHA	4005 Sunridge Lane	Charlotte	NC	28215	Public Housing	N/A	in-kind match contributor
ROBINSDALE	CHA	1001 Margie Ann Drive	Charlotte	NC	28215	Public Housing	N/A	in-kind match contributor
CLAREMONT	CHA	1032-F Coliseum Drive	Charlotte	NC	28205	Public Housing	N/A	in-kind match contributor
VICTORIA SQUARE	CHA	225-D N Clarkson Street	Charlotte	NC	28202	Public Housing	N/A	in-kind match contributor
PARK @ OAKLAWN	CHA	1215 Rising Oak Drive	Charlotte	NC	28206	Other Government Facility	N/A	in-kind match contributor
RIVERMERE	CHA	3404 Dunn Commons Pkwy	Charlotte	NC	28216	Other Government Facility	N/A	in-kind match contributor
ARBOR GLEN II	CHA	2305 Farmer Street	Charlotte	NC	28208	Other Government Facility	N/A	in-kind match contributor
NIA POINT	CHA	2617 Pitts Drive	Charlotte	NC	28216	Other Government Facility	N/A	in-kind match contributor
ARBOR GLEN III	CHA	2305 Farmer Street	Charlotte	NC	28208	Other Government Facility	N/A	in-kind match contributor
MCADEN PARK	CHA	825 E. 16th Street	Charlotte	NC	28205	Other Government Facility	N/A	in-kind match contributor
MCADEN PARK	CHA	901 E. 15th Street	Charlotte	NC	28205	Other Government Facility	N/A	in-kind match contributor
STONEHAVEN EAST	CHA	7000 Fernwood Drive	Charlotte	NC	28211	Other Government Facility	N/A	in-kind match contributor
MONTGOMERY GARDENS	CHA	5200 Beatties Ford Road	Charlotte	NC	28216	Other Government Facility	N/A	in-kind match contributor
PROSPERITY CREEK	CHA	3701 Prosperity Church Road	Charlotte	NC	28269	Other Government Facility	N/A	in-kind match contributor
SOUTH OAK CROSSING	CHA	7501 Old Pineville Road	Charlotte	NC	28217	Other Government Facility	N/A	in-kind match contributor
SPRINGFIELD GARDENS	CHA	9600 Idlewild Road	Charlotte	NC	28227	Other Government Facility	N/A	in-kind match contributor
940 BREVARD	CHA	940 Brevard Street	Charlotte	NC	28202	Other Government Facility	N/A	in-kind match contributor
SEIGLE POINT APT HOMES	CHA	831 Seigle Avenue	Charlotte	NC	28204	Other Government Facility	N/A	in-kind match contributor
SPRINGCROFT AT ASHLEY P	CHA	6770 Broad Street	Charlotte	NC	28211	Other Government Facility	N/A	in-kind match contributor
MCALPINE TERRACE	CHA	6130 Pineburr Road	Charlotte	NC	28211	Other Government Facility	N/A	in-kind match contributor
GLEN COVE APARTMENTS	CHA	6130 Pineburr Road	Charlotte	NC	28211	Other Government Facility	N/A	in-kind match contributor
FAIRMARKET SQUARE	CHA	5914 Fairmarket Place	Charlotte	NC	28215	Other Government Facility	N/A	in-kind match contributor

Facility Name	Organization	Address Line 1	City	State	Zip	Facility Type	Minority Serving Institution Type	Project Role
SENECA WOODS	CHA	1509 Seneca Place	Charlotte	NC	28209	Other Government Facility	N/A	in-kind match contributor
GROVE PLACE	CHA	6905 E WT Harris Blvd.	Charlotte	NC	28215	Other Government Facility	N/A	in-kind match contributor
OAK VALLEY	CHA	2820 Oak Valley Lane	Charlotte	NC	28205	Other Government Facility	N/A	in-kind match contributor
VALLEY VIEW	CHA	5117-A Hickory Valley Court	Charlotte	NC	28212	Other Government Facility	N/A	in-kind match contributor
VILLA COURTS	CHA	820 Villa Court Lane	Charlotte	NC	28211	Other Government Facility	N/A	in-kind match contributor
WOODLAWN HOUSE APARTM	CHA	1315 E. Woodlawn Road	Charlotte	NC	28209	Other Government Facility		
HAMPTON CRESTE APARTME	CHA	920 N. Wendover Road	Charlotte	NC	28211	Other Government Facility		
VILLA COURTS	CHA	821 Villa Court Lane	Charlotte	NC	28211	Other Government Facility	N/A	in-kind match contributor
6th & DAVIDSON	CHA	241 N Alexander Street	Charlotte	NC	28202	Other Government Facility	N/A	in-kind match contributor
KREFELD	CHA	0 Krefeld Drive	Charlotte	NC	28105	Other Government Facility		
KREFELD	CHA	2500 Margaret Wallace Road	Charlotte	NC	28105	Other Government Facility		
KREFELD	CHA	2630 Margaret Wallace Road	Charlotte	NC	28105	Other Government Facility	N/A	in-kind match contributor
SECTION 8 OFFICES	CHA	135 Scaleybark Road	Charlotte	NC	28209	Other Government Facility	N/A	in-kind match contributor
ADMINISTRATIVE OFFICE	CHA	1301 South Blvd	Charlotte	NC	28203	Other Government Facility	N/A	in-kind match contributor
OPERATION FACILITY	CHA	2600 Youngblood Street	Charlotte	NC	28203	Other Government Facility	N/A	in-kind match contributor
Cornelius Town Hall	Town of Cornelius	21445 Catawba Ave.	Cornelius	NC	28031	Other Government Facility	N/A	Facility Attachment
Cornelius Fire Station 2	Town of Cornelius	19230 Charlestowne Ln.	Cornelius	NC	28031	Public Safety Entity	N/A	Facility Attachment
Bailey Rd. Park	Town of Cornelius	11536 Bailey Rd.	Cornelius	NC	28031	Other Government Facility	N/A	Facility Attachment
Glen Oak Green Park	Town of Cornelius	18905 Coachman's Trace	Cornelius	NC	28031	Other Government Facility	N/A	Facility Attachment
Jetton Rd. Neighborhood Park	Town of Cornelius	16000 Jetton Rd.	Cornelius	NC	28031	Other Government Facility	N/A	Facility Attachment
Legion Park	Town of Cornelius	21214 Legion St.	Cornelius	NC	28031	Other Government Facility	N/A	Facility Attachment
Smithville Park	Town of Cornelius	19710 S. Ferry St.	Cornelius	NC	28031	Other Government Facility	N/A	Facility Attachment
Torrence Chapel Park	Town of Cornelius	21309 Torrence Chapel Rd.	Cornelius	NC	28031	Other Government Facility	N/A	Facility Attachment
Yacht Club Park Playground	Town of Cornelius	Flying Jib and Harborlight Blvd.	Cornelius	NC	28031	Other Government Facility	N/A	Facility Attachment
Walter Henderson Park	Town of Cornelius	20214 Tailwind Lane	Cornelius	NC	28031	Other Government Facility	N/A	Facility Attachment
Cornelius Police Department	Town of Cornelius	21440 Catawba Ave.	Cornelius	NC	28031	Public Safety Entity	N/A	Facility Attachment
Cornelius Animal Control	Town of Cornelius	19200 Meridian St.	Cornelius	NC	28031	Other Government Facility	N/A	Facility Attachment
Cornelius Public Works	Town of Cornelius	18520 Star Creek Dr.	Cornelius	NC	28031	Other Government Facility	N/A	Facility Attachment
Cornelius Fire Station 1	Town of Cornelius	19729 S. Main Stl.	Cornelius	NC	28031	Public Safety Entity	N/A	Facility Attachment
Central Piedmont Community College	Central Campus	1201 Elizabeth Avenue	Charlotte	NC	28204	Community College	N/A	

BTOP CCI Network Points of Interest Detail Template

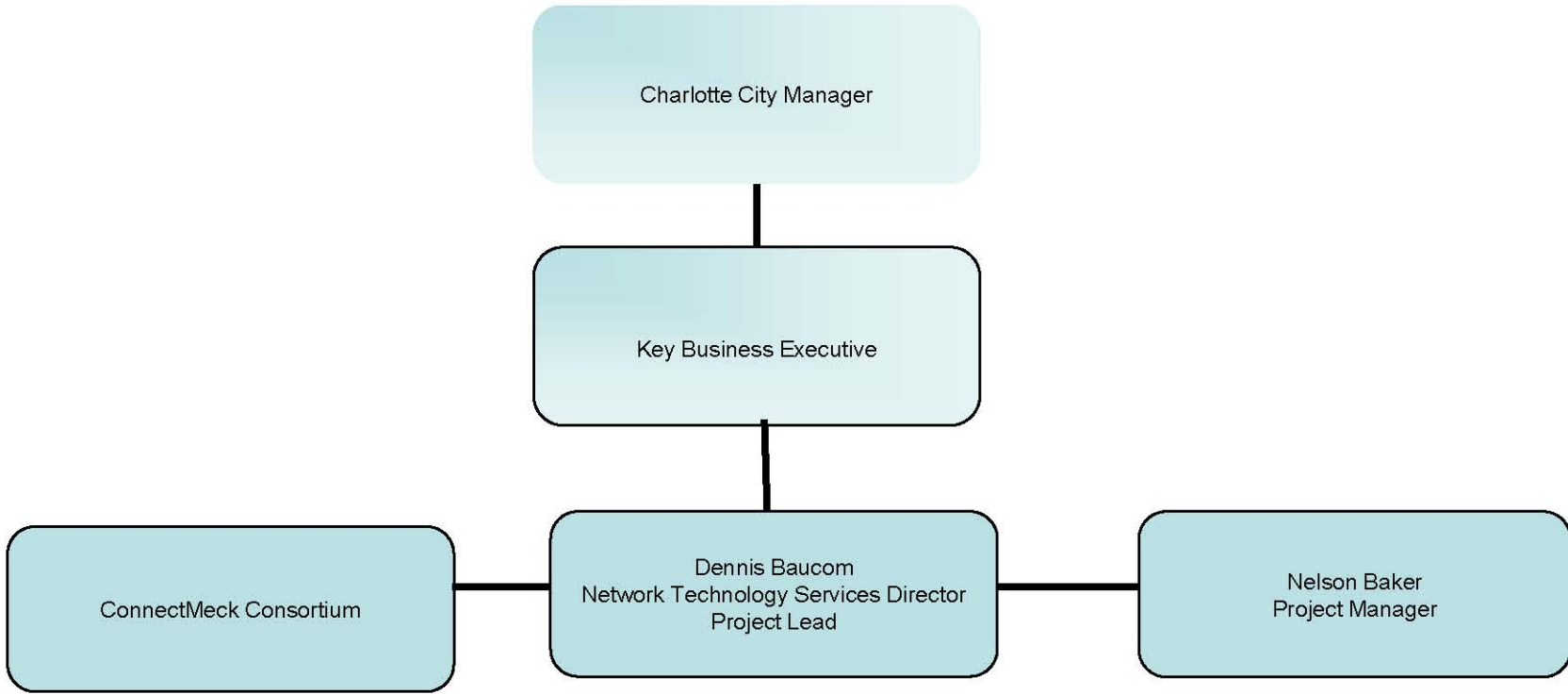
Title:

Easy Grants ID:

Facility Type	Address Line 1	City	State	Zip	Longitude	Latitude	Interconnection Available at this Location	Status in Proposed Network
Tower (microwave link)	600 East Fourth Street	Charlotte	NC	28202	80-50-22.00 W	35-13-18.00 N	YES	Existing - Applicant/Partner Owned
Tower (microwave link)	601 East Trade Street	Charlotte	NC	28202	80-50-34.50 W	35-13-28.40 N	YES	Existing - Applicant/Partner Owned
Tower (microwave link)	5200 Brookshire Boulevard	Charlotte	NC	28216	80-53-34.30 W	35-16-49.50 N	YES	Existing - Applicant/Partner Owned
Tower (microwave link)	561 Team Road	Matthews	NC	28105	80-42-54.20 W	35-08-34.50 N	YES	Existing - Applicant/Partner Owned
Tower (microwave link)	391 Highway 24/27 East	Midland	NC	28107	80-34-05.80 W	35-15-09.80 N	YES	Existing - Applicant/Partner Owned
Tower (microwave link)	7980 Babe Stillwell Farm Rd	Huntersville	NC	28078	80-53-41.30 W	35-25-44.10 N	YES	Existing - Applicant/Partner Owned
Tower (microwave link)	2240 South Point Road	Belmont	NC	28012	81-01-19.30 W	35-11-11.60 N	YES	Existing - Applicant/Partner Owned
Tower (microwave link)	4780 Reagan Drive	Charlotte	NC	28206	80-48-04.30 W	35-16-33.50 N	YES	Existing - Applicant/Partner Owned
Tower (microwave link)	5731 Closebum Drive	Charlotte	NC	28210	80-51-29.30 W	35-09-19.50 N	YES	Existing - Applicant/Partner Owned
Tower (microwave link)	232 Heathway Drive	Charlotte	NC	28202	80-45-53.00 W	35-16-21.00 N	YES	Existing - Applicant/Partner Owned
Tower (microwave link)	1770 Shopton Road	Charlotte	NC	28217	80-55-12.10 W	35-09-54.40 N	YES	Existing - Applicant/Partner Owned
Non-tower Cell Site	221 North Myers Street	Charlotte	NC	28202	80-83-40.60 W	35-22-26.67 N	YES	Existing - Applicant/Partner Owned
Non-tower Cell Site	1817 South Boulevard	Charlotte	NC	28203	80-85-82.98 W	35-21-12.17 N	YES	Existing - Applicant/Partner Owned
Non-tower Cell Site	6512 Monroe Road	Charlotte	NC	28212	80-75-73.30 W	35-17-99.01 N	YES	Existing - Applicant/Partner Owned
Non-tower Cell Site	525 North Church Street	Charlotte	NC	28202	80-83-89.34 W	35-23-17.87 N	YES	Existing - Applicant/Partner Owned
Non-tower Cell Site	224 Wesley Heights Way	Charlotte	NC	28208	80-86-12.60 W	35-23-69.32 N	YES	Existing - Applicant/Partner Owned
Non-tower Cell Site	249 South Laurel Avenue	Charlotte	NC	28207	80-82-26.17 W	35-20-28.10 N	YES	Existing - Applicant/Partner Owned
Non-tower Cell Site	3210 North Davidson Street	Charlotte	NC	28205	80-80-54.19 W	35-24-71.98 N	YES	Existing - Applicant/Partner Owned
Non-tower Cell Site	1201 The Plaza	Charlotte	NC	28205	80-81-11.35 W	35-21-82.82 N	YES	Existing - Applicant/Partner Owned
Non-tower Cell Site	4529 McKee Road	Charlotte	NC	28270	80-76-10.15 W	35-06-50.86 N	YES	Existing - Applicant/Partner Owned
Non-tower Cell Site	2810 Wilkinson Boulevard	Charlotte	NC	28208	80-88-76.70 W	35-22-41.58 N	YES	Existing - Applicant/Partner Owned
Non-tower Cell Site	620 West 28th Street	Charlotte	NC	28206	80-82-44.59 W	35-25-12.11 N	YES	Existing - Applicant/Partner Owned
Non-tower Cell Site	420 Inwood Drive	Charlotte	NC	28209	80-87-50.83 W	35-17-38.05 N	YES	Existing - Applicant/Partner Owned
Non-tower Cell Site	4337 Glenwood Drive	Charlotte	NC	28208	80-89-50.01 W	35-25-48.01 N	YES	Existing - Applicant/Partner Owned
Non-tower Cell Site	114 North Sharon Road	Charlotte	NC	28211	80-79-75.78 W	35-17-61.34 N	YES	Existing - Applicant/Partner Owned
Non-tower Cell Site	3617 Frontenac Avenue	Charlotte	NC	28215	80-77-50.15 W	35-23-72.70 N	YES	Existing - Applicant/Partner Owned
Non-tower Cell Site	6623 Park South Drive	Charlotte	NC	28210	80-84-79.90 W	35-14-01.68 N	YES	Existing - Applicant/Partner Owned
Non-tower Cell Site	5308 Morris Field Drive	Charlotte	NC	28208	80-93-18.57 W	35-21-33.03 N	YES	Existing - Applicant/Partner Owned
Non-tower Cell Site	2337 Keller Avenue	Charlotte	NC	28216	80-85-61.21 W	35-26-55.06 N	YES	Existing - Applicant/Partner Owned
Non-tower Cell Site	1016 Sardis Lane	Charlotte	NC	28270	80-78-21.93 W	35-13-79.92 N	YES	Existing - Applicant/Partner Owned
Non-tower Cell Site	9400 Nations Ford Road	Charlotte	NC	28273	80-89-22.22 W	35-12-99.41 N	YES	Existing - Applicant/Partner Owned
Non-tower Cell Site	1023 Little Rock Road	Charlotte	NC	28214	80-94-05.10 W	35-26-49.66 N	YES	Existing - Applicant/Partner Owned
Non-tower Cell Site	1917 West Sugar Creek	Charlotte	NC	28262	80-79-54.23 W	35-28-92.12 N	YES	Existing - Applicant/Partner Owned
Non-tower Cell Site	7400 East WT Harris Boulevard	Charlotte	NC	28213	80-72-30.95 W	35-21-94.40 N	YES	Existing - Applicant/Partner Owned
Non-tower Cell Site	7132 Pineville-Matthews Road	Charlotte	NC	28226	80-83-90.25 W	35-08-71.46 N	YES	Existing - Applicant/Partner Owned
Non-tower Cell Site	6741 Pleasant Grove Road	Charlotte	NC	28216	80-91-14.12 W	35-30-82.82 N	YES	Existing - Applicant/Partner Owned
Non-tower Cell Site	9231 South Tryon Street	Charlotte	NC	28273	80-94-06.21 W	35-13-22.36 N	YES	Existing - Applicant/Partner Owned
Non-tower Cell Site	111 Ken Hoffman Drive	Charlotte	NC	28262	80-75-04.61 W	35-30-27.60 N	YES	Existing - Applicant/Partner Owned
Non-tower Cell Site	8031 Old Statesville Road	Charlotte	NC	28269	80-82-57.92 W	35-33-19.48 N	YES	Existing - Applicant/Partner Owned
Non-tower Cell Site	2121 Margaret Wallace Road	Charlotte	NC	28205	80-73-71.08 W	35-16-40.46 N	YES	Existing - Applicant/Partner Owned
Non-tower Cell Site	4707 Belle Oaks Drive	Charlotte	NC	28217	80-93-54.59 W	35-19-25.07 N	YES	Existing - Applicant/Partner Owned
Non-tower Cell Site	3820 Ridge Road	Charlotte	NC	28269	80-76-41.92 W	35-37-37.60 N	YES	Existing - Applicant/Partner Owned
Non-tower Cell Site	9225 Bryant Farms Road	Charlotte	NC	28277	80-82-58.72 W	35-04-51.28 N	YES	Existing - Applicant/Partner Owned
Non-tower Cell Site	2001 Mt. Holly-Huntersville Rd	Charlotte	NC	28214	80-96-52.42 W	35-31-43.42 N	YES	Existing - Applicant/Partner Owned
Non-tower Cell Site	2824 Rocky River Road	Charlotte	NC	28215	80-71-80.19 W	35-27-60.93 N	YES	Existing - Applicant/Partner Owned

Facility Type	Address Line 1	City	State	Zip	Longitude	Latitude	Interconnection Available at this Location	Status in Proposed Network
Non-tower Cell Site	1120 Pavilion Boulevard	Charlotte	NC	28262	80-71-19.02 W	35-32-20.87 N	YES	Existing - Applicant/Partner Owned
Non-tower Cell Site	2325 W Mallard Crk Church Rd	Charlotte	NC	28262	80-76-10.55 W	35-33-81.46 N	YES	Existing - Applicant/Partner Owned
Non-tower Cell Site	13828 South Tryon Street	Charlotte	NC	28278	81-00-16.45 W	35-09-63.90 N	YES	Existing - Applicant/Partner Owned
Non-tower Cell Site	12100 Shopton Road West	Charlotte	NC	28278	81-00-38.89 W	35-14-47.22 N	YES	Existing - Applicant/Partner Owned
Non-tower Cell Site	8325 Providence Road	Charlotte	NC	28277	80-77-66.67 W	35-09-33.33 N	YES	Existing - Applicant/Partner Owned
Non-tower Cell Site	9720 Harrisburg Road	Charlotte	NC	28215	80-66-72.22 W	35-23-86.11 N	YES	Existing - Applicant/Partner Owned
Connection to Service Provider	3400 Griffith Street	Charlotte	NC	28203	-80.8753188	35.2028156	Yes	Existing - Applicant/Partner Owned
Connection to Service Provider	550 East 8th Street	Charlotte	NC	28202	-80.8341391	35.2263359	Yes	Existing - Applicant/Partner Owned
Connection to Service Provider	201 W. 10th Street	Charlotte	NC	28202	-80.838629	35.232731	Yes	Existing - Applicant/Partner Owned
Connection to Service Provider	1225 S. Caldwell Street	Charlotte	NC	28203	-80.8506969	35.2155926	Yes	Existing - Applicant/Partner Owned
Connection to Service Provider	2204 Caronia Street	Charlotte	NC	28208	-80.895399	35.207589	Yes	Existing - Applicant/Partner Owned
Connection to Service Provider	1425 Clanton Road	Charlotte	NC	28208	-80.894811	35.206664	Yes	Existing - Applicant/Partner Owned
Connection to Service Provider	2305 Farmer Street	Charlotte	NC	28208	-80.8953387	35.2094763	Yes	Existing - Applicant/Partner Owned
Connection to Service Provider	1620 Brooksvale Street	Charlotte	NC	28208	-80.921549	35.20826	Yes	Existing - Applicant/Partner Owned
Connection to Service Provider	2600 N. Pine Street	Charlotte	NC	28206	-80.818962	35.249998	Yes	Existing - Applicant/Partner Owned
Connection to Service Provider	6513 Leafcrest Lane	Charlotte	NC	28210	-80.8613974	35.1473695	Yes	Existing - Applicant/Partner Owned
Connection to Service Provider	304 Green Needles Ct	Charlotte	NC	28217	-80.8929169	35.1697889	Yes	Existing - Applicant/Partner Owned
Connection to Service Provider	1428 Axminster Ct	Charlotte	NC	28210	-80.8734957	35.1347648	Yes	Existing - Applicant/Partner Owned
Connection to Service Provider	1000 Baxter Street	Charlotte	NC	28204	-80.839763	35.213333	Yes	Existing - Applicant/Partner Owned
Connection to Service Provider	5800 Fairview Road	Charlotte	NC	28210	-80.842943	35.151343	Yes	Existing - Applicant/Partner Owned
Connection to Service Provider	401 Baldwin Avenue	Charlotte	NC	28204	-80.8315112	35.2100436	Yes	Existing - Applicant/Partner Owned
Connection to Service Provider	3124 Leaside Lane	Charlotte	NC	28209	-80.8562669	35.1882292	Yes	Existing - Applicant/Partner Owned
Connection to Service Provider	201 Frazier Avenue	Charlotte	NC	28216	-80.8572424	35.2382864	Yes	Existing - Applicant/Partner Owned
Connection to Service Provider	321 N. Davidson Street	Charlotte	NC	28202	-80.835666	35.2254	Yes	Existing - Applicant/Partner Owned
Connection to Service Provider	426 N. Tryon Street	Charlotte	NC	28208	-80.83851	35.229553	Yes	Existing - Applicant/Partner Owned
Connection to Service Provider	6011 Florence Avenue	Charlotte	NC	28212	-80.7652908	35.1830764	Yes	Existing - Applicant/Partner Owned
Connection to Service Provider	5805 Olde Providence Rd	Charlotte	NC	28226	-80.7821764	35.1344287	Yes	Existing - Applicant/Partner Owned
Connection to Service Provider	7120/C Wallace Road	Charlotte	NC	28212	-80.7485205	35.1738314	Yes	Existing - Applicant/Partner Owned

Facility Type	Address Line 1	City	State	Zip	Longitude	Latitude	Interconnection Available at this Location	Status in Proposed Network
Connection to Service Provider	4005 Sunridge Lane	Charlotte	NC	28215	-80.7385724	35.2382126	Yes	Existing - Applicant/Partner Owned
Connection to Service Provider	1001 Margie Ann Drive	Charlotte	NC	28215	-80.725535	35.3023679	Yes	Existing - Applicant/Partner Owned
Connection to Service Provider	1032-F Coliseum Drive	Charlotte	NC	28205	-80.7924698	35.204735	Yes	Existing - Applicant/Partner Owned
Connection to Service Provider	225-D N Clarkson Street	Charlotte	NC	28202	-80.850009	35.2359409	Yes	Existing - Applicant/Partner Owned
Connection to Service Provider	1215 Rising Oak Drive	Charlotte	NC	28206	-80.83873	35.247601	Yes	Existing - Applicant/Partner Owned
Connection to Service Provider	3404 Dunn Commons Pkwy	Charlotte	NC	28216	-80.9496283	35.3255442	Yes	Existing - Applicant/Partner Owned
Connection to Service Provider	2305 Farmer Street	Charlotte	NC	28208	-80.8953387	35.2094763	Yes	Existing - Applicant/Partner Owned
Connection to Service Provider	2617 Pitts Drive	Charlotte	NC	28216	-80.8613958	35.2545288	Yes	Existing - Applicant/Partner Owned
Connection to Service Provider	2305 Farmer Street	Charlotte	NC	28208	-80.8953387	35.2094763	Yes	Existing - Applicant/Partner Owned
Connection to Service Provider	825 E. 16th Street	Charlotte	NC	28205	-80.8208787	35.2306446	Yes	Existing - Applicant/Partner Owned
Connection to Service Provider	901 E. 15th Street	Charlotte	NC	28205	-80.820824	35.228945	Yes	Existing - Applicant/Partner Owned
Connection to Service Provider	7000 Fernwood Drive	Charlotte	NC	28211	-80.7533818	35.1562958	Yes	Existing - Applicant/Partner Owned
Connection to Service Provider	5200 Beatties Ford Road	Charlotte	NC	28216	-80.8591284	35.3060649	Yes	Existing - Applicant/Partner Owned
Connection to Service Provider	3701 Prosperity Church Road	Charlotte	NC	28269	-80.7752637	35.3497014	Yes	Existing - Applicant/Partner Owned
Connection to Service Provider	7501 Old Pineville Road	Charlotte	NC	28217	-80.8796401	35.140934	Yes	Existing - Applicant/Partner Owned
Connection to Service Provider	9600 Idlewild Road	Charlotte	NC	28227	-80.7081749	35.1745585	Yes	Existing - Applicant/Partner Owned
Connection to Service Provider	940 Brevard Street	Charlotte	NC	28202	-80.8307913	35.2310565	Yes	Existing - Applicant/Partner Owned
Connection to Service Provider	831 Seigle Avenue	Charlotte	NC	28204	-80.8267752	35.2236322	Yes	Existing - Applicant/Partner Owned
Connection to Service Provider	6770 Broad Street	Charlotte	NC	28211	-80.9621043	35.1474031	Yes	Existing - Applicant/Partner Owned
Connection to Service Provider	6130 Pineburr Road	Charlotte	NC	28211	-80.7553434	35.1541189	Yes	Existing - Applicant/Partner Owned
Connection to Service Provider	6130 Pineburr Road	Charlotte	NC	28211	-80.7553434	35.1541189	Yes	Existing - Applicant/Partner Owned
Connection to Service Provider	5914 Fairmarket Place	Charlotte	NC	28215	-80.751173	35.250303	Yes	Existing - Applicant/Partner Owned
Connection to Service Provider	1509 Seneca Place	Charlotte	NC	28209	-80.848363	35.164448	Yes	Existing - Applicant/Partner Owned
Connection to Service Provider	6905 E WT Harris Blvd.	Charlotte	NC	28215	-80.73599	35.236427	Yes	Existing - Applicant/Partner Owned
Connection to Service Provider	2820 Oak Valley Lane	Charlotte	NC	28205	-80.7974	35.213823	Yes	Existing - Applicant/Partner Owned



ConnectMeck
Project Org Chart

BTOP Comprehensive Community Infrastructure Detailed Budget

Please complete the General Budget Overview and Detailed Project Costs worksheets.

Please refer to the Comprehensive Community Infrastructure Grant Guidance for detailed instructions on the completing this upload.

Applicants are required to provide this upload as an Excel file, and not to convert it to a PDF prior to upload. Applicants should not alter the layout of the provided templates, except to insert additional line-items as needed in the Detailed Project Costs worksheet.

Important Update - 3/19/2010: This template has been updated with the addition of a new column in the Detailed Project Costs worksheet. The new column, titled "Cash Match Percentage" allows Applicants to specify the percentage of the line item cost that will be provided by the cash match. This column is only relevant if "Cash Match" is selected in column C (the "Match" column). If "Cash Match" is selected in column C, Applicants should specify a percentage in the Cash Match Percentage field--100% means that the line item will be paid for entirely from the cash match, 0% means that it is paid for entirely from the federal request, any other amount will allocate the costs between the federal request and the cash match.

Note that *it is not required for Applicants to use this updated template*. Applicants that submit their detailed budget using the previously available template will not be penalized. In the previous version of this template, selecting "Cash Match" in column C indicates that 100% of the line item cost will be paid from the cash match.

General Budget Overview

Budget	Federal Funding Request	Matching Funds (Cash)	Matching Funds (In-Kind)	Budget TOTAL	Last Mile Allocation	Middle Mile Allocation	Allocated TOTAL
Network & Access Equipment (switching, routing, transport, access)	\$15,239,900			\$15,239,900		\$15,239,900.00	\$15,239,900
Outside Plant (cables, conduits, ducts, poles, towers, repeaters, etc.)	\$1,756,500			\$1,756,500		\$1,756,500.00	\$1,756,500
Buildings and Land – (new construction, improvements, renovations, lease)				\$0			\$0
Customer Premise Equipment (modems, set-top boxes, inside wiring, etc.)				\$0			\$0
Billing and Operational Support Systems (IT systems, software, etc.)				\$0			\$0
Operating Equipment (vehicles, office equipment, other)				\$0			\$0
Engineering/Professional Services (engineering design, project management, consulting, etc.)			\$460,200	\$460,200		\$460,200.00	\$460,200
Testing (network elements, IT system elements, user devices, test generators, lab furnishings, servers/computers, etc.)				\$0			\$0
Site Preparation				\$0			\$0
Other			\$5,436,000	\$5,436,000		\$5,436,000.00	\$5,436,000
TOTAL BROADBAND SYSTEM:	\$16,996,400	\$0	\$5,896,200	\$22,892,600	\$0	\$22,892,600	\$22,892,600
Cost Share Percentage:	74.24%	0.00%	25.76%				

DETAIL OF PROJECT COSTS

PLEASE COMPLETE THE TABLE BELOW FOR THE DIFFERENT CATEGORIES OF EQUIPMENT THAT WILL BE REQUIRED FOR COMPLETING THE PROJECT. EACH CATEGORY SHOULD BE BROKEN DOWN TO THE APPROPRIATE LEVEL FOR IDENTIFYING UNIT COST

	Match (Cash/In-kind)	Cash Match Percentage	Unit Cost	No. of Units	Total Cost	Last Mile Allocation	Middle Mile Allocation	Allocated Total	SF-424C Budget Category	Support of Reasonableness
NETWORK & ACCESS EQUIPMENT					\$15,239,990	\$0	\$15,239,990	\$15,239,990		
Switching	LTE eNodeB Switch/L3 Switch		\$65,000.00	30	\$1,950,000		\$1,950,000.00	\$1,950,000		
	LTE Core: WBTGW/WBC700		\$1,875,000.00	1	\$1,875,000		\$1,875,000.00	\$1,875,000		
					\$0			\$0		
Routing	EPC Network Routing for Core		\$700,000.00	1	\$700,000		\$700,000.00	\$700,000		
	EPC Network Routing for sites		\$30,833.00	30	\$924,990		\$924,990.00	\$924,990		
					\$0			\$0		
Transport	Motorola PTP600 5.8 Ghz		\$35,000.00	30	\$1,050,000		\$1,050,000.00	\$1,050,000		
					\$0			\$0		
					\$0			\$0		
Access	LTE700 Mhz Antenna Networks		\$28,000.00	30	\$840,000		\$840,000.00	\$840,000		
					\$0			\$0		
					\$0			\$0		
Other	LTE site Cabinets/wiring		\$20,000.00	30	\$600,000		\$600,000.00	\$600,000		
	LTE Power Site Converters		\$50,000.00	30	\$1,500,000		\$1,500,000.00	\$1,500,000		
	Systems Integration/Installation		\$5,800,000.00	1	\$5,800,000		\$5,800,000.00	\$5,800,000		
OUTSIDE PLANT					\$1,756,500	\$0	\$1,756,500	\$1,756,500		
Cables					\$0			\$0		
					\$0			\$0		
					\$0			\$0		
Conduits					\$0			\$0		
					\$0			\$0		
					\$0			\$0		
Ducts					\$0			\$0		
					\$0			\$0		
					\$0			\$0		
Poles					\$0			\$0		
					\$0			\$0		
					\$0			\$0		
Towers	(30) 80' Monopole Towers		49000	30	\$1,470,000		\$1,470,000.00	\$1,470,000		
					\$0			\$0		
					\$0			\$0		
Repeaters					\$0			\$0		
					\$0			\$0		
					\$0			\$0		
Other	Tower site civil work/installation		6975	30	\$209,250		\$209,250.00	\$209,250		
	Electrical Work		2575	30	\$77,250		\$77,250.00	\$77,250		
					\$0			\$0		

		Match (Cash/In-kind)	Cash Match Percentage	Unit Cost	No. of Units	Total Cost	Last Mile Allocation	Middle Mile Allocation	Allocated Total	SF-424C Budget Category	Support of Reasonableness
BUILDINGS						\$0	\$0	\$0	\$0		
New Construction						\$0			\$0		
						\$0			\$0		
						\$0			\$0		
Pre-Fab Huts						\$0			\$0		
						\$0			\$0		
						\$0			\$0		
Improvements &						\$0			\$0		
						\$0			\$0		
						\$0			\$0		
Other						\$0			\$0		
						\$0			\$0		
						\$0			\$0		
CUSTOMER PREMISE EQUIPMENT						\$0	\$0	\$0	\$0		
Modems						\$0			\$0		
						\$0			\$0		
						\$0			\$0		
Set Top Boxes						\$0			\$0		
						\$0			\$0		
						\$0			\$0		
Inside Writing						\$0			\$0		
						\$0			\$0		
						\$0			\$0		
Other						\$0			\$0		
						\$0			\$0		
						\$0			\$0		
BILLING SUPPORT AND OPERATIONS SUPPORT SYSTEMS						\$0	\$0	\$0	\$0		
Billing Support						\$0			\$0		
						\$0			\$0		
						\$0			\$0		
Customer Care						\$0			\$0		
						\$0			\$0		
						\$0			\$0		
Other Support						\$0			\$0		
						\$0			\$0		
						\$0			\$0		

		Match (Cash/In-kind)	Cash Match Percentage	Unit Cost	No. of Units	Total Cost	Last Mile Allocation	Middle Mile Allocation	Allocated Total	SF-424C Budget Category	Support of Reasonableness
OPERATING EQUIPMENT						\$0	\$0	\$0	\$0		
Vehicles						\$0			\$0		
						\$0			\$0		
						\$0			\$0		
Office Equipment /						\$0			\$0		
						\$0			\$0		
						\$0			\$0		
Other						\$0			\$0		
						\$0			\$0		
						\$0			\$0		
PROFESSIONAL SERVICES						\$460,200	\$0	\$460,200	\$460,200		
Engineering						\$0			\$0		
						\$0			\$0		
						\$0			\$0		
Project	Project Lead	In-kind Match		98	2080	\$203,840		\$203,840.00	\$203,840		
	Project Manager	In-kind Match		92	2080	\$191,360		\$191,360.00	\$191,360		
						\$0			\$0		
Consulting						\$0			\$0		
						\$0			\$0		
						\$0			\$0		
Other	Attorney	In-kind Match		325	200	\$65,000		\$65,000.00	\$65,000		
						\$0			\$0		
						\$0			\$0		
TESTING						\$0	\$0	\$0	\$0		
Network						\$0			\$0		
						\$0			\$0		
						\$0			\$0		
IT System						\$0			\$0		
						\$0			\$0		
						\$0			\$0		
User Devices						\$0			\$0		
						\$0			\$0		
						\$0			\$0		
Test Generators						\$0			\$0		
						\$0			\$0		
						\$0			\$0		
Lab						\$0			\$0		
						\$0			\$0		
						\$0			\$0		
Servers/Computer						\$0			\$0		
						\$0			\$0		
						\$0			\$0		

		Match (Cash/In-kind)	Cash Match Percentage	Unit Cost	No. of Units	Total Cost	Last Mile Allocation	Middle Mile Allocation	Allocated Total	SF-424C Budget Category	Support of Reasonableness
OTHER UPFRONT COSTS						\$5,436,000	\$0	\$5,436,000	\$5,436,000		
Site	Site acquisition	In-kind Match		135,900	40	\$5,436,000		5436000	\$5,436,000		
						\$0			\$0		
						\$0			\$0		
Other						\$0			\$0		
						\$0			\$0		
						\$0			\$0		
PROJECT TOTAL:						\$22,892,690	\$0	\$22,892,690	\$22,892,690		

SF-424C Cross-check Totals	
1. Admin and Legal	\$0
2. Land, structures	\$0
3. Relocation expenses	\$0
4. Architectural and engr.	\$0
5. Other archit. and engr.	\$0
6. Inspection fees	\$0
7. Site work	\$0
8. Demolition/removal	\$0
9. Construction	\$0
10. Equipment	\$0
11. Misc.	\$0

Matching Contribution Cross-check Totals	
Federal Funding Request	\$16,996,490
Cash Match Contribution	\$0
In-kind Match Contribution	\$5,896,200

Approach to allocating Last Mile and Middle Mile costs:
This is a middle mile project.



Comprehensive Community Infrastructure Budget Narrative

Applicant Name: Charlotte, NC

EasyGrants Number: 6251

Organization Type: Municiple Government

Proposed Period of Performance: 2010 - 2013

Total Project Costs: \$22,892,690

Total Federal Grant Request: \$16,996,490

Total Matching Funds (Cash): \$

Total Matching Funds (In-Kind): \$5,896,200

Total Matching Funds (Cash + In-Kind): \$5,896,200

Total Matching Funds (Cash + In-Kind) as Percentage of Total Project Costs: 25.76%

1. Administrative and legal expenses - \$65,000

- One City of Charlotte attorney to provide contract review and partnership document development.

- IN-KIND Source 1. Cost is calculated using standard legal rate X expected hours. The current rate is \$325/hr and it is expected that 200 hrs will be utilized for this project. This salary is paid directly from the City operating budget.

Attorney	In-kind Match		325	200	\$65,000
----------	---------------	--	-----	-----	----------

2. Land, structure, rights-of-way, appraisals, etc. - \$5,436,000

- This cost is to acquire the necessary site access for the placement of towers to support the wireless broadband network. The project will be entering into a 5yr initial lease to support the network. This is anticipated as an on-goig cost.

- IN-KIND Source 1. Cost is calculated using the current market rates for leasing property and tower access rights at a monthly rate multiplied by the initial 60 month term.

Site acquisition	In-kind Match		135,900	40	\$5,436,000
------------------	---------------	--	---------	----	-------------



3. Relocation expenses and payment - \$0

4. Architectural and engineering fees - \$0

5. Other architectural and engineering fees - \$0

6. Project inspection fees - \$0

7. Site work - \$286,500

- Construction of the foundations to support the 30 monopole towers and the necessary electrical work needed for the operation of the site equipment.

Tower site civil work/installation			6975	30	\$209,250
Electrical Work			2575	30	\$77,250

8. Demolition and removal - \$0

9. Construction - \$1,470,000

- Procurement and installation of 30 monopole towers to support the deployment of the wireless access nodes.

(30) 80' Monopole Towers			49000	30	\$1,470,000
--------------------------	--	--	-------	----	-------------

10. Equipment - \$15,239,900

LTE eNodeB Switch/L3 Switch			\$65,000.00	30	\$1,950,000
LTE Core: WBTGW/WBC700			\$1,875,000.00	1	\$1,875,000
					\$0
EPC Network Routing for Core			\$700,000.00	1	\$700,000
EPC Network Routing for sites			\$30,833.00	30	\$924,990
					\$0
Motorola PTP600 5.8 Ghz			\$35,000.00	30	\$1,050,000
					\$0
					\$0
LTE700 Mhz Antenna Networks			\$28,000.00	30	\$840,000
					\$0
					\$0
LTE site Cabinets/wiring			\$20,000.00	30	\$600,000
LTE Power Site Converters			\$50,000.00	30	\$1,500,000
Systems Integration/Installation			\$5,800,000.00	1	\$5,800,000



11. Miscellaneous - \$0

13. Contingencies - \$0

- Contingencies are an unallowable expenditures under BTOP.

15. Project (program) income - \$0

- The value for this line-item on the SF-424C is \$0. Please do not provide an estimated Project (program income) on the SF-424C.

Addendum

- Very few indirect costs are allowable through BTOP. If any allowable indirect costs and/or fringe benefits are included in the budget, please provide a copy of your existing Negotiated Indirect Cost Recovery Agreement (NICRA), if available. If the NICRA is applied accordingly in the budget, there is no need to justify the costs. If a NICRA is not available or is not consistent with the rates/calculations in the budget, please provide an explanation of how the amounts were calculated. Please clearly list the manner in which indirect costs are calculated in the budget.

Note: Verify that indirects are calculated correctly and are eligible BTOP costs. To clarify, reasonable indirect costs under BTOP are only allowable for Full Time Employees (FTEs) associated with the construction, deployment, or installation of facilities or equipment used to provide broadband service.

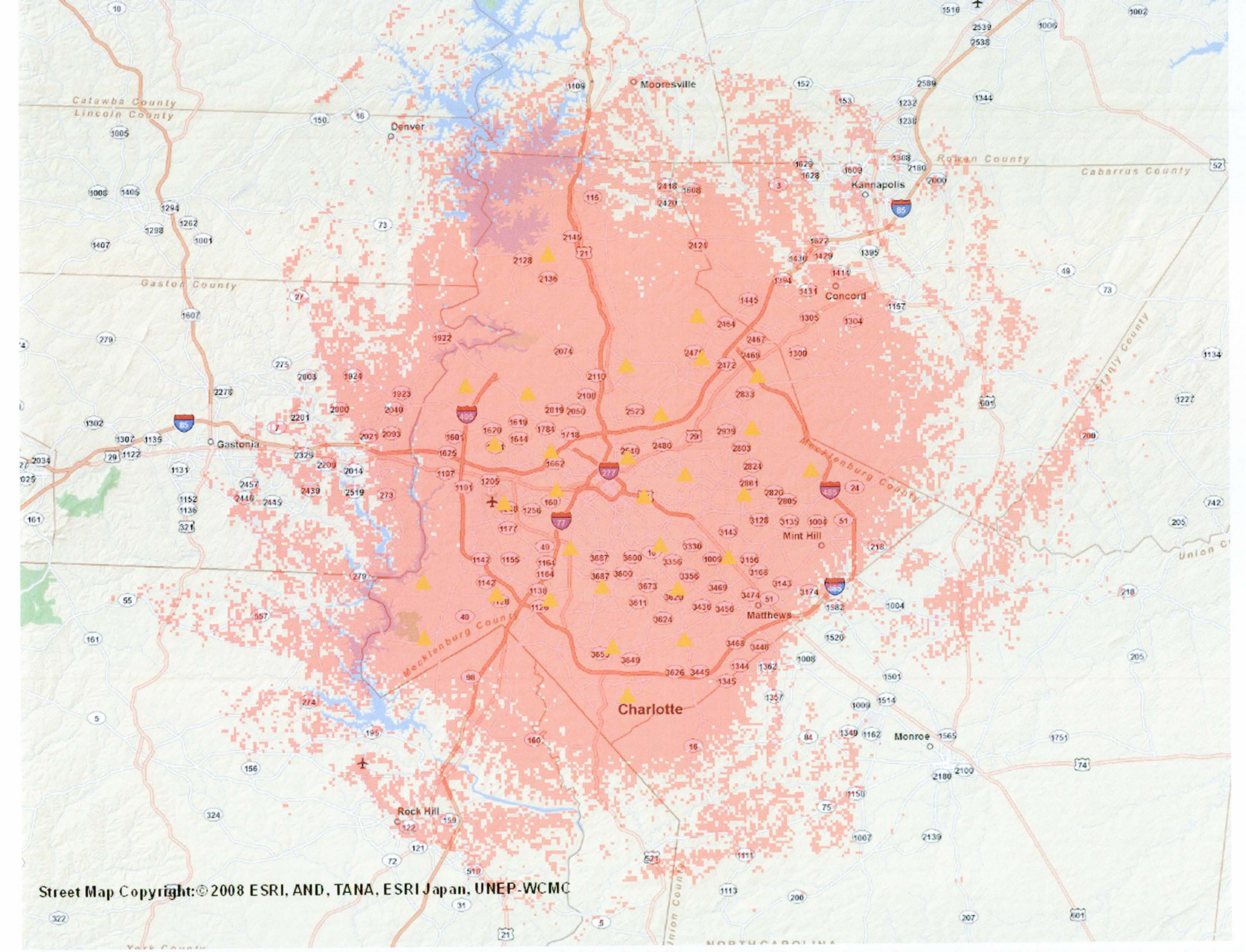
#. Example Budget Narrative - \$724,134 (Confirm to SF-424C)

\$100,000 of this category is estimated for legal expenses for contract reviews based on the average legal cost of (\$4) per mile for 25,000 miles.

\$134 of this category is estimated for legal court filings.

\$624,000 of this category is estimated for Project Engineering Staff which consists of a project manager and two (2) network engineers.

Staff	Hours	Years	Rate	Total Cost
Project Manager	2080	3	\$20/hr	\$124,800
Project Engineer	2080	3	\$30/hr	\$187,200
Civil Engineer	2080	3	\$50/hr	\$312,000
TOTAL:				\$624,000

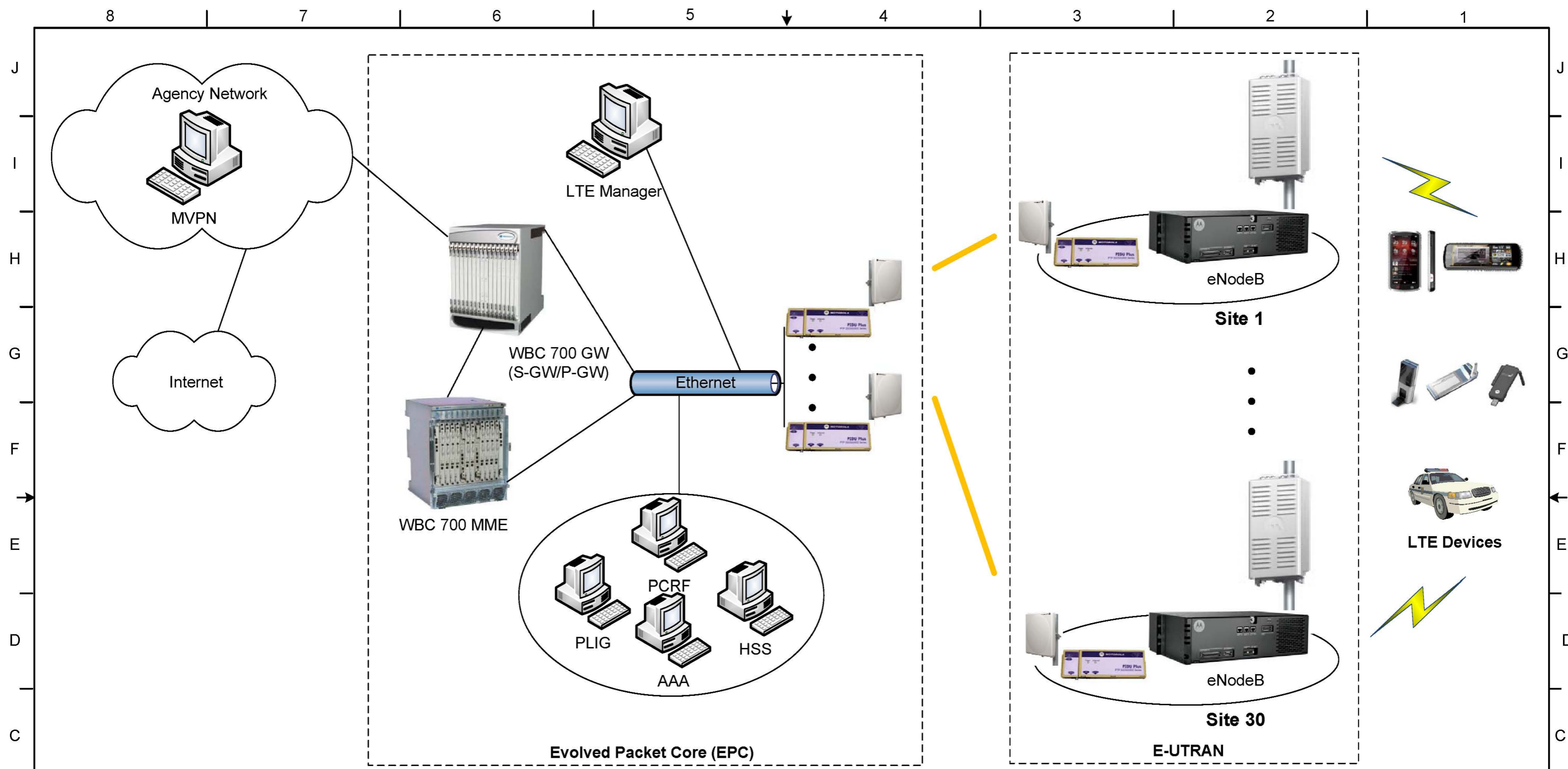


Street Map Copyright: © 2008 ESRI, AND, TANA, ESRI Japan, UNEP-WCMC

LTE ANTENNA SITE LOCATIONS

Site #	Site Name	Location Coordinates	Antenna Height Tx/Rx (feet)
1	Fire Station 8	35° 13' 06" N 80° 48' 39" W	80
2	Fire Station 10	35° 13' 27" N 80° 53' 13" W	80
3	Fire Station 11	35° 15' 05" N 80° 49' 29" W	80
4	Fire Station 12	35° 10' 24" N 80° 52' 30" W	80
5	Fire Station 13	35° 15' 27" N 80° 53' 31" W	80
6	Fire Station 14	35° 10' 33" N 80° 47' 51" W	80
7	Fire Station 15	35° 14' 14" N 80° 46' 30" W	80
8	Fire Station 16	35° 08' 24" N 80° 50' 52" W	80
9	Fire Station 17	35° 12' 48" N 80° 55' 56" W	80
10	Fire Station 19	35° 08' 17" N 80° 46' 55" W	80
11	Fire Station 20	35° 07' 45" N 80° 53' 33" W	80
12	Fire Station 21	35° 15' 53" N 80° 56' 24" W	80
13	Fire Station 22	35° 17' 22" N 80° 47' 46" W	80
14	Fire Station 23	35° 13' 09" N 80° 43' 25" W	80
15	Fire Station 24	35° 05' 15" N 80° 50' 20" W	80
16	Fire Station 25	35° 18' 29" N 80° 54' 42" W	80
17	Fire Station 26	35° 08' 03" N 80° 56' 21" W	80
18	Fire Station 28	35° 19' 54" N 80° 49' 34" W	80
19	Fire Station 29	35° 09' 52" N 80° 44' 15" W	80

20	Fire Station 31	35° 22' 26" N 80° 45' 51" W	80
21	Fire Station 32	35° 02' 42" N 80° 49' 31" W	80
22	Fire Station 33	35° 18' 54" N 80° 57' 52" W	80
23	Fire Station 34	35° 16' 33" N 80° 43' 03" W	80
24	Fire Station 35	35° 19' 20" N 80° 42' 43" W	80
25	Fire Station 36	35° 20' 14" N 80° 45' 39" W	80
26	Fire Station 37	35° 05' 46" N 81° 00' 08" W	80
27	Fire Station 38	35° 08' 41" N 81° 00' 14" W	80
28	Fire Station 39	35° 05' 36" N 80° 46' 36" W	80
29	Fire Station 40	35° 14' 23" N 80° 39' 58" W	80
30	North Tower	35° 25' 43" N 80° 53' 39" W	120



Orange indicates PTP Link



PROJECT: Charlotte R.A.D.I.O. Network				
TITLE: LTE Block Diagram				
CONTRACT	ENGINEER	PROGRAM MGR	SCALE: 1/2" = 1'	SIZE: A
PROGRAM	DRAWN	CHECKED	SHEET	REV: 0
FILE	DATE	CODE IDENT	DWG NO	

REV	DATE	ENGR	DESCRIPTION
C			
B			
A			
O			

BTOP Comprehensive Community Infrastructure Service Offerings and Competitor Data Template

Please complete the complete the following worksheets--either of the Last Mile or Middle Mile Service Offerings worksheets may be omitted if the applicant is not proposing to provide that type.

For both the Last Mile and Middle Mile Service Offerings worksheets, the service offerings should include all relevant tiers and markets (*e.g.* residential, business, wholesale). Applicants should ensure to include details on any services that would be offered at discounted rates to specific classes of customers (*e.g.* community anchor institutions or third party service providers).

In the Last Mile Service Offerings worksheet, applicants are required to provide estimated end user speeds. Average speeds should be the average sustained actual, non-burst end user speed that would be received during a peak hour. For purposes of calculating these speeds, applicants should utilize their subscriber projections for year eight of the project, and develop utilization projections that are consistent with any additional services the applicant proposes. For wireless broadband services, this speed should be an average of the speeds available across the entire cell. Beyond these general guidelines, due to the multiplicity of technical solutions that may be proposed, the applicants may use discretion to determine the most reasonable method to estimate actual speeds on their network. Applicants should explain the underlying methodology used to calculate the average speeds in the space provided.

In the Competitor Data worksheet, applicants are required to provide data on both last mile and middle mile service providers, regardless of whether the applicant proposes to offer last mile and middle mile services. In the column titled Service Areas Where Service Offered, applicants should list all of the Last Mile and Middle Mile Service Areas within their Proposed Project Area in which the listed services are available. Please ensure that the Service Areas are consistent with those provided within the application and the Service Areas upload. If the availability of the listed services is limited (*e.g.* the service is only available within a portion of a Last Mile or Middle Mile Service Area), note this in the Other Comments column.

In contrast to several other upload templates in this application, the data provided in these worksheets will NOT be subject to automated processing. These template worksheets are provided to demonstrate the level of data required and to provide a suggested format. Applicants may modify the template layouts in order to provide the most effective presentation of their specific project. Applicants should, however, ensure that they provide at least as much data as these templates require. To the extent that you modify these templates please ensure that the print layouts are adjusted so that rows do not break across pages in a manner that is difficult to understand. A PDF of this file will be automatically generated upon upload to EasyPrint and the print settings will be used to format the PDF file.

Middle Mile
provide services of

offerings should
applicants should be
particular
(riders).

estimated average
fast speeds that an
needs, applicants
subscriber
plans to offer.
available across an
solutions that may
manner in which
making assumptions

last mile and
for both last mile
, applicants
Funded Service
names are
. If the actual
part of the Last

via this template
intended to
applicants are free to
the data for
provide as much detail
to ensure that the
will be difficult to
grants, and the

Proposed Middle Mile Service Offerings

Name of Service Offering	Distance Band or Point to Point	Minimum Peak Load Network Bandwidth Capacity (Mbps)	Monthly/Yearly Pricing (\$)	Other Comments/Description/Features or Limitations
Public Safety	700 MHZ Countywide	1Mb	\$25/monthly	Countywide LTE wireless broadband network. Priority 1 Access
Education	700 MHZ Countywide	750Mbps	\$15/monthly	Countywide LTE wireless broadband network. Priority 2 Access
Public Service	700 MHZ Countywide	1Mb	\$25/monthly	Countywide LTE wireless broadband network. Priority 1 Access

Competitor Data

Competitor Data - Last Mile Service Providers

Service Provider	Service Areas Where Service Available	Technology Platform	Service Tiers	Downstream Speed	Monthly Pricing	Other Comments/Description/Features or Limitations

Competitor Data - Middle Mile Service Providers

Service Provider	Service Areas Where Service Available	Technology Platform	Service Tiers	Distance Band or Point-to-Point	Minimum Peak Load Network Bandwidth Capacity	Pricing	Other Comments/Description/Features or Limitations
Clearwire	Partial countywide	WiMax					Not LTE and compliant with National Public Safety Network. Not mobile.
AT&T	Partial countywide	3G	unlimited (5Gb)/mo		480 Kb	\$48/mo Government	Moving toward LTE in future Potential partner
Verizon	Partial countywide	3G	unlimited (5Gb)/mo		480 Kb	\$48/mo Government	Moving toward LTE in future Potential partner

BTOP Comprehensive Community Infrastructure Subscriber Estimates Template

Please complete the complete the Subscriber Estimates worksheet.

All applicants should indicate their 8-year subscriber forecasts with a breakdown by type of subscriber (residential/individual, businesses, community anchor institutions, third party service providers) and service offerings. The names of the service offerings should match those provided in the Service Offering and Competitor Data upload, enabling reviewers to easily cross-reference between the two documents. The Year 0 column should be used to denote any existing customers within the Proposed Funded Service Area. In addition, applicants that project that they will have third party service provider customers should include a line for parties "Served by Third Party Service Providers," showing an estimate of how many residential/individual, community anchor institution, and business customers will be served by those service providers, as demonstrated in the example below. At the bottom of the table, applicants should provide customer totals across all service offerings, with and without customers indirectly served through a third party service provider (if applicable). Applicants should also include a brief discussion of their methodology for deriving these estimates.

In contrast to several other upload templates in this application, the data provided via this template will NOT be subject to automated processing. Applicants are permitted to modify the template layout in order to provide the most effective presentation of the data for their specific project, but such modifications are generally discouraged. Applicants should, in any case, ensure that they provide at least as much detail as the provided template requires. To the extent that you modify these templates please ensure that the print layouts are adjusted so that rows do not break across pages in a manner that will be difficult to understand. A PDF of this file will be automatically generated upon upload to Easygrants, and the print settings will be used to format the PDF file.

EXAMPLE

Name of Service Offering	Customer Type	Year 0	Cumulative/ Net Add	Year 1				Year 2			
				Qtr 1	Qtr 2	Qtr 3	Qtr 4	Qtr 1	Qtr 2	Qtr 3	Qtr 4
Mega-Metro E - 100 Mbps	Community Anchor Inst.	0	Cumulative	0	0	0	0	5	10	17	26
			Net Add	0	0	0	0	5	5	7	9
	Business	0	Cumulative	0	0	0	0	12	27	52	82
			Net Add	0	0	0	0	12	15	25	30
	Third Party Service Provider	0	Cumulative	0	0	0	0	1	2	4	6
			Net Add	0	0	0	0	1	1	2	2
Served by Third Party Service Providers	Indirect - Res./Ind.	0	Cumulative	0	0	0	0	1000	3000	5000	10000
			Net Add	0	0	0	0	1000	2000	2000	5000
	Indirect - Business	0	Cumulative	0	0	0	0	2	8	18	30
			Net Add	0	0	0	0	2	6	10	12
	Indirect - Com. Anchor Inst.	0	Cumulative	0	0	0	0	0	2	3	5
			Net Add	0	0	0	0	0	2	1	2

Broadband Subscriber Estimates

Name of Service Offering	Customer Type	Year 0	Cumulative/ Net Add	Year 1				Year 2				Year 3				Year 4		
				Qtr 1	Qtr 2	Qtr 3	Qtr 4	Qtr 1	Qtr 2	Qtr 3	Qtr 4	Qtr 1	Qtr 2	Qtr 3	Qtr 4	Qtr 1	Qtr 2	
Public Safety	Community Anchor Inst.		Cumulative							750	1250	1500	2000	3000	3800	4500	5000	
			Net Add								750	500	250	500	1000	800	700	500
Public Service	Community Anchor Inst.		Cumulative							500	1000		2800	3300	3800	4600	5400	5500
			Net Add								500	500		1800	500	500	800	800
Education	Community Anchor Inst.		Cumulative							500	1500		2300	3300	5300	7300	9300	9800
			Net Add								500	1000		800	1000	2000	2000	2000
	Indirect - Res./Ind.		Cumulative															
			Net Add															
			Cumulative															
			Net Add															
			Cumulative															
			Net Add															
Cumulative Totals (excluding Indirect)	Residential/Individual		Total															
	Business		Total															
	Community Anchor Inst.		Total							500	2250	2750	6600	8600	12100	15700	19200	20300
	Third Party Service Provider		Total															
Cumulative Totals (including Indirect)	Residential/Individual		Total															
	Business		Total															
	Community Anchor Inst.		Total															

Table of Customer Types

Residential/Individual
Business
Community Anchor Inst.
Third Party Service Provider
Indirect - Res./Ind.
Indirect - Business
Indirect - Com. Anchor Inst.

Explanation of Methodology: Subscriber estimates are derived from direct discussions with anchor institutions. They based on the ability to construct the wireless broadband network by completing the core and activating sites as they are constructed. Adoption rates by anchor institutions will be based largely upon the availability of funds.

Name of Service Offering	Customer Type	Year 4		Year 5				Year 6				Year 7				Year 8		
		Qtr 3	Qtr 4	Qtr 1	Qtr 2	Qtr 3	Qtr 4	Qtr 1	Qtr 2	Qtr 3	Qtr 4	Qtr 1	Qtr 2	Qtr 3	Qtr 4	Qtr 1	Qtr 2	Qtr 3
Public Safety	Community Anchor Inst.	5200	5200	5200	5200	5200	5250	5250	5250	5250	5350	5350	5350	5350	5500	5500	5500	5500
		200	0	0	0	0	50	0	0	0	100	0	0	0	150	0	0	0
Public Service	Community Anchor Inst.	5500	5550	5550	5550	5550	5550	5550	5550	5550	5675	5675	5675	5675	5775	5775	5775	5775
		0	50	0	0	0	0	0	0	0	125	0	0	0	100	0	0	0
Education	Community Anchor Inst.	10200	10400	10500	10550	10600	10650	10800	10950	11100	11250	11400	11500	11650	11750	11850	11950	12050
		200	200	100	50	50	50	150	150	150	150	150	100	150	100	100	100	100
	Indirect - Res./Ind.																	
Cumulative Totals (excluding Indirect)	Residential/Individual Business																	
	Community Anchor Inst.	20900	21150	21250	21300	21350	21450	21600	21750	21900	22275	22425	22525	22675	23025	23125	23225	23325
	Third Party Service Provider																	
Cumulative Totals (including Indirect)	Residential/Individual Business																	
	Community Anchor Inst.																	

Table of Customer Types

Residential/Individual Business
Community Anchor Inst.
Third Party Service Provider
Indirect - Res./Ind.
Indirect - Business
Indirect - Com. Anchor Inst.

Name of Service Offering	Customer Type	Qtr 4
Public Safety	Community Anchor Inst.	5600 100
Public Service	Community Anchor Inst.	5750 75
Education	Community Anchor Inst.	12150 100
	Indirect - Res./Ind.	
Cumulative Totals (excluding Indirect)	Residential/Individual Business	
	Community Anchor Inst.	23500
	Third Party Service Provider	
Cumulative Totals (including Indirect)	Residential/Individual Business	
	Community Anchor Inst.	

Table of Customer Types

Residential/Individual Business
Community Anchor Inst.
Third Party Service Provider
Indirect - Res./Ind.
Indirect - Business
Indirect - Com. Anchor Inst.

BTOP Comprehensive Community Infrastructure Project Plan and Build-out Timeline

Please complete the Project Plan and Build-out Timeline templates below. Note that these templates may be modified by applicants in order to provide the most effective presentation of the data for their specific project. Applicants should ensure, however, that they provide at least as much detail as the provided templates require.

For system stability reasons, it is recommended that you provide this upload in PDF format. This instruction page need not be included in the upload.

PROJECT PLAN

- Use the following table to list the major network build-out phases and milestones that can demonstrate that your entire project will be substantially complete by the end of Year 2 and fully complete by the end of Year 3. This is to be done at the aggregate level (combining all proposed funded service areas.)
- Indicated how the milestones listed below will demonstrate these completion objectives. The applicant should consider such project areas as: a) network design; b) securing all relevant licenses and agreements; c) site preparation; d) inside plant deployment; e) outside plan deployment; f) deployment of business & operational support systems; g) network testing; f) network operational. The applicant may provide any other milestones that it believes showcase progress.
- Project inception (Year 0) starts at the date when the applicant receives notice that the project has been approved for funding.
- In the table, provide any information (e.g., facts, analysis) to: a) demonstrate the reasonableness of these milestones; b) substantiate the ability to reach the milestones by the quarters indicated.

Time Period	Quarter	Milestones	Support for Reasonableness/Data Points
Year 0	-	<ul style="list-style-type: none"> • Contract Award • Finalize Network Design • Complete permitting • Complete licensing • Site Preparation Begins 	<ul style="list-style-type: none"> • Begin in the geographical area of the core and work outward with site work.
Year 1	Qtr. 1	<ul style="list-style-type: none"> • Begin Site Equipment Installation • Begin Installation of Backhaul Network • Begin Installation of Network Core 	<ul style="list-style-type: none"> • Installation of core and backhaul will allow for rolling deployment of access sites. • This can be conducted in parallel with the beginning of access site work.
	Qtr. 2	<ul style="list-style-type: none"> • Complete Site Work • Continue Site Equipment Installation • Begin Installation of Backhaul Network • Complete Installation of Network Core 	<ul style="list-style-type: none"> • Upon completion of the equipment in the network core configuration can begin while the initial backhaul connections are being installed and the initial sites are competed
	Qtr. 3	<ul style="list-style-type: none"> • Configuration of Network Core • Complete Installation of Backhaul Network • Continue Site Equipment Installation 	<ul style="list-style-type: none"> • Final configuration of the core and the initial sites, along with the completion of the backhaul network will allow for an initial network configuration to be made.
	Qtr. 4	<ul style="list-style-type: none"> • Complete Configuration of Network Core • Continue integration of sites to core • Begin network testing, security, routing, QOS, priority. 	<ul style="list-style-type: none"> • Final configuration completed and testing of the initial portion of the network including initial sites
Year 2	Qtr. 1	<ul style="list-style-type: none"> • Continue integration of sites 	<ul style="list-style-type: none"> •

		<ul style="list-style-type: none"> • Complete testing of network Core and initial sites, coverage, routing, handoff, load testing 	
	Qtr. 2	<ul style="list-style-type: none"> • Complete site integration • Complete testing of network. • Initiate service for partial subscriber base, non-public safety. 	<ul style="list-style-type: none"> • Program initial non-public safety subscriber in order to validate system operation and stability, approximately 1000 units.
	Qtr. 3	<ul style="list-style-type: none"> • Initiate services for Public Safety Organizations, non critical applications. • Expand service for non-public safety 	<ul style="list-style-type: none"> • Conclusion of all testing. • Begin initial public Safety deployment. Approximately 700 units.
	Qtr. 4	<ul style="list-style-type: none"> • Final network acceptance • Continue service expansion 	<ul style="list-style-type: none"> •
Year 3	Qtr. 1	<ul style="list-style-type: none"> • List all relevant milestones 	<ul style="list-style-type: none"> •
	Qtr. 2	<ul style="list-style-type: none"> • List all relevant milestones 	<ul style="list-style-type: none"> •
	Qtr. 3	<ul style="list-style-type: none"> • List all relevant milestones 	<ul style="list-style-type: none"> •
	Qtr. 4	<ul style="list-style-type: none"> • List all relevant milestones 	<ul style="list-style-type: none"> •

BUILD-OUT TIMELINE

Complete the following schedule for *each* Last Mile or Middle Mile Service Area to note the degree of build-out, based on: a) infrastructure funds awarded; b) entities passed (households, businesses, and community anchor institutions.). In addition, please complete a schedule that aggregates the build-out timeline across all of the Proposed Funded Service Area.

Service Area	[Fill Name]												
	YEAR 0	YEAR 1				YEAR 2				YEAR 3			
		Qtr. 1	Qtr. 2	Qtr. 3	Qtr. 4	Qtr. 1	Qtr. 2	Qtr. 3	Qtr. 4	Qtr. 1	Qtr. 2	Qtr. 3	Qtr. 4
Infrastructure Funds													
Infrastructure Funds Advanced (estimate)	7,898,000	6,866,000	4,738,800				1,579,000		1,579,000				
Percentage of Total Funds	34.85%	30.30%	20.91%				6.97%		6.97%				
Entities Passed & %													
Households													
Percentage of Total Households													
Businesses													
Percentage of Total Businesses													
Community Anchor Institutions	0	0	0				176		170				
Percentage of Total Institutions							50.87%		49.17%				



P.O. Box 399
CORNELIUS, NC
28031

P 704 892 6031
F 704 896 2462
E TOWNHALL@CORNELIUS.ORG
HTTP://WWW.CORNELIUS.ORG

March 4, 2010

MAYOR

JEFFERY P. TARTE

MAYOR PRO-TEM

LYNETTE RINKER

COMMISSIONERS

JAMES BENSMAN

DAVID GILROY

THURMAN ROSS

CHUCK TRAVIS

TOWN MANAGER

ANTHONY ROBERTS

Nelson Baker, Project Manager
Mecklenburg County IST
Project Division Office
3205 Freedom Drive, Suite 107
Charlotte, NC 28208

Dear Mr. Baker:

The Town of Cornelius is committed to working in partnership with municipalities throughout Mecklenburg County to pursue the Federal Government's Broadband Technology Opportunities Program. There are a number of social and economic benefits that this federal opportunity could provide the Town of Cornelius with, in addition to Mecklenburg County.

As a partner, Cornelius offers several in-kind local government anchor institutions, which can serve as facility attachments for this project. The anchor institutions include Cornelius Town Hall, Police Department, Public Works facility, two fire stations, and all Town owned and operated park facilities. In addition, the Town can offer several utility poles for attachments. There are also several points of interest that the Town of Cornelius can utilize this project, including all public safety, general government, and Electricities vehicles.

The Town of Cornelius looks forward to working as a partner with Mecklenburg County and other municipalities to improve broadband access throughout the community.

Sincerely,

Anthony Roberts
Town Manager

March 10, 2010

Mr. Chuck Robinson
City of Charlotte
Business Support Services
600 E. 4th Street
Charlotte NC 28202

Dear Mr. Robinson:

We are proud to be a key collaborative partner in our community's effort to secure a Broadband Technology Opportunity Program grant. As a partner in this grant effort we are willing to allow the project to co-locate equipment at any of the properties we own across Charlotte.

As you know, the Charlotte Housing Authority currently provides subsidized housing to 7,674 families and affordable housing to another 836 families in 47 apartment communities and scattered site rental housing across the county. Currently, the average annual income for a family living in a conventional public housing development is \$8,208. The average annual income for a Section 8 family is \$10,551. We believe these families are either un- or underserved county residents when it comes to broadband access, due in large part to the ongoing cost associated with connecting to the Internet. This grant will help our residents and participants cross the digital divide.

We are actively working to increase the self-sufficiency of our family heads of household and believe providing low cost access to the Internet will enhance their ability to compete in a job market that, in an ever increasing fashion, requires employees at all levels to be Internet savvy and technology proficient. This grant will also provide affordable access to the Internet for the more than 9,000 children we serve as they seek to succeed in school.

We look forward to working with you to bring a comprehensive community broadband infrastructure to Mecklenburg County.

Sincerely,

Charles Woodyard
President and CEO



MECKLENBURG COUNTY

Clerk to the Board

[CERTIFICATION]

STATE OF NORTH CAROLINA COUNTY OF MECKLENBURG

Motion was made by Commissioner James, seconded by Commissioner Dunlap and carried 7-0 with Commissioners Bentley, Clarke, Cogdell, Dunlap, James, Leake, and Roberts voting yes, to approve the following item(s), with the exception of items 10, 11, 12, 15, 19, 21, and 22, to be voted upon separately:

(20) BROADBAND WIRELESS DATA NETWORK GRANT - AMERICAN RECOVERY & REINVESTMENT ACT 2009 (ARRA) –

- 1) Endorse the City of Charlotte's submission of a \$16,996,500 Broadband Technology Opportunities Program (BTOP) Grant from the American Recovery & Reinvestment Act of 2009 (ARRA) to construct a regional wireless 4G (LTE) network.
- 2) Authorize the County Manager to negotiate and execute the Consortium Agreement to be developed contingent upon the grant being awarded.

I, Janice S. Paige, Clerk to the Board of County Commissioners of Mecklenburg County, DO HEREBY CERTIFY that the foregoing motion was adopted by the Board of County Commissioners of Mecklenburg County, North Carolina, in a meeting held March 2, 2010, to be recorded in full in the minutes of March 2, 2010, Minute Book 44.

Witness my hand and the official seal of said Board, this 3rd day of March 2010.


Janice S. Paige
Clerk to the Board

PEOPLE • PRIDE • PROGRESS • PARTNERSHIPS

600 East Fourth Street • Charlotte, North Carolina 28202-2835 • (704) 336-2472 • Fax (704) 336-5887
www.MecklenburgCountyNC.gov



CENTRAL PIEDMONT COMMUNITY COLLEGE

March 2, 2010

Chuck Robinson
City of Charlotte
Business Support Service
600 E 4th Street
Charlotte, NC 28202

Dear Mr. Robinson:

Central Piedmont Community College (CPCC) enthusiastically endorses the City of Charlotte's *Broadband Technology Opportunities Program – Comprehensive Community Infrastructure* application submitted to the National Telecommunications and Information Administration. CPCC is very excited about collaborating with the City of Charlotte, the County of Mecklenburg and several anchor institutions to improve broadband access to underserved individuals in the Charlotte region.

Access to broadband service has become a necessity for everyday citizens to conduct the day-to-day business of their lives, but it also improves the *quality* of those lives. The availability of broadband service provides individuals with greater access to higher education and career advancement through online courses and degree programs. Online courses and academic programs remove barriers for students who may lack transportation, care for children as a single parent, or may be working full or part-time. When individuals are able to access high quality, accessible training, they are able to obtain high paying jobs and achieve economic security.

As a partner in this Comprehensive Community Infrastructure project, CPCC will provide space for a roof antenna at each of its six campuses which are geographically distributed within Mecklenburg County. In addition, CPCC will work with the Comprehensive Community Infrastructure partnership to promote the availability of low-cost broadband service to its students.

Thank you for your consideration of this proposal, and for the opportunity to provide improved broadband service to underserved areas of the Charlotte region.

Sincerely,

A handwritten signature in black ink that reads 'Tony Zeiss'.

P. Anthony Zeiss, Ed.D.

P. Anthony Zeiss, Ed.D., President,
Disher Building
Phone: 704.330.6566, Fax: 704.330.5045

P.O. Box 35009 Charlotte, NC 28235-5009
www.cpcc.edu

MATTHEWS POLICE DEPARTMENT
1201 CREWS ROAD
MATTHEWS, NC 28105



704 847-4069
FAX (704) 845-5824
WWW.MATTHEWSPOLICE.ORG

March 5, 2010

Mr. Chuck Robinson
Business Support Services
City of Charlotte
600 East 4th Street
Charlotte, North Carolina 28202

Dear Mr. Robinson,

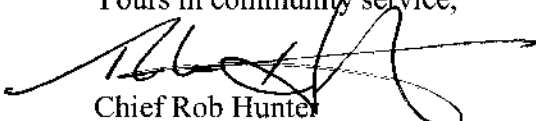
On behalf of the Town of Matthews and its public safety departments, the Matthews Police Department and the Matthews Fire and Emergency Medical Services Department, I am writing to again voice our support for the City of Charlotte's *Broadband Technology Opportunities Program – Comprehensive Community Infrastructure* application submitted to the National Telecommunications and Information Administration.

Access to broadband services to support our wireless mobile police dispatching and the wireless access of our departments' records management and computer-aided-dispatch data is critical in the deployment of public safety services to our citizens. The system being planned by the City of Charlotte will provide the Town of Matthews great opportunities to provide this service at a reasonable cost.

As a partner in this project, my staff will provide assistance in the location of sites for placement of system-critical equipment as well as guidance and assistance in the local zoning conditions necessary in the placement of this equipment.

I appreciate the efforts of the City of Charlotte in bringing this initiative to fruition and my staff stands ready to assist in any way.

Yours in community service,


Chief Rob Hunter
Matthews Police Department

BTOP Comprehensive Community Infrastructure Project Plan and Build-out Timeline

Please complete the Project Plan and Build-out Timeline templates below. Note that these templates may be modified by applicants in order to provide the most effective presentation of the data for their specific project. Applicants should ensure, however, that they provide at least as much detail as the provided templates require.

For system stability reasons, it is recommended that you provide this upload in PDF format. This instruction page need not be included in the upload.

PROJECT PLAN

- Use the following table to list the major network build-out phases and milestones that can demonstrate that your entire project will be substantially complete by the end of Year 2 and fully complete by the end of Year 3. This is to be done at the aggregate level (combining all proposed funded service areas.)
- Indicated how the milestones listed below will demonstrate these completion objectives. The applicant should consider such project areas as: a) network design; b) securing all relevant licenses and agreements; c) site preparation; d) inside plant deployment; e) outside plan deployment; f) deployment of business & operational support systems; g) network testing; f) network operational. The applicant may provide any other milestones that it believes showcase progress.
- Project inception (Year 0) starts at the date when the applicant receives notice that the project has been approved for funding.
- In the table, provide any information (e.g., facts, analysis) to: a) demonstrate the reasonableness of these milestones; b) substantiate the ability to reach the milestones by the quarters indicated.

Time Period	Quarter	Milestones	Support for Reasonableness/Data Points
Year 0	-	<ul style="list-style-type: none"> • Contract Award • Finalize Network Design • Complete permitting • Complete licensing • Site Preparation Begins 	•
Year 1	Qtr. 1	<ul style="list-style-type: none"> • Begin Site Equipment Installation • Begin Installation of Backhaul Network • Begin Installation of Network Core 	•
	Qtr. 2	<ul style="list-style-type: none"> • Complete Site Work • Continue Site Equipment Installation • Begin Installation of Backhaul Network • Complete Installation of Network Core 	•
	Qtr. 3	<ul style="list-style-type: none"> • Configuration of Network Core • Begin Installation of Backhaul Network • Continue Site Equipment Installation 	•
	Qtr. 4	<ul style="list-style-type: none"> • Complete Configuration of Network Core • Begin integration of initial sites to core • Begin network testing, security, routing, QOS, priority. 	•
Year 2	Qtr. 1	<ul style="list-style-type: none"> • Continue integration of sites • Complete testing of network Core and initial sites, coverage, 	•

		routing, handoff, load testing	
	Qtr. 2	<ul style="list-style-type: none"> • Complete site integration • Complete testing of network. • Initiate service for partial subscriber base, non-public safety. 	•
	Qtr. 3	<ul style="list-style-type: none"> • Initiate services for Public Safety Organizations, non critical applications. • Expand service for non-public safety 	•
	Qtr. 4	<ul style="list-style-type: none"> • Final network acceptance • Continue service expansion 	•
Year 3	Qtr. 1	<ul style="list-style-type: none"> • List all relevant milestones 	•
	Qtr. 2	<ul style="list-style-type: none"> • List all relevant milestones 	•
	Qtr. 3	<ul style="list-style-type: none"> • List all relevant milestones 	•
	Qtr. 4	<ul style="list-style-type: none"> • List all relevant milestones 	•

BUILD-OUT TIMELINE

Complete the following schedule for *each* Last Mile or Middle Mile Service Area to note the degree of build-out, based on: a) infrastructure funds awarded; b) entities passed (households, businesses, and community anchor institutions.). In addition, please complete a schedule that aggregates the build-out timeline across all of the Proposed Funded Service Area.

Service Area	[Fill Name]												
	YEAR 0	YEAR 1				YEAR 2				YEAR 3			
		Qtr. 1	Qtr. 2	Qtr. 3	Qtr. 4	Qtr. 1	Qtr. 2	Qtr. 3	Qtr. 4	Qtr. 1	Qtr. 2	Qtr. 3	Qtr. 4
Infrastructure Funds													
Infrastructure Funds Advanced (estimate)	7,898,000	6,866,000	4,738,800				1,579,000		1,579,000				
Percentage of Total Funds	34.85%	30.30%	20.91%				6.97%		6.97%				
Entities Passed & %													
Households													
Percentage of Total Households													
Businesses													
Percentage of Total Businesses													
Community Anchor Institutions	0	0	0				176		170				
Percentage of Total Institutions							50.87%		49.17%				

JAMES DENNIS BAUCOM

OBJECTIVE

Apply in depth, proven business skills, technical knowledge and strategic vision to deliver operational value for government agencies at all levels.

CAREER SUMMARY

Manager with more than 20+ years of experience in technology and management of personnel, equipment, and finances in positions of increasing scope and responsibility. Emphasis on planning, implementing and managing complex communication technology systems for government organizations while developing a business focus within the organization.

EDUCATION

Bachelor of Science - Business Management: Magna Cum Laud, 1997 - Park College Parkville, MO

QUALIFICATIONS

Consistent, proven success during 28 years of professional experience:

- ◆ Project/Program Management
- ◆ Operations and Maintenance
- ◆ Staff Supervision & Development
- ◆ Leadership
- ◆ Instruction and Training
- ◆ Customer Service & Support
- ◆ Strategic Planning

PROFESSIONAL ACHIEVEMENTS

PROJECT/PROGRAM MANAGEMENT:

Initiated and directed a twelve (12) month analysis of City of Charlotte and Mecklenburg County 800 MHz Public Safety Radio System. This culminated in the delivery of a ten-year strategic system expansion, upgrade plan and \$28.5 million in approved funding. Developed the business plan and participated in negotiation of, an interlocal agreement to consolidate the operation, maintenance and management of the Charlotte-Mecklenburg County 800 MHz Public Safety Radio System. Served as the City of Charlotte project manager on the following:

- ◆ 11-County Interoperability UASI Project
- ◆ RDI AP Mobile Data System
- ◆ Digital Microwave Upgrade
- ◆ Funding and design for P25 Digital radio project
- ◆ Radio Infrastructure Upgrade to Szolar 4.1
- ◆ Upgrade to GPS Launch Simulcast
- ◆ Transition of Radio Infrastructure Maintenance Support
- ◆ Planning and construction of a regional P25 radio network

LEADERSHIP:

- ◆ Initiated and led 12-month process to document and develop a ten-year strategic plan for the City of Charlotte's Radio Communication Network. Established ongoing process to coordinate strategic planning and implementation of a coordinated wireless data network.
- ◆ Developed and implemented strategies for the improvement of customer service delivery for the Radio Communications Department. These strategies resulted in improved equipment reliability, a reduction in service delivery times, and a reduction of per unit charges by 50%.
- ◆ Initiated and implemented a costing model to more effectively distribute operating costs by work function, thereby more equitably distributing costs to the customers on a fee-for-service basis.
- ◆ Developed a business case and organizational model for a countywide multi-agency consolidated radio network.
- ◆ Worked on the team to negotiate interlocal agreement and necessary service level agreements.
- ◆ Led technical development of a \$6 million successful grant application to provide voice and data interoperability for the Charlotte Metropolitan Region.
- ◆ Initiated and led reorganization of City of Charlotte Network Services, Telecommunications, Fiber Management, and Radio Communications into the Network Technology Services Division. The new division is focused on recommending and delivering the best communications technology solution for our customers needs.
- ◆ Developed successful technology, business, and political effort for establishing a multi-county public safety radio network.

FINANCIAL EXPERTISE:

- ◆ Performed research and developed the business case for changing the delivery of fixed site public safety communication equipment maintenance. This change resulted in savings of approximately \$400,000 annually to the City of Charlotte
- ◆ Developed and continue to manage a \$26.5 million multi-year capital budget.
- ◆ Develop and manage a \$3 million annual budget that recovers 100% of operating costs and capital debt
- ◆ Developed solution for consolidation of telecommunication (mobile phone) service and savings of over \$500,000 annually for the City
- ◆ Responsible for the development of a grant team that made the application and successful award of \$9.7 million in federal grants.

COMMUNICATION SKILLS:

- ◆ Prepared and delivered many types of written and oral presentations, classes, and reports to senior management and staff at all levels.
- ◆ Delivered presentations to elected local government bodies and industry groups
- ◆ Planned, organized, and executed numerous small and medium-sized planning meetings and technical conferences.
- ◆ Developed agendas, organized meeting format, arranged for facilities, and conducted the meetings.

EMPLOYMENT CHRONOLOGY

City of Charlotte	1998 - Present
Network Technology Services Director	2004 - Present
Radio Communications Director	1999 - 2004
Electronic Maintenance Supervisor	1998 - 1999
United States Marine Corps	1976-1998
Special Projects Coordinator Marine Aircraft Wing, Cherry Point, NC	1990-1996
Security Advisor/Police Chief Naval Station Pascagoula, MS	1990-1994
Senior Instructor Marine Corps Communication Electronics School 29 Palms, CA	1994-1991
Maintenance Management Chief Inspector Instructor Staff Indianapolis, IN	1991 - 1988
Electronic Maintenance Chief Second Battalion Twelfth Marine Regiment Okinawa	1988-1985
Electronic Maintenance Chief Marine Communication Squadron LI Ioro, CA	1985-1984

Professional Appointments/Committees

- President North Carolina Smartnet Users Network (2 terms)
- North Carolina Statewide Interoperability Executive Committee
- Federal Communication Commission Communication Security Reliability and Interoperability Committee

TRAINING:

- ◆ Facilitative Leadership, 2006
- ◆ Dimensions in Leadership, 2003
- ◆ Quality and Excellence Supervisory Training (QUEST), 1998
- ◆ Team Skills, 1998
- ◆ Total Quality Management, 1997
- ◆ U.S. Government Clearance: Top Secret

B. Nelson Baker

Nelson.Baker@MecklenburgCountyNC.gov

Overview

25 years experience in the Information Technology Industry.

Served in the following roles: Project Manager, Team Leader, Application Consultant, Senior Systems Analyst and Programmer Analyst.

Strengths include, managing IT projects, providing daily project team leadership and support, business analysis, identifying business process improvements and application systems design and development.

Platforms

MS Client Server, .Net Framework, MS/SQL, HP3000
IBM 3270 Mainframe & Web Sphere, VSAM & DB2

Experience

2000 – Current
Project Manager
Senior Analyst
Mecklenburg County

Senior Project Manager (PM) on several City and County IT projects. In 2008, completed a large multi-department Tax System replacement project. PM for highly used .Net web application projects and the first Web Sphere Intranet/Internet web application. As a Sr. System Analyst managed an eCommerce Project for internet and phone Tax Payments. Led several legacy web enablement projects utilizing the Project Development Life Cycle methodology. Served as Project Team leader for support and enhancements to legacy applications on multiple platforms.

1998 - 2000
Consultant
SPC / Compuware

Developed CICS/VSAM/DB2 programs using IBM's Messaging to track Railroad FDI events. Coordinated with Railroads to send formatted FDI messages.

1995 - 1998
Sr. Analyst
Team Leader
Mecklenburg County
Criminal Justice Team

Successfully Led a team of five to develop a new IBM Mainframe Jail System for the Sheriff's Office. Led the design and development of major system changes before the opening of a new jail facility. Duties included management reporting, system design and defining staff workloads. Served on many departmental improvement and software evaluation teams. Participated in many interviews and annual reviews.

1988-1995
System Analyst
Mecklenburg County
Tax Team

Led the Design and development efforts of several new Tax Systems utilizing three separate platforms (IBM mainframe, IIP mini, and C/S). Assisted in establishing departmental standards in application design and coding techniques. Evaluated and selected new hardware and software for the Tax Office. Designed a new Vehicle Tax system which influenced other counties and vendors on their designs. Designed a new C/S Veterans System. Designed and Developed New Individual and Business Property systems on a HP 3000 using object-oriented software.

1983-1988
Programmer Analyst
Mecklenburg County
DSS Team

Instrumental in the design, development and support of IBM mainframe systems for the Department of Social Services (DSS). Also developed a Medicaid Review system on a LAN. Converted many departmental systems from DOS/VSE to MVS. Provided enhancements and support for a Fleet Management system and a Finance system on an IBM mainframe.

Education

1987-Limestone College; BS, Business Administration/ Management
1983 Central Piedmont Cm. College, AAS, Business Data Processing