

For release 10:00 a.m. (EDT) Thursday, October 25, 2012

USDL-12-2121

Technical information: (202) 691-6170 • [iifstaff@bls.gov](mailto:iifstaff@bls.gov) • [www.bls.gov/iif/oshsum.htm](http://www.bls.gov/iif/oshsum.htm)

Media contact: (202) 691-5902 • [PressOffice@bls.gov](mailto:PressOffice@bls.gov)

## WORKPLACE INJURIES AND ILLNESSES – 2011

Nearly 3.0 million nonfatal workplace injuries and illnesses were reported by private industry employers in 2011, resulting in an incidence rate of 3.5 cases per 100 equivalent full-time workers, according to estimates from the Survey of Occupational Injuries and Illnesses (SOII) conducted by the U.S. Bureau of Labor Statistics. (See tables 1 and 2.) The rate reported for 2011 was unchanged for the first time in a decade during which the total recordable cases (TRC) injury and illness incidence rate among private industry employers declined significantly each year since 2002, when estimates from the SOII were first published using the current OSHA requirements for recording occupational injuries and illnesses.

### Key findings from the 2011 Survey of Occupational Injuries and Illnesses

- The incidence rate of injury and illness cases involving job transfer or restriction only among private industry establishments declined in 2011. Rates remained unchanged from 2010 for all other case types—cases with days away from work, job transfer, or restriction together; cases with days away from work; and other recordable cases not requiring time away from work. (See chart 1.)
- Agriculture, forestry, fishing and hunting was one of only two private industry sectors to experience an increase in the rate of injuries and illnesses in 2011 compared to 2010, driven by increases in cases in both the crop production and animal production (primarily dairy cattle and milk production) industries. The rate of injuries and illnesses for the accommodation and food services sector also rose in 2011, driven largely by an increase in other recordable cases in both limited-service restaurants and full-service restaurants.
- Two private industry sectors experienced declines in the rate of injuries and illnesses in 2011 compared to 2010—health care and social assistance (driven by declines both in hospitals and in nursing and residential care facilities) and retail trade (with large declines in cases among supermarkets and other grocery stores and several other industries).
- Manufacturing was the only private industry sector in 2011 in which the rate of job transfer or restriction only cases exceeded the rate of cases with days away from work. This continued a 14-year trend during which this was true. However, the rates for these two case types have been converging in recent years and differed by only 0.2 cases in 2011.
- The incidence rate of injuries only among private industry workers declined to 3.3 cases per 100 full-time workers in 2011—down from 3.4 cases in 2010. (See table 5.) In comparison, the incidence rate of illness cases was statistically unchanged in 2011. (See table 6a.)
- The TRC rate among state and local government workers of 5.7 cases per 100 full-time workers in 2011 was unchanged from 2010, but was still significantly higher than the private industry rate. The incidence rates for state government and local government individually also remained unchanged in 2011—4.6 cases and 6.1 cases per 100 full-time workers, respectively.

## **Private Industry Injuries and Illnesses**

*Injuries and illnesses by type of case.* More than one-half of the nearly 3.0 million private industry injury and illness cases reported nationally in 2011 were of a more serious nature that involved days away from work, job transfer, or restriction—commonly referred to as DART cases. These cases occurred at a rate of 1.8 cases per 100 full-time workers, unchanged from 2010. (See table 7.) Among the two components of DART cases, the rate for cases requiring job transfer or restriction declined from 0.8 to 0.7 cases per 100 workers, while the rate for cases involving days away from work remained unchanged in 2011 (1.1 cases). Other recordable cases—those not involving days away from work, job transfer, or restriction—accounted for the remaining more than 1.4 million injury and illness cases nationally in 2011 and occurred at a rate that was unchanged from 2010 at 1.7 cases per 100 full-time workers.

The TRC injury and illness incidence rate remained highest in 2011 among mid-size private industry establishments (those employing between 50 and 249 workers) and lowest among small establishments (those employing fewer than 11 workers) compared to establishments of other sizes. (See table 3 and chart 2.)

*Injuries.* More than 2.8 million (94.8 percent) of the nearly 3.0 million nonfatal occupational injuries and illnesses in 2011 were injuries. Among injuries, 2.1 million (75.2 percent) occurred in service-providing industries, which employed 82.5 percent of the private industry workforce covered by this survey. The remaining 0.7 million injuries (24.8 percent) occurred in goods-producing industries, which accounted for 17.5 percent of private industry employment covered by this survey in 2011.

*Illnesses.* Workplace illnesses accounted for 5.2 percent of the nearly 3.0 million injury and illness cases in 2011. (See table 6b.) The rate of workplace illnesses in 2011 (18.0 cases per 10,000 full-time workers) was not statistically different from the 2010 incidence rate (18.1 cases). Rates among individual illness categories also remained unchanged with the exception of poisonings, for which the rate declined to 0.2 cases per 10,000 full-time workers in 2011 compared to 0.3 cases in 2010.

Goods-producing industries accounted for 36.0 percent of all occupational illness cases in 2011, resulting in an incidence rate of 31.0 cases per 10,000 full-time workers—statistically unchanged from 31.8 cases in 2010. The manufacturing industry sector accounted for 30.3 percent of all private industry occupational illness cases, resulting in one of the highest illness incidence rates among all industry sectors of 40.8 cases per 10,000 full-time workers in 2011—statistically unchanged from 41.9 cases in 2010. Service-providing industries accounted for the remaining 64.0 percent of private industry illness cases and experienced a rate of 14.6 cases per 10,000 full-time workers in 2011—statistically unchanged from the prior year. Among service-providing industry sectors, health care and social assistance contributed 24.8 percent of all private industry illness cases and experienced an incidence rate of 30.5 cases per 10,000 full-time workers in 2011—statistically unchanged from 30.2 cases in 2010.

## **National Public Sector Estimates**

National public sector estimates covering approximately 18.5 million state and local government workers—for example, in police protection (NAICS 922120) and fire protection (NAICS 922160)—are available from the 2011 SOII for the fourth consecutive year.

Approximately 820,900 injury and illness cases were reported among state and local government workers in 2011, resulting in a rate of 5.7 cases per 100 full-time workers—significantly higher than the

rate among private industry workers (3.5 cases per 100 workers), and unchanged from the rate reported among these public sector workers in 2010. Nearly 4 in 5 injuries and illnesses reported in the public sector occurred among local government workers in 2011, resulting in an injury and illness rate of 6.1 cases per 100 full-time workers—significantly higher than the 4.6 cases per 100 full-time workers in state government. (See chart 3.)

## **State Estimates**

Private industry and public sector estimates are available for 41 participating states and for the District of Columbia for 2011. Data for establishments in the nine states for which individual estimates are unavailable are collected by BLS regional offices and used solely for the tabulation of national estimates. (See chart 4.) State estimates will be available online 10 business days following the release of national estimates; these estimates may also be requested prior to this from the respective state offices. (See [www.bls.gov/iif/oshstate.htm](http://www.bls.gov/iif/oshstate.htm) for state contacts.)

As compared to a year earlier, private industry TRC incidence rates among the 41 states and the District of Columbia for which estimates are available in 2011 declined in 7 states, rose in 1 state, and remained statistically unchanged in 32 states and in the District of Columbia (estimates for Pennsylvania for 2010 were not available for comparison).

The private industry TRC incidence rates were higher in 19 states than the national rate of 3.5 cases per 100 full-time workers in 2011, lower than the national rate in 12 states and in the District of Columbia, and not statistically different from the national rate in 10 states. Differences in industry mix account for at least some of the differences in rates across states.

## **Publication Tables and Supplemental Charts**

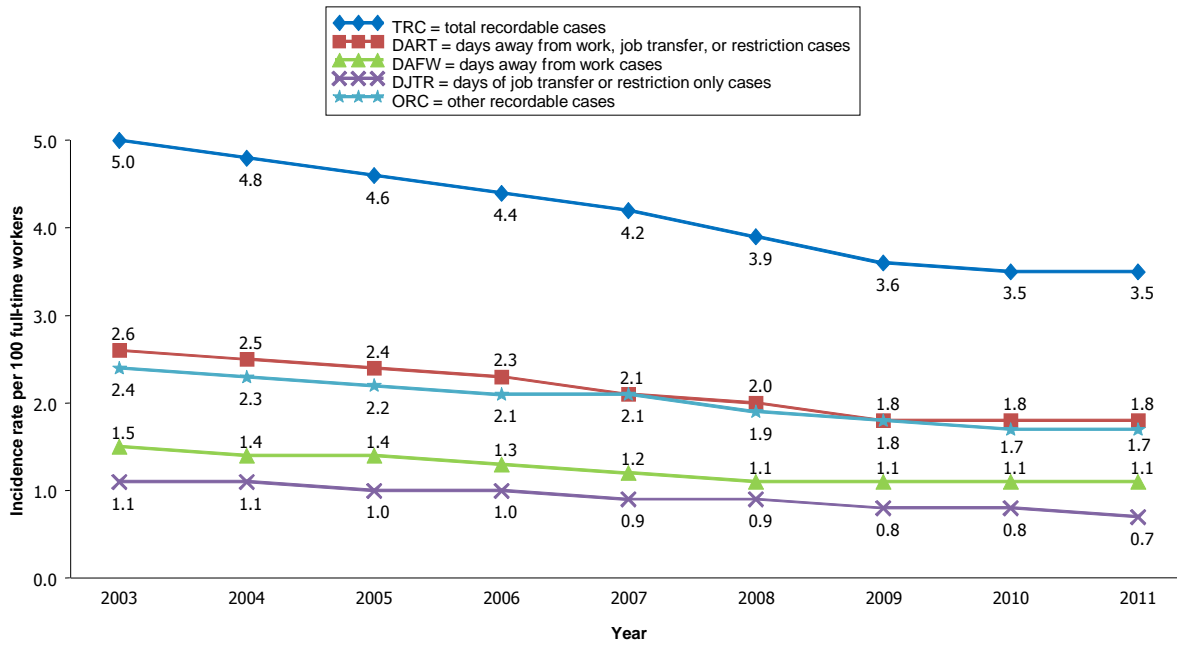
The Bureau of Labor Statistics (BLS) has generated estimates of injuries and illnesses for many of the 2-, 3-, 4-, 5-, and 6-digit industries as defined in the *2007 North American Industry Classification System* (NAICS) manual. A complete listing of these estimates is not available in this release. However, summary tables 1 and 2—providing incidence rates and counts of injuries and illnesses by detailed NAICS industry, case type, and ownership (e.g., total recordable cases or cases with days away from work in private industry), respectively—may be accessed electronically for the current and prior years from [www.bls.gov/iif/oshsum.htm](http://www.bls.gov/iif/oshsum.htm), requested from BLS staff at 202-691-6170, or requested by email at [IIFSTAFF@bls.gov](mailto:IIFSTAFF@bls.gov). Supplemental tables and charts illustrating trends among incidence rates and counts are also available from these sources.

## **Background of the Survey**

Second in a series of three releases from the BLS covering occupational safety and health statistics for the 2011 calendar year, this release follows the September preliminary report on fatal work-related injuries from the Census of Fatal Occupational Injuries (CFOI). A third release in November 2012 will provide case circumstances and worker characteristics from the SOII for nonfatal injury and illness cases requiring at least one day away from work to recuperate.

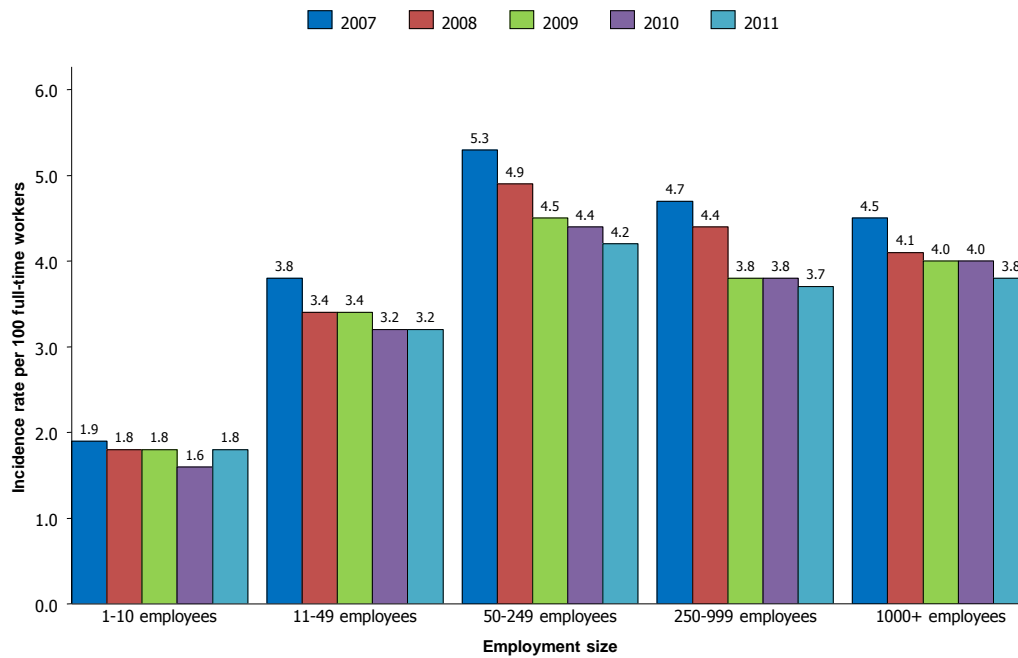
Additional background and methodological information regarding the BLS occupational safety and health statistics program, including information such as changes in the definition of recordable cases due to revised recordkeeping requirements in 2002 and the inherent underreporting of illnesses, can be found in Chapter 9 of the BLS Handbook of Methods at [www.bls.gov/opus/hom/pdf/homch9.pdf](http://www.bls.gov/opus/hom/pdf/homch9.pdf).

**Chart 1. Nonfatal occupational injury and illness incidence rates by case type, private industry, 2003-2011**



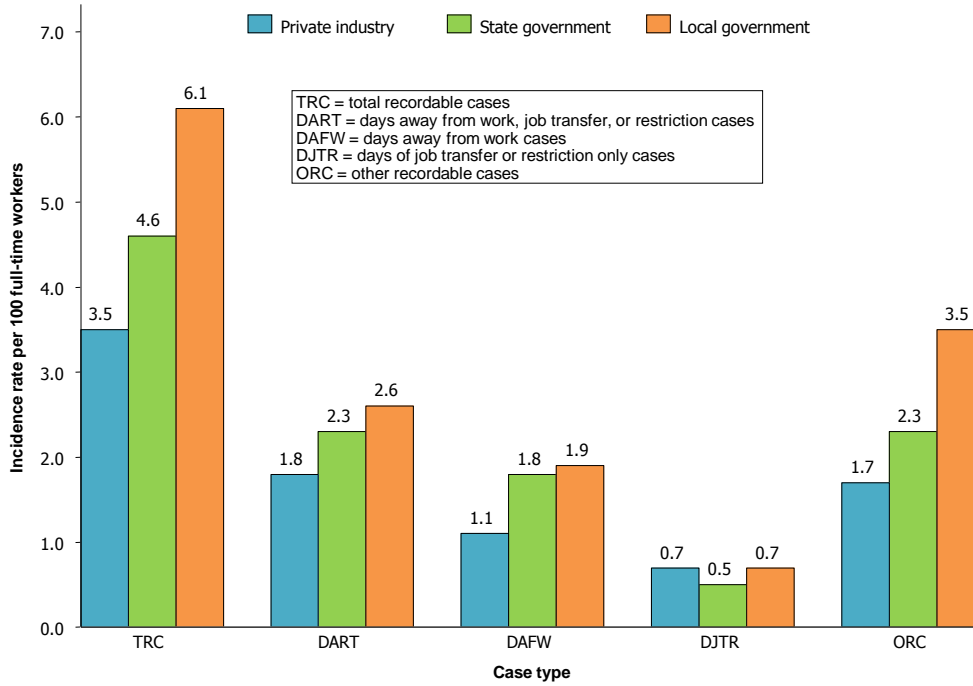
Source: U.S. Bureau of Labor Statistics, U.S. Department of Labor, October 2012

**Chart 2. Total recordable nonfatal occupational injury and illness incidence rates by employment size, private industry, 2007-2011**



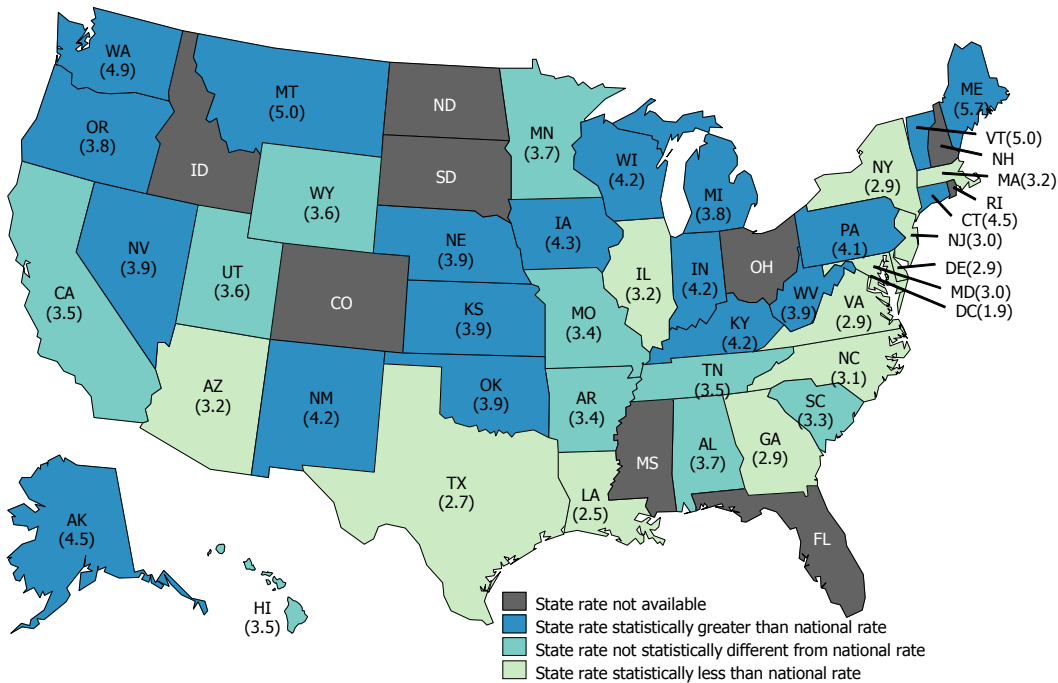
Source: U.S. Bureau of Labor Statistics, U.S. Department of Labor, October 2012

**Chart 3. Nonfatal occupational injury and illness incidence rates by case type and ownership, 2011**



Source: U.S. Bureau of Labor Statistics, U.S. Department of Labor, October 2012

**Chart 4. State nonfatal occupational injury and illness incidence rates\* compared to the national rate, private industry, 2011**



\* Total recordable case (TRC) incidence rate per 100 full-time workers  
 Source: U.S. Bureau of Labor Statistics, U.S. Department of Labor, October 2012

TABLE 1. Incidence rates<sup>1</sup> of nonfatal occupational injuries and illnesses by case type and ownership, selected industries, 2011

Industry <sup>2</sup>	NAICS code <sup>3</sup>	2011 Annual average employment <sup>4</sup> (thousands)	Total recordable cases	Cases with days away from work, job transfer, or restriction			Other recordable cases
				Total	Cases with days away from work <sup>5</sup>	Cases with job transfer or restriction	
<b>All industries including State and local government<sup>6</sup></b> .....		126,140.9	3.8	1.9	1.2	0.7	1.9
<b>Private industry<sup>6</sup></b> .....		107,654.2	3.5	1.8	1.1	.7	1.7
<b>Goods producing<sup>6</sup></b> .....		18,849.0	4.2	2.3	1.2	1.1	1.9
<b>Natural resources and mining<sup>6,7</sup></b> .....		1,644.6	4.0	2.4	1.4	.9	1.6
Agriculture, forestry, fishing and hunting <sup>6</sup> .....	11	974.9	5.5	3.2	1.8	1.4	2.3
Crop production <sup>6,8</sup> .....	111	413.8	5.5	3.2	1.7	1.5	2.2
Animal production <sup>6,8</sup> .....	112	163.6	6.7	4.1	2.3	1.8	2.6
Forestry and logging .....	113	57.1	5.0	3.3	2.9	.3	1.8
Fishing, hunting and trapping .....	114	8.6	4.8	1.6	1.1	—	3.2
Support activities for agriculture and forestry .....	115	331.7	4.8	2.7	1.5	1.1	2.2
Mining <sup>7</sup> .....	21	669.7	2.2	1.4	.9	.5	.9
Oil and gas extraction .....	211	149.4	.9	.5	.4	.1	.4
Mining (except oil and gas) <sup>9</sup> .....	212	208.1	3.0	1.9	1.5	.5	1.1
Support activities for mining .....	213	312.1	2.3	1.4	.8	.6	.9
<b>Construction</b> .....		5,576.7	3.9	2.1	1.5	.7	1.8
Construction .....	23	5,576.7	3.9	2.1	1.5	.7	1.8
Construction of buildings .....	236	1,259.6	3.6	1.9	1.2	.7	1.7
Heavy and civil engineering construction .....	237	826.4	3.5	2.0	1.2	.7	1.5
Specialty trade contractors .....	238	3,490.6	4.1	2.2	1.6	.6	1.9
<b>Manufacturing</b> .....		11,627.7	4.4	2.4	1.1	1.3	2.0
Manufacturing .....	31-33	11,627.7	4.4	2.4	1.1	1.3	2.0
Food manufacturing .....	311	1,458.8	5.6	3.5	1.5	2.1	2.1
Beverage and tobacco product manufacturing .....	312	186.2	6.9	5.3	—	2.5	1.6
Textile mills .....	313	120.8	3.5	2.0	.9	1.1	1.5
Textile product mills <sup>8</sup> .....	314	119.6	3.5	1.9	.9	1.0	1.5
Apparel manufacturing <sup>8</sup> .....	315	163.3	2.5	1.1	.6	.6	1.4
Leather and allied product manufacturing .....	316	29.9	6.1	3.4	1.7	1.7	2.7
Wood product manufacturing .....	321	338.1	6.5	3.5	1.9	1.6	3.0
Paper manufacturing .....	322	386.1	3.4	1.9	1.0	.9	1.5
Printing and related support activities .....	323	478.1	2.9	1.6	.8	.8	1.3
Petroleum and coal products manufacturing .....	324	109.6	2.0	1.0	.5	.6	.9

See footnotes at end of table.

TABLE 1. Incidence rates<sup>1</sup> of nonfatal occupational injuries and illnesses by case type and ownership, selected industries, 2011 — Continued

Industry <sup>2</sup>	NAICS code <sup>3</sup>	2011 Annual average employment <sup>4</sup> (thousands)	Total recordable cases	Cases with days away from work, job transfer, or restriction			Other recordable cases
				Total	Cases with days away from work <sup>5</sup>	Cases with job transfer or restriction	
Chemical manufacturing .....	325	808.2	2.4	1.4	0.7	0.7	1.0
Plastics and rubber products manufacturing <sup>8</sup> .....	326	632.2	4.9	2.8	1.3	1.5	2.1
Nonmetallic mineral product manufacturing .....	327	367.4	5.4	3.0	1.7	1.4	2.4
Primary metal manufacturing .....	331	375.9	6.1	3.5	1.8	1.7	2.7
Fabricated metal product manufacturing .....	332	1,312.3	5.6	2.6	1.3	1.3	3.0
Machinery manufacturing <sup>8</sup> .....	333	1,015.6	4.4	2.0	1.0	1.0	2.3
Computer and electronic product manufacturing .....	334	1,091.4	1.4	.7	.4	.3	.7
Electrical equipment, appliance, and component manufacturing .....	335	366.9	3.1	1.6	.6	1.0	1.5
Transportation equipment manufacturing <sup>8</sup> .....	336	1,337.6	5.2	2.7	1.1	1.6	2.5
Furniture and related product manufacturing <sup>8</sup> .....	337	353.9	5.3	2.7	1.3	1.5	2.6
Miscellaneous manufacturing .....	339	575.8	3.3	1.7	.8	.9	1.5
<b>Service providing</b> .....		88,805.3	3.3	1.6	1.0	.6	1.6
<b>Trade, transportation, and utilities<sup>10</sup></b> .....		24,924.6	3.9	2.3	1.3	1.0	1.6
Wholesale trade .....	42	5,580.0	3.2	1.9	1.1	.9	1.3
Merchant wholesalers, durable goods .....	423	2,762.9	2.8	1.5	.9	.7	1.3
Merchant wholesalers, nondurable goods .....	424	1,960.9	4.4	2.9	1.6	1.3	1.5
Wholesale electronic markets and agents and brokers .....	425	856.3	1.9	1.0	.6	—	.9
Retail trade .....	44-45	14,773.9	3.9	2.2	1.2	1.0	1.7
Motor vehicle and parts dealers .....	441	1,680.1	3.9	1.9	1.3	.6	2.0
Furniture and home furnishings stores .....	442	442.7	4.0	2.4	1.5	.9	1.5
Electronics and appliance stores .....	443	517.9	2.1	.8	.5	.3	1.3
Building material and garden equipment and supplies dealers .....	444	1,156.9	5.4	3.5	1.7	1.8	1.9
Food and beverage stores .....	445	2,859.7	4.7	2.7	1.4	1.2	2.0
Health and personal care stores .....	446	999.3	2.2	.9	.6	.3	1.3
Gasoline stations .....	447	832.9	2.5	1.1	.7	.4	1.4
Clothing and clothing accessories stores .....	448	1,424.1	2.6	.9	.7	.3	1.6
Sporting goods, hobby, book, and music stores .....	451	595.0	2.6	1.2	.6	.6	1.3
General merchandise stores .....	452	3,050.1	4.6	3.0	1.3	1.7	1.7
Miscellaneous store retailers .....	453	795.1	4.0	1.6	.9	.7	2.4
Nonstore retailers .....	454	420.1	2.9	1.7	1.1	.6	1.2
Transportation and warehousing <sup>10</sup> .....	48-49	4,017.8	5.0	3.4	2.3	1.1	1.6
Air transportation .....	481	450.5	7.3	5.5	4.3	1.2	1.8
Rail transportation <sup>10</sup> .....	482	—	1.9	1.4	1.3	.1	.5
Water transportation .....	483	61.5	2.0	1.6	1.2	.3	.4
Truck transportation .....	484	1,289.0	4.9	3.2	2.3	.9	1.7
Transit and ground passenger transportation .....	485	425.7	4.7	2.9	2.1	.8	1.8

See footnotes at end of table.

TABLE 1. Incidence rates<sup>1</sup> of nonfatal occupational injuries and illnesses by case type and ownership, selected industries, 2011 — Continued

Industry <sup>2</sup>	NAICS code <sup>3</sup>	2011 Annual average employment <sup>4</sup> (thousands)	Total recordable cases	Cases with days away from work, job transfer, or restriction			Other recordable cases
				Total	Cases with days away from work <sup>5</sup>	Cases with job transfer or restriction	
Pipeline transportation .....	486	41.7	1.5	1.2	—	0.2	0.4
Scenic and sightseeing transportation .....	487	28.1	3.5	2.1	1.7	.5	1.3
Support activities for transportation .....	488	560.5	3.8	2.5	1.6	.8	1.3
Couriers and messengers .....	492	523.4	6.6	4.5	2.6	1.9	2.1
Warehousing and storage .....	493	636.8	5.5	3.8	1.8	1.9	1.7
<b>Utilities</b> .....	22	552.9	3.5	1.9	1.0	.9	1.6
Utilities .....	221	552.9	3.5	1.9	1.0	.9	1.6
<b>Information</b> .....		2,692.6	1.6	.9	.6	.3	.7
Information .....	51	2,692.6	1.6	.9	.6	.3	.7
Publishing industries (except Internet) .....	511	747.9	1.3	.7	.4	.2	.6
Motion picture and sound recording industries .....	512	356.1	2.1	.6	.3	.2	1.5
Broadcasting (except Internet) .....	515	293.9	1.9	1.2	.6	.5	.7
Telecommunications <sup>8</sup> .....	517	901.1	2.1	1.4	1.0	.4	.7
Data processing, hosting, and related services <sup>8</sup> .....	518	244.2	.6	.3	.2	.1	.4
Other information services <sup>8</sup> .....	519	149.4	.6	.3	.2	.1	.3
<b>Financial activities</b> .....		7,505.6	1.4	.6	.4	.2	.7
Finance and insurance .....	52	5,543.4	.8	.3	.2	.1	.6
Monetary authorities - central bank .....	521	20.9	1.0	.4	.3	—	.6
Credit intermediation and related activities .....	522	2,549.2	1.1	.3	.3	.1	.7
Securities, commodity contracts, and other financial investments and related activities .....	523	822.8	—	.1	.1	( <sup>11</sup> )	.2
Insurance carriers and related activities .....	524	2,065.9	.7	.2	.2	( <sup>11</sup> )	.5
Funds, trusts, and other financial vehicles .....	525	84.6	.6	.2	.1	.1	.4
Real estate and rental and leasing .....	53	1,962.2	3.0	1.7	1.1	.6	1.3
Real estate <sup>8</sup> .....	531	1,430.4	2.8	1.6	1.1	.5	1.2
Rental and leasing services .....	532	506.4	3.7	2.2	1.1	1.1	1.5
Lessors of nonfinancial intangible assets (except copyrighted works) .....	533	25.4	.6	.2	.2	—	.4
<b>Professional and business services</b> .....		17,299.2	1.7	.8	.5	.3	.9
Professional, scientific, and technical services .....	54	7,711.7	1.0	.4	.3	.1	.7
Professional, scientific, and technical services <sup>8</sup> .....	541	7,711.7	1.0	.4	.3	.1	.7
Management of companies and enterprises .....	55	1,919.9	1.4	.6	.4	.2	.8

See footnotes at end of table.



TABLE 1. Incidence rates<sup>1</sup> of nonfatal occupational injuries and illnesses by case type and ownership, selected industries, 2011 — Continued

Industry <sup>2</sup>	NAICS code <sup>3</sup>	2011 Annual average employment <sup>4</sup> (thousands)	Total recordable cases	Cases with days away from work, job transfer, or restriction			Other recordable cases
				Total	Cases with days away from work <sup>5</sup>	Cases with job transfer or restriction	
Administrative and support and waste management and remediation services .....	56	7,667.6	2.7	1.5	1.0	0.5	1.2
Administrative and support services <sup>8</sup> .....	561	7,303.0	2.5	1.4	1.0	.4	1.2
Waste management and remediation services .....	562	364.6	4.9	3.0	2.0	1.0	1.9
<b>Education and health services</b> .....		19,065.4	4.7	2.1	1.3	.9	2.5
Educational services .....	61	2,580.1	2.1	.9	.6	.3	1.2
Educational services .....	611	2,580.1	2.1	.9	.6	.3	1.2
Health care and social assistance .....	62	16,485.3	5.0	2.3	1.4	1.0	2.7
Ambulatory health care services .....	621	6,116.5	2.7	.9	.7	.3	1.7
Hospitals .....	622	4,689.3	6.8	2.7	1.6	1.1	4.1
Nursing and residential care facilities .....	623	3,151.9	7.8	4.7	2.5	2.2	3.1
Social assistance .....	624	2,527.6	3.6	1.9	1.2	.7	1.7
<b>Leisure and hospitality</b> .....		13,514.8	4.0	1.6	1.0	.6	2.4
Arts, entertainment, and recreation .....	71	2,065.6	4.5	2.2	1.2	.9	2.4
Performing arts, spectator sports, and related industries .....	711	408.5	6.0	2.4	1.4	.9	3.7
Museums, historical sites, and similar institutions .....	712	129.7	4.5	2.3	1.5	.8	2.3
Amusement, gambling, and recreation industries .....	713	1,527.4	4.1	2.1	1.2	.9	2.1
Accommodation and food services .....	72	11,449.2	3.9	1.5	1.0	.5	2.4
Accommodation .....	721	1,830.1	5.1	2.8	1.5	1.3	2.3
Food services and drinking places .....	722	9,619.1	3.6	1.2	.8	.3	2.4
<b>Other services</b> .....		3,803.0	2.6	1.3	.9	.4	1.2
Other services, except public administration .....	81	3,803.0	2.6	1.3	.9	.4	1.2
Repair and maintenance .....	811	1,174.2	3.2	1.7	1.3	.4	1.5
Personal and laundry services .....	812	1,298.4	2.4	1.4	.8	.5	1.0
Religious, grantmaking, civic, professional, and similar organizations .....	813	1,330.4	2.0	.8	.5	.3	1.2
<b>State and local government<sup>6</sup></b> .....		18,486.7	5.7	2.5	1.9	.6	3.2
<b>State government<sup>6</sup></b> .....		4,807.9	4.6	2.3	1.8	.5	2.3
<b>Goods producing<sup>6</sup></b> .....		77.9	3.8	1.9	1.5	.3	1.9

See footnotes at end of table.

TABLE 1. Incidence rates<sup>1</sup> of nonfatal occupational injuries and illnesses by case type and ownership, selected industries, 2011 — Continued

Industry <sup>2</sup>	NAICS code <sup>3</sup>	2011 Annual average employment <sup>4</sup> (thousands)	Total recordable cases	Cases with days away from work, job transfer, or restriction			Other recordable cases
				Total	Cases with days away from work <sup>5</sup>	Cases with job transfer or restriction	
<b>Construction</b> .....		74.8	3.8	1.9	1.6	0.3	1.9
Construction .....	23	74.8	3.8	1.9	1.6	.3	1.9
<b>Service providing</b> .....		4,730.0	4.6	2.3	1.8	.5	2.3
<b>Education and health services</b> .....		2,670.6	4.4	2.1	1.5	.5	2.3
Educational services .....	61	2,055.1	2.6	1.0	.7	.3	1.6
Educational services .....	611	2,055.1	2.6	1.0	.7	.3	1.6
Health care and social assistance .....	62	615.5	8.7	4.7	3.7	1.0	4.0
Hospitals .....	622	339.9	9.2	4.8	3.6	1.2	4.4
Nursing and residential care facilities .....	623	139.6	13.1	7.4	5.9	1.5	5.7
<b>Public administration</b> .....		1,898.7	4.8	2.4	2.0	—	2.4
Public administration .....	92	1,898.7	4.8	2.4	2.0	—	2.4
Justice, public order, and safety activities .....	922	751.7	7.6	4.1	3.4	—	3.5
<b>Local government</b> <sup>6</sup> .....		13,678.9	6.1	2.6	1.9	.7	3.5
<b>Goods producing</b> <sup>6</sup> .....		107.4	8.7	4.7	3.2	1.5	4.0
<b>Construction</b> .....		106.4	8.7	4.7	3.2	1.5	4.0
Construction .....	23	106.4	8.7	4.7	3.2	1.5	4.0
Heavy and civil engineering construction .....	237	103.8	8.8	4.8	3.2	1.5	4.0
<b>Service providing</b> .....		13,571.4	6.1	2.6	1.9	.7	3.5
<b>Trade, transportation, and utilities</b> <sup>10</sup> .....		508.2	6.7	4.0	3.0	1.0	2.7
Transportation and warehousing <sup>10</sup> .....	48-49	266.0	7.3	4.6	3.9	.7	2.6
Transit and ground passenger transportation .....	485	215.6	7.4	5.0	4.4	.6	2.5
Utilities .....	22	238.9	6.2	3.5	2.1	1.4	2.7
Utilities .....	221	238.9	6.2	3.5	2.1	1.4	2.7

See footnotes at end of table.

TABLE 1. Incidence rates<sup>1</sup> of nonfatal occupational injuries and illnesses by case type and ownership, selected industries, 2011 — Continued

Industry <sup>2</sup>	NAICS code <sup>3</sup>	2011 Annual average employment <sup>4</sup> (thousands)	Total recordable cases	Cases with days away from work, job transfer, or restriction			Other recordable cases
				Total	Cases with days away from work <sup>5</sup>	Cases with job transfer or restriction	
<b>Education and health services</b> .....		8,590.8	5.1	1.8	1.3	0.5	3.3
Educational services .....	61	7,688.2	4.9	1.6	1.2	.4	3.2
Educational services .....	611	7,688.2	4.9	1.6	1.2	.4	3.2
Health care and social assistance .....	62	902.6	6.4	2.6	1.7	.9	3.8
Hospitals .....	622	649.0	6.8	2.4	1.6	.8	4.4
Nursing and residential care facilities .....	623	77.2	10.2	7.1	3.8	—	3.1
<b>Public administration</b> .....		3,950.9	7.9	3.8	2.8	1.0	4.0
Public administration .....	92	3,950.9	7.9	3.8	2.8	1.0	4.0
Justice, public order, and safety activities .....	922	985.7	10.3	5.6	4.7	.8	4.7

<sup>1</sup> The incidence rates represent the number of injuries and illnesses per 100 full-time workers and were calculated as: (N/EH) x 200,000, where

N = number of injuries and illnesses  
 EH = total hours worked by all employees during the calendar year  
 200,000 = base for 100 equivalent full-time workers (working 40 hours per week, 50 weeks per year)

<sup>2</sup> Totals include data for industries not shown separately.

<sup>3</sup> *North American Industry Classification System* — United States, 2007

<sup>4</sup> Employment is expressed as an annual average and is derived primarily from the BLS-Quarterly Census of Employment and Wages (QCEW) program.

<sup>5</sup> Days-away-from-work cases include those that result in days away from work with or without job transfer or restriction.

<sup>6</sup> Excludes farms with fewer than 11 employees.

<sup>7</sup> Data for Mining (Sector 21 in the *North American Industry Classification System* — United States, 2007) include establishments not governed by the Mine Safety and Health Administration rules and reporting, such as those in Oil and Gas Extraction and related support activities. Data for mining

operators in coal, metal, and nonmetal mining are provided to BLS by the Mine Safety and Health Administration, U.S. Department of Labor. Independent mining contractors are excluded from the coal, metal, and nonmetal mining industries. These data do not reflect the changes the Occupational Safety and Health Administration made to its recordkeeping requirements effective January 1, 2002; therefore, estimates for these industries are not comparable to estimates in other industries.

<sup>8</sup> Industry scope changed in 2009.

<sup>9</sup> Data for mining operators in this industry are provided to BLS by the Mine Safety and Health Administration, U.S. Department of Labor. Independent mining contractors are excluded. These data do not reflect the changes the Occupational Safety and Health Administration made to its recordkeeping requirements effective January 1, 2002; therefore, estimates for these industries are not comparable to estimates in other industries.

<sup>10</sup> Data for employers in railroad transportation are provided to BLS by the Federal Railroad Administration, U.S. Department of Transportation.

<sup>11</sup> Data too small to be displayed.

NOTE: Because of rounding, components may not add to totals. Dash indicates data do not meet publication guidelines.

SOURCE: U.S. Bureau of Labor Statistics, U.S. Department of Labor

TABLE 2. Numbers of nonfatal occupational injuries and illnesses by case type and ownership, selected industries, 2011

(thousands)

Industry <sup>1</sup>	NAICS code <sup>2</sup>	2011 Annual average employment <sup>3</sup>	Total recordable cases	Cases with days away from work, job transfer, or restriction			Other recordable cases
				Total	Cases with days away from work <sup>4</sup>	Cases with job transfer or restriction	
<b>All industries including State and local government<sup>5</sup></b> .....		126,140.9	3,807.4	1,903.8	1,181.3	722.5	1,903.6
<b>Private industry<sup>5</sup></b> .....		107,654.2	2,986.5	1,538.7	908.3	630.4	1,447.8
<b>Goods producing<sup>5</sup></b> .....		18,849.0	758.4	415.7	223.9	191.7	342.8
<b>Natural resources and mining<sup>5,6</sup></b> .....		1,644.6	65.4	38.8	23.3	15.5	26.6
Agriculture, forestry, fishing and hunting <sup>5</sup> .....	11	974.9	48.3	28.3	16.2	12.0	20.0
Crop production <sup>5,7</sup> .....	111	413.8	19.7	11.6	6.3	5.3	8.1
Animal production <sup>5,7</sup> .....	112	163.6	12.4	7.6	4.2	3.3	4.8
Forestry and logging .....	113	57.1	2.5	1.6	1.5	.2	.9
Fishing, hunting and trapping .....	114	8.6	.2	.1	( <sup>8</sup> )	—	.1
Support activities for agriculture and forestry .....	115	331.7	13.5	7.4	4.2	3.2	6.1
Mining <sup>6</sup> .....	21	669.7	17.2	10.6	7.1	3.5	6.6
Oil and gas extraction .....	211	149.4	1.4	.7	.6	.1	.7
Mining (except oil and gas) <sup>9</sup> .....	212	208.1	7.3	4.7	3.5	1.2	2.6
Support activities for mining .....	213	312.1	8.5	5.1	2.9	2.2	3.4
<b>Construction</b> .....		5,576.7	190.2	103.3	71.6	31.7	86.9
Construction .....	23	5,576.7	190.2	103.3	71.6	31.7	86.9
Construction of buildings .....	236	1,259.6	39.1	21.1	13.4	7.7	18.1
Heavy and civil engineering construction .....	237	826.4	27.6	15.6	9.7	5.9	12.0
Specialty trade contractors .....	238	3,490.6	123.5	66.6	48.5	18.1	56.9
<b>Manufacturing</b> .....		11,627.7	502.7	273.5	129.0	144.5	229.2
Manufacturing .....	31-33	11,627.7	502.7	273.5	129.0	144.5	229.2
Food manufacturing .....	311	1,458.8	80.5	50.8	20.9	29.9	29.7
Beverage and tobacco product manufacturing .....	312	186.2	12.5	9.6	—	4.5	2.9
Textile mills .....	313	120.8	4.2	2.4	1.1	1.3	1.8
Textile product mills <sup>7</sup> .....	314	119.6	3.8	2.1	1.0	1.1	1.7
Apparel manufacturing <sup>7</sup> .....	315	163.3	3.5	1.6	.8	.8	2.0
Leather and allied product manufacturing .....	316	29.9	1.7	.9	.5	.5	.7
Wood product manufacturing .....	321	338.1	20.9	11.3	6.0	5.2	9.7
Paper manufacturing .....	322	386.1	13.6	7.5	4.0	3.5	6.1

See footnotes at end of table.

TABLE 2. Numbers of nonfatal occupational injuries and illnesses by case type and ownership, selected industries, 2011 — Continued

(thousands)

Industry <sup>1</sup>	NAICS code <sup>2</sup>	2011 Annual average employment <sup>3</sup>	Total recordable cases	Cases with days away from work, job transfer, or restriction			Other recordable cases
				Total	Cases with days away from work <sup>4</sup>	Cases with job transfer or restriction	
Printing and related support activities .....	323	478.1	13.2	7.4	3.6	3.8	5.8
Petroleum and coal products manufacturing .....	324	109.6	2.3	1.2	.6	.6	1.1
Chemical manufacturing .....	325	808.2	19.3	11.3	5.6	5.8	8.0
Plastics and rubber products manufacturing <sup>7</sup> .....	326	632.2	31.0	17.7	8.4	9.3	13.3
Nonmetallic mineral product manufacturing .....	327	367.4	19.5	10.9	6.0	4.9	8.6
Primary metal manufacturing .....	331	375.9	24.3	13.8	7.0	6.8	10.5
Fabricated metal product manufacturing .....	332	1,312.3	74.4	34.7	17.6	17.0	39.7
Machinery manufacturing <sup>7</sup> .....	333	1,015.6	45.3	21.1	10.6	10.6	24.1
Computer and electronic product manufacturing .....	334	1,091.4	15.2	7.6	4.0	3.6	7.6
Electrical equipment, appliance, and component manufacturing .....	335	366.9	11.2	5.9	2.4	3.5	5.3
Transportation equipment manufacturing <sup>7</sup> .....	336	1,337.6	70.6	37.2	15.3	21.9	33.3
Furniture and related product manufacturing <sup>7</sup> .....	337	353.9	17.7	9.0	4.2	4.8	8.7
Miscellaneous manufacturing .....	339	575.8	18.1	9.6	4.6	5.0	8.5
<b>Service providing</b> .....		88,805.3	2,228.1	1,123.0	684.4	438.7	1,105.1
<b>Trade, transportation, and utilities<sup>10</sup></b> .....		24,924.6	808.3	478.6	277.5	201.1	329.7
Wholesale trade .....	42	5,580.0	171.2	102.6	57.2	45.5	68.5
Merchant wholesalers, durable goods .....	423	2,762.9	74.5	40.7	22.9	17.8	33.9
Merchant wholesalers, nondurable goods .....	424	1,960.9	81.8	54.1	29.6	24.6	27.6
Wholesale electronic markets and agents and brokers .....	425	856.3	14.9	7.9	4.7	—	7.0
Retail trade .....	44-45	14,773.9	424.6	235.1	126.5	108.5	189.6
Motor vehicle and parts dealers .....	441	1,680.1	60.6	29.8	20.8	9.0	30.7
Furniture and home furnishings stores .....	442	442.7	13.2	8.1	5.1	3.0	5.1
Electronics and appliance stores .....	443	517.9	8.4	3.2	1.9	1.3	5.2
Building material and garden equipment and supplies dealers .....	444	1,156.9	54.4	35.1	17.3	17.8	19.3
Food and beverage stores .....	445	2,859.7	95.0	54.3	29.2	25.1	40.7
Health and personal care stores .....	446	999.3	15.8	6.6	4.1	2.5	9.2
Gasoline stations .....	447	832.9	15.9	7.0	4.5	2.5	8.9
Clothing and clothing accessories stores .....	448	1,424.1	19.6	7.2	5.2	2.0	12.5
Sporting goods, hobby, book, and music stores .....	451	595.0	9.2	4.3	2.3	2.0	4.8
General merchandise stores .....	452	3,050.1	101.3	65.0	27.7	37.3	36.4
Miscellaneous store retailers .....	453	795.1	20.9	8.3	4.5	3.8	12.6
Nonstore retailers .....	454	420.1	10.4	6.2	3.9	2.3	4.2
Transportation and warehousing <sup>10</sup> .....	48-49	4,017.8	193.2	130.5	88.0	42.4	62.7
Air transportation .....	481	450.5	26.7	20.2	15.7	4.4	6.5

See footnotes at end of table.

TABLE 2. Numbers of nonfatal occupational injuries and illnesses by case type and ownership, selected industries, 2011 — Continued

(thousands)

Industry <sup>1</sup>	NAICS code <sup>2</sup>	2011 Annual average employment <sup>3</sup>	Total recordable cases	Cases with days away from work, job transfer, or restriction			Other recordable cases
				Total	Cases with days away from work <sup>4</sup>	Cases with job transfer or restriction	
Rail transportation <sup>10</sup> .....	482	—	4.5	3.2	2.9	0.3	1.2
Water transportation .....	483	61.5	1.4	1.1	.9	.2	.3
Truck transportation .....	484	1,289.0	68.0	44.1	32.2	11.9	23.9
Transit and ground passenger transportation .....	485	425.7	14.3	8.9	6.4	2.5	5.4
Pipeline transportation .....	486	41.7	.6	.5	—	.1	.1
Scenic and sightseeing transportation .....	487	28.1	.6	.4	.3	.1	.2
Support activities for transportation .....	488	560.5	19.6	12.8	8.5	4.3	6.8
Couriers and messengers .....	492	523.4	25.4	17.2	9.9	7.3	8.2
Warehousing and storage .....	493	636.8	32.2	22.1	10.8	11.3	10.1
Utilities .....	22	552.9	19.3	10.4	5.7	4.7	8.9
Utilities .....	221	552.9	19.3	10.4	5.7	4.7	8.9
<b>Information</b> .....		2,692.6	37.9	21.4	14.0	7.4	16.5
Information .....	51	2,692.6	37.9	21.4	14.0	7.4	16.5
Publishing industries (except Internet) .....	511	747.9	8.2	4.2	2.7	1.5	4.0
Motion picture and sound recording industries .....	512	356.1	5.1	1.4	.8	.6	3.7
Broadcasting (except Internet) .....	515	293.9	4.7	2.9	1.6	1.3	1.8
Telecommunications <sup>7</sup> .....	517	901.1	17.7	12.0	8.3	3.6	5.7
Data processing, hosting, and related services <sup>7</sup> .....	518	244.2	1.4	.6	.4	.2	.8
Other information services <sup>7</sup> .....	519	149.4	.8	.4	.2	.2	.4
<b>Financial activities</b> .....		7,505.6	89.9	40.6	27.4	13.2	49.3
Finance and insurance .....	52	5,543.4	41.2	12.7	9.8	2.9	28.5
Monetary authorities - central bank .....	521	20.9	.2	.1	.1	—	.1
Credit intermediation and related activities .....	522	2,549.2	24.3	7.7	5.8	1.8	16.6
Securities, commodity contracts, and other financial investments and related activities .....	523	822.8	—	.7	.6	.1	1.6
Insurance carriers and related activities .....	524	2,065.9	14.0	4.2	3.3	.9	9.8
Funds, trusts, and other financial vehicles .....	525	84.6	.5	.2	.1	.1	.3
Real estate and rental and leasing .....	53	1,962.2	48.7	27.9	17.5	10.4	20.8
Real estate <sup>7</sup> .....	531	1,430.4	31.7	17.9	12.6	5.4	13.7
Rental and leasing services .....	532	506.4	16.9	9.9	4.9	5.0	7.0
Lessors of nonfinancial intangible assets (except copyrighted works) .....	533	25.4	.1	( <sup>8</sup> )	( <sup>8</sup> )	—	.1

See footnotes at end of table.

TABLE 2. Numbers of nonfatal occupational injuries and illnesses by case type and ownership, selected industries, 2011 — Continued

(thousands)

Industry <sup>1</sup>	NAICS code <sup>2</sup>	2011 Annual average employment <sup>3</sup>	Total recordable cases	Cases with days away from work, job transfer, or restriction			Other recordable cases
				Total	Cases with days away from work <sup>4</sup>	Cases with job transfer or restriction	
<b>Professional and business services</b> .....		17,299.2	216.4	104.4	71.2	33.1	112.0
Professional, scientific, and technical services .....	54	7,711.7	70.0	25.7	17.6	8.1	44.4
Professional, scientific, and technical services <sup>7</sup> .....	541	7,711.7	70.0	25.7	17.6	8.1	44.4
Management of companies and enterprises .....	55	1,919.9	24.4	10.9	6.8	4.1	13.5
Administrative and support and waste management and remediation services .....	56	7,667.6	121.9	67.8	46.9	21.0	54.1
Administrative and support services <sup>7</sup> .....	561	7,303.0	104.3	57.0	39.6	17.4	47.3
Waste management and remediation services .....	562	364.6	17.7	10.8	7.3	3.5	6.8
<b>Education and health services</b> .....		19,065.4	668.7	306.9	182.3	124.6	361.8
Educational services .....	61	2,580.1	37.5	15.6	10.7	4.8	22.0
Educational services .....	611	2,580.1	37.5	15.6	10.7	4.8	22.0
Health care and social assistance .....	62	16,485.3	631.1	291.3	171.5	119.8	339.8
Ambulatory health care services .....	621	6,116.5	122.9	43.2	30.7	12.5	79.7
Hospitals .....	622	4,689.3	253.7	100.6	58.9	41.7	153.1
Nursing and residential care facilities .....	623	3,151.9	188.3	113.1	59.4	53.6	75.3
Social assistance .....	624	2,527.6	66.3	34.5	22.6	11.9	31.7
<b>Leisure and hospitality</b> .....		13,514.8	333.1	133.0	85.3	47.6	200.1
Arts, entertainment, and recreation .....	71	2,065.6	54.5	25.9	14.9	11.0	28.6
Performing arts, spectator sports, and related industries .....	711	408.5	13.9	5.4	3.3	2.1	8.4
Museums, historical sites, and similar institutions .....	712	129.7	4.0	2.0	1.3	.7	2.0
Amusement, gambling, and recreation industries .....	713	1,527.4	36.6	18.4	10.3	8.2	18.2
Accommodation and food services .....	72	11,449.2	278.6	107.1	70.5	36.6	171.5
Accommodation .....	721	1,830.1	68.8	37.7	20.7	17.1	31.0
Food services and drinking places .....	722	9,619.1	209.8	69.4	49.8	19.6	140.4
<b>Other services</b> .....		3,803.0	73.8	38.2	26.7	11.5	35.7
Other services, except public administration .....	81	3,803.0	73.8	38.2	26.7	11.5	35.7
Repair and maintenance .....	811	1,174.2	33.9	18.3	14.2	4.1	15.6

See footnotes at end of table.

TABLE 2. Numbers of nonfatal occupational injuries and illnesses by case type and ownership, selected industries, 2011 — Continued

(thousands)

Industry <sup>1</sup>	NAICS code <sup>2</sup>	2011 Annual average employment <sup>3</sup>	Total recordable cases	Cases with days away from work, job transfer, or restriction			Other recordable cases
				Total	Cases with days away from work <sup>4</sup>	Cases with job transfer or restriction	
Personal and laundry services .....	812	1,298.4	22.3	12.7	7.7	5.1	9.6
Religious, grantmaking, civic, professional, and similar organizations .....	813	1,330.4	17.6	7.1	4.8	2.3	10.5
<b>State and local government<sup>5</sup></b> .....		18,486.7	820.9	365.1	273.0	92.1	455.8
<b>State government<sup>5</sup></b> .....		4,807.9	183.0	91.1	72.7	18.5	91.9
<b>Goods producing<sup>5</sup></b> .....		77.9	2.7	1.4	1.1	.2	1.3
<b>Construction</b> .....		74.8	2.6	1.3	1.1	.2	1.3
Construction .....	23	74.8	2.6	1.3	1.1	.2	1.3
<b>Service providing</b> .....		4,730.0	180.4	89.8	71.5	18.2	90.6
<b>Education and health services</b> .....		2,670.6	85.2	40.5	30.1	10.4	44.7
Educational services .....	61	2,055.1	36.0	14.1	9.5	4.6	21.8
Educational services .....	611	2,055.1	36.0	14.1	9.5	4.6	21.8
Health care and social assistance .....	62	615.5	49.2	26.4	20.6	5.8	22.8
Hospitals .....	622	339.9	28.5	14.8	11.2	3.6	13.7
Nursing and residential care facilities .....	623	139.6	17.3	9.8	7.8	1.9	7.5
<b>Public administration</b> .....		1,898.7	86.9	43.5	36.1	—	43.4
Public administration .....	92	1,898.7	86.9	43.5	36.1	—	43.4
Justice, public order, and safety activities .....	922	751.7	55.0	29.9	24.8	—	25.1
<b>Local government<sup>5</sup></b> .....		13,678.9	637.8	274.0	200.3	73.7	363.8
<b>Goods producing<sup>5</sup></b> .....		107.4	8.9	4.8	3.3	1.6	4.1
<b>Construction</b> .....		106.4	8.9	4.8	3.3	1.5	4.1
Construction .....	23	106.4	8.9	4.8	3.3	1.5	4.1
Heavy and civil engineering construction .....	237	103.8	8.7	4.7	3.2	1.5	4.0

See footnotes at end of table.



TABLE 2. Numbers of nonfatal occupational injuries and illnesses by case type and ownership, selected industries, 2011 — Continued

(thousands)

Industry <sup>1</sup>	NAICS code <sup>2</sup>	2011 Annual average employment <sup>3</sup>	Total recordable cases	Cases with days away from work, job transfer, or restriction			Other recordable cases
				Total	Cases with days away from work <sup>4</sup>	Cases with job transfer or restriction	
<b>Service providing</b> .....		13,571.4	629.0	269.2	197.1	72.1	359.8
<b>Trade, transportation, and utilities</b> <sup>10</sup> .....		508.2	31.2	18.8	14.0	4.7	12.4
Transportation and warehousing <sup>10</sup> .....	48-49	266.0	17.0	10.9	9.2	1.6	6.2
Transit and ground passenger transportation .....	485	215.6	13.9	9.3	8.2	1.1	4.6
Utilities .....	22	238.9	14.2	7.9	4.8	3.1	6.3
Utilities .....	221	238.9	14.2	7.9	4.8	3.1	6.3
<b>Education and health services</b> .....		8,590.8	306.9	107.2	76.7	30.5	199.7
Educational services .....	61	7,688.2	258.5	87.5	64.0	23.6	170.9
Educational services .....	611	7,688.2	258.5	87.5	64.0	23.6	170.9
Health care and social assistance .....	62	902.6	48.4	19.7	12.8	6.9	28.7
Hospitals .....	622	649.0	36.8	13.1	8.7	4.4	23.7
Nursing and residential care facilities .....	623	77.2	6.3	4.4	2.4	—	1.9
<b>Public administration</b> .....		3,950.9	266.6	129.9	96.4	33.5	136.8
Public administration .....	92	3,950.9	266.6	129.9	96.4	33.5	136.8
Justice, public order, and safety activities .....	922	985.7	91.5	49.4	42.1	7.3	42.1

<sup>1</sup> Totals include data for industries not shown separately.

<sup>2</sup> *North American Industry Classification System* — United States, 2007

<sup>3</sup> Employment is expressed as an annual average and is derived primarily from the BLS-Quarterly Census of Employment and Wages (QCEW) program.

<sup>4</sup> Days-away-from-work cases include those that result in days away from work with or without job transfer or restriction.

<sup>5</sup> Excludes farms with fewer than 11 employees.

<sup>6</sup> Data for Mining (Sector 21 in the *North American Industry Classification System* — United States, 2007) include establishments not governed by the Mine Safety and Health Administration rules and reporting, such as those in Oil and Gas Extraction and related support activities. Data for mining operators in coal, metal, and nonmetal mining are provided to BLS by the Mine Safety and Health Administration, U.S. Department of Labor. Independent mining contractors are excluded from the coal, metal, and nonmetal mining industries. These data do not reflect the changes the Occupational Safety and Health Administration made to its recordkeeping requirements effective January 1, 2002; therefore,

estimates for these industries are not comparable to estimates in other industries.

<sup>7</sup> Industry scope changed in 2009.

<sup>8</sup> Data too small to be displayed.

<sup>9</sup> Data for mining operators in this industry are provided to BLS by the Mine Safety and Health Administration, U.S. Department of Labor. Independent mining contractors are excluded. These data do not reflect the changes the Occupational Safety and Health Administration made to its recordkeeping requirements effective January 1, 2002; therefore, estimates for these industries are not comparable to estimates in other industries.

<sup>10</sup> Data for employers in railroad transportation are provided to BLS by the Federal Railroad Administration, U.S. Department of Transportation.

NOTE: Because of rounding, components may not add to totals. Dash indicates data do not meet publication guidelines.

SOURCE: U.S. Bureau of Labor Statistics, U.S. Department of Labor

TABLE 3. Incidence rates<sup>1</sup> of nonfatal occupational injuries and illnesses by major industry sector, employment size, and ownership, 2011

Industry sector	All establishments	Establishment employment size (workers)				
		1 to 10	11 to 49	50 to 249	250 to 999	1,000 or more
All industries including State and local government <sup>2</sup> .....	3.8	1.8	3.3	4.4	4.2	4.5
Private industry <sup>2</sup> .....	3.5	1.8	3.2	4.2	3.7	3.8
Goods producing <sup>2</sup> .....	4.2	3.0	4.8	4.9	3.7	3.3
Natural resources and mining <sup>2,3</sup> .....	4.0	–	4.2	4.7	3.3	3.0
Construction .....	3.9	3.3	4.6	4.2	2.6	1.2
Manufacturing .....	4.4	2.5	5.0	5.1	3.9	3.4
Service providing .....	3.3	1.6	2.9	4.0	3.7	3.9
Trade, transportation, and utilities <sup>4</sup> .....	3.9	2.0	3.5	4.7	4.8	4.3
Information .....	1.6	–	1.6	2.3	1.3	1.2
Financial activities .....	1.4	1.4	1.4	1.7	1.2	.7
Professional and business services .....	1.7	1.2	2.1	1.8	1.5	.9
Education and health services .....	4.7	1.3	2.9	5.6	5.6	5.7
Leisure and hospitality .....	4.0	1.6	3.3	4.9	6.1	5.0
Other services, except public administration .....	2.6	1.8	2.6	4.0	2.9	2.0
State and local government <sup>2</sup> .....	5.7	–	4.7	5.5	6.4	5.8
State government <sup>2</sup> .....	4.6	–	–	3.9	6.6	4.1
Local government <sup>2</sup> .....	6.1	–	5.0	5.8	6.4	6.7

<sup>1</sup> The incidence rates represent the number of injuries and illnesses per 100 full-time workers and were calculated as: (N/EH) x 200,000, where

N = number of injuries and illnesses  
 EH = total hours worked by all employees during the calendar year  
 200,000 = base for 100 equivalent full-time workers (working 40 hours per week, 50 weeks per year)

<sup>2</sup> Excludes farms with fewer than 11 employees.

<sup>3</sup> Data for Mining (Sector 21 in the *North American Industry Classification System* — United States, 2007) include establishments not governed by the Mine Safety and Health

Administration rules and reporting, such as those in Oil and Gas Extraction and related support activities. Data for mining operators in coal, metal, and nonmetal mining are provided to BLS by the Mine Safety and Health Administration, U.S. Department of Labor. Independent mining contractors are excluded from the coal, metal, and nonmetal mining industries. These data do not reflect the changes the Occupational Safety and Health Administration made to its recordkeeping requirements effective January 1, 2002; therefore, estimates for these industries are not comparable to estimates in other industries.

<sup>4</sup> Data for employers in railroad transportation are provided to BLS by the Federal Railroad Administration, U.S. Department of Transportation.

NOTE: Dash indicates data do not meet publication guidelines.

SOURCE: U.S. Bureau of Labor Statistics, U.S. Department of Labor

**TABLE 4. Number of cases and incidence rate<sup>1</sup> of nonfatal occupational injuries and illnesses for industries with 100,000 or more cases, 2011**

Industry <sup>2</sup>	NAICS code <sup>3</sup>	2011 Annual average employment <sup>4</sup> (thousands)	Total cases (thousands)	Incidence rate
Elementary and secondary schools (Local government) .....	6111	7,126.5	249.3	5.0
General medical and surgical hospitals (Private industry) .....	6221	4,381.9	237.1	6.8
Food services and drinking places (Private industry) .....	722	9,619.1	209.8	3.6
Specialty trade contractors (Private industry) .....	238	3,490.6	123.5	4.1
Ambulatory health care services (Private industry) .....	621	6,116.5	122.9	2.7
Nursing care facilities (Private industry) .....	6231	1,662.5	104.7	8.2
Administrative and support services (Private industry) .....	561	7,303.0	<sup>5</sup> 104.3	2.5
General merchandise stores (Private industry) .....	452	3,050.1	<sup>5</sup> 101.3	4.6
<b>All industries including State and local government<sup>6</sup> .....</b>		126,140.9	3,807.4	3.8

<sup>1</sup> The incidence rates represent the number of injuries and illnesses per 100 full-time workers and were calculated as:  $(N/EH) \times 200,000$ , where

N = number of injuries and illnesses  
 EH = total hours worked by all employees during the calendar year  
 200,000 = base for 100 equivalent full-time workers (working 40 hours per week, 50 weeks per year)

<sup>2</sup> Totals include data for industries not shown separately.

<sup>3</sup> *North American Industry Classification System* — United States, 2007

<sup>4</sup> Employment is expressed as an annual average and is derived primarily from the BLS-Quarterly Census of Employment and Wages (QCEW) program.

<sup>5</sup> The point estimate for this industry exceeds 100,000 cases; however, the true number of cases may be less than 100,000 at the 95 percent confidence level.

<sup>6</sup> Excludes farms with fewer than 11 employees.

SOURCE: U.S. Bureau of Labor Statistics, U.S. Department of Labor

TABLE 5. Incidence rate<sup>1</sup> and number of nonfatal occupational injuries by selected industries and ownership, 2011

Industry <sup>2</sup>	NAICS code <sup>3</sup>	2011 Annual average employment <sup>4</sup> (thousands)	Incidence rate	Number of cases (thousands)
<b>All industries including State and local government<sup>5</sup></b> .....		126,140.9	3.6	3,599.9
<b>Private industry<sup>5</sup></b> .....		107,654.2	3.3	2,831.1
<b>Goods producing<sup>5</sup></b> .....		18,849.0	3.9	702.5
<b>Natural resources and mining<sup>5,6</sup></b> .....		1,644.6	3.8	62.2
Agriculture, forestry, fishing and hunting <sup>5</sup> .....	11	974.9	5.2	45.6
Crop production <sup>5,7</sup> .....	111	413.8	5.1	18.6
Animal production <sup>5,7</sup> .....	112	163.6	6.4	11.9
Forestry and logging .....	113	57.1	4.5	2.2
Fishing, hunting and trapping .....	114	8.6	3.8	.2
Support activities for agriculture and forestry .....	115	331.7	4.6	12.7
Mining <sup>6</sup> .....	21	669.7	2.2	16.6
Oil and gas extraction .....	211	149.4	.8	1.3
Mining (except oil and gas) <sup>8</sup> .....	212	208.1	2.9	7.0
Support activities for mining .....	213	312.1	2.2	8.3
<b>Construction</b> .....		5,576.7	3.8	184.7
Construction .....	23	5,576.7	3.8	184.7
Construction of buildings .....	236	1,259.6	3.5	38.0
Heavy and civil engineering construction .....	237	826.4	3.4	26.5
Specialty trade contractors .....	238	3,490.6	4.0	120.2
<b>Manufacturing</b> .....		11,627.7	3.9	455.6
Manufacturing .....	31-33	11,627.7	3.9	455.6
Food manufacturing .....	311	1,458.8	4.8	69.2
Beverage and tobacco product manufacturing .....	312	186.2	6.7	12.1
Textile mills .....	313	120.8	3.1	3.8
Textile product mills <sup>7</sup> .....	314	119.6	3.4	3.7
Apparel manufacturing <sup>7</sup> .....	315	163.3	2.4	3.3
Leather and allied product manufacturing .....	316	29.9	5.4	1.5
Wood product manufacturing .....	321	338.1	6.0	19.6
Paper manufacturing .....	322	386.1	3.1	12.5
Printing and related support activities .....	323	478.1	2.7	12.1
Petroleum and coal products manufacturing .....	324	109.6	1.7	2.0
Chemical manufacturing .....	325	808.2	2.2	17.5
Plastics and rubber products manufacturing <sup>7</sup> .....	326	632.2	4.6	28.9

See footnotes at end of table.

TABLE 5. Incidence rate<sup>1</sup> and number of nonfatal occupational injuries by selected industries and ownership, 2011 — Continued

Industry <sup>2</sup>	NAICS code <sup>3</sup>	2011 Annual average employment <sup>4</sup> (thousands)	Incidence rate	Number of cases (thousands)
Nonmetallic mineral product manufacturing .....	327	367.4	5.0	18.1
Primary metal manufacturing .....	331	375.9	5.6	22.3
Fabricated metal product manufacturing .....	332	1,312.3	5.3	70.1
Machinery manufacturing <sup>7</sup> .....	333	1,015.6	4.1	42.7
Computer and electronic product manufacturing .....	334	1,091.4	1.2	13.3
Electrical equipment, appliance, and component manufacturing .....	335	366.9	2.8	10.3
Transportation equipment manufacturing <sup>7</sup> .....	336	1,337.6	4.4	59.5
Furniture and related product manufacturing <sup>7</sup> .....	337	353.9	5.0	16.7
Miscellaneous manufacturing .....	339	575.8	3.0	16.4
<b>Service providing</b> .....		88,805.3	3.1	2,128.6
<b>Trade, transportation, and utilities<sup>9</sup></b> .....		24,924.6	3.8	782.1
Wholesale trade .....	42	5,580.0	3.1	166.7
Merchant wholesalers, durable goods .....	423	2,762.9	2.7	72.4
Merchant wholesalers, nondurable goods .....	424	1,960.9	4.3	79.8
Wholesale electronic markets and agents and brokers .....	425	856.3	1.9	14.6
Retail trade .....	44-45	14,773.9	3.8	413.2
Motor vehicle and parts dealers .....	441	1,680.1	3.8	59.0
Furniture and home furnishings stores .....	442	442.7	3.9	13.0
Electronics and appliance stores .....	443	517.9	2.0	8.2
Building material and garden equipment and supplies dealers .....	444	1,156.9	5.3	53.4
Food and beverage stores .....	445	2,859.7	4.6	93.0
Health and personal care stores .....	446	999.3	2.1	15.2
Gasoline stations .....	447	832.9	2.5	15.6
Clothing and clothing accessories stores .....	448	1,424.1	2.5	19.3
Sporting goods, hobby, book, and music stores .....	451	595.0	2.5	9.1
General merchandise stores .....	452	3,050.1	4.4	97.2
Miscellaneous store retailers .....	453	795.1	3.9	20.5
Nonstore retailers .....	454	420.1	2.7	9.8
Transportation and warehousing <sup>9</sup> .....	48-49	4,017.8	4.8	185.0
Air transportation .....	481	450.5	6.7	24.5
Rail transportation <sup>9</sup> .....	482	—	1.9	4.3
Water transportation .....	483	61.5	1.9	1.4
Truck transportation .....	484	1,289.0	4.9	66.8
Transit and ground passenger transportation .....	485	425.7	4.5	13.6
Pipeline transportation .....	486	41.7	1.4	.6
Scenic and sightseeing transportation .....	487	28.1	3.5	.6
Support activities for transportation .....	488	560.5	3.6	18.8
Couriers and messengers .....	492	523.4	6.1	23.3

See footnotes at end of table.

TABLE 5. Incidence rate<sup>1</sup> and number of nonfatal occupational injuries by selected industries and ownership, 2011 — Continued

Industry <sup>2</sup>	NAICS code <sup>3</sup>	2011 Annual average employment <sup>4</sup> (thousands)	Incidence rate	Number of cases (thousands)
Warehousing and storage .....	493	636.8	5.3	31.2
Utilities .....	22	552.9	3.1	17.2
Utilities .....	221	552.9	3.1	17.2
<b>Information</b> .....		2,692.6	1.5	35.7
Information .....	51	2,692.6	1.5	35.7
Publishing industries (except Internet) .....	511	747.9	1.2	7.8
Motion picture and sound recording industries .....	512	356.1	2.0	4.8
Broadcasting (except Internet) .....	515	293.9	1.9	4.6
Telecommunications <sup>7</sup> .....	517	901.1	1.9	16.5
Data processing, hosting, and related services <sup>7</sup> .....	518	244.2	.6	1.3
Other information services <sup>7</sup> .....	519	149.4	.6	.8
<b>Financial activities</b> .....		7,505.6	1.3	84.6
Finance and insurance .....	52	5,543.4	.7	37.0
Monetary authorities - central bank .....	521	20.9	1.0	.2
Credit intermediation and related activities .....	522	2,549.2	.9	21.8
Securities, commodity contracts, and other financial investments and related activities .....	523	822.8	—	—
Insurance carriers and related activities .....	524	2,065.9	.7	12.4
Funds, trusts, and other financial vehicles .....	525	84.6	.6	.4
Real estate and rental and leasing .....	53	1,962.2	2.9	47.6
Real estate <sup>7</sup> .....	531	1,430.4	2.7	30.8
Rental and leasing services .....	532	506.4	3.7	16.7
Lessors of nonfinancial intangible assets (except copyrighted works) .....	533	25.4	.6	.1
<b>Professional and business services</b> .....		17,299.2	1.6	205.4
Professional, scientific, and technical services .....	54	7,711.7	1.0	66.4
Professional, scientific, and technical services <sup>7</sup> .....	541	7,711.7	1.0	66.4
Management of companies and enterprises .....	55	1,919.9	1.3	22.9
Administrative and support and waste management and remediation services .....	56	7,667.6	2.6	116.1
Administrative and support services <sup>7</sup> .....	561	7,303.0	2.4	99.3
Waste management and remediation services .....	562	364.6	4.7	16.8

See footnotes at end of table.

TABLE 5. Incidence rate<sup>1</sup> and number of nonfatal occupational injuries by selected industries and ownership, 2011 — Continued

Industry <sup>2</sup>	NAICS code <sup>3</sup>	2011 Annual average employment <sup>4</sup> (thousands)	Incidence rate	Number of cases (thousands)
<b>Education and health services</b> .....		19,065.4	4.4	628.4
Educational services .....	61	2,580.1	2.0	35.8
Educational services .....	611	2,580.1	2.0	35.8
Health care and social assistance .....	62	16,485.3	4.7	592.6
Ambulatory health care services .....	621	6,116.5	2.4	112.9
Hospitals .....	622	4,689.3	6.3	236.4
Nursing and residential care facilities .....	623	3,151.9	7.5	180.0
Social assistance .....	624	2,527.6	3.5	63.3
<b>Leisure and hospitality</b> .....		13,514.8	3.8	320.9
Arts, entertainment, and recreation .....	71	2,065.6	4.3	51.7
Performing arts, spectator sports, and related industries .....	711	408.5	5.9	13.5
Museums, historical sites, and similar institutions .....	712	129.7	4.2	3.7
Amusement, gambling, and recreation industries .....	713	1,527.4	3.9	34.5
Accommodation and food services .....	72	11,449.2	3.7	269.2
Accommodation .....	721	1,830.1	4.8	64.4
Food services and drinking places .....	722	9,619.1	3.5	204.7
<b>Other services</b> .....		3,803.0	2.5	71.4
Other services, except public administration .....	81	3,803.0	2.5	71.4
Repair and maintenance .....	811	1,174.2	3.1	33.3
Personal and laundry services .....	812	1,298.4	2.3	21.6
Religious, grantmaking, civic, professional, and similar organizations .....	813	1,330.4	1.9	16.5
<b>State and local government<sup>5</sup></b> .....		18,486.7	5.4	768.8
<b>State government<sup>5</sup></b> .....		4,807.9	4.3	170.2
<b>Goods producing<sup>5</sup></b> .....		77.9	3.5	2.5
<b>Construction</b> .....		74.8	3.6	2.5
Construction .....	23	74.8	3.6	2.5
<b>Service providing</b> .....		4,730.0	4.3	167.6

See footnotes at end of table.

TABLE 5. Incidence rate<sup>1</sup> and number of nonfatal occupational injuries by selected industries and ownership, 2011 — Continued

Industry <sup>2</sup>	NAICS code <sup>3</sup>	2011 Annual average employment <sup>4</sup> (thousands)	Incidence rate	Number of cases (thousands)
<b>Education and health services</b> .....		2,670.6	4.1	79.5
Educational services .....	61	2,055.1	2.4	33.1
Educational services .....	611	2,055.1	2.4	33.1
Health care and social assistance .....	62	615.5	8.2	46.4
Hospitals .....	622	339.9	8.5	26.6
Nursing and residential care facilities .....	623	139.6	12.7	16.8
<b>Public administration</b> .....		1,898.7	4.5	80.4
Public administration .....	92	1,898.7	4.5	80.4
Justice, public order, and safety activities .....	922	751.7	7.1	51.3
<b>Local government</b> <sup>5</sup> .....		13,678.9	5.8	598.6
<b>Goods producing</b> <sup>5</sup> .....		107.4	8.0	8.2
<b>Construction</b> .....		106.4	8.1	8.2
Construction .....	23	106.4	8.1	8.2
Heavy and civil engineering construction .....	237	103.8	8.1	8.1
<b>Service providing</b> .....		13,571.4	5.7	590.4
<b>Trade, transportation, and utilities</b> <sup>9</sup> .....		508.2	6.3	29.0
Transportation and warehousing <sup>9</sup> .....	48-49	266.0	6.8	15.9
Transit and ground passenger transportation .....	485	215.6	6.9	12.9
Utilities .....	22	238.9	5.7	13.1
Utilities .....	221	238.9	5.7	13.1

See footnotes at end of table.



TABLE 5. Incidence rate<sup>1</sup> and number of nonfatal occupational injuries by selected industries and ownership, 2011 — Continued

Industry <sup>2</sup>	NAICS code <sup>3</sup>	2011 Annual average employment <sup>4</sup> (thousands)	Incidence rate	Number of cases (thousands)
<b>Education and health services</b> .....		8,590.8	4.9	295.8
Educational services .....	61	7,688.2	4.7	251.7
Educational services .....	611	7,688.2	4.7	251.7
Health care and social assistance .....	62	902.6	5.8	44.0
Hospitals .....	622	649.0	6.0	32.8
Nursing and residential care facilities .....	623	77.2	9.9	6.1
<b>Public administration</b> .....		3,950.9	7.1	242.7
Public administration .....	92	3,950.9	7.1	242.7
Justice, public order, and safety activities .....	922	985.7	9.4	83.3

<sup>1</sup> The incidence rates represent the number of injuries per 100 full-time workers and were calculated as: (N/EH) x 200,000, where

N = number of injuries  
 EH = total hours worked by all employees during the calendar year  
 200,000 = base for 100 equivalent full-time workers (working 40 hours per week, 50 weeks per year)

<sup>2</sup> Totals include data for industries not shown separately.

<sup>3</sup> *North American Industry Classification System* — United States, 2007

<sup>4</sup> Employment is expressed as an annual average and is derived primarily from the BLS-Quarterly Census of Employment and Wages (QCEW) program.

<sup>5</sup> Excludes farms with fewer than 11 employees.

<sup>6</sup> Data for Mining (Sector 21 in the *North American Industry Classification System* — United States, 2007) include establishments not governed by the Mine Safety and Health Administration rules and reporting, such as those in Oil and Gas Extraction and related support activities. Data for mining operators in coal, metal, and nonmetal mining are provided to BLS by the Mine Safety and Health Administration, U.S. Department of

Labor. Independent mining contractors are excluded from the coal, metal, and nonmetal mining industries. These data do not reflect the changes the Occupational Safety and Health Administration made to its recordkeeping requirements effective January 1, 2002; therefore, estimates for these industries are not comparable to estimates in other industries.

<sup>7</sup> Industry scope changed in 2009.

<sup>8</sup> Data for mining operators in this industry are provided to BLS by the Mine Safety and Health Administration, U.S. Department of Labor. Independent mining contractors are excluded. These data do not reflect the changes the Occupational Safety and Health Administration made to its recordkeeping requirements effective January 1, 2002; therefore, estimates for these industries are not comparable to estimates in other industries.

<sup>9</sup> Data for employers in railroad transportation are provided to BLS by the Federal Railroad Administration, U.S. Department of Transportation.

NOTE: Because of rounding, components may not add to totals. Dash indicates data do not meet publication guidelines.

SOURCE: U.S. Bureau of Labor Statistics, U.S. Department of Labor

TABLE 6a. Incidence rates<sup>1</sup> of nonfatal occupational illnesses by major industry sector, category of illness, and ownership, 2011

Industry sector	Total cases	Skin diseases or disorders	Respiratory conditions	Poisonings	Hearing loss	All other illnesses
Incidence rates per 10,000 full-time workers						
All industries including State and local government <sup>2</sup> .....	20.6	3.3	1.8	0.3	2.1	13.2
Private industry <sup>2</sup> .....	18.0	2.8	1.5	.2	2.1	11.3
Goods producing <sup>2</sup> .....	31.0	4.0	1.5	.2	8.1	17.2
Natural resources and mining <sup>2,3</sup> .....	19.8	5.5	1.6	.5	1.3	10.9
Construction .....	11.3	2.0	1.0	.2	.4	7.6
Manufacturing .....	40.8	4.6	1.7	.1	12.3	22.1
Service providing .....	14.6	2.5	1.5	.2	.5	9.8
Trade, transportation, and utilities <sup>4</sup> .....	12.7	1.8	.9	.3	1.3	8.4
Information .....	9.3	.7	.3	.1	.6	7.6
Financial activities .....	7.9	.6	—	.1	—	5.7
Professional and business services .....	8.4	1.8	.9	.2	.3	5.1
Education and health services .....	28.0	4.6	2.8	.2	.1	20.3
Leisure and hospitality .....	14.5	4.2	1.5	.5	.1	8.2
Other services, except public administration .....	8.4	1.1	2.1	—	.2	4.9
State and local government <sup>2</sup> .....	36.3	6.3	3.7	.4	1.6	24.3
State government <sup>2</sup> .....	32.5	3.5	3.2	.4	1.4	24.0
Local government <sup>2</sup> .....	37.7	7.3	3.8	.4	1.7	24.4

<sup>1</sup> The incidence rates represent the number of illnesses per 10,000 full-time workers and were calculated as:  $(N/EH) \times 20,000,000$ , where

N = number of illnesses  
 EH = total hours worked by all employees during the calendar year  
 20,000,000 = base for 10,000 equivalent full-time workers (working 40 hours per week, 50 weeks per year)

<sup>2</sup> Excludes farms with fewer than 11 employees.

<sup>3</sup> Data for Mining (Sector 21 in the *North American Industry Classification System* — United States, 2007) include establishments not governed by the Mine Safety and Health Administration rules and reporting, such as those in Oil and Gas Extraction and related support activities. Data for mining operators

in coal, metal, and nonmetal mining are provided to BLS by the Mine Safety and Health Administration, U.S. Department of Labor. Independent mining contractors are excluded from the coal, metal, and nonmetal mining industries. These data do not reflect the changes the Occupational Safety and Health Administration made to its recordkeeping requirements effective January 1, 2002; therefore, estimates for these industries are not comparable to estimates in other industries.

<sup>4</sup> Data for employers in railroad transportation are provided to BLS by the Federal Railroad Administration, U.S. Department of Transportation.

NOTE: Because of rounding, components may not add to totals. Dash indicates data do not meet publication guidelines.

SOURCE: U.S. Bureau of Labor Statistics, U.S. Department of Labor

TABLE 6b. Numbers of cases of nonfatal occupational illnesses by major industry sector, category of illness, and ownership, 2011

Industry sector	Total cases	Skin diseases or disorders	Respiratory conditions	Poisonings	Hearing loss	All other illnesses
	Numbers of illnesses in thousands					
All industries including State and local government <sup>1</sup> .....	207.5	33.3	18.1	2.5	20.7	132.9
Private industry <sup>1</sup> .....	155.4	24.3	12.8	1.9	18.4	98.0
Goods producing <sup>1</sup> .....	55.9	7.2	2.7	.4	14.7	31.0
Natural resources and mining <sup>1,2</sup> .....	3.3	.9	.3	.1	.2	1.8
Construction .....	5.5	1.0	.5	.1	.2	3.7
Manufacturing .....	47.1	5.3	1.9	.2	14.2	25.5
Service providing .....	99.5	17.1	10.1	1.6	3.7	67.1
Trade, transportation, and utilities <sup>3</sup> .....	26.2	3.7	1.9	.6	2.8	17.3
Information .....	2.2	.2	.1	( <sup>4</sup> )	.1	1.8
Financial activities .....	5.3	.4	—	.1	—	3.8
Professional and business services .....	11.0	2.4	1.2	.3	.4	6.7
Education and health services .....	40.2	6.6	4.0	.3	.2	29.2
Leisure and hospitality .....	12.2	3.6	1.3	.4	.1	6.9
Other services, except public administration .....	2.4	.3	.6	—	.1	1.4
State and local government <sup>1</sup> .....	52.1	9.0	5.3	.6	2.4	34.9
State government <sup>1</sup> .....	12.9	1.4	1.3	.2	.6	9.5
Local government <sup>1</sup> .....	39.2	7.6	4.0	.4	1.8	25.4

<sup>1</sup> Excludes farms with fewer than 11 employees.

<sup>2</sup> Data for Mining (Sector 21 in the *North American Industry Classification System* — United States, 2007) include establishments not governed by the Mine Safety and Health Administration rules and reporting, such as those in Oil and Gas Extraction and related support activities. Data for mining operators in coal, metal, and nonmetal mining are provided to BLS by the Mine Safety and Health Administration, U.S. Department of Labor. Independent mining contractors are excluded from the coal, metal, and nonmetal mining industries. These data do not reflect the changes the Occupational Safety and Health Administration made to its recordkeeping requirements effective January 1, 2002; therefore, estimates for these industries

are not comparable to estimates in other industries.

<sup>3</sup> Data for employers in railroad transportation are provided to BLS by the Federal Railroad Administration, U.S. Department of Transportation.

<sup>4</sup> Data too small to be displayed.

NOTE: Because of rounding, components may not add to totals. Dash indicates data do not meet publication guidelines.

SOURCE: U.S. Bureau of Labor Statistics, U.S. Department of Labor

TABLE 7. Incidence rates<sup>1</sup> of nonfatal occupational injuries and illnesses by major private industry sector and selected case types, 2009-2011

Industry sector	Total recordable cases			Cases with days away from work, job transfer, or restriction									Other recordable cases		
				Total			Cases with days away from work <sup>2</sup>			Cases with job transfer or restriction					
	2009	2010	2011	2009	2010	2011	2009	2010	2011	2009	2010	2011	2009	2010	2011
Private industry <sup>3</sup> .....	3.6	3.5	3.5	1.8	1.8	1.8	1.1	1.1	1.1	0.8	0.8	0.7	1.8	1.7	1.7
Goods producing <sup>3</sup> .....	4.3	4.2	4.2	2.3	2.3	2.3	1.2	1.2	1.2	1.1	1.1	1.1	2.0	1.9	1.9
Natural resources and mining <sup>3,4</sup> .....	4.0	3.7	4.0	2.2	2.2	2.4	1.4	1.4	1.4	.8	.8	.9	1.7	1.5	1.6
Construction .....	4.3	4.0	3.9	2.3	2.1	2.1	1.6	1.5	1.5	.7	.6	.7	2.0	1.9	1.8
Manufacturing .....	4.3	4.4	4.4	2.3	2.4	2.4	1.0	1.1	1.1	1.3	1.3	1.3	2.0	2.0	2.0
Service providing .....	3.4	3.4	3.3	1.7	1.7	1.6	1.0	1.0	1.0	.7	.7	.6	1.7	1.6	1.6
Trade, transportation, and utilities <sup>5</sup> .....	4.1	4.1	3.9	2.4	2.4	2.3	1.4	1.4	1.3	1.0	1.1	1.0	1.8	1.7	1.6
Information .....	1.9	1.8	1.6	1.0	1.1	.9	.7	.8	.6	.3	.3	.3	.9	.8	.7
Financial activities .....	1.5	1.3	1.4	.6	.6	.6	.4	.4	.4	.2	.2	.2	.8	.7	.7
Professional and business services .....	1.8	1.7	1.7	.9	.9	.8	.6	.6	.5	.3	.3	.3	.9	.8	.9
Education and health services .....	5.0	4.8	4.7	2.2	2.2	2.1	1.3	1.3	1.3	1.0	.9	.9	2.7	2.6	2.5
Leisure and hospitality .....	3.9	3.9	4.0	1.6	1.7	1.6	1.0	1.1	1.0	.6	.6	.6	2.3	2.2	2.4
Other services, except public administration .....	2.9	2.7	2.6	1.4	1.3	1.3	1.0	.9	.9	.5	.4	.4	1.5	1.4	1.2

<sup>1</sup> The incidence rates represent the number of injuries and illnesses per 100 full-time workers and were calculated as: (N/EH) x 200,000, where

N = number of injuries and illnesses  
 EH = total hours worked by all employees during the calendar year  
 200,000 = base for 100 equivalent full-time workers (working 40 hours per week, 50 weeks per year)

<sup>2</sup> Days-away-from-work cases include those that result in days away from work with or without job transfer or restriction.

<sup>3</sup> Excludes farms with fewer than 11 employees.

<sup>4</sup> Data for Mining (Sector 21 in the *North American Industry Classification System* — United States,

2007) include establishments not governed by the Mine Safety and Health Administration rules and reporting, such as those in Oil and Gas Extraction and related support activities. Data for mining operators in coal, metal, and nonmetal mining are provided to BLS by the Mine Safety and Health Administration, U.S. Department of Labor. Independent mining contractors are excluded from the coal, metal, and nonmetal mining industries. These data do not reflect the changes the Occupational Safety and Health Administration made to its recordkeeping requirements effective January 1, 2002; therefore, estimates for these industries are not comparable to estimates in other industries.

<sup>5</sup> Data for employers in railroad transportation are provided to BLS by the Federal Railroad Administration, U.S. Department of Transportation.

NOTE: Because of rounding, components may not add to totals.  
 SOURCE: U.S. Bureau of Labor Statistics, U.S. Department of Labor