

Table 5.1  
Cancer of the Cervix Uteri (Invasive)

Trends in SEER Incidence<sup>ab</sup> and U.S. Mortality<sup>c</sup> Using the Joinpoint Regression Program,  
1975-2009 With up to Five Joinpoints, 1992-2009 With up to Three Joinpoints,  
All Ages by Race/Ethnicity

	JP Trend 1		JP Trend 2		JP Trend 3		JP Trend 4		JP Trend 5		JP Trend 6		AAPC <sup>d</sup>	
	Years	APC	Years	APC	Years	APC	Years	APC	Years	APC	Years	APC	2000-09	2005-09
<u>SEER 9 Delay-Adjusted Incidence<sup>a</sup>, 1975-2009</u>														
All Races	1975-82	-4.6*	1982-90	-0.2	1990-09	-2.5*							-2.5*	-2.5*
White	1975-82	-4.7*	1982-90	0.2	1990-09	-2.2*							-2.2*	-2.2*
Black	1975-09	-3.7*											-3.7*	-3.7*
<u>SEER 13 Delay-Adjusted Incidence<sup>b</sup>, 1992-2009</u>														
All Races	1992-09	-2.5*											-2.5*	-2.5*
White	1992-09	-2.1*											-2.1*	-2.1*
Black	1992-09	-3.8*											-3.8*	-3.8*
<u>SEER 9 Observed Incidence<sup>a</sup>, 1975-2009</u>														
All Races	1975-82	-4.6*	1982-90	-0.1	1990-09	-2.6*							-2.6*	-2.6*
White	1975-82	-4.7*	1982-90	0.3	1990-09	-2.3*							-2.3*	-2.3*
Black	1975-09	-3.7*											-3.7*	-3.7*
<u>SEER 13 Observed Incidence<sup>b</sup>, 1992-2009</u>														
All Races	1992-09	-2.6*											-2.6*	-2.6*
White	1992-09	-2.2*											-2.2*	-2.2*
White NH <sup>ef</sup>	1992-09	-2.1*											-2.1*	-2.1*
Black	1992-09	-3.9*											-3.9*	-3.9*
Black NH <sup>ef</sup>	1992-09	-3.8*											-3.8*	-3.8*
API <sup>e</sup>	1992-09	-4.3*											-4.3*	-4.3*
AI/AN <sup>eg</sup>	1992-09	-0.9											-0.9	-0.9
Hispanic <sup>f</sup>	1992-09	-3.8*											-3.8*	-3.8*
<u>U.S. Cancer Mortality<sup>c</sup>, 1975-2009</u>														
All Races	1975-82	-4.3*	1982-96	-1.6*	1996-03	-3.8*	2003-09	-0.9*					-1.9*	-0.9*
White	1975-83	-4.2*	1983-96	-1.3*	1996-03	-3.4*	2003-09	-0.8					-1.7*	-0.8
Black	1975-81	-4.8*	1981-93	-2.4*	1993-03	-4.8*	2003-09	-1.7					-2.7*	-1.7
<u>U.S. Cancer Mortality<sup>c</sup>, 1992-2009</u>														
All Races	1992-97	-2.4*	1997-03	-3.8*	2003-09	-0.9*							-1.9*	-0.9*
White	1992-96	-1.4	1996-03	-3.4*	2003-09	-0.8							-1.7*	-0.8
White NH <sup>ef</sup>	1992-96	-1.1	1996-04	-3.4*	2004-07	0.9	2007-09	-2.8					-1.9*	-1.0
Black	1992-03	-4.8*	2003-09	-1.6									-2.7*	-1.6
Black NH <sup>ef</sup>	1992-01	-5.1*	2001-09	-2.5*									-2.8*	-2.5*
API <sup>e</sup>	1992-09	-3.8*											-3.8*	-3.8*
AI/AN <sup>eg</sup>	1992-09	-1.8											-1.8	-1.8
Hispanic <sup>f</sup>	1992-09	-2.6*											-2.6*	-2.6*

Joinpoint Regression Program Version 3.5, April 2011, National Cancer Institute. (<http://surveillance.cancer.gov/joinpoint/>).

The APC is the Annual Percent Change based on rates age-adjusted to the 2000 US Std Population (19 age groups - Census P25-1130).

Trends are from the SEER 9 areas (San Francisco, Connecticut, Detroit, Hawaii, Iowa, New Mexico, Seattle, Utah, and Atlanta).

Trends are from the SEER 13 areas (SEER 9 Areas, Los Angeles, San Jose-Monterey, Rural Georgia, and the Alaska Native Registry).

Trends are from US Mortality Files, National Center for Health Statistics, Centers for Disease Control and Prevention.

The AAPC is the Average Annual Percent Change and is based on the APCs calculated by Joinpoint.

API - Asian/Pacific Islander, AI/AN - American Indian/Alaska Native, NH - Non-Hispanic

Hispanic and Non-Hispanic are not mutually exclusive from whites, blacks, Asian/Pacific Islanders, and American Indians/Alaska

Natives. Incidence data for Hispanics and Non-Hispanics are based on NHIA and exclude cases from the Alaska Native Registry.

The Hispanic and Non-Hispanic mortality trends exclude deaths from CT, DC, ME, MD, MN, NH, NY, ND, SC, OK and VT.

Data for American Indian/Alaska Native are based on the CHSDA (Contract Health Service Delivery Area) counties.

\* The APC/AAPC is significantly different from zero ( $p < .05$ ).

- Joinpoint regression line analysis could not be performed on data series.

Table 5.2  
Cancer of the Cervix Uteri (Invasive)

Trends in SEER Incidence<sup>ab</sup> and U.S. Mortality<sup>c</sup> Using the Joinpoint Regression Program,  
1975-2009 With up to Five Joinpoints, 1992-2009 With up to Three Joinpoints,  
Ages <50 by Race/Ethnicity

	JP Trend 1		JP Trend 2		JP Trend 3		JP Trend 4		JP Trend 5		JP Trend 6		AAPC <sup>d</sup>	
	Years	APC	Years	APC	Years	APC	Years	APC	Years	APC	Years	APC	2000-09	2005-09
<u>SEER 9 Delay-Adjusted Incidence<sup>a</sup>, 1975-2009</u>														
All Races	1975-82	-4.0*	1982-89	1.2	1989-09	-2.1*							-2.1*	-2.1*
White	1975-81	-4.6*	1981-89	1.5	1989-09	-1.7*							-1.7*	-1.7*
Black	1975-09	-3.4*											-3.4*	-3.4*
<u>SEER 13 Delay-Adjusted Incidence<sup>b</sup>, 1992-2009</u>														
All Races	1992-06	-2.4*	2006-09	0.9									-1.3	0.1
White	1992-09	-1.7*											-1.7*	-1.7*
Black	1992-09	-3.9*											-3.9*	-3.9*
<u>SEER 9 Observed Incidence<sup>a</sup>, 1975-2009</u>														
All Races	1975-82	-3.9*	1982-90	0.8	1990-09	-2.2*							-2.2*	-2.2*
White	1975-81	-4.6*	1981-89	1.6	1989-09	-1.8*							-1.8*	-1.8*
Black	1975-09	-3.4*											-3.4*	-3.4*
<u>SEER 13 Observed Incidence<sup>b</sup>, 1992-2009</u>														
All Races	1992-09	-2.2*											-2.2*	-2.2*
White	1992-09	-1.8*											-1.8*	-1.8*
White NH <sup>ef</sup>	1992-09	-1.6*											-1.6*	-1.6*
Black	1992-09	-4.0*											-4.0*	-4.0*
Black NH <sup>ef</sup>	1992-09	-4.0*											-4.0*	-4.0*
API <sup>e</sup>	1992-09	-2.5*											-2.5*	-2.5*
AI/AN <sup>eg</sup>	1992-09	1.0											1.0	1.0
Hispanic <sup>f</sup>	1992-09	-3.5*											-3.5*	-3.5*
<u>U.S. Cancer Mortality<sup>c</sup>, 1975-2009</u>														
All Races	1975-81	-3.8*	1981-97	-0.7*	1997-00	-6.3	2000-09	-1.2*					-1.2*	-1.2*
White	1975-79	-5.0*	1979-97	-0.4*	1997-03	-3.7*	2003-09	-0.4					-1.5*	-0.4
Black	1975-09	-3.2*											-3.2*	-3.2*
<u>U.S. Cancer Mortality<sup>c</sup>, 1992-2009</u>														
All Races	1992-03	-3.0*	2003-09	-0.8									-1.5*	-0.8
White	1992-97	-0.8	1997-03	-3.6*	2003-09	-0.4							-1.5*	-0.4
White NH <sup>ef</sup>	1992-09	-1.8*											-1.8*	-1.8*
Black	1992-01	-5.6*	2001-09	-1.1									-1.6	-1.1
Black NH <sup>ef</sup>	1992-09	-3.6*											-3.6*	-3.6*
API <sup>e</sup>	1992-09	-3.8*											-3.8*	-3.8*
AI/AN <sup>eg</sup>	1992-09	0.9											0.9	0.9
Hispanic <sup>f</sup>	1992-09	-2.7*											-2.7*	-2.7*

Joinpoint Regression Program Version 3.5, April 2011, National Cancer Institute. (<http://surveillance.cancer.gov/joinpoint/>).

The APC is the Annual Percent Change based on rates age-adjusted to the 2000 US Std Population (19 age groups - Census P25-1130).

<sup>a</sup> Trends are from the SEER 9 areas (San Francisco, Connecticut, Detroit, Hawaii, Iowa, New Mexico, Seattle, Utah, and Atlanta).

<sup>b</sup> Trends are from the SEER 13 areas (SEER 9 Areas, Los Angeles, San Jose-Monterey, Rural Georgia, and the Alaska Native Registry).

<sup>c</sup> Trends are from US Mortality Files, National Center for Health Statistics, Centers for Disease Control and Prevention.

<sup>d</sup> The AAPC is the Average Annual Percent Change and is based on the APCs calculated by Joinpoint.

<sup>e</sup> API - Asian/Pacific Islander, AI/AN - American Indian/Alaska Native, NH - Non-Hispanic

<sup>f</sup> Hispanic and Non-Hispanic are not mutually exclusive from whites, blacks, Asian/Pacific Islanders, and American Indians/Alaska

Natives. Incidence data for Hispanics and Non-Hispanics are based on NHIA and exclude cases from the Alaska Native Registry.

The Hispanic and Non-Hispanic mortality trends exclude deaths from CT, DC, ME, MD, MN, NH, NY, ND, SC, OK and VT.

<sup>g</sup> Data for American Indian/Alaska Native are based on the CHSDA (Contract Health Service Delivery Area) counties.

\* The APC/AAPC is significantly different from zero (p<.05).

- Joinpoint regression line analysis could not be performed on data series.

Table 5.3  
Cancer of the Cervix Uteri (Invasive)

Trends in SEER Incidence<sup>ab</sup> and U.S. Mortality<sup>c</sup> Using the Joinpoint Regression Program,  
1975-2009 With up to Five Joinpoints, 1992-2009 With up to Three Joinpoints,  
Ages 50+ by Race/Ethnicity

	JP Trend 1		JP Trend 2		JP Trend 3		JP Trend 4		JP Trend 5		JP Trend 6		AAPC <sup>d</sup>	
	Years	APC	Years	APC	Years	APC	Years	APC	Years	APC	Years	APC	2000-09	2005-09
<u>SEER 9 Delay-Adjusted Incidence<sup>a</sup>, 1975-2009</u>														
All Races	1975-83	-4.8*	1983-91	-1.0	1991-09	-3.1*							-3.1*	-3.1*
White	1975-85	-4.6*	1985-90	0.3	1990-09	-2.9*							-2.9*	-2.9*
Black	1975-09	-3.9*											-3.9*	-3.9*
<u>SEER 13 Delay-Adjusted Incidence<sup>b</sup>, 1992-2009</u>														
All Races	1992-09	-3.0*											-3.0*	-3.0*
White	1992-09	-2.6*											-2.6*	-2.6*
Black	1992-09	-3.7*											-3.7*	-3.7*
<u>SEER 9 Observed Incidence<sup>a</sup>, 1975-2009</u>														
All Races	1975-83	-4.8*	1983-91	-1.0	1991-09	-3.2*							-3.2*	-3.2*
White	1975-85	-4.7*	1985-90	0.4	1990-09	-3.1*							-3.1*	-3.1*
Black	1975-09	-3.9*											-3.9*	-3.9*
<u>SEER 13 Observed Incidence<sup>b</sup>, 1992-2009</u>														
All Races	1992-09	-3.1*											-3.1*	-3.1*
White	1992-09	-2.7*											-2.7*	-2.7*
White NH <sup>ef</sup>	1992-09	-2.8*											-2.8*	-2.8*
Black	1992-09	-3.8*											-3.8*	-3.8*
Black NH <sup>ef</sup>	1992-09	-3.7*											-3.7*	-3.7*
API <sup>e</sup>	1992-09	-5.5*											-5.5*	-5.5*
AI/AN <sup>eg</sup>	1992-09	-3.3											-3.3	-3.3
Hispanic <sup>f</sup>	1992-09	-4.0*											-4.0*	-4.0*
<u>U.S. Cancer Mortality<sup>c</sup>, 1975-2009</u>														
All Races	1975-84	-4.3*	1984-94	-1.8*	1994-04	-3.5*	2004-07	0.5	2007-09	-4.1			-2.3*	-1.8
White	1975-84	-4.6*	1984-96	-1.8*	1996-04	-3.5*	2004-07	1.4	2007-09	-5.1			-2.2	-1.9
Black	1975-79	-5.5*	1979-93	-2.7*	1993-05	-4.5*	2005-09	-1.0					-3.0*	-1.0
<u>U.S. Cancer Mortality<sup>c</sup>, 1992-2009</u>														
All Races	1992-04	-3.4*	2004-07	0.3	2007-09	-4.0							-2.3*	-1.9
White	1992-94	-0.2	1994-04	-3.4*	2004-07	1.3	2007-09	-5.0					-2.2	-1.9
White NH <sup>ef</sup>	1992-00	-2.7*	2000-04	-4.5*	2004-07	2.1	2007-09	-4.8					-2.5	-1.4
Black	1992-05	-4.6*	2005-09	-0.9									-3.0*	-0.9
Black NH <sup>ef</sup>	1992-05	-4.5*	2005-09	-1.7									-3.3*	-1.7
API <sup>e</sup>	1992-09	-3.9*											-3.9*	-3.9*
AI/AN <sup>eg</sup>	1992-09	-3.6*											-3.6*	-3.6*
Hispanic <sup>f</sup>	1992-09	-2.5*											-2.5*	-2.5*

Joinpoint Regression Program Version 3.5, April 2011, National Cancer Institute. (<http://surveillance.cancer.gov/joinpoint/>).

The APC is the Annual Percent Change based on rates age-adjusted to the 2000 US Std Population (19 age groups - Census P25-1130).

Trends are from the SEER 9 areas (San Francisco, Connecticut, Detroit, Hawaii, Iowa, New Mexico, Seattle, Utah, and Atlanta).

Trends are from the SEER 13 areas (SEER 9 Areas, Los Angeles, San Jose-Monterey, Rural Georgia, and the Alaska Native Registry).

Trends are from US Mortality Files, National Center for Health Statistics, Centers for Disease Control and Prevention.

The AAPC is the Average Annual Percent Change and is based on the APCs calculated by Joinpoint.

API - Asian/Pacific Islander, AI/AN - American Indian/Alaska Native, NH - Non-Hispanic

Hispanic and Non-Hispanic are not mutually exclusive from whites, blacks, Asian/Pacific Islanders, and American Indians/Alaska

Natives. Incidence data for Hispanics and Non-Hispanics are based on NHIA and exclude cases from the Alaska Native Registry.

The Hispanic and Non-Hispanic mortality trends exclude deaths from CT, DC, ME, MD, MN, NH, NY, ND, SC, OK and VT.

Data for American Indian/Alaska Native are based on the CHSDA (Contract Health Service Delivery Area) counties.

\* The APC/AAPC is significantly different from zero ( $p < .05$ ).

- Joinpoint regression line analysis could not be performed on data series.

Table 5.4  
Cancer of the Cervix Uteri (Invasive)

Delay-adjusted SEER Incidence<sup>a</sup> Rates by Year, Race and Age

Year of Diagnosis:	All Races, Females			White Females			Black Females		
	All	<50	50+	All	<50	50+	All	<50	50+
1975	14.79	9.66	28.22	13.23	8.83	24.77	33.10	17.55	73.82
1976	14.26	9.50	26.74	12.85	8.70	23.74	29.41	16.06	64.38
1977	13.03	8.44	25.05	11.70	7.56	22.53	28.30	15.90	60.78
1978	12.53	8.29	23.63	11.35	7.71	20.87	24.14	12.35	55.00
1979	12.76	8.68	23.44	10.97	7.55	19.94	28.89	16.10	62.38
1980	12.24	8.12	23.03	10.99	7.31	20.60	23.43	13.50	49.44
1981	10.76	7.34	19.70	9.54	6.59	17.25	24.00	13.61	51.22
1982	10.62	7.13	19.78	9.41	6.69	16.51	21.82	10.15	52.38
1983	10.51	7.31	18.88	9.58	6.73	17.05	18.84	11.89	37.04
1984	11.04	8.00	19.00	10.00	7.40	16.80	21.09	12.60	43.34
1985	10.22	7.06	18.48	9.14	6.73	15.46	19.00	9.52	43.82
1986	10.82	7.86	18.57	9.71	7.30	15.99	18.40	10.73	38.48
1987	10.01	7.11	17.63	8.99	6.87	14.55	18.77	8.71	45.13
1988	10.60	7.88	17.71	9.54	7.46	14.99	19.10	10.46	41.75
1989	10.71	7.92	18.00	10.07	7.90	15.76	15.70	7.97	35.96
1990	10.66	8.06	17.48	9.95	7.73	15.77	16.85	9.81	35.28
1991	10.06	7.06	17.92	9.27	6.81	15.70	16.35	9.23	35.00
1992	9.94	7.47	16.43	9.43	7.21	15.25	14.19	10.05	25.02
1993	9.65	7.05	16.46	9.18	7.02	14.84	13.76	8.89	26.53
1994	9.47	6.90	16.21	8.74	6.81	13.77	14.06	6.96	32.65
1995	8.91	6.83	14.35	7.99	6.55	11.76	13.62	7.90	28.58
1996	9.66	7.41	15.55	8.77	7.16	12.99	14.53	8.35	30.71
1997	9.25	7.13	14.80	8.41	6.92	12.30	13.60	8.04	28.17
1998	9.12	7.09	14.45	8.46	6.88	12.61	13.14	9.00	23.99
1999	8.28	6.54	12.83	7.84	6.61	11.07	13.42	8.06	27.46
2000	7.74	5.88	12.59	7.48	5.96	11.47	10.27	6.43	20.31
2001	7.99	5.90	13.46	7.44	5.83	11.63	11.32	5.04	27.78
2002	7.45	5.69	12.05	7.05	5.71	10.54	10.49	6.63	20.61
2003	7.33	5.75	11.46	6.88	5.68	10.04	10.82	6.11	23.15
2004	7.17	5.51	11.52	6.87	5.64	10.08	10.69	6.63	21.31
2005	6.84	5.44	10.53	6.61	5.47	9.60	8.76	5.33	17.75
2006	6.98	5.58	10.67	6.85	5.70	9.87	8.83	5.11	18.57
2007	6.67	5.24	10.43	6.50	5.54	9.01	8.61	4.55	19.25
2008	6.76	5.35	10.45	6.47	5.30	9.51	9.48	5.85	18.97
2009	7.06	5.67	10.69	6.99	6.06	9.43	8.19	4.42	18.05

Additional information on the model used to delay-adjust SEER Incidence rates can be found at <http://surveillance.cancer.gov/delay/>.

<sup>a</sup> SEER 9 areas (San Francisco, Connecticut, Detroit, Hawaii, Iowa, New Mexico, Seattle, Utah, and Atlanta). Rates are per 100,000 and are age-adjusted to the 2000 US Std Population (19 age groups - Census P25-1130).

- Delay-adjusted rate is not shown for observed rates based on less than 16 cases for the time interval.

Table 5.5  
Cancer of the Cervix Uteri (Invasive)

Age-adjusted SEER Incidence<sup>a</sup> Rates by Year, Race and Age

	All Races, Females			White Females			Black Females		
	All	<50	50+	All	<50	50+	All	<50	50+
Year of Diagnosis:									
1975-2009	9.41	6.89	16.00	8.74	6.68	14.13	14.90	8.40	31.94
1975	14.79	9.66	28.22	13.23	8.83	24.77	33.10	17.55	73.82
1976	14.26	9.50	26.74	12.85	8.70	23.74	29.41	16.06	64.38
1977	13.03	8.44	25.05	11.70	7.56	22.53	28.30	15.90	60.78
1978	12.53	8.29	23.63	11.35	7.71	20.87	24.14	12.35	55.00
1979	12.76	8.68	23.44	10.97	7.55	19.94	28.89	16.10	62.38
1980	12.24	8.12	23.03	10.99	7.31	20.60	23.43	13.50	49.44
1981	10.76	7.34	19.70	9.54	6.59	17.25	24.00	13.61	51.22
1982	10.62	7.13	19.77	9.41	6.69	16.51	21.82	10.15	52.38
1983	10.51	7.31	18.88	9.58	6.73	17.04	18.84	11.89	37.03
1984	11.04	8.00	19.00	9.99	7.40	16.79	21.08	12.59	43.32
1985	10.21	7.06	18.47	9.14	6.73	15.45	18.99	9.52	43.80
1986	10.82	7.86	18.57	9.70	7.30	15.98	18.39	10.72	38.46
1987	10.01	7.10	17.62	8.99	6.87	14.54	18.76	8.70	45.10
1988	10.59	7.88	17.70	9.53	7.45	14.97	19.09	10.45	41.71
1989	10.70	7.92	17.99	10.06	7.89	15.74	15.68	7.96	35.92
1990	10.65	8.06	17.46	9.93	7.71	15.74	16.83	9.80	35.23
1991	10.05	7.06	17.90	9.25	6.80	15.68	16.33	9.22	34.96
1992	9.93	7.46	16.41	9.41	7.19	15.22	14.17	10.03	24.98
1993	9.64	7.04	16.44	9.16	7.00	14.81	13.74	8.87	26.48
1994	9.46	6.89	16.18	8.71	6.80	13.74	14.03	6.94	32.58
1995	8.90	6.82	14.33	7.97	6.54	11.73	13.58	7.88	28.51
1996	9.64	7.40	15.52	8.74	7.14	12.94	14.49	8.33	30.62
1997	9.22	7.11	14.76	8.38	6.90	12.26	13.56	8.02	28.07
1998	9.10	7.07	14.41	8.43	6.85	12.56	13.09	8.97	23.90
1999	8.25	6.51	12.79	7.80	6.57	11.01	13.35	8.02	27.33
2000	7.71	5.86	12.54	7.43	5.92	11.40	10.21	6.39	20.20
2001	7.95	5.87	13.40	7.38	5.79	11.55	11.25	5.01	27.60
2002	7.41	5.67	11.99	6.99	5.67	10.45	10.42	6.58	20.46
2003	7.28	5.71	11.39	6.82	5.63	9.94	10.73	6.06	22.96
2004	7.12	5.47	11.45	6.79	5.58	9.97	10.58	6.56	21.11
2005	6.79	5.40	10.45	6.54	5.41	9.49	8.66	5.27	17.55
2006	6.93	5.53	10.58	6.76	5.62	9.74	8.72	5.04	18.34
2007	6.60	5.18	10.32	6.39	5.45	8.86	8.48	4.48	18.96
2008	6.66	5.27	10.30	6.33	5.19	9.31	9.29	5.73	18.60
2009	6.88	5.52	10.42	6.74	5.84	9.09	7.91	4.27	17.45

<sup>a</sup> SEER 9 areas (San Francisco, Connecticut, Detroit, Hawaii, Iowa, New Mexico, Seattle, Utah, and Atlanta). Rates are per 100,000 and are age-adjusted to the 2000 US Std Population (19 age groups - Census P25-1130).  
- Statistic not shown. Rate based on less than 16 cases for the time interval.

Table 5.6  
Cancer of the Cervix Uteri (Invasive)

Age-adjusted U.S. Death<sup>a</sup> Rates by Year, Race and Age

Year of Death:	All Races, Females			White Females			Black Females		
	All	<50	50+	All	<50	50+	All	<50	50+
1975-2009	3.36	1.58	8.00	2.95	1.42	6.96	7.06	2.86	18.06
1975	5.55	2.38	13.87	4.75	1.95	12.08	13.35	5.73	33.29
1976	5.43	2.19	13.92	4.68	1.86	12.06	12.86	4.89	33.75
1977	4.96	2.00	12.71	4.22	1.62	11.02	12.19	4.97	31.10
1978	4.85	2.11	12.00	4.15	1.78	10.38	11.64	4.78	29.60
1979	4.58	1.91	11.58	3.95	1.58	10.15	10.61	4.48	26.67
1980	4.45	1.96	10.97	3.77	1.60	9.45	10.78	4.64	26.86
1981	4.32	1.83	10.86	3.74	1.57	9.39	9.89	3.74	26.00
1982	4.10	1.77	10.20	3.51	1.54	8.66	9.77	3.63	25.85
1983	4.04	1.80	9.92	3.43	1.53	8.40	9.76	3.87	25.20
1984	3.94	1.81	9.51	3.36	1.54	8.12	9.27	3.92	23.28
1985	3.82	1.71	9.36	3.27	1.49	7.92	8.98	3.36	23.70
1986	3.82	1.77	9.20	3.22	1.47	7.80	9.23	4.00	22.93
1987	3.64	1.74	8.61	3.13	1.51	7.40	8.22	3.60	20.31
1988	3.61	1.69	8.63	3.10	1.52	7.24	8.15	2.98	21.72
1989	3.59	1.70	8.54	3.05	1.50	7.10	8.60	3.26	22.57
1990	3.66	1.79	8.56	3.19	1.58	7.40	7.77	3.41	19.18
1991	3.49	1.70	8.20	3.01	1.51	6.97	7.65	3.15	19.41
1992	3.52	1.74	8.19	3.01	1.53	6.89	8.07	3.38	20.37
1993	3.41	1.67	7.99	2.95	1.48	6.78	7.69	3.14	19.63
1994	3.38	1.66	7.86	3.00	1.50	6.93	6.71	2.85	16.82
1995	3.24	1.63	7.47	2.82	1.45	6.39	6.98	2.97	17.50
1996	3.21	1.58	7.49	2.87	1.47	6.54	6.20	2.52	15.85
1997	3.14	1.61	7.16	2.76	1.45	6.20	6.47	2.84	15.98
1998	2.98	1.57	6.66	2.65	1.45	5.77	5.91	2.55	14.72
1999	2.83	1.37	6.66	2.57	1.33	5.82	5.41	1.88	14.64
2000	2.78	1.36	6.52	2.47	1.25	5.68	5.43	2.17	13.97
2001	2.67	1.37	6.09	2.43	1.32	5.36	4.83	1.92	12.46
2002	2.55	1.29	5.87	2.28	1.20	5.12	4.98	2.07	12.59
2003	2.49	1.24	5.75	2.23	1.16	5.05	4.66	1.93	11.82
2004	2.42	1.26	5.46	2.18	1.18	4.80	4.52	1.92	11.33
2005	2.42	1.25	5.51	2.21	1.17	4.94	4.38	1.96	10.71
2006	2.43	1.24	5.54	2.21	1.16	4.97	4.34	1.90	10.71
2007	2.42	1.22	5.58	2.20	1.14	4.99	4.33	1.90	10.70
2008	2.38	1.21	5.44	2.17	1.14	4.86	4.19	1.80	10.47
2009	2.30	1.22	5.11	2.07	1.15	4.51	4.19	1.84	10.35

<sup>a</sup> US Mortality Files, National Center for Health Statistics, Centers for Disease Control and Prevention.  
Rates are per 100,000 and are age-adjusted to the 2000 US Std Population (19 age groups - Census P25-1130).  
- Statistic not shown. Rate based on less than 16 cases for the time interval.

Table 5.7  
Cancer of the Cervix Uteri (Invasive)

SEER Incidence<sup>a</sup> and U.S. Death<sup>b</sup> Rates, Age-Adjusted and Age-Specific Rates, by Race

	SEER Incidence <sup>a</sup>			U.S. Mortality <sup>b</sup>		
	All Races Females	White Females	Black Females	All Races Females	White Females	Black Females
<u>Age-Adjusted Rates, 2005-2009</u>						
Age at Diagnosis/Death:						
All ages	8.1	8.0	9.8	2.4	2.2	4.3
Under 65	7.5	7.6	8.1	1.9	1.7	2.9
65 and over	12.1	10.7	21.5	6.1	5.3	13.6
All ages (IARC world std) <sup>c</sup>	6.4	6.3	7.4	1.8	1.6	3.1
<u>Age-Specific Rates, 2005-2009</u>						
Age at Diagnosis/Death:						
<1	-	-	-	-	-	-
1-4	-	-	-	-	-	-
5-9	-	-	-	-	-	-
10-14	-	-	-	-	-	-
15-19	0.2	0.2	-	-	-	-
20-24	1.5	1.5	1.7	0.1	0.1	0.2
25-29	5.1	5.6	4.2	0.5	0.4	0.7
30-34	10.5	11.4	8.8	1.3	1.2	1.9
35-39	14.6	15.6	12.1	2.4	2.4	3.2
40-44	15.1	15.3	16.2	3.3	3.0	5.3
45-49	14.0	13.7	14.6	4.1	3.8	6.6
50-54	13.2	12.6	16.9	4.6	4.2	7.2
55-59	12.5	11.8	17.1	5.0	4.6	7.8
60-64	13.3	11.9	20.3	5.2	4.7	9.6
65-69	14.1	13.0	22.1	5.8	5.0	12.4
70-74	13.0	11.7	18.8	5.7	5.1	11.3
75-79	10.9	9.5	21.0	5.9	5.1	13.8
80-84	10.4	8.8	22.2	6.7	6.0	14.8
85+	9.8	8.2	25.9	7.1	6.2	19.4

<sup>a</sup> SEER 18 areas. Rates are per 100,000 and are age-adjusted to the 2000 US Std Population (19 age groups - Census P25-1130), unless noted.

<sup>b</sup> US Mortality Files, National Center for Health Statistics, Centers for Disease Control and Prevention.

<sup>c</sup> Rates are per 100,000 and are age-adjusted to the 2000 US Std Population (19 age groups - Census P25-1130), unless noted.

- Rates are per 100,000 and are age-adjusted to the IARC world standard population.

- Statistic not shown. Rate based on less than 16 cases for the time interval.

Table 5.8  
Cancer of the Cervix Uteri (Invasive)

5-Year Relative and Period Survival (Percent) by Race, Diagnosis Year, Stage and Age

	All Races, Females			White Females			Black Females		
	All	<50	50+	All	<50	50+	All	<50	50+
5-Year Relative Survival (Percent)									
Year of Diagnosis:									
1960-1963 <sup>a</sup>	-	-	-	58	-	-	47	-	-
1970-1973 <sup>a</sup>	-	-	-	64	-	-	61	-	-
1975-1977 <sup>b</sup>	69.1	82.5	57.9	69.8	83.9	58.2	64.5	75.6	54.9
1978-1980 <sup>b</sup>	67.5	78.5	57.8	68.2	79.8	58.4	61.0	70.6	51.9
1981-1983 <sup>b</sup>	67.1	79.5	55.1	67.9	80.7	55.3	59.4	73.6	46.7
1984-1986 <sup>b</sup>	67.3	78.0	55.3	69.0	79.7	56.5	57.6	68.0	47.7
1987-1989 <sup>b</sup>	70.1	79.6	58.3	72.5	82.6	58.6	57.4	63.3	52.3
1990-1992 <sup>b</sup>	69.6	79.0	57.0	70.9	81.2	56.6	58.0	63.5	51.0
1993-1995 <sup>b</sup>	72.6	81.8	59.8	74.2	83.5	60.2	63.1	71.0	53.4
1996-1998 <sup>b</sup>	72.7	81.0	60.4	73.7	82.7	59.2	64.9	68.0	61.0
1999-2001 <sup>b</sup>	72.4	83.9	56.4	73.4	85.7	55.2	66.0	73.9	56.8
2002-2008 <sup>b</sup>	68.8	79.2 <sup>f</sup>	55.0	70.2	81.4	54.6	61.1	69.1 <sup>f</sup>	51.7
5-Year Period Survival (Percent) <sup>cd</sup>									
2008	67.5	77.1	55.1	69.0	79.0	55.6	56.5	64.8	47.5
Stage Distribution (%) 2002-2008 <sup>ee</sup>									
All Stages									
Number of cases	22,537	12,581	9,956	17,030	9,751	7,279	3,199	1,652	1,547
Percent	100%	100%	100%	100%	100%	100%	100%	100%	100%
Localized	47	59	33	49	60	33	40	49	30
Regional	36	30	45	35	28	45	41	38	45
Distant	12	8	17	12	8	17	14	9	19
Unstaged	4	3	6	4	3	5	5	4	6
5-Year Relative Survival (Percent), 2002-2008 <sup>c</sup>									
Age at Diagnosis:									
Ages <45	78.9	-	-	80.5	-	-	68.6	-	-
Ages 45-54	67.8	-	-	69.0	-	-	58.4	-	-
Ages 55-64	59.3	-	-	59.0	-	-	53.7	-	-
Ages 65-74	56.3	-	-	56.5	-	-	49.2	-	-
Ages 75+	36.1	-	-	35.6	-	-	33.1	-	-
Ages <65	72.0	-	-	73.4	-	-	62.5	-	-
Ages 65+	47.6	-	-	47.7	-	-	41.6	-	-
Stage <sup>ee</sup> :									
All Stages	67.9	77.1	55.9	69.2	78.6	56.3	58.5	66.9	48.8
Localized	90.7	93.3	84.8	91.6	94.0	85.9	83.6	87.8	75.2
Regional	56.7	61.7	52.4	57.6	63.5	52.3	50.8	52.7	48.9
Distant	16.2	20.3	13.5	17.1	21.9	13.6	10.8	10.1	11.2
Unstaged	54.8	76.8	37.0	54.6	76.6	37.4	53.9	75.4 <sup>g</sup>	34.1 <sup>g</sup>

<sup>a</sup> Based on End Results data from a series of hospital registries and one population-based registry.

<sup>b</sup> SEER 9 areas (San Francisco, Connecticut, Detroit, Hawaii, Iowa, New Mexico, Seattle, Utah, Atlanta).

Based on follow-up of patients into 2009.

<sup>c</sup> SEER 18 areas (San Francisco, Connecticut, Detroit, Hawaii, Iowa, New Mexico, Seattle, Utah, Atlanta, San Jose-Monterey, Los Angeles, Alaska Native Registry, Rural Georgia, California excluding SF/SJM/LA, Kentucky, Louisiana, New Jersey and Georgia excluding ATL/RG).

Based on follow-up of patients into 2009.

<sup>d</sup> Period survival provides a 2008 estimate of survival by piecing together the most recent conditional survival estimates from several cohorts. It is computed here using three year calendar blocks (2006-2008: 0-1 year survival), (2005-2007: 1-2 year survival), (2004-2006: 2-3 year survival), (2003-2005: 3-4 year survival), (2002-2004: 4-5 years survival).

<sup>e</sup> Stage at diagnosis is classified using SEER Summary Stage 2000.

<sup>f</sup> The difference between 1975-1977 and 2002-2008 is statistically significant (p<.05).

<sup>g</sup> The standard error is between 5 and 10 percentage points.

<sup>h</sup> The standard error is greater than 10 percentage points.

- Statistic could not be calculated due to fewer than 25 cases during the time period.



Table 5.9  
Cancer of the Cervix Uteri (Invasive)

SEER<sup>a</sup> Relative Survival (Percent)  
By Year of Diagnosis

All Races, Females

Year of Diagnosis

	1975- 1979	1980- 1984	1985- 1989	1990	1991	1992	1993	1994	1995	1996	1997	1998	1999	2000	2001	2002	2003	2004	2005	2006	2007	2008
Survival Time																						
1-year	87.1	87.6	87.5	88.3	88.9	87.4	89.3	87.9	89.9	89.2	89.4	88.6	89.9	88.7	86.1	88.1	87.0	86.7	87.6	86.4	89.0	87.5
2-year	78.2	77.5	78.1	79.9	79.9	78.4	80.0	80.5	82.4	82.3	80.7	81.5	83.1	81.5	79.4	79.7	79.4	77.5	77.5	78.6	78.8	
3-year	73.3	72.8	73.3	75.6	74.4	74.1	75.8	76.4	78.9	78.0	76.0	76.8	78.5	76.5	75.6	74.7	75.8	73.1	72.1	75.4		
4-year	70.4	69.7	70.6	73.3	70.9	70.4	73.0	73.8	76.2	74.8	73.1	74.0	76.2	74.2	72.9	72.1	72.4	70.0	69.8			
5-year	68.4	67.7	68.6	72.1	68.7	67.8	71.0	72.0	74.9	73.7	71.8	72.5	74.5	72.2	70.4	69.4	70.2	67.1				
6-year	67.2	65.8	67.3	70.7	67.0	66.5	70.5	70.3	73.6	72.9	70.1	71.0	73.4	71.2	69.2	68.5	68.4					
7-year	66.1	64.1	66.2	69.9	66.2	65.4	69.7	68.9	72.3	71.8	69.7	69.7	72.9	70.1	67.7	68.0						
8-year	65.1	62.8	65.1	68.9	64.9	64.7	69.1	68.0	71.6	70.7	69.1	69.3	72.5	69.8	67.3							
9-year	64.3	62.1	64.5	67.0	64.2	64.1	68.4	67.5	70.6	69.4	67.6	68.6	72.3	68.8								
10-year	63.2	61.4	63.7	65.6	63.9	63.7	68.0	66.7	69.8	68.7	66.8	67.7	70.8									
11-year	62.4	60.8	63.1	64.9	63.7	62.6	67.8	65.8	69.5	68.1	65.8	66.9										
12-year	61.7	60.0	62.3	64.6	63.3	61.5	67.0	65.2	68.3	66.8	65.6											
13-year	61.1	59.4	61.8	64.1	62.5	61.3	66.6	64.4	66.8	66.0												
14-year	60.5	58.6	61.2	63.3	61.9	60.7	65.8	64.0	66.0													
15-year	59.8	57.8	60.4	62.9	61.3	59.9	65.2	63.5														
16-year	59.2	57.2	59.7	62.9	60.0	59.3	64.4															
17-year	58.6	56.3	58.9	62.4	60.0	58.6																
18-year	58.1	55.4	58.7	61.4	58.8																	
19-year	57.3	54.8	58.2	60.4																		
20-year	56.6	54.2	57.1																			

<sup>a</sup> Based on the SEER 9 areas (San Francisco, Connecticut, Detroit, Hawaii, Iowa, New Mexico, Seattle, Utah, and Atlanta).

Table 5.10  
Cancer of the Cervix Uteri (Invasive)

Risk of Being Diagnosed With Cancer in 10, 20 and 30 Years,  
Lifetime Risk of Being Diagnosed with Cancer Given Alive and Cancer-Free at Current Age, and  
Lifetime Risk of Dying from Cancer Given Alive at Current Age  
Females, 2007-2009 By Race/Ethnicity

Race/ Ethnicity	Current Age	Risk of Being Diagnosed with Cancer				Risk of Dying from Cancer	Race/ Ethnicity	Current Age	Risk of Being Diagnosed with Cancer				Risk of Dying from Cancer
		+10 yrs	+20 yrs	+30 yrs	Ever				+10 yrs	+20 yrs	+30 yrs	Ever	
All Races	0	0.00	0.00	0.04	0.68	0.23	Asian/ Pacific Islander	0	0.00	0.00	0.02	0.69	0.24
	10	0.00	0.04	0.16	0.69	0.23		10	0.00	0.02	0.08	0.70	0.24
	20	0.04	0.16	0.30	0.69	0.23		20	0.02	0.08	0.19	0.70	0.24
	30	0.12	0.26	0.39	0.65	0.23		30	0.07	0.18	0.31	0.69	0.24
	40	0.14	0.27	0.38	0.54	0.22		40	0.11	0.24	0.39	0.62	0.23
	50	0.13	0.25	0.34	0.40	0.18		50	0.13	0.28	0.40	0.52	0.21
	60	0.13	0.22	0.27	0.29	0.14		60	0.15	0.28	0.36	0.39	0.17
	70	0.11	0.17	-	0.18	0.10		70	0.13	0.23	-	0.26	0.14
80	0.08	-	-	0.10	0.07	80	0.11	-	-	0.14	0.09		
White	0	0.00	0.00	0.04	0.65	0.21	American Indian/ Alaska Native <sup>a</sup>	0	0.00	0.01	0.06	0.65	0.38
	10	0.00	0.04	0.17	0.66	0.21		10	0.01	0.06	0.19	0.66	0.38
	20	0.04	0.17	0.31	0.66	0.21		20	0.06	0.19	0.33	0.65	0.39
	30	0.13	0.27	0.39	0.63	0.21		30	0.13	0.28	0.38	0.60	0.38
	40	0.14	0.26	0.37	0.50	0.19		40	0.15	0.25	0.35	0.48	0.35
	50	0.12	0.23	0.31	0.36	0.16		50	0.11	0.21	0.31	0.35	0.30
	60	0.11	0.20	0.24	0.26	0.13		60	0.11	0.21	0.25	0.25	0.26
	70	0.10	0.14	-	0.16	0.09		70	0.12	0.16	-	0.16	0.19
80	0.06	-	-	0.08	0.06	80	0.06	-	-	0.06	0.17		
Black	0	0.00	0.00	0.03	0.84	0.40	Hispanic <sup>b</sup>	0	0.00	0.00	0.04	1.05	0.33
	10	0.00	0.03	0.13	0.86	0.41		10	0.00	0.04	0.19	1.06	0.33
	20	0.03	0.13	0.28	0.86	0.41		20	0.04	0.19	0.37	1.06	0.34
	30	0.10	0.25	0.41	0.84	0.41		30	0.15	0.33	0.52	1.02	0.33
	40	0.15	0.31	0.48	0.75	0.39		40	0.19	0.38	0.57	0.88	0.31
	50	0.17	0.34	0.48	0.62	0.34		50	0.19	0.39	0.54	0.71	0.28
	60	0.19	0.34	0.44	0.49	0.29		60	0.20	0.36	0.47	0.53	0.22
	70	0.18	0.30	-	0.35	0.22		70	0.17	0.29	-	0.36	0.17
80	0.17	-	-	0.24	0.15	80	0.14	-	-	0.22	0.12		

Devcan Version 6.6.1, April 2012, National Cancer Institute (<http://surveillance.cancer.gov/devcan/>).

Source: Incidence data are from the SEER 18 areas (San Francisco, Connecticut, Detroit, Hawaii, Iowa, New Mexico, Seattle, Utah, Atlanta, San Jose-Monterey, Los Angeles, Alaska Native Registry, Rural Georgia, California excluding SF/SJM/LA, Kentucky, Louisiana, New Jersey, and Georgia excluding ATL/RG). Mortality data are from the NCHS public use data file for the total US.

<sup>a</sup> Underlying incidence and mortality data for American Indian/Alaska Native are based on the CHSDA (Contract Health Service Delivery Area) counties.

<sup>b</sup> Hispanic is not mutually exclusive from whites, blacks, Asian/Pacific Islanders, and American Indians/Alaska Natives. Underlying incidence data for Hispanics are based on NHIA and exclude cases from the Alaska Native Registry. Underlying mortality data for Hispanics exclude deaths from the District of Columbia, Minnesota, New Hampshire, North Dakota and South Carolina.

- Statistic could not be calculated.

A percent of 0.00 represents a value that is below 0.005.

Table 5.11  
Cancer of the Cervix Uteri (Invasive)

SEER Incidence and U.S. Mortality  
Age-Adjusted Rates and Trends<sup>a</sup>  
By Race/Ethnicity

SEER Incidence	SEER 18 Areas <sup>b</sup>	SEER 13 Areas <sup>b</sup>	SEER 9 Areas <sup>b</sup>
	Rate 2005-2009	Trend 2000-2009 <sup>c</sup>	Trend 2000-2009 <sup>d</sup>
	Rate per 100,000 persons	AAPC (%)	AAPC (%)
RACE/ETHNICITY	Females	Females	Females
All Races	8.1	-2.6*	-2.6*
White	8.0	-2.2*	-2.3*
White Hispanic <sup>e</sup>	12.1	-3.9*	-
White Non-Hispanic <sup>e</sup>	7.1	-2.1*	-
Black	9.8	-3.9*	-3.7*
Asian/Pacific Islander	7.2	-4.3*	-
Amer Ind/Alaska Nat <sup>f</sup>	8.1	-0.9	-
Hispanic <sup>e</sup>	11.8	-3.8*	-
<u>U.S. Mortality<sup>g</sup></u>			
	Rate 2005-2009	Trend 2000-2009 <sup>h</sup>	
	Rate per 100,000 persons	AAPC (%)	
RACE/ETHNICITY	Females	Females	
All Races	2.4	-1.9*	
White	2.2	-1.7*	
White Hispanic <sup>e</sup>	3.2	-2.7*	
White Non-Hispanic <sup>e</sup>	2.1	-1.9*	
Black	4.3	-2.7*	
Asian/Pacific Islander	2.0	-3.8*	
Amer Ind/Alaska Nat			
Total U.S.	2.6	-2.4*	
CHSDA Counties	3.5	-1.8	
Non-CHSDA Counties	1.6	-	
Hispanic <sup>e</sup>	3.0	-2.6*	

The AAPC is the Average Annual Percent Change over the time interval. The AAPCs are calculated by the Joinpoint Regression Program Version 3.5, April 2011, National Cancer Institute.

- Statistic not shown. Rate based on less than 16 cases for the time interval.

Trend based on less than 10 cases for at least one year within the time interval.

a Rates are age-adjusted to the 2000 US Std Population (19 age groups - Census P25-1130). Trends are based on rates age-adjusted to the 2000 US Std Population (19 age groups - Census P25-1130).

b The SEER 9 areas are San Francisco, Connecticut, Detroit, Hawaii, Iowa, New Mexico, Seattle, Utah, and Atlanta.

The SEER 13 areas comprise the SEER 9 areas plus San Jose-Monterey, Los Angeles, the Alaska Native Registry, and Rural Georgia.

The SEER 18 areas comprise the SEER 13 areas plus California excluding SF/SJM/LA, Kentucky, Louisiana, New Jersey, and Georgia excluding ATL/RG.

c The 2000-2009 AAPC estimates are based on a Joinpoint analysis with up to 3 Joinpoints over diagnosis years 1992-2009.

d The 2000-2009 AAPC estimates are based on a Joinpoint analysis with up to 5 Joinpoints over diagnosis years 1975-2009.

e Hispanic and Non-Hispanic are not mutually exclusive from whites, blacks, Asian/Pacific Islanders, and American Indians/Alaska Natives. Incidence data for Hispanics and Non-Hispanics are based on NHIA and exclude cases from the Alaska Native Registry. The 2005-2009 Hispanic and Non-Hispanic death rates exclude deaths from the District of Columbia, North Dakota, and South Carolina. The 2000-2009 Hispanic and Non-Hispanic mortality trends exclude deaths from Connecticut, the District of Columbia, Maine, Maryland, Minnesota, New Hampshire, New York, North Dakota, Oklahoma, South Carolina and Vermont.

f Incidence data for American Indian/Alaska Native are based on the CHSDA(Contract Health Service Delivery Area) counties.

g US Mortality Files, National Center for Health Statistics, CDC.

h The 2000-2009 mortality AAPCs are based on a Joinpoint analysis using years of death 1992-2009.

\* The APC is significantly different from zero (p<.05).

Table 5.12  
Cancer of the Cervix Uteri (Invasive)

Age-Adjusted SEER Incidence Rates<sup>a</sup>  
By Registry, Race and Age

	All Races			Whites			Blacks		
	All Ages	Ages <50	Ages 50+	All Ages	Ages <50	Ages 50+	All Ages	Ages <50	Ages 50+
<u>SEER Incidence Rates<sup>a</sup>, 2005-2009</u>									
California	8.27	6.42	13.13	8.50	6.94	12.58	7.30	4.62	14.34
Greater Bay Area	6.40	4.89	10.36	6.63	5.57	9.40	5.86	3.48	12.08
San Francisco-Oakland	5.80	4.38	9.51	5.82	4.81	8.48	5.89	3.52	12.11
San Jose-Monterey	7.55	5.81	12.11	8.04	6.90	11.04	-	-	-
Los Angeles	9.93	7.29	16.85	10.32	7.79	16.95	8.17	5.61	14.87
Greater California	8.14	6.53	12.37	8.29	6.96	11.78	7.22	4.14	15.27
Connecticut	6.12	4.70	9.83	5.96	4.80	9.00	7.57	3.46	18.32
Detroit	7.97	6.12	12.79	7.24	6.07	10.31	10.95	6.95	21.42
Georgia	8.17	6.45	12.67	7.86	6.98	10.16	9.72	5.59	20.54
Atlanta	7.08	4.99	12.58	6.43	5.35	9.28	8.74	4.64	19.49
Rural Georgia	9.63	-	18.75	10.85	-	-	-	-	-
Greater Georgia	8.89	7.45	12.66	8.48	7.73	10.45	10.74	6.70	21.33
Hawaii	8.17	7.12	10.93	7.43	6.58	9.65	-	-	-
Iowa	7.00	5.89	9.91	6.76	5.63	9.73	11.71	-	-
Kentucky	8.96	7.03	13.99	8.75	6.87	13.64	10.31	7.09	18.73
Louisiana	9.45	7.78	13.85	8.26	7.44	10.39	12.95	8.67	24.16
New Jersey	8.84	6.68	14.50	8.48	6.69	13.14	12.08	7.85	23.14
New Mexico	7.89	6.52	11.49	8.01	6.83	11.11	-	-	-
Seattle-Puget Sound	6.92	5.98	9.40	6.99	6.23	8.99	5.76	-	-
Utah	5.25	4.38	7.51	5.30	4.54	7.29	-	-	-
9 SEER Areas <sup>b</sup>	6.77	5.38	10.41	6.55	5.50	9.28	8.61	4.96	18.19
11 SEER Areas <sup>b</sup>	7.54	5.87	11.92	7.46	6.13	10.95	8.44	5.08	17.24
13 SEER Areas <sup>b</sup>	7.56	5.89	11.95	7.47	6.13	10.96	8.46	5.05	17.38
18 SEER Areas <sup>b</sup>	8.09	6.38	12.59	7.96	6.60	11.52	9.77	6.05	19.52

<sup>a</sup> Rates are per 100,000 and are age-adjusted to the 2000 US Std Population (19 age groups - Census P25-1130)

<sup>b</sup> The SEER 9 areas are San Francisco, Connecticut, Detroit, Hawaii, Iowa, New Mexico, Seattle, Utah and Atlanta.

The SEER 11 areas comprise the SEER 9 areas plus San Jose-Monterey and Los Angeles.

The SEER 13 areas comprise the SEER 11 areas plus the Alaska Native Registry and Rural Georgia.

The SEER 18 areas comprise the SEER 13 areas plus California excluding SF/SJM/LA, Kentucky, Louisiana, New Jersey and Georgia excluding ATL/RG.

- Statistic not shown. Rate based on less than 16 cases for the time interval.

Table 5.13  
Cancer of the Cervix Uteri (Invasive)

Age-Adjusted SEER Death Rates<sup>a</sup>  
By Registry, Race and Age

	All Races			Whites			Blacks		
	All Ages	Ages <50	Ages 50+	All Ages	Ages <50	Ages 50+	All Ages	Ages <50	Ages 50+
<u>SEER Death Rates<sup>a</sup>, 2005-2009</u>									
California	2.35	1.18	5.42	2.36	1.25	5.25	3.34	1.44	8.29
Greater Bay Area	1.43	0.65	3.45	1.40	0.69	3.26	2.14	-	5.95
San Francisco-Oakland	1.33	0.57	3.33	1.23	0.59	2.92	2.34	-	6.40
San Jose-Monterey	1.62	0.82	3.71	1.70	0.87	3.86	-	-	-
Los Angeles	3.02	1.22	7.74	3.05	1.27	7.72	4.01	1.84	9.71
Greater California	2.36	1.34	5.02	2.36	1.41	4.85	3.31	1.41	8.28
Connecticut	1.64	0.67	4.20	1.64	0.72	4.03	2.37	-	7.44
Detroit	2.48	1.26	5.67	1.96	1.02	4.44	4.29	2.04	10.16
Georgia	2.68	1.32	6.25	2.16	1.18	4.75	4.30	1.63	11.29
Atlanta	2.46	1.02	6.21	1.81	0.83	4.36	3.94	1.26	10.95
Rural Georgia	-	-	-	-	-	-	-	-	-
Greater Georgia	2.83	1.53	6.24	2.33	1.34	4.91	4.67	2.05	11.55
Hawaii	1.93	1.02	4.32	2.06	-	-	-	-	-
Iowa	2.11	1.01	4.99	2.05	0.93	4.98	-	-	-
Kentucky	2.91	1.62	6.30	2.85	1.53	6.30	3.82	2.77	-
Louisiana	3.35	1.98	6.93	2.48	1.57	4.87	5.66	2.87	12.95
New Jersey	2.44	1.15	5.82	2.26	1.00	5.58	4.01	2.24	8.64
New Mexico	2.65	1.55	5.55	2.61	1.57	5.33	-	-	-
Seattle-Puget Sound	1.83	0.80	4.54	1.76	0.73	4.46	-	-	-
Utah	1.30	0.64	3.03	1.23	0.65	2.75	-	-	-
9 SEER Areas <sup>b</sup>	1.93	0.90	4.62	1.76	0.84	4.18	3.45	1.33	9.03
11 SEER Areas <sup>b</sup>	2.16	0.97	5.26	2.03	0.94	4.89	3.52	1.41	9.05
13 SEER Areas <sup>b</sup>	2.16	0.97	5.27	2.02	0.93	4.88	3.54	1.39	9.16
18 SEER Areas <sup>b</sup>	2.38	1.20	5.49	2.22	1.15	5.04	4.04	1.83	9.82
Total U.S.	2.39	1.23	5.43	2.17	1.15	4.85	4.28	1.88	10.58

<sup>a</sup> US Mortality Files, National Center for Health Statistics, Centers for Disease Control and Prevention. Rates are per 100,000 and are age-adjusted to the 2000 US Std Population (19 age groups - Census P25-1130).

<sup>b</sup> The SEER 9 areas are San Francisco, Connecticut, Detroit, Hawaii, Iowa, New Mexico, Seattle, Utah and Atlanta. The SEER 11 areas comprise the SEER 9 areas plus San Jose-Monterey and Los Angeles.

The SEER 13 areas comprise the SEER 11 areas plus the Alaska Native Registry and Rural Georgia.

The SEER 18 areas comprise the SEER 13 areas plus California excluding SF/SJM/LA, Kentucky, Louisiana, New Jersey and Georgia excluding ATL/RG.

- Statistic not shown. Rate based on less than 16 cases for the time interval.

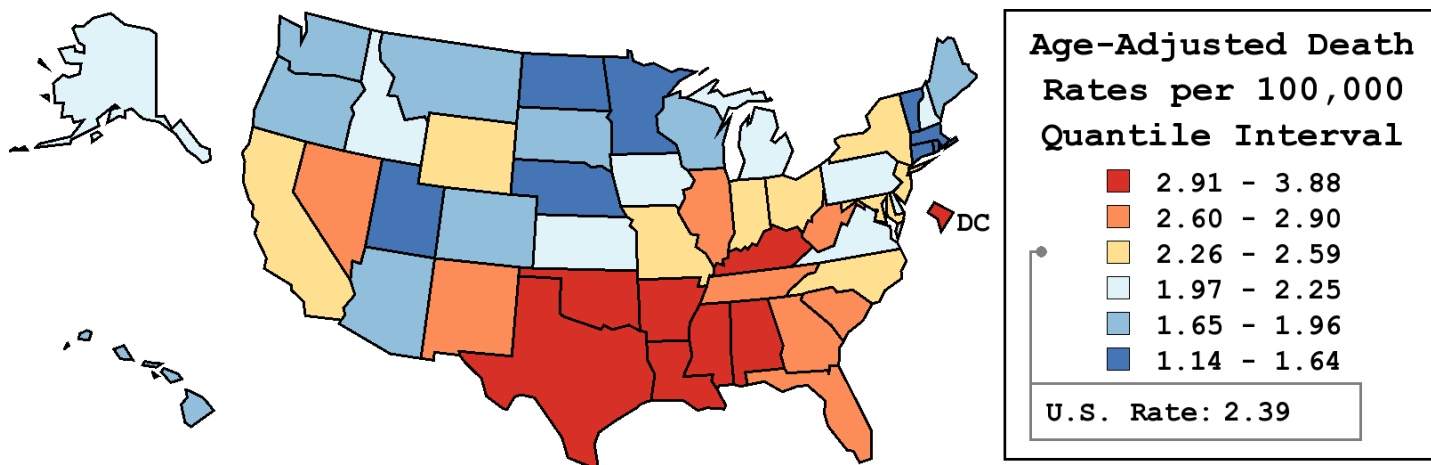
Table 5.14  
Cancer of the Cervix Uteri (Invasive)

Age-Adjusted Cancer Death<sup>a</sup> Rates By State, All Races, 2005-2009

Females

State	Rate	SE	Rank	PD
TOTAL U.S.	2.39	0.02		
High Five States				
Mississippi	3.88 <sup>b</sup>	0.22	(01)	62.23 <sup>c</sup>
Louisiana	3.35 <sup>b</sup>	0.17	(02)	40.17 <sup>c</sup>
Arkansas	3.32 <sup>b</sup>	0.21	(03)	39.10 <sup>c</sup>
Alabama	3.04 <sup>b</sup>	0.15	(04)	27.32 <sup>c</sup>
D.C.	2.94	0.43	(05)	23.07 <sup>c</sup>
Low Five States				
Minnesota	1.49 <sup>b</sup>	0.10	(47)	-37.51 <sup>c</sup>
Rhode Island	1.45 <sup>b</sup>	0.21	(48)	-39.20 <sup>c</sup>
Massachusetts	1.39 <sup>b</sup>	0.09	(49)	-41.90 <sup>c</sup>
Utah	1.30 <sup>b</sup>	0.16	(50)	-45.74 <sup>c</sup>
Vermont	1.14 <sup>b</sup>	0.25	(51)	-52.17 <sup>c</sup>

State	Rate	SE	Rank	PD	State	Rate	SE	Rank	PD
Alabama	3.04 <sup>b</sup>	0.15	(04)	27.32 <sup>c</sup>	Montana	1.94	0.28	(36)	-18.64 <sup>c</sup>
Alaska	1.99	0.39	(34)	-16.66 <sup>c</sup>	Nebraska	1.59 <sup>b</sup>	0.18	(45)	-33.64 <sup>c</sup>
Arizona	1.90 <sup>b</sup>	0.11	(41)	-20.44 <sup>c</sup>	Nevada	2.69	0.21	(12)	12.61
Arkansas	3.32 <sup>b</sup>	0.21	(03)	39.10 <sup>c</sup>	New Hampshire	2.09	0.24	(32)	-12.71
California	2.35	0.05	(23)	-1.68	New Jersey	2.44	0.10	(20)	2.12
Colorado	1.74 <sup>b</sup>	0.12	(42)	-27.26 <sup>c</sup>	New Mexico	2.65	0.23	(15)	10.97
Connecticut	1.64 <sup>b</sup>	0.13	(44)	-31.34 <sup>c</sup>	New York	2.38	0.07	(22)	-0.34
Delaware	2.18	0.30	(27)	-8.67	North Carolina	2.35	0.10	(24)	-1.88
D.C.	2.94	0.43	(05)	23.07 <sup>c</sup>	North Dakota	1.54	0.30	(46)	-35.65 <sup>c</sup>
Florida	2.68 <sup>b</sup>	0.07	(13)	12.17	Ohio	2.59	0.09	(17)	8.37
Georgia	2.68	0.11	(14)	12.16	Oklahoma	2.91	0.18	(07)	21.63 <sup>c</sup>
Hawaii	1.93	0.24	(37)	-19.29 <sup>c</sup>	Oregon	1.92	0.14	(38)	-19.78 <sup>c</sup>
Idaho	2.14	0.24	(30)	-10.46	Pennsylvania	2.25	0.08	(26)	-5.72
Illinois	2.63	0.09	(16)	9.83	Rhode Island	1.45 <sup>b</sup>	0.21	(48)	-39.20 <sup>c</sup>
Indiana	2.38	0.12	(21)	-0.31	South Carolina	2.85	0.15	(10)	19.03 <sup>c</sup>
Iowa	2.11	0.16	(31)	-11.87	South Dakota	1.91	0.30	(39)	-20.18 <sup>c</sup>
Kansas	2.18	0.18	(28)	-8.81	Tennessee	2.79	0.13	(11)	16.79 <sup>c</sup>
Kentucky	2.91	0.16	(06)	21.92 <sup>c</sup>	Texas	2.91 <sup>b</sup>	0.07	(08)	21.59 <sup>c</sup>
Louisiana	3.35 <sup>b</sup>	0.17	(02)	40.17 <sup>c</sup>	Utah	1.30 <sup>b</sup>	0.16	(50)	-45.74 <sup>c</sup>
Maine	1.90	0.22	(40)	-20.34 <sup>c</sup>	Vermont	1.14 <sup>b</sup>	0.25	(51)	-52.17 <sup>c</sup>
Maryland	2.28	0.12	(25)	-4.77	Virginia	2.18	0.10	(29)	-8.89
Massachusetts	1.39 <sup>b</sup>	0.09	(49)	-41.90 <sup>c</sup>	Washington	1.96 <sup>b</sup>	0.11	(35)	-18.16 <sup>c</sup>
Michigan	2.00 <sup>b</sup>	0.09	(33)	-16.17 <sup>c</sup>	West Virginia	2.90	0.24	(09)	21.51 <sup>c</sup>
Minnesota	1.49 <sup>b</sup>	0.10	(47)	-37.51 <sup>c</sup>	Wisconsin	1.70 <sup>b</sup>	0.11	(43)	-28.98 <sup>c</sup>
Mississippi	3.88 <sup>b</sup>	0.22	(01)	62.23 <sup>c</sup>	Wyoming	2.53	0.45	(19)	6.01
Missouri	2.57	0.13	(18)	7.71					



<sup>a</sup> US Mortality Files, National Center for Health Statistics, Centers for Disease Control and Prevention. Rates are per 100,000 and are age-adjusted to the 2000 US Std Population (19 age groups - Census P25-1130).  
<sup>b</sup> Difference between state rate and total U.S. rate is statistically significant ( $p \leq .0002$ ).  
<sup>c</sup> Absolute percent difference between state rate and total U.S. rate is 15% or more.  
SE Standard error of the rate.  
PD Percent difference between state rate and total U.S. rate.  
- Statistic not shown. Rate based on less than 16 cases for the time interval.

Table 5.15  
Cancer of the Cervix Uteri (Invasive)

Estimated United States Cancer Prevalence Counts<sup>a</sup> on January 1, 2009  
By Race/Ethnicity and Years Since Diagnosis

Years Since Diagnosis	0 to <5	5 to <10	10 to <15	15 to <20	20 to <25	25 to <30	0 to <19 <sup>e</sup>	0 to <34 <sup>e</sup>	>=34 <sup>g</sup>	Complete <sup>h</sup>
<u>Race</u>										
All Races <sup>b</sup>	37,983	35,018	36,166	32,413	25,994	20,081	135,337	202,962	44,749	247,711
White <sup>b</sup>	29,788	28,023	29,009	27,086	21,874	16,439	108,627	164,735	37,738	202,473
Black <sup>b</sup>	5,475	4,723	4,389	3,495	2,827	2,717	17,446	25,791	+	+
Asian/Pacific Islander <sup>c</sup>	1,997	1,688	1,758	+	+	+	6,454	+	+	+
Hispanic <sup>d</sup>	8,040	7,423	6,068	+	+	+	25,845	+	+	+

Estimated prevalence percent<sup>a</sup> on January 1, 2009, of the SEER 11 population diagnosed in the previous 19 years  
By Age at Prevalence and Race/Ethnicity

Age at Prevalence	Age Specific (Crude)										Age-Adjusted <sup>f</sup> All Ages	
	All Ages	0-9	10-19	20-29	30-39	40-49	50-59	60-69	70-79	80+		
<u>Race</u>												
All Races <sup>c</sup>	0.0778%	-	0.0002%	0.0088%	0.0794%	0.1569%	0.1623%	0.1393%	0.1241%	0.0734%	0.0755%	
White <sup>c</sup>	0.0791%	-	-	0.0098%	0.0898%	0.1684%	0.1601%	0.1292%	0.1128%	0.0585%	0.0769%	
Black <sup>c</sup>	0.0679%	-	-	0.0088%	0.0599%	0.1261%	0.1624%	0.1506%	0.1418%	0.1364%	0.0718%	
Asian/Pacific Islander <sup>c</sup>	0.0743%	-	-	0.0022%	0.0377%	0.1088%	0.1670%	0.1839%	0.1752%	0.1399%	0.0697%	
Hispanic <sup>d</sup>	0.0956%	-	-	0.0098%	0.0894%	0.2266%	0.2911%	0.2977%	0.2722%	0.1891%	0.1266%	

<sup>a</sup> US 2009 cancer prevalence counts are based on 2009 cancer prevalence proportions from the SEER registries and 1/1/2009 US population estimates based on the average of 2008 and 2009 population estimates from the US Bureau of the Census. Prevalence was calculated using the First Malignant Primary Only for a person.

<sup>b c d</sup> Statistics based on (b) SEER 9 Areas (c) SEER 11 Areas and Rural Georgia (d) NHIA for Hispanic for SEER 11 Areas and Rural Georgia.

<sup>e</sup> Maximum limited-duration prevalence: 34 years for 1975-2009 SEER 9 data; 19 years for 1990-2009 SEER 11 data (used to calculate prevalence for Hispanics and Asian Pacific Islanders).

<sup>f</sup> Percentages are age-adjusted to the 2000 US Standard Population (19 age groups - Census P25-1130) by 5-year age groups.

<sup>g h i</sup> (g) Cases diagnosed more than 34 years ago were estimated using the completeness index method (Capocaccia et. al. 1997, Merrill et. al. 2000). (h) Complete prevalence is obtained by summing 0 to <34 and >=34. (i) Age-specific completeness index was approximated using empirical data from historical Connecticut tumor registry.

- Statistic not shown. Statistic based on fewer than 5 cases estimated alive in SEER for the time interval.

+ Not available.

Table 5.16

## Cancer of the Cervix Uteri (Invasive)

Percent Distribution and Counts by Histology among Histologically Confirmed Cases, 2005-2009  
Females by Race

Histology <sup>a</sup>	All Races		White		Black		Asian/Pacific Islander		American Indian/ Alaska Native <sup>b</sup>		Hispanic <sup>c</sup>	
	Count	Percent	Count	Percent	Count	Percent	Count	Percent	Count	Percent	Count	Percent
Carcinoma	16,646	98.2%	12,566	98.2%	2,288	98.0%	1,427	98.7%	110	97.3%	3,787	98.3%
Epidermoid carcinoma <sup>d</sup> (8050-8131)	11,382	67.1%	8,379	65.5%	1,809	77.5%	945	65.4%	83	73.5%	2,655	68.9%
Squamous cell carcinoma (8070)	7,646	45.1%	5,558	43.4%	1,324	56.7%	606	41.9%	55	48.7%	1,594	41.4%
Squamous cell, keratinizing (8071)	1,249	7.4%	933	7.3%	193	8.3%	103	7.1%	-	-	348	9.0%
Squamous cell, non-keratinizing (8072)	1,520	9.0%	1,162	9.1%	185	7.9%	140	9.7%	-	-	450	11.7%
Squamous cell, Microinvasive (8076)	715	4.2%	548	4.3%	66	2.8%	69	4.8%	-	-	205	5.3%
Other (8050-8069, 8073-8075,8077-8131)	252	1.5%	178	1.4%	41	1.8%	27	1.9%	-	-	58	1.5%
Adenocarcinoma <sup>e</sup>	4,508	26.6%	3,655	28.6%	339	14.5%	424	29.3%	19	16.8%	969	25.2%
Adenocarcinoma, NOS (8140)	2,358	13.9%	1,921	15.0%	170	7.3%	215	14.9%	-	-	512	13.3%
Adenosquamous (8560,8570)	704	4.2%	552	4.3%	71	3.0%	71	4.9%	-	-	177	4.6%
Other adenocarcinomas <sup>f</sup>	1,446	8.5%	1,182	9.2%	98	4.2%	138	9.5%	-	-	280	7.3%
Other specific carcinomas <sup>g</sup>	248	1.5%	182	1.4%	35	1.5%	26	1.8%	-	-	54	1.4%
Unspecified, Carcinoma, NOS (8010-8011,8020-8022)	508	3.0%	350	2.7%	105	4.5%	32	2.2%	-	-	109	2.8%
Sarcoma <sup>h</sup>	81	0.5%	63	0.5%	-	-	-	-	-	-	22	0.6%
Other specific types (8720-8790,8930-8936, 8950-9030,9060-9110, 9260-9365,9380-9539)	150	0.9%	109	0.9%	25	1.1%	-	-	-	-	25	0.6%
Unspecified (8000-8005)	75	0.4%	59	0.5%	-	-	-	-	-	-	18	0.5%
Total	16,952	100.0%	12,797	100.0%	2,335	100.0%	1,446	100.0%	113	100.0%	3,852	100.0%

Source: SEER 18 areas (San Francisco, Connecticut, Detroit, Hawaii, Iowa, New Mexico, Seattle, Utah, Atlanta, San Jose-Monterey, Los Angeles, Alaska Native Registry, Rural Georgia, California excluding SF/SJM/LA, Kentucky, Louisiana, New Jersey and Georgia excluding ATL/RG).

Percents may not sum to 100 due to rounding.

<sup>a</sup> Excludes Kaposi Sarcoma, mesothelioma, lymphomas, leukemias, myelomas, lymphoreticular, and immunoproliferative diseases.

<sup>b</sup> Estimates for American Indian/Alaska Native are based on the CHSDA (Contract Health Service Delivery Area) counties.

<sup>c</sup> Hispanic is not mutually exclusive from whites, blacks, Asian/Pacific Islanders, and American Indians/Alaska Natives.

Underlying incidence data for Hispanics are based on NHIA and exclude cases from the Alaska Native Registry.

<sup>d</sup> Epidermoid carcinoma includes squamous, basal, and transitional cell carcinomas.

<sup>e</sup> Adenocarcinoma includes histologies 8140-8147,8160-8162,8180-8221,8250-8507,8514,8520-8551,8560,8570-8574,8576,8940-8941.

<sup>f</sup> Other adenocarcinomas include histologies 8141-8147,8160-8162,8180-8221,8250-8507,8514,8520-8551,8571-8574,8576,8940-8941.

<sup>g</sup> Other specific carcinomas include histologies 8012-8015,8030-8046,8150-8155,8170-8175,8230-8249,8508,8510-8513,8561-8562,8575,8580-8671.

<sup>h</sup> Sarcoma includes histologies 8680-8713,8800-8921,9040-9044,9120-9136,9150-9252,9370-9373,9540-9582.

- Statistic not shown due to fewer than 16 cases during the time period.



# SEER Observed Incidence, SEER Delay Adjusted Incidence and US Death Rates<sup>a</sup> Cancer of the Cervix Uteri, by Race

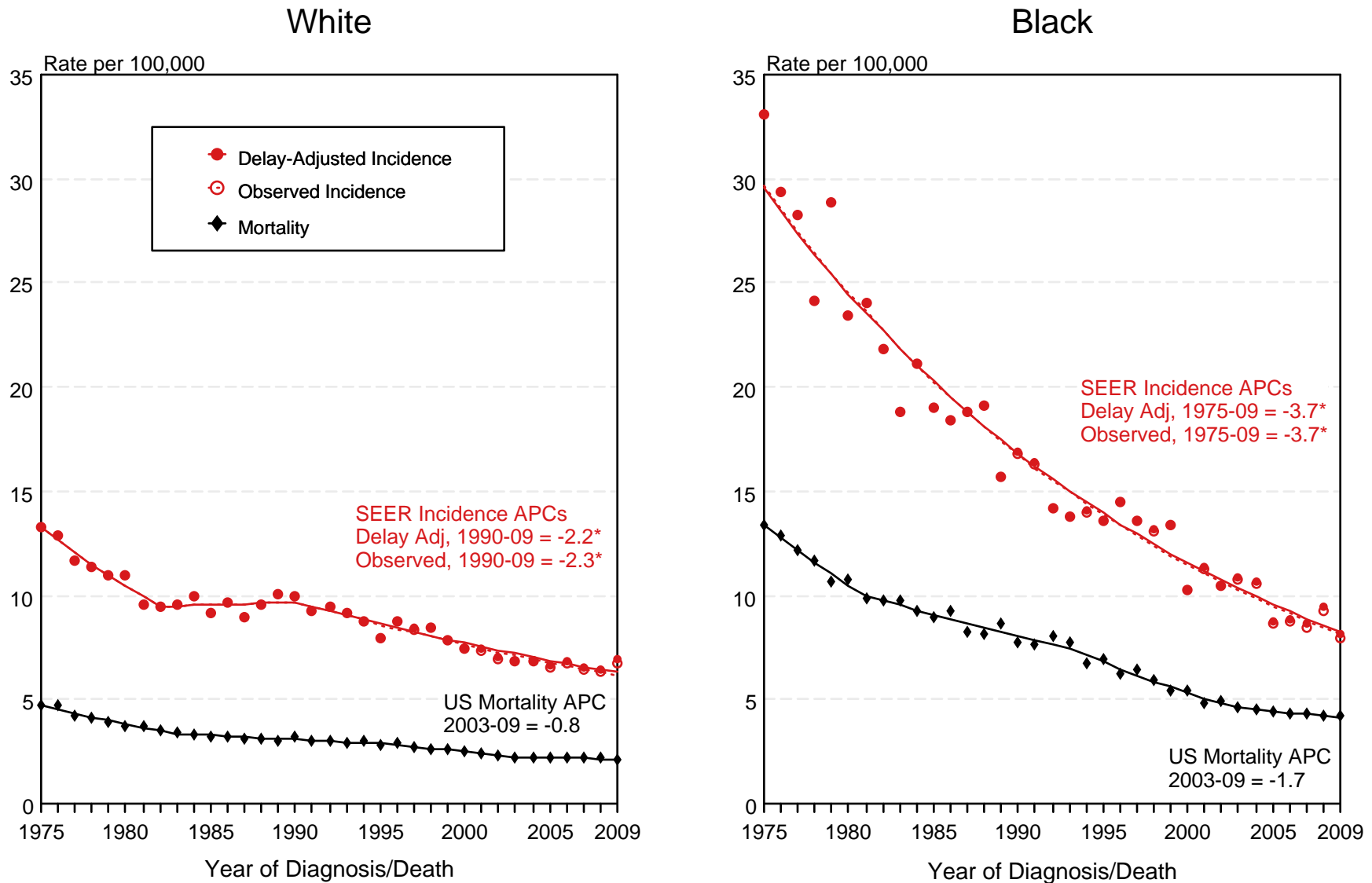


Figure 5.1

<sup>a</sup> Source: SEER 9 areas and US Mortality Files (National Center for Health Statistics, CDC). Rates are age-adjusted to the 2000 US Std Population (19 age groups - Census P25-1103). Regression lines and APCs are calculated using the Joinpoint Regression Program Version 3.5, April 2011, National Cancer Institute. The APC is the Annual Percent Change for the regression line segments. The APC shown on the graph is for the most recent trend.

\* The APC is significantly different from zero ( $p < 0.05$ ).

# SEER Observed Incidence, SEER Delay Adjusted Incidence and US Death Rates<sup>a</sup> Cancer of the Cervix Uteri, by Age and Race

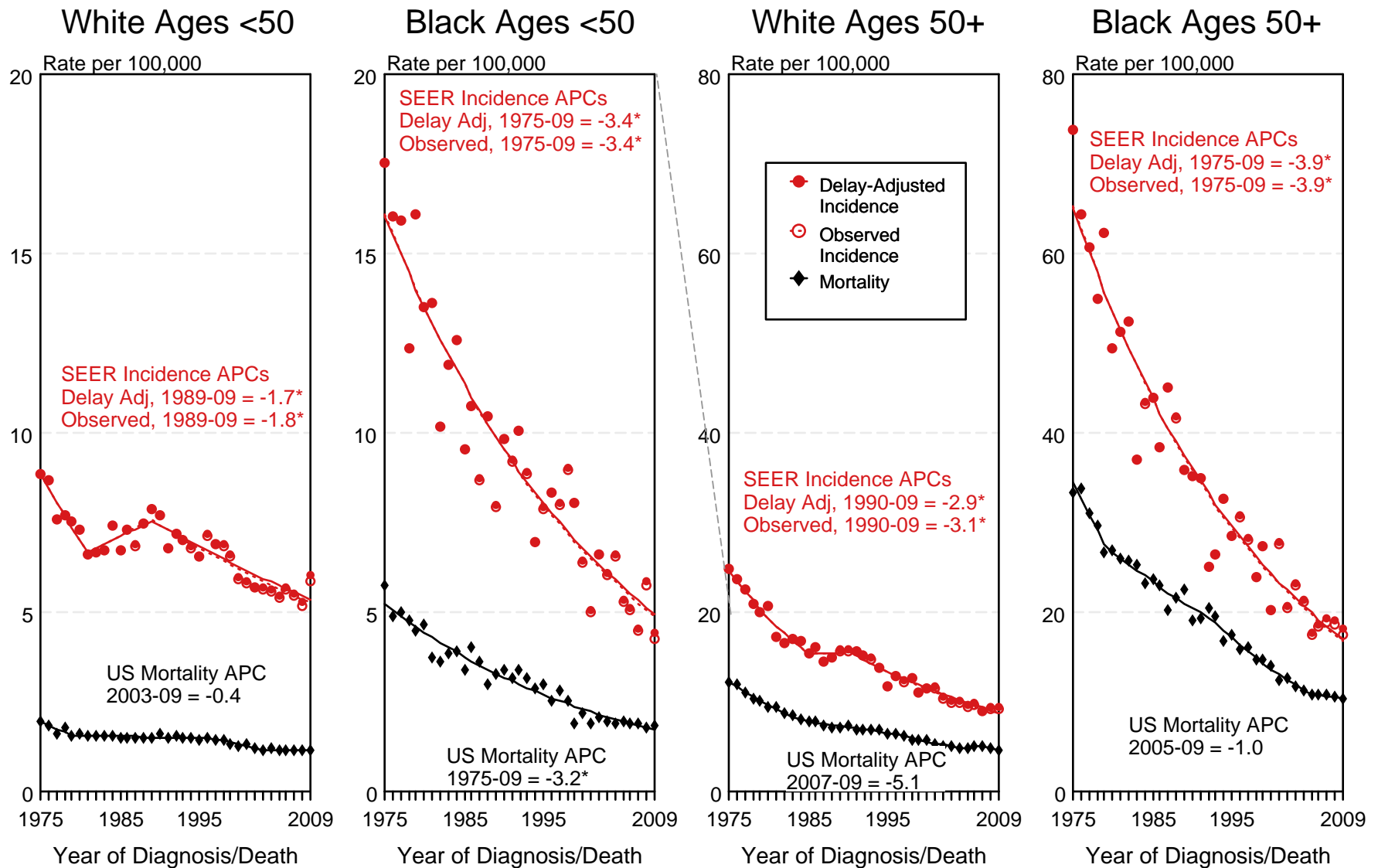


Figure 5.2

<sup>a</sup> Source: SEER 9 areas and US Mortality Files (National Center for Health Statistics, CDC). Rates are age-adjusted to the 2000 US Std Population (19 age groups - Census P25-1103). Regression lines and APCs are calculated using the Joinpoint Regression Program Version 3.5, April 2011, National Cancer Institute. The APC is the Annual Percent Change for the regression line segments. The APC shown on the graph is for the most recent trend.

\* The APC is significantly different from zero ( $p < 0.05$ ).

# SEER Incidence and US Death Rates<sup>a</sup> Cancer of the Cervix Uteri

Joinpoint Analyses for Whites and Blacks from 1975-2009  
and for Asian/Pacific Islanders, American Indians/Alaska Natives and Hispanics from 1992-2009

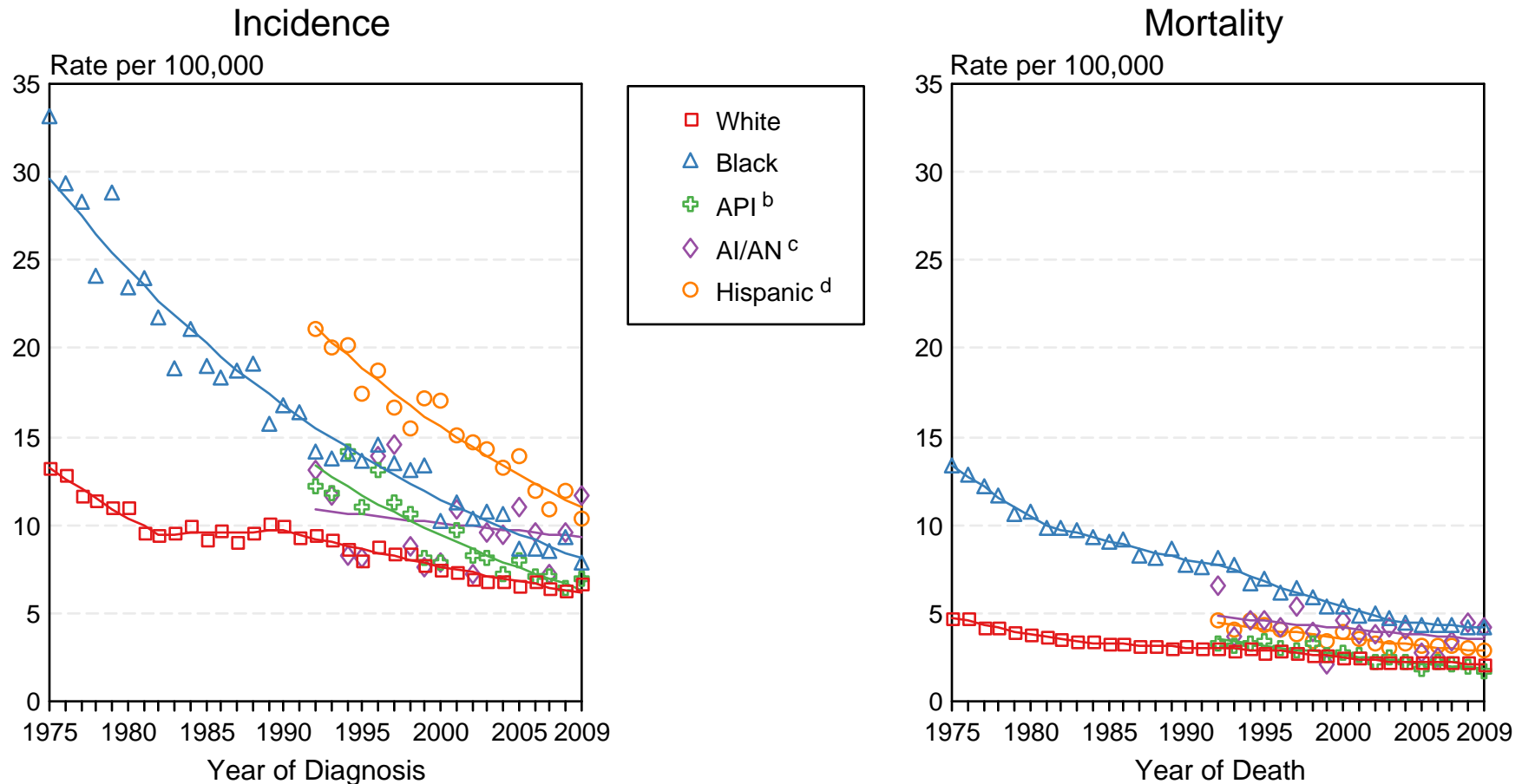


Figure 5.3

Source: Incidence data for whites and blacks are from the SEER 9 areas (San Francisco, Connecticut, Detroit, Hawaii, Iowa, New Mexico, Seattle, Utah, Atlanta). Incidence data for Asian/Pacific Islanders, American Indians/Alaska Natives and Hispanics are from the SEER 13 Areas (SEER 9 Areas, San Jose-Monterey, Los Angeles, Alaska Native Registry and Rural Georgia). Mortality data are from US Mortality Files, National Center for Health Statistics, CDC.

<sup>a</sup> Rates are age-adjusted to the 2000 US Std Population (19 age groups - Census P25-1103).

Regression lines are calculated using the Joinpoint Regression Program Version 3.5, April 2011, National Cancer Institute. Joinpoint analyses for Whites and Blacks during the 1975-2009 period allow a maximum of 5 joinpoints. Analyses for other ethnic groups during the period 1992-2009 allow a maximum of 3 joinpoints.

<sup>b</sup> API = Asian/Pacific Islander.

<sup>c</sup> AI/AN = American Indian/Alaska Native. Rates for American Indian/Alaska Native are based on the CHSDA (Contract Health Service Delivery Area) counties.

<sup>d</sup> Hispanic is not mutually exclusive from whites, blacks, Asian/Pacific Islanders, and American Indians/Alaska Natives. Incidence data for Hispanics are based on NHIA and exclude cases from the Alaska Native Registry. Mortality data for Hispanics exclude cases from Connecticut, the District of Columbia, Maine, Maryland, Minnesota, New Hampshire, New York, North Dakota, South Carolina, Oklahoma, and Vermont.

# SEER Observed Incidence and SEER Delay Adjusted Incidence Rates<sup>a</sup> SEER 9 Areas Compared to SEER 13 Areas Cancer of the Cervix Uteri, by Race

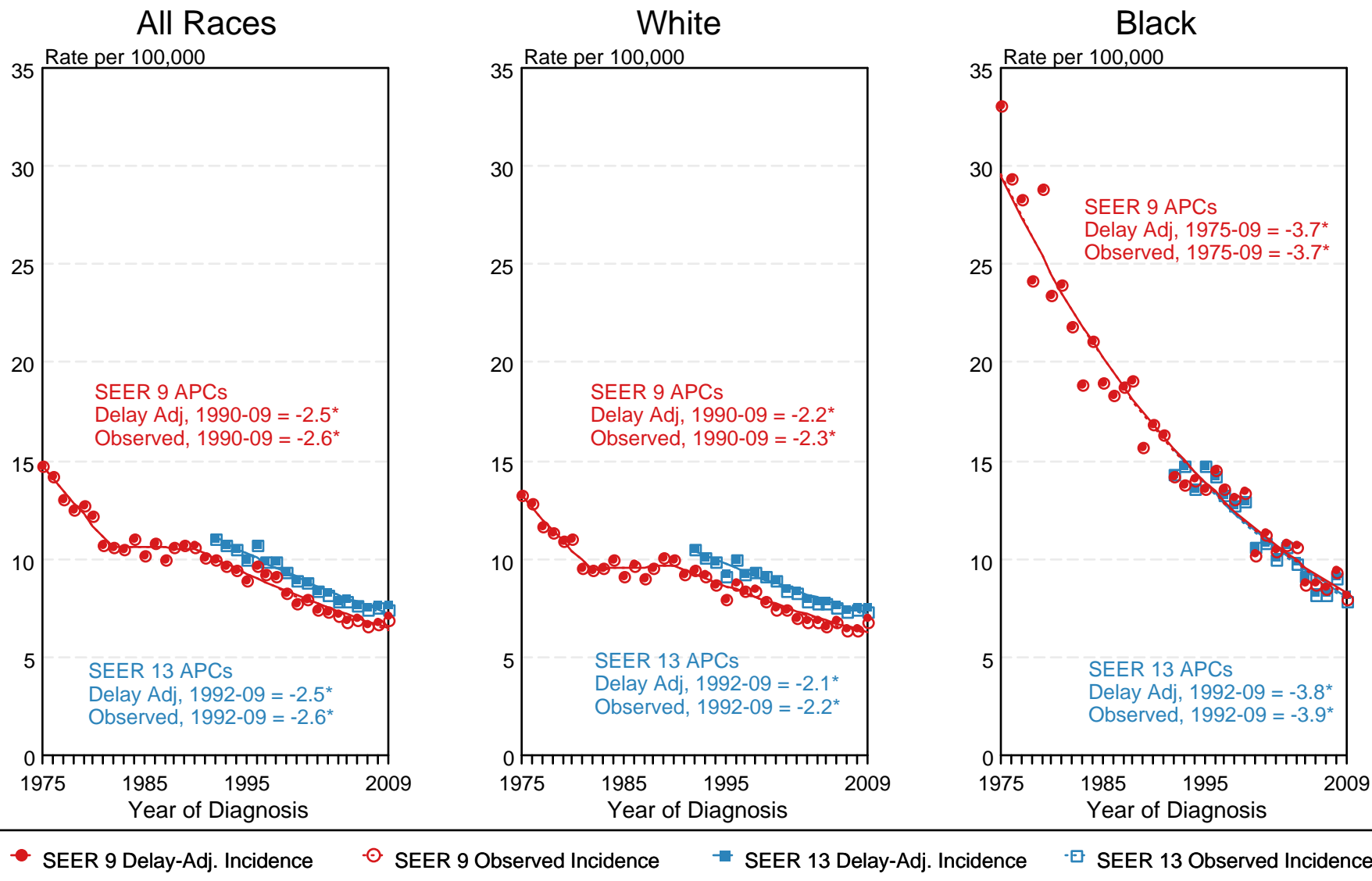
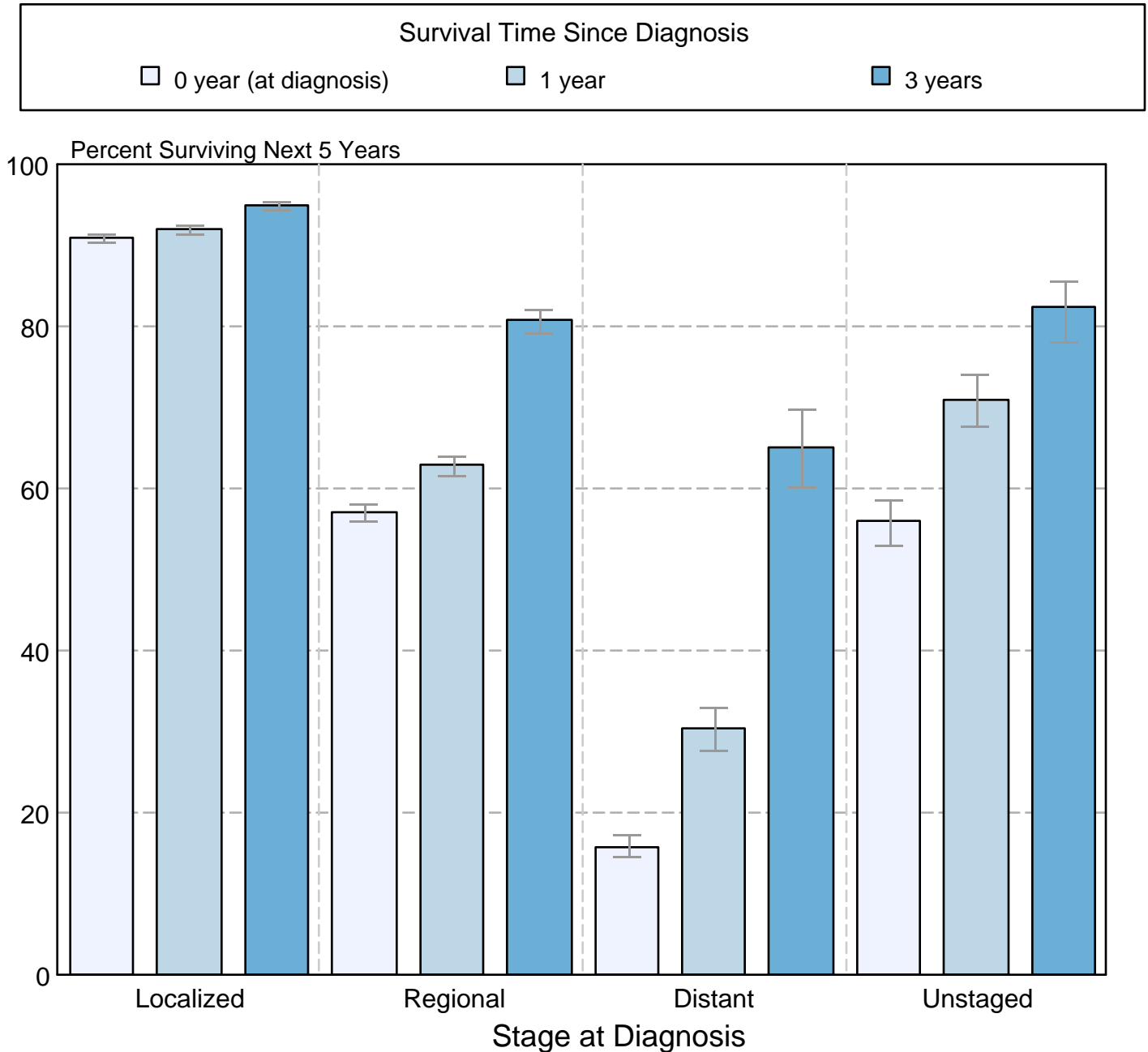


Figure 5.4

<sup>a</sup> Source: SEER 9 areas and SEER 13 areas.  
Rates are age-adjusted to the 2000 US Std Population (19 age groups - Census P25-1103).  
Regression lines and APCs are calculated using the Joinpoint Regression Program Version 3.5, April 2011, National Cancer Institute.  
The APC is the Annual Percent Change for the regression line segments. The APC shown on the graph is for the most recent trend.  
\* The APC is significantly different from zero ( $p < 0.05$ ).

Figure 5.5

**Cancer of the Cervix Uteri**  
**5-Year SEER Conditional Relative Survival and**  
**95% Confidence Intervals**  
 Probability of surviving the next 5 years given the cohort  
 has already survived 0, 1, or 3 years  
 1998-2008 by stage at diagnosis



Source: SEER 18 areas (San Francisco, Connecticut, Detroit, Hawaii, Iowa, New Mexico, Seattle, Utah, Atlanta, San Jose-Monterey, Los Angeles, Alaska Native Registry, Rural Georgia, California excluding SF/SJM/LA, Kentucky, Louisiana, New Jersey and Georgia excluding ATL/RG). California excluding SF/SJM/LA, Kentucky, Louisiana, New Jersey and Georgia excluding ATL/RG contribute cases for diagnosis years 2000-2008. The remaining 13 SEER Areas contribute cases for the entire period 1998-2008.

Stage at diagnosis is classified using SEER Summary Stage 2000.

Percent surviving is not shown if based on less than 25 cases.

Confidence intervals are not shown if length of the confidence interval is greater than 5 times the standard error.